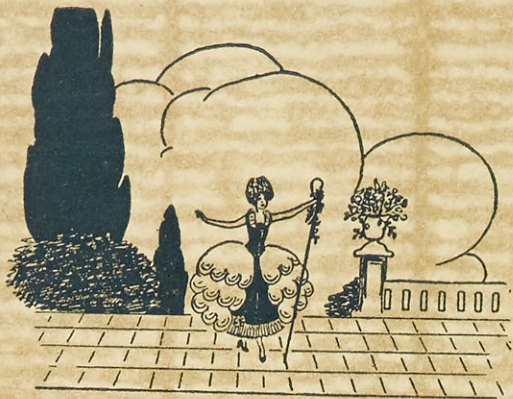


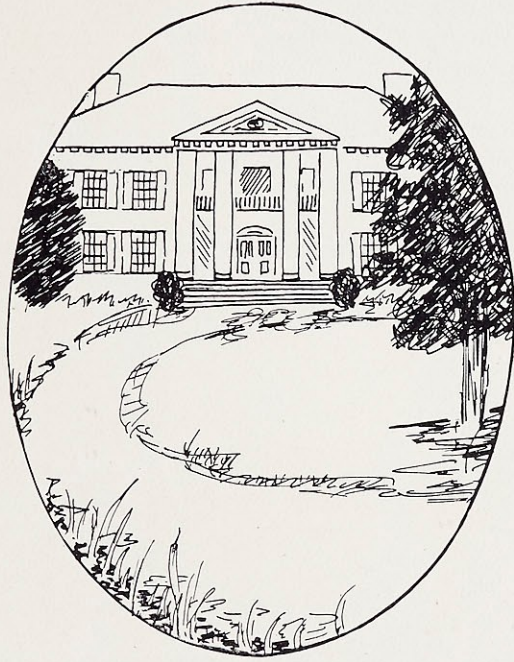
Lauretana



1928



Ex Libris



The Lauretanum

1 9 2 8

COPYRIGHT

Helen McGuire

EDITOR

Anna Marie McDermott

BUSINESS MANAGER

*The
Lauretanum*

*Webster College
Webster Groves
Missouri*

1928



The Staff

Helen McGuire-Editor-in Chief
Rosamond Smith Associate Editor
Elizabeth Corrigan Art Editor
Anna McDermott-Business Manager
Juanita Abell Assistant Business Mgr.
Marquerite Barthel Advertising Manager
Pearl Broderick-Assistant Advertising Mgr.
Marta Brown Treasurer



*The
Dedication*

*To Mother Mary Linus
President of Webster College*

this

the nineteen twenty eight

Lauretanum

is affectionately dedicated



The Foreword

If this, the fifth volume of the Lauretanum, be a worthy example of Webster's progress and a reflector of her ideals, if it be a true picture of a great and happy year in which Webster has achieved a cherished hope, then, it has attained its goal.



The Contents

College

Classes

Activities

Humor

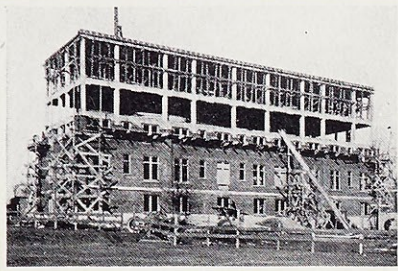




In Memoriam

Sister Mary Louise

DEAN



*It stands—the Webster of our
delight,
A gem for the eye that sees,
The masterpiece fashioned by
labor and prayer,
The dream of a Sister Louise.*



*Far more than outward beauty do we
see,
In breathless sweep of tower, and noble
tree,*



*But read in every line of your chaste
grandeur,
Your love, and courage, and your
soul's high splendor.*



*Oh, shaded paths, cut through the
shining sod,
Where wondering, light-footed youth
has trod,*



*Oh, curved walk, and loam thick
starred with flowers,
You are hallowed by memories of
happy hours.*



*How happy we, that we with you
may strive,
In preparation for the higher life,*



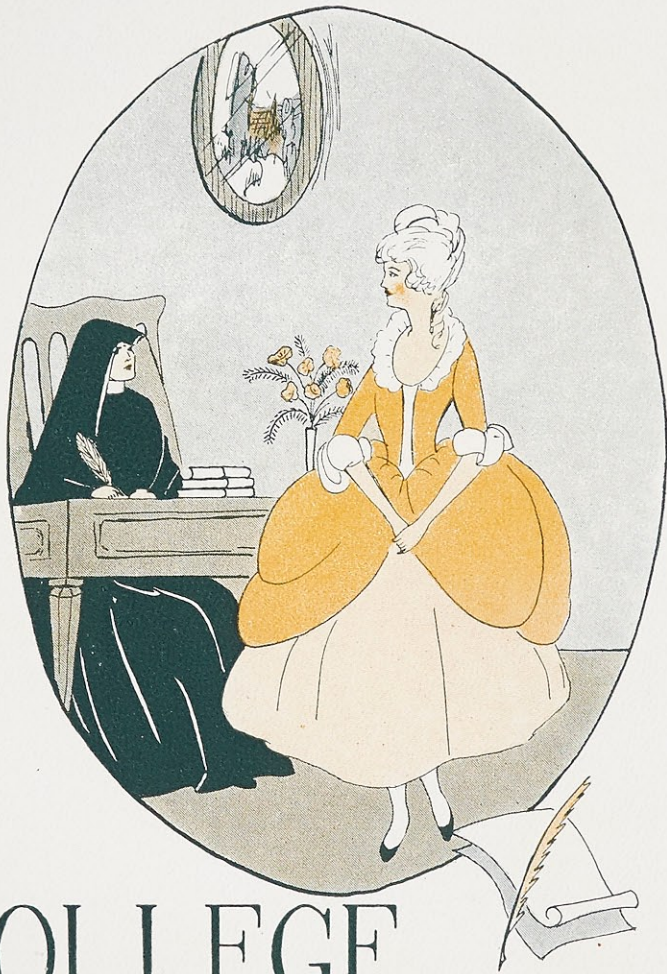
*That over all our work there shines
the cross—
This is the greatest gift you have for
us.*

C. Brown.

The
LAURETANUM



Entrance to Administration Building



COLLEGE

College

OFFICERS OF ADMINISTRATION

MOTHER MARY LINUS, A. M., President
SISTER M. BORGIA, A. M., Dean
SISTER M. EDWARDA, A. M., Dean of Women
SISTER LILLIAN CLARE, Registrar
SISTER ANN MARITA, Litt. B., Treasurer

FACULTY

SISTER MARY BORGIA, A. M.
Professor of Mathematics and Director of the Department (1916)

SISTER MIRIAM, A. M., Ph. D.
Professor of Classical Language and Director of the Department (1916)

SISTER ALOYSIA MARIE, A. M.
Professor of English and Director of the Department (1927)

SISTER MARY EDWARDA, A. M.
Professor of Chemistry and Director of the Department (1925)

SISTER MARY NERINCKX, A. M.
Assistant Professor of English (1924)

SISTER MARY ALOYSE, A. M.
Professor of Biology and Director of the Department (1925)

SISTER FRANCIS MARIE, A. M.
Professor of Education and Director of the Department (1926)

SISTER MARY FELICITAS, A. B.
Instructor in Spanish (1927)

SISTER ANN MARITA, Litt. B.
Instructor in Economics (1927)

SISTER MARIE ANTHONY
Instructor in Domestic Science (1920)

SISTER DOROTHY MARIE
Instructor in Commercial Art (1924)

SISTER LUCY MARIE
Instructor in Domestic Art (1927)

SISTER MARY ADELINE, Mus. B.
Professor of Theory of Music and Director of the Conservatory (1926)

SISTER MARIE LORETTO, Mus. B.
Instructor in Voice Culture (1919)

SISTER MARY ALBERT, Mus. B.
Instructor in Piano (1923)

SISTER MARY CECILIA
Instructor in Violin (1927)

Faculty

REVEREND F. V. CORCORAN, C. M., PH. D., S. T. D.
Professor of Philosophy and Director of the Department (1917)

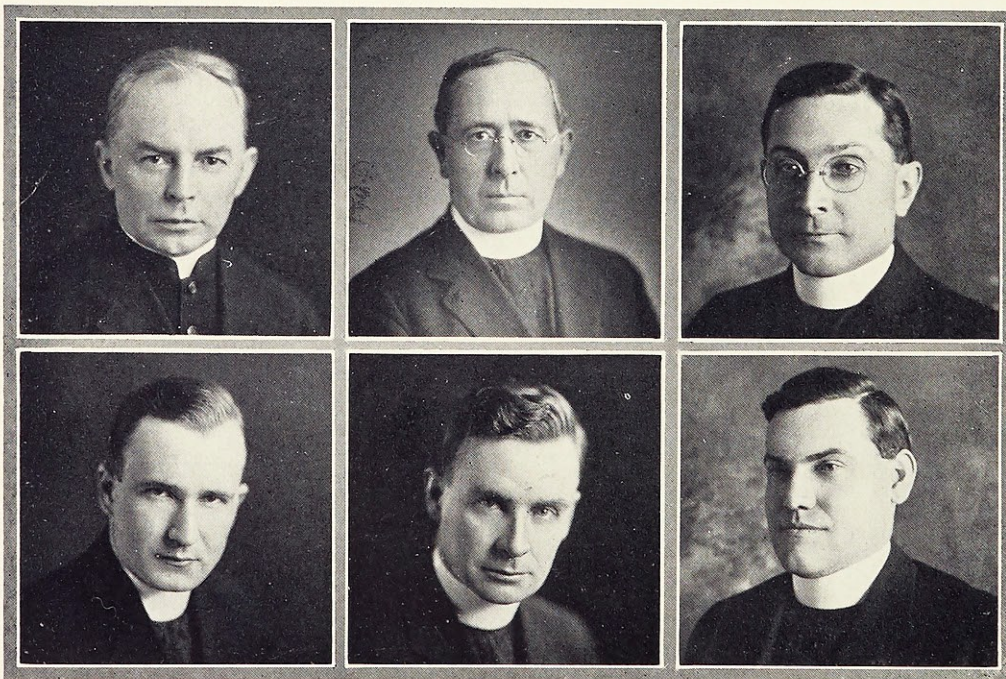
REVEREND JOSEPH P. DONOVAN, C. M., J. C. D.
Professor of Sociology (1917)

REVEREND JOHN W. CONROY, C. M., S. T. D.
Professor of History and Director of the Department (1919)

REVEREND L. P. FOLEY, C. M., S. T. D.
Professor of Philosophy (1927)

REVEREND JAMES P. O'MALLEY, C. M., A. M.
Professor of Religion and Director of the Department (1924)

REVEREND T. V. CAHILL, C. M., S. T. D.
Professor of Scripture (1926)



Rev. F. V. Corcoran, C. M.
Rev. T. V. Cahill, C. M.

Rev. J. P. Donovan, C. M.
Rev. J. P. O'Malley, C. M.

Rev. J. W. Conroy, C. M.
Rev. L. P. Foley, C. M.

Faculty

MRS. ANNA MCCLAIN SANKEY.

Instructor in Expression and Director of the Department (1916)

Mlle. MARCELLE PREVOST, A. B.

Instructor in French (1924) and Director of the Department of Modern Languages (1927)

MR. LOUIS E. JAMES, A. M.

Instructor in Physics (1926)

MR. R. H. BALDWIN, A. M.

Instructor in History and Political Science (1926)

MISS ANITA R. MUELLER, A. M.

Instructor in Journalism (1927)

MISS MARY ELIZABETH NEWELL, A. B.

Instructor in Mathematics (1927)

MISS GENEVIEVE BARTHEL, A. B.

Instructor in Physical Education (1926)

MISS ADA GANNON, A. B.

Instructor in Parliamentary Law (1923)



Marcelle Prevost
Louis James

Anita Mueller
Mary Elizabeth Newell

Genevieve Barthel

Anna McClain Sankey
R. H. Baldwin

The
AURETANUM



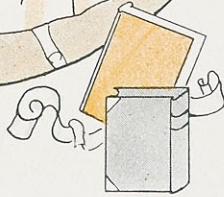
A View of Administration Building

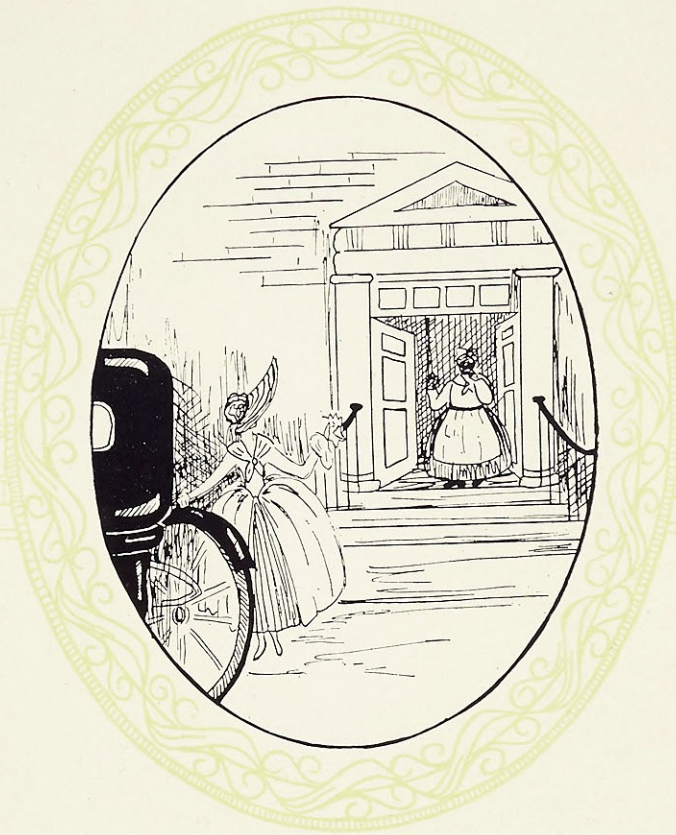
19

20



CLASSES





Seniors

The
AURETANUM



JUANITA ABELL, B. S.
Wichita, Kansas

Class President '28
Choral Club President '28
Dramatics '25, '26, '27, '28
Sodality '25, '26, '27, '28
May Queen '27
C. S. M. C. '25, '26, '27, '28
W. A. A. '25, '26, '27, '28
Cheer Leader '25, '26

The
LAURETANUM



LAURA RUSSELL ARCHER,
A. B.

El Dorado, Mississippi

Editor-in-Chief Loretine '28
Vice-President Choral Club '28
Secretary Poetry Club '28
Sodality '25, '26, '27, '28
C. S. M. C. '25, '26, '27, '28
W. A. A. '25, '26, '27, '28
Literary Club '28

The
LAURETANUM



CATHERINE ARRENDALE,
Litt. B.

Poplar Bluff, Missouri

Virginia College '25
University of Missouri '26
Poetry Club '28
Biology Club '28
W. A. A. '27, '28

The
LAURETANUM



MARGUERITE BARTHEL, A. B.

St. Louis, Missouri

Class Secretary '28
Advertising Manager Lauretanum '28
Student Council '28
Sodality '25, '26, '27, '28
Dramatics '25, '26, '27, '28
C. S. M. C. '25, '26, '27, '28
W. A. A. '25, '26, '27, '28

The
LAURETANUM



PEARL M. BRODERICK, A. B.
Sterling, Illinois

Student Council '28
Asst. Advertising Manager Lauretanium '28
Secretary of Class '27
Advertising Manager Loretine '27
Web Staff '26, '28
Student's Spiritual Council '26
C. S. M. C. '25, '26, '27, '28
W. A. A. '25, '26, '27, '28

The
LAURETANUM



MARTA BROWN, B. S.
Fort Madison Iowa

- President Student Council '28*
- President Math Club '28*
- Treasurer Lauretanium '28*
- Maid to May Queen '27*
- Treasurer W. A. A. '27*
- Circulating Manager Loretine '27*
- C. S. M. C. '25, '26, '27, '28*
- Student Spiritual Council '28*

The
AURETANUM



ANN CARR, A. B.

Webster Groves, Missouri

President C. S. M. C. '28
Vice-President C. S. M. C. '27
Treasurer C. S. M. C. '26
Student Spiritual Council '26, '27
Literary Club '28
Poetry Club '28
W. A. A. '25, '26, '27, '28

The
LAURETANUM



MARY COOK, A. B.
St. Louis, Missouri

- Sodality '25, '26, '27, '28
- W. A. A. '25, '26, '27, '28
- C. S. M. C. '25, '26, '27, '28
- Volley Ball '28

The
LAURETANUM



ELIZABETH CORRIGAN, A. B.

Poplar Bluff, Missouri

President Poetry Club '28

Student Spiritual Council '27, '28

Art Editor Lauretanium '28

Literary Club '28

C. S. M. C. '25, '26, '27, '28

Class Treasurer '25

Art Editor Loretine '27

W. A. A. '25, '26, '27, '28

The
LAURETANUM



THELMA COYNE, A. B.
East St. Louis, Illinois

- Vice-President Class '28*
- Student Council '28*
- Vice-President W. A. A. '27*
- Treasurer W. A. A. '28*
- Cheer Leader '26, '27, '28*
- Dramatics '25, '26, '27, '28*
- Sodality '25, '26, '27, '28*
- C. S. M. C. '25, '26, '27, '28*

The
LAURETANUM



ELLEN DUGGAN, A. B.

St. Louis, Missouri

Business Manager Web '28

Sodality '25, '26, '27, '28

W. A. A. '25, '26, '27, '28

C. S. M. C. '25, '26, '27, '28

19

20

The
LAURETANUM



PEARL M. FARRELL, A. B.

Ponca City, Oklahoma

Literary Club '28

Dramatics '25

Cheer Leader '25

W. A. A. '25, '26, '27, '28

Sodality '25, '26, '27, '28

C. S. M. C. '25, '26, '27, '28

The
AURETANUM



EDITH GLOSEMEYER, A. B.
O'Fallon, Missouri

Student Spiritual Council '28
Exchange Editor Loretine '28
General Chairman Carnival
Secretary Student Council '28
Dramatics '25, '26, '27, '28
W. A. A. '25, '26, '27, '28
C. S. M. C. '25, '26, '27, '28
Choral Club '25

19

20

The
LAURETANUM



HELEN MAY HEISSERER, A. B.

Benton, Missouri

- Literary Club '28
- Chemistry Club '28
- Secretary W. A. A. '25
- Dramatics '25
- C. S. M. C. '25, '26, '27, '28
- Sodality '25, '26, '27, '28

The
AURETANUM



CATHRYN HUMMERT, A. B.
Breese, Illinois

President Student Spiritual Council '28
Secretary C. S. M. C. '27
Poetry Club '28
Student Spiritual Council '27
President Choral Club '26
Secretary Class '25
W. A. A. '25, '26, '27, '28
Volley Ball '28

The
LAURETANUM



MAUD JOKERST, A. B.

St. Louis, Missouri

Basket Ball '25, '26, '27, '28

Track '26, '27

Sodality '25, '26, '27, '28

W. A. A. '25, '26, '27, '28

C. S. M. C. '25, '26, '27, '28

The
LAURETANUM



MARGARET LEONARD, B. S.

Webster Groves, Missouri

Basket Ball '25, '26, '27, '28

Track '25

W. A. A. '25, '26, '27, '28

C. S. M. C. '25, '26, '27, '28

Sodality '25, '26, '27, '28

The
LAURETANUM



HELEN McANULTY, Litt. B.

Webster Groves, Missouri

Associate Editor Loretine '28

Sodality '25, '26, '27, '28

W. A. A. '25, '26, '27, '28

C. S. M. C. '25, '26, '27, '28

19

28

The
LAURETANUM



ANNA MARIE McDERMOTT,
A. B.

St. Louis, Missouri

Business Manager Lauretanum '28

Treasurer Class '28

Vice-President Class '27

Literary Club '28

Dramatics '25, '26, '27, '28

Sodality '25, '26, '27, '28

C. S. M. C. '25, '26, '27, '28

W. A. A. '25, '26, '27, '28

The
LAURETANUM



HELEN MCGUIRE, A. B.

Deer Grove, Illinois

Editor-in-Chief Lauretanum '28

President Class '27

Associate Editor Loretine '27

Associate Editor Web '26

Treasurer Class '26

Student Spiritual Council '27, '28

W. A. A. '25, '26, '27, '28

C. S. M. C. '25, '26, '27, '28

The
AURETANUM



MARGARET MARY PARKER,
Litt. B.

St. Louis, Missouri

Sodality '25, '26, '27, '28

W. A. A. '25, '26, '27, '28

C. S. M. C. '25, '26, '27, '28

The
LAURETANUM



MARY POWERS, A. B.

St. Louis, Missouri

- Visitation Junior College '25, '26
- Sodality '27, '28
- Dramatics '27, '28
- Student Council '28
- Circulation Manager Loretine '28
- C. S. M. C. '27, '28
- W. A. A. '27, '28

The
LAURETANUM



ROSAMOND SMITH, A. B.

St. Louis, Missouri

Editor-in-Chief Web '26, '28
Associate Editor Lauretanium '28
Managing Editor Web '25
Publicity Director '27, '28
Basket Ball '25, '26
Sodality '25, '26, '27, '28
W. A. A. '25, '26, '27, '28
C. S. M. C. '25, '26, '27, '28

19

20

The
AURETANUM



JEANNETTE STIRITZ, Litt. B.
Alton, Illinois
News Editor Web '28
Circulation Manager Web '26
Associate Editor '25
Student Spiritual Council '28
President Literary Club '28
W. A. A. '25, '26, '27, '28
Choral Club '27, '28
Spiritual Treasurer C. S. M. C. '28

The
LAURETANUM



HELEN STUCKSTEDE, A. B.
St. Louis, Missouri
Dramatics '25, '26, '27, '28
Sodality '25, '26, '27, '28
W. A. A. '25, '26, '27, '28
C. S. M. C. '25, '26, '27, '28

The
LAURETANUM



MARGARET WEGMAN, Litt. B.

St. Louis, Missouri

Sodality '25, '26, '27, '28
W. A. A. '25, '26, '27, '28
C. S. M. C. '25, '26, '27, '28

The
LAURETANUM



LILLIAN WOLTERING, A. B.

St. Louis, Missouri

St. Mary's College, Prairie du Chien, Wis. '25

Editorial Editor Web '28

Student Spiritual Council '28

W. A. A. '26, '27, '28

C. S. M. C. '26, '27, '28

19

20



The
LAURETANUM

To the Sisters of Loretto
who are members of the
Class of 1928 this page is
lovingly dedicated.

19

20

The
LAURETANUM

*I pluck the rose; accept its thorn
Because these two are mates.
My rose a roll of parchment is;
My thorn, closed castle gates.*

—E. Corrigan.



Juniors

The
LAURETANUM

Junior Class



ROSE MALON
Webster Groves, Missouri

GERTRUDE JOLLEY
St. Louis, Missouri

CELESTE FEHLIG
St. Louis, Missouri

CATHERINE ROHAN
Webster Groves, Missouri

*Rose Malon
Celeste Fehlig*

*Gertrude Jolley
Catherine Rohan*

MARIE REYNOLDS
Webster Groves, Missouri

MARIE SCHEER
St. Louis, Missouri



Marie Reynolds

Marie Scheer

Junior Class

HELEN EAVES
St. Louis, Missouri

JOSEPHINE THOMPSON
St. Louis, Missouri

THELMA GESELL
St. Louis, Missouri

MARGARET MARY BREY
St. Louis, Missouri



Helen Eaves
Thelma Gesell

Josephine Thompson
Margaret Mary Brey



Marie Cregan

Marie Rice

MARIE CREGAN
St. Louis, Missouri

MARIE RICE
St. Louis, Missouri

Junior Class



Marion Lane
Rosemary O'Reilly

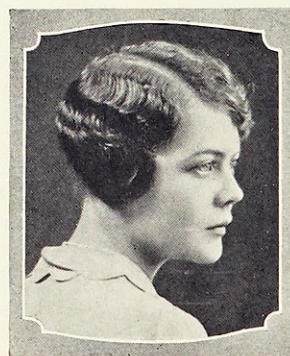
Margaret Roesch
Lillian Case

MARION LANE
Burlington, Kansas

MARGARET ROESCH
Webster Groves, Missouri

ROSEMARY O'REILLY
St. Louis, Missouri

LILLIAN CASE
St. Louis, Missouri



Blanche Marshall

BLANCHE MARSHALL
Maplewood, Missouri

Junior Class

JULIE BOURKE
Kansas City, Missouri

CATHERINE HAZEL
Owensboro, Kentucky

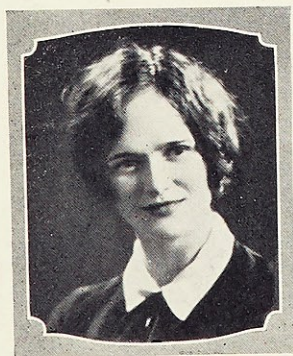
RUTH DOCKERY
St. Louis, Missouri

VIOLET SAUER
Winchester, Illinois



Julie Bourke
Ruth Dockery

Catherine Hazel
Violet Sauer



FRANK WARD
Birmingham, Alabama

Frank Ward

The
LAURETANUM

*Arched castle gates swing wide and dark
Before our dreaming, questing gaze.
Beyond, the rushing tide of Senior days
Flings back a silver question mark.
Behind, the quiet beauty of loved Junior ways
Dies in the shadow of castle gates gleaming thru' haze.*

—F. Ward.

19

20



Sophomores

Sophomore Class



CARMEN BROWN
Fort Madison, Iowa

KATHERINE HELEN CUMMINS
Webster Groves, Missouri

EILEEN FLEMMING
Kansas City, Missouri

MARY FRANCES BROEKER
St. Louis, Missouri

LUCILLE RAPILLARD
Little Rock, Arkansas

WINIFRED KANE
St. Louis, Missouri

*Carmen Brown
Eileen Fleming
Lucille Rapillard*

*Katherine Cummins
Mary Frances Broeker
Winifred Kane*

NELLIE MAE McDONALD
Peoria, Illinois

ELIZABETH PROBST
New Athens, Illinois



Nellie Mae McDonald

Elizabeth Probst

Sophomore Class

SUSIE MAE MOONEY
St. Louis, Missouri

ELIZABETH COAKLEY
St. Louis, Missouri

CATHERINE CODY
St. Louis, Missouri

FRANCES ERNST
St. Louis, Missouri

MARGARET REARDON
Chicago, Illinois

ORIENT WEIS
St. Louis, Missouri



Susie Mae Mooney
Catherine Cody
Margaret Reardon

Elizabeth Coakley
Frances Ernst
Orient Weis



Estella Cavanaugh

Neva Dailey

ESTELLA CAVANAUGH
Clare, Iowa

NEVA DAILEY
Kankakee, Illinois

Sophomore Class



STELLA THORNTON
St. Louis, Missouri

ERLINE STROTHKAMP
St. Louis, Missouri

EUGENIA BOCK
Pierron, Illinois

MARGARET VOLLET
St. Louis, Missouri

ANNE SCHILLY
St. Louis, Missouri

DORIS JONES
St. Louis, Missouri

*Stella Thornton
Eugenia Bock
Anne Schilly*

*Erline Strothkamp
Margaret Vollet
Doris Jones*



DORRIT BARNICLE
St. Louis, Missouri

Dorrit Barnicle

Sophomore Class

LAVINA SCHAEFER
Detroit, Michigan

ELEANOR FREDERIC
St. Louis, Missouri

JOSEPHINE RABBITT
St. Louis, Missouri

ELLEN QUIRK
St. Louis, Missouri

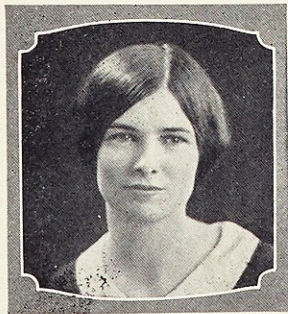
MATILDA WULLER
St. Louis, Missouri

HELEN WISE
St. Louis, Missouri



Lavina Schaefer
Josephine Rabbitt
Matilda Wuller

Eleanor Frederic
Ellen Quirk
Helen Wise



ELLEN HOGAN
Monett, Missouri

Ellen Hogan



The
LAURETANUM

*We promise thee our Loyalty
Oh, spirit that never dies;
Thou hast taught us to revere thee,
Because we realize
What honor, what nobility
Have shone before our eyes.*

—C. Brown.



Freshmen

The
LAURETANUM

Freshman Class



CATHERINE SULLIVAN
Birmingham, Alabama

BERNICE WOLFF
St. Louis, Missouri

ROSEMARY HYNES
St. Louis, Missouri

DOROTHY WALSH
Chicago, Illinois

IRENE FARRELL
Ponca City, Oklahoma

VIRGINIA COONEY
St. Louis, Missouri

HELEN MARGARET O'BRIEN
Little Rock, Arkansas

ANNE BOONE
Bardstown, Kentucky

HELEN SHERMAN
Louisville, Kentucky

*Catherine Sullivan
Dorothy Walsh
Helen M. O'Brien*

*Bernice Wolff
Irene Farrell
Anne Boone*

*Rosemary Hynes
Virginia Cooney
Helen Sherman*

MARGARET DELISLE
St. Louis, Missouri

DORIS CONDREN
St. Louis, Missouri

GLADYS MILLER
Edina, Missouri



Margaret DeLisle

Doris Condren

Gladys Miller

Freshman Class

ANNA MARIE HEINEN
Rayne, Louisiana

MARY ROSE BURKE
St. Louis, Missouri

CELESTE GRINDON
Webster Groves, Missouri

ALICE WIDMER
Webster Groves, Missouri

MARY FRANCES PERRY
St. Louis, Missouri

RUTH BERGFELD
St. Louis, Missouri

SUSANNA CORRIGAN
Poplar Bluff, Missouri

MARY DALY
Kirkwood, Missouri

KATHLEEN HAMEL
Yazoo City, Mississippi



Anna Marie Heinen Mary Rose Burke Celeste Grindon
Alice Widmer Mary Frances Perry Ruth Bergfeld
Susanna Corrigan Mary Daly Kathleen Hamel



Callista Kelly Elizabeth Dunne Marie Fritz

CALLISTA KELLY
St. Louis, Missouri

ELIZABETH DUNNE
Webster Groves, Missouri

MARIE FRITZ
St. Louis, Missouri

Freshman Class



Maurine Shelton Lucille Siefert Rose Phelan
Bernadette Sturgess Louise Ritter Helen M. O'Brien
Anne Ryan Mary Reilly Berneice Daily

MAURINE SHELTON
St. Louis, Missouri

LUCILLE SIEFERT
Webster Groves, Missouri

ROSE PHELAN
St. Louis, Missouri

BERNADETTE STURGESS
Vandalia, Illinois

LOUISE RITTER
Fort Madison, Iowa

HELEN MARIE O'BRIEN
St. Louis, Missouri

ANNE RYAN
St. Louis, Missouri

MARY REILLY
St. Louis, Missouri

BERNEICE DAILY
Shawneetown, Illinois

MARY BETH EVERETT
Springfield, Missouri

LURA BAYNE HABICH
Cecilia, Kentucky

HELEN DENKER
Webster Groves, Missouri



Mary Beth Everett Lura Bayne Habich Helen Denker

Freshman Class

MARIE WITTRICK
Webster Groves, Missouri

CATHERINE VEHSLAGE
Webster Groves, Missouri

MARGARET LUDDEN
St. Louis, Missouri

VERONICA RYAN
Mt. Horeb, Wisconsin

ALICE CLARKE
St. Louis, Missouri

CATHERINE GEARY
Highland Park, Illinois

DOROTHY O'KEEFE
Montgomery, Alabama

ANITA BAREIS
East St. Louis, Illinois

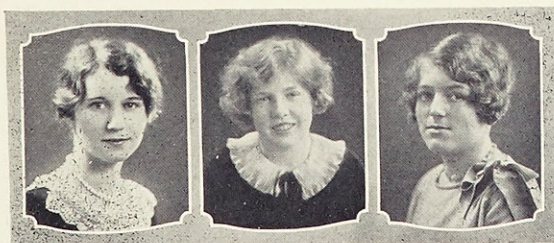
IRENE TIERNEY
Webster Groves, Missouri



Marie Wittrock
Veronica Ryan
Dorothy O'Keefe

Catherine Vehslage
Alice Clarke
Anita Bareis

Margaret Ludden
Catherine Geary
Irene Tierney



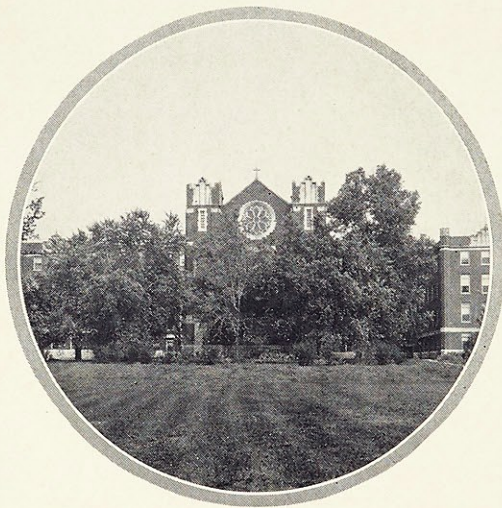
Adelaide Murphy Betty Sharp Thelma Pape

ADELAIDE MURPHY
St. Louis, Missouri

BETTY SHARP
Kansas City, Missouri

THELMA PAPE
St. Louis, Missouri

The
LAURETANUM



The Chapel

19

20

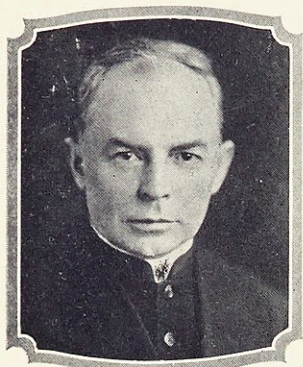


ACTIVITIES



Organizations

The Honor Society



Rev. F. V. Corcoran, C. M.
Moderator

In 1926, under the direction of Reverend Doctor F. V. Corcoran, C. M., the plans for a National Catholic Women's College Honor Society were formed. The new society will be a sister organization of the Alpha Sigma Tau, the Jesuit honor society, for its principles are based on the same three requirements—scholarship, loyalty and service. Through the untiring efforts of its moderator, Doctor Corcoran, the Women's Catholic Honor Society will undoubtedly some day attain the same national repute as is now held by the Phi Beta Kappa, the national non-sectarian honor society.

The charter membership was selected last summer at Detroit when the Catholic Educational Association held its annual convention. In the Association, there is the Conference of Women's Colleges with a membership of nearly thirty institutions and of which Doctor Corcoran is Chairman.

In colleges whose graduating classes number less than forty, three members may be chosen for the National Honor Society. Webster now has its three charter members, and in May members will be chosen from the Class of '28 for the National Society, while members of the present Junior Class will be named as honor students for their senior year. Plans are being made to hold a convention at Webster College during the summer for the purpose of drawing up the constitution, naming the society, and deciding on a symbol for the organization.



Theresa Shea

CHARTER MEMBERS

Margaret Peters

Dorothy Monarch

The Student Association

The rapid growth of Webster brought new problems into existence, problems which could be met only through the cooperation of the student. Thus it was that in the year 1926-27 a small group of girls gathered together to discuss the proper means of meeting the new situations, and it was decided to form an organization whose aim should be to cooperate with the faculty in maintaining the ideals and principles upon which this institution was founded.

Like organizations of this kind it required months of planning and it was not until September 27, 1927, that any formal steps were taken. It was then definitely decided that it was not to be a disciplinary or religious organization but one which sought to emphasize school spirit by encouraging good-fellowship and love for morality, loyalty and scholarship.

The members of the Council for the year 1927-28 are: Marta Brown, president; Rose Malon, vice-president; Edith Glosemeyer, secretary; and Gertrude Jolley, treasurer. Other members of the Council are Pearl Broderick, Mary Powers, Thelma Coyne, Marguerite Barthel, Helen Eaves, Margaret Vollet, Eileen Fleming and Alice Widmer.

The attention of the Association for this year has been directed mainly to the work of getting students for this next year. The new building will make Webster one of the finest and best equipped schools in the Middle West and every member of the Student Association is determined to continue the work so far done and thus assure Webster College a permanent place among the foremost Catholic Women's Colleges.



Marta Brown
President

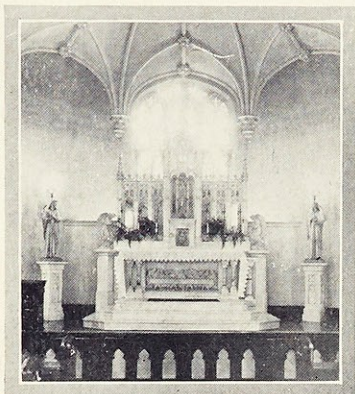


Rose Malon
Vice-President

Edith Glosemeyer
Secretary

Gertrude Jolley
Treasurer

Sodality

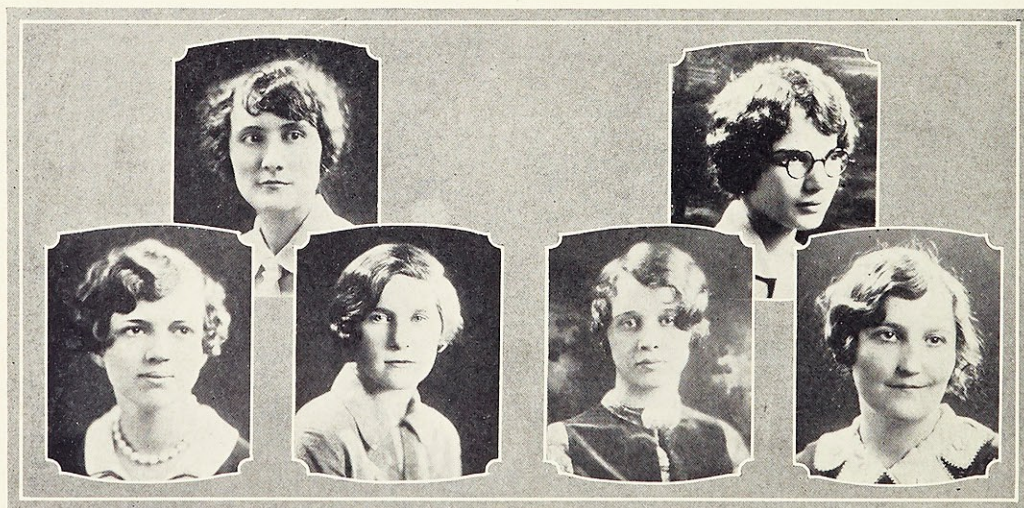


Main Altar in
Chapel of All Saints

Isn't it strange that goals have been reached and dreams realized; that empires were conquered and fortunes amassed just because somebody wanted to do these things? Consider the more commonplace achievements of you and me, what has been the motivating force of each one of them? Why the fact that for some particularly great reason, we wanted to achieve, of course!

But what has all this to do with the Sodality at Webster College? Simply this: The Sodality School, directed by Father Lord, sent out Sodalists who were positively permeated with the idea of securing, in their own College or High School, "Personal Holiness" and "Active Catholicity" because they wanted to."

At Webster, all the spiritual organizations were united in the Students' Spiritual Council. The Eucharistic Committee resolved to foster daily attendance at Mass and Holy Communion. The Literature Committee has formed a bi-monthly Reading Club, at the meetings of which each member reports on some phase of Catholic literature that is always available in the section of the library exclusively devoted to that purpose.

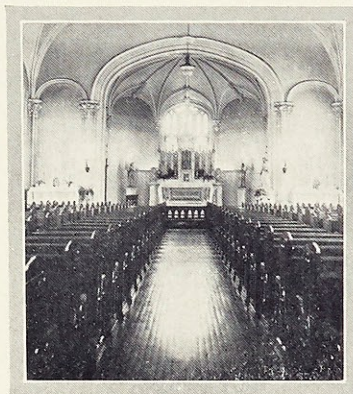


C. HUMMERT, *Prefect*
E. GLOSEMEYER H. MCGUIRE
Secretaries

E. CORRIGAN, *Vice-Prefect*
M. BROWN J. STIRITZ
Treasurers

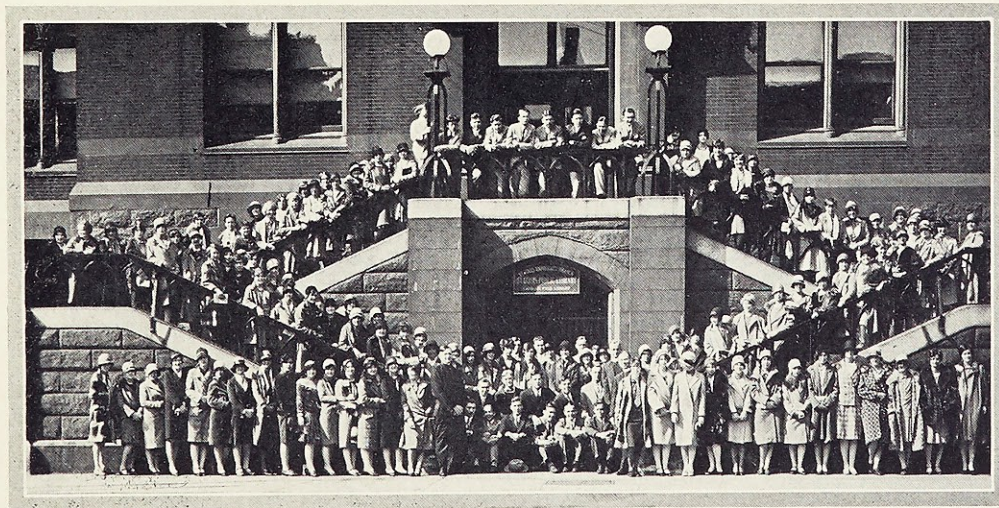
Sodality

The Mission Committee has stirred up its usual enthusiasm by a monthly Mission Mass, by giving sales, and raising money for our Sisters in China, finally by securing funds sufficient to send three colored children to Catholic Schools. The Publicity Committee has each week inspired the Sodalists by means of attractive and valuable pictures and mottoes on the Spiritual Bulletin Board as well as by the blue and white Service Flag hanging above it. The Membership Committee planned a very beautiful program of Reception for the new members, in order that that day might be perpetuated by pleasing memories. The Social Committee conducted a huge Carnival to help pay the debt incurred by the new addition to Webster College. Because our Sodalists wanted to make Catholic College Education available to many more students throughout the world, the dream of a Greater Webster is being realized.



*View of
Chapel of All Saints*

To our Reverend Chaplain, whose untiring efforts for our spiritual advancement have made possible the accomplishment of many of our undertakings, and to our dear Sisters, whose example and admirable sacrifices have been a constant source of inspiration to us, the Sodalists extend their most heartfelt appreciation and their deepest gratitude.



Sodality School Conducted by Rev. D. A. Lord, S. J.

C. S. M. C. --- Poetry Club



Katherine Cummins
Secretary

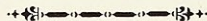
Anne Carr
President

Marie Reynolds
Vice-President

Marian Lane
Treasurer

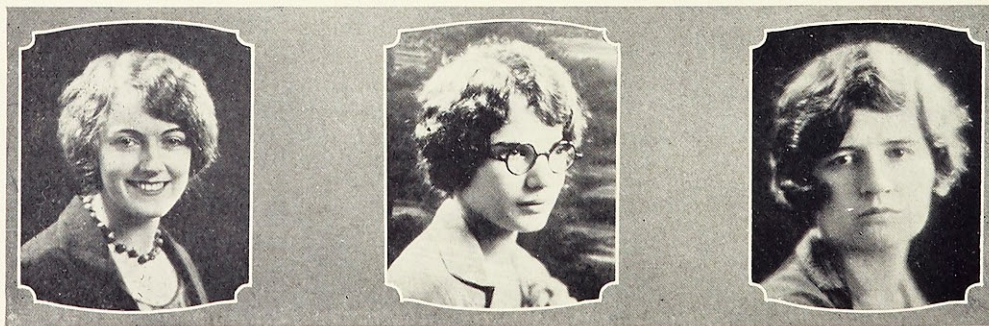
The Catholic Students' Mission Crusade was organized in 1918, by Mr. Clifford King, then a student at Saint Mary's Mission House, Techny, Illinois. It has met with the approval of the Holy Father, who has seen fit to grant to the Crusaders of today privileges similar to those granted to the Crusaders of old.

Webster is represented in this great organization through the Nancy Haven Unit. It is an organization that is worth while, as it helps one to help one's self—and others—to Salvation.



"Because we want to", our Sodality slogan, might be applied likewise to the brief history and formation of Webster's Poetry Club. The growing Webster stood anxiously waiting for student club activity to branch forth, and we "poets" got together "because we wanted to" and formed the nucleus of what we hope is destined to be one of the finest organizations of its kind in the Middle-West.

The Club is just beginning its second year. It has been, however, officially organized with a legally adopted constitution providing, among other things, for restrictions of membership such as the nature of the organization warrants.

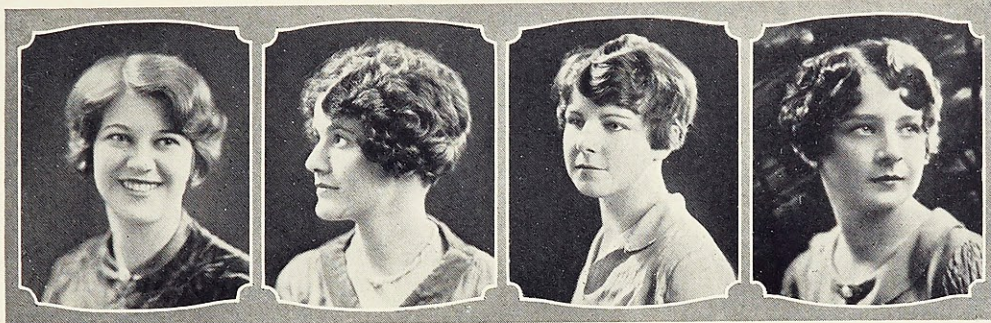


Marian Lane
Vice-President

Elizabeth Corrigan
President

Laura Archer
Secretary

W. A. A. - - - Mathematical Club



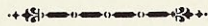
Ellen Quirk
Secretary

Gertrude Jolley
President

Orient Weis
Vice-President

Thelma Coyne
Treasurer

The Athletic Association, organized in 1920, is one of the major organizations of the college. High standard in scholarship and athletic ability are the requisites necessary to be one of its members. The Association sponsors all the athletic achievements of the college, and works hand in hand with the Athletic department headed by Miss Barthel. It is a real live organization, and has accomplished a great deal in furthering interest in Webster's athletics.



The Mathematical Club of Webster College was organized in October, 1927, under the guidance of Sister Borgia, Dean of Studies, and Director of the Department of Mathematics, primarily to foster an interest in mathematics among the students. Any student or alumna of Webster College who has mathematics for her major or minor subject may be a member.

At least two papers on matters of interest to students of mathematics are read at every meeting. It is also planned to have men prominent in the mathematical world to address the members.



Rose Malon
Vice-President

Marta Brown
President

Marie Cregan
Secretary-Treasurer

The
LAURETANUM

*Life's little joys—those rainbow hours
When the world is sweet with the breath of flowers—
How much more beautiful and fair
When they are joys that many share!*

*Life's little worries, life's little trials,
Stumbling blocks stationed on life's many miles,
Life's undertakings, mammoth or small
Lose half their burden when shouldered by all.*

*Thoughts of our school days live on unimpaired
Because of the joys and the sorrows we've shared;
Something attempted was then something done
Because it was never the labor of one.*

—C. Hummert.



Athletics



Athletics



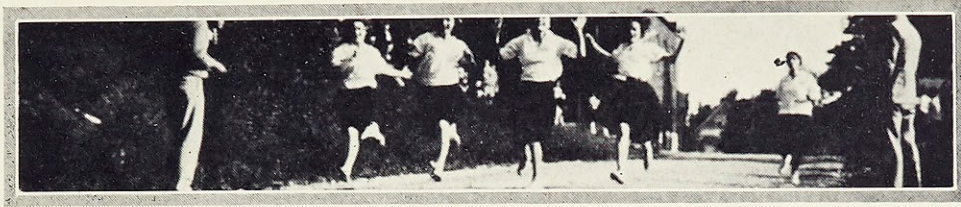
Juanita Abell

A shrill whistle—the rush for gym clothes—the dash for Idle Hour—the line up—the ever pleasant voice of our athletic director bidding the girls “Forward march!”—and “they’re off” for that fairyland where old King Sport holds sway. For that is just what the athletic hour at Webster has come to mean to the girls under the able supervision of Miss Barthel who came back to school this year laden with plans for a bigger and better Athletic Department.

Working hand in hand with the Athletic Association, Miss Barthel has inaugurated a new point system for athletics. For the performance of the different sports those participating receive an allotted number of points, the aim being to receive the W. C. emblems, especially the final large “W” which is the big goal of every Webster athlete.



A Few of the Fair Contenders for the Cup



Basketball

"Oh, Ann, don't forget basketball practice tonight!" The old familiar war cry! But always met with that ready response of good will and enthusiasm among the basketeers who have practiced persistently through long tedious hours, in order that Webster—the dearest name in the world to every Websterite—might not go down in defeat.

There has been great enthusiasm this year in the struggle for the inter-class championship. The games have been closely fought contests, and the final victor has not yet been decided. Not less enthusiastic have been the games scheduled with outside teams. The very great interest in basketball clearly testifies that this is Webster's favorite sport.

As we go to press word comes that the Freshmen have been victorious in the basketball tournament.



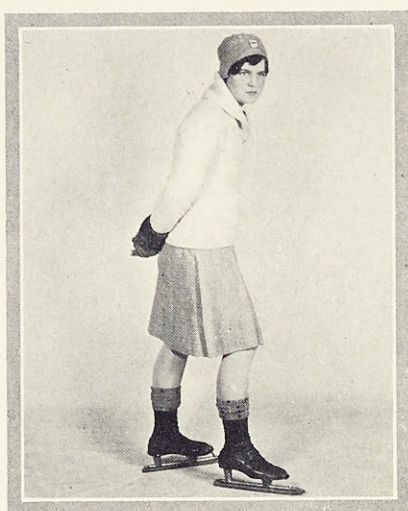
Curley Coyne



Our Big Squad



Skating and Riding



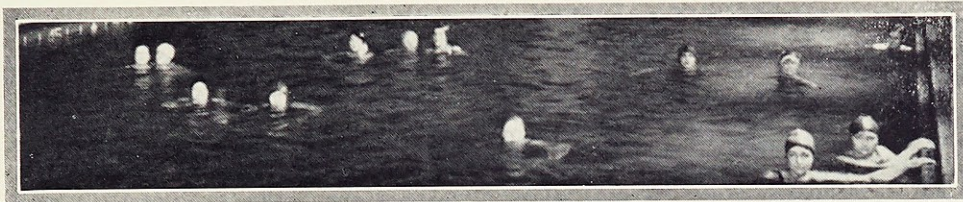
Anna Marie McDermott

"But I just can't!" Day by day such protests are disappearing from within the walls of the Winter Garden as the girls are mastering the great white glassway. When the season draws to a close, there is to be an inter-class tournament in which each class will enter its best contestants.

This year the devotees of horse back riding are enjoying the privilege of following the trails at Osage Country Club. That the girls are taking advantage of this privilege is well shown by the number of points accredited to several girls through this sport, and undoubtedly, the cinder path will call many more as soon as spring ushers in its golden days.



Winners of the Cups

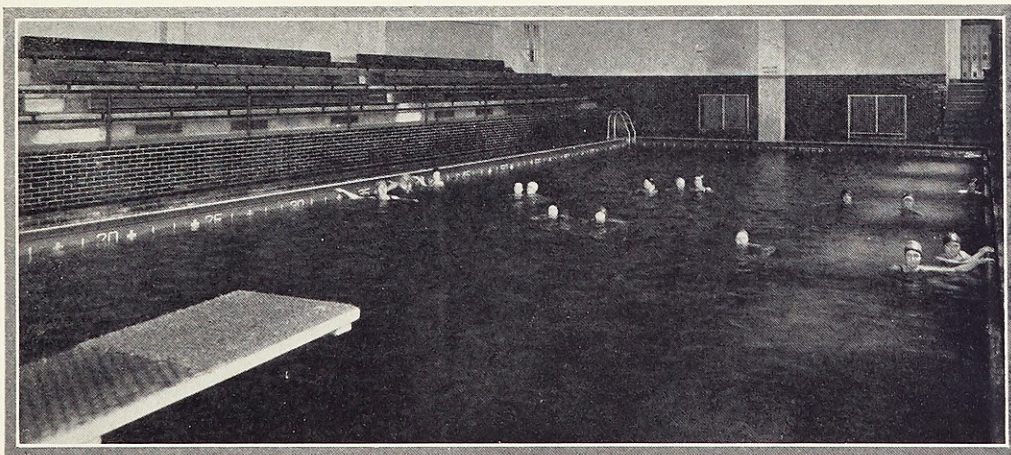


Swimming

This year the Town Club has extended to Webster the courtesy of using its indoor pool at any hour. Under the supervision of the club's able instructor the girls are training for the races which are to be held in the late Spring. The meet is to be carried out on the same basis as the tennis tournament, the winners gaining points for themselves and also for the class which they represent. Likewise, the diving board is being greatly overworked by enthusiastic contestants for first place in diving honors. As the half-holidays and Saturdays draw near, the familiar saying, "See you at the Town Club" becomes a byword in Webster's halls.



Mary Cook



A Saturday Morning at St. Louis University Pool



Tennis and Golf

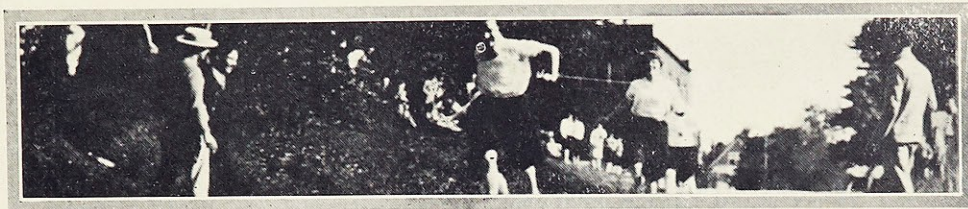


Eleanor Frederic

With nature's recalling of the winter's snow and ice in order to make way for the spring sports, we shall find the tennis rackets and golf clubs coming into evidence. This year we are expecting that the tennis court will be the scene of much energetic practice, because of the enthusiasm over the coming tournament which promises to be a real live contest. The winner and runner-up are to receive points on their individual record and also points for their respective class towards the class championship. No wonder everyone is getting her racket in readiness for all Webster is watching and waiting for the day when our own "Helen's" and "Suzanne's" will display their skill.



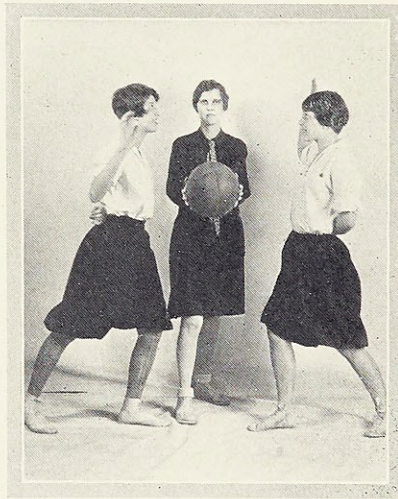
The Winning Jump on Field Day



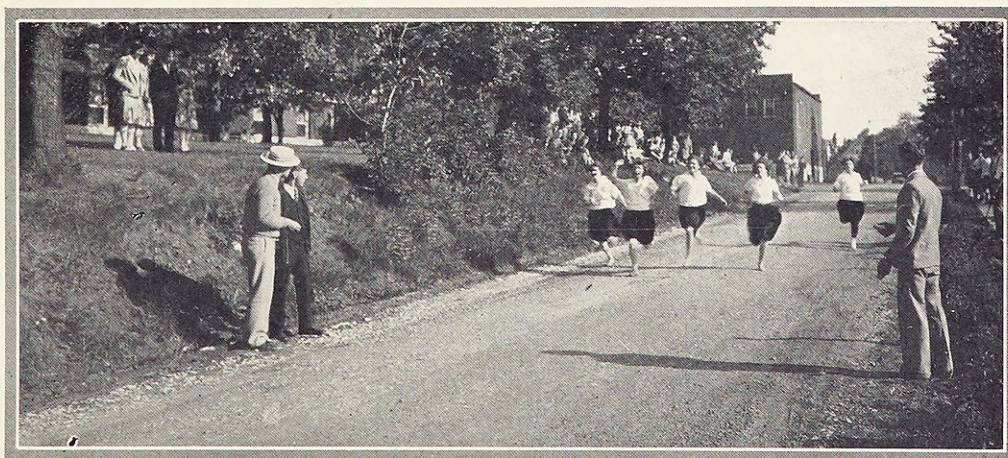
Field Day

May! and the sun shining in all its glory for Webster's big event, and the culmination of all our athletic endeavors throughout the year.

The moment arrives. Miss Barthel gathers together all the contestants—excitement, and that tense feeling just before the first event—position on the line—the gun with one command of "Go", and off they go down the stretch of white road. "Who, did you say, crossed the line first?" "Orient Weis, of course." And on throughout the afternoon with event following event until the close of the day when the happy and proud possessors of the blue, red and white ribbons, wind their weary way homeward with their laurels.



Coach G. Barthel
E. Quirk E. Dunn



A Thrilling Moment in the Fifty Yard Dash

The
LAURETANUM

*The Athlete is a Mercury,
With feet of winged silver;
She lives to run eternally
A messenger of beauty.*

*Her eyes are pointed flames of fire.
Her hands are cool-white beacons:
She runs, but never seems to tire
A messenger of duty.*

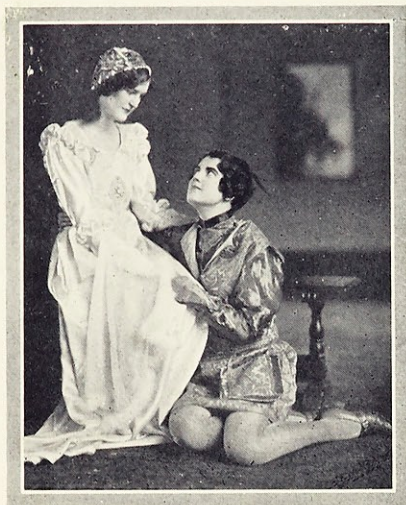
—A. Daniel.



Arts

The LAURETANUM

Dramatics



*Juliet, Mary Powers
Romeo, Theresa Shea*

Among the many things of which Webster College is so justly proud the Dramatic Art Department claims one of the leading places. We venture to say, that nowhere outside of the professional stage is one able to witness more expert performances. The visitor marvels, to say the least, at the skill and ease with which each individual player handles her part no matter whether she be playing the lead in Shakespeare or one of those minor parts which at times seem so insignificant but which in reality entail great effort to insure their perfection.

A great many minor plays are given each year by the members of the Department under the expert coaching of Mrs. Anna McClain Sankey, but all efforts are in reality concentrated on the preparation for the climax—the Shakespeare play—in May. It is always foremost in the minds

of our Loretto Players, and while playing their other roles they strive to gain some cue which will aid them in making the final play of the year a bigger and better one.

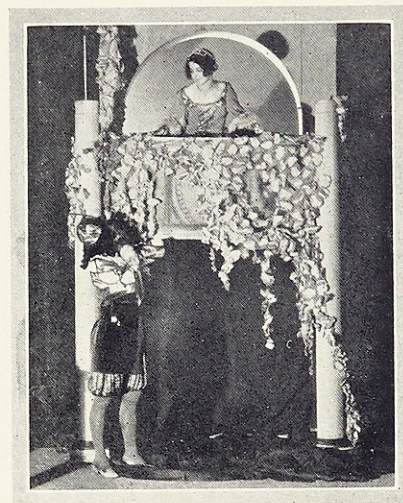


A Scene from Romeo and Juliet

The LAURETANUM

Dramatics

In the spring of 1927 we put forth our best efforts in the staging of "Romeo and Juliet". The success which was a result of our hard work, may perhaps be best judged by the lavish and worthwhile praise that was accorded the production. Never before were people so eager to talk to us about our show. It had been the custom for several years to carry on the work of the Shakespearean play with a double cast in order to stimulate even greater zest among the girls for in dramatics as well as in every walk of life "competition brings forth the best of efforts". The role of Romeo was aptly portrayed by Theresa Shea and Juanita Abell, while the corresponding lead of Juliet was just as well acted alternately by Thelma Coyne and Mary Powers. Other important roles were played by Agnes O'Connor, Rose Malon, Helen Stuckstede, Romona Jamieson, Dolores Gillen, Edith Glosemeyer, Margaret O'Leary, and Margaret Barthel.



Balcony Scene, Romeo and Juliet

The stage settings and lighting effects used in this play were unusually clever and effective and were the work of the Stage Craft Class which is under the very able direction of Sister Marie Anthony.



Colonial Dance from the Vaudeville

The LAURETANUM

Dramatics



Elizabeth Coakley as Mrs. Capulet

Next came our Student Vaudeville which, since its introduction by the Sophomores of 1925, has been an annual event and needless to say a very attractive one. The Vaudeville is not under the direct auspices of the Dramatic Art Department but is nevertheless to be included in this section for it illustrates the dramatic efforts of a group of Webster girls. It is under the sole direction of one of the girls and the ideas used are for the most part original. One of the cleverest features of this particular vaudeville was the burlesque of a scene of Romeo and Juliet. Another very amusing feature was the so-called "Dog Chorus" with Dolores Gillen playing the lead assisted by Gabrielle Pfeffer as the "Dog" and a chorus of six, including Frances Ernst, Bernice Smith, Catherine Cody, Ellen Quirk, Susie Mae Mooney, and Olive Crivello.

As we go to press plans for the 1928 Vaudeville are under way. The Senior class, who are in charge, has appointed Juanita Abell as Program Chairman, and Helen McGuire, Business Manager.



The Dog Act from the Vaudeville

The LAURETANUM

Dramatics

It has long been the custom of Webster for the Junior Class to entertain the Faculty and Student Body the night before the advent of the Christmas holidays. The Junior Class of '27, being able to boast of considerable dramatic ability among its members, decided to enhance their program with a play and chose one by Father Daniel A. Lord, S. J. entitled "Mrs. Castlemaine's Christmas Dinner". The story was one of Revolutionary times with a touching lesson, and each character was excellently portrayed. The leading parts were played by Juanita Abell, Edith Glosemeyer and Marguerite Barthel. Another pleasing actress was Pearl Broderick, who in the role of Santa Claus won the applause of not only the Freshmen who received gifts from the overflowing bag, but from every one present. Good old Saint Nicholas also remembered the members of the faculty with individual gifts, and to the sisters of the college he left enormous baskets of fruit and candies. Everyone departed complimenting the hostesses on their party.

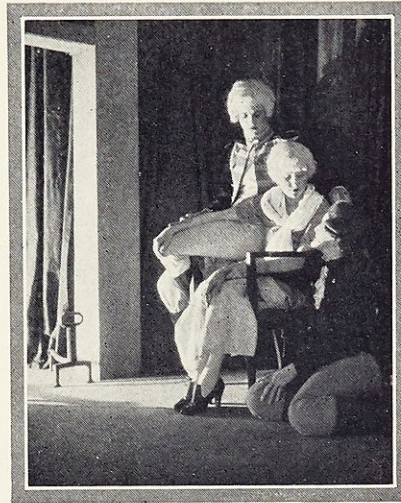
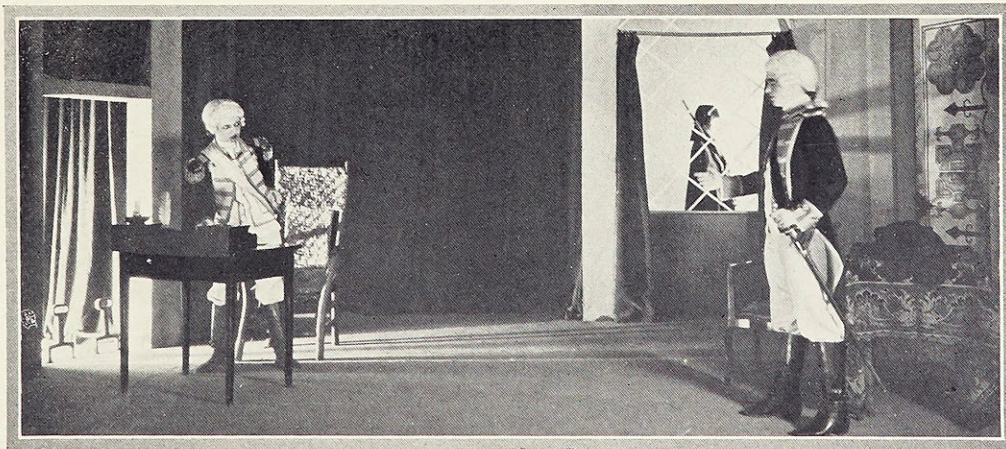


Tableau from Mrs. Castlemaine's Christmas Dinner



Scene from Mrs. Castlemaine's Christmas Dinner

Dramatics



R. Hynes as Phylis

In order to enable our Freshman Dramatic Class to display their ability, a group of sketches and impersonations was given early in November. A particularly novel feature was "A Midnight Fantasy". A scene in which A Maid of 1927, Dorothy Walsh, met A Maid of 1750, Callista Kelly, whereupon each disclosed her desire and longing for sweet sincere romance. "Ashes of Roses" was a charming old-fashioned romance with Bernice Wolff, Ann Ryan, Rosemary Hynes and Thelma Pape in the cast. Delightful readings were given by Ann Ryan, Thelma Pape, Alice Widmer, and Catherine Cody. Helen O'Brien gave a charming reading "A Southern Girl at a Dance", and the Sketch "School Days" was the cause of much enjoyment and of many a hearty laugh from the audience.

Not to be outclassed by the Freshies, the Senior Dramatic Class followed closely with a group of especially fine plays, "Golden Hope" being the feature of the evening with "Rehearsal" and "For Distinguished Service" completing the program. Cathryne Hummert, Mary Powers, Thelma Coyne, and Marguerite Barthel were unusually good in these plays.



Scene from Ashes of Roses

Dramatics

As a preface to the Carnival proper a group of plays was given on the Sunday evening preceding it. They were three in number "A Fan and Two Candlesticks", "The Opera Matinee" and "Ronald Castlemaine's Romance," with the entire cast in masks. It was an imitation of the old-fashioned stilted romance in an early nineteenth century setting, with the masked actors pantomiming, the lines being read off stage. The Freshmen dramatic class displayed their ability in filling the speaking parts, while the older girls filled the difficult pantomime roles. Such plays have been produced in America only twice previous to this performance, the first time in New York and then in Chicago. Many comic effects added greatly to the success of the play and once again a point was scored in favor of Webster's "Little Theatre".



Yesterday and Today

Webster, for some time, has been trying to further the Little Theatre Movement, and as each play is given we are more convinced that she is doing her share toward it, and it is hoped since Webster was one of the first to take up such a movement her success will be permanent.



Scene from Fads and Fancies

Commercial Art

The field of advertising and publicity work today offers to those so talented, a career which is most interesting and remunerative in proportion to the capacity of the individual.

In like manner, its sister art, Commercial Designing, extends to its followers an equally promising field of activity.

This is an era of prosperity unprecedented in the history of America; and advertising, since it is the means by which the product is placed before the mind of the public, is therefore its greatest selling factor and it is directly conducive to this prosperity. There is no doubt whatsoever that Commercial Art is absolutely necessary to advertising, because it is through the artist's illustration that the advertisement is brought to the attention of the public.

The countless activities engrossing the mind of the average American of today make it absolutely necessary that advertisers present something so striking and forceful in character as literally to force the attention of the people to the consideration of the product advertised.

The Commercial Art course at Webster is designed to impart a thorough training in the production of work such as fashion designing, and copying, posters, magazine illustrations as well as students' original ideas put into execution under the guiding influence of the art director, all of which will fit the student for the permanent place in the advertising offices of the business world. There is also included in the curriculum a two year course in Interior Decorating which includes a study of art as applied to the decoration of the home.



View of Commercial Art Room

Conservatory of Music

There is one distinctive mark that belongs to music, and music alone. That is its freedom. It is a will-o-the-wisp to break the rainbow into cascades of falling color or to gather the silver stardust and sprinkle it into the hearts of men, for Music is freedom! On account of this today students in colleges and universities, conservatory and studio, are being imparted the basic fundamentals of music, in order that they may go forth and sing the song of peace to a war-torn world.

Prominent among these institutions is Loretto Conservatory of Music of Webster College, incorporated under the State Law of Missouri to award degrees, diplomas, and teachers' certificates, in music. Closely interrelated with the other departments of the Liberal Arts Institution it enables the young artist to develop a broad and cultural education as the students are permitted to elect courses in the college departments that are credited to a Bachelor of Music degree. Included in the curriculum are Piano, Voice, Violin, Pipe Organ, History of Music, and Appreciation, Theory, Harmony, Ear Training, Counterpoint, Musical Form, Sight Singing, and Ensemble.

The Faculty of Loretto Conservatory has taken care to secure every opportunity for the preparatory artist by bringing to the Conservatory noted virtuosi and singers, among whom may be mentioned such masters as Paderewski, Kreisler, Rachmaninoff, Cortot, Ganz, Willard McGregor, Mr. and Mrs. Ernest Toy.

Also, in order to bring out more fully the students own self-expression and initiative in the musical world, a Choral Club has been organized under the direction of the Faculty, which offers the young artist various opportunities for stage appearance and solo work.



Gertrude Jolley
Treasurer

Juanita Abell
President

Laura Archer
Vice-President

Frank Ward
Secretary

Violet Sauer
Librarian

The
LAURETANUM

*God fashioned the gifts of the muses
Lest grosser pleasures cloy.
'Twas thus that souls of mortals
Breathed anew, 'mid aesthetic joy.*

—L. Archer.



Publications

The LAURETANUM

The Loretine



Laura Archer
Editor

It was 1907 that marked the appearance of the first issue of the LORETTINE which was then but a small school publication, the official organ of Loretto Academy in Kansas City. Sister Louise it was who supervised the making of that first issue and who guided it safely through that first crucial period of its existence. Encouraged by the enthusiasm of Sister Louise whose universal interest piloted it through all these twenty-one years, the LORETTINE has evolved into that worthy periodical which is known throughout the country as the quarterly magazine of Webster College.

The purpose of our present LORETTINE is to reflect in a concrete way the manifold interests of the students of Webster, through the medium of short stories, essays, and verse. Among unique sections of the magazine are "Near and Far with the Old Girls", which proves the delight of the Alumnae, and "Just Among Ourselves" which records the social functions, parties, class elections, faculty news and educational activities of the college.

Although the literary aspect of the magazine is given primal stress, we have of late inaugurated the idea of specialized numbers. The specialized issues of this year include the "Alumnae Number", which will always live in the hearts and memories of Loretto Girls since it was a memorial to our dear Sister Louise, the foundress of our college, our Loretine, our ideals; the "Classical Language Number" which by means of various articles dealing with Latin and



Helen McAnulty
Associate Editor

Edith Glosemeyer
Exchange Editor

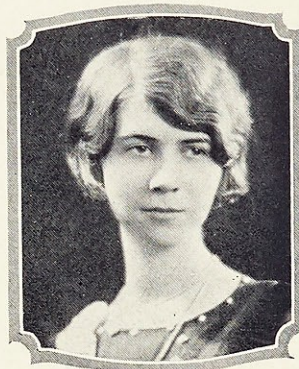
Margaret Mary Brey
Art Editor

The Loretine

Greek culture, and by polished translations from classical prose and verse, gives a keen insight into the cultural and intellectual realms so loved by the true student of classical language; and a number entitled "A Year at Webster", which is intended to present local color of a type that appeals to both students and friends of Webster since it mirrors the collegiate, the intellectual, the social, the religious and the aesthetic aspects of our college. The final number of the Loretine will be issued the latter part of June, and as usual will be an unspecialized issue.

Last year was begun the precedent of an annual literary contest sponsored by the LORETTINE staff. This year the contest is being carried on on a larger scale, the prizes being more valuable and the extent of contributions including essays as well as short stories and poems. Since the prize winning articles are to be published in the issue entitled "A Year at Webster" all contributions are intended to reflect some phase of college life that appeals to the writer.

We are proud of our college quarterly and especially of our precedent of specialized numbers, which has merited similar adoption by other colleges. By our literary efforts Webster is known and judged, hence it is our constant endeavor to plunge our minds and hearts into the creation of a LORETTINE of which Webster will always be proud.



Catherine Rohan
Advertising Manager

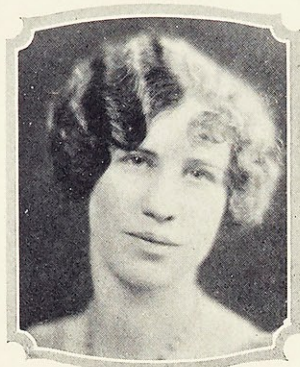


Marcella Mediconi
Nerinx Hall Editor

Mary Powers
Circulation Manager

Marie Reynolds
Associate Editor

The Web



Rosamond Smith
Editor

A task that gives genuine pleasure and fascination is the editing of a college newspaper—not pleasure and fascination just for the first time, but even after scores of times, in spite of the many difficulties that arise week after week.

While THE WEB is not the most pretentious of the Webster College publications, it is undoubtedly one of the most necessary for the student body and is the only one not supported partially by advertising. THE WEB, the official newspaper of the college, is the youngest member to join the publication list.

Making its debut into the world only four years ago, already it has passed the stage of babyhood and infancy. The first issue of THE WEB, published promiscuously throughout the year on a mimeographed sheet, might be termed a bulletin issued to the students telling of events that had happened two or three weeks before.

The second WEB was a vast improvement. Twelve copies were issued throughout the year and they were printed, too, even though a cheap printer had to be engaged who knew nothing of the technicality of newspaper printing. Bridge parties and sandwich sales were given for its maintenance.

THE WEB'S third advent also suffered financial embarrassment, for by this time the bridge parties and the sandwich sales were not so successful.



Lillian Woltering
Editorial Editor

Marie Rice
Club Editor

Nellie Mae McDonald
Feature Writer

Ellen Duggan
Business Manager

The Web

THE WEB this year has put out a newspaper regularly that is far superior to the newspapers of many other colleges much larger in enrollment than Webster. THE WEB contains real headlines and decks, and the pages are well balanced. THE WEB is a criterion of good newspaper style. No partiality was shown in the selection of stories; timely news interestingly told was THE WEB'S motto. Another feature was the eight-page Carnival Number which was published a few days prior to the carnival in spite of the fact that copy had to be prepared during Examination Week. This number was a huge success and was mailed to a large number of persons interested in the carnival, who were not regular subscribers. THE WEB did its share to advertise the carnival, but it enjoyed doing so.

Much of the credit of THE WEB belongs to the Journalism Class, for they were enthusiastic and devoted to the school newspaper, and acquired the ability of getting material in on time. At first, their stories had to be entirely rewritten, but as time went on they became real newspaper reporters and acquired a true journalistic style. Of course, Miss Anita Mueller, instructor in Journalism, is responsible to a large extent for this.

THE WEB staff, too, should be complimented. Both the editorial and business end did their share to make THE WEB a real newspaper. And it is no easy task to pay bills when there is no money, and no easy task to write news.



Jeannette Stiritz
Assistant Editor



Anne Schilly
Dramatic Editor

Josephine Rabbitt
Circulation Manager

Pearl Broderick
Feature Writer

Margaret Vollet
Alumnae Editor

The LAURETANUM

The Lauretanum



Helen McGuire
Editor.

The history of the 1928 LAURETANUM is soon to be a completed volume. The staff has done all in its power to make this yearbook a symbol of Webster's growth and betterment. The LAURETANUM readers, whether their criticisms be favorable or unfavorable, will compose the final chapter of this history. We hope and trust that the former will outnumber the latter, but whatever the verdict is we feel that we have done our best—more is not possible.

The LAURETANUM has now been in existence for half a decade so it can no longer be in the beginner's class. To be as good as its predecessors it must improve, for time should broaden and better our ideas. Keeping this fact in mind we have tried to create a volume which would truly depict what is probably to date Webster's greatest year. We have endeavored to draw for our professors, teachers, fellow students, alumnae and friends an artistic picture of this school year, into which have been crowded many and varied activities. Clubs have been organized, a student council has been formed, an honor society has been instituted, the carnival, the biggest social event ever sponsored at Webster, has been successfully carried out, the new residence hall, a concrete example of Webster's progress, is nearing completion and the largest class ever to graduate from Webster will leave her



Marguerite Barthel
Advertising Manager



Rosamond Smith
Assistant Editor



Pearl Broderick
Assistant Advertising Manager

The Lauretanum

portals in June. Truthfully to record all this has been the ambition of the 1928 LAURETANUM Staff. If this portrayal is received with welcome and appreciation we shall be pleased; if our year's labor will bring added laurels to Webster we shall be amply repaid.

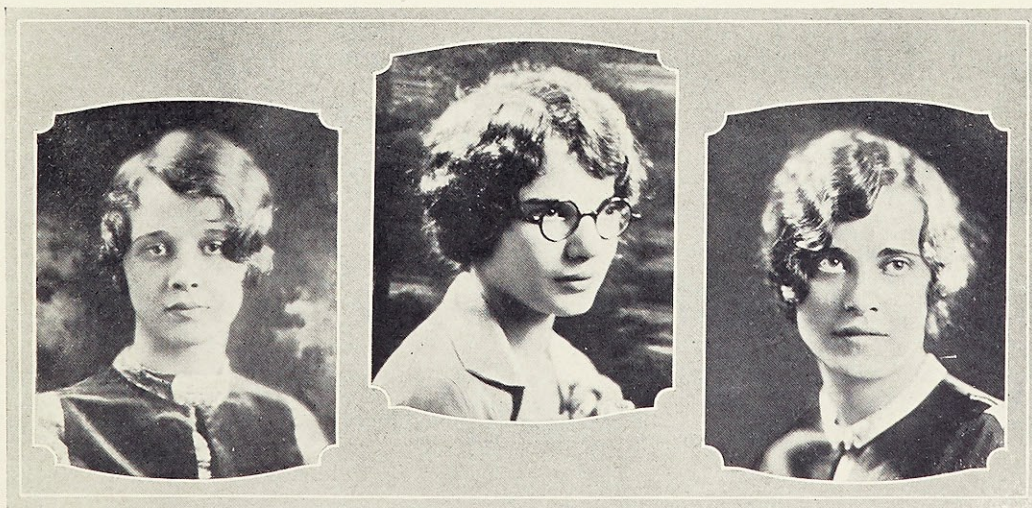
Due to uncontrollable circumstances we have worked under serious financial difficulties. We are not asking, however, for sympathy but merely for a just commendation of this annual which we present to you. We feel that just as Webster College progresses so must the LAURETANUM, for it must be worthy of the institution which fosters it. But, just as it has taken time, money, energy, and many hours of planning to attain the heights which Webster now holds, so has it taken these same elements to edit the 1928 LAURETANUM.

By especially stressing the first and the last of these elements—namely, time and planning, we have eliminated a great many of the financial worries.

Without a doubt each LAURETANUM which is to follow will make vast improvements, but we feel that we are justified in saying that the fifth volume of the LAURETANUM has set a goal for the ones which are to come after, just as the first paper-covered volume of five years ago paved the way for its predecessors.



Anna Marie McDermott
Business Manager



Marta Brown
Treasurer

Elizabeth Corrigan
Art Editor

Juanita Abell
Assistant Business Manager

The
LAURETANUM

*They're like three mighty megaphones,
Our peppy publications,
Through which we broadcast near and far
Our waggish Webster-ations.
The Web's a Nifty News sheet! 'Tis
Our bi-weekly expectation;
The Loretine is literature
Demanding admiration;
The Lauretanum you'll admit
Holds you in fascination.
And so in spite of our conceit
We want congratulation.*

—E. Corrigan.



Social

Senior Prom

The evening of February 18 was marked by the greatest social function in the history of our Alma Mater, the Senior Prom. Amid the work and worry of exams, our plans and then the realization of our plans for the carnival, the Prom was not forgotten. Elaborate preparations were being made all the while and everyone was looking forward to the greatest of Proms.

Finally, the dreams of the heralded event materialized and the reality excelled the expectations of the students by a great margin. The scene took place in the Crystal Ballroom of the Chase Hotel. The tables decorated with red rose buds were arranged on both sides of the spacious room and the orchestra served as a link between the tables at the farther end. The center of the room was given to dancing.

Dinner was served at eight o'clock and thus the Prom began. Dinner and dancing were enjoyed throughout the evening to the strains of the orchestra's delightful music. During the third course of the dinner the favors were received. The fair sex were presented with beautiful silver link bracelets in the center of which was "W. C. '28", while their escorts received black leather key ring cases with the Webster College crest in gold on them.



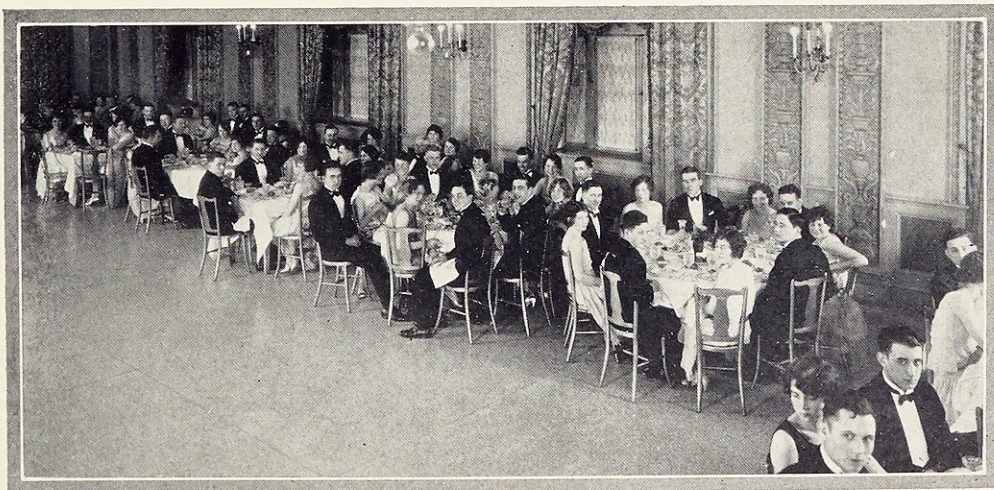
Prom of 1928

Senior Prom

The Prom was marked from beginning to end by a consistent tone of dignified elegance. Its success was the result of many hours of work and preparation and it was a function of which Webster can be truly proud.

The chaperones were Mr. and Mrs. Ralph Rosenthal, Mr. and Mrs. J. C. Weiler, Mr. and Mrs. Norman George, Mr. and Mrs. J. T. McNulty, and Mr. and Mrs. Tom Rohan.

Webster can again be proud of the fact that she was well represented at the St. Louis University Prom given at the University gym on February 22, 1928. Miss Helen Simon, '27 was the retiring queen of love and beauty. Miss Simon with her queenly grace and dignity proved worthy of her exalted rank. Miss Juanita Abell, a senior from the class of '28, was chosen by the student body of Webster for their representative. Webster can truly be proud of their beautiful and charming maid, Miss Abell. Every true Websterite's heart beat with pride as they saw her stately figure pass down the long aisle in formal promenade, the night of the great event. Miss Agnes Tuchschildt, '27 was the maid representing the St. Louis U. department of Night Law. Each year Webster has been able to claim some of the representatives of the departments of the University besides her own maid which is, indeed, a very great compliment to any college.



Dinner Dance at Hotel Chase

Dances

When Spring fever grips the students with its mighty clutches it seems that they can no longer carry the burdens of school life. They want to be out enjoying the beauties of nature instead of slaving and toiling with books. A remedy for this fever had to be secured and after much experimenting, counseling, and advising a Spring Dance was decided as the best medicine for it. Thus, the history of our annual Spring Dance. It was given on May 6, 1927, at the Congress Hotel. It was a great success and all honor is due to the Junior Class who arranged and planned the affair.

November 10, 1928, was the date given to the Fall Dance. It is a date worthy to be remembered for it marks the greatest success of informal dances in the history of the school. Arrangements were made at the Forest Park Hotel. Herr's orchestra furnished the music which was very entertaining and so arranged that the program was completed. In fact, the whole dance was overflowing with pep and good times. Praise from the chaperons and students themselves assured the Senior's of their success in sponsoring this great social event.

The annual farewell banquet was held on May 31, 1927. The priests from Kenrick were the guests of the evening. "A good time had by all" is usually the slogan for a social function. Of such kind was this function. Everyone apparently had a good time, and yet, there was a sadness hovering over the whole affair for it meant a parting with friends, with chums, and schoolmates. It would only be a time of weeks and months to some and years to others, and in all probability to some it would be forever. On the other hand everyone was thrilled at the thought of returning home after a year of study and enjoying all the sports and fun that summer offers.



St. Louis U. Prom. Queen and Maids

Banquets

After the banquet toasts were given to the faculty and to the seniors. Miss Edith Glosemeyer served as toastmistress for the evening.

'Twas on the eve of December 16 that our annual Christmas banquet was held. The students filled with the Christmas spirit entered the reception room to receive the honored guests of the evening—namely Mother Linus and the Kenrick priests.

The party proceeded to the banquet room, the decorations of which were carried out in holiday colors. At each end of the banquet tables an honored guest was seated. The seniors had the proud claim of the presence of the Reverend Father Souvay, C. M. at the head of the center table.

At the close of dinner there were a few speeches given by the priests and then Reverend Father Donovan presented the Seniors with their much earned class pins. The pins of 1928 were set with pearls and sapphires. After that event, so dear to the heart of every senior, the next step was to enjoy the entertainment planned for the evening by the Juniors; hence everyone assembled in the auditorium around a beautiful and huge Christmas tree. A very original and clever sketch was given by the members of the Junior class in which the audience heard the sidelights of Webster over the radio. Santa very rudely interrupted the play, but of course, Santa is more than welcome at all times. He had heaps of toys for our baby Freshmen and lovely gifts for the faculty.

The praise for such success should be attributed to the Junior Class who proved themselves worthy hostesses of the evening.



June Banquet



May Day

May, the month of brightness, comes dancing from the east; the flowery May brings youth and joy and warm desire. We welcome May with early songs, and we enjoy May; we revel in its fragrance; for May, the spring of Love and Youth, is not for always.

These were some of the sentiments which were felt on the May Day celebration of Webster College, May 17, 1927. The day was most delightful. The college grounds were delicately hued but not too much so for our May Queen.

The ceremony was a beautiful one, taking place on the Campus where a throne was erected in front of a canopy covered with spring flowers. The Queen wore a becoming evening gown of white crepe, heavily beaded, and carried a bouquet of pink roses. She was attended by four Maids-of-Honor, who wore evening dresses of pastel shades and carried arm bouquets of roses. In her suite were also a small flower girl and a little crown bearer, who carried the crown of



Crowning of the May Queen



May Day

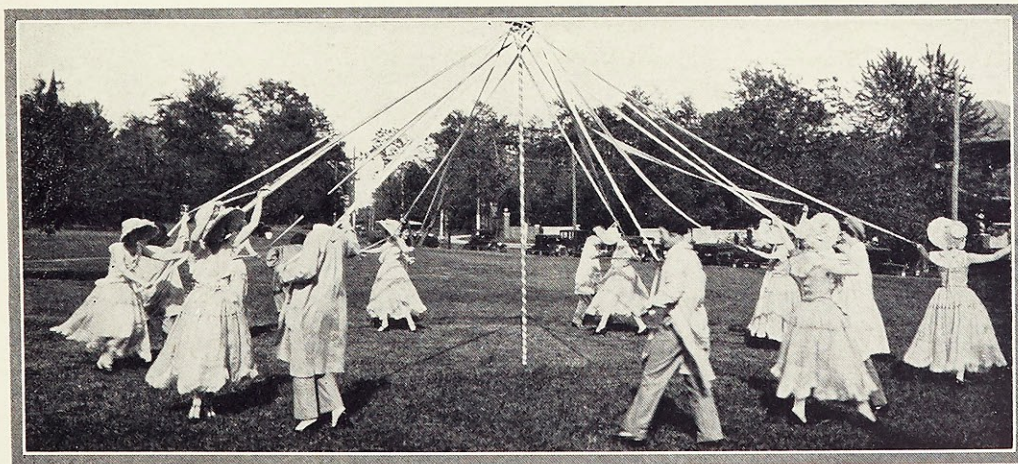
roses. After promenading across the campus, Her Queenship ascended the throne where she was crowned the May Queen of 1927. Before receiving this renowned title she was Miss Juanita Abell, a member of the Junior Class.

After this formality, eight girls dressed in quaint old-fashioned costumes of organdie and eight other girls dressed as artists with long pantaloons, different colored smocks and berets, danced lightly and prettily around the May Pole in honor of the reigning Queen.

And, with Longfellow, we enjoyed the fragrance of the day and of May; now, we will enjoy in memory one of the most delightful of festive days at Webster—May Day

*"Maiden, that read'st this simple rhyme,
Enjoy thy youth, it will not stay;
Enjoy the fragrance of thy prime,
For O! it is not always May!*

"It Is Not Always May"—Longfellow.



May Pole Dance

The
LAURETANUM

*With only books and lectures,
College would be what it's not
So socials, parties, dances
Must complete the perfect knot.*

R. MALON.

19

20



Campus Life

The
LAURETANUM

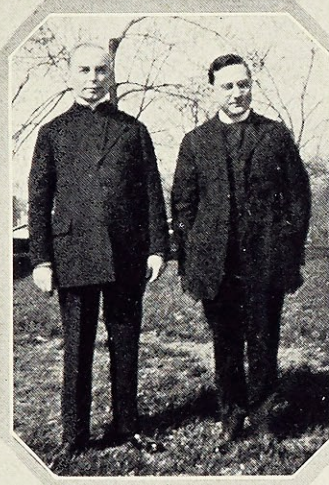
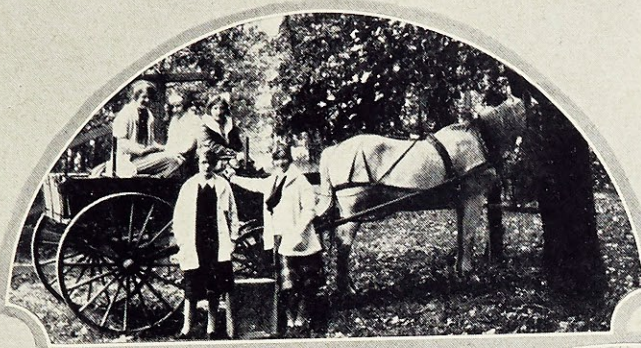


Some Smiling Day Students
Loyal Websterites

A Model T Still Seems Popular
Our Chaplain

After Classes are Over

The LAURETANUM



On a Picnic
Two of our Reverend Professors

Freshman Baby Day
Here and There on Webster's Campus

An Expression of our Sentiments

The
AURETANUM



*May Po'e Dancers
The Coronation*

*Retiring Queen
The Throne*

Queen and Her Court

The
AURETANUM



*Dance of May Pole
Crown Bearer*

*Flower Girl
The Promenade*

Queen and Attendants

19

20

The
LAURETANUM



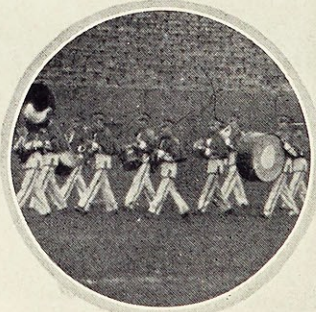
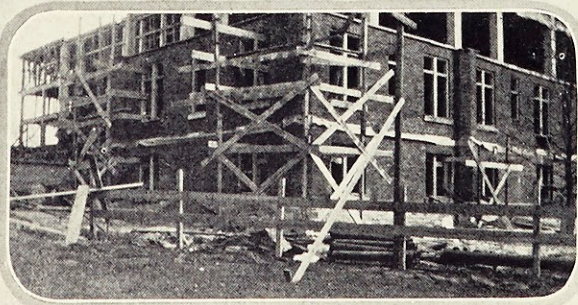
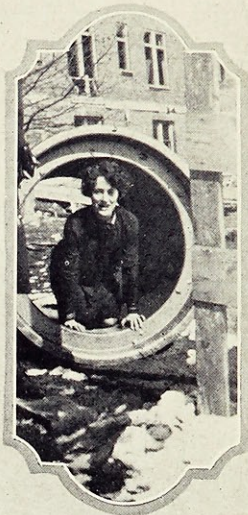
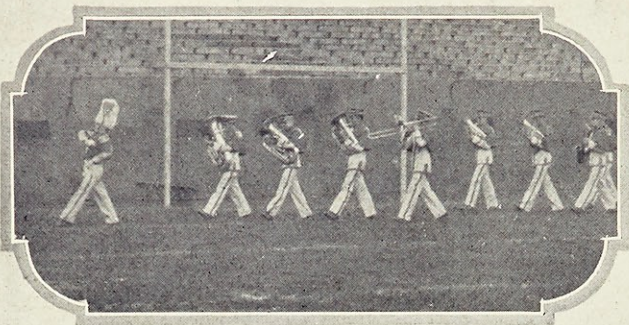
Carnival Booths

The
AURETANUM



Circus Parade

The
LAURETANUM



Leaders of our Parade

Loretto Hall under Construction

St. Louis U. Band

19

20

The LAURETANUM



Followers of Lindy

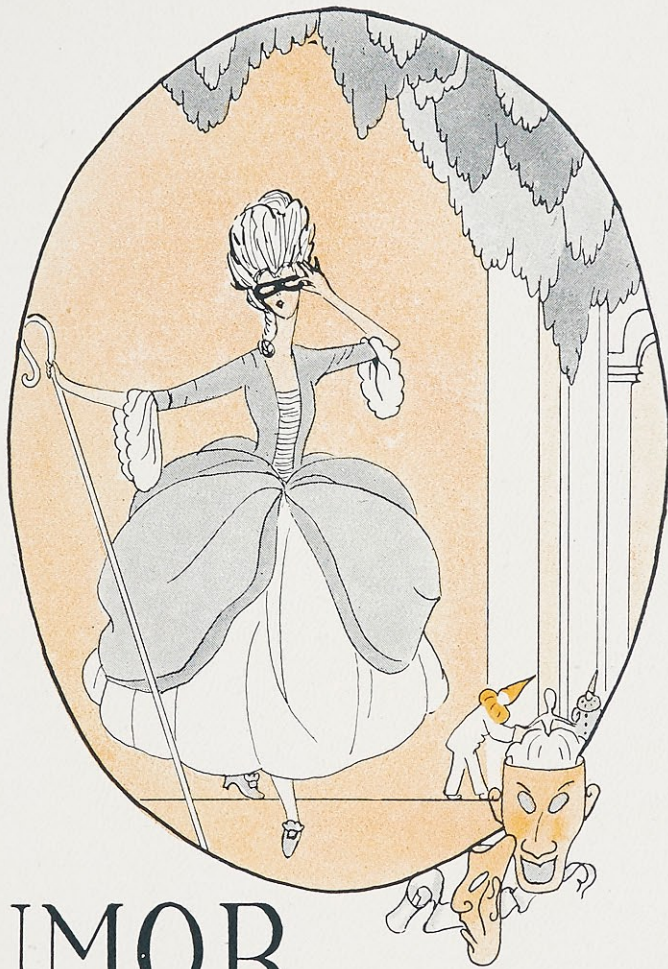
Cars from the Carnival Parade

Students on Class Day

The
LAURETANUM



A Secluded Spot



HUMOR

Humor

The LAURETANUM is no longer an experiment; it has outgrown the age of uncertainty, but this humor section is a new undertaking at Webster. Our conservative minded readers may think we should have been guided by the tradition of other years. We, however, believe in the adage, "To be as good as his father the son must be better than the father," so we have looked around for ways to improve our yearbook. One of the first means that presented itself was the addition of a fourth book for humor. The following pages will record the results of our attempt along this line. We are pleased to be able to offer this section for we feel that the arrangement of humor throughout the ad section will benefit our advertisers, and we feel certain that the students will welcome this little stranger, the last book of the LAURETANUM, and will soon make it feel right at home.

*Thus another book begins
To tell you all the out's and in's*

*Of fun and frolic here at school
In spite of discipline and rule.*

*And whether or not it pleases you
Depends upon your point of view.*

*So recognize a humble start
Upon the humor section's part*

*And since, to please has been our aim
We shall not feel that 'twas in vain.*

The one who thinks these jokes are poor
Would straightway change his views
Could he compare the jokes we print,
With those we do not use.

⋈ ⋈ ⋈

HEARD DURING THE BUILDING OF THE NEW RESIDENCE HALL

Mr. Daly—There's Jim carrying two ladders at a time, and you're only taking one.

Workman—Sure, he must be too lazy to go back twice.

⋈ ⋈ ⋈



The Freshman is grassy and grows
The Sophomore is sassy and blows
The Juniors are brassy and doze,
The Seniors are classy and knows.

⋈ ⋈ ⋈

Hope without action never gets
anywhere.

⋈ ⋈ ⋈

She—Don't you love driving?

He—Yes, but we're in town yet.

⋈ ⋈ ⋈

Neva—Don't you speak to Bob any
more?

Kit—No, whenever I pass him I give
him the geology survey.

Neva—Geology Survey?

Kit—Yes, that's what is commonly
known as the stony stare.—Exchange.

⋈ ⋈ ⋈

HEARD OVER WEBSTER 39

Other end of wire—How did you come out with your exam, Curly?

This end of wire—Oh, Eddie, it was an intelligence test.

Other end of wire—Oh, heavens, don't tell me your average!

⋈ ⋈ ⋈

Look, pop, Abie's cold is cured and we still got a box of cough drops.

Oo, vot extravagance. Tell Herman to go out and get his feet wet.

2MT

I often shed a tear
When I go to bed
For I know so well
The little in my head.

R. Malon.

⊘ ⊘ ⊘

THE KIND OF ETHICS THAT IS NEVER TAUGHT AT WEBSTER—

Yes, my whole business went. I lost everything except my honor—and the property which I'd just had time to put into my wife's name!

⊘ ⊘ ⊘

"What is the hardest thing about ice skating when you are learning," asked the beginner.

"The ice," was the short reply.

⊘ ⊘ ⊘

Freshie—Do you think a girl should be true to her first love?

Senior—Certainly, if she can remember who he is.

⊘ ⊘ ⊘

Take your work seriously, but not yourself.

⊘ ⊘ ⊘

"What could be more sad," said the school mistress, "than a man without a country?"

"A country without a man," answered the pretty girl.

⊘ ⊘ ⊘

Think only of yourself if you want others to forget you.

⊘ ⊘ ⊘

Neighbor—Was your son home for the holidays?

Father—Well, if he wasn't somebody else borrowed the car during Christmas week.

⊘ ⊘ ⊘

"Now," said the teacher impressively, "Why should we endeavor to rise by our own efforts?"

"Because," said Peggy, "there is no knowing when the alarm clock may go wrong."—Exchange.



DOUBTFUL

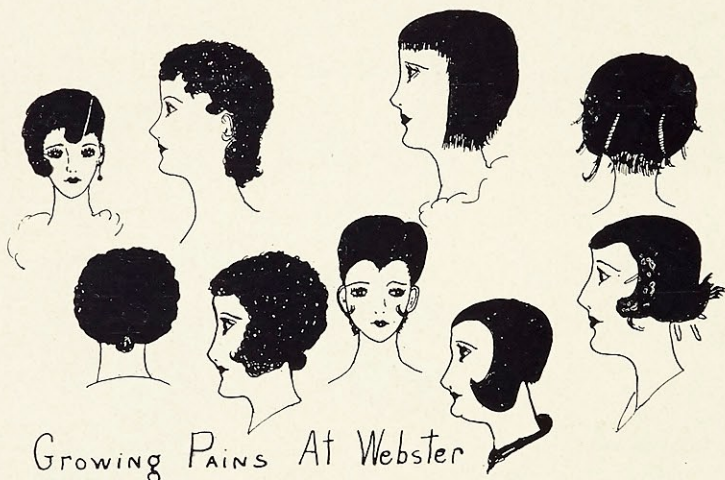
"Now," said the college man to his dad at the football game, "you'll see more excitement for two dollars than you ever saw before."

"I don't know," replied the old gent; "that's what my marriage license cost me!"—Exchange.



Herman—Cheer up old man, why don't you drown your sorrows?

Wilbur—I can't because she is bigger than I am, and besides it would be murder.—Exchange.



Time — 11:59 P. M.

Place — Webster, Third Floor.

Personae—Two Freshies, sleepier than usual.

Kathleen, jumping out of bed begins to say her night prayers.

Thelma — Hey, if you want to hand those in for night prayers you'd better get St. Peter to rush 'em!



CODE OF HONOR

He—Betty is a good bridge player. I can't understand why she did that.

She—Well, you led diamonds, and she never returns a diamond.



A WARNING TO WEBSTER'S COMMERCIAL STUDENTS

"Miss Curlycue," murmured the office manager to the stenog, "I don't wanna be harsh. Nothin' like that. I really don't."

"Let's have the answer," said the damsel nonchalantly. "What's bitin' you now?"

"I just wanna ask you not to write your young man during business hours. Letters are apt to get mixed. Herb and Blurb report we have sent 'em a shipment of love and kisses instead of the axle grease they ordered.—Exchange.



Fond Mother—The baby looks like his father, don't you think?

Neighbor—Yes, but I wouldn't let that worry me as long as he is healthy.

OH, YES!

When a diplomat says yes
He means perhaps,
If he says perhaps
He means no,
If he says no
He is not a diplomat.

When a lady says no
She means perhaps,
When she says perhaps
She means yes,
And when she says yes
She is not a lady.

❖ ❖ ❖

HOW A WEBSTER GOLFER
FEELS!

It is easy to smile
When you putt in one
A trick that is sometimes seen:
But the girl worth while
Is the one who can smile
When she takes four putts on the
green.—The Wake.

❖ ❖ ❖

WHAT OFTEN HAPPENS ON A
MANCHESTER CAR

'Twas not an act of chivalry
Nor yet the fear of scorn:
He offered her his street car seat
To keep her off his corn.

—The Wake.



No, Johnny, that's not the bearded lady
you saw in the circus. It's only a Webster girl
letting her hair grow.

❖ ❖ ❖

One Dad—Your son graduated last year?
Other Dad—Yep.
One Dad—What's he working at now?
Other Dad—Oh, at rare intervals.—Exchange.

❖ ❖ ❖

Doing a thing different because others do it the other way may be interesting, but it is also darned foolish.

❖ ❖ ❖

Son—Dad, what is college?
Dad—I would say it is a four year's loaf.

The AURETANUM



Find your favorite, girls!

The LAURETANUM

Baby **Jigger** the Dean **CHEWINGGUM** Where Are the Women Now?

"Get Together Boys!" **THE BIG GAME** "After every meal!"

What comfort! **A Giant** SO THIS IS COLLEGE! **Hollywood** No Kickers Wanted

Success **Men, Attention!** Bo Zo. Old Guard 'twas late "It ain't right,"

COLLEGE CREDIT I never knew it to fail. **NON-STOP FLIGHT** **To Meet In Gym**

CollegeHumor **WHOOPIE!** A Maiden's Hope. College Boy: **GO AHEAD** "Are you serious?" St. Louis U. Station

MODERN LONG FELLOW **The Story** free **CHOOSE YOUR WIFE** "Same old story." **College Man Wins**

WHEN THE KNOCKOUT COMES **REMEMBER—** **ROMANCE** **HOW TO DO IT** **Eveready Hour** **VALUES** "Where are you going?" **Education**

A FOOTBALL PLAYER'S LOVE **WHAT HAPPENED** **FAIR ONE** **DATE** **no more** **WINS**

CHICKEN "The Little French Girl," **WHAT HAPPENED** **FAIR ONE** **DATE** **no more** **WINS**

"So How I," **A FROSH UPRISING** **WHAT HAPPENED** **FAIR ONE** **DATE** **no more** **WINS**

Next to Nothing **WHAT HAPPENED** **FAIR ONE** **DATE** **no more** **WINS**

Love is Blind. It's Thankful Time Again **Next to Nothing** **WHAT HAPPENED** **FAIR ONE** **DATE** **no more** **WINS**

"Sport," **CARNIVAL** **MODERN VERSION** **1928** **DATE** **no more** **WINS**

PROM **DATE** **no more** **WINS**

What beauty! "Is this a blind date?"



Reminiscences of the 1928 Prom

Freshman (looking at statue of Venus de Milo) I'm not going to stand near that statue. I'm liable to be blamed for breaking her arm.

⊘ ⊘ ⊘

Tubby—Why did you break your engagement with that school teacher?

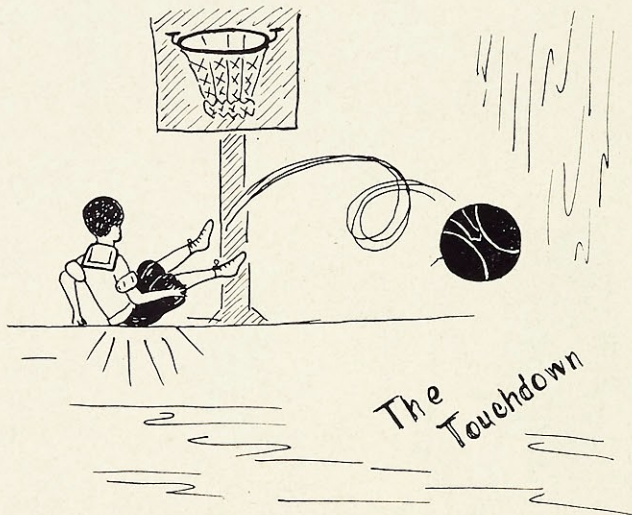
Chubby—Because she wanted a written excuse from my mother for any night I didn't call on her.

⊘ ⊘ ⊘

Mr. Winle—Jim if you had a little more spunk you would stand better in your classes. Now do you know what spunk is?

Jim—Yes, sir, it's the past participle of spank.

⊘ ⊘ ⊘



Jake—What kind of a watch have you got?

Bill—I have a wonder watch.

J a k e — W o n d e r Watch! Never heard of that before.

Bill—Well you see it's this way, every time I look at it I wonder what time it is.

⊘ ⊘ ⊘

Father—Isobel, who was in the parlor with you last night?

Isobel—Why, only —only Marge, father.

Father—Well, when you see Marge tell her she left her pipe on the piano.—Exchange.

⊘ ⊘ ⊘

Joe—It doesn't pay to be crooked.

Lee—For instance?

Joe—Well, just look at what happened to all the corkscrews and hairpins!

⊘ ⊘ ⊘

EXPLAINED

"Oh, what a strange-looking cow!" exclaimed a sweet young thing from Detroit. "But why hasn't it any horns?"

"Well, you see," explained the farmer, "some cows is born without horns and never has any, and others shed theirs, and some we de-horn, and some breeds ain't supposed to have horns at all. There's lots of reasons why some cows ain't got horns, but the big reason why THAT cow ain't got horns is because she ain't a cow—she's a horse."—Exchange.

⊘ ⊘ ⊘

Dean of Women—Young lady, this is the third time that I've caught you.

Fair Co-ed—Don't be partial to me; the other girls might not like it.

The LAURETANUM

A SENIOR'S LAMENT

Roses are red
Violets are blue
It's the end of college
Now—what to do?

❖ ❖ ❖

SOCIAL SCIENCE PROBLEM—

Problem—Uninvited guests at college dances.

Solution—(given by Social Science student) Insist that birth certificate and passport photographs be shown along with bids, as the latter can be faked.

❖ ❖ ❖

Professor—Can you give me a more elegant rendering of the sentence, "The Sap rises".

Student—The boob gets out of bed.

❖ ❖ ❖

Never try to talk to any one. Try to talk with them instead. You'll find a great difference.

❖ ❖ ❖

QUALIFYING

"Sir, I have courted your daughter for six years."

"Well, what do you want?"

"To marry her, of course."

"Good, I thought you wanted a pension or something."—Exchange.

❖ ❖ ❖

BUT ALL IN VAIN

Wife—I hate the sight of that friend of yours. When I was talking to him the other day he yawned at least a dozen times.

Hubby—Are you sure he was yawning, dear? He may have been trying to say something.

❖ ❖ ❖

WHY TRAFFIC COPS ARE ALWAYS SWEET

A traffic policeman at a busy crossing saw an old lady beckon to him one afternoon. He held up a dozen motor cars, a dray and two cabs to get to her side.

"What is it, ma'am? he said rather impatiently.

The old lady smiled and put her hand on his arm.

"I want to tell you that your number is the number of my favorite hymn."

—Exchange.



The LAURETANUM

A clever way has he
His evenings to decide—
A dance, if heads; a show, if tails,
His books, if on the side.

⊘ ⊘ ⊘

The scientists of 3A have finally discovered, after long years of study, the correct way to tell a person's age.

If he says:

"Da-da" 6 mos. to 1 yr.
"Pa-pa" 1 yr. to 5 yrs.
"Dad" 6 yrs. to 12 yrs.
"Old Man" 15 yrs to 21 yrs.
"Father" he is over 25 yrs.

If he says anything else, he is 70 or over.

If he says nothing, he is dead.

⊘ ⊘ ⊘

The tramp paused outside the house—

"Clear out!" Shouted the lady of the house "I ain't got no wood to chop. There ain't nothin' you could do around here."

"But, Madam, there is." Retorted the wayfarer with dignity. "I could give you a few lessons in grammar."

⊘ ⊘ ⊘

First year—Matriculate
Second year—Cultivate
Third year—Scintillate
Fourth year—Graduate.—Exchange.

⊘ ⊘ ⊘

What do they do when a ship comes in late?
They dock it.

⊘ ⊘ ⊘

Laura—Got a nickel so I can phone.
Pearl—Will a "coke" bottle do?

⊘ ⊘ ⊘

Ellen Hogan calling Juanita Abell to phone—

Ellen: "Ann, do you know anything about Juanita?"

Ann: "Yes, I think she is a very nice girl."

⊘ ⊘ ⊘

Susanne—Do you know how snow flakes are formed?

Laura—No, how?

Susanne—On the way down.

To the Student Body:

The firms whose names appear on the following pages should receive your cooperation and patronage. Their interest in Webster has been concretely shown. Let your appreciation be shown in the same manner.

LAURETANUM Staff '28.

The
LAURETANUM

*We, in unison with other Webster
Merchants are proud of*

WEBSTER COLLEGE

and appreciate your patronage

WE DELIVER EVERYTHING WHEN
YOU WANT IT—AS YOU WANT IT.
TRY THIS DRUG STORE FIRST.



Webster 16 or 49

OLD ORCHARD PHARMACY

ALBERT C. LISHEN, Manager

The Store Beautiful

Fischer Optical Co.

Kodaks and Photographers'
Supplies

Main Store:
915 Locust Street
Garfield 1307

Branch Store:
Metropolitan Building
510 North Grand Blvd.
Grand Blvd. and Olive Street
Jefferson 5736

Cover by

BECKTOLD

The name Becktold means to annual covers what Sterling means to silver—the stamp of absolute quality.

Wherever it is used, a Becktold never fails to lend an atmosphere of beauty and distinction. Its strength and durability will preserve your book for years to come.

It is a mark of wisdom and foresight on the part of the staff in charge that the 1928 Lauretanum has a Becktold Cover.

PEOPLE READ ADS

“Do you find that advertising brings quick results?”

“I should say it does. Why only the other day we advertised for a night-watchman, and that night the safe was robbed.”—Exchange.

⊘ ⊘ ⊘

C. Brown: “Do you think that mother will mind if I buy a hat in St. Louis.

M. V.: “Of course! She'll fear that you might get the rubber too tight.”

⊘ ⊘ ⊘

Old Orchard's become the byword
For students of Webster, I've heard
A habit it is
For a coc' or “fizz”
The food that they eat 'tis absurd!

The
LAURETANUM

Office Phone, Central 1070

Residence, Forest 7040



HENRY P. HESS

Architect

1001-2 Ambassador Building

St. Louis, Mo.



Architect for Loretto Hall

19

20



Choose Your
Piano As The
Artists Do

For its enduring purity and resonance, for its perfect concord of tone and action, the

Baldwin

is the choice of exacting musician the world over, on the concert stage and in the home. In any Baldwin you will find a new revelation of your musical dreams.

The Baldwin Piano Co.
1111 Olive Street

WEST END LAUNDRY



"Complete Laundry Service"



DElmar 4720 *The LAUNDRY /
does it best*



ODE TO WEBSTER'S GYM

Oh! "Idle Hour"
You lack a tower,
But then what is the "diff"
You furnish fun
But how we run
To ease that awful "stiff".



J. H. GILLESPIE

AL. P. DALY

"I wouldn't drink out of that cup," interposed little Johnny to the well-dressed young man who had been introduced to his sister the night before. "That's Bessie's cup and she's very particular who drinks out of it."

"Ah," returned the young man, draining the cup. "I feel honored to drink out of Bessie's cup. She's your sister, is she not?"

"Not much, Bessie is my dog."—Exchange.

⋆ ⋆ ⋆

Two men were seated in a crowded trolley car. One, noticing that the other closed his eyes, asked:

"Bill, are you sick?"

"I'm all right," answered Bill, "but I hate to see ladies standing."

—Exchange.

⋆ ⋆ ⋆

Student—The garbage man is here, sir.

Professor (from deep thought)—Tell him we don't want any today.

—Orange & Black.

Lindell 5766

Lindell 4128

1 1 1

ELLIOT & BARRY
ENGINEERING CO.

Heating Engineers and
Contractors

4060 West Pine Boulevard

St. Louis, Mo.

The
AURETANUM

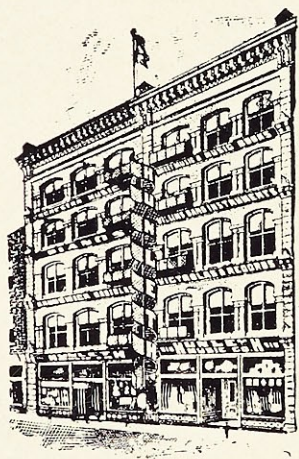
In College Circles, at Parties and
Wherever Fashionable Women
Gather "the Shoes You Admire"
are

Vogue Short Vamps

For the Style Student
VOGUE FOOTWEAR
are in a class by themselves

Vogue

615 Locust Street
ST. LOUIS, MO.



HUNLETH
MUSIC CO.
514-516 LOCUST ST.

MOST COMPLETE MUSIC HOUSE IN ST. LOUIS.

JOBBER - DEALERS

HIGHEST GRADE

MUSICAL VICTROLAS

INSTRUMENTS RECORDS

SHEET MUSIC PIANOS
FOREIGN & DOMESTIC

Stop and Shop in Maplewood

AT

Harper's Pharmacy

On Sutton Avenue
Opposite the Loop

Your Money Buys More at

HARPER'S

Martha Washington Candies, 70c lb.

To Webster Groves'
Discriminating Women

May we not have the pleasure
of serving you? At Sassin's
you will find an exclusive
shop . . . filled with beautiful
things: Lingeries, Linens and
Hosiery. At remarkably
reasonable prices.

SASSIN

122 West Lockwood

19

20

Compliments

of

OLD ORCHARD
STATE BANK

Old Orchard & Big Bend Roads
Webster Groves, Mo.

Everything in Pets

**MISSOURI PET FARMS
Inc.**

*Breeders, Growers and Producers
of the Complete Line of Pets*

Satisfaction Guaranteed

Kirkwood, Mo.

Compliments of

FRESHMAN CLASS

Cabany 5824

CHRISTIAN BROTHERS HIGH SCHOOL

Clayton Road and University Lane

Statue of the Sacred Heart With Vigil Lights . . .

We have had wonderful success in the marketing of a Statue of the Sacred Heart with a receptacle at the base to take a Vigil Light Glass. We are, therefore, offering the following combination to Catholic families: ONE STATUE, 13 inches high; one RUBY GLASS, and one dozen 15-hour VIGIL LIGHTS. This will be sent postpaid within a distance of three zones on receipt of \$3.00.

WILL & BAUMER CANDLE CO., Inc.

405 N. Main Street, St. Louis, Mo.

Shoes of the Moment

STAGE SHOES STREET SHOES

Vanity Boot Shop

805 Locust Street

St. Louis, Mo.

Forest Park Hotel

West Pine Blvd. and Euclid Ave.

St. Louis

J. E. ASTON - - Manager

Compliments of

JOE GARAVELLI

De Baliviere and De Giverville

"Dit" Did It

Quality Service

DITENHAEFER
PRINTING CO.

Garfield 8449 1407 Pine St.

Teacher—If there are any dumbbells in this room, please stand up.
(Pause, then a boy stood up.)

Teacher—What! Do you consider yourself a dumbbell?

Johnny—Well, not exactly; but I hate to see you standing there alone.

—Exchange.



She—Time separates the best of friends.

He—Quite true. Fourteen years ago we were both eighteen. Now you are twenty-three and I'm thirty-two.—Exchange.



He—My roommate is so dumb he thinks canary birds come from the Canary Islands.

She—Well, don't they?

He—Darned if I know.—Wissahickon.

CENTRAL 8453
CENTRAL 8452

J. D. HEALY, Pres.
Residence, 3118 Allen Ave.

Henry Hiemenz Realty Company

REALTORS

SALES—LOANS—RENTALS—INSURANCE
AND RENT COLLECTIONS

614 Chestnut Street

St. Louis, Mo.

Theatrical Costumers and Wigmakers

Garfield 1402

St. Louis Costume Co.

Frank J. Herbers

507 North Broadway

St. Louis, Mo.

FULL BACK

Brown: "How's the boy doing at college?"

Jones: "Fine. He's a half-back this year."

Brown: "Oh, I mean in his studies."

Jones: "Oh, he's away back."—Exchange.



THE THORN WITH THE ROSE

"So you want to become my son-in-law?"

"Indeed no, sir; I do not. But I don't see how I can well avoid it, seeing that I'm marrying your daughter."—Exchange.



SHE GOT UP

Would you mind just getting up for a minute, please, ma'am?"

"And why, pray?" she asked with dignity.

"So's I can put this 'Wet Paint' notice on the seat."—Exchange.

MARIE MAC \$5.00 HAT SHOP

317 NORTH TENTH STREET (Opposite Vandervoorts)

Smart Authentic Styles Daily from New York—No Hat Above \$5.00

Under Personal Management of MISS MARIE MAC, Formerly of Grand Leader Millinery Dept.

ZELLER BROS. CATERING CO.

4701-3 McPHERSON AVE.

ST. LOUIS

Ice Cream and Fruit Ices of Superior Quality
Supplies for Parties, Etc.

We Want

YOUR TRADE

If Good, Reliable Goods, Lowest possible Prices, Fair and Square Dealing, Polite Attention will get it, we can count on you for a customer.

A. BRANDENBERG

638 Big Bend Road
Webster Groves, Missouri

Telephones

Central 2116

Central 2117

W. Schiller & Co.

Wholesale and Retail Dealers in
PHOTO SUPPLIES

Kodak Finishing and Enlarging
6 South Broadway St. Louis, Mo.

Carballo—What's all the excitement about?

Rebullida—Oh, Puno, who is absent-minded dissected his finger and scratched his head with a tape worm.—Exchange.

❖ ❖ ❖

Heard at Sunday dinner during an epidemic of the mumps—

Marta (directing her gaze to a dish of pickles)—

“Pass the mump testers, please.”

❖ ❖ ❖

The following incident took place at breakfast on the morning of April first, which also happened to be Palm Sunday:

A table of Seniors, wishing to have a little fun, sang in chorus, “Happy feast day, Susanne!”

Upon hearing this Bill exclaimed in an astonished voice,

“Oh, I didn't know Susanne's name was Palm.”

613 E. Lockwood Webster Groves, Mo.
Phone, Webster 1335

**FLORENCE IRVIN'S
HAIR SHOP**

Eugene Permanent Waving
Hair Cutting, Marcel Waving,
Shampooing, Manicuring
All Kinds of Hair Work

Parkview 1600-1-2-3

**DORR & ZELLER
CATERING CO.**

Weddings, Receptions and Teas
Supplied on Short Notice

DeBaliviere and Watermann Aves.
Saint Louis

Atwater Kent Radios
Exide Storage Batteries

N. P. Winters Electric Co.

Wiring—Fixtures—Repairs

644 and 652 Big Bend Road
Webster Groves, Mo.

Books on Every Subject

Rental Library of New Fiction

**Doubleday Doran
BOOK SHOP**

Webster Groves Branch
14 N. Gore Ave. 8th and Olive

THIS SHOULD BRING A SMILE TO OUR CATECHISTS—

The diocesan inspector was visiting the parochial school.

"If all the good people were white," he said, "and all the bad people were black, what color would you be?"

Some of the children answered "White." Some bravely answered "Black." But Dorothy spoke up: "Please, Father, a little bit streaky."—Exchange.

⊘ ⊘ ⊘

Abie—Fadder, you told me you would give me a dollar every time I got *E* in class.

Fadder, I made two last week.

Fadder—Vell, here's two dollars. Now quit studying so much. It's bad for you.—Exchange.

⊘ ⊘ ⊘

AND SAME TALE

Teacher: "Come here, Henry. This essay of yours on 'Our Dog' is word for word the same as your brother's."

Henry: "Sure. It's the same dog."—Exchange.

St. Louis Bell Foundry

Herman Stuckstede

Henry Stuckstede

STUCKSTEDE & BRO.

Manufacturers of BELLS

2735 and 2737 Lyon Street

Prospect 0793

St. Louis, Mo.

ICE SKATING

WINTER GARDEN

DeBaliviere Avenue—Near Delmar

(5700 West)

SESSIONS

Daily — Afternoons at 2:30. Evenings at 8:00

Saturday, Sunday and Holiday Mornings at 10:00

GOOD MUSIC

INSTRUCTORS

Season: November to April

FLIPPANT OLD BOY

The old gentleman's wife was getting into a carriage, receiving no assistance in the process from her husband.

"You are not so gallant, John, as when you were a boy," she exclaimed in gentle rebuke.

"I apologize, Sarah, my dear," he replied, hastening to assist her. "But you are not nearly so buoyant as when you were a gal."—Exchange.

❖ ❖ ❖

RUN, NANKY!

"Mr. Editor, we are starting a movement to establish a Home for Disabled Poets."

"Excellent. There's half a dozen poets in this town that I'll disable as soon as you're ready to take 'em."—Exchange.

❖ ❖ ❖

DOC SPECIALIZES

Old friend: "I understand that your practice is growing bigger."

Young Doctor: "It is. My patient gained two pounds during the last month."—Exchange.

The
AURETANUM

Design

Build

Finance



WELLSTON MORTGAGE CO.

John A. Quinn, Pres.



CAbanne 6180

6307 Easton Ave.

19

20

One Hundred Forty-five

From a Friend

Professor—"What does *nostra* agree with?"
Brinker—"Laus."
Professor—"Can you find it?"
Puer (with a questioning look on his countenance and scratching his head)
—"No, I can't find it."—Exchange.

⋆ ⋆ ⋆
Ruth—"Someone told me you made thirty-five in Greek."
Lucille—"Not quite as bad as that; I made thirty-two."—Exchange.

⋆ ⋆ ⋆
David—"Do you know that Prof. is older than he looks?"
Charley—"No, why?"
David—"Well, he says he taught Caesar and Cicero for four years."
—Exchange.

⋆ ⋆ ⋆
French Prof.—Has anyone here ever seen a French play?
Chester—I have.
Prof.—And what did you enjoy in it the most?
Chet.—Well, I think it was the peasants singing the Mayonnaise.
—Exchange.

Compliments
of
Empress Theatre
National Players

Garfield 4662
Garfield 9058

McAnulty-Klein Co.
Materials and Equipment
Wainwright Building
St. Louis, Mo.



Away with Thirst!

Here are two drinks with a cool welcome for dry and thirsty throats

One—Budweiser—a real brew with a thick, creamy head, full body and the rich, fragrant flavor of Bohemian hops and choice northern barley.

The other, Busch Extra Dry — a smooth, delicious blend of *genuine* Jamaica ginger and *real* fruit juices aged in wood for three solid months.

ANHEUSER-BUSCH
St. Louis

Compliments
of
SIEVERS
Commercial Photographers

1704 CHESTNUT STREET
St. Louis, Mo.

*America's Most Successful Shoe
for Children*



Made in St. Louis by
McElroy-Sloan Shoe Co.

MERCHANTS' ASSOCIATION
OF WEBSTER GROVES, MO.

PATRONIZE HOME MERCHANTS

Geo. C. Benne Groceries and Meats	Holekamp Lumber Co. Lumber, Etc.	Reichardt Motor Co. Auto Service, Tires and Repairs
George Blanner Electrical Contractor	P. O. Howe Hardware Co. Hardware, Paints, Etc.	Riesmeyer-Yates Motor Co. Automobiles
Bopp Bros. Auto Garage and Auto Service	W. F. Hudson Groceries and Meats	Henry Schulz Feed Co. Feed and Moving
A. Brandenburg Groceries and Meats	Theo. Johnson Dry Goods and Shoes	Southwestern Bell Telephone Company
W. J. Brennan Grocery Co. Groceries and Meats	Kotovsky Electric Co. Electrical Contractors	Fred P. Straub Hardware and Paints
E. Brockman Blacksmith	Langsam's Dry Goods Store Dry Goods and Shoes	W. A. Straub & Co. Groceries and Meats
L. Christoffersen Coal and Building Material	August M. Lemberger Job Printer	Trembley-Wilson R. E. Co. Real Estate
Clamp-Prehn Plumbing Co. Plumbers	Al Levy Dry Goods and Shoes	Union Fuel Co. Coal and Ice
Cannon Floral Co. Florist	W. D. Lindhorst Groceries and Meats	Webster Groves Drug Co. Druggist
First National Bank In Webster Groves	Lockwood Grocery Co. Groceries, Meats, Etc.	Webster Groves Trust Co. Bankers
Paul Gableman Plumber	McConnell Mercantile Co. Groceries and Meats	Webster Ptg. & Stat. Co. Newspaper and Printing
Glencoe Lime & Cement Co. Building Material	Mueller Drug Co. Druggists	E. W. Wicks News and Cigars
Gorelock Hardware Co. Hardware	Old Orchard Pharmacy Druggist	Wiles-Chipman Lumber Co. Lumber, Etc.
W. H. C. Hackman Groceries and Meats	Parker Undertaking Co. Undertakers, Auto Garage and Auto Service	N. P. Winters Electrical Contractor and Supplies
Harter Music Shop Musical Instruments, Etc.	Paul-Mac Hardware Co. Hardware, Paints, etc.	A. M. Wolverson Groceries and Meats
		Yeager Bros. Groceries and Meats

Mrs. Peck—"Mamie says she's goin' to take up Greek and Roman mythology."

Mr. Peck—"Tell her to let them fool games alone an' attend to her studies."
—Exchange.

⊘ ⊘ ⊘

The following from two Juniors deep in the throes of first year Greek is delightful for its musty antiquity, but how could they know?

"Why is a Greek fable like a garret?"

"Shoot! I'll sign anything but a search warrant."

"Because it is an Attic story."—Exchange.

⊘ ⊘ ⊘

Teacher of Christian Doctrine—"What is a niche in a church?"

Boy—"An itch in the church is the same as any other itch, but one can't scratch it so easy."—Exchange.

⊘ ⊘ ⊘

SCENE—BIOLOGY LAB.

Professor—"What small steed is used more frequently than the Shetland?"

Fabie (*sotto voce*)—"A Cicero Pony."—Exchange.

⊘ ⊘ ⊘

An English schoolboy rendered "Pax in bello," as "Freedom from indigestion."

Freund's Famous

Olde Tyme Rye and
Reputation Bread

Is Used Here Exclusively

Telephone, Webster 2696

738 E. Big Bend Blvd.
Webster Groves, Mo.

THE BOOK SHELF
Circulating Library

The Newest and Most Popular
Fiction and Non-Fiction for Rent

Hours: 10 a. m. to 5 p. m. every day except
Wednesday and Sunday

Say It With Flowers

Designing
Cut Flowers
Pot Plants

CERNY FLORAL COMPANY

Store
122 E. Lockwood Avenue
WEBSTER GROVES, MO.
Webster 2950

Greenhouses
430 So. Van Buren Ave.
KIRKWOOD, MISSOURI
Kirkwood 916

Residence, Kirkwood 337-W

Prof—"How was Jonah punished?"
Stack—"He was whaled."
Prof—"How did he feel when the whale swallowed him?"
Stack—"Considerably down in the mouth."—Exchange.

⊘ ⊘ ⊘

PLUSQUAM

Coury—"Is your English teacher very critical of your work?"
Slocum—"Critical? Why, honest, man, he's simply dia-critical."
—Exchange.

⊘ ⊘ ⊘

Prof—"When did Caesar conquer the greatest number?"
Stude—"At the exams."—Exchange.

⊘ ⊘ ⊘

Ashes to ashes, dust to dust
If Greek don't kill us, Latin must—Exchange.

⊘ ⊘ ⊘

Crawford (in Latin class): Caesar pitched his camp across the river.
Murphy: Gee, what a heave!—Exchange

⊘ ⊘ ⊘

Soph—"Do you read Cicero's letters in class?"
Frosh—"What do you think I am? I don't read other people's letters."

Phone, Jefferson 8184

Meramec Material & Supply
Company

For Building Materials

General Office, Polar Wave Building
Grand and Olive
St. Louis, Mo.

Service Throughout City and County

When in Need of

*Art Supplies and
Drawing Materials*

Call on Us

Our Stock is Complete and Our Prices
Will Please You

BADER'S

Phones, Garfield 2870-2871

1110 Locust Street . . St. Louis, Mo.

B. T. KEARNS
President

C. P. SCHAUM
Vice-President

G. W. BURLY
Secy. & Treas.

Cascade Wet Wash Laundry Co.

VICTOR AND OHIO

Wet Wash 6c per lb.
Minimum bundle \$1.20

Wet Wash, flat work ironed, 8c per lb.
Minimum bundle \$1.60

Victor 4708-09-10

St. Louis, Mo.

History Professor—"Who was Atlas?"

Gleason—"A historian renowned for his map." —Exchange.

⋆ ⋆ ⋆

If a lover of books is called a bookworm, can a lover of mathematics be termed an angleworm?

⋆ ⋆ ⋆

Mahoney—"I learned today that the ancient Romans had automobiles."

Reilly—"How's that?"

Mahoney—"I read where Caesar came to a river and Forded across."

—Exchange.

⋆ ⋆ ⋆

Mallon—"Menelaus must have worked in a Greek restaurant."

Boslet—"How do you get that way?"

Mallon—"Because it says in Vergil that he waited beyond the walls of Troy for ten years." —Exchange.

⋆ ⋆ ⋆

Corcoran—"What book are you reading?"

Mayan—"Last Days of Pompeii."

Plummer (butting in as usual)—"What did he die of?"

Mayan—"Oh, I didn't get that far yet, but I think some kind of an eruption." —Exchange.

⋆ ⋆ ⋆

He—"Have you seen the new Greek dance?"

She—"No; what is it?"

He—"The Aristoddle."

WHEN THE BEST IS WANTED

Ask for
De Coursey's
WHITE
ROSE
BUTTER



Churned from
Carefully
Selected Cream
De Coursey
Creamery Co.
S. W. Heckemeyer
Manager

FOR SALE

*Large or Small Tracts of
Land
in Butler County*

John C. Corrigan & Son
Poplar Bluff, Mo.
Box 277

Special Furniture

Artistic Lamps

Exclusive Wall Papers
THAT ARE DIFFERENT

Interior Painting and Decorating

P. Loire Wall Paper Co.
3748 Washington Blvd., Cor. Spring

Mirrors

Scenic Panels

STUDENT'S NIGHT PRAYER

Now I lay me down to rest,
Before I take tomorrow's test;
If I should die before I wake—
Thank heaven I'll have no test to take.—Exchange.

• • •

SUITED HIM

Mrs. Timkins was taking her son to school for the first time, and after impressing the schoolmaster with the necessity of giving a thoroughly good education, finished up by saying: "Be sure he learns Latin."

"But my dear madam," said the schoolmaster, "Latin is a dead language."

"All right," said Mrs. Timkins, "he'll want it. He's going to be an undertaker."—Exchange.

POPTIMISTIC

Small son (reading advertisement) — "Pop, what does this automobile guarantee mean?"

Pop— "It means that whatever goes wrong with the car, it's the owner's fault."—Exchange.

ROOSEVELT

St. Louis' Newest Hotel
—and the Finest

DELMAR BLVD. AT EUCLID

□ □ □

Quiet and Comfort
at Reasonable Prices

An Ideal Place for Your Parties
and Entertainments

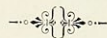
Irresistible Food

FOREST 4100

□ □ □

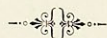
The Roosevelt

Compliments of



G. N. Broeker Cigar Co.

2100-2 N. Ninth Street



St. Louis, Missouri

A careful contractor, bidding in competition with a bunch of fly-by-nighters, rushed into an architect's office to explain that he had forgotten to send in all his bid.

"The bid I sent in didn't include the brick work, plastering and cement work," he explained, excitedly.

"Oh, that's all right," said the architect, "you weren't low anyway!"

—Kreolite News.

⋆ ⋆ ⋆

Betty was taking her first ocean voyage, and for the first three days the sea was smooth as glass. On the fourth day out a squall came up and the good ship bounced around like a broncho.

"Mother," finally asked Betty, "what's the matter? Are we on a detour?"

—Kreolite News.

⋆ ⋆ ⋆

GUILTY?

Teacher—"Who signed the Magna Charta?"

Pert Youngster—"Please, ma'am, it wasn't me."

Teacher—"Oh, take your seat?"

Skeptical Member of the School Board—"Here, call that boy back. I don't like his manner. I believe he did do it."—Exchange.

Coughing at Night?

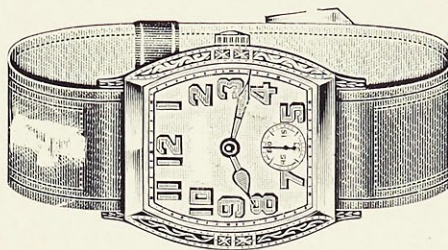
DON'T be kept awake and tormented by coughing. Test this amazing, pleasant syrup, GOLD MEDAL Pine Tar Honey, and see how quickly relief comes. "Tightness" goes, phlegm loosens, breathing becomes easy and tickling stops. Besides the healing, soothing Menthol, Eucalyptus Oils and Pine Tar Honey compounds, this wonderful remedy contains Beechwood Creosote, recognized by medical science as one of the greatest aids in treating the more serious lung troubles. Get immediate lasting relief. Ask your druggist for

GOLD MEDAL
PINE TAR HONEY

Price 50c

Robbins Nest

324 Arcade Building



Girls' Sport Model

15-Jewel Two-Tone White and
Green Curved Back Case
With Mesh Strap

Accurate and Very Attractive

COMPLETE

\$17.50

Why are you wearing that poison ivy?
Because it's mother-in-law's day.

⋆ ⋆ ⋆

Sam—"Conscience? What is that?"

Henry—"Why, it tells you not to do something that's wrong."

Sam—"Yes, that came to me today."

Henry—"Oh, it did."

Sam—"Yes, I was going to steal a four dollar pair of shoes and it told me not to, so I reached up and took a ten dollar pair."—Station W. L. S.

⋆ ⋆ ⋆

Another heard over the radio:

Why does Gene Tunney wish to fight Jack Dempsey in 1928?

'Cause he doesn't choose to run.

⋆ ⋆ ⋆

Sam—"What would you think if you put on your pants and found a roll of five dollar bills in the pocket?"

Henry—"I wouldn't think; I'd know that I had someone else's on."

⋆ ⋆ ⋆

Radio whiskey—one drink and you go out and broadcast.



*Winegardner & Housewright's
Little Plumber*

A sanitary residence is one of the greatest comforts that can find its way into any man's life. If your plumbing facilities are not all that they should be you should no longer delay calling upon us and asking us to furnish you an estimate of what the work and the fixtures will cost you.

Webster 2123

Webster 2394

Winegardner & Housewright
Plumbing and Heating Contractors
655 E. Big Bend Rd. Webster Groves, Mo.

Compliments of
Weiler Bros.

A happy home is one where father hands out generously and gives in without argument.—Kreolite News.

⋆ ⋆ ⋆

Sign on Highway Hot-dog Stand:

We sell near beer here because there is no beer near here.—Kreolite News.

⋆ ⋆ ⋆

The Head—"And furthermore, a man who cannot express himself so as to be understood is an idiot! Now do you understand me?"

The Boy—"No, sir."—Kreolite News.

⋆ ⋆ ⋆

Professor—"Mr. Trent, name some of the heavenly bodies."

Trent—"Blondes and Brunettes, sir."—Kreolite News.

⋆ ⋆ ⋆

The average married man wouldn't object to his wife wearing her skirts a little shorter if she'd only wear them a little longer.—Judge.

⋆ ⋆ ⋆

There are two times to address a golf ball; before and after swinging.

—Kreolite News.

The Lauretanium - -

is a sample of the workmanship that is displayed in every Wiese-made book.

¶ Books from the Wiese Press are good books to look at—inside and out. They are the goal that, throughout the year, you have been striving for.

¶ They are a popular success among the Faculty and Student Body.

¶ Their reproduction of halftones and color plates are true and clean.

¶ They are achievement.

*It is worth while to talk to a Wiese Representative
before signing your printing contract*



WIESE PRINTING COMPANY

PINE AT TWENTY-SECOND STREET

SAINT LOUIS

Central 3669

Central 3670

Compliments of
SENIOR CLASS

Cabany 5019

Cabany 6590

WE DELIVER

NELSON'S

Ice Cream of Finer Quality . . . Delicious Bakery Goods and Candies
440 DeBALIVIERE AVENUE

Central 5450

CASPER STEHLE BEDDING CO.

Manufacturers of

Mattresses, Pillows and Bedding

19th and Morgan Sts

H. C. Smith, Pres. and Treas.

St. Louis, Mo.



WEBSTER STORE
Webster 2635

KIRKWOOD STORE
Kirkwood 348

OLD ORCHARD
Webster 1323



Compliments of
Sophomore Class



The
LAURETANUM

Again . . .

the Portraits for the

LAURETANUM

Were Made by

SID WHITING STUDIOS

GRAND AT WASHINGTON

Jefferson 8666

OLIVE AT PENDLETON

Jefferson 7294



Sid Whiting

Burrel Rogers

19

20

One Hundred Fifty-seven

The
AURETANUM

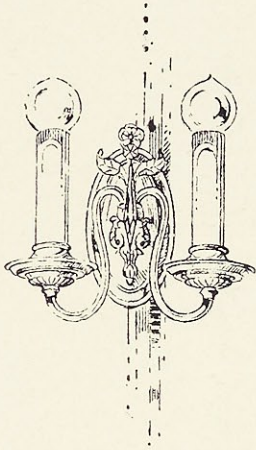
GROSS CHANDELIER CO.

Salesroom, 1107 Locust Street

Factory, 2036 Morgan Street

Designers and Manufacturers of
LIGHTING EQUIPMENT FOR CHURCHES, SCHOOLS, HOSPITALS and
INSTITUTIONAL BUILDINGS

Communicate with
T. J. CRADEN



PARTIAL LIST OF INSTALLATIONS

Convent of the Good Shepherd New Chapel, St. Louis, Mo.;
Knights of Columbus Building, East St. Louis, Ill.; Western
Catholic Union Building, Quincy, Ill.; Font Bonne College,
St. Louis, Mo.; Hotel Dieu, New Orleans, La.; Kenrick Sem-
inary, Webster Groves, Mo.; St. Stanislaus Seminary, Florissant,
Mo.; St. Louis University High School; Home of the Aged,
Kansas City, Mo.; St. Joseph Seminary, Hinsdale, Ill.; St. Vin-
cent's Nurses' Home, Indianapolis, Ind.; St. Joseph's Academy
Chapel, Sisters of St. Joseph, St. Louis, Mo.; St. Vincent's
Infant Asylum Chapel, Chicago, Ill.; St. Louis University Gym-
nasium, St. Louis, Mo.; Sacred Heart Cathedral, Duluth, Minn.;
St. Scholastica College, Duluth, Minn.; St. Vincent's Hospital,
Los Angeles, Cal.; Chapel St. Louis House of Retreats, Mehl-
ville, Mo.; Loretto College, Webster Groves, Mo.; Sisters of
Mercy Novitiate and Chapel, Webster Groves, Mo.; Holy
Trinity Church, New Orleans, La.

Phones CEntral 1060 to 1063, Inclusive

WOODS PHARMACY COMPANY

THE REXALL STORE

WE DELIVER

Phones, WEBster 2733-3481

BIG BEND AND OLD ORCHARD

LORETTO ACADEMY

3407 Lafayette Ave., St. Louis, Mo.

DAY SCHOOL FOR GIRLS

Accredited by the North Central Association, the Catholic University of
America, and the University of Missouri

⋆ ⋆ ⋆

Father Cahill: "Now does any one
know what the Israelites were looking
for when they went out into the wil-
derness?"

Thelma: "Yes. I know. Parking
space."—The Web.

⋆ ⋆ ⋆

COLLECTING FOR CHARGED MISSION FOOD

A. Carr: "Laura, you owe the
Missions a dime." (Laura immedi-
ately gives Anne the dime.)

Anna: Gee, Laura, you are a cheer-
ful giver."

Laura: "No, Anne, just a good
actor."—The Web.



Distinctive ideas in annuals are a prime factor in a successful book~~~ In all our annuals there is found distinction plus the finest quality of workmanship~~~

CENTRAL ENGRAVING COMPANY
SAINT LOUIS

