



*The Lauretanum  
of nineteen forty-five*

*The  
Lauretanum  
of*

*Nineteen Hundred  
and Forty-Five*



*“There is a college called Webster”*

# *Lauretanum Staff*

*Editor*—MARCELLA KOMMER

*Assistant Editor*—MARIE GILLESPIE

*Associate Editor*—MARY FITZGERALD

*Associate Editor*—JANE FITZSIMONS

*Business Manager*—TERRY WAND

*Circulation Manager*—MARGIE O'BRIEN

*Moderator*—SISTER MARY FLAGET

*Photography*

Edwyn Studios

Mr. Glenn Ogle

*Engraving*

Central Engraving Co.

Mr. Harry Swain, Jr.

*Printing*

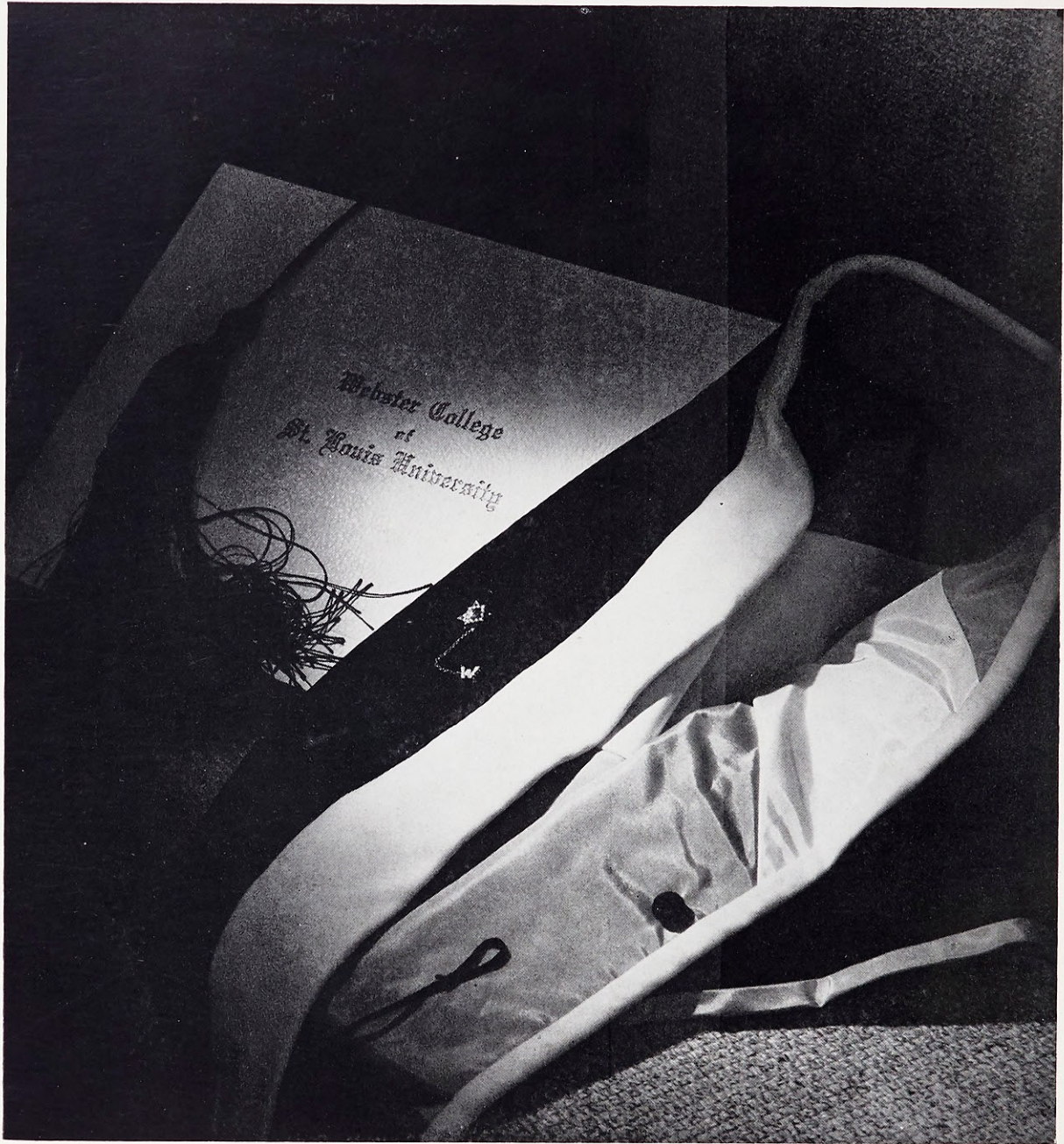
Von Hoffmann Press



*"A symbol shining brightly through the night"*

## *Dedication*

To a Loretine pioneer in the field of Sociology. For twenty-five years her guidance and interest have been a source of inspiration and encouragement to students here at Webster. We are proud to dedicate this Lauretanum of nineteen hundred and forty-five to Sister Mary Aubert.



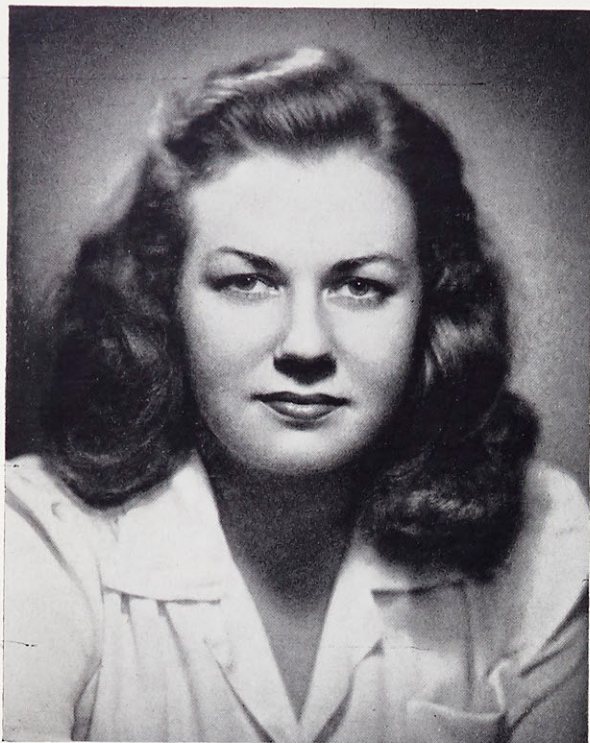
*"Dear Alma Mater of my heart"*

*Presenting the Seniors*

*Graduates of 1945*

"Loyalty, pledg'd to thee  
Throughout the far distant years."

# Senior



*Marcelle Barbazan*

New Orleans, Louisiana  
B.S. IN DIETETICS

Toddy. A pixie from Dixie. Red Room won't be the same without this Southern belle's honeyed drawl and infectious giggle. New York's gain till Mac comes back.



*Mary Pat Almstedt*

St. Louis, Missouri  
A.B. IN ENGLISH

Interestingly individual. Indefinable wit. Enviably smooth and self-assured. Intrigued by Chaucer. Loretine's chief-of-staff.



*Winkin', Blinkin', and Tod*



*Cute trick*

Sodality '42, '43, '44, '45.  
Dietetics Club '42, '43, '44, '45.  
Choral Club '42, '43.  
Sociology Club '45.  
French Club '42, '43, '44.  
Red Room Committee '42, '45, Chairman '45.  
Campus Carnival Booth Chairman '44.

Sodality '42, '43, '44, '45.  
*Loretine* Editor '45.  
Class Secretary '43.  
French Club '42, '43.  
Science Club '42.  
English Club '42.  
Sociology Club '45.  
Inter-collegiate Sociology Club '45.  
Campus Carnival Booth Chairman '44.

# Class



*Madeleine Costa*

St. Louis, Missouri  
A.B. IN SOCIOLOGY

Cultured to those tapering fingertips. "Mad" is crowned with braids and brains. "Social" in work and play. As always the bride will be well-"groomed"—by Don.

Sodality '42, '43, '44, '45.  
Student Spiritual Council '44, '45.  
Hall President '45.  
Class Representative '43.  
Who's Who '44, '45.  
May Maid '44.  
English Club '42, '43, '44, '45.  
Spanish Club '42, '43, '44, '45.  
Poetry Club, '44, '45.  
International Relations Club '42.  
Western Section Club, President '43.  
House Committee '44, '45, Chairman '45.  
Freshman Advisory Committee '43.

Sodality '42, '43, '44, '45.  
Class Treasurer '44.  
Spanish Club '42, '43, '44, Secretary '44.  
North St. Louis Section Club, President '45.  
Sociology Club '45.  
May Maid '43.



*Judy Biller*

Denver, Colorado  
A.B. IN ENGLISH

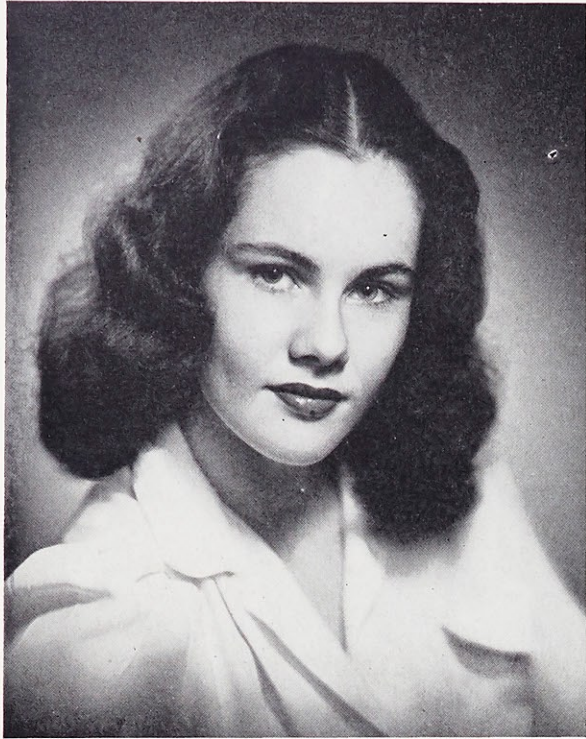
Chocolate brown eyes. Sincere and happy-hearted. As sweet as a lullaby. Key girl of Loretto Hall. Famous last words—"Sister, please—."



*A-door-able*

*"A man with every diploma"*

# Senior



*Jeanne Dolan*

St. Louis, Missouri  
B.S. IN DIETETICS

A typical Irish colleen. Raven hair and sky-dyed eyes. Makes friends as easily as she makes devil's food cake. She thirsts to be a thrush.



*Erna Didden*

St. Louis, Missouri  
B.S. IN DIETETICS

Feminine. Fun-loving. She plans the most fiendish jokes. Smoky blue eyes suit her capricious moods. A portrait in pastels.



*The end of the rainbow*

*Too late, Erna, we already took it!*

Sodality '42, '43, '44, '45.  
Dietetics Club '42, '43, '44, '45.  
Spanish Club '42, '43.  
Science Club '42, '43.  
May Maid '42.

Sodality '42, '43, '44, '45.  
Dietetics Club '42, '43, '44, '45, Treasurer '45.  
Spanish Club '42, '43.  
Science Club '42, '43.

# Class



*Margaret Els*

Jennings, Missouri  
DIETETICS

As quiet and charming as the hush of morning. Sapient, systematic, friendly. Laden with books, but never with cares.

University of Missouri '42, '43.  
Student Government Association '44, '45.  
Dietetics Club '44, '45.

Sodality '42, '43, '44, '45.  
Music Guild '44.  
French Club '42, '43.  
Science Club '42, '43.  
Noble Elements Treasurer '45.  
Sophomore Chemistry Award '43.  
Junior-Senior Chemistry Award '44.



*Valerie Douglas*

Brentwood, Missouri  
B.S. IN CHEMISTRY

Pretty brown eyes and intelligent, too. A calm, pleasant disposition. She has quietly entered Webster's heart. Valerie anticipates entering nursing.



*She's in the "Pink"*

*Worth her weight in A's*

# Senior



*Mary Catherine Ferris*

• Sterling, Illinois  
A.B. IN ENGLISH

Fugitive from food. Her dry wit would make a weeping willow laugh. A novel writer. This senior prexy cuts class, too, just to get the Web to you.



*Peggy Fay*

Clayton, Missouri  
B.S. IN CHEMISTRY

Effervescent. Volatile. Dynamic. Enthusiastic about everything from Terry Moore to Tchaikovsky. Chairman of a bank—its slogan, "Give your blood to save a life."



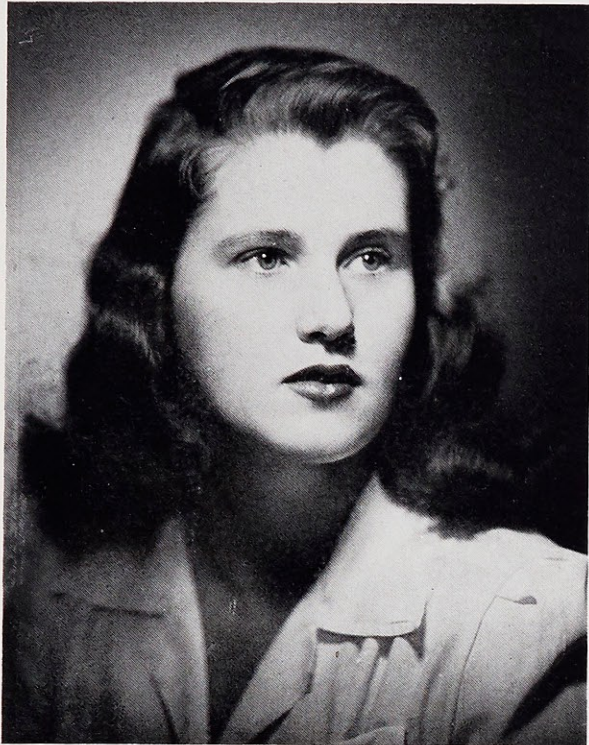
*She's got everything*

*Whistler's sister*

Sodality '42, '43, '44, '45.  
Class President '45.  
Web Assistant Editor '44, Co-editor '45.  
Loretine Staff, '44.  
Lauretanum Staff '44.  
Poetry Club '45.  
Spanish Club '42, '43, '44, '45.  
English Club '44, '45.  
International Relations Club '45.  
Orchestra '42, '43, '44, '45.  
Musical Dialogue Committee Chairman '45.

Sodality '42, '43, '44, '45.  
French Club '42, '43.  
Classical Club '42, '43, '44, '45.  
St. Louis University Classical Club '42, '43, '44, '45, President '43.  
Noble Elements President '45.  
Eta Sigma Phi '43, '44, '45.  
Budget Committee '44, '45.  
Blood Bank Chairman '45.  
Varsity Basketball '42, '43, '44.  
North Side Section Club Secretary '44.  
Campus Carnival Booth Chairman '44.  
Musical Patron Committee Chairman '45.

# Class



*Patricia Flynn*

St. Louis, Missouri  
B.S. IN DIETETICS

Always in an Irish stew. Friendly. Witty. Quick-silver action. Has Scarlett-green eyes. A book marks her leisure time, when she's not cashing in the cafe.

Sodality '42, '43, '44, '45.  
French Club '42, '43, '44.  
Dietetics Club '42, '43, '44, '45.  
Science Club '42, '43.  
Mission Representative '42, '43, '44, '45, Secretary '45.

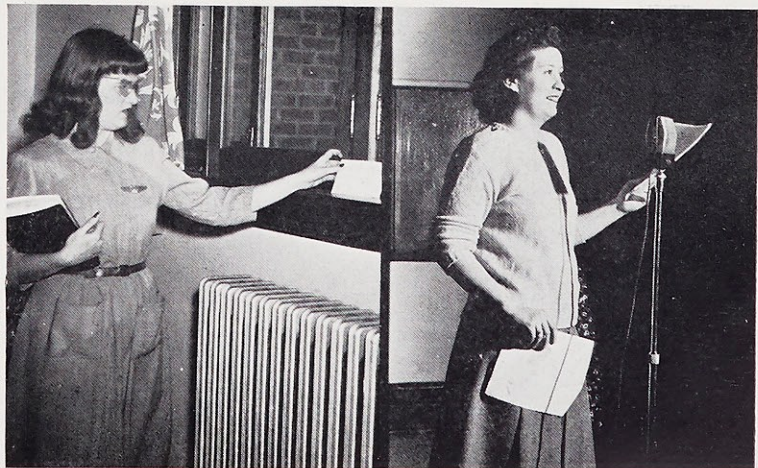
Sodality '42, '43, '44, '45.  
Class Representative '45.  
Secretary Student Government Association '45.  
Who's Who '45.  
Web Staff '42, '43, '44, '45.  
Lorette Staff '45.  
Lorette Players '42, '43, '44, '45, Vice-president '44.  
Spanish Club '42, '43.  
West Side Section Club Secretary '44.  
International Relations Club '43.  
Shakespearean Award '44.  
Freshman Advisory Committee '45.



*Catherine Fleming*

St. Louis, Missouri  
A.B. IN SPEECH

Adventurous. Original. Artistic. Dramatic, yet so natural. Country garden freshness. A confirmed first nighter on both sides of the footlights.



Colonnading

Her "station" in life

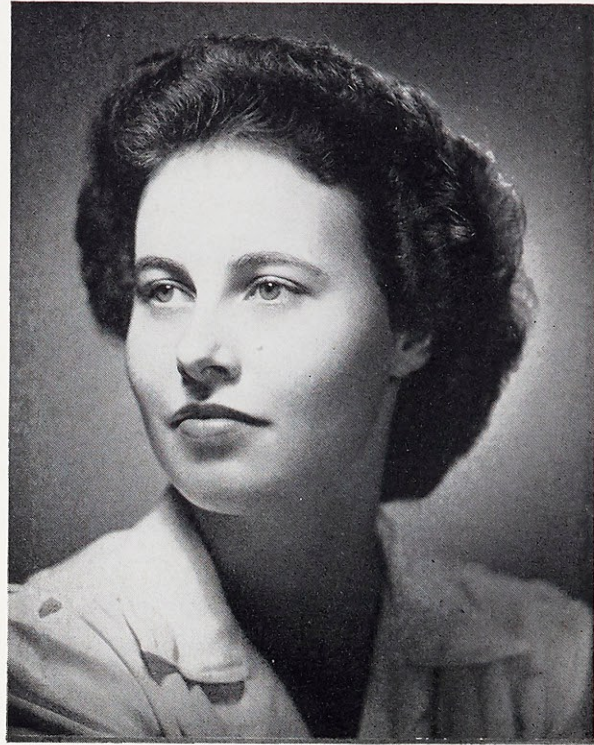
# Senior



*Peggy Hartman*

Rock Hill Village, Missouri  
B.S. IN MUSIC

Symphonic. Shy. Twinkling fingers to match her eyes. Always greets you with a bouquet of smiles. A miss who's mastered the trombone as well as the piano.



*Margaret Mary Haring*

St. Louis, Missouri  
B.S. IN DIETETICS

Rainbow radiance. Tailored elegance. Marg has a capacity for vivacity. In the shadows on opening night, but ever spotlighted in our hearts.



*Pretty sharp*

*A four-bell picture*

Music Guild '42, '43, '44, '45.  
Orchestra '42, '43, '44, '45.  
Spanish Club '42, '43, '44.  
Web Staff.  
Freshman Music Award '42.

Sodality '42, '43, '44, '45.  
Student Spiritual Council '45.  
Class Representative '44.  
Vice-President Student Government Association '44.  
Class Secretary '42.  
Class Vice-president '43, '44.  
Who's Who '45.  
Science Club '43, '45.  
Classical Club '42, '43.  
French Club '42, '43.  
Dietetics Club '42, '43, '44, '45, South St. Louis  
Section Club President '45.  
Musicales Co-chairman '45.  
May Maid '45.

# Class



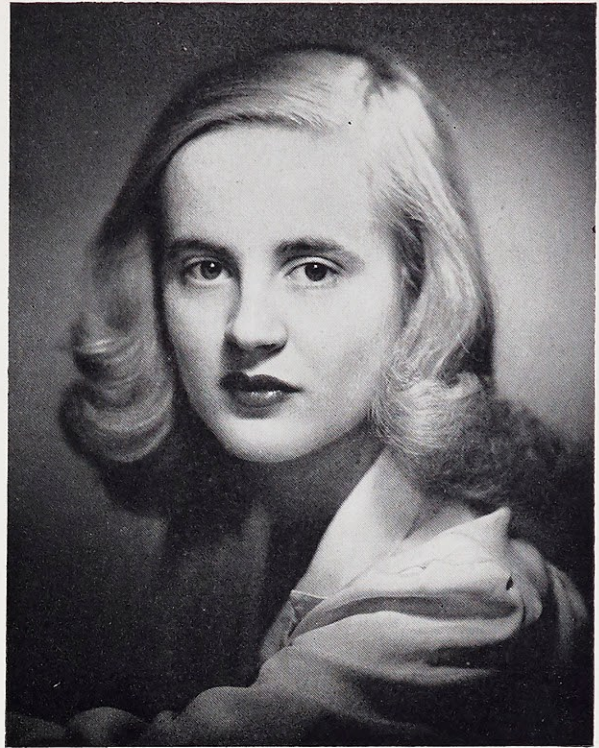
*Clare Hoffmeister*

St. Louis, Missouri  
B.S. IN DIETETICS

Co-operative and cute. So generous she'd give you her earrings—almost. You can rely upon her for a laugh. Her car, the greatest trouble by far. The *Loretine* taught her mathematics.

Sodality '42, '43, '44, '45.  
Class Representative '44.  
*Loretine* Business Manager '45.  
French Club '42, '43.  
Science Club '42, '43.  
English Club '45.  
Dietetics Club '42, '43, '44, '45, Secretary '44.

Sodality '42, '43, '44, '45.  
Science Club '42, '43.  
Dietetics Club '42, '43, '44, '45, Vice-President '44.  
President '45.  
Spanish Club '42, '43.  
Campus Carnival Booth Chairman '44.



*Mary Ann Henckler*

St. Louis, Missouri  
B.S. IN DIETETICS

Petite, doll-like, precious, but with a flair for biology. Luscious as the frosting on her cakes. The orchids are always from Joe.



*He couldn't be that far away*



*A pretty girl is like a melody*

# Senior



*Sylvia Horning*

St. Louis, Missouri  
B.S. IN SPEECH

Gay. Sophisticated. Glamorous. A dram of drama. Her brilliance is reflected on her third finger, left hand. Laugh is typically Sylvian.



*Inge d'Alquen Huber*

St. Louis, Missouri  
B.S. IN MUSIC

Sugar and spice and everything nice, for Jerry. A darling dew-drop with a rosy blush. She leaves, but her melodies linger on forever.



*Foreign correspondent*



*Our Bride and joy*

Sodality '42, '43, '44, '45.  
Loretto Players '42, '43, '44, '45, Secretary-Treasurer '45.  
Web Staff '42, '43.  
Spanish Club '42, '43.  
English Club '45.  
"Dean of the Bridge College" '45.  
Public Speaking Award '42.  
May Maid '44.

Sodality '42, '43, '44, '45.  
French Club '42, '43.  
Orchestra '42.  
Choral Club '45.  
Loretto Staff '43.  
Music Guild '42, '43, Secretary-Treasurer '44, '45.  
Co-composer of Webster School Song '45.

# Class



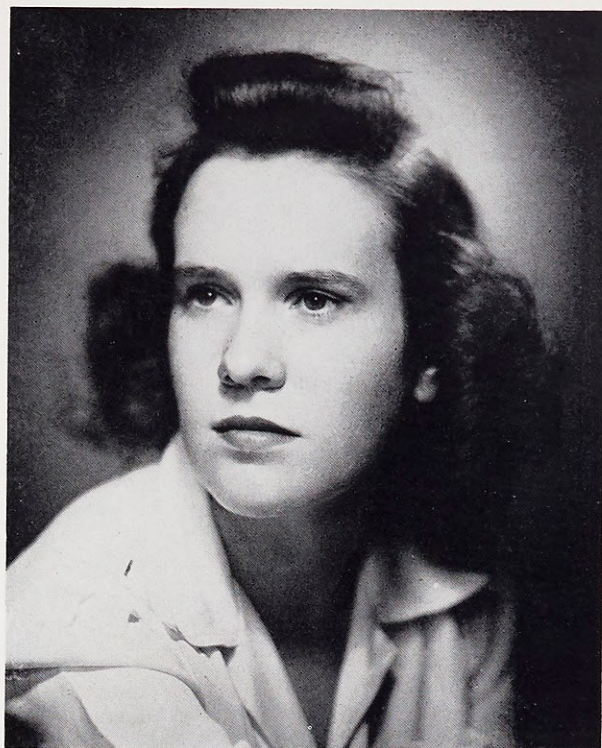
*Mary Grace Kane*

Glendale, Missouri  
A.B. IN FRENCH

Thrifty with S. G. funds. Jovial. Definitely different. Mad about shrimp and poetry. One of her fields of fun is tending tots. "Let me in on this" and "Just one more hand."

Sodality '42, '43, '44, '45.  
Student Government Board '44, '45.  
Treasurer, Student Government Association, '44.  
President, West Side Section Club, '44.  
French Club '42, '43, '44, '45.  
English Club '45.  
Classical Club '42, '43.  
Laval University Scholarship '44.  
Who's Who '45.  
Bond Chairman '45.  
Musical, Stage Manager '45.  
Campus Carnival Treasurer '44.

LeClerc College '42, '43.  
Sodality '44, '45.  
Web Staff '44, '45, Co-editor, '45.  
Poetry Club '44, '45, President '45.  
English Club '44, '45.  
French Club '44, '45, Secretary-Treasurer '44.  
International Relations Club '44, '45, Secretary-Treasurer '45.  
Illinois Section Club '44, '45, Secretary '45.



*Peggy Jones*

East St. Louis, Illinois  
A.B. IN ENGLISH

Good things come in small, wide-eyes packages. Has a purple passion for pink. Likes to "play-like." Wit as light as cotton candy. Her poetry is out of this world.



"Spec" ulating

Phone and Coca-Cola

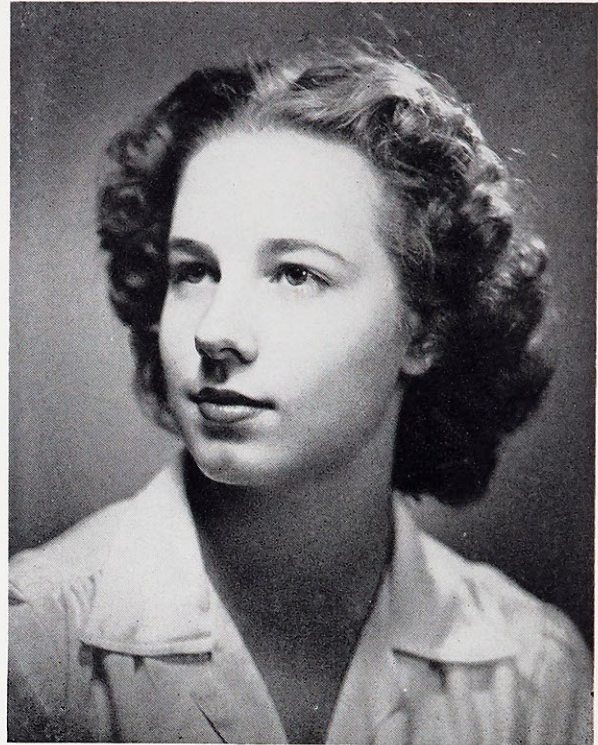
# Senior



*Patricia Kenoyer*

Kansas City, Missouri  
A.B. IN ENGLISH

Pat is potent. Prefect perfect. A classical ballerina. Great for Greek. She just lo-oves horses. Mistress of the musicale.



*Kathleen Kienstra*

Wood River, Illinois  
B.S. IN DIETETICS

Carefree. Charming. "Co-op"-erative. Blithe spirit with droll humor. Liltng laughter. Likes to cook—her specialty is Russian fluff.



*Thoroughbreds*



*Lefty hits it right*

Sodality '42, '43, '44, '45, Vice-Prefect '44, Prefect '45.  
Class President '42.  
Kansas City Section Club, President '43, '44.  
French Club '42, '43.  
Poetry Club '44, '45.  
English Club '44, '45.  
Classical Club '43, '44, '45.  
International Relations Club '44, '45.  
Bond Chairman '43.  
Who's Who '44, '45.  
Campus Carnival, Publicity Chairman '44.  
Co-Chairman Musicale '45.  
Campus Guide Committee Chairman '45.  
Lauretanum Staff '44.  
Web Staff '42, '43, '44, '45, Associate Editor '45.

Sodality '42, '43, '44, '45.  
Hall Vice-President '45.  
House Committee '43.  
Loretine Staff '44.  
Web Staff '45, Circulation Manager  
Dietetics Club '42, '43, '44, '45.  
Science Club '42, '43, '45.  
President, Illinois Section Club '45.  
French Club '42, '43.  
International Relations Club '45.  
C. S. M. C., Secretary-Treasurer, '43.  
Co-op Manager '45.  
Chairman, Blood Bank '45.  
Musicale, Chairman Ticket Committee '45.

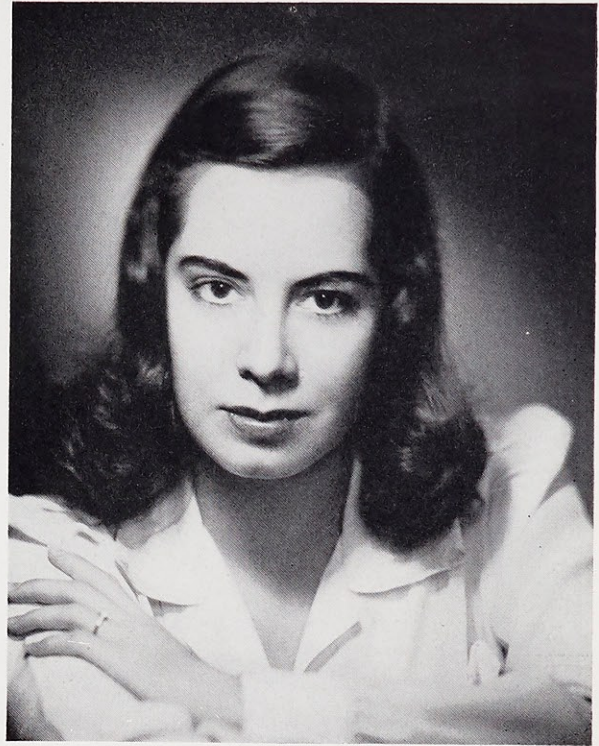
# Class



*Carmen Melendez*

Guayama, Puerto Rico  
A.B. IN FRENCH

Pan-American panic. "Carmita" is a brown-eyed, brown-haired senorita from the tropical island of Puerto Rico. Curious about everything. The click-click of high heels. Sweet as the candy she dotes on.



*Virginia Knese*

St. Louis, Missouri  
A.B. IN ENGLISH

A "model" student. She's lovely, she's engaged. Has fun with puns. A walking picture, just stepped out of *Mademoiselle*.



*Going my way*

*Bonita "Senior"ita*

Sodality '41, '43, '44, '45.  
Web Staff '41, '43, '44, '45. Assistant Editor '45.  
Lauretanum Staff, Assistant Editor, '44.  
Junior Philology Section, S. L.-U., Vice-President, '45.  
Eta Sigma Phi '44, '45.  
Classical Club '43, '44, '45. President '44.  
French Club '41, '43, '44, President '45.  
Science Club '41.  
Choral Club '41.  
Co-op Treasurer '41.  
Dietetics Club '43.  
Athletic Association, Vice-President '44.  
English Club '45.  
Cheerleader '41, '43, '44, '45.  
Vodvil '41.

Sodality '42, '43, '44, '45.  
Foreign Section Club, Secretary-Treasurer '44, '45.  
Science Club '42.  
French Club '42, '43, '44, '45.  
Spanish Club '42, '43, '44, '45.  
International Relations Club '43, '44, '45.  
English Club '45.

# Senior



*Marguerite Milford*

Webster Groves, Missouri  
A.B. IN ENGLISH

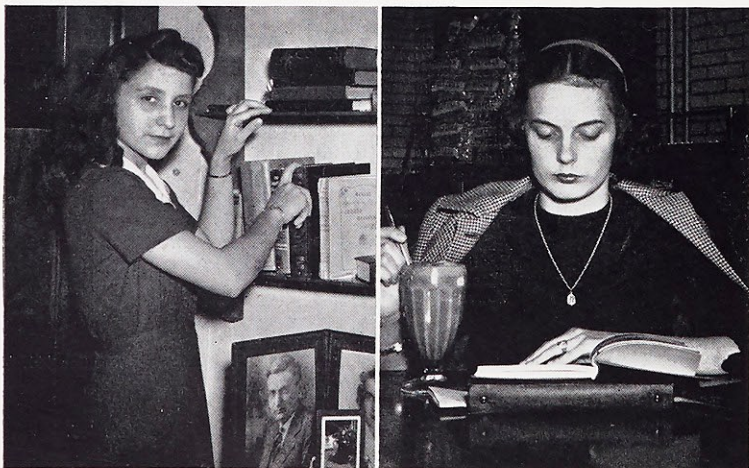
Tiny dynamo. Sparks the Classical Club. Spanish scholar. Wears two pins—Webster's and Bob's. Snoops for Alumnae scoops for the *Lorette*.



*Georgette Mercier*

Victoriaville, Canada  
B.S. IN DIETETICS

Une Fleur de lis. As French as pastry. Her old world charm spins a moment into a memory. She'll make a beautiful June bride.



*La Belle Mademoiselle*

*Drinking in Knowledge*

Sodality '42, '43, '44, '45.  
French Club '42, '43, '45.  
Spanish Club '42, '43, '44.  
International Relations Club '42, '43, '44, '45, Secretary '43, '44.  
Science Club '43.  
Foreign Section Club '43, '44, '45, Secretary '44, President '45.  
Lorette Players '44.  
Dietetics Club '43, '44, '45.

Sodality '42, '43, '44, '45.  
English Club '45.  
International Relations Club '44, '45, Vice-President '45.  
Spanish Club '42, '43, '44, '45, President '44.  
Classical Club '43, '44, '45, Secretary-Treasurer '44.  
St. Louis U. Classical Club, Secretary '45.  
Poetry Club '45.  
Press Club '45.  
*Lorette* Staff '45.

# Class



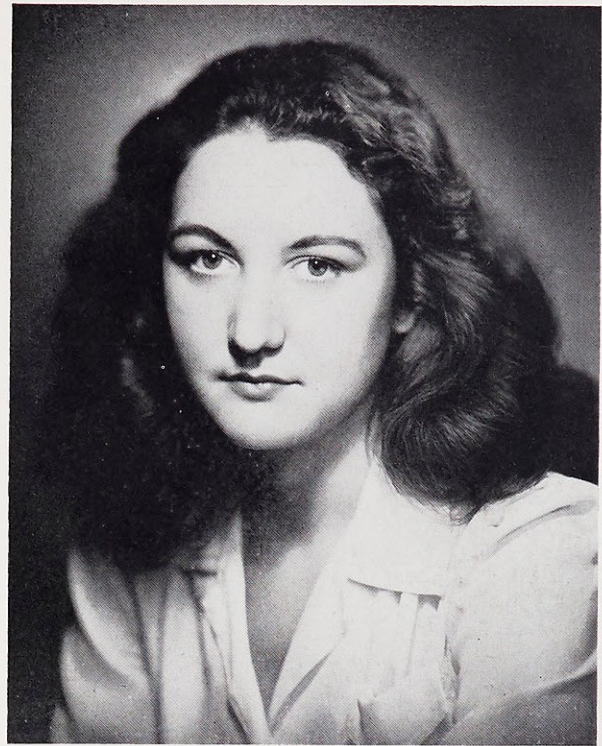
*Helen Muser*

Kansas City, Missouri  
B.S. IN CHEMISTRY

Like a story-book doll—bright-eyed. Impish and gracious. Minute but mighty. Known as Professor Muser at the U. "It's a riot."

Sodality '42, '43, '44, '45.  
Class Treasurer '45.  
Lorette Staff '44.  
Web Staff '42, '43, '44, '45. Business Manager '45.  
Science Club '42, '43, '45.  
French Club '42, '43.  
English Club '44.

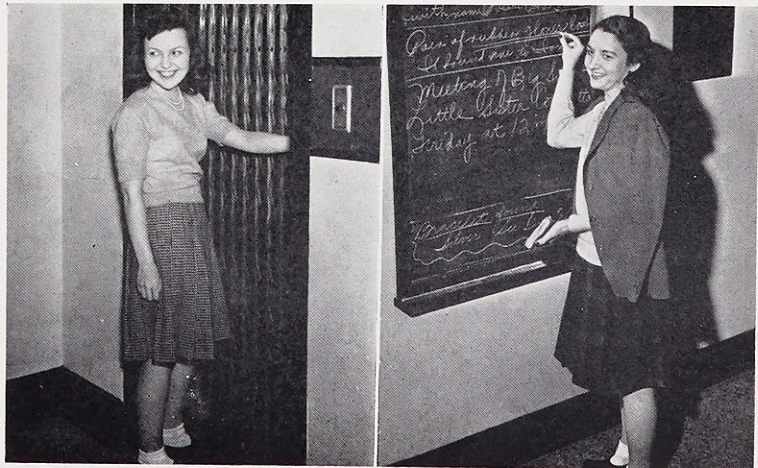
Sodality '42, '43, '44, '45.  
Lauretanum Editor '44.  
Class Vice-President '44.  
Class Treasurer '43.  
Classical Club '43, '44, '45. Vice-President '45.  
St. Louis University Classical Club '43, '44.  
Eta Sigma Phi '43, '44, '45.  
Loretto Players '42, '43, '44, '45. President '45.  
Music Guild '42, '43, '44.  
Scholarship to University of Cuba '44.  
Shakespearean Award '43.  
Spanish Club '42, '43, '44. Treasurer '43.



*Evelyn O'Sullivan*

St. Louis, Missouri  
A.B. IN SPANISH

A friend for life. Our good neighbor to Cuba. Knits and dances alternately. Get her to play Malagueña for you. Anxious to applaud and gets a big share herself.



*Life has its ups and downs*

*Chalk Talk*

# Senior



*Ruth Ottens*

St. Louis, Missouri  
B.S. IN DIETETICS

Our basket belle gets A's with ease. Generous, thoughtful, cute in the kitchen. She and her bus just belong at Webster.



*Joan Oulvey*

East St. Louis, Illinois  
B.S. IN DIETETICS

A titian dietitian. Marvelous sense of humor—urge to do something silly. Attractive, dependable with a mind of her own.



*Daisies don't tell*

*One-Love*

Sodality '42, '43, '44, '45.  
Class Secretary '45.  
Dietetics Club '42, '43, '44, '45, Secretary '43.  
French Club '42, '43.  
Science Club '42, '43.

Sodality '42, '43, '44, '45, Treasurer '43.  
Class President '44.  
Athletic Association, Treasurer '43, President '45.  
Dietetics Club '42, '43, '44, '45.  
Choral Club '42.  
French Club '42, '43, '44, '45.  
Classical Club '45.  
Science Club '42, '43, '45.  
Chemistry Award '42.  
French Award '43.  
Bond Queen '43.  
Musical, Chairman of House Committee '45.  
Varsity '42, '43, '44, '45.

# Class



*Dorothy Riffel*

Moberly, Missouri  
A.B. IN SOCIOLOGY

Webster's Wordsworth. Coiffure changes with every chic chapeau; eyes change color with every dress. She talks with her hands.

Sodality '42, '43, '44, '45.  
House Committee '44.  
Athletic Board '45.  
Science Club '42, '43, '45.  
French Club '42, '43.  
Campus Carnival, Publicity Committee Treasurer '44.  
Musical, House Committee Treasurer '45.

Mount St. Scholastica College '42, '43.  
Sodality '44, '45.  
Lorette Staff, '44, '45, Circulation Manager '44.  
Web Staff '44, '45.  
English Club '44, '45.  
Poetry Club '44, '45, Secretary '45.  
Loretto Players '44, '45.  
Sociology Club '45.  
May Maid '45.



*Shirley Paden*

Kankakee, Illinois  
B.S. IN BIOLOGY

Responsive, congenial, clever. Always a fourth at bridge on Thursday. "Shirts" carries everything in her pocket but her biological specimens.

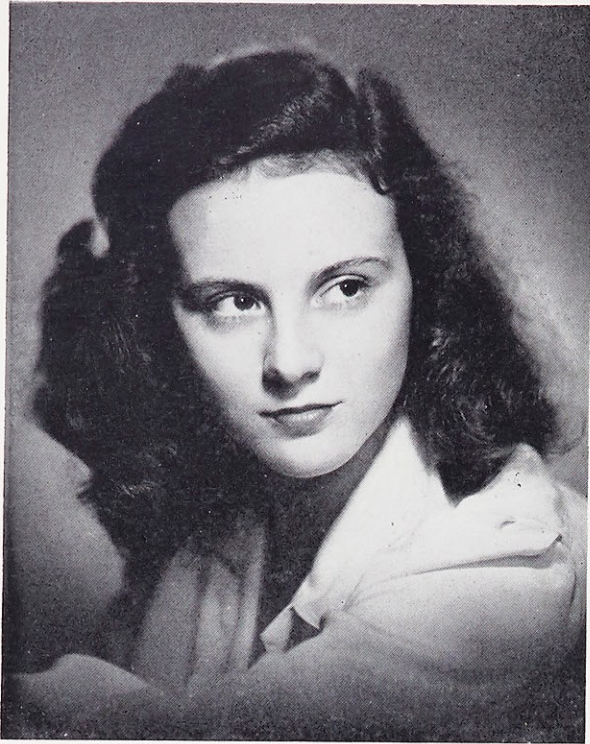


*What does she see in it?*



*Sign of a good time*

# Senior



*Betty Marie Schweitzer*

Webster Groves, Missouri  
A.B. IN FRENCH

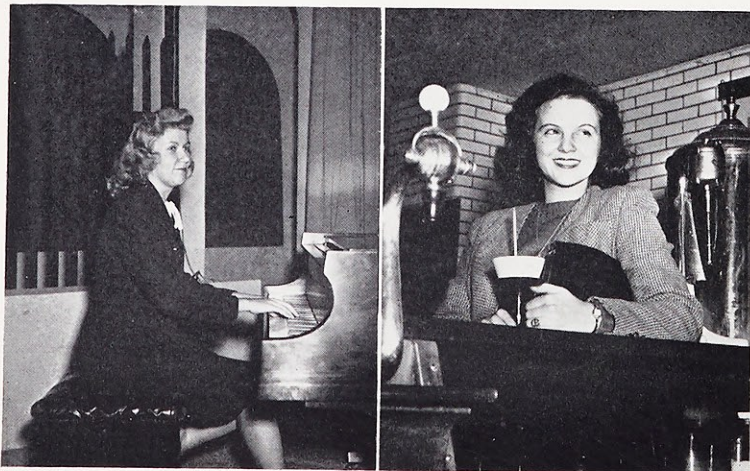
A "classical" beauty. Bubbling champagne. Eyes that sparkle with stardust. Speaks French like a native. As dependable as the swallows of Capistrano.



*Peggy Versen*

St. Louis, Missouri  
B.S. IN MUSIC

Peg of our hearts. Tall, blonde, and attractive. Staccato, rhythmic. A symphony of laughter and song. Major music master. Gets a bang out of being.



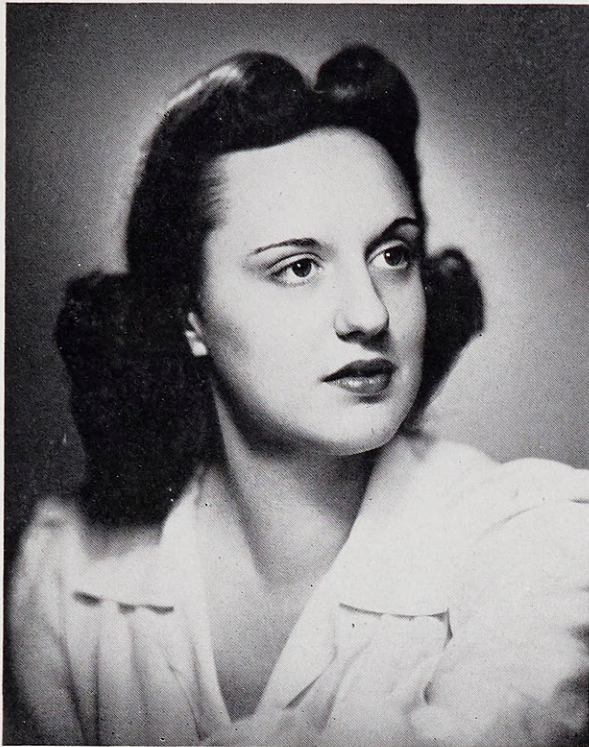
*Piano is her forte*

*Is that smile on the menu?*

Sodality '42, '43, '44, '45.  
Loretine Staff '43.  
Spanish Club '42, '43.  
Choral Club '42.  
Music Guild '42, '43, '44, '45, Secretary Treasurer '43,  
President '44, '45.  
Music Award '43.  
Co-Composer of Webster School Song '45.

Sodality '42, '43, '44, '45.  
Loretine Staff, Associate Editor, 44.  
Athletic Association '42, '43, '44, '45, Secretary '43.  
French Club '42, '43, '44, '45, President '44.  
Spanish Club '42, '43.  
Classical Club '42, '43, '44, '45, President '43.  
St. Louis U. Classical Club, Treasurer '43.  
Eta Sigma Phi '43, '44, '45, Treasurer '45.  
Laval University Scholarship '43.  
Who's Who '45.  
French Award '43.  
Spanish Award '43, '44.  
Musical Program Chairman '45.  
Varsity '42, '43, '44, '45.

# Class



*Lucille Walde*

St. Louis, Missouri  
B.S. IN DIETETICS

Our queen of love and beauty . . . Willowy, precisely tailored. "Bridges" the gap between classes. Bound for New York to delve into Dietetics.

Sodality '42, '43, '44, '45.  
Spanish Club '42, '43.  
Science Club '42, '43.  
Dietetics Club '42, '43, '44, '45, Secretary '43, President '44.  
Campus Carnival, Booth Chairman '44.  
May Queen '44.

Sodality '42, '43, '44, '45.  
President of Student Government Association '45.  
Class Vice-President '42.  
Class President '43.  
Freshman Advisory Committee '44.  
Spanish Club '42, '43.  
Science Club '45.  
Dietetics Club '42, '43, '44, '45.  
Honorary Member of Poetry Club '45.  
Chemistry Award '43.  
Who's Who '44, '45.



*Marie Vlatkovich*

St. Louis, Missouri  
B.S. IN DIETETICS

A genius at remembering names. A knack for people and a knack for the rostrum as our Student Government president. Friendly, reliable, and a powerful leader, but serenity itself. Dr. D's right hand man.



*Ready? Set?*



*Campus Guide*

# Senior



*Bette Walsh*

St. Louis, Missouri  
B.S. IN DIETETICS

Ace of hearts and tarts. As gay as a carnival.  
One of the intelligentsia. Witty and wilesome.  
Likes four-alarm excitement.



*Ann Rita Willard*

Knoxville, Tennessee  
A.B. IN ENGLISH

Soft-spoken, Southern beauty. Delicate and  
dreamy as magnolia blossoms. Ethereal verse-  
down to earth international views.



*All the comforts of home*

*Hot Stuff*

Sodality '42, '43, '44, '45.  
Student Spiritual Council '43, '44, '45.  
Web Staff '42, '43, '44, '45.  
Loretine Staff '43, Associated Editor '44, Assistant Editor, '45.  
Lauretanum Staff '45.  
Southern Section Club '43, '44, '45, Secretary '43.  
English Club '44, '45, President '45.  
International Relations Club '44, '45, President '45.  
Spanish Club '42, '43.  
Poetry Club '45.

Sodality '42, '43, '44, '45.  
Loretine Staff '45.  
Web Staff '42, '43, '44, '45.  
French Club '42, '43.  
Science Club '42, '43.  
Dietetics Club '42, '43, '44, '45.  
Sociology Club '45.  
Inter-Collegiate Sociology Club '45.  
Orchestra '42, '43.  
Campus Carnival, Booth Chairman '44.

# May Day

May Day at last. . . . Two innovations, the sun shining and naval cadet escorts. . . . Daisy Chain formed by the Seniors. . . . Ellanora Valle, retiring queen. . . . Receives homage of the court. . . . Margaret Robinson, Nancy Volm, Ann Young, Senior maids. . . . Judy Biller, Sylvia Horning, Juniors. . . . Marie Donnelly, Darothy Sympton, Sophomores. . . . Rita Fields, Freshman. . . . Sweet flower girls. . . . Impish little crown-bearer. . . . Ellie crowns the new queen, Lucille Walde. . . . Entertainment



for the court. . . . Traditional Freshman Maypole Dance. . . . Ballet soloist, Dorothy Schulte. . . . Peasant duet, Betty Lou Coffey, Ruth Mount. . . . Recessional, followed by Queen's Tea.





Kay Wheeler, Treasurer; Marilyn Morheuser, President; Jeanette Morgan, Secretary, and Chris Musso, Vice-President.



Nancy Ries, Margaret Mills, Anna Marie Alsobrook, Mary FitzGerald, Alice Grosdidier.

## Junior

Anna Marie Alsobrook  
 Vera Deutschmann  
 Marie Donnelly  
 Doris Federer  
 Mary FitzGerald  
 Jane Fitzsimons  
 Marie Gillespie

Alice Grosdidier  
 Joan Harrigan  
 Marcella Kommer  
 Bernice Koster  
 Kathy Lambrechts  
 Shirley Lampman  
 Elizabeth Lattimore

Margaret Letzig  
 Peggy Lowey  
 Joan Lubeley  
 Bette Macken  
 Luetta Meiners  
 Margaret Mills  
 Catherine Mitchell

Marcella Kommer, Joan Lubeley, Margaret Nickolaus, Marie Gillespie.

Terry Wand, June Zerwekh, Marie O'Brien, Bernice Koster, Vera Deutschmann.





Jean Morgan, Catherine Mitchell, Shirley Lampman, Dorothy Mitchell.



Joan Harrigan, Jane Fitzsimons, Mel Letzig, Marie Donnelly, Doris Federer, Peggy O'Neill.

# Class

Dorothy Mitchell  
 Jean Morgan  
 Jeanette Morgan  
 Marilyn Morheuser  
 Christine Musso  
 Margaret Nickolaus

Margie O'Brien  
 Peggy O'Neill  
 Marianne Planthold  
 Nancy Ries  
 Ann Skidmore  
 Dorothy VanHoogstrate

Terry Wand  
 Kay Wheeler  
 Jean Willard  
 Irene Zeis  
 June Zerwekh

Peggy Lowey, Dorothy VanHoogstrate, Irene Zeis.

Top: Jean Willard, Marianne Planthold. Bottom: Kathy Lambrechts, Bette Macken.





B. Cooper, Vice-President; P. Jostedt, President; A. Ottersbach, Secretary;  
M. Morheuser, Treasurer.



V. Dill, P. Tyler, P. Powers, K. Blomes, T. Bernard.

## Sophomore

Trudy Bernard  
Mary Louise Berry  
Katie Blomes  
Jean Blottman  
Rosemary Burns  
Alma Burcke  
Helen Byrne  
Peggy Casey  
Anne Harmon Chase  
Jackie Chauvin  
Betty Lou Coffey

Margaret Ann Conboy  
Betty Convy  
Betty Cooper  
Virginia Dill  
Rita Fields  
Mary Clare Geerling  
Marlyn Greaving  
Millie Harrison  
Clarita Hennenfent  
Joy Herman  
Pam Hoffman

Peggy Jostedt  
Jean Kienstra  
Betty Kirchoff  
Mary Louise Lampen  
Ann Johnson  
Ann Luckinbill  
Lorraine Ludwig  
Mary Catherine McDonough  
Gertrude Mabry  
Pat Manion  
Margie McIntyre

P. Hoffman, G. Bernard, P. Mistrot, S. Nies, B. Coffey, M. L. Berry,  
M. Samuels, M. C. Geerling, B. J. Wolf.

A. Luckinbill, M. Conboy, L. Paden, M. A. Schaaf, K. Miles,  
A. H. Chase, C. Hennenfent, P. Nolan.





Standing: D. Schulte, I. Vatterott, B. L. Ruprecht, M. McIntyre, M. J. Reid, P. Walsh, A. Burcke. Sitting: R. Reid, J. Chauvin.



P. Manion, R. Burns, J. Sanftleben, L. Ludwig, B. Kirchoff, P. Casey, P. Powers.

## Class

Katherine Miles  
 Mary Virginia Michel  
 Putsy Mistrot  
 Ruth Mount  
 Marie Morheuser  
 Jackie Niehoff  
 Shirley Nies  
 Aurelia Ottersbach  
 Pat Nolan  
 Lois Paden  
 Mary Arline Powell

Pat Powers  
 Mary Jane Reid  
 Rose Mary Reid  
 Mary Riffel  
 Isobel Robinson  
 Mary Louise Rogers  
 Betty Lou Ruprecht  
 Marjorie Ryan  
 Mordie Samuels  
 Josephine Sanftleben

Mary Ann Schaaf  
 Terry Shiina  
 Dorothy Schulte  
 Jean Sinclair  
 Pat Tyler  
 Ione Vatterott  
 Pat Walsh  
 Mary Jo Wieneke  
 Betty Jane Wolff  
 Nancy Wright

J. Kienstra, N. Wright, M. Harrison, V. Michel, M. L. Lampen, R. Fields, T. Shiina, G. Mabry.

M. Riffel, M. Ryan, J. Blottman, B. Convy, M. C. McDonough, R. Mount, M. L. Rogers, J. Herman.



# Freshmen



First Row: H. Guchereau, E. Sullivan, M. L. Kiel, M. Moosey, M. Wesley, P. Des Laurier, C. Johnson, K. Mulligan. Second Row: B. Feeney, T. Barila, M. Gebhart, C. Means, M. Arriola, P. Holliger, D. Eckhold, A. Koch, M. Roberts, B. Bradley. Third Row: P. Austin, K. Hammes, R. A. Vinehage, M. Clifford, M. C. Weaver, P. Volz, L. O'Neill, M. J. Walker, P. Murrell, C. Kester, K. Hutchinson, T. Muto, J. Wilson, M. A. Weidinger, L. Murphy, A. Stull, I. Dow.

Pat Abbott  
 Margarita Arriola  
 Pat Austin  
 Dorothy Bahn  
 Marcella Bannon  
 Teresa Barila  
 Louise Berney  
 Margarita Bolanos  
 Marion Boos  
 Virginia Brabec  
 Catherine Bradley  
 Jean Breville  
 Dolly Brogan  
 Rosemary Burke  
 Haydee Carrasquillo  
 Gloria Chickey  
 Pat Clancy  
 Jane Clark  
 Colleen Clelland  
 Mary Clifford  
 Caridad Cocina  
 Rita Couch  
 Marietta Cravens

Pat Cravens  
 Mary Curley  
 Yoma DeLeo  
 Phyllis Des Lauriers  
 Juanita Donnewald  
 Iris Dow  
 Betty Jo Duisen  
 Ann Dintelmann  
 Colleen Donworth  
 Doris Eckhold  
 Mary Alice Engler  
 Tirzah Epperson  
 Pat Eskridge  
 Grace Faherty  
 Marcella Falvey  
 Bernadine Feeney  
 Eileen Feeney  
 Rita Fennewald  
 Bernice Fields  
 Pat Filstead  
 Lois Fisher  
 Jean Frerker  
 Agnes Anne Gabriel

Dorothy Sue Gaines  
 Mary Gebhart  
 Jeanne Geoffroy  
 Hannah George  
 Peggy Goff  
 Jean Grennan  
 Helen Guchereau  
 Betty Haley  
 Barbara Hanlon  
 Kathlyn Hammes  
 Norma Jean Hardin  
 Evelyn Hartman  
 Marilyn Hayes  
 Margaret Hayes  
 Gloria Hesser  
 Jeanne Higgins  
 Lois Hillner  
 Pat Holliger  
 Mary Holtschneider  
 Virginia Holtsnider  
 Muriel Hoogstraet  
 Lucille Hotto  
 Carolyn Huber

# Class

Pat Hund  
 Katherine Hutchinson  
 Dolores Isenman  
 Virginia Jokerst  
 Carolyn Johnson  
 Shirley Jordan  
 Mary Jo Kellerman  
 Corrine Kester  
 Lorraine Kester  
 Mary Lou Kiel  
 Mary Claire Kirchmer  
 Audrey Koch  
 Dorothy Koziatek  
 Elaine Krueger  
 Marjorie Kurz  
 Sally Laux  
 Ellen Lee  
 Ann Luckey  
 Barbara Luechtefeld  
 Mary Lynch  
 Mary Lyons  
 Betty McAllister  
 Doris McCann  
 Jerry Maguire



First Row: E. Quick, J. Sullivan, D. Le Fevre, M. F. McLaughlin, D. Bohn.  
 Second Row: M. E. Small, L. Hotto, J. Sage, J. Frerker.

Mary Agnes McGuire  
 Lois McGowan  
 Mary Frances McLaughlin  
 Mary Frances McLaughlin  
 Madeline McMahan  
 Audrey Maher  
 Jackie Markway

Catherine Means  
 Mary Sue Meyer  
 Rose Mary Missel  
 Marie Moosey  
 Nida Moses  
 Kathleen Mulligan  
 Catherine Murphy



First Row: V. Holtsnider, A. M. Petersen, E. Hartman, E. Lee, M. C. Kirchmer, J. O'Neill, M. Lyons, M. Hayes, N. Moses, M. A. McGuire. Second Row: G. Chickey, V. Jokerst, A. Engler, J. O'Hara, J. Clark, H. George, D. Schulte, B. McAllister, B. Fields, R. M. Missel. Third Row: L. Hillner, M. Naxera, R. Burke, D. Koziatek, C. Donworth, R. Strubel, E. Krueger, B. Riemeyer, C. Murphy, R. Overbeck, J. Sheridan, J. Donnewald, D. Isenman, M. Boos, A. Dintelmann.

# Freshmen



First Row: R. Naef, L. Peck, R. Weismantel, P. Abbott, S. Laux, J. Maguire, M. Trout, P. Hund, P. Clancy. Second Row: M. K. Wombacher, M. Falvey, M. Hoogstraet, D. Rust, E. Feeney, J. Grennan, V. Brabec, M. Hayes, G. Hesser, R. Couch. Third Row: M. Curley, T. Epperson, G. Faherty, J. Reichenbacher, D. Gaines, H. Murphy, L. Vitt, M. Ryan, M. Kurz, L. Berney, V. Rosenthal, B. Luechtefeld, J. Breville.

Helen Murphy  
Jean Murphy  
Lucy Murphy  
Ann Murray  
Peggy Murrell  
Therese Muto

Rosemary Naef  
Phoebe Nan Nash  
Mary Naxera  
Jane O'Hara  
Jean O'Neill  
Lena O'Neill

Rosemary Overbeck  
Betty Paquin  
Pat Payne  
Lorene Peck  
Lucy May Perry  
Anna Mae Petersen  
Beatrice Pott  
Eleanor Quick  
Kathleen Regan  
June Reichenbacher  
Bernice Riemeier  
Margaret Roberts  
Virginia Rosenthal  
Pauline Rousseau  
Dolores Rust  
Mary Ryan  
Jean Sage  
Dorothy Schulte  
Mary Catherine Sheahan  
Jeanne Sheridan  
Mary Ellen Small  
Nancy Staed  
Barbara Stolwyck  
Rosemary Strubel



H. Carrasquillo, M. McMahon, A. A. Gabriel, M. Lynch, P. Rousseau, C. Cocina.

# Class

- Mary Jean Stuever
- Ann Stull
- Ellen Sullivan
- Jill Sullivan
- Helen Tong
- Margie Trout
- Rose Ann Vienhage
- Louise Vitt
- Pat Volz
- Mary Virginia Vorbeck
- Mary Jewell Walker
- Betty Walsh
- Dorothy Warner
- Mary Catherine Weaver
- Ann Webb
- Jane Ann Webb
- Mary Ann Weidinger
- Rosemary Weismantel
- Phyllis Welsh
- Marie Wesley
- Virginia Williams
- Jean Wilson
- Mary Kay Wombacher



M. J. Kellerman, K. Mulligan, C. Huber.

First Row: K. Regan, M. Cravens, J. Geoffroy, J. A. Webb, A. Webb, P. Filstead, M. S. Meyer, J. Higgins, P. N. Nash. Second Row: M. C. Sheahan, B. J. Duisen, L. M. Perry, V. Williams, N. Staed, M. F. McLaughlin, B. Pott, B. Walsh, L. McGowan, Y DeLeo. Third Row: R. Zeis, P. Payne, A. Maher, L. Fisher, N. J. Hardin, J. Markway, P. Welsh, B. Hanlon, D. McCann, S. Jordan, B. Paquin, L. Kester, H. Tong, M. J. Steuver, P. Cravens.





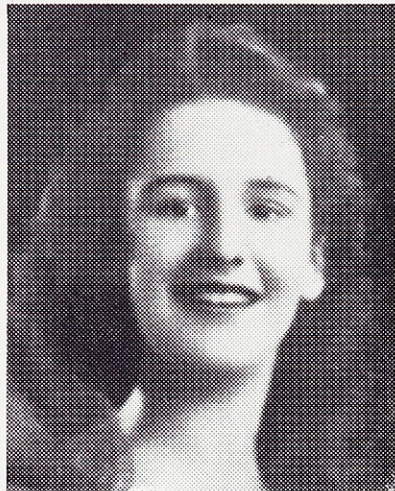
*A World of Activities*

# *There Is A College Called Webster*

There is a college called Webster,  
Green ivy-clad are her walls,  
Long live her laughter forever and after  
That echoes through her halls.

Dear Alma Mater of my heart,  
Thy spirit proudly sets thee apart.  
Thy banner, streaming colors gold and white,  
A symbol shining brightly through the night.  
The friendships formed in Webster's name  
Will honor thy glory and fame.  
Loyalty, pledg'd to thee  
Throughout the far distant years.

# Sodality



Our Prefect,  
Pat Kenoyer

*Prefect* - - - - - PAT KENOYER  
*Vice-Prefect* - - - MARGARET NICKOLAUS  
*Secretary* - - - - - KATIE BLOMES  
*Treasurer* - - - - - KATHY LAMBRECHTS

*Committees—*

*Eucharistic* - - - - - MARG HARING  
*Our Lady's* - - - MARGARET NICKOLAUS  
*Apostolic* - - - - - MILLIE HARRISON  
*Mission* - - - - - BETTE MACKEN  
*Co-op* - - - - - JOAN HARRIGAN  
*Literature* - - - - ANN RITA WILLARD  
*Publicity I* - - - - KATHY LAMBRECHTS  
*Publicity II* - - - - - BETTY CONVY

Under Mary's guidance the Sodality reached new heights. Strict probation . . . Freshmen reception and breakfast . . . First Friday adoration . . . Forty hours . . . Silence for peace . . . Three "heavenly" days under Father Holloran . . . Discussions during Vocation Week . . . May Day crowning in the chapel . . . Mothers and daughters at tea . . . Live-wire committees: Teach Catechism to Negro children . . . Clothes drive . . . Pamphlet drive for the Services . . . Presentation of "King of Kings" . . . Weekly Sodality bulletin . . . Bulletin board decoration . . . Honor roll.



# Student Government Association

Just completed one of the most active years in history . . . Welcome to the Freshmen the first week of school . . . parties, shows, sight-seeing . . . Hey-Day did so much to get every one acquainted . . . Big Sister-Little Sister party huge success . . . Trip to Notre Dame marking the highlight of the football season . . . still being talked about . . . Winter Wonderland, sponsored by the Juniors, climaxes the first semester . . . Christmas spirit lending itself wholeheartedly to the occasion . . . Second semester started with a New Order at Webster . . . Freshmen in high ranking offices . . . February . . . Websterites give their all at the second Blood Bank of the year . . . St. Patrick lauded to the skies when the Freshmen went all out at the Little Sister-Big Sister party — an Irish Fair . . . Brilliant success, "In Search of a Song," always to be remembered in "There is a College Called Webster" . . . Loretines honored in some measure by a week of programs in their honor . . . Barbecue for our parents . . . June Banquet a traditional success . . . College Hum . . . Stirring songs and tearful thoughts . . . A Webster year — may there always be another!



President - - - - - MARIE VLATKOVICH  
 Vice-President - - - - - MARILYN MORHEUSER  
 Secretary - - - - - CATHERINE FLEMING  
 Treasurer - - - - - MEL LETZIG

Standing: Lois Fischer, Peggy O'Neill, Mel Letzig, Eileen Feeney. Seated: Marilyn Morheuser, Pat Kenover, Marie Donnelly, Judy Biller, Mary Grace Kane, Catherine Fleming, Peggy Jostedt, Mary Lou Rogers. Absent: Mary C. Ferris.



# The Lauretanum

Work gets under way early in October . . . Staff chosen . . . Plans discussed at conferences . . . Photographer, gift from Heaven . . . Seniors' formals at Edwyn's . . . Schedules for pictures posted . . . Everybody cooperates . . . Proofs come back from photographer . . . Which one shall we put in? . . . More pictures . . . Search for atmosphere . . . Some cancelled because of the weather . . . Mad dash to engraver's and printer's . . . Layouts, what kind of print, number of pages, cover? . . . We start writing . . . Articles revised . . . Help from Sister Flaget and Sister Mary Louise . . . Deadline . . . Are we going to make it? . . . We burn the midnight oil . . . Paste, scissors, typewriters . . . Book finally sent to printer's . . . Staff sighs over their lost youth . . . *Lauretanum* presented to you.



Above: Terry Wand, Marie Gillespie, Marcella Kommer, Mary FitzGerald, Margie O'Brien, Jane Fitzsimons.  
 Below: Mary FitzGerald, Margie O'Brien, Terry Wand, Jane Fitzsimons, Marcella Kommer, Marie Gillespie.

Editor - - - - - MARCELLA KOMMER  
 Assistant Editor - - - - - MARIE GILLESPIE  
 Associate Editors - - - { MARY FITZGERALD  
   JANE FITZSIMONS  
 Circulation Manager - - - MARGIE O'BRIEN  
 Business Manager - - - - - TERRY WAND



Marie Gillespie, Marcella Kommer.

# The Web

A brand-new format is chosen for this year's *Web*. Editorial on Federal Aid to Education by Dr. Donovan . . . New features . . . Twenty-five years ago in the *Web* . . . Reid twins solve world headaches in "The Long and Short of It" . . . "Pegging Away" with O'Neill and Jostedt . . . Late assignments . . . Mary-Go-Round gives us religious inspiration . . . writers switch berths for Christmas issue presents . . . Extra, *Web, Jr.*, scoops election of Freshmen "New Dealers" . . . *Web* puts on Easter bonnet under management of Journalism I class.

Co-Editors - - - - -	{ MARY C. FERRIS PEGGY JONES
Assistant Editor - - - - -	VIRGINIA KNESE
Associate Editors - - - - -	{ PAT KENOYER JOAN LUBELEY
Feature Editor - - - - -	DOROTHY VAN HOOGSTRATE
Business Managers - - - - -	{ KATHIE LAMBRECHTS BETTE MACKEN HELEN MUSER JEANNE SHERIDAN
Circulation Manager - - - - -	KATHLEEN KIENSTRA

Back Row: Margie O'Brien, Kathy Lambrechts, Pam Hoffman, Peggy Jostedt.  
Middle Row: Catherine Fleming, Mary Gebhart, Bette Macken, Marie Gillespie, Mary Riffel. Front Row: Peggy O'Neill, Marilyn Morheuser, Betty Convy, Kathleen Kienstra, Margaret Nickolaus.

Dorothy Van Hoogstrate, Dorothy Riffel, Peggy Jones, Virginia Knese, Mary Ferris, Pat Kenoyer, Joan Lubeley, Pat Manion, Ann Rita Willard.



# The Loretine

*Editor* - - - - - MARY PAT ALMSTEDT  
*Assistant Editor* - - - ANN RITA WILLARD  
*Associate Editors* - - { DOROTHY VAN HOOGSTRATE  
 { MARGIE O'BRIEN  
*Circulation Editors* - { NANCY WRIGHT  
 { MARGARET NICKOLAUS  
*Business Editor* - - - CLARE HOFFMEISTER



Mary Pat Almstedt, Clare Hoffmeister.



Seated: Catherine Fleming, Dorothy Riffel, Bette Walsh, Mary Pat Almstedt. Standing: Margaret Nickolaus, Ann Rita Willard, Marguerite Milford, Clare Hoffmeister, Dorothy Van Hoogstrate, Margie O'Brien.

New cuts and covers get our literary publication off to a flying start . . . Issues dedicated to Archbishop Glennon, Alumnae President, Mary Dooling . . . Diversity of current, up-to-the-minute articles . . . Father Furfey's Forum . . . Poetry of Thomas Butler Feeney, S.J. . . . Dis-

cussion of Catholic attitude toward pressing world problems . . . Sinarchism . . . Labor Unions . . . Meetings to talk over material . . . Deadlines to meet . . . First drafts . . . Dummies . . . Proofreading . . . The thrill as the editor opens the first copy.



Marguerite

# International Relations Club

The I.R.C. is associated with the Carnegie Endowment for International Peace . . . Chooses for its theme this year Postwar Attitudes of Nations . . . Guests — Mr. William M. Guthrie, British Vice-Consul in St. Louis . . . Msgr. John P. Cody, Chancellor of the Archdiocese, speaking on the Vatican . . . Members entertained at formal dinner given by Dr. and Mrs. Donovan . . . Open meeting in April followed by entertainment and refreshments . . . Members participate in various panel discussions . . . Represent Belgium at mock San Francisco Conference held at Washington University.



Ann Rita Willard, Dr. George F. Donovan.

*President* - - - - - ANN RITA WILLARD  
*Vice-President* - - - - MARGUERITE MILFORD  
*Secretary-Treasurer* - - - - PEGGY JONES



Marguerite Milford, Dorothy Van Hoogstrate, Margie O'Brien, Dot Schulte, Mary C. Ferris, Carmen Melendez, Peggy Jones, Kathleen Kienstra, Catherine Murphy, Ann Rita Willard, Pat Kenoyer, Lucy Murphy.

# Noble Elements



Peggy Fay, Chris Musso, Anne Harmon Chase, Valerie Douglas.

- President - - - - PEGGY FAY  
 Vice-President - - CHRIS MUSSO  
 Secretary - ANNE HARMON CHASE  
 Treasurer - - VALERIE DOUGLAS

The Noble Elements is an alert group of thirty-five scientists . . . Purpose — to gain practical knowledge of scientific fields . . . Contact with professional people, work, surroundings . . . Lecture by Dr. James B. Goodrich of St. Louis University on futuristic topic — nylon . . . Dr. B. H. Nissen discusses brewing industry . . . Chemical quiz program makes things lively . . . Students review their summer laboratory work . . . Trips to Anheuser-Busch, Purina Mills, open to other interested students . . . Hayride and wiener roast tops off social events . . . Missouri Academy of Science meeting — sponsors papers . . . Chooses St. Albertus Magnus, who had mastered all the sciences of his time, as patron.



Mary Gebhart, Peggy Goff, Pam Hoffman, Helen Muser, Haydee Carrasquillo, Vera Deutschmann, Peggy Fay, June Zerwekh, Margie Kurz, Anne Chase, Shirley Paden, Bernice Koster, Valerie Douglas, Chris Musso, Terry Wand.

## Classical Club

President - - - - - PAT MANION  
 Vice-President - EVELYN O'SULLIVAN  
 Secretary-Treasurer—  
 MARGARET NICKOLAUS

The theme for the year is the discussion of St. Augustine and his *Confessions*. February 18, hostess for St. Louis University Classical club . . . Papers are given . . . Ten members belong to Eta Sigma Phi . . . Faculty Tea reviews year's works.

Standing: Pat Powers, Aurelia Ottersbach, Pat Kenoyer, Lena O'Neill, Ann Stull, Ruth Ottens, Mary Gebhart, Pam Hoffman, Pat Manion. Seated: Marguerite Milford, Virginia Knese, Margaret Nickolaus, Betty Convy, Peggy Fay, Doris Federer.



## Poetry Club

President - - - - - PEGGY JONES  
 Secretary-Treasurer - DOROTHY RIFFEL

The most important innovation in the Poetry Club this year is the revision of the constitution . . . Admittance of underclassmen . . . Study of poems by nuns . . . Negroes . . . Christmas verses . . . Favorite poems . . . Marian poetry . . . Members' original verses . . . Work of poetesses in *America Sings* and *The Loretine*.

First Row: Judy Biller, Mary Riffel, Peggy Jostedt, Mary Ferris. Second Row: Peggy Jones, Marguerite Milford, Dorothy Riffel, Muriel Hoogstraet, Pam Hoffman, Betty Convy. Third Row: Pat Kenoyer, Ann Rita Willard, Pat Manion.



## English Club

President - - - ANN RITA WILLARD  
 Vice-President - - - JOAN LUBELEY

The English Club activities begin with a debate in poetic form . . . Special poem written for President, "Pretty Peggy Jones," by Rev. Thomas Butler Feeney, S.J. . . . Father Guyot, guest speaker, discusses religious and literary aspects of *Joseph, the Provider*, by Thomas Mann . . . Spring meeting — election of officers for the coming year . . . Club Constitution drawn up.

Standing: Evelyn O'Sullivan, Pat Kenoyer, Judy Biller, Marcella Kommer, Dorothy Van Hoogstrate, Marilyn Morheuser, Doris Federer, Joan Lubeley. Seated: Ann Rita Willard, Margaret Nickolaus, Marie Gillespie, Dorothy Riffel, Gini Knese, Peggy Jones, Mary Ferris, Marguerite Milford.



# Sociology Club



Standing: A. Grosdidier, M. L. Berry, M. Barbazan, J. Fitzsimons, C. Musso, M. Conboy, K. Wheeler, D. Riffel, M. Harrison. Seated: J. Willard, I. Zeis, P. Lowey, M. Costa, P. Jostedt, R. M. Reid, K. Blomes, P. Manion, P. Powers, D. Van Hoogstrate, M. Letzig.



I. Zeis, P. Lowey, J. Fitzsimons.



Standing: J. Harrigan, D. Van Hoogstrate, P. Lowey, I. Zeis, M. Kommer, B. Macken, P. Manion, A. Grosdidier, J. Willard, M. Costa, A. M. Alsobrook, D. Riffel, G. Mabry. Seated: P. Tyler, J. Fitzsimons, P. O'Neill, K. Wheeler, M. Barbazan, V. Michel.

*President* - - - - - PEGGY LOWEY  
*Secretary* - - - - - JANE FITZSIMONS  
*Treasurer* - - - - - IRENE ZEIS

The Sociology students have inaugurated a club under the direction of Sister M. Aubert. Purpose: to give more varied fields of activity and knowledge . . . Plans began last spring . . . Officers elected . . . Ideas for constitution . . . tentative activities.

Year of 1944-45 . . . Large membership . . . Meeting to develop plans for club . . . First undertaking—helping needy at Christmas . . . Bank on classroom desk . . . Each girl contributes potatoes, canned goods, etc. . . . Pack and decorate baskets.

Intercollegiate Club gets under way . . . Peggy Lowey, vice-president . . . Fontbonne has meeting . . . Members from Webster's Club give papers . . . Subject: What To Do With Germany After the War . . . Webster hostess to discuss constitution.

Dr. Hampton, Negro physician, speaks at spring meeting . . . Impresses audience . . . Arouses discussion . . . Very favorable reactions.

Ready for its second year!

# Spanish Club

President - - - - - RUTH MOUNT  
 Secretary - - - - - BETTY LOU RUPRECHT  
 Treasurer - - - - - JEAN KIENSTRA

Under the patronage of Our Lady of Guadalupe, the club stimulates interest in the language, customs and peoples of Spanish-speaking countries . . . Pan-American Day assembly . . . Senor de la Rosa, good-will Ambassador from Mexico . . . Introduction of new club song, "Rojo, Blanco y Azul" . . . Members entertained at a Spanish fiesta.

First Row: V. Michel, I. Vatterott, B. Luechtefeld, E. Hartmann, B. J. Wolff, R. Fields, N. J. Hardin, M. Harrison, P. Jostedt, J. Blottman, P. Nolan.  
 Second Row: R. Couch, J. Kienstra, B. L. Ruprecht, R. M. Mount, K. Blomes. Third Row: J. Herman, R. Weismantel, M. Milford, V. Jokerst, B. Cooper, P. Filstead, M. C. Kirchner, M. Bannon, C. Cocina, R. Missel, M. Bolanos, G. Mabry, H. Carrasquillo. Back Row: P. Welsh, H. Tong, R. Strubel, M. Letzig, J. Biller, A. Luckey, J. Higgins, M. L. Berry, A. Luckinbill.



# Freshman Board

One of the nicest, and perhaps the most outstanding, changes that have taken place at Webster this year has been the election of Freshmen to all major school, sodality, and class offices for a period of two weeks. Elections . . . Formal installation . . . Meetings conducted efficiently . . . Impressive Living Rosary at Sodality . . . Red Room clean-up campaign . . . Campusless interlude . . . Teamwork culminates in triumphant success.



Standing: J. O'Neill, J. Sage, A. Koch. Seated: L. Hotto, J. Frerker, R. Burke, D. Iseman, L. McGowan, M. L. Kiel, K. Mulligan.  
 First Row: P. Abbott, P. Goff, J. Breville, J. Higgins, M. Bannon, H. Carrisquillo. Second Row: J. Grennan, C. Johnson, Marg. Hayes, B. Fields, P. Clancy, D. Gaines. Third Row: L. Kester, C. Kester, J. Donnewald, P. Welsh, R. Naef.

*Sodality Prefect* - - - - CAROLYN JOHNSON

*Student Government President*—  
 JEANNE HIGGINS

*Hall President* - - - - - JEAN FRERKER



Jeanne Higgins.

# Dramatics



## *The Cradle Song*

Jean Sinclair, Jean Breville, Jean Wright, Virginia Rosenthal, Barbara Leuchtefeld, Marcella Bannon, Jeanne Higgins, Tirzah Epperson, Muriel Hoogstraet, Pat Walsh, Pat Holliger, Jean Wilson.

## *Catholic Students' Mission Crusade*



Marie Gillespie, Jeanne Geoffroy, Gerry Maguire, Ann Murray, Bette Macken, Audrey Koch, Barbara Hanlon, Rosemary Weismantel, Louise Berney, Mary Catherine Sheahan.



Marie Gillespie, Bette Macken, President.



Mary Grace Kane.



Bernice Koster, Peggy O'Neill, Joan Harrigan, Margaret Letzig, Betty Lou Coffey, Chris Musso.

## Bond Booth

Chairman - - - - - MARY GRACE KANE

Committee - { SHIRLEY PADEN  
 TERRY WAND  
 MARY CATHERINE McDONOUGH

The goal of this committee is to top last year's quota of \$300,000 . . . Activity three years old . . . First year . . . Goal—\$75,000 . . . Total reached \$113,000 . . . Pursuit plane purchased . . . Second year . . . Goal oversubscribed again . . . Webster complimented by State officer in charge of bond drive.

This year . . . Freshman skit in Student Government Association meeting . . . Inauguration of Freshman Week's work . . . Their goal exceeded . . . Junior class skit . . . Bond reports to climax drive.

## Co-op

Co-op officers study the fundamental principles before the store actually opens for business . . . Each member pledges herself to say a "Memorare" for its success . . . New decorations, homelike atmosphere . . . November Sodality assembly features a skit advertising products to be sold in the store . . . So interesting that over half the Webster girls purchase shares . . . Sells everything from knit animals to popular brands of cosmetics.

## House Committee

*President* - - - - - JUDY BILLER  
*Vice-President* - - - KATHLEEN KIENSTRA  
*Secretary* - - - - - CHRIS MUSSO  
*Treasurer* - - - - - JEAN BLOTTMAN  
*Spiritual Chairman* - - - - PAT CLANCY

The Committee is headed by the Hall President, and made up of a representative from each class . . . Weekly meetings to discuss boarder's problems and activities . . . Sponsors Lenten candy drive . . . Parties . . . Hallowe'en . . . Christmas . . . Valentine's Day . . . Maintains order in Loretto Hall.



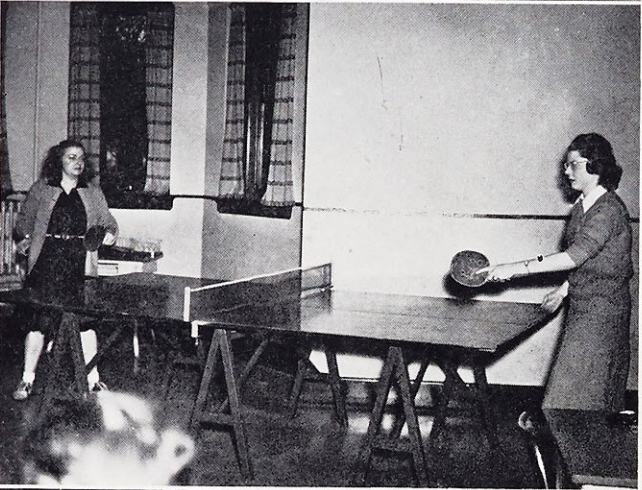
Kathleen Kienstra, Judy Biller, Jean Blottman, Chris Musso, Pat Clancy.

## Who's Who



Betty Marie Schweitzer, Judy Biller, Marilyn Morheuser, Marie Vlatkovich, Catherine Fleming, Margaret Mary Haring, Mary Grace Kane, Kathy Lambrechts, Margaret Nickolaus.

# Athletic Association



Ruth Ottens, Gertrude Mabry, Betty Cooper, Betty Marie Schweitzer,  
 Toddy Barbazan, Pat Tyler,  
 Jean Frerker, Virginia Rosenthal, Ione Vatterott, Virginia Knese.

President - - - - - RUTH OTTENS  
 Vice-President - - - - - TERRY WAND  
 Secretary - - - - - JEAN BLOTTMAN  
 Treasurer - - - - - SHIRLEY LAMPMAN



Betty Jo Duisen, Rosemary Burke, Ruth Ottens, Mary Alice Engler.

The always active Athletic Association sponsored an increased variety of activities . . . Cheer leaders chosen . . . Pep rallies preceding basketball games . . . Lively Varsity tilts . . . Last-minute baskets . . . Victory and defeat . . . Laboratory for sportsmanship . . . Intramural games . . . Ping-pong tournament announced . . . Games finally played off . . . Modern dancing introduced . . . Groans from Freshmen . . . Beautiful demonstration in Musicale . . . 300-Club formed . . . Bowling every Tuesday afternoon . . . Goal—A perfect score . . . Spring ushers in softball . . . badminton . . . archery . . . tennis . . . Supervising High School Play Day . . . Participating in our own . . . Volleyball . . . softball . . . races . . . original skits by each class . . . The Banquet at last . . . awards . . . Blankets for the highest number of points.

Standing: Helen Tong, Jean Blottman, Ruth Ottens, Shirley Lampman, Joan Harrigan. Seated: Pat Tyler, Terry Wand, Kay Wheeler.

Ruth Ottens, Dot Gaines, Betty Lou Coffey, Jean Blottman, Pat Tyler, Gertrude Mabry, Katie Blomes, Peggy Goff, Bernadine Feeney, Betty Cooper.





Meeting our dates

# Christmas Tales



Winter Wonderland.



"I'll Be Home for Christmas."

Buf  
... M  
-Mis  
Club  
meetin  
ments  
cers a



Seated, F  
V. Knease  
Second R  
Reid, L.  
G. Magu  
M. Donn  
M. Ferris

## Dietetics Club

Buffet supper honors the incoming members . . . Meetings held quarterly . . . Guest speaker —Miss Virginia Moeller, home economist . . . Club paper, *Calorie Counter*, distributed at each meeting . . . 100 per cent internship appointments revealed in the *Web* . . . Election of officers at Farewell Banquet for Senior Dietitians.



*President* - - - - MARY ANN HENCKLER  
*Vice-President* - - - - - JEAN MORGAN  
*Secretary* - - - - - TRUDY BERNARD  
*Treasurer* - - - - MARCELLE BARBAZON  
*Editor* - - - - - SHIRLEY LAMPMAN  
*Assistant Editor* - - - - IONE VATTEROTT



## French Club

*President* - - - - - VIRGINIA KNESE  
*Secretary-Treasurer* - - - MARGIE O'BRIEN

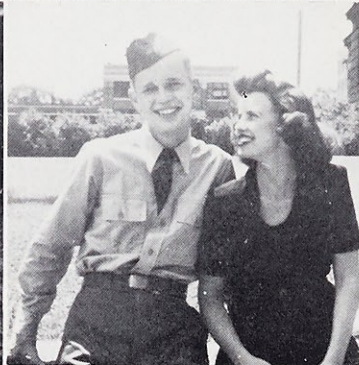
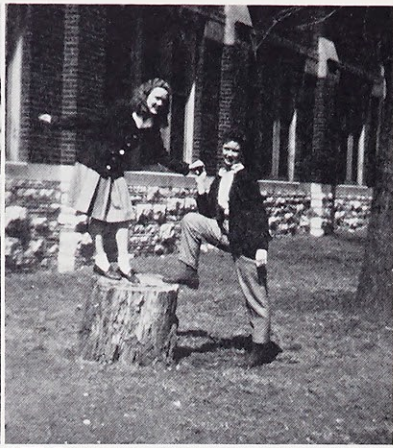
The year begins with election of officers and discussion of plans for the future . . . Talk on France by Doctor Donovan . . . Literature for Scott Field . . . Dance with French cadets in April.



## Orchestra

The Orchestra . . . Composed of the musical talent of the school . . . a tradition at Monday assemblies . . . "Star-Spangled Banner" . . . "Notre Dame Victory March" . . . Tunes for any occasion . . . Under the able direction of Marie Donnelly . . . Weekly practices keep members on their toes.

Seated, First Row: M. Nickolaus, J. Fitzsimons, P. Powers, J. Geoffroy, V. Knese, M. O'Brien, L. Ludwig, T. Bernard, G. Mercier, P. Rousseau. Second Row: D. Gaines, M. G. Kane, B. Hanlon, A. Dintelmann, M. J. Reid, L. Murphy, M. Moosey, C. Melendez. Standing: B. Walsh, G. Maguire, P. Jones, M. Gebhart, A. Koch, B. M. Schweitzer, M. Panneton.  
 M. Donnelly, J. Morgan, R. M. Missel, J. Harrigan, C. A. Cocina, M. Ferris, J. Blottman, M. Hayes, K. Wheeler, C. Murphy, P. Harttman, K. Blomes. At Piano: I. Robinson.



Fun in sun.

On top the spreading chestnut stump.

Wayside Waifs.

Vacation daze.

Furlong.

Dot and Jimmy.

Fourth year frolics.

Smile, please.

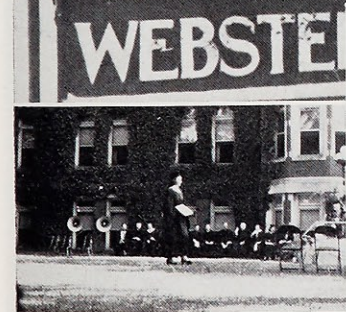
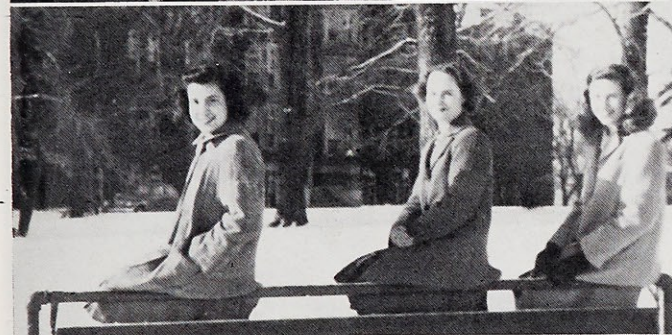
Together.

Double date.

Summertime.

After dinner.

M. C.



Four frosh.

Watch the birdie.

"Mel"-low mood.

Schooldays.

Table talk.

Carefree.

Snowbirds.

Big sis—little sis.

Introduce us.

The great moment.

Lineup.

Campus cutups.

Gruesome fivesome.

On the banks of the Wabash?

French friends.

Up in the air.

Isn't he cute?

There they are again.

Free period.

Time off.

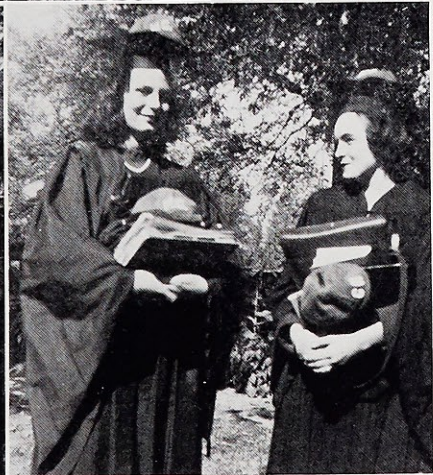
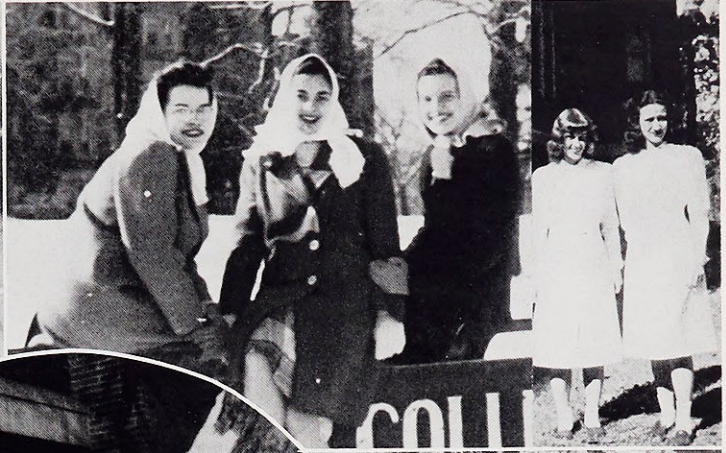
Such ambition.

Southern belles.

Bound for Old O.

White tie and tails.





Picnic picture.

Babushkas.

Demure dietitians.

Tintype.

Editor at ease.

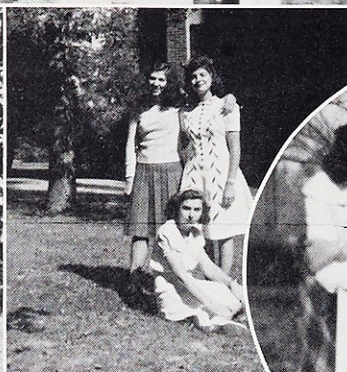
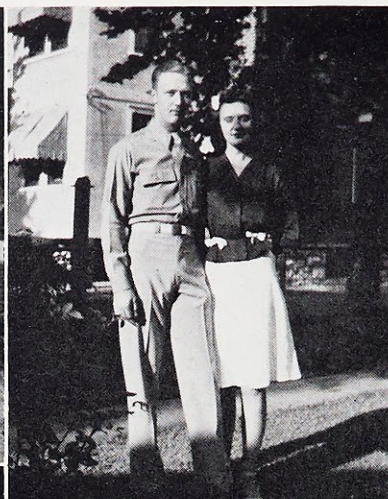
Easter parade.

Moe, Sr.

Persecution.

Why so happy?

Southerner, sailor, snow.



Jam session.

Queens 'n things.

Plaid parade.

Idyll Hour

Relaxing.

Chair-back charm.

Swingin' on the sign.

Photogenic.

Another chair, please.

You'll catch cold.

Ready to go.

What a climate!

Mission accomplished.

Webster rites.

Rogues' gallery.

The first lady laughs.

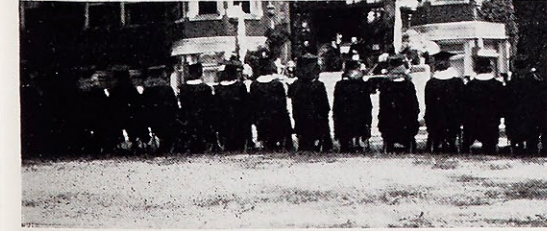
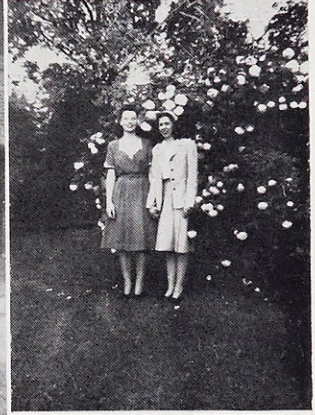
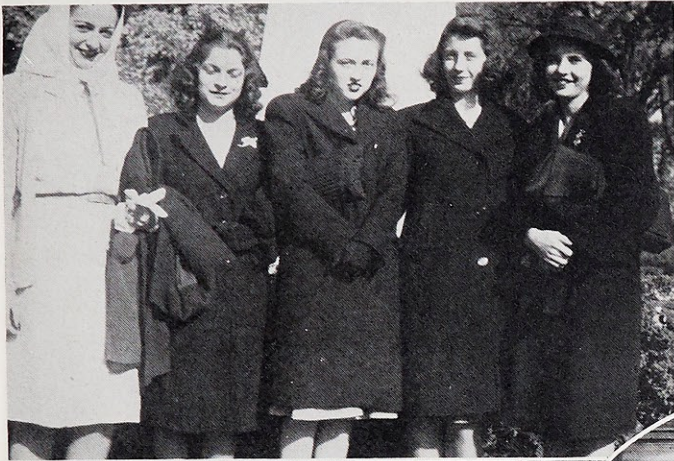
Studying hard.

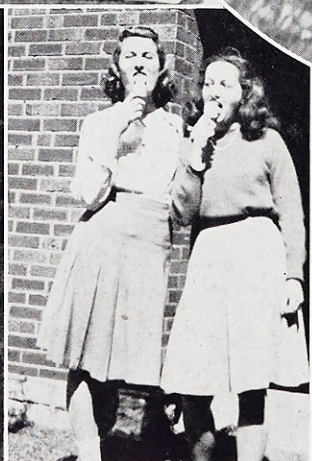
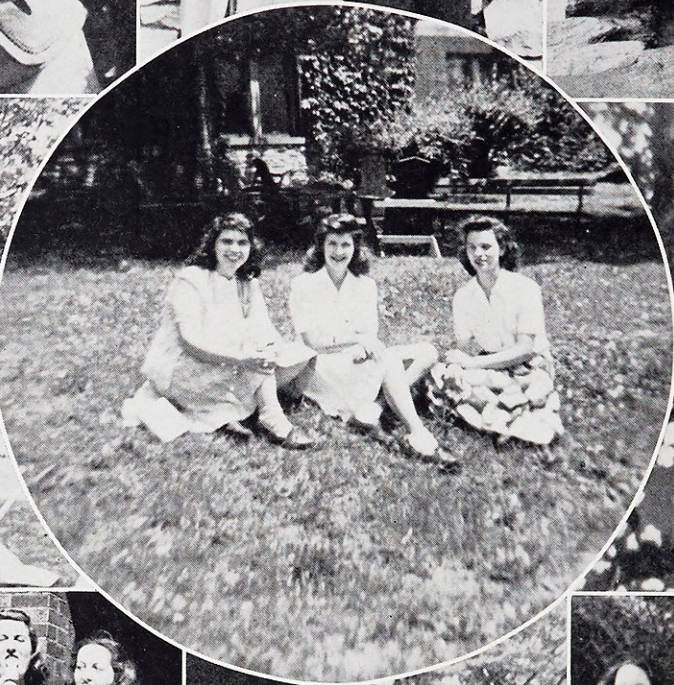
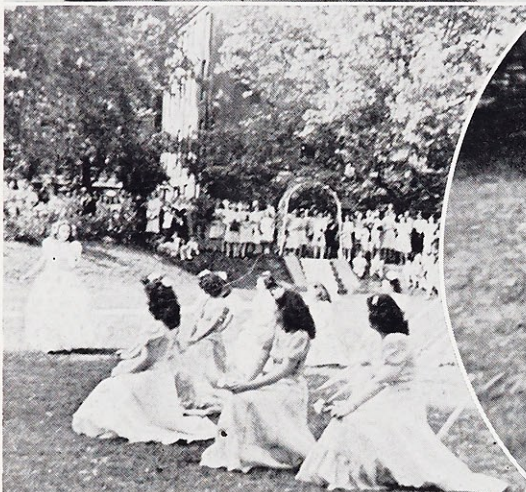
Snowballs and sophs.

Caught in the act.

Intermission.

Shades of noon hour.





Goodbye for now.

Gini and Don.

Marooned.

Command Performance.

Lovely lasses.

Off guard.

Smilin' through.

Good?

In retrospect.

1, 2, 3, click.



Webster visits Notre Dame.

# *Autographs*

This space is mine  
Wherein to write;  
Remember me  
When out of sight.

All I ask is one small spot  
In which to write, "Forget me not."

Remember me when this you see,  
And think of one who thinks of thee.