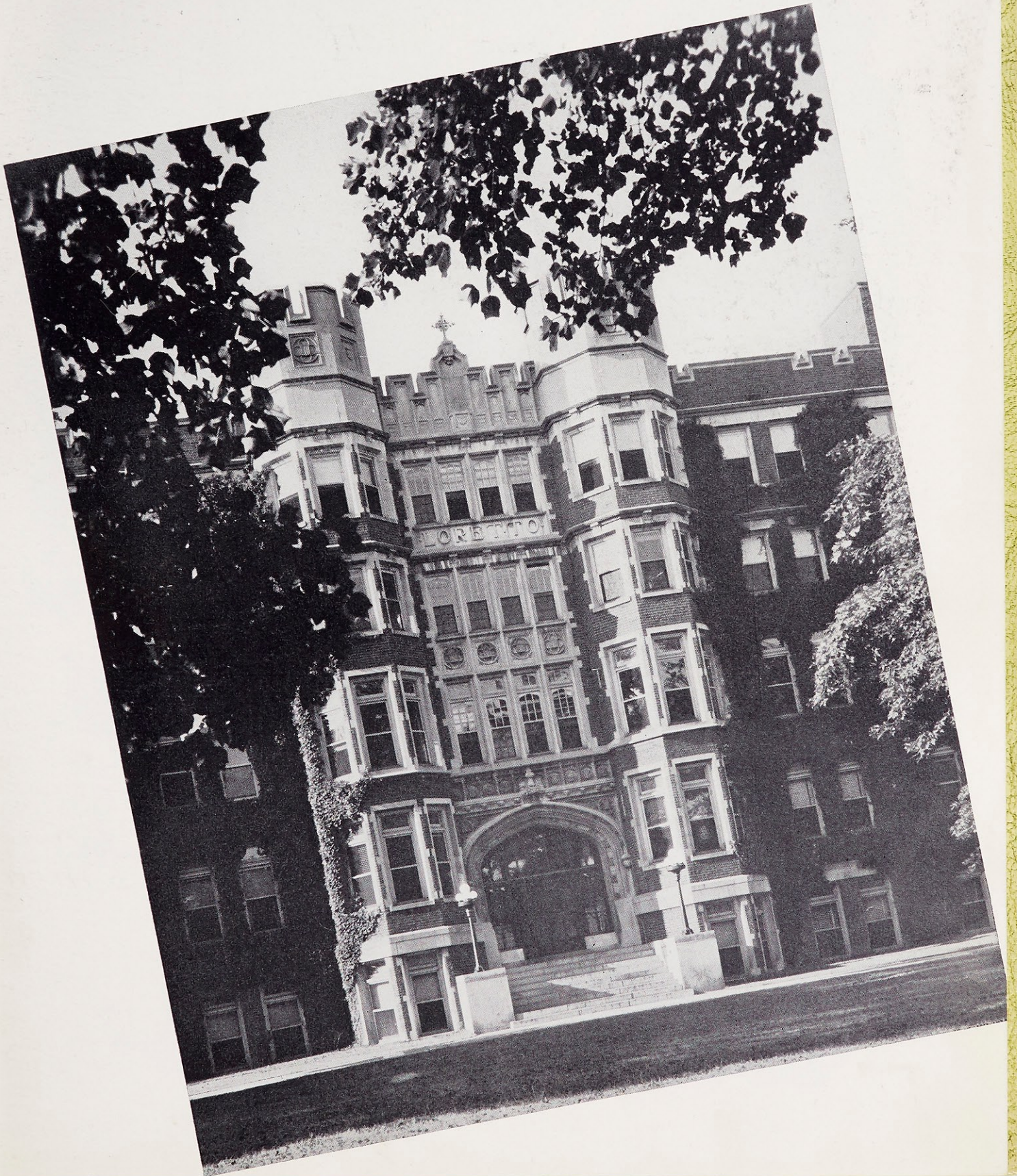


Lauretanum
1947



Tell Me Why the Stars Do Shine

Tell Me Why The Ivy Twine



ine



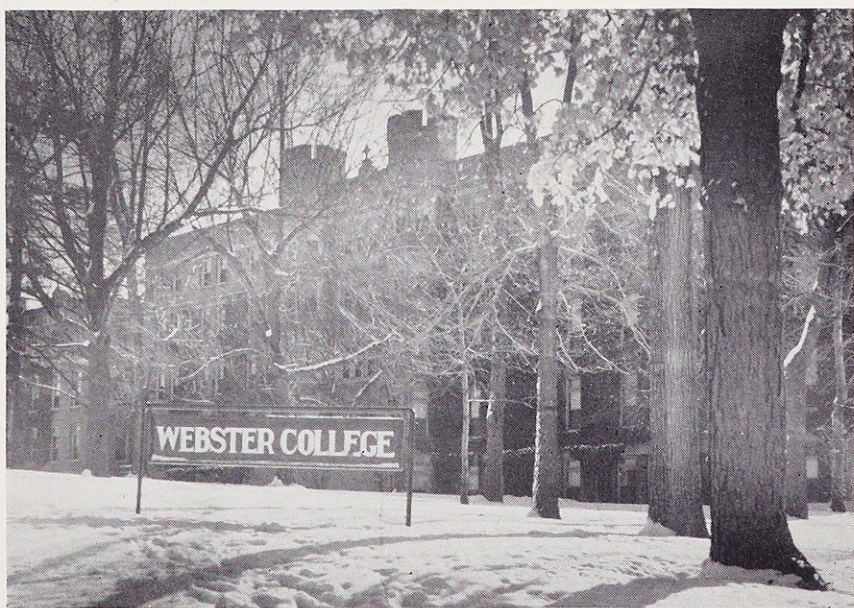
Tell Me Why The Sky's So Blue

Tell Me

Dear Webster

Just Why

I Love You



*To George F. Donovan, Ph.D., President
of Webster College, an outstanding Cath-
olic layman, an untiring civic leader, a real
Catholic educator, we affectionately dedi-
cate the Lauretanum of nineteen hundred
forty-seven.*

D e d i c a t i o n

n



GEORGE F. DONOVAN, PH.D.
President of Webster College



Our Seniors . . .

Stars twinkling and shining have smiled good fortune on our forty lovable lassies as they walked 'neath Webster's skies for four happy years. As new recruits in '43-'44, they tortured the experienced troops in the "Inner Sanctum" of Hallowe'en and locked their sisters in the "County Jail" of Kerry Patch to honor old St. Pat. They munched on peanuts and popcorn and cracker-jack with the Seniors in '45. We wandered in their "Winter Wonderland" and got lost in the beauty of their "Moon Mist" as Junior year flew by. Vigils started during comprehensives will be kept as they venture on life's way.

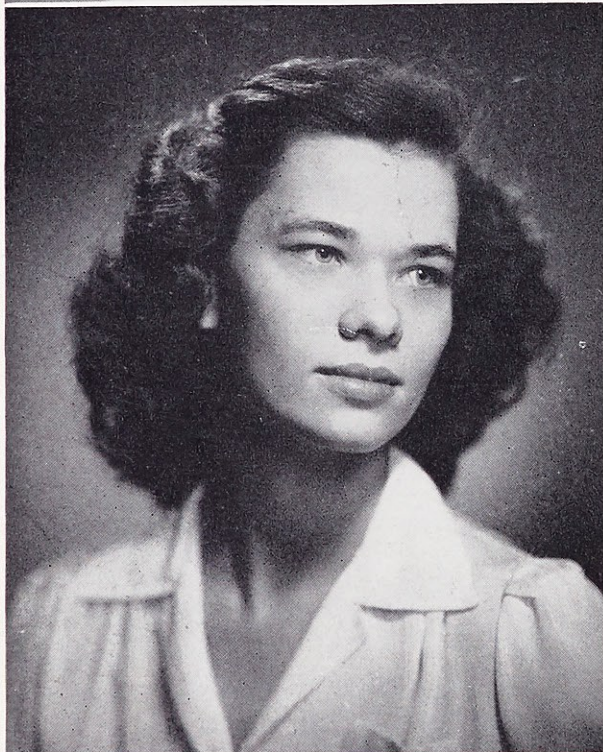


Gertrude Bernard

QUEBEC, CANADA

B.S. in Dietetics

Canada acclaims its "belle jeune fille"; Webster salutes her Queen of the May. This Mademoiselle sent to us by our neighbors to the North has walked straight into every girl's heart. Her flair for art, her feminine frocks, her faithful friendship, that's Trudy, "toujours."



Jean Anne Blottman

KANSAS CITY, MISSOURI

A.B. in English

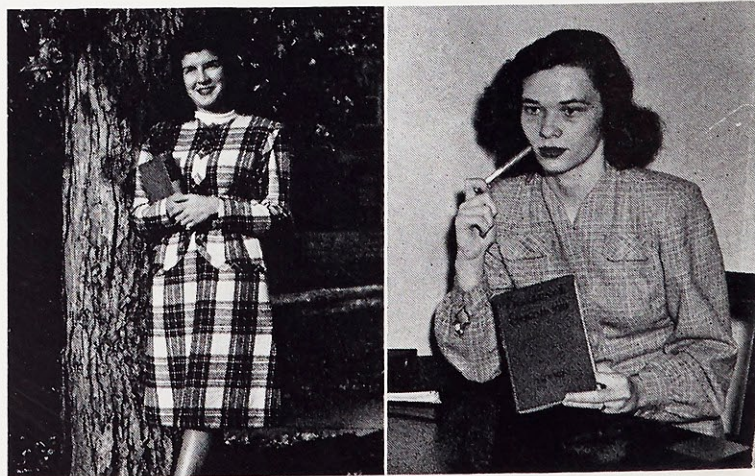
Meet Jean, our model "Mother". Never flustered by her frantic flock, she ambles through days packed with practice teaching, bolstering the basketeers, and keyboard banter from Bach to boogie. "Sincerity flavored with wistful charm," reads the recipe for our Lady of Loretto Hall.

TRUDY

Sodality '44, '45, '46, '47
 Laetitanum '46
 Mademoiselle College Board '46
 May Maid '45
 May Queen '46
 International Relations Club '45, '46, '47, Vice-President, '46
 Dietetics Club '44, '45, '46, '47, Secretary, '45, Treasurer, '47
 French Club '44, '45, '46, '47

JEAN

Sodality '44, '45, '46, '47, Vice-Prefect '46
 Student Government Board '47
 Hall President '47, Faculty Representative '47
 Who's Who '47
 Athletic Association '44, '45, '46, '47, Secretary '45
 Varsity '44, '45, '46, '47, Captain '47
 House Committee '44, '45, '47
 Web Staff '46

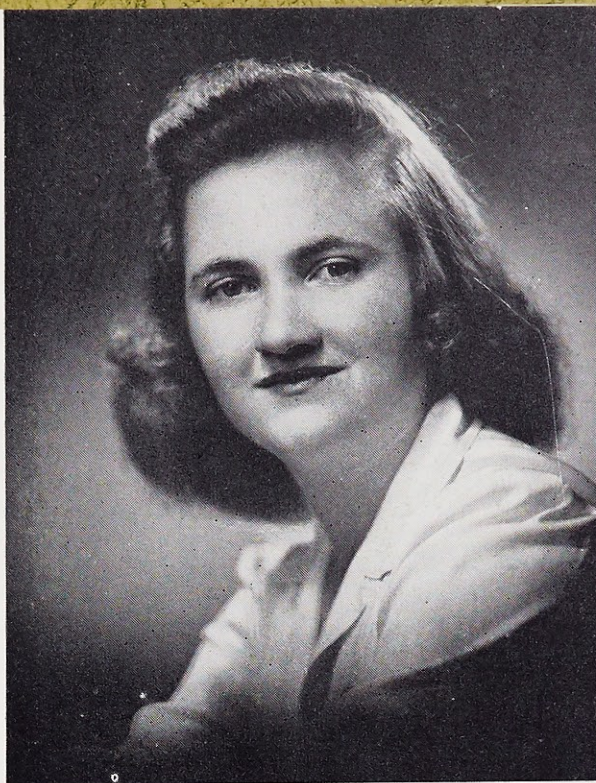


Rosemary Burns

NORMANDY, MISSOURI

B.S. in Dietetics

We nominate Rosemary as the record-holder for the most assembly announcements for the year '45-'46, but she met the *Lauretanum* bill collectors with a smile. Her "dough-mess-ticity" carries over to the Diet Lab. She clicks with her taps and with her pals.



Margaret Ellen Casey

ST. LOUIS, MISSOURI

A.B. in French

The collegiate cap and gown rest well on Peggy's pretty head and shoulders. A trilingual special, a big-leaguer in the academic line-up is "Casey at the bat." Third base was Laval but she stole home to get her Webster degree and pin.



ROSEMARY

Sodality '44, '45, '46, '47
Class Vice-President '44
Dietetics Club '44, '45, '46, '47, President '47
Lauretanum Staff '46
French Club '44, '45
Classical Club '46
Musical '45, '46, '47
Athletic Association '44, '45, '46, '47

PEGGY

Sodality '44, '45, '47
Eta Sigma Phi '44, '45
Classical Club '45
Laval University '46
French Club '44, '45, '47
Secretary-Treasurer '47





Anne Harmon Chase

KANSAS CITY, MISSOURI

A.B. in Spanish

Her "Harmon-y" of spirit led Anne up the ladder from Freshman president, to Sophomore quiz-kid, to Junior *Lauretanum* leader to her Seniors' choice. Webster wailed her hair-cuts, braved her beast, to collect her crooked smiles and "chase" her impish charm.



Jacqueline Chauvin

ST. LOUIS, MISSOURI

A.B. in Spanish

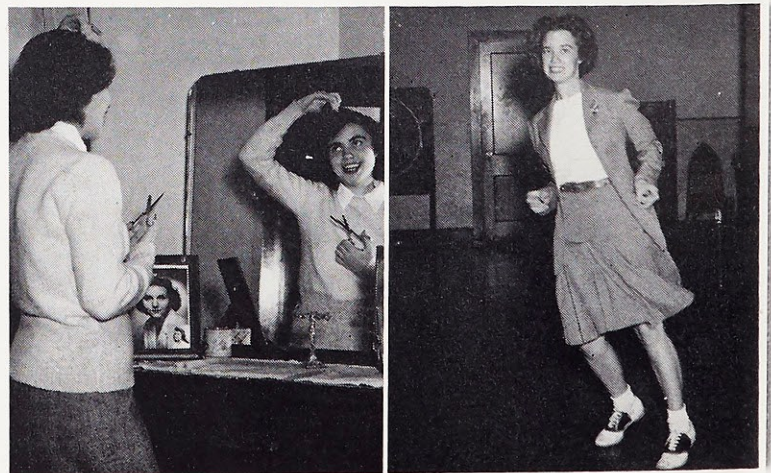
A collector of "Hummel's" cards, that is, Jacque broke the Senior jinx. The party planners plague her for her jitterbugging specialty; the Webster families frolicked in her farmyard in November. Intelligent, bubbling, popular, Jacque, who could ask for anything more?

HARMON

Sodality '44, '45, '46, '47
 Class President '44, '47
 Vice-President, Student Government Association '46
 Student Government Board, '44, '46, '47, Faculty Representative '46
Lauretanum Editor '46
Who's Who '46
 N. F. C. C. S., Senior Delegate, '47, Vice-President '47
 Chairman Mid-Winter Promenade '47

JACQUE

Sodality '44, '45, '46, '47
 Web Staff '44, '47
 International Relations Club '46, '47
 Spanish Club '44, '45, '46, '47, President '46
 Sociology Club '44, '45
 Athletic Association '44, '45, '46, '47
 Nominating Committee '46
 Chairman Big Sister Party '47



Elizabeth Jane Convy

MOBILE, ALABAMA

A. B. in English

Peak of Poetry in the portals of W. C. is our Alabama version of a Yankee "talkathon." Resorting to the prose of the "hoi polloi," she became chief barker for Hetz's big night. Animated, vivacious "Con" could well borrow the tarnished halo of the "Little Angel" she created for us to love.

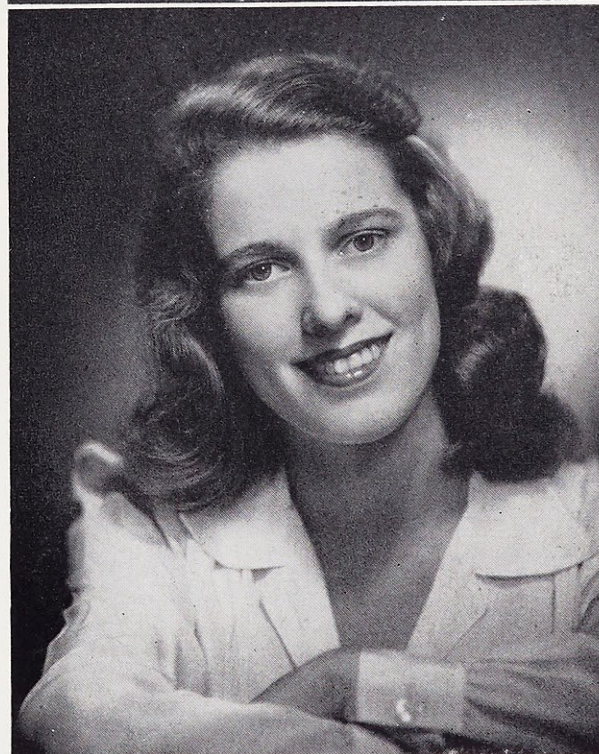


Betty Ann Cooper

ST. LOUIS, MISSOURI

A.B. in Sociology

A four point "A" goes to Betty for the athletics, activities, achievements, and ability in which she abounds. With her salon smartness she might have stepped out of Saks Fifth Avenue, but this practical package "seams her dreams." A charming hostess and a cheerful worker, "Coop" qualifies as a competent leader.

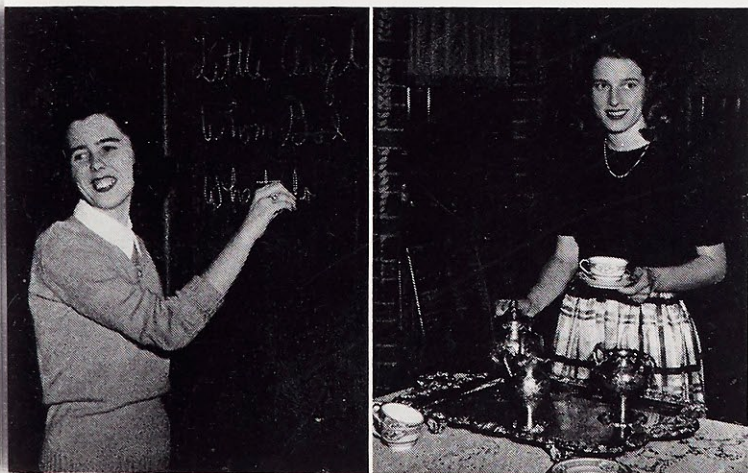


BETTY

Sodality '44, '45, '46, '47
Student Spiritual Council '44, '45, '46
Student Government Board '47
Senior Representative '47
Who's Who '47
Loretine Associate Editor '46
Assistant Editor '47
Lauretanum Associate Editor '46
Poetry Club '45, '47, President '46
Classical Club '44, '45, '47, Secretary-treasurer '46

BETTY

Sodality '44, '45, '46, '47
Student Government Board '46, '47
Secretary '47
Who's Who '47
Class Secretary '45
Chairman of Fall Prom '46
Athletic Association '44, '45, '46, '47
Vice-President '46, President '47
Varsity '45, '46, '47





Rosalie Dunn

KANSAS CITY, MISSOURI

Biology

Here's a girl who's frightened of mice but not of roaches. A pretty piece of apparatus for any laboratory, Rosalie's on her way to be a technician. One of St. Tess' trio transferred to Webster, tops in personality is this Datin' Dunn.



Joun Elizabeth Fitzgerald

KANSAS CITY, MISSOURI

History

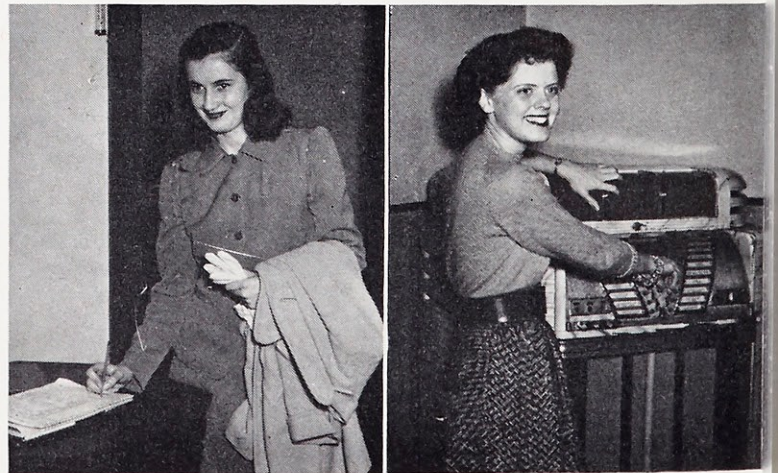
"Relatively" speaking, Joun's a whiz in history. Webster's hostess at the style show at that place—the Chase, this Kansas City miss is always clothes conscious. We catch the flight of her laughter when her Irish eyes are smiling.

ROSALIE

College of St. Teresa '44, '45
Sodality '46, '47
French Club '46
Athletic Association '46, '47
Section Club Secretary '46

JOUN

College of St. Teresa '44, '45
Sodality '46, '47
Spanish Club '46, '47
Classical Club '47
Athletic Association '46, '47

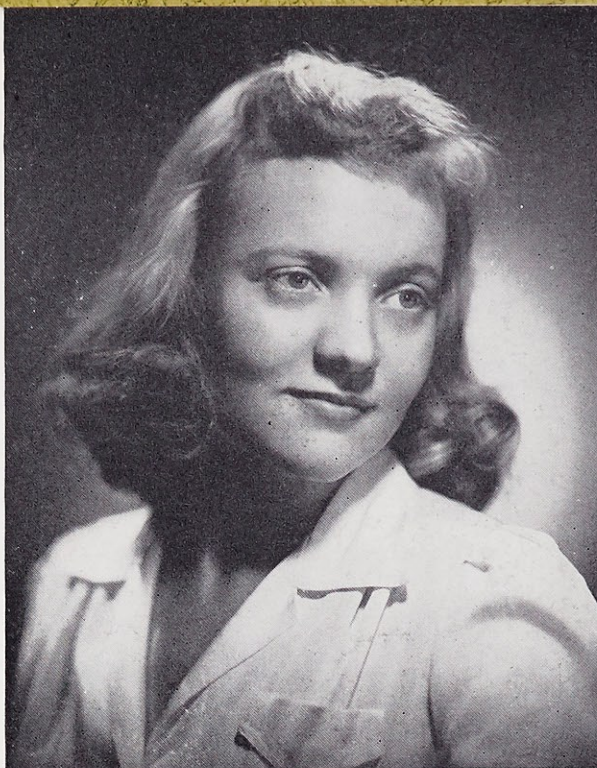


Mary Clare Geerling

PINE LAWN, MISSOURI

A.B. in English

Her "ducky" posters put the pep contest on its "Web" feet. We've frolicked in the literary meadow of her poetry in prose. This nuptial nightingale's Ave Maria's fall glittering on the white lace and orange blossoms of so many joyous Wedding Days.

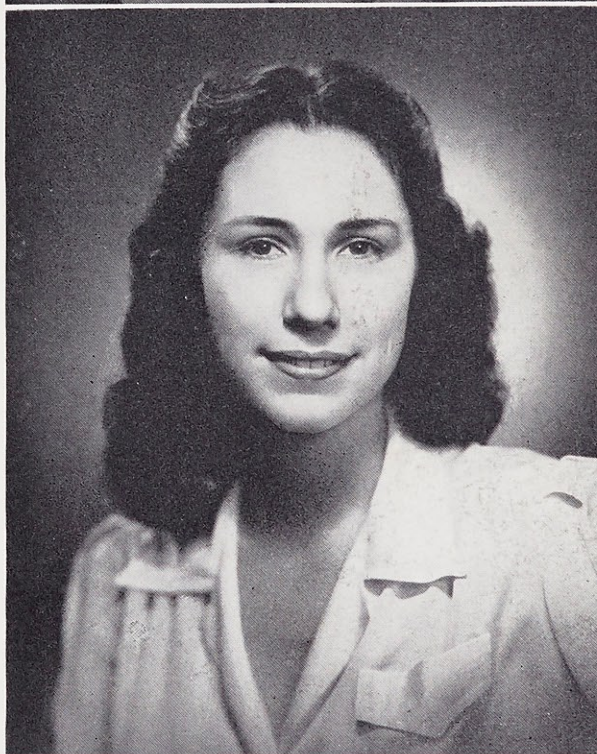


Mildred Estelle Harrison

LITTLE ROCK, ARKANSAS

A.B. in Sociology

Millie is the Arkansas Traveler who ate her way through Webster's halls. This student bureaucrat is a member of the NSO, an officer of the IRC, president of the AMA, and organizer of the UWS. She gained a "comprehensive" background for March 29th and scintillating success in sociology.

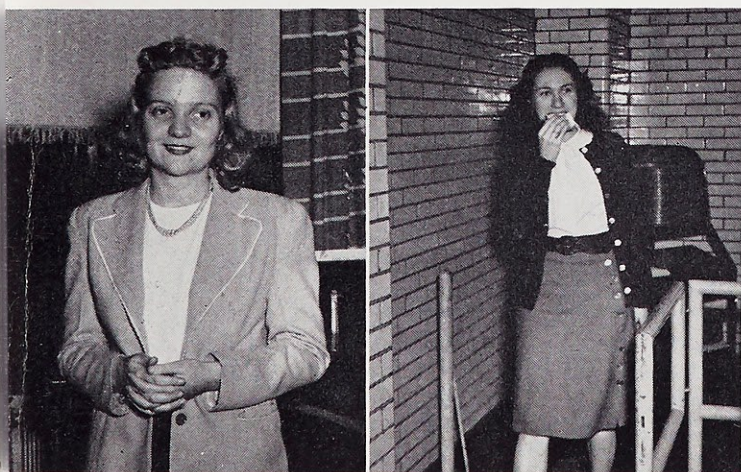


MARY CLARE

Sodality '44, '45, '46, '47
Loretine Staff '46 '47
French Club '44
English Club '46
Poetry Club '47
Classical Club '44
Athletic Association '44, '45, '46, '47
Pep Song Chairman '46

MILLIE

Sodality '44, '45, '46, '47
Student Spiritual Council '45
International Relations Club '45, '46, '47
Vice-president '47
Poetry Club '45, '46, '47, Vice-president '47
Varsity '47
Sociology Club '45, '46
Web Staff '44





Clarita Hennenfent

MONMOUTH, ILLINOIS

B.S. in Biology

A perky profile, an intriguing voice, and a rare brand of optimism that always finds a silver lining is Reedy's right combination for a first and lasting impression. Sweeter than the flowers in May; we love her—what more can we say?



Joy Herman

ST. LOUIS, MISSOURI

A.B. in French

The grace of the ballerina and the photogenic charm of the cover girl present a study in contrast to the sly, calculating character of the Show Boat villain. Picture our All-American Girl in the French Canadian setting of Laval, or rather, find Joy at home in Webster's halls.

REEDY

Sodality '44, '45, '46, '47
 Web Staff '45, '46
 S G A Budget Committee '47
 Spanish Club '44, '45
 Chemistry Club '44, '45
 Dietetics Club '47
 Athletic Association '44, '45, '46, '47
 Dramatics Club '47

JOY

Sodality '47
 Cercle Francais '44, '45, '47, President '47
 Spanish Club '44, '45, '47
 Spanish Award '45
 Dramatics Club '44
 Laval University '46
 Red Room Committee '45
 Web Staff '44, '45



Mary Elizabeth Hetznecker

EVANSTON, ILLINOIS

A.B. in Speech

With a hop, a skip, and a jump, "Hetz" had Webster "making eyes at her for"—for Musicale fame, for Mary Queen of Scots, for the legend of her closet, for an innate kind of Webster spirit that rolls away the clouds, for laughs, for songs, for a helpful hand, for being "Hetz."



Pamela Hoffman

ST. LOUIS, MISSOURI

B.S. in Chemistry

Pam's portrait is painted in chem-tone. This powerful publicity press agent and faithful caroler for the Choral Club triples as Vice-President of the National Classical Honor Fraternity. Her dependability is guaranteed not just for now—but forever.



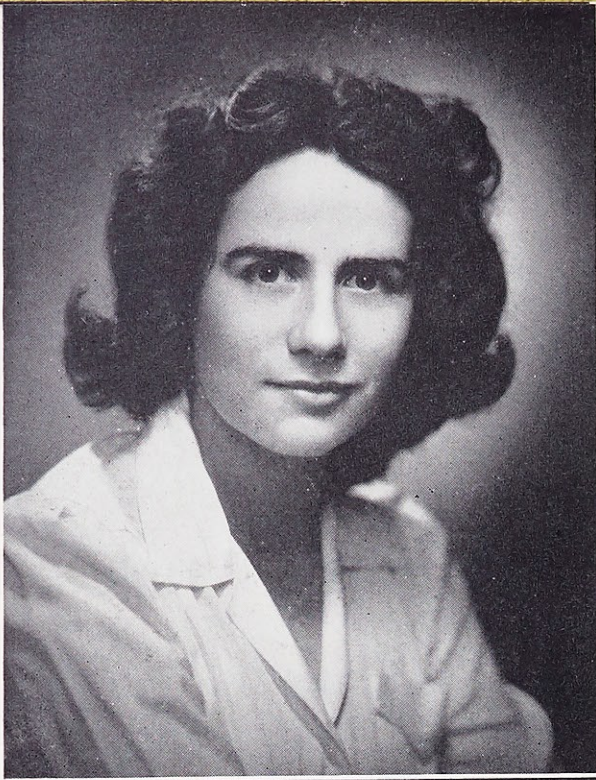
HETZ

Mount Mary College '44, '45
Sodality '46, '47
Poetry Club '46, '47
Who's Who '47
Red Room Committee '46
House Committee '47
Shakespeare '46, '47
Loretto Players '46, '47, President '47

PAM

Sodality '44, '45, '46, '47
Science Club '45
Web Staff '44, '45, '46, '47
Choral Club '45, '46, '47
Poetry Club '45, '46, '47
Eta Sigma Phi '45, Vice-President '46, '47
Project Publicity Chairman '46
Chemistry Award '45





Mary Helen Hutton

GAINESVILLE, TEXAS

A.B. in Spanish

The eyes of Texas were upon her when she headed Webster's way. She won us with her darling smile; we were so glad she stayed. For then we found her ready wit, her determination, too. And knew that Webster's eyes would follow her, successful, happy, true.



Peggy Jostedt

ST. LOUIS, MISSOURI

A.B. in English

The audience is pleased to remain standing for the first and the fourth verses of praises for Peg. Grateful prayers and calloused knees saw our field-marshal back to the front lines. But now we hear her lilting laughter and it's her Webster heart we're after—Peg o' our hearts.

MARY HELEN

Our Lady of Victory College '41, '42
Sodality '46, '47, Senior Representative '47
Spanish Club '46, '47, President '47
International Relations Club '47
Choral Club '46, '47
Athletic Association '46, '47

PEG

Sodality '44, '45, '46, '47
Student Spiritual Council '47
Student Government Board '45, '46, '47
Student Government President '47
Class President '45, '46
Chairman Campus Guide Committee '46
Web Staff '44, '45, '46, '47
Loretine Staff '46
Who's Who '46
Varsity Manager '46



Elizabeth Lattimore

WEBSTER GROVES, MISSOURI

Dietetics

Her jet black hair is truly Liz's crowning glory. This Diet Major's secret passion is to raise pedigreed dogs—the authentic variety. A welcome daily fourth floor visitor, she's the genial Friday night porter for Lois, her week-end guest.

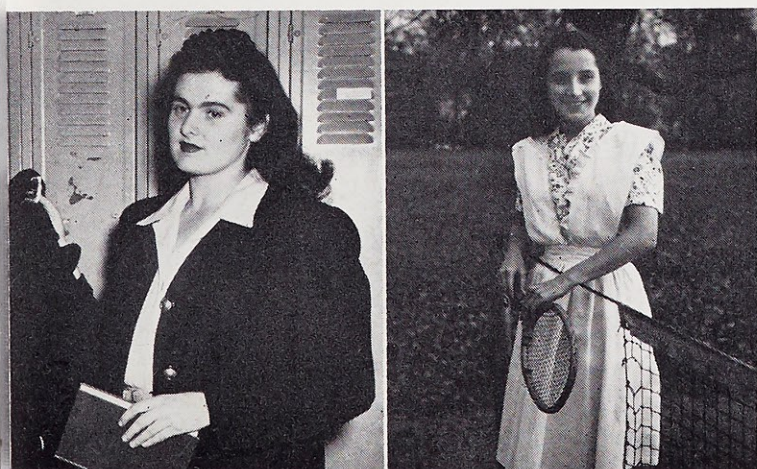
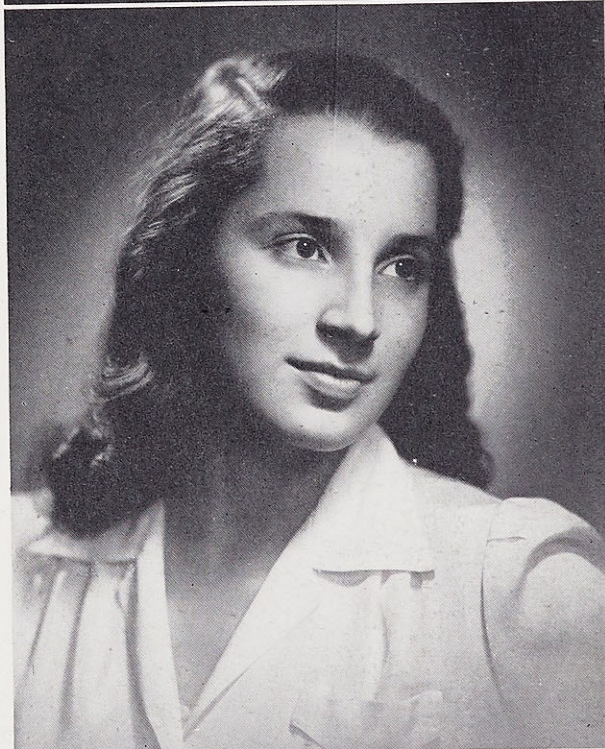


Marian LeGarde

MOUNT RANIER, MARYLAND

A.B. in English

Quiet and serene, this French beauty is a lady through and through. The unmistakable filmy black veil over the sleek, shining hair became a daily sign post at morning Mass. Perfect setting for her Madonna-like features, chiseled in ivory!



LIZ

Iowa State College '44, '45
Dietetics Club '46, '47
Athletic Association '46, '47

MARIAN

Ursuline College '43
Trinity College '44, '45
Sodality '46
Athletic Association '46
Catechism at St. Malachy's '46



Lorraine Ludwig

ST. LOUIS, MISSOURI

A.B. in French

A honey of a blond who's busy as a bee is this Honor Roll miss who leads the IRC. Collegiate charmer on the campus at two, she's a successful secretary in the office at five. Darling dimples, big blue eyes, sweet smile, luscious complexion, "that's how we've found our sweet Lorraine."



Eileen Maher

OMAHA, NEBRASKA

Dietetics

We sang "Elmer's Tune" and cried "Thumbs up," as "Mah" ripped out another row of stitches. We learned to watch for that faint flip of her finger finishing her fag. We waited patiently for Uncle P.F.'s radio voice which got lost on an air wave. Alarmist "Mah" but we luv' her.

LORRAINE

Sodality '44, '45, '46, '47
 French Club '44, '45, '46, '47, Secretary-Treasurer '45
 International Relations Club '45, '46, '47, President '47
 Athletic Association '44, '45, '46, '47
 Dramatics Club '45
 Chemistry Club '45, '46
 French Scholarship '44, '45

EILEEN

University of Omaha '44, '45
 Sodality '46, '47
 Dietetics Club '46, '47
 Classical Club '47
 Athletic Association '46, '47
 T. B. Chairman '47
 Musicales '46, '47
 Christmas Pageant '46, '47



Dorothy Anne McAvoy

JOPLIN, MISSOURI

A.B. in Sociology

Route 66 brought Dot from Joplin, Missouri, up to St. Louis. This "socially" minded miss, organizer de-luxe, and class tournament hot shot is wrapped with model smartness and tied with the ribbon of friendship. Tiny but terrific is Dodie.

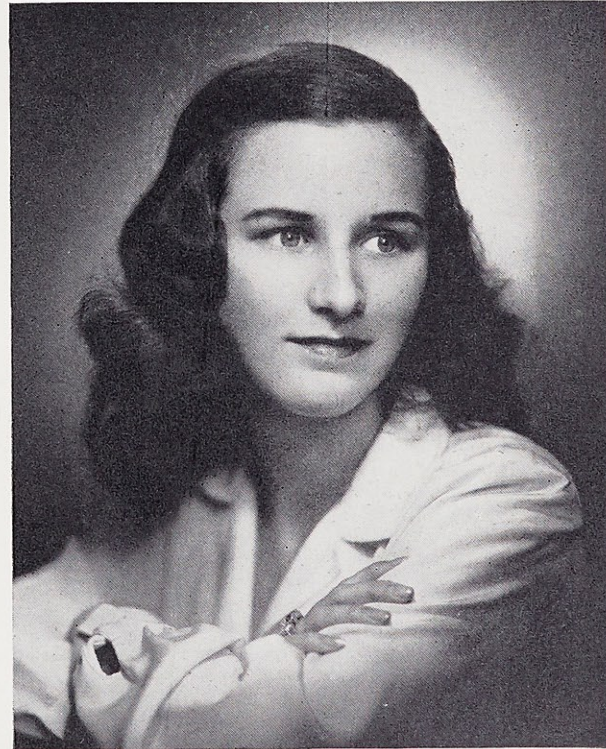


Mary Catherine McDonough

ST. LOUIS, MISSOURI

A.B. in English

Elfishly active—you know? Who could help but know our mistress of monologue, our official "M.C.", our favorite filibuster? Name a cause and here's your staunch supporter. Mac's effectively effervescent wit bubbles through her personality.

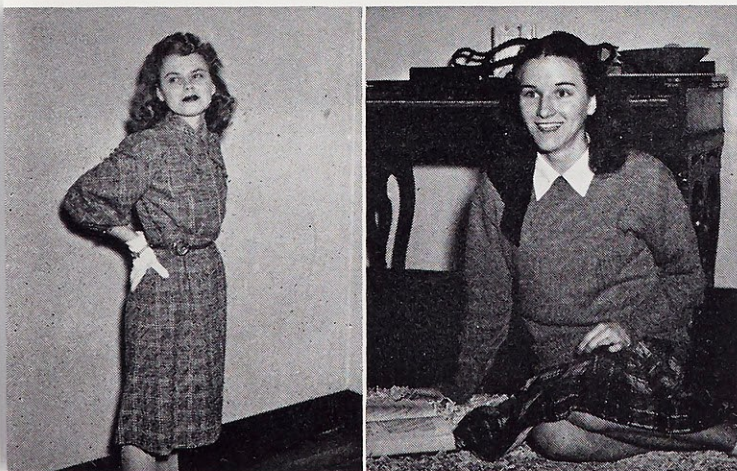


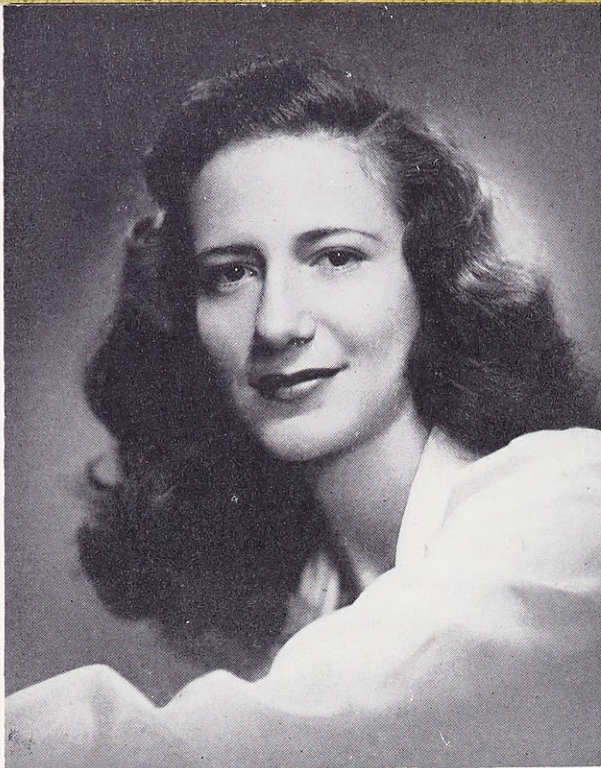
DOT

College of St. Teresa '44, '45
Sodality '46, '47
Web Staff '46, '47
Chairman Boarder's Dance '46
Dietetics Club '47
Sociology Club '46
May Maid '47

MAC

Sodality '44, '45, '46, '47
Campus Carnival Donations Chairman '46
Musical Publicity Chairman '47
Dramatic Club '46, Vice-President '47
English Club '46
International Relations Club '47
Project Planning Committee '46, '47



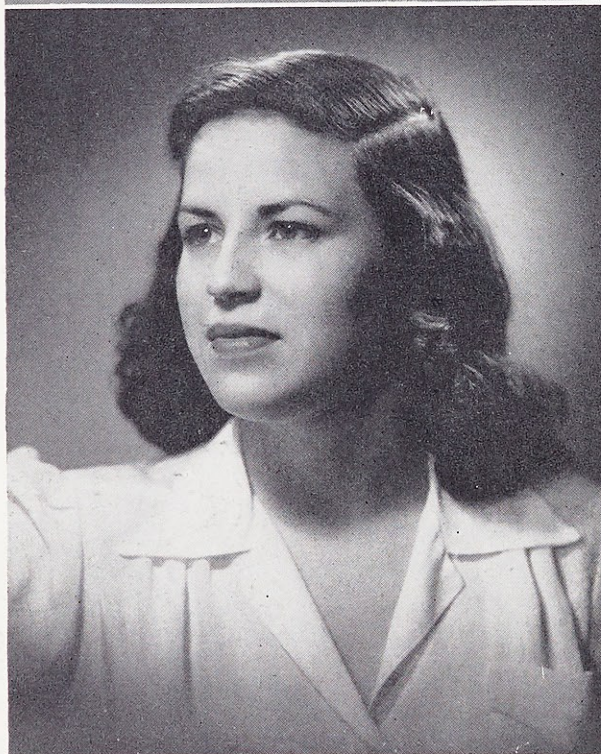


Marie Carolyn Morheuser

ST. LOUIS, MISSOURI

A.B. in Sociology

Stop! Another colossal matching hat and jacket combination. Look! Lovely hair swinging freely as she dances a mean jitterbug or leads a wild cheer. Listen! That shrill, contagious giggle climbing the musical scale. That's our little Moe, fashionable, vibrant, gay.



Patricia Ann Nolan

KANSASVILLE, WISCONSIN

A.B. in English

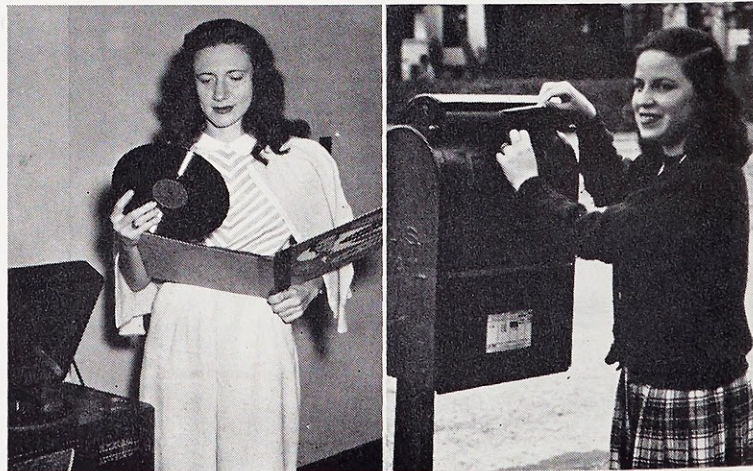
Sweet and fresh as peppermint candy is this dimpled colleen with her Irish smile and dancing eyes. Perky Patty is right hand man to the "Web's Ed." Demure, with her "Why I know you" greeting, she never meets a stranger.

MARIE

Sodality '44, '45, '46, '47
 Class Treasurer '45, '47
 Sodality Treasurer '46
 Cheerleader '46, Head Cheerleader '47
 Athletic Association Board '46
 Sociology Club '45
 French Club '44
 May Maid '47

PAT

Sodality '44, '45, '46, '47
 Web Staff '45, '46, '47
 Associate Editor '47
 S G A Budget Committee '46
 Spanish Club '44, '45, '46, '47
 Athletic Association '44, '45, '46, '47



Lois Paden

KANKAKEE, ILLINOIS

B.S. in Dietetics

The elder statesman from Kankakee is one of the favorite targets for that familiar call of "fourth for bridge." "Grandmother" to an endless chain of underclassmen, she keeps them submissive with her cure-all remedy of "Forget it." Graced with generosity is likeable Lois.



Mary Arline Powell

LITTLE ROCK, ARKANSAS

A.B. in English

Scholastically-minded with an eye for the social sway, Mary Arline keeps her berth on the Honor Roll and her niche in Friendship Alley. Her skillful sketches reflect an innate artistic ability swathed in just the tone of sophistication that individualizes this courtesy conscious Senior.

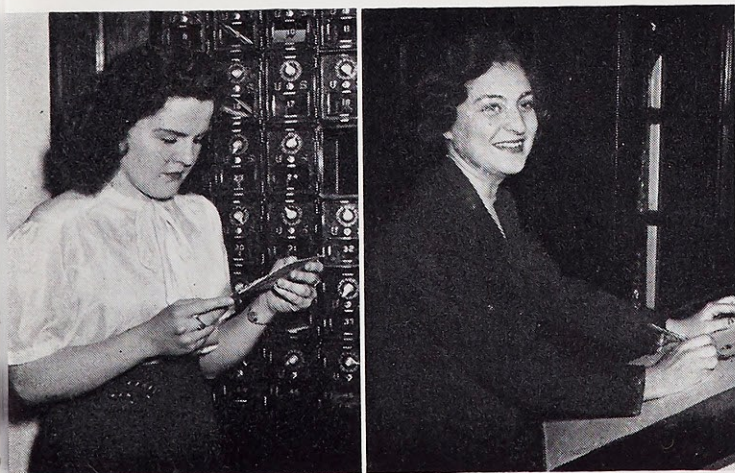


LOIS

Sodality '44, '45, '46, '47
French Club '44, '45
Dietetics Club '44, '45, '46, '47
Athletic Association '44, '45, '46, '47

MARY ARLINE

Sodality 44, '45, '46, '47
Class Secretary '46
Loretine Staff '47
International Relations Club '47
Red Room Committee '47
French Club '44, '45, '46
Classical Club '47
Athletic Association '44, '45, '46, '47





Patricia Marilyn Powers

ST. LOUIS, MISSOURI

A.B. in Sociology

Calm clarity marks her as a "leading" lady. Perfected planning produced the Powder Bowl. Her sunny disposition keeps her our "pinned-up" girl. Cool coordination carried her through the mishaps of the Musicale. Salve to Pat—today, tomorrow, always!



Mary Elizabeth Riffel

MOBERLY, MISSOURI

A.B. in English

Here's the capsule-size issue of atomic energy—"Rif" our miniature dynamo. Dream up a picture of a daisy-fresh lass in pinafore sowing her garden of verse. Then smudge her nose with printer's ink—this pretty little "co-ed". She has something there that is so square, with her grand old name.

PAT

Sodality '44, '45, '46, '47
 Student Spiritual Council '46, '47
 Sodality Union Secretary '47
 Campus Guide Committee '46
 Web Staff '44, '45, '46, '47
 Lorette '47
 Orchestra '44
 French Club '44, '45, '46, '47

MARY

Sodality '44, '45, '46, '47
 Web Staff '44, '45, '46, Co-editor, '47
 Poetry Club '45, '46, '47, President '47
 Lorette Staff '45, '46
 Class Treasurer '46
 Campus Guide Committee '46
 Classical Club '46
 Dramatics Club '44, '45
 English Club '46



Rose Mary Reid

ST. LOUIS, MISSOURI

A.B. in English

Little Leprechaun in or out of costume is this pocket-size edition of Reids, Inc. She meets her press partner on her own level, banging out deadlines from the pinnacle of an almanac padded chair. Meet a real life version of a syndicated column in mile-a-minute chattertime.

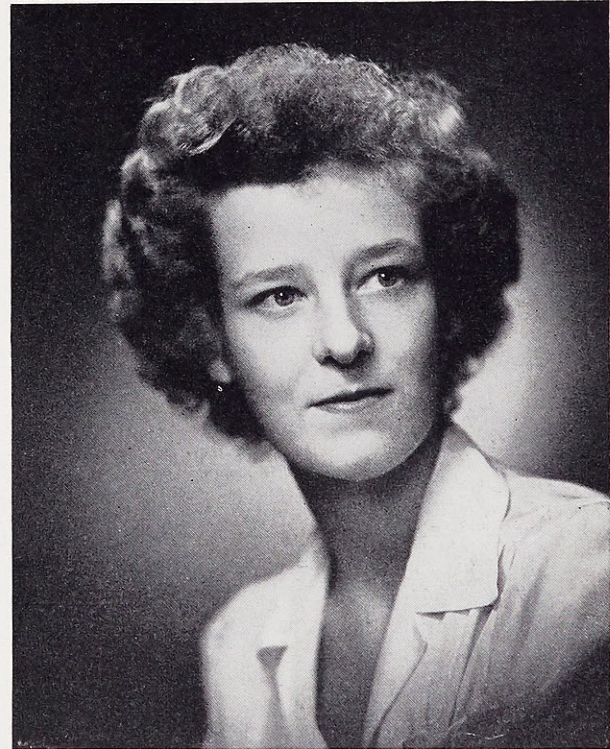


Mary Jane Reid

ST. LOUIS, MISSOURI

A.B. in Sociology

A gentle glow of sincerity warms the atmosphere about her. A kind of homespun humor turns up in yarns which keep us laughing in spite of ourselves. The chain of the Musicale was smoothly linked together with her dazzling dialogue. Peaceful, tranquil Mary Jane accomplishes things with almost effortless efficiency.



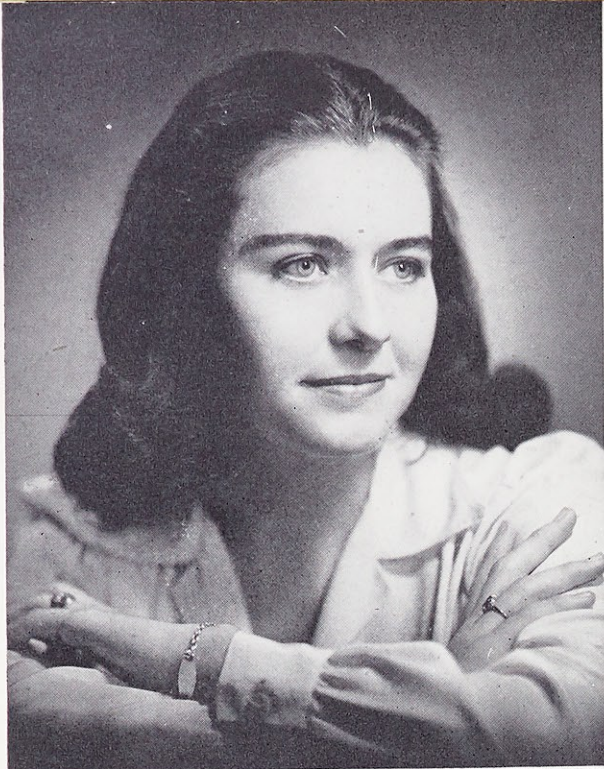
ROSE MARY

Sodality '44, '45, '46, '47
Web Editor '47
Web Staff '45, '46
University News Reporter '45, '46
Section Club President '46
International Relations Club '46, '47
Student Spiritual Council '47
French Club '44, '45, '46, '47

MARY JANE

Sodality '44, '45, '46, '47
Class Secretary '47
Web Staff '44, '45, '46, '47
International Relations Club '46, '47
French Club '44, '45, '46, '47
Sociology Club '45, '46
Athletic Association '44, '45, '46, '47





Mary Louise Rogers

ST. LOUIS, MISSOURI

A.B. in Sociology

A Sodalist supreme is this peppy Prefect whose catchy quips and comments weave a sprightly sparkle into the pattern of Wednesday afternoon. Liaison officer between home camp and the University, she's a gal with marvelous connections. Nonchalant, hysterical and very special—thumbnail sketch of "Rog."



Josephine Sanftleben

LEMAY, MISSOURI

A.B. in Sociology

Favorite hostess for Senior reunions, a party producer perfect is Jose of the peaceful countryside. Smoke in her eyes and wistfulness in her voice mark her mellow manner. Open-handed with her favors, open-hearted with her love, this happy, hospitable Jose.

MARY LOU

Sodality '44, '45, '46, '47, Prefect '47
 Student Government Board '44, '45, '47
 Student Spiritual Council '46, '47
 Mission President '46
 Budget Committee '45
Who's Who '47
 Web Staff '47
 Varsity Manager '46

JO

Sodality '44, '45, '46, '47
 Class Vice-President '46, '47
 Sociology Award '46
 Sociology Club '45, '46
 Spanish Club '44, '45
 Lauretanum Staff '46
 Web Staff '46, '47
 Campus Guide Committee '47



Mary Anne Schaaf

PARAGOULD, ARKANSAS.

B.S. in Dietetics

"Week-end at Gabby's"—one of the last big memories for the Seniors' bowing out. How to thank her they'll never know. Laughing, appreciative, unassuming, one of the jolliest of the good fellows, runs our memory of Gabby.



Dorothy Schulte

ST. LOUIS, MISSOURI

A.B. in English

This suave symbol of a dramatic dream dazzles the masses as the curtain goes up. A smooth as velvet personality takes form in her interpretation of ballet. Grecian grace tints this American beauty a shade of exotic charm.

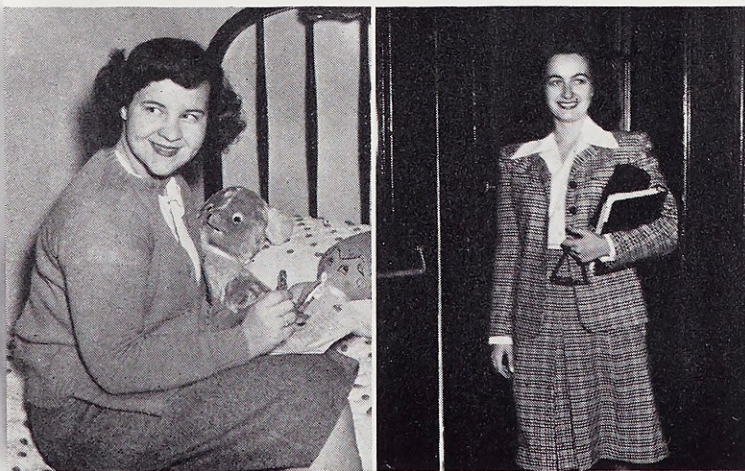


GABBY

Sodality '44, '45, '46, '47
Dietetics Club '44, '45, '46, '47
French Club '46, '47
Athletic Association '44, '45, '46, '47

DOT

Sodality '44, '45, '46, '47
Lorette Staff '46, '47
May Maid '46
Campus Guide Committee '46
Musical Dance Director '46
Dramatic Club '46, '47
International Relations Club '46, '47
Sociology Club '44, '45



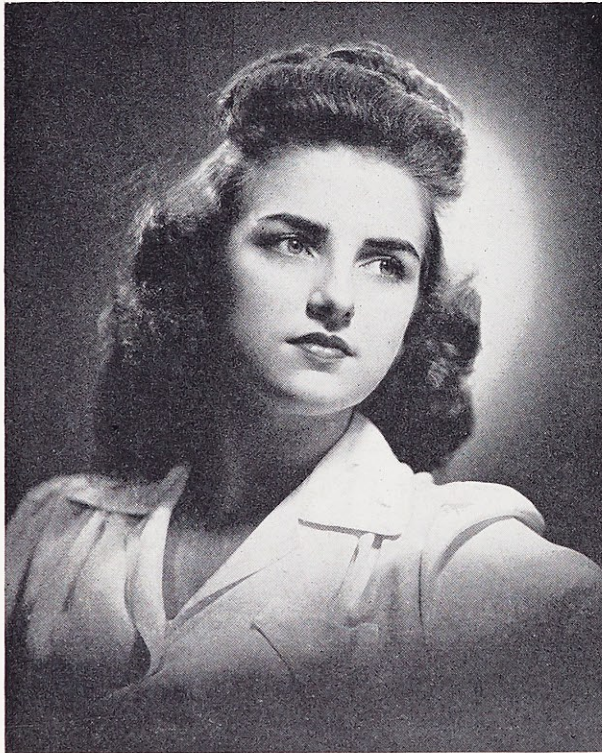


Patricia Aline Tyler

KANSAS CITY, MISSOURI

A.B. in Sociology

A terror at table tennis, a bombshell at bridge, big value to the Varsity, Pat reflects the apex of athletics, feminine fashion. Her Kansas City complex would charm the Chamber of Commerce. An impudent smile plays hide and seek with the flashing eyes of Father "Pete's" pet.



Patricia Ann Walsh

ST. LOUIS, MISSOURI

A.B. in English

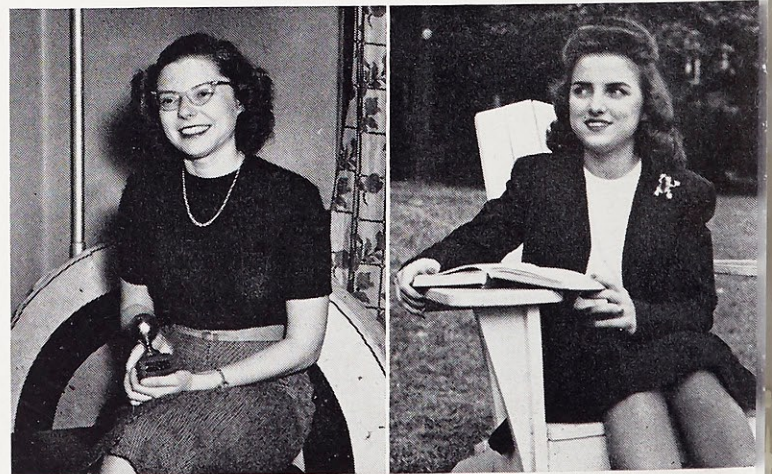
The pages of the publications capture a flair for writing, flashing personality from a pen. The blue lakes of Killarney are mirrored in her eyes. Droll wit and humor wink flirtatiously from the corners of her mind. May we present Pat—a matchless mavourneen.

PAT

Sodality '44, '45, '46, '47
 Varsity '44, '45, '46, '47
 Valuable Player Award 44, '45, '46
 Sociology Club '45, '46
 Spanish Club '44, '45
 Red Room Committee '45
 Rules and Regulations Committee '46
 Athletic Association '44, '45, '46, '47

PATTY

Sodality '44, '45, '46, '47
 Web Staff '44, '45, '47
 Loretine Staff '46, '47
 Musicale '45, '46, Dialogue Committee '47
 Loretto Players '44, '45
 Co-Chairman Soph-Senior Party '45
 Classical Club '47
 Athletic Association '44, '45, '46, '47

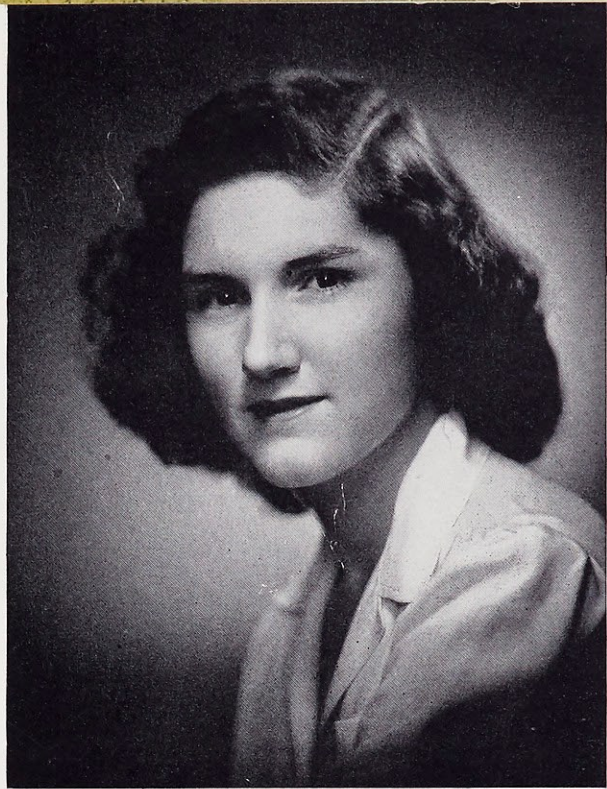


Eunice Willett

SACRAMENTO, CALIFORNIA

A.B. in Mathematics

Sunny California sent a spare ray from the West and Eunice traded in the Gold Coast for a bit of Webster's glow. Never maddened by mountains of Math, she's a promising young Pascal, a cool "calculating" co-ed. The bulletin boards bear her special brand of brightness.

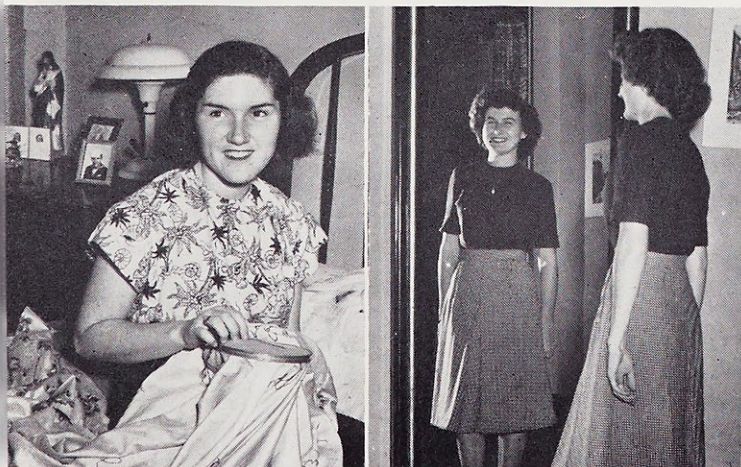


Bette Jane Wolff

ST. LOUIS, MISSOURI

A.B. in Sociology

Quick wit and ready laughter, and blue eyes that smile at you mark our Queen of Hearts and Flowers. A journalistic jewel, tall and smartly collegiate with a face as gay and sparkling as the diamond on her finger, that's B.J.



EUNICE

Sodality '44, '46, '47
Student Spiritual Council '47
Chairman of Publicity I '47
Spanish Club '44
Dramatics Club '44, '47
Sociology Club '46
Math Club Secretary '47
Musical Ticket Chairman '47

B. J.

Sodality '44, '45, '46, '47
Loretine Staff '46, '47
Associate Editor '46, Editor '47
Student Government Board Treasurer '46
May Maid '46
Chairman, May Day Dance '46
Freshman Advisory Committee '45, '47
Web Staff '44, '45
St. Louis Flower and Garden Show Queen '47



. . . Their Companions

Echoing through the green-ivy-clad walls was the laughter of their little sisters, the Juniors, the Sophomores, the Freshmen. A cosmopolitan atmosphere was caught in the focus of the year's events . . . Christmas in Switzerland, dining in a chalet, visiting a toy shoppe, kneeling at a shrine . . . Soph's feting the faculty "Chez Paree" in a dusky French cafe . . . "A trip through Erin" by way of Glocca Morra that fine day. "Webster at home" . . . symbol of family unity strengthened by class loyalty.



O'Hara, Secretary; L. Murphy, Vice-President;
Higgins, President; Sheridan, Treasurer



Goff, Isenman, Filstead, Hotto, Kirchmer

Junior



Fisher, Hammes, Grennan, Lucky, Peck



Faherty, Missel, Schotten, Perry, Laux, J. Murphy, Warner



Marilyn Hayes, Margaret Hayes, Mulligan,
V. Brabec, McMahon



Vienhage, Johnson, Feeney, Maguire

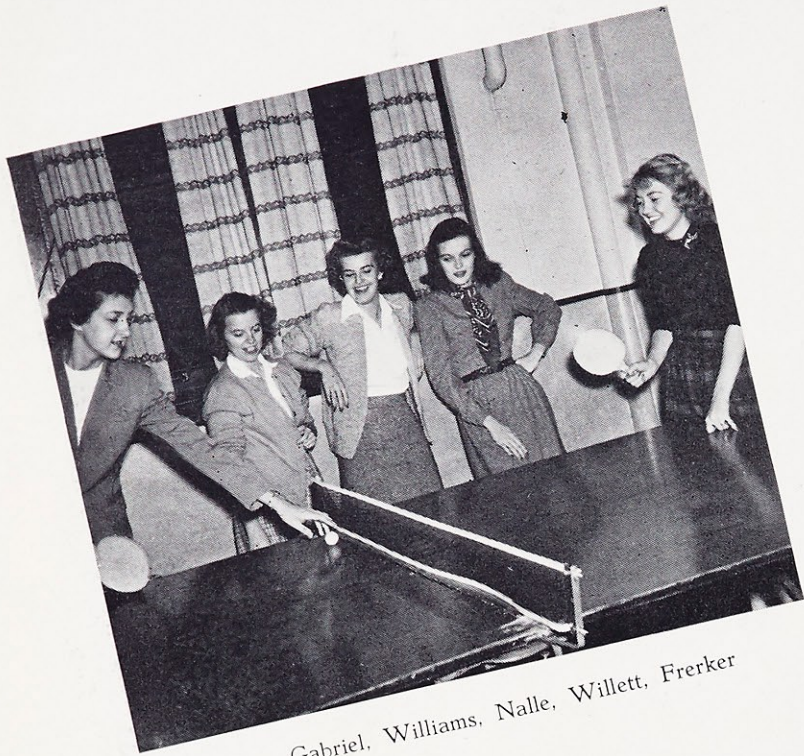
Class



Krueger, Koziatek, Hillner, Webb, Abbott



Walsh, Jolley, C. Murphy, Bahn, Holliger



Gabriel, Williams, Nalle, Willett, Frerker



Stegmaier, Emmick, Manziel, Means, Baumgarten

Junior



Gebhart, Pott, Carrasquillo, Schulte



DeLeo, Boos, Epperson, Dintleman, Wombacher



Murray, Dow, Markway, Wesley, Kiel



Gaines, Welsh, Clark, Bradley

Class



Layman, Reichenbacher, Hesser, Vitt, Stuever



Rosenthal, Hoogstraet, Luechtefeld, Gregowicz, Staed

Sophomore

Taylor, Secretary; Saner, President; Norris, Treasurer;
Michenfelder, Vice-President

Kavanaugh, Daly, Conlon, Fillo



Carroll, Mitchell, Signaigo, Almstedt, Horn,
B. Lindsey, M. Lindsey

Votruba, J. Meyer, Meier, Minneman, M. Meyer, Moll

Class

Schatzman, Ceriotti, Schnur, Krebs, Mahon, Westermayer



Kappel, Kroner, Maas, Lehmkuhl, Kopf



Schmuck, Schwerdtmann, Schmiedeskamp, Mason, Shaw,
Reilly, Fisher



Schaller, B. J. Smith, O'Driscoll, Rogles, Hilton

Sophomore

Bottom Row: Jameson, Gartland, Pombert
 Top Row: Petras, Toole, Coyle

Bottom Row: Quick, Medley, Riley
 Top Row: Hendricks, O'Bryan



Temme, Honderup, Alberter, Cartier, Dunn

Jostedt, Rozier, Porbeck, Mazzoni

Class

King, Ceresia, Balducci, Schwitalla, Brookshire

Hoffman, Jefferson, Moosy, Parr, Unser, Serafini



Deiss, Westphale, Laudicina, Richter

McAvoy, Todt, Sullivan, Waller, Payne, Stack

Sophomore

Jablonski, Gehm, S. Meyer, Hughes



Portela, A. Gonzales, M. Gonzales, E. Gonzales,
R. Gonzales



Freeman, A. Reinheimer, M. Reinheimer, F. Smith



Poat, Miera, Killoran, Schmidt

Class

Samuels, Bennett, E. Nolan, Konrad, O'Neill, J. Nolan

Ponciroli, Enghauser, Thornhill, Harlan, Mueller, Steffen



Garcia, Hardy, Donnelly, Belfiglio

Quigley, Egan, Andrew, Vieten

Freshman

Voss, Vice-President; Edgington, Treasurer;
Ritter, President; Hahn, Secretary

Wou, Swen, Lipic, McDaniels



Bridge, Ebert, Grace, Clynes, Reifsteck, Hellwig, Conlon,
Van Dillen, Ellerbrock

Zemblodge, J. Murphy, Jones, Perry, Pfeiffer, Feeherty

Class

Klingl, Petersen, Acton, Heumann, Weyer, Nestor

Giannatelli, C. Smith, McConnell, Hermann, Franey,
Flanagan, Chapman



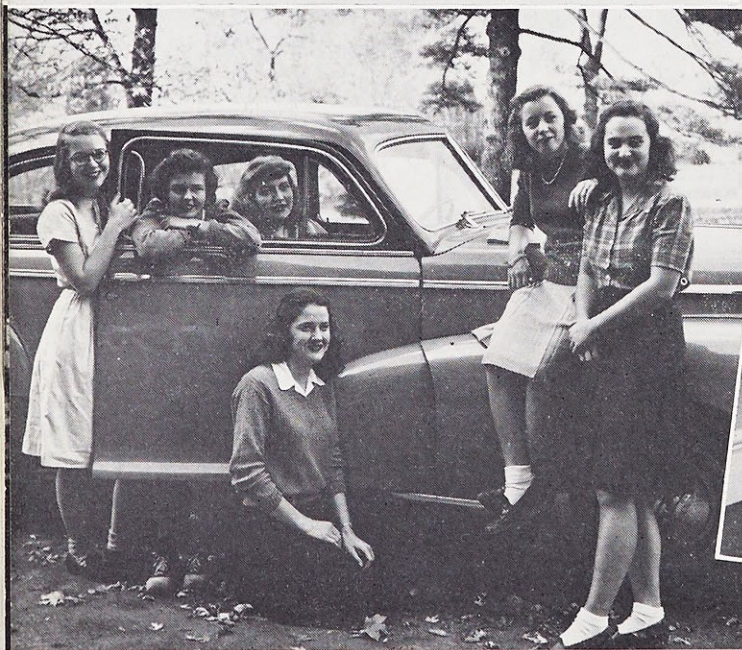
O'Connell, Dyer, Pfeffer, Erickson, Tuschmidt,
M. A. Wolff, J. M. Murphy, Lawrence

Miller, M. Smith, Parks, Silver, Perivanicich

Freshman

Mrs. Gessling, Kellogg, Mott, Clinton, DuPerrett,
Youmans, Mullally, Kunz, Dufner

Riffel, Weinacker, Higgins, Bynum, D. Thomas, Dunn,
Moore, Hanley



McCracken, Wieneke, O'Bryan, Bennett,
Nicely, Sympson

Kelley, Dunphy, Donati, Davis, Webb, Brewer, Kitten

Class

Mrs. Barnicle, Woolard, Sloan, Sheridan,
Rodriguez, Edgington

V. Murphy, Bono, Green, Nix, P. Thomas, Lagow



Jacobs, Lucas, Mulholand, Gaffey, Gleason, Whelan

McVay, Schaefer, Kraft, Ritter, Konzen,
Robinson, Kienstra

Freshman

Brabec, Snyder, Keefer, Welsh, Soto,
Hollis, Richardson



Reno, Dunsford, Holland, Meyrose, Reller, Voss, Wissing



Colburn, Niebur, Henry, Field, Randolph,
Starbuck, P. Smith



Lindeman, Hahn, Reynolds, Byrne, Sommers,
McDonnell, Cronin

Class

Bellan, Lambe, Bender, Wolfe, Neff,
Fullenkamp, Kramer

M. A. Lakin, Surridge, Friend, M. E. Lakin, Byrnes,
M. J. Branch, Ball, Echele, Stuever



Woodward, Dunnaway, Marvin, Cook, Boyle,
Julius, Beasley

Cooper, Carroll, Paul, Koster, Hellman, Granville



. . . *Organizations*

The blue mantel of Our Lady was outspread to watch over our every undertaking . . . Our Lady, patroness of Sodality, advocate for every project. Loyal hearts and willing hands were clasped in cooperation as Websterites found a niche for each and all in a well-rounded extracurricular program. Militant Catholicism aided by Sodality, citizenship of tomorrow learned the S G A way, wholesome relaxation through the Athletic Association, intellectual growth stimulated by departmental clubs . . . all add up to the All-American Girl.

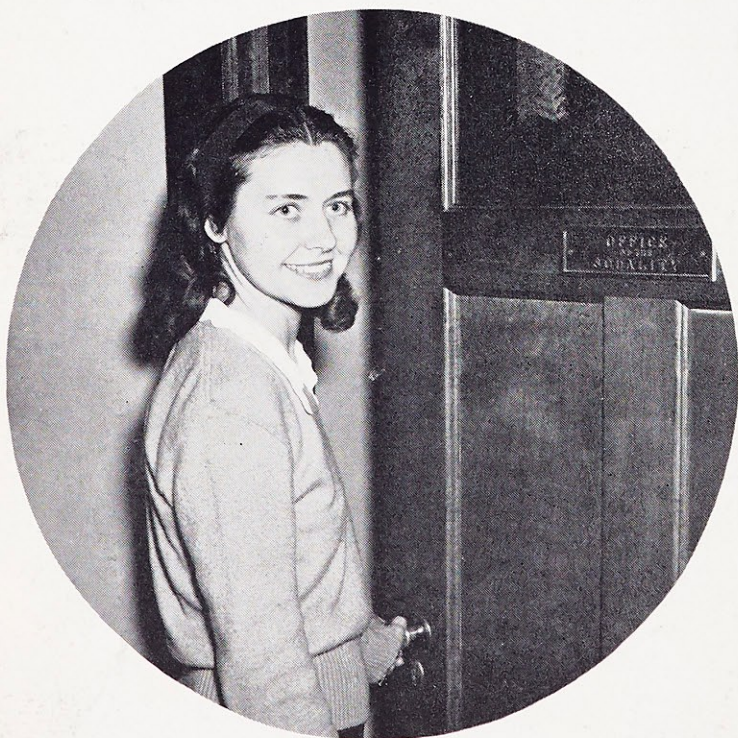


Stack, Feeney, Epperson, Rogers, Clark



E. Willett, Rogers, Clark, Feeney, Epperson, Stack, Webb, Mulligan, Blottman, Mazzoni, Brabec, Powers, Rosenthal, Hutton

Our Lady's Sodality



Mary Lou Rogers, Prefect

Webster spirituality is the key to real Webster spirit for these Sodalists of Our Lady. The lovely lady dressed in blue watches over the action-packed projects of her Websterites as they faithfully strive to follow in her footsteps. Headline participation in the Sodality Union schedule . . . Missionary zeal applied to the home front at St. Malachy's . . . Christmas joy for grateful little hearts . . . Retreat, Freshman-Sophomore . . . Junior-Senior version . . . three day treasure of conversation with God . . . Informed Sodalists kept posted by the eye-catching Weekly Bulletin . . . A touch of liturgy during Mass Week . . . Whole-hearted acceptance of the privilege of First Friday adoration . . . Vocation Week tuned to practicality . . . A reading list inviting summer browsing.

OFFICERS

Prefect..... MARY LOU ROGERS
Vice-Prefect..... EILEEN FEENEY
Secretary..... GINNY STACK
Treasurer..... TIRZAH EPPERSON
Mission President. JANE CLARK

SENIOR REPRESENTATIVES

Senior..... MARY HELEN HUTTON
Junior..... GINNY ROSENTHAL
Sophomore..... JOAN MAZZONI
Freshman..... GAYLE BRABEC

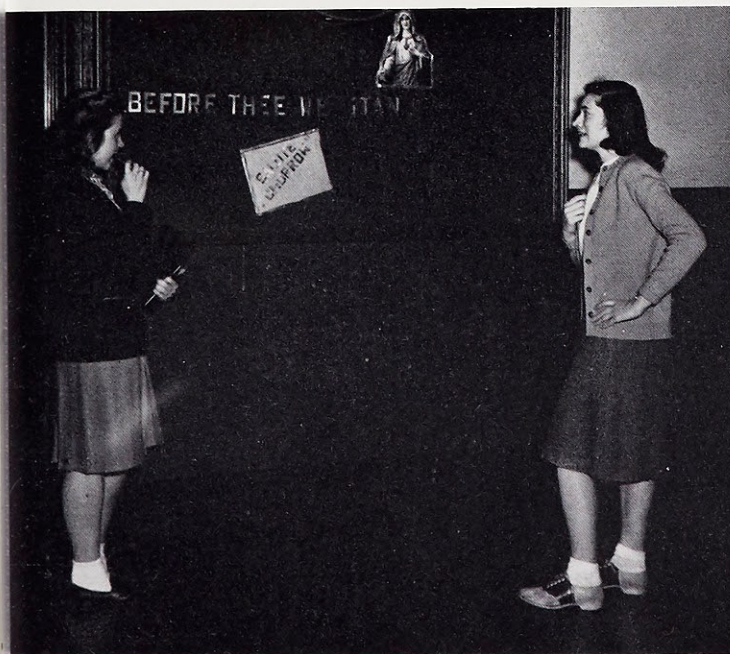
COMMITTEE CHAIRMEN

Apostolic..... PAT POWERS
Eucharistic..... ANNE WEBB
Literature..... ROSE MARY REID
Our Lady's..... GINNY ROSENTHAL
Publicity I..... EUNICE WILLETT
Publicity II..... KAY MULLIGAN



Carolyn Johnson
 Sodality Union Harvest Queen

November brought the Queen's Crown at the University Harvest Festival to Webster's Carolyn—February sent winged-novenas to Our Lady for the Musicale—We crowned Our Beautiful Mother with blossoms that day in May.



Stegmaier, Jolley



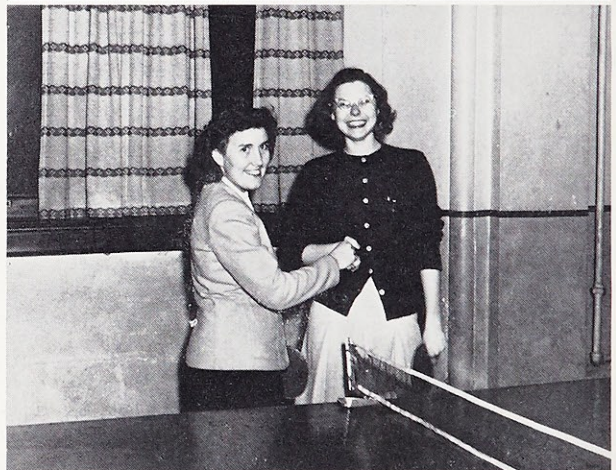
Sodality May Day



B. J. Smith, Secretary; Porbeck, Treasurer;
Gaines, Vice-President; Cooper, President

Athletic Association

"To promote an interest in physical development, to sponsor athletic activities, and to develop leadership and sportsmanship," is the code of the Athletic Association. Theory in practice, it became in '46-'47 as "Coop" and her cohorts kept a busy schedule of monthly meetings and a mass of activities for the Webster athlete, be she Varsity Veronica or Knitting Nettie. Ping-pong tournament intra-mural basketball and volleyball pep song contest bonfires pep rallies weekly swimming meets ice-skating riding bowling hikes bridge tournament ample opportunity for each and all. The varsity came through with a terrific season, six victories and two defeats. The jammed-packed gym rang with the wild cheering of the faithful followers sparkled by matchless Moe, Jean, Janie and Betty Lou. Lemons and oranges and every-ready water buckets balanced the efforts of Cissy and Jeanne, the mad-cap managers. Signal a cheer, for "Coop," the president, and that successful Southerner, Miss Berman, the capable coach.



Standing: Moore, Higgins, B. Jostedt, Miss Berman,
B. J. Smith, Whelan, Wieneke
Kneeling: Konrad, Goff, Blottman, Gaines, Porbeck, Tyler,
Harrison, Cooper

Maguire, winner; Tyler, runner-up

Morheuser, Payne, Taylor, Frerker

The Web

THE STAFF

- Co-Editors..... { MARY RIFFEL
ROSE MARY REID
- Assistant Editor..... PAT NOLAN
- Associate Editors..... { EILEEN FEENEY
ROSE MARIE SANER
- Make-Up Editor..... DOROTHY McAVOY
- Feature Editor..... PAT POWERS
- Business Manager..... JO SANFTLEBEN
- Circulation Managers..... { JANIE HIGGINS
KATE DALY
- Photographer..... BONNY JOSTEDT



Mary Riffel, Rosemary Reid

A big job of editing came from two little lightning flashes, co-editors: "Little Reid" and "Rif." An interesting new format topped with greeting card heads Welcome diversion with frequent guest writers Inauguration of favor-winning columns On the Ball—Pss-sst—Webmazelle.



Standing: Rogers, Chauvin, B. J. Smith, Ceriotti, Sanftleben, M. A. Wolff, M. J. Reid, Hammes, P. Nolan, D. McAvoy, R. Reid

Sitting: Bradley, Payne, Hoogstraet, C. Murphy, Feeney, Powers, Mary Riffel



Bette Jane Wolff

The Loretine

Editor-in-Chief.....	BETTE JANE WOLFF
Assistant Editor.....	BETTY CONVY
Associate Editors.....	{ JANE O'HARA MURIEL HOOGSTRAET
Circulation Editors.....	{ BETTY LINDSEY MARY LINDSEY
Art Editors.....	{ MARY ARLENE POWELL BETTY LOU TAYLOR
Business Editor.....	JACKIE MARKWAY

Personality covers focused all eyes on the quarterly distribution of our literary magazine. Editorials, short stories, poetry, from the pens of Websterites weaved a thread of variety through the pages of the *Loretine*.



Hammes, Powell, Taylor, B. J. Wolff, C. Welsh, O'Hara, Hoogstraet, Convy, Powers, Geerling, P. Walsh, Bradley, Maguire, M. Lindsey, Schulte, Markway, B. Lindsey

French Club

Movies from the memoirs of Webster summer-students at Laval . . . Study of modern French music . . . Compiling of a scrapbook for this specially successful Le Cercle Francais.

Row I: Reid, M. E. Lakin, Taylor, Herman, President; Casey, McVay, Reynolds, Mulligan.

Row II: Voss, Holland, Echele, Schwitalla, B. J. Smith, L. Steuver, Helwig, Friend, Moll, Westermeyer.

Row III: Powers, Reid, Kraft, Stack, Saner, Schulte, L. Murphy, Hoogstraet, Krebs.

Row I: Marceau, Gaudry, Bernard, Ritter, G. Cooper, Schmidt.

Row II: Mahon, Walsh, Ludwig, Bridge, Meyrose, Dintleman, Wambacher, Feeherty, DeLeo.

Row III: Maguire, Mullally, Mott, Clinton, Weinacker, Coyle, Toole, Colburn, Neff.

Spanish Club

Increased membership for the planned programs featuring "South of the Border" music . . . travel talks on Latin-speaking countries . . . a tea dance for El Centro Hispano-americano.

Row I: Egan, Hutton, President; Fitzgerald.

Row II: Kappel, Schnur, M. Gonzales, Miss Etnier, V. Brabec, Belfiglio, Clynes, Edgington.

Row III: Ceresia, King, Harlan, A. Gonzales, Hanley, Portella, Hughes, R. Gonzales, Jablonski, Enghauser, Henry, Killoran, Kraft, Dufner, M. Carroll, Iseman.

Row I: Marvin, McCracken, Nolan, Youmans, Lauderdale, Herman, Richardson, Randolph, Niebur.

Row II: Vieten, Schotten, Bravo, O'Driscoll, Uribe, Gebhart, Perivanicich, Steffen, Sympson, Rozier, McAvoy, Mazzoni, D. Thomas, Schaeffer, Welloughby.

I. R. C.

All international eyes turned on United Nations . . . the hope of world peace. The background of International Cooperation gave them their footing as they delved into the Security Council . . . General Assembly . . . Economic-Social Council . . . UNESCO . . . Court of Justice. Application of basic notions became headlines for the final meeting in "Working through Federal Union with UN." The second annual intercollegiate panel discussion—Rehabilitation of Japan and Germany—insured Webster's IRC of a lasting tradition.

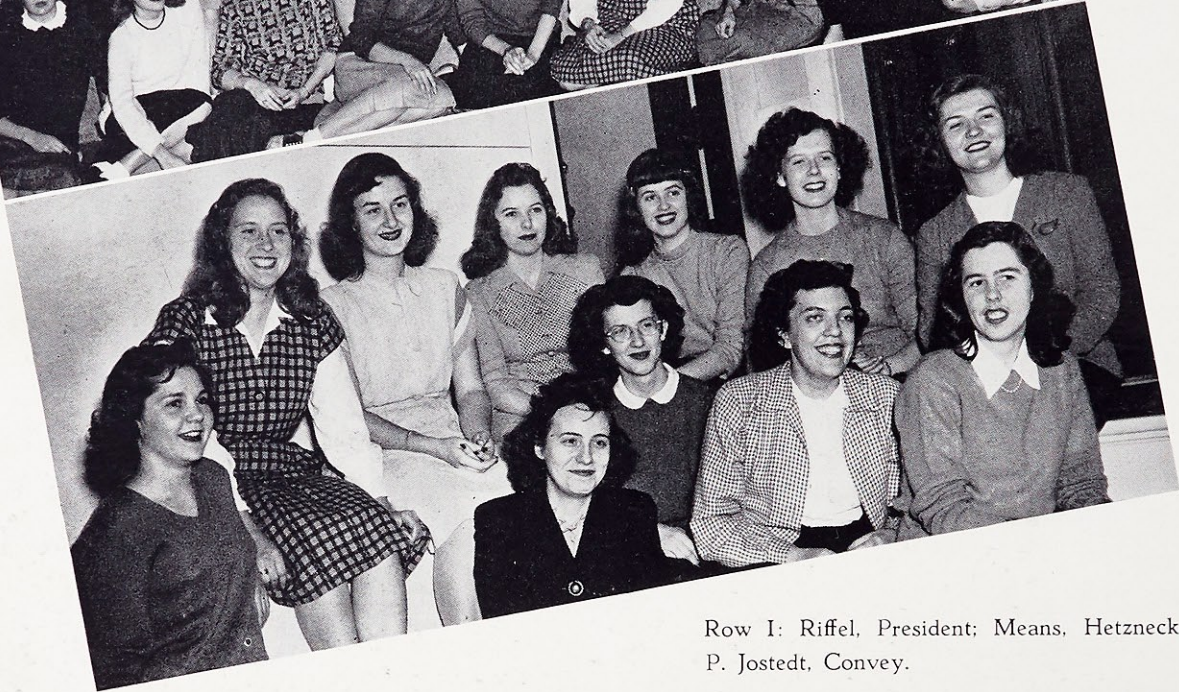


Margaret Hayes, Harrison, Johnson, Ludwig

- | | |
|-----------------------------|-----------------|
| <i>President</i> | LORRAINE LUDWIG |
| <i>Vice-President</i> | MILLIE HARRISON |
| <i>Secretary</i> | MARGARET HAYES |
| <i>Treasurer</i> | CAROLYN JOHNSON |



Standing: Miera, Schulte, Feeney, Saner, Stack, Lucy Murphy, Rozier, M. J. Reid, Vienhage, Sheridan, Hutton, Chauvin, Bernard, Fisher, Peck, C. Murphy, Grennan, McDonough
 Sitting: Leuchtefeld, R. Reid, B. Walsh, Carrasquillo, Marg Hayes, Harrison, Ludwig, Johnson, Marilyn Hayes, Williams, Mulligan, Chase, P. Jostedt



Row I: Riffel, President; Means, Hetznecker, P. Jostedt, Convey.

Row II: Hoogstraet, Serafini, Colburn, Hanley, Schulte, Jr., P. Hoffman.

Row I: Riffel, Steigmier, Emmick, Rosenthal, Hetznecker, President; Hoogstraet, Maas, E. Willet, Dufner.

Row II: Todt, Niebur, Colburn, Demn, Perry, Higgins, Bahn, Holliger, Baumgarten, McConnell, Stack.

Row III: Bernard, Schulte, Fullenkamp, P. Jostedt, Hanley, Luechtefeld, Randolph, Jolley, Taylor, Walsh.

Dramatic Club

House lights went up at regular meetings for "I Remember Mama"—make-up demonstration—intercollegiate Dramatic Club tea. Theatre and supper party topped off the year. Loretto Players "packed them in" for "Alice in Wonderland"—"Our Town"—"Hamlet."

Poetry Club

Original verse sparkled like the stars—metrical, symmetrical, geometrical in style. They tied their holiday poems in gay Christmas boughs and holly. Poetry from the new hopefuls was accepted by the old bards and fresh talent joined the inner circle.

Math Club

Revival of the Math Club at W.C. in a strong new triangle. Three divisions, the base, the median plane, and the peak, provided Math food for thought for every college level. Old theories played "new-fangled" games and loved them.

Row I: J. Steuver, B. J. Smith, O'Driscoll, Krueger, President; E. Willet, Secretary; Jablonski, C. Johnson.

Row II: Pott, Emmick, Goff, Grennan, Means, Horn, Maguire, Minneman, B. Lindsey, M. Lindsey.

Dietetics Club

A buffet supper for incoming members opened the year's "feastivities." "Calorie Counter," the club paper, met with great success. Expert speakers, Webster grads, turned internes and practicing dietitians, gave a dash of "home-made" flavor.

Row I: Alberter, Sanftleben, E. Willet, Staed, Koziatek, Burns, President; Norris, Payden, Maher, L. Fisher.

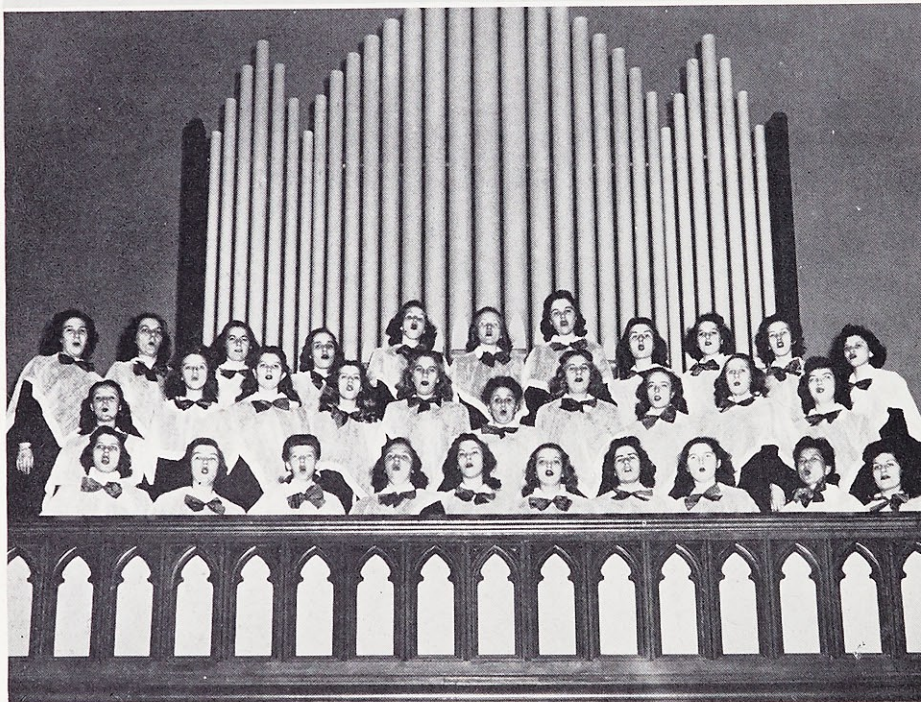
Row II: Latimore, Kroner, Horn, B. Lindsey, M. Lindsey, Vieten, Webb, D. McAvoy, Hillner, Schaaf, Mahon, Gaines.

Row III: Keefer, M. A. Wolff, E. Dunn, Cartier, Temme, Harrison, Gabriel, Clark, Frecker.





Kellogg, Moossy, Missel, Marilyn Hayes, R. Sheridan, Edgington, Stegmaier, Robinson, Stuesse, Miss Peche, Kapal, Reynolds, Beasley, Dunaway, C. Murphy, Sloan, Lakin.



Third Row: Lindeman, Baumgarten, Gaudry, Sheridan, Gleason, Marilyn Hayes, President; McMahan, Serafini, Mott, Mullally, Silvers.

Second Row: Holliger, De Leo, Fisher, Perry, A. Rienheimer, Miss Peche, M. Rienheimer, Peck, Dunaway, Henry.

First Row: Norris, Hoffman, B. Herman, Ritter, Gebhart, Kunz, Hutton, Sloan, Swen, Laudicina.

Orchestra

Webster's Orchestra—ready to go at the drop of a downbeat as they gave the one-two marching meter for Monday Assembly promenades . . . entr'acte melodies for the Loretto Players Productions—"Our Town" . . . "Alice in Wonderland" . . . "Hamlet." Orchids to the Orchestra.

Choral Club

These are Webster's jet-propelled "Jenny Linds," always stretching their tonsils over one musical mood or another—Christmas caroling here and in town with the Caroler's Association . . . radio broadcasts . . . the Spring Music Festival at Kiel . . . countless practices . . . and more practices.

Row I: Ceriotti, L. Murphy, President; Norris, Vice-President.

Row II: Kellog, Convey, Lauderdale, Fullenkamp, Bender, Fillo, King, B. Jostedt.

Row III: Hughes, Blottman, Kramer, Lamb, Bellan, Egan, Krebs, Bynum.

Row IV: G. Cooper, Johnson, D. Jones, Feeherty, Iseman, Bradley, Clinton, Dufner.

Row V: Dintleman, Feeney, Grennan, Clark, Frecker, Fitzgerald, Higgins, Coyle.

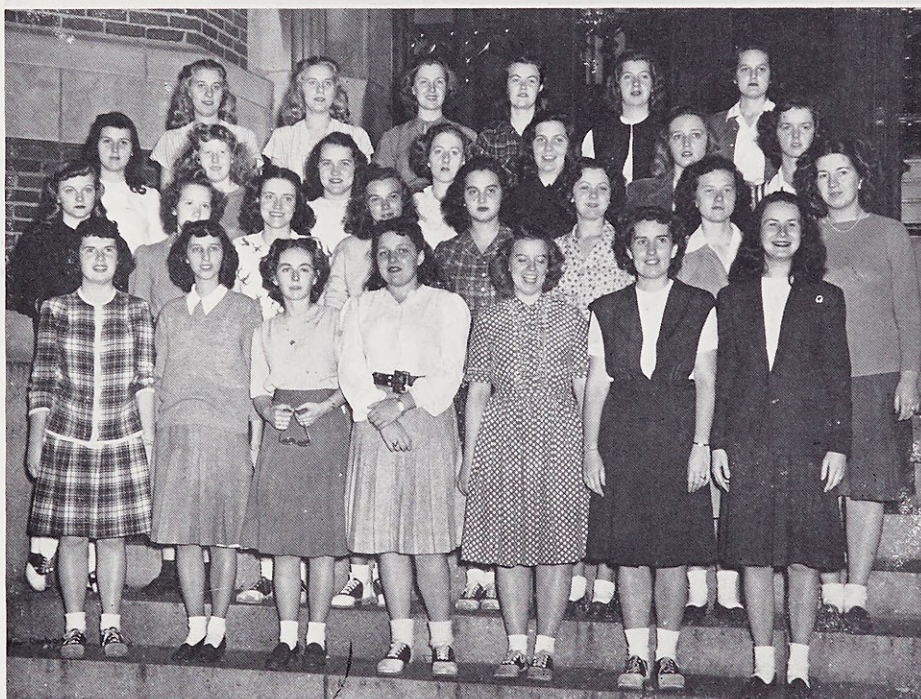


Row I: M. Wolff, Wambacker, Walsh, Marvin, Williams, Maguire, Staed.

Row II: Steffen, McVay, Maher, D. Thomas, Sympson, P. Thomas, L. Steuver, C. J. Murphy.

Row III: S. Meyer, Mulholland, Neff, Vitt, Zemblige, Markway, Wienacker.

Row IV: A. Reinheimer, M. Reinheimer, O'Hara, Rogier, Toole, Mott.



Classical Club

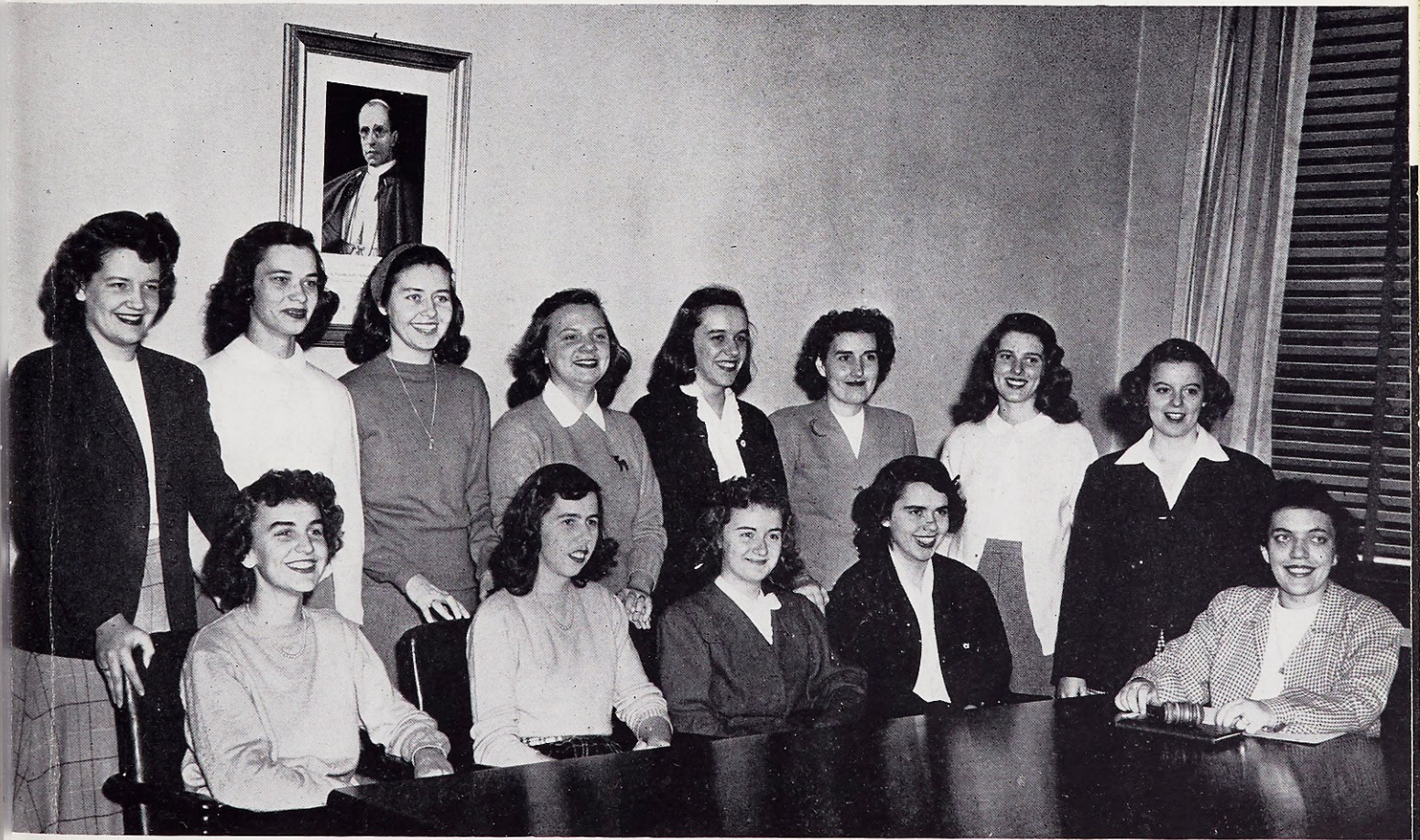
"Classic" publicity sent attendance soaring. Reading background for years to come—mythological allusions—Greek and Roman culture—taught representatives of all departments through the medium of the popular Classical Club. *The Iliad*, *The Odyssey*, *The Aeneid*, were given in individual reports, ever raising discussions of problems in the epics. Membership and officer representation in the University Classical Club added research papers, general meetings, and a tea to the year's schedule.

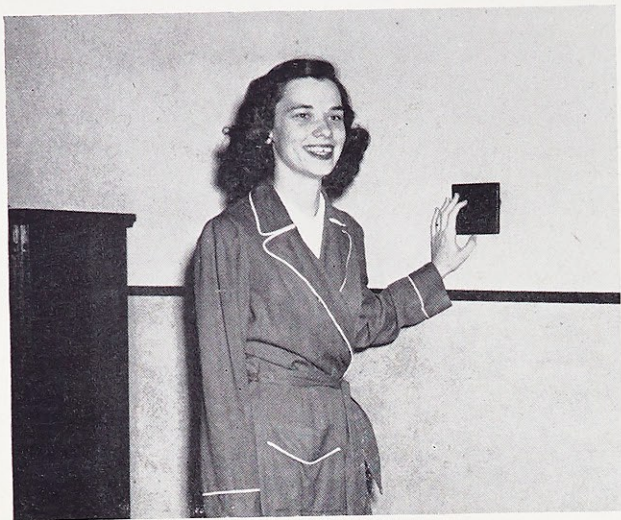
A privilege jealously guarded at Webster is Student Government, a gift of a faculty which believes in its students . . . a group outlet for individual expression of talent . . . a training camp for democracy . . . the pulse beating in the very heart of Webster. A year jammed-packed with activity has rolled away, and successful student participation in government has another mark to its credit. Thanks again to the faculty for a system, dearly loved.



Peggy Jostedt

Standing: Saner, Blottman, Rogers, Ritter, Higgins, Maguire, Cooper, Williams
 Sitting: Wolff, Convy, Krueger, Chase, Jostedt





Jean Blottman

House Committee

- Hall President.....JEAN BLOTTMAN
 Senior Representative.....MARY HETZNECKER
 Junior Representative.....AGNES A. GABRIEL
 Sophomore Representative...JEAN SULLIVAN
 Freshman Representative.....PEACHIE WEINACKER

Rules and Regulations

- Chairman.....JEAN BLOTTMAN

JOY HERMAN
 LORENE PECK
 ANNE WEBB
 ROSE MARIE SANER



Hetznecker, Blottman, Sullivan, Gabriel, Weinacker,
 Herman, Webb, Saner, Peck, Blottman

Who's Who

Character — Leadership — in extra-curricular activities . . . Scholarship —Potentialities—of future usefulness to business and society. This is the exacting combination of qualities on which election to Who's Who is based. Webster students and faculty have chosen to include in their Hall of Fame these outstanding representatives of Catholic College living.

1946

PEGGY JOSTEDT

ANNE HARMON CHASE

1947

MARY LOU ROGERS

BETTY COOPER

JEAN BLOTTMAN

EILEEN FEENEY

MARY HETZNECKER

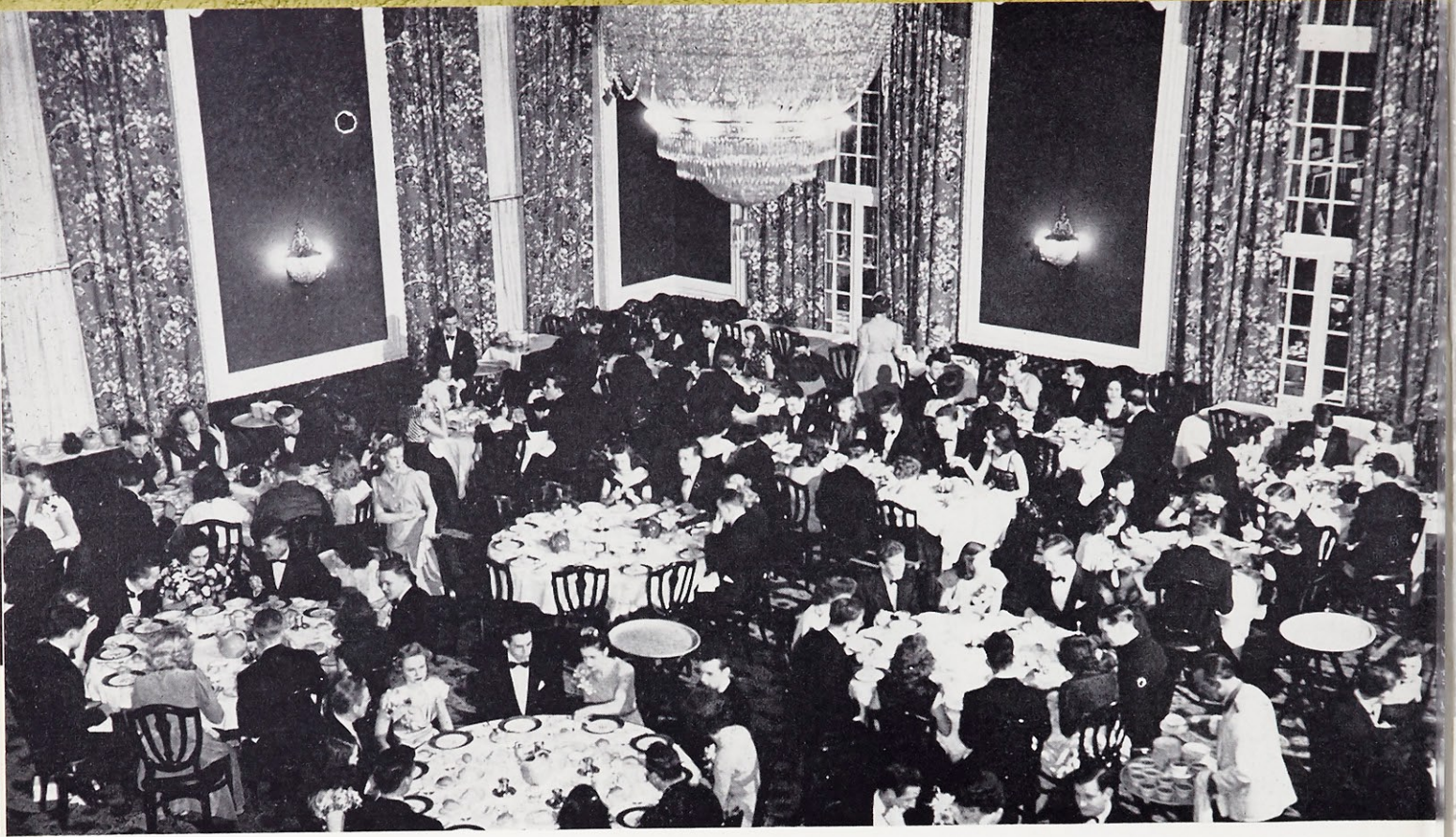
JEANNE HIGGINS

BETTY CONVY

VIRGINIA WILLIAMS



Back Row: Higgins, Convy, Cooper, Feeney, Williams
Front Row: Hetznecker, Rogers, Chase, Jostedt, Blottman



Mid-Winter Promenade

Fall Formal



October . . . The Ivory Room of the Jefferson . . . Herb Mahler's Orchestra . . . fall formals and a twilight night saw our first big dance of the year in on its feathery wings. One o'clock rolled around all too soon, and swishing skirts became memories 'till January and the unforgettable Mid-Winter Promenade. Beautiful Senior favors . . . dinner and dancing at the magnificent M.A.C. as the social pinnacle of the year was tied up in golden remembrance.

Jules Jumping Gay came chuckling down the aisle to invite Webster to a Swiss Christmas. Master of the fire-side in the Colonnade, he took in the gay "RSVP gifts" for St. Malachy's. He sent us exploring Toyland, the Watch Shoppe, and the snow-capped mountains in the Red Room. He beamed over four hundred Websterites dining in a Swiss chalet, and matched his glowing smile with those of the Seniors over their sparkling new Webster pins. Christmas with Mr. Jumping Gay—a "jewel" to remember.



Christmas at Webster



Salute



Pat Powers

- Chairman and Director..... PAT POWERS
- Song and Dance..... MARILYN HAYES.
- Ads and Patrons..... { LUCY MURPHY
LUCILLE HOTTO
- Programs..... KAY MULLIGAN
- Costumes..... GINNY ROSENTHAL
- Lighting..... MURIEL HOOGSTRAET
- Scenery..... { CHARLOTTE BAUMGARTEN
MARY GEBHART
- Publicity..... MARY C. McDONOUGH
- Scenarist..... MARY JANE REID
- Accompanists..... { MARY M. HOFFMAN
DORIS SCHNUR



"Stein Song"

te
Tomorrow

T
ARTEN
IGH
N
"Oklahoma"



"Dear Old Donegal"



"Gotta Be A Football Hero"



"Jalousie"



May



Jean Crowns The Queen

- | | |
|----------------------|--|
| Queen..... | TRUDY BERNARD |
| Retiring Queen..... | JEAN WILLARD |
| Senior Maids..... | { ALICE GROSTIDIER
PEGGY O'NEILL
KATHIE LAMBRECHTS |
| Junior Maids..... | { DOT SCHULTE
BETTE JANE WOLFF |
| Sophomore Maids..... | { JEAN FRERKER
JEANNE SHERIDAN |
| Freshman Maid..... | LOIS MCGREGOR |

THEY WERE ELECTED



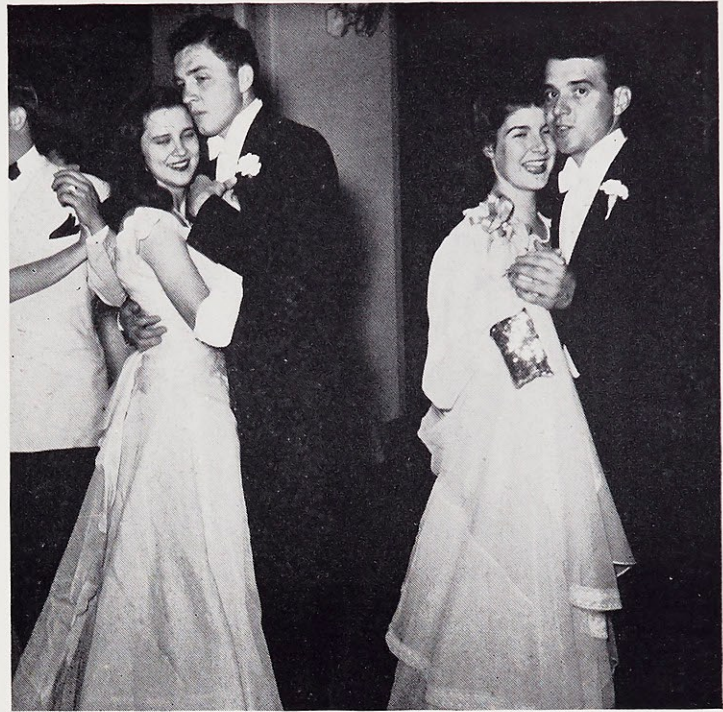
Grosdidier, O'Neill, Frerker, Sheridan, Bernard, McGregor, Schulte, Lambrechts, Wolf

Day

In the hush of twilight, our Queen of Love and Beauty reigns over her loyal subjects.

The Seniors, with their daisy chain, and the Freshmen's traditional May Pole dance, lend the notes of regal pageantry to Her Majesty's court of splendor.

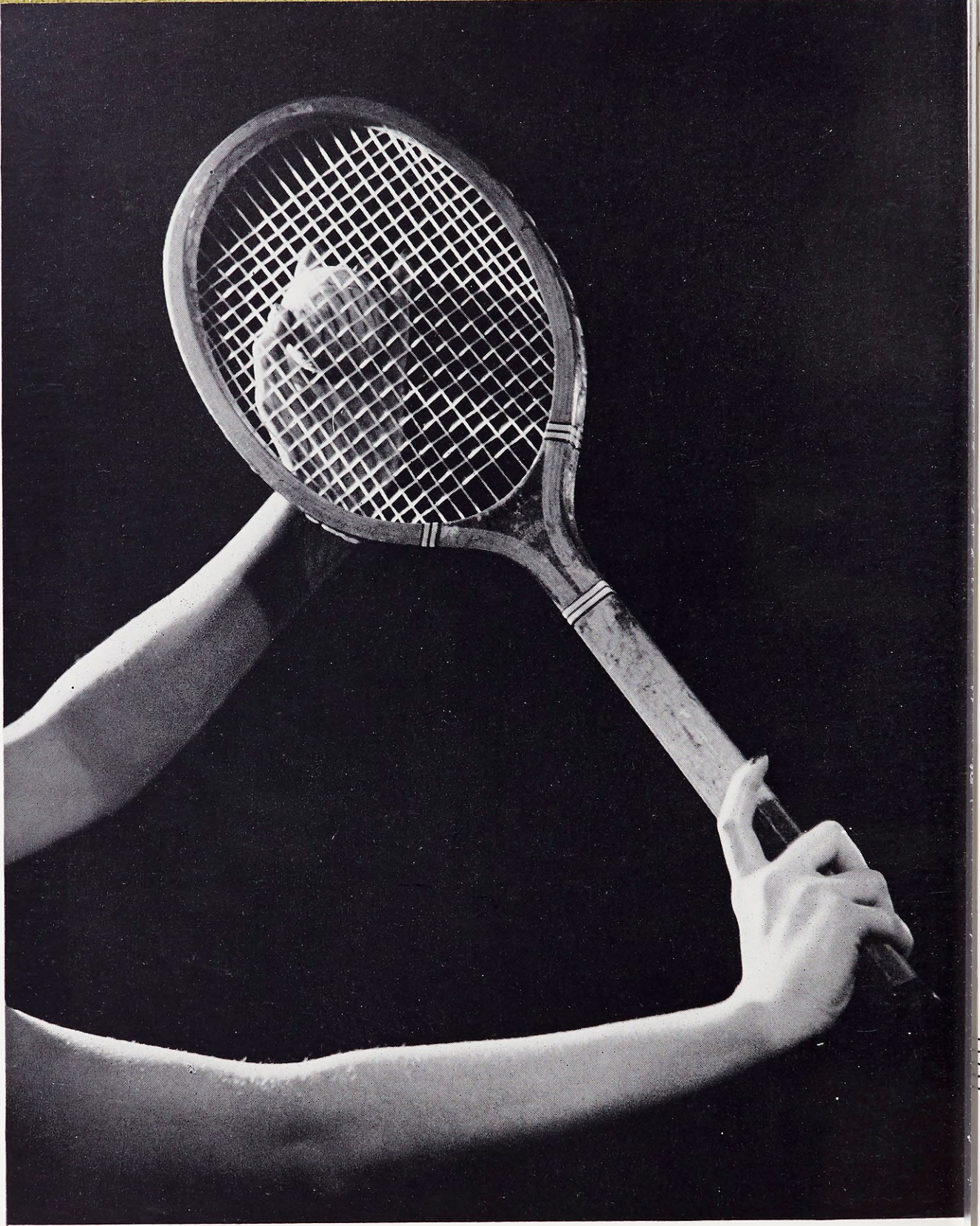
Each year Webster pays homage to Her Royal Highness who is chosen while a member of the Junior Class and reigns throughout the following year, preserving the peace and happiness of her subjects.



They Danced The Queen's Dance



The Queen Receives Her Court



... *Activities*

For all the little things, your daughters love you, Webster . . . the everyday, homespun things that fill our hours and line our memories . . . the cheese and cracker parties . . . dunkin' at the Wheel and Spoke . . . Pre-Promenade Visits with our dates . . . kneeling at the Christmas crib . . . watching the painter make a rainbow of our halls . . . style shows . . . new Freshie faces . . . pickles at a picnic . . . Friday night at the Ozark . . . mailbox rush . . . eyes that sparkle on first sight of snow . . . that sigh of relief as the last period goes on a term paper . . . the friendships that will never die.



Stockin' up



Dry dock



Frosh



Ain't we devils?

Tween



Face lifting



Taken to the Cleaners



Daily



Frolicin' farmers



Term paper?

Times



Piggy



Winter "wander"-land



Glad t' see ya



dunkin'



Dots

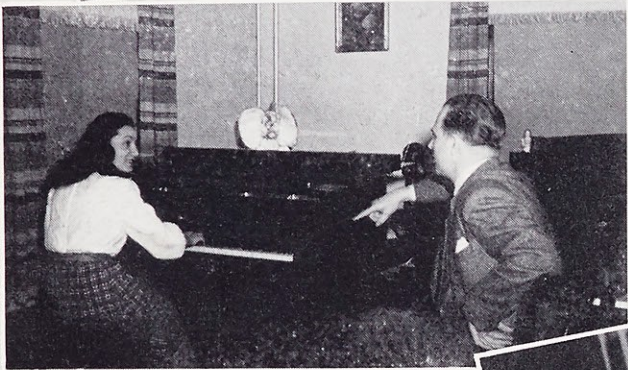
Daily



Birds of a feather



Bard of the Avon



Audition

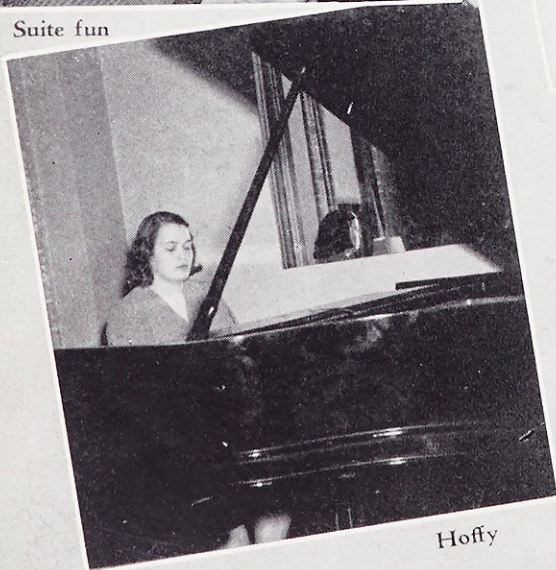


Suite fun



Bombs away

Behind the "scenes"



Hoffy



Football hero



Tween

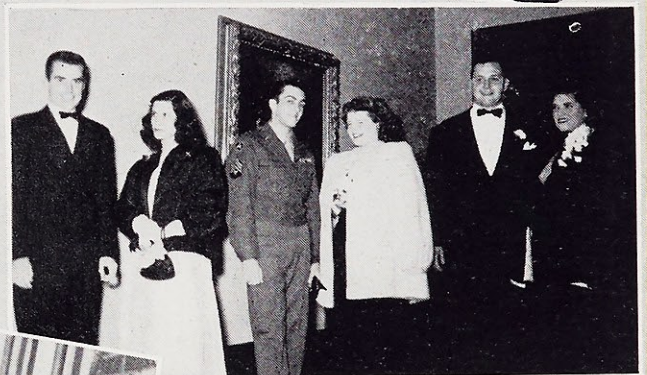


Adeste Fidelis



"Because"

Times



Ready at half-past 8



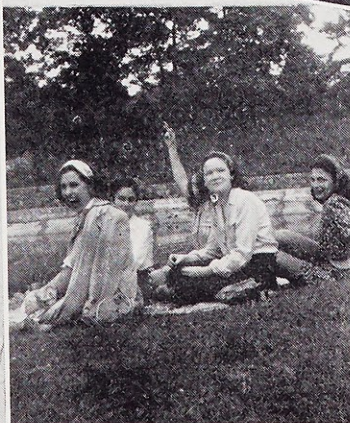
Sisters



Off side



Anna and—



Who dat?



Mum's the word



Collegianes



Oh Happy Day



Where's Horace



Poppa pays



Double-jointed



Arrival



See ya in the funnies

Tween

That Webster Rite

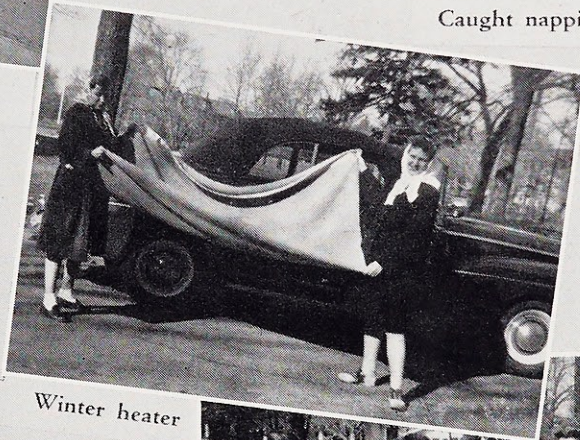




Shades of the past



Caught napping



Winter heater

Times



Win or lose



Pulchritude

Rite look



A pretty girl—



Chez Paree

Formal Photographs

EDWYN PORTRAITS

Informal Photographs

SISTER M. GERMAINE, S.L.

GLENN OGLE

JACK ZEHRT

Engraving

CENTRAL ENGRAVING COMPANY

Binding

THE BECKTOLD COMPANY

Printing

VON HOFFMANN PRESS

Designed by

HARRY J. SWAIN, JR.