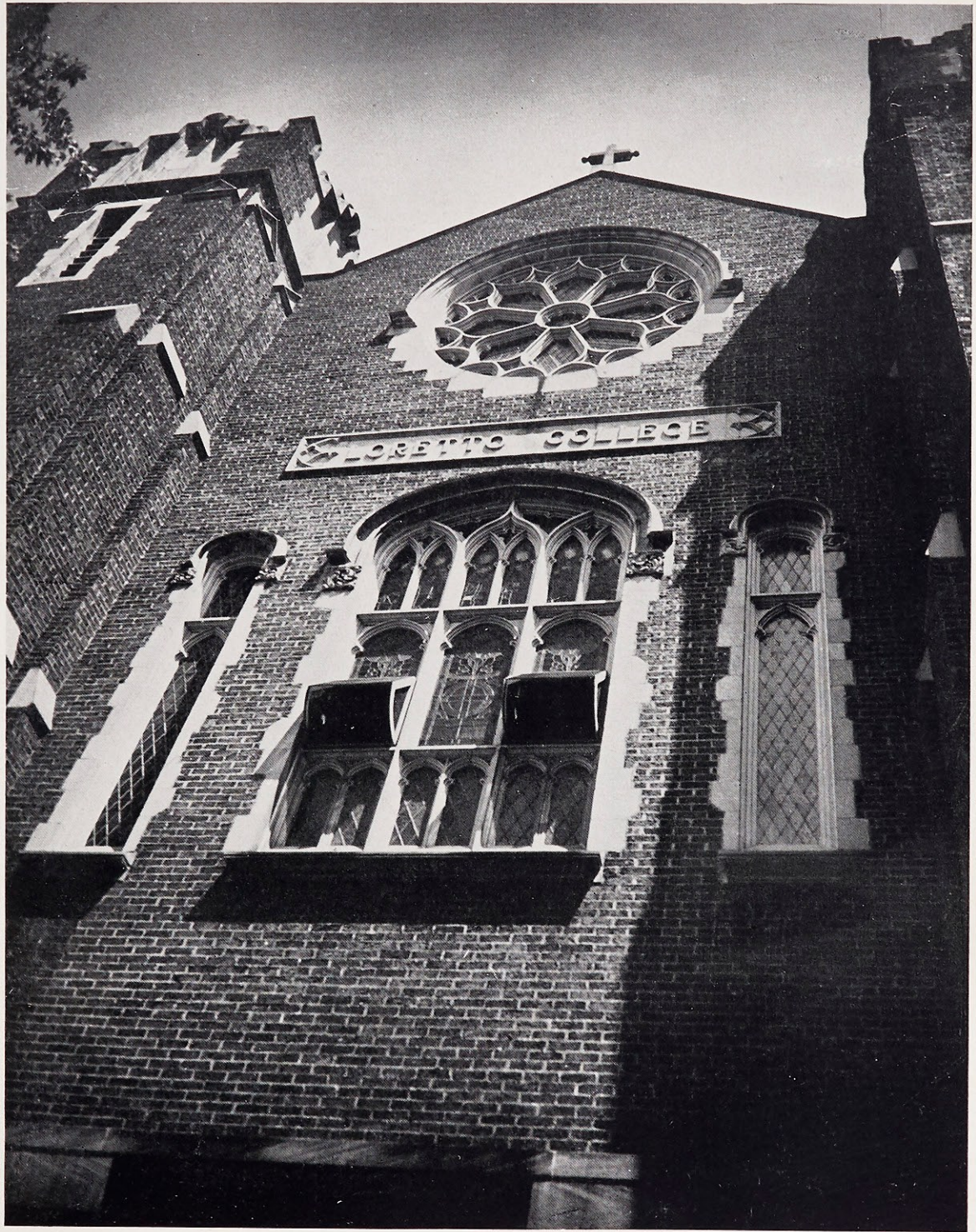


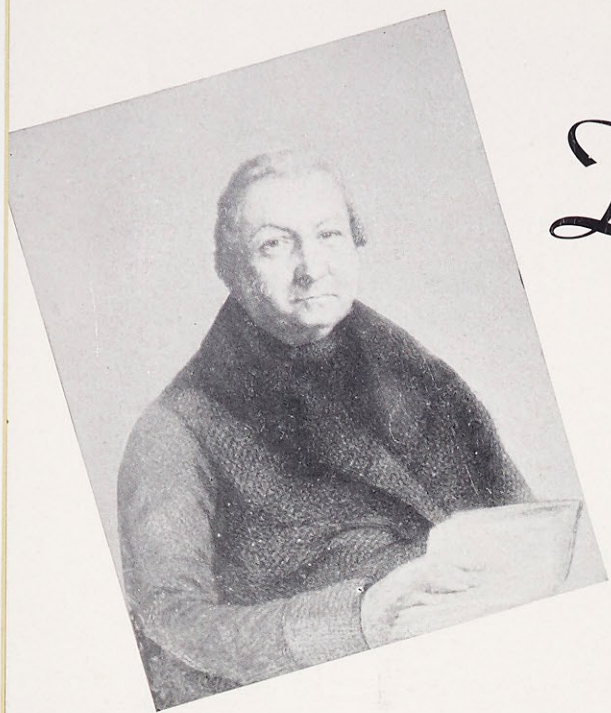
LAURETANUM
... 1942







The Lauretanum
1942



Reverend Charles Nerinckx, founder of the Sisters of Loretto at the Foot of the Cross.

Dedication

We humbly dedicate this book to Father Charles Nerinckx with the hope that you, the students of Webster College, may become more devoted to him and thus imitate his beautiful unselfishness, piety, and humility. May you be truly then of Loretto and comply with his wish:

Love your Jesus dying with love for
you on the Cross!

Love Mary, your Mother, sorrowing
at the foot of the Cross!



Cabin-church of Father Nerinckx located on the grounds of the Motherhouse at Nerinx, Kentucky.



Classes

Activities

Friends

the fun we've had . . . so that you might remember them all we present the 1942 LAURETANUM.

We hope this LAURETANUM shall ever remain an example of Webster's true spirit, that of unselfishness.



Cecelia Beine

ST. LOUIS, MISSOURI

A.B. IN ENGLISH

Sodality, '39, '40, '41, '42; Treasurer, '41
 S.S.C., '40, '41, '42
 C.S.M.C., '39, '40, '41, '42; Vice-President, '40
 Student Government Assoc., '39, '40, '41, '42
 LORETTINE, '40, '41, '42; Editor, '42
 WEB, '39, '40, '41, '42; Feature Editor, '42
 Classical Club, '39, '40, '41, '42; Secretary-Treasurer, '40
 Le Cercle Francais, '40, '41, '42; President, '42
 Choral Club, '39, '40, '41, '42
 Chemistry-Biology Club, '40
 Co-op, '41, '42
 Vodvil, '41
 Athletic Association, '39, '40, '41, '42

Rosalie Brennan

ST. LOUIS, MISSOURI

B.S. IN CHEMISTRY

International Relations Club, '42
 Chemistry-Biology Club, '39, '40; Vice-President, '41, '42
 Math-Physics Club, '39, '40, '41
 Sodality, '39, '40, '41, '42
 Vodvil, '39, '40, '41
 C.S.M.C., '39, '40; Vice-President, '41, '42
 Athletic Association, '39, '40, '41, '42
 WEB Staff, '42
 LORETTINE, Business Manager, '42
 Biology Award, '40
 Chemistry Award, '41
 Choral Club, '39, '40; Secretary-Treasurer, '41, '42
 Orchestra, '40, '41
 Drum and Bugle Corps, '39, '40, '41
 Music Guild, '39, '40, '41, '42
 Student Government Association, '39, '40, '41, '42



Mary Elizabeth Baker

ST. LOUIS, MISSOURI
P.H.B. IN HISTORY

Chemistry-Biology Club, '39, '40, '41, '42
International Relations Club, '42
Music Guild, '42
Choral Club, '39, '40; President, '41, '42
Loretto Players, '39, '40, '41; Vice-Pres., '42
Sodality, '39, '40, '41, '42
Vodvil, '39, '40, '41
C.S.M.C., '39, '40, '41, '42
Athletic Association, '39, '40, '41, '42
Circulation Manager WEB, '42
Circulation Manager LORETTINE, '42
Co-op, '41, '42
Shakespearean Award, '40
Student Government Assoc., '39, '40, '41, '42



Betty Burke

ST. LOUIS, MISSOURI
A.B. IN FRENCH

Le Cercle Francais, '39, '40, '41, '42
Chemistry-Biology Club, '40
Class Secretary, '40
Sodality, '39, '40, '41, '42
Vodvil, '39, '40, '41
C.S.M.C., '39, '40, '41, '42
Varsity Basketball, '41, '42; Captain, '42
Athletic Association, '39; Treasurer, '40;
Vice-President, '41; President, '42
LAURETANUM, Sports Editor, '41
Student Government Association, '39, '40, '41, '42



Marie Finke

NORMANDY, MISSOURI

PH.B. IN SPEECH

Le Cercle Francais, '39, '40, '41, '42;
President, '41

Chemistry-Biology Club, '40

Loretto Players, '39, '40, '41, '42; Treasurer,
'40, '41, '42

Sodality, '39, '40, '41, '42

Vodvil, '39, '40, '41

C.S.M.C., '39, '40, '41, '42

Athletic Association, '39, '40, '41, '42

LAURETANUM, '41; Assistant Editor

Co-op, '42

Shakespearean Award, '41

Speech Award, '40

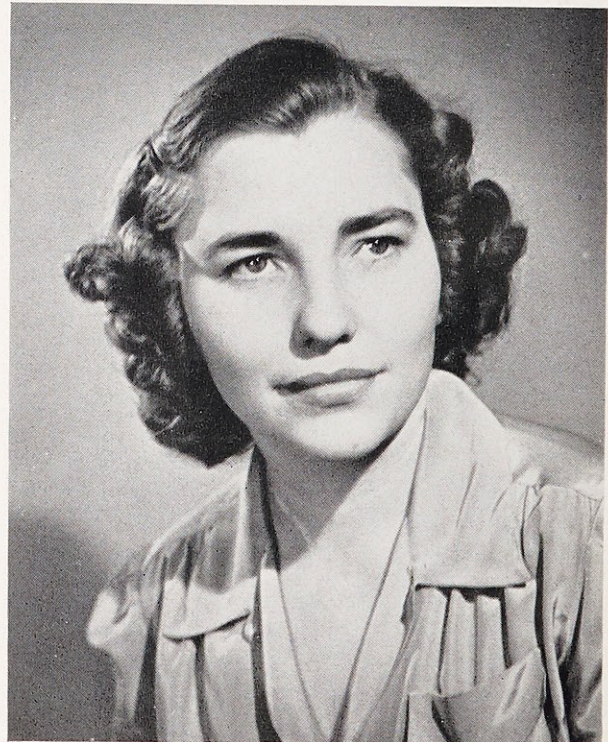
Student Government Assoc., '39, '40, '41, '42

Catherine Carroll

WEBSTER GROVES, MISSOURI

B.S. IN BIOLOGY

Chemistry-Biology Club, '39, '40, '41, '42
International Relations Club, '40, '42
Music Guild, '42
Loretto Players, '39, '40, '41, '42
Riding Club, '41, '42
Photography Club, '39
Math-Physics Club, '41
English Club, '42
Class President, '39, '41
Class Vice-President, '40
Sodality, '39, '40, '41, '42
C.S.M.C., '39, '40, '41, '42; Secretary-Treasurer,
'42; Board, '39, '41, '42
Vodvil, '39, '40, '41; Stage Manager, '40, '41
Varsity Basketball, '39, '40, '41, '42; Captain, '42
Athletic Assoc., '39, '40, '41, '42; Board, '41, '42
Student Government Board, '39, '41; Treasurer,
'41
Nominating Committee, '40, '41, '42
Choral Club, '39
Co-op, '39, '41, '42
WHO'S WHO, '41
Student Government Assoc., '39, '40, '41, '42



Mary Louise Fitzgibbon

UNIVERSITY CITY, MISSOURI
P.H.B. IN SPEECH

Le Cercle Francais, '39, '40
Chemistry-Biology Club, '40, '41, '42
Choral Club, '41
Loretto Players, '39, '40, '41, '42; President, '42
Class Vice-President, '42
Sodality, '39, '40, '41, '42
Vodvil, '39, '40, '41; Elected Chairman, '42
C.S.M.C., '39, '40, '41, '42
Athletic Association, '39, '40, '41, '42
Student Government-Class Representative, '41
Student Spiritual Council, '42
Nominating Committee, '42
WHO'S WHO, '42
Cheer Leader, '39, '40, '41, '42
Student Government Assoc., '39, '40, '41, '42



Rita Jo Gauvin

ST. LOUIS, MISSOURI
P.H.B. IN ENGLISH

Class Treasurer, '39, '40
Riding Club Manager, '42
French Club, '39, '40, '41, '42
International Relations, '42
Loretto Players, '39
Sodality, '39, '40, '41, '42
Vodvil, '39, '40, '41
C.S.M.C., '39, '40, '41, '42
Circulation Manager of LAURETANUM, '41
Athletic Association, '39, '40, '41, '42
Student Spiritual Council, '42
American History Award, '41
Student Government Association, '39, '40, '41, '42



Barbara Gleason

ROLLA, MISSOURI
PH.B. IN FRENCH

Hall President, '42
House Committee, '39, '40, '41, '42
WHO'S WHO, '42
May Maid, '40
Student Government Board, '42
Student Spiritual Council, '42
Business Manager of LAURETANUM, '41
WEB Staff, Circulation Manager, '39;
Assistant Editor, '41
Athletic Association, '39, '40, '41, '42
Sodality, '39, '40, '41, '42
Vodvil, '39, '40
Student Government Assoc., '39, '40, '41, '42

Mary Beatrice Huelsman

EDWARDSVILLE, ILLINOIS
PH.B. IN SPEECH

LE CLERC COLLEGE, Belleville, Ill., '39, '40
Loretto Players, '41, '42
Vodvil, '41
C.S.M.C., '41, '42
Athletic Association, '41, '42
Speech Award, '41
Choral Club, '41, '42
Co-op, '42
Student Government Association, '41, '42



June Judge Kavanaugh

WEBSTER GROVES, MISSOURI
A.B. IN HISTORY

Le Cercle Francais, '39, '40
International Relations Club, '41, '42
Chemistry-Biology Club, '39, '40
Sodality, '39, '40, '41, '42
Vodvil, '39, '40, '41
C.S.M.C., '39, '40, '41, '42
Athletic Association, '39, '40, '41, '42
LAURETANUM, Circulation Manager, '41
Student Government Assoc., '39, '40, '41, '42



Marie Kientzy

ELSBERRY, MISSOURI
PH.B. IN SPEECH

Le Cercle Francais, '39, '40
Choral Club, '39, '40, '41
Chemistry-Biology Club, '40
Co-op, '39, '40, '41, '42; Secretary, '40
Athletic Assoc., '39, '40, '41, '42; Treasurer, '41
Loretto Players, '39, '40, '41, '42; Vice-President, '41; Secretary, '42
Riding Club, President, '41
C.S.M.C., '39, '40, '41, '42
Sodality, '39, '40, '41, '42
Vodvil, '40, '41
WEB, Reporter, '39
Student Government Assoc., '39, '40, '41, '42



Mary Adeline Kilkenny

SANTA FE, NEW MEXICO

A.B. IN SPANISH

Spanish Award, '40, '41

House Committee, '42

Resident Social Chairman, '42

Class Secretary, '42

Sodality, '39, '40, '41, '42

Vodvil, '39, '40

Athletic Association, '39, '40, '41, '42

Business Manager of WEB, '42

Chemistry-Biology Club, '40

Spanish Club, '39, '40, '41, '42; President, '42

Student Government Assoc., '39, '40, '41, '42

Marion Klees

ST. LOUIS, MISSOURI

PH.B. IN HISTORY

CLARK COLLEGE, Dubuque, Iowa, '39

Spanish Club, '40, '41

Riding Club, '41, '42

Class Secretary, '40

Student Government Board Class Representative, '41

Sodality, '40, '41, '42

Varsity Basketball, '40; Captain, '41, '42

Athletic Assoc., Secretary, '40; Vice-President, '41

C.S.M.C., '40, '41, '42

Student Government Assoc., '40, '41, '42



kenny

Lorraine Knese

ST. LOUIS, MISSOURI
B.S. IN DIETETICS

Le Cercle Francais, '39, '40
Chemistry-Biology Club, '39, '40; President,
'42; Secretary-Treasurer, '41
Loretto Players, '39
Dietetics Club, '42; President, '42
Sodality, '39, '40, '41, '42; Vice-Prefect, '42
Vodvil, '40, '41
C.S.M.C., '39, '40; Class Representative, '41
Athletic Association, '39, '40, '41, '42
Student Spiritual Council, '42
Student Government Association, '39, '40, '41, '42
May Maid, '42



Lorraine Maher

NORMANDY, MISSOURI
A.B. IN ENGLISH

WHO'S WHO, '42
Student Government Board, Faculty Representa-
tive, '42
WEB Staff, '42
Athletic Association, '39, '40, '41, '42
Sodality, '39, '40, '41, '42
C.S.M.C., '39, '40, '41, '42
Student Government Association, '39, '40, '41, '42
Editor of LAURETANUM, '41
Le Cercle Francais, '39, '40
Loretto Players, '39
Co-op, '41, '42
May Maid, '42



Ann O'Donnell

ST. LOUIS, MISSOURI

A.B. IN ENGLISH

Senior Class, President, '42
 WHO'S WHO, '41
 Student Government Board, Faculty Representative, '41; Secretary, '42
 Nominating Committee, '40
 Le Cercle Francais, '39, '40, '41, '42
 Sodality, '39, '40, '41, '42
 Vodvil, '39, '40, '41
 C.S.M.C., '39, '40, '41, '42
 Varsity Basketball, '39, '40, '41; Captain, '42
 Athletic Association, '39, '40, '41, '42
 WEB Staff, '40, '41, '42
 LAURETANUM, Advertising Manager, '41
 Choral Club, '39
 Co-op, '42
 Student Government Assoc., '39, '40, '41, '42
 May Maid, '42
 Flower Show Representative, '42

Virginia Leight

ST. LOUIS, MISSOURI

A.B. IN ENGLISH

WEB Staff, '42
 Vodvil, '38
 Athletic Association, '36, '37, '38, '42
 Student Government Assoc., '36, '37, '38, '42
 Choral Club, '37, '38, '42
 Drum and Bugle Corps, '37, '38
 Associate Editor of LORETTINE, '42
 Le Cercle Francais, '37, '38, '42
 Classical Club, '37, '42; Secretary, '38
 International Relations Club, Secretary, '38



Charlotte McCann

LOWELL, MASSACHUSETTS
B.S. IN BIOLOGY

SIENNA HEIGHTS COLLEGE, Adrian, Mich., '39

Le Cercle Francais, '40

Chemistry-Biology Club, '40, '41, '42

Sodality, '40, '41, '42

Athletic Association, '40, '41, '42

May Maid, '41

C.S.M.C., '40, '41, '42

Student Government Association, '40, '41, '42



Marie Elinor Neville

ST. LOUIS, MISSOURI
A.B. IN HISTORY

WEB, '41, '42; Editor, '42

LORETTINE, '41, '42; Associate Editor, '41;
Art Editor, '42

The SODALITE, '41, '42

Sodality, '39, '40, '41, '42

S.S.C., '41, '42; Class Representative, '42

C.S.M.C., '39, '40, '41, '42

Co-op, Assistant Manager, '41, '42

International Relations Club, '41, '42; President,
'42; Vice-President, '41

Classical Club, '40, '41; Vice-President, '42

Le Cercle Francais, '39, '41

English Club, '42

Chemistry-Biology Club, '40

Vodvil, '41

Athletic Association, '39, '40, '41, '42

Freshman History Award, '39

K. of C. Award in History, '41

St. Louis University Classical Club, '41

Student Government Association, '39, '40, '41, '42



Helen Ritter

LOUISVILLE, KENTUCKY

A.B. IN ENGLISH

Student Government Board, '39, '40; Vice-President, '41; President, '42

Student Spiritual Council, '42

WHO'S WHO, '42

Co-op, '41, '42

Athletic Association, '39, '40, '41, '42

Vodvil, '39, '40; Business Manager, '41

Sodality, '39, '40, '41, '42

Classical Club, '41, '42; Vice-President, St. Louis University Classical Club, '42

Spanish Club, '39; Secretary-Treasurer, '40

Student Government Assoc., '39, '40, '41, '42

C.S.M.C., '39, '40, '41, '42

Dolores Margaret Rakers

ST. LOUIS, MISSOURI

A.B. IN LATIN

Assistant Editor of LORETTINE, '42

WEB Staff, '40, '41, '42; Assistant Editor, '41

Sodality, '39, '40, '41, '42

Classical Club, '39; Vice-President, '40; President, '42

St. Louis University Classical Club, '41, '42

Eta Sigma Phi, '42

Le Cercle Francais, '40, '41, '42

Editor of LA VOIX, '41, '42.

International Relations Club, '41; Vice-President, '41

Math-Physics Club, '40

Chemistry-Biology Club, '40

C.S.M.C., '39, '40, '41, '42

Drum and Bugle Corps, '39, '40, '41

Athletic Association, '39, '40, '41, '42

R. F. Hartz French Award, '40, '41.

Student Government Association, '39, '40, '41, '42



Mary Catherine Phelan

MAPLEWOOD, MISSOURI

A.B. IN ENGLISH

Le Cercle Francais, '40
Classical Club, '40, '41; Secretary-Treasurer, '40
St. Louis University Classical Club, '41
Choral Club, '39, '40, '42
Chemistry-Biology Club, '40
International Relations Club, '41, '42;
Secretary-Treasurer, '42
Loretto Players, '39, '41, '42
English Club, '42
Sodality, '39, '40, '41, '42
Sodalite Staff, '41, '42
Vodvil, '39, '40, '41
Student Spiritual Council, '41, '42
C.S.M.C., '39, '40, '41, '42; Secretary-
Treasurer, '40; President, '41, '42
Co-op, '41, '42; Manager, '41, '42
WEB, '41, '42; Assistant Editor, '42
LORETTINE, '42
Athletic Association, '39, '40, '41, '42
Civic Award, '39
Student Government Assoc., '39, '40, '41, '42



Catherine O'Regan

ST. LOUIS, MISSOURI

PH.B. IN HISTORY

Spanish Club, '39, '40
International Relations Club, '41, '42
Sodality, Class Representative, '39, '40;
Prefect, '41
Vodvil, '40
C.S.M.C., '41
Student Government Board, '41, '42
Student Spiritual Council, '39, '40, '42
Athletic Association, '39, '40, '41, '42
Sodality Maid, '39
Student Government Assoc., '39, '40, '41, '42



Sara Shultz

OLNEY, ILLINOIS

B.S. IN MUSIC

LE CLERC COLLEGE, Belleville, Ill., '39, '40

Music Guild, '41, '42; Vice-President, '42

Orchestra, '41, '42; President, '42

Sodality, '41, '42

Athletic Association, '41, '42

Student Government Association, '41, '42

C.S.M.C., '41, '42

Margaret Ward

ST. LOUIS, MISSOURI

PH.B. IN ENGLISH

Le Cercle Francais, '39, '42

Chemistry-Biology Club, '40

English Club, '42; Chairman, '42

Class Treasurer, '41, '42

Sodality, '39, '40, '41, '42

Vodvil, '41

Varsity Basketball, '40, '41

WEB, '41, '42; Assistant Editor, '42

LORETTINE, '42

Nominating Committee, '41

Co-op, '42

Student Government Assoc., '39, '40, '41, '42



Helen Thurmond

ST. LOUIS, MISSOURI
P.H.B. IN HISTORY

May Queen, '41
Vice-President of Class, '41
Student Spiritual Council, '41
Sodality Nominating Committee, '41
Athletic Association, '39, '40, '41, '42
C.S.M.C., '39, '40, '41, '42
Vodvil, '40, '41
French Club, '39, '40
Chemistry-Biology, '39
International Relations Club, '41, '42
Student Government Assoc., '39, '40, '41, '42



May Queen and Her Court

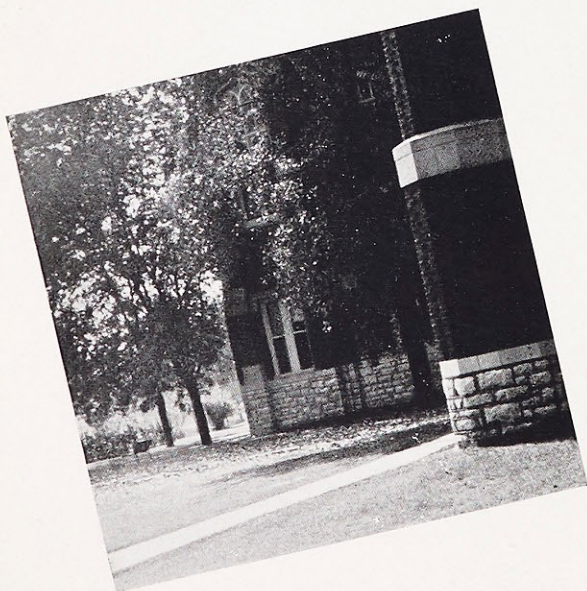


Queen: Helen Thurmond—Retiring Queen: Ruth Rummelhart
Maids (left to right): Eileen Reid, Marie Paule Rajotte, Eugenia Harter, Marian Grant, Charlotte McCann, Annette Drake, Edna Catherine Ahern, Amy Hanlon.



Standing—I. Garvey, M. A. Lingner. Back Row—J. A. Rozier, V. Daly, M. E. Mansfield, M. Whelan, R. Feigenbaum. Front Row—S. Monti, R. Nestor, E. Hanlon, D. Buegler, M. A. Barry.

Junior Class



OFFICERS

VIRGINIA DALY	President
MARY AGNES BARRY	Vice-President
MARY JANE GREENSLADE	Secretary
MARY AGNES LINGNER	Treasurer



Standing—M. J. Greenslade, H. M. Stephenson. Back Row—M. Regan, B. Orr, D. Cantalin, R. M. Spalding, D. Born, A. Potthast. Front Row—D. St. John, M. Barnes, B. J. Pratte, A. Callahan, E. Jarvis.

Roster

Martha Jane Barnes
 Mary Agnes Barry
 Mildred Born
 Dorothy Buergler
 Annetterose Callahan
 Dorothy Cantalin
 Virginia Lee Daly
 Ruth Feigenbaum
 Iris Garvey

Mary Jane Greenslade
 Eileen Hanlon
 Eloise Jarvis
 Mary Agnes Lingner
 Mary Eileen Mansfield
 Susan Monti
 Rosemary Nestor
 Betty Orr

Anita Potthast
 Betty Jeanne Pratte
 Marjorie Regan
 Julie-Anne Rozier
 Dorothy St. John
 Rosie Mae Spalding
 Helen Marie Stephenson
 Mary Whelan



Standing—M. Knecht, M. J. Stokman. Back Row—M. Colburn, M. A. Grennan, D. McDonnell, E. Valle, D. Roybal, R. Reisert, V. Speh, M. Kloeppe, U. M. McGrath. Third Row—E. Carter, C. O'Brien, A. Steinlage, J. Kabbes, M. Ruemping, E. Davila. Second Row—D. Quinlan, M. Riehemann, A. Hanlon, N. J. Burnworth, E. Figueroa, A. Gall. First Row—P. Kerr, M. J. O'Donnell.

Roster

Margaret Ballman
 Norma Jean Burnworth
 Bernice Busmann
 Evelyn Carter
 Marie Colburn
 Catherine Concannon
 Doris Cowan
 Enid Davila
 Roberta Drazen
 Genevieve Fennewald
 Etervina Figueroa
 Louise Fitton
 Viola Mae Fitzgibbon
 Adelina Gall
 Margaret Ann Grennan
 Amy Hanlon
 Marita Helfer
 Thomasine Hunt

Audrey Illig
 Josephine Kabbes
 Ruth Kavanaugh
 Ellen Jane Kennedy
 Patricia Kerr
 Marie Kloeppe
 Margaret Knecht
 Louise Lovely
 Alice McCann
 Dorothy McDonnell
 Una Marie McGrath
 Mary Catherine Morgan
 Mary Mudd
 Claire O'Brien
 Margaret Jane O'Donnell
 Renee Perez
 Dolores Quinlan

Geraldine Reller
 Ruth Reisert
 Marian Riehemann
 Margaret Robinson
 Dora Roybal
 Marline Ruemping
 Rosemary Schneiderhahn
 Ruth Smugai
 Virginia Speh
 Ann Steinlage
 Dorothy Stewart
 Mary Jayne Stokman
 Julia Sumner
 Mary Belle Tracy
 Eleanora Valle
 Nancy Volm
 Ann Young

Sophomore Class

OFFICERS

CATHERINE CONCANNON
President

ROBERTA DRAZEN
Vice-President

VIRGINIA SPEH
Secretary

MARY CATHERINE MORGAN
Treasurer



Standing—N. Volm, R. Kavanaugh, E. J. Kennedy. Back Row—M. Mudd, D. Cowan, R. Drazen, V. M. Fitzgibbon. Third Row—M. Ballman, L. Fitton, L. Lovely, C. Concannon, M. Robinson, A. Illig, R. Schneiderhahn, G. Reller, M. B. Tracy. Second Row—R. Perez, B. Bussmann, J. Sumner, R. Smugai, M. Helfer. First Row—A. McCann, A. Young, T. Hunt, M. C. Morgan.





Back Row—E. Didden, R. McKinney, S. Horning, J. Kleekamp, G. Mercier, C. Mahoney, P. Flynn, E. Walsh. Second Row—P. Hartmann, H. Muser, K. Kienstra, P. Kenoyer, A. R. Willard, E. J. Schulte, A. Effinger. First Row—H. J. Chickey, B. Hatting, M. Dutton.

Freshman Class



OFFICERS

PAT KENOYER	President
MARGARET MARY HARING	Vice-President
MARIE VLATKOVICH	Secretary
JEAN KLEEKAMP	Treasurer



Back Row—R. Rawie, B. Walsh, G. Madden, M. G. Kane, R. Ottens, K. Grant. Second Row—K. Riecken, D. J. Roeth, M. M. Haring, M. A. Henckler, E. O'Sullivan. First Row—L. Sandoe, P. Versen, M. Barbazan, M. F. Lottes.

Roster

Marcelle Barbazan

Helen Chickey

Madeleine Costa

Erna Didden

Maurine Dutton

Audrey Effinger

Patricia Flynn

Catherine Grant

Margaret Mary Haring

Peggy Hartman

Betty Hatting

Mary Ann Henckler

Sylvia Horning

Mary Grace Kane

Pat Kenoyer

Kathleen Kienstra

Jean Kleekamp

Mary Frances Lottes

Gloria Madden

Carol Mahoney

Rose Mary McKinney

Georgette Mercier

Catherine Mitchell

Helen Muser

Evelyn O'Sullivan

Ruth Ottens

Rosemary Rawie

Kathryn Riecken

Dorothy Jane Roeth

Leslie Sandoe

Emma Jane Schulte

Peggy Versen

Bette Walsh

Eileen Walsh

Ann Rita Willard

Angela Marie Whitener



Back Row—Marge Prinster, Mary Prinster, V. Douglas, L. Fitzsimmons, S. Paden, J. Oulvey. Third Row—P. Fay, M. Ferris, N. Maruca. Second Row—P. Hart, M. A. Kirchner, E. Haste, J. Biller. First Row—A. C. Green.

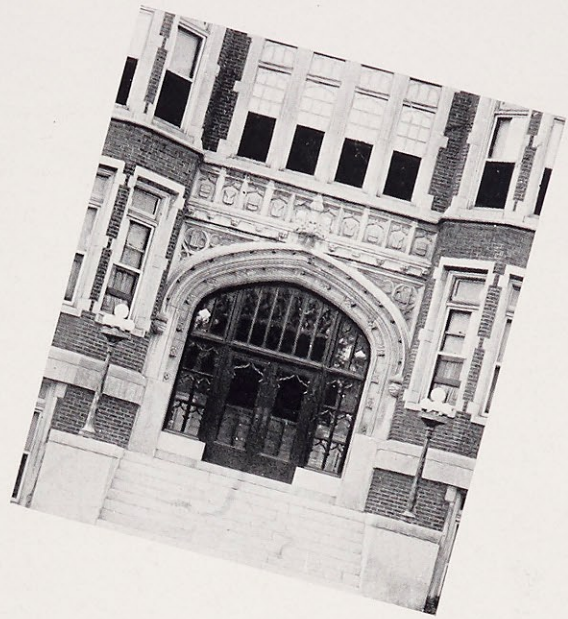
Roster

Mary Pat Almstead
 Mary Louise Bertman
 Judy Biller
 Ingeborg d'Alquen
 Jeanne Dolan
 Valerie Douglas
 Mary Margaret Fay
 Mary Ferris
 Lois Fitzsimmons
 Catherine Fleming
 Lola Garcia
 Ann Katherine Green

Peggy Hart
 Eileen Haste
 Mary Ann Healy
 Audrey Helfer
 Clare Hoffmeister
 Marianne Kirchner
 Eileen Krupp
 Helen Langdon
 Nancy Maruca
 Carmen Melendez
 Marguerite Milford
 Anna Naxara

Joan Oulvey
 Shirley Paden
 Mary Prinster
 Marjorie Prinster
 Marion Quigg
 Laurine Reiff
 Muriel Riengruber
 Edna Ann Schult
 Betty Marie Schweitzer
 Maxine Titus
 Marie Vlatkovich
 Lucille Walde

Freshman Class



Back Row—J. Dolan, L. Walde, L. Garcia, E. Krupp, L. Reiff. Second Row—A. Naxera, C. Hoffmeister, M. Vlatkovich, M. Quigg, M. A. Healy. First Row—A. Helfer, M. P. Almstead, C. Fleming, I. d'Alquen.



Shattered Dreams



Top—"Information, please."
 Third—"Eyes right!"
 Second—"Pictures, pictures!"
 Bottom—"Hold it!"

STAFF

SUSAN MONTI	Editor-in-Chief
JULIE-ANNE ROZIER	Assistant Editor
ROSEMARY NESTOR	Associate Editor
IRIS GARVEY	Associate Editor
MARY WHELAN	Business Manager
ROSIE MAE SPALDING	Advertising Manager
MARY EILEEN MANSFIELD	Circulation Manager

A hard luck story in three acts . . .
 Act I . . . Editor appointed . . . we rejoice with Susie . . . staff selected . . . we're flattered . . . summer spent in research . . . photographer to see . . . theme to be decided . . . back to school . . . all set . . . plans completed . . . pictures . . . rainy days . . . drooling hair . . . pictures again . . . more pic— . . . World here we come . . . best year book ever . . .
 Act II . . . War . . . that's all . . . Intermission . . . question: to have or not to have a year book . . . world conditions . . . sacrifice . . . Act III . . . one Memory Book coming up . . . economize . . . use your ingenuity . . . cram 100 pages into 32 . . . can't be done . . . select—choose . . . cut . . . cut . . . don't be sentimental about those swell pictures of the school . . . those pictures of— . . . work . . . slave . . . write-ups? . . . deadlines . . . think we're complaining . . . don't be silly . . . we loved it . . . Finis . . . we give you . . . our Memory Book . . . and yours.

Photography—Pat Parris, Photographer
 Lange Studio

Engraving—Central Engraving Company

Printing—Von Hoffmann Press

Democracy in Practice

STUDENT GOVERNMENT BOARD

HELEN RITTER	President
ROSIE MAE SPALDING	Vice-President
ANN O'DONNELL	Secretary
MARY EILEEN MANSFIELD	Treasurer

REPRESENTATIVES

Lorraine Maher	Susan Monti
Barbara Gleason	Catherine Concannon
Marion Klees	Margaret Knecht
Catherine O'Regan	Mary Frances Lottes
Virginia Daly	Patricia Kenoyer

They rule . . . the Board plans and suggests . . . the Association decides . . . an honor to be a Board member . . . student representatives and two deans comprise Board . . . weekly association meetings compulsory . . . vote on all important problems . . . individual ideas respected . . . students avail themselves of opportunity to express their views . . . spirited arguments customary . . . no bloodshed tho' . . . Association publishes Campus Guide—book of rules and regulations . . . freshmen learn it in no time—they are told . . . Student Government Association sponsors all big social events . . . Freshman Week . . . teas . . . Big Sister-L'il Sister Party . . . and vice-versa . . . May Day . . . parties . . . very active Board . . . raring-to-go association members . . . at present applying for membership in National Federation of Catholic College Students.



Top—"The Board in session."

Third—"Tea for two, our parents and us."

Second—"The officers relaxing—boogie woogie."

Bottom—"Time was—we had cokes."



Classical Club Officers—D. Rakers, President; M. Neville, Vice-President; M. Robinson, Secretary-Treasurer.
 Spanish Club Officers—E. Davila, President; D. McDonnell, Secretary; M. Colburn, Treasurer.
 French Club Officers—M. Finke and C. Beine, Presidents; M. A. Lingner, Secretary-Treasurer.
 Chemical Biology Club Officers—L. Knese, President; R. Brennan, Vice-President; D. Cantalin, Secretary-Treasurer.

Going Back B. C.

Students delve into antiquity . . . Greece and Rome . . . the ancients their life, history and civilization . . . interest in philosophy . . . Climax!!! Coming forward A. D. . . . spring . . . tea . . . fun . . . with St. Louis U. Classical Club.

South of the Border

Good neighbor policy fostered . . . movie of Mexico brings Spanish color to Webster . . . tropical flowers . . . bullfights . . . sombreros and mantillas . . . North and South unite on Pan American Day . . . address given by Rev. J. Bannon, S.J., specialist in Latin American field.

Vive La France

The French . . . what they do . . . how they speak . . . from college girls to French mademoiselles . . . songs . . . games . . . spelling bees . . . all in French . . . Dr. Donovan discusses "Political Situation in France of Today" . . . **La Voix**, sees all, tells all, in French!

Scientifically Speaking

Test tubes . . . microscopes . . . acids . . . frogs . . . long hours in lab . . . wiggling worms . . . squealing girls . . . practical knowledge from papers at meetings . . . Plastic Exhibition . . . tour through Anheuser-Busch Brewery . . . atoms forgotten at picnic in May.

Vim, Vigor and Vitality

Health personified . . . tennis tournament . . . exciting basketball games . . . bowling . . . ping-pong . . . swimming . . . archery . . . riding . . . posture contest . . . winning beauties on parade at fashion show . . . high school and college play days.

Music Hath Charm

From Bach to Victor Herbert . . . from "William Tell" to "Stout-hearted Men" . . . Musical blendings . . . an outlet for hidden musical talents . . . their accompaniment at . . . assemblies . . . Open Forums . . . plays . . . Baccalaureate! . . . progress under the baton of Angela Whitener.

Voices in Song

In the choir Gregorian Chant . . . careful guidance of Mary Elizabeth . . . loads of spirit . . . their voices charm . . . in Assemblies . . . Christmas caroling . . . on the air . . . Webster and St. Louis U. Glee Club "get-together."

Modern Thespians

Long rehearsals . . . cokes between scenes . . . dinners at the Dairy . . . the patience of Job in Mrs. Sankey and Mr. McClain . . . lights . . . paint brushes . . . scenery . . . modern production "Danger! Girls Working" . . . 18th century England comes with "The Rivals" . . . the ever-awaited-for Shakespearean production in the Spring . . . "As You Like It."



Athletic Association Officers—B. Burke, President; M. Klees, Vice-President; J. Greenslade, Secretary; R. Perez, Treasurer.

Orchestra Officers—S. Schultz, President; E. Jarvis, Secretary-Treasurer.

Choral Club Officers—M. Baker, President; A. Steinlage, Vice-President; R. Brennan, Secretary-Treasurer.

Loretto Players Officers—M. Fitzgibbon, President; M. E. Baker, Vice-President; M. Kientzy, Secretary; M. Finke, Treasurer.



Ave Maria

Children of Mary . . . true Catholic action . . . personal holiness through sacrifice . . . devotion to Our Lady, Our Queen . . . Mothers join us in Sodality Mass and Breakfast . . . Christ, Our King . . . we honor Him on His feast day—lay our "hearts" in flowers at His feet . . . Christmas—the fun of giving—the Babe of Bethlehem . . . the joy of doing Christ's work . . . holly-trimmed Christmas baskets . . . First Friday . . . Missa Recitata . . . breakfast in "caf" . . . Solemnity—retreat . . . our life, a prayer from morn' till night . . . Father Guyot points the way . . . Retreat over—new slant on life . . . students lend aid to "the boys" with perpetual adoration for peace . . . Lent—individual classes sponsor meetings . . . Sodality May Day . . . New Prefect crowns Our Lady.

They Cover The Earth

Catholic Students Mission Crusade . . . charity for all . . . every student a missionary . . . membership in Propagation of the Faith . . . Christmas—a member + a beard + toys + food = Webster's Santa Claus . . . Father Glennon, army chaplain . . . our chance to be patriotic . . . donations—rosaries . . . prayer books . . . medals . . . pamphlets . . . all for men in service . . . March 16, Msgr. M. K. Carroll receives \$150 for Propagation of the Faith . . . box in colonnade constant reminder for stamp collection . . . 100's saved . . . remembered Maryknoll . . . study in black and white . . . First Communion at St. Malachy's . . . Webster's proud "dressmakers" attend . . . unselfishness . . . perseverance . . . indomitable spirit—our president, Mary Catherine.

Sodality Officers—C. O'Regan, Prefect; L. Knese, Vice-Prefect; V. M. Fitzgibbon, Secretary; R. Gauvin, Treasurer. Class Representatives—M. Neville, R. Nestor, M. Robinson, R. Rawie.

C. S. M. C. Officers—M. C. Phelan, President; T. Hunt, Vice-President; C. Carroll, Secretary-Treasurer. Class Representatives—D. Cantalin, R. Schneiderhahn, K. Grant, R. Brennan.

Musical Moments Via Recordings

Learning . . . knowing . . . appreciating . . . good music—the purpose of the Music Guild . . . membership optional . . . largest membership in years . . . informal monthly meetings . . . chamber music studied this year . . . girls relax and knit while listening to the strictly classic style of Mozart and Haydn . . . the depth and aggressive spirit of Beethoven . . . the romanticism of Schubert . . . musical treats planned by Guild to foster cultural appreciation on the part of student body . . . open meetings . . . Guild entertains distinguished artist, Madame Kurenko . . . Guild members delighted to give tea in her honor . . . research on life and style of composers . . . results presented at meetings.

World Situation Thru Student Eye

Informal evening meetings . . . chief policy: freedom of speech . . . world-shaking discussions . . . honored with membership in Carnegie Foundation for International Peace . . . Doctor Donovan and President, Marie Neville, select topic for year—International Economy . . . six phases of topic covered by papers prepared and presented by students . . . Basic War Materials and Their Importance, Latin America and Its Economic Importance to the Democracies and Dictatorships, Japan and Its Problem of Far Eastern Expansion, Nazi Economy, U. S. and Her Plans for Post-War Economy, Economics of the Christian State . . . Fortnightly Summary of News offers abundance of material on current events . . . newest books on international affairs received as gifts from Carnegie Foundation.



Music Guild Officers—E. Jarvis, President; S. Schultz, Vice-President; M. C. Morgan, Secretary-Treasurer.

International Relations Club Officers—M. Neville, President; D. Rakers, Vice-President; M. C. Phelan, Secretary-Treasurer.



The Cognoscenti

The best that is written lands in **Loretine** . . . oldest publication of Webster . . . literary quarterly . . . poetry . . . ingenious writings . . . student contributors . . . staff finds hard work the price of fame . . . the uninitiated pity Ciel and Co. . . little do they know of the "cutting-up" parties—and pasting . . . themes this year: National Defense, Webster College Capitalized, Modern Poetry, Outstanding Members of the Loretto Order . . . distinguished guest writers . . . artistic ornamentation and latest book notes by Marie Neville . . . Marlene Ruemping's "Just Among Ourselves" . . . Eloise Jarvis covers the music world in "Cadences" . . . what goes on "Near and Far" by Mary Catherine Phelan . . . Maggie Ward's "Exchanges" . . . contributions from Nerinx Hall by Mary Kilcoyne.

Fourth Estaters

22 candles on the **Web's** birthday cake this year . . . from mimeographed sheet to four-page paper . . . splurges twice a year with six pages, at Christmas and Graduation . . . staff goes crazy bi-monthly at the deadline on the 2nd and 4th week . . . reporters show no scruples . . . must be careful about whispers because there are "Echoes in the Halls" . . . also danger of being "Caught in the Web" . . . paper aims to present what goes on "Around the Colleges" in "Athletics" and "Sodality Notes" as well as latest news flashes . . . student opinion candidly expressed . . . pictures, too . . . Policy: student appeal.

Loretine Staff—Editor, C. Beine; Assistant Editor, D. Rakers; Associate Editors, V. Leicht, M. Ruemping; Business Manager, R. Brennan; Circulation Manager, M. E. Baker; Advertising Manager, M. Finke.

Web Staff—Editor, M. Neville; Assistant Editor, M. C. Phelan; Associate Editor, A. Callahan; Business Manager, M. A. Kilkenny; Circulation Manager, M. E. Baker; Column Editor, R. Reisert; Feature Editor, C. Beine; Athletics, R. Brennan.