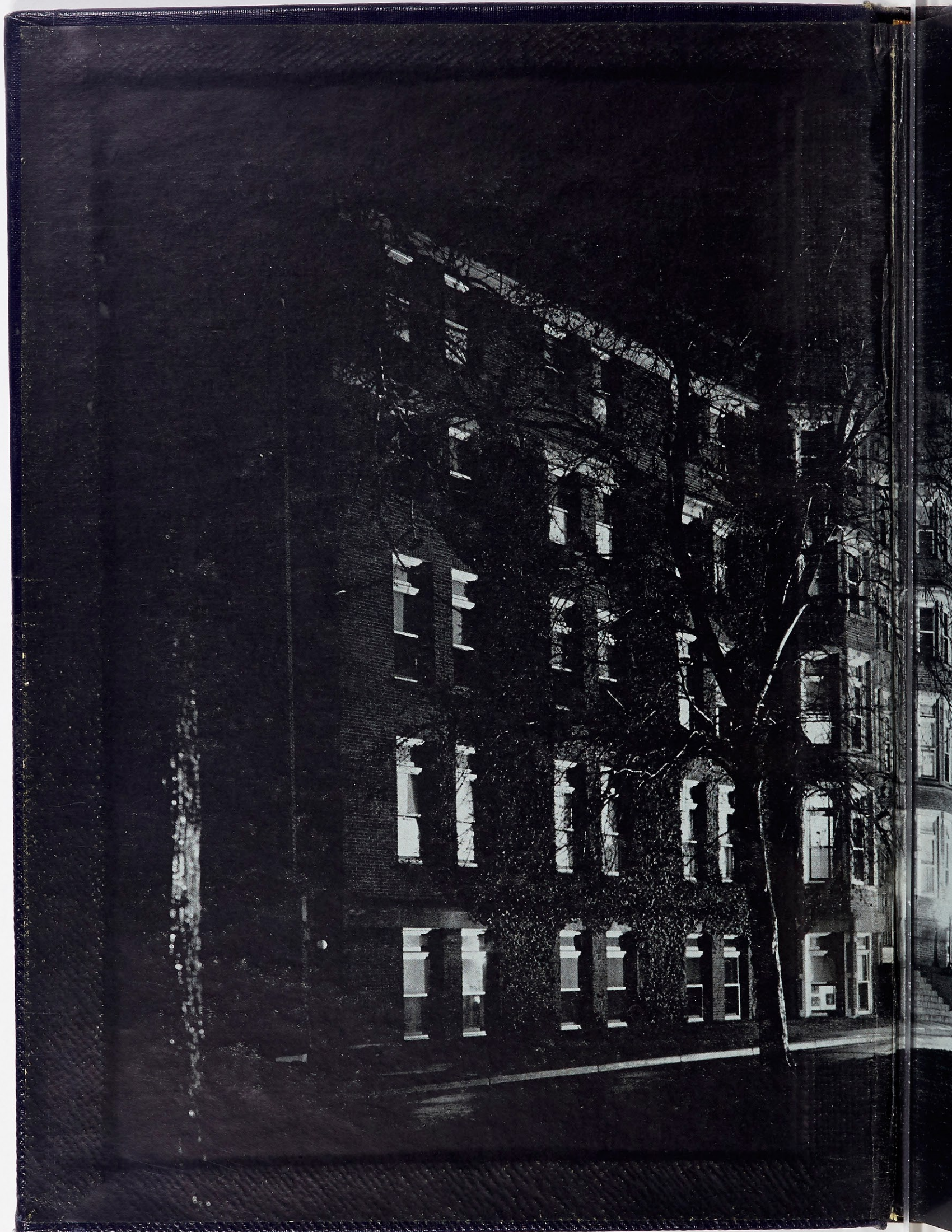


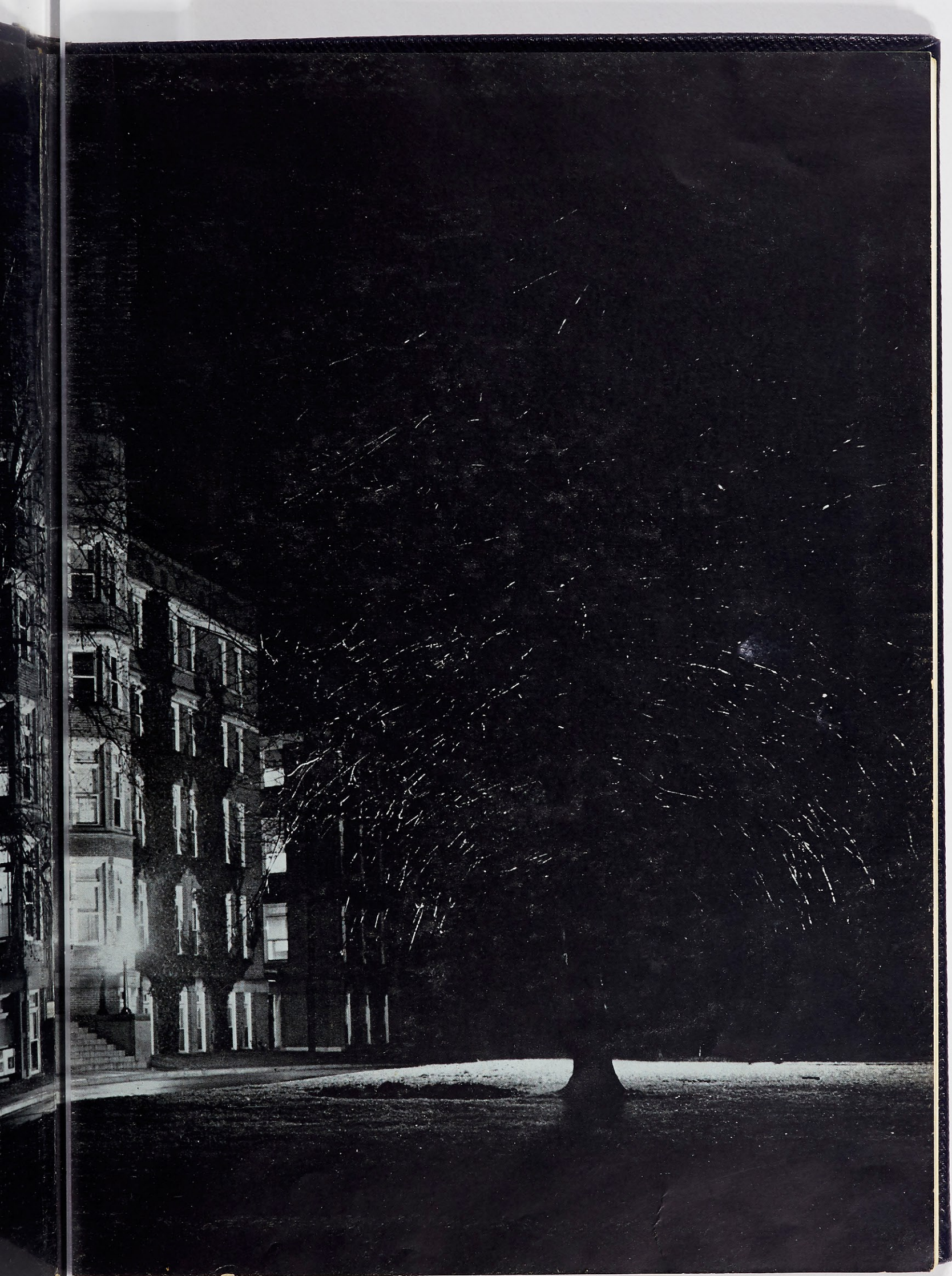


Lauretunum

NINETEEN FORTY ONE

25th
ANNIVERSARY





*Field Secretary
Registrar's Office*



The Lauretanum


1941

Webster's Twent

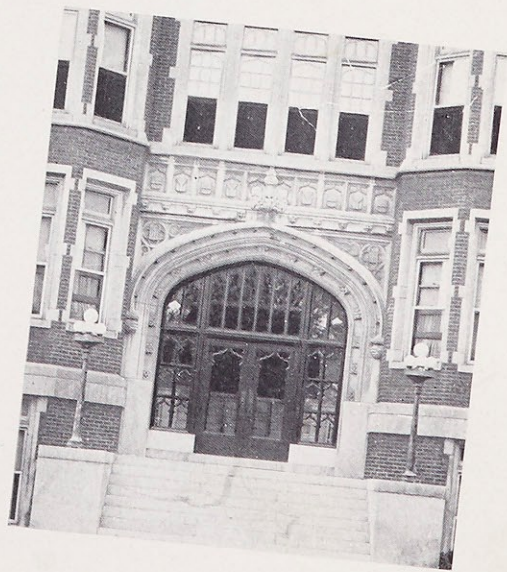




Twenty Fifth Year



The Lauretanum
presented annually by
members of the Junior
Class at Webster Col-
lege, Webster Groves,
Missouri.



Presented By

LORRAINE MAHER

Editor-in-Chief

MARIE FINKE

Assistant Editor

BARBARA GLEASON

Business Manager

ANN O'DONNELL

Advertising Manager

BETTY BURKE

Sports Editor

JUNE KAVANAUGH

Circulation Manager

RITA GAUVIN

Circulation Manager

Photography—
Sid Whiting Studio
Paul Piaget

Engraving—
Central Engraving Company

Printing—
Von Hoffmann Press

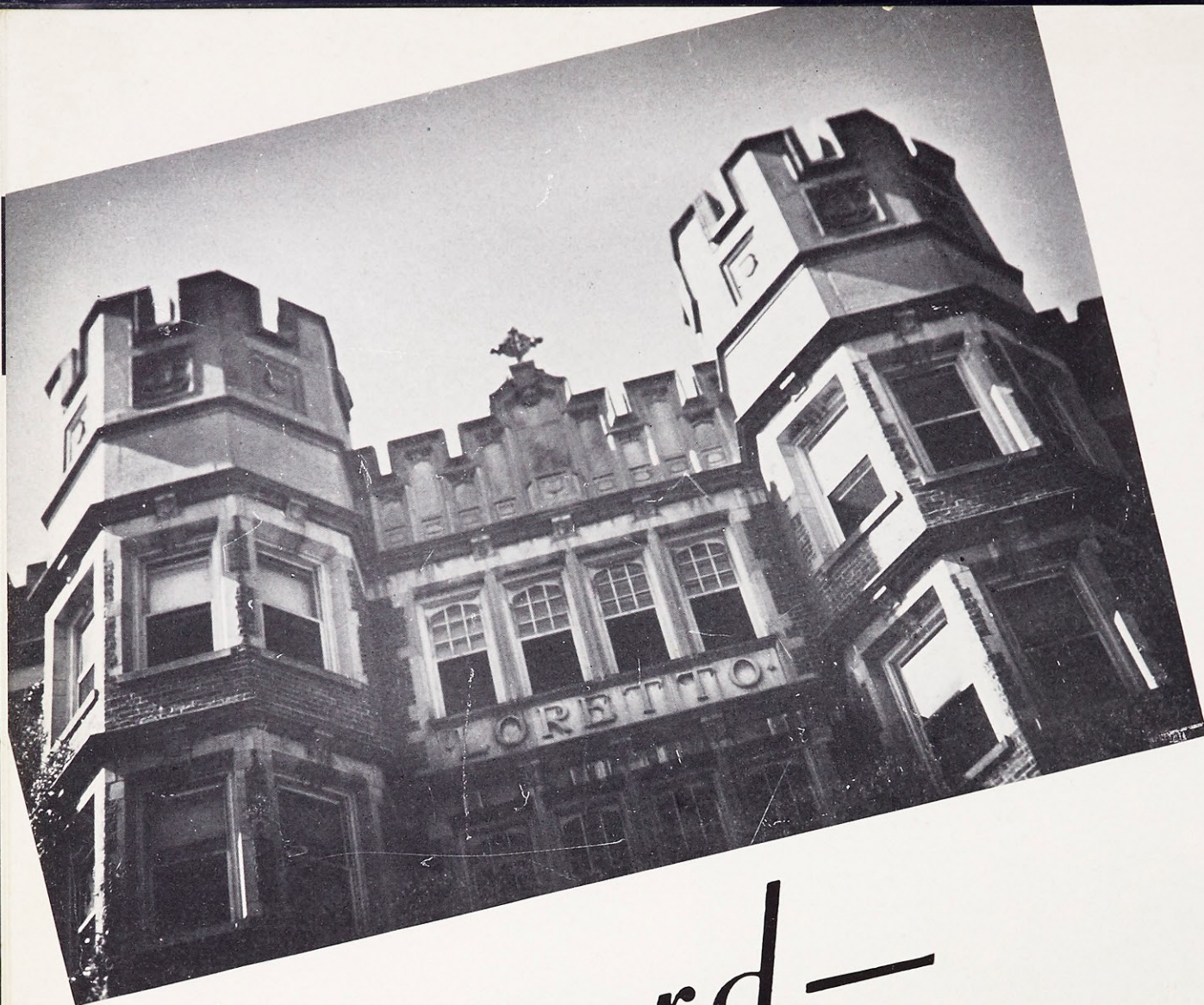
Binding—
Becktold Company



Dedication

To all the Sisters of Loretto, to all the lay members of the faculty, and to all the students who have been at Webster in the past twenty-five years this book is affectionately dedicated.





Foreword—

As it is fitting that all memorable events be chronicled, and as all students experience in their school life moments which are of great importance to them, we, the editors of the *Lauretanum*, have endeavored in these pages to record faithfully, indelibly, for all time, such moments in the student year 1940-1941.

Contents

CLASSES

SENIORS
JUNIORS
SOPHOMORES
FRESHMEN

ORGANIZATIONS

STUDENT GOVERNMENT
SODALITY
ARTS
SCIENCES

ACTIVITIES

MAY DAY
FORMAL DINNER
EDUCATIONAL TOUR
DRAMATICS

ATHLETICS

VARSIITY
ATHLETIC ASSOCIATION





Winter scene on
the back campus

Offices of Administration

George Francis Donovan, A. M., Ph. D.,
President

Sister Ann Francis McArdle, A. M.
Regent

Sister M. Georgetta Hoerrmann, A. M.
Dean

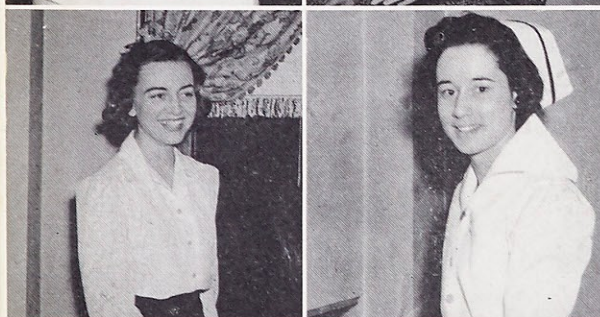
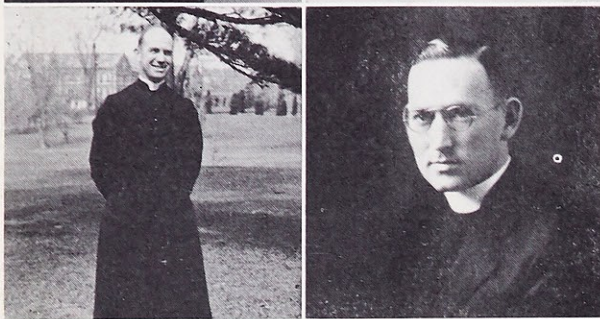
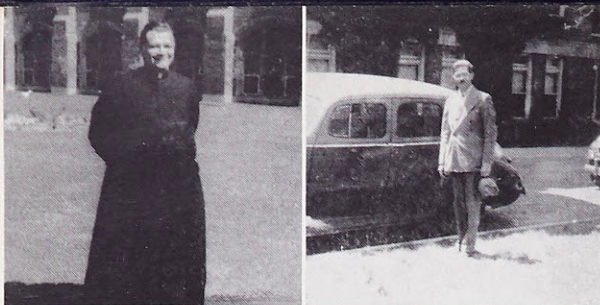
Sister Frances de Chantal McLeese, M. S.
Dean of Women

Sister M. Borromeo Hynes, A. M.
Registrar

Sister Teresa Agnes Tierney
Treasurer



Webster's President, Dr. George Francis Donovan



Reverend Thomas Navin, C. M., A. M.
Professor of Religion

Harold C. Ellison
Professor of Art

Reverend G. H. Guyot,
C. M., S. T. L., S. S. B.
Professor of Religion

Reverend John J. Taugher, C. M., S. T. L.
Professor of Philosophy

Harry Richard McClain, LL. B.
Instructor in Speech

John David Campbell, B. S., M. S.,
Cand. Ph. D.
Instructor in Biology

Moira Hayes, M. S.
Instructor in Chemistry

Mary Alma Fregeau, A. M.
Instructor in English

Charlotte Morehead, A. M.
Instructor in Speech and Education

Margaret Morrison, R. N.
Student Nurse

Paul A. Tredway, A. B.
Instructor in Journalism

Helen K. Pancerz, B. S., Phys. Ed.
Instructor in Physical Education

Christian Bonnet, LL. M.
Instructor in French

Mary E. Killian, A. M.
Instructor in Dietetics

Reverend Charles F. Convery,
C. M., S. T. D.
Professor of Philosophy

Reverend George C. Tolman,
C. M., S. T. D.
Professor of Religion

Mrs. Anna McClain Sankey, A. B.
Instructor in Dramatic Art

Fac

Faculty





Colonnade Through the Trees.

Faculty

Sister Mary Louise Beutner,
A. M., Cand. Ph. D.
Associate Professor of English and
Director of the Department

Christian Bonnet, LL. M.
Instructor in French

John David Campbell,
B. S., M. S., Cand. Ph. D.
Instructor in Biology

Sister Mary Paula Caretto, B. M.
Instructor in Voice

Sister Jean Carmel Cavanaugh,
A. M., Cand. Ph. D.
Instructor in English

Sister Mary Borgia Clarke,
A. M., Cand. Ph. D.
Professor in Mathematics and Director of the
Department

Sister Mary Harriet Condon, M. S.
Instructor in Biology

Reverend Charles F. Convery,
C. M., S. T. D.
Professor of Philosophy

George F. Donovan, A. M., Ph. D.
Professor of History and Director of the Department

Sister Mary Georgiana Ernst, A. B.
Instructor in English

Sister Mary Edmond Fern, A. M., Ph. D.
Professor of Classical Languages and
Director of the Department

Sister Mary Germaine Fogarty, B. S.
Instructor in Mathematics and Physics

Sister Isabelle Marie Foley, A. M.
Instructor in Latin

Mary Alma Fregeau, A. M.
Instructor in English

Sister Mary Adaline Gemoets, Mus. M.
Professor of Theory of Music and Director of the
Conservatory

Reverend G. H. Guyot,
C. M., S. T. L., S. S. B.
Professor of Religion

Sister Mary Roberta Hardesty, A. M.
Instructor in French

Moira Hayes, M. S.
Instructor in Chemistry



Faculty

Sister Mary Alphonsine Hentzen, B. M.
Instructor in Organ

Sister Mary Georgetta Hoermann,
A. M.
Instructor in Latin

Sister Mary Joecile Hunleth, B. M.
Assistant in Conservatory, Violin

Sister M. Borromeo Hynes, A. M.
Instructor in Education

Mary E. Killian, A. M.
Instructor in Dietetics

Harry Richard McClain, LL. B.
Instructor in Speech

Sister Frances de Chantal McLeese,
M. S.
Assistant Professor in Chemistry and
Director of the Department

Charlotte Morehead, A. M.
Instructor in Speech and Education

Sister Mary Dolorine Morrison,
A. M., Ph. D.
Professor of Speech and Director of the Department

Reverend Thomas Navin, C. M., A. M.
Professor of Religion

Sister Mary Ethelbert Owens, A. M.
Instructor of the Department and Director of the
Department of Modern Languages

Helen K. Pancerz, B. S., Phys. Ed.
Instructor in Physical Education

Mrs. Anna McClain Sankey, A. B.
Instructor in Dramatic Art

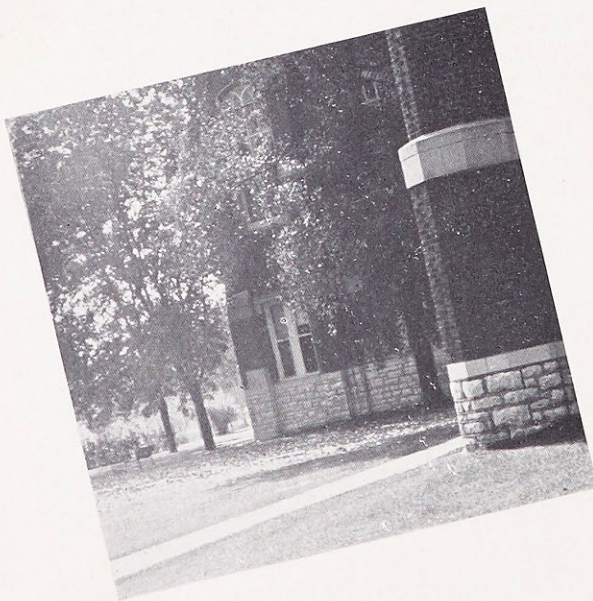
Reverend John J. Taugher, C. M., S. T. L.
Professor of Philosophy

Sister Mary Aubert Tennyly, A. M.
Instructor in History

Sister Mary Clotaire Thro,
A. B., B. S. in L. S.
Instructor in Library Science

Reverend George C. Tolman,
C. M., S. T. D.
Professor of Religion

Paul A. Tredway, A. B.
Instructor in Journalism



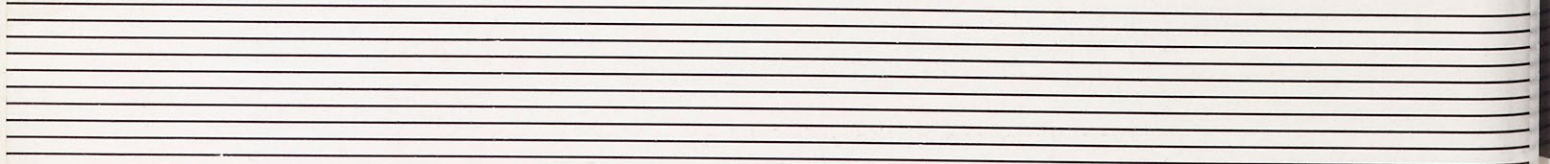


Front Entrance of the Administration Building.

Classes—

The primary function of a Catholic college, unlike that of a technical training school, is the development and integration of the spiritual and intellectual powers of its students. Whatever else it may do or attempt to do can only be secondary and incidental if it will attain the end for which it was instituted. This objective must be kept clearly in mind both by the college and the students entrusted to its care. For if it is lost sight of by the school, all educational efforts will be misdirected and often, though unintentionally, pernicious. If it is ignored by the student, the student is likely to confuse means and end, to wander off the course and never, unless by some happy chance, reach a proper destination.

This, then, is the educative ideal: the fullest possible development of individual intellect and the completion of human nature in all its faculties.



Virginia Riehemann



Saint Louis, Missouri
A. B. in English and
Latin

President of Class, '41.
Student Government Board, '40, '41; Secretary, '41.
S.S.C., '40, '41.
Sodality, '38, '39, '40, '41.
Drum Bugle Corps, '38, '39, '40.
Assistant Editor Loretine, '41.
Web Staff, '40, '41.
Secretary of Class, '38.
Winner of History Award, '40.
Le Cercle Francais, '38, '39, '40, '41.
Classical Club, '40, '41; Vice-President, '41.
International Relations Club, '40, '41.
Chemistry-Biology Club, '38, '39.
Athletic Association, '38, '39, '40, '41.
C.S.M.C., '38, '39, '40, '41.
St. Louis University Classical Club, '40 '41.
Vodvil, '40.

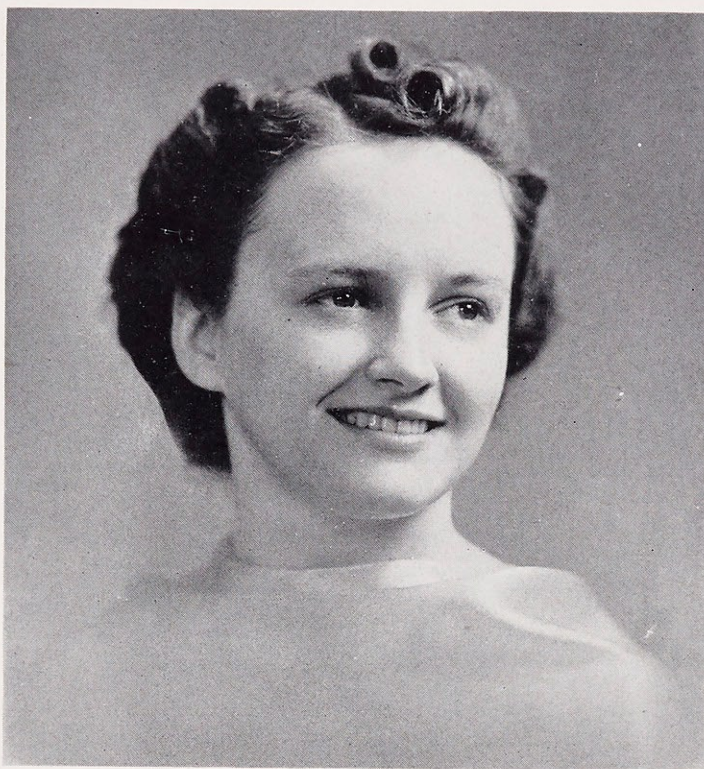


S E N I O R

T w e n t y - F i f t h Y e a r

Peggy Quick

University City,
Missouri
A. B. in English and
History



Sodality, '38, '39, '40, '41.
S.S.C., '39, '40.
Editor Loretine, '41.
Web Staff, '40.
C.S.M.C., '38, '39, '40, '41.
International Relations Club, '40, '41; Presi-
dent, '41.
Math-Physics Club, '40, '41; Vice-President,
'41.
Choral Club, '38, '39, '40, '41.
Student Government Board, '40, '41.
Vodvil, '38, '39, '40, '41.
Athletic Association, '38, '39, '40, '41.
Le Cercle Francais, '38.
Chemistry-Biology Club, '38, '39.



C L A S S

Gloria Ellen Meder



Kirkwood, Missouri
A. B. in Latin and
Spanish

Athletic Association, '38, '39, '40, '41;

Secretary, '39;

Vice-President, '40;

President, '41.

Advertising Manager Loretine, '41.

Varsity Basketball, '38, '39, '40, '41.

Class Basketball, '38, '39, '40, '41.

Class Volleyball, '38, '39, '40, '41.

Vodvil, '38, '41.

Spanish Club, '38, '39, '40, '41.

Classical Club, '39, '40, '41.

St. Louis University Classical Club, '39, '40,
'41.

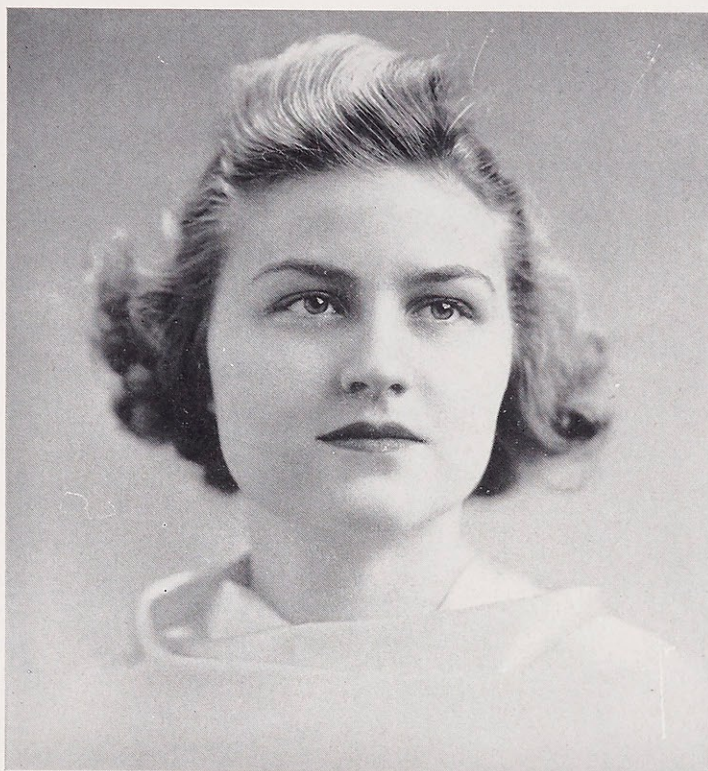


S E N I O R

T w e n t y - F i f t h Y e a r

Clare Mary Jacobsmeyer

Shrewsbury,
Missouri
B. S. in Chemistry
and Dietetics



Sodality, '38, '39, '40, '41.

C.S.M.C., '38, '39, '40, '41;

Class Representative, '40, '41.

Athletic Association, '38, '39, '40, '41.

Chemistry-Biology Club, '38, '39, '40, '41.

Le Cercle Francais, '38, '39.

Choral Club, '40, '41.

Music Guild, '40, '41.

Vodvil, '39, '41.



C L A S S

Ann Hof



Saint Louis, Missouri
A. B. in English and
Latin

Sodality, '38, '39, '40, '41; Vice-Prefect, '40;
Prefect, '41.
Who's Who, '40, '41.
S.S.C., '40, '41.
Student Government Board, '38, '39, '40, '41;
Vice-President, '41.
Class President, '40.
Advertising Manager Lauretanum, '40.
Loretine Staff, '41.
C.S.M.C., '38, '39, '40, '41.
Vodvil, '38, '39, '40, '41.
Web, '40, '41.
Athletic Association, '38, '39, '40, '41.
Choral Club, '38, '39, '40, '41.
International Relations Club, '40, '41.
St. Louis University Classical Club, '40, '41.
Classical Club, '40, '41.
Spanish Club, '38, '39.



S E N I O R

T w e n t y - F i f t h Y e a r

Eugenia Louise Harter

Saint Louis, Missouri
A. B. in Latin and
Spanish



Editor Web, '41.
Classical Club, '39, '40, '41; President, '41.
Secretary St. Louis Classical Club, '41.
Spanish Club, '39, '40, '41.
Vodvil, '38, '40.
Sodality, '39, '40, '41.
Athletic Association, '38, '39, '40, '41.
C.S.M.C., '39, '40, '41.



C L A S S

Dorothy Marie Ottens



Saint Louis, Missouri
B. S. in Chemistry
and Biology

S.S.C., '41.
Sodality, '38, '39, '40, '41.
C.S.M.C., '38, '39, '40, '41.
Chemistry-Biology Club, '38, '39, '40, '41;
 Secretary-Treasurer, '40;
 Vice-President, '41.
Class Vice-President, '40, '41.
Athletic Association, '38, '39, '40, '41.
Le Cercle Francais, '38, '39.
Loretine Staff, '41.
Class Volleyball, '38, '39, '41.
Class Basketball, '38, '39.
Choral Club, '41.
Vodvil, '39, '41.



S E N I O R

T w e n t y - F i f t h Y e a r

Marie Paule Rajotte

Province of Quebec,
Canada
B. S. in Chemistry
and English



Le Cercle Francais, '40.
Spanish Club, '41.
International Relations Club, '41.
Editor "La Voix", '41.
Tennis, '41.



C L A S S

Mary Jane McAuliffe



Saint Louis, Missouri
Ph. B. in Speech

Class Treasurer, '41.
Business Manager Web, '41.
Secretary Loretto Players, '41.
Vodvil, '38, '40, '41; Ticket Chairman, '41.
Sodality, '38, '39, '40, '41.
C.S.M.C., '38, '39, '40, '41.
Choral Club, '38, '39, '40, '41.



T w e n t y - F i f t h Y e a r

Eileen Reid

Saint Louis, Missouri
Ph. B. in Speech



Le Cercle Francais, '38, '39.
Choral Club, '38, '39, '40, '41.
Sodality, '38, '39, '40, '41.
C.S.M.C., '38, '39, '40, '41.
Vodvil, '38, '39, '40, '41.
Assistant Dance Director, '39;
Co-Dance Director, '40;
Vodvil Director, '41.
Loretto Players, '39, '40, '41; President, '41.
Lauretanum Staff, '40.
Web Staff, '40.
Class Treasurer, '39.
Athletic Association, '38, '39, '40, '41.
Varsity Basketball, '38, '39, '40, '41.
Tennis Championship, '41.
Who's Who, '41.

C L A S S

Cecilia Theresa Allhoff



Saint Louis, Missouri
B. S. in Music

French Club, '38, '39.
Music Guild, '38, '39, '40, '41; Vice-President,
'40.
Sodality, '38, '39, '40, '41.
C.S.M.C., '38, '39, '40, '41.
Orchestra, '38, '39, '40, '41;
 Secretary-Treasurer, '38;
 Vice-President, '39;
 Secretary-Treasurer, '41.
Business Manager Laurentanum, '40.
Chemistry-Biology Club, '39.
Athletic Association, '38, '39, '40, '41.



T w e n t y - F i f t h Y e a r

Elizabeth Furi

Saint Louis, Missouri
B. S. in Mathematics
and English



Sodality, '38, '39, '40, '41.

C.S.M.C., '38, '39, '40, '41.

Class Secretary, '41.

Loretine Staff, '41.

Web Staff, '40, '41.

Chemistry-Biology, '38, '39.

Mathematics Club, '39, '40, '41; President, '40,
'41.

Le Cercle Francais, '38, '39.

Athletic Association, '38, '39, '40, '41.

Class Volleyball, '38, '39, '41.



C

L

A

S

S

Helene Knapp



Saint Louis, Missouri
B. S. in Chemistry
and Dietetics

Class Representative on Student Government
Board, '41.

Class Treasurer, '40.

Chemistry-Biology Club, '38, '39, '40, '41;

Vice-President, '40;

President, '41.

Le Cercle Francais, '38, '39.

Sodality, '38, '39, '40, '41.

C.S.M.C., '38, '39, '40, '41.

Vodvil, '41.

Athletic Association, '38, '39, '40, '41.

Drum Bugle Corps, '38, '39, '40.

E. A. Dunne Competitive Philosophy Award,
'40.

Loretine Business Manager, '41.



S E N I O R

T w e n t y - F i f t h Y e a r

Marie Jo Schuessler

Springfield, Illinois
B. S. in Chemistry
and Dietetics

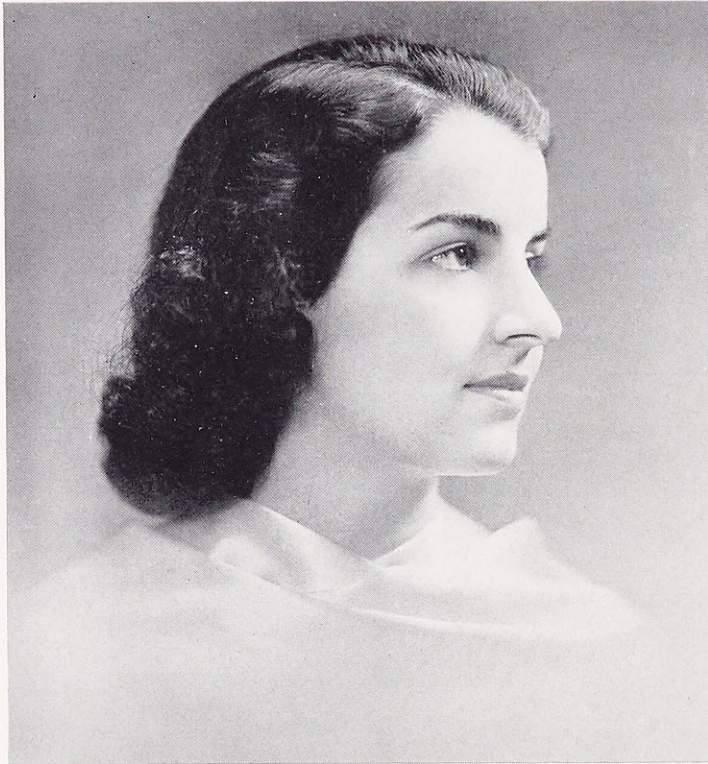


Sodality, '40, '41.
C.S.M.C., '40, '41.
Athletic Association, '40, '41.
Chemistry-Biology Club, '40, '41.
Riding Club, '41.
Loretine, '41.



C L A S S

Ruth Frances Rummelhart



Colorado Springs,
Colorado
B. S. in Music

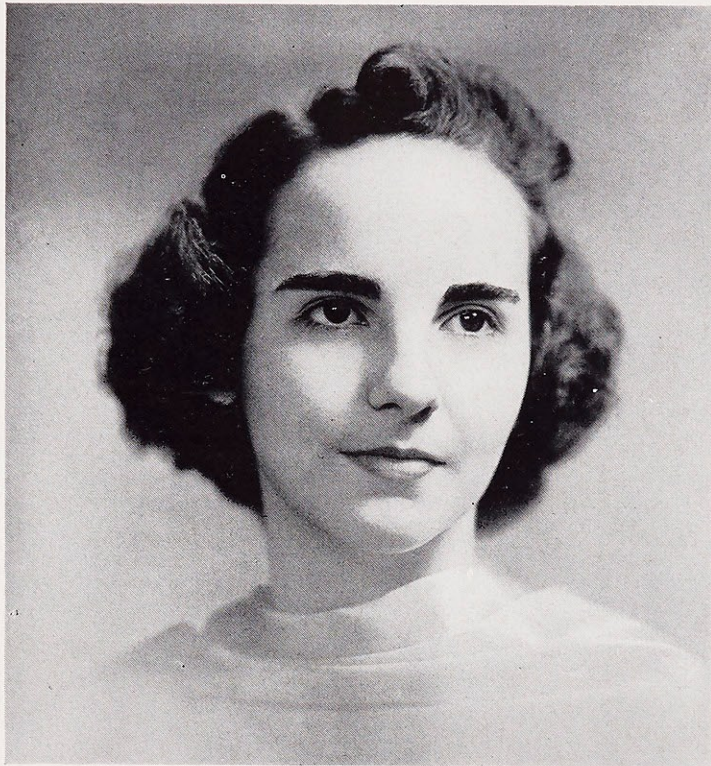
Vice-Prefect S.S.C., '41.
May Queen, '40.
May Maid, '38.
Sodality, '38, '39, '40, '41.
C.S.M.C., '38, '39, '40, '41.
House Committee, '41.
Loretine Staff, '41.
Vodvil, '39, '40, '41.
Le Cercle Francais, '38, '39.
Orchestra, '38, '39, '40, '41.
Music Guild, '38, '39, '40, '41; President, '40, '41.
Choral Club, '38, '39, '40, '41; Vice-President,
'39.
Athletic Association, '38, '39, '40, '41.
Cheerleader, '38, '39.
Who's Who, '41.



T w e n t y - F i f t h Y e a r

Jane Frances Hyde

Saint Louis, Missouri
B. S. in English

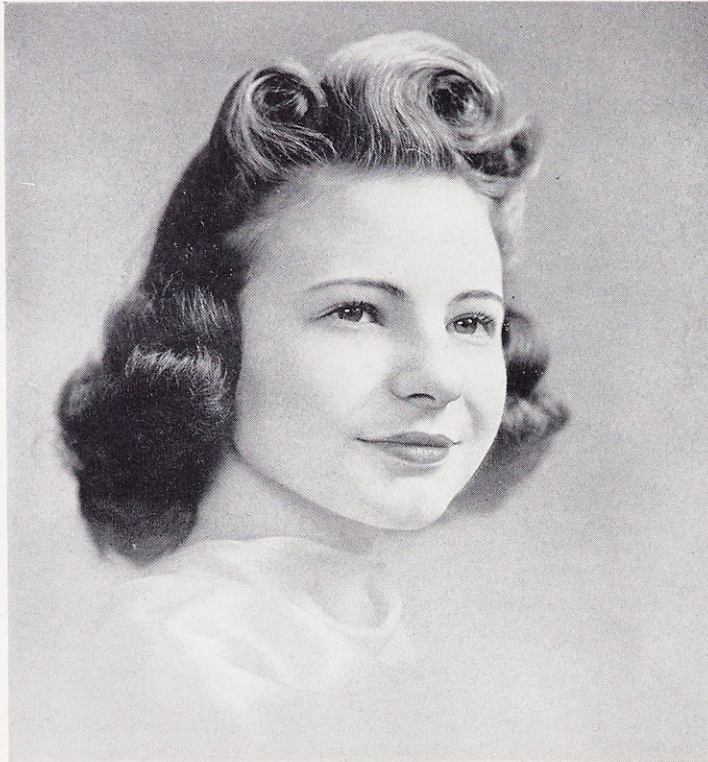


Student Government President, '41.
Student Government Treasurer, '40.
Student Government Representative, '40.
Editor Laurentanum, '40.
May Maid, '39.
Sodality, '38, '39, '40, '41.
S.S.C., '41.
Vodvil, '38, '39, '40, '41.
Athletic Association, '38, '39, '40, '41.
Varsity Basketball, '38, '39, '40, '41.
Class Basketball, '38, '39, '40, '41.
Class Volleyball, '38, '39, '40, '41.
Loretto Players, '39, '40, '41.
Web, '41.
Choral Club, '39, '40, '41.
Who's Who, '41.



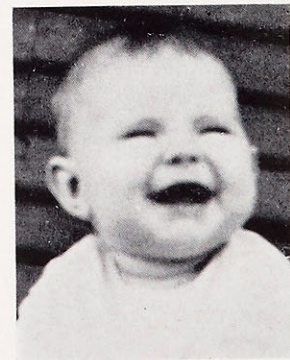
C L A S S

Betty Hellinghausen



Breckenridge, Texas
Ph. B. in English.

Student Government Board, '41.
House President, '41.
May Maid, '40.
Sodality, '38, '39, '40, '41.
S.S.C., '40, '41.
C.S.M.C., '38, '39, '40, '41.
Lauretanum Staff, '40.
Web Staff, '40, '41.
Vodvil, '38, '39, '40, '41.
Athletic Association, '38, '39, '40, '41.
Class Basketball, '39.
Class Volleyball, '40.
Choral Club, '39, '40, '41.
Chemistry-Biology Club, '40, '41.



S E N I O R

T w e n t y - F i f t h Y e a r



IN MEMORY OF

MARGARET GRAF

A MEMBER OF THE SOPHOMORE CLASS,
WHO DIED APRIL 17, 1941



M. Klees, H. Thurmond, C. Carroll, M. Ward.

Junior Class

OFFICERS

CATHERINE CARROLL
President

HELEN THURMOND
Vice-President

MARION KLEES
Secretary

MARGARET WARD
Treasurer



Standing: M. A. Kilkenny, M. Kientzy, R. Gauvin, L. Maher.
Seated: D. Rakers, V. Chapman, C. Beine, M. C. Phelan, A. O'Donnell, B. Huelsman, C. Carroll,
C. McCann, M. Neville.

T w e n t y - F i f t h Y e a r

ROSTER

MARY ELIZABETH BAKER
CECILIA BEINE
ROSALIE BRENNAN
BETTY BURKE
CATHERINE CARROLL
VIRGINIA CHAPMAN
MARIE FINKE
MARY LOUISE FITZGIBBON
RITA JO GAUVIN
BARBARA GLEASON
MARIAN GRANT
BEATRICE HUELSMAN
JUNE JUDGE KAVANAUGH
MARIE KIENTZY

MARY ADELINE KILKENNY
MARION KLEES
LORRAINE KNESE
LORRAINE MAHER
CHARLOTTE McCANN
MARIE NEVILLE
ANN O'DONNELL
CATHERINE O'REGAN
MARY CATHERINE PHELAN
DOLORES RAKERS
HELEN RITTER
SARA SHULTZ
HELEN THURMOND
MARGARET WARD

Standing: M. Grant, M. L. FitzGibbon, M. Klees, C. O'Regan, M. Finke.
Seated: J. Kavanaugh, H. Ritter, B. Burke, M. E. Baker, M. Ward, R. Brennan, H. Thurmond,
B. Gleason, L. Knese.



Sophomore Class

OFFICERS

ROSIE MAE SPALDING
President

SARAH LOUISE SPALDING
Vice-President

EDNA CATHERINE AHERN
Secretary

ROSEMARY NESTOR
Treasurer



R. Nestor, S. L. Spalding, R. M. Spalding, E. C. Ahern.



Standing: S. Monti, A. Drake, H. M. Stephenson, M. Born, B. Dischinger, G. Reisch.
Seated: M. Stuppy, S. L. Spalding, M. J. Barnes, D. Ardoyno, C. Casey, B. Walsh, E. C. Ahern,
M. Graf, M. A. Lingner.

T w e n t y - F i f t h Y e a r

R O S T E R

EDNA CATHERINE AHERN
DOLORES ARDOYNO
MARTHA JANE BARNES
MARY AGNES BARRY
MILDRED BORN
DOROTHY BUERGLER
DOROTHY CANTALIN
CECILIA CASEY
JUDY CHAPMAN
VIRGINIA DALY
BARBARA DISCHINGER
ANNETTE DRAKE
RUTH FEIGENBAUM
LILLIAN GALLAGHER
IRIS GARVEY
MARGARET GRAF
ROSEMARY GULLEDGE
MARJORIE HAMBROUGH
EILEEN HANLON

PHYLLIS HILLEMAYER
ELOISE JARVIS
MILDRED KENNEDY
MARY AGNES LINGNER
FLORENCE McKINLAY
MARY EILEEN MANSFIELD
SUSAN MONTI
ROSEMARY NESTOR
ANITA POTTHAST
BETTY JEANNE PRATTE
GERALDINE REISCH
JULIE-ANNE ROZIER
PEGGY SHERIDAN
ROSIE MAY SPALDING
SARAH LOUISE SPALDING
HELEN MARIE STEPHENSON
MARGARET STUPPY
MARYNELLE TYRRELL
BETTY WALSH

MARY WHELAN

Standing: L. Gallagher, R. Nestor, M. Hambrough, E. Hanlon, D. Buergler, M. Kennedy.
Seated: V. Daly, P. Sheridan, M. Tyrrell, R. M. Spalding, I. Garvey, M. E. Mansfield, B. J. Pratte,
M. A. Barry, M. Whelan, P. Hillemeier, E. Jarvis, A. Potthast, J. Chapman, R. Gulledege, J. A. Rozier.



1 9 4 1 — W e b s t e r ' s

Freshman Class



Standing: R. Schneiderhahn, R. Smugai, U. M. McGrath, E. J. Kennedy, G. Reller, P. Reggini,
J. M. Sumner, B. M. Dobyms, M. Mudd.
Seated: M. Kloepfel, V. Knese, D. Kelly, M. Riehemann, M. Helfer, K. McDonald, M. Fink,
M. B. Tracy, B. Schmuke, L. Keupper.

ROSTER

MARGARET BALLMAN

NORMA BURNWORTH

BERNICE BUSSMANN

EVELYN CARTER

MARIE COLBURN

CATHERINE CONCANNON

DORIS COWAN

MARTHA CRAVEN

ENID DAVILA

BETTY MAY DOBYNS

ROBERTA DRAZEN

VIRGINIA MAE DUERR

JEAN MARIE FAHY

ETERVINA FIGUEROA

MARION FINK

LOUISE FITTON

VIOLA MAE FITZGIBBON

ADELINA GARCIA GALL

T w e n t y - F i f t h Y e a r



Standing: A. G. Gall, E. Davila, E. Figueroa, S. Lawton, D. Fitton, C. Vetter, E. Valle, J. Rizzi,
 J. M. Fahy, D. Roybal, A. Hanlon.
 Seated: M. Ruemping, J. Rollison, D. McDonnell, M. C. Morgan, V. L. Mains, N. Burnworth,
 M. L. Garnier, M. A. Grennan, M. Colburn.

OFFICERS

MARY LOUISE GARNIER

AGNES GEARY

MARGARET ANN GRENNAN

AMY HANLON

MARITA HELFER

VALERIE HORAN

THOMASINE HUNT

AUDREY ILLIG

JOSEPHINE KABBES

RUTH KAVANAUGH

ELLEN JANE KENNEDY

CATHERINE CONCANNON
 President

KEVIN McDONALD
 Vice-President

AMY HANLON
 Secretary

BETTE MAYER
 Treasurer



A. Hanlon, C. Concannon, K. McDonald.



Standing: C. Concannon, R. Drazen.
Seated: M. Knecht, R. Reisert, A. Steinlage, T. Hunt, J. Kabbes, M. J. Stokman, R. Mansfield,
R. Perez, A. Young.

PATRICIA KERR

LILLIAN KEUPPER

MARIE KLOEPPPEL

MARGARET KNECHT

VIRGINIA KNESE

SYLVIA LAWTON

LOUISE LOVELY

ESTELLE McANDREW

KEVIN McDONALD

DOROTHY McDONNELL

UNA MARIE McGRATH

MERRIE McQUIE

MARTHA ANN McWAY

VIRGINIA LOU MAINS

ROSANNE MANSFIELD

BETTE MAYER

MARY CATHERINE MORGAN

MARY MUDD

CLAIRE O'BRIEN

MARGARET JANE O'DONNELL

RENEE PEREZ

DOLORES QUINLAN

T w e n t y - F i f t h Y e a r



Standing: E. McAndrew, M. Ballman, C. O'Brien, B. Mayer, N. Volm, P. Kerr, D. Cowan.
Seated: M. Robinson, M. McQuie, V. Duerr, A. Illig, V. M. FitzGibbon, B. Bussmann, V. Speh,
M. J. O'Donnell, L. Lovely.

PEARL REGGINI

RUTH REISERT

GERALDINE RELLER

MARIAN RIEHEMANN

JOSEPHINE RIZZI

MARGARET ROBINSON

JANET ROLLISON

DORA ROYBAL

MARLINE RUEMPING

BETTY SCHMUKE

ROSEMARY SCHNEIDERHAHN

RUTH SMUGAI

VIRGINIA SPEH

ANN STEINLAGE

MARY JAYNE STOKMAN

JULIA MARIE SUMNER

MARY BELLE TRACY

ELANORA VALLE

CARINA VETTER

NANCY VOLM

ANN YOUNG

DOROTHY KELLY

Organizations

In order that the process of education may not become merely a process of data accumulation, the student must find some sort of activity which will enable her to test the knowledge she has gained in the classroom. Unless this knowledge is put into practice, the student does not reach her fullest possible development and the educative ideal is thus not realized. Students have long recognized this truth and have organized themselves into groups which can function independently of, but under the unobtruding guidance of academic authorities. Thus a common good is accomplished and the individual talents of the students are developed to the point where they cease to be mere potentialities.





Student Government



Standing: R. Reisert, A. O'Donnell, M. L. FitzGibbon, A. Hof, C. Concannon.
Seated: P. Quick, R. M. Spalding, H. Ritter, V. Riehemann, J. Hyde, C. Carroll, B. Hellinghausen, H. Knapp.



J. Hyde, H. Ritter, V. Riehemann, C. Carroll.

It is only by the cooperation of the entire student body with their elected executive board that Webster College is able to function successfully under student government control. The activities of this organization began when the executive board feted the Freshman in the annual Freshman social week. Then in periodic succession were held the annual Fall Party in October, a Sport Party in November, and the annual Senior Promenade, held in February. The crowning of the May Queen and the Spring Formal brought to a fitting close the social calendar sponsored by the Student Government Board.

It was also the duty of this year's Student Government Board and Student Association to revise and approve a permanent constitution.

OFFICERS

JANE HYDE	President
HELEN RITTER	Vice-President
VIRGINIA RIEHEMANN	Secretary
CATHERINE CARROLL	Treasurer

T w e n t y - F i f t h Y e a r

Sodality



Standing: M. C. Phelan, V. Riehemann, M. Neville, D. Cantalin, H. Thurmond.
Seated: C. Beine, R. Rummelhart, A. Hof, F. McKinlay, C. O'Regan, J. Hyde.

THE Sodality of Our Lady which is a member of the St. Louis Sodality Union and also affiliated with the Prima Primaria in Rome, aims to develop the spiritual side of the students and stresses personal holiness and active Catholicity. This program is carried out by means of the regular Sodality activities and a wide variety of study clubs which are open to all Sodalists.

This year the Sodality with the help of numerous committees sponsored many outstanding events, namely, the crowning of Christ the King of Peace and Mary the Queen of Peace, the Mother's and Daughter's Communion-Breakfast, and the crowning of Our Lady, Queen of the May which was a fitting climax to one of the Sodality's most successful years.

OFFICERS

ANN HOF	Prefect
RUTH RUMMELHART	Vice-Prefect
FLORENCE MCKINLAY	Secretary
CECELIA BEINE	Treasurer



C. Beine, R. Rummelhart, A. Hof, F. McKinlay.

C. S. M. C.



R. Brennan, M. C. Phelan, R. Nestor.

OFFICERS

- | | |
|-----------------------|---------------------|
| MARY CATHERINE PHELAN | President |
| ROSALIE BRENNAN | Vice-President |
| ROSEMARY NESTOR | Secretary-Treasurer |

THE Nancy Havern Unit of the Catholic Students Mission Crusade, under its interested and capable president, has completed another year of service for God and the neighbor. The organization, like the Sodality, fosters personal holiness and active Catholicity in its members and has the further purpose of work for the Home and Foreign Missions.

By collecting food and clothing for local Catholic charities, by filling mite boxes, by entertaining orphans from St. Ann's Orphanage at Christmas time, and by distributing the toys collected at Christmas to the children of St. Elizabeth's parish, the Mission Unit has gone far in accomplishing its three-fold purpose.

During the past year the Unit has donated to the Propagation of the Faith, and to the Home and Foreign Missions, and has cooperated actively with the C. S. M. C. of St. Louis.



Back row: R. Nestor, J. Chapman.
Front row: R. Brennan, A. Hof, M. C. Phelan, C. M. Jacobsmeyer, L. Knese.

T w e n t y - F i f t h Y e a r

Lauretanum

*I*N this volume we, the Lauretanum Staff, have tried to catch the very spirit of Webster that in the years to come you may, by glancing through the pages, relive your college days. Throughout the year, the date of May 19 has been foremost in our minds as the day on which we would present the book to you. Now the endless hunt for ads, and the frenzied copy writing and proof-reading are things of the past, and the Lauretanum has emerged as the culmination of these efforts. Whatever success this '41 Lauretanum may merit is due largely to the help and guidance of the executive faculty, and the cooperation of the entire student body.

LAURETANUM STAFF

LORRAINE MAHER	Editor
MARIE FINKE	Assistant Editor
BARBARA GLEASON	Business Manager
ANN O'DONNELL	Advertising Manager
BETTY BURKE	Sports Editor
RITA GAUVIN	} Circulation Managers
JUNE KAVANAUGH	



Marie Finke, Lorraine Maher.



R. Gauvin, M. Finke, A. O'Donnell, B. Burke, J. Kavanaugh, L. Maher, B. Gleason.

The Loretine



First row: M. J. Schuessler, M. Grant, P. Quick, H. Knapp.
Second row: M. Neville, V. Riehemann, G. Meder, A. Hof.



Peggy Quick, Virginia Riehemann.

THE STAFF

PEGGY QUICK	Editor in Chief
VIRGINIA RIEHEMANN	Assistant Editor
MARIE NEVILLE } MARIAN GRANT }	Associate Editors
HELENE KNAPP	Business Manager
GLORIA MEDER	Advertising Manager
MARIE JO SCHUESSLER	Art Editor
MARIAN GRANT	Just Among Ourselves
RUTH RUMMELHART	Cadences
ANN HOF	Exchanges
DOROTHY OTTENS	Book Notes
ELIZABETH FURI	Near and Far
DOROTHY VAN HOOGSTRATE	Nerinx Hall Notes

THE Loretine, Webster's literary quarterly, has been an outstanding publication since its first appearance in 1916. Its purpose is to give the students an opportunity to further their literary talents and to present for their benefit, guest articles and editorials of cultural value.

The first issue of the Loretine this year was, as usual, an Alumnae edition with Frances Bittner of the class of '34 as editor. Its theme was the Silver Jubilee of Webster College. Because of his intimate association with the College since its foundation and his deep interest in all that concerns Webster, its faculty and students, the Reverend Francis P. Donovan was asked to be guest contributor.

The second edition was devoted to the women writers of the Gallery of Living Catholic Authors; the third was concerned with various phases of culture, and the fourth was dedicated to the Sacred Heart.

T w e n t y - F i f t h Y e a r

The Web



M. J. McAuliffe, D. Ardoyno, C. Concannon, D. Rakers, E. Reid, E. Harter, M. Grant, M. Ward, B. Gleason, J. Hyde, A. O'Donnell, B. Hellinghausen.

WEBSTER is especially proud of its bi-monthly publication, the Web. This journalistic enterprise was begun very humbly in the year 1930 and consisted of one mimeographed sheet called Listen! The Web is the outgrowth of this and has now reached some degree of sartorial splendor, being a five-column, four-page newspaper.

The Web is proud of the fact that it is a member of the Catholic Press Association and for years has received All-Catholic honor awards.

The Web has a twofold purpose: it furnishes experience and serves as a stepping stone for our future newspaper women; it is a source of news and pleasure for the student body, faculty members and close associates of the College.

OFFICERS

EUGENIA HARTER	Editor
DOLORES RAKERS	Assistant Editor
BARBARA GLEASON } MARGARET WARD }	Associate Editors
MARY JANE McAULIFFE	Business Manager
MARIAN GRANT	Circulation Manager
KITTY CONCANNON } BERNICE BUSSMAN }	Assistant Circulation Managers
ANN O'DONNELL	Athletics



Eugenia Harter.

Classical Club



Virginia Riehemann, Eugenia Harter, Mary C. Phelan.

OFFICERS

EUGENIA HARTER

President

VIRGINIA RIEHEMANN

Vice-President

MARY CATHERINE PHELAN

Secretary-Treasurer

SIGMA EPSILON RHO, the Webster College Classical Club, has for its purpose the stimulation of interest in Greek and Latin. Its membership is open to all Latin and Greek majors and minors and all those who have completed one year of college work in the classics.

The program for the year 1940-1941 was the contrast between Greek and Roman life, manners, and customs.

Sigma Epsilon Rho is a unit of the St. Louis University Classical Club which holds monthly meetings either at the University or at one of the Corporate Colleges. Each year there is a Webster representative in the body of officers, for the University Club has a rotating system of election. This year the office of secretary was fulfilled by Eugenia Harter.



J. M. Fahy, U. M. McGrath, H. Ritter, C. Beine, M. Neville, E. Harter, M. C. Phelan, D. Rakers, G. Meder, A. Hof, V. Riehemann.

T w e n t y - F i f t h Y e a r

Le Cercle Francais

LE CERCLE FRANCAIS, the French Club of Webster College, has for its object the stimulation of interest in the life, manners, customs, and literature of French people. It seeks to give French students an opportunity to delve into phases which of necessity cannot be covered in the classroom.

The Club meets bi-monthly under the able direction of its moderator, Monsieur Christian Bonnet. The true French spirit prevails at the meetings. Reports are given on various phases of French and French-Canadian life; French songs are sung; original skits written by French students are enacted; and French plays are presented.

Le Cercle Français concludes its annual activities at a joint meeting with the French Club of Saint Louis University.

OFFICERS

DOLORES RAKERS	President
DOROTHY CANTALIN	Vice-President
SUSAN MONTI	Secretary-Treasurer



Susan Monti, Dorothy Cantalin, Dolores Rakers.



Third row: C. Beine, R. Gauvin, P. Reggini, M. Graf, M. A. Lingner, G. Reisch, D. Cantalin, J. M. Fahy.
Second row: M. Neville, A. Young, M. Knecht, M. Hambrough, T. Hunt, A. O'Donnell.
First row: D. Rakers, V. Riehemann, D. Born, N. Volm, M. P. Rajotte, J. A. Rozier, L. Gallagher, V. Knese, R. Drazen, E. J. Kennedy.

Spanish Club



Standing: E. Figueroa, D. Roybal, B. Mayer, V. Speh, V. M. FitzGibbon, M. Tyrrell, C. Concannon, L. Lovely, D. McDonnell, S. Lawton, R. Smugai, A. G. Gall, U. M. McGrath, A. Illig, S. L. Spalding, M. A. Kilkenny.
Seated: E. Harter, I. Garvey, V. L. Mains, M. P. Rajotte, M. Colburn, E. Davila, M. J. Barnes, D. Buergler, M. A. Barry, G. Meder.



Sarah Louise Spalding, Mary Adeline Kilkenny.

OFFICERS

MARY ADELINE KILKENNY

President

SARAH LOUISE SPALDING

Secretary-Treasurer

THE Spanish Club directed its aim this year toward a better knowledge of the customs and traditions of the Latin-American countries.

The monthly meetings were given over to the discussion of various topics concerning each country, including government, social life, religion, and culture as influenced by Spain.

On January 8, a costume party was held in Social Hall to celebrate Christmas as observed by the Spaniards. Spanish games, dances, and songs furnished the evening's entertainment.

The annual Pan-American Assembly was held April 7. The theme of the program was the "Sword and the Cross," the two weapons by which the Spaniards conquered the new world.

T w e n t y - F i f t h Y e a r

International Relations Club



S. L. Spalding, M. C. Phelan, H. Thurmond, M. P. Rajotte, V. Riehemann, P. Quick, D. Rakers, A. Hof, M. Neville.

THE International Relations Club was organized five years ago at Webster and is under the direction of the College President, Dr. George Francis Donovan. The purpose of the club is to promote a better understanding and knowledge of world affairs. Because of the amount of time required to prepare and discuss the material for its meetings, membership has been limited to twelve students, usually history majors.

This year the discussions have been concerned principally with the European situation. At every meeting, each girl is responsible for a report on the activities of a specific country, while the topics for special discussion have included outstanding men in Europe today. Due consideration has also been given to the Latin-American problem and other international policies.

OFFICERS

PEGGY QUICK	President
MARIE NEVILLE	Vice-President
SARAH LOUISE SPALDING	Secretary-Treasurer



Marie Neville, Peggy Quick, Sarah L. Spalding.

Math-Physics Club



Peggy Quick, Elizabeth Furi, Gerry Reisch.

OFFICERS

ELIZABETH FURI	President
PEGGY QUICK	Vice-President
GERALDINE REISCH	Secretary-Treasurer

THE meetings of the Math-Physics Club are held once a month in the Mathematics room. The club is under the supervision of Sister Mary Borgia and is indebted to her for her splendid assistance and cooperation. Sister Mary Germaine, professor of Physics, lends her interest and enthusiasm to the lively discussion which follow the talks given by a member of the organization.

The activities this year consisted mainly in the study of the part which imagination can and does play in the field of mathematics, with some time devoted to the solution of problems which seem easy at first but later provide plenty of mental exercise. Membership in the club is voluntary and is open to all those who are interested in the advantages to be derived from its meetings.



E. Furi, C. Carroll, F. McKinlay, M. Graf, M. Kennedy, G. Reisch, R. Brennan, P. Quick, M. A. Grennan.

T w e n t y - F i f t h Y e a r

Chemistry-Biology Club

THE Chemistry - Biology Club is one of the most important outgrowths of the science department of Webster College. It is open to all students interested in the subjects; the only provision made for entrance is that a member must have had one year of science. The club gives its members an opportunity to gain information about the progress being made in the industrial and research fields of science.

Interest at the meetings this year was heightened by a scientific fashion show in which the articles shown were of plastic materials. Various field trips were taken by the club for the purpose of studying chemistry as applied to the different industries.

For those who were interested in the biological aspect of science, a field trip was made through the clinic of Desloge Hospital.

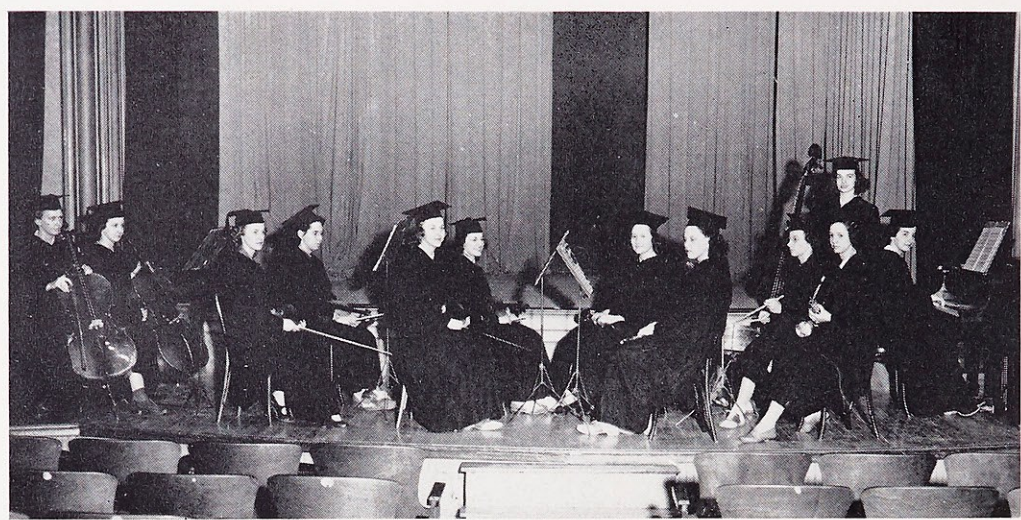
OFFICERS

HELENE KNAPP	President
DOROTHY OTTENS	Vice-President
LORRAINE KNESE	Secretary



Standing: M. Colburn, L. Knese, M. J. Schuessler, H. Knapp, E. Figueroa, M. Knecht, C. M. Jacobsmeyer, R. Brennan, T. Hunt, A. Young.
Seated: R. Schneiderhahn, V. Knese, M. Kloepffel, J. Chapman, J. A. Rozier, R. Perez, A. G. Gall, M. P. Rajotte, M. McQuie, C. Carroll, M. J. Stokman, R. Reisert.

Orchestra



Second Row: F. McKinlay, J. Chapman, H. Nichoff, B. J. Pratte, R. Brennan, P. Hillemeier, R. Rummelhart.
 First Row: S. Shultz, E. C. Ahern, C. Allhoff, E. Jarvis, L. Gallagher.

- | | |
|----------------------|-------------|
| RUTH RUMMELHART | Piano |
| CECILIA ALLHOFF | } Violins |
| EDNA CATHERINE AHERN | |
| VICTORIA TESSMER | |
| JULIA ADEL CHAPMAN | |
| HEDWIG NICHOFF | |
| FLORENCE MCKINLAY | } Cellos |
| SARA SHULTZ | |
| PHYLLIS HILLEMAYER | Bass Fiddle |
| BETTY JEANNE PRATTE | Clarinet |
| ELOISE JARVIS | Flute |
| LILLIAN GALLAGHER | Saxophone |
| ROSALIE BRENNAN | Drums |

THE Webster College Orchestra has functioned for three years under the able direction of Ruth Rummelhart. One of its main accomplishments of this season was the mastering of the Overture to "William Tell." The Orchestra lent a note of formality to the Weekly Assemblies and to the popular Sunday Evening Open Forums. The quartet, organized last year, played a selection at the National Catholic Women's Alumnae Convention held at the Hotel Jefferson in the fall. Part of the entertainment for the Service Clubs of Webster Groves was rendered by this organization.

With the final performance of the Orchestra at the Baccalaureate ceremony this organization completed the first decade of its existence.

T w e n t y - F i f t h Y e a r

The Music Guild



Second row: S. Shultz, E. McAndrew, M. Colburn, M. C. Morgan, M. Grant, B. J. Pratte, M. Robinson.
First row: R. Gullede, C. M. Jacobsmeyer, M. Kloeppel, R. Rummelhart, E. Jarvis.

THE Music Guild is an organization different from any other in the school. Its monthly meetings are devoted to the study of the masters; this year, the members listened to recordings of Beethoven's symphonies.

Its membership includes girls who are majoring in music and also admits any other student who is interested in classical music.

The Guild's annual major activity this year, was a reception and tea given in honor of Dr. Rudolph Ganz on December 3. This famous composer gave an inspiring concert on the evening of December 2, in the auditorium at Webster College. To this concert the students and friends of Webster as well as all music lovers were invited.

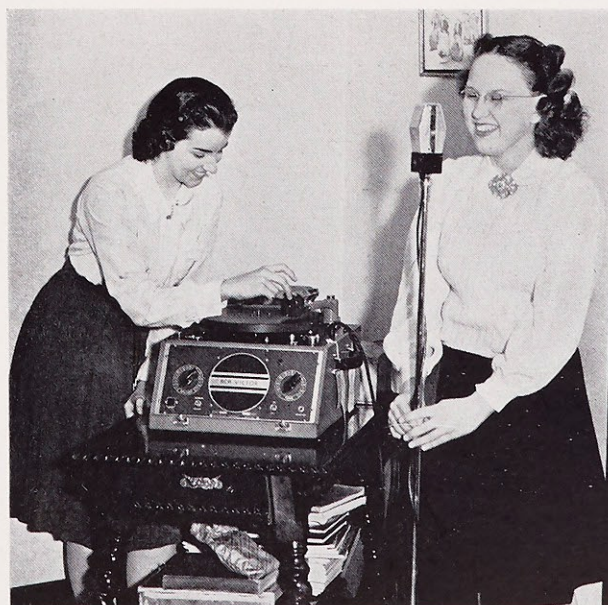
OFFICERS

RUTH RUMMELHART

President

ELOISE JARVIS

Vice-President



Ruth Rummelhart, Eloise Jarvis.

Choral Club



Third row: M. L. Garnier, V. Leicht, M. Fink, R. Gullede, J. Rizzi.
 Second row: R. Rummelhart, R. Brennan, M. L. FitzGibbon, M. J. Stokman, T. Hunt, C. M. Jacobsmeyer,
 E. Reid, V. M. FitzGibbon, R. M. Spalding, J. Hyde, V. Knese, V. L. Mains, P. Quick, V. Speh.
 First row: A. Hof, M. J. McAuliffe, M. Kientzy, D. Kelly, A. Steinlage, M. E. Baker, M. A. Lingner,
 B. Huelsman.

OFFICERS

MARY ELIZABETH BAKER
 President

MARY AGNES LINGNER
 Vice-President

ROSALIE BRENNAN
 Secretary-Treasurer

THE Choral Club of Webster College has successfully completed its sixteenth year. The first public appearance of the Club was in the Vod-Vil, when the members sang "Beloved Mother," written especially for them by Reverend Daniel A. Lord, S. J. Other activities included the singing of Christmas Carols at Hotel Coronado and Hotel Melbourne, and a broadcast over WIL during the holiday season.

The Club was especially honored this year in being allowed to sing the Solemn Mass for the closing of the Forty Hours Devotion and also the Mass for the Baccalaureate ceremony.

The first social affair of the Choral Club was held on December 5th when the girls were hostesses to the Glee Club of St. Louis University. On April 5 a picnic was given to the members by the officers of the Club; and on May 5 the annual Club banquet was held for all the members and for the alumnae of the Club.

At the closing concert given by the Webster College Conservatory, the Choral Club presented a number, accompanied by the St. Louis W. P. A. Orchestra.

T w e n t y - F i f t h Y e a r

The Cooperative Association

THE efforts of Rev. George McDonald, S. J., of the Queen's Work, culminated in the inauguration, in the fall of 1936, of the Cooperative Association of Webster College, which occupied itself with the study of the underlying principles of the Consumer's Cooperative Movement.

In February of 1937, the "Co-op" Store was opened in Loretto Hall and enabled the students of Webster to take advantage of the opportunities which such an enterprise offered.

After a short period of latency, in September of 1940 the store was rejuvenated. Shares were again sold, new stock placed on sale, and the interest of the student-body was awakened once more to the possibilities of fostering a business based upon true Christian principles.

BOARD OF DIRECTORS

MARY CATHERINE PHELAN Manager

CECELIA BEINE HELEN RITTER

MARIE NEVILLE MARY ELIZABETH BAKER

ANN HOF MARIE KIENTZY

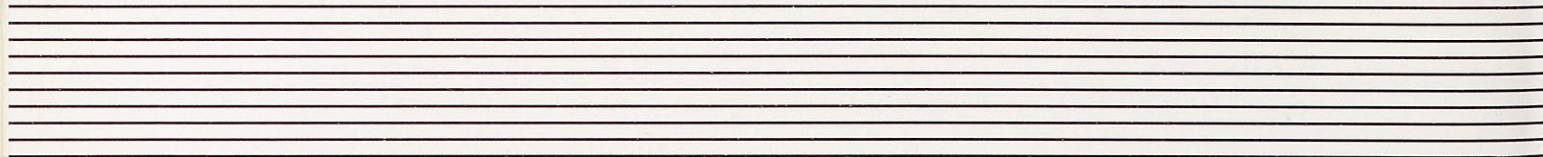


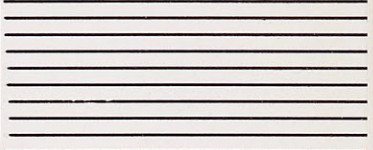
M. C. Phelan, C. Beine, M. Neville, A. Hof, H. Ritter, M. Baker, M. Kientzy.

Activities

It can be said of social activities that their place in the educational scheme is unique, for they give the intellect an entirely new field in which to develop its powers—that of dealing with human beings rather than inanimate objects. The facility thus acquired is less attainable in daily scholastic pursuits as the student is striving to develop herself along more academic lines.

So it is that active participation in all social functions is encouraged in college life. Since the student throughout life will be so intimately connected with other individuals, the importance of social activities, as a means of developing the whole person, can not be overstressed.







May Day

The Crowning of the Queen

Climaxing Webster's social season is the beautiful and long-anticipated May Day. Last year, on the afternoon of May the twenty-sixth, the sound of the herald's trumpet silenced the eager spectators and announced the arrival of the Retiring Queen, Miss Marjorie Belt. When she had reached the throne, the procession of the maids followed immediately: Florence Baxter, Roberta Irwin, and Amelia O'Neil, representing the Senior Class; Betty Hellinghausen and Thelma Dudenhoeffer, the Junior Class; Barbara Gleason and Jane Morris, the Sophomore Class; and Eileen Hanlon, the Freshmen Class.

The trumpet sounded again and this time the herald proclaimed the Queen of Love and Beauty, Miss Ruth Rummelhart, a member of the Junior Class. A picture of loveliness, the new Queen gracefully approached the throne where she was crowned with a garland of flowers. The Senior Class, carrying the traditional Daisy Chain, formed the guard of honor along the pathway to the throne.

Entertainment for Her Majesty included the May Pole Dance by members of the Freshmen Class, a solo by Eileen Reid, and a duet by Betty Burke and Pat Costello. After the ceremony a reception and tea were held in Social Hall.

T w e n t y - F i f t h Y e a r

May Day

Waiting for the herald's call.

Senior maids.

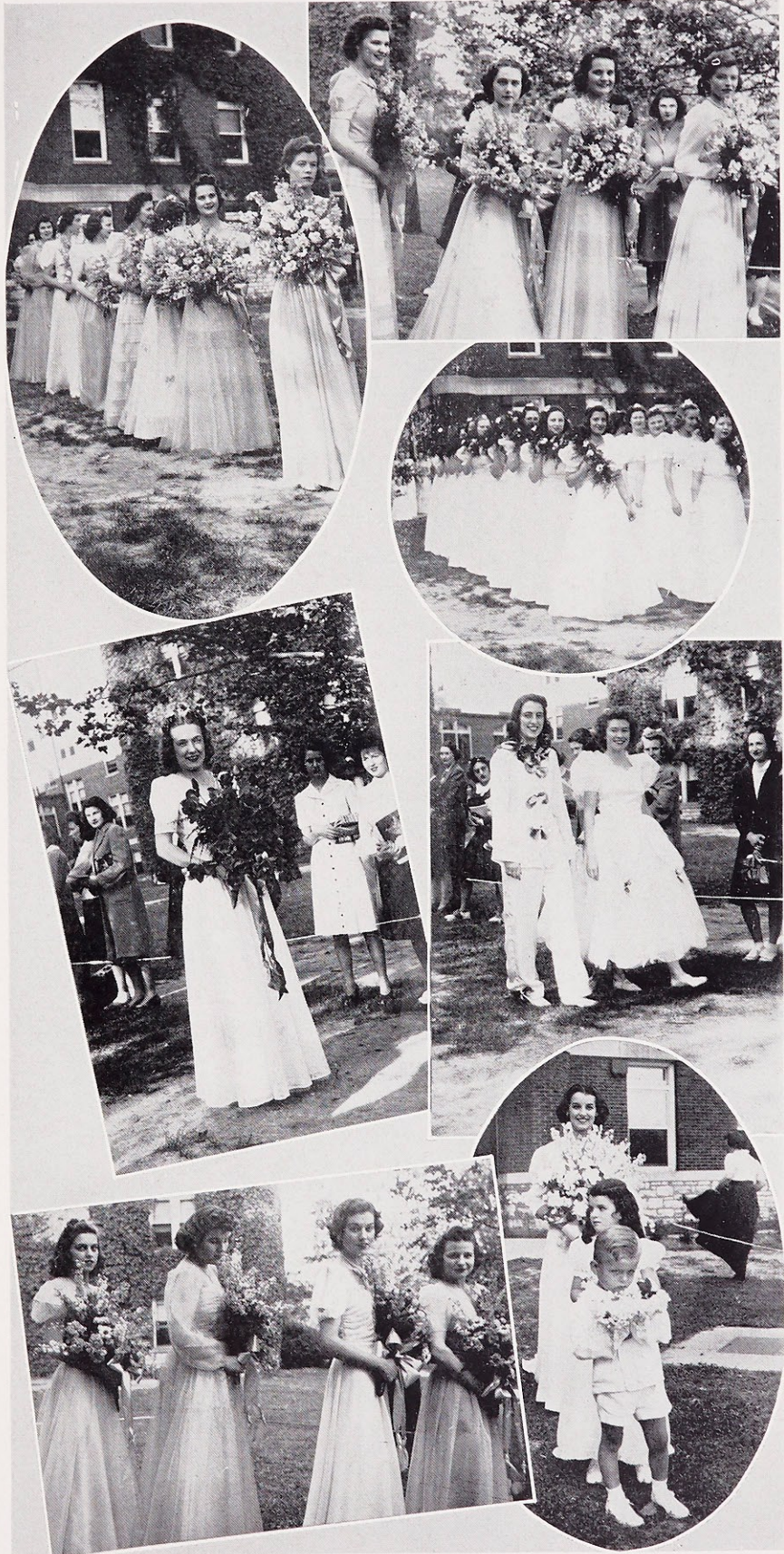
Seniors with their traditional daisy chain.

Marjorie Belt, our retiring Queen.

Pierrot and Pierrette?

About to be presented to court.

A Queen and her retinue.





Educational Tour

The third annual educational tour entrained for Washington, Williamsburg, Annapolis, New York and West Point on Monday, April 14, at Union Station. In the group chaperoned by Miss Killian were: J. Hyde, B. Hellinghausen, A. Hof, H. Knapp, E. Furi, C. M. Jacobsmeyer, E. Harter, M. J. Schuessler, D. Ottens, M. Ward, R. J. Gauvin, M. Kientzy, M. E. Baker, V. Daly, A. Drake, R. Feigenbaum, M. Knecht, T. Hunt, C. O'Brien, A. Young, M. Helfer, M. Ruemping, U. M. McGrath, G. Reller, L. Keupper, R. Schneiderhahn, E. J. Kennedy, R. Smugai, D. Roybal, A. Steinlage.

The itinerary included a sightseeing tour of our historic national capitol, a visit to colonial Williamsburg, attendance at Fred Waring's broadcast from Radio City Music Hall, and dinner at the famous Astor Hotel in New York. The two national academies, West Point and Annapolis, were also stopping places for the Webster tourists—the Saturday night hop at West Point holding the undisputed place as the climatic event of the tour.

T w e n t y - F i f t h Y e a r

Ever Ready.

Breezy, eh?

That's one way to keep
her quiet!

"The pause that refreshes."

A well-earned rest.

On Mount Vernon

Us on a bus.

Pan Americanizing?

Their feet too big!

Sightseeing!





Formal Dinner

Guests at Dinner at the Mid-Winter Formal Party.

February sixth marked the highlight of Webster's social season, for on that night the annual Formal Dinner, sponsored by the Woman's Club, was held at the Missouri Athletic Association.

Out of mid-year hibernation, the exams having been weathered more or less successfully, the Websterites were again their gay, sparkling selves, and judging from the tone of their reminiscences, they heartily vote for more formal dinners and fewer exams.

Another outstanding event of the social season was the Christmas Banquet at which the lay faculty and students were the guests of the Junior Class. Traditional at this banquet is the presentation to the Seniors of their class pins by Dr. Donovan, President of the College.

T w e n t y - F i f t h Y e a r

Formal Dinner

Gracious chaperones for a great occasion.



"Well, here we are!"



"Park the car, James!"



"Shall we go up to dinner?"



"Good evening, Dr. Donovan,"
and "May I present—"





J. Hyde, M. Finke, C. Carroll, M. J. McAuliffe, E. Reid, M. Kientzy, M. E. Baker.

The Loretto Players



E. Reid, M. J. McAuliffe, M. Kientzy, M. Finke.

THE dramatic society of Webster, the Loretto Players, is composed not only of speech majors and minors, but also of anyone interested in theatrical work.

This year the first production to be given was the cavalcade of drama, "From War to War." In the cavalcade scenes from plays that have found favor with Webster audiences for the past twenty-five years were presented.

Interspersed among the more elaborate productions were several one-act plays, presented by the senior dramatic group. These plays, not open to the public, were given as a laboratory experiment to enable the participants to study more deeply the art of characterization and personal interpretation.

OFFICERS

EILEEN REID	President
MARIE KIENTZY	Vice-President
MARY JANE McAULIFFE	Secretary
MARIE FINKE	Treasurer

T w e n t y - F i f t h Y e a r

Loretto Players

The highlight of the Webster theatrical season is the annual Shakespearean play. This year the players chose as the field of their endeavor one of Shakespeare's best known comedies, "Twelfth Night." In connection with this, Mr. Sam Pearce, distinguished actor and lecturer, spoke at Webster, showing slides of "Twelfth Night" as it is being produced on Broadway.

As their contribution to the Drama Festival held annually at Missouri University, the Loretto Players presented an abridged version of "Twelfth Night." This version was also presented at many of the public and private schools of the city.



Back Row: A. Drake, R. Perez, M. Hambrough, N. Burnworth, A. Steinlage, L. Gallagher.
First Row: M. Grant, Mrs. Sankey, B. Huelsman, M. Ruemping, G. Reller, T. Hunt, K. McDonald, A. Young.

Vod-Vil, Revue in Silver

Some concentration!

"Ladies and Gentlemen."



Anyone here yet?

Still at bridge.



Looking for something, you two?



It's easy, just do as I do.

Eileen, in a serious moment?

T w e n t y - F i f t h Y e a r

The Riding Club



N. Volm, M. Kientzy, E. Carter, M. J. Stokman, T. Hunt, M. Born.

*T*HE Riding Club was successfully organized this year at Webster College under the able direction of Marie Kientzy, president of the organization. Membership in the club is not limited to advanced riders, but is open to anyone interested in the sport. The following girls are members of the Club: Nancy Volm, Marie Kientzy, Evelyn Carter, Mary Jayne Stokman, Thomasine Hunt, Marie Finke and Lorraine Maher. The organization meets weekly at Westwood Stables where the members learn the finer points of horsemanship. Four members of the club, Marie Kientzy, Evelyn Carter, Thomasine Hunt and Mary Jayne Stokman were participants in the annual Maryville Horse Show.

MARIE KIENTZY

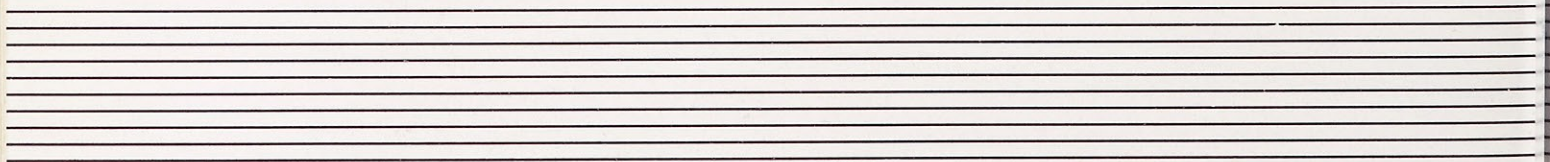
President



Sports

In order that the development of the student may not be a purely intellectual one, the Catholic college must also encourage the physical development of its students. With this in mind athletics have been incorporated into the curriculum, for not only do they serve as an effective supplement to the training of the mind, but they also provide a healthy outlet for the spirit of competition.

As a Catholic college, Webster has realized these advantages and may thus point to another classical tradition in which she has steeped herself—one which has sprung from Juvenal's ancient dictum, "Mens sana in corpore sano."





1 9 4 1 — W e b s t e r ' s
Athletic Association



G. Meder, M. Stuppy, B. Burke, R. Nestor, M. Klees.



Gloria Meder, Miss Pancerz.

OFFICERS

GLORIA MEDER	President
BETTY BURKE	Vice-President
MARION KLEES	Secretary
MARIE KIENTZY	Treasurer

THE Athletic Association, under the leadership of its president, Gloria Meder, and its moderator, Miss Pancerz, has undertaken several new activities this year. In addition to arranging the varsity schedule, the tennis tournament, the interclass volley ball and basketball games, and field day, the Association promoted something new and different in the form of a Posture Contest. To select the most poised girl a fashion show was held in which the twenty finalists modeled.

As the Webster College Athletic Association rounds out its twenty-first year of existence, it feels that it has more than fulfilled its purpose of promoting loyalty and sportsmanship. To aid in the attainment of this goal, the executive board of the association planned that the annual field day should consist of a series of events involving class competition rather than individual abilities. The presentation of awards for this and all other sporting events was made at the Athletic Banquet.

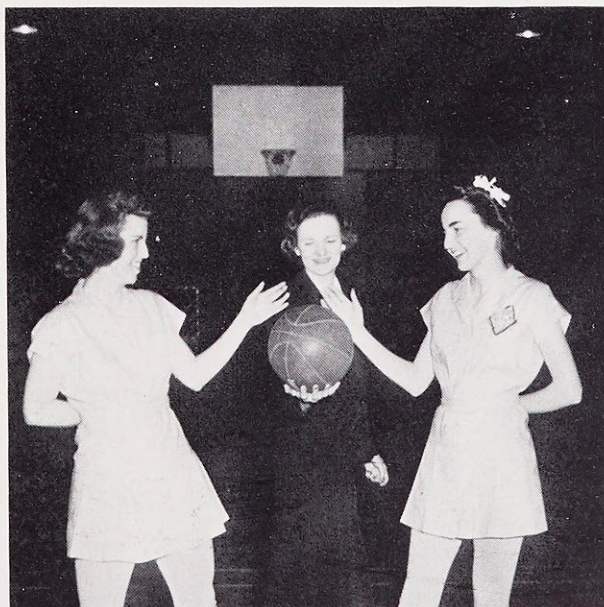
T w e n t y - F i f t h Y e a r

Varsity Basketball Team

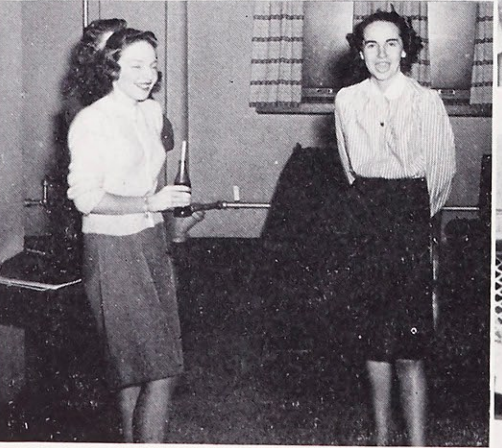


Standing: G. Meder.
Kneeling: M. Ward, B. Burke, V. M. FitzGibbon.
Sitting: J. Hyde, E. Reid, C. Casey, R. Perez, M. Klees, A. O'Donnell, Miss Pancerz.

*F*OR the 1941 Basketball season, Jane Hyde and Eileen Reid were elected co-captains by their teammates, Gloria Meder, Catherine Carroll, Marion Klees, Margaret Ward, Ann O'Donnell, Betty Burke, Iris Garvey, Cecilia Casey, Renee Perez, Bernice Bussmann, and Viola Mae FitzGibbon. The first two games gave a rather inauspicious beginning to the six-game schedule, since both resulted in Webster defeats: Fontbonne winning the game on Feb. 21, 19-17, and the St. Louis Hockey Club turning back the Websterites 30-18 on Feb. 23. Webster rallied quickly, however, by defeating Harris 19-16 and 27-17 on Mar. 7 and 21, respectively, and by winning the return game with Fontbonne by the very close score of 12-11. In the final game of the season the Varsity bowed to their challengers, the Alumnae, 12-10.



Eileen Reid, Miss Pancerz, Jane Hyde.



Where's the Horse?
Her brother's coat.
A day in May.
Candidly Speaking.

Out on a Limb.
Nice Horsey.
Bundles for Britain.

Williamsburg.
Camera Shy?
Lying Low.
Enjoying the Tour?
We Three.

Photogenic.
Yum—Yum!!
Between Classes.
President Donovan.
Our Loyal Friend.

Just Waiting.
Food for Thought.
Christmas Banquet.
I Can Dream, Can't I?

Where's Annette?

Up a Tree?
Who's the Gang?
That's Mae!



Sponsors

Mrs. Mary E. Allhoff

Mr. and Mrs. N. A. Burnworth

Mr. and Mrs. J. E. Carroll

Mr. and Mrs. J. M. Feigenbaum

Mr. and Mrs. A. W. Finke

Mr. L. J. Gleason

Mr. and Mrs. J. F. Hanlon

Mr. and Mrs. C. F. Kelly

Mr. and Mrs. Chas. Knoedelseder

Dr. and Mrs. Thos. F. Maher

Major and Mrs. Robert Rollison

Mr. and Mrs. H. M. Young

T w e n t y - F i f t h Y e a r

Patrons

Mr. and Mrs. Charles J. Baker
Miss Mary E. Baker
Mr. and Mrs. John P. Ballman
Mr. and Mrs. W. E. Braeckel
Mrs. Rosalie Brennan
Mr. and Mrs. J. C. Buergler
Miss Mary A. Burke
Mr. and Mrs. J. J. Burke
Mr. and Mrs. J. A. Bussman
Mrs. Lee Carter
Mr. and Mrs. Thomas M. Chapman
Mrs. Cora Cowan
Mr. and Mrs. A. P. Daly
Mr. and Mrs. A. T. Daly
Mr. and Mrs. Ben Dobyns
Mr. and Mrs. C. E. Drake
Mr. and Mrs. S. E. Duerr
Mr. and Mrs. R. J. FitzGibbons
Miss Mary A. Fregeau
Mr. and Mrs. Ira J. Garnier
Mr. and Mrs. J. L. Garvey
Mr. and Mrs. W. E. Gauvin
Mrs. Lee R. Grant
Mr. and Mrs. Matt. Grenann, Sr.
Mr. F. Griffin
Mr. and Mrs. W. G. Hellinghausen
Mr. and Mrs. Fred Hof
Mr. and Mrs. David J. Hyde
Mrs. Wm. F. Illig
Mr. and Mrs. B. J. Jacobsmeyer
Mr. and Mrs. F. W. Kabbes
Mr. and Mrs. J. L. Kennedy
Mrs. V. H. Kennedy
Mr. and Mrs. Terence Kerr
Mr. and Mrs. Martin Kientzy
Mr. and Mrs. J. D. Kilkenny
Miss Mary Killian
Mr. and Mrs. H. A. Klees
Mr. and Mrs. A. J. Kloeppe
Mr. and Mrs. J. R. Knapp
Mr. and Mrs. A. Knecht
Mr. and Mrs. L. H. Knese
Mrs. M. A. Leicht
Mrs. George Mains
Mr. and Mrs. C. S. Mansfield
Mr. and Mrs. G. P. McAndrew
Mr. and Mrs. Anthony McMahon
Mr. and Mrs. J. P. Morgan
Mr. and Mrs. John B. Mudd
Mr. and Mrs. J. S. Neville
Mrs. M. J. O'Brien
Mr. and Mrs. Thomas P. A. O'Donnell
Mr. and Mrs. Wm. V. O'Donnell
Mr. and Mrs. H. H. Ottens
Miss Helen K. Pancerz
Mr. and Mrs. Leonard Perez
Mrs. David S. Phelan
Mr. Frank Podolski
Dr. and Mrs. B. C. Portuondo
Mr. and Mrs. G. E. Quick
Mr. and Mrs. A. J. Rakers
Mr. and Mrs. James A. Reid
Mr. and Mrs. A. J. Reisch
Mrs. Mary Reller
Mr. and Mrs. F. E. Riehemann
Dr. and Mrs. Frank Ritter
Mrs. K. A. Robinson
Mr. and Mrs. R. Rosenthal
Mr. and Mrs. C. J. Rozier
Mrs. Anna McClain Sankey
Miss Ruth Savage
Mr. and Mrs. J. E. Schmuke
Mr. and Mrs. W. W. Schuessler
Miss Marie Jo. Schuessler
Mr. and Mrs. Paul Sheridan
Mr. and Mrs. Earl G. Smith
Mr. and Mrs. L. A. Smugai
Mrs. Robert E. Sontag
Mayor and Mrs. Robert Spalding
Mr. and Mrs. Wm. M. Spalding, Jr.
Mr. and Mrs. A. F. Steinlage
Mr. and Mrs. Alphonse Stokman
Mrs. J. T. Thurmond
Mr. and Mrs. Thomas T. Tracy
Mr. and Mrs. J. F. Tyrrell
Mrs. N. M. Ward
Webster College Book Store
Mr. and Mrs. J. E. Whelan
Mr. and Mrs. M. Yowitz

LA PROVINCE DE QUEBEC BIDS YOU FRIENDLY WELCOME

Come to the romantic land of Québec, French Canada, in its most attractive form. Visit the land where history was made, and where the past rubs shoulders with modernism at practically every step.

No passports are required to visit *La Province de Québec*. There are no blackouts here. You make 10 per cent on your money the moment you step across the border into Québec.

Attractive scenery, magnificent waterfalls, venerable churches, houses and mansions. Wayside shrines and Calvaries. Mammoth hydroelectric plants. Ox-carts plodding along the highways. Giant newsprint establishments. Oxen and horses yoked together on the farms. Old world charm in a twentieth century setting. There is much to see, and admire, in old Québec. Write us for full details (either at our New York office, 48 Rockefeller Plaza, or in Québec), and then come and visit us. You will be "*bienvenus*".

PROVINCE OF QUEBEC TOURIST BUREAU
Parliament Buildings ♦ Quebec, Canada

OLD VIENNA PRODUCTS

Distributors of

Oke Doke Popcorn
and **POTATO CHIPS**

4339 DUNCAN — FRanklin 1700

NUT MEATS

POPCORN

Compliments of

•
JOE GARAVELLI

•
5701 DeGiverville

RUBICAM SCHOOL

offers

Thorough preparation for
Secretarial, Stenographic
and Accounting Positions

PLACEMENT SERVICE
WITHOUT CHARGE TO
RUBICAM GRADUATES

SUMMER CLASSES IN SHORT- HAND AND TYPEWRITING

Day and Evening Classes
Individual and Group Instruction

•
Three Conveniently Located Schools

4933 DELMAR BLVD. FOrrest 3900
3469 S. GRAND BLVD. LAclede 0440
7701 FORSYTHE BLVD. CABany 4102

Compliments of
**KONCEN
MEAT COMPANY**

6210 Easton Avenue

DAD KNOWS BEST . . .

Van Horn's fried chicken is different.
So are his hot biscuits and strawberry
preserves. Come out and enjoy yourself on
Saturday night.

Van Horn's Farm

9401 LITZINGER ROAD
BRENTWOOD

(Scene of the Annual Fathers-Daughters Banquet)

WEBSTER GROVES TRUST COMPANY

Compliments
of the
JUNIOR CLASS

FOR FINEST WORK CALL AT . . .

ARCADE SHOE REPAIR SHOP

Shoes Rebuilt, Not Cobbled

126 W. LOCKWOOD

Phone EVergreen 9400

MEYER SERVICE STATION

SINCLAIR GAS AND OILS
Tires and Tubes — Tire Service
Cars Washed and Greased

7300 NATURAL BRIDGE ROAD

KROENLEIN'S MARKET

GROCERIES,
MEATS, VEGETABLES

A-G Store

3835 St. Ann's Lane

Normandy, Mo.

Monti Jewelry Company

"School Rings - Pins - Medals"

SPECIAL ORDER WORK

CHestnut 0090

531 Arcade Bldg.

BRADLEY SERVICE STATION

◆ We Call For and Deliver ◆

KIRKWOOD AND BIG BEND RDS.

Kirkwood 2493

KIRKWOOD, MO.

*For Breakfast — Lunch — Dinner
... or a Midnight Snack*

IT'S TOWN HALL TONIGHT
Clayton at Big Bend Hilland 3555

Bus. Phone
CHestnut 0840

Res. Phone
MULberry 6859

Chicago Theatrical Shoe Co.
533 ARCADE BLDG.
ROY C. LEWIS ST. LOUIS, MO.

Phone, GARfield 6297
Expert Optometrists and Opticians

**DR. ALOIS A. WINTERER
DR. GEORGE A. WINTERER**

Eyes Scientifically Examined and Glasses
Made to Correct All Defects of the Eye

202 North Seventh (Near Pine) St. Louis

**H. B. SURKAMP
REALTY CO.**

6331 EASTON

•
GOodfellow 3355

★

*Compliments
of a*
FRIEND

★

Compliments of
**Miss Hickey's
Training School
for Secretaries**

• *Compliments of the*

**JAS. J. O'CONNOR
COFFEE CO.**

609 Del Monte Way

ROsedale 1100

Wiles-Chipman Lumber Company

"Stayput" LUMBER

A newly developed method of piling insures these qualities

DRYNESS—Must be dried so as not to
exceed 19% moisture before piling.

STRAIGHTNESS—Pressure of its own
weight makes and keeps it straight.

CLEANNESS—Offset in piling stock keeps
it bright and clean.

1234 S. Kingshighway

FRanklin 6500

Faithful Service to
SCHOOLS — HOTELS — HOSPITALS

Since 1874

J. F. CONRAD GROCER CO.

Compliments of

DALE PRINTING CO.

714 E. Big Bend Rd.

WEbster 2628



Compliments of

S. W. STEIN MEAT CO.

314 S. Twenty-first St.

Garfield 4155

For

**ICE
COAL
FUEL OIL**

Call Jefferson 1000

THE CITY ICE & FUEL CO.

3638 OLIVE

**The
PARKMOOR**

ALL CREAM
ICE CREAM



DELICIOUS
SANDWICHES

JOS. WARD PAINTING CO.



PAINTING CONTRACTORS



3110 EASTON AVENUE



HARDWARE and "HOWE"

P. O. HOWE HARDWARE CO.

646 E. Big Bend Road

Delivery Service Phone Web. 652

Jefferson 0633

Compliments of the
JOS. LIPIC PEN CO.

811 LOCUST • CEntral 2774

DE PAREE BEAUTY SALON

*Mr. Weber and His Staff of
Hair Stylists*

7322 FLORISSANT RD. EV. 8822

**Wear Optically Correct
Sunglasses**

Scientific Glare Protection Is
Assured When You Wear

ERKER'S RAY-BAN SUNGLASSES

May Be Ground to Your Prescription
As Personal Sunglasses

Erker's

Guild Opticians

610 OLIVE

518 N. GRAND

Compliments

of the

SOPHOMORE CLASS

Compliments

of

**LORETTO ACADEMY
MOTHERS' CLUB**



Compliments

of the

FRESHMEN CLASS

Best Wishes

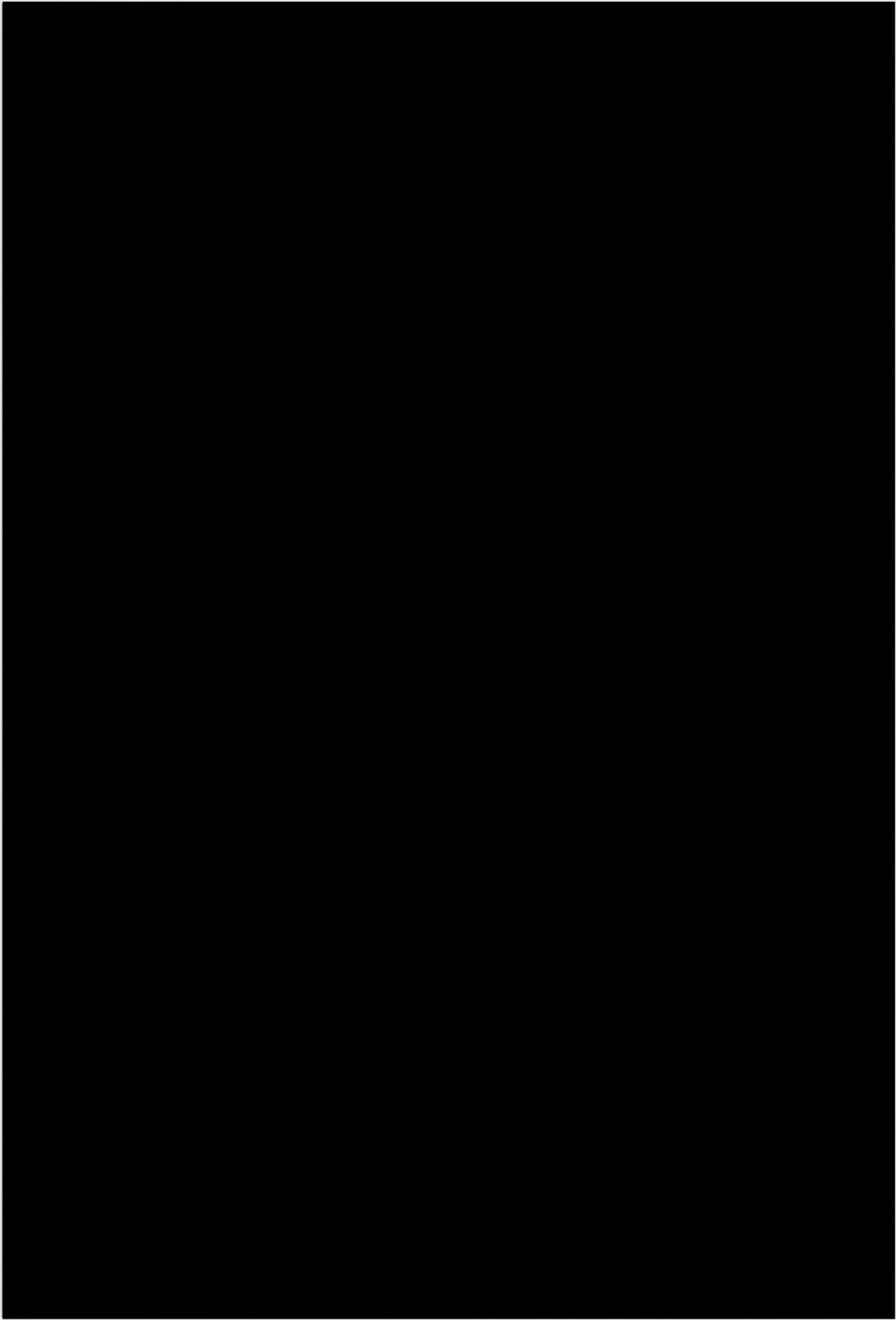
of

FERGUSON CLEANERS

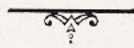
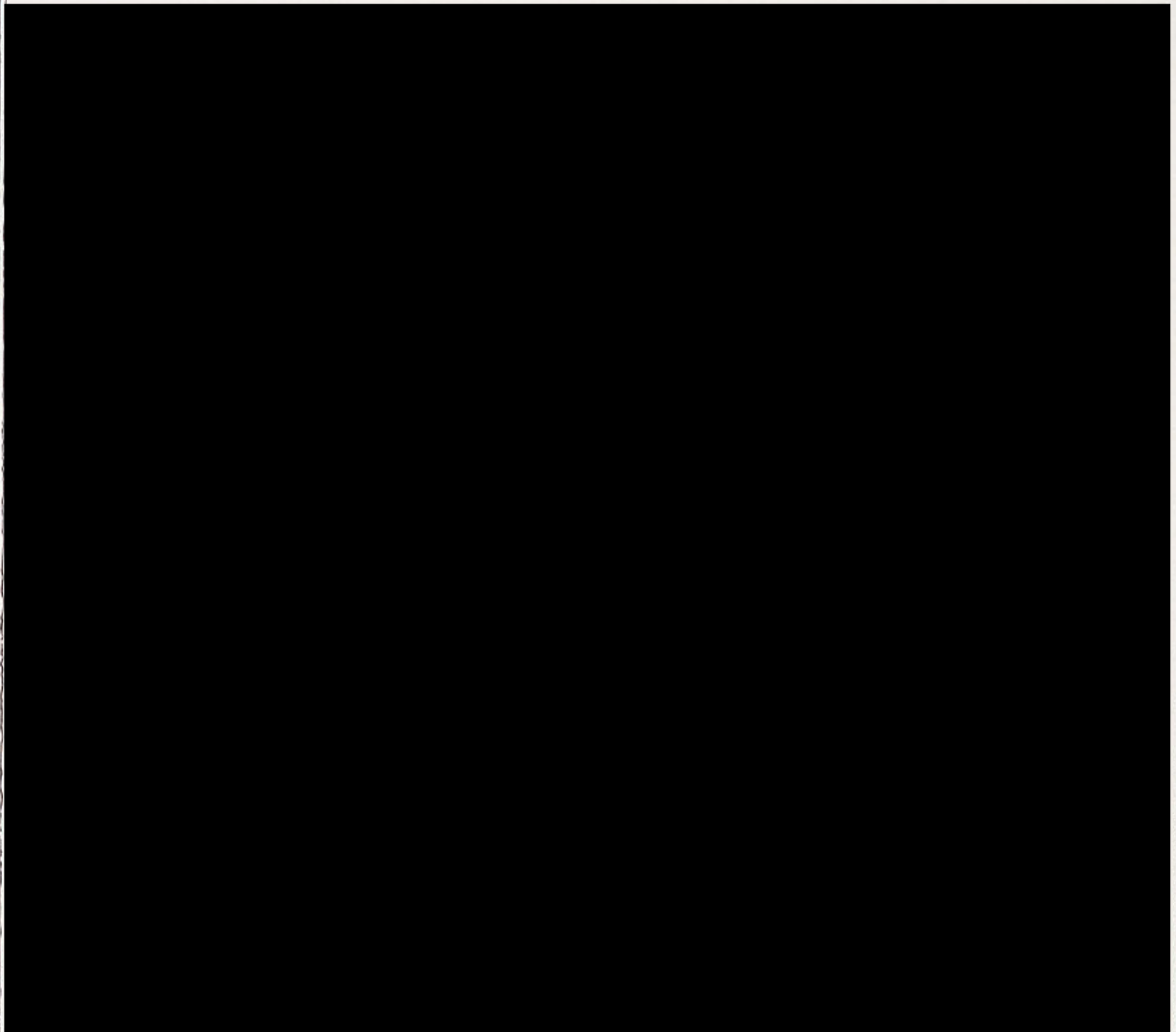
725 S. Florissant Rd.

Yo. 0594

Patronize Our Advertisers



Student Directory (Continued)



COVERS and BINDING
for the
1941 LAURETANUM

by

BECKTOLD COMPANY
SAINT LOUIS, MISSOURI