



*The Lauretanum of  
nineteen forty-four*

WEBSTER COLLEGE LIBRARY

470 EAST LOCKWOOD

ST. LOUIS, MISSOURI 63119

WEBSTER UNIVERSITY ARCHIVES



*The Lauretanum of  
nineteen forty-four*

# Dedication

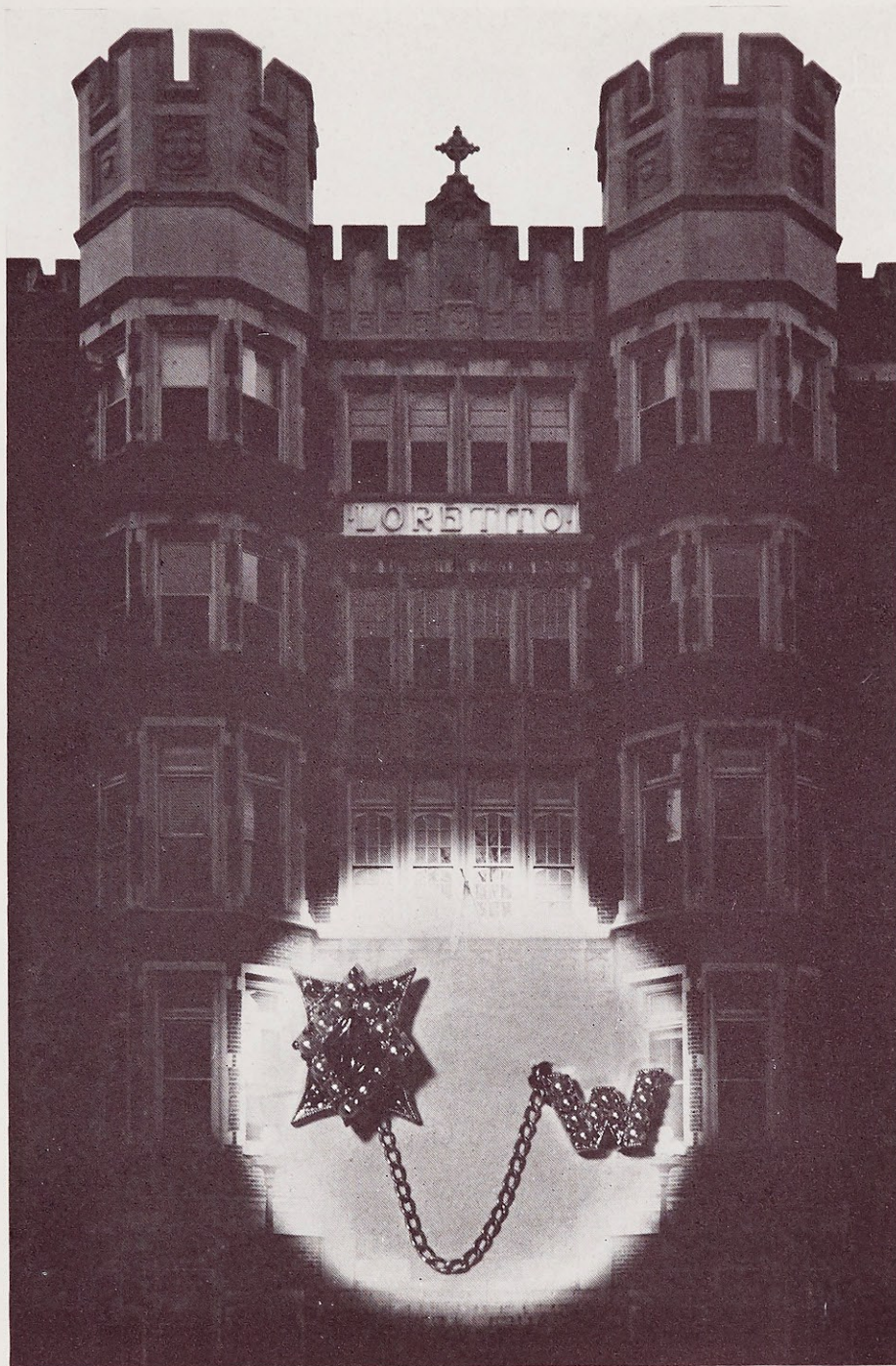
Our Lady is our model. Throughout the ages her self-sacrificing, all-loving spirit has been the pattern par excellence. Mary, the handmaid of God, the essence of all virtue, is the ideal of the Webster girl; Mary, Virgin and Mother, will be her choice for the future, too.

*So to Mary, our Model, we dedicate this Lauretanum of 1944, and to her we dedicate ourselves — Today, Tomorrow, and Always.*

PHOTO  
Edwy  
Jack  
Studi

ENGRA  
Cent  
Comp

PRINTIN  
Ven 1



PHOTOGRAPHY—

Edwyn, James Cutter,  
Jack Zehrt, Lange  
Studio, Piaget Studio

ENGRAVING—

Central Engraving  
Company

PRINTING—

Von Hoffmann Press

## Contents

*Seniors...*

*Classes...*

*Activities...*

# Today ~

Facing a chaotic world of conflicting ideals, our Seniors stand secure. For Webster has instilled in their hearts immutable standards of natural and supernatural truths. . . . Today they, like Mary, go forth finding strength in Christ.



# Senior Class

## Viola Mae FitzGibbon

University City, Missouri  
Ph.B. IN ENGLISH

Viola's our Varsity veteran. Thinks she deserves another degree—B. S., Bachelor of Switchboard. Mission-minded, cooperative, calm and congenial—our Fritz.

## Etervina Figueroa

Cayey, Puerto Rico  
B.S. IN BIOLOGY

Cosmopolitan, philosophical. Puerto Rico's contribution to science. Her smile fits her personality: warmth-giving. Graduation from Webster is Cuca's ambition realized.

## Enid Guillermina Dávila

Lajas, Puerto Rico  
A.B. IN HISTORY

Her beauty is as Latin and as feminine as a gardenia. Intellectual, serene. Her interest in international affairs is as modern as today's map.

## Margaret Ballman

Normandy, Missouri  
Ph.B. IN FRENCH

Quiet, has a friendly air about her. "Charity begins at her home"—vacation time is visiting time at the Ballman's. A true Pan-American spirit.



### VIOLA MAE FITZGIBBON

Sodality Board Member '41, '42, '44, Secretary '42; Web Co-Business Manager '44; Spanish Club '41, '42, '43; English Club '43, Secretary '43; C. S. M. C. Vice-President '43, President '44; Choral Club '41, '42; Varsity Basketball '41, '42, '43, '44.

### ENID GUILLERMINA DÁVILA

University of Puerto Rico '40; Spanish Club '41, '42, '43, '44, President '42; Biology Club '41; International Relations Club '42, '43, '44, Vice-President '43, President '44; St. Louis University Classical Club Member '41, '42, '43; Co-Op Officer '44; President of Foreign Section Club '43, '44; Vodvil '41; Drum and Bugle Corps '41.

### ETERVINA FIGUEROA

Chemistry-Biology Club '41, '42, '43, '44, Secretary-Treasurer '43; International Relations Club '43, '44; Spanish Club '41, '42, '43, '44, President '43, Treasurer '44; Vodvil '41.

### MARGARET BALLMAN

French Club '41, '42, '43, '44; Riding Club '41.



VIOLA MAE FITZGIBBON

ETERVINA FIGUEROA



ENID GUILLERMINA DÁVILA

MARGARET BALLMAN



# Senior Class

## Helen A. Hagen

St. Louis, Missouri  
Ph.B. IN ENGLISH

Typically artist, eccentric, indifferent to food. Dramatic as Hepburn. Handles the basketball and the metaphor with equal skill. Generosity—characteristic of Helen.

## Kiyoko Hosoura

Los Angeles, California  
A.B. IN FRENCH

Pianist, linguist, soft-spoken, quick-witted. Koko's first St. Louis thrill—snow! Petite and meticulous. Her laughter is like the tinkling of fine crystal.

## Mary Thomasine Hunt

St. Louis, Missouri  
Ph.B. IN SPEECH

Impetuous, collegiate, smooth. Enthusiastic about anything Webster. A game of bridge, a bottle of coke, a juke-box tune—that's Tommye.

## Audrey Rita Illig

St. Louis, Missouri  
Ph.B. IN ENGLISH

Thoroughly enjoys a joke. Lends a willing hand. Circulation manager of the Web—'nuff said. Pleasant, active, always on the go.



### HELEN A. HAGEN

Le Clerc College, Belleville, Illinois, '41, '42, Web Staff '43, '44; Loretine Associate Editor '43, Assistant Editor '44; Athletic Association Treasurer '44; Archery Award '43; Varsity Basketball '44; Who's Who '44; Illinois Section Club, Secretary, '43, President, '44; English Club Vice-President '43, '44; Poetry Club President '44; Loretto Players '43, '44, President '44.

### KIYOKO HOSOURA

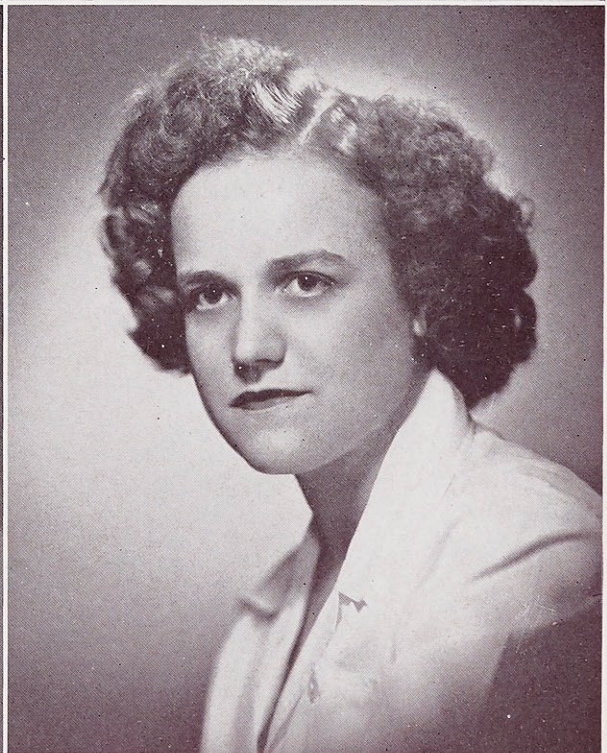
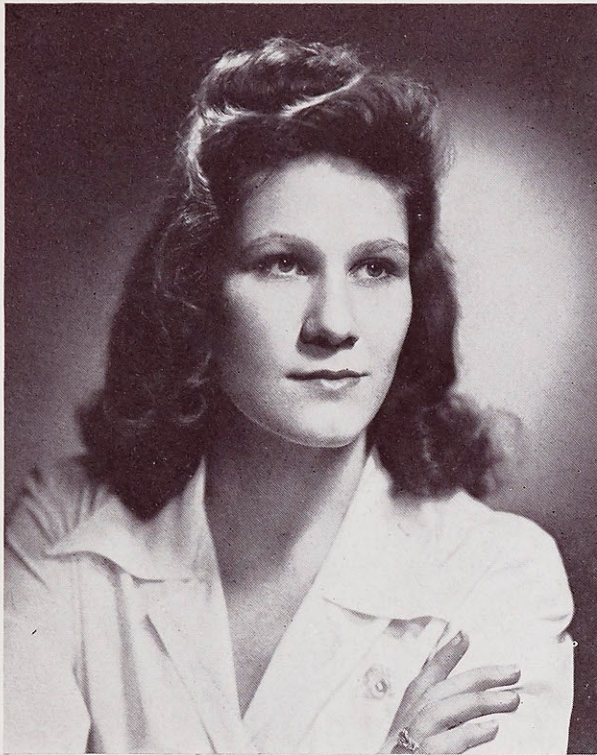
University of California, Los Angeles, California, '40, '41, '42, '43; French Club '43, '44; International Relations Club '43, '44.

### MARY THOMASINE HUNT

Student Government Representative '44, Secretary '44; LAURETANUM Editor '43; French Club '41, '42; Riding Club '41, '42; Chemistry-Biology Club '41; Loretto Players '41-'44, Secretary '43; Music Guild '44; C.M.S.C. Vice-President '42; Choral Club '41, '42; May Maid '43; Who's Who '43, '44; Vodvil '41.

### AUDREY RITA ILLIG

Web Circulation Manager '44; Loretine Business Manager '44; English Club '43, '44; Spanish Club '41, '42, '43, '44; Poetry Club Secretary-Treasurer '44; Dietetics Club '42, '43; C.S.M.C. Representative '44; Co-Chairman of Big Sister-Little Sister Party '44.



HELEN A. HAGEN

KIYOKO HOSOURA

MARY THOMASINE HUNT

AUDREY RITA ILLIG

# Senior Class

## Marie Catherine Kloeppe

St. Louis, Missouri  
A.B. IN ENGLISH

Inimitable wit, thought-provoking poetry, unassuming manner—all characteristic of ReRe. Active sodalist. Completely sincere. Sun-dust in her hair.

## Josephine Kabbes

Jackson, Mississippi  
B.S. IN DIETETICS

She's a riot. Her accent is as soft as southern cotton. Molasses in January action. Prefers the arms of Morpheus to a leg of chicken. Our '43 Santa—Jojo.

## Margaret Knecht

St. Louis, Missouri  
B.S. IN DIETETICS

Brown-eyed blonde. Versatile, invigorating, a natural leader. Always keeps the sunny side up. A smile for every member of the Association. She cooks, too.

## Dorothy McDonnell

Kansas City, Missouri  
B.S. IN DIETETICS

Fun to be with. Service with a smile at the Co-Op or Caf. Room a veritable grocery store. Likes Colorado and horses. Majors in living.



### MARIE CATHERINE KLOEPPEL

Kappa Gamma Pi; Class Secretary '44; Sodality Board '43, '44; Web Staff '41, '42, Assistant Editor '43, Co-Editor '44; Loretine Co-Editor '44; LAURETANUM Art Editor '43; Biology Club '41; Music Guild '41; French Club '41-'44, Award '43; Poetry Club '43, '44; English Club '43, '44; International Relations Club '43, '44, Vice-President '44; Nominating Committee '43, '44; Varsity Basketball '43; May Maid '43; Who's Who '44; Vodvil '41.

### JOSEPHINE KABBES

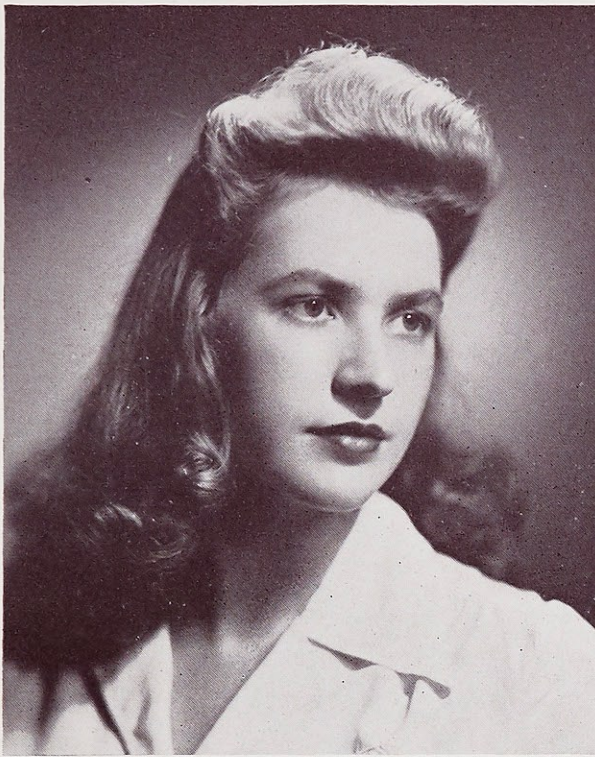
Student Government Board '44; Hall President '44; Sodality Board Member '44; LAURETANUM Associate Editor '43; Dietetics Club Treasurer '43; Spanish Club '41, '42.

### MARGARET KNECHT

Student Government Board '42, '43, President '44; Sodality Board Member '44; Dietetics Club '41, '42, '43, '44; French Club '41, '42; Class President '43; Varsity Basketball '43; May Maid '42; Who's Who '43, '44; Vodvil '41.

### DOROTHY McDONNELL

Co-Op Manager '44; Sodality Board Member '43; Spanish Club '41-'44, Secretary '42, Award Winner '41; Dietetics Club '42-'44, Vice-President '43; Chemistry-Biology Club '41-'43; C.S.M.C. Representative '43; Secretary Kansas City Section Club '43, '44; Vodvil '41.



MARIE CATHERINE KLOEPPEL

JOSEPHINE KABBES

MARGARET KNECHT

DOROTHY McDONNELL

# Senior Class

## Marian Frances Riehemann

St. Louis, Missouri  
B.S. IN DIETETICS

Natural curly hair, deep blue eyes, and dimples—perfect with her white dietitian's uniform. Steady customer of Webster's War Stamp Booth.

## Marie Renée Perez

Kirkwood, Missouri  
Ph.B. IN SPEECH

A typical Puck. A voice that charms. Deserves a service star for her four years' ushering at the American. "The play's the thing," on the stage or basketball court.

## Mary Catherine Morgan

St. Louis, Missouri  
A.B. IN ENGLISH

Efficiency expert. Always ready with a tune. Promotes intercollegiate interests. Feminist—loves frills and high heels. Puts us in The News.

## Dolores Margaret Quinlan

St. Louis, Missouri  
A.B. IN HISTORY

A Lily Pons in our midst! Four-star nominee for foreign diplomat: straight A's, knowledge of international relations, French student, and a beauty.



### MARIAN FRANCES RIEHEMANN

Loretine Circulation Manager '43; Dietetics Club '41-'44; French Club '41-'44; Chemistry-Biology Club '41-'43; Co-Op Publicity Manager '43, '44.

### MARIE RENÉE PEREZ

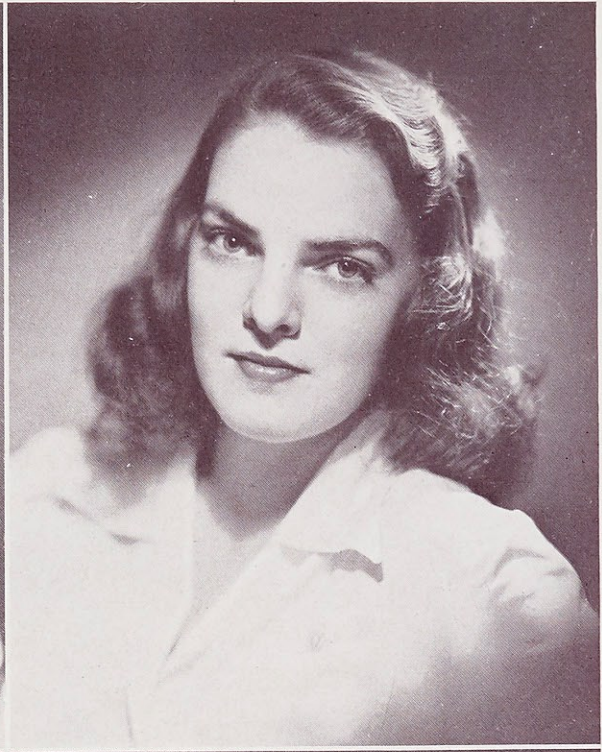
Class Treasurer '44; LAURETANUM Associate Editor '43; French Club '41, '42; Athletic Association Treasurer '42, President '44; Choral Club '42; Varsity Basketball '41-'44, Captain '44; Loretto Players '41-'44, Vice-President '43; Vodvil '41; Nominating Committee '43.

### MARY CATHERINE MORGAN

Student Government Faculty Representative '44; Class Treasurer '42; Sodality Board Member '43; Representative for St. Louis College Sodality Union '44; Vice-President St. Louis College Sodality Union '43, '44; Webster Correspondent to St. Louis University News '43, '44; Web Staff '43; Music Guild '41, '42, Secretary '42; English Club '43, '44; French Club '41, '42; Vodvil '41; Poetry Club '43.

### DOLORES MARGARET QUINLAN

Kappa Gamma Pi; Web Staff '44; Loretine Circulation Manager '43; R. F. Hartz French Award '41; Philosophy Award '42; Choral Club '41, '42; "La Voix" '41, '42, Editor '43, '44; Co-Op Purchasing Manager '44; French Club '41-'44; Dietetics Club '43, '44; International Relations Club '44; Classical Club '41, '42.



MARIAN FRANCES RIEHEMANN

MARIE RENÉE PEREZ

MARY CATHERINE MORGAN

DOLORES MARGARET QUINLAN

# Senior Class

## Marline Ruemping

Kansas City, Missouri  
B.S. IN CHEMISTRY

Clever and unusual. Marline's at home on the stage or in the chemistry lab. She writes and enacts her own radio scripts.

## Margaret Robinson

Clayton, Missouri  
A.B. IN ENGLISH

She got us in the movies—by blood money. Knack for getting things done. Meticulous from class notes to hair bows. Maggie wins friends and influences people.

## Rosemary Schneiderhahn

Glendale, Missouri  
A.B. IN ENGLISH

Petite, gracious, one smile puts you at ease. An able leader with a distinctly feminine touch. Keen interest in Catholic Action—a true Sodalist.

## Ellanora Valle

Farmington, Missouri  
B.S. IN DIETETICS

The lovely May Queen of '43. Charming and chic. Won athletic prize for posture last year. Ellie can whip up a dress or a chocolate cake.



### MARLINE RUEMPING

Kappa Gamma Pi; Student Government Class Representative '43; Class Treasurer '43; Sodality Board '43; Web Staff '42-'44; Loretine Staff '42; LAURETANUM Assistant Editor '43; Loretto Players '41-'44; English Club '43, '44, President '44; French Club '41, '42; Pevely Chemistry Prize '43; Vodvil '41.

### MARGARET ROBINSON

Kappa Gamma Pi; Student Government Class Representative '43; Treasurer '43, Board Member '44; Class President '44; Sodality Board Member '42; Web Staff '41-'43, Co-Editor '44; Loretine Staff Associate Editor '43, Co-Editor '44; Chairman of Red Cross Blood Bank '44; French Club '41-'44; Secretary-Treasurer '43; Classical Club '41-'44, Secretary-Treasurer '42, Vice-President '43; English Club '43, '44; Music Guild '41; "La Voix" Staff Member '43, '44; American Legion Award in American History '43; Who's Who '44; Poetry Club '44.

### ROSEMARY SCHNEIDERHAHN

Student Government Board Member '44; Sodality Treasurer '43, Perfect '44; Web Staff '43; Loretine Staff '44; LAURETANUM Business Manager '43; English Club '43, '44; Spanish Club '41, '42; Mission Representative '42; Vodvil '41; Biology Club '41, '43; Drum and Bugle Corps '41.

### ELLANORA VALLE

Class Secretary '43; Sodality Secretary '43; Dietetics Club '41-'44; Posture Award '43; May Maid '42, Queen '43; House Committee '43, '44; Secretary West St. Louis County Section Club '43.



MARLINE RUEMPING

MARGARET ROBINSON

ROSEMARY SCHNEIDERHAHN

ELLANORA VALLE

# Senior Class



*Nancy Jeanne Volm*

St. Louis, Missouri  
B.S. IN DIETETICS

Cheerful, peppy, and sincere. Loyal varsity fan. Sees the funny side of life. Industrious in classes, cooperative in activities.

*Ann Young*

St. Louis, Missouri  
Ph.B. IN SPEECH

Strikingly dramatic. Sophisticated, poised, and self-confident—our idea of the perfect hostess. Her talents are adaptable to radio or stage.

## NANCY VOLM

Class Vice-President '44; French Club President '43; Dietetics Club '41, '42, '43, '44, President '44; Co-Op Vice-President '43.

## ANN YOUNG

Student Government Faculty Representative '43; Class Vice-President '43; Web Staff '43, '44; Loretine Staff '43; Loretto Players '41, '42, '43, '44; Treasurer '44; English Club '43, '44; French Club '41, '42; Chairman Spring Party '43; Vodvil '41.



NANCY VOLM

ANN YOUNG

ELLEANORA VALLE  
'43 May Queen

VIRGINIA DALY  
Retiring Queen



## May Day

May day in April weather . . . The weather and not the queen held up proceedings . . . Formals and flowers . . . Strains of the Triumphal March . . . May colors against a background of green . . . Page in white satin, Queen in white marquisette . . .

Seniors in traditional daisy chain form guard of honor . . . Entertainment for her majesty: Peasant Trio, May Pole Dance by Freshmen, Solo in Waltz Time . . . Reception and Tea in the Pink Room in honor of the Queen and her attendants.



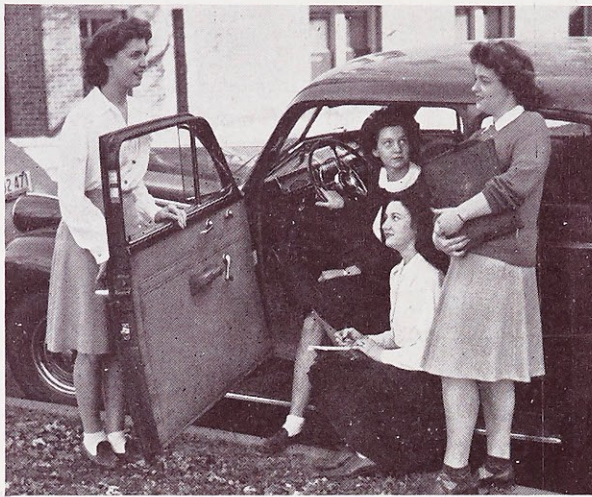
Queen and Her Court: D. Van Hoogstrate, M. Kloepfel, M. A. Lingner, B. Orr, V. Daly, E. Valle, M. J. Greenslade, T. Hunt, E. Haste, M. Costa.

# *Tomorrow*

Destined for an uncertain world, our future graduates are preparing to meet the challenge. They find in the spirit and philosophy of Webster, with Mary's guidance, the incentive toward a true perspective for tomorrow.



# Junior



M. Costa, R. Ottens, E. O'Sullivan, M. P. Almstedt.

President—

RUTH OTTENS

Vice-President—

EVELYN O'SULLIVAN

Secretary—

MARY PAT ALMSTEDT

Treasurer—

MADELEINE COSTA



Top Row: K. Kienstra, P. Fay, N. Maruca, B. Schweitzer. Second Row: M. Haring, M. G. Kane, E. Didden, J. Biller. First Row: A. R. Willard, C. Melendez, G. Mercier, P. Jones. Standing: V. Knese, E. O'Sullivan, M. Ferris, R. Ottens.

## ROSTER

Mary Pat Almstedt  
 Toddy Barbazon  
 Judy Biller  
 Madeleine Costa  
 Inge d'Alquen  
 Erna Didden

Jeanne Dolan  
 Valerie Douglas  
 Margaret Els  
 Peggy Fay  
 Mary Ferris  
 Catherine Fleming

Pat Flynn  
 Marg Haring  
 Peggy Harttman  
 Mary Ann Henckler  
 Clare Hoffmeister  
 Sylvia Horning

# Class

Peggy Jones  
 Mary Grace Kane  
 Pat Kenoyer  
 Kathleen Kienstra  
 Virginia Knese  
 Nancy Maruca  
 Carmen Melendez  
 Georgette Mercier  
 Marguerite Milford  
 Helen Muser  
 Evelyn O'Sullivan  
 Ruth Ottens  
 Joan Oulvey  
 Shirley Paden  
 Dorothy Riffel  
 Leslie Sandoe  
 Betty Marie Schweitzer  
 Aiko Shiina  
 Peggy Versen  
 Marie Vlatkovich  
 Lucille Walde  
 Bette Walsh  
 Ann Rita Willard



B. Schweitzer, D. Riffel, H. Muser, P. Jones, M. Vlatkovich,  
 J. Oulvey, C. Fleming.



Top Row: M. Costa, S. Paden, J. Oulvey, V. Douglas, C. Fleming. Second Row: M. Vlatkovich,  
 H. Muser, P. Kenoyer, M. P. Almstedt, J. Dolan, B. Walsh, P. Harttman, L. Sandoe, A. Shiina. First  
 Row: C. Hoffmeister, P. Flynn, P. Versen, I. d'Alquen. Standing: S. Horning, M. Milford, M. A. Henckler.



G. Dowd, P. O'Neill, K. Lambrechts, M. O'Brien.

# Sophomore

President—  
PEGGY O'NEILL

Vice-President—  
GERRY DOWD

Secretary—  
MARGIE O'BRIEN

Treasurer—  
KATHY LAMBRECHTS



Top Row: S. Nies, M. Fitzgerald, M. O'Brien, D. Van Hoogstrate, I. Zeis. Second Row: C. Mitchell, P. Lowey, D. Mitchell, P. Collins, R. Williamson, J. Tenge, V. Deutchmann. First Row: A. Skidmore, J. Morgan, J. Morgan, M. Morheuser, L. Meiners, J. Lubeley. Standing: D. Federer, S. Lampman, H. Walsh, M. Nicholaus, M. Kommer.

## ROSTER

Anna Marie Alsobrook  
Pat Collins  
Vera Deutchmann  
Marie Donnelly  
Gerry Dowd  
Dory Federer  
Jane Fitzsimons  
Mary Fitzgerald

Kathleen Froeschl  
Marie Gillespie  
Joan Harrigan  
Mary Louise Hoch  
Rosemary Koestler  
Marcella Kommer  
Bernice Koster

Kathy Lambrechts  
Shirley Lampman  
Barbara Laney  
Doris Mae Leber  
Mel Letzig  
Peggy Lowey  
Joan Lubeley  
Bette Macken

# Class

Luetta Meiners  
 Margaret Mills  
 Catherine Mitchell  
 Dorothy Mitchell  
 Jean Morgan  
 Jeanette Morgan  
 Marilyn Morheuser  
 Chris Musso  
 Shirley Nies  
 Margaret Nicholas  
 Margie O'Brien  
 Peggy O'Neill  
 Joanne Oyabe  
 Mary Ann Planthold  
 Nancy Ries  
 Ann Skidmore  
 Dorothy Sympson  
 Becky Taylor  
 Joan Tenge  
 Dorothy Van Hoogstrate  
 Helen Walsh  
 Terry Wand  
 Kay Wheeler  
 Jean Willard  
 Robin Williamson  
 Mary Wood  
 Irene Zeis  
 June Zerwekh



M. Nicholas, B. Macken, J. Tenge, D. Van Hoogstrate,  
M. Gillespie, M. Letzig.



Top Row: J. Willard, M. L. Hoch, J. Oyabe, B. Koster, J. Harrigan, P. O'Neill, M. Mills. Second Row:  
 B. Macken, K. Lambrechts, M. Gillespie, D. M. Leber, C. Musso, D. Sympson, M. Donnelly, B. Laney,  
 A. M. Alsobrook. First Row: B. Taylor, R. Koestler, G. Dowd, J. Fitzsimons, K. Froeschl. Standing:  
 M. A. Planthold, T. Wand, M. Letzig, K. Wheeler.



R. Mount, A. H. Chase, M. McIntyre, R. Burns.

# Freshmen

- President—  
ANNE HARMON CHASE
- Vice-President—  
ROSEMARY BURNS
- Secretary—  
RUTH MOUNT
- Treasurer—  
MARGIE McINTYRE



Top Row: Alma Burcke, M. Hensgen, M. Greaving, M. L. Cunningham, L. Conrath, P. Gibson, A. Garcia, M. Harrison, A. Godar, J. Blottman, B. Convy. Second Row: M. Conboy, R. Burns, M. L. Berry, J. Chauvin, M. C. Geerling, M. Fisk, H. Byrne, A. H. Chase, K. Blomes. First Row: G. Bansbach, V. Dill, P. Hoffman, M. E. Christman, M. A. Spalding, A. Madden. Standing: B. Cooper, C. Hennenfent.

## ROSTER

Gay Bansbach  
Trudy Bernard  
Mary Louise Berry  
Katie Blomes  
Jean Blottman  
Alma Burcke  
Rosemary Burns  
Helen Byrne

Peggy Casey  
Anne Harmon Chase  
Jacque Chauvin  
Mary Ellen Christman  
Betty Coffey  
Maggie Conboy  
Mary Lee Condon  
Loyola Conrath

Betty Convy  
Betty Cooper  
Mary Louise Cunningham  
Virginia Dill  
Grace Jane Dyer  
Rita Fields  
Marie Fisk  
Adela Garcia

# Class

Mary Clare Geerling  
 Pat Gibson  
 Audrey Godar  
 Marlyn Greaving  
 Millie Harrison  
 Reedy Hennenfent  
 Maureen Hensgen  
 Joy Herman  
 Pam Hoffman  
 Betty Huber  
 Teresa Huskey  
 Mary Louise Jeep  
 Peggy Jostedt  
 Jean Kienstra  
 Betty Kirchoff  
 Ann Kretschmer  
 Mary Louise Lampen  
 Lorraine Ludwig  
 Gertrude Mabry  
 Ann Madden  
 Pat Manion  
 Mary Catherine McDonough  
 Margie McIntyre  
 Mary Virginia Michel  
 Katherine Miles  
 Putsy Mistrot



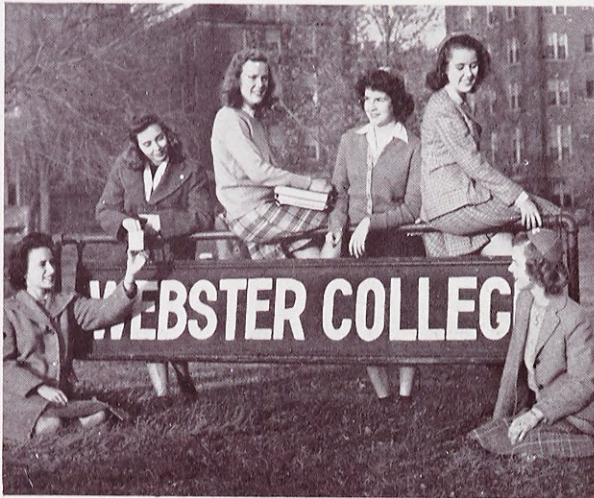
P. Gibson, B. L. Ruprecht, P. Nolan, B. Wolff.



Top Row: B. L. Ruprecht, A. Ottersbach, F. Vrooman, P. Casey, P. Walsh, G. Bernard, T. Shiina.  
 Second Row: J. Sanfileben, P. Jostedt, D. Schulte, B. L. Coffey, R. Perry. First Row: M. Ryan, I. Vatterot,  
 M. L. Jeep. Standing: N. Wright, J. Herman.

# Freshman

## ROSTER



G. Bansbach, M. V. Michel, I. Vatterot, G. Bernard,  
N. Wright, K. Blomes.

Pauline Miyagawa  
Marie Morheuser  
Ruth Mount  
Mickey Morrissey  
Jackie Niehoff  
Pat Nolan  
Mary Jane O'Connell  
Aurelia Ottersbach  
Lois Paden



Top Row: M. L. Rogers, M. J. Reid, M. Morrissey, M. A. Powell, I. Robinson. Second Row: E. Willett,  
M. L. Condon, P. Powers, R. Weny. First Row: P. White, M. A. Schaff, B. Wolff, M. McIntyre, P. Noian,  
J. Wheeler. Standing: R. Reid, M. Samuels, R. Fields.

Roberta Perry  
Mary Arlene Powell  
Pat Powers  
Mary Jane Reid  
Rosemary Reid

Mary Riffel  
Isobel Robinson  
Mary Lou Rogers  
Betty Lou Ruprecht  
Margie Ryan

Mordie Samuels  
Jo Sanftleben  
Mary Ann Schaff  
Dorothy Schulte  
Terry Shiina

# Class

Jean Sinclair  
 Virginia Snyder  
 Mary Agnes Spalding  
 Pat Tyler  
 Ione Vatterot  
 Kathie Vercellino  
 Freddie Vrooman  
 Pat Walsh  
 Rebecca Wengert  
 Mary Wellinghoff  
 Rita Weny  
 Jane Wheeler  
 Pat White  
 Mary Jo Wieneke  
 Eunice Willett  
 Betty Wolff  
 Nancy Wright



Standing: M. A. Powell, M. Morheuser, J. Chauvin.  
 Sitting: R. Reid, M. J. Reid, L. Ludwig, B. L. Coffey.



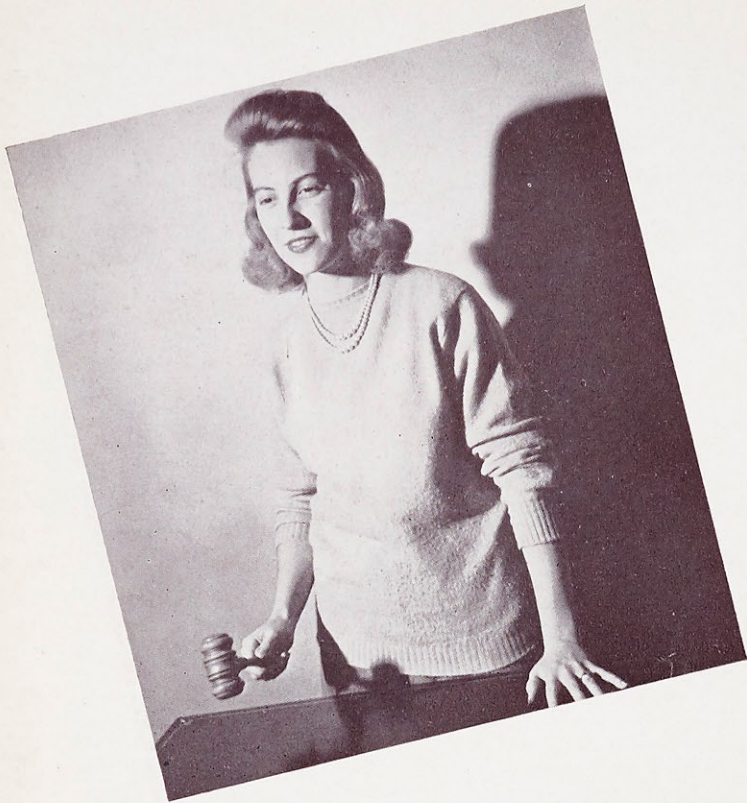
Top Row: M. L. Lampen, J. Niehoff, R. Mount. Third Row: B. Kirchoff, R. Wengert, T. Huskey, L. Paden, P. Miyagawa, K. Miles, M. Morheuser. Second Row: J. Sinclair, P. Manion, L. Ludwig, B. Huber, K. Vercellino. First Row: G. Mabry, P. Tyler, M. V. Michel, J. Kienstra, A. Kretschmer, M. J. O'Connell. Standing: V. Snyder, B. Mistrot.

*Always* ~

*Comrades of Mary*

In all activities the Webster girl opens her heart to Mary. Whether at work or at play, she makes Mary her inspiration, her model, her friend—now and always.





Margaret Knecht, President of the Student Government Association.

## Workshop of Democracy

Every girl a vital part of the organization . . . Weekly meetings . . . Plans set forth by the Board, discussed and voted on by the members of the S. G. A. . . . In the calendar of social events were: September 14, introduction of the Freshmen to Life at Webster . . . November 20, the date of the Fall Open House . . . Queen of Hearts crowned at Big Sister-Little Sister Party on Valentine's Day . . . All other projects were side shows compared with the Campus Carnival in April . . . May Day concluded the social year.

### REPRESENTATIVES

MARGARET ROBINSON  
 ROSEMARY SCHNEIDERHAHN  
 MARY CATHERINE MORGAN  
 JOSEPHINE KABBES  
 RUTH OTTENS  
 CLARE HOFFMEISTER  
 PEGGY O'NEILL  
 MARILYN MORHEUSER  
 ANNE HARMON CHASE  
 MARY LOUISE ROGERS

### OFFICERS

President—  
 MARGARET KNECHT  
 Vice-President—  
 MARGARET MARY HARING

Secretary—  
 MARY THOMASINE HUNT  
 Treasurer—  
 MARY GRACE KANE



Top Row: A. Chase, M. Morheuser, M. L. Rogers. Bottom Row: P. O'Neill, M. Haring, M. G. Kane.



R. Ottens, M. Knecht, M. Robinson, R. Schneiderhahn, M. C. Morgan, J. Kabbes, T. Hunt, C. Hoffmeister.

## Everyday Catholicity

Board meetings every other Monday, general meetings on Friday . . . Probation period for Freshies, reception on December 8 . . . Freshmen study Gregorian Chant . . . Project for the year—study clubs: Racism, Pope's Peace Plan, and Marriage . . . At Christmas, Sodality members entertain the old folks at the Little Sisters of the Poor . . . Religious articles, admission to Sodality program, sent to Service camps . . . Family rosary sponsored by Our Lady's Committee . . . Literature Committee promotes pamphlet drive for men in Service . . . Attractive, clever displays on bulletin board put spirituality in everyday living . . . Freshmen conduct meeting in April . . . Sodality May Day—chapel ceremony, Pat Kenoyer, new prefect, crowns the Blessed Virgin.



Rosemary Schneiderhahn, Prefect of the Sodality.

### OFFICERS

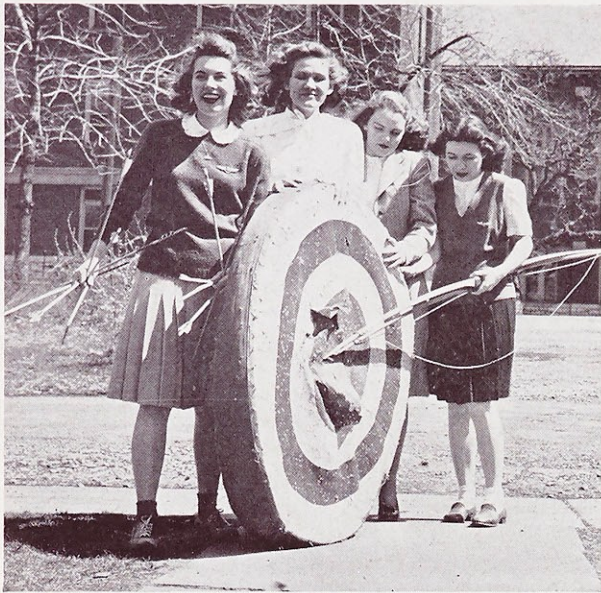
Prefect—	ROSEMARY SCHNEIDERHAHN	Secretary—	MARGARET NICHOLAUS
Vice-Prefect—	PAT KENOYER	Treasurer—	RUTH OTTENS



Student Spiritual Council—Standing: A. R. Willard, M. Knecht, M. Kloepfel, R. Ottens, B. Convey, M. C. Morgan, R. Schneiderhahn. Sitting: M. Nicholas, M. Donnelly, V. M. FitzGibbon, D. McDonnell, P. Kenoyer, J. Kabbes.



Ann Rita Willard, Marie Donnelly.



Gini Knese, Helen Hagen, Renee Perez, Gerry Dowd.

#### OFFICERS

- President—  
 Vice-President—  
 Secretary—  
 Treasurer—
- RENEE PEREZ  
 VIRGINIA KNESE  
 GERRY DOWD  
 HELEN HAGEN

Betty Cooper, Gini Knese, Dorothy Sympson, Mel Letzig.



Back Row: B. Schweitzer, H. Hagen, P. Tyler, P. Fay, J. Blottman, V. M. FitzGibbon. Second Row: P. O'Neill, B. L. Colley, T. Wand, S. Lampman, R. Ottens. First Row: Miss Welz, Coach; R. Perez, Captain.

## The Sporting Thing

Fulfills its aims—health and sportsmanship . . . Bowling in your *spare* time . . . Class volleyball contests—seniors victors . . . Pingpong, Red Room rivalry . . . Archery for pleasure and posture . . . Tennis tournament . . . Baseball, our spring tonic . . . Basketball, intermural games—fight to the finish—freshmen, the champs . . . Hard-to-beat varsity, excited crowds, thrilling games, well worth the loyal support received . . . Thrill-packed season resulted in four victories and three defeats . . . Stiff competition with Maryville, Fontbonne, Harris Teachers, and the Alumnae . . . Vivacious Captain Perez . . . Cheers led by the sprightly foursome in Gold and White . . . For Gini, Betty, Dottie, and Mel, now let us cheer—we think they're swell . . . One of the favorite activities of the Association: high school play day when Catholic high school girls unite and play—we supervise . . . Then Field Day—we play hooky on our own campus . . . We slave over skits to make

them minor Broadway productions . . . Our genius deserts us on the athletic field—last-minute entries, fast and furious games . . . A toast to the Varsity—the Athletic Banquet; Oscars awarded to the most outstanding.

## Lauretanum

Ev gets appointed, we get chosen . . . First meeting — excitement over new layouts . . . Frantic search for adjectives . . . Balancing the budget — scales will hold snapshots and division pages . . . Cover conscious . . . Cutting and mounting . . . Slaving away for hours on Wednesday afternoons . . . Rounding up the girls for pictures . . . Thrill of seeing our plans materialize . . . Priority problems . . . Photographer wanted — found — drafted . . . Anxious waiting for pictures to be returned . . . Struggle to personify Webster in print — cramming 210 days into 40 pages . . . Deadline met . . . From the dummy to the press to you.



Gini Knese, Evelyn O'Sullivan

### STAFF

Editor-in-Chief—  
EVELYN O'SULLIVAN  
Assistant Editor—  
VIRGINIA KNESE  
Associate Editor—  
PAT KENOYER

Associate Editor—  
ANN RITA WILLARD  
Business Manager—  
PEGGY FAY  
Circulation Manager—  
MARY FERRIS



Mary Ferris, Peggy Fay, Pat Kenoyer, Ann Rita Willard.



Mary Ferris, Peggy Fay, Ann Rita Willard, Gini Knese, Pat Kenoyer, Evelyn O'Sullivan.



Officers: H. Hagen, President; C. Fleming, Vice-President;  
R. Perez, Secretary; A. Young, Treasurer.  
M. Ruemping, T. Hunt, N. Maruca, P. Collins, C. Fleming, R. Perez,  
A. Young, A. Skidmore, S. Horning, H. Hagen, E. O'Sullivan.



J. Herman, A. Alsobrook, K. Lambrechts, M. E. Christman, R. Perry,  
N. Ries, S. Nies, L. Meiners, P. Manion, P. Hoffman, M. L. Condon,  
P. White.

## Life Begins At 8:30

Informal meetings . . . Views and reviews on current plays at The American . . . Trips to Roof Top to see our own members in action . . . Enjoyable plays presented by the Freshmen . . . Annual Shakespearian performance, "The Taming of the Shrew."

## Melody Makers

Hourly practices every week . . . An added attraction at our Monday assemblies . . . Under the vital and talented direction of Virginia Snyder . . . Kindly fulfilled all requests for Notre Dame's Victory March . . . Entertained the Men's Service Clubs of Webster Groves in February.



M. L. Hoch, J. Harrigan, A. Godar, G. Dowd, K. Wheeler, P. Powers,  
J. Morgan, A. Garcia, V. Snyder.



M. Ferris, K. Vercellino, M. L. Berry, K. Blomes, J. Blottman, B. L. Coffey.



FRENCH CLUB

Officers: B. M. Schweitzer, President; P. Jones, Secretary-Treasurer.  
 Back Row: L. Ludwig, M. Mills, A. M. Alsobrook, J. Tenge, P. Jones,  
 B. M. Schweitzer, D. Quinlan, M. O'Brien, N. Volm, J. Fitzsimons, T. Bar-  
 bazon. Front Row: V. Knese, R. Reid, K. Wheeler, M. Donnelly, P. O'Neill,  
 M. J. Reid, M. A. Schaff, P. Powers.



SPANISH CLUB

Officers: M. Milford, President; M. Ferris, Secretary; E. Figueroa, Treasurer.  
 Back Row: J. Kienstra, R. Fields, B. L. Ruprecht, D. Schulte, M. Milford,  
 M. Ferris, P. Hartman, R. Wengert, G. Mercier. Front Row: J. Willard,  
 J. Biller, P. Mistrot, E. O'Sullivan, C. Hennenfent.

Modern Language Clubs

"Le Cercle Francais" entertained French soldiers in December . . . Sponsored Lt. Gramont as assembly speaker . . . Publishes "La Voix" . . . The Spanish Club provided fun for both faculty and students at the party for new members . . . Special assembly celebrated Pan-American Day.

Diplomatic Dealings

Theme for '44: Racism . . . Lively discussions on controversial subjects . . . Dr. Donovan's club . . . Affiliated with National International Relations Club . . . Participated in regional meeting at Maryville in March . . . Membership limited . . . Last meeting opened to those interested in I. R. C.



E. Davila, M. Kloepfel, G. Mercier, C. Melendez, A. R. Willard, P. Kenoyer, E. Figueroa, K. Hosoura, P. Jones, D. Federer, M. Milford.  
 Sitting on Floor: T. Shiina, A. Garcia, D. Quinlan.



Officers: Marie Kloepfel, Vice-President; Enid Davila, President; Georgette Mercier, Secretary-Treasurer; Kiyoko Hosoura.



Officers: N. Volm, President; M. A. Henckler, Vice-President; C. Hofmeister, Secretary; E. Didden, Treasurer.  
 Back Row: M. Els, J. Oulvey, M. A. Henckler, L. Walde, M. Riehemann, B. Walsh, R. Ottens, C. Hofmeister. Second Row: M. Vlatkovich, M. Haring, T. Barbazon, N. Volm. First Row: E. Valle, D. McDonnell, K. Kienstra, G. Mercier.

Back Row: J. Fitzsimons, M. Fitzgerald, J. Morgan, M. A. Schaff, K. Wheeler, S. Lampman, B. Kirchoff. First Row: C. Hennentent, J. Morgan, B. Mistrot.

## *Kitchen Kapers*

Quarterly meetings . . . Guest speakers, movies . . . Meetings open to prospective members . . . Publication: "The Kitchen Keyhole" . . . Members contribute to war effort by serving in hospital kitchens . . . Last meeting held at a special dining place; officers elected for the coming year.

## *C. S. M. C.*

Functions through the Sodality . . . Featured sale of Hummel cards at Christmas time — proceeds this year financed various parties for the underprivileged . . . Aid missionaries by contributing their share of the Student Activity Fee to the Society for the Propagation of the Faith.



Officers of C.S.M.C.: Marie Fisk, Secretary-Treasurer; Viola Mae FitzGibbon, President.



Audrey Illig, Katie Blomes, Jeanette Morgan.



LORETTINE STAFF  
 M. Kloepfel, D. Riffel, K. Kienstra, D. Van Hoogstrate, H. Hagen,  
 M. Robinson, J. Lubeley, M. Ferris, A. Illig.



WEB STAFF  
 F. Vrooman, P. Kenoyer, M. Ferris, M. Robinson, M. Kloepfel, V. Knese,  
 A. Illig, H. Hagen, V. M. FitzGibbon.

## Webster in Print

Maggie and ReRe proved it wasn't fatal to change editorships in midstream . . . Innovations: Webster College Poll, more pictures — more student appeal . . . Features, peppy and pertinent to college life . . . News always on the press or in the process . . . Deadline every two weeks.

Turnabout was fair play; Maggie served as Loretine editor first semester, ReRe the second . . . Alumnae writers in first issue . . . Webster's quarterly edition of poetry and prose . . . True picture of college thought . . . Outlet for students' creative talents.



Co-editors of Web and Loretine: Marie Kloepfel, Margaret Robinson.



Reporters on Web and Loretine: Standing: M. Nicholaus, B. Macken, D. Federer, M. Ruemping, C. Fleming, P. Kenoyer. Sitting: D. Van Hoogstrate, H. Muser, A. R. Willard, M. Morheuser, K. Lambrechts.



Officers: H. Hagen, President; A. Illig, Secretary-Treasurer.  
D. Riffel, P. Jones, P. Kenoyer, H. Hagen, M. Kloepfel, A. Illig,  
M. Robinson, R. Williamson.



Officers: V. Knesa, President; M. Kommer, Vice-President;  
M. Millford, Secretary-Treasurer.  
Standing: V. Knesa. First Row: E. O'Sullivan, M. Millford, P. Kenoyer,  
B. M. Schweitzer. Back Row: P. Fay, J. Blottman, M. Robinson, D. Federer.

### *Metrical Misses*

"Poems are made"—by the members! . . . Most exclusive club in school . . . Members must be inspired by Muse, produce a masterpiece, and on the basis of its merit, be voted in . . . An original poem, the password to every meeting.



Officers: M. Ruemping, President; H. Hagen, Vice-President.  
M. C. Morgan, H. Muser, D. Riffel, A. R. Willard, M. Ferris, P. Kenoyer,  
V. M. FitzGibbon, R. Schneiderhahn, A. Illig, M. Robinson, M. Kloepfel,  
M. Ruemping.

### *Mythological Musings*

Delving into mythology: its relation to the tragedies of Aeschylus, Sophocles, and Euripides, and as a background for writing . . . Monthly intercollegiate meeting . . . Hostesses to St. Louis University Classical Club in April.

### *Book Banter*

Book reviews . . . Shades of Frank Sullivan . . . Informality the keynote . . . Catholic slant on recent books . . . Only upperclassmen eligible for membership . . . Exchange of opinions—authoritative viewpoints given by Srs. Mary Louise and Jean Carmel.



Officers: Dorothy McDonnell, Manager; Enid Davila, Secretary; Dorothy Riffel, Treasurer; Marian Riehemann, Dolores Quinlan, Buying Managers.  
D. Riffel, E. Valle, M. Riehemann, D. Quinlan, D. McDonnell.



Pat Kenoyer, General Chairman of War Bond and Stamp Drive; Class Chairmen: Pat Kenoyer, Juniors; Renee Perez, Seniors; Mary Clare Geerling, Freshmen; Betty Macken, Sophomores.

## Co-Op

Members of S. G. A. shareholders . . . Webster's General Store . . . Under new management—project of Sociology students . . . Aims to acquaint students with the cooperative movement . . . Sells anything from toys to *Kleenex* . . . The more you buy, the more you earn.

## Pause and Note

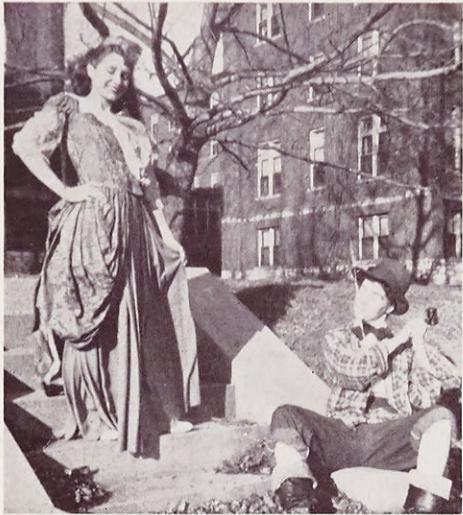
Selections illustrating music trends through the ages . . . Modern composers, this year's theme . . . Special program by Sister Adeline and Sister Joecile . . . The Little Symphony and Virginia Snyder—a wonderful treat.

## War Bond Booth

Hitler plastered with stamps . . . Goal—\$300,000 for Heavy Bomber . . . Special War Bond Rally aroused a spirit of sacrifice . . . Class rivalry, an added incentive . . . Buying War Bonds and Stamps—*using our dollars and sense.*



Officers: Peggy Versen, President; Marie Donnelly, Vice-President; Inge d'Alquen, Secretary-Treasurer.  
Standing: J. Harrigan, K. Wheeler, J. Lubeley, E. O'Sullivan, P. Harttman, V. Douglas, P. White, M. Donnelly, M. Kommer, M. L. Hoch. Sitting: I. d'Alquen, P. Versen.



Watch your step  
 Life's little temptations  
 Grand opening  
 'Ten-shun!

The Doctor likes it  
 Look at the birdie  
 Webster's pin-up girls  
 Happy on American ground

All this and the Manchester, too  
 Maggie  
 Gla-mour  
 Those hectic days