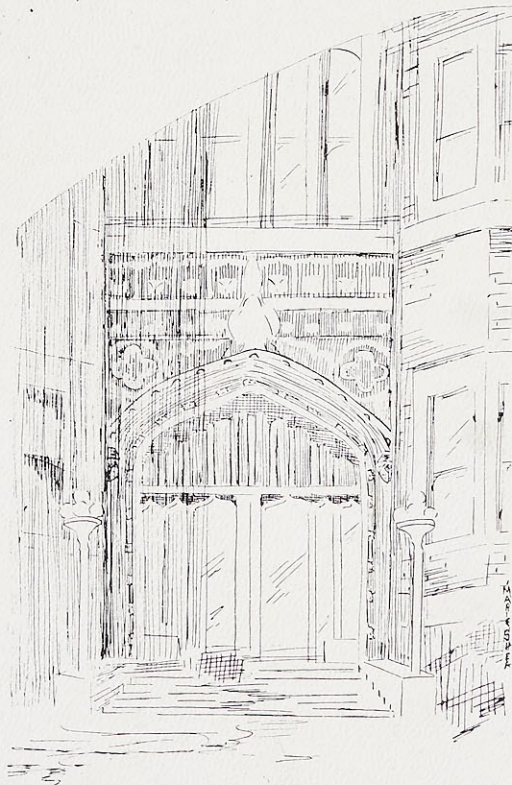


Lauretanum



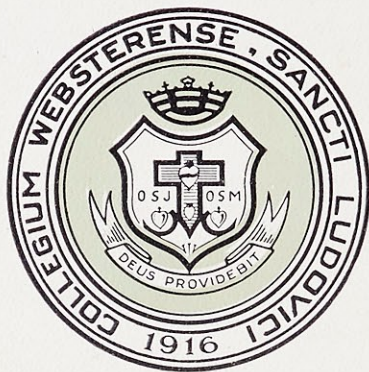
1926

# EX LIBRIS



*Lauretanum.*

WEBSTER COLLEGE  
WEBSTER GROVES  
MISSOURI  
1926





NORTH VIEW OF BUILDING

## *To First Lauretanium*

By ITS EDITOR



As I gaze at your thin blue cover,  
And read of the things you tell,  
My thoughts like the thoughts of a lover,  
In proud exaltation swell.

You were only a feeble beginning  
Of the best that is to come:  
But praises you'll ever be winning,  
As long as praises are sung.

For the volumes that come behind you,  
No matter their cost in gold,  
Must trace back their glory to find you  
The first that our history told.

And when fame of our Alma Mater  
Has spread through East and West,  
A year book more handsome and greater,  
Will show how she stood the test.

But the first Lauretanium we cherish,  
With its faded cover of blue,  
As a proof of the *will* to establish,  
In the minds of a faithful few.

# FOREWORD

MAY this Annual keep alive in our hearts a fond memory of our Alma Mater and recall ever and again the scenes and cherished recollections of our college life. May it serve as a graphic reminder of the friendships of our care-free, happy college days.

May it acquaint our readers with the daily life of the college girl—and her varied interests. And may each one that this book reaches find some particular pleasure within its pages.

To

*You Our Reverend Professors*

*whose sympathy, loyalty and  
wisdom have inspired our  
highest endeavors and  
ambitions*

*Our Book Is Affectionately  
Dedicated*

*as an acknowledgment of the  
pre-eminent place you will  
ever have in the memory  
of the*

*Class of Nineteen Twenty-Six*



MAIN ENTRANCE



VIEW FROM LOCKWOOD AVENUE



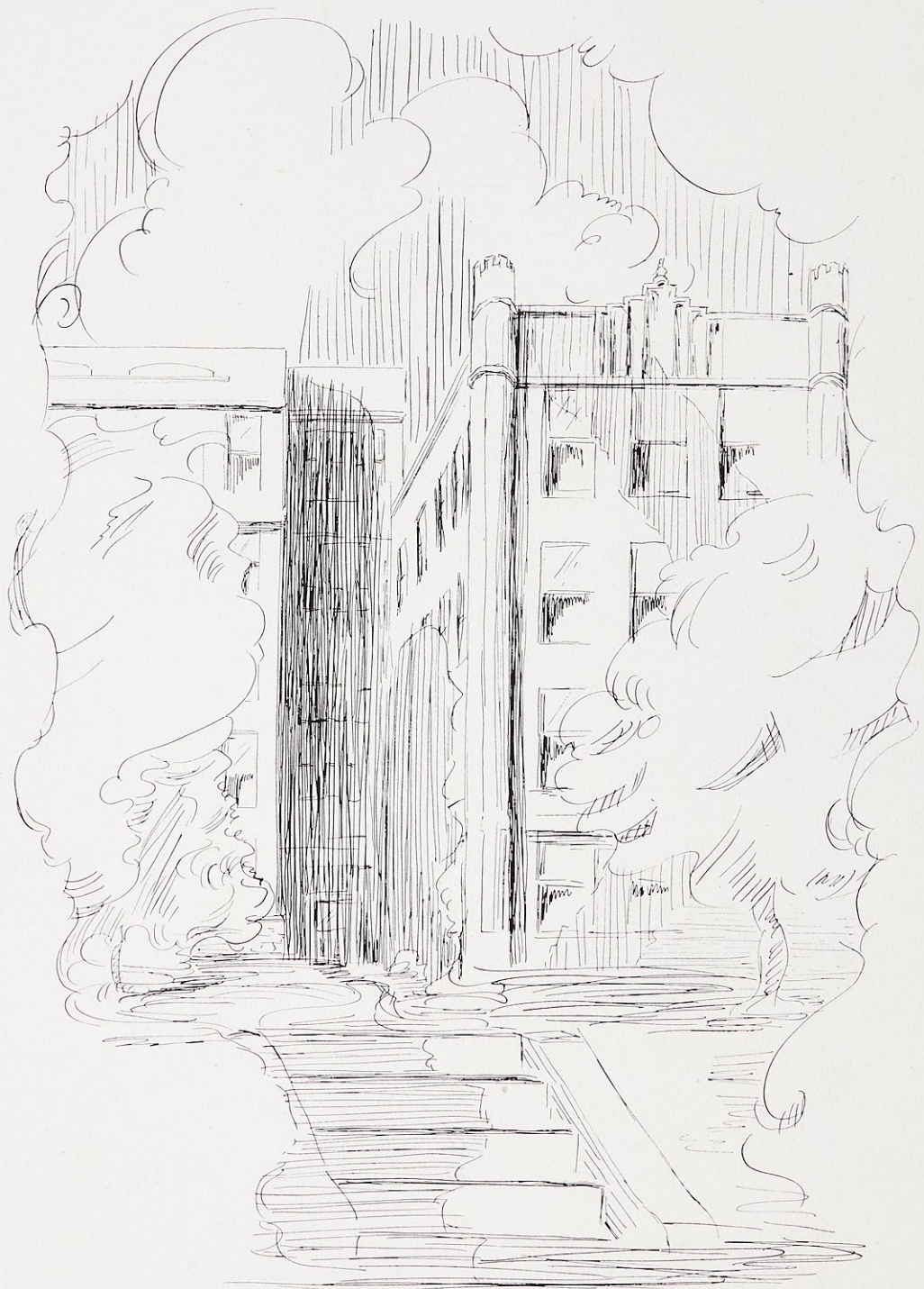
THE TOWERS



VIEW FROM CAMPUS



THE CHAPEL OF ALL SAINTS



EAST WING OF BUILDING

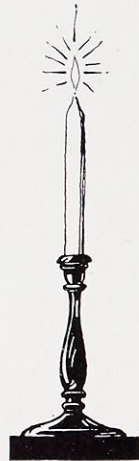
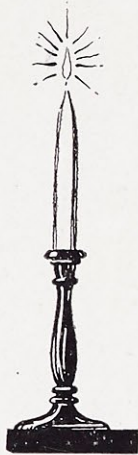
WD



MOST REVEREND JOHN J. GLENNON, D. D.  
*Archbishop of St. Louis*

W.C.

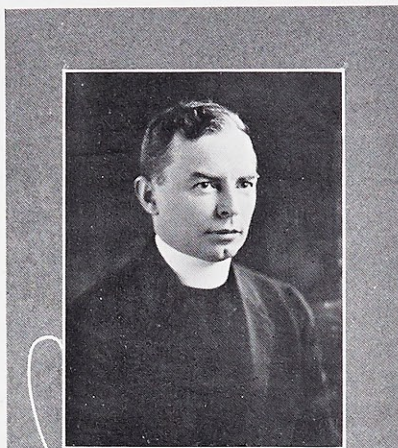
TO MOTHER LINUS and the Sisters of the Faculty, this page is affectionately dedicated, in loving gratitude for their unceasing devotion to our every interest. To their example and influence we owe a great measure of our success and the memory of their unending zeal will be always an inspiration ever impelling us forward.



*Faculty*

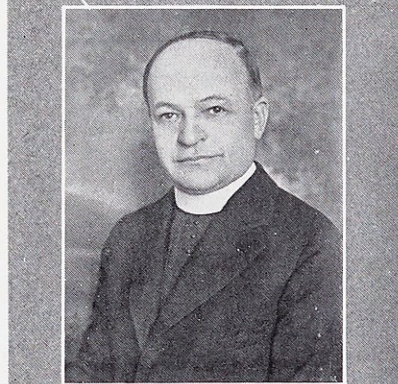
REVEREND F. V. CORCORAN, C. M.,  
PH. D., S. T. D.,

*Professor and Head of Department of  
Philosophy.*



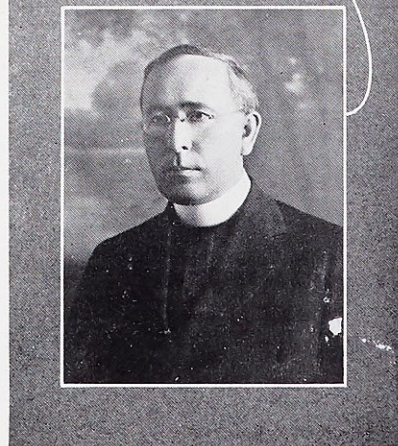
REVEREND C. L. SOUVAY, C. M.,  
PH. D., D. S. S.,

*Professor of Biblical History.*



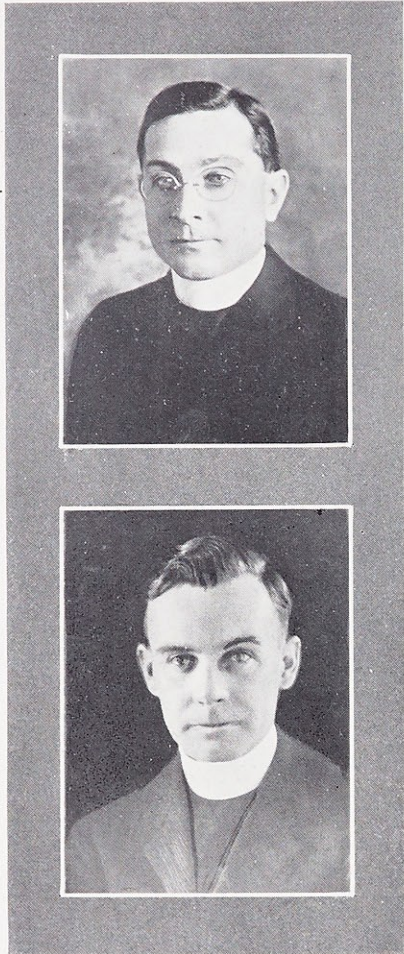
REVEREND J. P. DONOVAN, C. M.,  
J. C. D.,

*Professor of Sociology.*



WC

*Faculty*



REVEREND J. W. CONROY, C. M.,  
S. T. D.,

*Professor and Head of Department of History.*

REVEREND J. P. O'MALLEY, C. M.,  
PH. D.,

*Professor and Head of Department of Religion.*

Faculty

MISS LUCY REYNOLDS, A. B.,  
*Instructor in Physical Education.*

MISS BETTY JOHNSON, B. J.,  
*Instructor in Journalistic Writing.*



*Faculty*



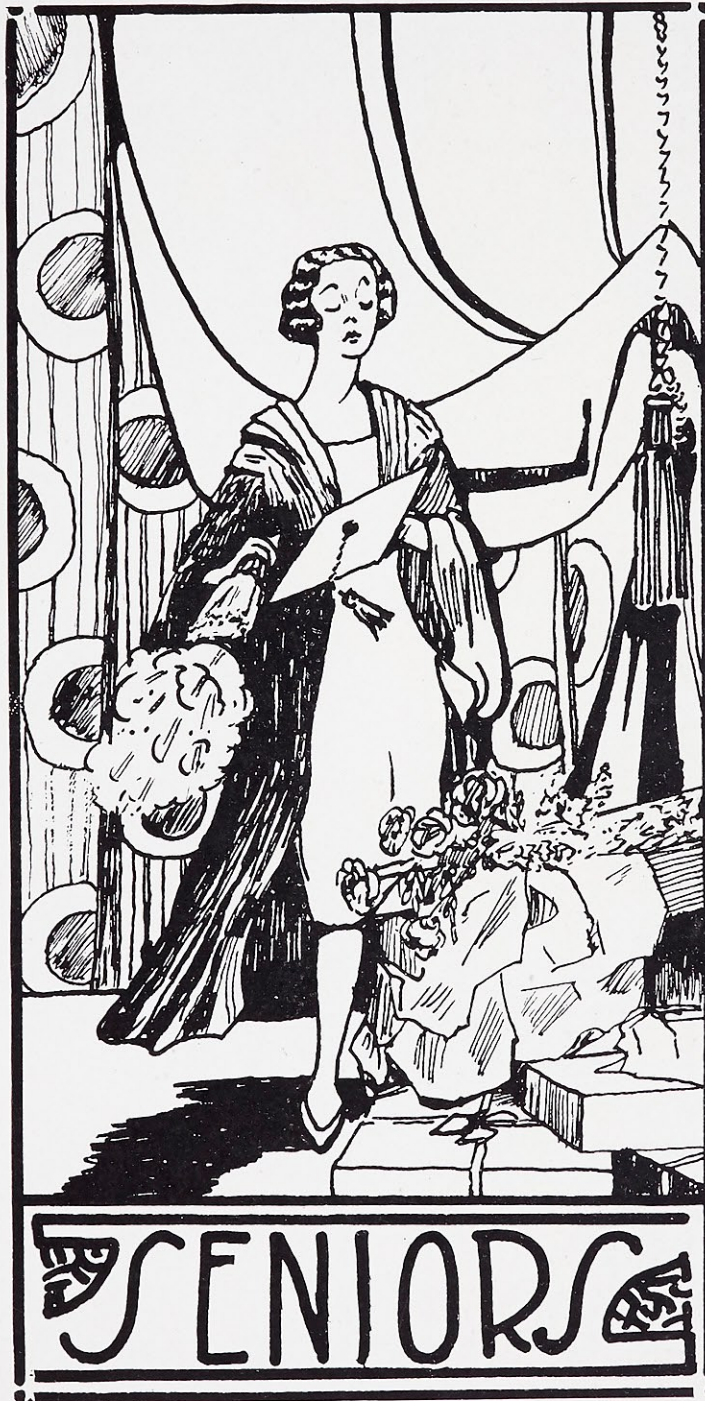
MRS. ANNA MCCLAIN SANKEY,  
*Professor and Head of Department in  
Expression.*



MARCELLE PREVOST, A. B., DIPLOME  
DE PROFESSEUR DE FRANCAIS A  
L'ETRANGER, U. OF PARIS,  
*Instructor in French.*



LOUIS E. JAMES, A. M.,  
University of Indiana  
*Professor of Physics.*





LUCINDA CLEMENTS, A. B.  
OWENSBORO, KENTUCKY

*Senior Expression Diploma '26.*  
*Class President '26.*  
*Class Treasurer '24.*  
*Assistant Editor Loretine '25, '26.*  
*Sodality '23, '24, '25, '26.*  
*Prefect Sodality '26.*  
*Secretary Sodality '25.*

*President C. S. M. C. '25.*  
*Vice-President C. S. M. C. '24.*  
*Dramatics '23, '24, '25, '26.*  
*Athletics '23; Track '23.*  
*Choral Club '24, '25, '26.*  
*Treasurer Choral Club '26.*

W.C.



NAN BUTLER SHALLCROSS, A. B.  
KIRKWOOD, MISSOURI

*Class Vice-President '26.*  
*Assistant Exchange Editor Loretine '26.*  
*Dramatics '22, '24.*  
*Athletics '22.*  
*Sodality '22, '24, '25, '26.*  
*Hockey '22.*



MARGARET MOWREY, A. B.  
ST. LOUIS, MISSOURI

*Class Treasurer '23, '25.*  
*Class President '24.*  
*Class Secretary '26.*  
*Assistant Editor Loretine '25.*  
*Editor-in-Chief Loretine '26.*  
*Sodality '23, '24, '25, '26.*

*Dramatics '24, '25, '26.*  
*Athletics '23, '24, '25.*  
*Basket-ball '23, '24.*  
*Track '23, '24.*  
*Hockey '23.*  
*Choral Club '24.*



MARY ELIZABETH NEWELL, A. B.  
ST. LOUIS, MISSOURI

- Class Treasurer '26.*
- Assistant Editor Laetatum '25.*
- Advertising Manager Laetatum '26.*
- Sodality '23, '24, '25, '26.*
- Vice-President Athletic Association '26.*
- Dramatics '25, '26.*
- Track '23.*
- Athletics '23, '24, '25, '26.*



GENEVIEVE BARTHEL, A. B.  
ST. LOUIS, MISSOURI

*Senior Expression Diploma '26.*

*Class Vice-President '25.*

*Class Secretary '24.*

*Advertising Manager Loretine '25.*

*Assistant Editor Lauretanum '25.*

*Editor-in-Chief Lauretanum '26.*

*Sport Editor Web '25.*

*Field Day Medal '24.*

*Sodality '23, '24, '25, '26*

*Sodality Officer '26.*

*Dramatics '23, '24, '25, '26.*

*Athletics '23, '24, '25, '26.*

*Hockey '23, '24.*

*President Athletic Association '26.*

*Secretary Athletic Association '25.*

*Basket-ball '23, '24, '25, '26.*

*Track '23, '24, '25, '26.*

*Captain Class Basket-ball Cup Team '24.*

WC



JOSEPHINE BEUTNER, A. B.  
BUFFALO, NEW YORK

*Canisius College '23, '24, '25.*  
*Assistant Prefect Sodality '22.*  
*Assistant Exchange Editor Loretine '20.*  
*Associate Editor Loretine '22.*  
*Sodality '19, '20, '22.*  
*Dramatics '19, '20, '22.*

WC



MARTHA BRADFISH, A. B.  
WEATHERFORD, TEXAS

*Circulation Manager Loretine '26.*  
*Sodality '23, '24, '25, '26.*  
*Vice-President C. S. M. C. '25.*  
*Athletics '23.*  
*Choral Club '25.*



ADELE BURKART, LITT. B.  
DONALDSON, ARKANSAS

*Class Historian '26.*

*Business Manager Lauretanum '26.*

*Assistant Editor Lauretanum '25.*

*Assistant Editor Loretine '25.*

*Dramatics '24, '25, '26.*

*Sodality '23, '24, '25, '26.*

*Athletics '23, '24.*

*Basket-ball '23, '24, '25.*

*Hockey '23; Track '23, '24.*

*Choral Club '23, '24.*

W.C.



LOUISE MURPHY, A. B.  
ST. LOUIS, MISSOURI

*Class President '25.*  
*Assistant Editor Loretine '24.*  
*Assistant Advertising Manager Lauretanum '26.*  
*Sodality '23, '24, '25, '26.*  
*Vice-Prefect Sodality '26.*  
*Dramatics '24, '25, '26.*  
*Athletics '24, '25, '26.*  
*Vice-President Athletic Association '24.*  
*Basket-ball '24, '25, '26.*

WC



LUCY REYNOLDS, A. B.  
WEBSTER GROVES, MISSOURI

*Lauretanum Art Editor '26.*  
*Physical Director '22, '23, '24, '25, '26.*



HEDWIG STOCKER, A. B.  
SALT LAKE CITY, UTAH

- Class Secretary '23.*
- Assistant Editor Loretine '25.*
- Treasurer Laoretanum '26.*
- Sodality '23, '24, '25, '26.*
- Secretary Sodality '26.*
- Ways and Means Committee C. S. M. C. '25.*
- Chairman Catechetical Society '26.*
- Supervisor St. Patrick's Mission Center '26.*

W.C.



FRANCES STURGESS, A. B.  
VANDALIA, ILLINOIS

*St. Mary's College, Notre Dame, Indiana, '22, '23.*

*Normal, Normal, Illinois, Summer '23.*

*Illinois University, Summer '24.*

*Athletics '26.*

*Sodality '26.*

*Dramatics '26.*

*Basket-ball '26.*

WC

TO the Sisters of Loretto  
who are members of  
the Class of 1926 this page  
is lovingly dedicated.

## *History of the Class of 1926*



Seniors! And finally we have reached the glorious heights we have so valiantly kept before our eyes. Now as we look backward over the zigzag path we have worn up the steep mountain of knowledge we love to recall the memories dear to the School Girl's heart. It is easy to forget the shadows of disappointment and to remember, as we do now, only the joyous splashes of sunshine along the way.

The morning of the eighteenth of September, Nineteen Twenty-Two dawned bright and encouragingly on a group of thirty-four timid Freshies. How well we did succeed in getting under the haughty Senior's feet! One moment we were in awe of their Mighty Majesties and the next we were in love with them. Then Initiation! Who can forget the sensation of ice water trickling down the back as we rode the goat? We are not quite sure whom to pity most—the goat or the Freshies! However, after Initiation we seemed to breathe more normally, feel more collegiate, and we began to look forward to the first time we would be social hostesses in the College. Most carefully did we plan to carry out the Arabian effect characteristic of a Sheik party. Those were the days when the Sheik craze was at its height. A sawdust desert, a spotlight moon, an orchestra concealed behind the swaying palms, a very picturesque lion-head fountain from whose mouth sweet cider flowed, the hostesses disguised as manly Arabian princes, a wee bit of your imagination and you have the most original party Webster College can boast.

Then our first attendance at a college dance. The Fall Dance! Thrills and heart throbs. How those romantic threads did twine themselves in and out of our imaginations. Just one evening, but enough crowded into it to make conversation for weeks.

Social activities were not our sole interest in Webster. The poor "Den" did not look cozy enough to us so we started a drive, the proceeds of which were to buy decorations for our "rec" room. By the time Santa Claus was ready to come down the chimney the windows were colorful with bright cretonne drapes, the divans each had their covers and cushions, and merrily did the new "vic" sing to our proud hearts.

Christmas! To us its approach meant holidays, the school banquet, and a present from Santa Claus to each expectant Freshman. Meekly we stood before Santa to receive our gifts and hear the accompanying verse read, much to the enjoyment of the others, but to our own embarrassment. Thus the first half of the year rolled on and we hastened back from the Christmas vacation anticipating the first Prom to be given by Webster College. What a brilliant and impressing affair it was. Glad we were collegiates going to a college Prom? Well we should say so. The next thing of interest was the Shakespearian play, "As You Like It," given by the dramatic department. We were proud of that, too, and to know it was really worth the favorable comments received.



## HISTORY OF THE CLASS OF 1926—*Continued*

It did not take the hours long to trip light heartedly through the fresh months of Spring. June was soon here and we, the Freshmen, were greatly entranced by the graduation ceremonies and thrilled with anticipation of what the day three years hence would mean to us—Graduation. A Degree!

September, 1923, and we were once more within the beloved walls of Webster College. We were rather diminished in regard to quantity, but in quality we had increased enough to be termed, "Sophomores."

The Fall Dance given at the Gatesworth Hotel again headed our social calendar. Through the softly lighted lobby came happy Youth leaving gay wisps of laughter trailing after it, as the boys and girls went two by two into the ballroom. Jazz! Jazz! It drew us all for one night into its mad whirl. Such fleeting delight crammed into one night; yet so dear to our memories.

For a novelty we decided to have a hay ride, so we donned sport clothes and colorful bandanas, obtained a huge truck and sallied forth to Castlewood on the Meramec River. Such fun we had playing ukes, singing, and separating ourselves from the hay. The food brought forth in answer to the cries of "When do we eat?" never tasted better than it did to our sharpened appetites. And then romantic moonlight brought our hay ride to a glorious close.

Athletics seem to have been very popular with us about this time. Many of our class entered the Track Meet coming out with flying colors. But it was in Basketball that we excelled. The Freshmen-Sophomore game capped our record and now we proudly leave among Webster's trophies our silver loving cup as a memento of past prowess and future success.

As each year quietly slipped by Time appeared to be more fleet footed, for suddenly we found ourselves Juniors. The mists of the mountain-side were clearing and we could see peeking through it vistas of blue and gold.

Once more we were hostesses. We played Santa Claus and entertained the faculty and student body at the Christmas party. What a witty, jolly St. Nick came down the chimney at our bidding, bringing presents to our deserving faculty and eager Freshies. Nature aided us by sending a big ice storm. All the lights went out and we had an old-fashioned Christmas tree with flickering candles. Through the windows we beheld a crystal world, white and sparkling in the passing flashes of light. One could almost hear the distant melody of dancing sleigh bells.

After the party was over and the guests were on their way shadowy figures carrying candles caused the halls to throw back echoes of, "So long, see you next year."

Speaking of society debuts, Webster College made hers into the world of prestige on being accepted into the North Central Association.

Our highest dramatic achievement of the year was the presentation of Shakespeare's "Comedy of Errors." A comedy indeed with the accompanying gala of laugh-provoking repartee and clever stage settings.

WD

## HISTORY OF THE CLASS OF 1926—*Continued*

Heretofore Webster had given but two annual dances but this year another was added, the Spring Dance. A fitting way to greet the gayest season of all the year, the season of youth and frivolity.

With joy and pride singing in our hearts we returned to Webster's Halls as SENIORS. Now we could act haughtily and gaze with condescension upon the arriving Freshmen.

Among the many changes that greeted us on our arrival was the change in the faculty. Our dear Mother Edith had left us to take charge of the Loretto Convent of Highland Park, Ill. Her place was occupied by Mother Linus of Loretto Heights College, Loretto, Colorado. Sister Louise, formerly both Dean of Studies and Dean of Women, shared her duties with Sister Ann Francis, who is now our Dean of Women.

As Seniors our social, as well as scholastic and spiritual activities, have increased. The Juniors were the first to entertain us with a bridge-luncheon at the Missouri Athletic Club. This is merely a fore-shadowing of the various events that are to fill to overflowing the last few months that remain to us as collegiate members of Webster College.

We came to Webster in September confident that we would have but few hours to carry, but we reasoned without our Professors. The word "thesis" keeps flashing before our eyes until we dream of spending whole centuries in libraries pursuing elusive reference books. Then there is Doctor Donovan who, fearing we are not sufficiently occupied, delights in burdening us with questionnaires to be sent to every school in the country and the data received to be tabulated, and in sending us on Social Science trips to the most remote corners of St. Louis and the county.

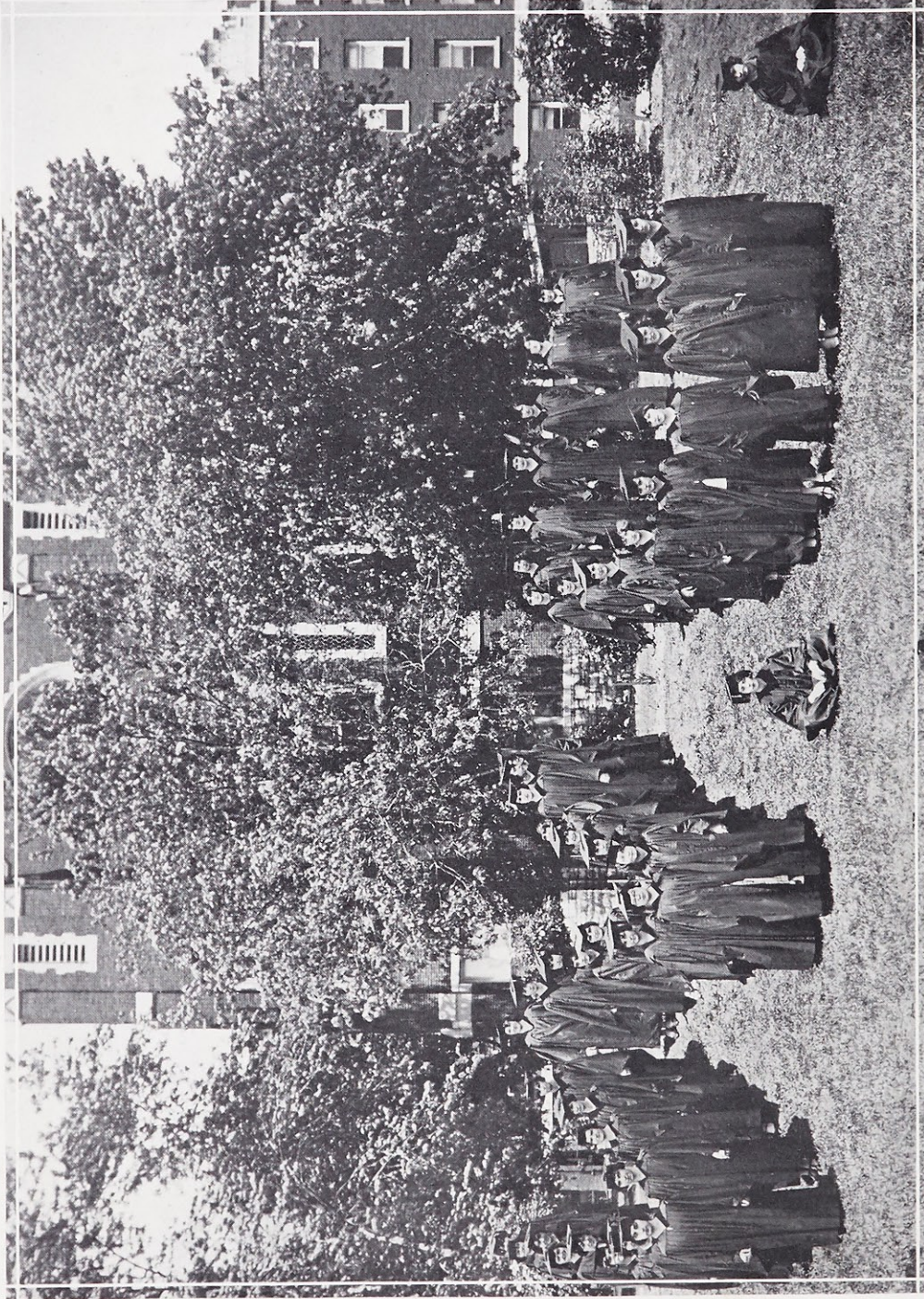
Webster students, being "all around girls," must take an active part in Mission interests, so "our group" has had to do its share in "making money," in teaching catechism and furthering the Eucharistic Endeavor. But during the retreat given by Reverend Daniel Lord, S. J., we touched the heights in spirituality. In his talks the Reverend Retreat Master prepared us for heaven via life, urging us to leadership bearing the standard of ideal Catholic Womanhood.

We are looking forward to the time when we shall live in and bring to you a bit of sunshine from the Land of Wit and Comedy through our class play, "The Rivals," by Richard Sheridan and the Shakespearian production, "The Taming of the Shrew."

June the first will bring for us graduation, degrees, hoods, flowers, and congratulations. We shall be happy and yet as with all perfect happiness there will be beneath it a note of sadness and reminiscence. Webster will open wide its portals for us and we shall go forth to conquer. Whatever achievements we may attain we shall not forget that it was our Alma Mater who taught us to look ever upward and forward.

ADELE BURKART

WC



STUDENT GROUP





MARY  
TANCRED  
Fort Smith, Ark.

THERESA  
SHEA  
St. Louis, Mo.

AGNES  
TUCHSCHMIDT  
St. Louis, Mo.

MARGARET  
PETERS  
Sterling, Ill.

MARY  
BURGET  
Delia, Kan.

CATHERINE  
CLARK  
St. Louis, Mo.





STELLA  
CURTIS  
Dallas, Tex.

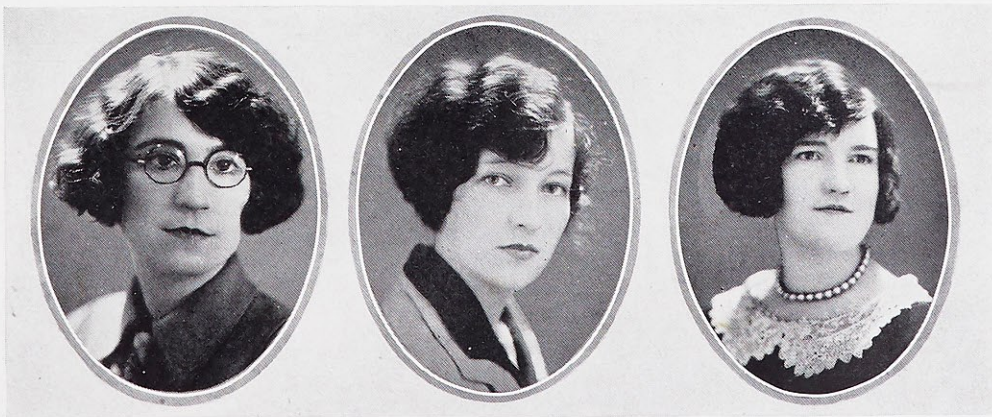
THEO  
FEHLIG  
St. Louis, Mo.

HELEN  
FCGG  
Hammend, Ind.

HELEN  
HADSELL  
Kansas City, Mo.

DOROTHY  
MONARCH  
Owensboro, Ky.

JEANNE  
MURPHY  
St. Louis, Mo.





PEGGY  
O'LEARY  
Moberly, Mo.

MARIE  
POWERS  
St. Louis, Mo.

MARGARET  
REDDIN  
Denver, Colo.

SYLVIA  
SANDERS  
St. Louis, Mo.

MARIE  
SHEA  
St. Louis, Mo.

ROSALIE  
SIEFERT  
Webster Groves, Mo.





HELEN  
SIMON

St. Louis, Mo.

VIRGINIA  
STEPHENS

St. Louis, Mo.

VIRGINIA  
WALSH

Hickman Mills, Mo.

ANNA DONOVAN

ROSE BINDEWALD

ERVILLA HIX

DOROTHY VENEWITZ

ANNA MARIE BURKE

ELIZABETH TENNER





SOPHIE



LUCILLE ROOF  
Paducah,  
Ky.

Laura Archer  
Vicksburg,  
Miss.



CELESTE BLOCK  
Webster Groves,  
Mo.

HARRIET AVERILL  
St. Louis,  
Mo.



AGNES GRIFFIN  
Carroll,  
Ia.

MARGUERITE BARTHEL  
St. Louis,  
Mo.



HELEN MCGUIRE  
Sterling,  
Ill.

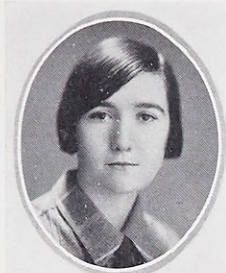
PEARL BRODERICK  
Sterling,  
Ill.



JUANITA ABELL  
Erie,  
Kan.

MARTA BROWN  
Fort Madison,  
Ia.





ANNE CARR  
Webster Groves,  
Mo.

PEARL FARRELL  
Ponca City,  
Okla.



MARY COOKE  
St. Louis,  
Mo.

GRETCHEN FEGERS  
Keokuk,  
Ia.



ELIZABETH CORRIGAN  
Poplar Bluff,  
Mo.

THELMA GESELL  
St. Louis,  
Mo.



THELMA COYNE  
East St. Louis,  
Ill.

EDITH GLOSEMEYER  
O'Fallon,  
Mo.



ELLEN DUGGAN  
St. Louis,  
Mo.

HELEN MAE HEISSERER  
Benton,  
Mo.





KATHRYN HUMMERT  
Breese,  
Ill.

LORETTO MALONEY  
St. Louis,  
Mo.



MAUDE JOKERST  
St. Louis,  
Mo.

HELEN MCANULTY  
Webster Groves,  
Mo.



FRANCES KOHL  
Belleville,  
Ill.

ANNA MARIE McDERMOTT  
St. Louis,  
Mo.



KATHERINE KRAMER  
St. Louis,  
Mo.

MARGARET MARY PARKER  
St. Louis,  
Mo.



MARGARET LEONARD  
Webster Groves,  
Mo.

MARIE SCHEER  
St. Louis,  
Mo.





ROSAMOND SMITH  
St. Louis.  
Mo.

JEANETTE STIRITZ  
Alton,  
Ill.



FLORENCE PITT SMITH  
Fort Worth,  
Texas

HELEN STUCKSTEDE  
St. Louis,  
Mo.



BEATRICE STACK  
Keokuk,  
Ia.

MARGARET WEGMAN  
St. Louis,  
Mo.



ELLEN CASEY  
Webster Groves,  
Mo.

LILLIAN WOLTERING  
St. Louis,  
Mo.



ANNIE RUTH MILLIGAN  
OLIVE PFEFFER  
DOROTHY ANN MCBRIDE  
HELEN BRINTON  
GENE CORCORAN  
ELIZABETH DAUWALTER  
DOROTHY DONOGHUE

ROSEMARY DERBY  
VIRGINIA MCCLUNG  
RUTH HUKENBECH  
HELEN HECKENKAMP  
HELEN KARCHER  
HELEN KESHNER  
JANE LEDWIDGE







*Freshman Class*

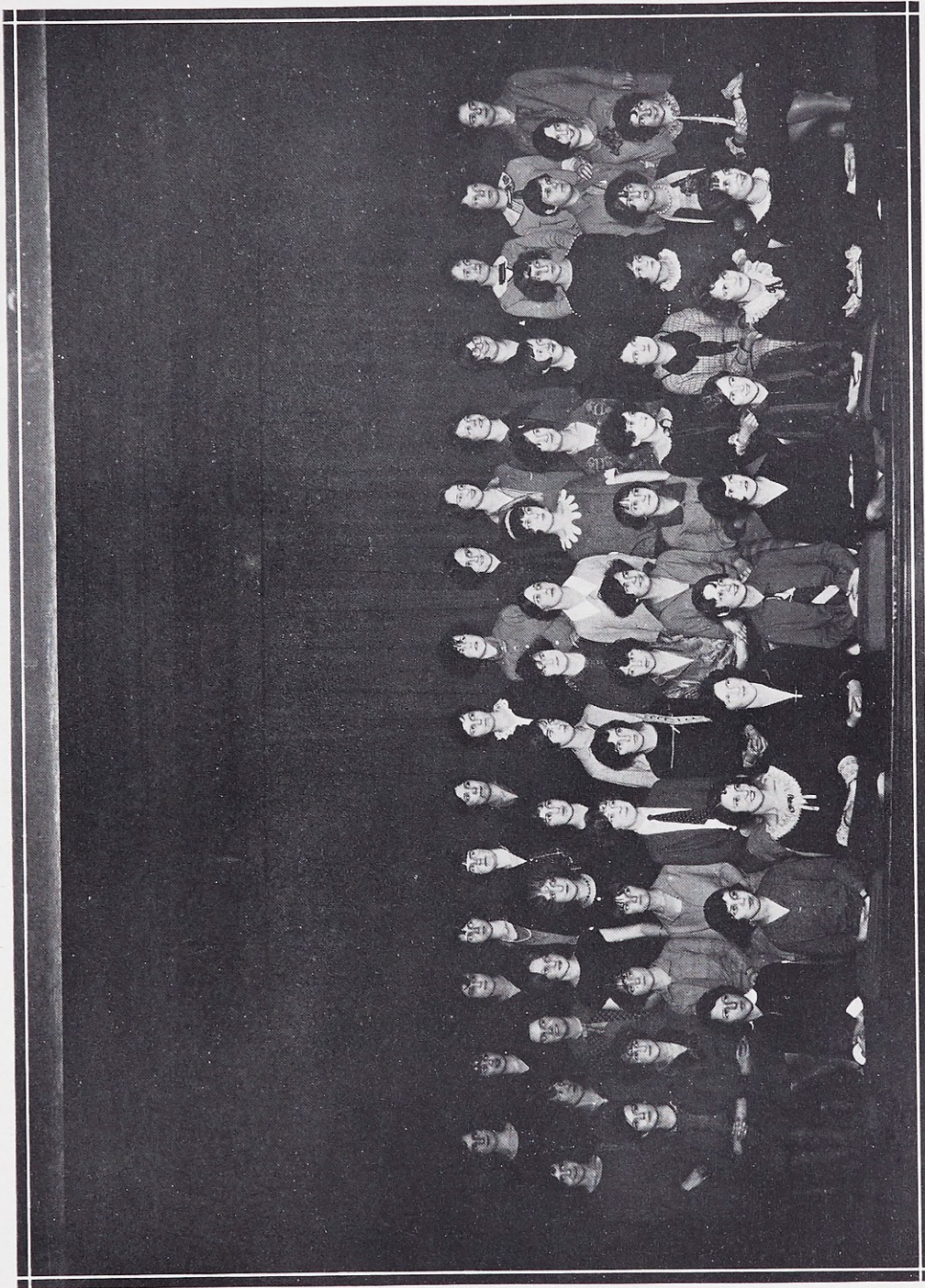
<i>President</i> . . . . .	MARY HABERL
<i>Vice-President</i> . . . . .	MARGARET McMEEL
<i>Secretary</i> . . . . .	CATHERINE HAZEL
<i>Treasurer</i> . . . . .	DIXIE FISK

BERNADINE ALGERMISSEN  
 RITA ANDERSON  
 GERTRUDE BERGEN  
 MARGARET MARY BREY  
 WILHELMINA BERDON  
 ADELE BOLLWEG  
 ELIZABETH BENTON  
 ELENOR BROEKER  
 EMMA CHANDLER  
 MARIE CREGAN  
 LILLIAN CASE  
 ANNA CANNON  
 HELEN CANNON  
 MARY ELIZABETH DOODY  
 ADELE DANIEL  
 FRANCES DOHERTY  
 ELIZABETH EARLY  
 HELEN EAVES  
 DIXIE FISK

DOLORES GILLEN  
 RUTH GRANT  
 MARIAN HILLP  
 MARY HABERL  
 MARGUERITE HEYWOOD  
 CATHERINE HAZEL  
 LOUISE HAYES  
 MARY JOHNSON  
 GERTRUDE JOLLEY  
 GERTRUDE KRUSE  
 MARIAN LANE  
 CORINNE LEIGH  
 IDA CATHERINE McDERMOTT  
 MARGARET McMEEL  
 ETHEL McCUE  
 MARY McDONOUGH  
 MARGARET MONARCH  
 JULIA MACHALONIS  
 JENETTE MARXER

BLANCHE MARSHALL  
 ROSE MALLON  
 DORIS NAFF  
 AGNES O'CONNOR  
 ROSEMARY O'REILLY  
 DOROTHY OSTENBERG  
 MARIE REYNOLDS  
 MARGARET ROESCH  
 MARIE RUTH RICE  
 ANNA RAFFERTY  
 SOPHIA RODRIGUEX  
 ELLEN MAY RYAN  
 MARGARET RAMSAY  
 CATHERINE ROHAN  
 BEATRICE SCHULTE  
 ELIZABETH SWIFT  
 MARIE TODD  
 HELEN TIERNEY  
 GRACE WALSH

W.C.



THE FRESHMEN GROUP

W.D.



FRESHMEN SNAPS

# ARTS





### *Loretto Conservatory of Music*

One of the most efficient units of Webster College is the Conservatory of Music. Aside from the convenience afforded to music loving students in the way of easily accessible, competent musical instruction, an immense amount of good, both to the College and to the Conservatory is to be derived from close interrelations between the two institutions.

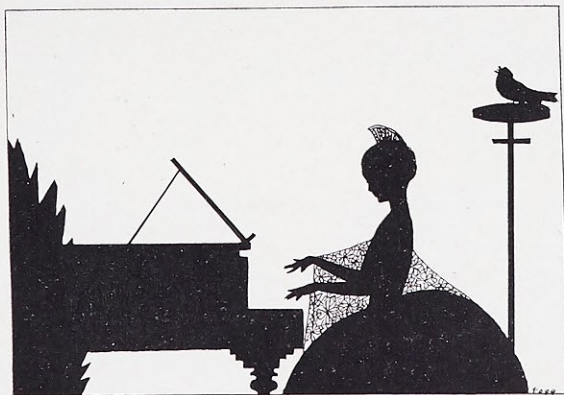
The College is benefited by this connection. Time is no more when suave piano-playing was one of the social accomplishments of the convent-trained girl. Parlor walls have long ceased to echo the sighs of the Maiden's Prayer or the rippling arpeggios of the Beautiful Blue Banube. Modern standards of amateur, nay, girls', performances demand a reasonably thorough control of technic and intelligent interpretation. Music for girls has thus become the art that music should ever be, and as such, a means of self-development and self-expression second to none. It is in this capacity that the Conservatory serves the College. The form of training which it provides is most valuable, since it deals with faculties that no other department touches.

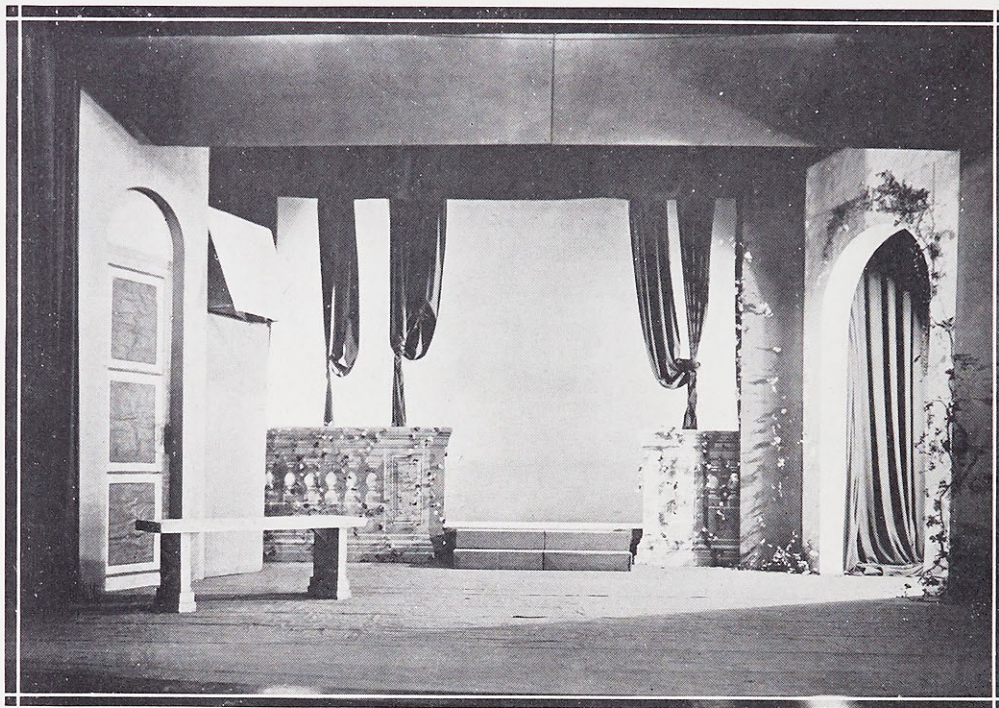
The good which comes to the Conservatory through its collegiate association is manifest. If musical training is an important branch of education, education is still more necessary to musical efficiency. Without music, education is incomplete. Without education, music is impossible. This is the great plea for co-existence of College and Conservatory, the tremendous artistic advantage that

LORETTO CONSERVATORY OF MUSIC—*Continued*

such an institution as the Loretto Conservatory holds over more specialized, independent music schools. If music is a means of self-expression, there must be something to express. Hence the need for solid general culture such as only college can afford the musician.

The Conservatory is incorporated under the State Laws of Missouri to issue degrees, diplomas, teacher's certificates in music. The curriculum includes courses in piano, voice, violin, pipe-organ, theory, harmony, ear-training, history and appreciation, analysis, counterpoint, sight singing and ensemble, and at the completion of the Collegiate Course the degree of Bachelor of Music is awarded. Students of the Bachelor of Arts Course who are sufficiently advanced to do Post Graduate work in piano creditably, may receive the Special Conservatory Diploma at the close of the senior year. Both these courses and those of general culture are further enriched by the rare opportunities offered students to hear the world's great masters in opera and concert during the winter months in Saint Louis, such as Paderewski, Rachmaninoff, Hoffman, Schmitz, Ganz, Spaulding, and to attend the Symphony Concerts.





STAGE SETTING FROM "COMEDY OF ERRORS"

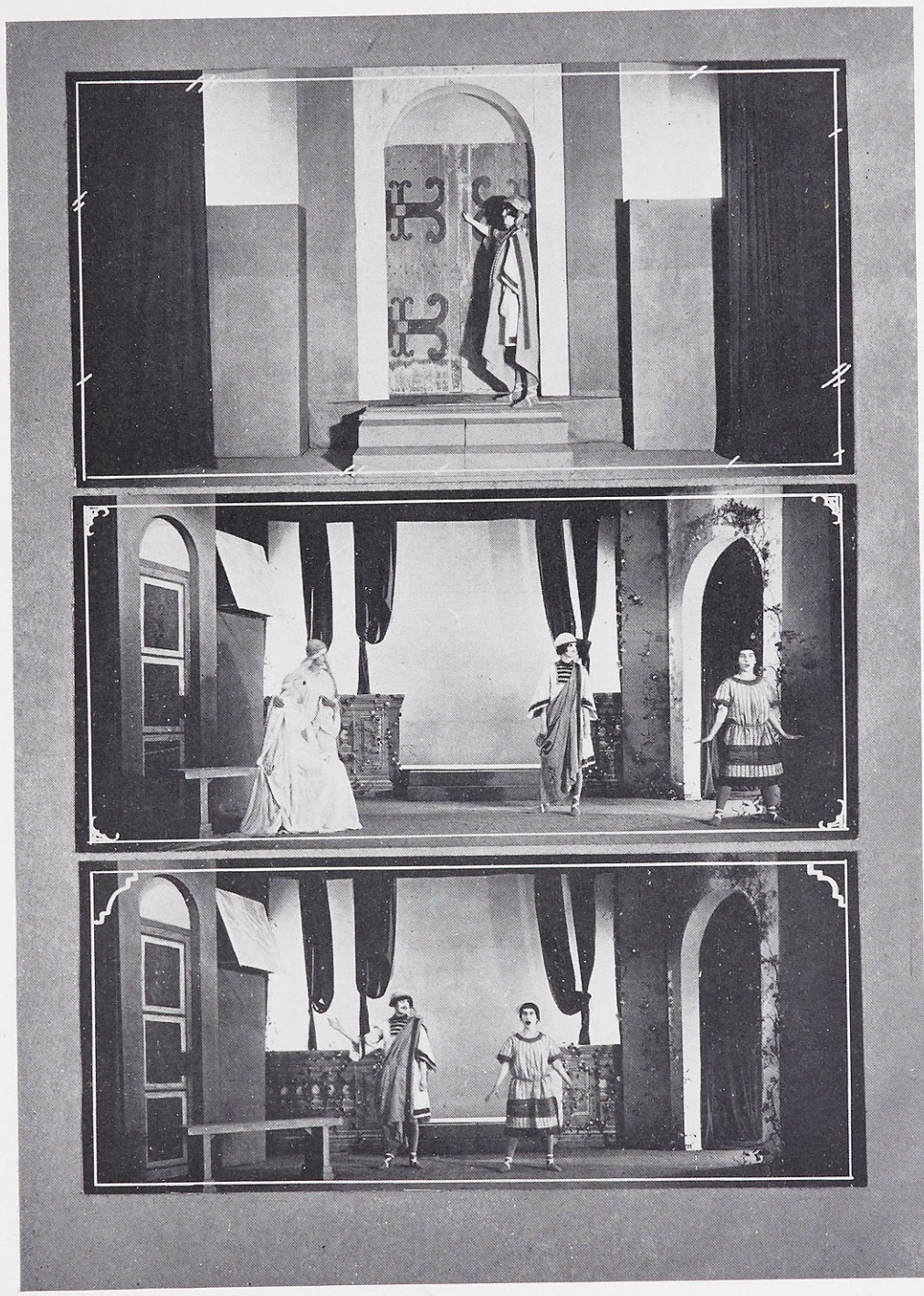
## *Dramatics*

The Dramatic Department has ever been a very important one of the Webster curriculum. The work is a source of constant enjoyment to the students enrolled in the course, and indeed to some of them college life without it would seem rather drab and colorless. Aside from the pleasures, however, many advantages are to be obtained from the study of dramatic art. No one who is familiar with educational work can deny this. To the individual it gives poise, power of expression, and the ability to strengthen her personality. For the school it possesses added social and educative values. It brings the girls together and makes for better school spirit. It rests and freshens the mind, fortifying it for more difficult tasks. Here the student forgets school worries, while her imagination takes flight, and she plays for a time in make-believe land. Well equipped is the school which possesses this course—still better equipped is the school which possesses such a course as does Webster College.

Webster can indeed be proud of its dramatic work. Its Little Theatre is the equal of the best in the Middle West. The equipment is of the very finest and latest. The lighting system by means of which are procured many beautiful and picturesque results is most effective. A cyclorama of Maxfield Parrish blue forms the background for most of the stage settings, while the soft green drapes with which the stage is hung complete the picture.

Mrs. Anna McClain Sankey is in charge of this department. Her ability and ardor have made the course the popular one it is today. The Dramatic Art Department of Webster College which opened with a mere handful of interested and enthusiastic girls has grown steadily until now the class is suf-

W.C.



SCENES FROM "COMEDY OF ERRORS"

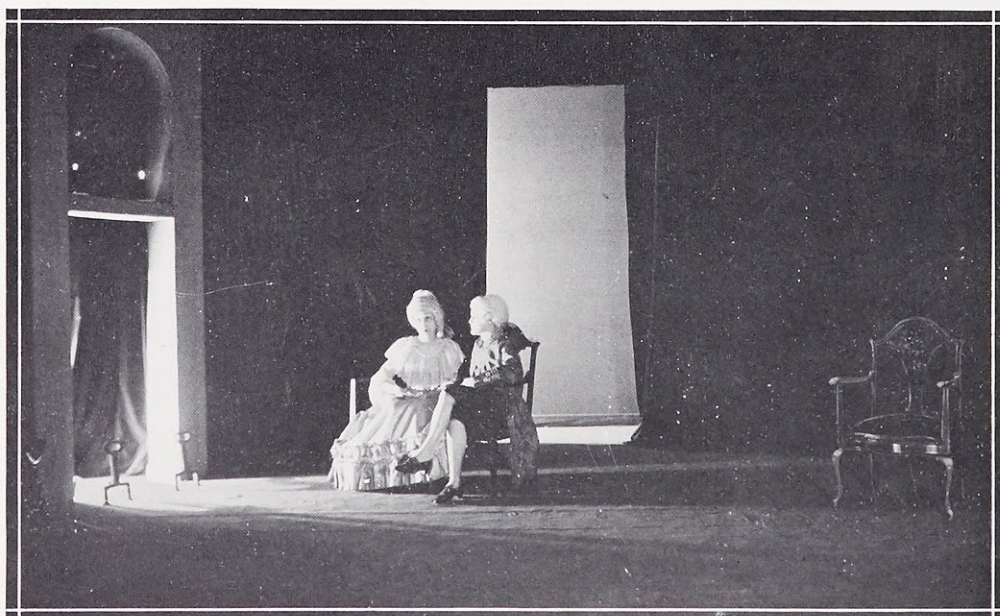
DRAMATICS—Continued

ficiently large to give two complete and entirely different casts of the "Taming of the Shrew." Oh, yes! we attempt Shakespeare and with some success. Mrs. Sankey has not only inspired her girls with high ambitions but has helped them with her untiring zeal and patience to realize these ambitions. That they have succeeded, at least partly, is clearly shown by the favorable comments made in the past upon their work.

Work throughout the year is widely different, for plays graduating from the simple to more complex prepare the class for THE play, a Shakespearean drama given in the spring. Each student merits a part in Shakespeare according to the ability she has shown in her previous work. This year, besides the presentation of the "Taming of the Shrew," that of the "Rivals" is to be a feature of commencement week. The seniors, not to be outdone by other followers of Sheridan, decided to celebrate the sesquicentennial year of the first production of the "Rivals" by choosing this comedy for the class play.

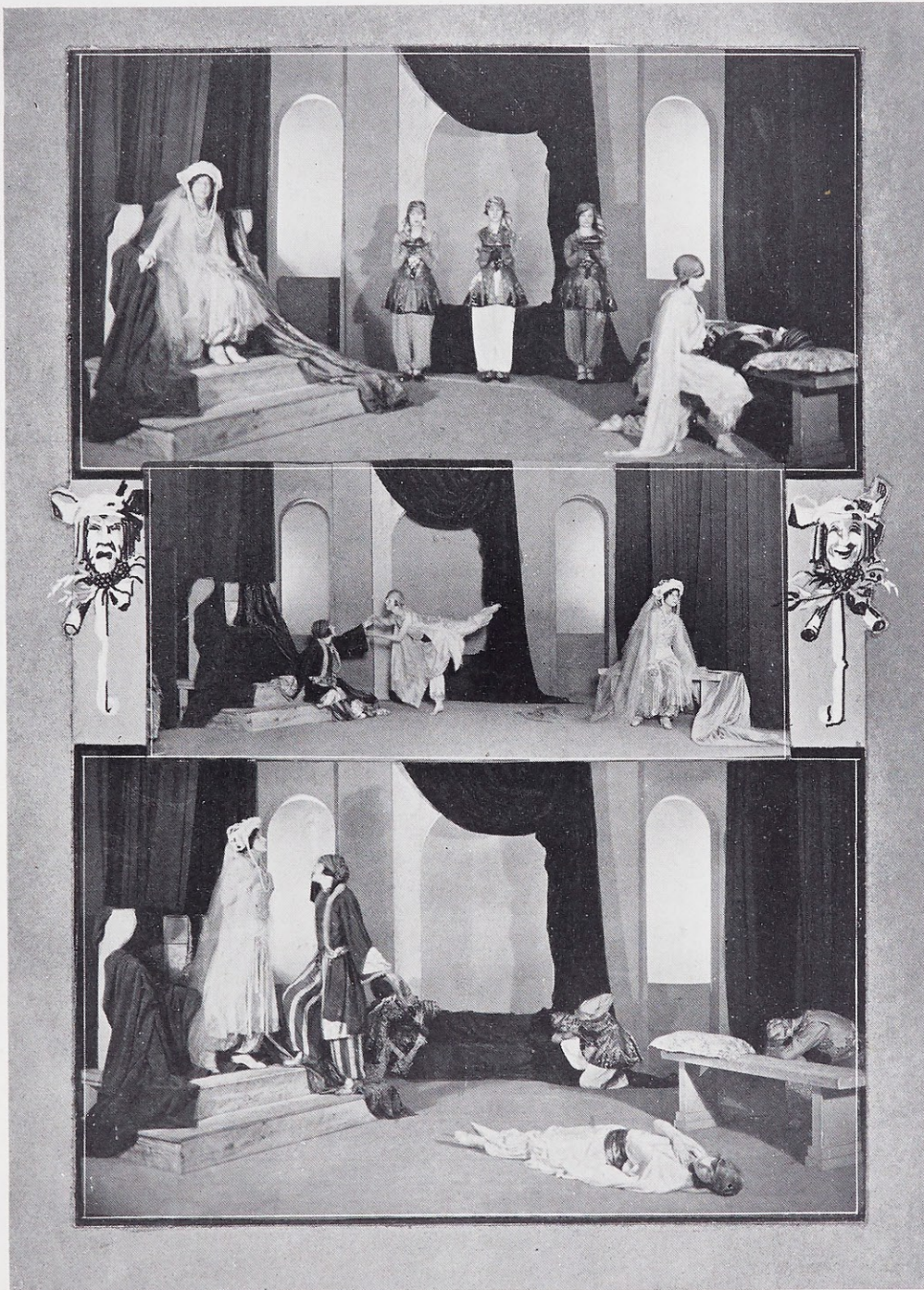
Presenting plays, however, is not the only work of Webster's Dramatic Department. A course in the teaching of expression is also included. At the completion of this course the student receives a teacher's diploma in expression and stands ready to answer the ever increasing call for competent teachers in this profession. For the "Little Theatre Movement" has spread over the entire Middle West—and schools which heretofore have had no Dramatic Art Department are introducing one. Graduates of Webster have stepped into some of these schools and taken charge successfully of the new department.

Such satisfaction arising from this success is due to the Alma Mater, who has foreseen the advantages a course in dramatic art would give her girls and who has done her best to establish and maintain a well-equipped Dramatic Art Department.



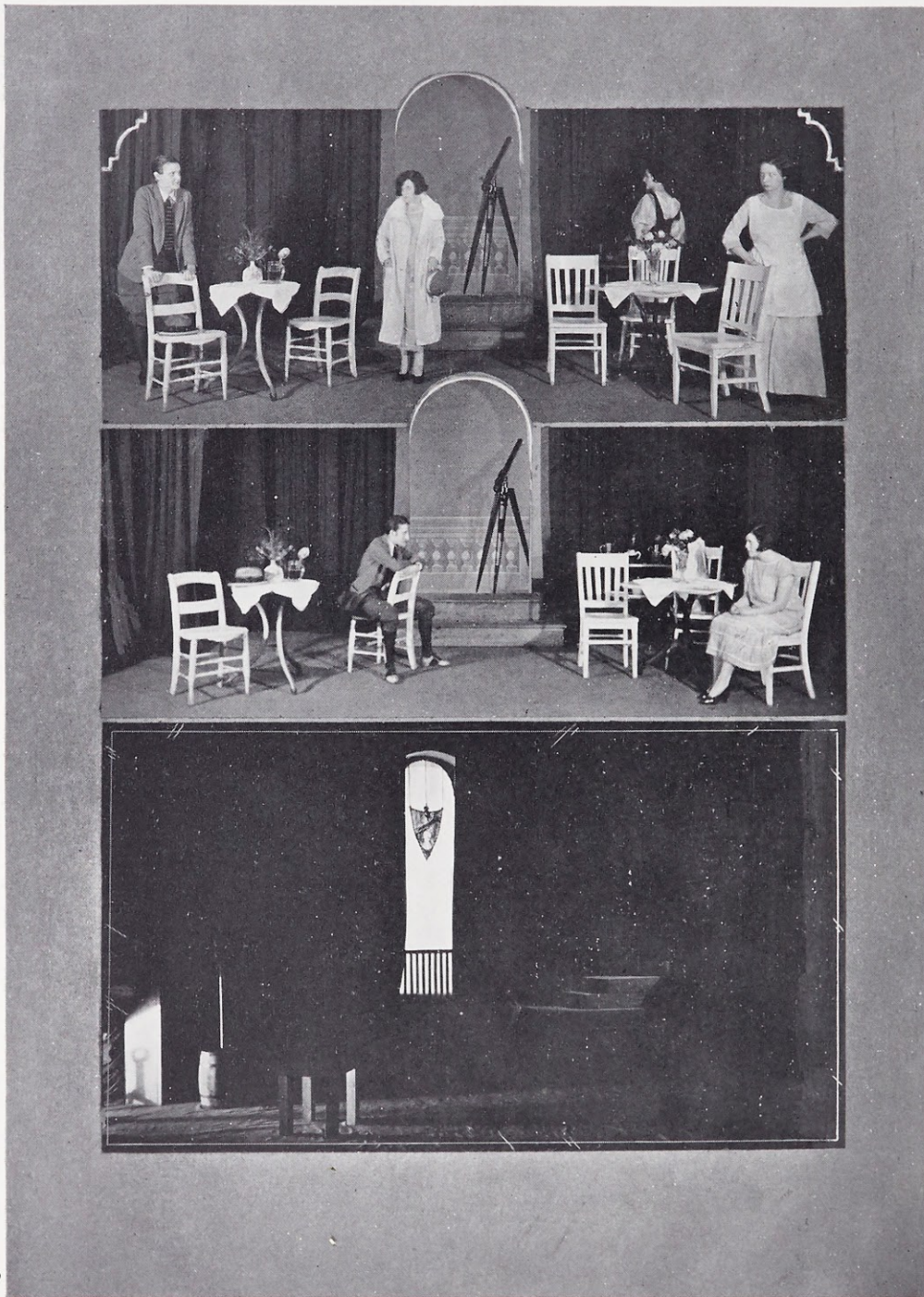
SCENE FROM "A FAN AND TWO CANDLESTICKS"

WC

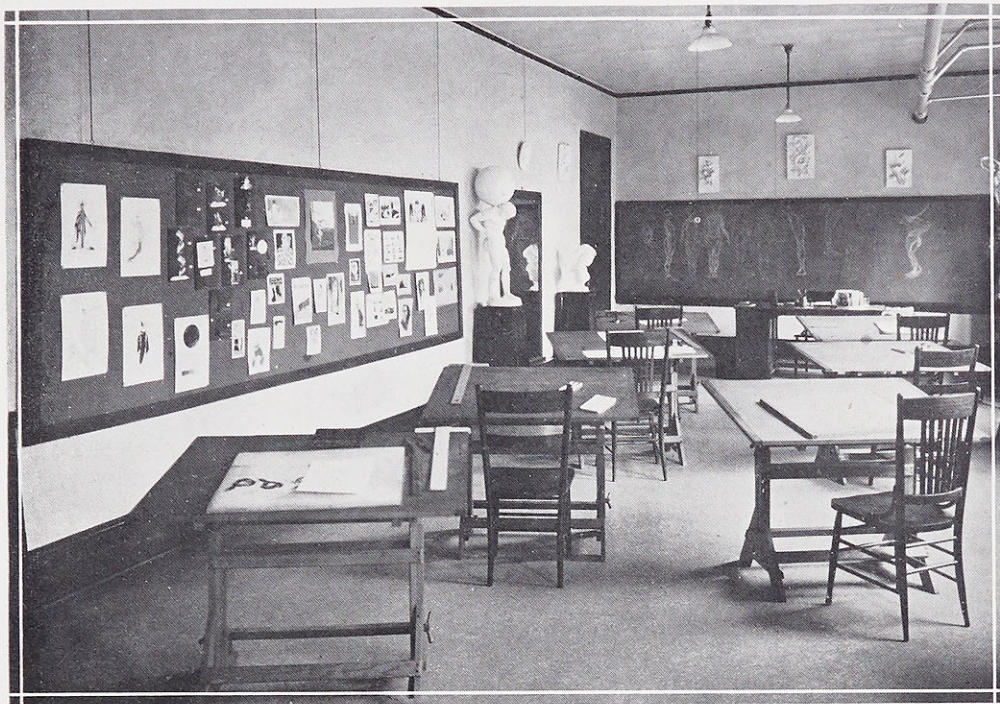


SCENES FROM "OLD ROMANCE"

WC



A STAGE SETTING AND SCENES FROM "FAR AWAY PRINCESS"



## *Commercial Art*

Commercial Art, as every form of art, has passed through an evolution and has emerged refined and polished—a finished product of artistic embellishment and in consequence a thing of beauty.

Every artist strives to beautify life, as he sees it idealized. The Commercial Artist beautifies, but at the same time his art is of a realistic nature, and consequently his trade becomes a disguise, under the name of art. This, however, does not imply that art suffers as a consequence, for on the contrary, simplicity and naturalness have added to its charm.

There is a vast amount of self-expression displayed in this field; it instills in the artistic temperament the ability to create what a purely inventive genius would waste on mediocre painting or architecture. The advantages of commercial art to the modern girl or boy are best exemplified in comparing the advertisements of twenty-five years ago with those of to-day. Then book and magazine illustrators looked down upon the Commercial designer and advertisements made no pretense to disguise a trade by the slightest suggestion of beauty. Hence, "Necessities of yesterday are but junk of to-day."

To-day, Advertisers, Manufacturers, Editors and Merchants are crying aloud for new ideas in the field of commercial enterprise. Posters, which of late have become very prominent in displaying and exhibiting every form of enterprise, have in many cases reached the pinnacle of a fine art. During the war they

COMMERCIAL ART—*Continued*

served to a remarkable purpose; their appeal gripping the heart and bringing to the people what weeks of newspaper reading could never have accomplished.

The Chinese maxim, "One picture will tell more than 10,000 words," is indeed true.

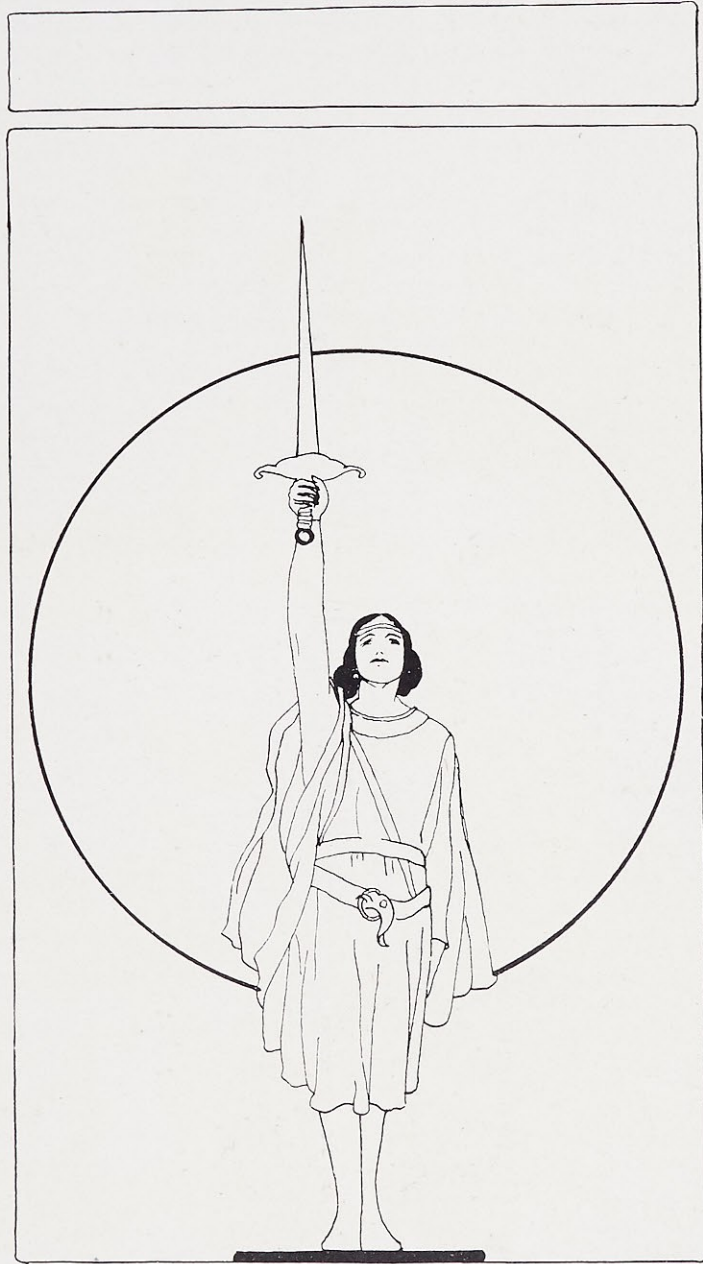
As in the study of fine arts, Commercial Art implies the thorough knowledge of color, tone-value, form and composition. Imagination has full play, but there must be a well-grounded technique. Harmony, rhythm, and proportion are most essential though originality takes precedence over every-else. Coles Philips has given us striking new ideas in this field of self-expression.

This is an age of originality; it is an age of pictures; it is also an age of hurry. People like to take in at a glance everything they can. In ancient times, the first writers found that the most effective way of expressing themselves was by hieroglyphics, and the modern world of to-day seems to have adopted this same idea.

In the past decade Commercial Art has broadened and developed to a remarkable extent. Besides the ever-increasing number of Art schools throughout the country, large colleges such as Webster are establishing well-equipped departments and training teachers for this fascinating and important study.

The courses given at Webster College include Illustration, Poster Design, Interior Decoration and Costume Design, all of which prepare the student for professional work along these lines. The students put their knowledge to practical use by co-operation with the Dramatic Art department and Mission Unit.





ORGANIZATIONS



## Sodality

### OFFICERS

<i>Prefect</i> . . . . .	LUCINDA CLEMENTS
<i>Assistant Prefect</i> . . . . .	LOUISE MURPHY
<i>Secretary</i> . . . . .	HEDWIG STOCKER
<i>Assistant Secretary</i> . . . . .	MARY TANCRED
<i>Treasurer</i> . . . . .	THERESA SHEA
<i>Assistant Treasurer</i> . . . . .	PEARL BRODERICK

### CLASS REPRESENTATIVES

<i>Senior</i> . . . . .	GENEVIEVE BARTHEL
<i>Junior</i> . . . . .	VIRGINIA WALSH
<i>Sophomore</i> . . . . .	ANNE CARR
<i>Freshman</i> . . . . .	MARY HABERL

## *Sodality*

What organization touches the whole life of the Catholic student from primary grade to College more than the Sodality of the Blessed Mother of God?

The Webster girls realizing this, have since the opening of the College been devoted clients of our Lady and have exerted their greatest efforts to make the College Sodality the outstanding society of the school. The second Wednesday of every month is set aside for Sodality Communion Day. The students in cap and gown attend Mass in the chapel and receive Holy Communion. Every week they meet for the recitation of the Little Office or a short instructive talk followed by Benediction.

The Sodality devotes itself to various activities, the chief among them being co-operation with the Mission Crusade. The College halls ring with Mission Spirit. Stirred by the desire to assist the little band of Loretines in China the students work with vim. To secure results suited to their enthusiasm, they have adopted an entirely new plan. The school as a whole has been divided into groups eleven in number each bearing a chosen name, each working as a distinct unit. The names have been selected from vastly different fields, some groups choosing the name of the early Missionaries, others honoring the zealous ones of the present, such as Bishop Beckman and Reverend Thill of the C. S. M. C., still others have soared as high as the angelic choirs to find their appellations.

The students have a Mission Communion each month, similar to the day devoted to the Sodality of the Blessed Virgin Mary. At noon of that day a general meeting is held at which the officers and leaders report what has been done and suggest plans for the following month. In the evening there is given a Mission Play or Lecture. Many prayers and good works are offered daily for the success of the Mission Endeavor. Each student tries to keep before her the great motto in this conquest "Sacred Heart for the World and the World for the Sacred Heart."



### Athletic Association

President . . . . . GENEVIEVE BARTHEL  
 Vice-President . . . . . MARY ELIZABETH NEWELL  
 Secretary . . . . . HELEN FOGG  
 Treasurer . . . . . MARGARET PETERS

GENEVIEVE BARTHEL  
 MARTHA BRADFISH  
 ADELE BURKART  
 LUCINDA CLEMENTS  
 MARGARET MOWERY  
 LOUISE MURPHY  
 MARY ELIZABETH NEWELL  
 NAN SHALLCROSS  
 HEDWIG STOCKER  
 FRANCES STURGESS  
 MARY BURGET  
 CATHERINE CLARK  
 STELLA CURTIS  
 THEO FEHLIG  
 HELEN FOGG  
 HELEN HADSELL  
 DOROTHY MONARCH  
 JEANNE MURPHY  
 PEGGY O'LEARY  
 MARGARET PETERS  
 MARIE POWERS  
 MARGARET REDDIN  
 THERESA SHEA  
 ROSALIE SIEFERT  
 HELEN SIMON  
 VIRGINIA STEPHENS  
 MARY TANCRED  
 AGNES TUCHSCHMIDT  
 VIRGINIA WALSH  
 JUANITA ABELL  
 HARRIETT AVERILL  
 LAURA ARCHER  
 MARGUERITE BARTHEL  
 PEARL BRODERICK  
 MARTA BROWN  
 CELESTE BLOCK  
 ANNE CARR

ELLEN CASEY  
 MARY COOKE  
 ELIZABETH CORRIGAN  
 THELMA COYNE  
 ELLEN DUGGAN  
 PEARL FARRELL  
 GRETCHEN FEGERS  
 THELMA GESELL  
 EDITH GLOSEMEYER  
 AGNES GRIFFIN  
 HELEN MAE HEISSERER  
 KATHRYN HUMMERT  
 MAUDE JOKERST  
 FRANCES KOHL  
 MARGARET LEONARD  
 HELEN MCANULTY  
 ANNA MARIE MCDERMOTT  
 HELEN MCGUIRE  
 LORETTO MALONEY  
 MARGARET MARY PARKER  
 LUCILLE ROOF  
 FLORENCE PITT SMITH  
 ROSAMOND SMITH  
 BEATRICE STACK  
 JEANETTE STIRITZ  
 HELEN STUCKSTEDT  
 MARGARET WEGMANN  
 BERNADINE ALGERMISSEN  
 RITA ANDERSON  
 GERTRUDE BERGEN  
 MARGARET MARY BREY  
 WILHELMINA BERDON  
 EMMA CHANDLER  
 MARIE CREGAN  
 LILLIAN CASE  
 ANNA CANNON

ELIZABETH DOODY  
 ADELE DANIEL  
 ELIZABETH EARLY  
 HELEN EAVES  
 DIXIE FISK  
 DOLORES GILLEN  
 RUTH GRANT  
 MARY HABERL  
 CATHERINE HAZEL  
 LOUISE HAYES  
 MARY JOHNSON  
 GERTRUDE JOLLEY  
 MARIAN LANE  
 GERTRUDE KRUSE  
 IDA CATHERINE MCDERMOTT  
 MARGARET MCMEEL  
 MARY MCDONOUGH  
 MARGARET MONARCH  
 JEANETTE MARXER  
 BLANCHE MARSHALL  
 ROSE MALLON  
 DORIS NAFF  
 AGNES O'CONNOR  
 ROSEMARY O'REILLY  
 DOROTHY OSTENBERG  
 MARIE REYNOLDS  
 MARGARET ROESCH  
 MARIE RICE  
 ANNA RAFFERTY  
 SOPHIA RODRIGUEX  
 ELLEN MAY RYAN  
 MARGARET RAMSAY  
 CATHERINE ROHAN  
 BEATRICE SCHULTE  
 BETTY SWIFT  
 MARIE TODD  
 GRACE WALSH

W.C.



## Alumnae Association

ORGANIZED IN 1923

### OFFICERS

<i>President</i> . . . . .	MRS. JOSEPH WEILER, A. M.
<i>Vice-President</i> . . . . .	MRS. JOHN HALLORAN, A. B.
<i>Secretary</i> . . . . .	MRS. H. BURNHAM TINKER, LITT. B.
<i>Recording Secretary</i> . . . . .	SISTER ANNE FRANCIS McARDLE, A. M.
<i>Treasurer</i> . . . . .	MRS. NORMAN GEORGE, A. B.

### EXECUTIVE COMMITTEE

- MRS. MILTON MEYER, B. S., CHAIRMAN
- MRS. VINCENT JONES, LITT. B.
- MISS MARCELLE PREVOST, A. B.
- MISS KATHRYNE SKARRY, A. B.
- MRS. MARION FLAIZ PETERSON, A. B.



# Alumnae

WHO	WHERE	WHAT
1919		
FLORENCE WADDOCK, A. B.	St. Louis	Teaching
1921		
ERNESTINE ZAVISCH, A. B.	El Paso	Teaching
CATHERINE O'REILLY, A. B.	St. Louis	Teaching
JESSE HURLEY, B. S.	St. Charles, Mo.	Mrs. Milton Meyer
LEONE GARVEY, A. B.	Los Angeles, Calif.	Library Work
RUTH MARY LOFTUS, A. B.	St. Louis	Mrs. J. C. Weiler
1922		
WINNIE HURLEY, LITT. B.	Kansas City, Mo.	Office Work
FRANCES PROBST, A. B.	St. Louis	Mrs. John Halloran
ELIZABETH HENNESSY, LITT. B.	St. Louis	Mrs. V. L. Jones
MADELINE MCSHANE, A. B.	Fort Smith, Ark.	Mrs. Max Lukinbill
1923		
MARCELLE PREVOST, A. B., Diplome de Professeur de Francais a l'Etranger, U. of Paris	Webster Groves, Mo.	Teaching
EMILY BARNICLE, LITT. B.	St. Louis	Mrs. H. B. Tinker
THELMA BARNICLE, A. B.	St. Louis	Business
CATHERINE HAENNI, A. B.	Dallas, Texas	Home
MARIE HAENNI, A. B.	Dallas, Texas	Home
NORINE BUCKLEY, A. B.	Biloxi, Miss.	Teaching
HORTENSE MOORE, A. B.	Chicago, Ill.	Mrs. John McManus
MARY BURKS, A. B.	Chicago, Ill.	Mrs. Patrick Mullaly
ANNA MAE BARRY, A. B.	St. Louis	Mrs. Norman George
MARGARET O'MARA, A. B.	St. Charles, Mo.	Mrs. Mark Anderson
ROSALIA FEHLIG, A. B.	St. Louis	Teaching
1924		
CATHERINE BARTHEL, A. B.	St. Louis	Office Work
EVARISTA COTTER, LITT. B.	Chicago, Ill.	Teaching
ALVERA FEHLIG, A. B.	St. Louis	Home
MARY REDDIN, A. B.	Loretto, Ky.	Sr. Mary Cecille
KATHRYNE SKARRY, A. B.	St. Louis	Teaching
GERTRUDE WAHRER, B. S.	Fort Madison, Ia.	Teaching
MARGARET WALSH, MUS. B.	Needles, Calif.	Mrs. Victor W. Johnson
1925		
VIOLET BARNICLE, LITT. B.	St. Louis	Social Work
MARY LOUISE BULTE, A. B.	St. Louis	Municipal Opera
GRACE CANTWELL, A. B.	Loretto, Ky.	Novitiate
ANNE DE LAY, LITT. B.	Kansas City, Mo.	Home
LILLIAN DONOVAN, A. B.	New York	Teaching
MARIE HANLON, A. B.	Webster Groves, Mo.	Office Work
HELEN HEALY, A. B.	St. Louis	Home
LUCIENNE IBERGER, LITT. B.	Marseilles, France	Office Work
ANNA MARIE JENNINGS, A. B.	Maplewood, Mo.	Newspaper Work
ESTHER MOORE, A. B.	Greeley, Neb.	Office Work
GLADYS O'CONNOR, A. B.	Cheyenne, Wyo.	Teaching
LILLIAN O'CONNOR, A. B.	Edina, Mo.	Office Work
ROSEMARY O'CONNOR, A. B.	Webster Groves, Mo.	Home
MARION FLAIZ PETERSON, A. B.	St. Louis	Mrs. Fenton Peterson
MARGARET TIERNON, MUS. B.	St. Louis	Home

## DEPARTMENT OF EXPRESSION

1922		
JEANETTE HENSGEN	Normandy, Mo.	Mrs. H. Surkamp
MARIE LOUISE BULTE	St. Louis	Municipal Opera
ROSALIA FEHLIG	St. Louis	Teaching
1923		
ANNA MAE BARRY	St. Louis	Mrs. Norman George

## DEPARTMENT OF MUSIC

1923		
MARY BURKS, MUS. B.	Chicago, Ill.	Mrs. Patrick Mullaly
MARY REDDIN, MUS. B.	Loretto, Ky.	Sr. Mary Cecille
1925		
GRACE CANTWELL, MUS. B.	Loretto, Ky.	Novitiate
LILLIAN O'CONNOR, MUS. B.	Edina, Mo.	Office Work

## ASSOCIATE MEMBERS

JANET OWINGS (Ex.-21)	St. Louis	Mrs. E. Britton
MARY ANN ANDERSON (Ex.-23)	St. Charles, Mo.	Home
RUTH WEILER (Ex.-24)	St. Louis	Teaching
THEO. MONTI (Ex.-24)	St. Louis	Mrs. Anthony O'Mara

## HONORARY MEMBERS

MRS. DANIEL DILLON	Washington, D. C.	
MRS. IGNATIUS MCMENAMY	St. Louis	
MRS. GEORGE MCNULTY	St. Louis	
MISS MAY LINDSAY	St. Louis	Pres. Loretto Alumnae

The Loretine Staff



AGNES GRIFFIN  
Exchanges



THEODORA FEHLIG  
Near and Far



MARGARET PETERS  
Just Among Ourselves



MARGARET MOWREY  
Editor-in-Chief



AGNES TUCHSCHMIDT  
Advertising Mgr.



MARTHA BRADFISH  
Circulation Mgr.



MARIE E. SHEA  
Art Editor

The Lauretanium Staff

ADELE BURKHART  
Business Mgr.

MARY E. NEWELL  
Advertising Mgr.

GENEVIEVE BARTHEL  
Editor-in-Chief

LUCY REYNOLDS  
Art Editor

HEDWIG STOCKER  
Treasurer

Assistant Advertising Manager . . . . .	LUCISE MURPHY
Associate Editor . . . . .	THERESA SHEA
Associate Editor . . . . .	MARY TANCRED



## Editorial

The great blessing of non-centralized education is the wide margin of independence allowed the individual institutions. Over the above scholastic technicalities, courses of study, graduation requirements and the like, necessarily uniform to comply with the regulations of the great standardizing agencies, each college is allowed to lead a social and religious life of its own, to develop its own personality.

It is this intangible factor, the atmosphere of the college, and not the extent or nature of its requirements, which gives the keynote of its training. Hence the particular meaning attached to holding a degree from a particular college or university. Hence, too, the meaninglessness of shifting from one institution to the other in an effort to gather the one hundred and twenty credits which will mean a degree. Hence, the tragedy of being graduated from a blank-face college, one which had no particular influence to exercise on its students because it was empty of all but class-room fundamentals.

Thank God! Webster had a soul to impress on ours, an atmosphere to permeate the four years of our lives gladly entrusted to her, our Alma Mater. So strong is this, Webster's own spirit, that it is the first point commented upon by the many distinguished educators who have paid visits to the Institution. Yet so elusive it is, that it slips between the fingers holding it up for examination.

It is an atmosphere thoroughly satisfying to heart, mind and body. The latter is perhaps the first aware of the unusual coziness of the place. In contrast to the cold, stiff, impersonal dignity of many a famous hall of learning, the geniality of Webster's sunny, flowery class rooms, of the gayly decorated living quarters is a hallowed relief.

The mind is then aware of the delightful air of studiousness which pervades the place. The casual visitor may fail to discover nary an ounce of the proverbial midnight oil on the premises, but he might as likely as not chance upon a most animated session held by collegians in the informality of their boudoirs, on the latest development of their psychology, if not ontology, studies.

The interest manifested in cultural subjects, the rectitude of students' opinions as to what should be held as worth while, the seriousness of their tastes is embodied in the atmosphere of the place.

But the one trait which causes Webster to stand apart from all other colleges, the one which inspires undying loyalty and enthusiasm for their school in the hearts of the Loretto girls is the friendliness of relations between Sisters and girls. Nowhere else is there more sympathetic attitude on the part of professors, nowhere else is there more respectful freedom of expression on the part of students. Nothing is too big or too little for the girls to talk over with their teachers.

Thus the atmosphere of Webster is that of home, not alone in the warmth and comfort it provides for the body, but in the cordiality with which it surrounds, for four too short years, the privileged ones entrusted to its care.

The Web Staff



HELEN MCGUIRE  
Associate Editor



LORETTA MALONEY  
Business Mgr.



ROSAMOND SMITH  
Editor-in-Chief



JEANNETTE STIRITZ  
Circulation Mgr.



CELESTE FEHLIG  
Asst. Cir. Manager

# ATHLETICS





### Athletics

"Come out, girls, and try for the track team!" was the general cry last spring. So after hard and intensive training a team was picked. Then came the real thrill:—A trip to Arcadia, Mo., where we were to compete with Arcadia College in track and field events.

The great day arrived and the much elated team, accompanied by their coach, Miss Reynolds, boarded the Frisco train Saturday morning, May 23rd, arriving at Arcadia at noon. They partook sparingly of dinner, for Miss Reynolds, who sat at the head of the table, kept her eagle eye on the team to see that no one ate bread or potatoes. Poor girls!

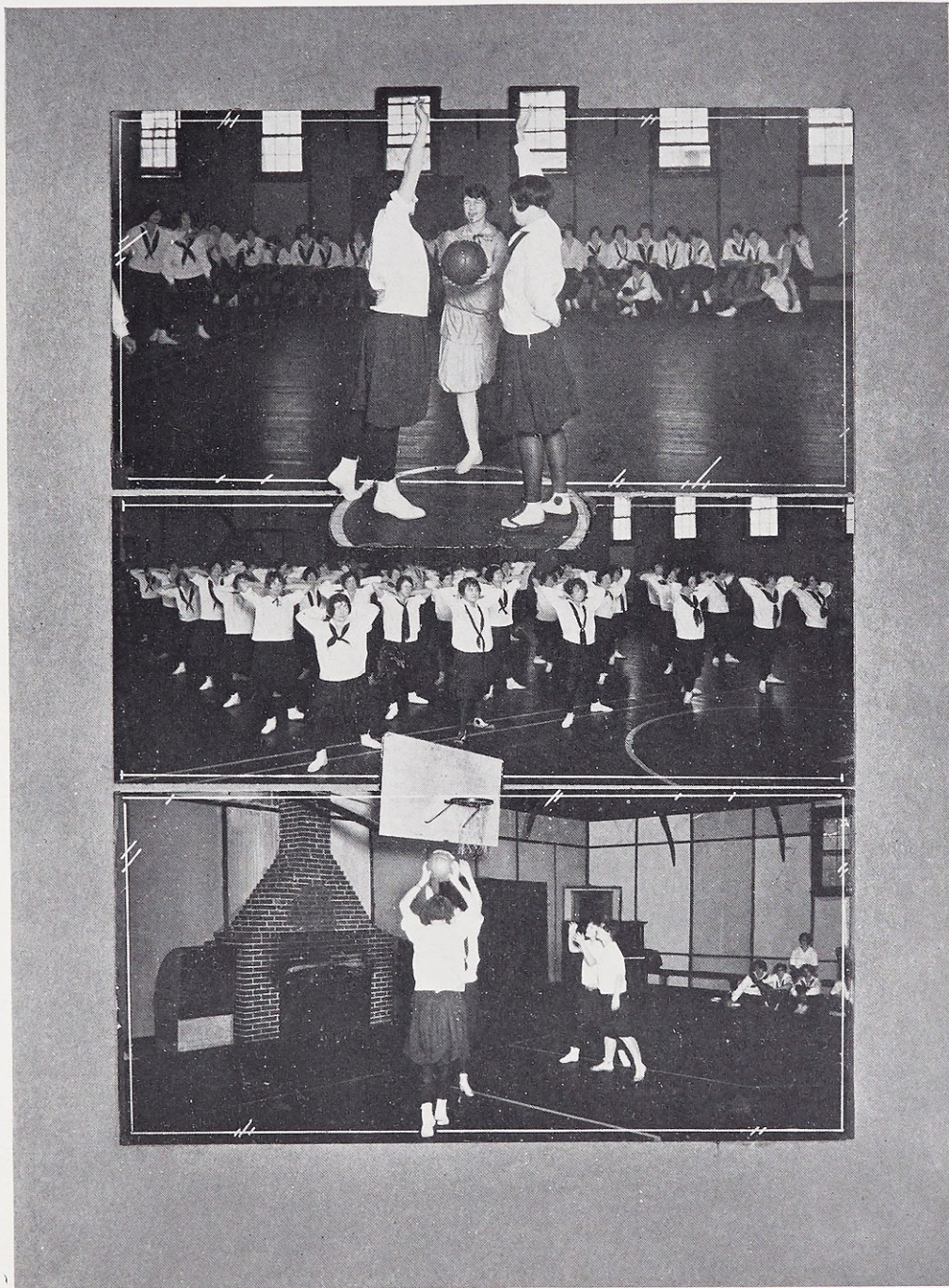
The all-round star, Harriet Averill, was captain of the team and the other members were: Virginia McClung, Celeste Block, Genevieve Barthel, Mary Haberl, Pauline Shocklee, Juanita Abell, and Dorothy Dahmus.

At 2:30 p. m. the whistle blew and excitement reigned.

First event . . . . .	50-yd. Low Hurdle Race . . . . .	Won by Arcadia
Second event . . . . .	50-yd. Dash . . . . .	Won by Arcadia
Third event . . . . .	Shot Put . . . . .	Won by Webster
Fourth event . . . . .	Basket-ball Throw . . . . .	Won by Webster
Fifth event . . . . .	Base-ball Throw . . . . .	Won by Webster
Sixth event . . . . .	Running High Jump . . . . .	Won by Webster
Seventh event . . . . .	Running Broad Jump . . . . .	Won by Arcadia
Eighth event . . . . .	Standing Broad Jump . . . . .	Won by Webster
Ninth event . . . . .	Relay Race . . . . .	Won by Webster

The final score was 48½ to 25½, in favor of Webster. Though Arcadia lost they were good sports and treated the Webster girls royally. Knowing

W.C.



ATHLETICS—Continued

how hot and thirsty the contestants would be the Sister-hostesses very generously served ice-cream cones, lemonade and cake.

Webster then bade good-bye to Arcadia, "and wearily drug themselves and their luggage to the train." In spite of their physical weariness, their lung capacity was unimpaired and before the train pulled into Union Station both train crew and passengers knew that—"We had won!"

GOLF

A surprise was in store for the girls when they returned this fall. A beautiful Approach and Putt Golf Course had been laid out on our spacious grounds by one of Saint Louis professionals. It is most picturesque having red and white heart-shaped flags and painted on each one is the name of the hole. Such names as: Flower Pot, Love, The Fence, The Divide, The Sign, Shorty, Apple Sauce, Heart, and the last being called The Sigh. The girls took to this game like ducks to water, but as October was a very rainy month, it was almost a case of having to be ducks. Everyone is patiently waiting for the warm, dry weather, when the tournament will begin, the winner of which will receive a silver cup.



ATHLETICS—*Continued*

TENNIS AND HORSE-BACK RIDING

Think, girls! A tennis tournament too for those who prefer it to golf and there are many. Some girls rise at 5 a. m. to get in extra practice. Can you imagine such enthusiasm?

What an attractive sport horse-back riding is and how the girls turn out in their riding togs and canter over the country roads on high spirited horses with Miss Reynolds in the lead.

FIELD DAY

Now who would believe that there was room for any more excitement, but just wait until Field Day in May. Then the terrace will be covered with spectators cheering for their friends and wildly waving gold and white pennants in the air. Ah! at last the awards. Silence! Quite a contrast to the noise heard before the final whistle. Who is going to be the winner? Sorry, but you will have to wait until May.



W.C.



"ABBU SAN" AND VAUDEVILLE SNAPS



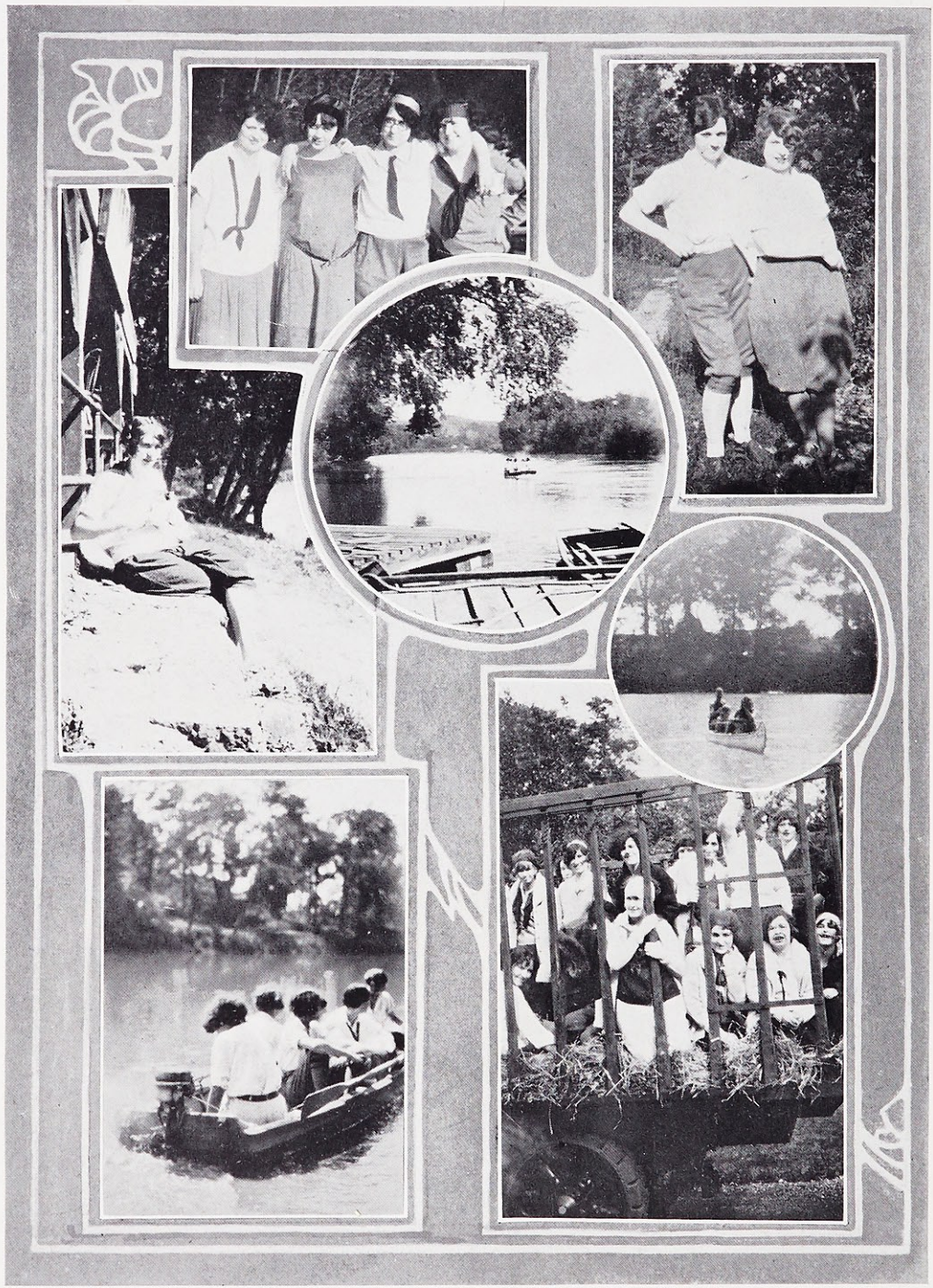
WHEN "WE" WERE FRESHIES

*Calendar 1925-1926*

- MARCH 12 . . . . Mr. Paulding (Rivals) 3:00 p. m.  
 MARCH 12 . . . . Basket-ball Game 7:45 p. m.  
 MARCH 1-21 . . . . Girls Scout Course.  
 MARCH 11 . . . . C. Heithhaus, S. J.  
 MARCH 13 . . . . Piano Recital, Miss Marian Murtaugh.  
 MARCH 19 . . . . Musical Recital, Grace Cantwell and Lillian O'Connor.  
 MARCH 24 . . . . Dramatic Art Department Presents "Abbu San."  
 MARCH 25 . . . . Basket-ball Game: College vs. Dulcies.  
 APRIL 16 . . . . Dramatic Class Presents "Far Away Princess and "Old Romance."  
 APRIL 20 . . . . Seniors' Card Party.  
 APRIL 22 . . . . Vaudeville.  
 APRIL 24 . . . . Mr. Curtis from Missouri University visits the College.  
 APRIL 27 . . . . Lecture "Mendel, and the Laws of Heredity." Dr. James J. Walsh.  
 APRIL 29 . . . . Piano and Vocal Recital, Miss Lucienne Iberger and Miss Margaret Tiernon.  
 MAY 6 . . . . Tea for Seniors of Catholic High Schools.  
 MAY 8 . . . . Freshman entertain the College at an Informal Dance at Algonquin Country Club.  
 MAY 10 . . . . Musicale Loretto Conservatory.  
 MAY 11 . . . . K. S. D. Radio Program.  
 MAY 16 . . . . Sophomores' Tea Dance at the Chase.  
 MAY 17 . . . . Dramatic Recital, Miss Lucinda Clements.  
 MAY 18 . . . . Conservatory Closing.  
 MAY 20 . . . . Juniors entertain Seniors on a delightful hayride.  
 MAY 21 . . . . C. M. M. C. Pageant.  
 MAY 23 . . . . Webster vs. Arcadia in a Track Meet at Arcadia, Mo. Score 43½ to 28½ in favor of Webster.  
 MAY 24 . . . . Musicale Conservatory.  
 JUNE 1 . . . . Banquet. "Comedy of Errors."  
 JUNE 2 . . . . Alumnae Day. Alumnae Luncheon. Planting of the Ivy.  
 JUNE 3 . . . . Graduation. Reception to the Seniors.  
 SEPTEMBER 12 . . . . Registration of non-resident students.  
 SEPTEMBER 14 . . . . Registration of resident students.  
 SEPTEMBER 16 . . . . Organization of classes.  
 SEPTEMBER 23 . . . . Mass of the Holy Ghost.  
 OCTOBER 8 . . . . Lecture by Father Lord, S. J.  
 OCTOBER 12 . . . . Fall Day.



WC



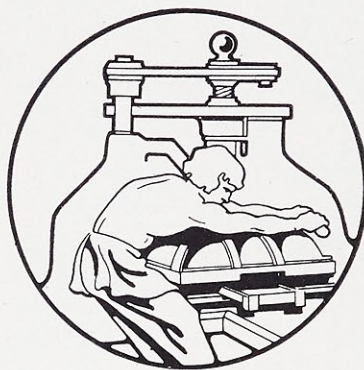
FALL-DAY SNAPS



FRESHMEN HIKE

WDC

Wiese made books are characteristically different. The secret of their success is the intelligent aid of their men in building high-class annuals economically.



COVER

ENGRAVINGS

PRINTING

OF

*The Lauretanum*

BY

WIESE PRINTING COMPANY

PINE AT TWENTY-SECOND STREET

CENTRAL 3669

WC

We, in unison with other Webster  
Merchants' are proud of

WEBSTER COLLEGE

and appreciate your patronage

.....  
WE DELIVER EVERYTHING WHEN  
YOU WANT IT—AS YOU WANT IT.  
TRY THIS DRUG STORE FIRST.  
.....



Webster 16 or 49

OLD ORCHARD PHARMACY

ALBERT CHESHEN, Manager

*The Store Beautiful*



Garfield 0242

# ELLIOTT & BARRY ENGINEERING CO.

Heating Engineers and  
Contractors



1426 Olive Street

ST. LOUIS

## Safety First

Webster Groves  
Trust Company



Capital	- -	\$100,000.00
Surplus	- -	50,000.00
Undivided Profits		33,000.00
		<hr/>
		\$183,000.00

Phone Lindell 4600

For Cleaning and Dyeing  
Satisfaction Send it to

**SCHUCKS** CLEANERS  
and DYERS

4110 Olive Street

EDWARD A. FRITZ  
Pres. and Gen. Mgr.



TOILET ARTICLES

DE LUXE ICE CREAM

COME IN AND SEE OUR STOCK

## The DRUG SHOP

(Under New Management)

Corner Big Bend Road and Old Orchard

GIVE US A CALL

WE DELIVER

Webster 2733

WE DELIVER



# JAS. J. O'CONNOR COFFEE CO.

J. J. O'CONNOR, Proprietor

*IMPORTERS, JOBBERS, ROASTERS*

COFFEES :: TEAS :: SPICES

5608 Delmar Blvd.

St. Louis, Mo.

Special Furniture

Artistic Lamps

## Exclusive Wall Papers

THAT ARE DIFFERENT

Interior Painting and Decorating

P. LOIRE WALL PAPER CO.

3748 Washington Blvd., Cor. Spring

Mirrors

Scenic Panels

*Say It With Flowers*

Designing  
Cut Flowers  
Pot Plants

## Cerny Floral Co.

STORE

122 E. Lockwood Avenue  
WEBSTER GROVES, MO.  
Webster 2950

GREENHOUSES

430 So. Van Buren Ave.  
KIRKWOOD, MISSOURI  
Kirkwood 916

Residence, Kirkwood 337-W

## ICE IS FOR SUMMER USE

There's the convenience of the handy well iced indoor refrigerator.

*On the other hand the Danger—Reliance on outdoor refrigeration means danger to you; exposure, with colds as the result—and the danger to the food from the dust laden air.*

*And the final fact—that food needs an even cold temperature and that takes the ice filled refrigerator.*

## KEEP ON TAKING ICE

CABANY 2555

## McNAMARA PLUMBING CO.

SANITARY ENGINEERS

6236 Delmar Ave.

St. Louis

W.C.

## NEWELL MOTOR CAR CO.

USED CARS



3422 Lindell Blvd.  
Lindell 8122

3015 Locust Blvd.  
Jefferson 2600

Bomont 1864

Central 5450

## CASPER STEHLE BEDDING CO.

Manufacturers of

MATTRESSES, PILLOWS AND BEDDING

H. C. SMITH, Pres. and Treas.

19th and Morgan Sts.

St. Louis, Mo.

Parkview 1600-1-2-3

### DORR & ZELLER CATERING CO.

Weddings, Receptions and Teas  
Supplied on Short Notice

DeBaliviere and Waterman Aves.  
Saint Louis

Webster 2495

### Lockwood Grocery Co.

Fred W. Prehn, Pres. and Gen. Mgr.



617 E. Lockwood Ave.

WEBSTER GROVES, MO.

## ICE SKATING

NOW OPEN

## WINTER GARDEN

DeBaliviere Avenue, Near Delmar  
(5700 West)

SESSIONS

Daily—Afternoons at 2:30, Evenings at 8:00  
Saturday, Sunday and Holiday Mornings at 10:00

GOOD MUSIC

INSTRUCTORS

W.C.

**GRAPE BOUQUET**

This Grape Bouquet is the mark of a good store, and your assurance of a wonderful grape-flavored drink from the house of

**ANHEUSER-BUSCH**  
ST. LOUIS

*The Cover for This Annual Was Created  
and the Binding Done by*

**BECKTOLD PRINTING & BOOK MFG.  
COMPANY**

200-212 PINE ST.

ST. LOUIS, MO.

SEND FOR SAMPLES

**Shrewsbury Printing  
and Stationery Co.**

AUGUST M. LEMBERGER, Manager

*Everything in Printing*

Phone Benton 763

7726 Big Bend Road

Shrewsbury, - - - St. Louis, Mo.

**OLD ORCHARD  
RESTAURANT**

Confectionery and Ice Cream  
Parlor

643 E. Big Bend Rd.

Regular Meals  
Fountain Service

Lunches  
Strictly Sanitary

W.C.

# THE OZARK THEATRE

DEPENDS ON GOOD PICTURES

Good Music and Service for Its Patronage

Yes, and it's all there

*J. L. Klein & Co.*

Manufacturers and Distributors of

Pure Food Products for Institutional Uses

118 WALNUT ST.

ST. LOUIS, MO.

Phone Webster 2446-W

## Marinello Beauty Shop

Facial and Scalp Treatments  
Marcel Waving—Water Waving  
Manicuring

W. Lockwood near Gray Ave.

Margaret Bennett Webster Groves, Mo.

## BLANCHE L. DINUS

*The First Class Dry Goods Shop*

615 E. Lockwood Ave.

Webster Groves, Mo. Phone Webster 2758

W.C.



ART IN SHOES  
PEACOCK SHOP

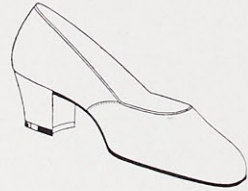
Eight O Eight Olive Street

Arcade Building

SAINT LOUIS

*Popular Prices*      *Exquisitely Styled*

New creations designed for every occasion. Mode reflecting individuality in color, style, leather, and nicety of finish. PEACOCK shoes express the utmost in distinctive charm and lasting beauty.



Phone, Bell, Webster 1277-1278

WEBSTER 99

HOFFMAN'S GROCERY  
& MEAT MARKET

LOCKWOOD AND PLANT

When you want  
THE VERY BEST GOODS  
at the  
LOWEST POSSIBLE PRICES  
Come to Our Store

Old Orchard Dry  
Goods Co.

Al Levy, Proprietor

658 Big Bend Road  
WEBSTER GROVES, MO.

Geo. D. Fisher & Co.

OPTICIANS

KODAKS AND PHOTOGRAPHERS'  
SUPPLIES

MAIN STORE

915 LOCUST STREET  
Olive 1307

BRANCH STORE

METROPOLITAN BUILDING  
510 NORTH GRAND BLVD.  
GRAND BLVD. AND OLIVE STREET  
Lindell 423

THE VOGUE SHOP

E. A. ALLEN

*Millinery and Dresses*

Webster 1721

50 W. LOCKWOOD

*Compliments of*

JOE GARAVELLI  
DeBaliviere and DeGiverville



Phone  
Webster 2280

Ladies' Shingle  
Bob a Specialty

## CHRIST CLAND BARBER SHOP

115 W. Lockwood  
Near Gray Ave.

Up-to-Date  
Sanitary Shop

5 First Class  
Barbers

Established 1893

## CLAMP-PREHN PLUMBING CO.

Office: 11 North Gore Avenue

Webster 18

A. L. PREHN  
Res. Tel. Webster 434

WEBSTER GROVES,  
MISSOURI



# HUNLETH MUSIC CO. 516 LOCUST ST.

MOST COMPLETE MUSIC HOUSE IN ST. LOUIS

IMPORTERS & JOBBERS OF

MUSICAL INSTRUMENTS.

BAND INSTRUMENTS

ORCHESTRA AND BAND  
SUPPLIES

VICTROLAS  
RECORDS



SHEET MUSIC

FOREIGN & DOMESTIC  
SHIRMER, WOOD, LITOLF ED. ETC.



# THE HENSGEN-PETERS-SMITH COMPANY

ST. LOUIS

*Recognized as Headquarters for and Connoisseurs of*

QUALITY TABLE PRODUCTS

*for*

Clubs, Hotels and Institutions

*Distributors of the*

"AT-LAST-A"—Extra Fancy

"TRABON"—Choice

and

"CHIC"—Fancy

"H. P. S." Brands

AT-LAST-A and CHIC Brands Recommended  
by and Used Exclusively at Webster Groves

*Your Hosiery Problem  
Let Us Solve It*



HOSIERY SPECIALISTS

For 18 Years

821 LOCUST

We Want

**YOUR TRADE**

If Good, Reliable Goods, Lowest Possible Prices, Fair and Square Dealing, Polite Attention will get it, we can count on you for a customer.

A. Brandenburg

638 Big Bend Road

WEBSTER GROVES, MISSOURI

Select Your Optician as You Do  
Your Surgeon, Banker or Lawyer

YOUR eyesight is too precious to permit anyone to experiment with it. Intrust the care of your eyes only to those who have acquired expertness by long years of experience.  
Be satisfied with nothing less than Aloc Glasses.



513 Olive Street Grand and Washington





# HARPER'S PHARMACY

OPPOSITE THE LOOP

Sutton and Maple Aves.

Maplewood

Soda Fountain and Luncheonette Service

Martha Washington and Whitman's Candies

Eaton, Crane & Pike Co.'s Stationery, Waterman's Fountain Pens

Webster 2990

## Phillips Motor Co.

Lakewood and Summit  
WEBSTER GROVES

Dodge Brothers Motor Cars

Graham Brothers Trucks

## EMPRESS THEATER

OLIVE AT GRAND

The Home of The  
Woodward Players

Where You Are Entertained With  
The Best  
Every Evening

Matinees  
SUNDAY, THURSDAY, SATURDAY

## FOR HEALTH'S SAKE

Ask Your Grocer  
for  
WHITE ROSE  
BUTTER



Guaranteed to  
Please Even the  
Most Fastidious  
or Money Refunded

DE COURSEY CREAMERY CO. s. w. HECKEMEYER, Mgr.

# F. BURKART MANUFACTURING CO.



CENTRAL 1370  
CENTRAL 1371

J. D. HEALY, President  
Residence, 3118 Allen Avenue

# Henry Hiemenz Realty Company

*Realtors*

ESTABLISHED 1873

SALES—LOANS—RENTALS—INSURANCE  
AND RENT COLLECTIONS

614 Chestnut Street

St. Louis, Mo.

## STEPHENS

MEN'S WEAR

MAYFAIR HOTEL

Eighth & St. Charles St. Louis

Exclusive Agency  
For

FINERY CORAL BRAND HOSIERY

*No Runs for Your Money!*

A Free Dye Service

*We offer a Hosiery Dye  
Service Absolutely Free!*

The Store of Personal Service—Steve himself

## Webster Groves Cab Co.

J. Milton Johannes, Manager

Day and Night

"TAXI" CAB

and

LIMOUSINE SERVICE

—Call—

Webster 157

Webster 2399



## ZELLER BROS. CATERING CO.

4701-3 McPHERSON AVE.

ST. LOUIS

Ice Cream and Fruit Ices of Superior Quality  
Supplies for Parties, Etc.

Victor 2033

Central 3492

## GEO. F. SCHULENBERG

Buys and Sells Secondhand Barrels and Drums

1311-13-15 ANN AVE.

D. NEWELL, Mgr.

ST. LOUIS, MO.

WC

**Milk** —

*Fresher by a day—  
Bottled in the Country*

**ST. LOUIS  
DAIRY CO.**

20<sup>TH</sup> & PINE STS.

WEBSTER GIRLS

LOVE

Switzer's Chocolate Soldiers

Demand U. S. Government Inspected  
Meat Products—*They Cost No More*

**KREY PACKING COMPANY**

Is a U. S. Government inspected packing house and therefore offers you the assurance of purchasing PURE meat products.

**WHY NOT AVAIL YOURSELF OF THIS OPPORTUNITY?**

The U. S. Government expends many millions of dollars annually to give you this protection with no additional cost to you.

**CONSIDER WHAT THIS MEANS**

All other assurances of inspection are inadequate. Why purchase any meat products of your dealer other than that which has been U. S. Government inspected?

*Krey's X-Ray Brand U. S. Inspected Pork, Beef and Sausage  
Products Can Be Obtained at All First-Class Dealers*

**DEMAND THEM AND REST EASY**

W.C.

PHOTOGRAPHS  
PORTRAITS

*Miniatures*  
*Portrait Etchings*  
*Chalk Drawings*  
*Paintings*



Valuable additions to your Art collections  
of cherished family heirlooms and memories.

Made by  
S. ASHEN BRENNER  
Artist and Photographer

4914 Maryland Ave.

Delmar 5791

*Gallery of the Galleria Bldg.*

W.C.

In College Circles, at Parties and  
wherever Fashionable Women  
Gather "the Shoes You Admire"

are

Vogue Short Vamps

For the Style Student  
VOGUE FOOTWEAR  
are in a class by themselves



615 Locust Street

*Vogue* BOOT SHOP

ST. LOUIS, MO.

BABY FIRST



Pevely Dairy Company

Panton Pharmacy

Drug Store De Luxe

Lockwood and Plant Ave.

R

Webster 2414

Webster 2918

Compliments of

WILES-CHIPMAN LUMBER CO.



ST. LOUIS GLASS & QUEENSWARE CO.

1121-25 Olive Street

"The Gift Shop of St. Louis"

YORK DRUG CO.

200 W. Lockwood, at Gray

Prescription Druggists

Dorr & Zeller Ice Cream

Mrs. Scotti Chocolates

Light Lunches

Motor Delivery Service

Atwater Kent Radios

Exide Storage Batteries

N. P. Winters Electric Co.

Wiring—Fixtures—Repairs

644 and 652 Big Bend Road

WEBSTER GROVES, MO.

Arcade Shoe Repair Shop

H. SLOOFMAN, Prop.

FOR FINEST WORK

Shoes Rebuilt

Not "Cobbled"

9 N. Gore Ave.

Webster Groves, Mo.

St. Louis Bell Foundry

Herman Stuckstede

Henry Stuckstede

STUCKSTEDE & BRO.

Manufacturers of BELLS

2735 and 2737 Lyon Street

Phone Sidney 793

ST. LOUIS, MO.

The Sign of Quality—"DIT DID IT"

DITENHAEFER

Printing Company

Engraving

Lithographing

Stationery

Garfield 8449

1407 Pine St.

613a E. Lockwood  
Webster Groves, Mo.

Tel. Web. 1335

FLORENCE IRVIN'S

HAIR SHOP

Eugene Permanent Waving

Hair Cutting

Shampooing

Marcel Waving

Manicuring

All Kinds of Hair Work

STERTZING FLORAL CO., Inc.

7260 Manchester Blvd.

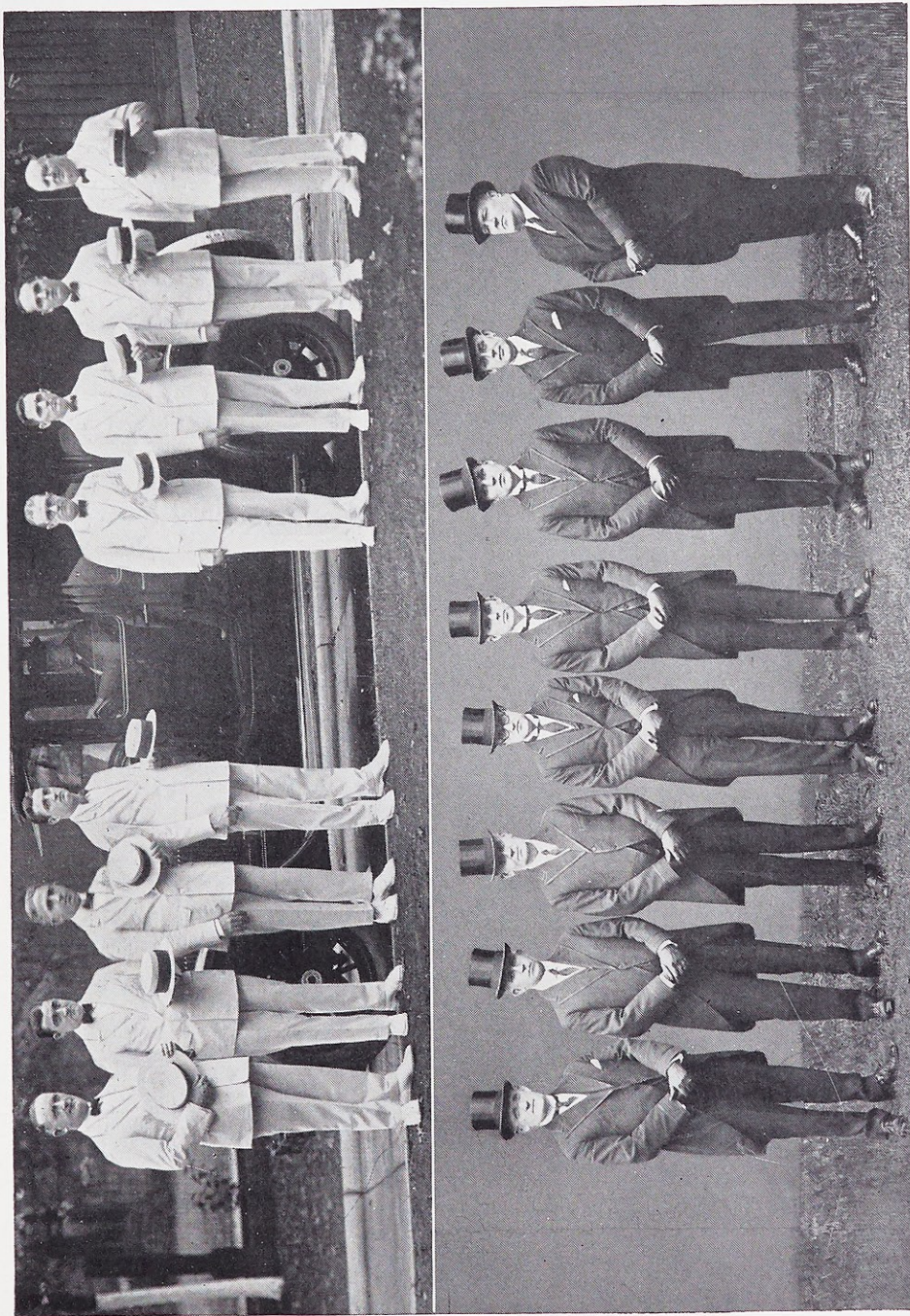
Only Telegraph Florist in St. Louis County

Open Sundays and Evenings

Visitors Welcome

W.C.

# DONNELLY SERVICE



*Some of Arthur J. Donnelly's Funeral Directors  
1925*



*finis*