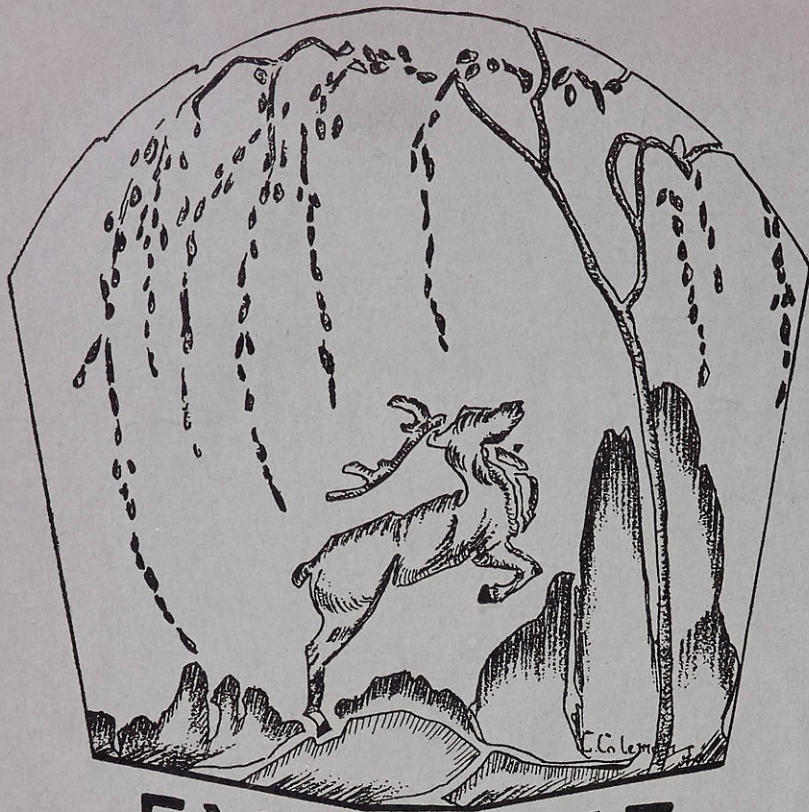


# Lauretanum



1930



EX LIBRIS

THE  
LAURETANUM

1930




ORIENT

Orient Weis

EDITOR

Thelma Pape

BUS. MGR



# The *Lauretanum*

1930



**WEBSTER COLLEGE**  
Webster Groves Missouri

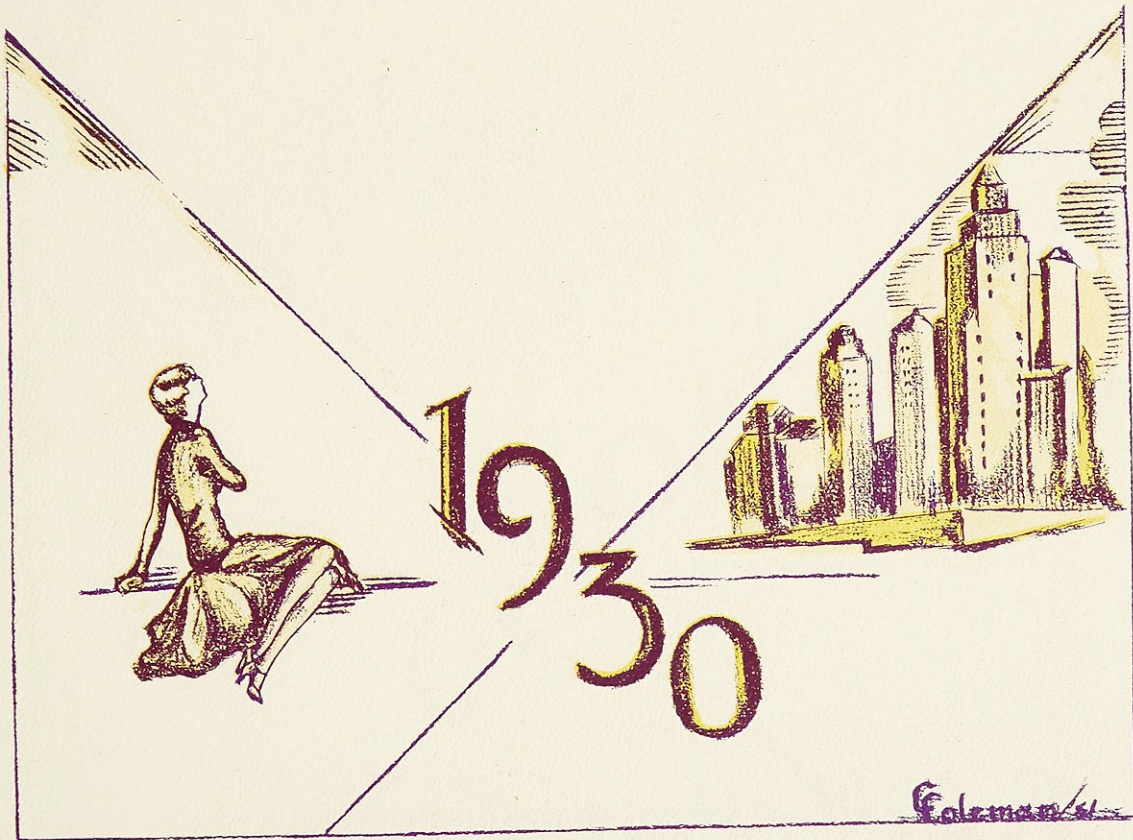
# The FOREWORD

FROM the dawn of history, growing civilization has manifested itself by a steady increase in the world's store of knowledge. This increase has multiplied educational facilities, which are, at the same time, the products of world progress, and the eliciting causes of any future world progress.



# The DEDICATION

SINCE the further development of civilization and the future greatness of the world depends upon the advancement of its educational institutions; and, more particularly, since the destiny of our college is very dear to us, this Year Book is affectionately dedicated to the progress of Webster College.



# The STAFF

ORIENT WEIS *Editor*

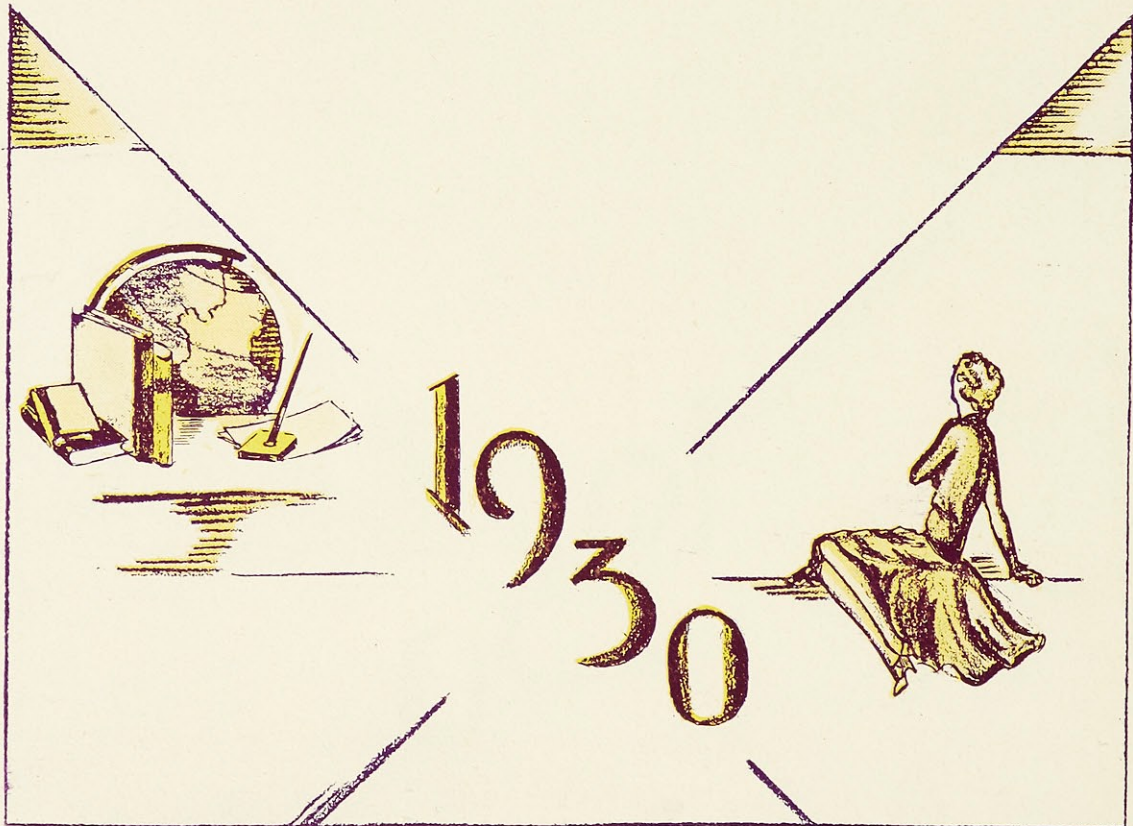
THELMA PAPE *Business Manager*

ALICE CLARKE *Associate Editor*

CAROL COLEMAN *Art Editor*

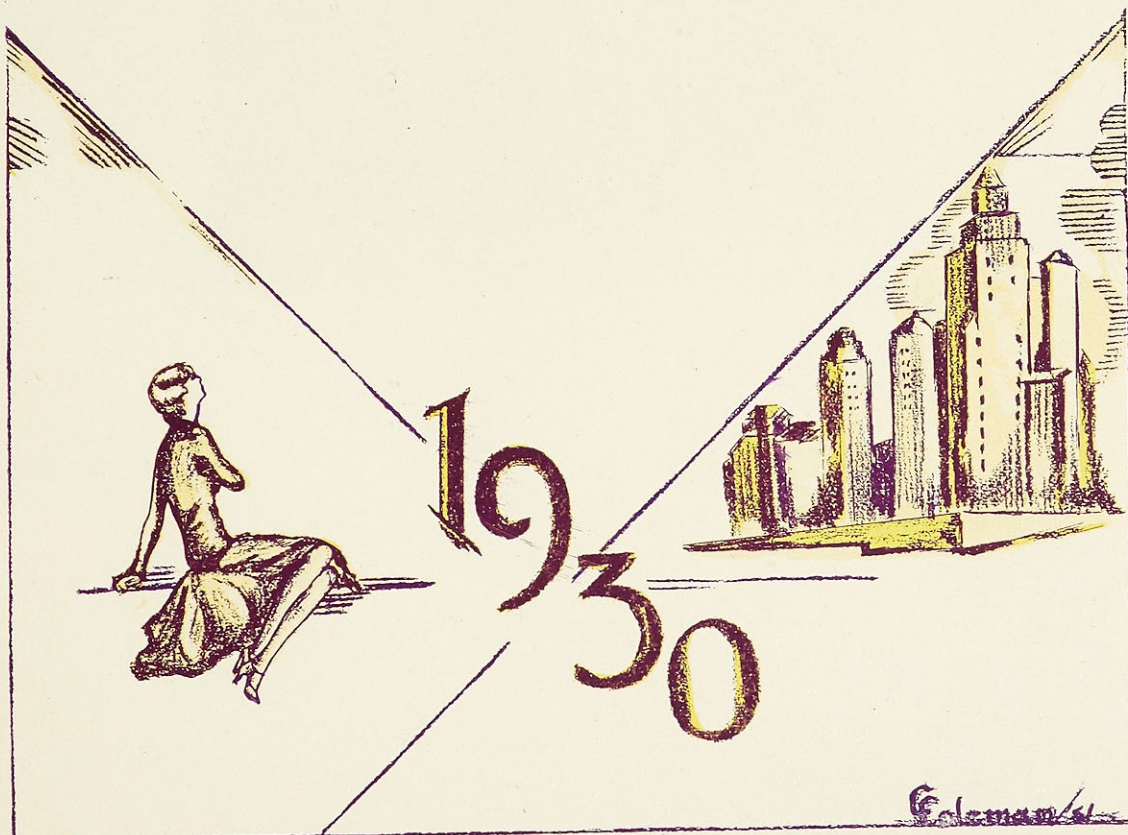
NEVA DAILY *Advertising Manager*

JOSEPHINE RABBITT *Circulation Manager*



The  
**CONTENTS**

College  
Classes  
Activities  
Student Life





*The Ambulatory*

*Views of the College*



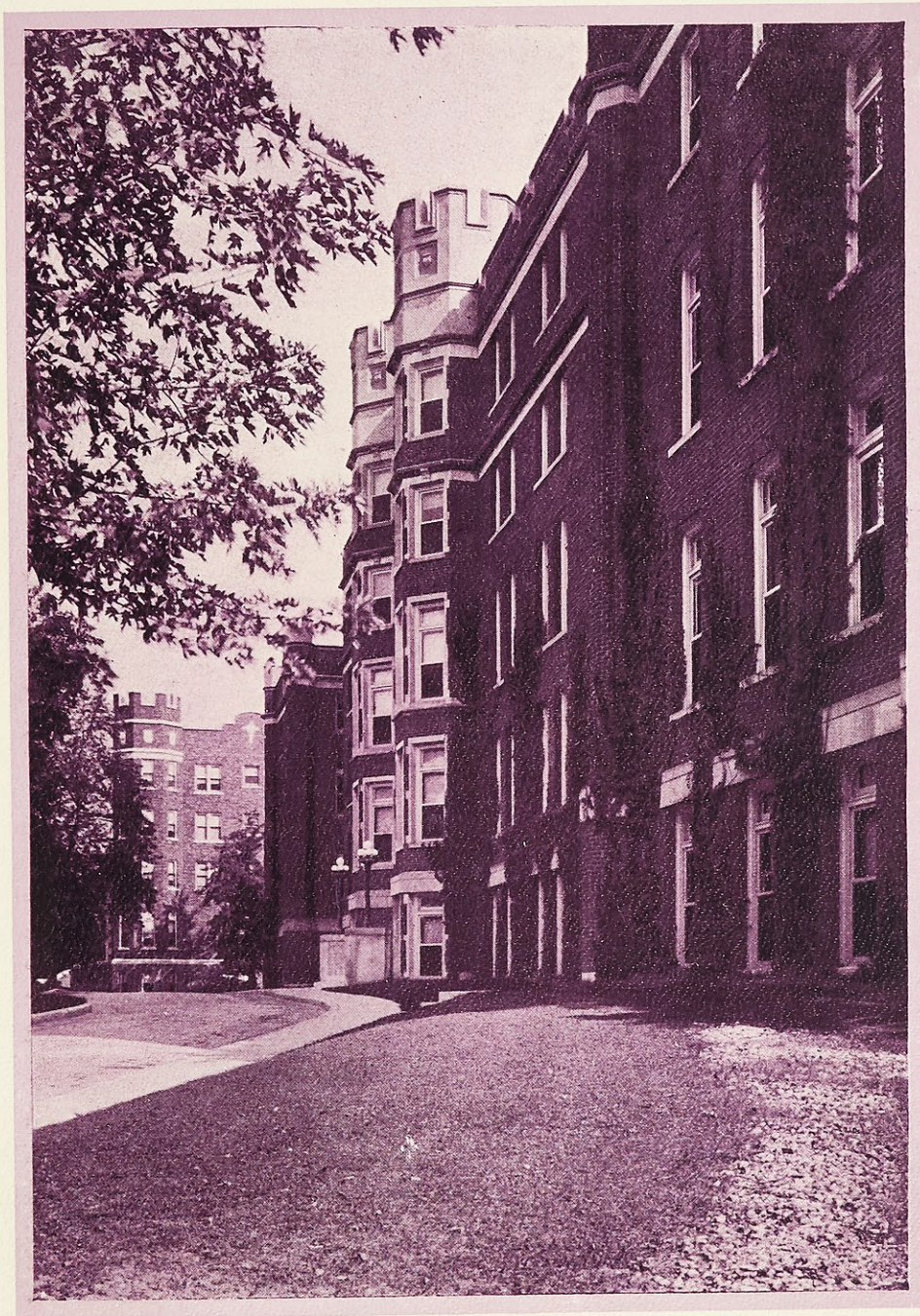
LORETTO HALL



ENTRANCE TO ADMINISTRATION BUILDING



BETWEEN THE BUILDINGS



ADMINISTRATION BUILDING



THE COLLEGE--THROUGH THE TREES



CHAPEL

*COLLEGE—It is a power house for the generation and radiation of knowledge, culture, and character development, under the controlled energy of the mind. And knowledge, culture, and character development? They are the cornerstone of progress.*



Faculty

1950

OFFICERS OF ADMINISTRATION

MOTHER MARY LINUS, A. M., *President*

SISTER M. BORGIA, A. M., *Dean*

SISTER M. EDWARDA, A. M., *Dean of Women*

SISTER LILLIAN CLARE, *Registrar*

SISTER MARY AMBROSE, *Treasurer*

- SISTER MARY BORGIA, A. M.  
Professor of Mathematics and Director of the Department.
- SISTER MIRIAM, A. M., PH.D.  
Professor of Classical Language and Director of the Department
- SISTER ALOYSIA MARIE, A. M.  
Professor of English and Director of the Department.
- SISTER MARY EDWARDA, A. M.  
Professor of Chemistry and Director of the Department.
- SISTER MARY NERINCKX, A. M.  
Assistant Professor of English
- SISTER MARY ALOYSE, A. M.  
Professor of Biology and Director of the Department.
- SISTER FRANCIS MARIE, A. M.  
Professor of Education and Director of the Department.
- SISTER MARY FELICITAS, A. B.  
Instructor in Spanish.
- SISTER MARIE CLYDE, A. B.  
Instructor in English.
- SISTER MARY PHILIBERT, A. B.  
Teaching Fellow in the Classics, St. Louis University.
- SISTER MARIE ANTHONY  
Assistant in Dramatics.
- SISTER DOROTHY MARIE  
Instructor in Domestic Art and Commercial Art.
- SISTER MARY ADELINE, MUS. B.  
Professor of Theory of Music and Director of the Conservatory.
- SISTER MARY ALBERT, MUS. B.  
Instructor in Piano.
- SISTER JUSTINE  
Instructor in Piano.
- SISTER PAULA  
Instructor in Voice Culture.

Faculty

1939



REVEREND F. V. CORCORAN, C. M., PH.  
D., S. T. D.

Professor of Philosophy and Director of the Department

REV. M. J. O'CONNELL, C.M., S.T.D.

Professor of History and Director of the Department

MR. R. H. BALDWIN, A. M.

Instructor in History and Political Science.

MR. LOUIS E. JAMES, A. M.

Instructor in Physics.

MRS. ANNA McCLAIN SANKEY

Instructor in Expression and Director of the Department.

Mlle. MARCELLE PREVOST, A. M.

Instructor in French and Director of the Department of Modern Languages.

MRS. EMILY BARNICLE TINKER, A. B.

Instructor in English.

MISS MARY ELIZABETH NEWELL, A. B.

Teaching Fellow in Mathematics, St. Louis University.

MISS GENEVIEVE BARTHEL, A. B.

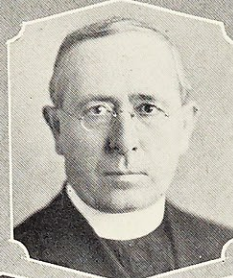
Instructor in Physical Education.

Faculty

1930

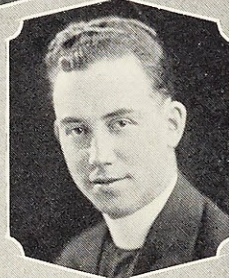
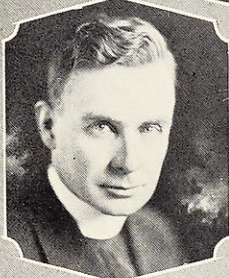
REVEREND JOSEPH P. DONOVAN, C. M.,  
J. C. D.

Professor of Sociology.



REVEREND J. P. O'MALLEY, C. M., A. M.

Professor of Religion and Director  
of the Department.

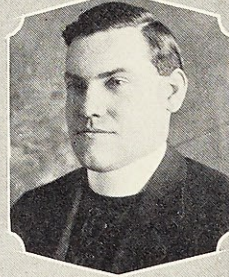
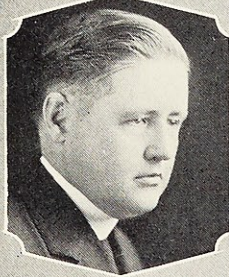


REVEREND LOUIS FALLON, C. M., S. T. D.

Professor of Religion.

REVEREND T. F. SCHMUCKER, C. M., S.  
T. D.

Professor of Scripture.



REVEREND L. P. FOLEY, C. M., S. T. D.

Professor of Philosophy.

MR. G. F. DONOVAN, A. M.

Instructor in History.

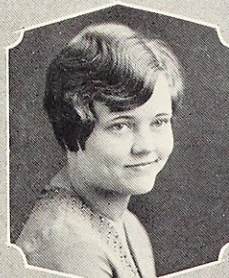


MISS FRANCES FEULING, A. B.

Instructor in Secretarial Work.

MISS HELEN EAVES, B. S.

Laboratory Assistant in Chem-  
istry.

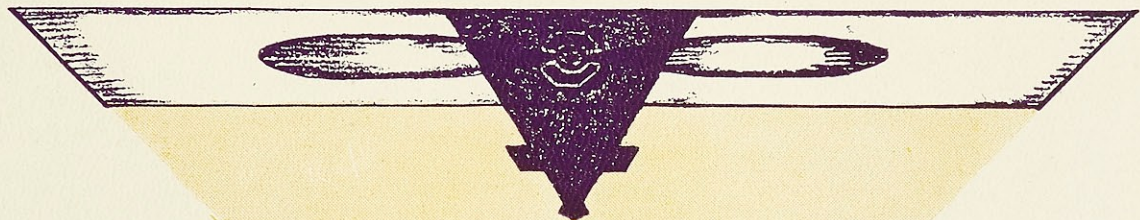
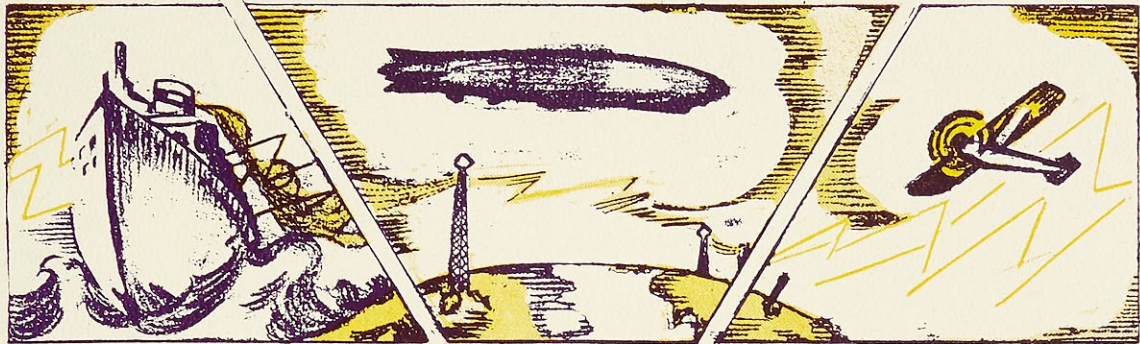


MISS ANITA MUELLER, A. M.

Instructor in Journalism.

# *The* LAURETANUM

*CLASSES—They are the beacons which mark progress during college days, each year re-focusing on larger, wider developments of thought and knowledge. They spell progress for the student as do the wonderful works of science for the modern world.*



**CLASSES**

*Colman*



# SENIORS



MARY FRANCES BROEKER

St. Louis, Missouri

A. B. in Chemistry and Philosophy

*President Class '30*

*President Chemistry Club '30*

*Vice-Prefect Sodality '30*

*Representative Student Council '30*

*C. S. M. C. '27, '28, '29, '30*

*Sodality '27, '28, '29, '30*

*W. A. A. '27, '28, '29, '30*

*Loretto Players '27, '28, '29, '30*



ROSEMARY BRENNAN  
St. Louis, Missouri  
A. B. in English and History  
*Loretine Staff '30*  
*Choral Club '29, '30*  
*Classical Club '29, '30*  
*C. S. M. C. '29, '30*  
*Sodality '29, '30*  
*W. A. A. '29*  
*Student Association '29, '30*



MARGARET VOLLET  
St. Louis, Missouri  
A. B. in Mathematics and Education  
*President Student Association '30*  
*College Queen '29*  
*President Class '29*  
*Representative Stu't Council '28, '29, '30*  
*C. S. M. C. '27, '28, '29, '30*  
*Sodalities '27, '28, '29, '30*  
*W. A. A. '27, '28, '29, '30*  
*Student Association '28, '29, '30*

The LAURETANUM



CATHERINE CODY  
St. Louis, Missouri  
A. B. in English and Latin  
*Student Council '30*  
*Editor-in-Chief Loretine '30*  
*Diploma in Dramatic Art '29*  
*Dramatics '27, '28, '29, '30; Pres. '29*  
*C. S. M. C. '27, '28, '29, '30*  
*Sodality '27, '28, '29, '30*  
*W. A. A. '27, '28*  
*Student Association '28, '29, '30*



EUGENIA BOCK

Pierron, Illinois

B. S. in Music, Piano and Organ  
*Vice-President C. S. M. C. '30*  
*Business Manager Web '30*  
*Secretary C. S. M. C. '29*  
*Choral Club '29, '30*  
*Secretary-Treasurer Choral Club '30*  
*Sodality '27, '28, '29, '30; Treas. '30*  
*W. A. A. '27, '28, '29, '30*  
*Student Association '28, '29, '30*

The LAURETANUM



ELIZABETH K. COAKLEY  
St. Louis, Missouri  
A. B. in Mathematics and Latin  
*Student Council '30*  
*Secretary-Treasurer Mathematics Club '29*  
*Choral Club '28, '29, '30*  
*Classical Club '29*  
*C. S. M. C. '27, '28, '29, '30*  
*Sodality '27, '28, '29, '30*  
*W. A. A. '27, '28*  
*Student Association '28, '29, '30*

The LAURETANUM



FRANCES ERNST  
St. Louis, Missouri  
Litt. B. in English and Spanish  
Web Staff '29, '30  
Dramatics '27, '28, '29, '30  
Choral Club '29, '30  
C. S. M. C. '27, '28, '29, '30  
Sodality '27, '28, '29, '30  
W. A. A. '27, '28, '29, '30  
Student Association '28, '29, '30



LUCYLE RAPILLARD  
Little Rock, Arkansas  
A. B. in French and English  
*Vice-President Class '30*  
*President Classical Club '30*  
*Loretine Staff '30*  
*Basketball Team '28*  
*C. S. M. C. '27, '28, '29, '30*  
*Sodality '27, '28, '29, '30*  
*W. A. A. '27, '28, '29,*  
*Student Association '28, '29, '30*



WINIFRED KANE

St. Louis, Missouri

A. B. in Chemistry and Philosophy  
Vice-President Chemistry Club '30  
Student Spiritual Council '30  
C. S. M. C. '27, '28, '29, '30  
Sodality '27, '28, '29, '30  
W. A. A. '27, '28, '29, '30  
Student Association '28, '29, '30



ELLEN QUIRK  
St. Louis, Missouri  
B. S. in Mathematics and Physics  
*President Class '27*  
*Maid, May Day '27*  
*Vice-President W. A. A. '29*  
*Treasurer Class '29, '30*  
*C. S. M. C. '27, '28, '29, '30*  
*Sodality '27, '28, '29, '30*  
*W. A. A. '27, '28, '29, '30*  
*Student Association '28, '29, '30*



DORRIT BARNICLE  
St. Louis, Missouri  
A. B. in Spanish and Latin  
Maid, May Day '29  
Circulation Manager Web '29  
Classical Club '29, '30  
Dramatics Club '29  
C. S. M. C. '27, '28, '29, '30  
Sodality '27, '28, '29, '30  
W. A. A. '27, '28, '29, '30  
Student Association '28, '29, '30

The LAURETANUM



JOSEPHINE RABBITT

St. Louis, Missouri

A. B. in Biology and Philosophy

*President Biology Club '30*

*President Poetry Club '30*

*Secretary C. S. M. C. '30*

*Circulation Manager Lauretanum '30*

*Treasurer Student Council '29*

*Sodalities '27, '28, '29, '30*

*W. A. A. '27, '28, '29, '30*

*Loretto Players '27, '28, '29, '30*



NEVA DAILY

Kankakee, Illinois

A. B. in Mathematics and Education  
*Student Council '29*  
*Prefect Sodality '30*  
*Advertising Manager Lauretanium '30*  
*President Mathematics Club '30*  
*Secretary Class '30*  
*C. S. M. C. '27, '28, '29, '30*  
*Sodality '27, '28, '29, '30*  
*Student Association '28, '29, '30*

The LAURETANUM



ERLINE STROTHKAMP

St. Louis, Missouri  
B. S. in Music, Piano and Organ  
*Editor-in-Chief Web '30*  
*Assistant Editor Web '29*  
*President Choral Club '30*  
*Biology Club '29*  
*Choral Club '29, '30*  
*C. S. M. C. '27, '28, '29, '30*  
*Sodality '27, '28, '29, '30*  
*W. A. A. '27, '28*

The LAURETANUM



ORIENT WEIS

St. Louis, Missouri

B. S. in Biology and Chemistry

President *W. A. A.* '29

Secretary-Treasurer *Biology Club* '30

Editor *Lauretanum* '30

Secretary *Student Council* '30

*C. S. M. C.* '27, '28, '29, '30

*Sodality* '27, '28, '29, '30

*W. A. A.* '27, '28, '29, '30

*Student Association* '27, '28, '29, '30

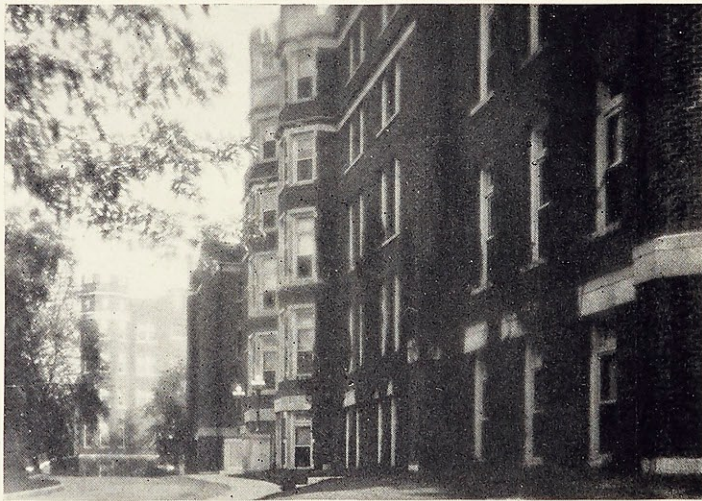


ESTELLA CAVANAUGH

Clare, Iowa

A. B. in English and French  
President C. S. M. C. '30  
Associate Editor Loretine '20  
Web Staff '29  
Sodality May Queen '29  
Treasurer C. S. M. C. '20  
Sodality '27, '28, '29, '30  
W. A. A. '27, '28, '29, '30  
Student Association '27, '28, '29, '30

*The* LAURETANUM



*Administration Building*



JUNIORS

Junior Class

1930



CATHERINE SULLIVAN  
Birmingham, Alabama

ALICE CLARKE  
St. Louis, Missouri

MARGARET LUDDEN  
St. Louis, Missouri

ANITA BAREIS  
East St. Louis, Illinois

SUZANNE CORRIGAN  
Poplar Bluff, Missouri

HELEN O'BRIEN  
Little Rock, Arkansas

MARIE WITROCK  
Webster Groves, Missouri

THELMA PAPE  
St. Louis, Missouri

MARGARET DELISLE  
St. Louis, Missouri

CATHERINE GEARY  
Highland Park, Illinois

Junior Class

1939

CAROL COLEMAN  
Kansas City, Missouri

ADELAIDE MURPHY  
St. Louis, Missouri

MARY FRANCES PERRY  
St. Louis, Missouri

MARY ROSE BURKE  
Webster Groves, Missouri

BERNICE WOLFF  
St. Louis, Missouri

DOROTHY ASHLOCK  
Alton, Illinois

KATHLEEN HAMEL  
Yazoo City, Mississippi

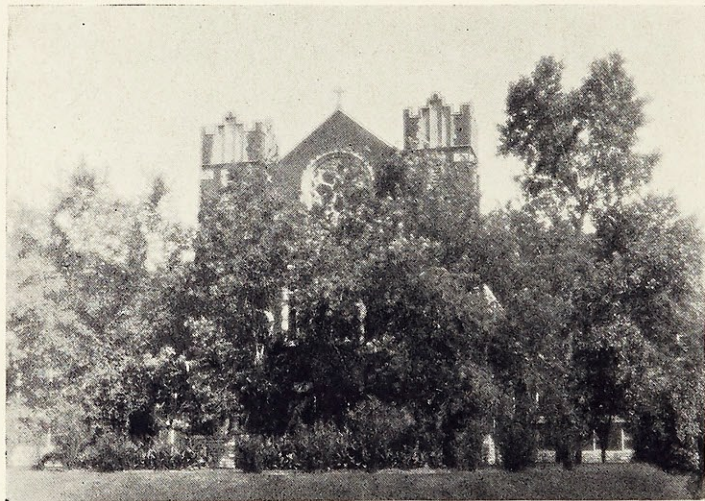
ROSEMARY HYNES  
St. Louis, Missouri

ALICE WIDMER  
Webster Groves, Missouri

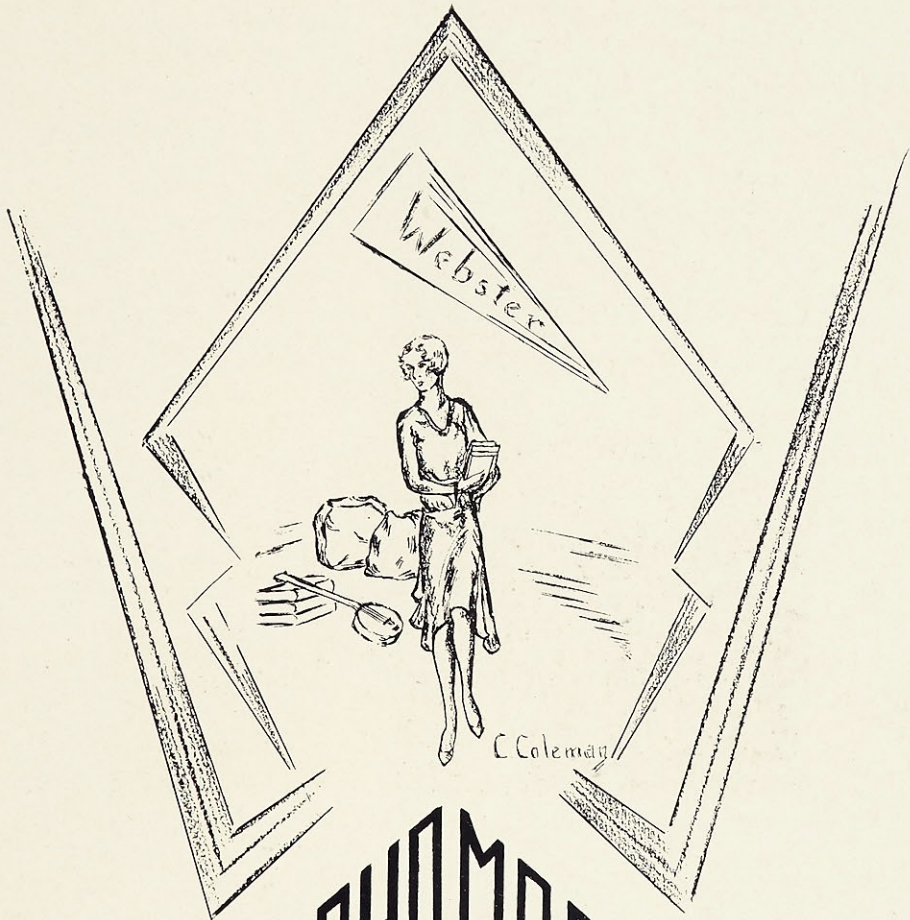
ANN RYAN  
St. Louis, Missouri



*The* LAURETANUM



*The Chapel*



# SOPHOMORES

Sophomore Class

1930



VIRGINIA DRUMMOND  
East St. Louis, Illinois

MARY DAY  
Hamburg, Illinois

MARY MARGARET EVERROAD  
St. Louis, Missouri

MARIE GROSS  
St. Louis, Missouri

MARIE WIBRACHT  
St. Louis, Missouri

ELEANORA MCGINTY  
St. Louis, Missouri

VIRGINIA CUMMINS  
Webster Groves, Mo.

MARY HICKMAN  
Vicksburg, Mississippi

LETITIA HYSLOP  
Chihuahua, Mexico

HELEN MCEVOY  
St. Louis, Missouri

CATHERINE O'FLAHERTY  
Kansas City, Missouri

MARY SCHATZMAN  
St. Louis, Missouri

PATRICIA McMULLEN  
Kansas City, Missouri

CLARA BELLE MUELLER  
St. Louis, Missouri

RUTH MCKENNA  
St. Louis, Missouri

Sophomore Class

1930

ROSE MARY FELLEZ  
St. Louis, Missouri

MARY LOUISE HOGAN  
Monett, Missouri

MARY BROWN  
St. Louis, Missouri

ESSEMINA WEINACKER  
Mobile, Alabama

BETTY SHARPE  
Kansas City, Missouri

MARY CAROLYN FIELDS  
Portageville, Missouri

KATHRYN BUSSMAN  
St. Louis, Missouri

BILLIE SURPRISE  
Wichita, Kansas

AGATHA COWLEY  
Mobile, Alabama

JANE POOLE  
Milan, Missouri

ROSEMARY GOTTLOB  
St. Louis, Missouri

INGA BLOCK  
Maplewood, Missouri

FLORENCE O'BRIEN  
St. Louis, Missouri

JANE BURLEIGH  
Webster Groves, Mo.

JANET WIMER  
St. Louis, Missouri



Sophomore Class

1930



RUTH GOODBODY  
San Diego, California

MARIE WALSH  
East St. Louis, Mo.

MARGARET SCHAEFER  
Berkley, California

ELLEN PRENDERGAST  
St. Louis, Missouri

DOROTHEA SHUFORD  
East St. Louis, Illinois

MARGARET GUNTHER  
St. Louis, Missouri

DOROTHY FAIRALL  
Denver, Colorado

DORIS CONDREN  
St. Louis, Missouri

HELEN GRAVES  
Clayton, Missouri

ESTHER KRAFT  
New Albany, Indiana

ROSEMARY BARRY  
St. Louis, Missouri

BERNADINE RIELLEY  
St. Louis, Missouri

LUCILLE KIRK  
Alton, Illinois

JOSEPHINE REDDIN  
Denver, Colorado

MARY HILLMEYER  
Webster Groves, Mo.

Sophomore Class

1930



GENEVIEVE MCBRIDE  
Las Cruces, New Mex.

FRANCES CASEY  
St. Louis, Missouri

GRACE STRECKER  
St. Louis, Missouri

ANN MARIE HEINEN  
Rayne, Louisiana

DOROTHY MEYER  
St. Louis, Missouri

MARY HYSLOP  
Chihuahua, Mexico

MARGARET WILDE  
Kansas City, Missouri

MARY ANGELA RODUIT  
Webster Groves, Mo.

MARY ZILLIKEN  
Chester, Illinois

CATHERINE STEINLAGE  
St. Louis, Missouri

CATHERINE SCHMUKE  
Jackson, Missouri

MARION GARTHOFFNER  
St. Louis, Missouri

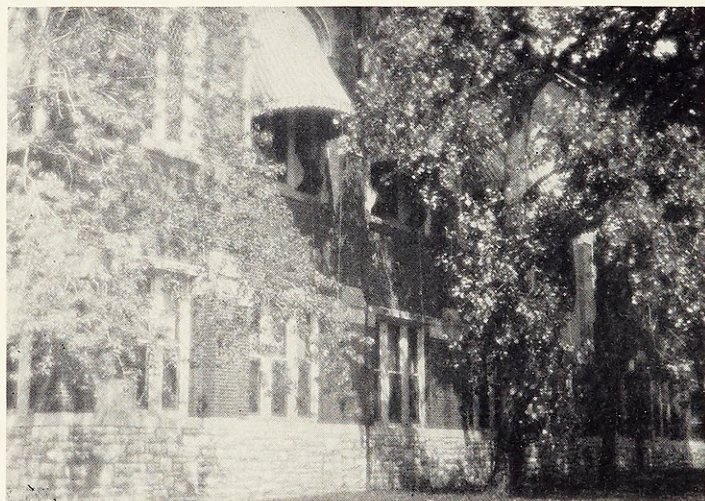
FRANCES SLOANE  
Milan, Missouri

THELMA KINSELLA  
St. Louis, Missouri

FLORINE BLEVINS  
Paris, Arkansas

ANN RYAN  
St. Louis, Missouri

*The* LAURETANUM



*The Chapel*



FRESHMEN

Freshman Class

1930



LAKME PEREZ  
Kirkwood, Missouri  
MARGARET DELMORE  
East St. Louis, Illinois

ELVIRA KRINGS  
St. Louis, Missouri  
MARIE SCHMUCKER  
Dallas, Texas  
VIRGINIA HOUCK  
Shelbina, Missouri

ELIZABETH ALLISON  
St. Louis, Missouri  
MARTHA ANN GALLIVAN  
Helena, Montana  
DOROTHY DAWSON  
New Haven, Kentucky

HELEN LEUER  
Highland Park, Illinois  
ROSEMARY CORLEY  
St. Louis, Missouri  
APPOLONIA ANDERSON  
St. Charles, Missouri

JOSEPHINE HEINEN  
Rayne, Louisiana  
MARIE COWHEY  
St. Louis, Missouri  
CATHERINE DOUTHAT  
Joplin, Missouri

HELEN LENZEN  
Webster Groves, Mo.  
EUGENIA SMITH  
St. Louis, Missouri  
BERNICE DURBIN  
Cecilia, Kentucky

Freshman Class

1930

MARGARET RILEY  
St. Louis, Missouri  
EVELYN RAPILLARD  
Little Rock, Arkansas  
MARY SCHWARTZ  
Chesterfield, Missouri



CATHERINE PEET  
St. Louis, Missouri  
MILDRED FIELDS  
New Madrid, Missouri  
MARJORIE SCHEU  
Hannibal, Missouri



JUSTINA HAYES  
Edina, Missouri  
MARION HANGGE  
St. Louis, Missouri  
MILDRED BONGER  
St. Louis, Missouri



MINNIE FIORETTI  
Hartford, Arkansas  
DOROTHY KRAFT  
New Albany, Indiana  
VIRGINIA WALSH  
St. Louis, Missouri



MAE GUIDRY  
Webster Groves, Mo.  
FRANCES MATTINGLY  
Louisville, Kentucky  
FLORENCE BROEKER  
St. Louis, Missouri



ELIZABETH WATSON  
East St. Louis, Illinois  
JANE DALY  
Kirkwood, Missouri  
MARY REGAN  
St. Louis, Missouri



Freshman Class

1930



VIRGINIA HENNESSEY  
St. Louis, Missouri  
JANET WIDMER  
Webster Groves, Mo.

ANN RUSSEL JANES  
St. Louis, Missouri

VIRGINIA FARRELL  
St. Louis, Missouri  
CECILA QUANTE  
St. Louis, Missouri

KARLEEN WISE  
Kansas City, Missouri

MARY HELEN LYNCH  
St. Louis, Missouri  
LILLIAN CASEY  
St. Louis, Missouri

LAURA LEE BALL  
Webster Groves, Mo.

MARGARET MCCABE  
Urbana, Illinois  
LEONA SIMMA  
Maplewood, Missouri

MARY LOUISE MULDOON  
St. Louis, Missouri

MARGARET WELSH  
Great Bend, Kansas  
LUCILLE JOHNSON  
Cuba, Missouri

VIRGINIA MOORE  
Cleveland, Ohio

MARY CATHERINE COLLINS  
Prentice, Illinois

MARY DOOLING  
Webster Groves, Mo.

Freshman Class

1930

BERTHA SCHLUETER  
St. Louis, Missouri

FLORA NELL ABELL  
Lebanon, Kentucky

GRACE KELLY  
Maplewood, Missouri

GLADYS OLTMAN  
St. Louis, Missouri

CLARA ROCHOW  
St. Louis, Missouri

JOSEPHINE REIS  
Belleville, Illinois

ALICE CAVANAUGH  
Clare, Iowa

AUDREY KLORER  
St. Louis, Missouri

MARGARET HOUSE  
Elizabethtown, Ky.

VIRGINIA DAoust  
Hoxie, Arkansas

AGNES ROGAN  
St. Louis, Missouri

MARGARET FLYNN  
East St. Louis, Illinois

JANE BURKE  
Webster Groves, Mo.

CATHERINE KOHL  
Belleville, Illinois

MARY CASEY  
Webster Groves, Mo.

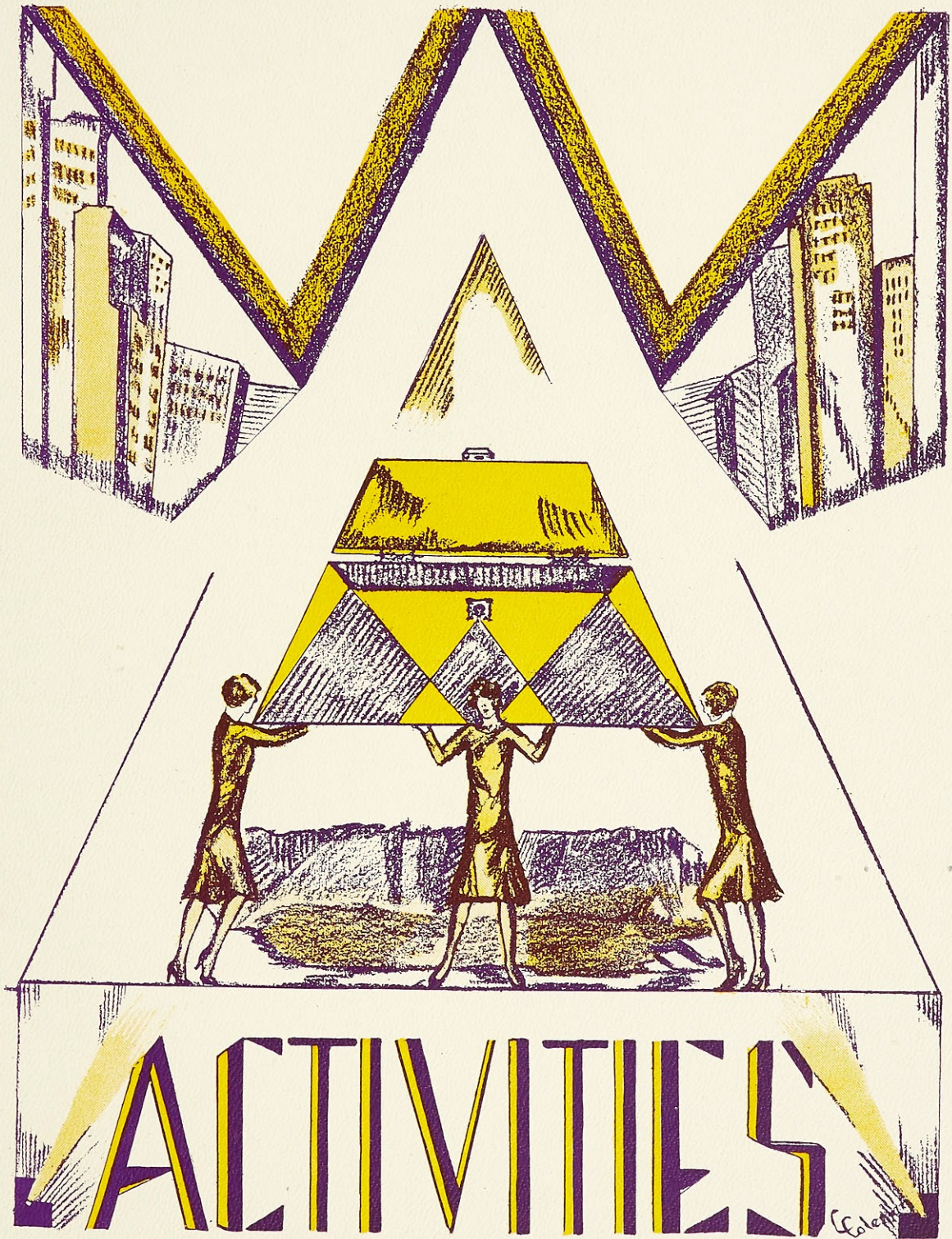
MARY CATHERINE CRANE  
Mobile, Alabama

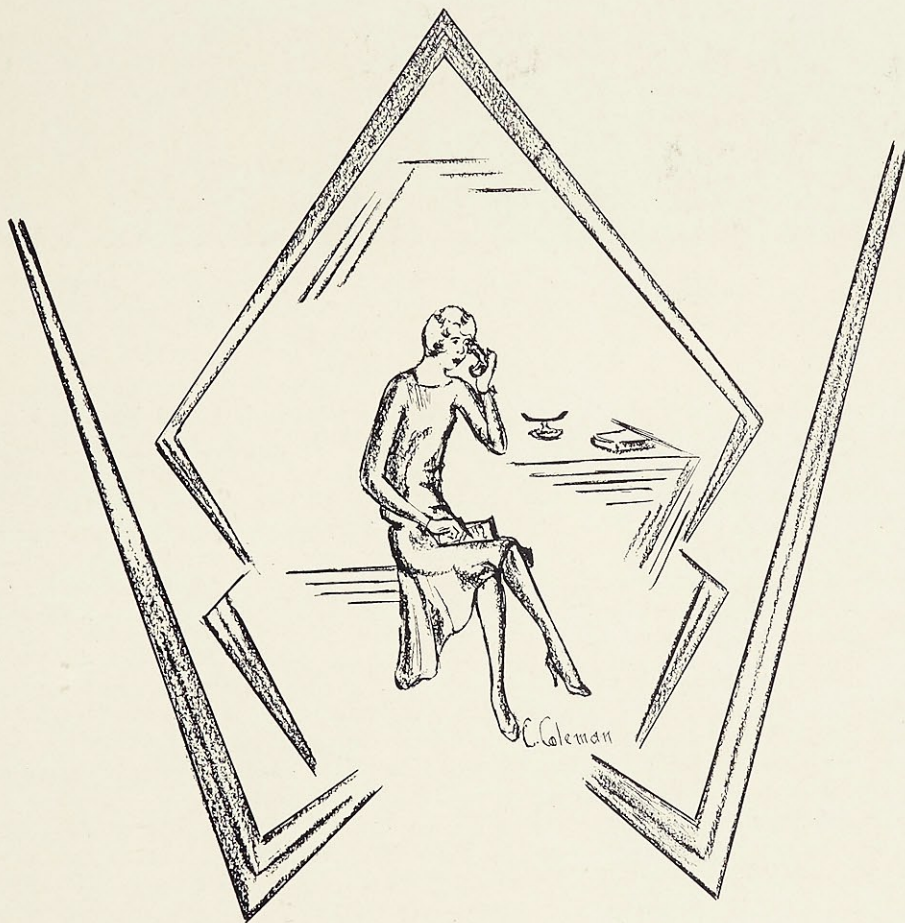
HORTENSE HOGAN  
St. Louis, Missouri



# The LAURETANUM

*ACTIVITIES—They form the experimental background, which is the foundation for intellectual and social success and progress in the student's after life, which, in many ways will be repetition of the life of her little college world.*





# ORGANIZATIONS

Sodality

1930



E. Bock  
*Treasurer*

M. Broeker  
*Vice-Prefect*

N. Daily  
*Prefect*

A. Ryan  
*Secretary*

K. Hamel  
*Assistant Treasurer*

Since we are a Catholic College, our Sodality is, and should be, the biggest activity of our school life. It is the Sodality that distinguishes our College from any ordinary college, and it is this activity that helps us to prepare ourselves to be good Catholic women, and above all, good Catholic leaders. The world is ever looking to women for leaders, and we must, and we will live up to the ideals and principles of our Catholic College. Today, probably more than ever, religion is a subject that is being discussed by everyone, and our Sodality is striving to prepare us to use our religion in every day language and to be able to answer any questions concerning our religion that we might be asked.

In order to accomplish more, the Sodality has six committees which are very active in their particular work. The Publicity Committee has always a very attractive Sodality Bulletin Board. The Catholic Literature Committee has made one big headway this year by installing a rack where we can secure Catholic pamphlets without going out of our way, and has been posting a list of the best Catholic literature. The Eucharistic Committee has been working to increase devotion to Christ in the Blessed Sacrament by an increase of visits and Holy Communions. Devotion to Christ's Mother has also been fostered by Our Lady's Committee. The neglected children who have not had an opportunity to learn their religion, have been cared for in this respect by the Apostolic Committee. And the biggest thing of the Sodality for the whole year was taken care of by the Social Committee—the reception of about fifteen members on December eighth at eight o'clock Mass.

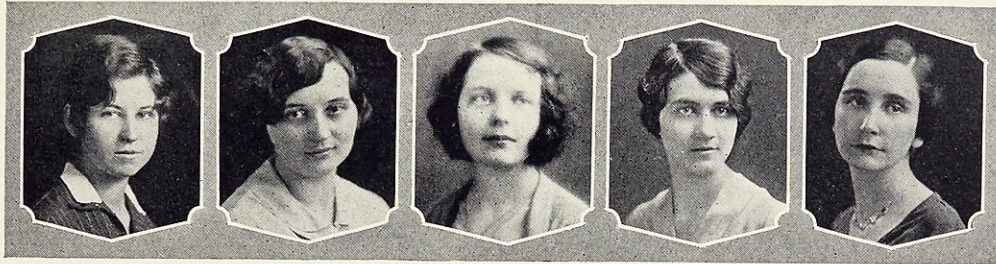
May our Sodality always gain a more prominent place in our school activity, and may we ever become more enthusiastic about it!



# The LAURETANUM

## C. S. M. C.

1939



V. Drummond  
*Treasurer*

E. Bock  
*Vice-President*

E. Cavanaugh  
*President*

M. Roduit  
*Spiritual Treasurer*

J. Rabbitt  
*Secretary*

The big convention of the Catholic Students Mission Crusade in Washington, D. C., last summer furnished our mission unit, known as the Nancy Havern Mission Unit, with a lively impetus to go forward and do bigger things than ever before. The members were spurred on to prove themselves zealous crusade missionaries such as the C. S. M. C. could be proud of.

First of all, we have carried on a crusade for prayers. The regular Mission Mass was said every month and the girls were urged to remember the missions in their daily or weekly Mass intentions. Spiritual bouquet cards for the missions were passed around and filled out at every meeting of the Unit.

Before Mission Week came around in March, the classes had elected their mission "leaders", and the girls who were chosen, took charge of the mission activities in their own classes. The girls who were thus honored were: Anita Bareis of the Junior class, Mary Virginia Cummins of the Sophomore class, and Elvira Krings of the Freshman class. The three Senior officers of the Unit acted as mission leaders in their class. The different classes, almost as soon as their leaders were chosen, proceeded to have bridge parties, dances, etc., for the benefit of the missions, and the treasury of our Unit was swelled considerably by these activities.

During the last semester a drive for the Medical Missions resulted in a good many samples of medicine which were sent on to help supply the missionaries with these medical necessities.

Besides sending occasional remembrances to the Sisters of Loretto Mission in Honyang, China, we sent several boxes to a mission conducted by the Sisters of Loretto in New Mexico.



Student Association

1930



B. Wolff  
*Treasurer*

M. Vollet  
*President*

A. Rvan  
*Vice-President*

O. Weis  
*Secretary*

Webster College boasts many student clubs and organizations, but all of these together could never carry her to the highest peak of achievement. It is only by the united action of every member of the student body that such a condition can ever be realized in a college; and so it was with this idea in mind that the Webster College Student Association was organized in 1927.

The Student Association, including in its membership every registered student of the college, acts through the Student Council, an executive body of twelve students. Of the members on this council, two are elected by the faculty, four by the Senior class, three by the Junior class, two by the Sophomore class and one by the Freshman class. The members on the Student Council for the year 1929-1930 are Margaret Vollet, president; Ann Ryan, vice-president; Orient Weis, secretary; Bernice Wolff, treasurer; Mary Frances Broeker, Elizabeth Coakley, Catherine Cody, Alice Widmer, Helen O'Brien, Mary Hickman, Dorothy Fairall, and Margaret Delmare.

A well planned Freshman Week program was the first outstanding achievement of the Student Council during this school year, and the Fall Dance, given in the Ivory Ballroom of the Hotel Jefferson, was the next important social event which it sponsored. Several charming afternoon teas in Social Hall were planned for the students and their friends during the winter months, and the spring found the Student Council active with its plans for the annual May Day celebration and for the rushing of new students for the next school year.

These are only a few of the ways in which the Council has served Webster College and its students through the year 1929-1930. The Student Council has aimed, in every instance, to further student interest and student welfare.



W. A. A.

1930



K. Hamel  
*Secretary*

A. Widmer  
*President*

A. Ryan  
*Vice-President*

J. Reddin  
*Treasurer*

Webster College now has a well developed athletic association. This organization has just concluded its most progressive year. The Webster Athletic Association promotes and increases interest in athletics by a point system which has recently been revised by a point committee. The revisions made give more opportunity for girls to obtain the awards for which every Webster athlete aspires. The requirements for these awards are scholarship, sportsmanship, health, and technical skill.

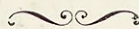
In the aforementioned revisions Miss Barthel organized a system whereby squad leaders would assist her in the various sports. Points are given toward the award to these leaders.

The Terpsichoreans were developed under the guidance of the association last year. This activity, which has for its end dancing on May Day, has been more progressive and much better organized this year than it was last.

Other important events of the W. A. A. year were the tournaments in Volley Ball, Basketball, and Baseball. The Freshmen, Sophomores, and Juniors each entered teams in the tournaments. From the class basketball teams was chosen the "Varsity."

Several first and second awards have been won but no one has as yet attained the final "W". It is not possible to obtain this final "W" until a girl has reached her Junior year. Individual trophies for basketball, track, and tennis may also be won. To any class winning the most sports during the year a plaque is given. If any class wins a plaque three times that class is presented with a large cup. The Junior class has two of these plaques and needs only the third to gain the cup. Quite naturally the Juniors are working hard.

The awards and trophies were presented at an annual banquet for the members of the association which closed the athletic year at Webster.



Sigma Epsilon Rho

1930



Margaret Ludden  
*Vice-President*

Lucylle Rapillard  
*President*

Margaret DeLisle  
*Secretary-Treasurer*

The curtain swiftly drops upon the second year of the existence of Sigma Epsilon Rho, the Classical Club of Webster College. Relaxed behind the stage are the members—some happy, some sad, but all reviewing the play in retrospect.

The scenes of ancient Rome and Greece pass in colorful panorama. The languages of these ancient peoples in song, tradition, and oration have become familiar. The customs of antiquity change to a brighter hue. Events of the past are softened by the light of understanding. These factors forming the ways and woof of the plot of life in Rome and Greece of antiquity have been assimilated by the members of Sigma Epsilon Rho through meetings and discussions.

Those lingering retrace their steps, those leaving pause in their haste for the departing actors have left a token to be cherished by future members.



Fel'enz, Walsh, Shuford, Drummend, Vollet, Brown  
Ryan, Wolff, Clarke, Perry, Burleigh, Hynes, Strecker, Cummins  
Gottlob, Ludden, Murphy, Brennan, Ccakley, Wittrock, Prendergast, Pape,  
Bivins, Bl ck, McKenna, Barnicle, Wibract, Fields, DeLisle, Weber, Rapillard

Choral Club

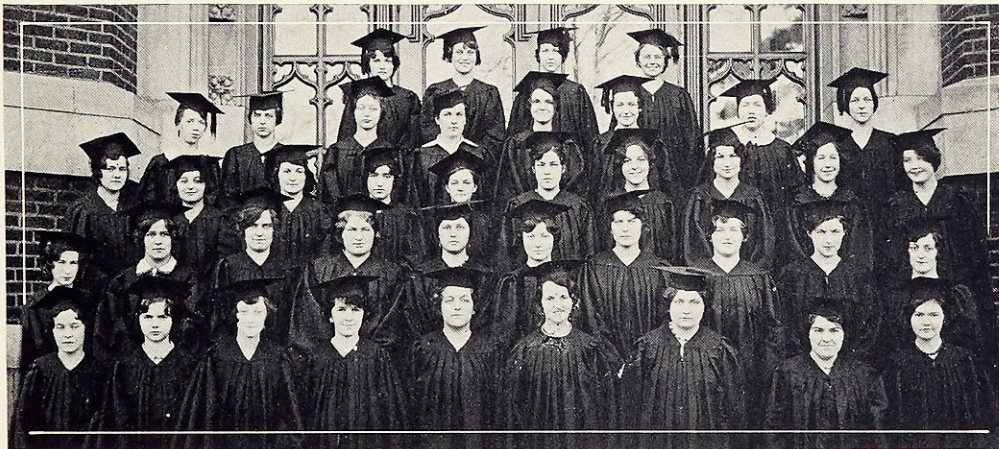


Eugenia Bock    Erline Strothkamp    Helen McEvoy  
*Secretary-Treasurer    President    Vice-President*

The Webster College Choral Club is in the fifth year of its progress. Under the supervision of Sister M. Paula, the Club has made rapid strides toward advancement within the past year. This advancement is due both to the select voices of the members and to the wonderful supervision of Sister Paula.

The Club ventured forth on two new projects this year. In order to bring back that Christmas spirit the Club was invited to sing Christmas carols at the Chase Hotel during the dinner hour. Furthermore the members had recorded "Trees," "To a Wild Rose", and "Dear Webster". The Club has appeared in five successful performances, two of which were broadcasted over Stations WEW and KMOX.

Future years hold great promise of success for the Choral Club.



Shuford, Sloane, Strothkamp, Brennan  
Perry, Schaeffer, Burke, Hegan, Prendergast, Brown, Clarke, Gottlob  
Simma, Bock, Kraft, Kohl, Weber, Perez, Wibracht, McEvoy, Graves, Fairall  
Everroad, Bussman, Wolff, Durbin, Anderscn, Delmore, Caffery, Guidry, Day, Kollas  
Ernst, Dawscn, Crane, Condren, Pape, Poole, Coakley, Geary, Burke

Sigma Phi Theta

1930



Josephin Reddin    Mary F. Broeker    Winifred Kane  
*Secretary*                      *President*                      *Vice-President*

Sigma Phi Theta, the Chemistry Club of Webster College, has made many strides the past year in the advancement of the work which prompted the organization of the club in October, 1928, namely to foster an interest in Chemistry among the students.

Sigma Phi Theta now boasts of a constitution and a large enrollment. Any student or alumna of Webster College who is interested in the science of Chemistry is eligible for membership.

Monthly meetings are held in the Chemistry Section, at which papers on topics of scientific interest are presented. The topics are selected carefully in order that they may add to the scientific knowledge of the scope and applications of Chemistry. Articles of current interest are reviewed by the students.

The officers have planned many interesting meetings at which the enthusiasm of the club members has run high when lively discussions on new and astounding developments in the field of Chemistry are held.



Re's, McGinty, Kane, Broeker, Cuante, Leuer, Reddin, Fairall, Bussman  
Bareis, Casey, Prendergast, McKenna, Rogan, Oltman, Klerer, Kohl  
Walsh, Condren, Steinlage, Wibraecht, Daly, Crane, Fields

Dramatic Club

1930



Mary Hickman  
*Treasurer*

Alice Widmer  
*President*

Helen O'Brien  
*Secretary*

The Loretto Players Club of Webster College is an organization of the Dramatic Students of the school. This is only the second year of the Club's existence but its progress has been so rapid that it has become one of the most popular organizations of the school.

The object of the Club is to advance the interest in the Drama, and to foster social activity among the Dramatic students. The meetings are held semi-monthly and are made more interesting by the reading and discussion of current plays. The young ladies in the Club avail themselves of every opportunity to enjoy all the worthwhile plays that come to St. Louis Theatres.

This year the achievement that the Club feels proudest of is its membership in the Dramatic Art League of St. Louis. The purpose of this League is to further the Little Theatre Movement in St. Louis. It is composed of the leading Little Theatres of St. Louis and the Loretto Players appreciate the honor of being one of the first groups asked to join.



Broeker, Cedy, Mueller, Smith, Ball, Burleigh, Brown, McEvoy, Fairall  
Johnson, Broeker, Krings, Pape, Moore, Daly, Bussman, Janes, Hillmeyer, Reddin  
Schmucker, Wibracht, Delmore, Burke, Geary, Everroad, Ernst, Sullivan, Rabbitt, Peole, Hickman

Mathematical Club

1930



Bernice Wolff  
*Secretary-Treasurer*

Neva Daily  
*President*

Kathleen Hamel  
*Vice-President*

The Mathematics Club, since its foundation in October 1927, has been one of the active, throbbing organizations of Webster College. It is under the able direction of Sister M. Borgia, Dean of the College and Head of the Department of Mathematics. The purpose of the Club is to foster and increase a love of, and interest in and a knowledge of Mathematics among the students.

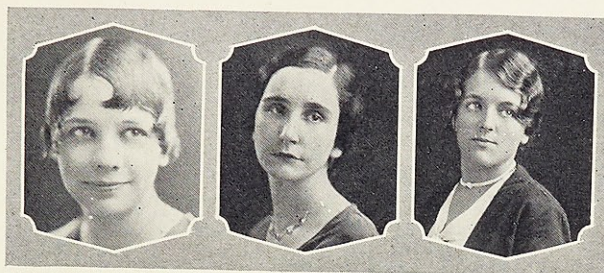
At each of the monthly meetings, two papers are discussed. The matter of these papers is problems which tend to recall knowledge which was once gained but now forgotten, or to intensify the knowledge now possessed, or to open up new paths of thought to the members of the club. Several times during the year, men of prominence in the field of Mathematics are invited to talk to the club. Among the interesting speakers of the year, was Rev. Francis Gerst, S.J., of St. Louis University.

Membership in the Club is open to all students and alumnae who have selected Mathematics as their major or minor subject. Moreover, all who are interested in Mathematics are invited to be guests at the meetings.



E. Quirk, E. Coakley, Margaret Vollet, J. Reddin  
B. Wolff, T. Pape, K. Bussman, D. Fairall  
I. Block, G. Strecker, E. McGinty, M. Hillmeyer, N. Daily

Poetry Club



Suzanne Corrigan    Josephine Rabbit    Thelma Pape  
*Vice-President*      *President*      *Secretary*

Since its foundation three years ago, the Poetry Club has been an important addition to the student life at Webster College. The purpose of the organization is to create a wider interest in poetry and to foster creative ability in poetical compositions among its members. The highest honor which this club can confer is that of Ivy Poet, bestowed upon a member of the Senior class, whose poem is read at the Planting of the Ivy in Commencement Week.

This year, the Poetry Club has held monthly open meetings to which the faculty and students were invited. Such discussions as "Modern Poetry" and "Spanish Poetry" were held, and members of the club presented papers on these subjects and gave dramatic readings from various authors. The most interesting meeting of the year was featured by a discussion of Stephen Benet's "John Brown's Body." At this meeting, various members of the club presented arguments supplemented by readings from the poem to prove whether or not this widely read book could be considered an epic American poem.



H. O'Brien, A. Widmer, C. Cody, M. Hickman, J. Burleigh  
C. Sullivan, O. Weis, E. Cavanaugh  
J. Rabbitt, T. Pape, M. DeLisle, F. Weber

Sigma Sigma Sigma

1939



Orient Weis  
*Secretary-Treasurer*

Josephine Rabbitt  
*President*

Ann Ryan  
*Vice-President*

The Biology Club of Webster College developed from the desire on the part of the students to discuss together those vitally interesting phases of biology which were brought to their knowledge in class. The Club was organized with the help of Sister Aloyse, the Director of the Department. To it was given the name Sigma Sigma Sigma (student, scope, scalpel) incorporating into the name the idea of the activity and interest that the students display toward the whole field of biology.

At the monthly meetings papers are read and discussed. Ever so often during the year men prominent in this branch of science have addressed the Club.

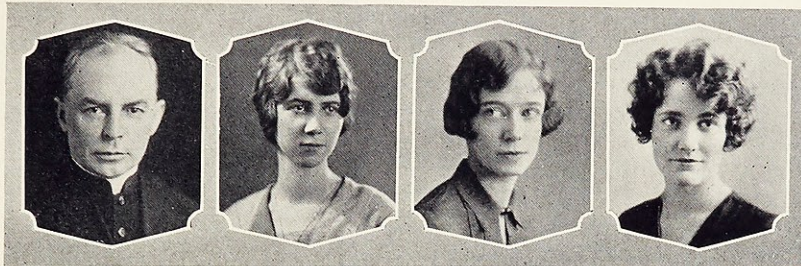
What has seemed most gratifying and has shown that the Club is thoroughly alive is the fact that the members who have graduated come back to the meetings. It shows that the Sigma Sigma Sigma has lived up to its ideals, and has awakened in its members an abiding enthusiasm for the science of biology.



Gartheffner, Hennessey, Burleigh, Ryan, Shuford, Mueller, Farrell, Fellenz, Cummins  
Burke, Lynch, Ryan, Rochow, Gottlob, Day, Drummond, Weis  
Bussman, Gross, Clarke, Blevins, Rabbitt, Weber, Wittrock, DeLisle

Kappa Gamma Pi

1939



Rev. F. V. Corcoran      Catherine Rohan      Thelma Gesell      Gertrude Jolley  
*Moderator and Honor Students from Class of '29*

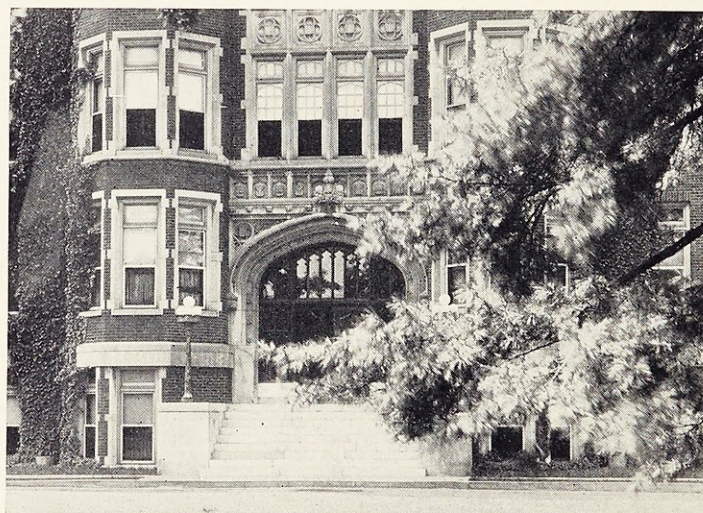
The Kappa Gamma Pi is the National Honor Society having for its members, the alumnae of Catholic women's colleges. The purpose of the organization is to manifest through its members the qualities of Catholic leadership that our colleges are endeavoring to instill into their students. Those who belong to this society are actively engaged in serving the communities in which they live; they are foremost in parish welfare organizations; they are organizing catechism classes in out-of-the-way places; in short, they are doing whatever work they can to prove that they are Catholic leaders.

The Society was organized at Seton Hill, Pennsylvania, by Reverend Doctor F. V. Corcoran, C. M., its Moderator, and by the Deans of various Catholic women's colleges. Only those graduating with honors, that is, a Cum Laude, a Magna Cum Laude, or a Summa Cum Laude, are eligible for membership. Scholastic ability, however, is not the only requisite—to become a member, a girl must have proved herself loyal and active in the affairs of her own school.

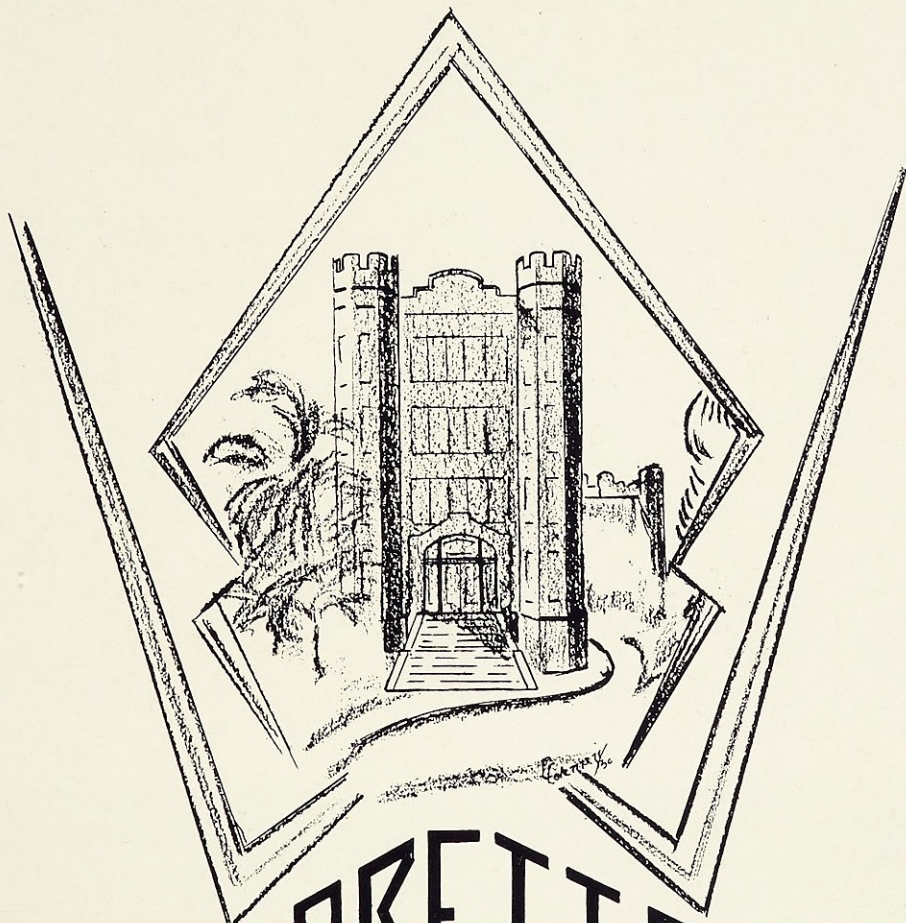


Marta Brown      Edith Glcsemeyer      Cathryn Hummert  
*Members of Kappa Gamma Pi from Class of '28*

*The* LAURETANUM



*Administration Building Entrance*



LORETTO  
FOUNDATION

## Loretto Foundation

1930

"The Loretto Foundation"—how proud we are of this Organization! No Webster girl feels that she is a loyal Lorette until she has become a member. In fact, the Foundation, though young, has become so thoroughly a part of our lives that we are inclined to think that it means just so much to everyone and that everyone is as thoroughly familiar with it as we. Such, however, we know is not the case. Many inquiries come to us daily. Though the Foundation is by no means limited to Webster College, yet, since it had its origin here we feel justified in assuming the privilege of saying a few words about its beginning and its purpose. Our first "Loretto Day" is one of the outstanding features in these pioneer days of our Organization.

Last June, Mother Linus and the Sisters invited all of Webster's former students and graduates to return to the College for a three day Home-Coming celebration. And what a celebration it was! No one will ever forget the wonderful plans and hospitality of the Sisters.

On the third day of this Home-Coming the girls held a business meeting. Their one big point of business was to determine what they, as old girls and graduates, could do to show their loyalty to the Sisters and to help the Sisters—not in appreciation of this lone three day event—but in appreciation of this and all others like it—in fact, for their very education!

The Sisters and girls conferred and on that day, June 9, 1929, "The Loretto Foundation" was formed. The purpose of this Organization is to foster loyalty to the Sisters of Loretto and to further the interests of the Order. To its members is granted the special privilege and honor of joining the Sisters in their work; hence, only close friends and former students are eligible for membership. This June meeting was followed in September by a meeting of the Executive Board of The Loretto Foundation and finally by our first "Loretto Day" on October 13, 1929. Sisters, old and young, hundreds of former students and many, many friends gathered at Webster College. This was a happy reunion, never to be forgotten! The program of



*Benediction on Loretto Day*

## Loretto Foundation

1930

the afternoon included: a business meeting, at which Officers of the Foundation were elected and installed and a tentative Constitution adopted; an address by Reverend D. A. Lord.; Benediction of the Most Blessed Sacrament on the College Campus; and finally, a Tea in the Pink Room at Loretto Hall. All who were enrolled that day departed with a feeling of great pride that they were true and loyal children of the Loretto Sisters.

The year, 1847, marks the opening of Florissant Academy and the first Loretto School in this diocese. To-day there are eighteen parochial schools, two Academies and one College conducted by our Sisters in this diocese. We hope to list each and every present student, former student and graduate of all these twenty-one schools among the members of "The Loretto Foundation." Though they will all be members of the one Organization, at the same time, they will operate in the interval between annual meetings as separate units; that is, we will have a unit at Webster College, one at Loretto Academy in St. Louis, one at Nerinx Hall and one in each Parish where the Parochial School is conducted by our Sisters. It is our hope that the units or the Alumni and Alumnae Associations in the Parishes will become as strong and active as are the Alumnae in the Academies and College.

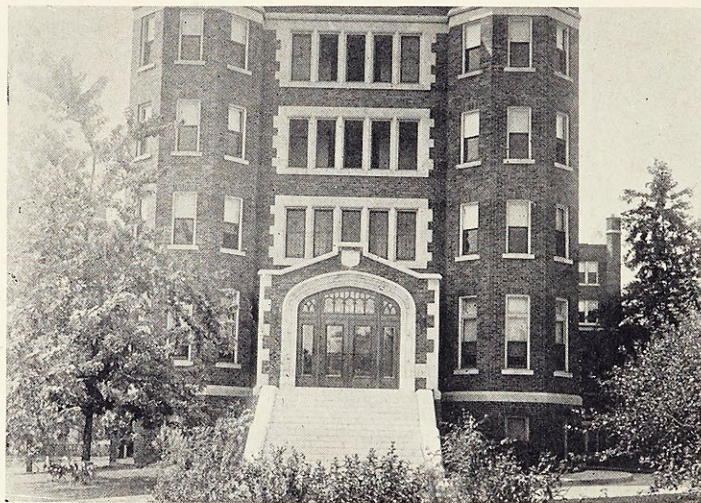
The varying Memberships offer opportunities for the hardest pressed and more comfortably disposed alike to become "Loyal children of our Lady of Loretto." The Organization is growing daily in St. Louis, Webster and outlying districts. When it is sufficiently strong here, units will be formed throughout Missouri and on through the country as far as our Schools and friends carry us.

"Furthering the interests of the Order" means, at present, aiding in carrying off the debt of Loretto Hall of Webster College. However, this will not always be the biggest need. We are simply banding together as former Loretto Students and Friends of the Sisters, and saying that we want to help always wherever we can. "The Loretto Foundation" is our testimony of appreciation and loyalty to our Sisters of Loretto!

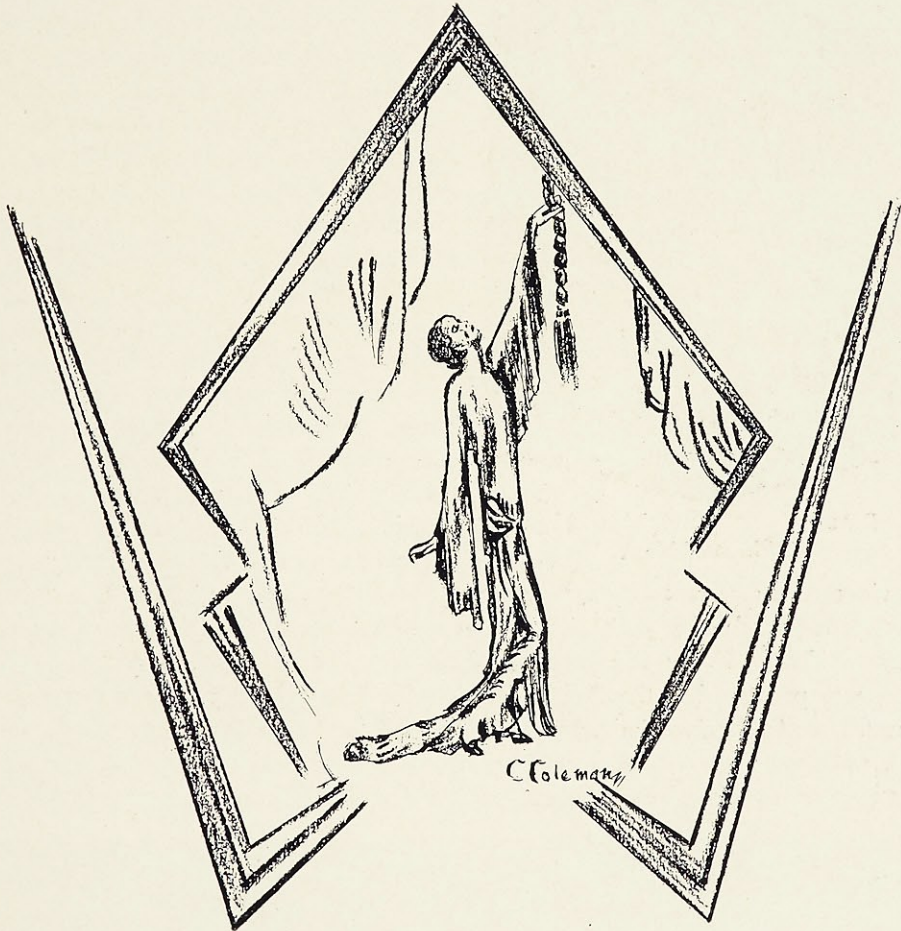


Section of the Crowds on Loretto Day

*The* LAURETANUM



*Main Entrance of Loretto Hall*



ARTS

Dramatics

1930



JANE POOLE MARY HICKMAN  
"Merchant of Venice"

The Dramatic Art Department of Webster College has been keeping pace with the progress of the other departments and during this and the preceding year has made great strides forward. Under the expert direction and coaching of Mrs. Anna McClain Sankey and through the genius of Sister Marie Anthony, whose knowledge of stagecraft makes our settings things of beauty and artistry, the productions of the Loretto Players are becoming synonymous throughout the city for finished work of the highest type.

This year has seen formed in St. Louis, a Dramatic League of the amateur actors, playwrights, and scenic artists of this vicinity. The League serves as a sort of dramatic clearing house and creates a more lively interest and friendly rivalry among the various amateur dramatic organizations. The Loretto Players have taken an active interest in the work of organization and so far have participated in two programs of the Drama League. On the night of November 26, "Lady Fingers", by Glenn Hughes was presented at the Bishop Tuttle Memorial theatre with a cast consisting of Jane Poole, Catherine Cody, Josephine Reddin, and Dorothy Fairall. Later in the season, on January 9, the Players contributed a great deal to the League's success with the presentation of the melodrama, "When the Whirlwind Blows." The plot



A Corner in the Dramatic Art Studio

Dramatics

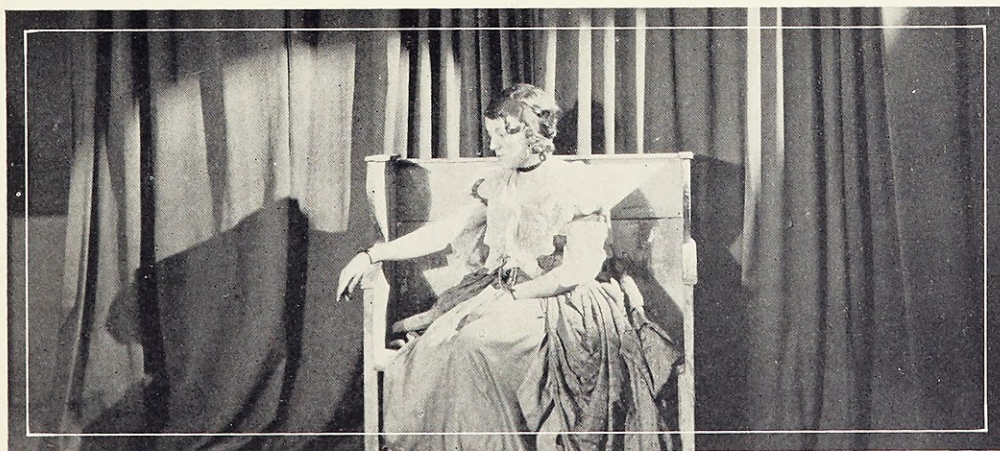
1930

concerns a revolution—where, when, or who doesn't matter. The action concerns three characters: an aristocrat, a spy, and a peasant. Mary Frances Broker, as Madame Androya, gave a fine portrayal of the noblewoman. The part of Anna, Madame Androya's maid and a treacherous spy, was played admirably by Catherine Cody. Josephine Rabbitt had a difficult "character part" which she did exceedingly well, and which had a great deal to do with the success of the play. Thus, through the medium of the Drama League, the members of the Little Theatre of Webster College have had the opportunity to perform on a strange stage, amid new surroundings; and to compete successfully with other amateur dramatic groups.



CLARABELLE MUELLER    CATHERINE CODY  
"Merchant of Venice"

However, the Drama League is not the only outside interest of the Dramatic Department. The St. Louis Art League announced a Little Theatre Movement which was to consist of twelve one act plays to be produced in three separate performances with the intention of making of it an elimination contest for the selection of a play to be sent to New York in May. The participants in this play will compete for the Belasco Cup in the eighth annual National Little Theatre Tournament. The Loretto Players, in recognition of the merit of their performances in the plays presented for



THELMA PAPE  
"Mistress Runaway"

Dramatics

1930

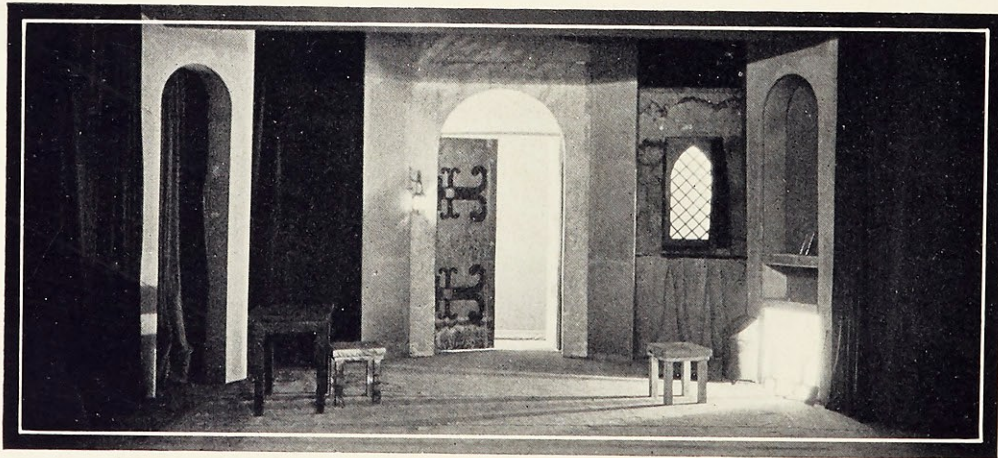


MARY HICKMAN  
As "Narissa"  
"Merchant of Venice"

the Drama League, were honored by an invitation to present two plays by St. Louis authors in the local tournament. Although they did not succeed in capturing the coveted trip to New York for the national competition, the Players gained recognition for their earnest work. The Loretto Players won the popularity prize of one hundred dollars, and also, the literary prize with the presentation of "The Randalis of Virginia," a play of unusual individuality. An additional prize was awarded to Alice Widmer for excellence in acting. The members of the cast were: Alice Widmer, Helen O'Brien, Billie Surprise, and Catherine Geary, who played their parts in the finished fashion of the professional stage. The other play of this tournament, "Obligato," was ably presented by Mary

Hickman, Jane Poole, and Essemena Weinacker. The play was rated sixth in popularity, and fifth in acting. Not only has the Tournament been an inspiration, but it has also encouraged dramatic groups to continue the good work for the advancement of the Little Theatre movement.

There has been given in our own Little Theatre this season, three groups of one act plays. The first were: "Mistress Runaway", a costume play by M. Lefuse; and "Lady Fingers", by Glenn Hughes. The Freshmen had a chance to display their



Stage Setting of "When the Whirlwind Blows"

Dramatics

1930

talents in "Snowed Up with a Duchess", by C. A. Castell; and "Her Victory", by Eleanor Maud Crane. The third group, given by the senior students, included the fantastic "Will O' The Wisp" by Doris Halman, "My Lady's Lace", a Dutch costume play by Edward Knoblock, and "Widows", a delightful play in Cockney dialect by Herbert Swears.

All work in the Dramatic Art Department is concentrated early in the Spring on the culmination of the years work—the Shakespearian play. Last Spring a new plan of selecting the cast was inaugurated. There were "try outs" for the leading parts and at the close of the competition, the cast was selected by the judges. As a result, the leading parts of "The Merchant of Venice" were finely handled. The role of "Shylock" was aptly and artistically portrayed by Alice Widmer; Catherine Cody was charming as "Portia"; Clarabelle Mueller, as "Bassanio", and Josephine Rabbitt as "Antonio" gave convincing interpretations.

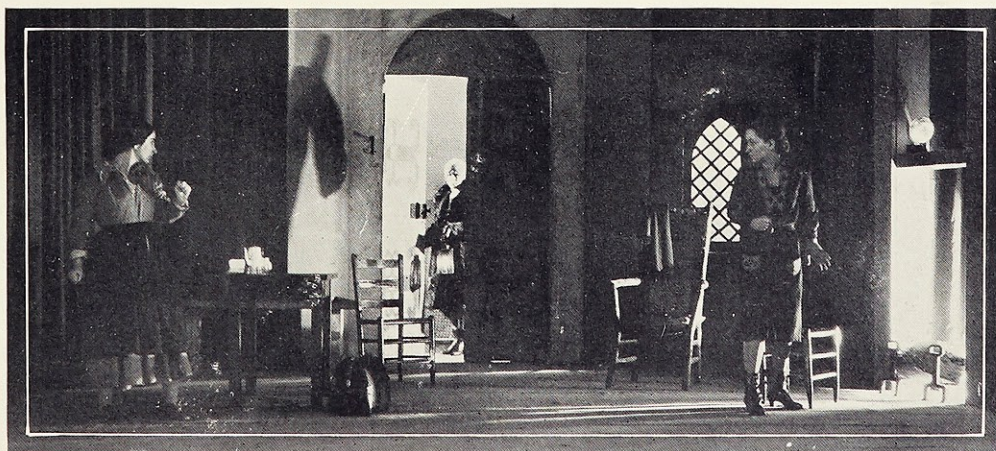
"Twelfth Night" or "What You Will" with its plentitude of good parts and splendid possibilities for dramatic success has been chosen as the annual Shakespearian production for this year. The cast, with few exceptions, has been selected from the Senior Dramatic Class. The old plan of a double cast has again been re-



M. HICKMAN  
Narissa

C. CODY  
Portia

"Merchant of Venice"



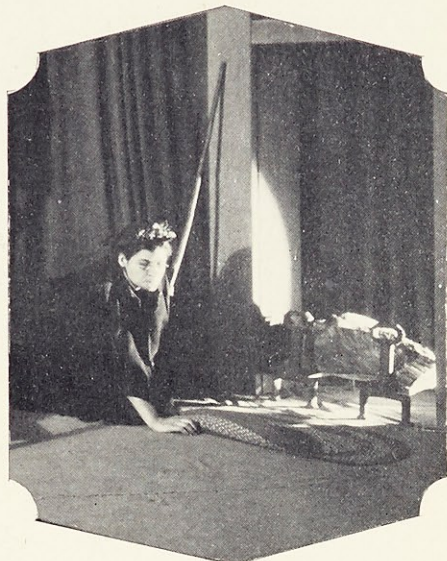
J. RABBITT

M. BROEKER  
"When the Whirlwind Blows"

C. CODY

Dramatics

1930

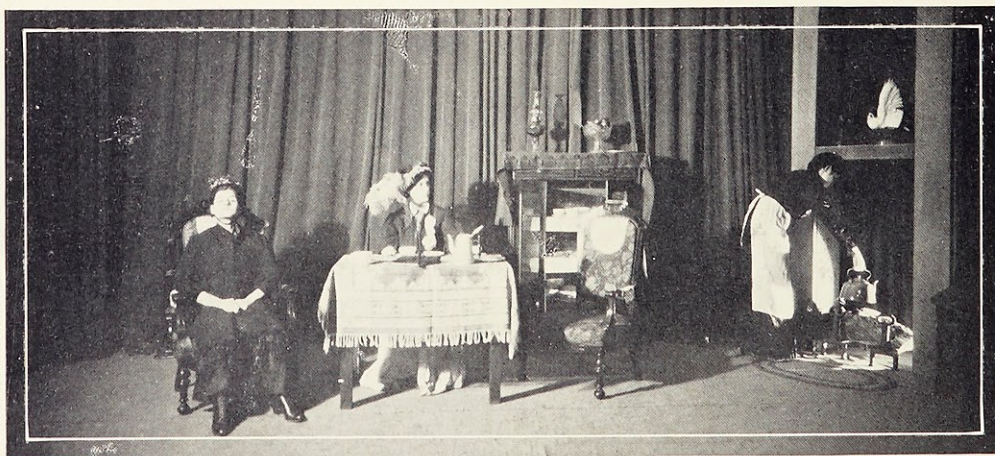


ALICE WIDMER  
"Widows"

vived, and at the two performances of "Twelfth Night" a different cast will be seen each night. This has necessitated the casting of two sets of twins. Much merriment, puzzling, and excitement was caused in the selecting of the girls who were sufficiently alike in appearance and also suited in ability to the part which they were to play. Finally, Mrs. Sankey and Sister Marie Anthony chose Josephine Rabbitt to play "Viola" and Alice Widmer as her twin brother "Sebastian". In the second cast "Viola" is to be played by Helen O'Brien and "Sebastian" to be played by Dorothy Fairall. Catherine Cody and Martha Jane Lenartz will enact the part of the maligned "Mavolio" while Jane Poole and Mary Frances Broecker will play "Olivia." The comedy element which is outstanding in "Twelfth Night" is furnished in the parts of "Sir Andrew Ague-

cheek", played by Clarabelle Mueller and Mary Hickman, and "Sir Toby Belch", played by Catherine Geary and Katherine Bussman. Thelma Pape and Ann Janes will enact the part of the philosophical clown "Feste".

Another interesting event marking the dramatic calendar this season will be a three-act play presented by the Freshman Class. The play, "Mr. Loring's Aunts" has a rather amusing plot. It deals with the antics of two asylum inmates at large in a peaceful household, and two quite sane maiden-ladies who are forced by circum-



ALICE WIDMER

CATHERINE CODY  
"Widows"

JOSEPHINE RABBITT

Dramatics

1939

stances to become temporary residents at the home for the insane. The result is a delightful farce which will literally be a "howling" success.

Undoubtedly the Shakespearian play of this year should be a success, and a fitting culmination to the splendid work done by the Loretto Players in this, the most significant year in the annals of the Dramatic Department of Webster College.

For this has been a significant year. It is not often that a group of amateur actors such as the Loretto Players, have had the opportunity to compete in city wide tournaments such as have been presented this year and to be successful consistently. Through the medium of the Drama League, the Loretto Players appeared on the Odeon stage, and their presentation of "When the Whirlwind Blows" received city-wide commendation. In competing in the Belasco Cup Eliminations the Loretto Players gained recognition for their work and received a popularity prize of one hundred dollars. This success is a worthy tribute to the earnest work of the students, who gave hours of their time to practice, and to the fine direction of Mrs. Sankey, head of the Department, and to the unselfish interest and help of Sister Marie Anthony.



B. SURPRISE  
Gobbo  
A. WIDMER  
Shylock  
"Merchant of Venice"



C. GEARY

K. BUSSMAN  
"My Lady's Lace"

M. HICKMAN

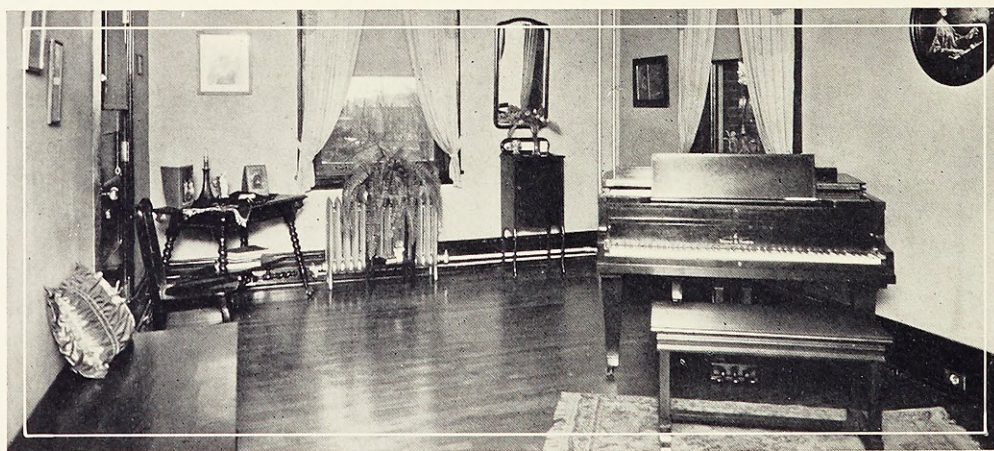
Conservatory of Music

1930

The Loretto Conservatory of Music has kept pace with the broad strides of development made by Webster College. Included in the curriculum of this department are Piano, Voice, Violin, and Pipe Organ Instruction; the History, Appreciation, and Theory of Music; Harmony, Ear Training, Counterpoint, Musical Form, Sight Singing, Ensemble Singing, and Public School Music Methods. Certificates to teach in the State of Missouri are awarded by the Conservatory. It has always been a problem to give the girls practical teaching experience in grade and high schools; hitherto, they have had to content themselves with the giving of private lessons. This year, the opportunity to teach in a nearby parish school presented itself, and the result of the experiment has been so satisfactory that the experiment has now become an established feature in the preparation for the Teacher of Music certificate.

Under the direction of the faculty of the Conservatory, a Choral Club was organized last year. The members of the Club have been heard in several radio programs, and have also recorded four numbers on victrola records. This year, we are particularly proud of our splendid orchestra. On many occasions during the year, the selections of the orchestra have heightened the enjoyment of some play or other entertainment. The music for the dances on May Day was provided by the College Orchestra, which played so charmingly that the dancers could hardly do otherwise than skim the ground lightly and gracefully.

The Faculty of Loretto Conservatory have taken every opportunity to bring the pupil in contact with the great ones in the world of music. This year, Mr. J. E. Brill gave a concert in the auditorium of Webster College. Mr. Brill is a noted violinist, known throughout the Middle West, and has played in the European capitals and taught in the Conservatory of Hanover, Germany. Mr. Willard McGregor, who recently returned from Europe, has also appeared in another recital. The students are regular patrons of the St. Louis Symphony Concerts. In this way is developed a broad and cultural education in the realm of music.



A Studio in the Conservatory

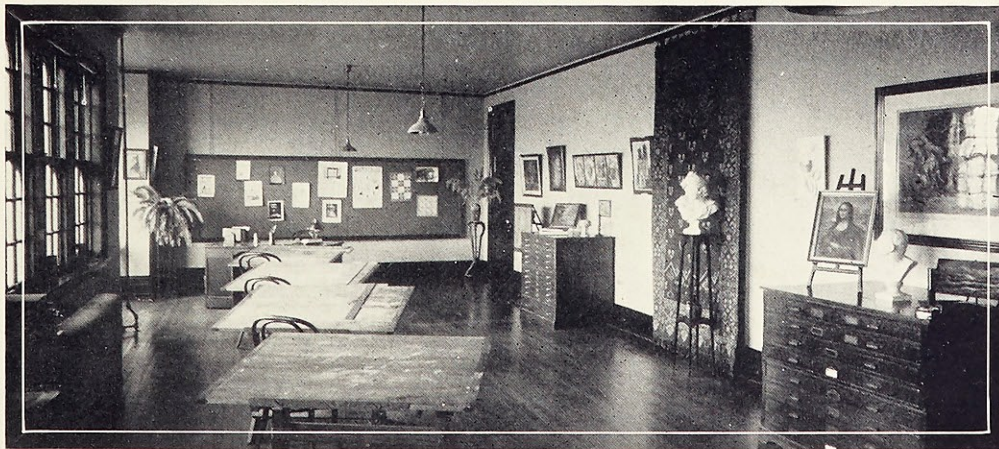
Art Department

1930

You have to go to the third floor before you get a glimpse at the Art Department of Webster College, but once on that floor, you quickly reach a large, airy room, almost completely flanked on one side by windows thru which streams the all important "north light". First you notice the orderly row of drawing desks, some littered with paints and pencils, others cluttered with draughtman's implements, and on one, perhaps, a half finished poster. At one end of the room there is a large "bulletin board" on which are displayed the works of the art students, especially, posters and water colors.

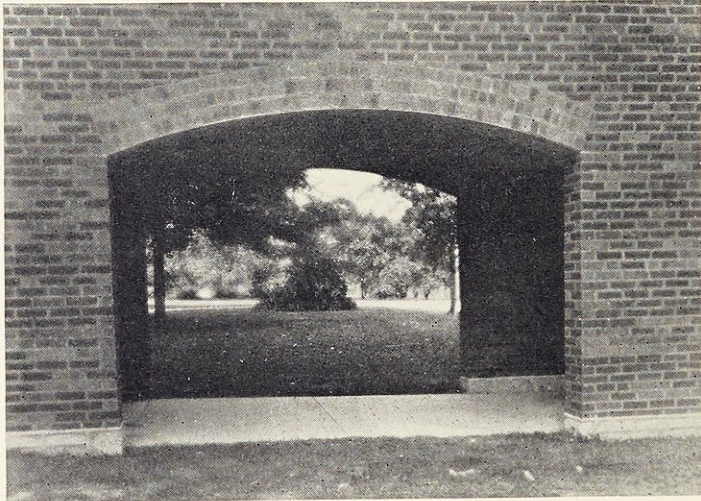
In all corners of the studio there are almost numberless objects to give inspiration and to furnish subjects for many sorts of drawing and painting. In one corner, there are reproductions of many of the finest specimens of Grecian sculpture, notable among them, a figure of Atlas, upholding the world. Vases, jars, and bowls of all sizes, shapes, and colors are placed singly or grouped here and there to offer interesting studies in still life. On the walls there are beautiful copies of the works of great masters; and here and there, are easels, occupied either by such a copied masterpiece, or else, by some half finished work of some student working in oils.

The furnishings of the Art Studio as well as the planned course of instruction are all designed to facilitate and make more enjoyable the study of art. The course has been arranged to bring the students into close contact with the best art of all ages, and to impart a thorough training in drawing, painting, decorative design, poster composition, and fashion designing; for an intelligent and comprehensive study of art engenders a love and appreciation of beauty, offers countless opportunities for cultural enrichment, encourages originality, and stimulates the creative powers of the student.

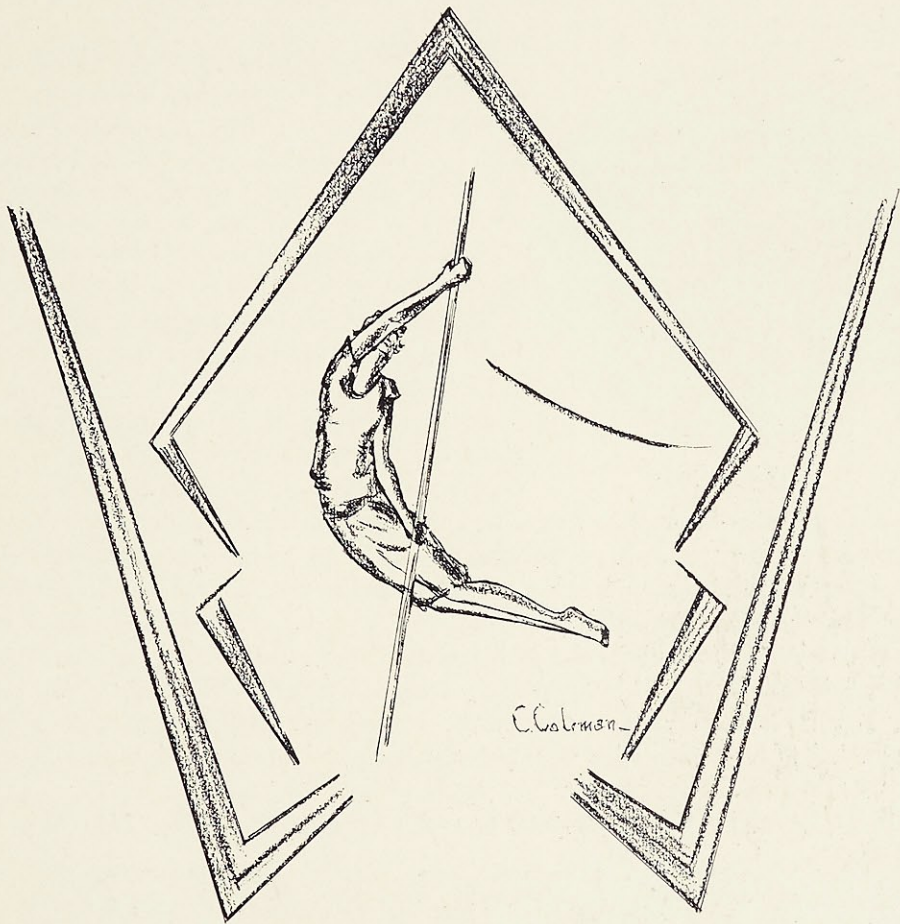


Art Studio

*The* LAURETANUM



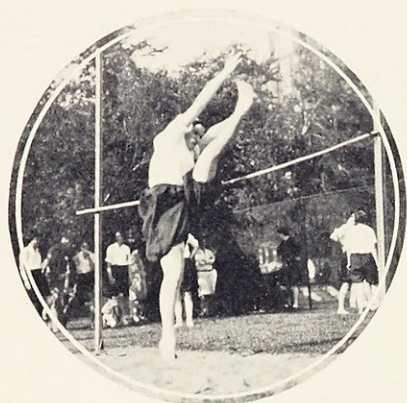
*Looking Through the Arch*



# ATHLETICS

Field Day

1930

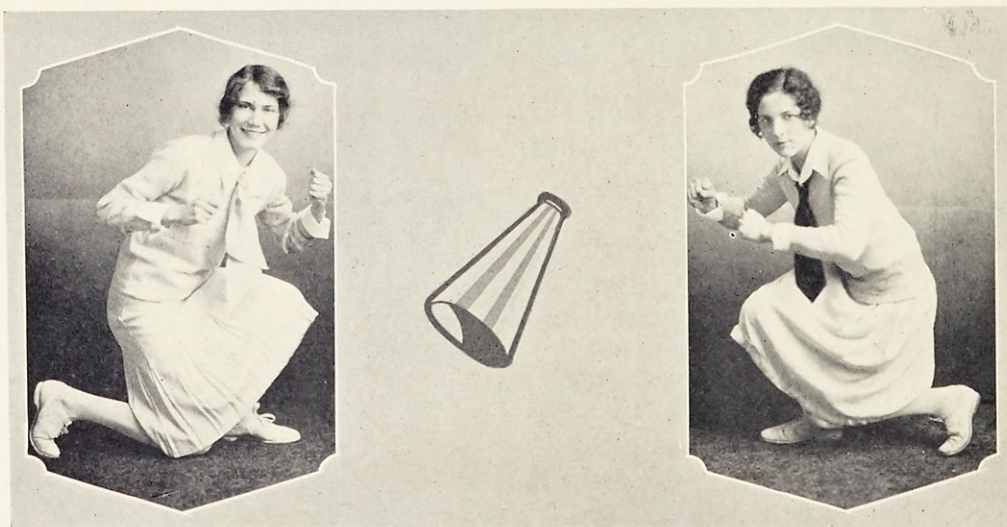


High Jump

Just like all other departments in the College, the Athletic Department has its day, and this day is Field Day. Field Day! These words are as music to those girls of taut trained muscles, who all year have centered their efforts on this day, the culmination of all their training and long hours of practice. This event takes place in May and the long sunny hours of the afternoon are filled with thrillingly interesting contests that afford the participators an opportunity to show their prowess; and are a source of breathless excitement for the spectator. On this day all students, whether or not they are athletically

inclined take a keen interest in sports and even the members of the faculty show their interest by their presence at the track meet. There are many exciting moments when victory seems almost within the grasp of some individual, only to be seized in one last desperate effort by another contestant. Many and varied are the events, but all are attended by the same eager efforts of the athletes and the spontaneous and noisy acclamations by the excited spectators, for the victors. The enthusiastic contestants strain every muscle and concentrate every effort on the attainment of the coveted blue, red or white ribbons, which mean success for themselves and honors for the class which they represent.

This year the events were as exciting and interesting as usual, and the class of



Ann Ryan

Cheer Leaders

Marie Wibracht

Field Day

1930

'31 wrote its name in the annals of Webster's history, for nearly all of the coveted ribbons were pinned on the breathless, excited, and happy girls of this class. Ruth Bergfeld, '31, was outstanding with three victories—the seventy-five yard dash, the standing broad jump, and the shot put. A classmate, Ann Ryan, '31, won the fifty-yard dash, and the high jump resulted in a tie between Ruth and Ann. Again, another member of the class of '31 came forward to earn her laurels when Catherine Sullivan, '31, took first place in the running broad jump. The Freshmen proved that they were not to be totally outdone, when one of their classmates, Dorothy Meyer, '32, succeeded in capturing first place in two events—the basket ball throw and the baseball throw.



The Finish

The Spring of 1929 was a very rainy one and on this account the tennis tournament was delayed by the inclement weather until the afternoon of Field Day. As a result, the finals were played up to approximately half an hour before the banquet and the last gleaming rays of the setting sun saw Dorothy Walsh, '31, proclaimed the tennis champion of Webster College.

This past year marked the inauguration of a new event in the history of the College, the Athletic Association Banquet, which is now of annual occurrence. Not only were the participants of the track meet present at the banquet, but also many of the spectators, those girls who are interested in the Athletic Department of the school.



D. Bender, E. Weinacker, E. O'Malley, E. Simon, J. Reddin, B. Marshall, T. Gesell  
Following the Trails at Osage Country Club

## Minor Sports

1930



Catherine Sullivan

Horseback riding is, as it has been in the past, very popular. The Osage trails have their lure for every Websterite, for it is here that she rides during leisure hours and enjoys the surrounding country.

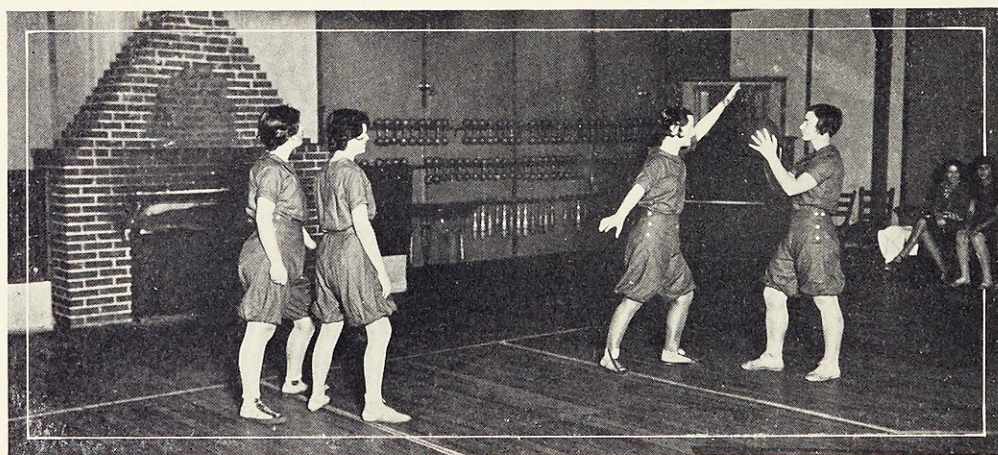
Swimming ranks high among the best liked sports at Webster. The students have the privilege of using the pool at the Town Club, and many afternoons and Saturdays are spent there by those interested in this sport.

Winter was very generous with her zero weather, and to those who love the great outdoors, the lagoons afforded many opportunities for skating. For those to whom the cold weather was not so attractive, there was the Winter Garden. The number of girls that have

gained points towards awards, in skating, manifests the popularity of this sport.

On one particular evening in November, Idle Hour was the scene of a very interesting and highly important event. This was the night of the volley ball tournament, the first big athletic event of the year. The Juniors on the point of being eliminated, came back and won game after game, only to lose in the deciding game to their sister team, the Freshmen. It has been a long time since a Freshman volley ball team has won the championship and they deserve a great deal of praise.

"Strike three, you're out!" yelled the umpire, thus ending the third and deciding baseball game, which gave last year's Sophomore team the championship and more points towards the class award of the year. This was the second year that there had been organized class teams in baseball, and if the enthusiasm shown last year continues, baseball will undoubtedly become a lasting and popular activity. Hiking and tennis are also means of gaining points towards athletic awards.



Basketball Practice

## Basket Ball

1939

Webster's athletic enthusiasm reached its climax in the inter-class basket ball tournament this year, when many closely fought games were won by mere margins.

The first game of the tournament brought excited and anticipating onlookers to Idle Hour, to see their favorite team capture the victory. The Sophomores succeeded in downing the Freshmen, and inspired by their first victory, they played each game with fresh spirit, and finally, won the championship. The Junior team displayed its skill in the games against the Sophomores and Freshmen; but the Frosh team won the runner-up position for the championship. The final game of the tournament was the most exciting the College has witnessed. "Come on, Freshies," and, "Hop on 'em, Sophs" were the cries that rang through Idle Hour as the teams battled for supremacy to win honor for their particular class.

From the various class teams, a big team was selected. The members of this team upheld Webster's name and fought for her honor in the different outside games which were scheduled during the year.

Acquaintances and friendships were once more renewed when the Alumnae and the College turned out in large numbers for the thrilling game between the determined Alumnae players and the confident College girls. This is always one of the most interesting games of the year. The "old girls" come back to Webster, don gym clothes, and practice faithfully; and then, on the big night, play the College team of the year. The Alumnae cheers on their team, and the College theirs; but it is all very good natured rivalry, for no matter what the result of the contest—Webster wins, either College or Alumnae.

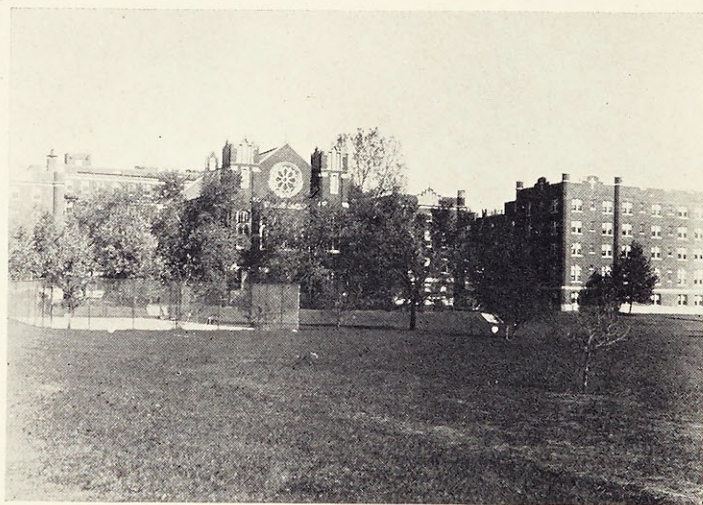


A. Widmer      Lorna Rehagen

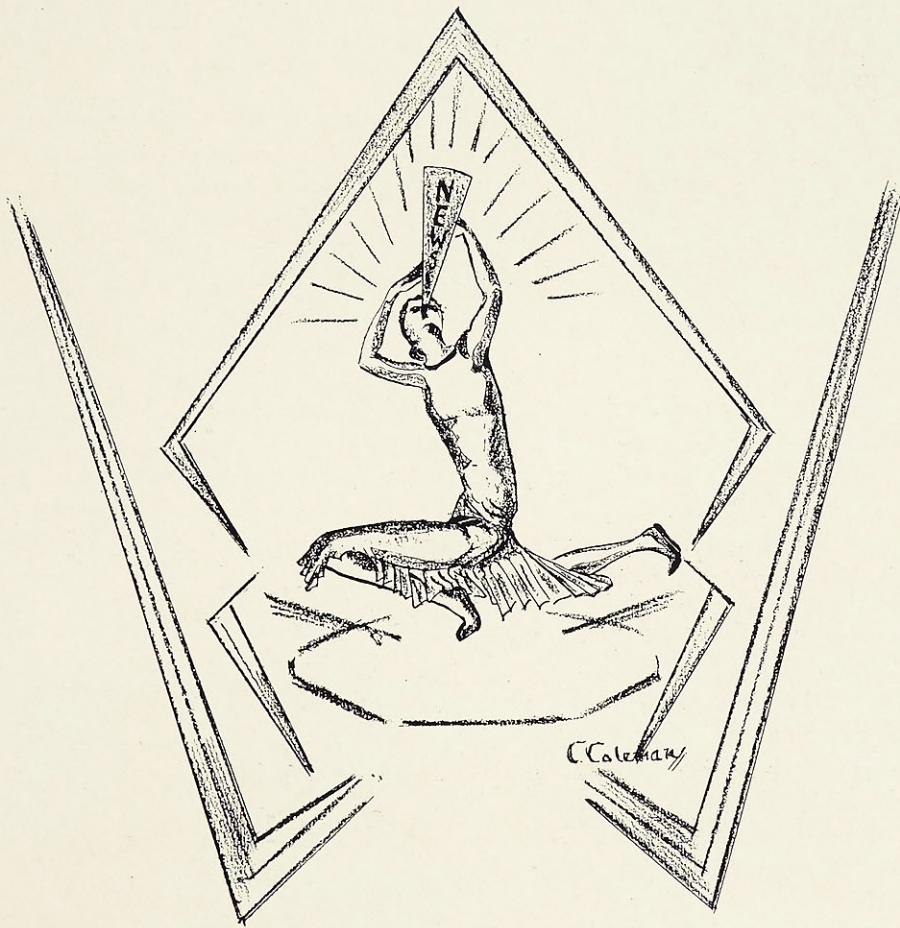


The Toss-up

*The* LAURETANUM

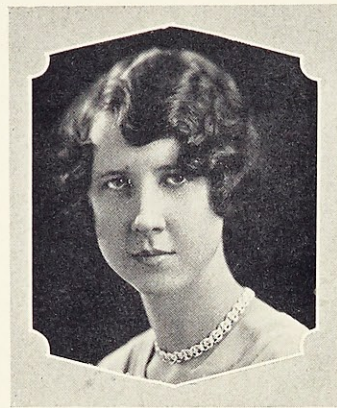


A View of the Campus



PUBLICATONS

The Web



Erline Strothkamp

ERLINE STROTHKAMP..... *Editor*  
 MARGARET DELISLE..... *Exchange Editor*  
 EUGENIA BOCK..... *Business Manager*  
 ALICE WIDMER..... *Athletic and Dramatic Editor*

The Web, which is the student newspaper of the College, is the youngest of its publications. It is published bi-monthly, and its purpose is to keep the student-body in touch with all the current activities of the College. This newspaper made its first appearance six years ago, and it has already reached what we may justly call its maturity.

The first issues of the Web were published on mimeographed sheets at irregular intervals, and contained news of the intervening two or three weeks. During the second year, twelve copies appeared, and these were PRINTED copies. The expense of printing was defrayed by bridge parties and sandwich sales. As the third year of its existence passed more improvements were made, and by the time its fourth year was completed, it was able to boast of real headlines and decks, and pages that were well balanced.

The beginning of the fifth year found the Web a four-columned paper, appearing regularly, every two weeks, and paying for itself by student subscriptions and advertisement. But Webster was growing, the happenings there were becoming more interesting and more varied, and in order to give sufficient publicity to its numerous events, it was deemed necessary, at the beginning of the second semester of its fifth year, to add to the Web another column, and also to add to the depth of the columns.

The Web was six years old last September, and in celebration of its

Margaret DeLisle  
 Alice Widmer                      Eugenia Bock



The Web



FRANCES ERNST.....Circulation Manager  
ALICE CLARKE..... Editorials  
MARY ROSE BURKE..... Assistant Editor

added year, it appeared with large banner heads, a greater variety of type in its headlines, and earmarkers.

Again, it began to outgrow its space, and in January, 1930, it was necessary to add two more inches to the length of the columns. It is, at the present time, as large as the standard size newspaper.



The Web

To edit a student publication is indeed a rare privilege: yet, one that carries with it sleepless nights, disappointments, and even sorrows. But what are these compared to the joys and the satisfaction that it brings, to say nothing of the invaluable experience one derives from it?

Of course, the success of any publication depends primarily upon the caliber of its staff, and it is to the staff of 1929-1930 that we owe our appreciation and gratitude. The staff consists of seven members: Editor-in-Chief, Assistant Editor, Business Manager, Circulation Manager, Exchange Editor, Editorial Writer and Athletic and Dramatic Editor.

Frances Ernst  
Alice Clarke                      Mary Rose Burke

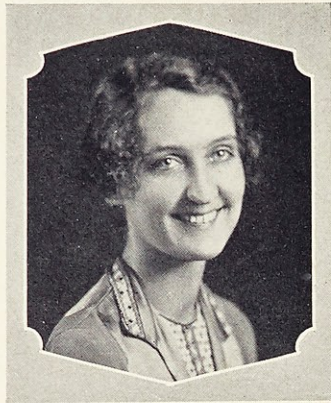


Although the Web staff is composed exclusively of upperclassmen, it owes much of its success to the Journalism Class, whose talented members have written interesting news articles, clever feature stories and poems.

This, then, is a summary of the Web's history and achievements, and one that we are justly proud of. And so, the tried and true proverb concerning dark clouds with silver linings has again proved its veracity.

The Loretine

1930



Catherine Cody

CATHERINE CODY..... Editor  
 NEVA DAILY.....Circulation Manager  
 LUCYLE RAPILLARD.....Near and Far  
 ROSEMARY BRENNAN.....Book Review Editor

*The Loretine*, published under the guidance of the Sisters of Loretto-at-the Foot of the Cross, needs no introduction to friends of Webster College. This quarterly which is our literary publication is as old as the school itself; in fact, it antedates the school, for it originated in 1907. Its birthplace was Kansas City, Missouri, and it was known then as "Small Talk." For many years it was lovingly fostered by

Sister Louise whose dream came true when this little magazine developed into *The Loretine*, a literary review of goodly proportions published at first five, then four times a year. Since the day the first *Loretine* was published the editors have striven to uphold the literary ideals and high standards of Sister Louise.

Now, although Webster College is still young in terms of years, *The Loretine* ranks with the quarterlies of the oldest Catholic Schools in America. Our book receives favorable and—just to prove we're making progress—some unfavorable mention in the exchange departments of the famous school magazines.

As this is an age of specialization *The Loretine* maintaining a modern tone, adopted the plan of specialized issues several years ago. These special numbers have won for us that much-desired praise of being "different." And other magazines have given us that sincerest flattery—imitation.

This year there has been a Short Story number edited by the Alumnae and a Drama number by the students. We attempted to show in the latter issue that we have an interest in all forms

Neva Daily  
 Lucyle Rapillard      Rosemary Brennan



The Loretine

1930

BERNICE WOLFF.....Business Manager  
 JOSEPHINE RABBITT.....Exchange Editor  
 ROSEMARY HYNES.....Art Editor  
 STELLA CAVANAUGH.....Just Among Ourselves



Bernice Wolff

and phases of the Drama. We considered Drama from the perfect Greek examples down to the lowly talkies.

A new department has been added this year. It is "Book Notes" and we believe that it will live and continue to improve along with our old friends "Near and Far" and "Just Among Ourselves." "Near and Far with the Old Girls" has proven itself to be a real delight to the Alumnae. "Just Among Ourselves" is a record of the social functions, educational activities, faculty news, class elections, and the work of the student governing body, the Student Council.

The purpose of our present *Loretine* is to show the world in a concrete way, the ability the Webster girls have in literary lines, in verse, essay, short story, and book review. The book also brings out and helps to develop talent, which a girl might have in this field and encourages her to write bigger and better articles because the fact that they will be published is an incentive to greater effort.

Stella Cavanaugh  
 Rosemary Hynes      Josephine Rabbitt



The arrival of *The Loretine* is eagerly awaited by every member of the College, Alumnae, and by every other friend of the school.

We are proud of our College quarterly, we are happy in its success and we have great hopes that its success will continue and that the future students of Webster College will realize the importance of their trust and never break faith with Sister Louise.

We Websterites proclaim *The Loretine*, the foremost literary publication, and we recommend it for its originality, variety, and value.

The Lauretanum

1930



Orient Weis

ORIENT WEIS.....Editor  
CAROL COLEMAN.....Art Editor  
NEVA DAILY.....Advertising Manager

Why a Year Book? The most cogent argument that presents itself is the fact that an Annual is a graphic record of the progress that the school has made during the year. This year Webster College has forged ahead. The past year has witnessed the establishment and activity of the LORETTO FOUNDATION, which has become a very real and able aid to the College. Outstanding among her

achievements of this past year is the remarkable showing of the Webster College Dramatic Department. In the city-wide dramatic tournament, the Loretto Players were given the Second Award; one of the individual acting awards was also merited by one of the Players. One reads of these successes in the newspapers, but the newspapers are soon cast aside, and memories of interesting events become hazy. The Year Book, however, takes up the thread of advancement and places in permanent form, the conquests of the college year.

Who has heard of Webster College? The fame of a College is in a limited sense, a measure of its progress. Therefore it is of interest to the student to put his College before the public eye, and a year book is one means of doing this. During the past few years, the Lauretanum has been entered in the competition for honors, with other Year Books from all parts of the country. So far, one Webster College Annual has been listed among "the Pacemakers" and another has received "First Honors." By reaching this high standard, the Lauretanum is placed before the country as a first class school publication, and is it not, in its own way, a splendid "advertisement" for the school?

It is, moreover, the book of the



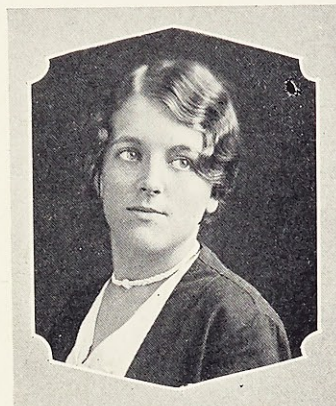
Carol Coleman

Neva Daily

The Lauretanum

1930

THELMA PAPE.....Business Manager  
ALICE CLARKE.....Associate Editor  
JOSEPHINE RABBITT.....Circulation Manager



Thelma Pape

students themselves, the record of the events of the busy year in which they have been intimately concerned. After the first wild turning of pages to find this or that picture, and after the usual exclamations of "Oh, here I am!" "Did you ever see such an awful picture?" the girls will invariably turn to the very first page to begin a systematic survey of the book. Woe unto the staff if the book is not a true representation of the foregoing year. Every detail must be accurate, for those who read are also those who have lived the events recorded. The students appreciate an artistic and beautiful interpretation of their life at the College and are the first to commend the toil-worn staff if their work has been well done.

We are hoping to give the girls at school a printed symbol of what life at Webster College has meant to them and to us—moments of exaltation and occasions of

Alice Clarke

Josephine Rabbitt



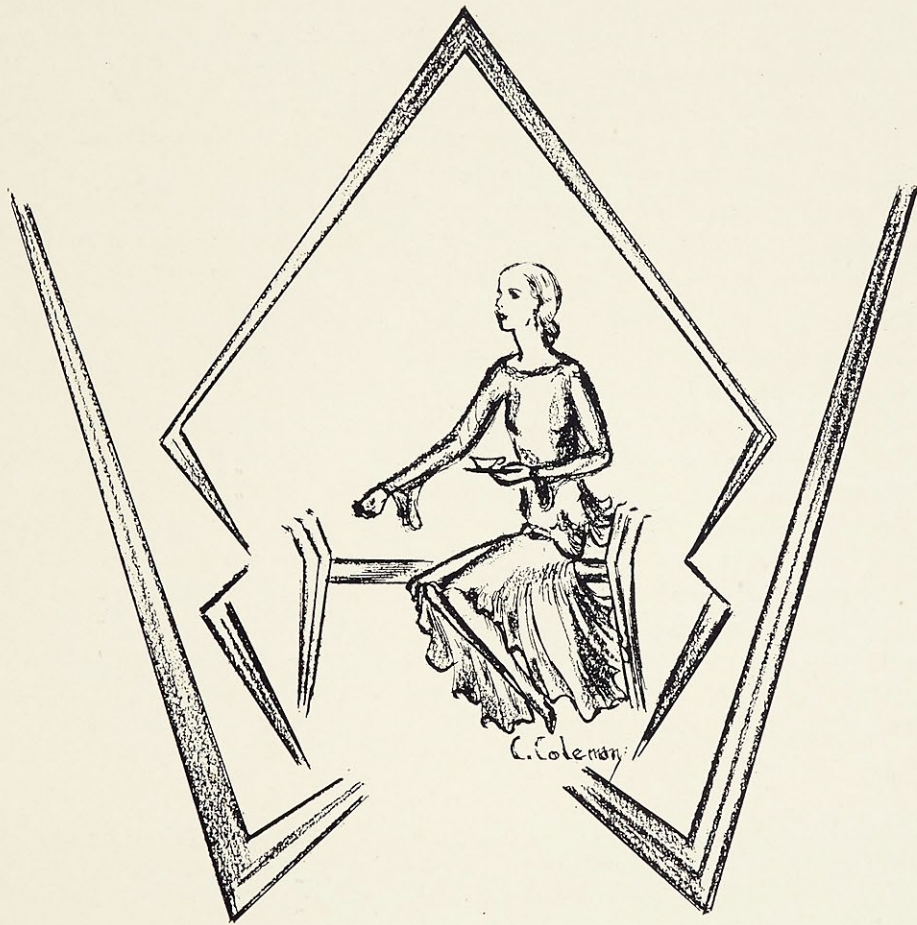
achievement are inscribed on the pages of the Lauretanum; the happy laughter-laden moments, the high hopes, the disappointments, perhaps; all the phases of our school day world are there written down so that some of our cherished experiences may be recorded for ourselves and passed on to others.

The College Annual is a tangible and artistic proof of the progress the school has made. It is an instrument which may be used to spread knowledge of and interest in the school. In compiling this 1930 Lauretanum, the desire of the staff has been to edit a book that would be a worthy successor to the previous Webster Annuals, and a symbol of Webster's advancement. If this portrayal is received with appreciation, we shall be pleased; and if our year's labor will bring added laurels to Webster College, we shall be repaid.

# *The* LAURETANUM

*STUDENT LIFE—It is the training which enables the student to successfully take the helm in the craft of life, confident in her own abilities, sure in her contacts with others, and certain of her course towards success.*





SOCIAL

Dances

1930

The Fall dance marks the opening of the social season at Webster College. The 1929 Fall dance was held on November 8th, in the Ivory Room of Hotel Jefferson. The Student Council assumes charge of the Fall dance and proved to be very adept in managing an affair of this nature, judging from the many favorable comments of those who attended. The crowded floor gave evidence that the splendid dance music was not lost on an unappreciative assemblage. It was gratifying to see a large attendance of Freshmen. The Fall dance introduces the Freshmen to social life at Webster and to see such wholehearted support and enthusiastic cooperation from them, speaks well for the success of future dances.

The Spring dance, held on May 10th in the Palm Room of Hotel Chase, had an advantage on the Fall dance in that it occurred at the psychological moment when young, aspiring students yearn for some form of relaxation from the strain of too much mental labor. Also, it is the last opportunity for a good time before they all depart for their homes. So it is no wonder that there were so many happy, smiling faces there, evidence of the very congenial crowd which attended the last of the three dances which are sponsored annually by Webster College. Hyman Feldman's orchestra furnished music that charmed the dancers, and which was so arranged that for the first time the program of ten dances and three extras was completed. The dance was overflowing with pep and good times. When the hour of twelve told that the dance was at an end, it was with reluctance that the girls and their escorts left the ball-room. Much credit is due to the Junior Class in whose hands lay the management of the Spring dance.



Another View of the Prom

## The Prom

1930

The Gold Room of the Hotel Jefferson was filled with beautifully gowned young ladies and "tuxedoed" young men, on Thursday evening, February 13, the night of Webster's Prom. The students had planned for weeks to make the Prom the loveliest affair that the College had ever sponsored. The dreams of the heralded event materialized and the reality excelled the expectations of the students by a wide margin.

The tables, adorned with pink roses, were arranged in a semi-circle around the spacious room. The favors, cunning jewel boxes bearing the College seal, were placed around the tables. Dinner was served at eight o'clock and thus the Prom began. There was dancing between the courses and after the dinner.

The Prom was marked from beginning to end by a tone of formal elegance. The room itself, the graceful balcony surrounding it, the soft lights from crystal spangled chandeliers, all added a bit of beauty to the occasion. But a beautiful room alone could never make a Prom. It is the contagious spirit of youth that gives life and color to the surroundings, and fascinates the beholder. At Webster's Prom, girls, lately downcast by the burden of examinations, on this night, laid aside their worries with relief, and with spontaneous gaiety, danced until midnight. The scintillating lights, colorful gowns, and gracefully moving couples made a picture that words fail to describe. The loveliness of the Prom was a fitting result of the many hours of work spent on it.

The chaperones were: Mr. and Mrs. T. A. Quirk, Mr. and Mrs. J. P. Coakley, Mr. and Mrs. J. L. Brennan, Mr. and Mrs. J. Weiler, and Mr. and Mrs. Rosenthal.

At the stroke of twelve the lights grew dim, the music became softer, strains of "Goodnight" echoed through the air. Webster's Prom of 1930 had come to an end.



The Prom of 1930

Banquets

1930



Christmas Banquet

Important among the various social affairs at Webster College are the three annual banquets: the Christmas Banquet, the Athletic Association Banquet, and the June Banquet.

The Christmas Banquet is one of the jolliest events of the college year, and comes just before the Christmas holidays. It is of special importance to the Seniors, for on this gala evening in December, they receive their pins. A charming Christmas party always follows the banquet.

The Athletic Association Banquet is held at the end of May, and the highlight of this event is the awarding of letters and other trophies, won for athletic prowess during the past year.

Last of all comes the June Banquet which takes place shortly before Commencement. It is, perhaps, the loveliest of the three banquets of the year; and certainly, the most formal.



Christmas Party

The St. Louis University Prom

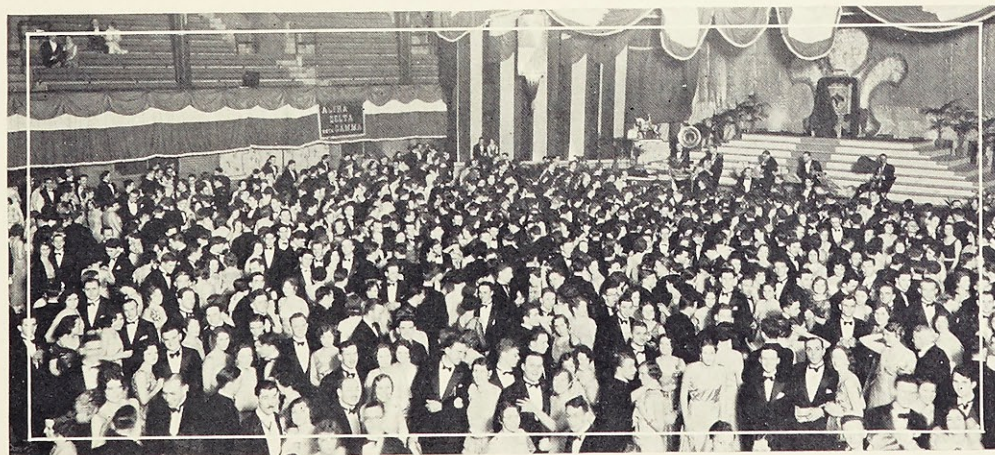
1930



Webster's Prom Maid

The St. Louis University Student Conclave Prom has again become just the memory of a wonderful evening. The Prom was held April twenty-fourth, in the Gymnasium, which was transformed for this occasion into the brilliant, colorful setting of an Oriental Kingdom. The floor was somewhat crowded, since never before had such an enormous, merry-making throng graced the Prom.

The dance was a program affair, and at the fifth dance, two pages announced the arrival of the maids and queen of the Billikens for the oncoming year. Miss Margaret Mudd, the retiring queen led the procession. The maids and their escorts were next in line, among whom was our own lovely, stately Margaret Vollet. Finally, Miss Julia Maloney, the 1930 Queen, entered and made her way to the throne.



St. Louis U. Prom

May Day

1930



Gertrude Jolly  
Retiring Queen

According to the lovely old custom, Webster College each year holds a May Day festival. On last May Day, the weather was perfect, for azure skies contrasted with a brilliant sun, that broadly beamed down upon the festivities. On one part of the rear campus, a dainty throne had been erected with a background of trellises, entwined with flowers. This and the May-pole with its gay streamers fluttering in the breeze, were the only intimation that the crowds of early spectators had, of the gala scene to come. As the time for the ceremony approached, the campus became more thickly dotted with groups, laughing and talking, but ever watchful for the beginning of the afternoon's event.

Then came a hush, for strains of music came from somewhere; and everyone hurried forward to secure a vantage point from which to view the procession; someone called, "Here comes the first maid!" And indeed, there she came, only to be followed by seven other maids, all attired in the beautiful pastel shades of spring, carried out in silks or tulle; and carrying the prim little bouquets in lace paper frills that remind us of grandmother's day. One by one, the maids came down the stone steps that lead from the upper terrace of the campus to the lower, and took their way across the smooth green lawn, and stationed themselves on either side of the still vacant throne. Following the last maid, came Gertrude Jolley, the retiring queen, gowned in white lace, soft and full.

Another hush—and then a murmur of admiration arose from the crowd as Margaret Vollet, the queen to be, appeared in view, preceded by the little crown



Catherine Hazel, Marie Reynolds, Catherine Cody, Theresa Shea, Margaret Vollet  
Gertrude Jolley, Juanita Abell, Dorrit Barnicle, Adelaide Murphy, Carol Emge

May Day

1930

bearer. Our queen naturally chose white for her garb too, to conform to the traditional costume of the ruler of May fetes. The graceful, simple lines of the heavy white silk which she wore, added much of dignity and majesty and transformed just "our Peg" into "Queen Peg."

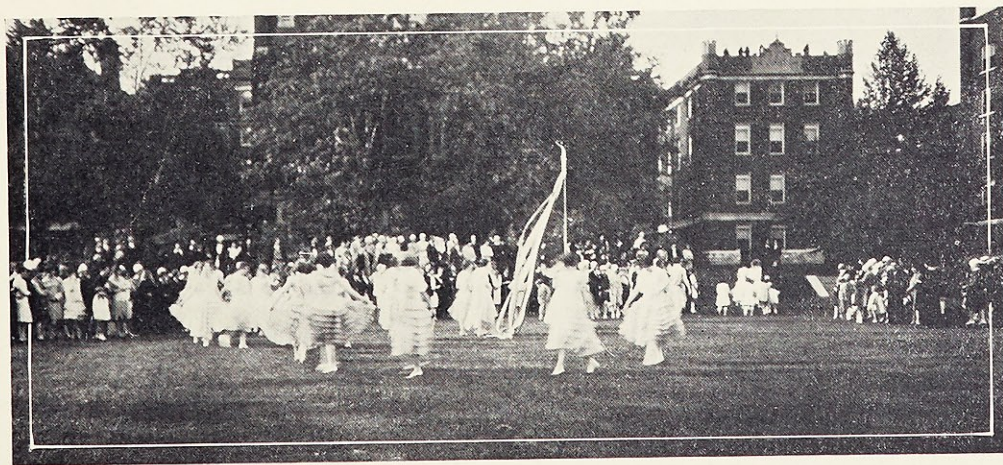
Just before the throne, the retiring queen took the green crown from the cushion upon which it lay, and transferred it to the blonde locks of the new queen, who ascended the steps to her throne, seated herself, and then surveyed her court for the first time in her official capacity. The Queen and those grouped about her throne "held it" for a short time while cameras ground and clicked.



Margaret Vollet  
*Crowning of the Queen*

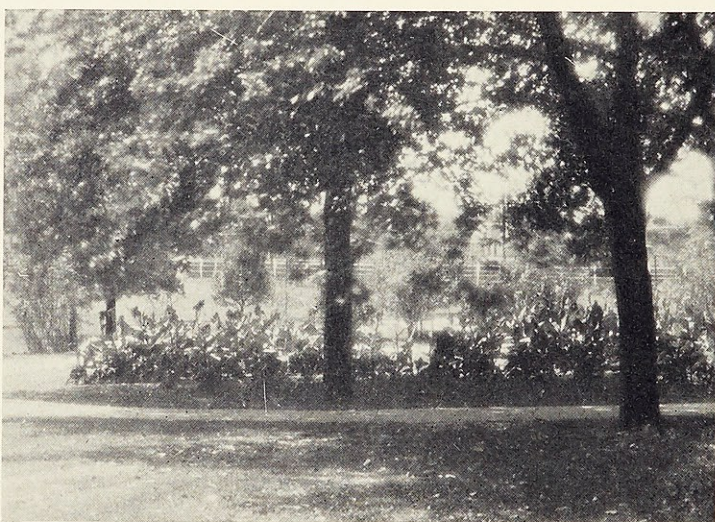
Suddenly the glances of the spectators were caught by a merry, colorful group of girls, who danced and tripped their way across the lawn, their dainty, bouffant costumes and ballet slippers proclaimed them the official dancers of the court. They took their places about the May-pole, and each one with a bright hued streamer in her hand, wound in and out in the graceful movements of the May-pole dance, at the same time, skillfully wrapping the pole with the many colored ribbons. Other entertainment followed this dance, after which, the Queen with her retinue retired, just as the red streaks in the west warned us that the jolly old sun could tarry no longer at our May Fete, and thus closed the annual May Day of nineteen-twenty-nine.

The maids and the classes they represented were: Freshmen Maid—Carol Emge; Sophomore Maid—Adelaide Murphy; Junior Maids—Dorrit Barnicle, Catherine Cody; Senior Maids—Catherine Hazel, Marie Reynolds; Alumnae Maids—Theresa Shea, Juanita Abell, both of whom are former May Queens.

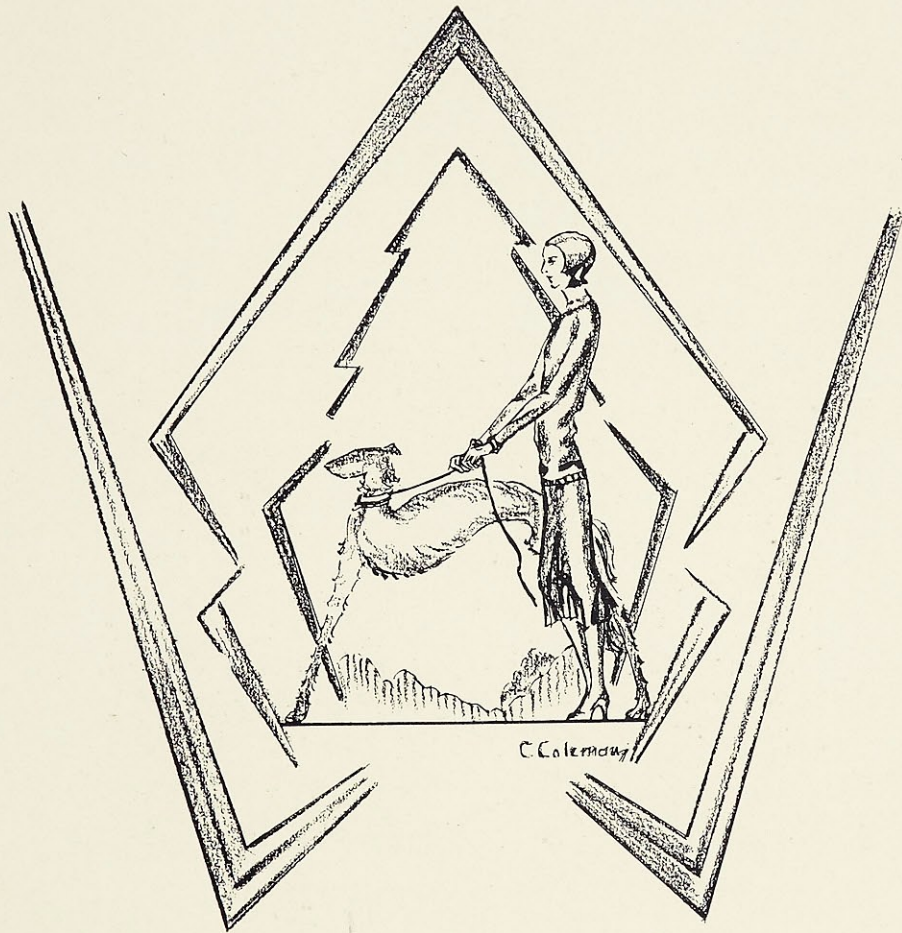


*May Pole Dancers*

*The* LAURETANUM



*A Favorite Place to Stroll*



SNAPS

The LAURETANUM



Queen of 1927  
Maypole Dancers

Retiring Queen  
Queen of 1926  
May Queen and Part of Her Court

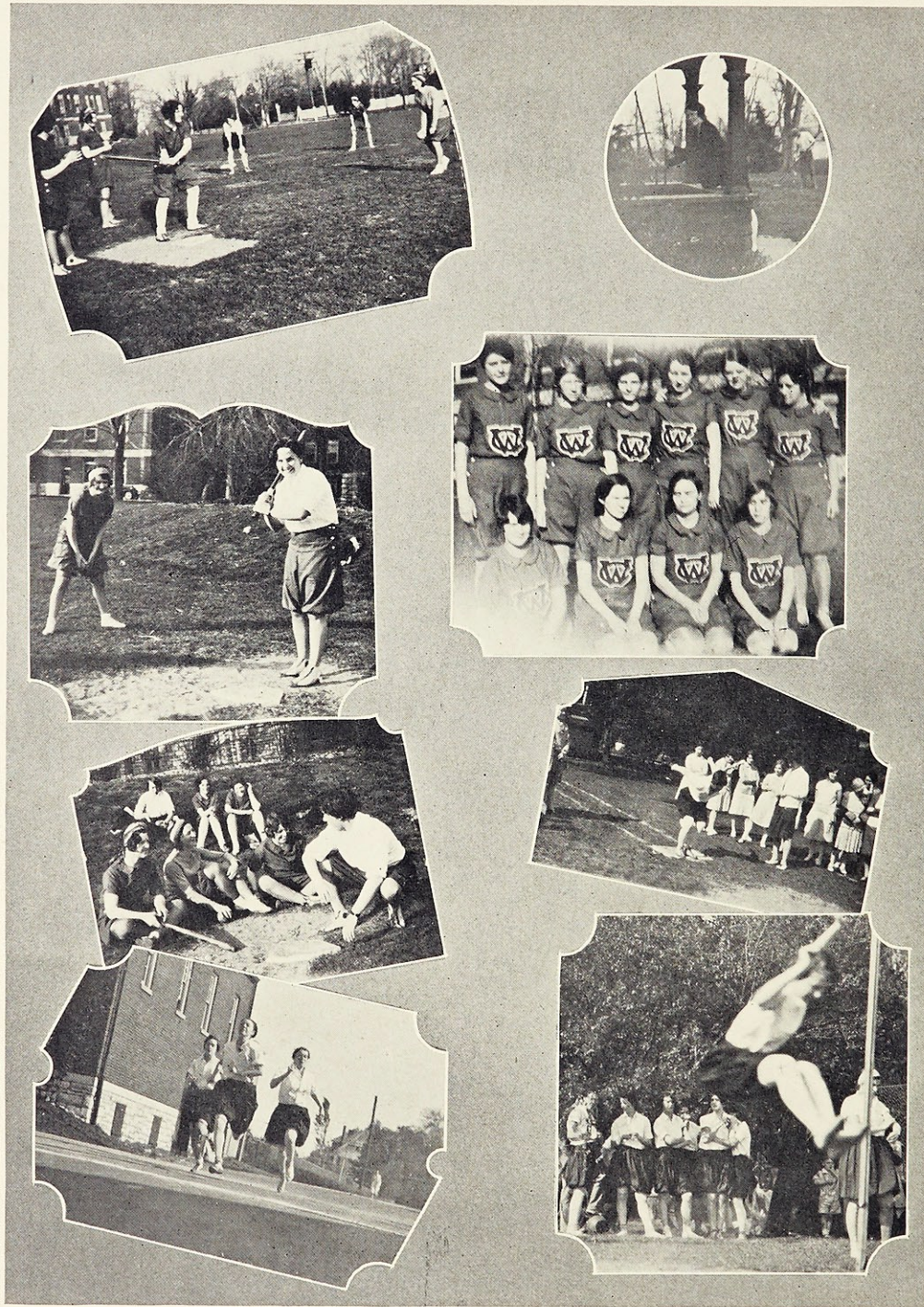
The LAURETANUM



Queen of 1926  
Planting of the Ivy

The May Queen  
Sodality May Day

Entrance of Queen



Batter Up!

Strike One!

Skull Practice  
Fifty Yard Dash

At the Well

Basket Ball Squad

Standing Broad Jump  
Running Broad Jump

The LAURETANUM



On Their Way

Telling Time in an Old Fashioned Way

After Classes

Start of the Relay

A Closeup

Who's Been Spilling that Ink?

Cheer Leaders in Action

The Three Graces

The LAURETANUM



Gimme!

Spring Day

Jacob's Ladder

An Unusual Point of View

Collegiates!

Cheer Leaders

Up and Over!

Where Are You Going, My Pretty Maids?

The LAURETANUM



That Boarding School Reach

Spring Day

Back to the Farm

Three Little Maids from School

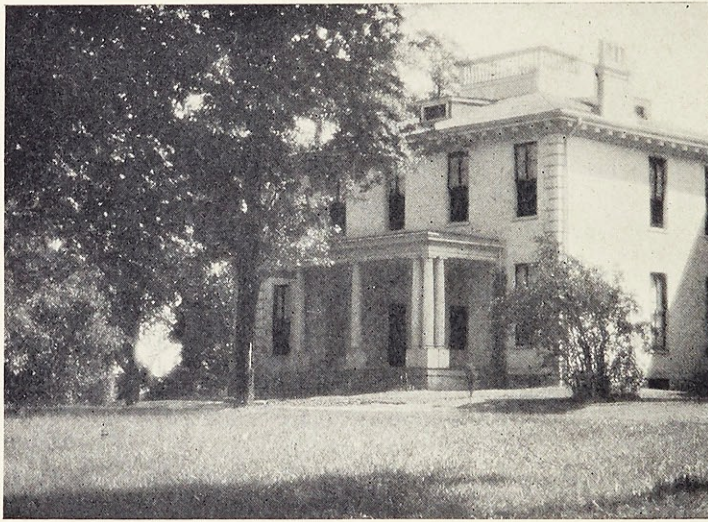
The Bread Line

With Apologies to Rodin

A Real Hiding Place

Smiling Sophs

*The* LAURETANUM



*A View of Nerinx Hall*

Patrons

- Very Rev. Wm. P. Barr C. M.  
Rev. J. P. Donovan C. M.  
Rev. F. V. Corcoran C. M.  
Rev. M. J. O'Connell, C. M.  
Rev. J. P. O'Malley C. M.  
Rev. L. P. Foley C. M.  
Rev. T. F. Schmucker C. M.  
Rev. L. Fallon C. M.  
Rev. J. J. Daly S. J.  
Rev. W. C. Kunz  
Rev. Jos. Wentker  
Rev. J. A. Tammany  
Rev. H. Grotsgiers S. J.  
Rev. F. J. O'Conner  
Rev. Friend  
Rev. T. J. Lloyd  
Rev. H. Nieters  
Rev. Jos. Siebert  
Rev. M. J. O'Leary  
Rev. W. A. Hamtil  
Rev. P. J. Ritchie  
Rev. J. Adrian  
St. Louis Seminary  
Rev. J. P. Murray  
Rev. B. S. A. Stolte  
Rev. J. J. McMahon  
Rev. A. J. Von Brunn  
Rev. J. A. McMahon  
Rev. J. P. Lynch  
Rev. R. E. McKeon  
Rev. W. H. Huelsman  
Rev. J. P. O'Rourke  
Rev. John Nugent  
Rev. Friend  
Rev. J. G. Hoelting  
Mr. Louis James  
Miss Mary Elizabeth Newell  
Mrs. Emily Barnicle Tinker  
Miss Helen Eaves  
Miss Theresa Shea  
Mr. and Mrs. J. Weis  
Dr. and Mrs. B. W. Clarke  
M. and Mrs. F. W. Pape  
Mrs. Mary Rabbitt  
Mr. and Mrs. E. A. Coleman  
Mr. and Mrs. T. A. Dailey  
Mr. and Mrs. C. F. Krings  
A Friend  
Mrs. Frances B. Roduit  
Mr. and Mrs. M. J. Kinsella  
Mr. and Mrs. J. C. Corrigan  
Mrs. W. B. Schaefer  
Mr. and Mrs. G. E. Wibracht  
Mr. and Mrs. E. P. Kane  
Mr. and Mrs. J. T. Kane  
Mr. and Mrs. A. Bock  
Mrs. Julia Walsh  
Mrs. Wm. Maffitt  
Mrs. John Muckerman  
Mrs. Schlafly  
Mrs. George F. McNulty  
Mrs. Joseph Muckerman  
Mrs. Robert O'Reilly  
Miss Marian Lambert  
Mr. and Mrs. R. J. Weinacker  
Mr. and Mrs. L. Perez  
Dr. and Mrs. A. R. Poole  
Mrs. E. J. Kohl  
Mr. and Mrs. J. E. Scherer  
Mr. and Mrs. M. Rapillard  
Mr. and Mrs. J. Leuer  
Mrs. F. L. Garthoffner  
Mrs. F. J. Strothkamp  
Mr. M. W. Watson  
Mr. and Mrs. J. C. Murphy  
Mr. and Mrs. J. J. Rogan  
Mr. and Mrs. A. Hangge  
Mr. and Mrs. P. E. Quante  
Mr. and Mrs. J. Delmore  
Mr. and Mrs. J. P. Vollet  
Mr. and Mrs. John Day, Jr.  
Mr. and Mrs. J. J. Bryne  
Mr. and Mrs. J. J. Brown  
Mr. and Mrs. W. D. Moore  
Mr. and Mrs. T. A. Cavanaugh  
Mr. and Mrs. E. H. Strecker  
Mr. Patrick J. Farris  
Mrs. George Wolff  
Mrs. H. McNichols  
Mrs. Edgar Shaw  
Mrs. R. E. M. Bain  
Mr. and Mrs. A. J. Klorer

Patrons

Mr. and Mrs. P. J. Ludden	Mrs. J. R. Cooke
Miss Mary E. Coleman	Mrs. Bertha Wahl
Mrs. Geo. F. Ernst	Mrs. A. J. Walsh
Mr. and Mrs. J. L. Brennan	Mrs. I. D. Kelly
Mr. B. M. Cody	Mr. and Mrs. Friend
Mr. and Mrs. J. P. Coakley	Mr. W. M. Smith
Mr. and Mrs. Oltman	Mrs. John Goodwin
Mr. and Mrs. J. L. Corley	Mrs. J. C. Darst
Mrs. E. Lynch	Mrs. A. B. Harrington
Mr. and Mrs. R. E. Hennessy	Bader's Drawing Supply Co.
Mr. and Mrs. A. Block	Alfred G. Lill
Mrs. F. J. Burleigh	Watchman Advocate
Mr. and Mrs. H. C. Fairall	Mrs. C. P. Stanley
Mr. and Mrs. W. H. Wittrock	Mrs. Richard Taylor Stith
Mr. J. F. Shuford	Mrs. C. Tomkins, Jr.
Mr. and Mrs. H. J. Wilde	Mrs. C. W. Holtcamp
Mrs. C. Condren	Mrs. E. J. O'Donnell
Mr. and Mrs. F. H. Hamel	Mrs. E. J. Costigan
Mr. and Mrs. W. W. Walsh	Mrs. John M. Travis
Mr. and Mrs. G. R. Smith	C. J. Kehoe
Mr. and Mrs. M. Fellenz	Mrs. Allen Baker
Mr. and Mrs. Arthur J. Widmer	Judge Jerry Mulloy
Mr. and Mrs. J. H. Reddin	Mrs. W. Donovan
Mr. and Mrs. B. H. Kuyath	Mrs. O. P. J. Falk
Mrs. Geo. H. Broeker	Mrs. Leo Moser
Mr. and Mrs. Geo. E. Broeker	Mrs. A. B. Bussman
Mr. and Mrs. L. Fiorette	Mrs. H. Bresser
Mr. A. E. Kirk	George M. Herpel
Mr. and Mrs. Bussman	A Friend
Mrs. Edward O'Brien	Harry W. Castlen
Mr. and Mrs. R. M. Janes	Willis W. Benson
Mr. and Mrs. Bonger	P. G. Deuser
Mr. and Mrs. F. G. Bareis	Mrs. John E. Riley
Mr. and Mrs. F. J. McKenna	Mrs. John A. Calnane
Mr. and Mrs. T. A. Quirk	Oscar H. Jacobsmeyer
Mr. and Mrs. Robert Barnicle	A Friend
Mr. and Mrs. Chas. E. Geary	Mrs. Clara E. Kelly
Mr. and Mrs. John A. Burke	Arthur W. Schmid
Mrs. Mary Reardon	Stertzing Floral Co., Inc.
Mrs. V. Bergenthal	Aeolian Co. of Missouri
Mrs. Chas. F. Stuart	Wacker-Helderle Undertaking Co.
Mrs. Edw. J. Powers	A Friend Co.
Mrs. Dalton Kinsella	National Chair Co.
Mr. Thomas J. Farris	Meletio Sea Food Co.
Mrs. Martin Shaughnessy	

The LAURETANUM

LORETTO ACADEMY  
El Paso, Texas  
ST. MARY'S ACADEMY  
Denver, Colorado  
LORETTO ACADEMY  
Kansas City, Missouri  
ST. MARY'S HIGH SCHOOL  
Sterling, Illinois  
ST. MARY'S ACADEMY  
Colorado Springs, Colorado  
ST. PATRICK'S HIGH SCHOOL  
Kankakee, Illinois



**HUNLETH**  
MUSIC CO.  
514-516 LOCUST ST.  
MOST COMPLETE MUSIC HOUSE IN ST. LOUIS  
JOBBER'S - DEALERS  
HIGHEST GRADE  
MUSICAL VICTROLAS  
INSTRUMENTS RECORDS  
SHEET MUSIC PIANOS  
FOR RENT & REPAIRS

*Krey's*

Breakfast Bacon  
U. S. Government Inspected  
2100 BREMEN AVENUE  
TYLER 3170

WE OWN AND OFFER  
FIRST MORTGAGE CATHOLIC  
SECURITIES

*Bitting & Co.*

SAINT LOUIS  
316 N. 8th St.  
DALLAS  
1st Nat'l. Bank Bldg.

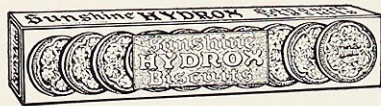


**BUSCH**  
**EXTRA DRY**  
GINGER ALE

Its excellence is evidenced by  
the wide patronage of discrimi-  
nating folks who are particular  
about what they serve and drink.

*America's Finest Ginger Ale*

ANHEUSER-BUSCH - ST. LOUIS



## HYDROX

. . . the famous cream-filled chocolate biscuits. They are widely imitated. Better say "Sunshine Hydrox" to your grocer. They have no other name.

LOOSE-WILES BISCUIT COMPANY

Compliments of . . .

THE WEB

Collegiate Suppressed Desire  
A little bit of engine,  
A little hunk of tin,  
A little push, a little shove  
A hop to get one in.  
A brake, a starter and a choke,  
Four little rubber tires;  
A can of paint, a pint of gas—  
The Collegiate Suppressed Desire.  
A sunny day, an afternoon,  
A date with her at two.  
She saw the car, her heart went plunk,  
Just what was she to do?  
She closed her eyes, and stepped right  
in;  
His heart was all afire.  
That afternoon she surely made  
Her Collegiate Suppressed Desire.

COMPLIMENTS OF . . .

James O'Connor  
Coffee Co.

## MISSOURI STATE LIFE

*Largest Life Insurance Company  
West of the Mississippi*

Over \$1,200,000,000.00 of Life  
Insurance in Force

Missouri State Life  
Insurance Co.

1501 LOCUST STREET  
CENTRAL 700

Tel.: MAin 3026

Hot Chocolate      Distributors      Coca Cola  
Malted Milks      Hires Root Beer

F. T. KUEHNE  
Flavoring Extract Co.  
"ORCHARD BRAND"

Extracts, Colors, Crushed Fruits, Syrups  
and Supplies

208 WALNUT STREET  
ST. LOUIS, MO.

"The Soda Fountain Supply House"

1880 . . . 1930  
LAND TITLE INSURANCE CO.  
OF ST. LOUIS  
50th ANNIVERSARY  
JAMES M. ROHAN

CHESTNUT 9322

*President*

WYDOWN 0215

---

Aunt: "Oh, Bobby, how cruel. Why did you cut that worm in two?"  
Bobby: "Oh, he seemed so lonesome."

---

COMPLIMENTS OF THE JUNIOR CLASS

---

COMPLIMENTS OF THE SOPHOMORE  
CLASS

COMPLIMENTS OF A FRIEND

---

4632 Olive Street    6120 Kingshighway  
DElmar 0784        PArkview 6737-J

**John C. Murphy Co.**  
PLUMBING AND SANITARY  
ENGINEERING

~~~~~  
*Your Work Done Promptly, Correctly and  
At the Right Price*

*Compliments of*  
**Battle Creek Health  
Institute**



625 LOCUST STREET  
CENTRAL 0639

---

Phone: TYler 1129

Established 1896

**J. F. CORRIGAN**

Plumbing Contractor

2501 St. Louis Avenue

St. Louis, Mo.

*The* LAURETANUM

Again...

the Portraits for the

LAURETANUM

Were Made by

SID WHITING STUDIOS

GRAND AT WASHINGTON

JEfferson 8666

OLIVE AT PENDLETON

JEfferson 7294



SID WHITING

BURREL ROGERS

One Hundred Nineteen

## HAUSCHULTE REAL ESTATE COMPANY

REAL ESTATE BOUGHT AND SOLD :: RENTS COLLECTED

Money to Loan :: Notary Public

OFFICE: 2407 NORTH BROADWAY

### MORGENTHALERS

CLEANERS AND DYERS

~~~~  
*City Service*

1000 Washington Boulevard  
CENTRAL 5092

~~~~  
*County Service*

7815 Forsythe Boulevard  
WYDOWN 1070

### Lowe and Campbell

ATHLETIC GOODS CO.

~~~~  
1127-1129 PINE STREET

St. Louis, Mo.

### THOS. J. FARRIS

*District Manager*

Missouri State Life Insurance Company

~~~~  
1501 LOCUST STREET

CENTRAL 1700

CABANY 6906

Compliments

of

MR. AND MRS. M. RAPILLARD

Lizzie: "Did you hear Lena is married?"

Dizzie: "No. Who did she marry?"

Lizzie: "Oh, some clerk in a grocery store who first attracted her attention by giving her an apple."

Dizzie: "Well, there's another case of the apple starting some trouble."

WE have in this section ads and wit mingled together. Please enjoy it.

The ads are worth reading.

The jokes are good, too.

This section is put in this book to please you.

EVERgreen 3823

EDWARD P. KANE

CONTRACTOR OF BRICKWORK

PINE LAWN-ST. LOUIS

COY & DELMORE

Successors to

MANNION & COY

Live Stock Purchasing Agents

NATIONAL STOCK YARDS, ILLINOIS

Compliments of . . .

ST. LOUIS UNIVERSITY HIGH SCHOOL

CHestnut 6246

R. J. KRONER

Jeweler

Diamonds—Watches—Jewelry

Suite 214-15-16 Republic Bldg.

704 OLIVE STREET ST. LOUIS, Mo.

JOHN H. GEBKEN

WM. G. BENZ

WM. WINGBERMUEHLE

Gebken Undertakers

FUNERAL CHAPELS AND  
PARLORS

2630 GRAVOIS AVENUE

LAclede 1272

2842 MERAMEC STREET

RIverside 3760

BRENNAN'S

Good Things to Eat

954 GOODFELLOW AVE.—CABANY 2649

6180 DELMAR BLVD.—CABANY 5800

200 W. LOCKWOOD—KIRKWOOD 1600

Compliments of

Old Orchard

State Bank

Old Orchard and Big Bend Roads

WEBSTER GROVES, MO.



## A FRIEND

A Suitable Washday Service  
For Every Family Budget

Phone DElmar 4720

**WEST END LAUNDRY CO.**  
"Complete Laundry Service"

GRAND 8700

GRAND 8701

**A. P. FEDDER**  
DRUGGIST

Cor. Compton and Shenandoah Aves.

ST. LOUIS, MO.

\$5.00—NO HAT OVER—\$5.00

*A Different Hat for Every Dress*

Just the Right Style,  
Shade and Price

**MARIE MAC**  
**HAT SHOP**

317 N. TENTH

Central 3659

St. Louis

### Art In Footwear . . .

*Fashion's distinctive individualists establish the new vogue with Peacock Hi-Arch narrow heel Footwear.*

**Peacock Shoe Shop**

PEACOCK SHOES  
Gordon Hosiery

808 Olive St. ARCADE BLDG.

Usher: Are you a friend of the groom?

Lady: Indeed not. I'm the bride's mother.

Compliments of the . . .

CAFETERIA OF WEBSTER COLLEGE

In Appreciation of the Fine Spirit Shown by  
Our Student Patrons

Compliments of . . .

F. P. KENKEL

"My mother will never go to bed before two o'clock in the morning. I can't break her of the habit."

"What does she do all the time?"

"Waits up for me."

COMPLIMENTS OF A FRIEND

CABANY 5019

WE DELIVER

CABANY 6590

NELSON'S

*Ice Cream of Finer Quality*

-:-

*Delicious Bakery Goods and Candies*

440 DE BALIVERE AVE.

Blackwell-Wielandy  
Company

*Printers of Periodicals  
Book Manufacturers*

THE LORETTINE  
*Is Printed By Us*

1605 LOCUST STREET

Compliments of . . .

COLLECTOR

of University City

Office Phone, CENTRAL 1070

Residence, FOREST 7040

HENRY P. HESS  
ARCHITECT



1301-2 AMBASSADOR BUILDING

ST. LOUIS, MO.



Architect for Loretto Hall

"Miss Kause is older than I thought she was."

"Yea, how do you know?"

"Well, I asked her if she had read Homer's Odyssey, and she answered that she had read it when it was first published."



A dentist's ad in local paper:

"Special pains given to new patients."

Woods Pharmacy Co.  
*Try Our Sanitary Soda Service*



Phones: WEBster 2733—3481

BIG BEND AND OLD ORCHARD

ANNOUNCING . . .

*The Very New*  
VOGUE NARO-TOE STYLES

We can't picture here all the thrilling new ideas, so do come in soon and see them all.

Vogue Boot Shop  
615 LOCUST STREET  
*St. Louis' Smartest Footwear Shop*

R. R. LAMBERT  
Heating Company

CONTRACTORS

STEAM, VAPOR AND HOT WATER

*Deferred Payment Plan*

3957 McPHERSON AVENUE  
FRanklin 0640

HEALTH...

... the rightful heritage of childhood; the dependence of future years - - - the well-iced refrigerator to always protect food from contamination, to keep it fresh and pure - - - to help little bodies grow strong.

POLAR WAVE  
ICE

Parkview 1600-1-2-3

**Dorr & Zeller**  
**Catering Co.**

*Weddings, Receptions and Teas*

*Supplied on Short Notice*

DeBaliviere and Waterman Avenues

SAINT LOUIS

PRENDERGAST  
LUMBER CO.

Dealers in All Kinds of

LUMBER

*Millwork, Mouldings, Roofing and  
Building Paper, Wall Board,  
Wire Fence, Etc.*

Office and Yards:

Ninth Street and Cass Avenue

SAINT LOUIS

CHESTNUT 4460

FESTUS J. WADE, JR. & CO.  
Paul Brown Building . . . Central 8880 . . . . Saint Louis  
St. Louis Stock Exchange—Members—New York Curb (Associate)

"Has your son's college education proved to be a gain in any way?"

"Yes, indeed. It has stopped his mother's bragging about him."

Quarry Operators  
UNION QUARRY & CONST. CO.  
BIG BEND QUARRY CO.  
SKRAINKA CONSTRUCTION CO.

*General Contractors*  
ST. LOUIS, MO.  
Phone: GARfield 0889  
806 SECURITY BLDG., 4TH & LOCUST

PARKER  
Undertaking Co.

WEBSTER GROVES AND MAPLEWOOD  
Phone: WEBster 205

Main Office and Funeral Parlors  
15 WEST LOCKWOOD BOULEVARD  
WEBSTER GROVES

Maplewood Office:  
7356 MARIETTA AVENUE  
Phone: Hlland 0031

ELLIS AND RICHMER COAL CO.

Boatmen's Bank Building  
St. Louis, Mo.

FIRST NATIONAL BANK

East Side Court House Square—Clayton, Mo.

*Under U. S. Government Supervision*

Compliments of . . .

E. G. HENSGEN  
Plumbing Co.

THE BAIRD-BURNS  
Dry Goods Store

106 NORTH LOCKWOOD  
First National Bank Bldg.

~~~~~  
*"It Pleases Us to Please You"*  
~~~~~

WEBSTER GROVES, MO.  
Phone: WEBster 3023

"It's not the school," said a little boy to his mother, "It's the principal of the thing."

Lillie: "The man I marry must be a hero."

Tillie: "Oh, you're not that bad."

540 ARCADE BLDG.

CHESTNUT 9609

**ROMANA**  
COATS AND DRESSES

812 OLIVE STREET

---

*It Is Our Desire To Always Serve*

**N. P. WINTERS**  
Electric Company

Make Your Next Electric Repair and  
Electric Need Our Store—To  
Serve You

*As Close To You As Your Telephone*

PHONE WEBSTER 1576

---

—Riverside 1903—

*Original Bosch Pyro-Action Spark Plugs*

**Bechler Battery & Auto**  
Electric Service Co.

4705 SOUTH BROADWAY

Starter, Generator and Ignition Repairs  
Auto Batteries Charged and Loaned

Seiberling and Superior Batteries  
Robert Bosch Products

**John Dockery and Son**  
Real Estate Co.

1002 CHESTNUT STREET

CHESTNUT 6279

---

**A. BRANDENBURG**

Quality Foods

WEBSTER 125

746 E. BIG BEND ROAD

---

Garfield 1402

**St. Louis Costume Co**

*THEATRICAL COSTUMERS*

and

*WIG MAKERS*

507 N. Broadway St. Louis

FRANK J. HERBERS, Pres.

---

*SAY IT WITH FLOWERS*

**CERNY FLORAL COMPANY**

344 S. KIRKWOOD ROAD } **Two Stores** } 122 E. LOCKWOOD AVENUE  
Phone: Kirkwood 916 } Phone: WEBster 2950  
Greenhouse: 430 S. VAN BUREN AVE., KIRKWOOD Phone: 1642

---

“My father says he thought nothing of studing five hours every night when he went to school.”

“Well, I don't think much of it myself.”

# The LAURETANUM

## Beauty Now . . . Permanence in Later Years . . .

*Assured* for your Bechtold Bound Book. As the years pass, the contents of your annual will become more and more priceless.

Bound as it is, in a Bechtold Cover, this edition with ordinary care will last more than a lifetime.

The distinction and charm of genuine craftsmanship possessed by all Bechtold Covers is well exemplified in this

1930 LAURETANUM

**BECHTOLD COVERS**

~~~~~  
**Bechtold Company**

200-212 PINE STREET

St. LOUIS, Mo.

CHestnut 8453      CHestnut 8452  
J. D. HEALY, *President*

**HENRY HIEMENZ**  
**Realty Co.**

REALTORS  
*Established 1873*

*Sales—Loans—Rentals—Insurance*

614 CHESTNUT STREET  
ST. LOUIS, Mo.

**Baldwin-Pope**  
**Marketing Co.**

*"Growers' Marketing Agency"*

Fruits and Produce

General Office

825 NORTH FOURTH STREET

## JOIN A UNION

"Why so depressed, old man?"

"The horrible cost of living; constant bills coming in for materials, paints, and shingling."

"What, your house?"

"No, my daughters"

**CASPER STEHLE**  
**Bedding Co.**

1834 MORGAN STREET

—For—

Institutions and Hospitals  
Mattresses and Pillows

COMPLIMENTS OF A FRIEND

NEW CRYSTAL LAUNDRY CO.

Telephone: LINDELL 3386

3936-38 Laclede Avenue

---

FROM A FRIEND

---

F. WEBER CO.

*The Dependable Artist Colors—and Materials for Oil  
—Tempera and Water Color Pastel Painting*

705 PINE STREET

:-:

:-:

ST. LOUIS, MO.

---

He: "Look, our Captain is going to kick the goal."

She: "What did the goal do?"

---

GILLESPIE & DALY, Inc.

Masons and General Contractors

Compliments of  
**GRAND NATIONAL BANK**  
OF ST. LOUIS  
Grand and Olive

---

**M. Longo Fruit Co.**

ST. LOUIS, MO.

*Exclusive Wholesale Distributors*

Atwood Grapefruit—Tree  
Ripened

*Contractors for Terrazzo Floors in  
New Residence Building*

LORETTO HALL

THE  
**TERRAZZO CO.**  
Incorporated

1232 ARCADE BLDG.

---

Essie: "Anything exciting on the phone?"

Susie: "Nothing but bad luck. I just got a date for dinner at the Jefferson, and then I found out the boy had the wrong number."

---

**H. STECHER'S MARKET**

Fancy Groceries, Meats and Vegetables

Phone: Hlland 9981

2807 BIG BEND ROAD

:-:

:-:

MAPLEWOOD, MO.

---

**G. S. ROBINS AND CO.**

ST. LOUIS, MO.

Wholesale Industrial Chemicals and  
and Laundry Supplies

L. FAVAZZA

*Wholesale Fruits and Produce*

1228 N. SEVENTH STREET

ST. LOUIS, Mo.

CENTRAL 8787

WE SUPPLY  
WEBSTER COLLEGE

Compliments

W. H. Young & Bros.  
Brokers

*Stocks and Bonds*

705 OLIVE STREET

L. S. LUCAS  
Furniture Shop

Finished and Unfinished  
Furniture

*Recaneing*    :-    *Refinishing*  
*Upholstering*    :-    *Repairing*

7136 MANCHESTER  
Hiland 2857

Compliments of

E. F. DAVID  
House Moving Co.

611 WAINWRIGHT BLDG.  
7th and Chestnut

JEFFERSON 0427

*We Also Make the Inner Spring Mattresses  
to Order*

L. H. Stehle Mfg. Co.,  
Mattresses, Pillows and Bedding  
Box Mattresses

*Hospital and Institution Work A Specialty*  
*Mattresses and Pillows Renovated  
and Sterilized*

3126 EASTON AVE., ST. LOUIS

When in Need of  
*ART SUPPLIES AND  
DRAWING MATERIALS*

Call On Us

Our Stock is Complete and Our Prices  
Will Please You

BADER'S

Phones: GARfield 2870-2871

1110 LOCUST STREET, ST. LOUIS

Compliments of

Winkle Terra Cotta Co.

902 CENTURY BUILDING

ST. LOUIS, Mo.

The LAURETANUM

Compliments of  
**RALPH STANLEY  
CIGAR CO.**  
700 OLIVE STREET  
ST. LOUIS, MO.

**Electrical Equipment . . .**

—At—

WEBSTER COLLEGE

Installed by

**A. L. Brod Electric Co.**

1924 SALISBURY STREET

TYLER 2782

**Southern Surety Co.**  
*Of New York*

~ ~ ~

HEAD OFFICE: ST. LOUIS, MO.

CEntral 6789

**Wm. Clarkson & Sons**  
WOOLEN CO.

*Serges, Veilings, Linens, Laces, Silks*

*New Address*

612-614 FRANKLIN AVENUE

ST. LOUIS, MO.

Lines of Latin all remind us  
We can make our lives sublime.  
And by asking foolish questions  
Take up most of Sister's time.

~ ~ ~

"I could never understand," said a co-ed, "Why one choir is better than the other. They all have the same chants."

**OLLIE E. HAUPT  
MOTOR CO.**

~ ~ ~

4166 OLIVE STREET

**Ford Dealers**

**Cooke-Stubinger  
Hotel Kitchen Equipment  
Company**

~ ~ ~

*Makers of Cornet & Collar Zincs*

~ ~ ~

1316 MORGAN STREET

ST. LOUIS, MO.

## CROGHAN

Funeral Director

~~~~~  
*Ambulance and Limousine Service.*  
~~~~~

7146 MANCHESTER AVENUE

JERE SHEEHAN

JOS. SHEEHAN

## J. Sheehan Plbg. Co.

*Est. 1870*

1609 OLIVE STREET

CEntral 3130

LIndell 5766

LIndell 4128

## ELLIOTT & BARRY Engineering Co.

Heating Engineers and  
Contractors



4060 WEST PINE BOULEVARD

ST. LOUIS, MO.

Headline in paper: "College Officials  
Strive to Make Education a Lifelong  
Process."

Comment: So do many students.

Teacher: "Never say die children,  
never say die."

Student: "How about the Cleaner's  
business?"

## Gardner Pocketbook

Manufacturing Co.

Manufacturers of

Fine Leather Goods and  
Prince Gardner Billfolds

~~~~~  
*Goldmarking Names in Gold*  
~~~~~

1906 PINE STREET

GARFIELD 3400

*For Honest Printing Value Plus  
Service That Serves*

## Glynn Printing Co.

302 N. THIRD ST., AT OLIVE

Call CHESTNUT 5265

**JOS. W. CLARK**  
FUNERAL DIRECTOR

~~~~~  
FUNERAL HOME  
1125 HODIAMONT AVENUE  
N. W. Cor. Suburban Avenue  
CAbany 3950

**POWERS & BOYD**  
Cornice & Roofing Co.

~~~~~  
3614-16 LACLEDE AVENUE  
ST. LOUIS, MO.  
~~~~~  
*Sheet Metal Work*  
*Since 1891*

PROBLEM IN GEOMETRY

Theorem: Shakespeare was a football player.

Given: Shakespeare.

To prove: He was a football player.

Proof:

"Down, Down, More Rushes"  
—Henry VI.

"A touch, a touch, I do confess it."  
—Hamlet.

"I'll catch it e'er it comes to the ground."—Macbeth.

"Let him not pass but kill him.

But to the goal."—Winter's Tale.  
Q. E. D.

**Dr. C. M. COE, Inc,**

Specialists in  
Ambulant Proctology  
*Consultation and Examination Free*

Hours: 9:00 A. M. to 8:00 P. M.  
Sundays 10:00 to 1:00

501 PINE STREET  
St. Louis, Mo.

**CULLEN and KELLY**  
Undertaking Co.  
FUNERAL DIRECTORS

J. A. LAMMERS, Pres.  
Res. Phone: ATwater 965-w  
Chapel 1416 N. Taylor Avenue  
DElmar 3323-w  
4524 Easton Avenue  
DElmar 0689  
Office: DElmar 0130

We, in Unison with Other Webster Merchants, are Proud of  
**WEBSTER COLLEGE**  
*And Appreciate Your Patronage*

WEBSTER 2671 OR 2672

**Old Orchard Pharmacy**

ALBERT C. LISHEN  
Manager

RIverside 6360-6361 GRand 0417-0418

**KRIEGSHAUSER**  
UNDERTAKING CO.

Funeral Homes Beautiful

~~~~~  
*Visitors Always Welcome*  
~~~~~

4228 S. KINGSHIGHWAY BLVD.  
4104 MANCHESTER AVE.

The LAURETANUM

Compliments of . . .

J. C. WEILER

THE PAPER IN THIS BOOK

—Is—

DILL AND COLLINS  
OLD IVORY

—◆—  
Distributed by

ACME PAPER CO.

St. Louis

SMITH & DAVIS MANUFACTURING CO.

Beds and Springs Installed Throughout Loretto Hall—Webster  
St. Louis, Mo.

Compliments of

JOE GARAVELLI

DeBaliviere and De Giverville

Mermod, Jaccard and King

JEWELRY COMPANY

900 Locust Street . . . St. Louis

THE TIE YOU ADMIRERD ON HIM  
that night was probably purchased  
at . . .

Hynes & Weaver Shirt Co.

701 Pine Street . . . 302 N. 8th St.

Ecclesiastical Marble  
Company

1307 Federal Commerce Trust Bldg.

ST. LOUIS, MISSOURI

O'Connor Coal Co.

2710 Lafayette

Victor 1695

EVERgreen 3908

PERRY-HIGGINS

LAUNDRY COMPANY

4938 Natural Bridge

COMPLIMENTS OF

Gamp Electric Co.

517 Spruce Street

St. Louis, Mo.

The LAURETANUM

COMPLIMENTS OF . . .

GEO. H. BROEKER  
Cigar Co.



2100-2 NORTH NINTH STREET  
ST. LOUIS, MO.

HAZEL SLOAN  
HAIR SHOPPE

5237 DELMAR BOULEVARD  
ST. LOUIS, MO.

Phone: FOREST 2380

Hair Cutting  
Permanent Waving  
Marcelling

Finger Waving  
Manicuring  
Hair Dyeing

Specialists in All Branches of Beauty Culture

Compliments of the

Sunday Watchman  
*The Catholic Paper Supplements  
the Sunday Sermon*



52 Issues for \$2.50  
5c a Copy

LINDELL 9045

CAESAR CHICHIZOLA

Importer of

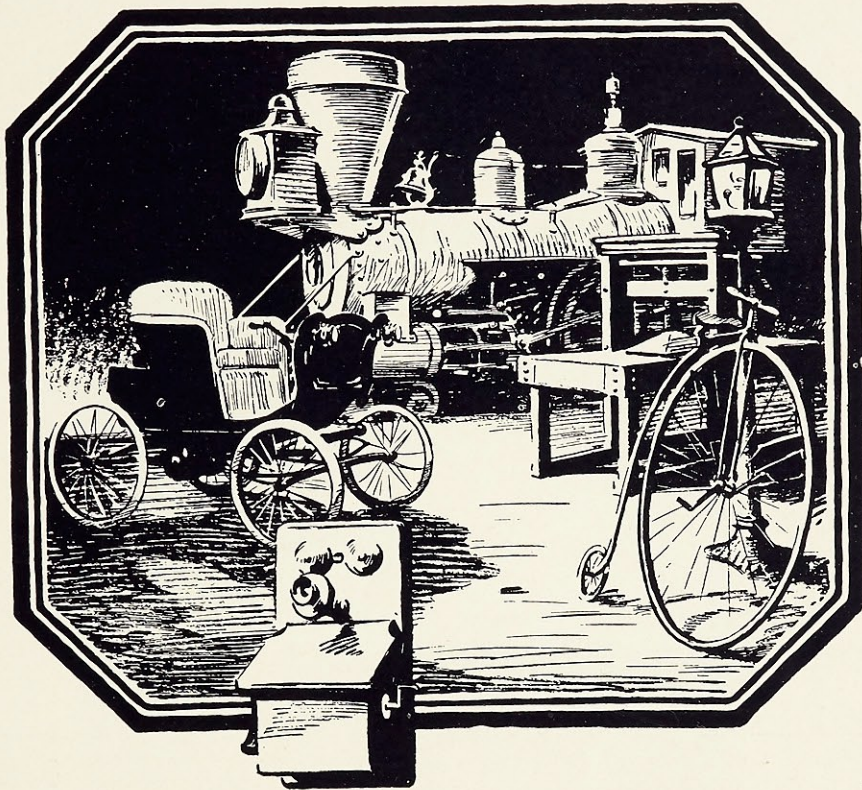
FRENCH AND ITALIAN PURE  
OLIVE OIL

NOTHING BUT THE PUREST

4345 MARYLAND AVENUE  
ST. LOUIS, MO.

COMPLIMENTS OF A FRIEND

# The LAURETANUM



*M*ETHODS and Machines . . . that belonged to grandfather's day still belong there. Yesterday's standards are forgotten in the light of today's discoveries. . . Yesterday's machines have no place in today's competition . . . They belong in the museums or on the scrap heap.

Typesetting machines, automatic presses and up-to-date type faces which are part of our modern equipment, reflect themselves in high grade printing such as

## THE LAURETANUM

Which Is a Product of Our Modernly Equipped Plant

**KOHLER & CO.**

2122 PINE ST.



St. Louis, Mo.

*Quality Printers*

COMPLIMENTS OF THE  
FRESHMAN CLASS

COMPLIMENTS OF . . .

The Loretto Foundation



*A Foundation for the Development  
of Finer Catholic Womanhood*

The bore tells you the story of his life.  
The genius sells it to a magazine.

A young man at college named "Freeze"  
Weighed down by M.A.'s and A.B.'s,  
Collapsed from his strain  
Said the doctor, "It's plain  
You're killing yourself by degrees.

SPECIAL FURNITURE      ARTISTIC LAMPS

EXCLUSIVE WALL PAPERS

*That Are Different*

Interior Painting and Decorating

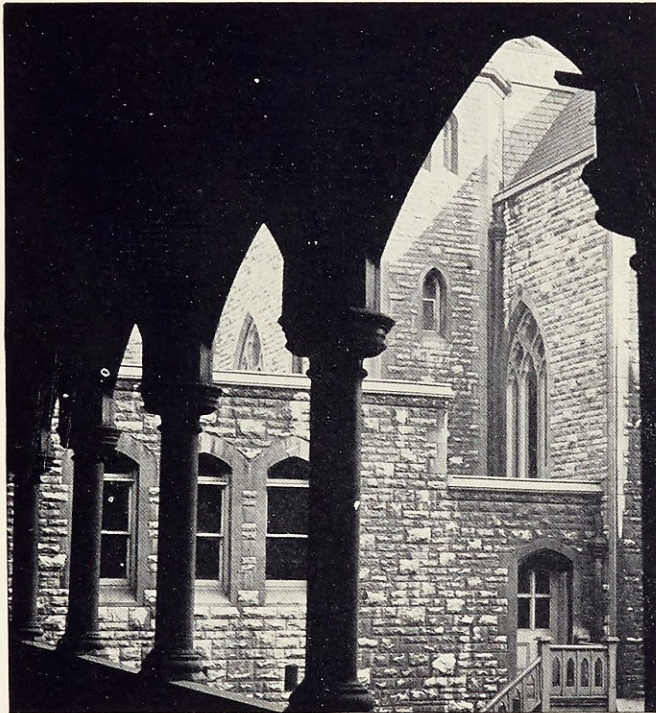
~~~~~  
**P. Loire Wall Paper Co.**

3748 WASHINGTON BOULEVARD

Corner Spring

MIRRORS

~~~~~  
SCENIC PANELS



**D**istinctive ideas in annuals are a prime factor in a successful book~~~In all our annuals there is found distinction plus the finest quality of workmanship~~~

**CENTRAL ENGRAVING COMPANY**  
SAINT LOUIS

The LAURETANUM

