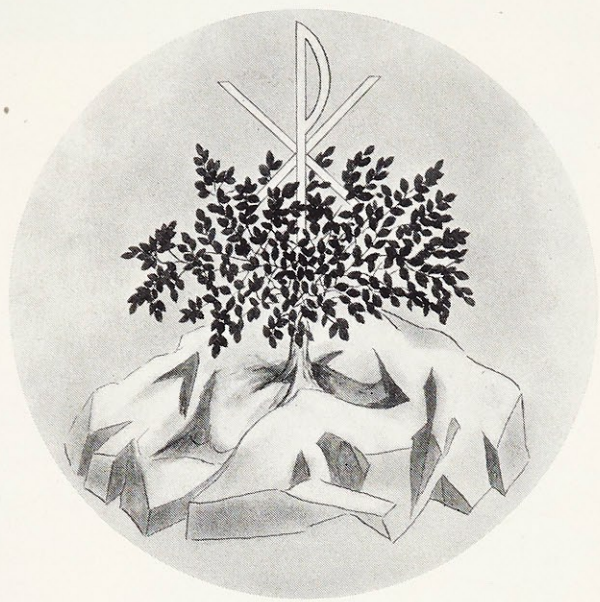
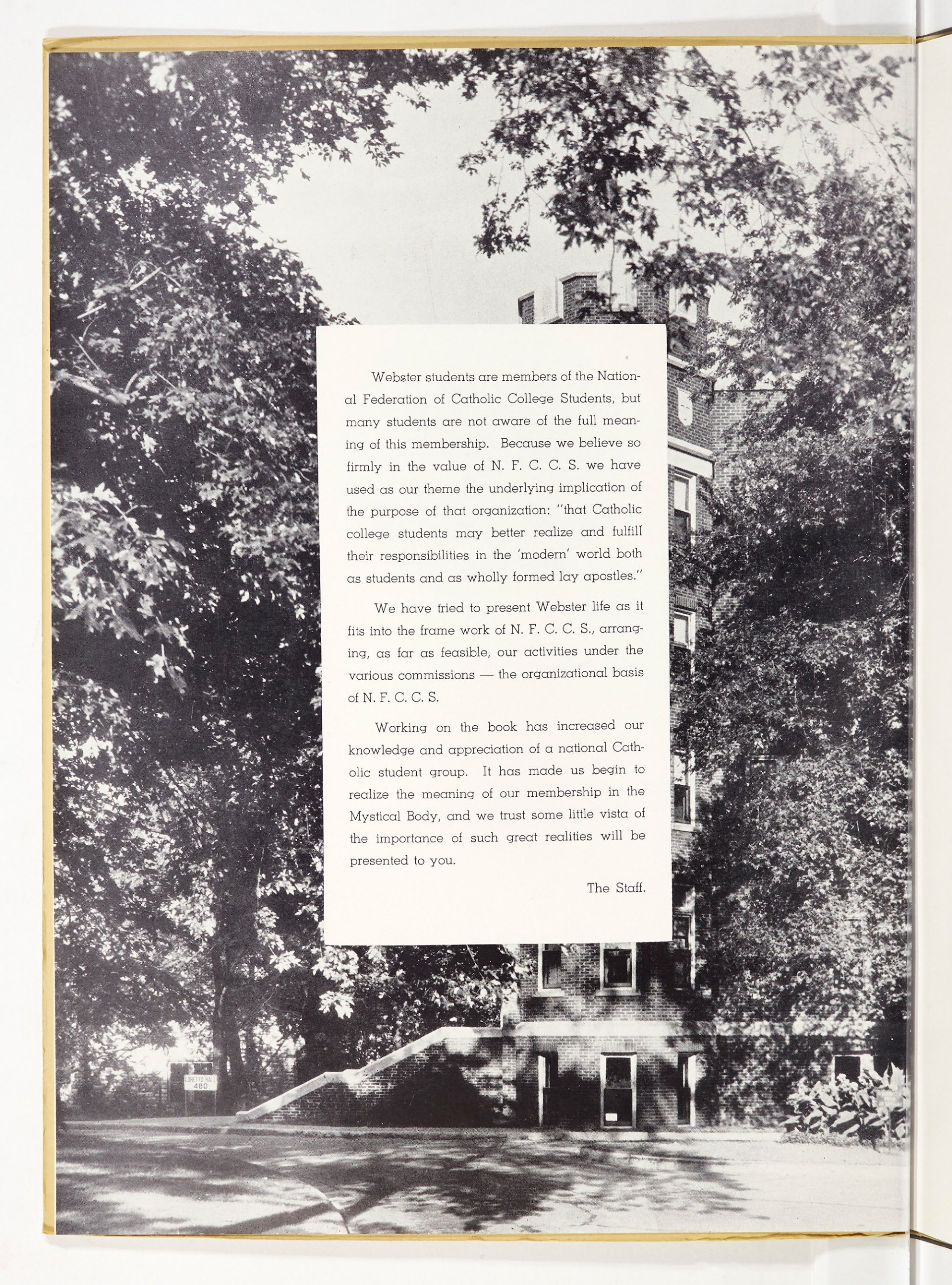




Lauretanum
Webster College



Lauretanum



Webster students are members of the National Federation of Catholic College Students, but many students are not aware of the full meaning of this membership. Because we believe so firmly in the value of N. F. C. C. S. we have used as our theme the underlying implication of the purpose of that organization: "that Catholic college students may better realize and fulfill their responsibilities in the 'modern' world both as students and as wholly formed lay apostles."

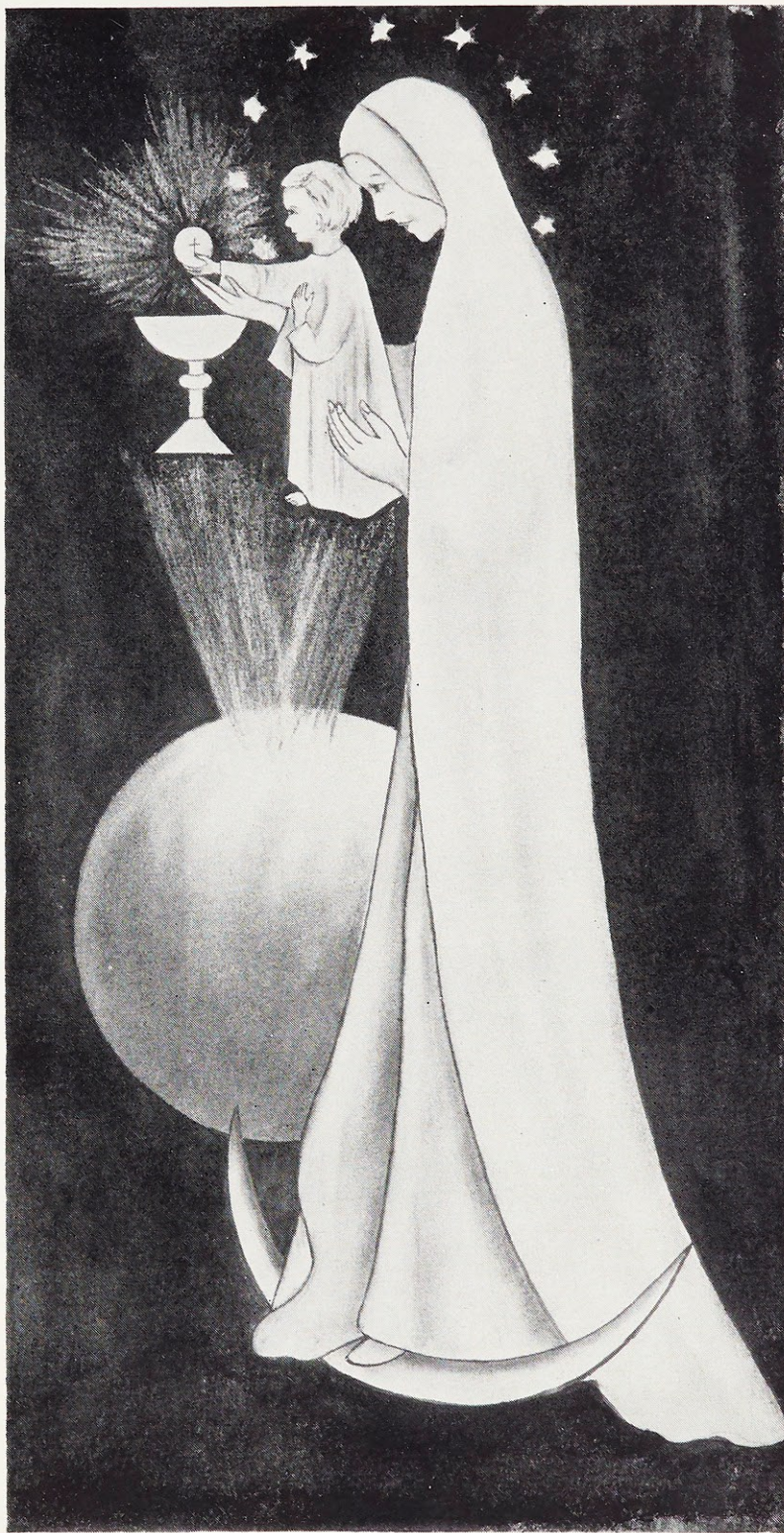
We have tried to present Webster life as it fits into the frame work of N. F. C. C. S., arranging, as far as feasible, our activities under the various commissions — the organizational basis of N. F. C. C. S.

Working on the book has increased our knowledge and appreciation of a national Catholic student group. It has made us begin to realize the meaning of our membership in the Mystical Body, and we trust some little vista of the importance of such great realities will be presented to you.

The Staff.

Dedication

We, as members of the Mystical Body, Christians living in Christ, must strive to relive His life, perform His actions, radiate His goodness — live the very details of His life. To you, Our Lady, the one perfect member of the Mystical Body, who did perfectly what we must do in our own weak fashion, we, the **Lauretanum** staff of 1950, devotedly dedicate this book with the prayer that you, the perfect Christian, full of grace, will be our true Mother, guiding us to full and perfect membership in the Mystical Body of your Divine Son.



Our Lady of the Mystical Body



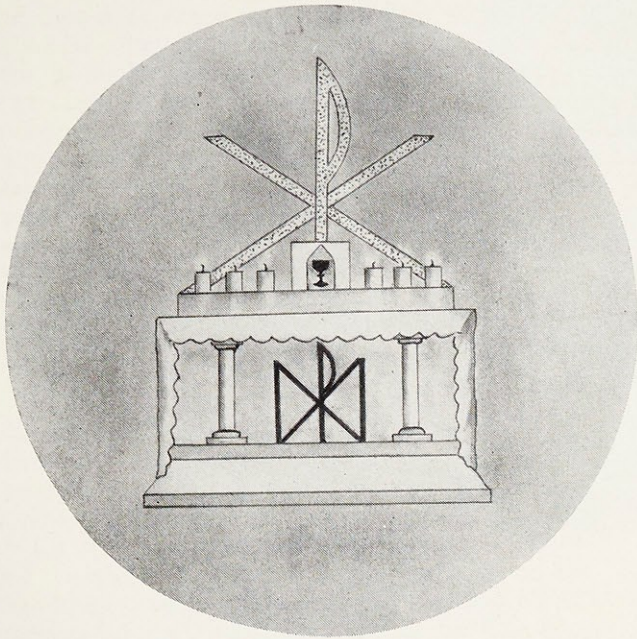
Holy Mass, The Center of Christian Life

God created a human race, a race which is one, social, and corporate. By His Death on the Cross, Christ lifted that race to a higher oneness, a closer oneness in Himself — His Mystical Body. In modern times the world has been captured by a disastrous individualism, a selfish emphasis upon our individual selves.

Mass is offered together. It is an action of the entire Mystical Body and at Mass we are in the closest unity on earth. It is necessarily corporate and is the best teacher of the corporate sense — the recognition of our oneness at any level. Only through participation at Holy Mass can we come to the realization of our oneness with Christ and carry that realization with us into all spheres of life.

✠ *The more of a saint a woman is . . .*

Liturgy and Mariology

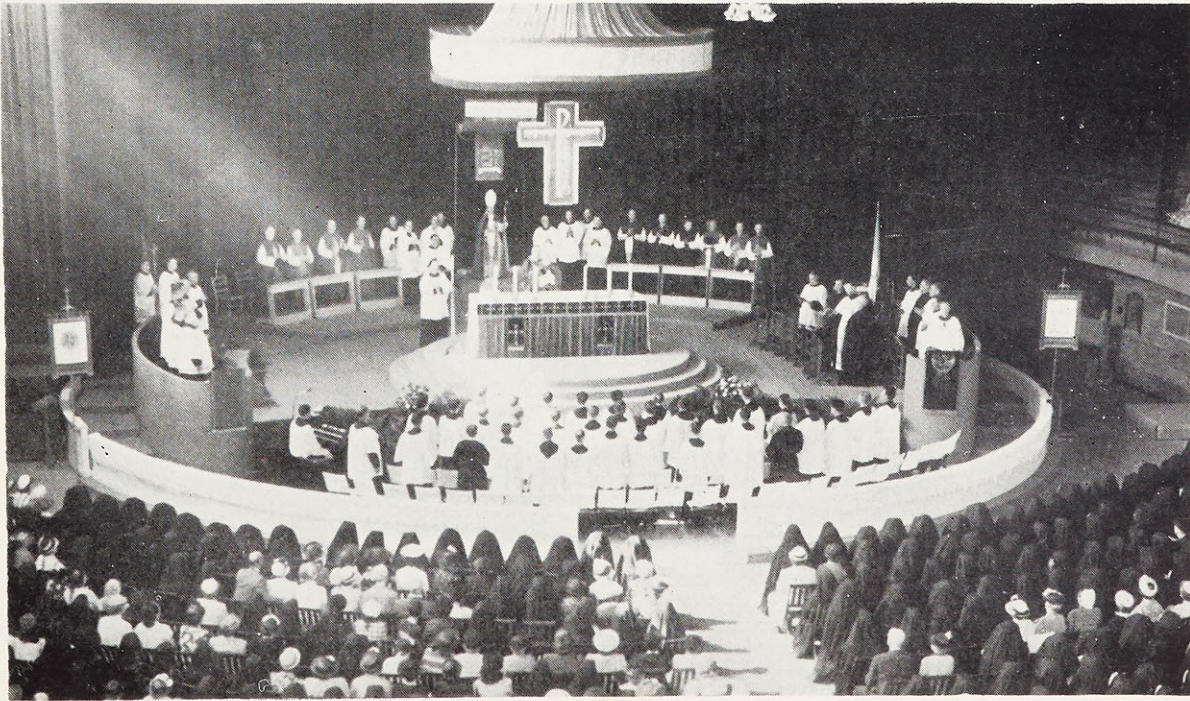


The liturgy of Mary's feasts throws a golden light on the great dogma of the Mystical Body. In the radiance of that dogma we understand better Mary, Exemplar of the Mystical Body. The rosary reminds us of the role of the Blessed Virgin in the Incarnation and Redemption. The Breviary and Missal set her portrait in radiant light.

The great incarnational plan of creation by which God exalts man to a participation in divine life is realized through her and in her. Her perfect correspondence with this plan, her perfect denial or sacrifice of self, her utter self-giving to the Will of the Creator, is abundantly set forth in the most frequently recurring texts in the liturgy of her feasts.

Through our sodality we bring Mary's liturgical living into focus and pattern our living on the perfect model.

Specially designed altar by Dean Murphy, Washington University, for Tenth National Liturgical Week held at St. Louis University gymnasium.



✠ . . . the more of a woman she is.

Sodality Activities Stress Liturgy

"Whatever belongs to the external cult of religion certainly has its importance; but nevertheless it is necessary above all that Christians should **live** the life of the liturgy, and by its supernatural inspiration should be nourished and refreshed." (Pope Pius XII in his recent encyclical, **On the Sacred Liturgy**.)

At the student-faculty institute held at the beginning of school in September the question frequently arose, "How can we at Webster actually live the liturgy?" Students and instructors, some of whom had recently come from the meetings of the Liturgical Conference held in St. Louis, and others who had visited liturgy-centered Grailville during the summer offered suggestions, brought up problems, aired their views. When the institute was over the school year began more or less as usual, but the discussions of the institute were not forgotten. Individuals and groups began to study the liturgy, to find out for themselves what it means to live the life of the Church. Articles on liturgical living appeared in the college paper. The Mission study club chose as its topic for the year a review of the current movements in the lay apostolate, giving special attention to ways in which the workers of the various apostolates incorporate the liturgy into their daily living. A Freshman chant class, directed by Mr. George Schaefer, practiced diligently and, by the time of the sodality reception on the Feast of the Immaculate Conception, the group was able to sing a Gregorian Mass in honor of Our Lady.

Feeling that complete integration includes some play, Webster also gave thought to the matter of Christian recreation. Mrs. Daniel Kane, who has for some years associated with Grailville in Loveland, Ohio, spoke on that subject at an assembly early in the first semester. Mrs. Kane pointed out some of the almost infinite possibilities for family and neighborhood celebrations that reflect the faith of those taking part.

Highest point of the year, as far as Webster's liturgy-learning project was concerned was the three day period of retreat. Father Bernard I. Mullahy, C.S.C. and Father William McAuliffe,



Dot Mullally, prefect



Sodality Board, J. Ritter, L. Reynolds, R. Krebs, J. Hoogstraet, S. Elsey, H. Porter, J. Halbruegger, J. Voss, A. O'Bryan, J. Mattingly, S. Buckler, S. Bader, assemblies for devotions while D. Mullally, prefect, lights the second candle of the Advent wreath.



The more of a saint a woman is . . .

Ideas Flow From National Conference

J. Federer, A. Donati, M. A. Dunsford, H. Pearson, E. Banks discuss the "back to the land" movement with Dr. Nutting after one of his talks given at the Annual Liturgical Week at which these students represented Webster sodalists.



With the help of the *Catholic Art Quarterly* J. Garbacz works on a liturgical linoleum block for the *Web*.



C.S.C. from Notre Dame conducted the exercises, devoting much attention to the perfection of the recitation of the dialogue Mass, and of the chant in the *Missa Cantata*. They included Prime and Compline in the program, held chant practices every day, and ended the third day with a liturgical Holy Hour. The *Missa Recitata* became stronger, more meaningful. Having become acquainted with parts of the Divine Office during retreat, the resident students continued to recite



Mr. Schaefer and one of his chant classes practice for the "*Missa Cantata*."

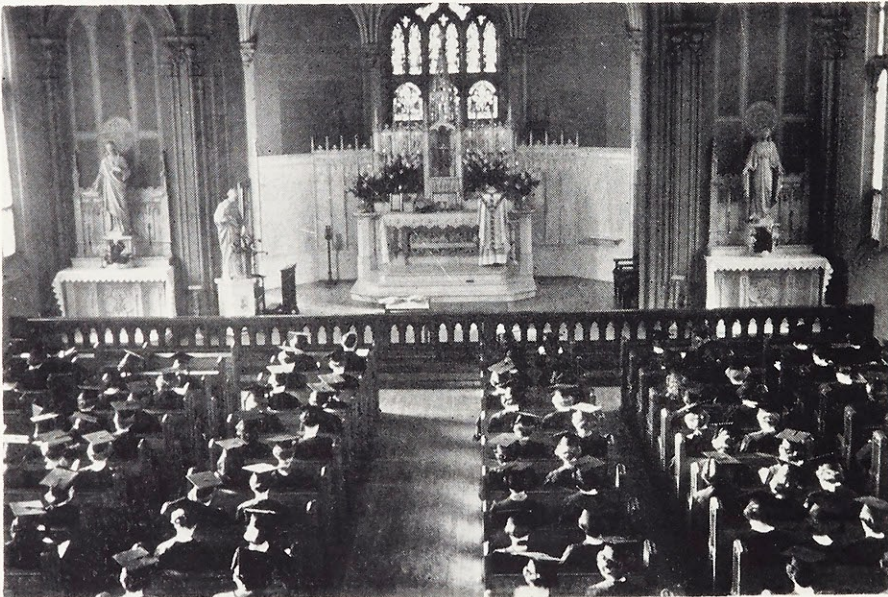
✠ . . . the more of a woman she is.



Notre Dame Priests Conduct Retreats

Prime as thanksgiving after morning Mass. A group of students established the practice of gathering in the residence hall every evening for the recitation of Compline.

Realizing that the beautiful externals of the liturgy are hollow hulls if there be no internal response in the person performing them, the leaders of Webster's sodality planned a program for the year that emphasized individual efforts at sanctification on the part of the sodalists rather than an energy-consuming set of "projects".



Day students ending a day of retreat with Compline. At the suggestion of the retreat masters, Prime and Compline were said each day of the retreat. The climax of retreat — Missa Cantata — under the direction of Mr. George Schaefer was sung by the students. The first two days were begun with Missa Recitata.

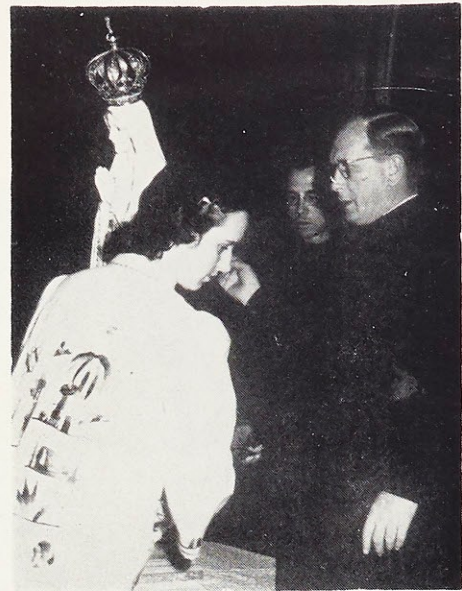


Reverend William McAuliffe, Freshman-Sophomore retreat master, and Reverend Bernard Mullahy, Junior-Senior retreat master, going over the schedule of the day.

✠ *The more of a saint a woman is . . .*

Our Lady of Fatima Visits St. Louis

Sodalists were invited to join one of about a dozen "units" that were set up. Each unit was headed by a sodality board member who acted as chairman, and a faculty moderator. The units, each made up of about twenty members, met twice a month, to study the sodality rules, to discuss coming events in the liturgical



S. Buckler, venerating Our Lady of Fatima statue during the Loretto Holy Hour held at the New Cathedral. Students from Webster, Nerinx Hall, and Loretto Academy were present for the Holy Hour.



year and to work particularly on the fundamental principles of the spiritual life.

The sodality has pointed up liturgical living without in anyway de-emphasizing Marian devotion. One of the high points of the sodalists' year was the visit of the "Pilgrim Virgin" to St. Louis Cathedral in October. Webster united with other Loretto Schools in the city for a special Holy Hour at the Cathedral. Our Lady's Hour



In reply to the plea of Our Lady of Fatima, the day students of Our Lady's Sodality began the recitation of the rosary. They planned to meet each day at 12:45 for the month of October but continued the practice throughout the year.

In order to bring its members in closer contact with its meaning and purpose, the sodality was divided into units with each officer acting as a chairman. Here, a typical unit, with E. Elsey as chairman, discusses daily meditation.

✱ . . . the more of a woman she is

Traditional Crowning Climaxes Year



was held in our chapel once a month, rosary groups of both resident and day students were formed, the musicale was dedicated to Our Lady of Loretto. Climaxing Mariology at Webster was the May-Crowning and installation of officers for the coming year.

Living the liturgy with Mary our model and Mother might best and most briefly characterize the Webster sodality of 1949-1950.

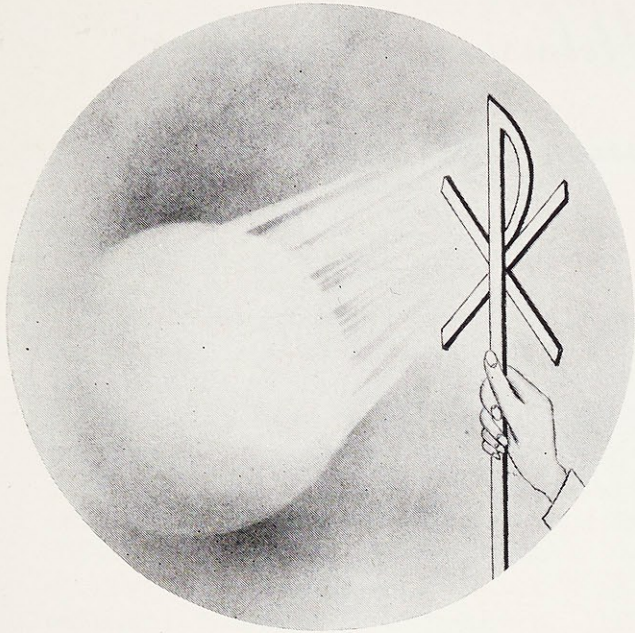


Newly elected prefect of the sodality, D. Mullally, crowns Our Blessed Mother at the annual May Day ceremonies held in the Chapel of All Saints.

After the coronation, the newly elected officers of the sodality walk up the aisle to be formally installed.

✠ *The more of a saint a woman is . . .*

Missions



"Go ye therefore and teach all nations. . ."
Like Christ we must administer to everyone. We must span the distances, reach out to the hungry, the needy, and the flock without a shepherd, to acquaint them with the truth of Christ.

Christianity reaches out to embrace the entire world, the whole human family. It offers the world unity, order, and peace. It is the only power that can successfully cope with the force of evil in the modern world.

Susan Buckler, Mission president, sorts clothes for distribution.

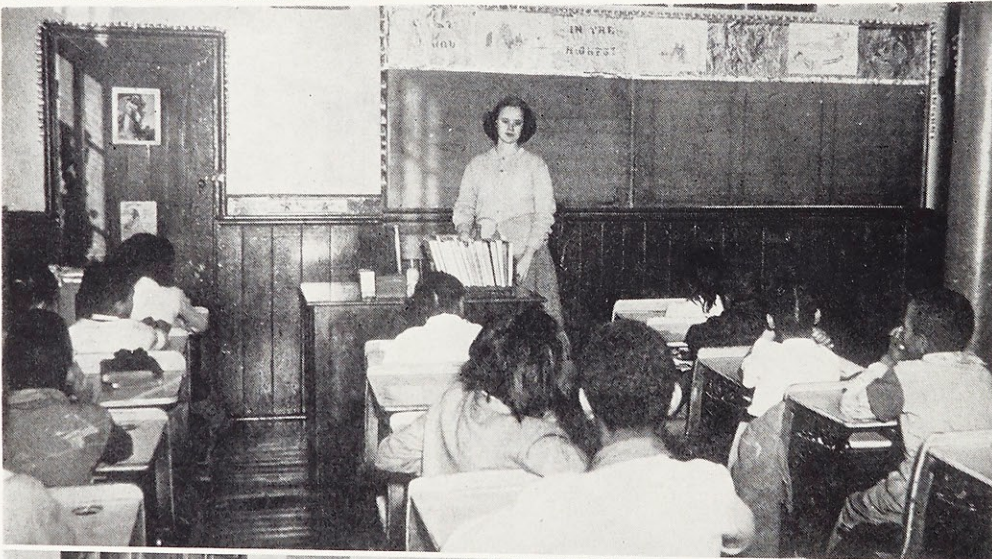


* . . . the more of a woman she is.



Bishop Helmsing Keynotes Mission Activities

His Excellency, Bishop Charles H. Helmsing, Director of the Society for the Propagation of the Faith, speaking to the faculty and students of Webster on the spiritual and material needs of that organization.



Miss Simmons telling interested children at St. Malachy's "Why God Made Them". A group of socialists volunteered to teach Catechism at St. Malachy's, St. Nicholas's and St. Elizabeth's each Sunday.

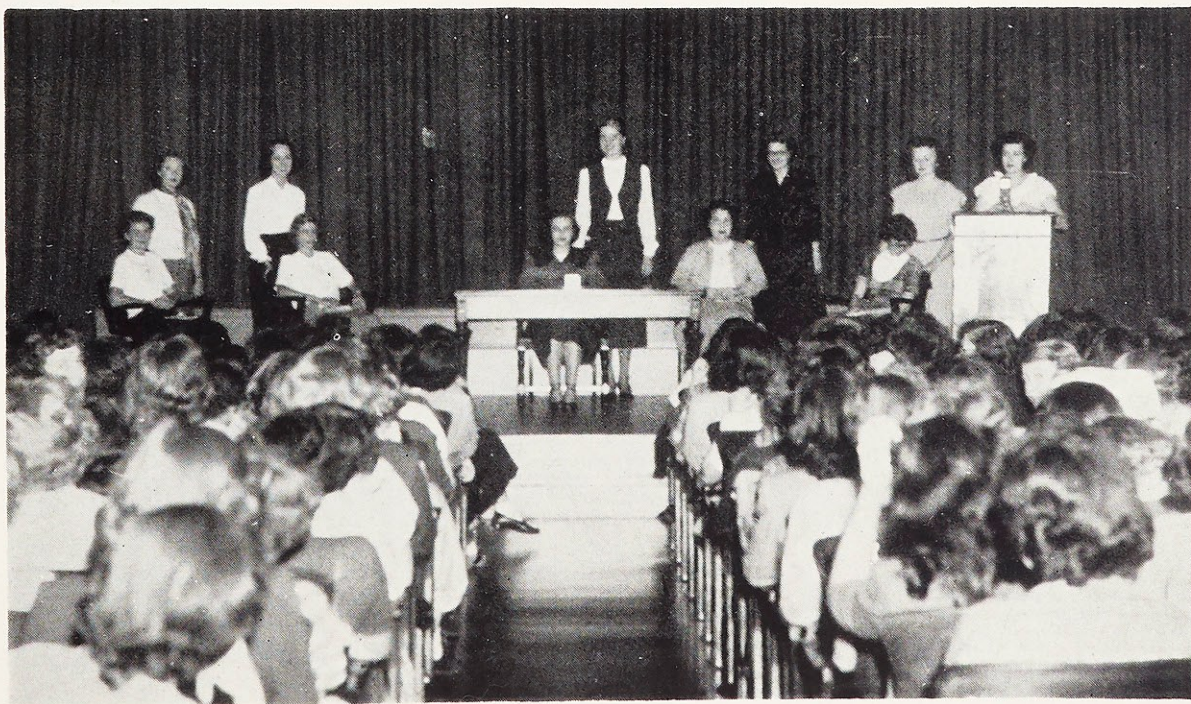
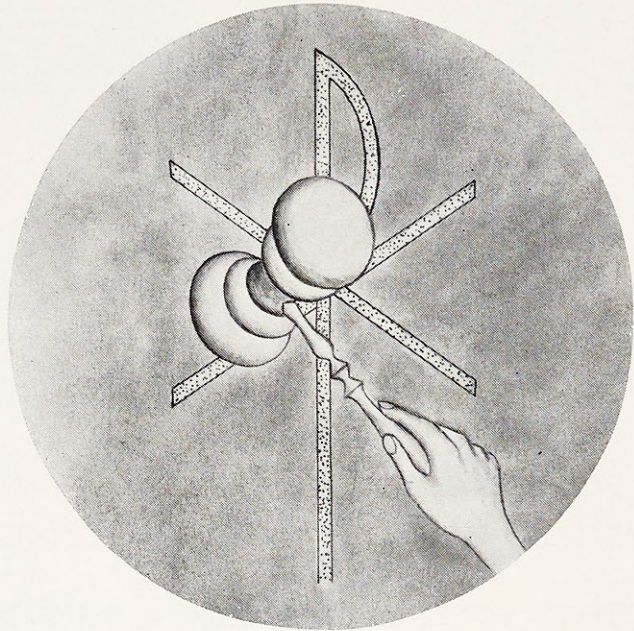


A "Merry Christmas" to the children of St. Malachy's from K. O'Malley, as Santa Claus, and the students of Webster who donated gifts and provided for the party.

✱ *The more of a saint a woman is . . .*

Faculty and Student Government

Students are mutually dependent upon one another. Although this fact flows from the doctrine of the Mystical Body, it may not be immediately evident particularly since individualism is so often a dominant characteristic of today's student. Through the cooperation of the members of the Student Government Association and the Faculty from whom the power invested in the association is delegated, we can come to a vital realization of such an interdependence — that it is the essence of both a true Catholic student community and the attainment of the true end of education itself.



Student-Faculty Institute panels investigate student responsibility and full Christian living.

✱ . . . *the more of a woman she is*

Faculty

- | | | |
|---|--|--|
| <p>SISTER MARIELLA,
S.L., A.M.
Acting President</p> <p>SISTER M. ROSE MAUREEN
S.L., A.M.
Dean of Studies</p> <p>SISTER M. FRANCIS JANE,
S.L., A.M.
Dean of Women</p> <p>SISTER ALEXANDER MARIE,
S.L., A.M.
Registrar</p> <p>REVEREND JOHN W. BAKER</p> <p>REVEREND JEREMIAH CALLAHAN</p> <p>REVEREND FRANCIS M. DOYLE</p> <p>REVEREND GERARD GLYNN</p> <p>REVEREND PETER G. SATTLER,
C.Ss.R.</p> <p>REVEREND SYLVESTER A. SCHIENE</p> <p>REVEREND ROBERT J. SCHWEGEL</p> <p>REVEREND ELMER TOUPS,
C.Ss.R.</p> <p>SISTER MARY CARMELA,
S.L., B.S.</p> <p>SISTER MARY LOUISE,
S.L., A.M., Ph.D.</p> <p>SISTER M. HELEN THERESE,
S.L., A.M.</p> <p>SISTER MARY PAULA,
S.L., B.M.</p> <p>SISTER MARY HARRIET,
S.L., M.S.</p> <p>SISTER MARY FELICIA,
S.L., A.M., Ph.D.</p> <p>SISTER MARY EDMOND,
S.L., A.M., Ph.D.</p> <p>SISTER M. HELEN CLARE,
S.L., M.S.</p> <p>SISTER MARY GERMAINE,
S.L., M.S.</p> <p>SISTER MARY ADELINE,
S.L., M.M.</p> | <p>SISTER MARY FREDERIC,
S.L., A.M.</p> <p>SISTER MARY ROBERTA,
S.L., A.M., Ph.D.</p> <p>SISTER MARY ALPHONSINE,
S.L., B.M.</p> <p>SISTER MARY JOECILE,
S.L., M.M.</p> <p>SISTER MARY CECILY,
S.L., A.B.</p> <p>SISTER MARY BEDE,
S.L., M.M.</p> <p>SISTER MARY JOECILE,
S.S.N.D., M.S., Ph.D.</p> <p>SISTER M. CATHERINE PATRICE,
S.L., M.M.</p> <p>SISTER MARY GREGORY,
S.L., A.M.</p> <p>SISTER EDWIN MARY,
S.L., A.M.</p> <p>SISTER M. FRANCIS de SALES,
S.L., A.M., Ph.D.</p> <p>SISTER MARY DOLORINE,
S.L., A.M., Ph.D.</p> <p>SISTER M. HELEN JEAN,
S.L., A.B.</p> <p>SISTER MARY AUBERT,
S.L., A.M.</p> <p>SISTER THOMAS MARY,
S.L.</p> <p>SISTER MARY CLOTAIRE,
S.L., B.S. of L.S.</p> <p>SISTER M. ROSE VINCENT,
S.L., B.S. in M., C.Ch.C.</p> <p>DOROTHY I. ANDREWS,
A. M.</p> <p>CATHERINE BARNICLE,
A. M.</p> <p>ESTHER McDONALD BROWN,
A. M.</p> <p>DORIS DIEPHOUSE,
A. B.</p> | <p>JOHN DOLLAR,
A. M.</p> <p>ELOISE BARCLAY DU BOIS,
A. M.</p> <p>ELIZABETH LOUISE ETNIRE,
A.M., Litt. D.</p> <p>ANNE MARIE GADAUD-LASNIER</p> <p>ALICE HARPER,
A. B.</p> <p>ANN MARY HEISS,
M. S.</p> <p>MURIEL IRENE HOOGSTRAET,
A. B.</p> <p>LISBETH EBERS HOOPS</p> <p>ANNE H. JENNINGS,
A. M.</p> <p>NORA JORGENSEN,
A. M.</p> <p>HARRY RICHARD McCLAIN,
LL.B.</p> <p>FRANCES McCURDY,
B. S.</p> <p>CARL J. MADLINGER</p> <p>THOMAS J. MAGNER
A. M.</p> <p>MICHAEL F. MANLEY,
LL.B., A.M.</p> <p>NELKA C. MOONEY</p> <p>HELEN M. PECH,
Ph.B., B.M.</p> <p>JEANNINE PICHE</p> <p>ANNA McCLAIN SANKEY
A. B.</p> <p>GEORGE SCHAEFER,
B.L.M., C.Ch.C.</p> <p>JEANNE HIGGINS SCHALLER,
A. B.</p> <p>CONSUELO URIBE WISE,
A. B.</p> |
|---|--|--|



The more of a saint a woman is . . .



DOROTHY WELSH
Mattoon, Illinois
Athletic Association President
A. B. in Physical Education



ANN GEORGE O'BRYAN
Owensboro, Kentucky
Hall President
A. B. in Sociology



DOROTHY IRENE THOMAS
East St. Louis, Illinois
Senior Class President
A. B. in Sociology

Senior Members of the Association



DOROTHY ELLEN MULLALLY
St. Louis, Missouri
Sodality Prefect
A. B. in English



JO ANN RITTER
Louisville, Kentucky
Student Government President
B. S. in Music

* . . . the more of a woman she is.



ROSE MARY COLLINS
 Webster Groves, Missouri
 A. B. in Sociology

MARIE KELLY CARROLL
 St. Louis, Missouri
 A. B. in English



VIOLET IRENE BALL
 St. Louis, Missouri
 A. B. in French

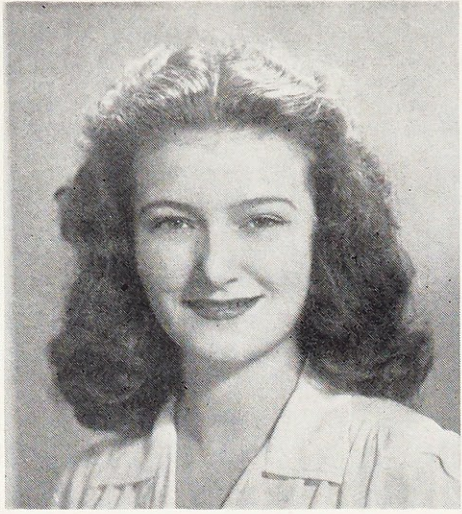
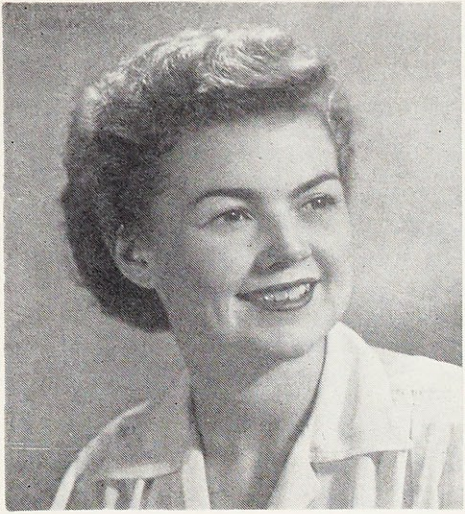


MARY VIRGINIA COOPER
 Clayton, Missouri
 A. B. in English

PATRICIA JEAN CRONIN
 Kirkwood, Missouri
 A. B. in Mathematics

ANGELA GLORIA DONATI
 St. Louis, Missouri
 A. B. in French

* *The more of a saint a woman is . . .*



MARY ANN DUNSFORD
 St. Louis, Missouri
 A. B. in English

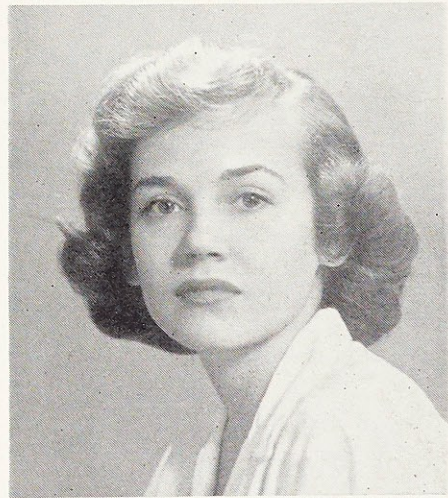
ELIZABETH M. GRACE
 St. Louis, Missouri
 A. B. in English

ANITA GIANNATELLI
 Mobile, Alabama
 A. B. in History

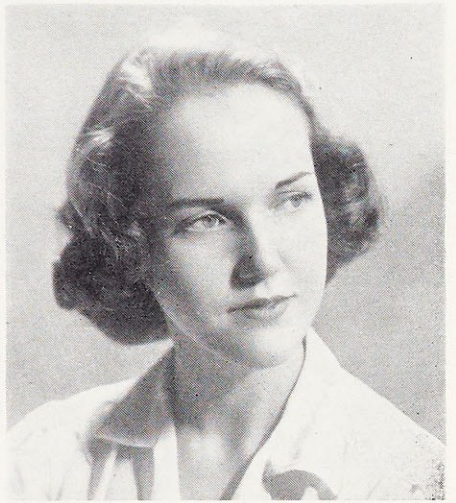
MARIA GONZALEZ
 Lares, Puerto Rico
 B. S. in Biology

DELORES CECILIA GREEN
 St. Louis, Missouri
 B. S. in Music

JOAN HIGGINS DUFNER
 Hermann, Missouri
 B. S. in Biology



* . . . the more of a woman she is.



MARY ELIZABETH HELLWIG
St. Louis, Missouri
A. B. in Speech

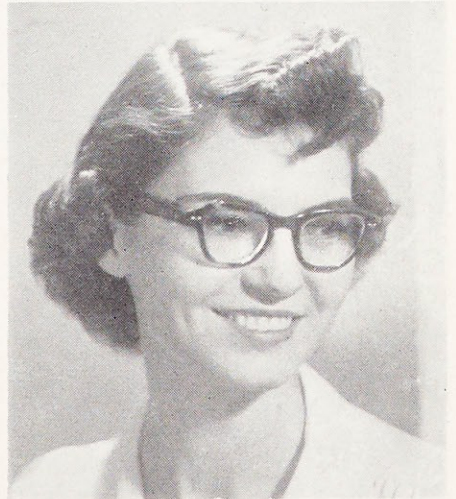
MARY JANE HIGGINS
Kansas City, Missouri
A. B. in Elementary Education



JACQUELINE MARY HELLMAN
St. Louis, Missouri
A. B. in English

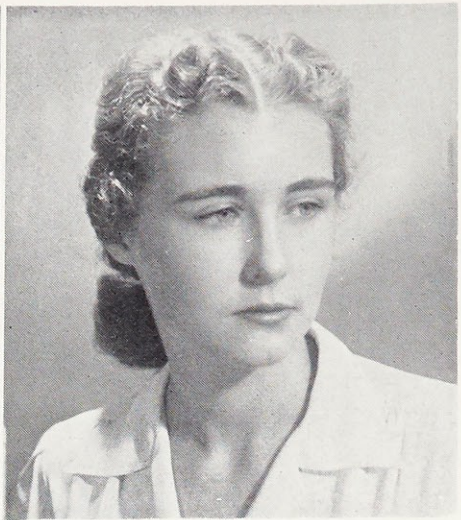
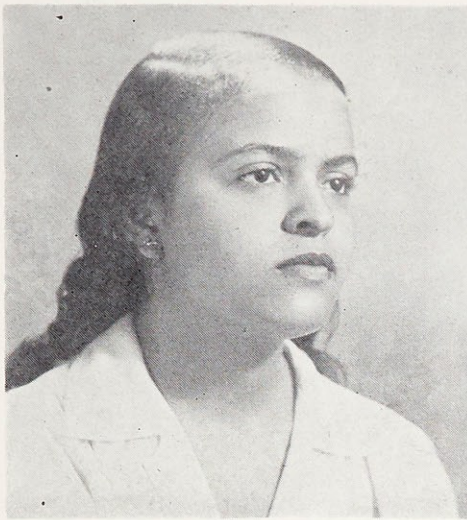
MARY LEE HOLLAND
St. Louis, Missouri
A. B. in English

ADELE M. HEUMANN
St. Louis, Missouri
B. S. in Dietetics



BERTHA ANNE HENRY
Colorado Springs, Colorado
A. B. in Sociology

* *The more of a saint a woman is . . .*



JEANNETTE M. JACKSON
 St. Louis, Missouri
 A. B. in Sociology

ANN BEACH KEEFER
 Park Ridge, Illinois
 A. B. in Art

MARIANNE JULIUS
 Kirkwood, Missouri
 A. B. in Mathematics

MARY ELLEN KELLEY
 St. Louis, Missouri
 A. B. in English

MARY PAT KEHOE
 Evanston, Illinois
 B. S. in Dietetics

ANNA MAE KELLOGG
 Linn, Missouri
 A. B. in English



* . . . the more of a woman she is.



MARY LOUISE MEYER
St. Louis, Missouri
B. S. in Mathematics

MARGARET JEANNE MEYROSE
St. Louis, Missouri
A. B. in Elementary Education

MARY ANN LAKIN
St. Louis, Missouri
A. B. in English

MARIAN KIENZLER
Springfield, Illinois
A. B. in Art

ANNA M. KRAFT
New Albany, Indiana
A. B. in French

GEORGIANNE McVAY
Fort Smith Arkansas
A. B. in English

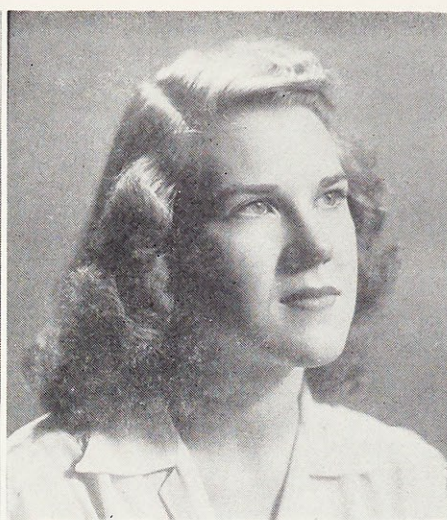
* *The more of a saint a woman is . . .*



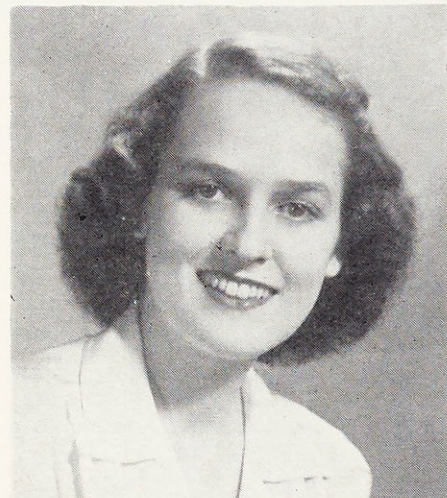
PAT PAUL
St. Louis, Missouri
A. B. in Dramatics



JUNE HELEN MURPHY
St. Louis, Missouri
A. B. in Speech



JEANNE YVONNE RENO
St. Louis, Missouri
B. S. in Music



ARMALIE MOTT
Mobile, Alabama
A. B. in Sociology



KATHLYN T. MOORE
East St. Louis, Illinois
A. B. in Sociology



MARY A. S. NORRIS
West Monroe, Louisiana
B. S. in Dietetics

* . . . *the more of a woman she is.*



MILDRED RIFFEL
Moberly, Missouri
A. B. in Sociology

MARILYN ANN SMITH
Normandy, Missouri
B. S. in Biology

RITA MAE SLOAN
Morrisonville, Illinois
A. B. in Sociology

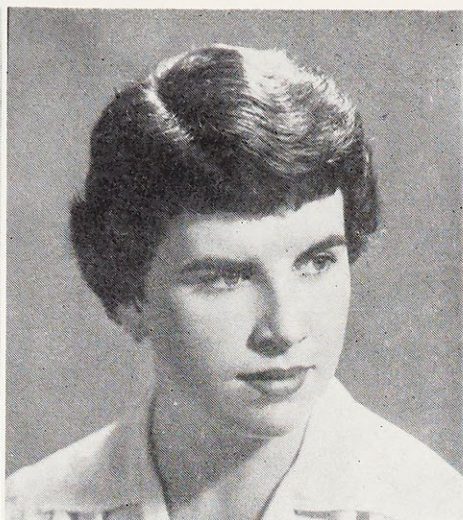
IRENE JANET THOMAS
Webster Groves, Missouri
B. S. in Music

LOIS MARGARET STUEVER
St. Louis County, Missouri
A. B. in Mathematics

LORETTO MAY REYNOLDS
Rockford, Illinois
A. B. in Elementary Education

SISTER PAUL MARIE, S.S.N.D.

* *The more of a saint a woman is . . .*



PATRICIA ANN WHITTINGTON
 Moberly, Missouri
 A. B. in English

MARGARET ANNE WOLFE
 Clinton, Iowa
 A. B. in Art

MARY THOMAS WOOLLARD
 Columbia, Tennessee
 A. B. in English

JOYCE M. VOSS
 St. Louis, Missouri
 B. S. in Music

ROSALINE H. SHEN
 Shanghai, China
 B. S. in Mathematics

JULIANA L. TUNG
 Chungking, China
 B. S. in Music

SISTER MARY TOLENTINE, S.S.N.D.



* . . . *the more of a woman she is.*



Standing:

M. Julius, M. Meyer, J. Dufner, R. Shen, L. Stuever, P. Cronin, M. Morris, A. Heumann

Sitting:

M. Smith, M. Gonzalez, M. Kehoe.



Back Row:

M. Riffel, R. Collins, D. Welsh, D. Thomas, K. Moore, A. O'Bryan, B. Henry

Front Row:

A. Mott, R. Sloan, A. Giannatelli, I. Jackson

Majors Prepare for Catholic Living

Webster College prepares her graduates for integrated Catholic living after graduation. She prepares them to be Catholics not only on Sundays but every-day-in-every-way Catholics. No matter in what field the student specializes the answer is the same. Whether she graduates with a B.A., a B.S., or a B.S. in Music, she has been trained to think, to act in a Catholic way.

Studying literature, in our own language and in that of other countries presents an opportunity for an analysis of the great works of all times and peoples. This analysis of life, of

motive and action is made according to Christian principles. The practice of so judging will carry over into the life we live, as we have seen it through the written word.

The mind of the Webster College student is developed to reach generals and truths; it is trained to appreciate the ultimate truth which is God. The mathematician derives necessary conclusions from given premises. This we do everyday in solving everyday problems. Consciously or unconsciously, she applies this method of truth in Christian principles to reach the

✠ *The more of a saint a woman is . . .*

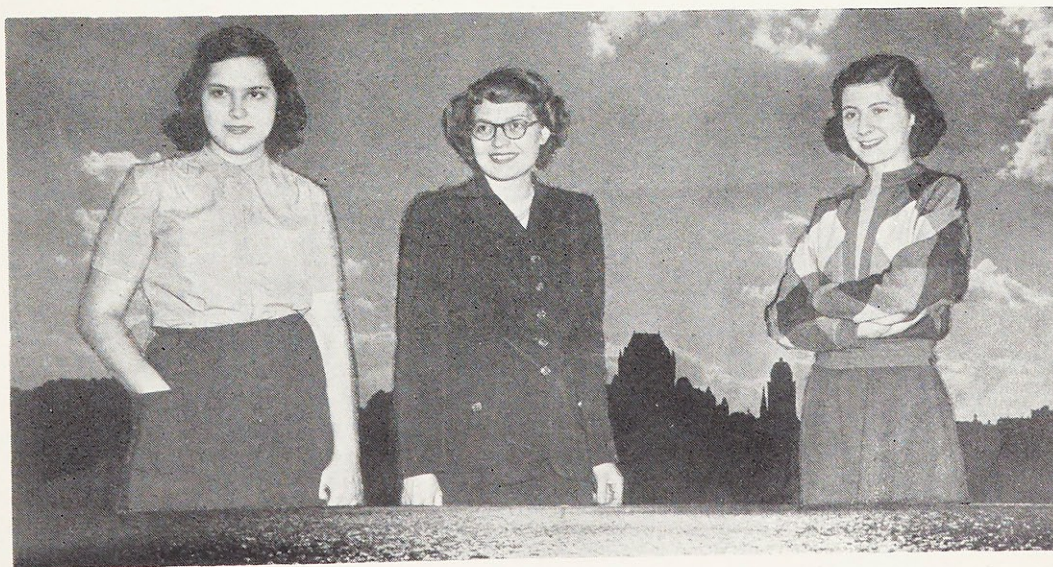
M. Hellwig,
 P. Paul,
 A. Keefer,
 J. Murphy,
 M. Kienzler,
 M. Wolfe



right solutions. Through training in speech with a Christian outlook or viewpoint she presents her ideas effectively whether it be in the political or economic fields, the scientific or social spheres. Through the study of history the Webster student realizes that the present is Godless rather than God-like. She recognizes the need for action in her vote, in her job which may be in government or educational fields. The study of cause and effect provides a better knowledge of the first cause, which is God. The student sees the close association between philosophy



I. Thomas, J. Tung, J. Ritter, J. Voss, J. Reno, D. Green



A. Donati, V. Ball, A. Kraft

* . . . the more of a woman she is.

and the theories of life in biology. This connection of science and philosophy is a knowledge which will carry over into Christian living.

The student is prepared to take her place in society and fulfill her Christian responsibilities to the best of her ability. Sociology concentrates on an analysis of contemporary problems of labor, economics, and marriage. Faith is coupled with science, whose findings are perfected and strengthened by Revelation. The graduate who has majored in sociology recognizes as false the principles on which such practices as "keeping up with the Jones" are based; the fallacy of "live for today, there's no tomorrow." She has been trained to make her home a Catholic home, to rear her children for the honor and

glory of God, and to be an exemplary wife and mother.

Art reflects the feelings of people. The art student, in her own way, can portray Christian principles through the mediums of paint and brush. She will create attractive and modest clothes for the women of her world to wear and protest strongly to the increase in immodesty of the "modern" world.

Over and over again the words observe, judge, and act are reiterated. This is how the student, no matter what her particular field, utilizes her Catholic education. She has learned how to carry on these basic processes in a Catholic way, to be a Catholic everyday in every way.



J. Higgins, L. Reynolds,
M. Meyrose



Last Row: M. Woollard, A. Gadaud-Lasnier (University of Paris), D. Mullally, M. Lakin. Second Row: G. McVay, M. Kelley, M. Carroll, M. Dunsford, E. Grace. First Row: V. Cooper, A. Kellogg, J. Hellman, M. Holland, P. Whittington.



The more of a saint a woman is . . .

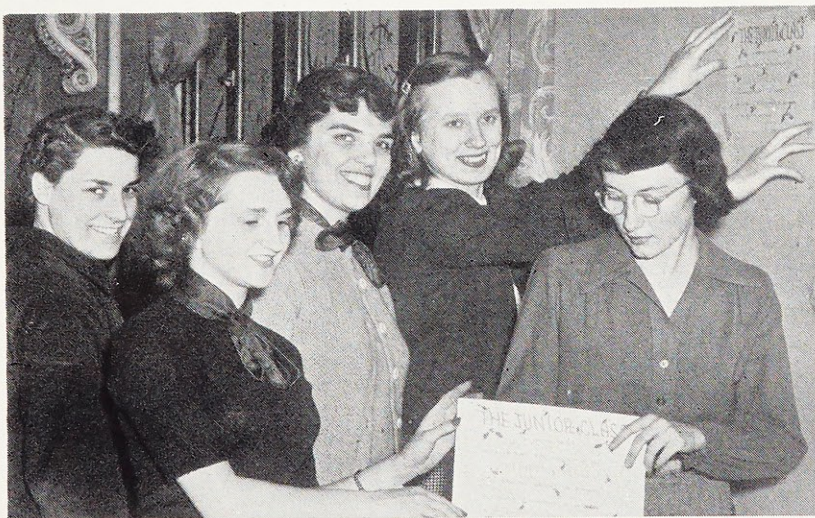
Junior S. G. A. Members are Hostesses For Christmas Festivities

Cooperation keynoted Junior class activities. Leaders Shirley Elsey, Mary Fran Schaeffer, Alma Monnig, and Mary Alice Franzman guided the class through the maze of work accomplished by the Juniors. Faculty representative Francis Catanzaro and class representatives Joan Boone and Kathleen O'Malley served the student government in varied capacities.

Major event of the class was the Christmas entertainment. The decision to attempt to christianize the decorations was manifested in the use of symbols in the colonnade and in the crib scene in the



Julia Malapit, Ann Mae Donnelly, Mary Jo Van Brunt, Shirley Elsey



Marilyn Ruebling, Mary Schlotterbeck, Ruth Schumacher, Jeanette Jablonski, Elizabeth Grant.



Jacqueline Crawford
Patricia Gits,
Mary Frances
Stevinson,
Harriet Porter,
Lucy Lee

✱ . . . the more of a woman she is.



Kathleen O'Malley, Jeanette Fresenburg, Mary Alice Franzman, Shirley Bader, Helen Pearson



Barbara Klaholt, Alice Mary Casey, Thelma Massery, Marian Mazzoni, Helen Manion

Sybelline Doyle, Louise Gioia, Mary Ellen Kilker, Judith Mobley, Mary Lou McFadden, Jean Nifong, Doris Zoellner



Susan Buckler, Joan Romey, Joan Boone, Rose Ann Sloan, Jean Mattingly

* *The more of a saint a woman is . . .*

reading nook. Other rooms represented Currier and Ive's etchings. Handling decorations, banquet, carol singing, programs, senior pin ceremony and faculty "take off" skit was a full time job and only unity and enthusiastic cooperation brought success for the class and Christmas joy to the hearts of all Websterites.

Queen Mary Therese Lavery, Park's representative, was crowned at the Harvest Festival sponsored by the St. Louis Sodality Union.

Cooperation and an enthusiastic spirit again served the Juniors when they vied for athletic honors. The laurels went to their class team in both volley ball and basketball.



Dorothy Richter, Dorothy Scott, Delores Yates, Margaret Stenger



Mary Jane Wieck,
Mary Fran Schaeffer,
Mary Therese Lavery,
Frances Catanzaro,
Margaret Richardson



Alma Monnig,
Catherine Higgins,
Donna Stiebel,
Peggy Houseman

* . . . the more of a woman she is.

Sophomore Members Featured in Classes



Miriam Reedy, Joan Federer, Virginia Feeney, Carol Gebhart, Joan Hoogstraet, Margaret Schoenfeld, Catherine Baine, Rita Krebs, Helen Snook, Lois AuBuchon



Marilyn Toeniskoetter, Elizabeth Jones, Jean Kelley, Joan Welsh, Joyce Baber, Mary Lou Cross, Geraldine Washington, Joan Dubuque, Jeanne Devereux, Elizabeth Ainsworth, Eileen Franke, Mary Ellen Downey



Standing:

Patsy Lee Kelley, Joan Bulte, Elizabeth Ratermann, Barbara Meyer, Odalie Wittges

Sitting:

Mary J. Klein, Patricia McQuie, Patricia Higgins, Joan Graser, Marilyn Reed, Martha Abbott, Mary Abbott, Mary Jean Wood, Mary L. Rausch

"Learn, O Christian, thy dignity!" This is what the Sophomore class is trying to do as they dip into the mysteries of logic, attempting to develop right-ordered minds; as they examine ancient civilizations making comparisons and contrasts; and as they immerse themselves in the channels of grace striving to live life on a supernatural plane.

* The more of a saint a woman is . . .

Standing:

Mary H. Reis, Rita Rinker

Sitting:

Leslynn Benson, Joan Schuler, Dorothy Willard, Rose Marie Kribs, Sara Sarullo, Judith Tinker, Elizabeth Barsanti, Elaine Temme



Mary Saracini, Margaret Kolasch, Joyce Theivaqt, Mary Polanek, Dorothy Fisher, Ruth Slicker, Jo Ann LeCompte, Margaret West



Standing:

Mary L. Holzem, Priscilla McCann, Paula Garvin

Sitting:

Marianne Kosakowski, Patricia Meyer, Alice Ehemberger, Mary L. Grashoff, Dolores Depke, Janet Landzettel, Adrienne Goldstein, Mary J. Hillner



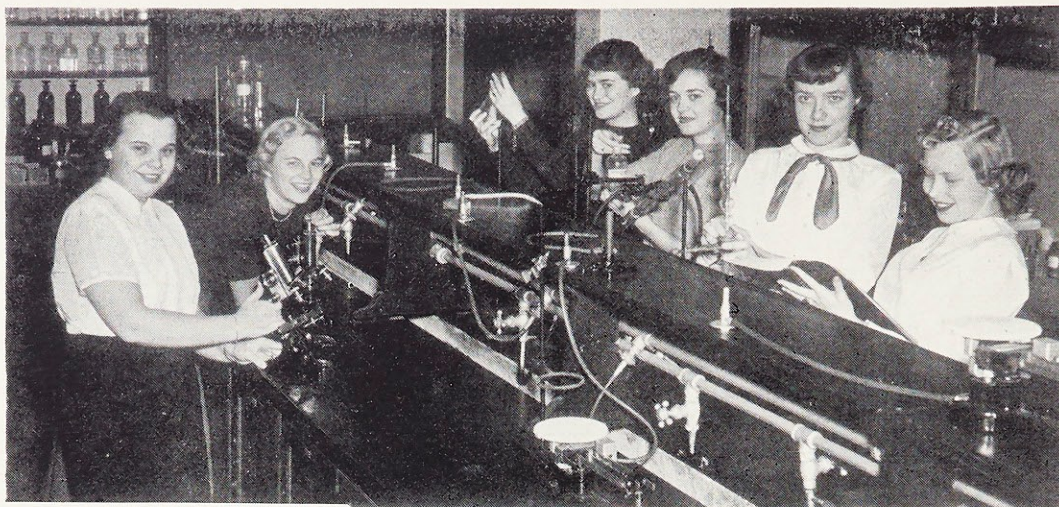
Liturgical-minded Betty Ann Ratermann, class president, was assisted in her executive position by Paula Garvin, Patricia Kinsella, Juanita Brungardt, and Mary Jo Klein.

Favorite with the Sophomores are the Humanities course and the Introduction to Sociology.

In the interests of group recreation the Sophomores, under the leadership of Joan Federer, sponsored a square dance on St. Patrick's day. Calling it the "Shamrock Shuffle" they invited all classes to the gym for an evening of fun.

* . . . the more of a woman she is.

Beverly Fiorella,
Gretchen Oberste,
Billie Smith,
Irene Wiggins,
Patricia Kinsella,
Barbara Meier



Ann Blandford,
Rosemary Fuesting,
Marian Sly,
Rita Guthrie,
Joan Dickhaus,
Patricia Walsh,
Elizabeth Banks,
Mary L. Ganley



Jean Gerke, Jucnita Brungardt, Janet Garbacz, Barbara Faure, Martha Belcher,
Jane Baute, Mary J. Ritayik, Elizabeth Compton.

Joan Harrington, Anne Shaub, Martha Wilbern

The theory of group cooperation was made practical when the Sophomores were hostesses at the June Banquet.

While the banquet is the major activity of the class, their members were active participants in a number of enterprises. Irene Wiggins was Webster's candidate for Queen at the Sodality Union fall festival, and Elizabeth Compton, Rita Krebs and Jo Ann LeCompte gave their support to good Christian drama by accepting roles in the University's production of **The Song of the Scaffold**.

✱ *The more of a saint a woman is . . .*

Freshmen Members Introduce Themselves



Grace O'Bryan, Judith Herman, Ruby Novak, Mary A. Spalding, Emily Byrne, Carol Shipley, Virginia Sartorius

The doors of Webster opened in September to Freshmen eager to make a good start in their college career. Upper classmen prepared a week of orientation for the newcomers to make them feel more at home in their new surroundings.

Aided by an advisory board composed of June Murphy, Margaret Kolasch, and Kathleen O'Malley, the Freshmen started out to prove to their "big sisters" their abilities as a unified group.

The Halloween Party provided their first opportunity. Since class officers had not yet been elected, a committee composed of eight Freshmen nominated committee chairmen.

Quiet, capable Carol Shipley was chosen to oversee the event.



Rosemaria Henry, Patricia Beetz, Mary Agnes Geisman, Barbara Cronin, Elizabeth Denvir, Helen Holcomb

Last Row: Rose Mary Hesseldenz, Jo Ann Gualdoni, Janet McCormack

Second Row: Marilyn Heggeman, Martha Cummings, Jacqueline Cooper, Marie Rosenthal, Cecelia Waddock, Marian Cook, Kathleen Barnicle

First Row: Dolores Winkler, Mary L. Buchanan, Suzanne Henniger

* . . . the more of a woman she is.



Standing: Rose Sacchi, Pat Klaric, Ernestine Jordan, Judith Tarman, Mary Lutz, Mary A. Lopez, Joan Wilbert, Carolyn Ryan, Mildred Worthington, Eileen Moroney, Geraldine Legner, Cora Waye. Sitting: Rose Marie O'Klock, Margaret Fiorella, Mary Susan Woestman, Phyllis LaPee, Leatrice Barbazon, Rosalie Koziattek.



Virginia Jensen, Monica Hegarty, Antonia Gonzales, Martha Nischan, Mary A. Westerman, Mary Haberl.



Carol Fehrman, Norma Ringhausen, Ann Ehrenberger, Margaret Fox, Evelyn Born, Dorothy Franke, Aline Rodman, Mary Ann Schrader, Emily Goodpastor, Jane Donnelly.

✱ *The more of a saint a woman is . . .*

Juanita Lattier, Claudia La Marre, Joan Morris, Patricia Reisch, Patricia Price, Patricia Nebor, Clarissa Parsons, Elizabeth Schubert, Nancy McHugh, Margaret Thro, Katharine Sweetin



Frances Kelly, Barbara Algee, Janet Ludwig, Shirley Kinsella, Barbara Balfay, Marion McDonald, Joan Murphy, Ruth Johmann, Beverly Balfay, Helen Kowalski, Marilyn Heckwolf



Standing: Jeanne Sandbrink, Mary L. Schulte, Kathleen Lyons, Cora Waye, Virginia May, Ann Long, Nancy Auringer, Jeanne Kiely. Sitting: Dorothy Nelis, Frances Sailor



In November class elections were held. Soft-spoken, Mississippian Ann Long was elected president and vivacious, dark-haired Joyce Buckler was chosen to represent the group on the Student Government Board. In capacity of vice-president is apostolic-minded Mary Ann Westerman; Marion McDonald from the Blue Grass state, and blond, twin Beverly Balfay write the minutes and balance the budget.

The Freshmen have stressed continually personal and group responsibility. Their early participation in the Student-Faculty Institute and later classes and discussion groups opened to them the possibilities of the development of a full Christian personality.

* . . . the more of a woman she is.



Standing: Marjorie Slicker, Mary Woods, Marilyn Hellman, Mary Ann Soraghan, Mary Claire Burke, Jo Ann Misita, Gloria Nagem. Sitting: Joyce Leppert, Mary Cleary, Kathryn Kirchner, Joan Seiffertt.



Standing: Maud Martineau, Nancy Hanby, Therese Kelly, Virginia Temme, Patricia Kelly, Joan Mazurek, Cynthia Dolson. Sitting: Sharon Brignole, Alta Royal, Joan Halbruegger, Margaret Cahill.



Standing: Joan Bussmann, Joan Lagomarcino, Marlene Klepfer, Patricia West, Mary Ann Ceriotti, Joan Buehler, Barbara Burgett, Joyce Buckler, Margaret Trelford. Sitting: Clara Carroll, Mary Lou Brand.

Kathleen Condon, Rosalie Curran, Alice Downs, Kathryn Geile, Mary A. Harrington, Anne Hewitt, Mary Ann Knoll, Nancy Manne, Annette Nofles, Joanne Powers.

Believing that Freshman Week was the best possible way to prepare Freshmen for potential leaders this class assumed the duties of the upperclassmen for a week; thereby acquiring a greater appreciation of Student Government.

A combination of elements designed to produce an integrated being has begun to make Freshmen realize their important role as Catholic College women and their obligation to bring Christian ideals into everyday environment.

✱ *The more of a saint a woman is . . .*



Student Government Board meets in Council Room. President J. Ritter presiding.
Seated: M. J. Klein, K. O'Malley, J. Boone, J. Reno, M. Catanzaro, D. Thomas,
D. Welsh, D. Mullally.

Standing: J. Buckler, S. Elsey, A. O'Bryan, J. Ritter, J. Higgins, A. Long.
Missing: B. Ratermann.

Student Government Board



Ready at last, Loretto Heights bound delegates wait for cabs to take them to the station. At Loretto Heights both colleges exchanged ideas on the N.F.C.C.S.

✱ . . . the more of a woman she is.

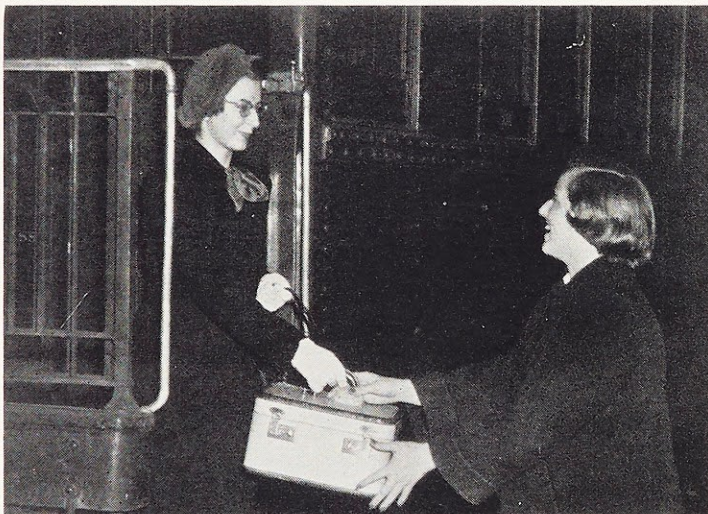
Freshmen Orientation

The Student Government Association plays a large part in integrating Catholic life and activities on campus. It is the organ created by student initiative and preserved by student responsibility whose function is to regulate social and disciplinary life on campus, and social affairs given in the name of the college. Its aim is to maintain and forward ideals of cooperation and service on the part of all students toward each other and toward Webster. In this cooperation we endeavor to serve God and our neighbor as members of the Mystical Body of Christ.

Our association is composed of all Webster students, who elect representatives to the student government board. The Faculty elects two representatives, and from this combined group, come the association officers. Included on the board, which is moderated



"What do I want from college?" Virginia Sartorius of Garden City, Kansas, in a letter to her counsellor tells what she wants from college and in what way her counsellor can be of help.



Ann Keefer, on hand at Union Station, gives Ann Long, of Vicksburg, Mississippi, a hearty welcome to Webster. Ann was later on elected president of the Freshman class.



A pre-registration interview with all freshmen helped orient them to campus life. Sister Rose Maureen counsels Patricia Beetz about her schedule and assigns her classes.

✱ *The more of a saint a woman is . . .*

by the Dean of Women, are Presidents of the Hall, the Athletic Association, the classes, and the Sodality Prefect. These girls, along with the various representatives, make up the fifteen members of the administrative body. So, all students, undertaking the responsibility of self-government, are an actual example of democracy. With faculty approbation, we act from the student, by the student, and for the student.

Our aims have remained the same since the organization came into being in 1928, but the progress in growth and extrinsic change is evident. Each year we strive, not only to continue the cherished tradition of the past, but to improve. Be active, emanate your Christian principles rather than passively safeguarding them.

Improve! For this end the Student-Faculty Institute was established. This year its topic was individual responsibility. Panels, composed of students under the chairmanship of faculty members, presented the Freshman opinion of what they expected to receive from Webster, spiritually, intellectually, and socially, and the upperclassmen replied. The floor was opened to discussion and resolutions were adopted.

Prior to this the Student Government had sponsored Freshman Orientation which consists mainly in a vital week in the life of the eager, earnest and expectant new-comer. The Freshmen are initiated into college life with a week of activities designed to provide an opportunity for mingling, becoming acquainted and "at home." The day hops had already met at a picnic given during the summer, and the resident students first meet socially at dinner at Van Horn's and a movie at the Ozark. A sodality-sponsored day of motivation brings to mind the purposes and advantages of a Catholic College education. Following in quick succession are the Fashion Show with student models, an informal party for Freshman boarders, and the Moonlight Serenade. At this dance in the Pink Room, Freshmen are introduced to St. Louis's most eligible bachelors, or, St. Louis University men. The Pink Room is also the scene of the Freshman-Faculty reception on Sunday evening, at which time instructors and students meet. On Monday, when the upperclassmen have joined the back to school throngs, Big Sis-Little Sis party together, and the "just met her at the train, plane" relation develops into sisterly friendship. In this first week of intense activity, the Student Government Association having prepared during the summer, begins to function and demonstrate the Webster spirit for which our college



"Welcome to Websterville." Big and little sisters become acquainted over candied apples.



An evening at home, singing school songs and meeting new people.



A tea dance in the Pink Room starts the social life of the new Websterite.

✱ . . . the more of a woman she is.

Broad Range of Student Government



is well known. This spirit of loyalty, friendship and cooperation receives its first Freshman proof in the Halloween party they give for the entire student body.

The newcomers showed what they could do and joined us in illustrating what the Webster spirit could produce on a grand scale — the Loretto Fall Festival. Our part in this project to decrease the debt on the Loretto Gymnasium, was the Kiddie Carnival. A student chairman, Pat McQuie, was elected and she and Sister M. Francis de Sales busied hands with crepe paper creations and stuffed dolls. Fish pond, movies, circus, Hall of Horrors, raffles and sweets to delight the Loretto grade school boy and girl, gave them two sunny afternoons of fun, and the students a job well done.

Again adding pleasure to a serious purpose, was the trip to Loretto Heights College, Denver. Here twelve of our girls exchanged ideas, information and suggestions with our sister college, at the same time enjoying the beauties of a mountain chalet and the



The big moment at last. Dot Thomas, president of the Senior class, receiving her class pin from Reverend' Peter Sattler C.S.R. at the Christmas Banquet.

House Committee meets with hall president, A. O'Bryan, to discuss next boarder's meeting. Members of the committee are M. A. Spradling, A. O'Bryan, R. A. Sloan, M. L. Cross, A. Kraft.

L. AuBuchon, secretary, reads the minutes of the last meeting of the Co-ordinating Council — a council formed to keep students and advisors of all organizations informed on all campus activities.

✠ *The more of a saint a woman is . . .*

S. G. A. Supports The Fall Festival

fun of a crowded weekend. One of the projects discussed, was the Co-ordinating Council. This is a group, which consists of the officers of all campus organizations, publications and standing committees is presided over by the vice-president of S. G. A. It acts as a clearing house for the various groups, for the NFCCS which has a direct contact with student leaders, and points out the interdependence of departments and schools.

At Christmas time the Student Government functioned in presenting through its president and faculty representatives, a petition to the Executive Board. This petition, signed by the majority of association members, sought a longer Christmas vacation. It was graciously granted. This is certainly an example of the genuine bond between the faculty and students, and the effectiveness of the association.

A major project of the year is the Musicale. Pat Paul, and her assistant, Jean Mattingly, directed a very successful production entitled, **There Go The Girls**. The theme was 1904, when Webster was the Loretto Seminary for Girls, and student cast and public enjoyed the result of cooperative effort. The profits from this venture are divided among publications, the Athletic Association, and principally, the Overseas Service Program. This NFCCS project provides relief for needy foreign students. A more personal expression of this interest in our friends overseas is the money regularly collected for an exchange

student who was with us last year and who has returned to Austria. The committee which handles this is headed by Alice Mary Casey.

The weekend of the Musicale was especially exciting for the boarders. Out-of-town mothers and dads came to St. Louis for the show, the sodality's Mother-Daughter brunch and the Men's Club Father-Daughter banquet. The brunch was an innovation and all are looking forward to just such a family week-end in the coming years.

In March the association conducts Hey-Day and name-tagged students vie for prizes which are awarded for the most original name-signs. Suzie discovers that Googan is Googan and not the girl she's been calling by that name all the rest of the year. The St. Patrick's Day party is another big sister-little sister affair, the Freshman providing the entertainment; the big sisters bringing the lunches to celebrate "the wearing of the green."

During Freshman Week, their class now thoroughly orientated as members of student government, the Freshman take over the administrative phase of the organization, conduct the various meetings and edit the school paper. Joyce Buckler was elected Freshman Week student government president and assumed the responsibilities of that office.

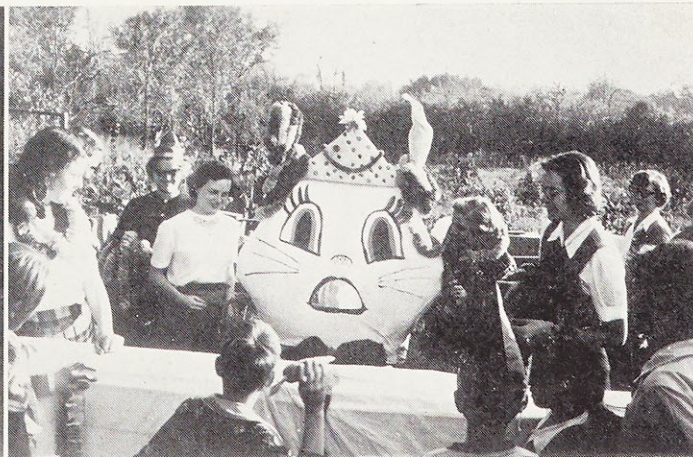
Given the opportunity through student government to become active leaders and participators, to become aware of the responsibilities which we must carry as Catholic women with Catholic College educations, we are prepared to leave Webster and emanate Catholicity in a secular world; to be active, rather than passive Catholics, to rise above mediocrity — this is our individual responsibility.



Dolly Wittges teaches some of her helpers how to make leis for the booths.



Super salesman going out to sell chances on the Ford raffled Sunday night.



Pat McQuie, chairman of the Fall Festival, watches the rabbit booth at the children's carnival.

* . . . the more of a woman she is.

"There Go The Girls"



Musical co-chairmen P. Paul and J. Mattingly go over the score for **By The Sea** — a big hit in the show.

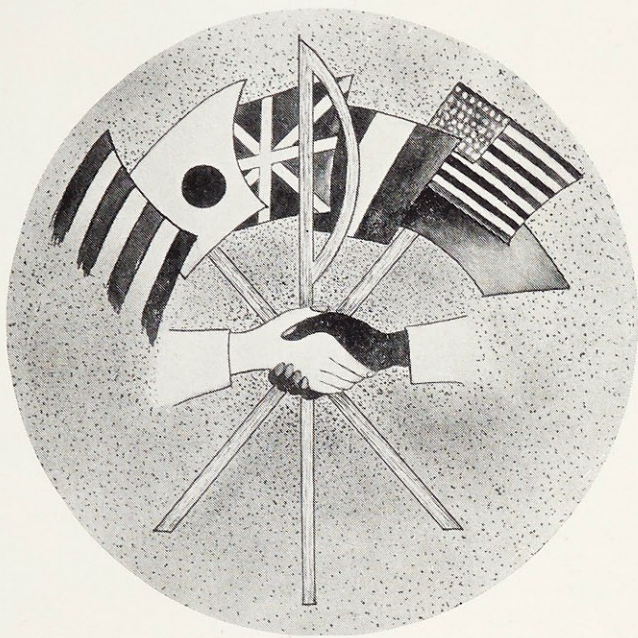


Strike three you're out! Ruth Schumacher supervises a strenuous ball game much against the will of the lady-like students of Loretto Seminary.

"Hello, my honey." "Telephone and say that I'm your own." **Hello My Baby** chorus from musicale, **There Go The Girls**.

✱ *The more of a saint a woman is . . .*

Inter-American Inter-National Inter-Racial Relations



"May there flow from the Cross which He presses to His Heart a torrent, a pacific waterfall, which will first inundate your soil, then your entire continent, then all the seas, then all the lands, the world. And, above this ocean, truly "pacific," may His right hand trace the Sign of the Cross on the forehead of all men, brothers at last." (Pope Pius XII, speaking on inter-American solidarity with direct reference to Christ of the Andes.)

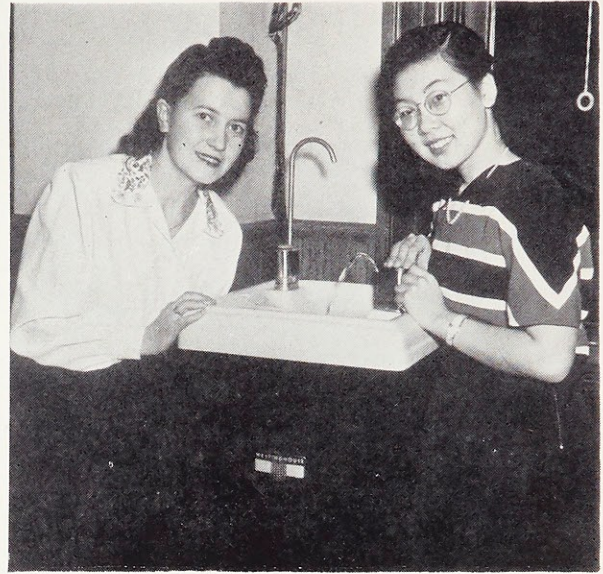
Pan-American program in original Inca costumes.



* . . . the more of a woman she is.

International Relations Studies

Today, more than ever, there is a great need for better understanding among the peoples of the world and a realization of their oneness in the Mystical Body of Christ. Here at Webster we are provided with many ways in which to bring this realization about. The International Relations Club, with its officers Mary Lee Holland, Bertha Henry and Ann Blanford, meets each Tuesday of the month to discuss the current problems, the harm they can lead to, and some possible solution in which they as Catholic college students can participate — exercising Christian charity. In the early fall the inter-collegiate panel was held at Webster. Students of every race, color, and creed from every college in the vicinity talked UNESCO and communism, expressing their opinions freely and seeking an understanding of world problems.



Kazimiera from Poland and Akiko from Japan meet and become friends at Webster.

Here on our own campus we have students from Paris, Hawaii, Puerto Rico, Japan, China, and Mexico, bringing their traditions and customs to us. What better opportunity for arriving at an understanding spirit of friendliness and oneness.



M. L. Holland, President; B. Henry, Vice-President; A. Blandford, Secretary-Treasurer; and J. Boone, guest speaker, prepare the next I. R. C. Meeting.



Joan Boone reads paper on "United States Foreign Policy in China" at the monthly I. R. C. Meeting.

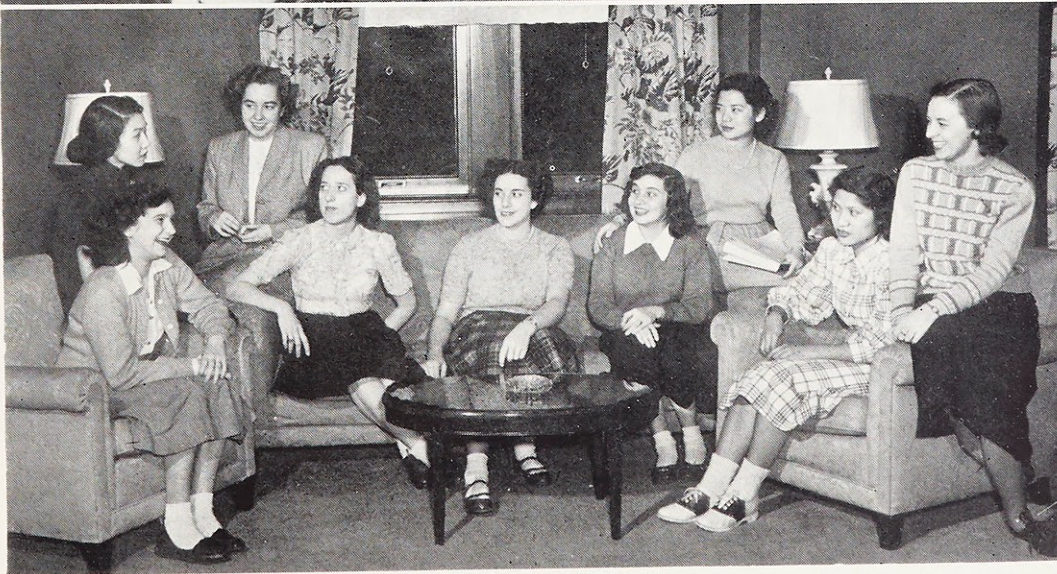
* *The more of a saint a woman is . . .*



Anne Marie Gadaud-Lasnier, exchange student from Paris, gives first-hand information on UNESCO at the inter-collegiate panel held at Webster.



Students from various colleges in the vicinity discuss Communism and its threat to world peace and unity.



Foreign students from China, Hawaii, France, Canada, Puerto Rico, and Mexico, exchange opinions on a new country and surroundings.

* . . . the more of a woman she is.



Parlez-vous française? Websterites at Quebec take time off from classes at Laval University to go up the river St. Lawrence on the Saguenay trip.

Lecture and Travel are Aids to Culture



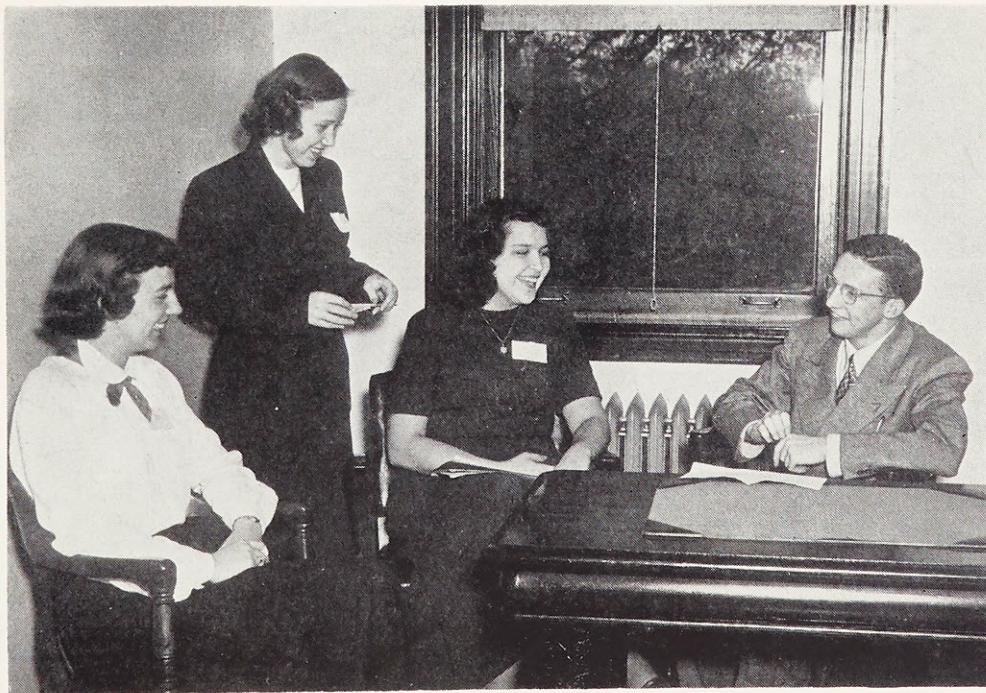
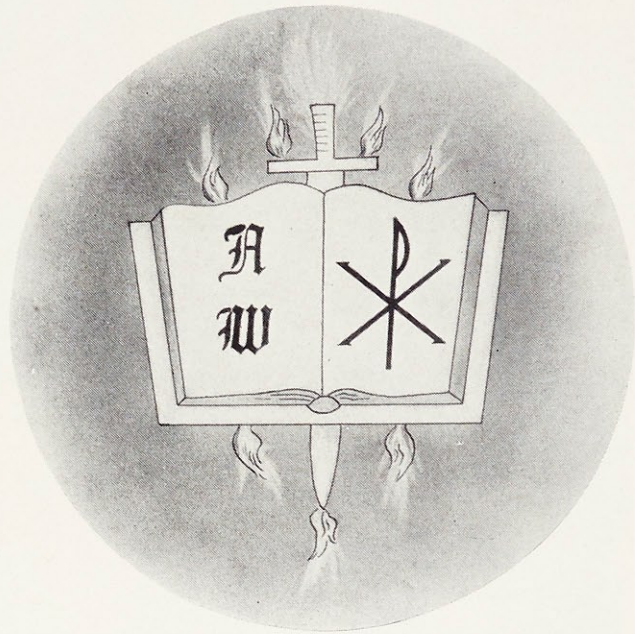
Webster students speak with Monsignor Fulton J. Sheen following his address, **The Second Spring of the Spirit**, in which he emphasized the coming rebirth of Christianity.

✱ *The more of a saint a woman is . . .*

Press

Lauretanum, Loretine, Web

The Catholic collegiate press has the obligation to fulfill the ends of the Catholic Press which has a great mission and a great destiny. It must identify itself, strongly and fearlessly, with the global mission of Christianity. It must be the voice of Catholic Action, the champion of all those who are fighting for justice, liberty, and peace. It must be **alert, competent, apostolic!**



Vincent Geise, editor of **Concord**, speaks to Publication Editors.

* . . . *the more of a woman she is.*

Journalist Stresses Christian Writing



The **Lauretanum** staff seem to enjoy their work on the yearbook! Standing: M. J. Wieck, F. Catanzaro, K. O'Malley, H. Pearson. Sitting: S. Buckler, J. Romey, editor.



Lois Schumacher, co-editor of **Today**, discusses Catholic College publications with a group of interested journalism students. Miss Schumacher pointed out that the Christian spirit should permeate student publications.



The more of a saint a woman is . . .

Loretine Inspires Creative Work



The **Loretine** Staff, go over the lay-out for the coming edition of the magazine.
Standing: H. Snook, M. Reedy, J. Brungardt, M. Carroll, J. Hoogstraet, E. Grant, M. Riffel, A. O'Bryan, L. Stuever, D. Mullally. Sitting: G. McVay, editor, V. Cooper.



J. F. Powers, author of **Prince of Darkness**, tells delegates to Catholic Press Conference held at Marquette University, "writing is something within your soul that forces itself out, often making you hate it even though you sense that it is good and are assured that it is good."

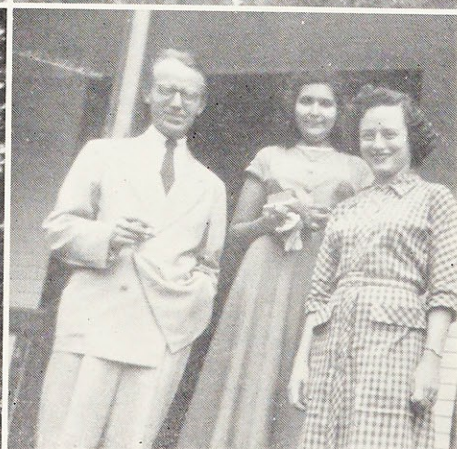
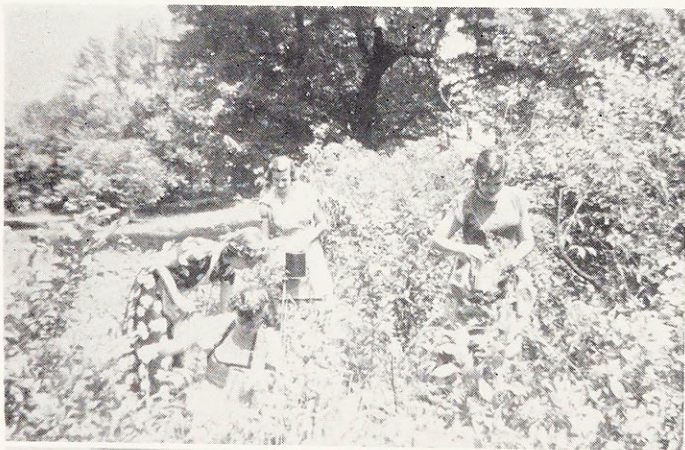
✱ . . . the more of a woman she is.

"Being and Writing" – The Web



Deadline to meet and in the **Web** office, the staff works hard on the next issue. Under the editorship of A. Donati, **The Web** tried to build up a Christian mentality through its articles.

Standing: D. Willard, M. J. Van Brunt, C. Gebhart, D. Mullally, E. Ratermann, R. Krebs, J. Hoogstraet. Sitting: P. McQuie, J. Jablonski, J. Federer, A. Donati, A. Kraft, G. McVay.

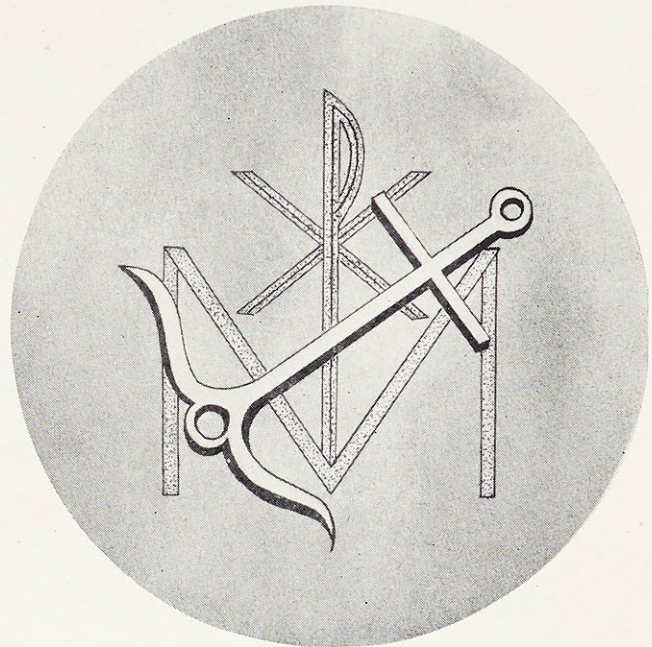


Grailville provides new experiences in integrated living for staff writers A. Donati, J. Romey, and P. McQuie. "Being and Writing" conducted by Dr. Frank O'Malley of Notre Dame University proved most beneficial to the staff editors.

✱ *The more of a saint a woman is . . .*

Joy In Living

"Let us rejoice in the Lord, Alleluia!"
The essence of Christian living is joy. And while the deepest joys are products of deep living, if one's whole being is in tune with Christian living there will be true joy in all activities of life. In college life recreation is definitely important! There are many ways of re-creating or refreshing oneself — in a Christian life — joyously!



Mrs. Kane discusses Christian recreation with Webster students.

* . . . the more of a woman she is.

"Tidings" Peak of Drama Season



* *The more of a saint a woman is . . .*

Athletics Complete A Balanced Program



* . . . the more of a woman she is.

Social Activities are Varied



* *The more of a saint a woman is . . .*

Off the Record Moments are Relaxing



* . . . the more of a woman she is.

Formal Photographs

ALTA QUAST STUDIO

Informal Photographs

SISTER M. GERMAINE, S.L.

GLENN OGLE

Printing and Engraving

MISSOURIAN PRINTING &
STATIONERY COMPANY

Artist

SISTER CHRISTINA, S.L.