

Lauretanum



1932



Presented by

Lakmé Pérez - Editor-in-chief

Virginia Hennessy - Associate editor

Jane Burke - Art editor

Jane Daly - Business manager

Elvira Kings - Advertising manager

Rose Mary Corley - Circulation manager



Engraving by
Central Engraving Co.

Printing by
Von Hoffmann Press

Photography by
Sid Whiting Studio

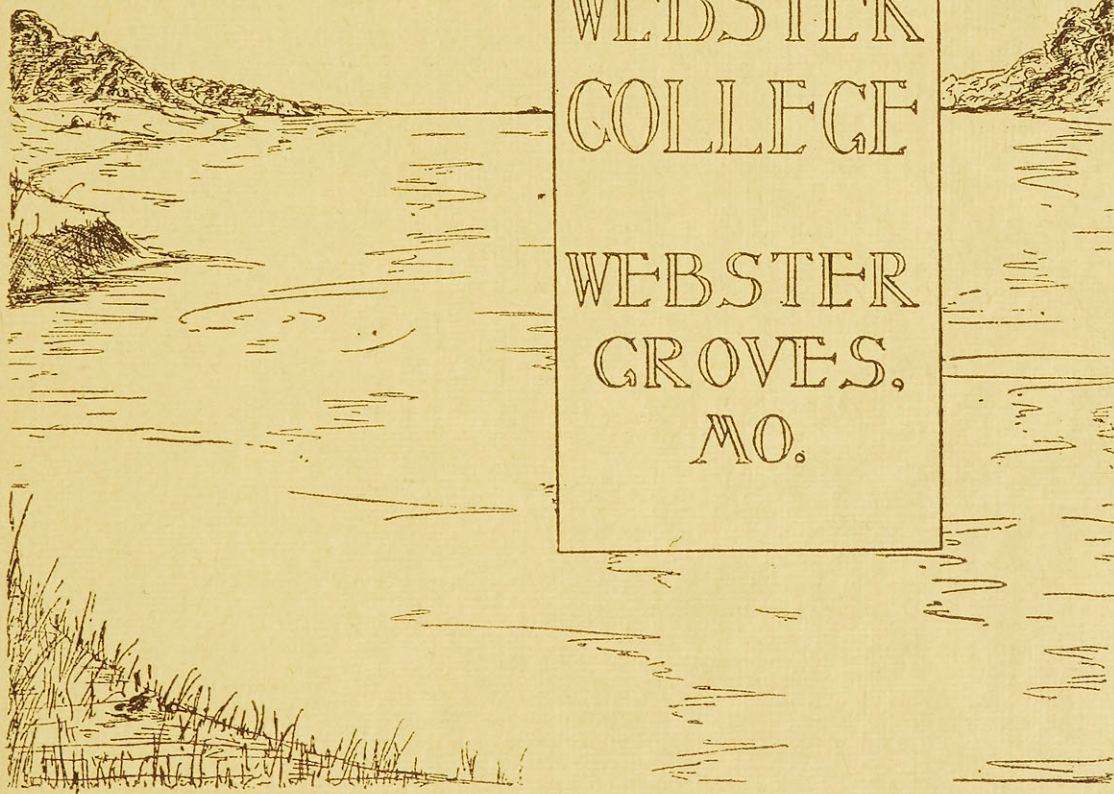
Binding by
Becktold Co.

THE
LAURETANUM

1932

WEBSTER
COLLEGE

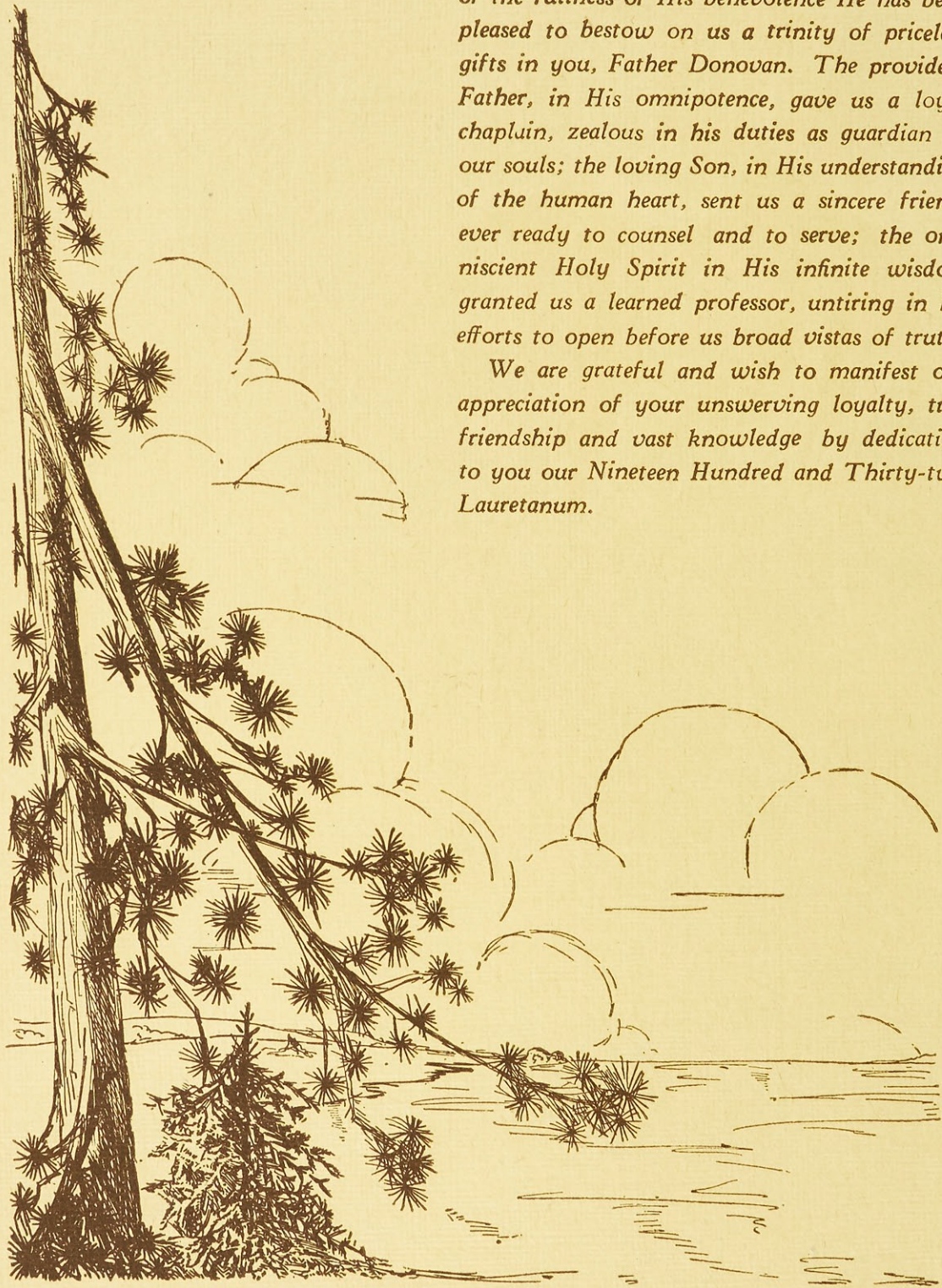
WEBSTER
GROVES,
MO.

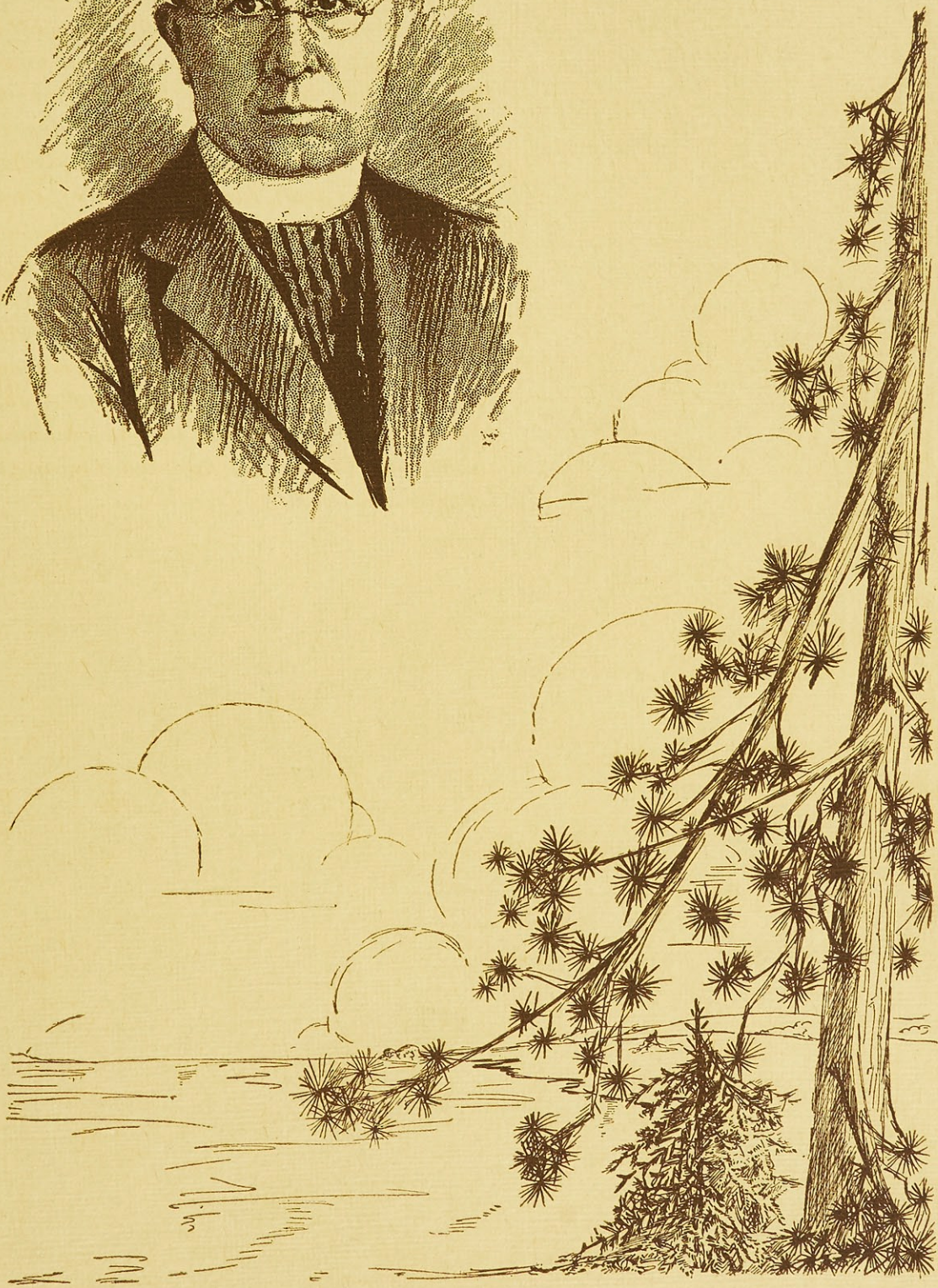
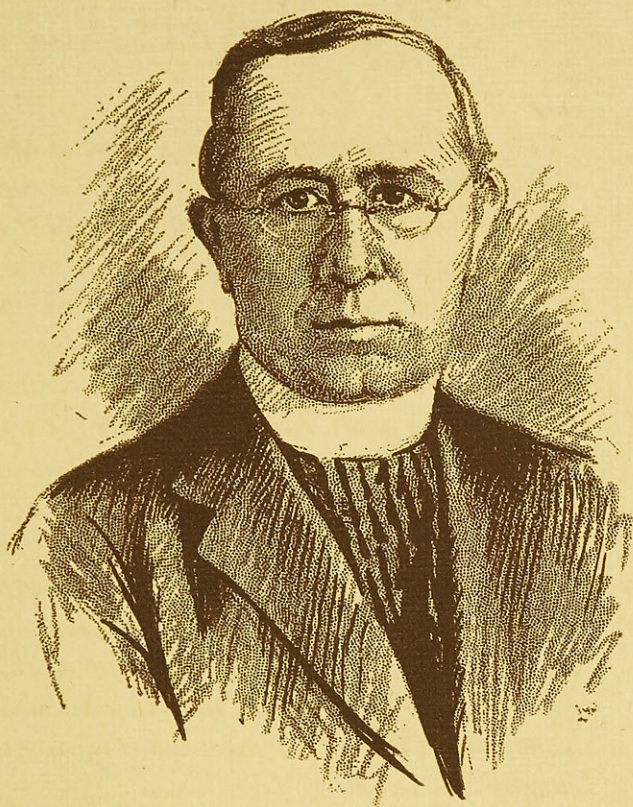


Dedication

God has been good to Webster College. Out of the fullness of His benevolence He has been pleased to bestow on us a trinity of priceless gifts in you, Father Donovan. The provident Father, in His omnipotence, gave us a loyal chaplain, zealous in his duties as guardian of our souls; the loving Son, in His understanding of the human heart, sent us a sincere friend, ever ready to counsel and to serve; the omniscient Holy Spirit in His infinite wisdom granted us a learned professor, untiring in his efforts to open before us broad vistas of truth.

We are grateful and wish to manifest our appreciation of your unswerving loyalty, true friendship and vast knowledge by dedicating to you our Nineteen Hundred and Thirty-two Lauretanum.





Foreword

The soul of universal man craves eternally that spiritual something which thrills his sense of the esthetic, transforms banality into a maze of loveliness, and weaves around him the magic of its beauty. Romance! Illusive, mystic, precious thing! We have found it in a river—in its tiny, trickling beginning in the northern woods, in its mighty course through the heart of the country, in the enchantment of its southern shores. Although the greater number of Webster College girls dwell in the valley of the Mississippi, few are sensitive to the charm of this Father of Waters. To some it is a muddy stream, to others but an artery of commerce and industry. It is our hope that the following pages may awaken a consciousness of the Romance of the Mississippi River.



Contents

COLLEGE

Administration
Views

CLASSES

Seniors	Sophomores
Juniors	Freshmen

ACTIVITIES

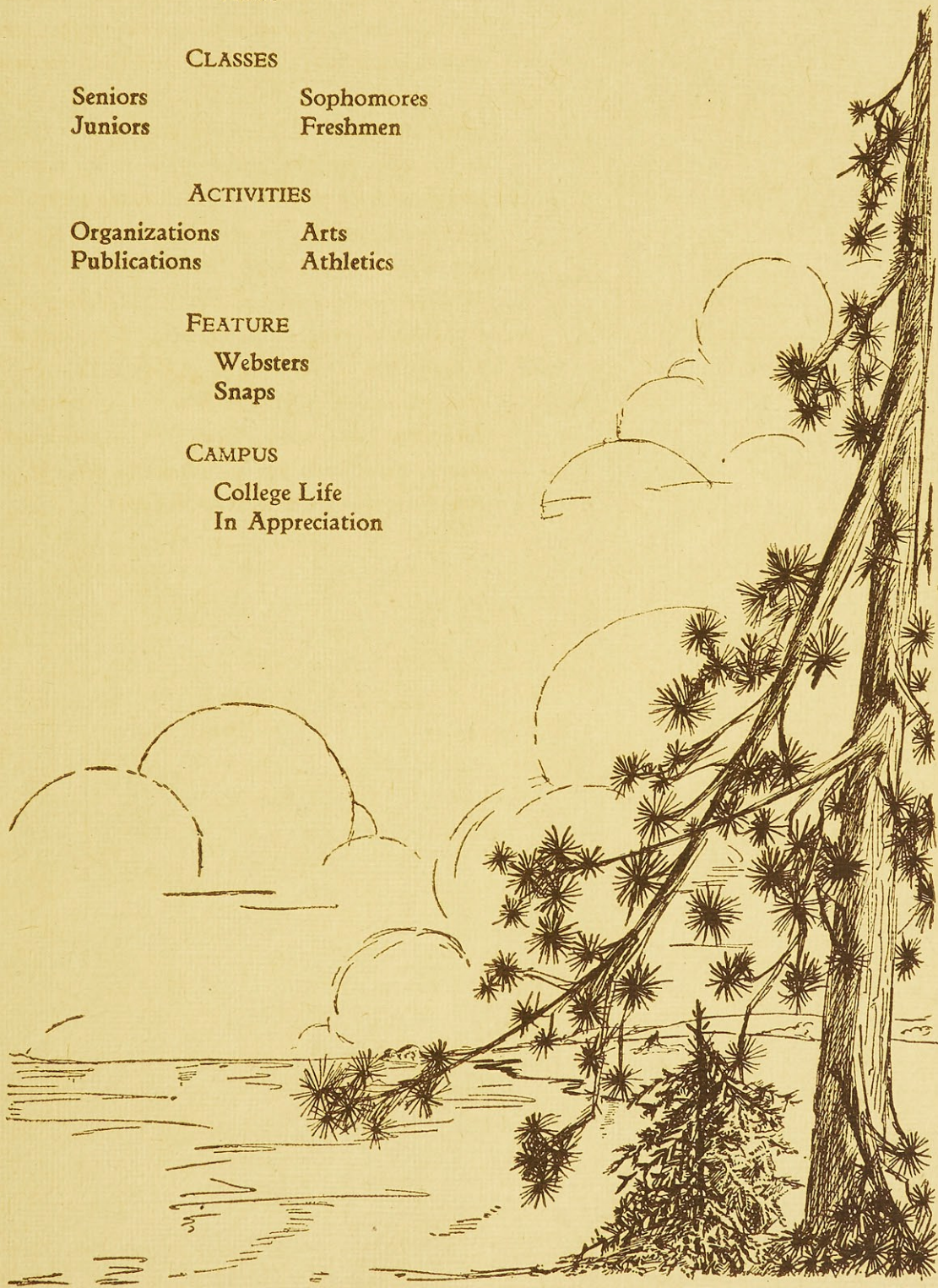
Organizations	Arts
Publications	Athletics

FEATURE

Websters
Snaps

CAMPUS

College Life
In Appreciation



Lake Itasca

A first time is always memorable just as a beginning is a thrilling thing. Perhaps the charm is the lure of uncertainty in the will o' the wisp tomorrow; perhaps it is joy in the delightful freshness and promise of something new; nevertheless it is romantic. Especially so is the beginning of the mighty Mississippi River—a narrow brook flowing from the north arm of Lake Itasca in northern Montana. This small, quiet lake, nestling 'neath whispering pines, derives its name from a fanciful combination of the two Latin words "veritas caput". From its calm, trickle the first tiny drops of water that later swell into a wide, rushing torrent thundering through the length of the land and hurling its massive strength into the boundless sea.

College



Administration



Officers of Administration

GEORGE FRANCIS DONOVAN, A. M., Ph. D.
President

SISTER LILLIAN CLARE
Registrar

SISTER M. BORGIA, A. M.
Dean

SISTER MARY AMBROSE
Treasurer

SISTER FRANCES MARIE, A. M.
Dean of Women

SISTER MARY JOSEPH, Ph. D.
Librarian



Faculty

SISTER MARY ADELINE, Mus. M.
Professor of Theory of Music and Director of the Conservatory

SISTER MARY ALONZA, B. S.
Professor of Chemistry

SISTER MARY ALOYSE, A. M.
Professor of Biology and Director of the Department

SISTER ALOYSIA MARIE, A. M.
Professor of English and Director of the Department

SISTER ALPHONSINE, Mus. B.
Instructor in Organ

SISTER MARY BORGIA, A. M.
Professor of Mathematics and Director of the Department

SISTER MARIE CLYDE, A. B.
Instructor in English

SISTER DOROTHY MARIE, Litt. B.
Instructor in Art

SISTER MARY FELICITAS, A. M.
Instructor in Spanish

SISTER MARY FLAGET, A. B.
Instructor in Education

SISTER FRANCES MARIE, A. M.
Professor of Education

SISTER MARY JUSTINE, Mus. B.
Instructor in Piano

SISTER MARY KATHLEEN, Mus. B.
Instructor in Violin

SISTER MARY LOUISE, A. B.
Teaching Fellow in English, St. Louis University

SISTER MIRIAM, Ph. D.
Professor of Classical Languages and Director of the Department

SISTER MARY NERINCKX, A. M.
Assistant Professor in Latin

SISTER MARY PAULA, Mus. B.
Instructor in Voice



GEORGE FRANCIS DONOVAN, Ph. D.
President



Message to the Seniors

The spirit that has produced the Lauretanium is the spirit of Webster College typified in all her activities, from its earliest beginnings down to the present year. It embraces the devotion and initiative of the student body, the generosity and good will of the alumnae, the co-operation and criticism of friends, and the sacrifices and good work of the faculty.

Webster College stands on the threshold of a new era marked by significant changes in administration and policy. Despite the tremendous chaos in the world of education today, Webster still courageously and challengingly upholds the traditional principles of college training.

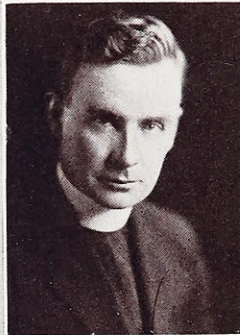
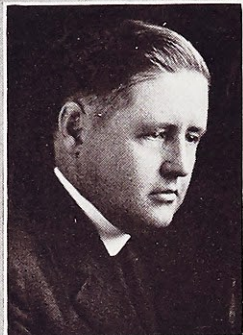
To those who are leaving Webster this year, I extend the invitation to visit with us again the halls and classrooms of your beloved alma mater that you may cherish once more the majestic environment of her culture and renew the priceless friendship of her heritage.

May the simplicity of your college education be moulded into your every act and thought. May the principles of your Catholic faith be a guide to your individual development and to your relations with other members of society. May all your efforts be directed to the growth of better American citizenship, better college educated women, and better Catholic womanhood.

GEORGE F. DONOVAN, *President.*

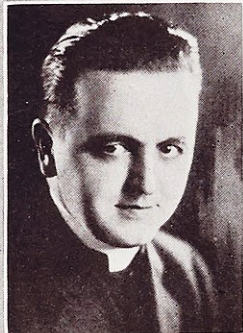


Faculty



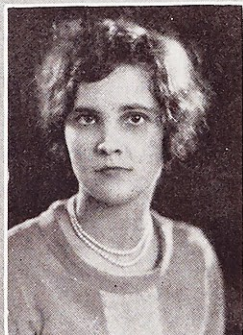
REV. T. F. SCHMUCKER, C. M., S. T. D.
 A. B. DePaul University, 1925.
 S. T. D. Collegio Angelico, Rome, 1928.
Professor of Scripture.

REV. J. P. O'MALLEY, C. M., A. M.
Professor of Religion.
Director of the Department.



REV. M. J. O'CONNELL, C. M., S. T. D.
 A. B. St. Mary's College, Perryville, 1922.
 S. T. D. Collegio Angelico, Rome, 1925.
Professor of History.

REV. L. J. FALLON, C. M., S. T. D.
 A. B. DePaul University, 1926.
 S. T. D. Collegio Angelico, Rome, 1929.
Professor of Philosophy.



MISS GENEVIEVE BARTHEL, A. B.
 A. B. Webster College, 1926.
Instructor of Physical Education.

MRS. ANNA McCLAIN SANKEY, A. B.
 A. B. Forest Park College, 1903.
 Teacher's Diploma, Morse School of Ex-
 pression, 1915.
Instructor in Dramatic Art.



MISS MARY ELIZABETH NEWELL, A. M.
 A. B. Webster College, 1925.
 A. M. St. Louis University, 1931.
Instructor in Mathematics.

MISS JOSEPHINE RABBITT, A. B.
 A. B. Webster College, 1930
 Teaching Fellow in Biology, St. Louis
 University.

Faculty



REV. J. P. DONOVAN, C. M., J. C. D.
 A. B. DePaul University, 1902.
 S. T. D. Collegio Angelico, Rome, 1909.
Professor of Social Science.

REV. M. A. FELTZ, C. M., Ph. D.
 A. B. St. Mary's College, Perryville, 1929.
 Ph. D. Collegio Angelico, Rome, 1931.
Professor of Religion.

REV. L. P. FOLEY, C. M., S. T. D.
 A. B. St. Mary's College, Perryville, 1912.
 S. T. D. Collegio Angelico, Rome, 1922.
Director of Philosophy Department.

MISS BLANCHE MARSHALL, B. S.
 B. S. Webster College, 1929.
Laboratory Assistant in Chemistry.

MR. L. E. JAMES, A. M.
 A. B. Indiana University, 1923.
 A. M. Indiana University, 1924.
Instructor in Physics.

MISS MARY ALICE WHITE,
 Diplome de l'Institut de Phonetique, La
 Sorbonne, 1928.
 Certificat de Professeur de Francais a
 l'Etranger, 1931.
Instructor in French.

DR. K. B. COLDWATER, A. M., Ph. D.
 A. B. Southwestern College, 1926.
 A. M. University of Missouri, 1928.
 Ph. D. University of Missouri, 1931.
Instructor in Biology.

DR. F. W. LAIRD, Ph. D.
 A. B. University of British Columbia.
 B. Ch. University of British Columbia,
 1923.
 M. S. University of Washington, 1924.
 Ph. D. University of Wisconsin, 1928.
Director of Chemistry Department.





REV. M. S. RYAN, C. M., D. D., Ph. D.



In Memoriam

On the morning of August tenth, when Death called Fr. Michael S. Ryan, C. M., Webster College lost one of the best of her friends.

From the very beginning, Dr. Ryan was outstanding in his loyalty toward our college. Though not a member of the Webster faculty himself, Father Ryan always seemed just a part of Webster College. He was President of Kenrick Seminary when the college opened her doors in 1916, and he held this office until 1926, when he retired because of ill health. In the early days his aid in providing professors for the staff was asked and was given most generously. He never thought of failure; his encouragement was needed, and it will never be forgotten. Because of his broad vision, and his sincere interest in every plan, his advice was often sought. Fearless, honest, and constructive, he filled a unique place on the Advisory Board, and always evinced unfailing interest in every college problem.

He was our friend in the truest sense of the word, and was dearly loved by faculty and students alike. The alumnae and upper classmen will long remember his enjoyment of the Christmas party—which he never missed—and of other functions which brought faculty and student body together. He knew the girls and shared their interests.

As a tribute to the memory of him to whom so much is due, a scholarship, in perpetuity, has been established. This scholarship is a testimonial of the sincere affection of the school to which Father Ryan has so endeared himself, and its recipient is to be chosen by the Vincentian Fathers.

We are sad when we remember that Father Ryan is with us no longer, but we have happy memories of him, and he shares, and will continue to share, our prayers.



Loretto Hall

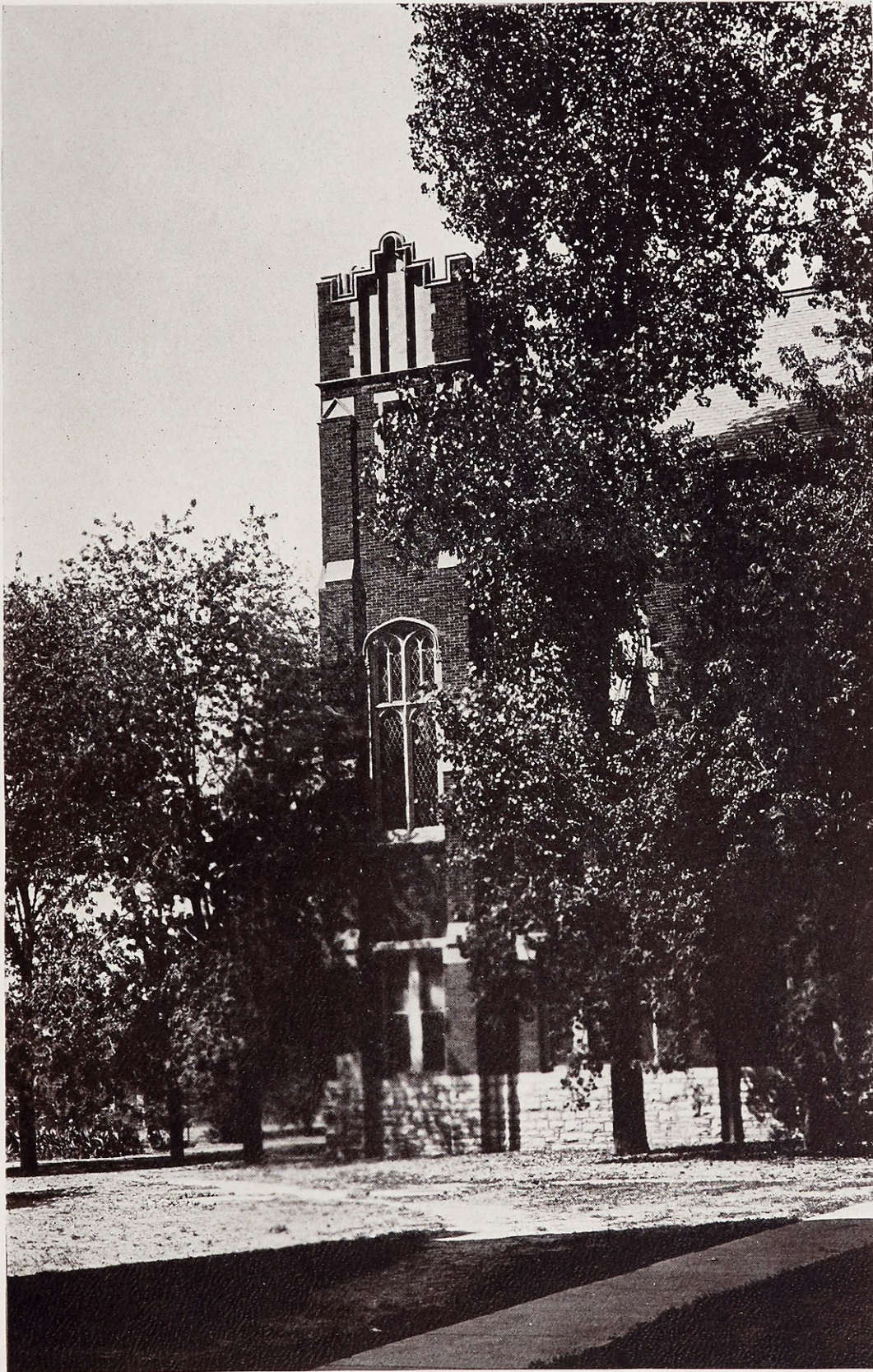


Administration Building



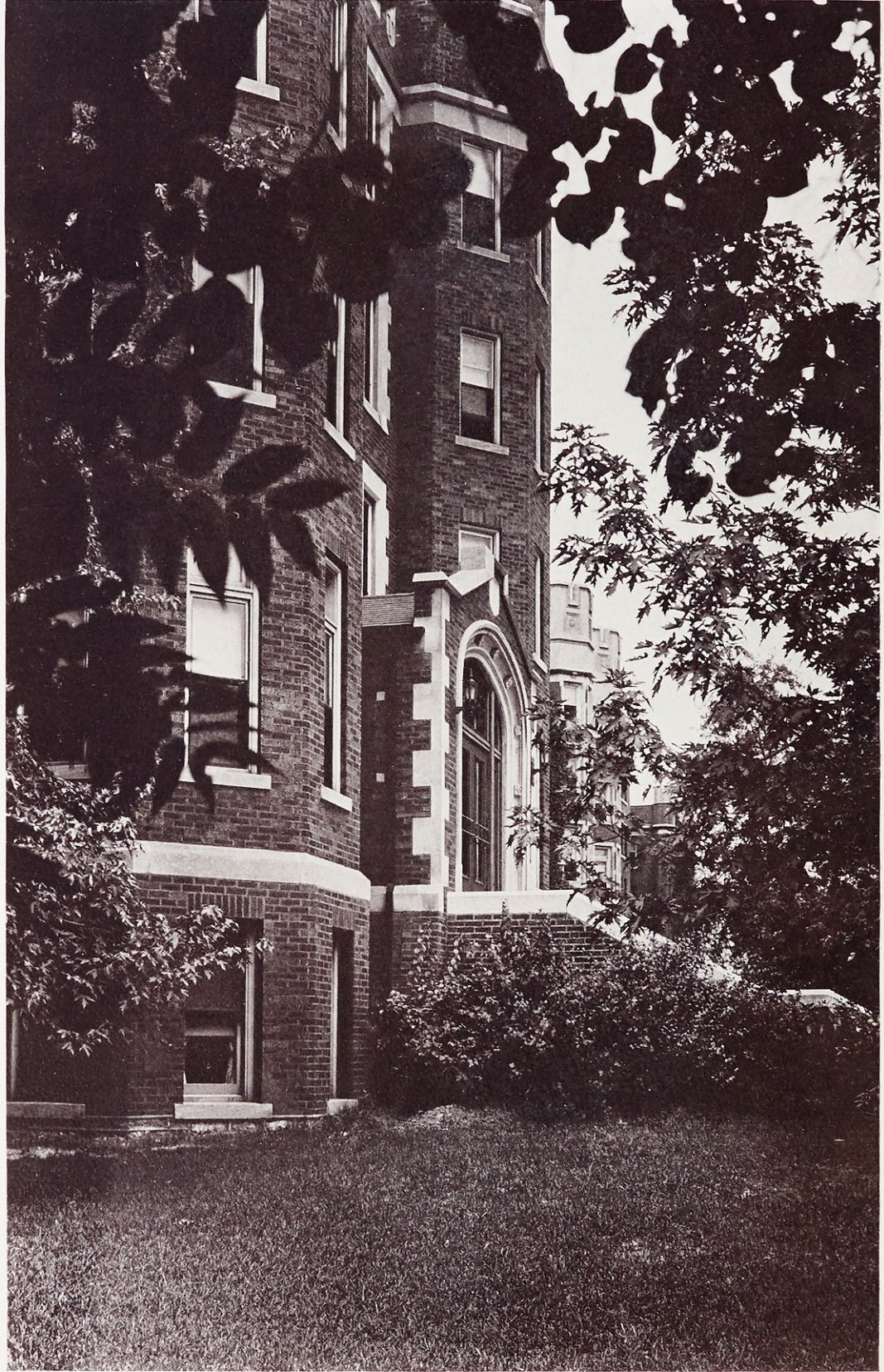


Auditorium



Chapel of All Saints





Student's Residence Hall

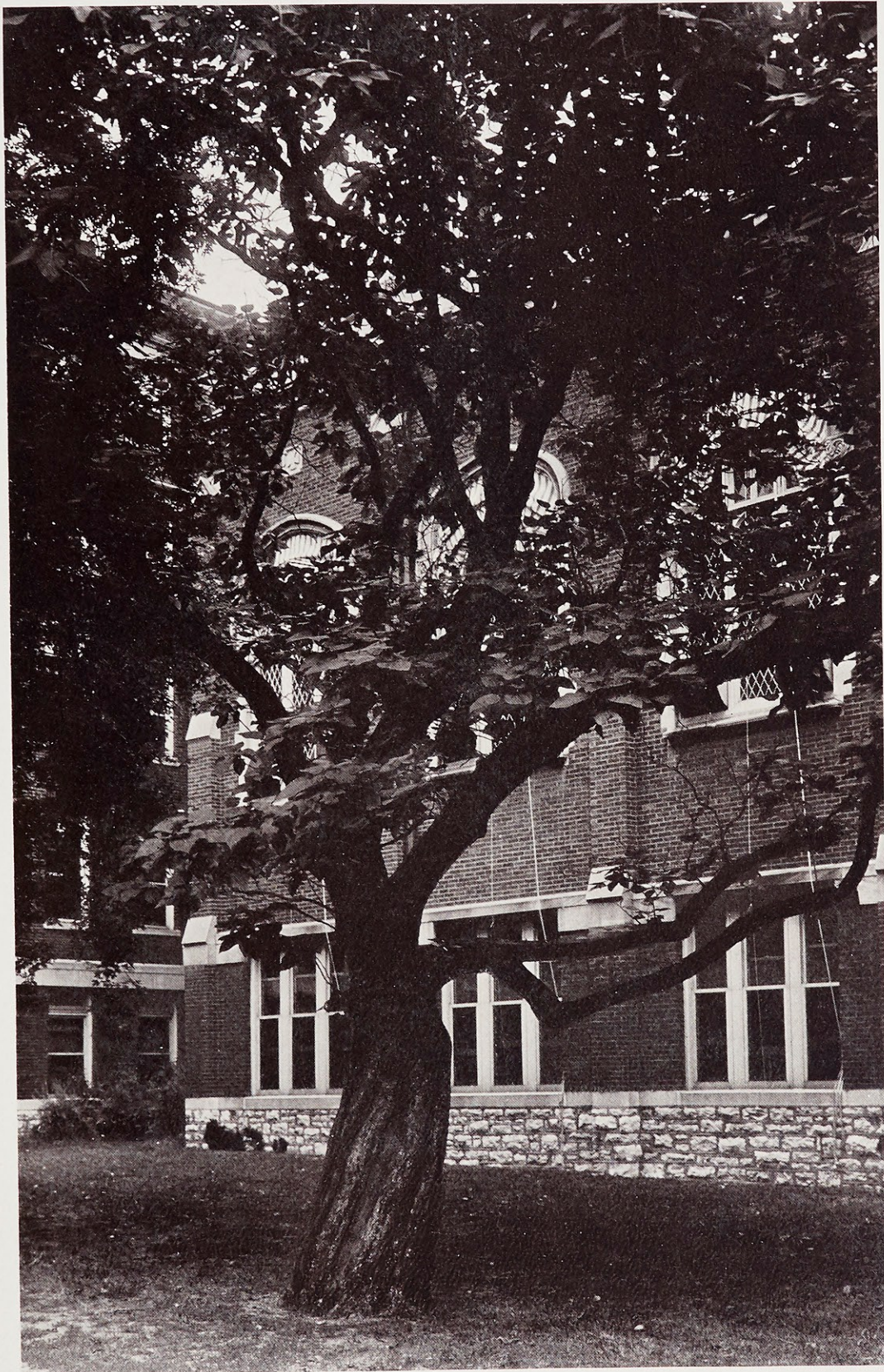


Conservatory of Music





The Front Drive



The Catalpa Tree



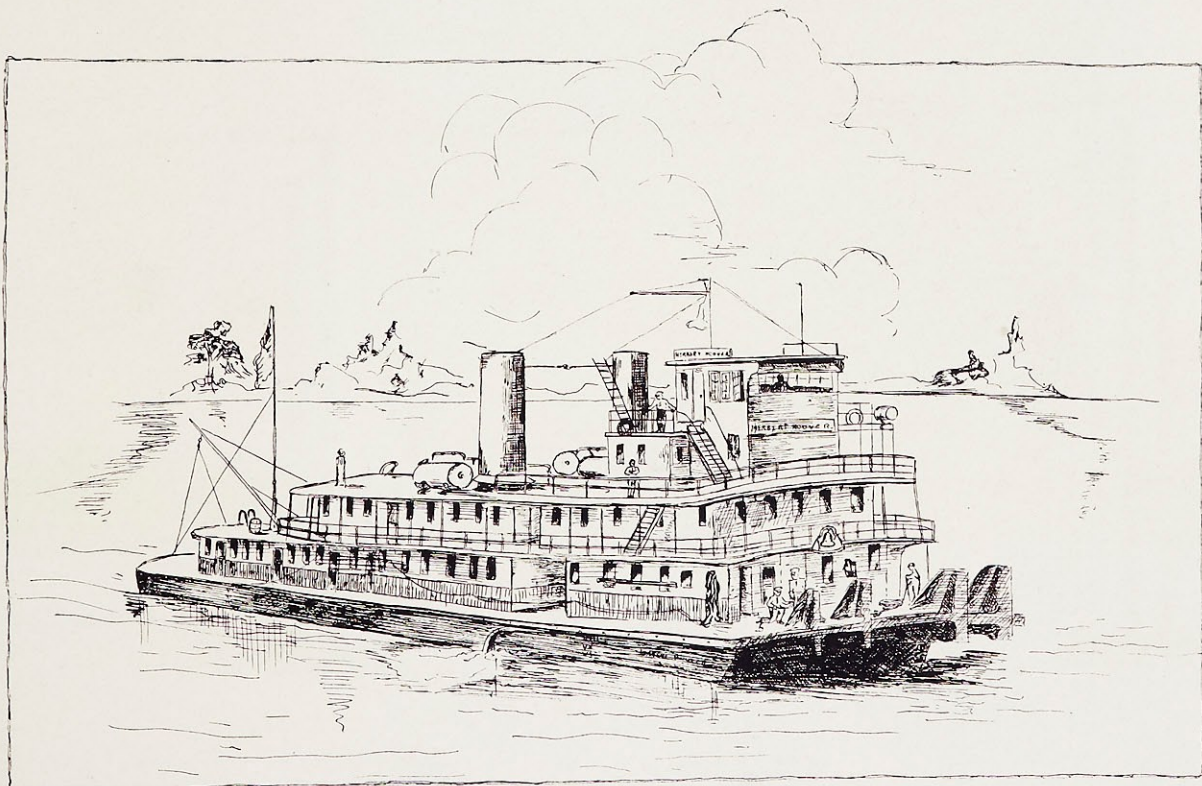
Saint Louis

The magnificent bridge across the Mississippi at Saint Louis is a veritable landmark in the engineering progress of the age in which we live. It not only exemplifies mechanical and engineering skill, but it is an imperishable proof of the audacity of a man whose splendid genius conceived and whose enterprising liberality consummated it. What a thrill must have surged through the soul of James Eads as he stood on the levee along the front of the city and saw this child of his marvelous brain develop into a mighty giant of steel spanning the Great River! Hundreds of passengers hurried past him to and from the numberless steamers which lined the wharves. They were only mildly observant of that man through whom steel had once more overcome the force of nature.

Classes



Seniors



A. B. in Mathematics and Education

Student Council '32

Class Officer, V.-Pres. '29, Pres. '32

Lauretanum Staff '31

Mathematics Club '30, '31, '32

Classical Club '30, '31

Maid, St. Louis U. Prom, '32



Grace Strecker

St. Louis, Mo.

A. B. in Latin and English

Class Officer '31, '32

Chemistry Club '30

St. Louis U. Classical Club '32

Classical Club '30, '31, V.-Pres. '32

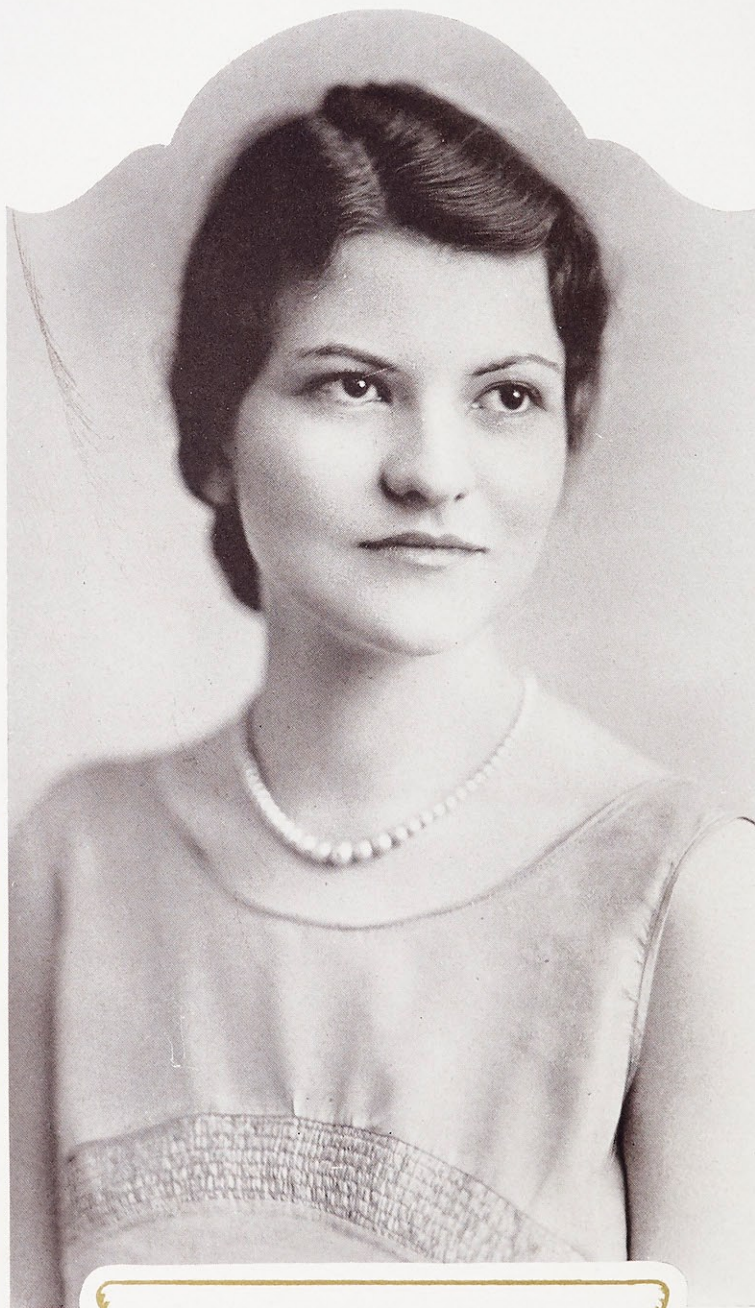
Study Club '32



St. Louis, Mo.

Ruth McKenna





A. B. in Latin and English

Student Assn. Treas. '31, Pres. '32

Class Officer, Treas. '29, '30, Pres. '31

May Queen '31

Spiritual Council '32

Dramatic Club '29

Choral Club '29, '30, '31, '32

Biology Club '30

Study Club '31, '32

Classical Club '30, '31, '32

St. Louis U. Classical Club '30, '31, '32

Student Council '31, '32

East St. Louis, Ill.

Dorothea Shuford

B. S. in Chemistry and Mathematics

Washington University '28, '29

W. A. A. V.-Pres. '31, Pres. '32

Student Council '31, Secy. '32

Class Officer, Secy. '31

Web Staff '30, '31

Chemistry Club '30, Pres. '31, Secy. '32

Biology Club '30

Poetry Club '31, '32

Mathematics Club '30, '31, '32

Study Club '32

Varsity Basketball '30, Capt. '31, '32

Track, 1st Place, '30, '31

Athletic Awards, 1st, 2nd, 3rd



St. Louis, Mo.

Kathryn Bussmann

A. B. in English and Mathematics

Class Officer, V.-Pres. '30

Spiritual Council '32

Loretto Players '30, '31

Mathematics Club '30, '31, Pres. '32

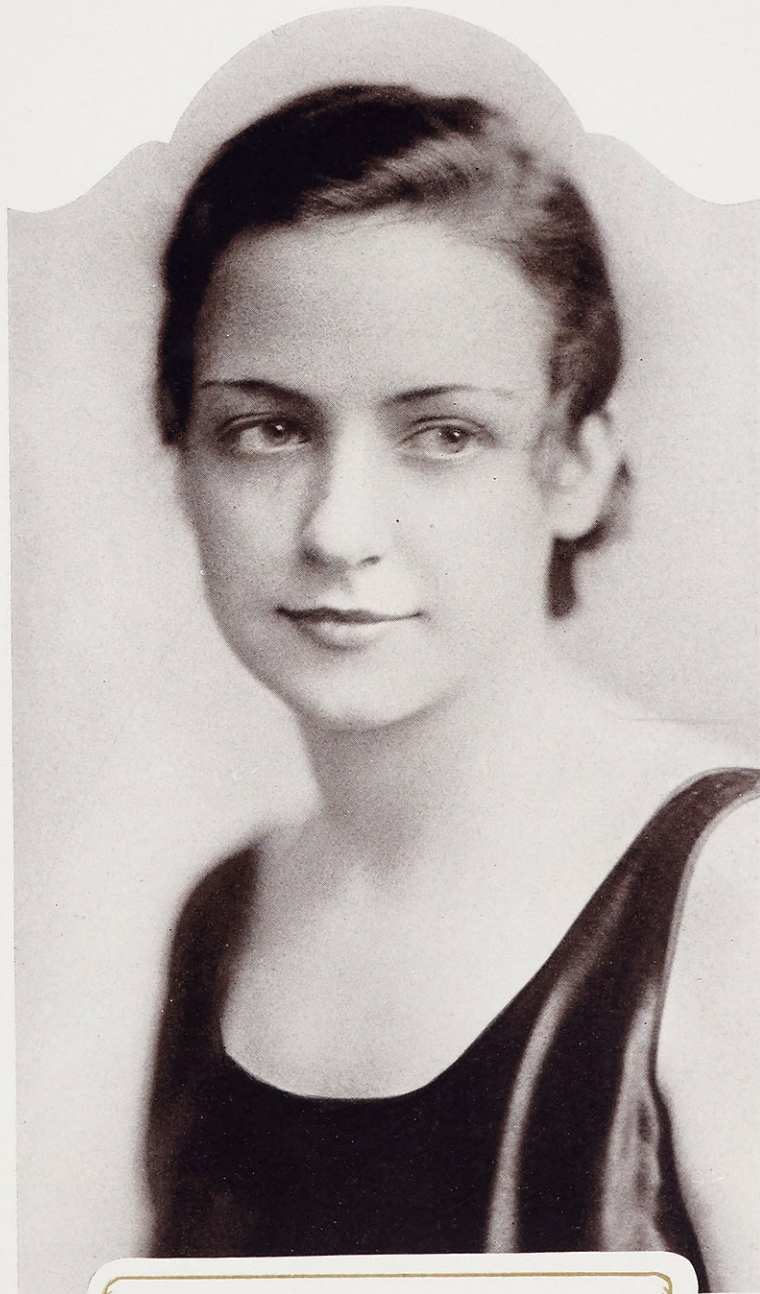
Study Club '32



May Hillemeyer

Webster Groves, Mo.

A. B. in History and Education
Class Officer, V.-Pres. '31, Secy. '32
Lauretanum Staff '31
Loretine Staff '32
Loretto Players '30
Classical Club '32



St. Louis, Mo.

Mary Brown



A. B. in German and French
Poetry Club '31, '32
Classical Club '30, '31, '32
Pleiade '32
Biology Club '30
Varsity Basketball '31, '32
Athletic Award, 1st, 2nd

Margaret Wilde

Kansas City, Mo.

A. B. in English and Spanish

Loretine Staff '32

Web Staff '31

Poetry Club '31, '32

Choral Club '29, '30, '31, '32



St. Louis, Mo.

Helen Graves





A. B. in Latin and English

Sodality Prefect '32

Student Council '32

Spiritual Council '31, '32

*Nat'l Advisory Board of College
Sodalities '32*

Web Staff '32

St. Louis U. Classical Club '30, '31, '32

Dramatic Club '29

Study Club '31, '32

Biology Club '30

Classical Club '30, '31, '32

Choral Club '29

Athletic Award, 1st

Virginia Drummond

East St. Louis, Ill.



A. B. in English and Greek

C. S. M. C. Pres. '31, Secy. '32

Delegate to C. S. M. C. Convention '31

Spiritual Council '30, '31

Web Staff, Editor, '32

Biology Club '30

Classical Club '30, '31, '32

Study Club '32



Webster Groves, Mo.

Mary Virginia Cummins

Ph. B. in English and Spanish
Biology Club '30



Marion Garthoffner

St. Louis, Mo.

A. B.
Biolog.
Poetry
Classic



A. B. in English and Greek

Biology Club '30

Poetry Club '32

Classical Club '31, '32



Paris, Ark.

Florine Blevins



Page Thirty-seven

A. B. in English and Spanish
Biology Club '30
Classical Club '31, '32



Ann Ryan

St. Louis, Mo.

A. B.
Maid
Lorett
Lorett
Chemi
Choral
Classi
Study
Spiritu
Cheer

A. B. in Spanish and English

Maid St. Louis U. Prom '31

Loretine Staff '32

Loretto Players '30, '31

Chemistry Club '30

Choral Club '30

Classical Club '30

Study Club '32

Spiritual Council '32

Cheer Leader '30, '32



St. Louis, Mo.

Marie Wibracht



Josephine Reddin

Denver, Colo.

A. B. in Chemistry and Mathematics
Class Officer, V.-Pres. '32
Lauretanum Staff '31
Loretine Staff '31, '32
Web Staff '31
Loretto Players '29, '30, '31, Pres. '32
W. A. A. Pres. '31
Chemistry Club '29, Secy. '30, '31
Mathematics Club '30, V.-Pres. '31
Classical Club '31
Varsity Basketball '29, Capt. '30, '31, '32
Athletic Awards, 1st, 2nd, 3rd
Vodvil Chairman '32

Litt. B. in English and Spanish

Lauretanum Staff '31

Loretine Staff '31, '32

Web Staff '32

Choral Club '29

Poetry Club '31, Pres. '32

Varsity Basketball '29, '30, '31, '32

Athletic Awards 1st, 2nd, 3rd

Press Club Pres. '32



Las Cruces, New Mexico

Genevieve McBride

Ph. B. in French and English
College of St. Genevieve-of-the-Pines
Asheville, N. C., '29, '30
Pleiade '32
Choral Club '31, '32



Loretto Day

Hamburg, Ill.

Ph. B. in English and French

Choral Club '30, Pres. '31, '32

Pleiade '32

Biology Club '30



Hamburg, Ill.

Mary Eleanor Day

A. B. in English and Greek
Ivy Poet '32
Poetry Club '30, '31, '32
Classical Club '30, '31, '32
Biology Club '30
Choral Club '29, '30, '31, V.-Pres. '32



Frances Weber

St. Louis, Mo.

A. B. in Latin and English

Loretine Staff '32

Classical Club '30, '31, Pres. '32

*St. Louis U. Classical Club '30, '31,
Treas. '32*

Study Club '31, '32

Chemistry Club '30

Dramatic Club '29

Athletic Award, 1st



East St. Louis, Ill.

Marie Walsh

B. S. in Chemistry and Mathematics
Student Council '31, '32
Chemistry Club '30, V.-Pres. '31, '32
Mathematics Club '30, '31, '32
Athletic Award, 1st



Mary Eleanora McGinty

St. Louis, Mo.

A. B. in English and French

Loretine Staff, Editor, '32

Choral Club '29, '30

Classical Club '30, '31, '32

Biology Club '30

Poetry Club '31, '32

Pleiade '32

Varsity Basketball '32



St. Louis, Mo.

Rosemary Gottlob

A. B. in Mathematics and Education
Web Staff '32
Classical Club '30
Mathematics Club '30, '31, '32
Athletic Award, 1st



Inga Block

Maplewood, Mo.

A. B. in Latin and English

Maid, May Day, '30, '31

Choral Club '30

Classical Club '30, '31, Secy.-Treas. '32



St. Louis, Mo.

Ellen Prendergast

A. B. in History and Education

Dramatic Club '29

Classical Club '31, '32

Chemistry Club '31

Study Club '32

Athletic Award, 1st



Mary Zilliken

Chester, Ill.

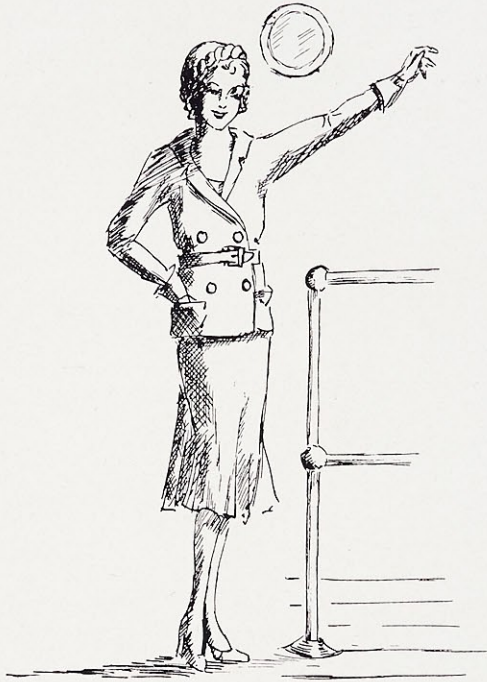
Sister Mary Concepta McCabe

A. B. in English and Latin

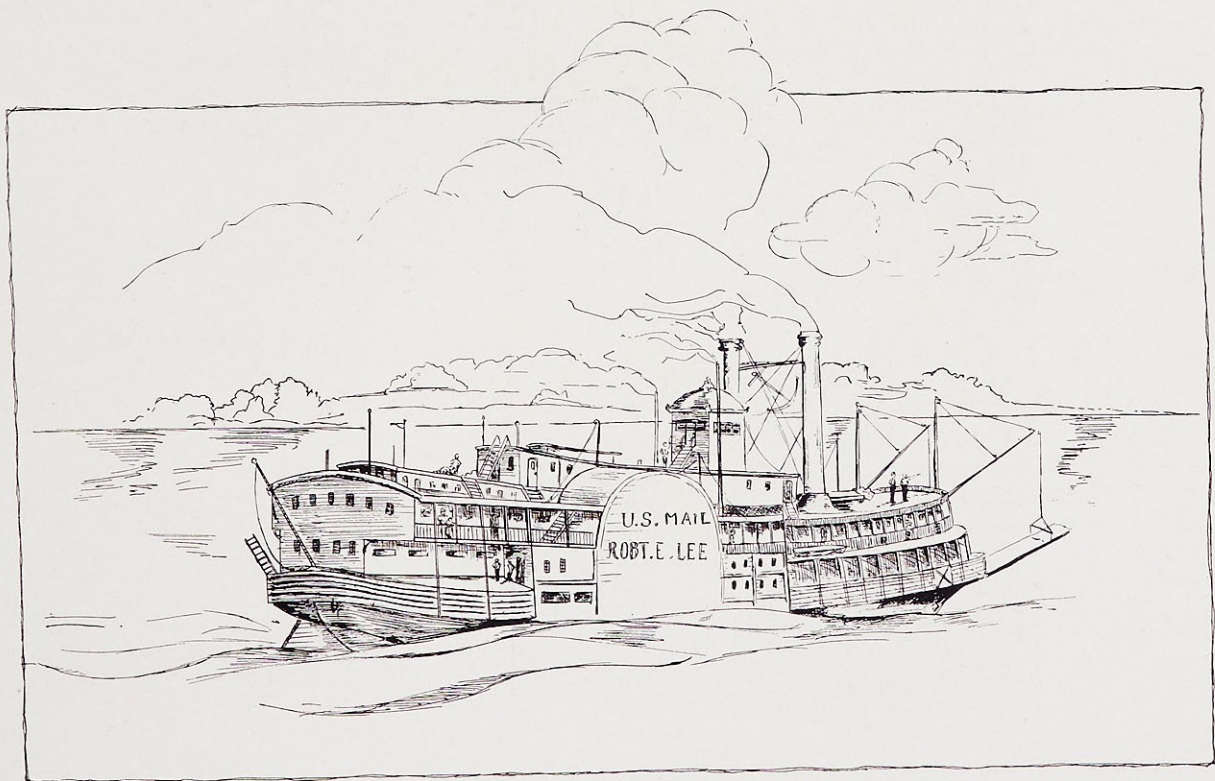
Sister Philippa Manning

A. B. in Latin and French

Sisters of Mercy, Webster Groves, Mo



Juniors





Class of



JUSTINA HAYES, *Pres.*
Edina, Mo.



HELEN LEUER, *V.-Pres.*
Highland Park, Ill.



MARY DOOLING, *Treas.*
Webster Groves, Mo.



ELIZABETH ALLISON, *Secy.*
St. Louis, Mo.



LORETTO MCCARTHY,
Taos, New Mexico.



GLADYS OLTMAN,
St. Louis, Mo.



MARY CASEY,
Webster Groves, Mo.



ALYCE CAVANAUGH,
Clare, Iowa.



LAKME PEREZ,
Kirkwood, Mo.

1933



LAURA LEE BALL,
Webster Groves, Mo.

MARGARET HOUSE,
Elizabethtown, Ky.

VIRGINIA MOORE,
Cleveland, O.

VIRGINIA HENNESSY,
University City, Mo.

LILLIAN CASEY,
St. Louis, Mo.

CLARA ROCHOW,
St. Louis, Mo.

HORTENSE HOGAN,
St. Louis, Mo.

MILDRED BONGNER,
St. Louis, Mo.

MARION HANGGE,
St. Louis, Mo.



Class of



MARGARET McCABE,
Chicago, Ill.



ELVIRA KRINGS,
St. Louis, Mo.



JANE DALY,
Kirkwood, Mo.



LEONA SIMMA,
Maplewood, Mo.



ERMA SCHLEICHER,
St. Louis, Mo.



ROSE MARY CORLEY,
St. Louis, Mo.



ANNE JANES,
Louisville, Ky.



MARGARET DELMORE,
East St. Louis, Ill.



MELINDA SCHWARTZ,
Webster Groves, Mo.



JANE BURKE,
Webster Groves, Mo.

1933



MARY BURTSCHI,
Vandalia, Ill.

AUDREY KLORER,
St. Louis, Mo.

MARGARET FLYNN,
East St. Louis, Ill.

JOSEPHINE REIS,
Belleville, Ill.

DOROTHY KRAFT,
New Albany, Ind.

FLORENCE BROEKER,
St. Louis, Mo.

MARIE STABLER,
Birmingham, Ala.

MARIE SCHMUCKER,
Dallas, Tex.

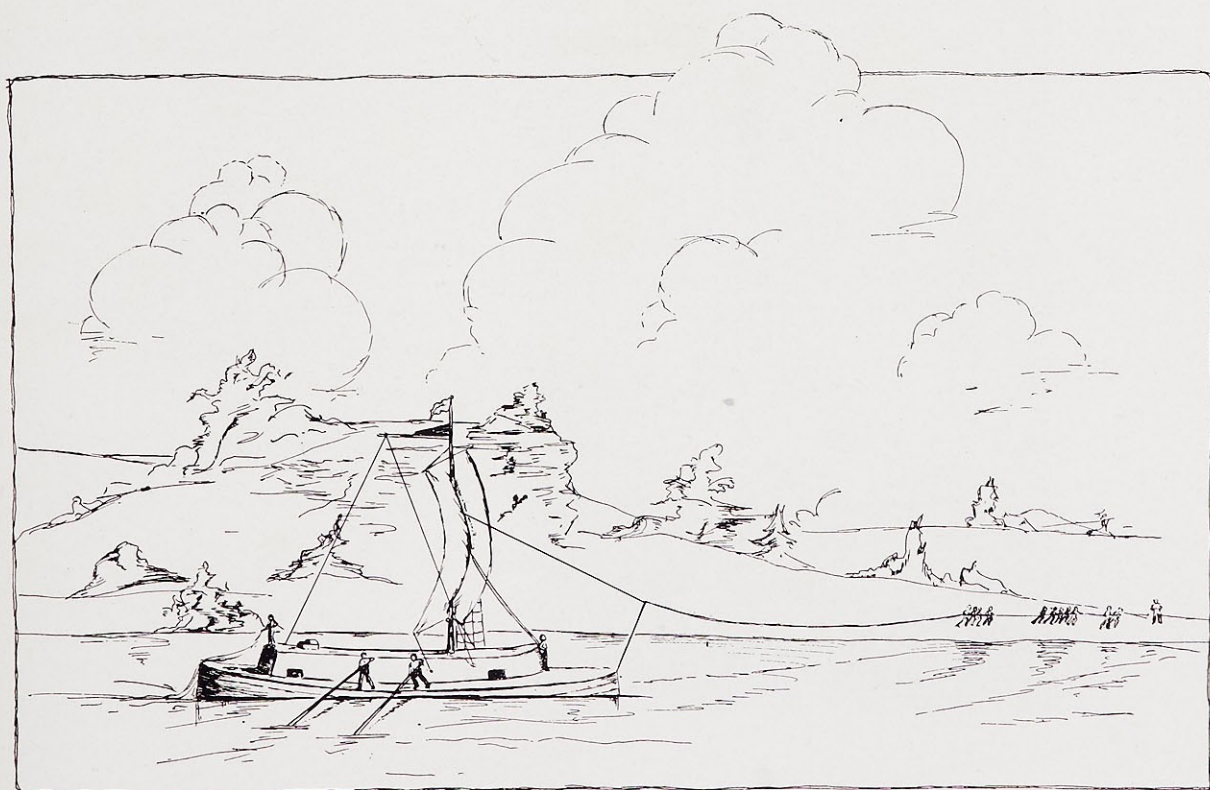
VIRGINIA CAFFERY,
Webster Groves, Mo.

LUCILLE JOHNSON,
Cuba, Mo.





Sophomores





Class of



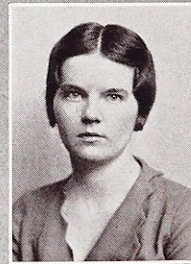
ELEANOR CARROLL, *Pres.*
Webster Groves, Mo.

DOROTHY ROYAL, *V.-Pres.*
University City, Mo.



ELIZABETH BURTLE, *Secy.*
Glenarm, Ill.

MARY ELIZABETH AUGUSTUS, *Treas.*
Louisville, Ky.



MARY AGNES REILLEY,
St. Louis, Mo.

MILDRED SMITH,
Stark, Kan.



MARGARET SULLIVAN,
St. Louis, Mo.

EVELYN ROGLES,
St. Louis, Mo.



MARGARET KINBERGER,
Louisville, Ky.

1934



LENORE CROWE,
Chicago, Ill.

CATHERINE MCKENNA,
St. Louis, Mo.



JULIANA HELLRUNG,
Alton, Ill.

MIRIAM CONNELL,
Clarksburg, W. Va.



MARY MCCARTHY,
St. Louis, Mo.

MARGARET VIERHELLER,
St. Louis, Mo.



SARAH MAY MOWREY,
St. Louis, Mo.

HELEN FLORI,
St. Louis, Mo.



DOROTHY LEAHY,
St. Louis, Mo.





Class of



HELEN MCGIRL,
Odessa, Mo.

ANN HUEMLER,
St. Louis, Mo.



ROSEMARY SHAUGHNESSEY,
St. Louis, Mo.

VERNA FETT,
St. Louis, Mo.



MARIE DELCOMMUNE
St. Louis, Mo.

MARY HUNTER SCHMUCKE,
Jackson, Mo.



MARGARET CRANE,
Mobile, Ala.

MARY WALSH,
Rantoul, Ill.



MARY GOLDEN,
St. Louis, Mo.

1934



MARGARET WEBSTER,
St. Louis, Mo.

ROSE WUERZ,
St. Louis, Mo.

EVELYN TATE,
North Little Rock, Ark.

LOUISE SCHMUCKER,
St. Louis, Mo.

FRANCES BITTNER,
Brooklyn, N. Y.

VIRGINIA ELLET,
Dallas, Tex.

GRACE O'BRYAN,
St. Paul, Kan.

ROBERTA CUNIFF,
Rock Falls, Ill.

DOROTHY VENKER,
St. Louis, Mo.

HELEN KEELEY,
East St. Louis, Ill.





Freshmen





Class of



ANN HYNES, *Pres.*
St. Louis, Mo.

CATHERINE MERTZ,
Webster Groves, Mo.

MARY LUCILLE MOLLER, *Treas.*
Quincy, Ill.



DOLORES FALLON, *Secy.*
Amboy, Ill.



RUTH ANN HESTER,
St. Louis, Mo.



DOROTHY NELSON,
Webster Groves, Mo.



LOUISE HERMAN,
Augusta, Ga.



CECILIA GOLDEN,
St. Louis, Mo.



MAURINE KRUEGER,
Edina, Mo.



ROSEMARY HAYES,
St. Louis, Mo.



LUCILLE CHAPMAN,
St. Louis, Mo.



ABIGAIL WISE,
Barnhart, Mo.

1935



JEAN WILSON,
Kansas City, Mo.

MARGARET HANES,
Jerseyville, Ill.

ADDIE LAURIE HUBBARD,
Montgomery, Ala.

MAE SVOBODA,
Cleveland, O.

CATHERINE AZAR,
Montgomery, Ala.

MARGUERITE STABLER,
Birmingham, Ala.

MARJORIE WILLIAMS,
St. Louis, Mo.

MARY CARROLL,
Webster Groves, Mo.

VIRGINIA WEIR,
Webster Groves, Mo.

HELEN LISTON,
St. Louis, Mo.

DOROTHY GEIS,
Chicago, Ill.

VIOLA HELBLING,
St. Louis, Mo.





Class of



LORETTA MORIARITY
Kirkwood, Mo.

HELEN ZILLIKEN,
Chester, Ill.



PATRICIA DOYLE,
St. Louis, Mo.



MARY JANE DRISCOLL,
East St. Louis, Ill.

HELENE SMITH,
St. Louis, Mo.



MARY LOU GRIERSON,
Kirkwood, Mo.



ANGELA SKEES,
Cecilia, Ky.

PATRICIA DUVAL,
Webster Groves, Mo.



KATHLEEN LAUBENTHAL,
Mobile, Ala.

CLARE KOSTA,
St. Louis, Mo.

DOROTHY CASEY,
St. Louis, Mo.

1935



REGINA O'NEIL,
Los Angeles, Calif.

FRANCES McDONALD,
Ferguson, Mo.

BLANCHE MOWREY,
St. Louis, Mo.

RUBY McCORD,
Birmingham, Ala.

MARJORIE MANGAN,
Chicago, Ill.

FRANCES RICE,
St. Louis, Mo.

MABLEANN REILLY,
St. Louis, Mo.

CATHERINE DAY,
Hamburg, Ill.

MARY KELLY,
St. Louis, Mo.

ELIZABETH CHRISTMANN, *V.-Pres.*,
Webster Groves, Mo.

LOUISE MERRILL,
East St. Louis, Ill.



Sainte Genevieve

As the Mississippi sweeps through southern Missouri it passes a city of particular historical interest to Loretto girls. In the archives of the Order is preserved a deed, in the Spanish Commandant Valle's handwriting, which grants to the Sisters of Loretto a large tract of land on the river at Sainte Genevieve. The first convent was the old Valle home on the levee, given by Sister Catherine Delassus Pratte Valle, who had inherited it from her husband, Louis Valle. The daughter of Camille Delassus, her first marriage was to Sylvester Pratte. After his death on an expedition to buy furs from the Indians, she married Louis Valle. When he died in New Orleans she resolved to become a Lorette. She was a novice at the time the convent was founded by Mother Agnes Hart in 1835. After her reception into the Order she was made Superior of the Convent at Sainte Genevieve.

Activities



Organizations





Student Association

DOROTHEA SHUFORD
 DOROTHY KRAFT
 KATHRYN BUSSMANN
 JANE DALY

President
Vice-President
Secretary
Treasurer

*Student
 Council*



CARROLL
 BITTNER

STRECKER
 PEREZ

HAYES
 DRUMMOND

MCGINTY
 GOLDEN

The Student Association has successfully completed its fifth year of achieving once again the purpose for which it was founded, namely, to promote student welfare and to sponsor student activities, exclusive of those pertaining to spirituality, in accordance with the idealistic Webster principles and under the direction of the faculty.

The executive board of the Association, the Student Council, serves as the instrument through which the organization functions. Its membership includes student representatives elected by the various classes and by the faculty.

Some of the accomplishments realized by the Council during nineteen hundred thirty-one and thirty-two are: Freshman Week, including a faculty reception, a bridge party, a pajama party, and a sight-seeing tour through the interesting and historical sites of St. Louis; an active part in raising funds for the Archbishop's Charity Drive; two Sunday night socials given the first semester for the resident students; the Fall dance; a special campaign drive for students carried on by correspondence and personal interviews; the editing of the Campus Guide, a booklet containing information about Webster's activities and regulations; and lastly, the May Day celebration.

A year of such activity indicates that the Student Association continues to foster initiative, leadership and intelligent co-operation.



SHUFORD
 BUSSMANN

KRAFT
 DALY

Sodality

VIRGINIA DRUMMOND
JUSTINA HAYES
ELVIRA KRINGS
MAY HILLEMAYER

Prefect
Vice-Prefect
Secretary
Treasurer



SHUFORD REILLY WIBRACHT CRANE BURKE CASEY KLORER

Student
Spiritual
Council

Webster, since it is a Catholic College, holds that Religion should be the dominating force in life. In the classroom our professors set forth the principles of our duty to God. It is through the Sodality that we students make the practical application of these principles.

When Pere Leunis, a young Belgian Jesuit, organized the first Sodality in 1563, he made the cultivation of personal holiness and the promotion of active Catholicity its two-fold purpose. Today, we, Children of Mary, still hold these two ends as the goal of our endeavors. Our Sodality is not merely, as the religious organization in the college, an end in itself. Rather it is a training for Catholic leaders.



DRUMMOND HAYES
KRINGS HILLEMAYER

According to the plan suggested by Father Lord, the Sodality is directed by a Student Spiritual Council, consisting of the four Sodality officers, one representative from each class and the presidents of the C. S. M. C. and of the Student Association. This group meets every Monday at one o'clock to plan the general Sodality activities.

Since the Eucharist is the greatest force for personal holiness, we have endeavored, with a degree of success, to increase daily attendance at Mass and devotion to the Blessed Sacrament. Through the various committees Catholic Action was promoted in many phases.



Sigma Phi Theta

HELEN LEUER
 ELEANORA MCGINTY
 KATHRYN BUSSMANN

President
Vice-President
Secretary-Treasurer



MOWREY CASEY SKEES WEBSTER SHAUGHNESSY WISE MCCARTHY REIS FLORI MCKENNA FETT
 BITTNER REDDIN DALY HELLRUNG KLOER NELSON

Knowledge in a particular field flowers and dies to no purpose unless it brings the student closer to a more complete understanding of life and living and other spheres of learning. It was, therefore, to attempt to effect in some degree this necessary correlation that the Chemistry Department of Webster College in the Fall of 1928 established a Chemistry Club called the Sigma Phi Theta.

In the beginning the interests and activities of this organization absorbed, almost exclusively, students of Chemistry. But the past year has seen an interesting growth within the club; a definite effort to attract and include, not merely those concerned primarily with Chemistry, but also scholars interested in those natural phenomena of every-day existence which hinge on the Science of Chemistry.

From the viewpoint of the modern mind that craves variety, the monthly meetings leave little to be desired. Vitamines in the food we eat, substances in the clothes we wear; these topics are made vital factors by discussion and argument. Certain of its value and import, Sigma Phi Theta, highly democratic, asks as a requisite for membership no more, no less than a generally normal healthy curiosity in life and its by-products.



LEUER BUSSMANN MCGINTY

Poetry Club

GENEVIEVE McBRIDE
FRANCES WEBER
MARGARET McCABE

President
Vice-President
Secretary-Treasurer



BITTNER REDDIN GOTTLOB WEBSTER JANES VENKER WILDE SCHMUCKER GRAVES ROCHOW KRINGS

The Poetry Club, as always, is upholding the dignity and prestige of being the oldest and most exclusive organization at Webster College. This year it has succeeded in maintaining its high standards. Its capable president has guided the members through an intensive study of the Ballad. The club has had the privilege of hearing Mr. Patrick Gainer, of St. Louis University, lecture on the ballads and folk songs of our own mountain region. Mr. Gainer has made a special study of this type of literature.

This lecture and other interesting events were arranged as open meetings so that those who do not belong to the club might have the pleasure of attending.

Nor has the second purpose of the club, that of encouraging the creative genius and talent of members, been ignored. To Frances Weber has been given the greatest distinction that the Poetry Club can bestow upon a Senior. She has been chosen Ivy Poet and to her goes the privilege of reading her own poem at the Planting of the Ivy on Class Day.

An important feature of this year's activity is the amending of the constitution by adding another office to the administrative body, that of Historian. The office is a permanent one, the officer to be elected annually. Ann Russell Janes is the first to fill this office and to her will fall the task of compiling a record of the Poetry Club from its foundation to 1932.



McBRIDE McCABE WEBER



Sigma Epsilon Rho

MARIE WALSH
RUTH MCKENNA
ELLEN PRENDERCAST

President
Vice-President
Secretary-Treasurer



HANGGE
DRUMMOND
HENNESSEY

WEBER
SHUFORD
BURTSCHI

GOTTLob
ALLISON
CARROLL

WILDE
FLYNN
JANES

PEREZ

HAYES
KRAFT
McCABE

CUMMINS
CORLEY
WUERZ

CAVANAUGH
ZILLIKEN
BONGNER

If there is any branch of learning which typifies the spirit of a liberal arts education, it is the study of the classics. And so in their zeal better to acquaint themselves with the ancient writers, to acquire an appreciation of that glory which was Rome's, to strengthen their esteem of the early Christian writers, to attain a more perfect mastery of their own English vocabulary and diction, interested students banded themselves together in a Classical Club, the Sigma Epsilon Rho.

This year instead of a perusal of the pagan writers, they have engaged in a study of the consummate glory of the Christian writers, the Roman Missal. As nothing gives one a better appreciation and understanding of the Sacrifice of the Mass than the Missal, and also as its use is the only intelligent way of hearing Mass, the students decided that this was an invaluable project. Papers were given on the use of the Missal, its historic and literary value, the origin of the parts of the Mass, and other interesting subjects relating to the Missal.

The principal activity of the club this year was active participation with the St. Louis University Club in inaugurating the weekly broadcast of "Quarter Hours with Classical Antiquity."



WALSH

PRENDERCAST

MCKENNA

Mathematics Club

MAY HILLEMAYER
ELVIRA KRINGS
FLORENCE BROEKER

President
Vice-President
Secretary-Treasurer



STRECKER	ROYAL	REDDIN	BURTLE	DELCOMMUNE	LEUER	DALY	KLORER	BUSSMANN
CASEY		CRANE		MC GINTY	SMITH		GOLDEN	WUERZ BLOCK

The Mathematics Club was one of the first clubs to be organized at Webster. It held its first meeting in October, 1927, and since then it has functioned actively under the careful guidance of Sister Mary Borgia, our Dean of Studies and the Head of the Mathematics Department. The foundation of this society, for the benefit and pleasure of those majoring or minoring in mathematics, was a big step forward in the advancement of interest in this science. The club has progressed rapidly each year, and annually there is a large increase in the number of members. This year there has been attained a membership large enough for great variety of opinion and yet still small enough for effective discussion.



HILLEMAYER BROEKER KRINGS

Each month a meeting is held in the Mathematics room, scholarly worthwhile papers are read and discussed. The topics of these papers are always of universal appeal. Three of the subjects of discussion thus far in the year are: "Some Interesting Problems in Loci," and "The Determination by Geometry," and "Designs for Parquet Flooring." These were well done, and presented applications of the study of mathematics.

Since the primary purpose of the club is to foster an interest in mathematics, guests are always welcome at the monthly meetings.



Pleiade



DOOLING HENNESSY BURKE DAY GOTTLOB DAY WILDE

A new organization has been introduced into Webster's list of extra-curricular activities. As may be divined from the title, this club is composed of students who are majoring or minoring in French. Membership includes only those Seniors and Juniors who are elected to the club.

Miss Mary Alice White, instructor in French, organized the club, when the students manifested an eagerness to learn about current affairs in France. The meetings furnish an opportunity for discussions of interesting phases of French history and literature, as well as existing customs.

The name has been taken as an ideal for each member of the club. The original Pleiade of France was a group of seven learned men who were considered the literary stars of that country. In this circle standards were set for literary achievements.

With such noble aspirations, and co-operation in interest, the students hope to become thoroughly versed in the art of French conversation. Perhaps some day the goal of every student may be attained—Paris! Should this hope be realized every member must perfect her accent in order to associate with true Parisians. The Pleiade hopes next year to build upon the splendid foundations which its primary year has laid.



MISS MARY ALICE WHITE
Sponsor of the Pleiade

Loretto Players

JOSEPHINE REDDIN
MARGARET McCABE
ELVIRA KRINGS
LUCILLE JOHNSON

President
Vice-President
Secretary
Treasurer



MOLLER MCCARTHY CARROLL CHRISTMANN HESTER
AZAR STABLER O'NEIL BURTLE SCHMUCKER DELMORE
LISTON CARROLL HELLRUNG

This year the Loretto Players kept up the stride which they have set in other years. Although the Dramatic Department suffered greatly in the loss of Sister Marie Anthony, whose stage settings used to complement and enhance all the productions, it gained two able new staff members in Sister Dorothy Marie and Miss Helen O'Brien. Due to the ill health of Mrs. Anna McClain Sankey most of this year's presentations were under the direction of Mr. Harry McClain. Loretto Players flourished under this new coaching.



REDDIN MCCABE
KRINGS JOHNSON

The first event on the Dramatic calendar was a repetition of last year's highly successful production, "The Cradle Song." The cast was, for the most part, unchanged. Helen O'Brien gave another superb portrayal of Sister Joanna of the Cross; Alice Widmer, Catherine Cody, Ann Ryan and Jo Reddin repeated their parts with exquisite finesse. Lucille Johnson played with unusual ability, the role which Mary Hickman interpreted so beautifully last year.

The Freshmen and Senior dramatic students were presented in recitals in November and February. The spring work of the entire dramatic department was concentrated on the immortal "Romeo and Juliet." The cast worked earnestly to uphold our high standards of beauty and artistry.



Orchestra



MERRILL, O'BRYAN, KEELEY, CAFFERY, CRANE, DELMORE, CARROLL, LEAHY, MOORE, STABLER, AZAR, HUBBALD, MCCARTHY, KRUEGER, QUINLEVEN

Our new college orchestra was organized at the request of both faculty and student body early in this school year. As the orchestra progressed and grew, so did its popularity. The Loretto Foundation invited it to open the monthly Forums by presenting several selections. This was an honor for the new orchestra, and besides compensating its members for their hard work, it also provided a motive for still more diligent and serious practice.

A novel feature of musical entertainment afforded is the Quintet. It is composed entirely of orchestra members and consists of two violins, a cello, Mellophone, and piano. This musical quintet has given several programs in recitals and also over Station WEW on the Webster Radio Hour.

At present the orchestra consists of a piano and thirteen instrumental pieces. There are three wind instruments, eight string instruments, and the drums. The orchestra will play the grand march for the Academic processional this June at graduation. Several additional pieces will be taken in before that occasion.

Webster College can well boast of her new orchestra. It is an excellent example of the Webster Spirit of Co-operation, Talent and Ability.



QUINTET
LEAHY MCCARTHY DELMORE KEELEY CAFFERY

Choral Club

MARGARET DELMORE
LEONA SIMMA
PEGGY WEBSTER

President
Vice-President
Secretary-Treasurer



First Row—McCord, Moriarity, Driscoll, Fallon, Hubbard, Day, Day, Day, Weber, Azar. Second Row—Caffrey, Moore, Tate, Venker, Laubenthal, Wilson, Burtshi, Connell, Augustus, Kinberger, McDonald. Third Row—Quinliven, Rogles, Chapman, Liston, Simma, Bussman, Webster, O'Neil. Fourth Row—Carroll, Herman, Moller, Bongner, Ball, Smith, Perez, Delmore, Stabler, McCarthy. Fifth Row—Ellet, Stabler, Grierson, Kosta, Skees, Hanes, Schwartz, Shuford, Wise.

With each passing year the Choral Club has achieved greater progress. Annual tryouts in early October, 1931, revealed a rich supply for vocal material among the freshmen and newcomers to Webster College. Thirty-two new voices were added to the standing chorus of fifty. Weekly rehearsals were held every Wednesday in the college auditorium, and during the months of April and May an additional practice was held each Monday evening in order to do more intensive work on the "Missa Orbis Factor", which was sung at the Senior graduation Mass in June.



DELMORE SIMMA
 WEBSTER

Throughout the scholastic year the Choral Club has participated in many programs and recitals. Christmas eve, by special request, a group was sent to carol at the Hotel Chase for a charity benefit. In February the Choral Club was very active in the Washington program held here at college. The club rendered two numbers, one of which was the new national Washington song, "Father of the Land We Love," composed especially for the Washington Bi-centennial. Another honor which was added to the past laurels of the Club was an invitation to sing at the National Peace Conference Convention, which met at the Coronado Hotel on Washington's birthday.



Kappa Gamma Pi

ST. LOUIS CHAPTER

THERESA SHEA
THELMA GESELL
GERTRUDE JALLEY

Regent
Vice-Regent
Secretary-Treasurer



JALLEY

SHEA

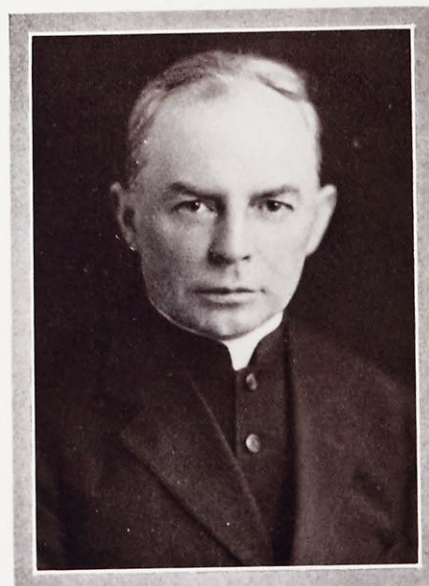
WOLFF '31

GESELL

CLARK '31

Organized in 1926 by the Very Rev. Francis V. Corcoran, C. M., Ph. D., together with the deans of the various colleges, Kappa Gamma Pi stands, a fast link between the bedrock of higher Catholic Education and the mountain of Higher Catholic World activity. The Charter members of this National Scholastic Honorary Society were selected from the classes of June 1927 and June 1928. Each graduating class may name no more than ten per cent of its numbers for membership. Election to this organization presupposes graduation with a Cum Laude, a Magna Cum Laude or a Summa Cum Laude, from a Catholic Women's College. But it implies more than high scholarship. It points to past worthwhile endeavors. It intimates a scholastic life earnestly, sincerely, and energetically spent. It bespeaks the grounded ability to follow; the intelligent desire to lead.

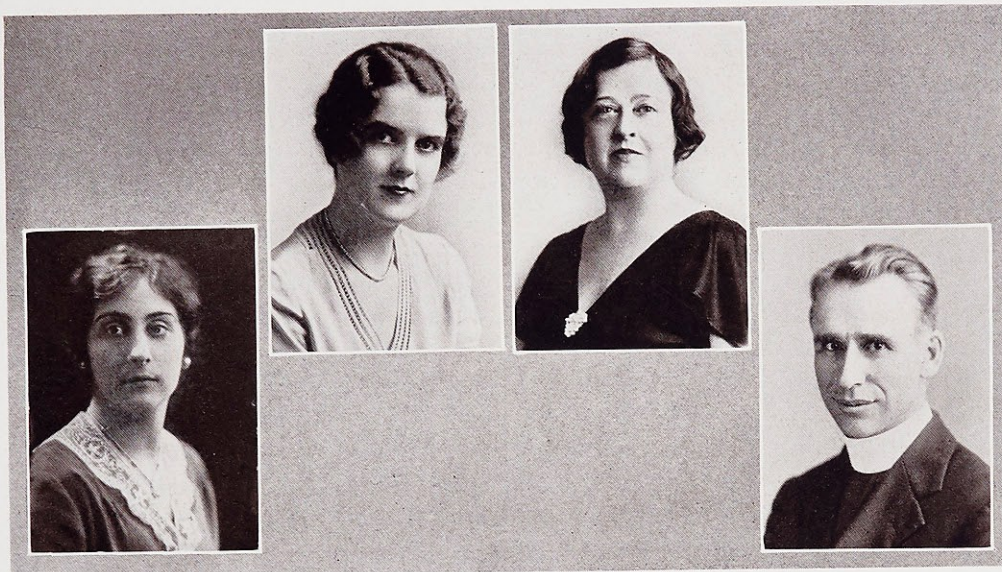
Very like the Faith of which it is a working factor, Kappa Gamma Pi has much to offer to those who are not fearful of giving of their chiseled talents. And in a world dominated by a system of merit and reward, the best seems little enough to ask for an opportunity to help carry on, under the interest and guidance of this Catholic Honor society, the ceaseless labors entailed in Catholic Action. It is with somewhat more than a mere twinge of pride that Webster claims affiliation with Kappa Gamma Pi.



REV. F. V. CORCORAN, C. M., Ph. D.

Loretto Foundation

MARY McDERMOTT *President*
 REV. THOMAS M. KNAPP, S. J. *Spiritual Director*
 THERESA SHEA *Secretary*
 ELIZABETH NEWELL *Assistant Secretary*



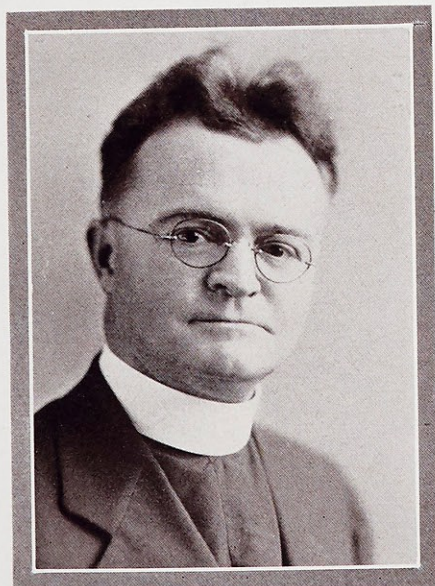
NEWELL

SHEA

McDERMOTT

REV. KNAPP, S. J.

The Loretto Foundation is an organization of Alumnae and friends of Webster College who wish to foster loyalty to the Sisters of Loretto and further the interests of the Order. The Foundation has for its president Miss Mary F. McDermott; vice-presidents, Mrs. J. Fitzgerald, Mr. J. A. Burke, Mr. H. T. Bussman, Mrs. J. A. Colnone, Mrs. J. L. Delmore, Mrs. F. W. Forshey, Mr. D. J. Hanlon. Dr. G. F. Donovan is honorary president.



REV. RAPHAEL C. MCCARTHY, S. J.
 Forum Lecturer

The outstanding activities of the Foundation this year were the Ladies' Closed Retreat, given March 11-13 by Reverend T. M. Knapp, S. J., the forums, and the musical teas. The first forum was held on November 5. Mr. Paul Ryan, President of the Harvard Club in St. Louis, spoke on "Modern Trends in Education". The remaining forums consisted of a series of six lectures on "Safeguarding Mental Health," by Reverend R. C. McCarthy, S. J., Regent of the Schools of Divinity, Philosophy, and Science of the St. Louis University.

The third major activity of the Foundation was the series of four literary-musical teas held at the homes of Mrs. J. R. Medart, Mrs. Fred Holhkamp, Mrs. F. M. Switzer, and Mrs. F. W. Forshey. The splendid attendance at these delightful functions manifests a growing interest in the Foundation and its activities.



Catholic Students Mission Crusade

AUDREY KLOSER
RUTH MCKENNA
MARY VIRGINIA CUMMINS
LENORE CROWE

President
Vice-President
Secretary
Treasurer

In the center of such active Catholicity as that which is known at Webster it is not surprising that the Catholic Students Mission Crusade should find a prominent place on the extra-curricular schedule. And why shouldn't such a worthy cause as that which the crusade fosters play an important part in the life of Webster Collegians? Does not the beautiful example of our own Loretto Sisters laboring in both the home and foreign mission fields loom ever before us?

When the College opened Webster answered the battle cry of the Catholic Student Mission Crusade, and early organized the Nancy Havern Unit. Just as the aim of the Crusaders of old was to spread Christianity, so also the objective of us modern Crusaders is to work valiantly for the cause of the Mission Crusade, namely, to win "The Sacred Heart for all the world, the whole world for the Sacred Heart."

The Loretto Mission in China has been the primary object of our foreign mission endeavor, though other fields have also been beneficiaries. Both the spiritual and the temporal needs of these less fortunate souls have been considered by the Webster Mission Crusaders.

With regard to the home missions the Nancy Havern Unit of the C. S. M. C. has accomplished much. Webster Crusaders have very literally heeded the call of Christ: "Going therefore teach ye all nations". Several well-organized catechism centers and Sunday Schools are the result of the untiring zeal of these present-day Crusaders. Twice a year the members of the Nancy Havern Unit also distribute food and clothing to the poor of St. Louis, irrespective of creed and color. But the Nancy Havern Unit concerns itself not alone with the practical application of the principles inculcated by the Catholic Students Mission Crusade. It is occupied also with the technical and theoretical side of mission work.

Webster can proudly boast of having as its Directress Sister Mary Nerinckx, one of the first Sisters of the United States to attend the Crusade School in Cincinnati. We are gratified also at the results attained by our various efforts. Paladin Honors have been conferred on a fair number of our active Mission Crusaders. Inspiring lectures given by veteran Missionaries are part of the year's mission program. And Webster always has had a representative at the National C. S. M. C. Conventions.

And so the Nancy Havern Unit, by its regular meetings, its monthly Mass and Communion in a body, and its contributions to benefits, has instilled into the hearts of its Crusaders a deep and true appreciation of the missions, and a sincere desire to do their part in winning "The whole world for the Sacred Heart". It is the fervent hope of the officers that this fertile enthusiasm shall endure.



KLOSER
CUMMINS

MCKENNA
CROWE

Webster Athletic Association

KATHRYN BUSSMANN
 DOROTHY KRAFT
 FLORENCE BROEKER
 MARGARET WILDE

President
Vice-President
Secretary
Treasurer



A successful business is well organized. Our athletics is a successful business, a condition which presupposes organization. The Webster Athletic Association is the body which formally determines what we shall achieve in many fields, and which defines our athletic schedule, so that without confusion, we may participate in many activities and do so successfully.

Under the guidance of our Athletic Director and our chosen officers, the sports-woman's calendar is arranged, and activities are financed. The Association keeps things going all the year 'round, from the beginning, a game of volley ball in September, to the end, a banquet in May.

We proceed very systematically from volley ball to basketball, the high light of the year. In basketball, the Association proves its usefulness by appointing squad leaders to assist in the routine training, score keepers, and cheer leaders. Through the organization, "pep" rallies are held before inter-collegiate games, a policy which, of course, makes for good attendance at these games and indirectly inspires victory.

The basketball season occupies some months. With Spring comes a rush of delightful seasonal sports. Baseball, track, and tennis are carried on almost simultaneously, culminating in a grand field meet and banquet. Throughout these months (April and May), the Association is busy with details, such as providing scorers, referees, keeping the courts and tracks in condition, selecting equipment and awards.

The Association follows the general round of sports: volley ball, basketball, tennis, and track more publicly since they are as a whole the chief current events, as it were, and every individual student is deeply interested; but it has also under its direction (through the squad leader method) several minor sports for those who care for them. Hiking, swimming, skating, golf, and horseback riding are conducted in this manner.

The entire wheel of activities has as its axis the point system, drawn up and carried out by the Association. This system supplies an incentive for anyone who has ability in any athletic field, and thus creates a wide-spread interest. The Association deserves much credit for the progress it has made in the past five years. The students are fortunate to have the Webster Athletic Association, as it functions smoothly and well. It is a business thoroughly organized and eminently successful.

With the graduation of the senior class of 1932, W. A. A. will lose some very active members, notably Kay Bussmann, the president of the Association, who undoubtedly is finely representative of Webster College Athletes; Jo Reddin, last year's president, who has won many awards for her achievements; Gen McBride, our wonderful basketball forward; Gretel Wilde, the treasurer of the Association; Rosie Gottlob, who played guard so well. Webster will long remember them.



BUSSMANN
 BROEKER

KRAFT
 WILDE



Publications



The Lauretanium



LAKME PEREZ

LAKME PEREZ
Editor-in-Chief

VIRGINIA HENNESSY
Assistant Editor

JANE BURKE
Art Editor

The 1932 Lauretanium is ready for the press. The planning, working, and worrying of one year is practically over. And strange as it may seem, we are almost sorry. Indeed, for the whole staff it has necessitated hard work and sacrifice of time and self. We have known moments of bitter disappointment and terrible fear. But because we have loved working on the year-book, we count these seeming difficulties as naught. It has been a marvelous experience fraught with splendid opportunity—opportunity to learn some small something of the intricate technicalities of the production of an annual. Through our professional contacts we have gathered some knowledge of the intensely interesting processes of photography, engraving, printing and binding. We have learned to appreciate the difference in paper stocks, inks, types, and effectiveness of various colors. It has been a source of realization of the necessity of precision and exactness, and of the costliness of the violation of these requisites. We have encountered the finest calibre of business men and learned from them something of modern industry and economics, of which we had so meagre a knowledge.

Moreover, it has been a pleasure. We have known the joy of creation. Through our activity an abstract idea, a theme has become a definite means of concretely recording the history of one year at Webster College. Slowly, laboriously we have witnessed our book emerging from a maze of schemes and dreams into an actual reality.

Another factor has made the production of this Lauretanium a pleasure. It has been a burden to no one. Every



VIRGINIA HENNESSY

JANE BURKE

The Lauretanium



JANE DALY
Business Manager

ROSEMARY CORLEY
Circulation Manager

ELVIRA KRINGS
Advertising Manager



JANE DALY

member of the staff has earnestly and diligently done her best, the faculty have been most generous with their assistance expressed in sage advice, the student body has co-operated thoroughly by having pictures taken on time, writing assignments, supporting year book benefits and slaving to finance this publication in economic times almost prohibitive.

We have striven to feature particularly the seniors because it is their last book and one of which we want them to be very proud. The faculty section has been enlarged by providing thumb-notes under each professor's name, by giving a full page to our new President and one to our dear deceased friend, Father Ryan. This year we have given the snap section a little more importance by making it a subdivision of the feature section.

Our theme is an attempt to evince from the wealth of history and lore of the Mississippi something of its beautiful romance—especially at Lake Itasca, Saint Louis, Sainte Genevieve, Memphis and the point where the river empties into the Gulf.



ROSE MARY CORLEY

ELVIRA KRINGS

We have further carried out the theme by making the evolution of river craft the subject of the illustrations for the classes—the modern Herbert Hoover, the Seniors; the steamboat, the Juniors; the sail boat, the Sophomores; and the crude canoes, the Freshmen.

If in reading those pages you derive some knowledge of the high standard of our College, its ideals, personnel and activities we shall deem our efforts amply repaid.

The Loretine



ROSEMARY GOTTLOB

ROSEMARY GOTTLOB
Editor

JOSEPHINE REDDIN
Just Among Ourselves

HELEN GRAVES
Exchange Editor

JANE BURKE
Art Editor

The *Loretine*, quarterly literary publication of Webster College, has endeavored to carry forward the flaming torch of scholastic literary accomplishment during the year 1931-1932; and it has been the aim of the four issues to present a comprehensive expression of twenty-six years of growth and development.

The title, *Loretine*, embodies the unfailing source of inspiration, courage, and the spirit of progress. From an unsteady spark of literary light our *Loretine* has increased its strength year after year until today its unfaltering flame shines brightly over the field of collegiate publication. The *Loretine* has passed its jubilant quarter-century mark and is continuing to sponsor intelligent activity in the production of verse and composition of high merit. Essays, short stories, book reviews, verse, and articles are characterized by genuine appreciation and scholarly work.

The *Loretine* of 1931-1932 displayed several special points of interest. "Then and Now", the Alumnae edition, was a work of well-executed contrasts. It clearly expressed the old, yet ever new, charm of our alma mater. The inaugural address of Dr. George F. Donovan, Ph. D., President of Webster College, contributed added distinction to this excellent number.

In a more serious vein a Victorian issue was dedicated to our faithful chaplain, Reverend J. P. Donovan, C. M., in honor of his silver jubilee celebration. The contents of this number furnished a survey of the Vic-



REDDIN

BURKE

GRAVES

The Loretine



MARIE WIBRACHT
Business Manager

MARY BROWN
Near and Far

GENEVIEVE McBRIDE
Book Notes

MARIE WALSH
Circulation Manager



MARIE WIBRACHT

torian era discussed impartially by the various departments of the college, and was enhanced by clever verse forms in keeping with the general theme.

The Commemoration of George Washington's Bicentennial celebration provided a spot of interest in the Spring edition, and disclosed outstanding talent in short story and word sketching. The Summer number offers a great variety of enjoyable reading material for *Loretine* patrons. This final number is edited after school is dismissed and serves to keep the girls interested in literary achievement during the vacation.



BROWN

WALSH

McBRIDE

Loretine Week placed the publication in a new field of work. The resulting increase in circulation stimulated the proper spirit of appreciation due such a collegiate edition among the students. It also obtained a source of pleasure for many new acquaintances and provided a valuable advertising medium for Webster.

The obvious importance of a strictly student publication of this type to Webster College need not be stressed. The *Loretine*, being well established on its second lap toward the half-century mark, besides creating a valuable opportunity for activity in the field of literary periodicals, is, undoubtedly, fostering a true love for literature in the hearts of the students. Its value is recognized by the students and alumnae who cooperate to make the *Loretine* what it is today, and all it hopes to be in the future.



The Web



MARY VIRGINIA CUMMINS

CLARA ROCHOW

MARY VIRGINIA
CUMMINS
Editor

CLARA ROCHOW
Assistant Editor

FRANCES BITTNER
Editorial Writer

MARGARET McCABE
Feature Writer

VIRGINIA DRUMMOND
Sodality Editor

ELEANOR CARROLL
Feature Writer

A college newspaper is published not only to keep those within the walls informed concerning current activities, but also to let other colleges and universities know what transpires in a fellow institution.

Eight years ago, when the college was quite young, a single mimeographed sheet, entitled Listen, published irregularly, carried the news of college activities. During the second and third years the paper became a printed sheet; and in the fourth year of its existence this important organ, renamed the WEB, began to appear more regularly, and in newspaper form with headlines, decks, and well-balanced pages. The following year the WEB came out a five-columned bi-monthly with large banner heads, a variety of type in the headlines, and even earmarkers. It is today a mature newspaper, boasting of five columns, varied type heads, and true journalistic style, and it pays for itself by subscriptions and advertisements.

There are work and worry entailed in editing this publication, but the thrill of the task lightens the labor.

Formerly the staff was made up exclusively of upperclassmen. This year exception has been made to arouse in the Sophomores and Freshmen an interest for the work and to give them experience that will prove profitable to them later in their college course. Like the paper, the staff has grown. It now consists of twelve members: Editor-in-Chief, Assistant Editor, Business Manager, Circulation Man-



BITTNER
DRUMMOND

McCABE
CARROLL

The Web



KATHRYN BUSSMANN,
Business Manager

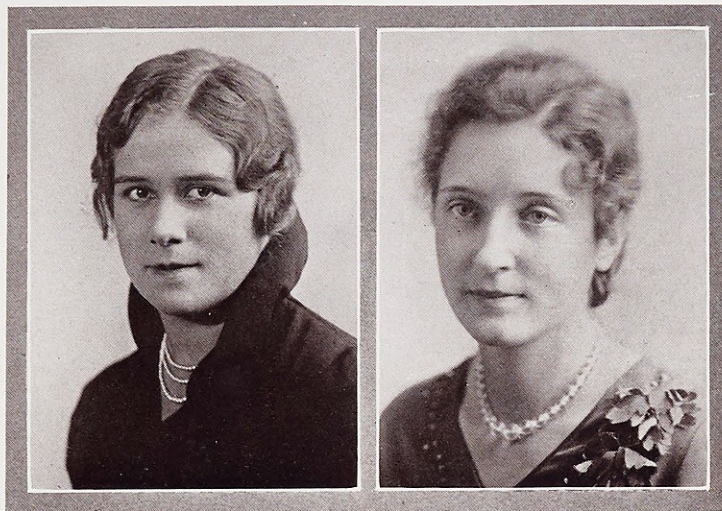
INGA BLOCK
Advertising Manager

JANE BURKE
Alumnae Editor

MARGARET DELMORE
Social Editor

ROSEMARY
SHAUGHNESSY
Library Editor

MARGARET WEBSTER
Athletic Editor



KATHRYN BUSSMANN

INGA BLOCK

ager, Sodality Editor, Alumnae Editor, Athletic Editor, Library Editor, Chat Club Editor, Social Editor, Feature Writer and Editorial Writer. Each editor has her specific work. We do not entirely lose track of the "old" girls. The Alumnae Editor assures us against such a disaster. Our curiosity concerning "Week End" doings, where vacations are spent and feasts tendered, is satisfied by the interesting "Echoes of the Halls". Columns seem to have become *the* thing in most newspapers. So this year "Caught in the Web" made its appearance. Brief character sketches of students amusing incidents which occur "under cover", light verse, and jokes tend to make this column personal, entertaining, and popular. Cleverly written editorials give a more formal opinion of questions, activities and situations.



BURKE
SHAUGHNESSY

DELMORE
WEBSTER

Copy is due on Wednesday noon previous to the Saturday on which the paper goes to press. It is read and corrected, heads are written, and it is typed before it is sent to the printer. On Saturday, the Editor and Assistant Editor read proof and make up the dummy. On the following Wednesday the publication is distributed to the faculty and students.

We take this occasion to compliment the staff of 1931-1932 for their splendid work. It is indicative of long hours of thought and of industry. Surely they must find satisfaction in the realization that their task is well done.



..Arts..





Conservatory of Music



Office of the Director of the Conservatory

No effort has been spared to make the Loretto Conservatory comply with standards. Being incorporated under the laws of the State of Missouri, it may grant teachers' certificates and diplomas in Music. It is affiliated with the Chicago Musical College and is an extension center of that institution, which is a member of the National Association of Schools of Music and has for its president Karl D. Kinsey and for its director Rudolf Ganz.

The conservatory may confer degrees of Bachelor of Science in Music, and Bachelor of Music. A student has the following choices of a major: Voice, Violin, Organ, Piano, or Composition. The curriculum includes courses in the History, Appreciation, and Theory of Music; Harmony; Ear Training; Counterpoint; Musical Form; Sight Singing; Canon and Fugue; Analysis, and Public School Methods. A conveniently located parochial school affords the student of the Conservatory a splendid opportunity for practice teaching.

In February, Virginia Caffrey and Dorothy Leahy competed in the scholarship contest sponsored by the Eighth District of National Federation of Music Clubs. Though neither won the scholarship, both were a credit to their college.



V. CAFFREY D. LEAHY
Entrants in the contest for the Federation of
Music Clubs Scholarship.

Art Department



An art studio

Because of the moral and educational value of art, a department devoted to giving training in this subject is an essential feature of every institution purporting to give a well-balanced educational equipment for life.

Art is equally valuable whether it is to be followed as a vocation or merely as a hobby. As a hobby it is cultural and useful as well as entertaining. A passing knowledge of color value in dress and home furnishing will prove to be of great value to anyone.



Bust of Sister Louise executed by Miss Miller

There are a great number of courses that must be offered by every well-equipped art department. These include pencil and pen sketch, water color, oil painting, charcoal drawing from casts, still life, sketching from life, portrait, poster design, dress, costume and jewelry design, interior decorating, and clay modeling.

This last course was introduced into Webster's Art Department during the school term of 1930-1931. Though a new addition to the Art Curriculum, it gave to the school several valuable objects.

The most cherished of these is a bronze bust of Sister Louise, Dean of Webster College during its formative period. The piece was presented to the school by the Alumnae Association on Alumnae Day during Commencement Week of 1931.



Loretto Players

“Rehearsal” and “Overtones”



Eleanor has a difficult time making the cast rehearse in “Rehearsal”

In the mid-dramatic season the senior students of the department gave a group of three one-act plays that were very well done. The first was “Rehearsal”, presenting Marie Schmucker, Margaret McCabe, Eleanor Carroll, Loretto McCarthy, Elizabeth Burtle and Dorothy Royal, as themselves. It portrayed the trials of a director of dramatics, what with the performance but one week off, and not a soul on time for rehearsal. Finally the cast comes straggling in one by one, each with a different excuse. Loretto and Elizabeth have been consoling the sophomores. (For further information, consult their Logic Professor.) After the cast is assembled they make ludicrous pretenses at disguising their ignorance of their lines. After futile attempts to make something beneficial of the rehearsal, Eleanor dismisses them until tomorrow evening, which you feel sure will turn out much the same as this evening.

The second of the group was “Overtones”, which evinced very clever interpretation from Josephine Reddin, as Harriet, Margaret McCabe, as Hetty, Margaret Delmore, as Margaret, and Regina O’Neil, as Maggie. A very lovely tea table is set in the drawing-room of Harriet, who is expecting Margaret, the wife of an artist whom Harriet refused to marry because he is poor. Margaret arrives with the distinct purpose of persuading Harriet to let her husband paint her portrait. During the entire interview the two women, who ardently despise each other, are very, very sweet, while back-stage are two veiled figures excitedly speaking aloud the thoughts of the calm ladies at tea. After Harriet has made the appointment to have her portrait painted by the man whom she still loves, but has forsaken for her wealthy husband, her other self almost



A tense moment in “Overtones”

Loretto Players

"Pierrot"



Pierrette dies in Pierrot's arms

strangles the other personality of the poor, loving, jealous wife of the artist. But they sweetly bid each other adieu—"and life goes on."

The third play presented Pierrot in "His Play". The cast was well selected. Ruth Hester played Pierrot, Lucille Johnson, Pierrette, and Elvira Krings, Columbine. Poor Pierrot could not forget his acting. He always longed for highly dramatic parts. This evening he comes home to his cozy little nest where his darling Pierrette is busy preparing dinner. While they are waiting, Pierrot conceives an idea for a splendid play and insists they portray it just for the sport of the thing. Pierrette is unwilling, but finally consents after he has routed out the costumes and asked Columbine to come down from the apartment upstairs to play the third role. His play revolves about a man (Pierrot) who is deeply in love with a girl (Pierrette), but she is lukewarm in her affection. In order to awaken in her the burning flame of love he pretends to be enamoured of another girl (Columbine, who really does love Pierrot).



Pierrot makes love to Columbine

Pierrot plays his part so well that Pierrette, believing he no longer loves her, dies of a broken heart. Poor Pierrot sees her swoon, but thinks she is merely acting, and goes on with the play. After several moments the cruel realization comes to him and he clasps his dead beloved to his heart, sobbing from the depths of his sorrow, begging her forgiveness. The curtain falls over him rocking his precious, dead Pierrette in his arms. All three members of the cast deserve credit for their splendid demonstration of dramatic ability and of sympathetic portrayal of difficult roles necessitating subtle interpretation.



Loretto Players

"It's a Ming!"



Miss Sprockette pronounces the vase a Ming

CHARACTERS

Agnes, who owned the vase.....	MARIE STABLER
Margaret, who ran the sale.....	HELEN LISTON
Minerva, there's one in every school.....	ELIZABETH CHRISTMAN
Phyllis } they start the trouble.....	{ MARY CARROLL
Marcella }	{ LORETTO MCCARTHY
Millie, who loves her Charley Boy.....	CATHERINE AZAR
Miss Jones, who was meant for the stage.....	MARY LUCILLE MOELLER
Nora, whose bark is worse than her bite.....	REGINA O'NEIL
Aunt Lucinda, whose bite is as bad as her bark.....	RUTH HESTER
Miss Sprockette, fond of antiques—in a way.....	JULIANA HELLRUNG

"It's a Ming" was presented in the College Auditorium December 14, 1931, by the Freshmen Dramatic Students under the direction of Mrs. Anna McClain Sankey, assisted by Thelma Pape. The production was such a splendid success that with the permission of the Dean the play was repeated for the benefit of the year book. The receipts went toward the Freshman Class quota.

The story concerns a group of girls who try to raise a fund for their Alma Mater by holding an auction and involve themselves into tremendous difficulties with a fussy aunt and a fraudulent art connoisseur. After provoking much mirth the play ends happily, as do all good plays.



Minerva asserts her rights of ownership.

Loretto Players

"Romeo and Juliet"



ACT V. THE DEATH SCENE

DRAMATIS PERSONAE

Prologue.....	MARGARET McCABE
Escalus, Prince of Verona.....	MARGARET McCABE
Paris, a young nobleman.....	JOSEPHINE REDDIN
Montague.....	LORETTO McCARTHY
Capulet.....	REGINA O'NEIL
Romeo, son to Montague.....	HELEN O'BRIEN
Mercutio, kinsman to the Prince and friend to Romeo.....	RUTH HESTER
Benvolio, nephew to Montague and friend to Romeo.....	ELEANOR CARROLL
Tybalt, nephew to Lady Capulet.....	MARY LUCILLE MOLLER
Friar John.....	DOROTHY ROYAL
Balthasar, servant to Romeo.....	ELIZABETH BURTLE
Abraham, servant to Montague.....	ELIZABETH CHRISTMANN
Sampson } servants to Capulet.....	{ DOROTHY ROYAL
Gregory }	{ CATHERINE AZAR
Peter, servant to Juliet's nurse.....	MARIE SCHMUCKER

An Apothecary.....	ELIZABETH CHRISTMANN
Page.....	ADDIE LAURIE HUBBARD
Lady Montague, wife to Montague.....	JULIANA HELLRUNG
Lady Capulet, wife to Capulet.....	MARY CARROLL
Juliet, daughter to Capulet.....	LUCILLE JOHNSON
Nurse to Juliet.....	THELMA PAPE



DOROTHY ROYAL

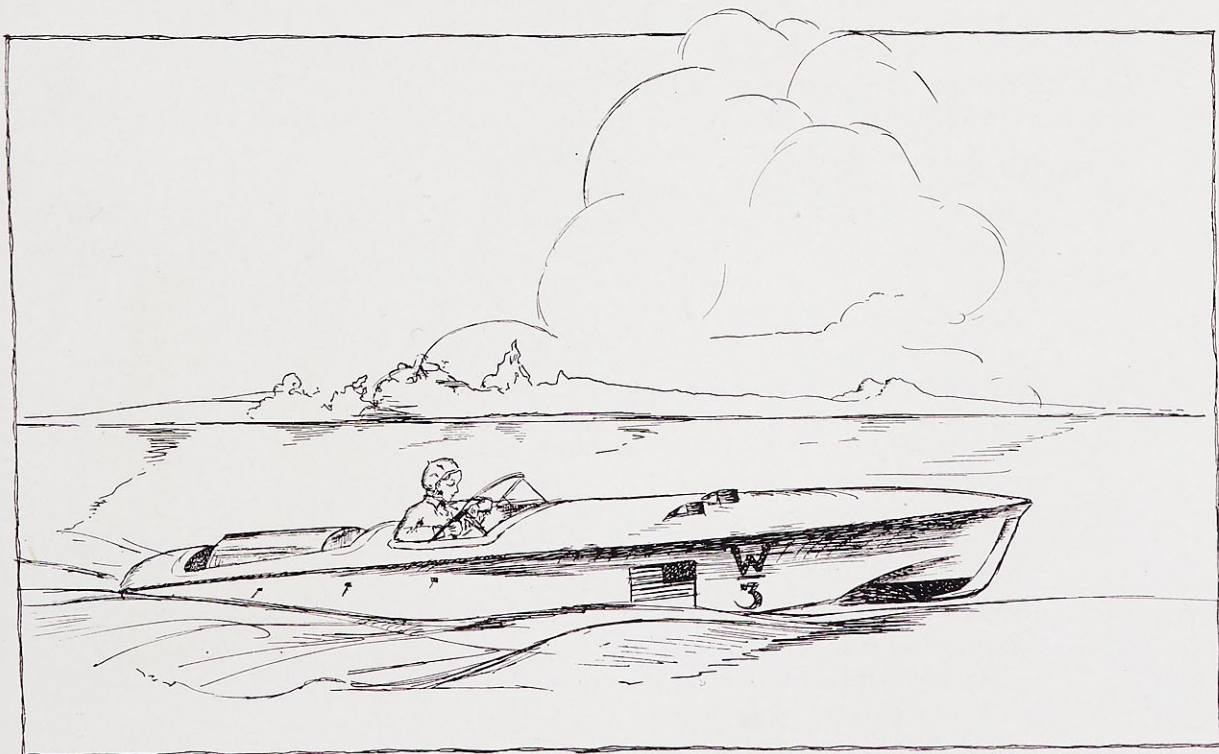
LUCILLE JOHNSON

Dorothy Royal of the Sophomore class represented Webster at the National Poetry Reading Festival at Northwestern University, March 25 and 26, and finished in the semi-finals. The contest is an annual activity in which professionals as well as amateurs take part. Skill in the reading and dramatic interpretation of poetry is the requisite for the contestants. Ann Russell Janes of the Junior class competed in the contest last year.

Lucille Johnson was presented in a recital the evening of April thirteenth. Her clever impersonations were enthusiastically received. Lucille is a member of the Junior class and is specializing in Dramatic Art.



Athletics





Volley Ball



The Victorious Sophomores

McGILL DELCOMMUNE FLORI WEBSTER SMITH TATE O'BRYAN

September, the incomparable Master of Ceremonies! September of the dual personality! For while he makes gentle, regretful adieux to Summer, he stands graciously majestic, supremely qualified to lend the flourish due to the beginning of the new school year.

Once more the corridors and classrooms ring and resound with scholastic activity. Once more the campus yields to the red and gold and russet brown. And soon the Athletic Year, not to be outdone by October's crackling leaves and decisive snapping twigs, swings 'round in full regalia, with Volley Ball.

Volley Ball! Traditionally the first sports activity of Webster College! Logically the magic whizzing ball that vivifies "Idle Hour". Naturally, the painless cure-all for school crabbitis. Glorious afternoons. Brisk energetic hours resounding with shouts and laughter and general good will. Pep and vim and incredible vigor send the balls flying high above the net from court to court, more swiftly than the eye can follow or the mind record.

And when Webster Collegians can boast sure and measured strokes; when their knowledge leaves little to be desired; there falls the scheduled, climactic "Tournament Night". On an evening early in November, "Idle Hour" offers the gratifying spectacle of Webster College, faculty and students turned out to a man, to watch and cheer, to root and shout—for Webster and for Volley Ball.

Enthusiasm runs high, but tension leaps higher. And even Autumn's veteran muscular zeal and accomplishment must bow to Volley Ball and to Webster.



CAPTAIN WEBSTER prepares to serve

Basketball



VARSIITY SQUAD

BROEKER, MERTZ, DALY, GOTTLÖB, HAYES, McBRIDE, MANGAN, WILDE, CASEY, HERMAN, WEBSTER,
KREUGER, BUSSMANN, MORIARITY

With the opening of the basketball season, Freshmen, Sophomores, Juniors, and Seniors—all came out for this popular game. The enthusiasm of the players mounted higher and higher as the season advanced to a climax in the inter-class tournament. The Seniors scored six victories. For the four years they have been at Webster, the present Senior team has not only won the tournament each year, but has never lost a single game on their schedule. Congratulations, Seniors!

Of course to make the Varsity is the ambition of every player. This year the big team, captained by Kay Bussmann, enjoyed a most successful season, winning all but one of the outside games. Our opponents were Harris Teachers' College, Maryville, Loretto Alumnae at Kansas City, and Kirkwood High in a pre-season game.

Because of the style and teamwork developed by Miss Barthel, the athletic coach, we have acquired a name of high rank in athletic circles.



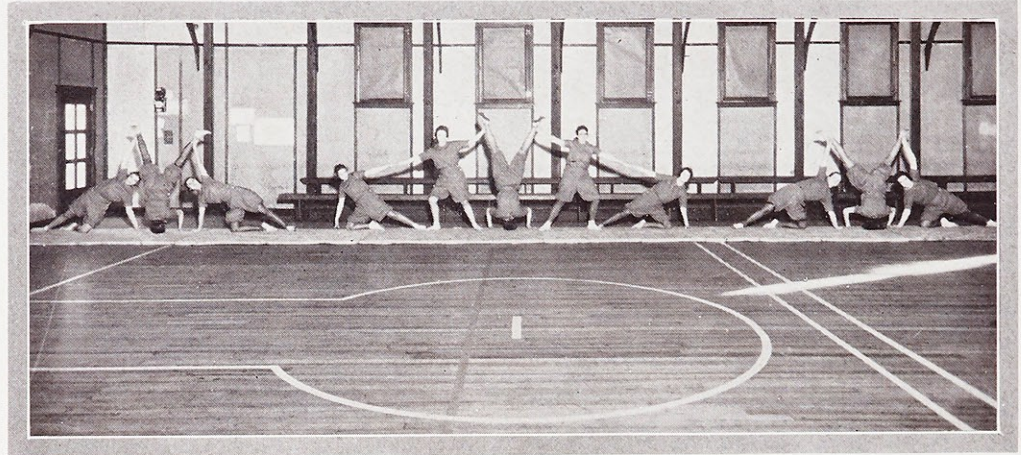
Kay was re-elected Captain for the 1932 Season

SCHEDULE

	Webster	Visitors
Feb. 17—Harris Teachers' College	37	3
Feb. 20—Loretto Alumnae (Kansas City)	16	22
Feb. 25—Kirkwood High (practice game)	34	9
Mar. 2—Maryville College	34	13
Mar. 9—Harris Teachers' College	27	14
Mar. 16—Maryville College	20	16



Stunts, Tumbling



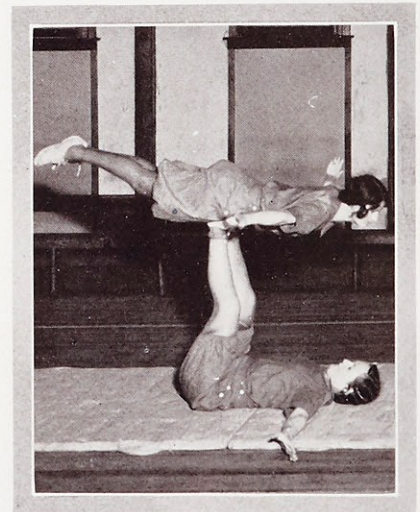
Head Stand Pyramid

A girl's first experience in tumbling usually comes when she is a small child and is tossed about in her dad's sure hands, and balanced on his shoulders, or turns somersaults on her bed or the living-room floor for the amusement of the company. As she grows older she competes with her brother or her fellow playmates.

Not until recently has much attention been given this play activity for girls in the physical education program. Now it is offered in grade schools, high schools, colleges, and universities; and there is an ever increasing interest which has firmly entrenched it in the year's schedule.

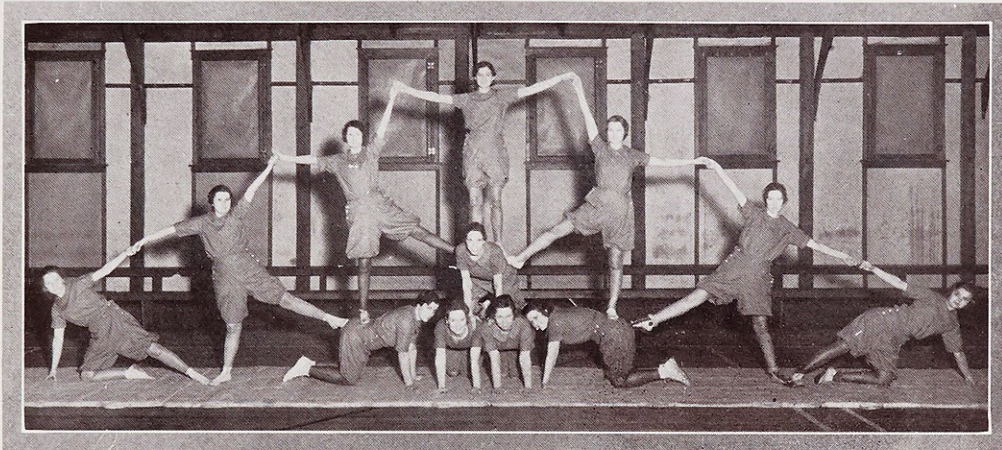
There is a vast amount of exercise to be had for each individual in a tumbling class. It makes for an all 'round development of the body, and emphasizes suppleness as well as strength. Tumbling rivals dancing in teaching control of the body. It is also an asset to corrective work. Though it is a muscular activity there is little strain connected with it, because individuals are working together.

It offers a strong appeal to every active girl because she takes pride in her accomplishments and there is a great amount of exhilaration and satisfaction in being a part of one of the many group activities. Quoting from B. D. Cotteral: "It develops courage and initiative, perseverance and self-respect. The first forward roll over two bodies requires a mustering of courage; the working out of individual stunts brings out initiative; and the patient try after try at the head stand is a training in perseverance. As the pupils are able to see improvement and success finally comes, they gain self-confidence, for to become master of this strange and yet familiar



A. RYAN
L. CASEY

and Pyramid Building



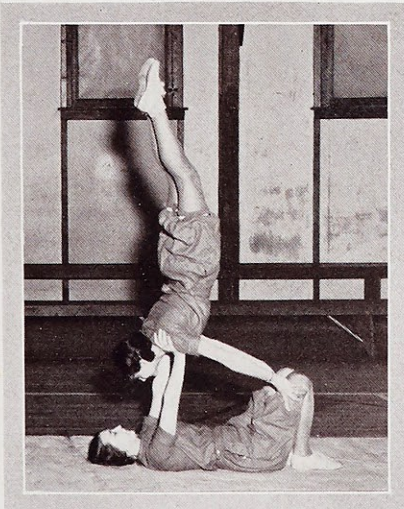
Fan Pyramid

physical self is an inspiring thing. It is humorous, also, to be able to turn a trick, like a forward roll, on one's unsuspecting spine. So happiness prevails in a tumbling class, happiness as a result of a spontaneous activity."

The addition to the Physical Education Program at Webster of the course in Tumbling, Stunts, and Pyramid Building has aroused great interest. It is offered for Juniors and Seniors and has been highly successful.

This year a demonstration was planned and given at half time during one of the class championship basketball games. It was well received by the audience and enjoyed thoroughly by the participants. The program consisted of individual and couple stunts and a selected number of pyramids.

The steadiness and agility of the girls were a revelation to those who had had no earlier opportunity of seeing them in action.



D. KRAFT
J. REIS

Head Stand Pyramid

Margaret Flynn	Kay Bussmann
Jo Reddin	Ann Ryan
Inga Block	Lillian Casey
Margaret Delmore	Dot Kraft
Jo Reis	Marie Walsh

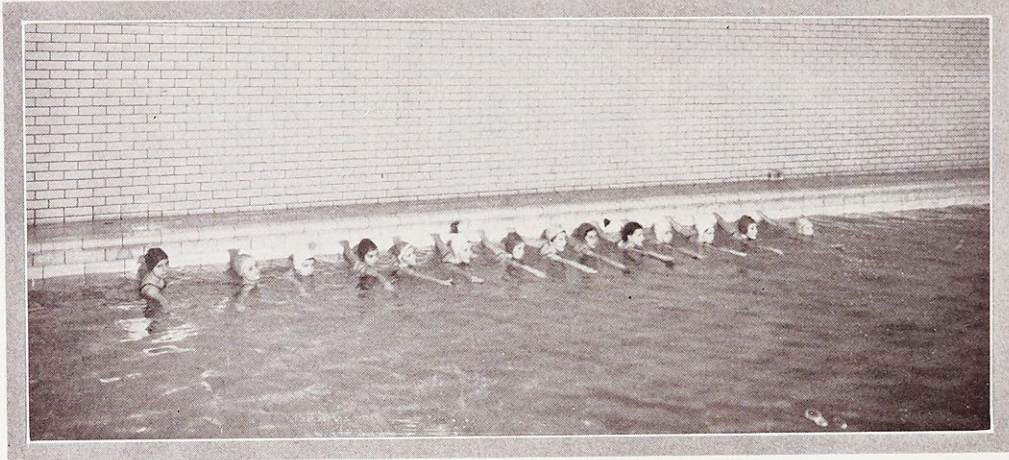
Audrey Klorer

Fan Pyramid

Inga Block	Elvira Krings
Mary Zilliken	Kay Bussmann
Ann Ryan	Lillian Casey
Dot Kraft	Florence Broeker
Jo Reis	Virginia Drummond
Helen Graves	Marie Walsh



Swimming and Skating



Ready for the signal!

ZILLIKEN, CUNNIFF, DRISCOLL, KRINGS, RICE, BONGNER, CAFFREY, KLOSER, CHAPMAN, HANGGE, O'NEIL, KRUEGER, SCHWARTZ.

Swimming and skating attained a remarkable degree of popularity this season, as was evidenced by the increasing number of participants in these sports. Besides the enjoyment they provide, they also point toward those much coveted athletic awards. There must be something of the mermaid in Websterites. For them there is a glorious exhilaration in cutting the water with long, clean strokes and in surging through the soft water. Miss Barthel made arrangements for Webster girls to enjoy swimming each week in the Y. W. C. A. pool at a time reserved especially for them. For a portion of the hour the instructor conducted a class in the technique of swimming and diving, and the remainder of the allotted time was spent in practicing what had been learned in class. The lessons in diving were particularly attractive.

King Winter did not hold so lavish a court this year. He neither bedecked the trees with frosty diamonds nor spread our lakes with glistening sheets of sparkling glass. (Perhaps the depression has affected him, too.) Nevertheless the thrill of ice-skating was not denied us. The Arena and the Winter Garden both maintained popular rinks. Sunday morning saw a goodly delegation from Webster College gliding, sliding, speeding and spilling. The southern girls especially found delight in this sport. Some of them had never been on skates before and their first attempts were quite ludicrous. But through their intense enthusiasm and earnest effort they rapidly improved.

It is the hope of the Webster Athletic Association that swimming and skating will continue to attract even a greater number of girls.



FLORI, BROEKER, WUERZ, HANGGE at the Winter Garden

Hiking and Golf



KRUEGER, O'NEIL, KELLY, CHAPMAN, CASEY, SKEES, ZILLIKEN, ZILLIKEN, TATE, O'BRYAN, DOYLE, KLORER, RICE, MOWREY, KRINGS, ALTMAN, SMITH

Doctors and Athletic instructors have adjudged walking one of the finest of exercises. Because walking is the principal activity in hiking and golf, these two sports are earnestly advocated by the Athletic Association of Webster College. Nor has their earnestness been in vain. Each year sees an increasing number of girls winning athletic points in these sports.

The officers of W. A. A. appoint hike leaders, under whose supervision all hikes are conducted. Twice a month these leaders set a time when the Websterites go a-walking. When the hours for departure arrive there is general pandemonium in the locker-room. Finally everyone is ready and the hike is on! After two hours they return, weary, foot-sore Collegians to rest two weeks before setting out again.

The microbe which gets in the blood of mortal man and makes him forgetful of family, home, and friends, oblivious of storm, rain, or wind, and unmindful of scorching sun, has infected Webster. We have golf fiends! The Juniors and Seniors especially indulge in this hit and miss, slice and chase game. On the South campus you can see them feverishly practicing putting and approach shots. The Westborough Country Club has made arrangements with our Dean of Women and the Athletic Instructor so that we may use the facilities of that course. It is the earnest desire of W. A. A. to provide a nine-hole course as soon as it is financially possible. As yet there are not sufficient numbers of enthusiasts to warrant holding a tournament, but if the present rate of growing interest in the game continues our golf tournament days are not far distant.



Mel leads off the foursome
KLORER BROWN CUMMINS SCHWARTZ



Baseball

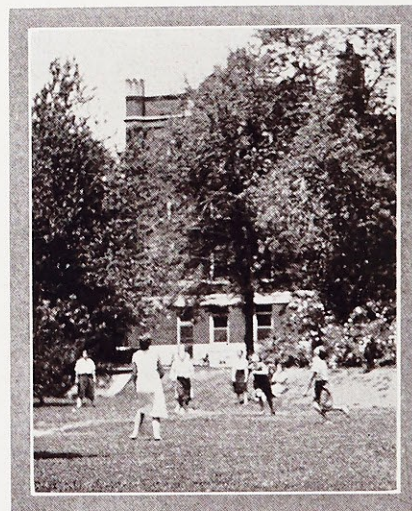


Junior Team—winners of the Class Championship, 1931
HENNESSY LEUER DALY BROEKER HOGAN (Cap't) HAYES CASEY DELMORE KRAFT

In the spring our athletes' fancy turns to thoughts of balls and bats. And why wouldn't Websterites be interested in that all-American game, especially since they have the world champions for their models. Truly the St. Louis Cardinals could find their feminine prototypes on Webster's diamond. Each class has its own team and each team is out to win the championship. Keenly contested games are staged between the rival teams and the battle is often a close one. The sun beaming down on the tired players is none the less kind to the eager, cheering crowd who vociferously urge the players on to "third, home and safe".

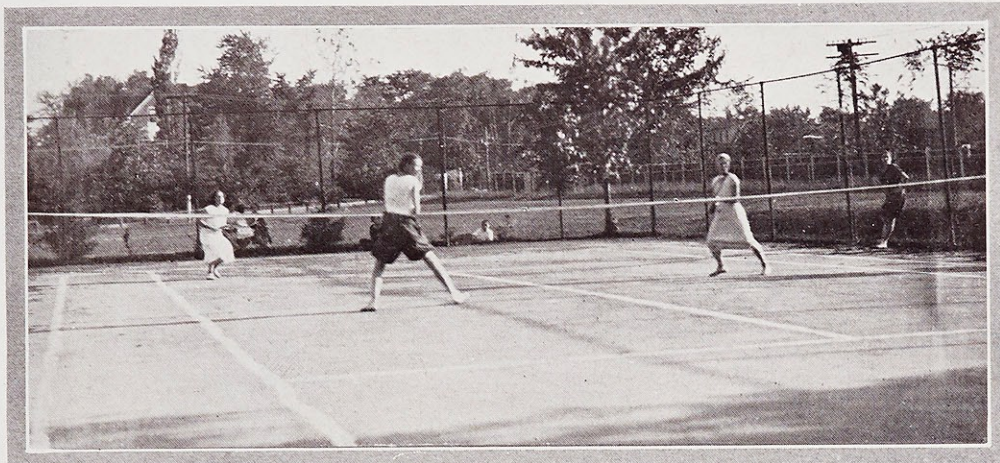
Baseball practice starts immediately after the close of the basketball season. The victorious class in that tourney is spurred on by their laurels to cap the basketball trophy. The other classes are equally eager to win this championship, and their defeat in the previous tournament makes them all the more determined to reach the goal in baseball. The south campus is dotted with brown gym suits as fielders, attempting to follow Frisch's and Wilson's technique, get their spring workouts. Efforts to attain the speed and daring found in "Pepper" Martin are repeatedly made, though not with all the success of their famous example. Each class practices untiringly under the well-regulated direction of the coach, Miss Barthel and their respective captains.

Last year the Sophomore team won the championship in baseball when they defeated the Seniors of '31. Captain Marg Ludden (Senior) and her stoical teammates are to be commended for their fine sportsmanship.



The Final Game of the Season

Tennis



Ann Ryan and Marion Hangge display the technique which won the doubles tournament

"An ace!" cries an interested spectator as one of our tennis champions serves her ball. A speedy game ensues, full of action; technical terms float through the air; the great outdoor sport of Webster is in full swing.

As soon as balmy, sunny days visit us, the path between the residence hall and the tennis court is dotted with players and spectators going to and fro. Every one is interested in the game. Always the court is chartered hours ahead of time. The noon hour is especially popular and all too short.

Early in May the enthusiastic players ask in an eager, intense way, "Have you entered the tournament?" "Did you sign up yet?" The entry blanks are prominently displayed on the Athletic Bulletin Board and names are entered for the singles or doubles, or sometimes for both. A time limit is set in which all the preliminaries are played off. Good sportsmanship is the keynote of the contestants. On Field Day the climax of the tennis season at Webster is reached when the finals are held. The matches are the center of interest and last year were brought to an uproarious close as Dot Kraft was once more hailed as champion!



DOT KRAFT and her trophy

TOURNAMENT 1931

Singles

Winner of Tournament.....	DOROTHY KRAFT
Runner-up.....	MARION HANGGE
Semi-finalists.....	{ JO REDDIN
	{ GRACE O'BRYAN
Quarter-finalist.....	INGA BLOCK

Doubles

Winner of Tournament.....	{ MARION HANGGE
	{ ANN RYAN
Runner-up.....	{ KATHRYN BUSSMANN
	{ INGA BLOCK
Semi-finalists.....	{ FLORENCE BROEKER
	{ ELVIRA KRINGS
	{ MARY CASEY
	{ LILLIAN CASEY



Field Day

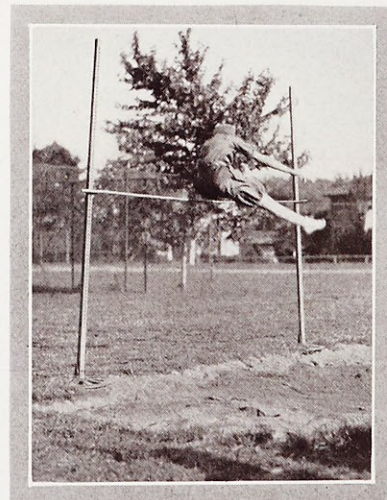


Finish of the 75-yard dash

KLOBER, BUSSMANN, BROEKER, MURPHY, O'BRYAN

Field Day at Webster, the day of the annual track and field meet, and the Athletic Banquet, is a successful collegiate effort to persuade Time to "turn backward" in his relentless flight. On that day enterprising young maidens doff mortar-board and collegiate gown for battered gym suits. And then they run, leap, jump, and throw to their hearts' content, while the spectators get just as much exercise, even though it is confined to their vocal cords. The victorious athletes are rewarded with shining ribbons and gleaming silver cups, which are just as eagerly coveted as was ever an Olympic crown of laurel. The onlookers grin just as widely as if they, too, had been rewarded. Who knows? Perhaps they have. Refreshments are always a boon.

Something in the air on Field Day seems to inspire one and to bring out all her latent enthusiasms. Class spirit runs high, and every one cheers lustily for her doughty fellow classmate who is sweating her way to victory. Little groups of excited spectators ingeniously contract themselves so that they may hedge in the sand-pits, and just as ingeniously extend themselves to line the campus for the races. Last year the Sophomores were the meet winners with a total of thirty-three points. Dot Kraft and Flossie Broeker came through for them with winning high-jump of four feet, seven inches, and Dot repeated with a standing broad jump of seven feet, eight and a half inches. However, the Juniors, not to be outdone, can still point with pride to their record. Kay Bussmann won the silver loving cup awarded to the highest individual scorer. Her best victories were in the dashes



FLORENCE BROEKER Clears the Stick with
55 Inches

Field Day



Marjorie Jackson winds up for the baseball throw—178 feet 8 inches

and basketball throws. In the finals of the tennis tournament, which were held after the close of the track meet, the Seniors continued their winning streak, begun earlier in the day when they won the baseball championship; Ann Ryan of their class paired with Marian Hangge, a Sophomore, to win the doubles. Dot Kraft won the singles tournament. The poor Freshies, downtrodden as they were, and by dint of repeated trips to Westborough, finally rounded up enough for a relay team and won!

The day closes, as all good Webster days should, with food, in this case the Athletic Banquet. Everyone attends attired in her best bib and tucker, and smiles graciously, although she is apt to be a bit touchy about the sunburn acquired during the day. Everyone eats heartily, diets to the contrary notwithstanding, and cheers lustily as the letters are awarded. All Athletic awards for the year in volleyball, basketball, baseball, track and tennis, are given at this banquet, along with all letters of recognition gained through athletic points. Finally all rise to sing Alma Mater and watch another Field Day drift into history.



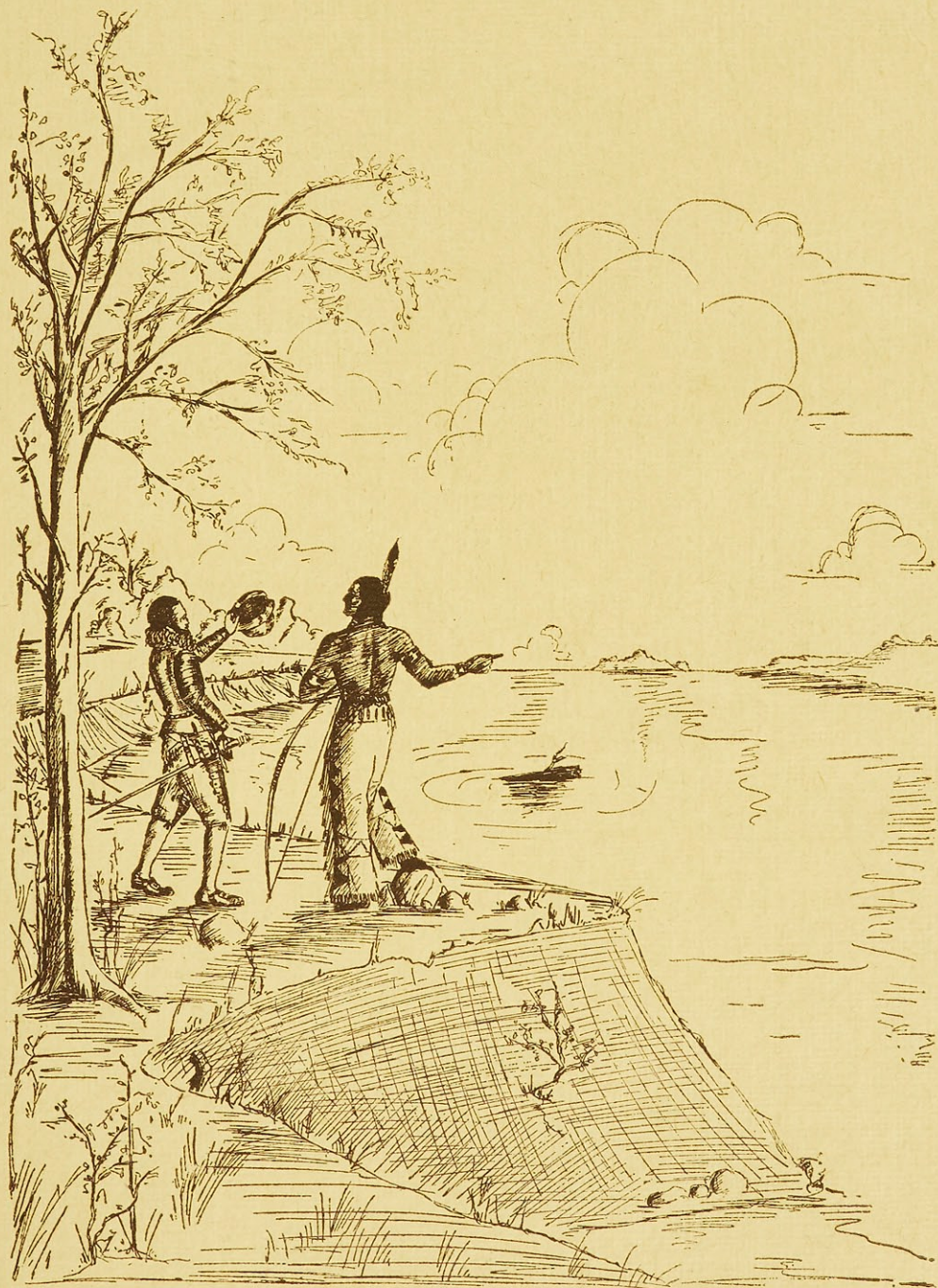
KATHRYN BUSSMANN
Winner of Track Meet—20 points

It is just such days as Field Day that make College life the memorably exhilarating thing it is. The glorious freedom of release from books, the surge of youth in body and limb, the thrill of competition, the fine spirit of good-fellowship and gay banter—all are factors in the supreme enjoyment of Field Day. Of course, to our most proficient athletes it has a deeper significance. To them it is naught less than the Day of Judgment.

Memphis

The realization of the valor and hardihood of pioneers who persist in advancing through the wilderness in face of furious opposition always arouses most profound admiration. But words cannot express what should be said of the loyalty, fortitude, and courage of the unfaltering De Soto and his invincible army. After four months of fierce struggle they came upon the Mississippi River, men bowed down and numb to the soul with anguish. Their gayly-sashed doublets of taffeta had long since been replaced by skins of wild animals, now bald with wear. Their armor was rusty and dented. When they viewed the Great River from the heights of the Fourth Chickasaw Bluff, the site of the present city of Memphis, they saw but a dirty giant sprawling into bayou and morass, another obstacle to be encountered and surmounted. They could not appreciate their achievement.

Feature



Foreword

"Webster" is an old Anglo-Saxon term meaning "a weaver". In the Feature Section we present eight girls who have woven the most brilliant threads into the exquisite tapestry of College Life at Webster in the year of Nineteen Hundred and Thirty-two.

The staff feels that the student body deserves some explanation for the unusual method of selecting the girls for this section. Undoubtedly all will not approve, but we did that which is in our opinion, the wisest thing. Whatever your conclusion, know that we were guided by only the finest motives.

Experience would seem to teach that a small group can more expediently discuss and decide a question than can a large assembly. Accordingly, we determined that the Lauretanum staff and the officers of the Junior Class (which is responsible for the book) in the presence of the faculty advisor, Sister M. Borgia, should propose and elect the representatives for the Feature Section.

Each girl is in honor bound not to reveal anything that happened in any of the meetings.

Every nomination was thoroughly considered in the light of Webster ideals and service to the College in a particular field. It was no easy matter to select as outstanding, a mere eight from the splendid womanhood of Webster. However, every girl that has been chosen for the Feature Section has received in one way or another some recognition of her service from the student body. Hence we feel that ultimately she is also your choice.

We present the websters of Webster College Ideals, Catholic Action, Science, Literature, Athletics, Dramatic Art, Business, and Social Life.



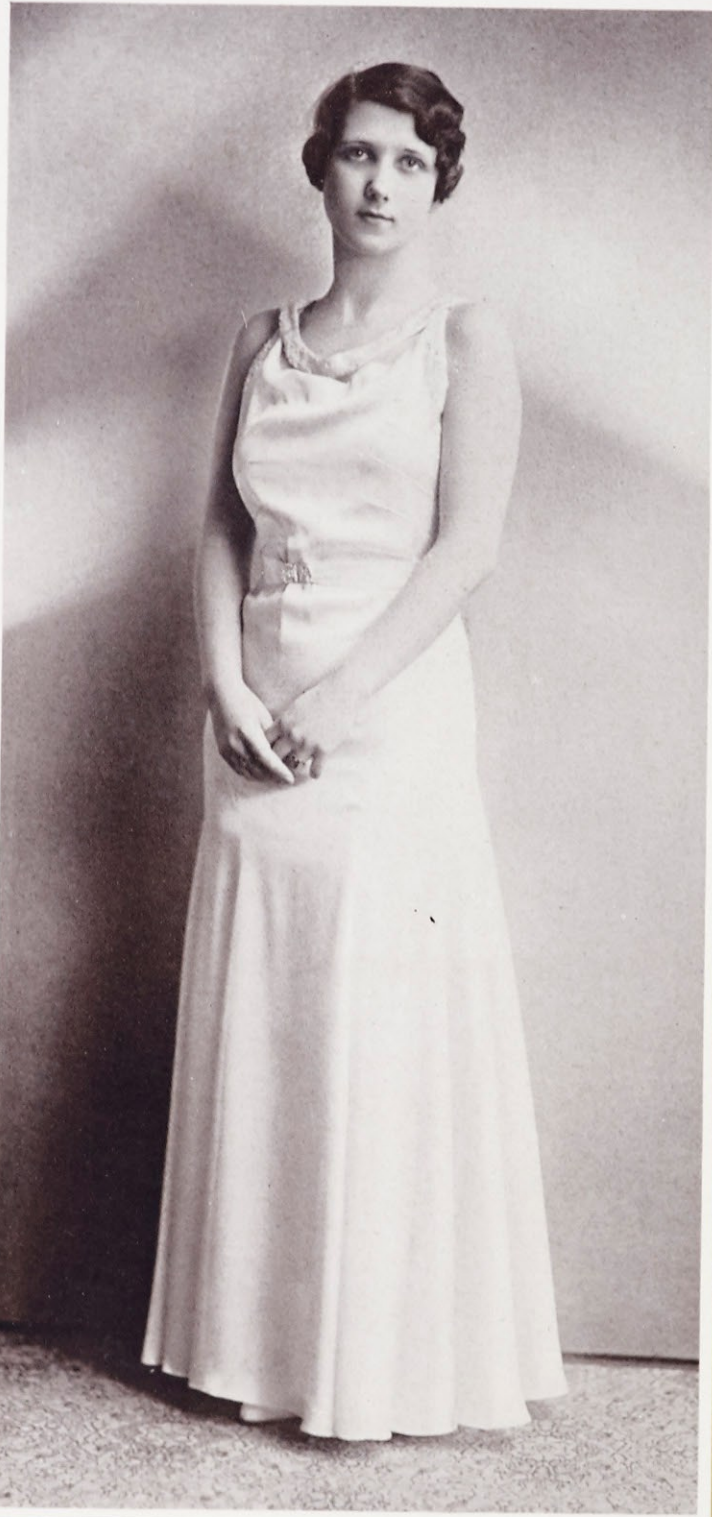
*Webster
Ideals*

Dorothea Shuford

*Catholic
Action*



Virginia Drummond



Science

Helen Leuer

Literature



Genevieve McBride

Page One Hundred Nineteen



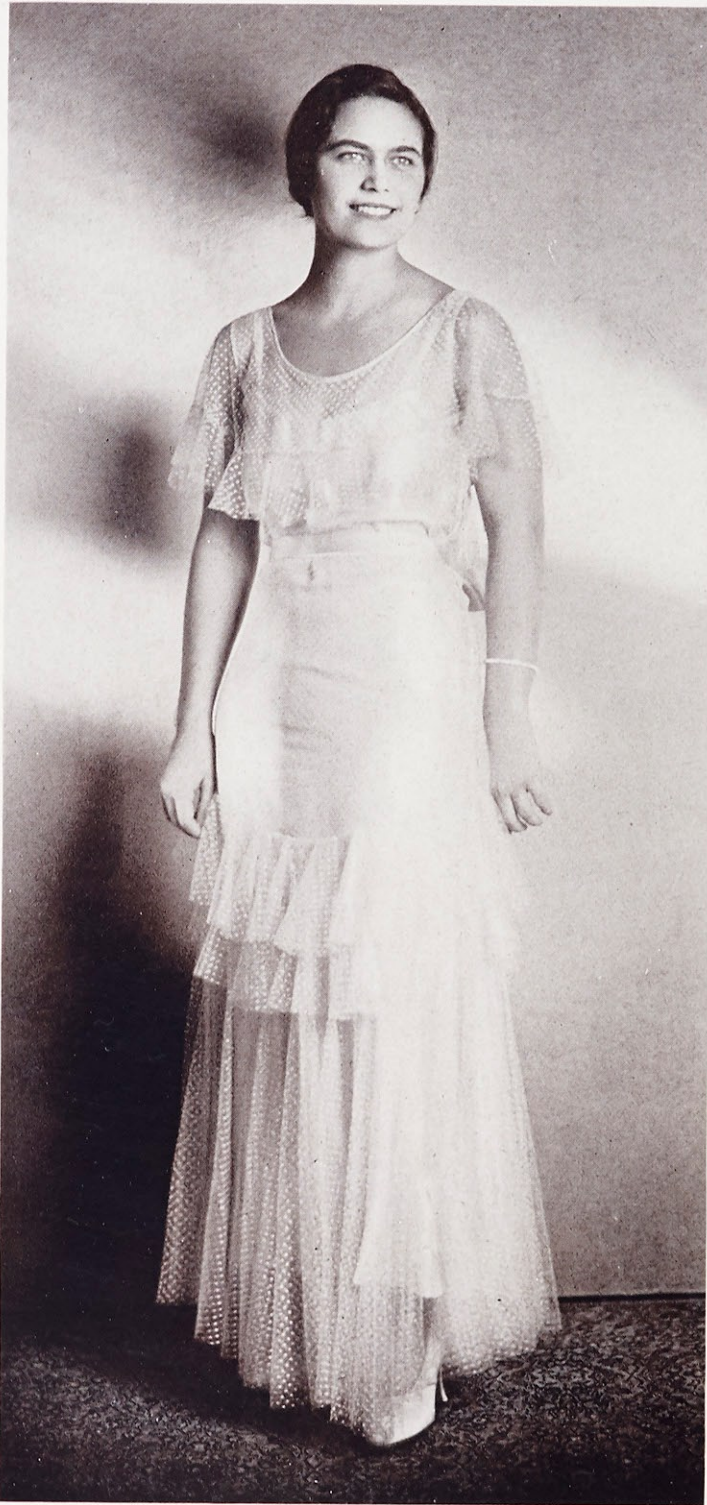
Athletics

Kathryn Bussmann

*Dramatic
Art*



Lucille Johnson



Business

Jane Daly

Social Life



Margaret Delmore



.. Snaps ..





Snaps

Vodvil 1932



Prologue

Aw, Nertz!

Wooden Soldiers

Tap Solo

Kid Act

Radio Skit

Rush-in Orchestra

Viva la Tamale!

Plantation Crooners

Moonlight Waltzers

Depression Chorus

Snaps



Wouldst think they were
nearing graduation?

Rah-rah girls



Leaf us be!

Dignified Seniors???



Cute, "isn't it?"

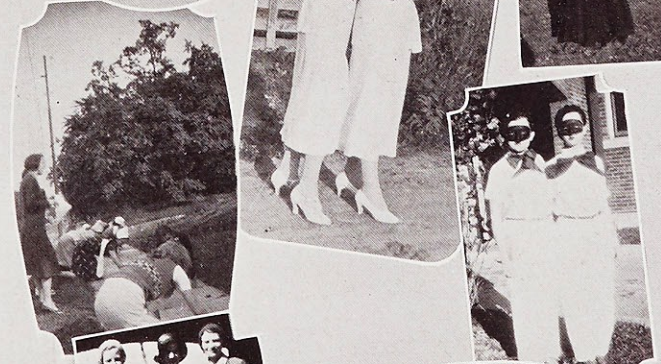
16 hours (two-thirds
of the Days)

A bit of the cold
shoulder



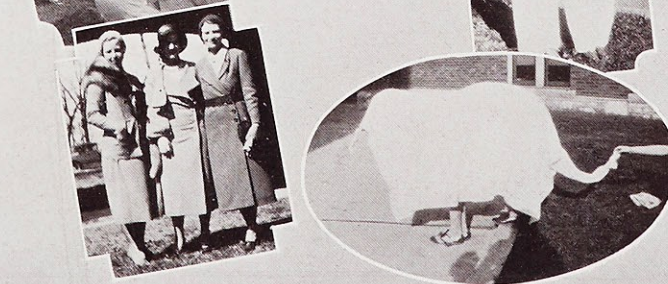
Initiation—"Bend
down, sister"

Hallowe'en



Triumvirate of the east

Freshmen—or
elephant?





Snaps



"In your merry Oldsmobile"

Apologies to Mr. Ziegfeld

Kansas City Kitty at the parting of the ways

Strolling—just strolling

Oh, these collitch goils!

Two jolly Sophomores a-sittin' on the steps

Trouble?

Some play golf—

And others do not

Faded summer leaves

Sisters of the Skillet

Victims of Logic (Problem children—they think they are Ben Hurs)

Snaps



Waiting for her
Charlie-boy

En route to K. C.

Coy—very

Happy birthday
to you!

Madame Queen

“Who’s Who?”

Remember us to
“Birmingham” Joe

Rosie O’Grady

“Calf”

Baby Show

They’re so happy!



The Gulf

LaSalle landed a short distance above the mouth of the river and raised a column bearing the arms of France. In a loud voice he proclaimed the Louisiana country the property of Louis XIV. Shouts of "Vive le Roi" and volleys of musketry responded to his words while he planted a cross beside the column. That day the realm of France received a stupendous accession—a region of savannas and forests, sun-cracked deserts and grassy prairies watered by a thousand rivers—all by virtue of a feeble human voice inaudible at half a mile's distance.

As LaSalle and his companions had drifted down the turbid current between low and marshy shores, the brackish water which had traveled many miles from its cool northern lake, changed to brine and the breeze grew fragrant with the tang of the sea. Then the broad bosom of the great Gulf opened to sight, tossing its restless billows, limitless, voiceless, and the mighty river was lost in the greater might of the vast ocean.

Campus



College Life

A review of the social activities of a Webster year shows the eminent fitness of each for its circumstance. From the various functions every girl may choose her favorite. Among the dances the Senior Prom, a formal dinner-dance, is probably the most popular, but some prefer the joyousness of the Spring informal or the Fall dance. Besides these there are delightful Sunday evening informal dances. Two most important events are the Faculty reception in the Fall and the High School tea in the Spring. But for those who prefer parties of an informal nature there are the Hallowe'en masquerade, Christmas party, with a present for every freshman, and Spring day. The latter is an occasion which all the students and all the faculty enjoy in picnicking together. But picnic suppers in the garden at Nerinx Hall are frequent in the golden days of fall and the lazy days of springtime. May is the fullest social calendar of the curriculum. The Seniors are kept busy with the many entertainments given in their honor, including teas, luncheons and bridge parties and perhaps a treasure hunt. Besides there is the Crowning of Mary as the true and eternal queen of May. This beautiful ceremony is performed in an open-air court. Then, too, a queen is chosen from the students to preside in a May Day celebration. Graciously she is seated in her throne and watches graceful dances on the campus green as they wind the May pole. Such are the outstanding social activities, but each month brings its own particular entertainments, among these the monthly social dinner. In December and June it is replaced by banquets attended by the whole of the student body.



May Day



The Queen and her Court of Beauty

There is something that borders on the esthetic about May Day at Webster College. Nearly always Nature favors us kindly. A beautiful day in May is something inspirational in itself. Added to this is a lovely queen on her throne graciously smiling to her daintily garbed maids and the new queen approaching in becoming dignity her seat of honor and you have a picture marvelous to behold.

Last year Nature was particularly benevolent. The lovely day was radiant with sunny skies of azure hue. On the south campus a white trellis entwined with climbing roses formed the background for the Queen's throne. To the left of this picturesque setting was the May pole around which a rainbow seemed to form as the streamers swayed in the gentle breeze.

Soon after the Loretto Foundation Ceremony was over, the crowd had gathered along the terrace near the throne. All were seeking a point of vantage for they did not want to miss any of the scene that was to follow.

It was not long before a dainty bugler in white approached the throne and announced the arrival of the Queen. Applause rang through the air as Adelaide Murphy, beautifully gowned in white, moved slowly toward her chair of state. One by one the maids were announced; each made her way to the throne, courtesied and took her place on one side of the Queen who smiled upon her lovely maids. It was truly a beautiful sight.

The pretty pastel gowns of the maids were fashioned of dainty nets and chiffons made in the long flowing style of the day. They formed a semi-circle around the dais, and then after the last maid was in her place, the bugler stepped



DOROTHEA SHUFORD,
The Queen of May

May Day



The May Pole Dancers curtsy to Her Majesty

forward to announce the new Queen. There was a moment of tense expectation, silence, and then a burst of applause as a charming girl stepped into the picture. Miss Shuford walked in stately grace down the canopy-covered lawn to receive from Miss Murphy the crown that acclaimed her the Queen of Love and Beauty.

Then as a befitting close to the climax of the day, special entertainment was provided for the Queen. The May-pole dancers, who had stood on either side of the walk as guards, took their places around the May pole. To the strains of distant music they twirled gracefully in and out, around the pole.

After the Queen and her court had been feted, they retired as the beautiful colors of our own May Day were being transferred to the western sky where the kindly sun was sinking slowly to rest.

THE COURT OF MAY, 1931



ADELAIDE MURPHY,
The Retiring Queen

DOROTHEA SHUFORD	<i>Queen of May</i>
ADELAIDE MURPHY	<i>Retiring Queen</i>
THERESA SHEA	<i>Former Queen</i>
GERTRUDE JOLLY	<i>Former Queen</i>
MARGARET VOLLET HOGAN	<i>Former Queen</i>
ANN RYAN	<i>Senior Maid</i>
HELEN O'BRIEN	<i>Senior Maid</i>
KATHLEEN HAMEL	<i>Senior Maid</i>
ELLEN PRENDERGAST	<i>Junior Maid</i>
MARY HICKMAN	<i>Junior Maid</i>
JANE DALY	<i>Sophomore Maid</i>
AUDREY KLORER	<i>Sophomore Maid</i>
MARY ELIZABETH GRIFFIN	<i>Freshman Maid</i>
LUCILLE JOHNSON	<i>Page</i>



Sodality May Day



The Prefect, Bernice Wolff, crowns Our Lady's Statue

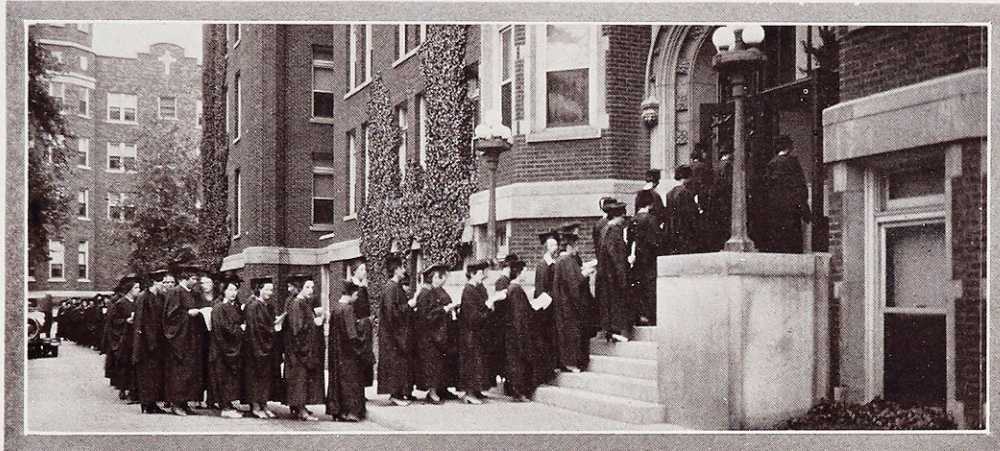
The zenith of each sodalist's devotion for our Blessed Mother is reached late in May, that most joyous and beautiful of months, especially dedicated to her. Out of the fullness of their fervent, young love, as Children of Mary, the students of Webster College then crown her their Queen. The entire student body in cap and gown gathers in the lower assembly of the Administration Building to form the ranks of solemn procession; then files from the east exit of the building around the chapel and across the campus, singing hymns to Our Lady. Proceeding to the ambulatory each girl kneels at the shrine of our Blessed Mother, at whose feet she lays a white rose-bud, a symbol of the maiden soul entrusted to the tender keeping of the Blessed Virgin.

In the soft hush of the May afternoon earnest hearts renew their allegiance in the Solemn Act of Consecration. Then the Prefect, who has done so much to make the Sodality a vital, potent factor in the lives of each of the Sodalists, removes the Sodality Medal from her neck and relinquishes it to her successor, the Prefect for the on-coming year. The new Prefect takes her vow to guide as best she can, the Sodality of Our Lady at Webster College. She begs that she be not left without guidance and divine aid; that her mean human efforts bring fruition in grace in the souls of the Sodalists. After the installation of the new Prefect the procession, headed by the old and the new Prefect, followed by the members of the Student Spiritual Council, again marches across the campus, singing hymns of praise to Our Lady. Slowly and reverently it files up the steps to the Chapel where the students, Sisters, and friends of the college kneel for



The installation of the new Prefect,
Virginia Drummond

Sodality May Day



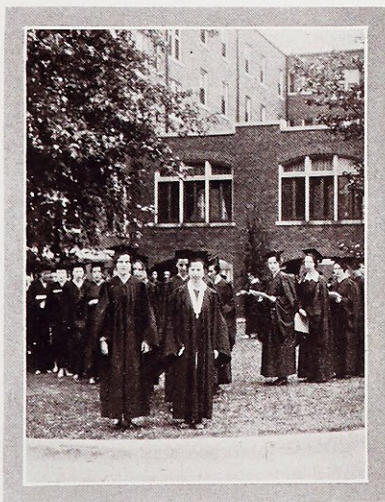
The procession to the Chapel for Benediction

Solemn Benediction, at which Our Lord smiling at the loving tribute to His Mother, folds these Children of Mary close to His heart and tenderly blesses them. Surely He will not withhold His Divine protection from the Sodality, but will make it ever a holier and more efficient organization of Active Catholicity.

This fitting display of homage to the Blessed Virgin is an actual expression of what the Sodality means to every college girl. It is assuredly the most important organization in the school, its Prefect holds a major office, equal in rank to that of the President of the Student Association. The Sodality is unique in that in making a success of an activity it reaps a threefold benefit by reason of its laboring for God, for the College as a unit, and for the individual Sodalist.

The efficiency and facility of operation of the Sodality discourages an appreciation of its real worth. In far too many cases its value is accepted with little consideration or thought of the long hours of feverish planning and hard work spent by the officers of the Sodality. The splendid talent that produces vivid, attractive, artistic bulletin boards is too often taken for granted. Perhaps it will always be so—our Faith, family and friends, we will not appreciate until by some stroke of the Hand of God they are taken from us and the genuineness of their merit is sadly, finally evidenced by their absence.

Happily at Webster, there is an ever-growing realization of the worth of our Sodality. This realization manifests itself in splendid attendance at meetings, hearty co-operation in all fields of Sodality endeavor and ardent enthusiasm for our Lady, patroness of Sodalists.



The retiring Prefect and the new Prefect lead the procession



Dances



The Mardi Gras Costume Ball

On Friday night, May 22, the Rose Room of Loretto Hall was the scene of a gay assembly of Freshmen and Sophomores and their escorts, with chaperons, and a large "stag line". The night for the Spring Dance had arrived. Everyone had been looking forward to this occasion as the happiest of the year and none were disappointed. The girls were gowned in airy creations of lace, chiffon, and organdy in lovely pastel shades. All were sorry when the hour for parting came. The evening of May twenty-ninth the Rose Room was again decorated, this time the Junior-Senior Spring Dance. To the strains of soft music, the floor filled with another joyous group of collegians. The evening passed too rapidly. The new idea of having a dance at school had met with the approval of all.

In the Tower Room of the Congress Hotel the usual Fall Dance was held Wednesday, November 4, with all four classes well represented. It was informal in tone. Rich velvets in various hues predominated, with silk crepes in deep colors ranking next in preference, while many entirely individual costumes drew attention.

Besides their own frolics the girls have enjoyed the various dances given by St. Louis University of which Webster is a corporate college. The contest for the best costumes at the Mardi Gras Ball saw several Webster girls competing in the finals.

The success of the various dances has been due largely to the ability of the dance chairmen, Grace Strecker, president of the Senior Class; Dorothea Shuford, president of the Student Council; Eleanor Carroll, president of the Sophomore Class; and Justina Hayes, president of the Junior Class.



DANCE CHAIRMEN
STRECKER, Prom; SHUFORD, Fall Dance
CARROLL, HAYES, Spring Formals

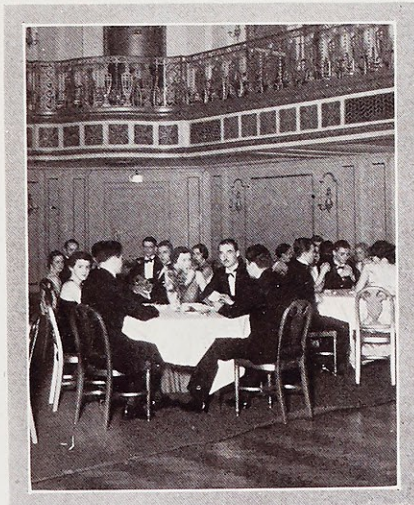
Senior Prom



A few of the Prom guests in the Gold Room at the Jefferson Hotel

Not so many years ago we were Freshmen, timidly setting forth on a College career of our own. Prom! we thought. Ah! the importance of the event. With utmost care we selected our gowns, accessories, and partners. The night of nights arrived. Every detail had been brought to perfect completion for the sensational entrance. Then our hearts leaped to our mouths and we wondered! Modestly and quietly we spent our evening living more within ourselves than without, but the evening was a success and Prom number one became a pleasant memory.

We have evolved into nonchalant Sophomores. Indifferent to life in general and Proms in particular, we note the sign "Prom" with a casual glance, and even more casually we make our last-minute preparations; keep our dates waiting, and wander aimlessly at a late hour into the ballroom. Secretly we have a marvelous evening, but we are apparently the bored sophisticates, and love it!



A Senior table

We are Juniors, and as Juniors, have much to uphold. Our Prom is something to think about. We must go, be on time, speak to chaperons in our most lady-like manner, because we feel that it is up to us to make the evening that lovely success the Faculty and Seniors wish. We look perfect, we are perfect, and we have a perfect time.

The next Prom is our last. We're Seniors and hostesses. We slave to make everything superb, and only when the first strains of the orchestra resound through the salon do we rest. The remainder of the evening is filled with that sweet sadness that comes with doing things we love to do for the last time.



Banquets



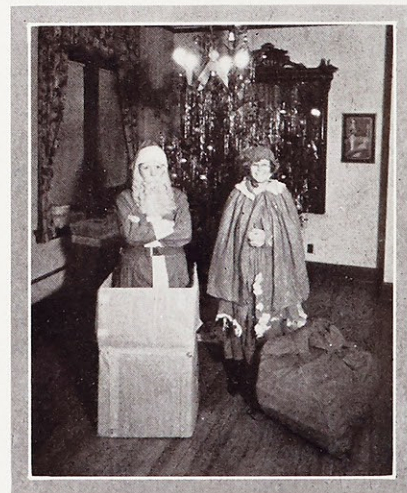
The Christmas Banquet

To civilized man sitting together at table has always betokened good fellowship and love. Thrice a year Webster College sits down to the banquet table. What a host of beautiful memories is suggested by the mention of our Webster Banquets!

The Christmas Banquet is a gift from Reverend Mother. It was an unusually festive occasion this year because it marked the celebration of the Silver Jubilee of our Chaplain. The scintillating silver and Christmas red of the decorations were very attractive. Gay toasts were offered to our Reverend Jubilarian and to other members of the Faculty. Our President, Dr. Donovan, made the Seniors very happy by presenting them with their coveted Class Pins. After the banquet, the guests repaired to the Pink Room where the Juniors entertained with a Christmas Party. Jolly old Santa and Mary Christmas distributed gifts to the Faculty and to our baby sisters, the Freshmen.

The Athletic Banquet is always exciting. It is the climax of Field Day. After a luscious meal heartily appreciated by the stalwart athletes, the achievements of the Athletic Year are acknowledged. The stars of the Volley Ball, Basketball, Baseball, Track and Tennis are presented with trophies, and the class winning the greatest number of points for the year is presented with a silver plaque. Toasts, speeches, cheers, smiles, and applause are the order of the hour and then—off to bed very tired and very happy.

Mingled with the gaiety of the June Banquet there is the tinge of sadness. The Seniors are loath to end this last Webster Banquet. Then the happy thought—Webster is our home and we are ever welcome at the cherished banquets.



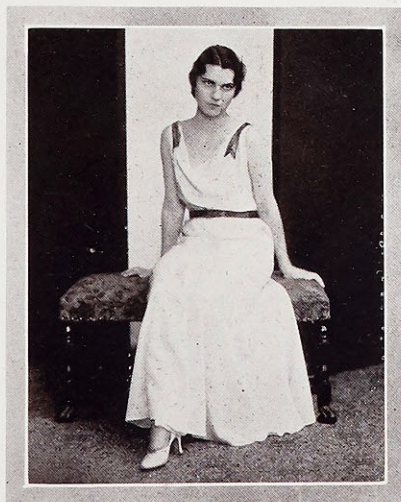
Santa Claus and Mary Christmas, with their pack of gifts

St. Louis University Prom



The 1932 Billiken Prom Queen, her maids of honor and their escorts

The St. Louis University Promenade, the climax of the University social season, took place the evening of March twenty-ninth. Nearly a thousand loyal subjects were present to view the elaborate coronation ceremony of the Billiken Queen. A deep suspense and anxious expectancy pervaded the audience as the dancers awaited the time of the grand promenade. At eleven-thirty o'clock, as vari-colored floodlights were played on the royal throne at one end of the University gymnasium there sounded a fanfare of trumpets, announcing to the hundreds of couples that the grand promenade was at hand. They took seats in the balcony while the Queen and the maids of honor were escorted by conclave men across the ballroom, colored lights following their steps. In the royal retinue was Miss Grace Strecker, representing Webster College. After last year's Queen and the nine maids representing



GRACE STRECKER
Webster's Prom Maid

the corporate colleges and the schools of the University had proceeded to the raised throne, the new Queen, Miss Elizabeth Wooley, a Maryville College Student, representing the Commerce and Finance School, on the arm of Lawrence Neville, the Chairman of the Prom, advanced majestically to the throne. She was greeted enthusiastically by the assemblage. The crown was removed from the head of Miss Mary Elizabeth Costigan, Queen of the 1931 Prom, and placed upon the head of Miss Wooley. At the conclusion of the coronation ceremonies dancing was resumed to the lovely music of Henry Busse. The favors were pretty silver bracelets. An extra edition of the University News added much to the gaiety of the occasion. A large number of Webster girls were present and acclaimed it a very successful prom.



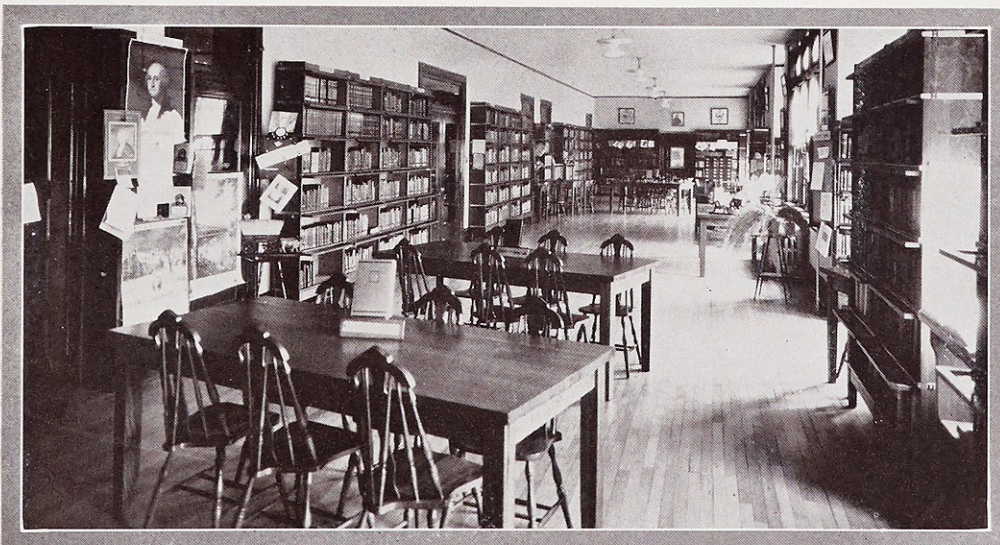
In Appreciation



The Librarian's Desk

The Lauretanum Staff wishes to acknowledge to our College Librarian the deep gratitude we feel for her very kind assistance by placing every facility of the Library at our disposal in our research for historical and geographical data. Especially are we appreciative of her lending us the facsimile of Father Marquette's own map from which the Art Editor drew the "Ex Libris". Sister's active interest and desire to make the Library of vital service has made that department the important factor it is. No effort has been spared to make it modern, well equipped, and interesting. The Library has been

entirely refurnished—and very artistically. Notable is the series of beautiful plaques which line the upper wall. Interest has been stimulated by publishing monthly book lists giving brief reviews of the best works and by introducing the monthly Library Hour. An urgent book drive resulted in the addition of several thousand volumes. The clever bulletin board keeps the student informed of the latest trends of literature. Because of the pleasure the Library affords us and because of her kind aid we express our gratitude to the Librarian.



The library, a quiet sanctum for study and research

Patrons

Very Rev. W. P. Barr, C. M.
 Very Rev. C. L. Souvay, C. M.
 Rev. J. P. Donovan, C. M.
 Rev. L. J. Fallon, C. M.
 Rev. M. A. Feltz, C. M.
 Rev. L. P. Foley, C. M.
 Rev. M. J. O'Connell, C. M.
 Rev. J. P. O'Malley, C. M.
 Rev. M. J. O'Malley, C. M.
 Rev. T. F. Schmucker, C. M.
 Rev. J. P. Fagen, C. S. S. R.
 Reverend Mother Edwarda
 Dr. G. F. Donovan
 Mr. and Mrs. C. F. Krings
 Mr. and Mrs. R. E. Hennessy
 Mr. and Mrs. Leonard Perez
 Mr. and Mrs. John A. Burke
 Mr. and Mrs. Al P. Daly
 Mr. and Mrs. J. L. Corley
 Mr. and Mrs. Geo. L. Schumuker
 Mr. and Mrs. A. J. Klorer
 Mr. and Mrs. H. A. Bridges
 Mrs. George H. Broecker
 Mr. and Mrs. A. Hangge
 Mr. and Mrs. W. D. Moore
 Mr. and Mrs. J. Delmore
 Mrs. L. W. Hellrung
 Mr. and Mrs. W. N. O'Bryan
 Mr. B. E. Tate
 Mr. and Mrs. J. D. Augustus
 Mr. and Mrs. J. A. Smith
 Mr. and Mrs. P. J. Keeley
 Mr. and Mrs. J. A. Crane
 Mr. and Mrs. Jacob R. Burtle
 Mr. and Mrs. J. E. Schmuke
 Mr. D. J. Rielley
 Mr. F. T. Golden
 Mr. and Mrs. T. J. McCarthy
 Mr. and Mrs. T. Shaughnessy
 Mrs. J. A. Mourey
 Miss Mary McDermott
 Miss Louise Hayes
 Miss Kate Carroll
 Mr. and Mrs. Chas. L. DelCommune
 Mrs. John E. Royal
 Mr. and Mrs. Lee L. Daly
 Mr. Walter Freund
 Mrs. Bernadette Bergeron
 Dr. Henry Kimborough
 Miss Margaret Breen
 Mr. and Mrs. W. H. Ball, Jr.
 Mr. and Mrs. G. A. Kraft
 Miss Margaret Ludden
 Mr. and Mrs. J. B. Reis
 Mr. and Mrs. A. K. Bongner
 Mr. and Mrs. L. Allison
 Miss Thelma Pape
 Mr. and Mrs. M. T. Flynn
 Mr. and Mrs. C. V. Rochow
 Mr. and Mrs. F. J. Schleicher
 Judge and Mrs. Granville Hogan
 Mr. and Mrs. F. J. Oltman
 Mr. John P. Casey
 Mr. R. P. Cummins
 Mr. and Mrs. H. T. Bussmann
 Mr. J. J. Brown
 Mrs. Inga Block
 Dr. and Mrs. R. E. McBride
 Miss Mary E. Newell
 Mr. and Mrs. J. S. Walsh
 Miss Helen O'Brien
 Mr. and Mrs. F. J. McKenna
 Mrs. F. C. Garthoffner
 Mr. and Mrs. Edward Prendergast
 Mr. and Mrs. Geo. Edw. Wibracht
 Mr. and Mrs. Henry J. Wilde
 Dr. and Mrs. F. G. Zilliken
 Mr. and Mrs. Edw. H. Strecker
 Mr. John F. Shuford
 Mr. and Mrs. Joseph E. Hillemeier
 Mr. W. F. Graves
 Mr. and Mrs. Theo. Gottlob
 Mr. and Mrs. M. H. Ryan
 Mrs. Mary Streuber Drummond
 Mr. and Mrs. George L. McGinty
 Mr. and Mrs. J. H. Reddin
 Mr. and Mrs. John Day, Jr.
 Misses Mary and Loretto Day
 Dr. Phillip Ritter
 Miss Margaret Reardon
 Dr. and Mrs. A. L. Stabler
 Mr. and Mrs. R. M. Janes
 Miss Bernice Wolff
 Miss Margaret McCord
 Mr. Kehoe
 Mrs. Geo. McNulty
 Mrs. R. E. M. Bain
 Mrs. Leo Moser
 Mrs. C. Tompkins, Jr.
 Mr. J. D. Healy
 Mr. and Mrs. Franz Cramer
 Mrs. Joseph E. Muckerman
 Mrs. Martin Shaughnessy
 Mrs. Richard Taylor Stith
 Mrs. E. J. O'Donnell
 Loretto Academy, St. Louis, Mo.
 Loretto Academy, El Paso, Texas
 St. Mary's Academy, Denver, Colo.
 Loretto Academy, Kansas City, Mo.
 Loretto High School, Louisville, Ky.
 St. Mary's High School, Colorado Springs,
 Colo.
 St. Mary's High School, Sterling, Ill.
 Sisters of Loretto, Kankakee, Ill.
 Sisters of Loretto, Highland Park, Ill.
 Sisters of Loretto, Rockford, Ill.
 Sisters of Loretto, Douglas, Arizona
 Loretto Academy, Santa Fe, N. M.
 Loretto Foundation
 St. Rose's School, St. Louis, Mo.
 St. Pius School, St. Louis, Mo.
 Meletio Sea Food Co.
 Morgenthaler's Cleaning Co.
 Wacker-Helderle Undertaking Co.
 Frier's Pharmacy, Inc.
 A Friend
 A Friend



Distinction

*Distinctive ideas in annuals
are a prime factor in a
successful book - of course
service and quality can
not be overlooked ~ ~ ~*

*The sign of the
trade mark means*

Engraving Service Plus

*Close Co-operation between
Staff and Annual Department*

Central ENGRAVING COMPANY
CALUMET BUILDING
ST. LOUIS, MISSOURI
COLLEGE ANNUAL BUILDERS OF AMERICA



Compliments
of
ST. LOUIS COSTUME CO.

CHestnut 7244 Residence Hilland 8982

FRED SCHMECKEBIER

Wholesale Candy

416 South Seventh St.

EDW. J. SCHEER ST. LOUIS, MO.

**For Girl
Graduates**

Exclusively cut Diamonds set in
pins, rings, necklaces and brace-
lets. Just the gift for a lovely
young girl!!

BOLLAND'S

Locust at Tenth

"Jewelers for 84 Years"

Compliments of
LORETTO ACADEMY

3407 Lafayette Ave. St. Louis, Mo.

HEIL CORPORATION

210-214 S. 4TH ST. ST. LOUIS, MO.

LABORATORY SUPPLIES

APPARATUS CHEMICALS

Reinforced Concrete Concrete Foundations
Stone Masonry Under Pinning
Granitoid Work

Geo. L. Cousins Contracting Co.

Office and Yard

841 Rosedale Ave. CABany 5902

ROBERT'S
"Home-Like" **FUNERAL PARLORS**
1905 S. Grand Blvd.
Opposite Reservoir Park
AMBULANCE SERVICE
GRand 3681 St. Louis, Mo.

Compliments
of
Webster Groves Trust Co.

S. W. STEIN MEAT COMPANY

Wholesale

BEEF, VEAL, LAMB, PROVISIONS

314 South 21st Street

St. Louis, Mo.

Sole Distributors of

CUDAHY'S PURITAN HAMS, BACON

and **LARD** in St. Louis

"The Taste Tells"

Flowers Delivered Everywhere
Member F. T. D.

CERNY FLORAL COMPANY

Flowers for All Occasions

Webster Store Kirkwood Store
122 E. Lockwood Ave. 344 S. Kirkwood Rd.
Phone, WEBster 2950 Phone KIRkwood 916

Compliments
of
CLASS OF '32

HENRY P. HESS, *Architect*

1001-2 AMBASSADOR BUILDING
ST. LOUIS, MO.

Architect for Loretto Hall

Office Phone, CEntral 1070

Residence, FOrest 7040

Ambrose Mueller Drug Co.

14 N. GORE and 18 W. BIG BEND

Exquisite Toiletries
Famous Lunches
and Best Prescriptions

The last word in Modern Drug Stores

PA rkview 1600-1-2-3

Dorr & Zeller Catering Co.

WEDDINGS, RECEPTIONS AND TEAS
SUPPLIED ON SHORT NOTICE

DeBaliviere and Waterman Avenues
St. Louis

Phone: GARfield 6297

DR. ALOIS A. WINTERER

Expert Optometrist and Optician
Eyes Scientifically Examined and Glasses
Made to Correct All Defects of the Eye
202 North Seventh (near Pine) St. Louis

Compliments of

STANDARD RAIL AND STEEL COMPANY

Compliments of

CHRISTIAN BROTHERS HIGH SCHOOL

Clayton Road and University Lane

Compliments of

JORDAN-SCHEID CO., INC.

913-15 Market St.
St. Louis Largest Distributor of
Used Office Equipment

Compliments of

OLD ORCHARD STATE BANK

Old Orchard and Big Bend Roads

Webster Groves, Mo.

ICE NOT ONLY KEEPS FOODS COLD,
BUT FRESH AND JUICY, RETAIN-
ING ALL THE NATURAL
FLAVORS

Foods do not dry out in the iced refrigera-
tor. You do not have to keep foods
in special hydrator containers.

THE CITY ICE & FUEL CO.



HUNLETH MUSIC CO.

516 LOCUST ST.
MOST COMPLETE MUSIC HOUSE IN ST. LOUIS

Band and Orchestra Instruments

SHEET MUSIC, VICTROLAS RECORDS

When in Need of
ART SUPPLIES AND
DRAWING MATERIALS
Call on Us
BADER'S
Phones: GARfield 2870-2871
1110 LOCUST ST. ST. LOUIS

COMPLIMENTS OF THE
WARD BROS.

Oh, my dear! you look so sweet,
Your linen's always white as snow!
How do you keep the tots so neat?

"Just Phone NEWstead 0730"



Laundry

Moderate Prices
All Services
Trucks Everywhere

Manchester at Kingshighway

FOLLOW YOUR NOSE
to the
SILVER ROSE
4501 South Kingshighway RIverside 1144

COMPLIMENTS OF
WOOD'S PHARMACY

We, in Unison with Other Webster Merchants
are Proud of

WEBSTER COLLEGE
And Appreciate Your Patronage
OLD ORCHARD PHARMACY
Albert C. Lishen, Mgr. WEBster 2671 or 2672

Complimentary Advice from a Friend
"Take Up Ice Skating"
It's Good for Your Health

HARRY JOHNS

Cleaning and Dyeing Company

WEBster 163

Office: Plant:
W. LOCKWOOD 142 W. BIG BEND RD.

Compliments of the
CAFETERIA OF WEBSTER
COLLEGE

In Appreciation of the Fine Spirit Shown
by Our Student Patrons

BURNS' DRY GOODS

New Location
122-124 WEST LOCKWOOD
Phone: WEBster 3023

CEntral 1618 CHestnut 5023

ST. LOUIS BAND INSTRUMENT
COMPANY
1113 OLIVE STREET

Exclusive Dealers for
C. G. CONN, LTD.,
World's Largest Manufacturers of
Fine Musical Instruments

CAbany 5016 WE DELIVER CABany 6590

NELSON'S

Delicious Bakery Goods and Candies
Ice Cream of Finer Quality
440 DE BALIVIERE AVE.

**MERMOD, JACCARD & KING
JEWELRY CO.**

Manufacturers and Designers of
Class Pins, Commencement Invitations,
Dance Programs and Fraternal Stationery
900 LOCUST STREET St. Louis, Mo.

John H. Gebken Wm. Wingbermuehle
Wm G. Benz

GEBKEN UNDERTAKERS
Chapels and Parlors

2630 GRAVOIS AVE. LAclede 1272
2842 MERAMEC ST. RIverside 3760

THOS. J. FARRIS

District Manager
Missouri State Life Insurance Company
1501 LOCUST STREET
CEntral 1700 CABany 6906

Compliments of
J. C. WEILER

Compliments of
JAMES O'CONNOR COFFEE CO.

**WM. CLARKSON & SONS
WOOLEN CO.**

Serges, Veilings, Linens, Laces, Silks
New Address
612-614 FRANKLIN AVENUE
St. Louis, Mo. CEntral 6789

HYDROX



LOOSE-WILES BISCUIT CO.

FISHER OPTICAL COMPANY

Kodak and Photo Supplies
Downtown Store
915 LOCUST GARfield 1307
Uptown Store
Metropolitan Bldg.
510 N. GRAND BLVD. JEFFerson 5736

ST. LOUIS FOUNDRY
Henry Stuckstede Herman Stuckstede

STUCKSTEDE & BRO.

Manufacturers of BELLS
2735 and 2737 LYON STREET
PRespect 0793 St. Louis, Mo.



Beef and
Pork Packers
TYler 3170
HAMS AND BACON "Deliciously Mild"
HIGHEST QUALITY SAUSAGE
Highly Recommended by All Quality Dealers
Our inspection number is 192.
It is stamped on the product.
21ST ST. TO FLORISSANT AVE.
BREMEN AVE. TO FARRAR ST.



CHAPMAN'S FINE CLEANING
You Are Assured a Dependable Service

540 Arcade Building CHestnut 9609

ROMANO
COATS AND DRESSES

812 Olive Street Saint Louis

CHARLES F. STUART & SON

Undertakers
Now Located in New Home
FOrest 7000 FOrest 7001
Union Near Bartmer

**JOHN DOCKERY AND SON
REAL ESTATE CO.**

1002 CHESTNUT STREET
CHestnut 6279

PLACE YOUR ORDER NOW
With the
ECCLESIASTICAL MARBLE CO.

4177 MERAMEC LAclede 7288
St. Louis, Mo.

SID WHITING STUDIO

OLIVE AT PENDLETON

Jefferson 7294

Plenty of Parking Space

M A K E R O F
T H E F I N E R
P H O T O G R A P H S



P H O T O G R A P H S L I V E F O R E V E R

Parker Undertaking Co.

MAPLEWOOD
7359 Marietta
Tel. Hilland 0031

WEBSTER GROVES CHAPEL
15 West Lockwood Tel. Webster 205

Dr. C. M. COE, Inc.

Specialists in
Ambulant Proctology
Consultation and Examination Free

Hours: 9:00 A. M. to 8:00 P. M.
Sundays 10:00 to 1:00
501 PINE ST. ST. LOUIS, MO.

Dresses, Suits and Coats Stay Clean Longer
When Cleaned by the

**EXCELSIOR-LEADER ZORIC SYSTEM
OF GARMENT CLEANING**

An added service—a fit companion to the many
quality services rendered by

**EXCELSIOR-LEADER
LAUNDRY CO.**

Dry Cleaning Dept.
2325 TEXAS AVE. VIctor 3960

Wet Wash Service at
The Cascade Wet Wash Laundry Co.
2655 Victor St. VIctor 4708

L. FAVAZZA

Wholesale Fruits and Produce

1228 N. Seventh Street

St. Louis, Mo.

Central 8787

WE SUPPLY WEBSTER COLLEGE

COOKE-STUBINGER

Hotel Kitchen Equipment Company

Makers of Cornet & Collar Zincs

1316 MORGAN STREET

St. Louis, Mo.

Beauty Now . . .

Permanence in Later Years . . .

Assured for your Beckett Bound Book. As the years pass, the contents of your annual will become more and more priceless.

Bound as it is, in a Beckett Cover, this edition with ordinary care will last more than a lifetime.

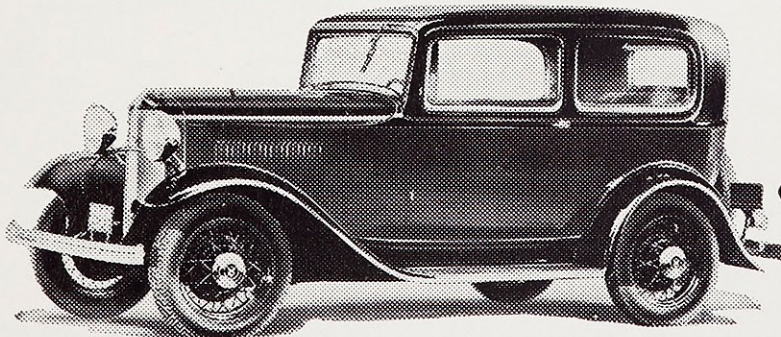
The distinction and charm of genuine craftsmanship possessed by all Beckett Covers is well exemplified in this 1932 LAURETANUM.

BECKETT COVERS

BECKETT COMPANY

200-212 Pine Street St. Louis, Mo.

Get
Your
New
Ford



24
Hour

4



8

Service

from CHAMBERS MOTOR CO., 3863 S. Grand Blvd.

A SUITABLE WASHDAY SERVICE
FOR EVERY FAMILY BUDGET

Phone DElmar 4720

West End Laundry

"Complete Laundry Service"

COMPLIMENTS

OF A

FRIEND

AEOLIAN Company of Missouri
W. P. CHRISLER, President

1004 Olive

Meeting the circumstances of our customers has given
us one of the largest purchasing clienteles in the country

Use

YELLOW CABS

FOrest 1234



To establish a printing organization of such capacity and with such resources as to guarantee to the St. Louis Territory the service to which it is entitled yet to maintain a high standard of quality the ideals of the founders of this institution have been fully realized

VON HOFFMANN PRESS
Ninth at Walnut
Saint Louis

Publications -- Catalogs -- Annuals -- All kinds of Commercial Printing



"Till We Meet Again"