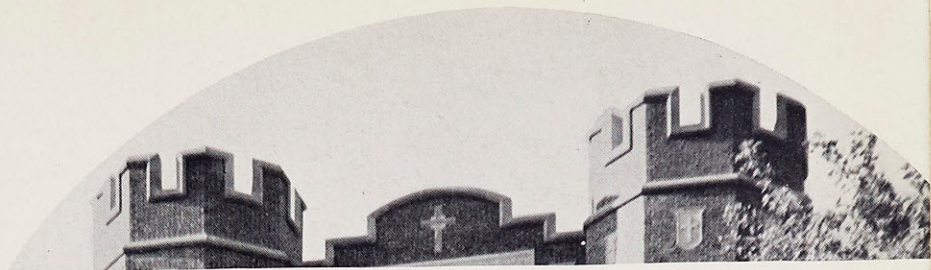


L. LAURETANUM



The Centennium 1937

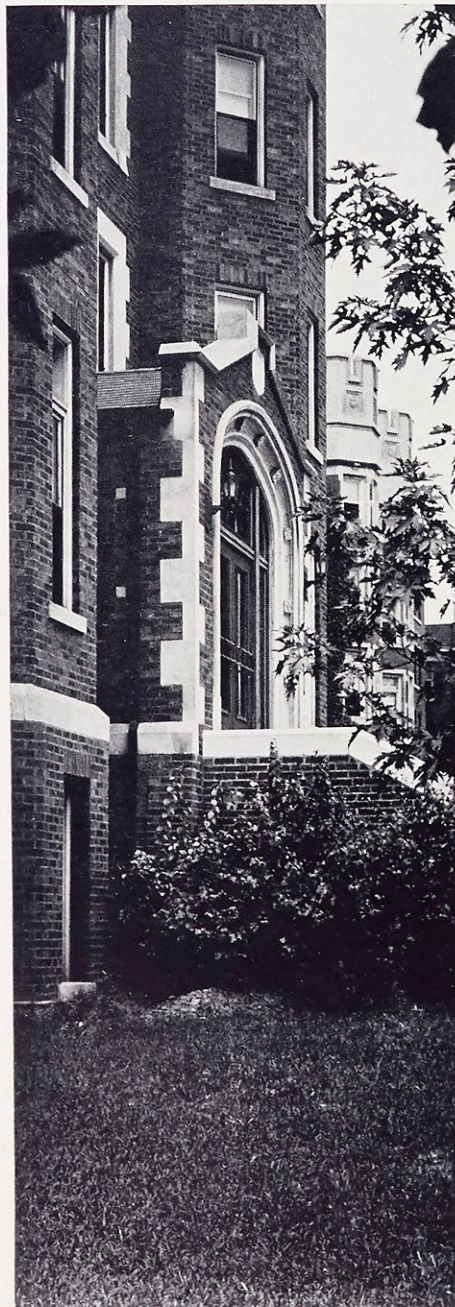


THE Nineteen Hundred Thirty-seven students of Webster College present their yearbook. The following pages relate the progress the school has made since its last publication.

WEBSTER COLLEGE
WEBSTER GROVES, MISSOURI



Presented By



VERONICA COAD
Editor-in-Chief

CARMELITA KLORER
Associate Editor

MARY FRANCES WALSH
Business Manager

MARGARET FINK
Art Editor

BARBARA VETTE
Advertising Manager

JEAN PICKEL
Patrons

Engraving
Central Engraving Company

Printing
Von Hoffmann Press

Photography
Dieckman Studio
Alex Piaget
A. J. Nolte

Binding
Becktold Company

Dedication

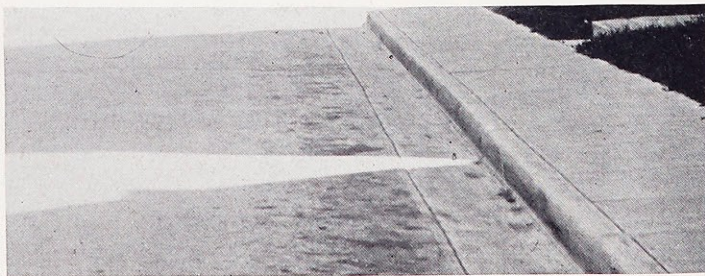
To Mother Edwarda, in honor of her many years of faithful service and of her success as Mother Superior of Webster College, we dedicate this Nineteen Hundred Thirty-seven Lauretanium.





WE, the
Lauretanum staff, present
this book to the students
of Nineteen Hundred
Thirty-seven. In it we have
endeavored to record
faithfully many important
moments of school life. We
hope its pages will recall
these happy memories of
college days at Webster.

Forward



Contents

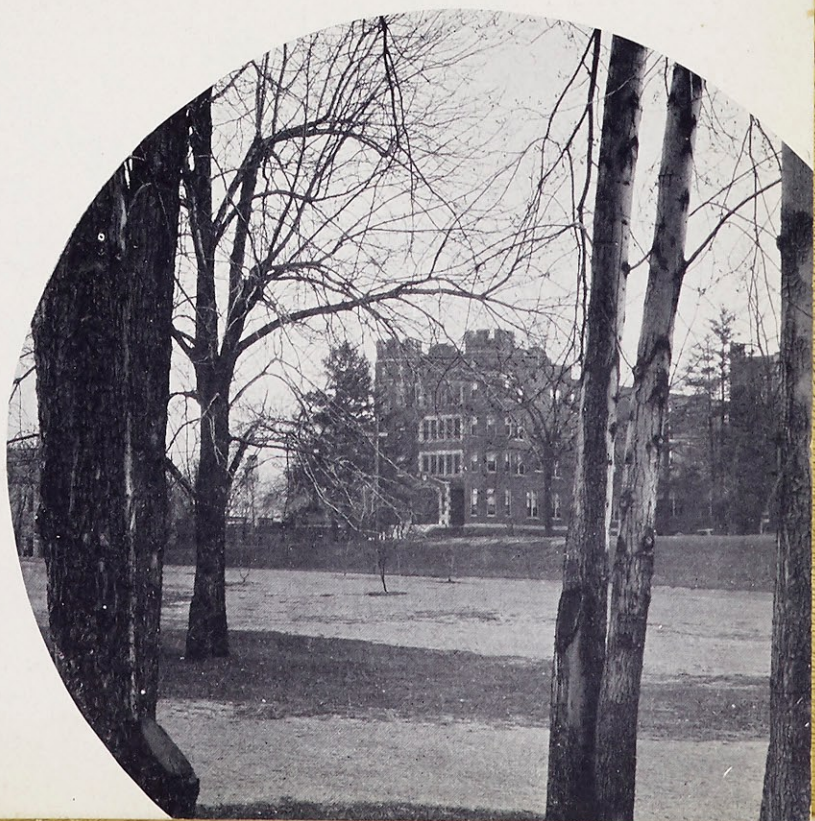
COLLEGE

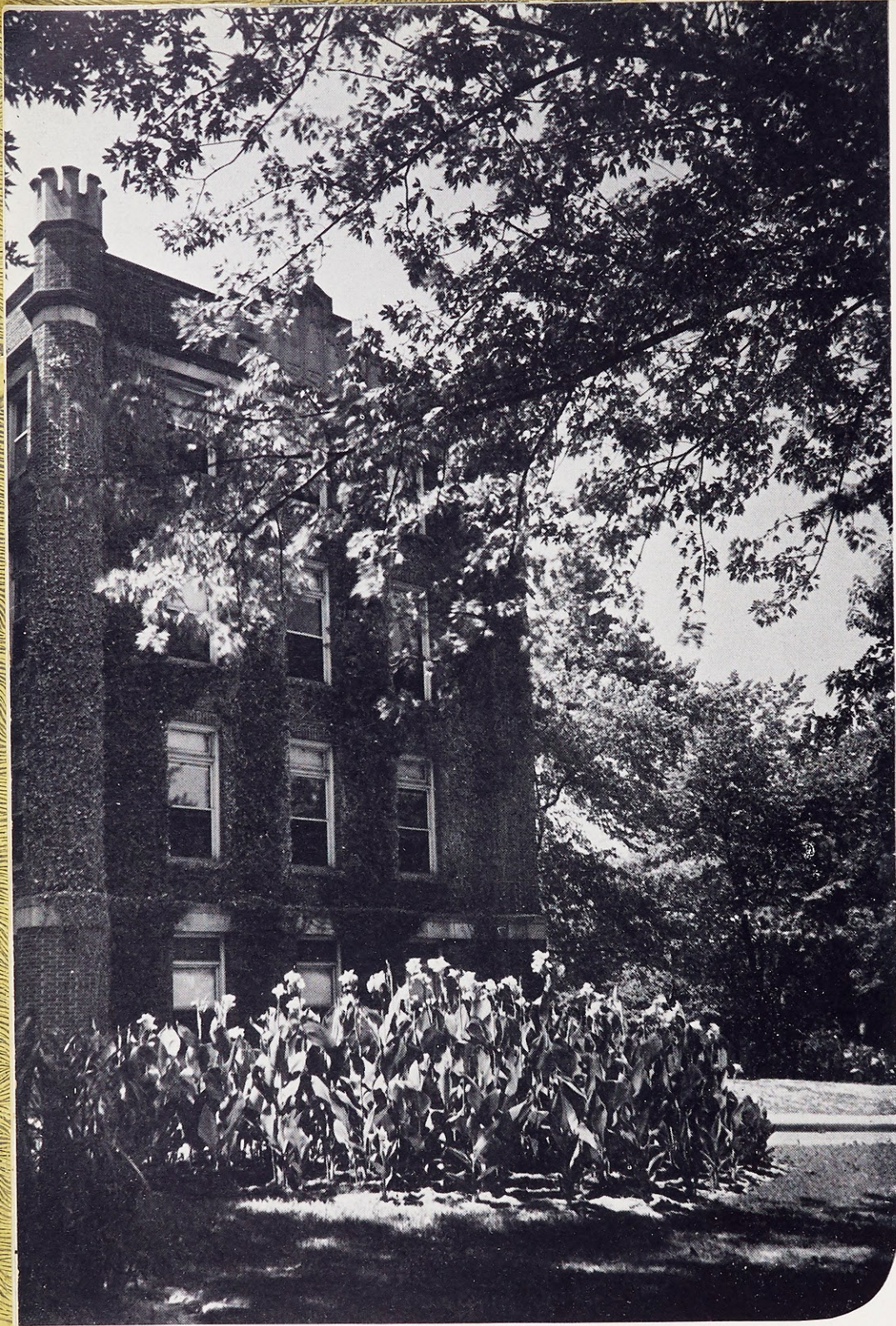
CLASSES

ACTIVITIES

ORGANIZATIONS

SPORTS





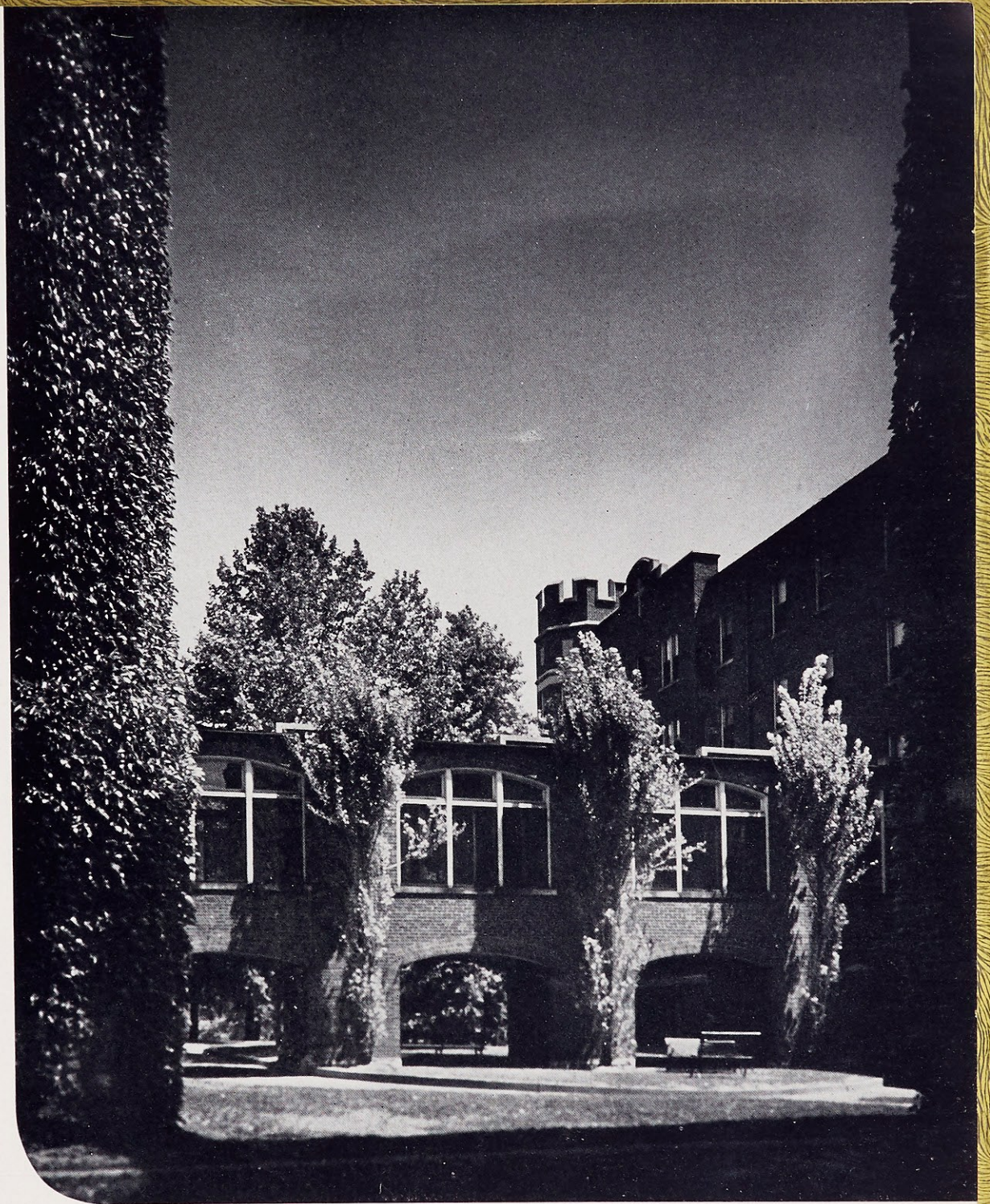
Owens Webster

Reaching Upward,
Webster College Towers Heavenward,
Forever Seeking the Newest Heights.



Owens Webster





The school, dear to the hearts of every Websterite, is our alma mater. Within its walls are inclosed the standards of highest ideals. It is with pride that we salute Webster College.



OUR PRESIDENT

DR. GEORGE FRANCIS DONOVAN

FRIENDS OF WEBSTER COLLEGE:

OUR LAURETANUM this year signifies a victory in originality, a triumph in beauty and an achievement in form and thought. It is a tribute both to our students and our faculty.

It is only fitting and proper in the perfection of the purpose and the scope of this work to dedicate it to our own beloved Mother Edwarda, a counselor and friend to all of us during these past six years.

WE HONOR

Nineteen hundred thirty-seven marks the twenty-fifth anniversary of the ordination to the priesthood of Reverend Martin J. O'Malley, C. M., S. T. D. Father O'Malley has been connected with the college for many years, and during that time he has shown himself a devoted friend of both the sisters and the students.

Father O'Malley has been instrumental in the establishment of several new organizations in the college. The most notable of these are the study club, which has been functioning for several years, and the Seminar, which was just organized this year. These are only a few of Father's many contributions to the school.

It is on this great occasion that we wish to congratulate Father O'Malley on his years of faithful service both to the Redemptorist Order and to the Loretto Sisters. In the name of the students, the Lauretanum Staff extends its deep felt gratitude and appreciation.



REVEREND
MARTIN J. O'MALLEY
C. M., S. T. D.

The Nineteen Thirty Seven

OFFICERS OF ADMINISTRATION

GEORGE FRANCIS DONOVAN, A. M., Ph. D.
President

MOTHER M. EDWARDA ASHE, A. M.
Regent

SISTER M. FLAGET WALLER, A. M.
Acting Dean of Studies

SISTER FRANCES MARIE WALSH, A. M.
Dean of Women

SISTER LILLIAN CLARE REED, A. B.
Registrar

SISTER KATHLEEN MARIE FOLEY
Treasurer

SISTER MARY JOSEPH SCHERER, A. M., Ph. D.
Librarian

The Student Health Service was first introduced at Webster College in 1934. It has gradually developed, and this year a Health Room was furnished with the latest medical equipment. A registered nurse is always ready to serve the resident and day students. This service has had a successful existence and its future will be one of growth and expansion.



ELLA MARIE SMITH,
R. N., B. S.
Director of Student
Health Service



FACULTY

- SISTER MARY LOUISE BEUTNER, A. M.
Instructor in English
- SISTER ALOYSIA MARIE BLINCOE, A. M.
Professor of English and Director of the Department
- SISTER MARY PAULA CARETTO, Mus. B.
Instructor in Voice
- SISTER MARY BORGIA CLARKE, A. M., Cand. Ph. D.
Professor of Mathematics and Director of the Department
- SISTER MARY HARRIET CONDON, A. B.
Graduate Fellow in Biology
- SISTER MARY EDMUND FERN, A. M., Ph. D.
Professor of Classical Languages and Director of the Department
- SISTER GERMAINE FOGARTY, B. S.
Instructor in Mathematics and Physics
- SISTER MARY ADALINE GEMOETS, Mus. M.
Professor of Theory of Music and Director of the Conservatory
- SISTER MARY ALPHONSINE HENSEN, Mus. B.
Instructor in Organ
- SISTER MARY JOECILE HUNLETH
Assistant in Conservatory, Violin
- SISTER LUCY MARIE JANES, A. B.
Graduate Fellow in French
- SISTER DOROTHY MARIE JENKINS, Litt. B.
Instructor in Art
- SISTER MARY DOLORINE MORRISON, A. M., Ph. D.
Professor of English and Speech and Director of the Department of Speech
- SISTER MARY FELICITAS QUINLIVEN, A. M.
Instructor in Spanish and Director of the Modern Language Department
- SISTER MARY ANTONINA RYAN, A. M.
Professor of Biology and Director of the Department
- SISTER MARY ALONZA SMITH, M. S., Cand. Ph. D.
Instructor in Chemistry
- SISTER MARY AUBERT TENNELLY, A. B.
Graduate Fellow in History
- SISTER IMELDA WALLACE, A. B.
Assistant in Education
- SISTER MARY FLAGET WALLER, A. M.
Instructor in Education
- SISTER FRANCES MARIE WALSH, A. M.
Professor in Education

The Nineteen Thirty Seven



FACULTY

REV. LEO P. FOLEY, C. M., S. T. D.

Professor of Philosophy and Director of the
Department

REV. JAMES P. O'MALLEY, C. M., A. M.

Professor of Religion and Director of the
Department

LOUIS E. JAMES, A. M.

Assistant Professor of Physics

REV. MARTIN J. O'MALLEY, C. M., S. T. D.

Professor of History

RUSSELL J. SCHWELLENBACH, A. M.

Instructor in Sociology

REV. R. J. KIRSCHENHEUTER, C. M., A. M.

Professor of Religion

VERNON J. BOURKE, A. M., Cand. Ph. D.

Instructor in Philosophy

HAMILTON THORNTON, A. B.

Instructor in Journalism

BENEDICT MICHAEL BOMMARITO, A. M.

Instructor in Classical Languages

Catalogue



FACULTY

CELIA JEAN McCUE, M. S.

Instructor in Physical Education

MRS. ANNA McCLAIN SANKEY, A. B.

Instructor in Dramatic Art

MARY ALMA FREGEAU, A. B.

Assistant in English

FREDERIC W. LAIRD, M. S., Ph. D.

Instructor in Chemistry and Acting Director of the Department

MARY MARGARET BREY, A. M.

Instructor in Art

CHRISTIAN BONNET, LL.M.

Instructor in French

JOSE MANUEL ESPINOSA, A. M., Ph. D.

Instructor in History

AGNES C. SCHMIT, M. S.

Instructor in Chemistry

ELIZABETH LUDDEN, A. M.

Instructor in Speech

NELSON J. WADE, M. S., Ph. D.

Instructor in Biology



Classes

Four years spent in studies, four years of enjoyment, are culminated by a glorious graduation. Time spent in classes is soon forgotten; hard work no longer hovers over weary heads; and theses are written. And now remains a treasured memory of these happy hours. Those who have completed their work are cherishing these thoughts. Those who have yet to complete their college lives are looking forward to their final days. One and all will always bear and be proud of the mark of a Webster student.



The Nineteen Thirty Seven

Lucille Geis

Chicago, Illinois

A. B. in Spanish
and English



A Spanish major, a very capable, always willing senior, and a swell friend. She's our Lou!

Student Council, '35, Vice-President, '36
Student Government Board, '37
Class President, '34, '37
Lauretanum, Editor-in-Chief, '36
Spanish Club, '34, '35, '36, '37
Classical Club, '34, '35
Press Club, '34, '35, '36, '37
Northern Illinois Club, '34, '35, Vice-President, '36, President, '37
Class Volleyball, '34, '35, '37
Sodality, '34, '35, '36, '37
C. S. M. C., '34, '35, '36, '37
Biology Club, '35
Freshman Advisory Board, '36, '37
Athletic Association, '34, '35, '36, '37

Lawetamm



Gertrude O'Rourke

Webster Groves, Missouri

B. S. in Chemistry
and Mathematics

*We will all say we knew her
"when", when Gertie's great
play is produced on Broad-
way.*

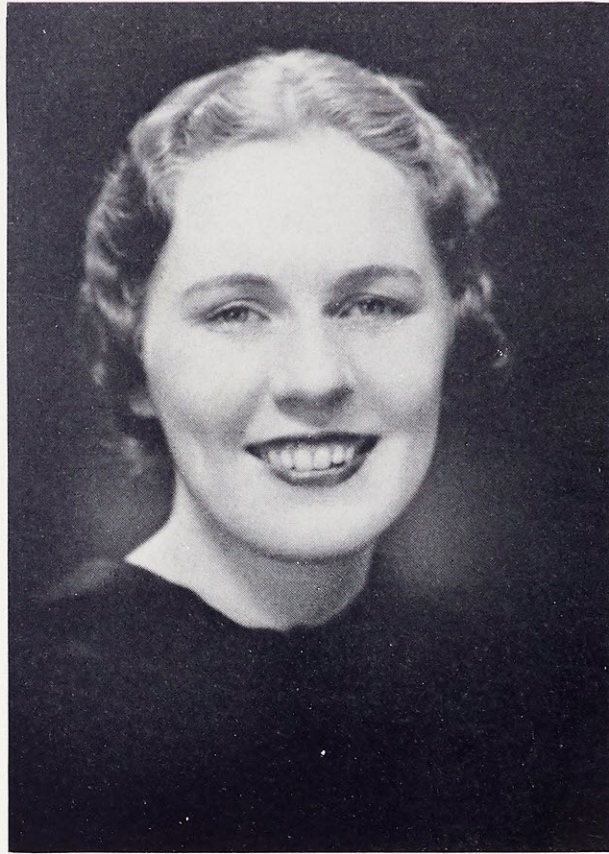
Sodality, '34, '35, '36, '37
C. S. M. C., '34, '35, '36, '37
Chemistry Club, '34, '35, '36, '37
Mathematics Club, '34, '35, '36, '37
Le Cercle Francais, '34, '35, Secretary, '36, President, '37
Poetry Club, '36, '37
St. Louis Section Club, '34, '35, '36
Class Vice-President, '36
Tennis, Singles Champion, '34, '36
Ping-Pong, Singles Champion, '37
Class Basketball, '34, '35, '36, '37
Class Baseball, '34, '35, '36, '37
Class Volleyball, '34, '35, '36, '37
Varsity Basketball, '36, '37

The Nineteen Thirty Seven

Rosemary Moller

St. Louis, Missouri

A. B. in Spanish
and English



*Even Titian would be jealous
of Moller's hair; and who
wouldn't envy her happy dis-
position?*

Sodality, '34, '35, '36, '37

C. S. M. C., '34, '35, '36, '37

Spanish Club, '34, '35, '36, '37

Biology Club, '35, '36

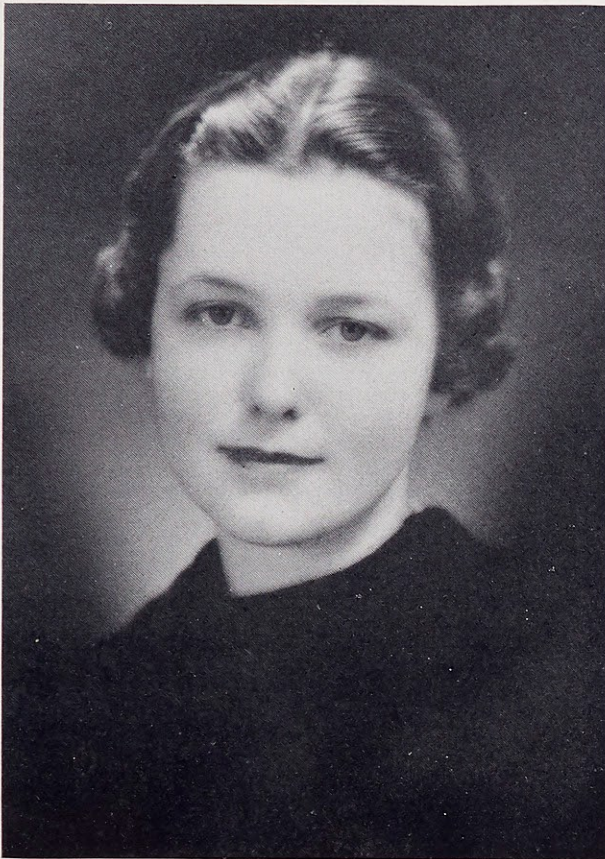
Classical Club, '34, '35, Secretary-Treasurer, '36

St. Louis Section Club, '34, '35, '36, '37

Athletic Association, '34, '35, '36, '37

Chemistry Club, '35

Cadet



Anastasia Schlueter

Overland, Missouri

B. S. in Music

*Annie's not only a musician
but she's lots of fun along
with it.*

Sodality, '34, '35, '36, '37
C. S. M. C., '34, '35, '36, '37
Music Guild, '34, Vice-President, '35, President, '36, '37
Choral Club, '34, '35, '36, '37
Orchestra, '34, '35
Le Cercle Francais, '34
May Day Maid, '34, '35
Chemistry Club, '37
Tennis, Doubles Champion, '36
Class Vice-President, '37
St. Louis Section Club, '34, '35, '36, '37

The Nineteen Thirty Seven

Mary Frances Higgins

Webster Groves, Missouri

Ph. B. in English
and French

*Once a queen always a queen.
We think Hig is just the tops.*



Le Cercle Francais, '34, '35, '36, '37
Biology Club, '34
Sodality, '34, '35, '36
C. S. M. C., '34, '35, '36, '37
Editor English Annual, '37
Athletic Association, '34, '35, '36, '37
May Queen, '36

Lawetamm



Marion Rogles

St. Louis, Missouri

B. S. in Mathematics
and Chemistry

Marion really makes her studies practical. She's one of our best treasurers and business managers.

Student Council, Treasurer, '36
Student Government Board, Secretary, '37
St. Louis Section Club, '34, '35, '36, '37, President, '35
Sodality, '34, '35, '36, '37
C. S. M. C., '34, '35, '36, '37
Chemistry Club, '35, '36, President, '37
Spanish Club, '34, '35
Orchestra, '34, '35, '36
Web Staff, Business Manager, '37
Mathematics-Physics Club, '34, '35, '36, '37

The Nineteen Thirty Seven

Mary Rita Hughes

Leitchfield, Kentucky

B. S. in Chemistry
and Mathematics

*A regular Kentuckian, and is
she proud of it! We don't blame
you, Rita.*



Sodality, '34, '35, '36, '37
C. S. M. C., '34, '35, '36, '37, Secretary, '35
Orchestra, '34
Choral Club, '34
Spanish Club, '34, '35
Kentucky Section Club, Secretary, '34, '35, '36, President, '37
Press Club, '34, Recording Secretary, '35, Corresponding Secretary,
'36, President, '37
Poetry Club, '36, Vice-President, '37
Mathematics Club, '35, '36, Secretary-Treasurer, '37
Chemistry Club, '34, '35, '36, '37, Secretary-Treasurer, '36
Class Volleyball, '34, '35, '36, '37
Class Basketball, '34, '35, '36, '37
Class Baseball, '34, '35, '36, '37
Varsity Basketball, '35, '36, '37
Lauretanum, Associate Editor, '36
Web Staff, '37
Loretine Staff, '37
Athletic Association, '34, '35, '36, Vice-President, '37

Lawetannum



Evelyn Wasem

Shrewsbury, Missouri

Ph. B. in History
and English

*Our life of the school is Evelyn.
Her giggle and her perpetual
scrapes keep us all laughing.*

Class Treasurer, '37
Biology Club, '35
Volleyball, '35
International Relations Club, Vice-President, '37
Press Club, '34, '35, '36, Vice-President, '37
Spanish Club, '35

The Nineteen Thirty Seven

Mary Evelyn Sherwin

Webster Groves, Missouri

B. S. in Music

Mary Evelyn strikes the artistic note: singing, playing, and poetry writing are her interests in life.



Choral Club, '34, '35, Secretary, '36, Vice-President, '37

Music Guild, '34, '35, Vice-President, '36, '37

Poetry Club, '37

Vodvil, '34, '35, '36



Ahrea Huger

St. Louis, Missouri

B. S. in Chemistry
and Mathematics

*Ahrea's flashing eyes and
captivating smile will always
win her many lasting friends.*

Athletic Association, '34, '35, '36, '37
Web Staff, '37
St. Louis Section Club, '34, '35, '36, '37
Choral Club, '34, '35, '36, '37
Chemistry Club, '34, '35, '36, Vice-President, '37
Mathematics Club, '35, '36, '37
Spanish Club, '34, Vice-President, '35
Student Spiritual Council, '36, '37
Sodality, '34, '35, '36, '37
C. S. M. C., '34, '35, '36, '37
Varsity Basketball, '35, '36, '37
Class Volleyball, '35, '36, '37
Class Basketball, '34, '35, '36, '37, Captain, '35
Class Baseball, '34, '35, '36, '37

The Nineteen Thirty Seven

Betty Henry

St. Louis, Missouri

Ph. B. in Spanish
and English

*Our Prefect, our poet, our
May Day Maid! Webster
won't be the same without
Betty.*



Sodality, '34, '35, '36, Prefect, '37
Vice-President of St. Louis College Sodality Union
Poetry Club, '36, President, '37
Student Government Board, '37
Student Spiritual Council, '34, '35, '36, '37
St. Louis U. Prom Maid, '37
May Day Maid, '36
Class Baseball, '34, '35, '36, Captain, '35
Class Treasurer, '34
C. S. M. C., '34, '35, '36, '37
Spanish Club, '34, '35, '36, '37
Loretto Players, '34, '35
Press Club, '35, '36, '37
Chemistry Club, '34, '35, '36, '37
Athletic Association, '34, '35, '36, '37
Mathematics Club, '35, '36
St. Louis Section Club, '34, '35, '36, '37

Lawetatum



Carolyn Wells

Webster Groves, Missouri

B. S. in Mathematics
and Physics

*A versatile girl, this Carolyn.
She does something from bas-
ketball to short stories.*

Mathematics-Physics Club, '35, '36, '37
Spanish Club, '34, '35, '36
Short Story Club, '35, '36, '37
Poetry Club, '37
Varsity Basketball, '35, '37
Class Basketball, '34, '35, '37
Class Baseball, '34, '35, '37
Biology Club, '34
Class Volleyball, '34, '35, '36
Webster-Kirkwood Section Club, President, '34
Sodality, '34, '35, '36, '37
C. S. M. C., '34, '35, '36, '37

The Nineteen Thirty Seven

Mildred Niedzialkowski

Webster Groves, Missouri

Ph. B. in History
and Sociology

*We've always been proud of
our Mildred. Her determina-
tion will get her there.*



Sodality, '34, '35, '36, '37
St. Louis Section Club, '34, '35, '36, '37
Choral Club, '34, '35, '36, '37
Spanish Club, '34, '35, '36, '37
International Relations Club, '37
Music Guild, '37
Library Staff, '37
Loretine Staff, '37
Vodvil, '34



Rosemary Noland

St. Louis, Missouri

Ph. B. in Speech
and English

Music and dramatics fill her time. But we mustn't forget all the hours Rosemary spends in broadcasting.

Sodality, '34, '35, '36, '37
C. S. M. C., '34, '35, '36, '37
Choral Club, '34, '35, President, '36
Music Guild, '36, '37
Loretto Players, '34, '35, '36, '37
Chemistry Club, '34, '36, '37
St. Louis Section Club, '34, '35
Le Cercle Francais, '34

The Nineteen Thirty Seven

Genevieve Hayden

Maplewood, Missouri

Ph. B. in History
and Education

*Her winning smile and even
temper make the school a hap-
pier place for all of us.*



Class Secretary, '37
Vodvil Business Manager, '36
Campus Guide Staff, '37
International Relations Club, '37
Classical Club, '34
Biology Club, '35
Spanish Club, Treasurer, '34, '35, '36
St. Louis Section Club, '34, '35, '36, '37
Sodality, '34, '35, '36, '37
C. S. M. C., '34, '35, '36, '37
Mathematics Club, '34

Lauretanum



Alice Louise Smith

St. Louis, Missouri

A. B. in Latin
and English

Competent, energetic, and always willing to help; no wonder she's our Student Government President.

Student Government Board President, Faculty Representative, '37
Student Spiritual Council, '36, '37
Sodality, '34, '35, Treasurer, '36, '37
Mission Board, '36, '37
C. S. M. C., '34, '35, '36, '37
Le Cercle Francais, '34, '35
Mathematics Club, '35
Lauretanum Staff, Circulation Manager, '36
Freshman Advisory Board, '37
St. Louis University Classical Club, Secretary, '37
Classical Club, '35, '36, '37
St. Louis Section Club, '34, '35, '36, '37

The Nineteen Thirty Seven

Dorothy Knisley

Webster Groves, Missouri

Ph. B. in English
and History

Always good-humored and laughing. Dorothy seems to take her history more gayly than anyone else.



Choral Club, '34, '35
Le Cercle Francais, '36, '37
Library Staff, '36, '37
Poetry Club, '36, Secretary, '37
Biology Club, '35
Loretine Staff, '37

Lauretanum



Jeanne Devaney

Webster Groves, Missouri

A. B. in English
and Spanish

From a glance at Jeanne's activities, it seems that she has kept most of our publications going.

Editor-in-Chief of Web, '37
Web Staff, '35, '36
Loretine Staff, Art Editor, '36, '37
Lauretanum Staff, Art Editor, '36
Sodality, '34, '35, '36, '37
C. S. M. C., '34, '35, '36, '37
St. Louis U. Prom Maid, '34
Spanish Club, '34, '35, '36, '37
Classical Club, '35
Biology Club, '35
Class Volleyball, '35
Class Baseball, '36
Class Basketball, '34
Short Story Club, '35, '36, '37
Missouri Section Club, '35

The Nineteen Thirty Seven

Rose Mary O'Donnell

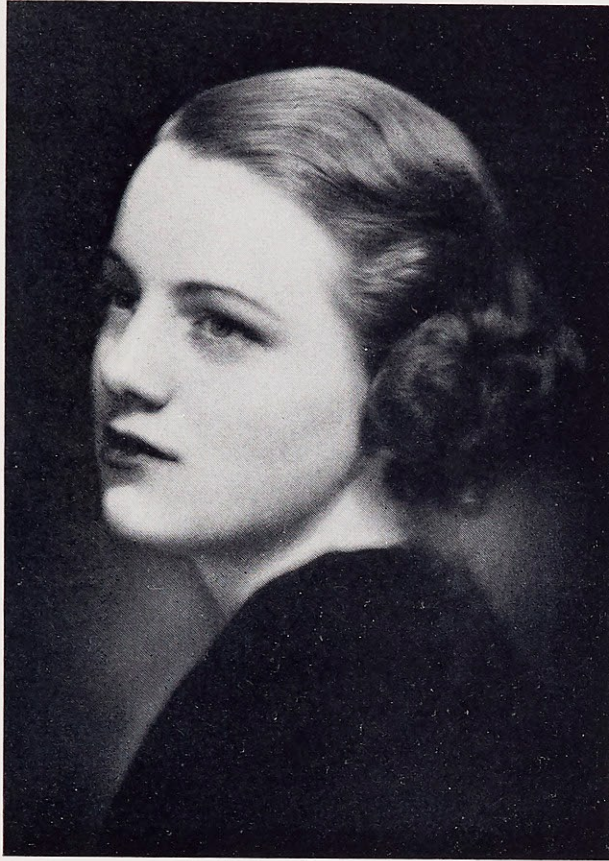
St. Louis, Missouri

A. B. in English
and Latin



*Our hats go off to "Rosie",
our Ivy Poet, our dramatist,
and our wit.*

Editor Loretine, '37
Ivy Poet, '37
Short Story Club, '35, Secretary-Treasurer, '36, President, '37
C. S. M. C., '34, '35, Treasurer, '36, '37
Mission Board, '36
Sodality, '34, '35, '36, '37
Class Treasurer, '36
Web Staff, '37
Poetry Club, '36, '37
Biology Club, '35
Press Club, '37
Classical Club, '35, '36, '37, Vice-President, '36
Le Cercle Francais, '34, '35
St. Louis Section Club, '34, '35, '36, '37
Class Baseball, '34, '35
Class Basketball, '35
Class Volleyball, '36



Jane O'Donnell

Webster Groves, Missouri

A. B. in English
and French

Full of the good old "vim and vigor", Jane puts pep into everything she does.

Student Government Board, '37
Student Council, '35
Web Staff, '34, '35, '36, '37, Associate Editor, '36
Lauretanum Staff, '36
Loretto Players, '34, '35
Vodvil, Assistant Chairman, '37
Sodality, '34, '35, '36, '37
C. S. M. C., '34, '35, '36, '37
Le Cercle Francais, '34, '35, '36, '37
Biology Club, '35
Mathematics Club, '34
Classical Club, '34, '35
Class Vice-President, '34
Class Basketball, '34
May Day Maid, '37

The Nineteen Thirty Seven

Theresa Dee

St. Louis, Missouri

Ph. B. in English
and History

Theresa's charming disposition has won her many loyal friends at Webster. We think she's okay!



Sodality, '34, '35, '36, '37

C. S. M. C., '34, '35, '36, '37

Music Guild, '37

Athletic Association, '34, '35, '36, '37

Chemistry Club, '35

Classical Club, '34, '35

Lauretanum



Moira Hayes

St. Louis, Missouri

B. S. in Chemistry
and Mathematics

*Our orator, our chemist, and
our stand-by in calamities.
What shall we ever do with-
out her?*

Sodality, '34, '35, '36, '37, Treasurer, '35
Students' Spiritual Council, '35
Student Council, '36
Student Government Board, Faculty Representative, '37
Class Secretary, '34, President, '35, '36
Student Personnel Director, '37
Chemistry Club, '34, Vice-President, '35, '36, Secretary, '37
Mathematics Club, '35, '36, Vice-President, '37
Choral Club, '34, '35, '36, '37, Secretary-Treasurer, '35
Poetry Club, '35, '36, '37, Secretary, '36
C. S. M. C., '34, '35, '36, '37
Lauretanum Staff, '36
Web Staff, '35, '36, '37, Circulation Manager, '35
St. Louis Section Club '34, '35, '36, '37
Athletic Association, '34, '35, '36, '37
Class Basketball, Co-captain, '34
Class Baseball, '34, '36, '37
Class Volleyball, '34
Music Guild, '35, '36, '37

The Nineteen Thirty Seven

Mercedes Grummel

St. Louis, Missouri

A. B. in Mathematics
and Physics



The girl who knows all the answers and does all the work. Witness her activity list.

Sodality, '34, '35, '36, '37
C. S. M. C., '34, '35, '36, Secretary, '37
St. Louis Section Club, '34, '35, '36, '37
Mathematics-Physics Club, '35, '36, '37
Spanish Club, '34, Treasurer, '35
Classical Club, '34, '35
Press Club, '34, '35, '36, '37
Web Staff, '35
Loretine Staff, Circulation Manager, '37
Campus Guide, Co-editor, '37



Catherine Phelan

St. Louis, Missouri

A. B. in Spanish
and English

*The girl who plays a star
basketball game in the begin-
ning of her career will go far.*

Sodality, '34, '35, '36, '37
C. S. M. C., '34, '35, '36, '37, Mission Board, '37
Spanish Club, '34, '35, '36, '37, President, '36
Classical Club, '34, '35
St. Louis Club, '34, '35, '36, Vice-President, '37
Mathematics Club, '35
Web Staff, '37
Library Staff President, '37
Athletic Association, '34, '35, '36, Secretary, '37
Class Baseball, '34, '35, '36, '37, Captain, '36
Class Volleyball, '36, '37, Captain, '36
Class Basketball, '36, '37
Varsity Basketball, '36, '37
Ping-Pong, Doubles Champion, '37

The Nineteen Thirty Seven

Gladys Wencker

St. Louis, Missouri

Ph. B. in English
and History



We can hardly single out any one thing to say about Gladys because she does everything well.

Lauretanum Staff, Business Manager, '36
Loretine Staff, Business Manager, '36
Athletic Association, '34, Treasurer, '35, Secretary, '36, President, '37
Poetry Club, '35, '36, '37, Vice-President, '36
Varsity Basketball, '34, '35, '36, Captain, '37
St. Louis Section Club, '34, Vice-President, '35, President, '36, '37
Web Staff, '36, '37
Sodality, '34, '35, '36, '37
Choral Club, '34, '36
C. S. M. C., '34, '35, '36, '37
Chemistry Club, '34, '37
Class Basketball, '34, '35, '36, '37, Co-captain, '34, Captain, '36
Class Volleyball, '35, '36, '37, Captain, '35
Class Baseball, '34, '35, '36
Tennis, Doubles Champion, '36
May Day Maid, '37

Lawetarium



June Stoddard

Webster Groves, Missouri

Ph. B. in History
and Education

*June saw her advantages and
made the best of them. We
know she will reach her goal.*

Sodality, '37
C. S. M. C., '34, '35, '36, '37
Spanish Club, '34, '35
Webster-Kirkwood Section Club, '34, '35
Press Club, '37
Biology Club, '34, Secretary-Treasurer, '35, President, '36
Choral Club, '34, '35, '36, '37
International Relations Club, Treasurer, '37
Class Baseball, '34, '35, '36
Class Basketball, '34, '35, '36
Class Volleyball, '34, '35

The Nineteen Thirty Seven

Ruth Godfrey

St. Louis, Missouri

B. S. in Mathematics
and Physics



*The great mainstay of our
Sodality committees and a
consistent honor student is
Ruth.*

Sodality, '34, '35, '36, Secretary, '37

Student Spiritual Council, '37

C. S. M. C., '34, '35, '36, '37

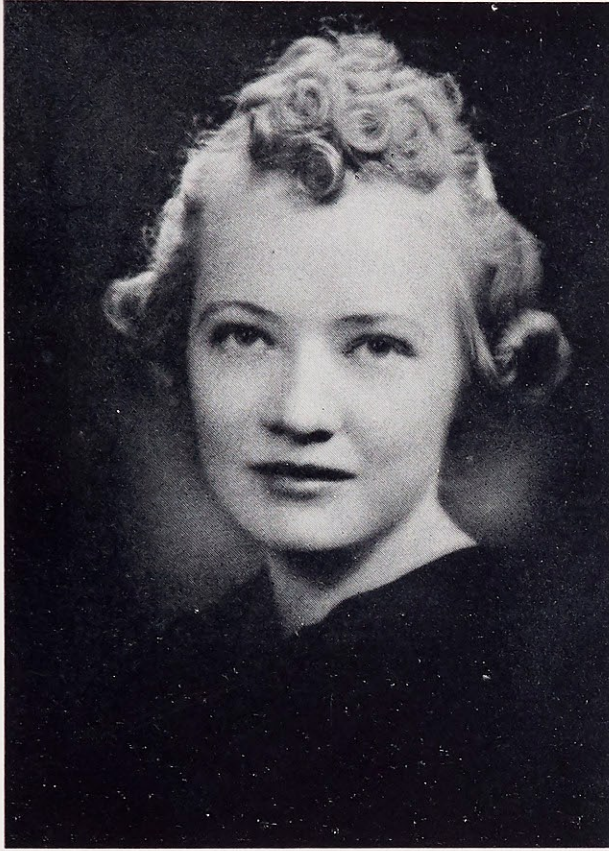
Mathematics-Physics Club, '35, Vice-President, '36, President, '37

Class Chairman Personnel Project, '37

St. Louis Section Club, '34, '35, '36, '37

Spanish Club, '34, '35, '36

Lawetamm



Ruth Crowe

Denver, Colorado

Quiet and blonde, with a satisfying sense of humor, Ruth also adds writing to her other abilities.

Sodality, '34, '35, '36, '37
C. S. M. C., '34, '35, '36, '37
French Club, '34, '35, '36, '37
Biology Club, '34, President, '35
Chemistry Club, '35
Web Staff, '36
May Day Maid, '35, '37
Class Baseball, '36

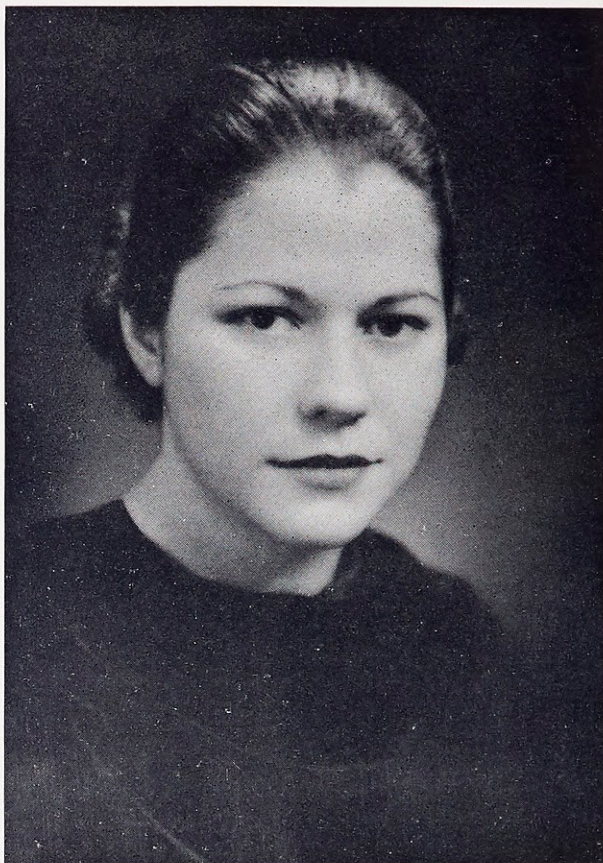
The Nineteen Thirty Seven

Virginia Carroll

Webster Groves, Missouri

A. B. in Speech and English

*Our dramatic star is Virginia.
Her Romeo made our hearts
beat, her Malvolio rouses our
sincerest laughter.*



Student Council, '34
Vodvil Chairman, '36
Loretto Players, '34, '35, '36, President, '37
Web Staff, Associate Editor, '36, Assistant Editor, '37
Varsity Basketball, '36
Biology Club, '34
Le Cercle Francais, '34, '35
Sodality, '34, '35, '36, '37
C. S. M. C., '34, '35, '36, '37
Classical Club, '34, '35
Class Basketball, '34



Dolores Becker

University City, Missouri

Ph. B. in History and English

Dolores really swings that old bat in the baseball tournaments. Her team will miss her.

C. S. M. C., '34, '35, Vice-President, '36, President, '37
Class Vice-President, '35
Choral Club, '34, '35, '36, '37
Vodvil, Costume Manager, '37
Sodality, '34, '35, '36, '37
May Day Maid, '36
Student Spiritual Council, '37
International Relations Club, President, '37
Biology Club, '34, Vice-President, '35, '36
Spanish Club, '34, '35, '36
Chemistry Club, '36
Varsity Basketball, '36, '37
Class Basketball, '34, '35, '36, '37
Class Volleyball, '34, '35, '36, '37
Class Baseball, '34, '35, '36, '37
Saint Louis Section Club, '36, '37

The Nineteen Thirty Seven

Dorothy Ryan

St. Louis, Missouri

A. B. in English and Spanish

Dorothy is the efficient secretary of the Dean; she knows all and keeps things running smoothly.



Sodality, '34, '35, '36, '37

C. S. M. C., '34, '35, '36, '37

Classical Club, '35, '36

Spanish Club, '34, '35, '36, '37, Secretary, '35

Chemistry Club, '35

St. Louis Section Club, '34, '35, '36, '37

Web Staff, '36

Class Secretary, '35, '36

Cortetarium



Virginia McCormick

Webster Groves, Missouri

Ph. B. in Speech and English

If ever you want a good laugh, watch "Cornick" play the nurse in Romeo and Juliet.

Sodality, '34, '35
Biology Club, '35
French Club, '34, '35
C. S. M. C., '34, '35, '36, '37
Loretto Players, '34, '35, '36, '37
Web Staff, '36, '37
Class Volleyball, '34

The Nineteen Thirty Seven

JUNIORS

Left to Right:

Ruth Savage
Theresa Buckler
Anne Huneke
Barbara Vette

Virginia Nash
Peggy Gamp
Carmelita Klorer
Margaret McBride

Jeanette Theobald
Jean Pickel
Jean Henning
Margaret Fink

Virginia Herre
Lenore O'Connor
Elizabeth Roehling
Peggy Chamberlain



RUTH SAVAGE, President
St. Louis, Missouri

VIRGINIA NASH
Clinton, Illinois

JEANETTE THEOBALD
St. Louis, Missouri

VIRGINIA HERRE
St. Louis, Missouri

THERESA BUCKLER, Vice-President
Loretta, Kentucky

PEGGY GAMP
Webster Groves, Missouri

JEAN PICKEL
St. Louis, Missouri

LENORE O'CONNOR
St. Louis, Missouri

ANNE HUNEKE, Secretary
St. Louis, Missouri

CARMELITA KLORER
St. Louis, Missouri

JEAN HENNING
St. Louis, Missouri

ELIZABETH ROEHLING
Webster Groves, Missouri

BARBARA VETTE, Treasurer
Kansas City, Missouri

MARGARET McBRIDE
Las Cruces, New Mexico

MARGARET FINK
Kirkwood, Missouri

PEGGY CHAMBERLAIN
Clayton, Missouri

Lawetatum



Left to Right:

Doris Volz
Dorothy Keeley
Marian Lower
Rose Mary Hoing

Veronica Coad
Mary Slechticky
Mary Frances Walsh
Rheta Stinson

Ruth Hauser
Ruth Garizio
Melba Godar
Frances Delmore

Mary Jane Dorsey
Marie Herr
Madelyn Whitener
Peggy Lynn

JUNIORS

DORIS VOLZ
Metamora, Illinois
VERONICA COAD
St. Louis, Missouri
RUTH HAUSER
Kankakee, Illinois
MARY JANE DORSEY
St. Louis, Missouri
DOROTHY KEELEY
East St. Louis, Illinois

MARY SLECHTICKY
Ava, Illinois
RUTH GARIZIO
Colorado Springs, Colorado
MARIE HERR
St. Louis, Missouri
MARIAN LOWER
Ontario, California
MARY FRANCES WALSH
St. Louis, Missouri
MELBA GODAR
Eureka, Missouri

MADelyn WHITENER
Fredericktown, Missouri
ROSE MARY HOING
Kirkwood, Missouri
RHETA STINSON
Webster Groves, Missouri
FRANCES DELMORE
East St. Louis, Illinois
PEGGY LYNN
Chicago, Illinois

The Nineteen Thirty Seven

SOPHOMORES



Mary McGinn, Doris Rogles, Virginia Vermeersch, Rosemary Moerschel, Mary Jane Byrne, Mary Virginia Casey, Florence Schuchart, Dorothy Henderson, Helen Buckley, Jane McFarland, Florence Herre, Victoria Mortland, Martha Baechle, Martha Cantalin, Mary Elizabeth Flynn, Bernice Schleicher, Genevieve Hogan, Margaret Corrigan, Regina Madden, Isabel Hoban, Virginia Herrod.

MARY MCGINN, President
Rock Falls, Illinois

DOROTHY HENDERSON
Webster Groves, Missouri

MARY ELIZABETH FLYNN
St. Louis, Missouri

DORIS ROGLES, Vice-President
St. Louis, Missouri

HELEN BUCKLEY
Macon, Missouri

BERNICE SCHLEICHER
St. Louis, Missouri

VIRGINIA VERMEERSCH, Secretary
East St. Louis, Illinois

JANE MCFARLAND
St. Louis, Missouri

GENEVIEVE HOGAN
St. Louis, Missouri

ROSEMARY MOERSCHEL, Treasurer
Jefferson City, Missouri

FLORENCE HERRE
St. Louis, Missouri

MARGARET CORRIGAN
Poplar Bluff, Missouri

MARY JANE BYRNE
St. Louis, Missouri

VICTORIA MORTLAND
Kirkwood, Missouri

REGINA MADDEN
St. Louis, Missouri

MARY VIRGINIA CASEY
Breese, Illinois

MARTHA BAECHLE
Mercedes, Texas

ISABEL HOBAN
East St. Louis, Illinois

FLORENCE SCHUCHART
Pacific, Missouri

MARTHA CANTALIN
St. Louis, Missouri

VIRGINIA HERROD
Webster Groves, Missouri

Lawetannum



SOPHOMORES



Betty Buddy, Evelyn Thornton, Jean Gillespie, Kathleen O'Rourke, Agnes Schmuke, Marcella Dailey, Agnes Borgel, Helen Day, Betty Lou Williams, Virginia Walsh, Eleanor Merkel, Rosemary Boehm, Margaret Wood, Dianne Pauley, Phyllis Weber, Dorothy McGillen, Nancy Bloomer, Myrle Maloney, Florence Martinek, Nellie Earl Hunter, Jean Crowley.

BETTY BUDDY
St. Louis, Missouri

HELEN DAY
Hamburg, Illinois

PHYLLIS WEBER
Olney, Illinois

EVELYN THORNTON
Richmond Heights, Missouri

BETTY LOU WILLIAMS
Sterling, Illinois

DOROTHY MCGILLEN
Chicago, Illinois

JEAN GILLESPIE
Kirkwood, Missouri

VIRGINIA WALSH
St. Louis, Missouri

NANCY BLOOMER
Shreveport, Louisiana

KATHLEEN O'ROURKE
Webster Groves, Missouri

ELEANOR MERKEL
St. Louis, Missouri

MYRLE MALONEY
St. Louis, Missouri

AGNES SCHMUKE
Jackson, Missouri

ROSEMARY BOEHM
St. Louis, Missouri

FLORENCE MARTINEK
St. Louis, Missouri

MARCELLA DAILEY
Eureka, Missouri

MARGARET WOOD
Webster Groves, Missouri

NELLIE EARL HUNTER
Cassville, Missouri

AGNES BORGEL
St. Louis, Missouri

DIANNE PAULEY
St. Louis, Missouri

JEAN CROWLEY
St. Louis, Missouri

The Nineteen Thirty Seven

FRESHMEN



Mary L. Hyde, Mary M. Ritter, Idella Smith, Betty Boneau, Barbara McCord, Florence Baxter, Phyllis Powell, Mary Frances Knoedelseder, Jane Bick, Patricia Higgins, Mary R. Perkinson, Patricia Costello, Josephine Raftery, Angela DeVoto, Virginia Fahoner, Mary Jane Marstall, Marjorie McDonald, Rosemary Kochner, Mary M. Koenitz, Elsie Schrader, Mary Catherine Opitz, Suzanne Weber, Margaret Dooling, Melba Jurgensmeyer, Virginia Leicht, Frances Rothermick, Mary J. Houlihan, Marie Rengel, Frances Pesnelle, Mary Galbraith, Helen Graham, Dorothy Ghio.

MARY LOUISE HYDE, President
St. Louis, Missouri

JANE BICK
St. Louis, Missouri

MARJORIE McDONALD
Louisville, Kentucky

VIRGINIA LEICHT
St. Louis, Missouri

MARY MARTHA RITTER, Vice-President
Louisville, Kentucky

PATRICIA HIGGINS
Webster Groves, Missouri

ROSEMARY KOCHNER
St. Louis, Missouri

FRANCES ROTHERMICK
Ferguson, Missouri

IDELLA SMITH
Union City, New Jersey

MARY RITA PERKINSON
St. Louis, Missouri

MARY MARGARET KOENITZ
St. Louis, Missouri

MARY JANE HOULIHAN
St. Louis, Missouri

BETTY BONEAU
St. Louis, Missouri

PATRICIA COSTELLO
St. Louis, Missouri

ELSIE SCHRADER
Louisville, Kentucky

MARIE RENGEL
St. Louis, Missouri

BARBARA McCORD
St. Louis, Missouri

JOSEPHINE RAFTERY
St. Louis, Missouri

MARY CATHERINE OPITZ
Anthony, New Mexico

FRANCES PESNELLE
St. Louis, Missouri

FLORENCE BAXTER
Brentwood, Missouri

ANGELA DEVOTO
Normandy, Missouri

SUZANNE WEBER
Olney, Illinois

MARY GALBRAITH
Anniston, Alabama

PHYLLIS POWELL
Kirkwood, Missouri

VIRGINIA FAHONER
East St. Louis, Illinois

MARGARET DOOLING
Webster Groves, Missouri

HELEN GRAHAM
St. Louis, Missouri

MARY FRANCES KNOEDELSEDER
St. Louis, Missouri

MARY JANE MARSTALL
Henderson, Kentucky

MELBA JURGENSMAYER
Webster Groves, Missouri

DOROTHY GHIO
St. Louis, Missouri

Cawtatamum



FRESHMEN

Virginia Dolan, Betty Schweers, Mary Rosalie Sheridan, Loretto Kegriss, Virginia Morrissey, Dorothy McKinlay, Mary Lamping, Marie Kaestner, Mildred Marstall, Virginia Ann Driscoll, Katherine Weber, Elizabeth Pollmann, Elizabeth Tyne, Geraldine Macauley, Ann Ritch, Mildred Daniels, Mary Elizabeth Hoffmeister, Nancy Stiles, Jane Fitzgerald, Mary Edna Kane, Roberta Irwin, Mildred Peters, Helen Roche, Marian Ware, Emily Jane Fisk, Beatrice Perez, Loretta Corbett, Mary Courtney Jones, Marjorie Belt, Patricia Gallagher, Clara Schmit.

VIRGINIA DOLAN
St. Louis, Missouri

MILDRED MARSTALL
Henderson, Kentucky

MARY ELIZABETH HOFFMEISTER
St. Louis, Missouri

EMILY JANE FISK
Carlyle, Illinois

BETTY SCHWEERS
Little Silver, New Jersey

VIRGINIA ANN DRISCOLL
El Paso, Texas

NANCY STILES
Bardstown, Kentucky

BEATRICE PEREZ
Kirkwood, Missouri

MARY ROSALIE SHERIDAN
St. Louis, Missouri

KATHERINE WEBER
Olney, Illinois

JANE FITZGERALD
St. Louis, Missouri

LORETTO CORBETT
St. Louis, Missouri

LORETTO KEGRIS
Warren, Arizona

ELIZABETH POLLMANN
St. Louis, Missouri

MARY EDNA KANE
Mobile, Alabama

MARY COURTNEY JONES
Clanton, Alabama

VIRGINIA MORRISSEY
Colorado Springs, Colorado

ELIZABETH TYNE
Rock Falls, Illinois

ROBERTA IRWIN
Summitville, Ohio

MARJORIE BELT
Webster Groves, Missouri

DOROTHY MCKINLAY
Webster Groves, Missouri

GERALDINE MACAULEY
St. Louis, Missouri

MILDRED PETERS
Florissant, Missouri

MARY LAMPING
University City, Missouri

ANN RITCH
St. Louis, Missouri

HELEN ROCHE
East St. Louis, Illinois

PATRICIA GALLAGHER
St. Louis, Missouri

MARIE KAESTNER
Overland, Missouri

MILDRED DANIELS
Santa Fe, New Mexico

MARIAN WARE
St. Louis, Missouri

CLARA SCHMIT
Castlewood, North Dakota

Activities

It could never be said that a Webster student forgot the old saying, "All work and no play makes for a dull day." Play is an important item in the activities of the school. This idea is stretched to its fullest length, including dancing, acting, dining, and promenading. Fun and amusement are around every corner and neither is ever rejected.

Too active? Do we think so? It would never do to put aside any of these pleasures. Work may be incorporated in the planning of the affairs, but it is always enjoyable and soon overlooked.



The Nineteen Thirty Seven

VODVIL

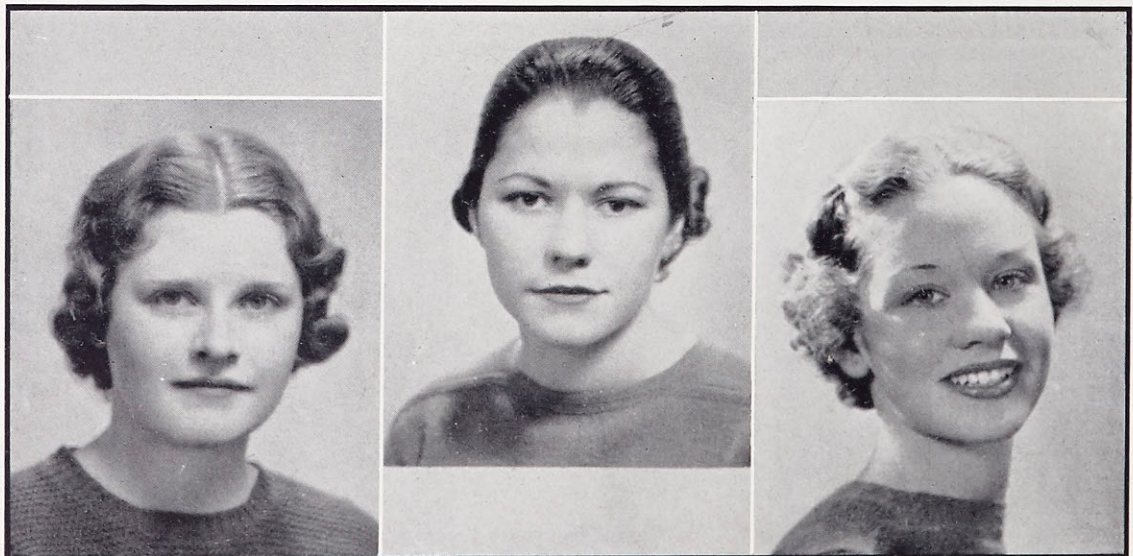
The Webster students went nautical this year and took their audiences for a cruise "Aboard the Queen Mary" in the College Little Theater. As usual the production was an all student activity. The numbers were the original work of the students.

The Goon Girls mixed up their ships, but they and the Sea Hag stole the show as they "trucked hither and yon." The Choral Club received much applause doing the salon scene from "Roberta". Ginger Rogers and Fred Astaire tapped their way to success. There was an exquisite masquerade waltz presenting many pretty pictures. The fat "numbaks" in "Heave Ho M'Lassies" with their reducing antics were unique. The falsetto Rigoletto chorus screeched their way to fame. The Dionne quintuplets were finally discovered by the Captain as the mischievous stowaways, and as they danced, they brought to the forward deck passengers en masse, just in time to march down the gangplank to the tune of "Anchors Away".

G. Hayden
Business Manager

V. Carroll
Chairman

L. O'Connor
Dancing Director



Cawtatamum



FALL DANCE

While brown autumn haunted the campus, Webster College went a dancing. The Ivory Room of Hotel Jefferson, from nine to twelve on the memorable night of November seventeenth, supplied the elegance that must accompany the opening of a season of gaiety.

The Fall Dance, made beautiful by the interest of the Student Government Board, was an evening for forgetting. Freshmen forgot the trials of a greenie; sophomores forgot their dignity; juniors forgot the impending Christmas Banquet; and seniors forgot their theses. Gay again, dressed informally for the occasion, girls and boys wheeled and turned, and dipped and glided in tune with the music of Johnny Kamp's orchestra. The Fall Dance! Everybody goes! It marks the beginning. And everybody wants to begin. And the correct way is the laughing way. And the Fall Dance is a great big autumn laugh of joy that the gods have cast to the lot of Webster College.



The Nineteen Thirty Seven



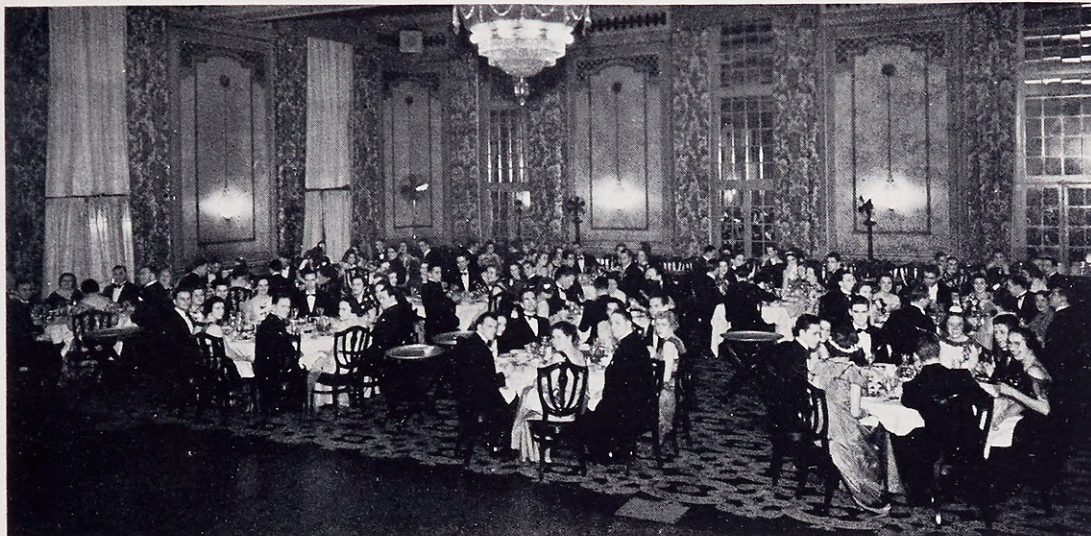
CHRISTMAS BANQUET

The Christmas Banquet is by faculty and student acclaim one of the most charming occasions on Webster's calendar. The cafeteria, scene of the dinner, and the Pink Room were gaily decorated, displaying the Christmas spirit. The gala setting suited the festive mood of the diners, guests of Mother Edwarda and the Junior Class.

Dinner served, Dr. Donovan extended his Christmas greetings and presented class pins to the seniors. The 1937 pin bears a ruby which, according to tradition, will be ceded to the class of 1941.

After the presentation the guests gathered in the Pink Room to await the coming of Santa Claus. Soon he arrived with a sleigh full of gifts for the faculty and his new friends, the freshmen. The jolly old man was feted with song and dance. Then hopping on to his sleigh Santa dashed off with "A Merry Christmas to all and to all a good-night!"

Lawetamum



PROM

The annual Senior Promenade was held as a formal dinner dance on January twenty-ninth at the Missouri Athletic Association. The program began at eight and lasted until twelve to the accompaniment of Herb Maller's Orchestra.

Every year the Prom is given under the auspices of the Senior Class, which is responsible for the entire arrangement of the affair. This is the only school dance to which alumnae of Webster are invited, and it is considered the loveliest social function of the school year.

The class of '37 followed the time-honored traditions always associated with Webster's Prom but introduced a new feature—souvenirs for the seniors and their escorts.

With the strains of "Home Sweet Home," the Prom '37 ended. Each senior was saddened as she danced away the last Prom of her college days, but was happy that it had been a successful one.

The Nineteen Thirty Seven

MARIAN DAY

Long, flowing, graceful gowns do not characterize the annual Sodality Marian Day. All sophistication and vanity are set aside and simplicity, sweet and serene, reigns while Sodalists honor the loveliest, noblest, truest Queen of the May, Mary, Mother of God and man. Garbed in academic cap and gown, Sodalists walk around the College campus singing hymns to their Queen and carrying white roses.

The procession terminates in the Chapel where Mary's children lay their flowers at her feet. The retiring Prefect has the honor of crowning Mary. Then she places the Sodality medal on the shoulders of the new Prefect, who kneels before the altar and makes her Act of Consecration. The other Sodalists take up the pledge and consecrate themselves unreservedly to Mary, Queen of Heaven and Earth. The ceremony closes with solemn Benediction when Christ the King blesses Webster Sodalists as He blesses all who love and follow His Mother.



Lawetatum



ORCHESTRA

A bigger and better orchestra! That's Webster's aim. Due to Sister Mary Joecile's untiring and splendid direction, and the interest of the student members of this organization, the orchestra is growing each year.

In addition to appearing at each Monday assembly and accepting outside engagements, the orchestra plays for the Annual Lions' Club Banquet held at the College, several dramatic productions, the Maryville-Webster game, and the Conservatory recitals. This year the orchestra climaxed its performances by assisting the Choral Club in its presentation of Strauss' lilting and beautiful "Tale from the Vienna Woods."

The personnel includes:

First Violin:

Ruth Hauser
Kitty Weber
Marian Croghan
Elsie Schrader
Elizabeth Roehling

Violoncello:

Dorothy McKinlay

Trumpet:

Florence Martinek
Helen Roche
Mary Edna Kane

Marimba:

Betty Lou Williams

Piano:

Virginia Ann Driscoll

Second Violin:

Virginia Morrissey
Bernice Schleicher
Marion Rogles
Dorothy McKinlay
Mary Loretta Kegriss

Clarinet:

Mary Frances Heidtkamp

Bass Violin:

Betty Lou Williams
Mary Jane Dorsey

Drums:

Mary Courtney Jones

Conductor:

Ruth Guido Garizio



The Nineteen Thirty Seven



The May Court

MAY DAY

May Day annually climaxes, most fittingly, the student activities at Webster. It is a most elaborate and impressive ceremony and is held on the campus south of the Administration building, under the Queen's tree.

Last year on Friday afternoon, May twenty-fourth, Mary Frances Higgins, a member of the Junior Class, was crowned Queen of Love and Beauty, on this charming occasion.

The Senior Class, carrying the traditional daisy chain, formed a guard of honor along the pathway down which the Queen and her Court passed. The page first announced the retiring Queen, Ann Heald; then came the maids representing the various classes and proceeding in single file to the throne; then the lady of the hour, the Queen, who most gracefully approached the throne and was crowned by the retiring Queen.

Courtetannum



Approaching the Throne

MAY DAY

Then followed the royal entertainment, with the May Pole dancers, a solo ballet dance, and a pantomime tin-soldier duet. Finally the reigning Queen and her court retired amid the fading evening shadows, and another lovely May Day came to a fitting close.

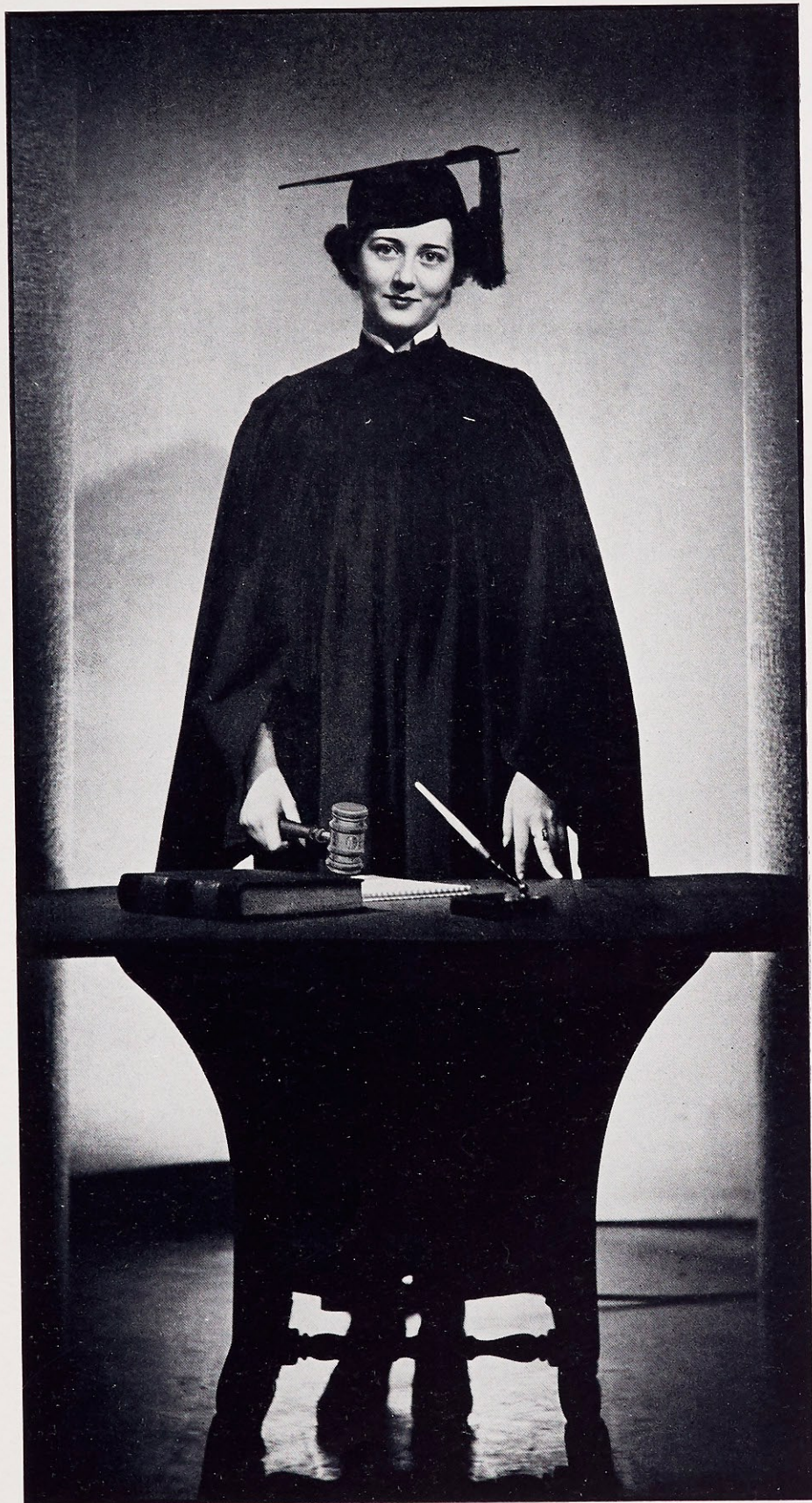
The May Day Court of 1936

Queen	- - - - -	Mary Frances Higgins
Retiring Queen	- - -	Ann Heald
Senior Maids	- - -	{ Ruth Fabick Doris Bick Carol Foley
Junior Maids	- - -	{ Betty Henry Dolores Becker
Sophomore Maids	- -	{ Ruth Savage Veronica Coad
Freshman Maid	- - -	Agnes Schmuke

Organizations

What is a school without clubs? This is a question Webster College could not answer, but one it would illustrate if its organizations should cease. Made very interesting by individual programs, each club represents a department of the school. These organizations hold the interest of every student, and each does her part to continue forward movement.

Which associations are the leaders of our school? What do they do? You will find activities and progress among the following organized groups.



The Nineteen Thirty Seven

STUDENT GOVERNMENT ASSOCIATION

During the past year, in order to achieve more effectively the purposes of the Student Association, partial Student Government was introduced. After being passed by the faculty, the project was accepted by a vote of the students to operate tentatively for one year. This organization functions through the Student Government Board, an executive, legislative, and judiciary body comprising the Dean of Women, Dean of Studies, and twelve students elected from the four classes.

The Board elected each year in May, is responsible for the discipline and the social life of the College. Its activities begin during the summer months with preparations for the welcoming of the new students. During the school year it finances the various extra-curricular activities and sponsors numerous social affairs.

The Board has drawn the new Student Government Constitution; it sponsored a five-day Educational Tour to Washington, D. C., and edited a Campus Guide. It also inaugurated a Personnel Program.

A. L. Smith
President

J. Pickel
Vice-President

M. Rogles
Secretary

J. Henning
Treasurer

B. Henry

L. Geis

M. Hayes, J. O'Donnell, R. Savage, B. Buddy, E. Merkel, M. Ware





SODALITY

The Sodality of Our Lady is the organization that attempts to develop the spiritual side of the students, making them personally holy and actively Catholic. To do this the Sodality maintains seven committees that offer a variety of programs. It was through the efforts of the Social Problems Committee that a cooperative store was opened at Webster this year.

The Sodality was privileged to hear such speakers as Rev. James E. Cahill, C. M., Sodality Director at Webster, Rev. William Markoe, S. J., Rev. Father Valentine, C. P., Rev. J. Roger Lyons, S. J., and Rev. Daniel A. Lord, S. J.

The Webster College Sodality had the honor for the third consecutive year of having one of its girls elected as Vice-President of the St. Louis College Sodality Union. With the corporate colleges, schools of nursing, and St. Louis University, Webster helped to make a success of Union activities, by sponsoring a Monthly Mass for Spain and Mexico, a convention on cooperatives, an all-day May celebration, and a Sodality dance at the Hotel Jefferson.

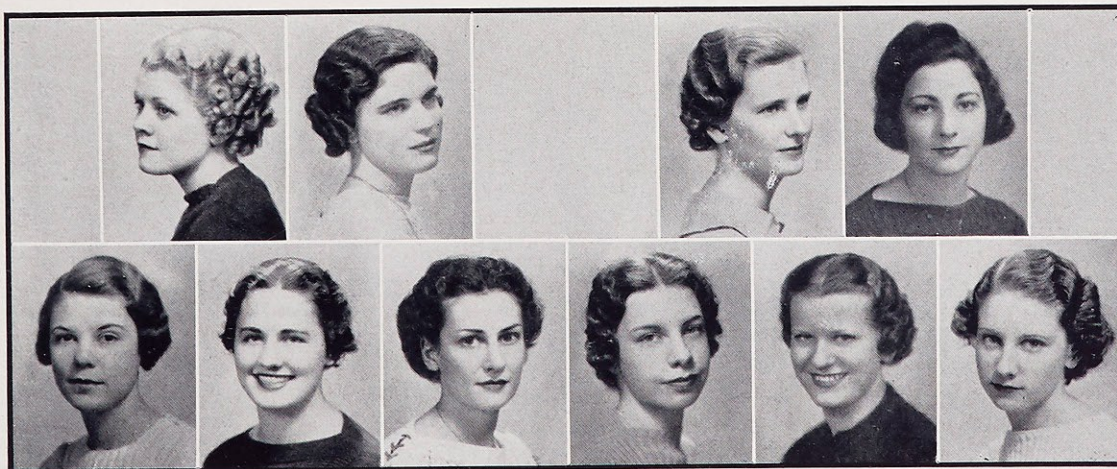
B. Henry
Prefect

V. Herre
Vice-Prefect

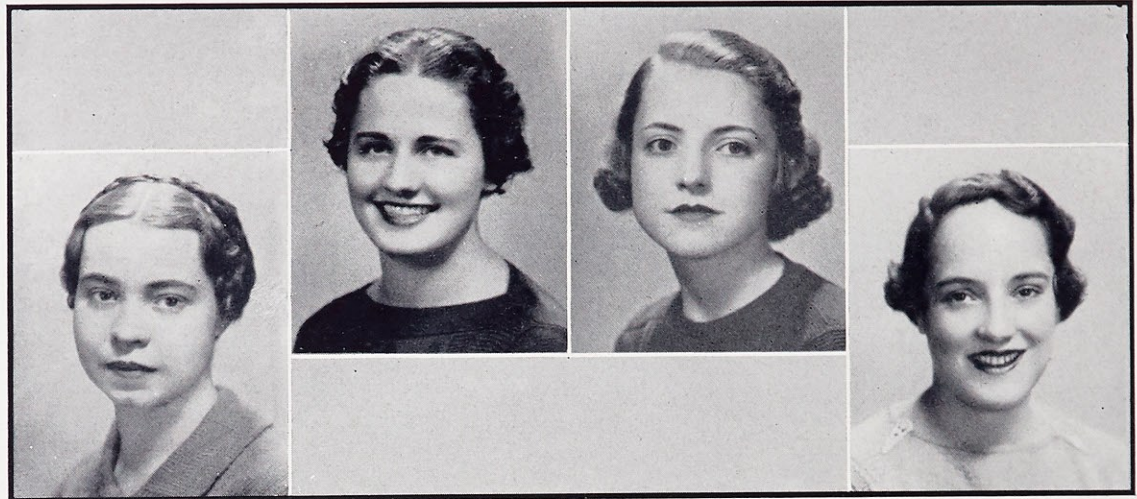
R. Godfrey
Secretary

V. Vermeersch
Treasurer

A. L. Smith, D. Becker, A. Huger, P. Gamp, F. Martinek, M. C. Jones



The Nineteen Thirty Seven



M. Grummel
Secretary

D. Becker
President

M. Herr
Vice-President

B. L. Williams
Treasurer

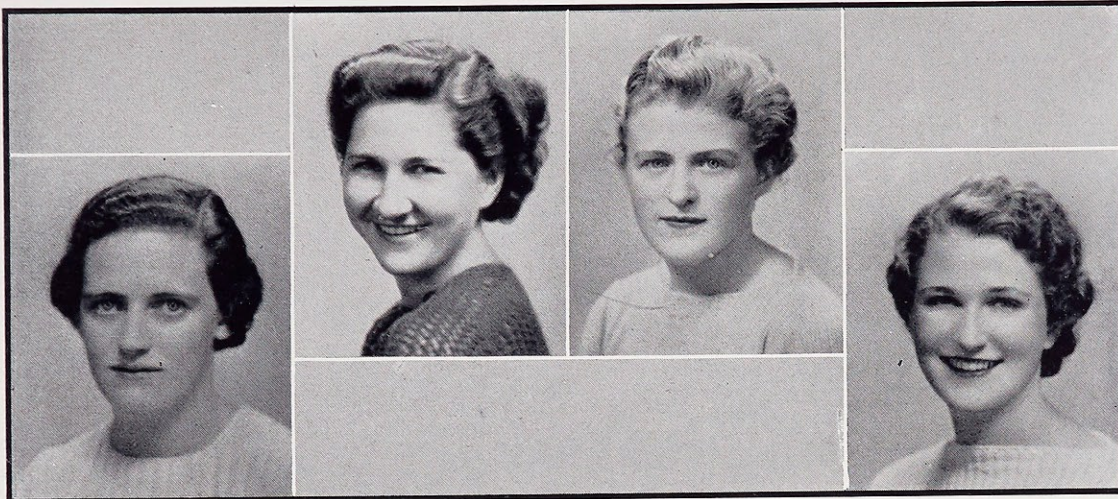
CATHOLIC STUDENTS' MISSION CRUSADE

The Nancy Havern Unit of the Catholic Students' Mission Crusade is a very important unit of activity within the school, having a membership of almost the entire student body. Although coordinated with the Sodality of Our Lady, it is a very definite organization with officers and purposes all its own.

The Unit promotes spiritual, financial, and educational activities among its members for the benefit of Home as well as Foreign Missions. Among its beneficiaries for this year alone are the Loretto Sisters in Shanghai and Han Yang, the Medical Missions, the Catholic University of Peking, Father Tim Dempsey's Charities, THE CATHOLIC WORKER, and many others.

Its activities this year included a Food Drive for the Poor, a contest for the best possible Mission Play, written and produced by students, and Catechetical instructions to the young negro children of various parishes in St. Louis and vicinity.

Cantatorium



C. Phelan
Secretary

G. Wencker
President

M. R. Hughes
Vice-President

V. Coad
Treasurer

ATHLETIC ASSOCIATION

The Athletic Association of Webster College was organized in 1920, and has since developed into one of the major organizations of the school.

In the fall, it sponsors the Volleyball Tournament. Basketball, the school's major sport, follows immediately and continues through the winter. In the spring, Baseball, Tennis, and Track are the principal athletic activities. The year is brought to a close by Field Day and the Athletic Banquet. At the latter the year's outstanding class and individuals are presented with suitable awards.

This year the Association introduced the High School Play Day for all Catholic girls' High Schools of St. Louis to replace the usual Track Meet. The purpose of the Play Day is to create among the students a friendly feeling for one another and also for Webster College.

The Nineteen Thirty Seven



V. Carroll
P. Gamp
V. Mortland
D. Henderson
M. McDonald
F. Pesnelle
J. Pickel

R. Savage
M. Fink
E. Roehling
V. Nash
B. L. Williams
V. Vermeersch

V. McCormick
F. Delmore
R. Boehm
B. Schweers
K. Weber
P. Chamberlain
R. Noland

LORETTO PLAYERS

THE Loretto Players presented this year Shakespeare's delicious comedy, "Twelfth Night." The cast, under the direction of Mrs. Anna McClain Sankey, took over the business of production which includes lighting, scenery, costumes, makeup, properties and programs, tickets and advertising. For the benefit of the training a double cast was used in the major roles.

The Loretto Players are divided into two groups. Those new in the field must work for one year, to learn the details of stage production and artistic skill. At the end of the season students still interested are put into minor parts in the annual Shakespearean production. This enables them to take a more important characterization with greater ease and mastery the following year. The organization finds this method is successful.

This year the Speech majors produced, as part of their training, three one-act original plays, written by the students of Webster College.



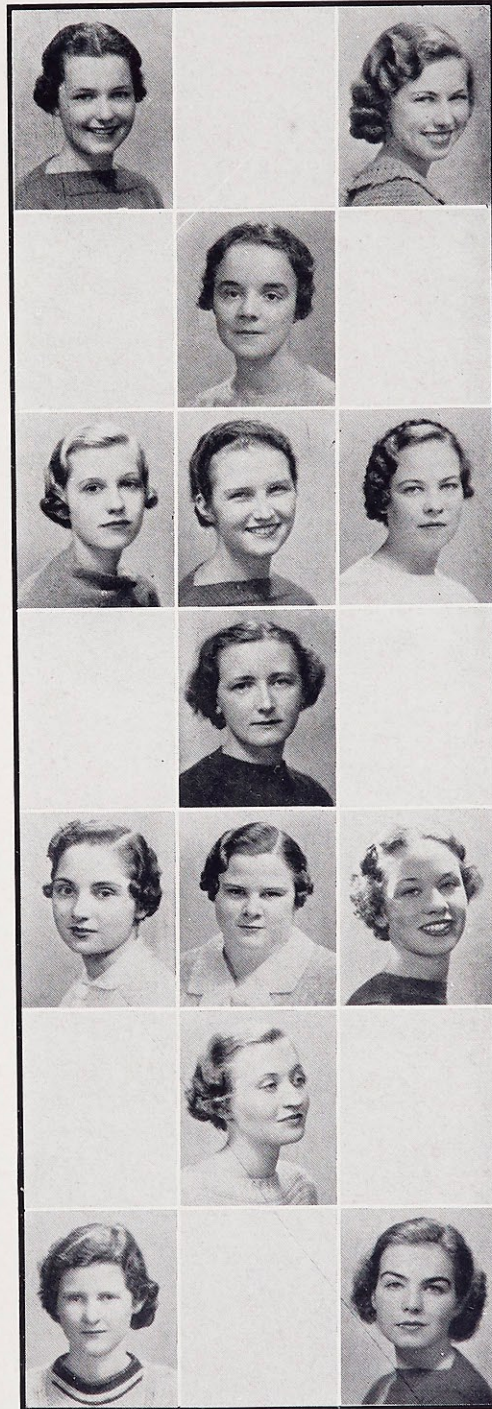
MUSIC GUILD

THE theme of this year's Guild composition may be interpreted as a study of impressionistic music, concentrated upon the composer DeBussy. Of his style of music DeBussy explains, "I prefer light, delicate effects in my music. Pianissimo-delicate-win the emotion by suggestion. Reach the mind through the imagination! Take fleeting impressions—not the obvious."

Anastasia Schlueter and Ruth Guido participated in the Student Symphony Contest. Miss Schlueter won the honor of first place for the Piano department in the Junior Symphony League Contest.

Ruth Guido, Lenore O'Connor, Madelyn Whitener, and Dorothy Keeley contributed selections to an evening program, with their Junior Recital. Anastasia Schlueter and Mary Evelyn Sherwin presented their Senior Recitals.

Other interesting work included two Assembly programs, and several radio programs on Station KMOX by Ruth Guido and Anastasia Schlueter; the original composition program, constructed of piano, violin, and vocal compositions; and the final appearance of the music students in a program of two piano selections.



A. Schlueter President	R. Guido Secretary-Treasurer	M. E. Sherwin Vice-President
R. Noland	M. Hayes	T. Dee
M. Whitener	M. Niedzialkowski	L. O'Connor
V. A. Driscoll	D. Keeley	B. Schweers
	R. Kochner	

The Nineteen Thirty Seven

THE WEB

The year 1937 marks the seventeenth birthday of the semi-monthly newspaper of Webster College, THE WEB. In its pioneer days this five-column newspaper was but a two-column, mimeographed sheet called LISTEN. Today THE WEB bears the seal of the National Catholic Press Association and is circulated, through its exchanges, in seventy or more Catholic Colleges throughout the United States.

Scoops on school events, secured through splendid cooperation of the faculty with the staff, succeeded in adding spice to the ordinary run of news articles.

For the first time in the history of its existence THE WEB put to press a six-page edition. This marvel of the age appeared as the Christmas issue.

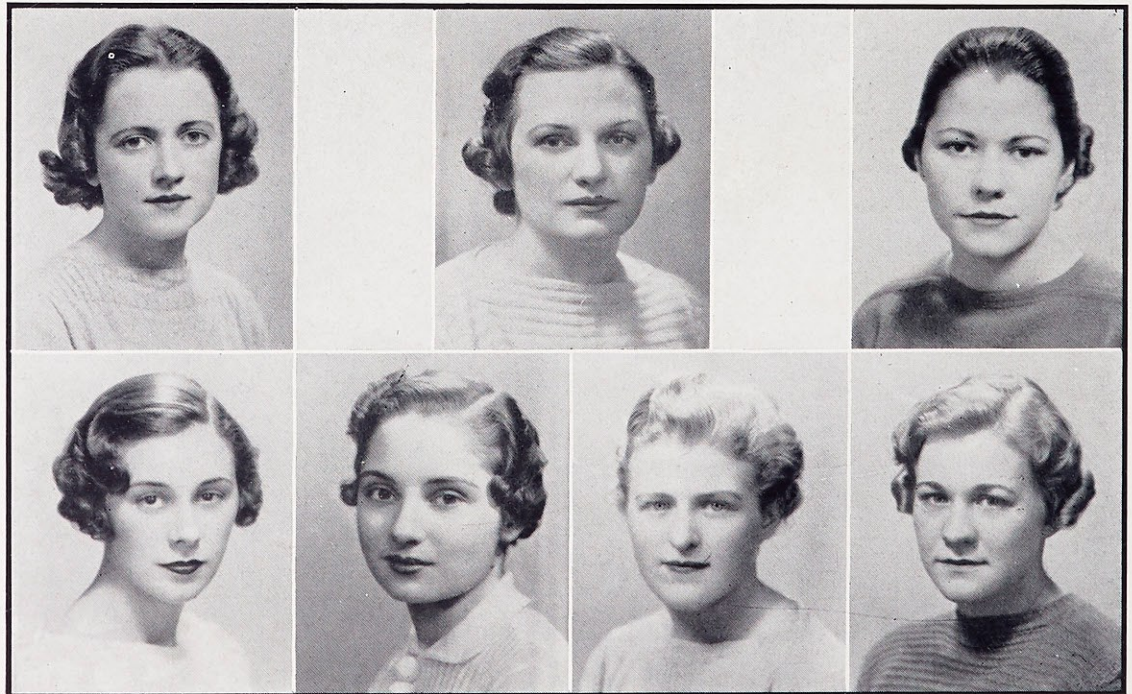
The journalistic improvements and the recognitions received by the last two editors of THE WEB may be attributed to the competent guidance of Mr. Hamilton Thornton of the GLOBE-DEMOCRAT, instructor of journalism at Webster College.

J. Devaney
Editor

M. Rogles
Business Manager

V. Carroll
Assistant Editor

J. Henning, M. Whitener, M. R. Hughes, B. Vette



Loretta



LORETTINE

The LORETTINE, the oldest student publication at Webster College, is a literary quarterly. In the first student issue of the year—a Home Number by the way—"The Purpose and Need" of a Catholic Youth Organization is demonstrated. Thomas More, peace, negroes, and Scarlett O'Hara are discussed in the mid-semester issue. The summer number, appearing twelve months after the death of Chesterton, is dedicated to him. It views him from the angles of art and philosophy.

A new and popular feature of the LORETTINE, this year, is its Student Directory in the last pages. Here are listed the officers of clubs and participants in important activities.

The LORETTINE has endeavored to widen its scope, to display its interest in school and world affairs, and to link present and past. Through the girls who reveal a knack for writing, the LORETTINE has attempted to express a few of the ideas and ideals that prevail at Webster College.

R. O'Donnell
Editor

G. Wencker
Business Manager

M. Grummel

J. Devaney

M. Neidziakowski, D. Knisley, M. R. Hughes, M. Whitener



The Nineteen Thirty Seven



V. Coad
Editor-in-Chief

C. Klorer
Associate Editor

B. Vette
Advertising Manager

M. F. Walsh
Business Manager

J. Pickel
Patrons

M. Fink
Art Editor

LAURETANUM

A YEARBOOK in the making has been on the minds of each member of the Lauretanium Staff during the past year. Each one could vaguely see the finished product. It seemed as though the editing time would never come. Hard work was fastened upon everyone, and many long and tedious hours were spent in the publication office. As time grew shorter, the dead line hopped upon us.

It is now that we have the opportunity to present our product to you. We are proud of it and we hope you feel the same. Our efforts were directed toward editing a yearbook which would meet with the approval of the entire student body.

The Lauretanium Staff of 1937 hopes that it has not failed in its purpose and that this book will form a part of the students' college treasures.



SECTION CLUBS

THE Section Clubs of Webster College were organized in 1933 by Dr. George F. Donovan. Their purpose is to increase the enrollment of the college by personally contacting high school seniors, by sending them THE WEB.

The Section Clubs enable the girls from a certain section of the country to get together and become acquainted, and have also proved to be a bond between the alumnae and the students.

Each club covers a certain geographical area depending upon the localities from which the girls come. There are six clubs which represent the following states: Illinois, Missouri, New Mexico, Ohio, Texas, Colorado, California, Louisiana, North Dakota, Alabama, Kentucky, and New York.

This year the Section Clubs pledged themselves to help the Loretto Foundation in conducting a raffle. The raffle was to provide funds for the establishment of a permanent field secretary so the clubs could further their purpose of increasing the enrollment of Webster College.



M. Whitener
President of Missouri Club

L. Geis
President of
Northern Illinois Club

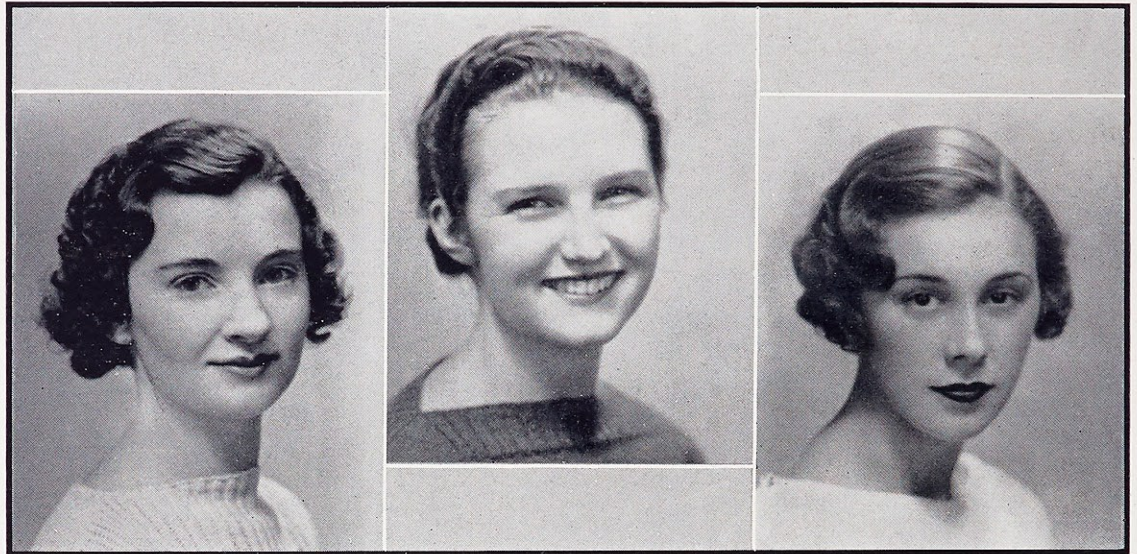
M. McBride,
President of Western Club

G. Wencker
President of St. Louis Club

M. R. Hughes
President of Southern Club

D. Keeley
President of
Southern Illinois Club

The Nineteen Thirty Seven



J. Pickel

M. Hayes
Chairman

J. Henning

PERSONNEL PROGRAM

The Student Government Board Project for the scholastic year 1936-1937 was the establishment of a Personnel Program including a study of personality and a survey of the occupational fields open to women, with a view toward vocational guidance.

The first semester was devoted to a profound self-analysis. We considered our physical, mental, and social traits and our ideals, and the methods of improving ourselves in each of these fields. The program consisted of talks and demonstrations given by the students. Each class formed a separate unit for sectional meetings and three times during the semester the entire student body met in a general assembly.

The program for the second semester consisted of a study of the various occupational fields open to women. We discussed the languages, the physical and social sciences, and philosophy, and gave consideration to the vocational openings in each field. Several general assemblies presented guest speakers.

Lawetamm



First Row—D. Knisley, D. Volz, C. Phelan, President; R. Stinson, V. Herre, E. Roehling.
Second Row—J. Crowley, P. Lynn, M. Cantalin, M. Godar, H. Graham, R. Irwin, M. Niedzialkowski.

THE WEBSTER COLLEGE LIBRARY CLUB

The Webster College Library Club was originated in 1935. Up to that time there had been no successful Library Staff. The club was originated for the purpose of aiding Sister Mary Joseph, the club's moderator.

The girls on the Staff are required to spend at least two hours a week in the library checking in and checking out books, learning to file cards and to shelve books. The girls while in the library are not only giving assistance but are also learning for themselves the usefulness of a library, its functions, and needs. The Library Staff has grown considerably during the past year now having about twenty-five members.

The officers for the club are two, President and Secretary-Treasurer. The former office being held by Catherine Phelan and the latter by Rheta Stinson.

The Nineteen Thirty Seven

CHEMISTRY CLUB

Sigma Phi Theta, more popularly termed the Chem Club, is composed of students who are interested in chemistry and who have completed one year of study in this subject. To increase the interest in chemistry and to give its members a more practical knowledge of what is being done in that field by modern chemists are the chief purposes of this club.

Business is carried on at regular monthly meetings. Among interesting activities were a supper party at which "chem" games were played and a trip to Anheuser-Busch Brewery.

A trip to Howard's Bend to study the part chemistry plays in the purification of our water ended up in a picnic at Corley's summer home. This was the final activity of the year, and all agreed it was a perfect ending of a successful year for the Chemistry Club.

First Row—V. Herre, J. McFarland, V. Walsh, M. Rogles, President; B. Schleicher, M. Cantalin, J. Crowley.
Second Row—A. Huger, E. Tyne, P. Weber, B. McCord, A. Schlueter, M. M. Ritter.
Third Row—B. Henry, M. F. Walsh, M. R. Hughes, M. Hayes, R. Noland, M. R. Sheridan, V. Coad.
Fourth Row—G. Wencker, C. Wells, F. Herre, F. Schuchart, F. Martinek, G. O'Rourke, J. Pickel, B. Buddy.





CHORAL CLUB

This year under the capable guidance of Sister Mary Paula the organization enjoyed a wider range of activities. In the annual Vod-Vil the club presented a colorful and musical scene from "Roberta". The Yuletide spirit was enlivened by selected groups of carolers who sang in Webster Groves, at the Coronado and Melbourne Hotels. Presentation of programs over radio stations KWK, KSD and WIL was a long-cherished dream now realized. At the closing concert of the conservatory the Choral Club, assisted by the orchestra, presented Strauss' "Tales from the Vienna Woods".

Besides its numerous musical programs the club enjoyed several social functions. A formal banquet for members and the alumnae was held May 12. Twice the club was hostess to the St. Louis University Glee Club.

First Row—M. E. Sherwin, P. Weber, R. Hoing, J. Fitzgerald, J. Stoddard, D. McKinlay.
 Second Row—M. Niedziakowski, D. Keeley, President, B. Schweers, D. Volz, D. Becker, M. Hayes, E. Roehling,
 M. M. Koenitz, A. Schlueter.
 Third Row—V. Vermeersch, R. Guido, M. Peters, F. Schuchart, M. J. Byrne, A. Borgel, E. Merkel, M. Corrigan,
 H. Roche.
 Fourth Row—H. Day, K. Weber, E. Schrader, M. McDonald.



The Nineteen Thirty Seven



First Row—E. Thornton, T. Buckler, President; R. Hoing, M. Corrigan, B. L. Williams.
Second Row—R. O'Donnell, R. Moller, E. Merkel, V. Herre, M. J. Byrne, M. Godar, P. Gamp.

CLASSICAL CLUB

The Classical Club, officially known as Sigma Epsilon Rho, is now in its ninth year and continues to fulfill the purpose for which it was formed, namely, to stimulate in the students an appreciation of Greek and Roman literature, daily life, customs, and government.

The Webster Classical Club is a unit of the St. Louis University Classical Club, which meets monthly at the University or at one of the corporate colleges. During the current semester, Webster had the pleasure of entertaining the joint group on February fourteenth.

In accordance with the vote of the members, the study plan of the club this year has been identical with that of the St. Louis University Classical Club; the general topic was "The Political Institutions of Greece and Rome." Thus an opportunity was offered at the monthly meetings for further research and discussion on the points of interest introduced at the general meetings.

Lawetamm



First Row—M. J. Houlihan, L. Corbett, E. Thornton, G. O'Rourke, President; M. Herr, M. E. Flynn, M. Cantalin,
J. Crowley, B. Perez.
Second Row—V. Fahoner, M. E. Hoffmeister, B. Schleicher, M. C. Jones, F. Delmore, T. Buckler, J. McFarland,
D. Henderson, N. E. Hunter, M. Wood, D. Ghio.
Third Row—P. Weber, N. Peters, F. Rothermich, V. Walsh, D. Rogles, B. L. Williams, M. V. Casey, N. Bloomer,
J. Gillespie.
Fourth Row—V. Vermeersch, F. Herre, E. Merkel, B. Schweers, M. M. Ritter, M. F. Knoedelseder, M. Corrigan,
F. Martinek, M. M. Koenitz, H. Roche, R. Hauser.
Fifth Row—R. Boehm, D. Pauley, F. Baxter, A. Huneke, K. O'Rourke, M. J. Byrne, E. Pollmann, G. Maccauley,
H. Day.
Sixth Row—M. R. Perkinson, H. Buckley, M. Rengel, V. Herre, M. J. Dorsey, M. L. Hyde, M. McGinn, B. Buddy,
R. Guido.

LE CERCLE FRANCAIS

Le Cercle Francais has become more active each year. Its purpose is to help those who are interested in supplementing their knowledge and practice of French by providing opportunities for this purpose outside of class. The only requisite for membership is an interest in French.

At the meetings, which are held every other week, talks are given on subjects pertinent to French customs, language, and people. Short plays are staged. Guest speakers address the club, two of the most successful this year being Mary and Therese Renard, the small nieces of Monsieur Bonnet.

The last social meeting of the year is devoted to a joint session with the St. Louis University French Club when M. Paul Barrette, adviser of the University Club, addresses the gathering. His subject this year was, "Paul Claudel, Dramatist." Entertainment is provided by the Webster Cercle, and supper is served after the program.

The Nineteen Thirty Seven

INTERNATIONAL RELATIONS CLUB

The International Relations Club has as its purpose the desire to stimulate an interest in history through the study of various books dealing with world-wide problems. The club was reorganized this year under the supervision of Doctor George Francis Donovan, director of the history department and moderator of the organization.

At the bi-monthly meetings the members reviewed books, donated by the Carnegie Endowment for International Peace, dealing with current problems in government and economics of all countries of the world. Membership is restricted to history majors.

The officers for the year included:

President, Dolores Becker
Vice-President, Evelyn Wasem
Secretary, Marion Lower
Treasurer, June Stoddard

First Row—R. Hoing, J. Stoddard, D. Becker, President; M. Lower, R. Stinson.
Second Row—J. Theobald, V. Nash, P. Lynn, G. Hayden, M. Niedzialkowski.





MATHEMATICS-PHYSICS CLUB

This club was founded in 1927 under the direction of Sister Borgia, who has continued to be its moderator. Its aims are to foster a greater love of the two sciences, and a deeper interest in them, and to give a knowledge of their cultural values. Membership in the club also gives the student training to think clearly and to express herself logically and precisely in presenting a problem, or a discussion of some scientific topic.

At the meetings, held on the second Monday of each month, a Physics paper and two Mathematics papers, or problems, are contributed by members of the club, and are followed by general discussion. Such subjects as "The Electron," "The Earth's Core," "The Social Qualities of Mathematics," and problems in algebra and trigonometry were presented during the year 1936-1937.

First Row—M. Grummel, M. R. Hughes, R. Godfrey, President; M. Hayes, A. Huger.
 Second Row—C. Wells, D. Rogles, G. O'Rourke, V. Walsh, V. Coad, F. Herre, D. McKinlay, J. Pickel, M. Rogles,
 M. F. Walsh.



The Nineteen Thirty Seven



First Row—D. McKinlay, M. Herr, D. Rogles, M. McBride, M. R. Hughes, President; B. Vette, R. O'Donnell.
Second Row—J. Theobald, H. Day, A. Borgel, T. Buckler, H. Buckley, P. Gamp, J. Henning, J. Stoddard, M. Grummel.

PRESS CLUB

The Webster College Press Club had its origin in 1932 under the initiative of Dr. Donovan. The club was organized with a twofold purpose: to publicize Webster College in the United States and foreign countries, and to promote Catholic Action.

Membership in the club is limited to a representative group from each class. Officers and members are elected by the club at the last meeting of every year.

Bi-monthly meetings are held. The latter part of each meeting is devoted to the writing of news articles which are sent to the respective home papers and returned to the club for the scrapbook. The club has set a goal of one hundred articles for the year. Approximately one hundred and fifty were sent out, and several have been published in papers never before reached.

The Student Government Board gave the club an allotment to care for the cost of stationery and postage.

Cawtatamum



First Row—M. Herr, R. O'Donnell, M. McBride, M. Whitener, J. Devaney.
Second Row—A. Huneke, M. J. Dorsey, C. Wells, J. Henning.

SHORT STORY CLUB

The Short Story Club, organized in May, 1932, has devoted the time of the bi-monthly meetings to the reading and criticism of stories written by its members. Sister Mary Louise, of the English Department, is moderator of the society.

During the summer and occasionally during the school year, there are informal supper parties for present and former members. There is usually a guest of honor at each party. Reverend Joseph F. Thorning, S. J., was the guest at the December meeting and Reverend Joseph McIntyre, C. M., of THE VINCENTIAN at the April meeting.

Since the members are eager to secure publication of their work, they entered this year contests sponsored by THE QUEEN'S WORK, STORY, Kappa Gamma Pi, the national Catholic honor society, and the Pan-Hellenic House. The ability of the members in other writing fields besides the short story is evidenced by the election of Rosemary O'Donnell, president of the club, to the position of Ivy Poet.

The Nineteen Thirty Seven

SPANISH CLUB

El Centro Hispanoamericano is the Spanish Club of Webster College. The meetings are held in the Spanish room bi-monthly. Each year some study is made pertaining to Spain or Mexico.

The first semester of this year the Spanish Club made a study of "Conditions in Mexico Today." Reports were given and followed by discussions from the floor.

A new project was taken up the second semester. One meeting a month was devoted to the learning of Spanish songs, old and new. The other meeting was spent playing Spanish card games and lotto. These games were both enjoyable and profitable, for they acted as vocabulary builders.

The last meeting of the year was in the form of a supper. Spanish food, songs, games, and favors lent color to this affair.

First Row—C. Klorer, E. Roehling, L. Kegriz, M. McBride, President; D. Ryan, D. McGillen.
Second Row—B. Henry, M. Dailey, J. Devaney, J. Theobald, M. Daniels.
Third Row—M. Niedzialkowski, P. Lynn, B. McCord, R. Madden, E. Tyne.
Fourth Row—R. Moller, A. Borgel, D. Becker, C. Phelan, L. Geis, J. Henning.



Lantern



POETRY CLUB

This year marks the tenth anniversary of the organization of the Poetry Club. Being formed in 1927 it holds the distinction of being the oldest club in Webster College.

A very interesting study of Dante's DIVINE COMEDY was made during the year. Part of each meeting is devoted to a reading of the original verse contributions which each member is required to make. Some of these verses were published in the college literary publication, the LORETTINE.

Social activities of the club include two major events. The first of these is the dinner which is given in honor of the members admitted into the club at the beginning of the second semester. To conclude the yearly activities a picnic is given which is attended by all members, including the alumnae.

First Row—M. McBride, G. O'Rourke, M. Herr, M. R. Hughes, B. Henry, President; M. Whitener.
Second Row—M. J. Dorsey, R. O'Donnell, M. Hayes, V. Vermeersch, A. Huneke, G. Wencker.



Sports

Bring on the sports! Keep the interest keen and no one could stop a Webster sports lover. The Athletic Department is one of the most important divisions of the school. To feel free to idle time in the gym and on the campus, creeps into the veins of a number of the students. It is not work to appear in gym class, as in other classes. Physical development is most necessary for everyone.

Along with the bringing of the sports comes the bringing of competition. All play is fair and is deeply encouraged.



The Nineteen Thirty Seven



First Row—R. Savage, T. Buckler, Captain; R. Hoing.
Second Row—V. Coad, J. Pickel, C. Klorer, B. Vette, M. F. Walsh.

VOLLEY-BALL

With volley-ball begins the sports year at Webster. The girls turn out with plenty of pep and enthusiasm for this popular game. Fingers fairly itch to get the ball and start hitting it back and forth across the net.

Practices are hilarious with much joking and friendly competition. Harmless accidents contribute to the fun of the game. However, when November comes around a seriousness begins to creep in, for the inter-class tournament is fast approaching. Now each class practices strenuously because to win this tournament is a much coveted honor.

This year the freshmen and sophomores joined forces to play the juniors on the nineteenth of November. In spite of the strong competition the upper-class students were successful in defeating the freshman-sophomore team. The juniors then turned their efforts toward overcoming the seniors. They won from their senior opponents in a game played on November twenty-third by a score of 18 to 15.



Standing—C. Foley, V. Herrod, D. Hensler, D. Rogles, M. V. Casey.
Seated—M. Dailey, D. McGillen, E. J. Fisk, Captain; E. Thornton, C. Day.

BASEBALL

Baseball, the national pastime, is also one of Webster's favorite sports. As soon as the cold winds of March have passed, one can hear the cry, "batter up," on the lower campus. As played here at Webster, baseball becomes known as softball. However, there is nothing soft about the way we play it. Many aspiring newcomers, eager to show their ability, leave practice with bent fingers and smarting knees.

Last year the weather was ideal and all the teams had an opportunity to get in fine form. The freshman team, smarting from defeat in the other sports, came out in front and showed the school what it could do. Competition was keen, for they were determined to win. Good pitching, fielding, and hard hitting on their part enabled them to defeat their nearest rivals and come out on top.

The season ended in glory for the class of '39, for besides winning the tournament, three members won coveted baseball sweaters, emblematic of good playing.

The Nineteen Thirty Seven

BASKETBALL

The Varsity basketball games always find Websterites in a state of excitement and ready to support their team in victory or defeat.

Webster opened the season by playing a new rival, Fontbonne, on the opponent's court. The smooth playing of a fast team gave Webster her first victory by a score of 27-18.

The following week Webster again played on a hostile court when she met her traditional rival, Maryville. When the final whistle blew amid the din of shouting spectators the score stood at a tie 17-17.

The next team to fall before Webster's close guarding and sure passwork on the home court was the Y. W. H. A. by a count of 19-18.

With March thirteenth came Webster's first defeat at the hands of a tall and rangy Fontbonne sextet. The 20-19 score ably represents the hard-fought battle which evened the series between the two schools.

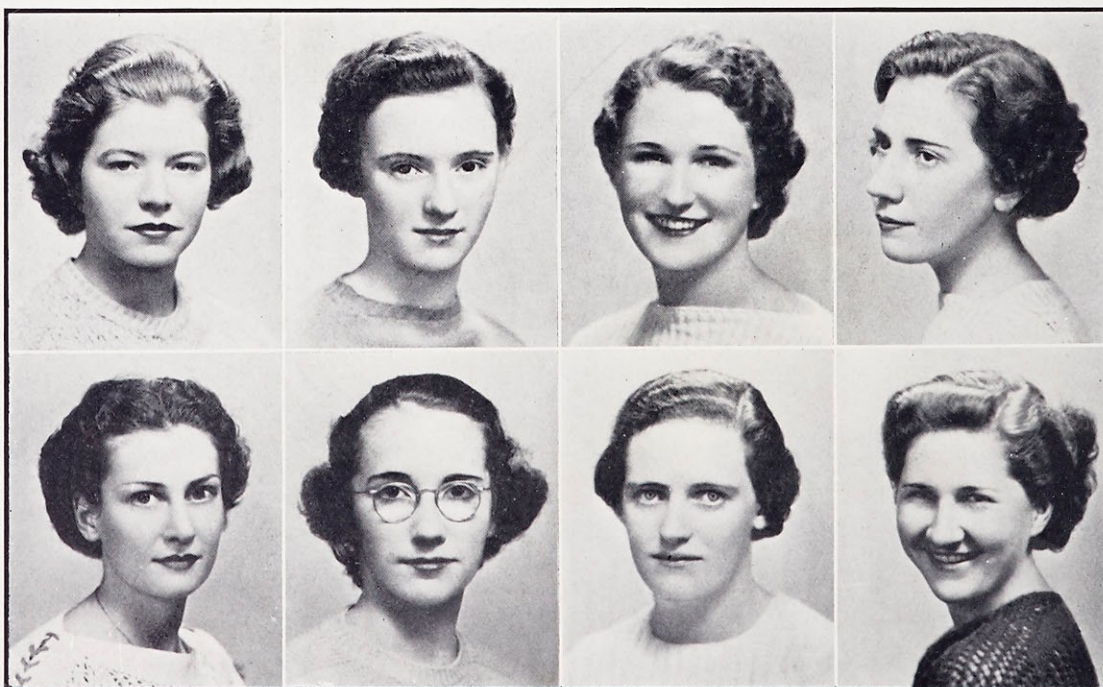
Hitting a winning stride again, Webster won a rough and tumble game marked by fouls against the Y. W. H. A., 15-11.

F. Baxter
A. Huger

T. Buckler
M. L. Hyde

V. Coad
C. Phelan

A. Ritch
G. Wencker,
Captain





BASKETBALL

The last game of the season, which Webster played against Maryville, ended with the latter on the top of a 10-8 score. This score tells the story of the almost uncanny guarding on both sides, but conceals the smooth passwork, the swiftness and skill of the players, and the almost perfect basketball played by both teams.

Seven seniors heard themselves cheered for the last time as a farewell: Captain Gladys Wencker, Carolyn Wells, Catherine Phelan, Ahrea Huger, Mary Rita Hughes, Dolores Becker, and Gertrude O'Rourke.

The basketball season formally ended with the class tournament. Each class team elected a captain as follows: seniors, Carolyn Wells; juniors, Veronica Coad; sophomores, Dorothy McGillen; freshmen, Elizabeth Pollmann. In the first games the freshmen defeated the sophomores 18-7 while the seniors won from the juniors 17-16. In the finals the freshmen won top honors by defeating the seniors by a score 17-13. Thus a successful and exciting season was brought to a close.

D. McGillen
D. Becker

E. Pollmann

B. Vette

G. O'Rourke

M. R. Hughes
C. Wells



The Nineteen Thirty Seven



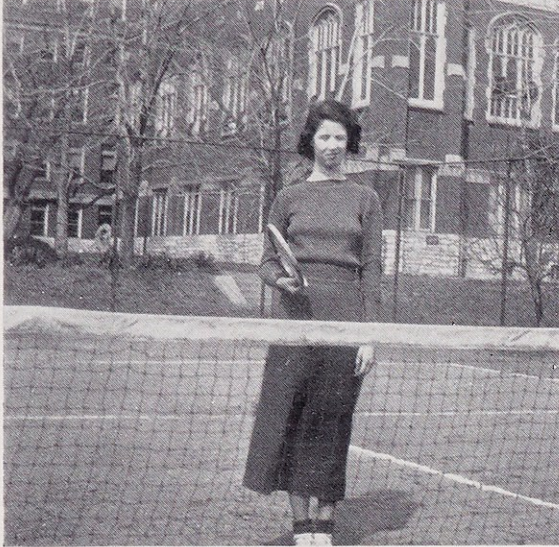
Finish of the 50-Yard Dash

TRACK

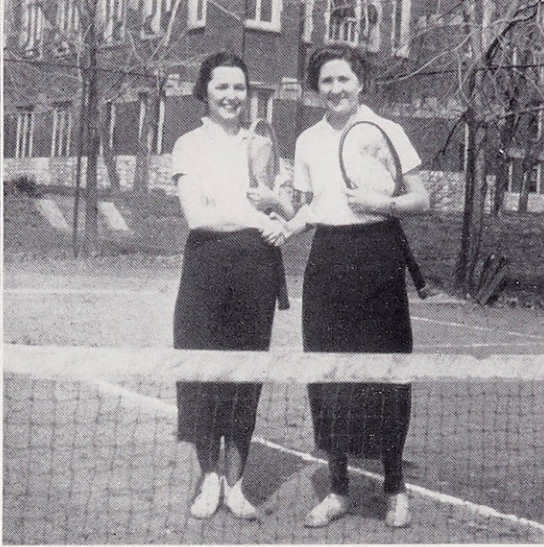
Perhaps one of the most enthusiastically anticipated events in the athletic life of Webster College is the Track Meet. This may be attributed to the fact that so many different girls, who haven't appeared on either the volleyball or the basketball courts, participate in the various events.

First on the program is the baseball game between the two finalists in the elimination tournament. The track events follow, starting with the fifty-yard dash. Basketball and baseball throws attract a great many aspirants, and once again great prowess is displayed as the ball fairly sails through the air. The seventy-five-yard dash is exciting. The standing broad, running broad, and high jumps are probably the most breath taking, and the most stiffening, events of the day. The final event is the relay, which always decides the winner of the meet.

Last year's winners were: seniors, first; sophomores, second; and juniors, third. The awards are presented at the traditional Athletic Banquet following the meet.



G. O'Rourke



A. Schlueter and G. Wencker

TENNIS

With spring fever comes tennis fever. If one isn't hearing, "Have you signed up for the court?", one hears "How many are waiting?", and on goes this chatter till the close of school in June. But well may these remarks be justified because what is better than a good, snappy game of tennis! Last year the rain withheld its torrents and the "game went on" with Gertrude O'Rourke, the singles champion, and Gladys Wencker and Anastasia Schlueter winning the doubles.

Much the same way is Ping-Pong greeted in the Fall. This new sport at Webster has gained great recognition. As a result a tournament was inaugurated, now claiming such champions as Gertrude O'Rourke in the singles and Alice Louise Smith and Kitty Phelan in the doubles.

If Mother Nature will only hold back those showers this season there will be a great tournament.

PATRONS

Most Rev. Charles F. Buddy	Mr. and Mrs. J. V. Martinek
Miss E. Albietz	Dr. E. H. Marvin
Mr. and Mrs. C. R. Baxter	Miss Bettie Matthews
Mr. F. D. Beardslee	Miss Celia McCue
Mr. and Mrs. E. L. Boneau	Mr. and Mrs. Arthur R. McKinley
Mrs. L. A. Bowlin	Mr. and Mrs. J. Merkel
A. Brandenburg Market	Mr. H. E. Mortland
Dr. and Mrs. Edmund P. Buddy	Mrs. H. E. Mortland
Mr. and Mrs. A. C. Cantalin	Mr. and Mrs. D. H. Mulhern
Mr. and Mrs. J. E. Carroll	Mr. and Mrs. J. J. O'Connor
Mr. and Mrs. D. Lloyd Casey	Mrs. Oliver R. Ojeman
Mr. and Mrs. G. C. Chamberlain	Mr. and Mrs. Wm. O'Toole
Clara Maier Beauty Shop	Miss Lakme Perez
Mr. and Mrs. M. C. Coad	Miss Leah Perez
Mr. and Mrs. J. C. Corrigan	Mr. and Mrs. Leonard Perez
Mr. R. L. Crowley	Mrs. Richard A. Perkinson
Mrs. R. L. Crowley	Mr. and Mrs. E. A. Pickel
Mrs. Louis J. Dandurant	Mrs. M. Pollmann
Blanche L. Dinius Dry Goods Store	J. A. Ratushinsky, Tailor
Dr. and Mrs. D. R. Donovan	Miss Frances Rice
Miss Mary G. Dooling	Dr. and Mrs. Frank Ritter
Mrs. J. E. Driscoll	Mr. and Mrs. H. Roehling
Miss Mary Jane Driscoll	Mr. and Mrs. Frank Rogles
Mr. and Mrs. W. E. Fink	Mr. Hugh F. Russell
Dr. and Mrs. J. F. Gallagher	Mr. and Mrs. J. H. Savage
Mr. L. H. Gamp	Mr. and Mrs. L. H. Schleicher
Mrs. L. H. Gamp	Miss Agnes Schmitt
Mrs. W. C. Ghio	Misses Ida and Rose Schneiderhahn
Mrs. S. W. Godfrey	Miss Theresa Shea
Mr. and Mrs. Henry W. Hayden	Dr. C. F. Sherwin
Mr. and Mrs. T. M. Hayes	Mrs. C. F. Sherwin
Mr. and Mrs. H. C. Henning	Mrs. George F. Smith
Mr. Robert W. Herr	Mr. Frank C. Thompson
Mr. and Mrs. F. J. Herre	Mr. and Mrs. J. E. Touhill
Mr. and Mrs. A. C. Hoffmeister	Mrs. G. J. Vande Steeg
Mr. and Mrs. H. A. Huger	Mr. and Mrs. Henry A. Waldschmidt
Mr. D. M. Jones	Mrs. Frances Walsh
Mr. Edmund A. Keane	Mr. P. J. Walsh
Mr. P. J. Keeley	Mr. and Mrs. Fred Wencker
Mr. and Mrs. A. J. Klorer	Miss Geraldine Wencker
Mr. and Mrs. W. B. Kochner	Wood's Pharmacy
Koelco Electrical Company	Sisters of Loretto, Montgomery, Ala.
Mr. and Mrs. Charles Knoedelseder	Ursuline Nuns, Kirkwood, Mo.
Miss Christine LeBrun	Ursuline Senior Class, Kirkwood, Mo.
Miss Rosalie LeBrun	Webster College Choral Club
Mr. Albert C. Lishen	Webster College Orchestra
Mr. G. L. Lower	Student Government Association
Mrs. G. L. Lower	The Senior Class
Miss Marian Lower	The Junior Class
Miss Elizabeth Ludden	The Sophomore Class
Mr. and Mrs. Micheal Lynn	The Freshman Class
Mr. and Mrs. John F. Maloney	

SNAPSHOTS



SNAPSHOTS

S N A P S H O T S



S N A P S H O T S

Compliments of

THE GEO. F. SMITH COMPANY

CONSTRUCTION AND INDUSTRIAL EQUIPMENT

FRANKLIN AND CHANNING
St. Louis, Mo.

SAINT LOUIS UNIVERSITY

FOUNDED 1818

OLDEST UNIVERSITY WEST OF THE MISSISSIPPI RIVER

THE GRADUATE SCHOOL

Offers courses and research leading to the degrees of MASTER OF ARTS, MASTER OF SCIENCE, and DOCTOR OF PHILOSOPHY in anatomy, apologetics, bacteriology, biochemistry, biology, chemistry, economics, education, English, French, Greek, geology, geophysics, German, history, Latin, mathematics, pathology, pharmacology, philosophy, physiology, physics, psychology, sociology and social work, Spanish and theology.



A limited number of teaching fellowships, graduate assistantships and service scholarships are available to graduate students.

*For Particulars, Address, THE DEAN OF THE GRADUATE SCHOOL
15 NORTH GRAND BOULEVARD, ST. LOUIS, MO.*

THE SCHOOL OF EDUCATION

Offers in the *late afternoon and Saturday mornings* professional and academic courses to teachers in service desirous of completing their work for a degree.

*For Particulars, Address, THE DEAN OF THE SCHOOL OF EDUCATION
15 NORTH GRAND BOULEVARD, ST. LOUIS, MO.*

Erker's

OPTICAL GOODS — PHOTO SUPPLIES
ART MATERIALS
MOVING PICTURE MACHINES



610 OLIVE - - - - 518 N. GRAND

USONA DRUG STORE

F. C. AHRENS, Prescription Specialist
KINGSHIGHWAY AT WATERMAN
Phones: ROsedale 3194 and 8936

Compliments of

ARSENAL SERVICE STATION
SITE GASOLINE & OILS

6848 ARSENAL ST. Hilland 9210

HY-ROCK

DELICIOUS & REFRESHING • FINEST INGREDIENTS
HY-ROCK BEVERAGE CO.
3301 S. Broadway PRespect 4488

VOGUE BEAUTY SHOPPE

Josephine Klingele, Prop.

All lines of beauty culture. Zotos and Jamal machineless permanent waving, and Eugene croquinole waving a specialty.

Webster 4367 No. 9 Gray Ave.

Compliments of

Steel Workers Organization
Committee of St. Louis District

7370 Manchester

Compliments of

St. Anthony's Hospital



WILES-CHIPMAN LUMBER CO.

FRanklin 6500
1234 S. KINGSHIGHWAY

Compliments of

Rodman's Service Station

JEFFERSON & LOCUST

FOR YOUR
NEXT

CHEVROLET

REICHARDT MOTOR CO.

WEBSTER GROVES

Compliments of
St. Mary's Academy

1370 Pennsylvania St.
DENVER, COLO.

Best Wishes

ANCHOR POST FENCE CO.
WIRE AND IRON FENCES
HERBERT GOLTERMAN
MAin 0035 Louderman Bldg.

Phone, Kirkwood 1699

CHAS. H. SIGNOR

Plumbing and Heating

912 NORTH SAPPINGTON ROAD
KIRKWOOD, MO.

COlfax 2379

HENRY KOELSCH
Upholstering — Repairing — Refinishing
WOOD, REED AND FIBRE FURNITURE
CHAIR CANEING

Work Called for and Delivered
3701-3 KOSSUTH AVE.

SINGER
Sewing Machine Co.

119 WEST LOCKWOOD STREET

WEBSTER GROVES, MO.

C. R. PARK, *Mgr.*

REpublic 2986

PHONE: FOrest 8779

DR. NANNIE J. CHAPPELL

OSTEOPATHIC PHYSICIAN

5023 WASHINGTON BLVD. ST. LOUIS, MO.

STEEL

*insures Strength
and Security*

COLUMBIA IRON WORKS, INC.

IRON WORK FOR BUILDINGS

4254 Vista Avenue

FRanklin 1617 ST. LOUIS, MO.

JEfferson 1992
JEfferson 1993
GARfield 0506

FITZSIMMONS COAL CO.

BEST GRADES OF HARD
AND SOFT COAL

416 South Compton Avenue
SAINT LOUIS, MO.

Hlland 4100

RELLER CHEVROLET CO.

SALES — SERVICE

PASSENGER CARS —
TRUCKS

7239-53 Manchester Ave.

EDW. F. HOWARD & SONS

Licensed Embalmers and Funeral Directors
AMBULANCE SERVICE

New Parlors—4212 St. Louis Avenue
COlfax 8490

Compliments of
GOODFELLOW LUMBER COMPANY

Natural Bridge at Goodfellow

EVERgreen 1525

Compliments of

●
INTERNATIONAL SHOE CO.

DIXIE *better* **FEEDS**

for BETTER BROILERS
BETTER EGGS
BETTER MILK

See your Dixie Dealer today
DIXIE MILLS, East St. Louis, Ill.

Compliments of
THOS. ENGLISH

Insurance Adjuster

Pierce Building

KRIEGSHAUSER MORTUARIES

Air Conditioned
PARLORS & CHAPEL

Unexcelled Parking Facilities

4228 S. KINGSHIGHWAY - FLanders 2244
4104 MANCHESTER - - - FRanklin 5922

Compliments
of
SUPERIOR LAUNDRY

1745 S. 18th

WEbster 1895

GRand 9000

Phone WEbster 3018

Come to
GREEN LEA
for
ICE CREAM
AND
DOUBLE RICH MALTS

At 30 West Lockwood
WEBSTER GROVES

Compliments of

DEAN SISTERS

CLAYTON & LINDBERGH ROADS

Phone WEbster 1515

GREENE TIRE & BATTERY SERVICE

LEE & GOODYEAR TIRES
EXIDE BATTERIES
PHILLIPS 66 GAS & OILS

Lockwood & Old Orchard Webster Groves, Mo.

Compliments of

BISHOP TOOLEN HIGH SCHOOL

Lafayette & Old Shell Rd.

Mobile, Ala.

J. F. CASEY

WHOLESALE

Eggs & Poultry

1431 N. TAYLOR

Best Wishes

M. J. CULLINANE

**LA VERGNE BLISNER
SCHOOL OF DANCING**

CLASSES AND PRIVATE LESSONS DAILY
IN ALL TYPES OF DANCING

Richmond Heights

Webster Groves

Phone: WEbster 2729

J. C. LEWIS

UNDERTAKER

22 EUCLID AVE.

Webster Groves, Mo.

For attractiveness and value; for assurance
of fair wages; to establish human working
hours and sanitary factories;

*Ask for Garments That Bear
This Union Label*



A demand on the part of the consumer for garments bearing this label will help to abolish sweat-shops from the women's garment industry.

**INTERNATIONAL LADIES'
GARMENT WORKERS' UNION**

Southwestern Regional Office

624 N. Ninth St. - - St. Louis, Mo.

CATHOLIC BONDS *for* INVESTMENT

Circulars on Request

William J. Crow

Suite 347 Boatmen's Bank Building

St. Louis, Mo.

GArfield 2113

LAclede 0249

FOrest 8979-J

BUMILLER & MEYERSIECK

GENERAL CONTRACTORS

1921 MARCUS AVENUE

EARL BUMILLER

ST. LOUIS, MO.

**ST. JOHN'S HOSPITAL
SCHOOL OF NURSING**

affiliated with

ST. LOUIS UNIVERSITY

307 South Euclid

St. Louis, Mo.

THE DYCE SCHOOL

3953 Sullivan Avenue

offers

TUTORING, INDIVIDUAL
and GROUP INSTRUCTION

in

Secretarial, High School
and College Subjects

Call COlfax 3147-J *Reasonable Rates*

**A. J. ACKERMAN
FILLING STATION**

SHELL GAS & OIL
TIRES, TOOLS & ACCESSORIES

WEBster 2961

24 W. LOCKWOOD

FABRICS For SPRING and SUMMER

SILKS WOOLENS

COTTONS LINENS

315
No. 10th
Street

Welek's

Phone
CENTral
6 3 5 0



Asphalt Built-up, Tar
and Gravel, Slate
and Tile Roofing
and Repairing. Also
shingles and siding of
any description sold
or applied.

REPAIRING OUR SPECIALTY

ROsedale 1421

5080 DELMAR BLVD.

H. L. KREBS STUDIO

Miniatures . . . Copies from Photographs
in Black or Sepia, Water Color or Oil
Portraits in Oil . . . After Photographs
Restoration of Old Photographs and
Paintings

3644 BOTANICAL AVENUE

PRospect 5663

St. Louis, Mo.

R. H. TAIT & SONS CORP.

AIR CONDITIONING AND
REFRIGERATING
ENGINEERS

SAINT LOUIS, MISSOURI

G. C. BENNE GROCERY CO.

Phone

WEBSTER 4300

REPUBLIC 2286

748 Marshall Avenue

Webster Groves, Mo.

Compliments of

S. W. STEIN MEAT CO.

314 N. 21ST.

WINKLER'S MARKET

Quality Meats, Groceries, Vegetables

2838 N. Union Blvd.

Compliments of

Cullinane Bros. Funeral Directors

1726 N. Grand

Central 0580

**JOHN W. ROWAN
PLASTERING CO., INC.**

VICTORIA BLDG.

SAINT LOUIS

Compliments of

**E. E. SOUTHER
IRON CO.**

1952 KIENLEN

Compliments

MARSHALL DRUG CO.

PRESCRIPTION DRUGGIST

1300 Boland Pl.

STERLING 3027

Lunches served to school children daily

WARD BROS., INC.

SERVICE STATION

Cities Service

134 East Lockwood Avenue

REpublic 2253

Main 3929

**HUGH H. STEWART REALTY CO.
REALTORS**

311 North 11th Street
CHARLES H. STEWART ST. LOUIS



LORETTO ACADEMY

3407 Lafayette Avenue
ST. LOUIS, MO.

•

DAY SCHOOL
for Grade and High School
Pupils

Phone: Hlland 0763 *Everything in Printing*

**SHREWSBURY
PRINTING COMPANY**

AUGUST M. LEMBERGER
Manager

7728 BIG BEND BLVD.
Shrewsbury,
ST. LOUIS, MO.

Compliments
of

JEFFERY RIDING STABLES

HILLAND 9831

NEAREST STABLES TO FOREST PARK

**CLAMP-PREHN
PLUMBING CO.**

Est. 1893

PLUMBING
HEATING
SEWERING
*Special Attention
Given
Repair Work*

ALL WORK
GUARANTEED
*"Webster's Fully
Equipped
Plumbing Shop"*

Webster 18
51 N. GORE

Compliments
of

JOE DORAN

GRand 3100

CASCADE
WET WASH
LAUNDRY CO.

VICTOR STREET AND OHIO AVENUE
ST. LOUIS, MO.

Riverside 9574
Tire Clinic, 3405 Gravois
SUPERIOR TIRE REGROOVING
Regrooving and Guaranteed Vulcanizing
4616 Morganford
ST. LOUIS

J. A. Battefeld Marble and Tile Co.
4273 JUNIATA STREET
ST. LOUIS, MO.

Compliments
of
**FRED HARVEY
RESTAURANTS**

CAbany 8438
**WELLSTON
MONUMENT CO.**
7101 EASTON AVENUE
Joseph H. Davis St. Louis Co., Mo.

FRanklin 2921 A. G. STORE
Dinzler's Packing House Market
CALL US FOR SERVICE
Wholesale and Retail
3878 EASTON AVENUE

Best Wishes
WILLIS W. BENSON
COLLECTOR OF REVENUE
OF
ST. LOUIS COUNTY

RAndolph 8038
FRIGIDAIRE
Automatic Refrigerating Systems
PRODUCT OF GENERAL MOTORS
**WEBER BROS.
REFRIGERATION CO.**
FRIGIDAIRE SALES
MAYTAG WASH MACHINES, RADIOS
AUTOMATIC OIL BURNERS
ELECTRIC STOVES, COAL STOKERS
A. S. WEBER, *Manager*
7813 Forsythe Blvd. Clayton, Mo.

Phone, NEWstead 0600
ELIZABETH THIELEN'S
APPROVED MARINELLO SCHOOL
OF BEAUTY CULTURE
Write for Catalog
Service to the Public
4479 WASHINGTON BLVD.
at Taylor
ST. LOUIS, MO.

Combs - Dubal Studio
CREATORS OF DISTINCTIVE PORTRAITS
4474 WASHINGTON BLVD.

TELEPHONE
FRanklin 1705

GENERAL AUTOMOTIVE SERVICE
S. M. STARR, *Prop.*
General Auto Repairing—Body and Fender Work
Washing and Greasing
Mobilgas
2207 BIG BEND ROAD
Hiland 9103

BENDER & KOBETTS
Standard Service
SKINKER AND CLAYTON ROADS

DIABETIC FOODS We are the largest distributors in St. Louis and are receiving new items daily. Ask for price list and food chart. No obligations.

We are also distributors in St. Louis of Modern Food Products, recommended by Benjamin Gayelord Hauser. New Century Foods, recommended by Martin W. Pretorius. Live Food Products, recommended by Paul C. Bragg. Lueth's Diabetic and Reducing Breads.

J. F. Conrad Grocer Co.

CHestnut 1839

17 N. Sixth St.

Compliments of

Clarence H. (Hap) Appel

City of Webster Groves

Compliments of

**OLD ORCHARD
DRUG STORE**

FOrest 7900

Established 1893

**ERNST OERTEL, INC.
FURRIERS**

Cold Storage—Minimum Charge \$2.00
CLEANING—REPAIRING—RELINING
4914 Maryland Avenue
BEN RABEN

**WILSON'S
SPECIAL 50c DINNERS**
BROILED STEAK, CHOPS, ETC.
HOME MADE PIES

16 So. Central, Clayton CABany 9454

Compliments of

C. G. REED
Druggist
7401 Pershing

ONCE **Pebco** ALWAYS CHestnut 3720
BRANDS
Producers Egg & Butter Co., Inc.
Packers and Distributors
"U. S. Government Certified, Grade A Eggs"
N. M. Magnusson 1025-27 North Broadway

H. K. HASFELD
ST. JOHN'S COMMUNITY BANK

•
IF IT IS A WATCH, CLOCK
OR JEWELRY, I REPAIR IT
All Work Guaranteed

Compliments of

**JIMMY RYAN'S
SERVICE STATION**

JEFFERSON & ST. LOUIS

•
8924 ST. CHARLES ROCK ROAD

We are now open . . .

Authorized Dealers in
CHRYSLER AND PLYMOUTH CARS AND PRODUCTS

24-HOUR SERVICE

Modern Equipment . . . Open Sundays

BIG BEND MOTOR SALES COMPANY

CHAS. DINSMORE, Manager

STerling 0991

2207 BIG BEND ROAD

Our Location Makes Possible Liberal Allowances on Your Old Car

FIRST NATIONAL BEAUTY SALON

ZOTOS AND JAMAL

MACHINELESS PERMANENT WAVES

FREE TREATMENTS AND INSTRUCTIONS ON

MERLE NORMAN SKIN TREATMENTS ON INDIVIDUAL MAKEUPS

PERMANENT WAVING AND HAIR CUTTING BY MR. MONCKTON, MANAGER

Also Operating

LINDELL BEAUTY PARLOR

4067 St. Louis Ave.

**BUILDING LABORERS
LOCAL 53**

LEON DOOM, Secretary
J. H. TAYLOR, Business Agent

OFFICE: 1021 N. COMPTON
Phone, FRanklin 8941

Compliments of

John M. Crutsinger

Surveyor

St. Louis County

ARCADE SHOE REPAIR

HARRY SLOOFMAN, Prop.

"SERVICE WITH A SMILE"

126 W. LOCKWOOD Webster 871

CLEANING • PRESSING • REPAIRING
DYEING • STORAGE

Let Us Store Your Furs

**CRYSTAL
CLEANING COMPANY**

6246 CLAYTON AVENUE

ST. LOUIS, MO.

Mattress Making
Chair Caneing

REpublic 2928

L. A. PERRIN

GOOD WORK PAYS

Reupholstering—Remodeling—Repairing—Refinishing
OF FINE FURNITURE

765 E. Big Bend Blvd.

Webster Groves, Mo.

BUSINESS TRAINING

Enrolling Only

HIGH SCHOOL AND COLLEGE GRADUATES

COURSES: Secretarial, Accounting, Civil Service, Court Reporting, Office Machines, Bookkeeping, Stenographic, Medical-Dental Secretarial, Aggressive Employment Service.

Telephone, Write or Call for Full Information.

SAINT LOUIS BUSINESS COLLEGE

A. G. SCHREIBER, Supt.

IMOGENE MURPHY, Principal

PRospect 4422

GRAVOIS AND JEFFERSON

SURE GRIP SHADE CO.

E. C. BRADY, Mgr.

WINDOW SHADES NEW
AND CLEANED
VENETIAN BLINDS

3881 BELL AVE.

JEfferson 9716

RAY H. SUTTER

Complete line

of

**VENETIAN BLINDS
and WINDOW SHADES**

CAbany 1513

6042 DELMAR

ROsedale 2800

Dorr & Zeller Catering Co.

Weddings, Teas and Receptions
Served on Short Notice

DeBaliviere and Waterman Avenues

SAINT LOUIS

GUARANTEED SERVICE BY EXPERTS
CONTRACT EXTERMINATOR CO.

"Vermin Exterminating"

GENERAL OFFICE — LABORATORIES
4210 VISTA AVENUE

H. J. Huntebrinker, Manager

JEfferson 2563

Compliments of

Mr. Arthur C. Betz

2255α BLENDON PL.

Kilgen Organs

Chosen by 5,000 Churches
in America

Geo. Kilgen & Son, Inc.

4016 N. Union Bld., St. Louis, Mo.

Telephone, CAby 9593 Your Inspection Invited

CLAYTON BEAUTY SALON

512 SOUTH HANLEY ROAD
(North of Wydown Blvd.)

Experienced
Licensed Operators

MISS MARIE FITTS,
Proprietress

FOrest 0882

NONA STOUT

Call and Inspect

The Nona Dress Shoppe

311 DeBALIVIERE

LINGERIE

HOSIERY

ACCESSORIES

JEfferson 0107

Res., EVergreen 2364

President

Building Trades Council

T. F. QUINN

Secretary and Treasurer

STEAM AND GAS FITTERS

UNITED ASSOCIATION

LOCAL No. 562

3308 LINDELL BLVD.

ST. LOUIS, MO.

Phone
JEfferson 1690

City Inspection
Establishment No. 52

WOLLMERSHAUSER SONS PROVISION CO.

Manufacturers of and dealers in

FINE SAUSAGE

AND MEAT FOOD PRODUCTS

Office and Plant: 3914 COTE BRILLIANTE AVE.

LUCKS ORWIG

INTERIOR DECORATORS

WALL PAPER — PAINTING
FURNITURE — DRAPERIES

Carpets and Rugs

4652 MARYLAND

W. AYTON COX

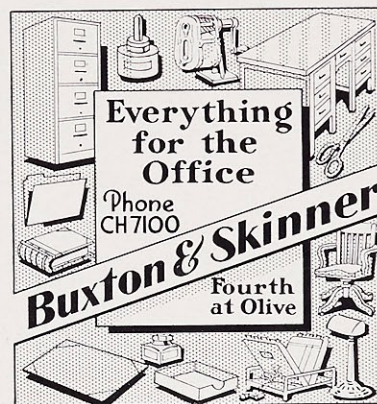
General Insurance

Associated with

GEO. D. CAPEN & CO.

1650 Pierce Bldg.

Saint Louis



FOR YOUR WINDOWS

SEE

DREES SHADE CO.

FOR SHADES, DRAPERIES, CURTAINS
AND VENETIAN BLINDS

ALSO

UPHOLSTERED FURNITURE AND
SLIP COVERS

GRand 9700

2616 SHENANDOAH

Compliments of

W. E. (BILL) GANT COMMISSION CO.

NATIONAL STOCK YARDS

Illinois

ROBERT FADEM
Tailor

930 ACADEMY ROsedale 9621

Compliments of
JAEGER TEA & COFFEE CO.
4413 Olive St.

Compliments of
FULTON LOAN CO.
230 Paul Brown Bldg.

Compliments of
DALY & FOGERTY
Grocers

6401 Bartmer

Compliments of
SISTERS OF LORETTO

St. Mary's Convent
121 South Rockton Street
Rockford, Illinois

NORFOLK MACHINE & MFG. CO.
Precision Screw, Machine Work
Models Made and Developed
1611 GOODFELLOW

Compliments of

Highway "66" Cafe

Chippewa Rd. West of Hampton

Oldsmobile Six and Eight
**VOLLMER-SLAWSON
MOTOR CO., INC.**

Sales and Service

216 W. Lockwood Ave.
WEBSTER GROVES, MO.

Motorcycle Pick-up and Delivery Service
St. Louis County's Largest Oldsmobile Dealer

All make Cars Repaired and Painted • Hilland 1124-1125
Webster 270

LOUISE BEAUTY SALON
3711 S. KINGSHIGHWAY
Flanders 9837
All Branches of Beauty Culture
PERMANENT WAVING OUR SPECIALTY

Call

**SUBURBAN
CLEANING & DYEING CO.**

for
Vault Storage, Moth Proofing, Rugs
Drapes, Curtains, Furniture, Blankets
or
Cleaners of Everything Cleanable

STORES:
24 N. GORE - - - - Webster Groves
Phone: WEBster 1280-1281
2502 SUTTON - - - - Maplewood
REpublic 1330 -Phones- Hilland 5156

Compliments
of
LORETTO ACADEMY
•
LAS CRUCES NEW MEXICO

For Good Things to Eat Visit the

"TOLL HOUSE"

•
OPEN ALL NIGHT

OLD ORCHARD & BIG BEND
127 W. LOCKWOOD
7270 MANCHESTER AVENUE (Maplewood)

STOCK YARDS MEAT MARKET

MRS. L. TAYLOR, Prop.

MEATS . . . GROCERIES . . . FRUITS
AND VEGETABLES

2505 NORTH BROADWAY Phone CHestnut 0263

RAY'S PHOTO SHOP

All Kinds of Photographic Work
Picture Frames Made to Order

Artists' Supplies

•
11 GRAY

WEbster 2591

1 Block East of Union Electric

Compliments of
W. S. STEELE
UNIVERSITY CITY

BRENNAN-KINSELLA & CO.

Investment Securities

•
418 Olive

Compliments of

R. J. SHERMAN

STANDARD
SERVICE STATION

222 W. LOCKWOOD

ALLEN E. KNIGHT

SHELL
SERVICE STATION

BIG BEND & ROCK HILL ROAD

Best Wishes

SALA'S CAFE

1933 S. KINGSHIGHWAY

HEEGE MARKET

5604 HEEGE ROAD

FLanders 9739

GROCERIES, MEATS & VEGETABLES
FLOUR, FEED & GARDEN SEED

We Deliver

Compliments of

PRENDERGAST LUMBER CO.

826 CASS AVE.

Phone: PRospect 5880

**ST. LOUIS
TERRAZZO & MARBLE CO.
CONTRACTORS**

"Quality and Prompt Service"

PRESENTED BY
H. J. GIUDICY

OFFICE AND PLANT
4528-30 OLEATHA AVENUE
ST. LOUIS, MO.

Compliments of

**STANDARD
STEEL & RAIL COMPANY**

•

CEntral 8239

**JOE CUSUMANO
FRUIT & PRODUCE CO.**

915 NORTH 4TH STREET

GLASS REPLACEMENTS FOR
ALL MAKES OF AUTOMOBILES

**LOCUST
AUTO GLASS CO.**

3125 LOCUST STREET

JEfferson 2788

CAbany 9556

**PLATINUM
STUDIO de BEAUTE**

7649 DELMAR

Bessie Smith, Prop.

Phone: Webster 205

Hlland 0031

Parker
Undertaking Co.
(INCORPORATED)

Private Ambulance

WEBSTER GROVES, MO.

**ST. ELIZABETH
ACADEMY**

Arsenal Near Grand
ST. LOUIS, MISSOURI

•
*For Resident
and Day Students*

MARGARET BISHOP BREEN, INC.
Costumes for Dramatic Productions

SAUM STUDIO BLDG.
Grand Blvd. and Franklin Ave.
Room 222 FRanklin 7397

**ROYAL TYPEWRITER
COMPANY, INC.**

116-120 North Tenth Street
ST. LOUIS, MO.

•
Telephone CHestnut 6626-7-8-9
FRED ZINGRE

SERVICE QUALITY
GUARANTEE WELDING CO.

4142 OLIVE STREET
NOBLE HALL FRanklin 7871

Compliments

of

**MRS. HICKEY'S
TRAINING SCHOOL**

for
Secretaries

•
560 NORTH SKINKER
ST. LOUIS, MO.

**SARACHON HOOLEY SCHOOL
OF SECRETARIAL TRAINING**

A progressive school offering to a
small group a highly specialized, in-
tensive training for college girls who
are interested in the better type
position.

ANNE SARACHON HOOLEY, Director
5744 CATES AVENUE

•
**P. O. HOWE
HARDWARE CO.**
646 E. BIG BEND BLVD.

WEBster 652

MAin 5215

**LAUNDRY DRYER AND
HEATING CO.**

Direct Motor Driven and Gas Heated
Laundry Machinery and Appliances

JAS. K. KIDD, Manager

121 North Eleventh Street
ST. LOUIS, MO.

PERSONAL CARDS

A Specialty

COMMERCIAL AND JOB PRINTING

CALL EVergreen 9475

GLOBE PRINTERY • 2710 Clara

Julia Britton

ART & GIFT SHOP

Lending Library, Hemstitching, Buttons, Pleating,
Artistic Picture Framing and Greeting Cards
for All Occasions

Kodak Developing *Quick Service*
PRospect 0393 2344 SOUTH GRAND BLVD.

GRand 0299

Victor 0299

Webster Groves Trust Co.

RAVARINO & FRESCHI, Inc.

MACARONI MFGRS.
FOOD PRODUCTS

ST. LOUIS, MO.

CLAY BALLEW

Vocal Teacher

5507 PERSHING AVE. FOrest 2055

EMIL FREI, Inc.

3934 SOUTH GRAND BLVD.

ST. LOUIS, MO.

Compliments of
GRACE BEAUTY SALON
PARK PLAZA HOTEL

DAY & NIGHT GARAGE

922 CHOUTEAU AVENUE

We Specialize in Truck Repairing

Compliments of
Anderson-Stocke-Buermann
REAL ESTATE CO.
808 Chestnut

Compliments of
WACHA & CO.

4314 Olive St.

Barker Motor Company, Inc.
218 W. LOCKWOOD AVE.
Hlland 2123 :: WEBster 2123
DODGE and PLYMOUTH

Henrietta Economy Market
2800 Lafayette Avenue

PRospect 9838

Emulsified Asphalt for Waterproofing, Roof
Repairing, Sidewalks, Driveways or Tennis
Courts. *Call for Prices.*

BITUCOTE PRODUCTS CO.

1411 CENTRAL INDUSTRIAL DRIVE

GRand 5515

St. Louis, Mo.

COlfax 7207-J

H. J. KELLY
BUILDER

Bungalows Our Specialty

"Let us estimate your Repair Work"

4554 Lexington Ave. St. Louis, Mo.

● *Visit the*
**SPINNING WHEEL
GIFT SHOP**

You will find a complete line
of Religious Cards here.

GREETING CARDS FOR ALL OCCASIONS
2852 Union Blvd. EVergreen 2334

Hlland 2610

Established 1908

JOHN P. **DOLAN** REALTY CO., INC.

REALTORS

Rents—Loans—Insurance

6401 MANCHESTER AVE.

RAY R. DOLAN

DAN SHEEHAN

NATIONAL REFRIGERATORS CO.
Manufacturers and Distributors

FRICK
REFRIGERATION

●
COMMERCIAL
REFRIGERATORS

827 Koeln Ave.

St. Louis, Mo.

Compliments
of

J. B. Ford Sales Co.

●
RAILWAY EXCHANGE BLDG.

ALPHONSE SCHNEIDERHAHN

INVESTMENT SECURITIES
Specializing in Catholic Institutional Bonds

203-204 Victoria Building
407 North 8th St.

Phone: CEntral 8121

St. Louis, Mo.

Compliments
of

DIECKMAN

Photographers

for

1937 LAURETANUM

WE. 380

REP. 1120

Mittelberg Funeral Home
INC.

23 W. LOCKWOOD AVE.

*Prompt, Courteous, Economical
Service*

SAM C. MITTELBERG, Pres.

AMBULANCE SERVICE

COMPLIMENTS
LEE M. DUGGAN
CITY CLERK—COLLECTOR
RICHMOND HEIGHTS

6185 Delmar Blvd. Phone: CAbany 6800
**WEST SIDE PACKARD
SERVICE**
JACK CHORNEY

JEfferson 9037
PIANOS
GRAND and PLAYER PIANOS
OSCAR STEINBACH & SON

3734-36 COTE BRILLIANTE AVE.
Piano Tuning and Repairing a Specialty
PIANOS SOLD ON EASY PAYMENTS
PIANOS EXCHANGED

PRospect 2957
MARTIN ARNOLD
BOOK BINDING
LIBRARY, LAW AND BLANK BOOKS
GOLD STAMPING
2125 CHEROKEE ST. St. Louis, Mo.

Phone: Hlland 5665 Hours: 9 to 8 Tues., Fri., Sat.
ARWA
BEAUTY SHOP
6201a ARSENAL at Watson

BETTER . . . SAFER . . . FASTER . . . ODORLESS
DRY CLEANING
TRI-CITY CLEANING & DYEING CO.
REPAIRING . . . ALTERING
RELINING
WEbster 3316 115 West Lockwood Ave.

CLIFTON HEIGHTS MOTOR
INCORPORATED
NEW AND USED FORD CARS
Telephone: STerling 3100
5970 Southwest Avenue

Campus
BEAUTY SHOP
ALL BRANCHES OF BEAUTY SERVICE
OLIVE WINSCOTT
CAbany 9369 6559 University Dr.

Phone Watson 2201
D. J. WINHEIM
GENERAL MERCHANT

•
CAKVILLE, MO.

Compliments
of
a Friend

JEfferson 4135
**JOHANNES-TATE
PHARMACY**
PROFESSIONAL PHARMACISTS

FRED W. TATE
MISSOURI THEATRE BLDG.
636 N. GRAND BLVD.
ST. LOUIS, MO.

CASEY'S SERVICE STATION
Specialized Lubrication
GOODRICH TIRES . . . GOODRICH BATTERIES
ACCESSORIES
918 Walton ROSedale 9383

Compliments of
P. ROWAN & SONS CO.

Compliments of
Shenandoah Candy Shop

Compliments of
A FRIEND

MELETIO SEA FOOD CO.

822-26 North Broadway Central 7310

for All Departments

FISH

Fresh, Salted, Smoked, Pickled, Canned
Oysters, Fish and Sea Food

WHOLESALE AND RETAIL

**Ambrose Mueller
Drug Co.**

14 North Gore • 7 West Big Bend

Established 1896

Hiland 9487 Battery Charging

BEN'S Service Station

RED CROWN GASOLINES
ISO-VIS and POLARINE OIL—TIRES—BATTERIES
Alemiting Hyd. Lift Used
NAPHTHA—GAS—KEROSENE

6201 MANCHESTER AVE.

Compliments of
Warring Furniture Co.
7422 Manchester

**SHOPEZY
GROCERY and MARKET**

Mueller and Cox
Proprietors

FRANKLIN 9331
4397 LACLEDE AVENUE

Mabel Johnson, Gifts

MEXICAN ART CRAFTS
MOUNTAIN CRAFTS
PEASANT CRAFTS

1124 LOCUST Garfield 8557

Stertzing Floral Company, Inc.
"Say It With Flowers"
7268 MANCHESTER BLVD.

Bellevue Service Station

SINCLAIR PRODUCTS—GOODYEAR & U. S. TIRES
BATTERY SERVICE

1201 Bellevue Hiland 9642
RICHMOND HEIGHTS, MO.

Best Wishes

PASSIONIST FATHERS
PREPARATORY SEMINARY

Compliments of
Joseph C. Schroeder

ATTORNEY AND COUNSELLOR
AT LAW
425 TITLE GUARANTY BLDG.

Compliments of
LORETTA COLLEGE

EL PASO, TEXAS

Phone, Webster 4177

**SUBURBAN
FURNITURE COMPANY**

GIESEKING BROTHERS, Props.

36 WEST LOCKWOOD AVENUE
WEBSTER GROVES, MISSOURI

Best Wishes from

Cook Paint & Varnish Company

4465 MANCHESTER

Branch Offices in Principal Cities

SUMMER SCHOOL

Morning Classes in Shorthand and Typewriting

Term: 8-10 Weeks

- The success of Rubicam Graduates, employed in commerce, in professional life, and other vocations under the most varied conditions, confirms Rubicam's claim to leadership in Secretarial Training.

Telephone for Catalog

RUBICAM SCHOOL

4933 Delmar Boulevard

3469 S. Grand Boulevard

Forest 3900

LAclede 0440

Fine Cleaning for
RUGS

A SPECIALIZED DEPT. DEVOTED TO
FINE RUG CLEANING

FOR
ORIENTALS
OR
DOMESTICS

An old reputation for fine workmanship at prices all can afford to pay.
Lungstras cleans rugs as thoroughly, as gently as fine silk dresses.

Lungstras
RUGS & CLEANING CO.

STANDARD PRICES — PHONE BRANCH OR CARPET DEPT.