

Saurtanum

1936

Sister Francis Marie



THE LAURETANUM
1936

WEBSTER COLLEGE
Webster Groves, Missouri

1936

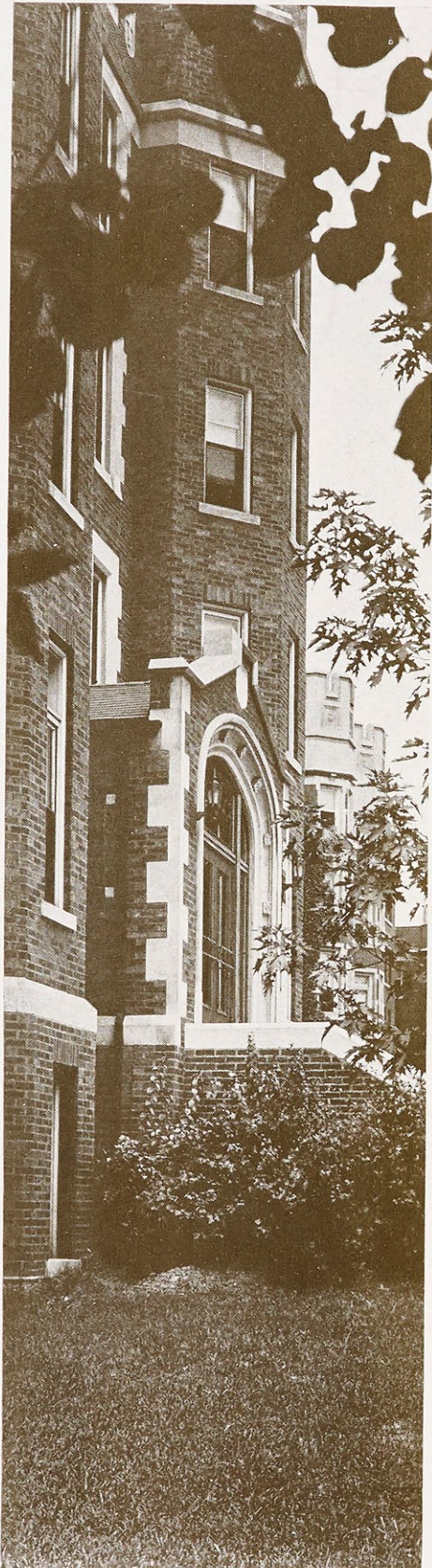


Loretto Hall towering above the spring foliage



DEDICATION

To Doctor George Francis Donovan in honor of his fifth year as president of Webster College and in appreciation of his untiring efforts to further the interests of our Alma Mater, we gratefully dedicate the *Lauretanum* of nineteen hundred thirty-six.



FOREWORD

In presenting the nineteen hundred thirty-six *Lauretanum*, we have endeavored to give you a book that embodies the spirit of Webster herself. No theme, then, is necessary. Our hope is that the college year may live again in its pages; that each illustration may be significant of some phase of campus activity.

CONTENTS

COLLEGE

CLASSES

CAMPUS

ORGANIZATIONS

ACTIVITIES



*The Grotto of
Our Lady*

PRESENTED BY—

LUCILLE GEIS—*Editor-in-Chief*

MARY RITA HUGHES—*Associate Editor*

GLADYS WENCKER—*Business Manager*

JEANNE DEVANEY—*Art Editor*

JANE O'DONNELL—*Advertising Manager*

MOIRA HAYES—*Patrons*

ALICE LOUISE SMITH—*Circulation Manager*

Engraving by
CENTRAL ENGRAVING COMPANY

Printing by
BUXTON & SKINNER COMPANY

Photography
DIECKMAN STUDIO
ALEX PIAGET

Binding
BECKTOLD COMPANY

OFFICERS OF ADMINISTRATION

GEORGE FRANCIS DONOVAN, A.M., Ph.D.
President

MOTHER M. EDWARDA ASHE, A.M.
Regent

SISTER M. FLAGET WALLER, A.B.
Acting Dean of Studies

SISTER FRANCES MARIE WALSH, A.M.
Dean of Women

SISTER LILLIAN CLARE REED, A.B.
Registrar

SISTER KATHLEEN MARIE FOLEY
Treasurer

SISTER MARY JOSEPH SCHERER, A.M., Ph.D.
Librarian



FACULTY

- SISTER MARY LOUISE BEUTNER, A.M.
Instructor in English (1932)
- SISTER ALOYSIA MARIE BLINCOE, A.M.
Professor of English and Director of the Department (1927)
- SISTER MARY PAULA CARETTO, MUS.B.
Instructor in Voice (1928)
- SISTER MARY BORGIA CLARKE, A.M., CAND. PH.D.
Professor of Mathematics and Director of the Department (1916)
- SISTER MARY HARRIET CONDON, A.B.
Graduate Fellow in Biology, St. Louis University (1935)
- SISTER MARY EDMUND FERN, A.M., PH.D.
Professor of Classical Languages and Director of the Department (1935)
- SISTER MARY ADALINE GEMOETS, MUS.M.
Professor of Theory of Music and Director of the Conservatory (1926)
- SISTER MATTHEW MARIE GRENNAN, A.B.
Graduate Fellow in Physics, St. Louis University (1934)
- SISTER MARY ALPHONSINE HENSEN, MUS.B.
Instructor in Organ (1930)
- SISTER MARY JOECILE HUNLETH
Assistant in Conservatory, Violin (1933)
- SISTER LUCY MARIE JANES, A.B.
Graduate Fellow in French, St. Louis University (1934)
- SISTER DOROTHY MARIE JENKINS, LITT.B.
Instructor in Art (1924)
- SISTER MARY DOLORINE MORRISSON, A.M., PH.D. †
Professor of English and Speech and Director of the Department of Speech (1934)
- SISTER MARY FELICITAS QUINLIVEN, A.M.
Instructor in Spanish and Director of the Modern Language Department (1935)
- SISTER MARY ANTONINA RYAN, A.M.
Professor of Biology and Director of the Department (1932)
- SISTER MARY ALONZA SMITH, M.S.
Instructor in Chemistry (1932)
- SISTER MARY AUBERT TENNELLY, A.B.
Graduate Fellow in History
- SISTER MARY FLAGET WALLER, A.B.
Instructor of Education (1931)
- SISTER FRANCES MARIE WALSH, A.M.
Professor of Education (1926)

Webster College
Corporate College of St. Louis University
Webster Groves, Missouri

OFFICE OF THE PRESIDENT

May 13, 1936

FRIENDS OF WEBSTER COLLEGE:

Once again it is my happy task to greet the faculty, students, graduates and friends of Webster College through the pages of this beautiful Annual, affectionately known as THE LAURETANUM.

This year marks the twentieth anniversary of Webster College, an institution of higher education founded by the Sisters of Loretto at the Foot of the Cross, and conducted for the sole purpose of educating young women in Catholic principles and traditions.

Established through pioneering efforts maintained by great sacrifices, developed under able leaders, and nurtured by willing hands, Webster College has left her imprint of culture, character and training upon a seemingly unreconciled and hostile universe.

May 1936 be a reminder of the priceless heritage that is hers. May your every act, thought and word be filled with a love for humanity, with a gratitude to those who have made your education possible. May your earthly and eternal life by DEI GRATIAS be one of everlasting happiness.

George F. Donovan

President
GEORGE F. DONOVAN



REV. JAMES P. O'MALLEY, C.M., A.M.
Professor of Religion and Director of the Department (1924)

REV. T. REYNOLDS, C.M., A.M.
Professor of Religion (1934)
A.M., DePaul University (1917)

REV. L. J. FALLON, C.M., S.T.D.
Professor of Scripture (1932)
A.B., DePaul University, 1926
S.T.D., Collegio Angelico, Rome, 1931

REV. LEO P. FOLEY, C.M., S.T.D.
Professor of Philosophy (1927), Director of the Department (1931)
A.B., St. Mary's College, Perryville, 1912
S.T.D., Collegio Angelico, Rome, 1922

BENEDICT MICHAEL BOMMARITO, A.M.
Instructor in Classical Languages (1935)
A.M., St. Louis University, 1934

REV. MARTIN J. O'MALLEY, C.M., S.T.D.
Professor of History (1932)
A.B., DePaul University, 1907
S.T.D., Collegio Angelico, Rome, 1915

LOUIS E. JAMES, A.M.
Assistant Professor of Physics
A.M., University of Indiana, 1924

MRS. ANNA McCLAIN SANKEY, A.B.
Instructor in Dramatic Art (1916)
A.B., Forest Park College, 1903
Teacher's Diploma, Morse School of Expression, 1915

FREDERIC W. LAIRD, M.S., PH.D.
Instructor in Chemistry and Acting Director of the Dept. (1931)
A.B., University of British Columbia; B. Ch.E., 1923
M.S., University of Washington, 1924
Ph.D., University of Wisconsin, 1928

RALPH BERNARD WAGNER, A.M., E.T.D., PH.D. in Expression
Instructor in Expression
A.M., St. John's College, 1911
E.T.D., Curry School of Expression, 1929

RUSSELL JOSEPH SCHWELLENBACH, A.M.
Instructor in Sociology
A.M., Georgetown University, 1932

CHRISTIAN BONNET, LL.M.
Instructor in French (1934)
A.B., University of Paris, 1896; LL.M., 1900

AGNES C. SCHMIDT, B.S.
Graduate Fellow in Chemistry, St. Louis University, 1934
B.S., University of South Dakota (1933)

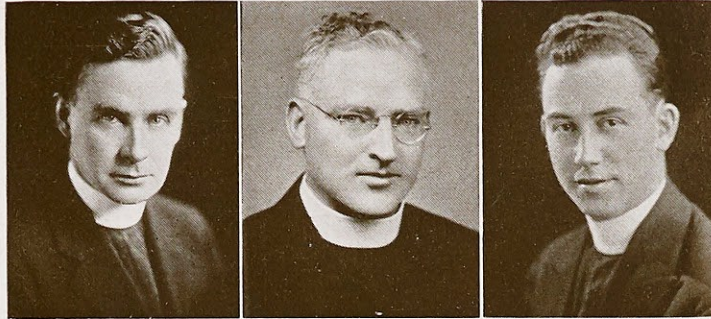
CELIA JEAN McCUE, M.S.
Instructor in Physical Education (1935)
M.S., Kansas State Teachers' College, 1933

HAMILTON THORNTON, A.B.
Instructor in Journalism (1932)
A.B., St. Louis University, 1922

REV. JAMES P. O'MALLEY

REV. T. REYNOLDS

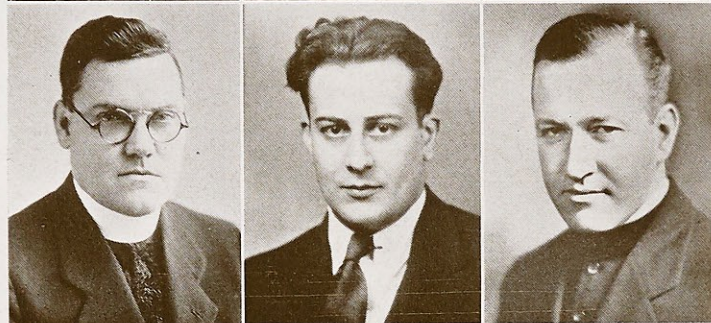
REV. L. J. FALLON



REV. LEO P. FOLEY

B. M. BOMMARITO

REV. M. J. O'MALLEY



LOUIS E. JAMES

MRS. ANNA McC. SANKEY

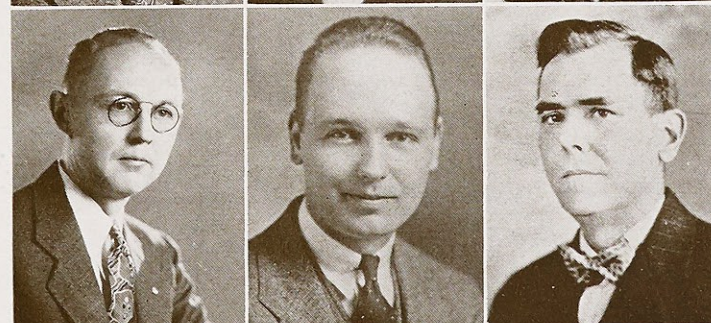
FREDERIC W. LAIRD



RALPH B. WAGNER

R. J. SCHWELLENBACH

CHRISTIAN BONNET

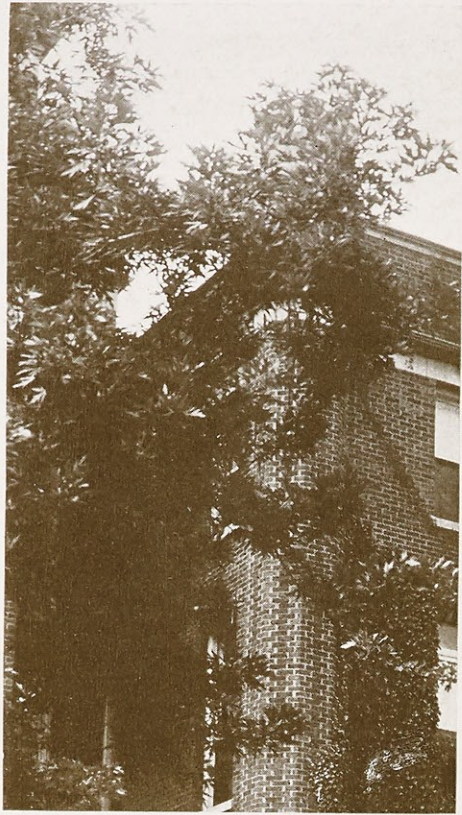


AGNES C. SCHMIDT

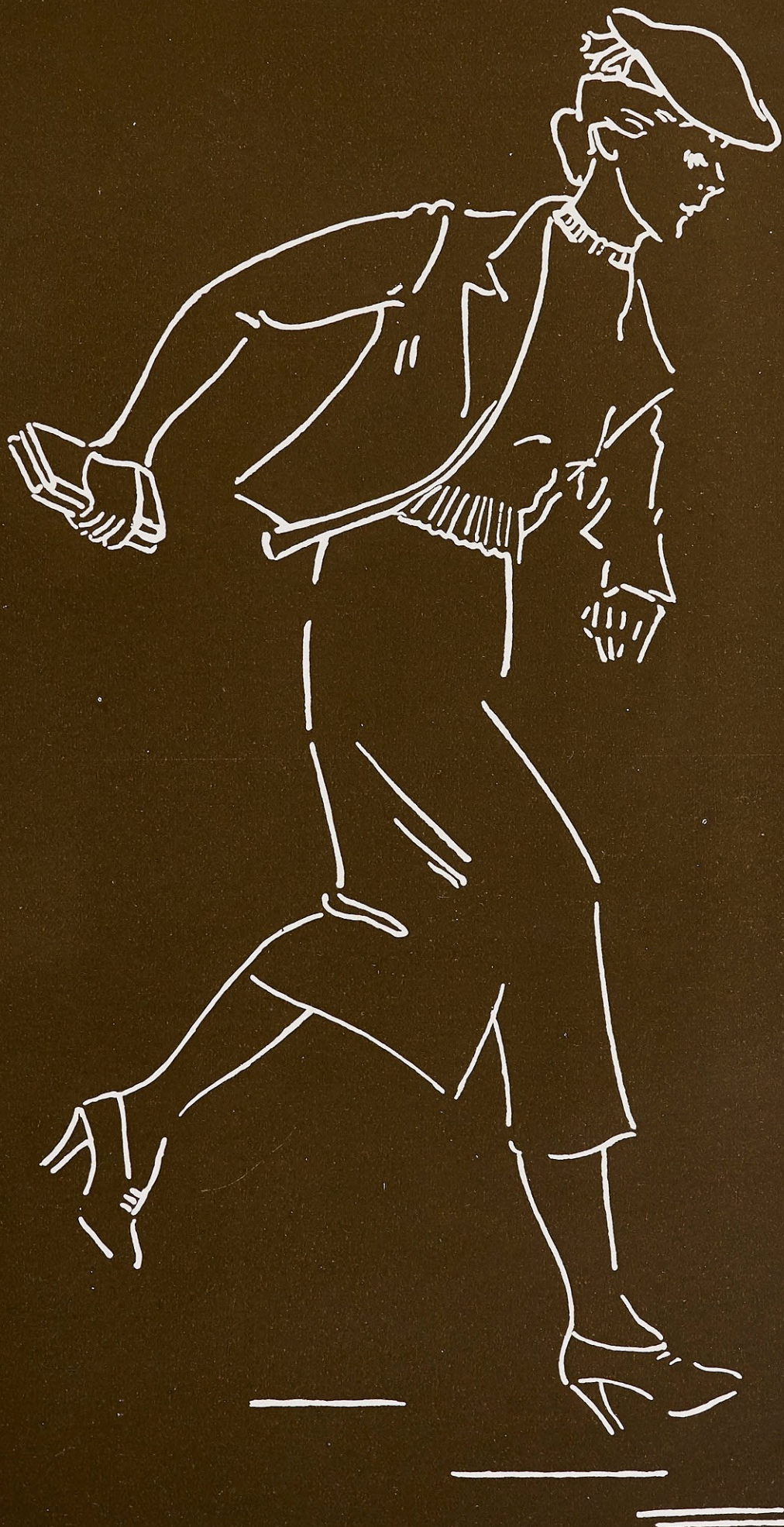
CELIA JEAN McCUE

HAMILTON THORNTON





C L A S S E S





MARY ESTHER LONG

CADET, MISSOURI

A.B. in History and Education

Choral Club, '33, '34, '35, '36
Sodality, '33, '34, '35, '36
Student Spiritual Council, '36
Missouri Section Club, '33, '34, President,
'35, Secretary-Treasurer, '36
Student Council, '35
Classical Club, '34
Music Guild, '33
Class Volleyball, '34, '35
Varsity Basketball, '34, '35, '36
Class Baseball, '34, '35, '36
Biology Club, '34
Athletic Association, Vice-President, '36
St. Louis U. Classical Club, '34



HELEN SCHALLER

UNIVERSITY CITY, MISSOURI

B.S. in Chemistry and Mathematics

Sodality, '33, '34, '35, '36
Chemistry Club, '33, '34, President, '36
Class Vice-President, '36
Mathematics Club, '35, '36
Biology Club, '35
St. Louis Section Club, '34, '35, '36
C.S.M.C., '33, '34, '35, '36

FRANCES GALATI

BELLEVILLE, ILLINOIS

A.B. in English and History

Le Cercle Francais, '33
Classical Club, '34
Short Story Club, '35, '36
Poetry Club, '34
Press Club, '34, '35, '36
Southern Illinois Section Club, '34, '35, '36
Sodality, '32, '33, '34, '35, '36
Orchestra, '34, '35
Music Guild, '33, '34
Biology Club, '34
St. Louis U. Classical Club, '34
C.S.M.C., '33, '34, '35, '36



JANE MARIE KELLY

WEBSTER GROVES, MISSOURI

Ph.B. in English and History

Sodality, '33, '34, '35, '36
Biology Club, '33, '34
Spanish Club, '33, '34
Choral Club, '35
Poetry Club, '36





HELENMARY McLEOD

ST. LOUIS, MISSOURI

Ph.B. in English and History

Le Cercle Francais, '33, '34

Editor of Web, '36

Sodality, '33, '34, '35, '36

St. Louis Section Club, '35, '36



ANN HEALD

DENVER, COLORADO

A.B. in Latin and English

Student Council, '36

May Queen, '35

Sodality, '33, '34, '35, '36

Classical Club, '34, '35, '36

Choral Club, '33, '34

Press Club, '34, '35, '36

French Club, '33, '34

Poetry Club, '35

Loretine Staff, '36

Biology Club, '34

Texas Section Club President, '35, '36

CELESTE GILLESPIE

KIRKWOOD, MISSOURI

A.B. in English and History

Loretine Business Manager, '36
C.S.M.C., '33, '34, '35, Secretary, '36
Classical Club, '34
French Club, '33, '34
Web, '36
Lauretanum, '35
Chemistry Club, '34
Sodality, '33, '34, '35, '36
St. Louis Section Club, '35, '36



MARY CLARE KLINE

ST. LOUIS, MISSOURI

A.B. in English and Latin

Class Secretary, '34
Student Council, '36
Press Club, '35, Vice-President, '36
Classical Club, '34, Secretary-Treasurer, '35, '36
Chemistry Club, '34, '35
Le Cercle Francais, '34, '35
Sodality, '33, '34, '35, '36
C.S.M.C., '33, '34, '35, '36
Choral Club, '33, '34, '35, '36
Orchestra, '34, '35, '36
Class Volleyball, '33, '34, '35, '36
Lauretanum, '35
Loretine, '36





CAROL FOLEY

ST. LOUIS, MISSOURI

A.B. in Latin and French

Class President, '34, '35
Student Council, Treasurer, '35, Faculty Representative, '36, Secretary, '36
Web Staff, '34, Business Manager, '36
Freshman Advisory Board, '36
Sodality, '33, '34, '35, '36
Athletic Association, '33, Treasurer, '34, Vice-President, '35, President, '36
Le Cercle Francais, '33, '34, '35, '36
Classical Club, '33, '34, '35, '36
St. Louis U. Classical Club, '35, '36
Biology Club, '34
C.S.M.C., Treasurer, '34
Varsity Basketball, '33, '34, '35, '36, Co-captain, '36
Class Volleyball, '33, '34, '35
Class Baseball, '33, Captain, '34



PATRICIA BARRY

ST. LOUIS, MISSOURI

A.B. in Spanish and English

Loretine Staff, '36
Classical Club, '35, '36
Sodality, '33, '34, '35, '36
St. Louis Section Club, '35, '36
El Centro Hispanoamericano, '34, '35, '36
C.S.M.C., '33, '34

MARY LOUISE KINKEL

SHREWSBURY, MISSOURI

Ph.B. in English and History

Sodality, '33, '34, '35, '36
C.S.M.C., '33, '34, '35, '36
Loretto Players, '33, '34, '35, President, '36
Chemistry Club, '34
Poetry Club, '35, President, '36
Vodvil Chairman, '36
Lauretanum, '35
Associate Editor Web, '35
Editor Lorettime, '36
Short Story Club, '34, '35, President, '36
Class Vice-President, '35
May Day Maid, '35
Le Cercle Francais, '33, '34
Choral Club, '33



DORIS BICK

ST. LOUIS, MISSOURI

A.B. in English and French

Class Volleyball, '33, '34, '35, '36
Varsity Basketball, '34, '35, '36
Le Cercle Francais, '34, '35, Vice-President,
'36
Class Vice-President, '34, Treasurer, '35
Loretto Players, '33, '34, '35, Vice-President,
'36
Lauretanum, '35
Lorettime, '36





ALMA OTTO

ST. ANTHONY, MISSOURI

B.S. in Biology and Chemistry
Iberia Junior College, Iberia, Missouri,
1933-1934

Biology Club, '35, '36
Chemistry Club, '35, '36
Sodality, '35, '36
Missouri Section Club, '35, '36
C.S.M.C., '35, '36



ELIZABETH HALPIN

BRENTWOOD, MISSOURI

A.B. in Latin and French

Sodality, '33, '34, '35, '36
Student Spiritual Council, '35, '36
C.S.M.C., '33, '34, President, '35, '36
Le Cercle Francais, '33, Secretary, '34, '35,
'36
Classical Club, '34, '35, '36
St. Louis U. Classical Club, '34, '35, Treas-
urer, '36
Biology Club, '34
Press Club, '33, '34, '35, '36
Southern Illinois Section Club, '34, '35,
President, '36

MARGARET CASEY
WEBSTER GROVES, MISSOURI

A.B. in History and English

C.S.M.C., '33, '34, '35, '36
Sodality, '33, '34, '35, '36
Varsity Basketball, '35, '36
Choral Club, '33
Class Treasurer, '33
Loretto Players, '33, '34, '35, '36
May Day Maid '35



LOIS ROBINSON
ST. LOUIS, MISSOURI

A.B. in History and English

Harris Teachers' College, St. Louis, Missouri
1931-1932

Biology Club, '35, '36
Chemistry Club, '36
Choral Club, '35, '36
Classical Club, '34, '35, '36
El Centro Hispanoamericano, '34
St. Louis Section Club, '35, '36
St. Louis U. Classical Club, '35, '36
C.S.M.C., '34, '35, '36





VIRGINIA FABER

WEBSTER GROVES, MISSOURI

B.S. in Music

Music Guild, '33, '34, Secretary-Treasurer, '35, '36

Choral Club, '33, '36, Vice-President, '35, Secretary-Treasurer, '34

French Club, '33, '34

Biology Club, '34

Webster Groves Section Club, '35

St. Louis Section Club, '36

C.S.M.C., '33, '34, '35, '36



LILLIAN SCHWALBE

ST. LOUIS, MISSOURI

Ph.B. in Chemistry and Philosophy

Sodality, '33, '34, '35, '36

C.S.M.C., '33, '34, '35, '36

St. Louis Section Club, '34, '35, '36

Classical Club, '36

Biology Club, '35, '36

Chemistry Club, '33, '36, Secretary, '34, '35

St. Louis U. Classical Club, '36

Class Volleyball, '33

St. Louis U. Prom Maid, '36

MADÉLINE THIELEN

FORT SHERIDAN, ILLINOIS

Ph.B. in French and English

Student Association President, '36
Editor-in-Chief, Laurentanum, '35
Class Vice-President, '33
Associate Editor, Web, '35
Short Story Club, '34, '35, '36
Poetry Club, '35, '36
Le Cercle Francais, '33, '34, '35, '36
Student Council, Faculty Representative, '35,
Vice-President, '35
Student Spiritual Council, '36
Chicago Club, '34, Vice-President, '35, Presi-
dent, '36
Press Club, '33, '34, '35, '36
Chemistry Club, '33
Choral Club, '33
Sodality, '33, '34, '35, '36
Mission Board, '36
Chairman Freshman Advisory Board, '36



MARJORIE WELLS

WEBSTER GROVES, MISSOURI

B.S. in Mathematics and Chemistry

Sodality, '33, '34, '35, '36
Le Cercle Francais, '33, '34, '35, '36
Mathematics Club, '34
Chemistry Club, '33, '34, '35, '36
Loretine Staff, '36
C.S.M.C., '33, '34, '35, '36
May Day Maid, '34





ANNA ROSE PEERCE

GLENDALE, KENTUCKY

B.S. in Chemistry and Mathematics

Class Treasurer, '36
El Centro Hispanoamericano, '34
Sodality, '33, '34, '35, '36
C.S.M.C., '33, '34, '35, '36
Chemistry Club, '33, '34, '35, '36
Mathematics Club, '33, '34, Secretary, '35
Kentucky Section Club, '34, President, '35, '36



CATHERINE DAY

HAMBURG, ILLINOIS

A.B. in Latin and French

Sodality, '32, '33, '35, '36
C.S.M.C., '32, '33, '36, Vice-President, '35
Le Cercle Francais, '32, '33, '35, '36
Classical Club, '33, President, '35, '36
Southern Illinois Section Club, '35, Secretary,
'36
Press Club, '32, '33, '36
Choral Club, '32, '33, '35, '36

MARGARET CHRISTMAN

WEBSTER GROVES, MISSOURI

A.B. in Mathematics and Education

Sodality, '33, '34, '35, '36
C.S.M.C., '33, '34, '35, '36
Class President, '33, Secretary, '35
Student Council, '34
Class Volleyball, '33, '34, '35, '36
Class Baseball, '33, '34, '35, '36
Varsity Basketball, '34, '35, Co-captain, '36
Le Cercle Francais, '33, '34, Secretary, '35, President, '36
Mathematics Club, '34, President, '35, '36
Choral Club, '33, '34



JUNEA DOERR

ST. LOUIS, MISSOURI

B.S. in Chemistry and Mathematics

Class President, '36
Lauretanum Business Manager, '35
Chemistry Club, '33, '34, '35, '36
Mathematics Club, '34, '35
Poetry Club, '36
Student Council, '36
St. Louis Section Club, '34, '35
Class Volleyball, Co-captain, '34
C.S.M.C., '33, '34, '35, '36
Ivy Poet, '36





BERNICE BRUENING

ST. LOUIS, MISSOURI

Ph.B. in English and History

Sodality, '33, '34, '35, '36
C.S.M.C., '33, '34, '35, '36
Le Cercle Francais, '33, '34
Biology Club, '33
Choral Club, '33
St. Louis U. Prom Maid, '36



DOROTHY OELKERS

ST. LOUIS, MISSOURI

A.B. in Mathematics and Education

C.S.M.C., '33, '34, '35, '36
Class Secretary, '36
Choral Club, '33, '35, '36
Mathematics Club, '34, Vice-President, '35,
Secretary, '36
Sodality, '33, '34, '35, '36
St. Louis Section Club, '33, '34, Secretary, '35,
Vice-President, '36
Vodvil Business Manager, '36

ELIZABETH ANNE BAUR

KEOKUK, IOWA

A.B. in Latin and English

Choral Club, '33
Le Cercle Francais, '33, '34
Biology Club, '34
Sodality, '33, '34, '35, Secretary, '36
C.S.M.C., '33, '34, '36, Treasurer, '35
Mission Board, '36
Student Spiritual Council, '36
Classical Club, '34, '35, '36
Press Club, '34, Corresponding Secretary, '35,
President, '36



MARY MARGARET TOBIN

DENVER, COLORADO

B.S. in Music

Student Council, '33
Music Guild, '33, '34, President, '35, Secretary-
Treasurer, '36
Choral Club, '33, '34
Class Basketball, '33
Sodality, '33, '34, '35, '36
C.S.M.C., '33, '34, '35, '36
Colorado Section Club, '34, President, '35
Le Cercle Francais, '33, '34
Biology Club, '34
Orchestra, '33
Lorette Staff, '35, '36
Web Staff, '35, '36





RUTH FABICK

ST. LOUIS, MISSOURI

A.B. in Latin and English

Student Council, '34, '36

Student Spiritual Council, '33, '34, '35, '36

Sodality, '33, '34, Vice-Prefect, '35, Prefect, '36

St. Louis College Sodality Union, Vice-President, '36

Athletic Association, Secretary, '35

Volleyball, '33, '34, '35

Cheer Leader, '33, '34, '35, '36

Choral Club, '33, '34, '35, '36

French Club, '33, '34

Classical Club, Vice-President, '35, '36

St. Louis Section Club, '33, '34, '35, '36

St. Louis U. Prom Maid, '35

MOIRA HAYES, *President*
ST. LOUIS, MISSOURI

GERTRUDE O'ROURKE, *Vice-President*
WEBSTER GROVES, MISSOURI

DOROTHY RYAN, *Secretary*
ST. LOUIS, MISSOURI

ROSEMARY O'DONNELL, *Treasurer*
ST. LOUIS, MISSOURI



JUNIOR CLASS

The Junior Class is very active in the life of the college. It sponsors the Christmas banquet, perhaps the loveliest social function of the year, and has the honor of selecting the Faculty gifts. This year, the class gave to Mother Edwarda and the Sisters stained-glass for the Chapel doors.

The Lauretanum is sponsored by the Junior Class, the staff being composed entirely of Junior members. From their numbers are chosen both the Student Council President for the following year and the May Queen, who presides at the Court of Love and Beauty.

The Juniors each year sponsor the High School Teas, which are held in the spring for the seniors of the various secondary schools in the city and its vicinity. This year they were in the form of musical teas that took place on the afternoons of March 15 and April 26.

The final event with which the Juniors are closely concerned is the Spring Dance, which they give for the Seniors on the evening of May Day. The event, though lovely, is not untinged with sadness since it betokens the parting soon to come.

C L A S S O F T H I R T Y - S E V E N

RUTH GODFREY
ST. LOUIS, MISSOURI



RUTH CROWE
DENVER, COLORADO

GLADYS WENCKER
ST. LOUIS, MISSOURI



EVELYN WASEM
SHREWSBURY, MISSOURI

CAROLYN WELLS
WEBSTER GROVES, MISSOURI



JANE O'DONNELL
WEBSTER GROVES, MISSOURI

ELLA MARIE SMITH
MATTOON, ILLINOIS



DOROTHY KNISLEY
WEBSTER GROVES, MISSOURI

ROSEMARY MOLLER
ST. LOUIS, MISSOURI



CATHERINE PHELAN
ST. LOUIS, MISSOURI

ANASTASIA SCHLUETER
OVERLAND, MISSOURI



VIRGINIA McCORMICK
WEBSTER GROVES, MISSOURI

LUCILLE GEIS
CHICAGO, ILLINOIS



DOLORES BECKER
ST. LOUIS, MISSOURI

GENEVIEVE HAYDEN
MAPLEWOOD, MISSOURI



JUNE STODDARD
WEBSTER GROVES, MISSOURI

MILDRED NIEDZIALKOWSKI
ST. LOUIS, MISSOURI



MARION ROGLES
ST. LOUIS, MISSOURI

BETTY HENRY
ST. LOUIS, MISSOURI

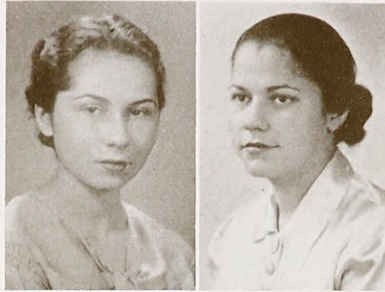


TERESA DEE
ST. LOUIS, MISSOURI

C L A S S O F T H I R T Y - S E V E N

C L A S S O F T H I R T Y - S E V E N

MARY KATE WATERS
KIRKWOOD, MISSOURI



VIRGINIA CARROLL
WEBSTER GROVES, MISSOURI

MARY GALLAGHER
EL PASO, TEXAS



MARY FRANCES HIGGINS
WEBSTER GROVES, MISSOURI

ALICE LOUISE SMITH
ST. LOUIS, MISSOURI



JEANNE DEVANEY
VALLEY PARK, MISSOURI

ROSEMARY NOLAND
ST. LOUIS, MISSOURI



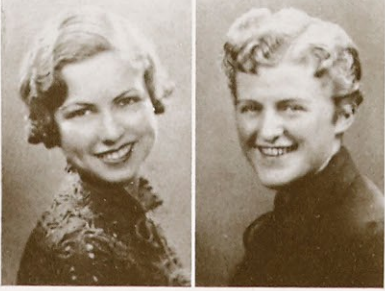
PEGGY STABLER
BIRMINGHAM, ALABAMA

AHREA HUGER
ST. LOUIS, MISSOURI



MERCEDES GRUMMEL
ST. LOUIS, MISSOURI

MARY EVELYN SHERWIN
WEBSTER GROVES, MISSOURI



MARY RITA HUGHES
LEITCHFIELD, KENTUCKY

CARMELITA KLORER, *President*
St. Louis, Missouri

PEGGY GAMP, *Vice-President*
Webster Groves, Missouri

MARY JANE DORSEY, *Secretary*
St. Louis, Missouri

MARIE HERR, *Treasurer*
St. Louis, Missouri



SOPHOMORE CLASS

Following the traditional custom the chief duty of the Sophomore Class was to initiate the Freshmen. The president of the class as general chairman with the assistance of a committee, planned a formal initiation that was held in October in Idle Hour. Each Freshman, dressed as a character from the comics, was made to perform before the Student Council and the student body. After the formal program, regulations as to the dress and conduct of the Freshmen for the coming weeks were read. Each Freshman was given a big sister from among the upperclassmen to advise her and assist her in any way possible. Refreshments were served.

On May eighth the Sophomores sponsored the annual Freshmen-Sophomore Spring Dance in the Pink Room of Loretto Hall.

The Sophomores gave a farewell party to the Seniors in May. The affair was a gay one although it preceded a sad goodbye to the Class of '36. And again through the pages of the *Lauretanum* may we say "Congratulations to the Seniors!" and extend to them our best wishes.

C L A S S O F T H I R T Y - E I G H T



Top Row:

VIRGINIA NASH
CLINTON, ILLINOIS

KATHELYN MADELYN WHITENER
FREDERICKTOWN, MISSOURI

CATHERINE McCARTHY
LITTLE ROCK, ARKANSAS

MARGARET LYNN
CHICAGO, ILLINOIS

RUTH SAVAGE
ST. LOUIS, MISSOURI

MARGARET CHAMBERLAIN
WEBSTER GROVES, MISSOURI

Bottom Row:

MARGARET FINK
KIRKWOOD, MISSOURI

ADELE JOHNSON
CUBA, MISSOURI

ANN HUNEKE
ST. LOUIS, MISSOURI

FRANCES DELMORE
EAST ST. LOUIS, ILLINOIS

MELVA SCHNEIDER
ST. LOUIS, MISSOURI

BARBARA VETTE
KANSAS CITY, MISSOURI

Top Row:

DORIS VOLZ
METAMORA, ILLINOIS

Bottom Row:

MARGARET McBRIDE
LAS CRUCES, NEW MEXICO

HARRIET IZARD
JEFFERSON BARRACKS, MISSOURI

RUTH HAUSER
KANKAKEE, ILLINOIS

LENORE O'CONNOR
ST. LOUIS, MISSOURI

VIRGINIA HERRE
ST. LOUIS, MISSOURI

ROSE MARY HOING
KIRKWOOD, MISSOURI

ELIZABETH ROEHLING
WEBSTER GROVES, MISSOURI

MARY JANE REARDON
ST. LOUIS, MISSOURI

PATRICIA BUETENBACH
LOUISVILLE, KENTUCKY

JANE ROTHER
ST. LOUIS, MISSOURI

HELENE KEANEY
ST. LOUIS, MISSOURI

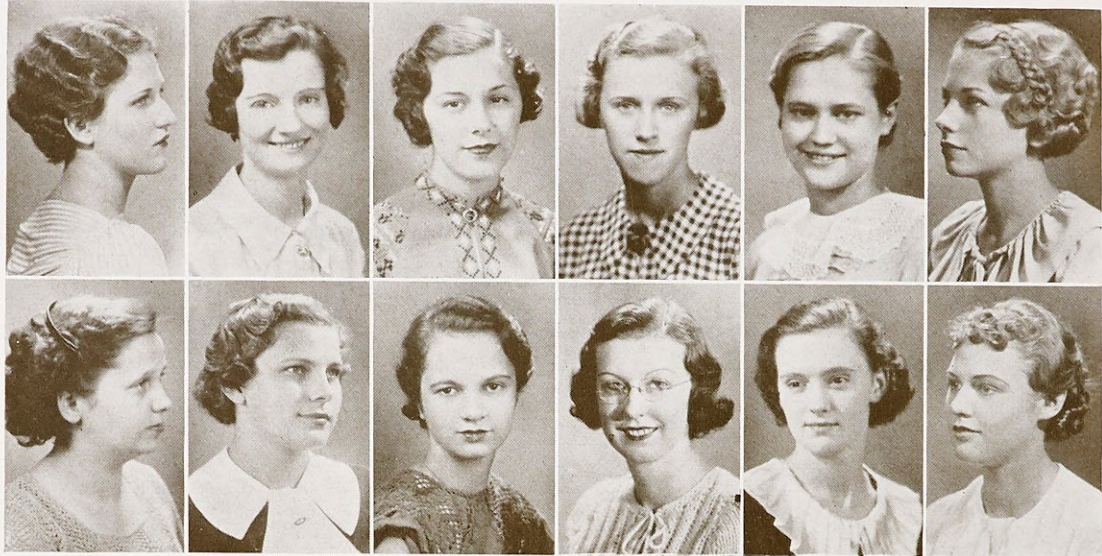
MARY FRANCES WALSH
ST. LOUIS, MISSOURI

DOROTHY KEELEY
EAST ST. LOUIS, ILLINOIS



C L A S S O F T H I R T Y - E I G H T

C L A S S O F T H I R T Y - E I G H T



Top Row:

VERONICA COAD
ST. LOUIS, MISSOURI

EUGENIA PICKEL
ST. LOUIS, MISSOURI

JEAN HENNING
ST. LOUIS, MISSOURI

JANE BEAULIEU
WEBSTER GROVES, MISSOURI

ROSE KNITTEL
ST. LOUIS, MISSOURI

RHETA STINSON
WEBSTER GROVES, MISSOURI

Bottom Row:

JEANETTE THEOBALD
ST. LOUIS, MISSOURI

MARY SLECHTICKY
AVA, ILLINOIS

VIRGINIA TREDINNICK
ST. LOUIS, MISSOURI

GRACE CARPENTIER
WEBSTER GROVES, MISSOURI

THERESA BUCKLER
LORETTO, KENTUCKY

LUCY GRAVES
ST. LOUIS, MISSOURI

MARY MCGINN, *President*
ROCK FALLS, ILLINOIS

MARION DISCH, *Vice-President*
ST. LOUIS, MISSOURI

KATHLEEN NEWSUM, *Secretary*
NEW MADRID, MISSOURI

GEORGEANN GRAY, *Treasurer*
PAWHUSKA, OKLAHOMA



FRESHMEN CLASS

"So much has happened since then," we sigh, as we finger the calendar bearing the date September 19, 1935. That day sixty-four new Freshmen began their college careers, rather timidly, we must admit. Strangers became close friends during that memorable period of Initiation, when everyone else, especially the Sophomores, seemed to resent our presence.

There was barely time to doff our familiar Initiation Week caps before Freshie heads were together planning for the Halloween party—the first big Freshie activity. Can we ever forget the gym that night, with mystery surrounding all—from the smallest pumpkin to the largest cornstalk, or can we remember those costumes? We were the Freshies who bravely passed out the "goodies" to hungry gangsters, señoritas, Dutch girls, Ethiopians, and—the whole crowd.

What's this page marked for? Oh, yes, the Big Sister-Little Sister supper party of March 17. Shure, and old St. Patrick himself would have been justly proud of the cafe that night. From jigs to shamrocks it was a perfect evening for the wearing of the green.

Look at this! A circle around a Saturday in April. . . That must have been the Freshies' entertainment for the Seniors, the treasure hunt.

Automatically the "clock of days" opens to June 5, the last day we are to spend in Webster as Freshies. Happy memories surround us. Ahead, we believe we see an inviting future.

C L A S S O F T H I R T Y - N I N E



AGNES BORGEL
ST. LOUIS, MISSOURI

AGNES FRANKE
ST. LOUIS, MISSOURI

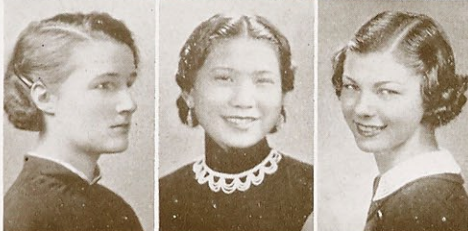
MYRLE MALONEY
RICHMOND HEIGHTS, MISSOURI



ELIZABETH DOERR
ST. LOUIS, MISSOURI

MARY ELIZABETH TOOMEY
MOBILE, ALABAMA

EMMA AZAR
MONTGOMERY, ALABAMA



GENEVIEVE HOGAN
ST. LOUIS, MISSOURI

EPY CHANG
SHANGHAI, CHINA

MARY MARGARET ALCOTT
JOPLIN, MISSOURI



JULIA HANPETER
ST. LOUIS, MISSOURI

ROSEMARY BOEHM
ST. LOUIS, MISSOURI

EMILY JANE FISK
CARLYLE, ILLINOIS



MARTHA CANTALIN
ST. LOUIS, MISSOURI

JEAN GILLESPIE
KIRKWOOD, MISSOURI

BETTY LOU WILLIAMS
STERLING, ILLINOIS



VIRGINIA VERMEERSCH
EAST ST. LOUIS, ILLINOIS

FLORENCE MARTINEK
ST. LOUIS, MISSOURI

MIRIAM RAMROTH
MARION, OHIO

DOROTHY HENSLER
KANSAS CITY, MISSOURI

BERNICE SCHLEICHER
ST. LOUIS, MISSOURI

MILDRED FROESCHL
KANSAS CITY, MISSOURI

JEAN CROWLEY
RICHMOND HEIGHTS, MISSOURI

MARY JO BLETTE
AVA, ILLINOIS

MARY JANE BYRNE
ST. LOUIS, MISSOURI

VIRGINIA WALSH
ST. LOUIS, MISSOURI

EVELYN THORNTON
ST. LOUIS, MISSOURI

DOROTHY MCGILLEN
CHICAGO, ILLINOIS

HELEN DAY
HAMBURG, ILLINOIS

DOROTHY HENDERSON
WEBSTER GROVES, MISSOURI

AUDREY DOUGLAS
ST. LOUIS, MISSOURI

MARY ELIZABETH FLYNN
ST. LOUIS, MISSOURI

MARY LOUISE VIELHABER
ST. LOUIS, MISSOURI

HELEN BUCKLEY
MACON, MISSOURI

MARCELLA DAILEY
EUREKA, MISSOURI

DIONNE PAULEY
ST. LOUIS, MISSOURI

VIRGINIA HERROD
WEBSTER GROVES, MISSOURI



C L A S S O F T H I R T Y - N I N E

C L A S S O F T H I R T Y - N I N E



REGINA MADDEN
ST. LOUIS, MISSOURI

MARYANNE FREIN
BELLEVILLE, ILLINOIS

DORIS ROGLES
ST. LOUIS, MISSOURI



VICTORIA MORTLAND
KIRKWOOD, MISSOURI

LUCILLE CASEY
KIRKWOOD, MISSOURI

KATHLEEN O'ROUKE
WEBSTER GROVES, MISSOURI



JANE McFARLAND
ST. LOUIS, MISSOURI

MARCILE LANG
KANSAS CITY, MISSOURI

ELEANOR MERKEL
ST. LOUIS, MISSOURI



ISABEL HOBAN
ST. LOUIS, MISSOURI

DOROTHY SCULLIN
ST. LOUIS, MISSOURI

AGNES SCHMUKE
JACKSON, MISSOURI



BETTY BUDDY
ST. LOUIS, MISSOURI

JANE BRADY
ST. LOUIS, MISSOURI

ROSE MARY MOERSCHEL
JEFFERSON CITY, MISSOURI



FLORENCE HERRE
ST. LOUIS, MISSOURI

BETTY COOMBS, *Special*
WEBSTER GROVES, MISSOURI

MARY VIRGINIA CASEY
CARLYLE, ILLINOIS



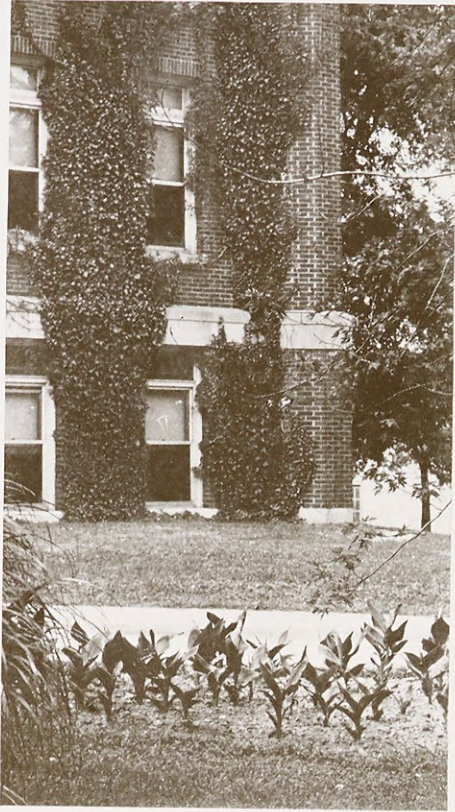
Between the Buildings



The Administration Building as seen from the front campus



The Chapel, towering heavenward



C A M P U S



FALL DANCE

Dancing to the music of Frank Kammermeyer's orchestra, Websterites opened their social season in the Crystal Room of the Forest Park Hotel. The Fall Dance is an informal affair but Webster's Socialites must don a semi-formal, put every curl in place, and dance divinely from nine until twelve. And many of them do it too for this year's attendance was the largest in the history of our Fall Dances.

The Student Council directed the affair with Madeline Thielen as their general chairman. The committees selected by the chairman consisted of Junea Doerr, Carol Foley, and Jean Pickel taking care of the programs and invitations and Ann Heald, Marion Rogles, and Ruth Fabick selecting the place. The committees deserved a great deal of credit for making this dance such a success. An unusual type of invitation was selected to replace the standard informal bid and the programs were an autumn shade of green with a white parchment interlining.

This year the Council also devised a new plan of selecting chaperons. With the exception of Dr. and Mrs. George F. Donovan, the chaperons were former graduates and their husbands. The chaperons invited for this evening were Dr. and Mrs. George F. Donovan, Mr. and Mrs. Norman George, Mr. and Mrs. Joseph Branicle, and Mr. and Mrs. Robert A. Rosenthal.





PROM

Prom '36, as sparkling in reminiscence as in anticipation, an inexpressibly beautiful climax to the year's social functions!

As in the past, the Prom was held at the Missouri Athletic Club; this year on Monday, February third. The entire student body and members of the alumnae were invited to attend. Following the custom begun last year, the chaperons and Junea Doerr, president of the Senior Class, formed a receiving line at the entrance to the ball-room.

Time-hallowed traditions were closely followed by the Seniors to whose guidance this formal dinner dance is annually allotted. The school colors, gold and white, were chosen as the Prom colors. Spring flowers on the tables lent a touch of gaiety to the scene. Bright colors predominated in the gowns lavishly fashioned of velvets, silks, and satins.

Soon forgotten were the bitter winds and deep snow when the smooth, lilting rhythm of Richard Day's orchestra was heard. The clever imitations of popular orchestras coupled with his own inimitable arrangements won for him the title of one of the smoothest orchestras ever to play at a Webster Prom. Midnight arrived all too soon as the gliding couples silently danced the Prom '36 away to the haunting melody of "Lights Out, Sweetheart."

The chaperons for the evening were Dr. and Mrs. George F. Donovan, Mrs. Anna McClain Sankey, Mr. and Mrs. Louis J. Doerr, and Mr. and Mrs. Robert A. Rosenthal.



SPRING DANCE

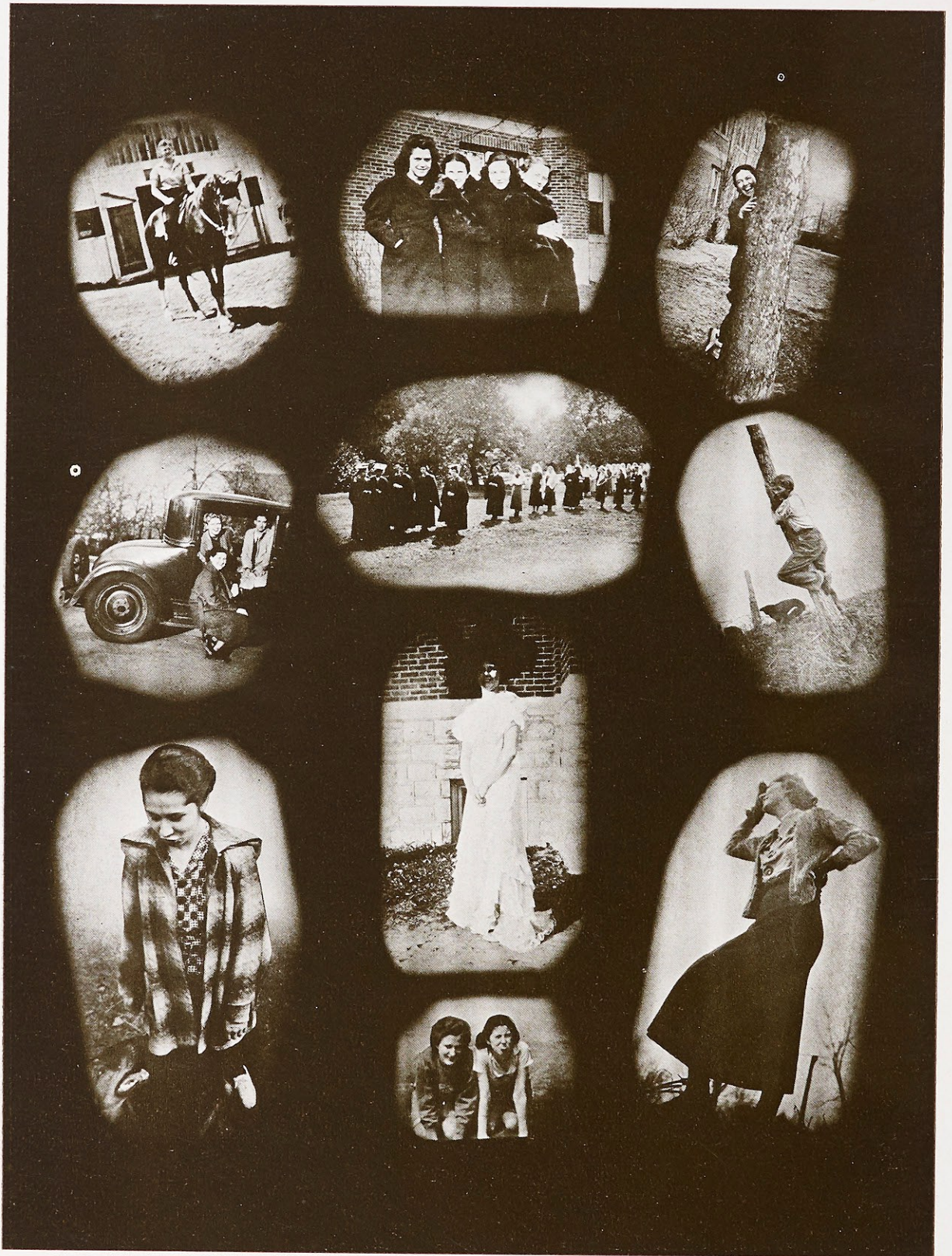
The Spring Dance is the last dance of the year. A formal affair, it has the distinction of being the only one of the three major school dances to be held at the College. Because of limited space the classes are divided and two dances are given. One is the Freshmen-Sophomore Dance; the other, the Junior-Senior Dance.

At Webster it is traditional that each class entertain the graduates with some form of social affair. It has become customary for the Junior Class to sponsor the Spring Dance in honor of the Senior Class.

The underclassmen usually have their dance early in May; and the upperclassmen, a week or two later. Last year the Junior-Senior Dance was held on May 24, the music being provided by Johnny Kammermeyer's Orchestra. May Day was held on Friday instead of Saturday last year, and because of this change the Junior-Senior Dance was given on the evening of the May crowning, adding a new note of festivity to the affair. The Queen of Love and Beauty with the Junior and Senior members of her court attended the dance garbed in their royal attire.

The Pink Room, the scene of the dance, is always filled with a charm, an air of friendliness that is absent from hotel dances. The students, particularly the Seniors, agree that this is one of the most enjoyable events of the year. And as the hour of midnight draws near the happiness of the Seniors is mingled with sadness inspired by the thought that this will be their last dance as students at Webster.





ORCHESTRA

Now in the fifth year of its existence, the Webster College Orchestra continues to grow both in membership and in excellence. From the comparatively small group of eight players who responded to the first practice back in 1931, the orchestra now claims twenty members.

With Sister Joecile as its capable sponsor this organization experienced a successful and progressive year. Besides playing at the Wednesday assemblies, the Lions' Club Banquet, a St. Louis University Classical Club program, and several dramatic productions, the orchestra filled a variety of new engagements. It was called upon to assist the Nerinx Hall operetta, and it accompanied the Choral Club in its presentation of the "Song of Man." Another highlight of the season was its appearance for the first time at the Maryville-Webster game.

The personnel includes these players:

<i>First Violins:</i>	RUTH HAUSER MARYANNE FREIN EMMA AZAR MARIAN CROGHAN FRANCES GALATI ELIZABETH ROEHLING
<i>Second Violins:</i>	MARION ROGLES HARRIET IZARD BERNICE SCHLEICHER VIRGINIA MALLINCKRODT
<i>Violincellos:</i>	MARY CLARE KLINE BETTY BUDDY FLORENCE MCKINLEY
<i>Clarinets:</i>	GEORGEANN GRAY MARY FRANCES HEIDTKAMP
<i>Trombone:</i>	ANN O'DONNELL
<i>Trumpet:</i>	FLORENCE MARTINEK
<i>Bass Violin:</i>	BETTY LOU WILLIAMS
<i>Marimba:</i>	BETTY LOU WILLIAMS
<i>Piano:</i>	MADELYN WHITENER
<i>Directress:</i>	RUTH GUIDO GARIZIO





VODVIL

The adventures of two small town notables "Goin' Thru Town" served as the theme for the 1936 annual Webster College Vodvil. The production was presented on the evenings of November 21, 22, and 23 in the College Little Theatre under the direction of the Senior class. Mary Lou Kinkel served as general chairman and Dorothy Oelkers as business manager.

As usual, the production was an all student activity. The skits were written and directed by the students, while the dance routines were under the direction of Lenore O'Connor.

The two travelers, who came to town to visit relatives, were ushered into "U-nion Sta-shun!" by a chorus of red caps, who secured for them a taxi, and from then on it was "Three About Town." The alumnae obliging supplied a homey atmosphere at "5535 Washington Boulevard," but as far as the two sight-seers were concerned, there was no one at home and they threw in their lot with the taxi-driver, who began to show them the town by way of a little Oriental atmosphere in the "Canton Tea Garden."

The small town alderman and his wife (having turned the trip into a second honeymoon) were in a reminiscent mood and were delighted to see a revival of "Bertha the Sewing Machine Girl" at the Loew's. From there they went to the sublime, for they were allowed to watch a practice of the "Ballet at the Auditorium" because the taxi-man knew a "guy with influence."

On a ride to see how the town has grown since last they were there, they took in the closing exercises of the District School No. 29 somewhere near Shrewsbury, and then rushed back to town to watch the floor show as they had "Dinner at Terrace Garden."

Fortunately the "Muny Opera" was playing one of their favorites that night, "The Merry Widow," and they witnessed a performance. On their way out they chanced upon a session of the League of Nations being broadcast over the taxi-man's radio and they listened to "Politics Thru the Park." As they drove by "Art Hill" they had a glimpse of young lovers romancing with a moon in the background. They were persuaded that their trip would not be complete unless they heard an amateur hour broadcast over station "F-U-Z-Z-Y," sponsored by the O. Watt Fur Co. And so they'll really have something to tell the folks back home, the couple visited the water front and thrilled to the atmosphere of the "Green Lantern" with its specialty dancers.

And so to bed at the "Hotel Statler" where a chorus of pert maids fixed up their room, while the travelers' heads drooped sleepily and the day's events and characters passed before them in their dreams, the Finale of the annual Webster College Student Vodvil.

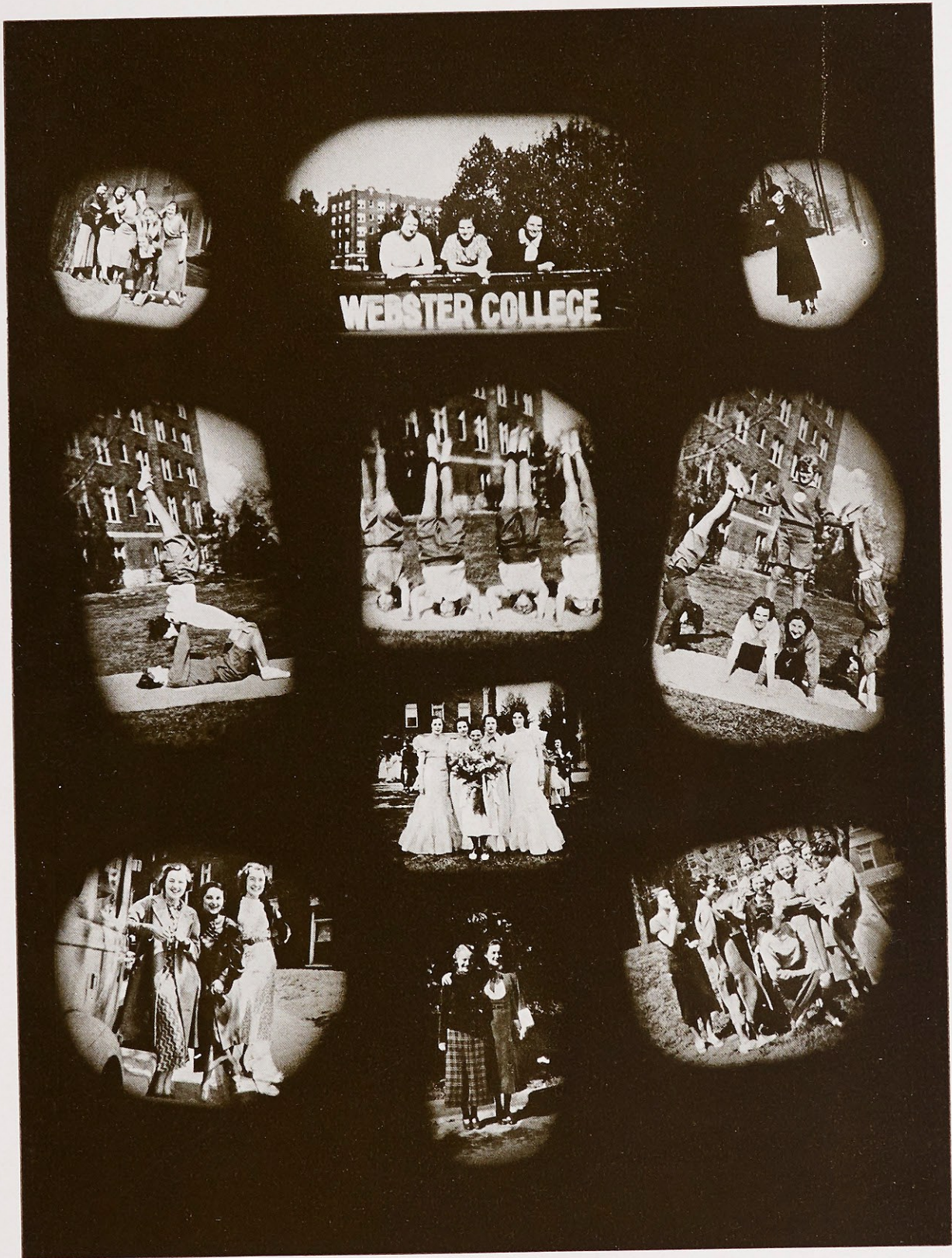


CHRISTMAS BANQUET

The outstanding social event dear to the hearts of all Websterites is the Christmas banquet, a charming occasion marked by gaiety and pleasure. The affair was held in the College Cafeteria, which was turned into a beautifully candle-lit banquet hall, where joyous red and green holiday colors accented the merry season. Holly and pine cones, and red and green strips of artistic crepe paper decorated the long tables, at which places were laid for two hundred students and faculty members. Each guest received a red stocking filled with candy as a favor. Everyone heartily enjoyed the turkey dinner, traditional of the occasion. At the close of the meal, Doctor Donovan presented the seniors with their class pins, treasures long looked for and proudly coveted.

After the presentation, the guests adjourned to Social Hall, when "what to their wondering eyes should appear," but Santa Claus and Mrs. Claus drawn by a crew of reindeer, and loaded with a pack of toys for the good little "freshies," and with more sedate gifts for the faculty. Social Hall was illuminated by a beautiful Christmas tree, and decorated with other Christmas festoons which added to the joyous spirit of all the guests. The juniors, hostesses for the evening, made all the arrangements and provided the entertainment. Webster's spirit prevailed, and a grand time was had by all.

The singing of Christmas carols culminated this lovely evening most fittingly. Each guest departed happily, filled with the spirit of this eventful occasion and cherishing for all times the fond memories endeared to her at this annual Christmas festivity.





The Recessional

MAY DAY

On the afternoon of Friday, May 24, Ann Heald was crowned Queen of Love and Beauty. The coronation, which has been an annual event at Webster since 1925, was held on the south campus under the Queen's tree.

Organ music flooded the air as first the seniors, in white, carrying the daisy chain, formed a guard of honor along the pathway down which the Queen, the Retiring Queen, and the Maids of Honor would promenade.

First came the retiring queen, Dorothy Nelson; then in stately procession the maids to the queen followed. Then, the event of the day—the page announced the new Queen! Preceded by the crown-bearer, the queen-to-be walked to the foot of the throne where the retiring queen crowned her and relinquished the throne to her.



The May Pole Dance

As a grand finale the May Pole dancers with the sun flashing on their costumes of yellow, green, pink, blue, and lavender gracefully executed the traditional May Pole Dance ending in a solo dance by Lenore O'Connor. The program ended in a Pierrot-Pierrette dance. After this, the Queen and her attendants retired.

The court consisted of the following:

- Queen:* MISS ANN HEALD
- Retiring Queen:* MISS DOROTHY NELSON
- Senior Maids:* MISS ELIZABETH CHRISTMAN
MISS HARRIETTE WELSH
MISS DOLORES FALLON
- Junior Maids:* MISS MARY LOU KINKEL
MISS MARGARET CASEY
- Sophomore Maids:* MISS ANASTASIA SCHLEUTER
MISS RUTH CROWE
- Freshman Maid:* MISS MARY FRANCES WALSH



The Queen of Love and Beauty



V. Nash	E. Chang	P. Chamberlain
R. Noland	M. Casey	R. Savage
D. Bick	L. Graves	R. Boehm
J. Pickel	J. O'Donnell	V. Carroll
K. Newsum	M. L. Kinkel	V. McCormick
L. O'Connor	E. Azar	M. Alcott
V. Mortland	F. Delmore	A. Douglas

LORETTO PLAYERS

The Loretto Players have for the past years presented plays of such note, that an enviable standard has been set up and they are now ranked among the leading amateur players in and about St. Louis.

This season the Loretto Players endeavored to uphold the reputation they have gained under the capable direction of Mrs. Anna McClain Sankey. The staging was handled by Sister Dorothy Marie, assisted by the speech majors who took active part in the staging and production of all the plays.

On December 14 in accordance with the custom introduced four years ago, three original one act plays, written by the Playwriting Class of '35 were given. They were *The Grant Family* by Lillian Schwalbe, '36 and *Beauty and the Beast*, and *The Fairy's Birthday*, both written by Elizabeth Ann Christman, '35. A new procedure was inaugurated this year when the audience was asked to vote on the best production and best characterization. Lillian Schwalbe's play, *The Grant Family*, was acclaimed the best production. Patricia O'Neill's portrayal of the mother in this same play, with her comic characterization and excellent pantomimic work, won for her the audience's vote of the best presentation of character. Peggy Chamberlain as the hysterical mother in *Beauty and the Beast* gave a notable performance.

The Freshmen presented their annual play, *A Flash of Red*, a three act mystery drama. Rosemary Boehm in her role of the old Irishwoman showed her ability to do character work; and Kathleen Newsum as the desperate old maid in search of a husband gave a good performance.

The spring work of the entire dramatic group was concentrated on Shakespeare's immortal tragedy, *Romeo and Juliet*. The lighting and stage sets were carried out very effectively. The cast worked earnestly to uphold a high standard of beauty and artistry.



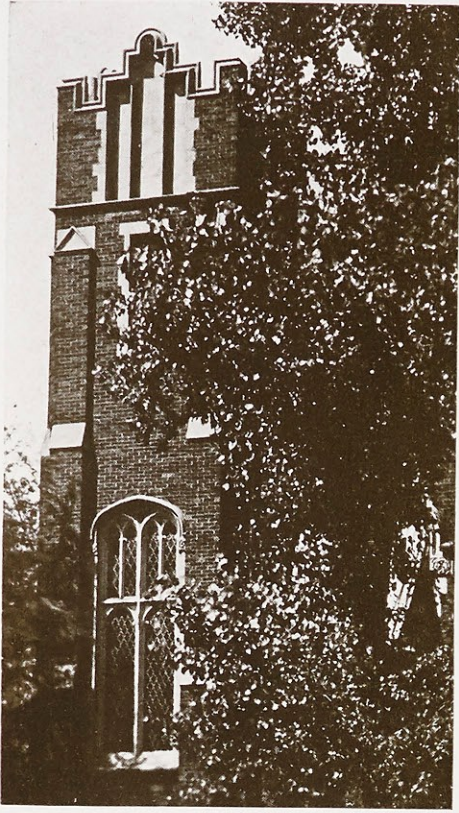
A Scene from Romeo and Juliet
M. Casey as Romeo
D. Bick as Juliet



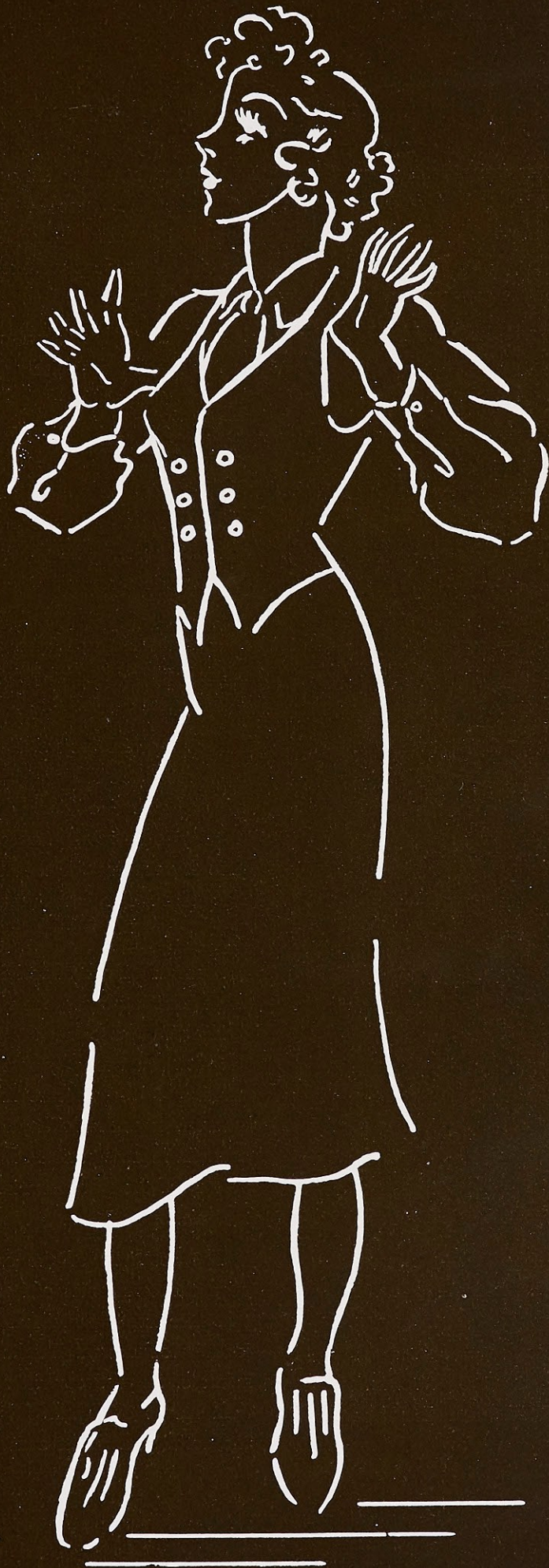
The flower garden



The Administration Building through the trees



ORGANIZATIONS



STUDENT ASSOCIATION

The Student Association is the central organism of the student body, including within its membership every student in the college. During the nine years of its existence, this organization has from year to year come to operate in larger spheres. Its activities and duties have multiplied although its first purposes—the promotion of student welfare and cooperation with the faculty for the common good—have remained fixed.

The Student Association functions, with the assistance of the Dean of Women as its advisor, through its executive body, the Student Council, comprising twelve members

elected and appointed from the four classes. Elected during the last semester of the previous year, the Council begins its work during the summer months with preparations for the welcoming of the new students. It continues throughout the year, financing the various extra-curricular activities, sponsoring one major dance as well as several tea-dances, and, by other social activities, promoting school spirit and solid cooperation in the student body.

As a special project, the Council of '36 undertook the Kid Karnival for the parochial school children of St. Louis and St. Louis County in an attempt to carry out its purpose of enlarging the enrollment of the College through the maintenance of a field secretary.

Another branch of activity took the form of an advisory board constituted to act as a guiding influence on the Freshmen Class until it was thoroughly organized. In December it was the pleasure of the Council to entertain more than eighty members of former councils in recognition of the eighth anniversary of the reorganization of the Student Association.

The activities of the organization close with the ceremonies of May Day, but by that time a new council has been elected and is ready to function. Building on the achievements of its predecessors, each new council then moves on towards greater expansion and activity, as befits a living body.



M. THIELEN <i>President</i>	L. GEIS <i>Vice-President</i>	C. FOLEY <i>Secretary</i>
M. ROGLES <i>Treasurer</i>	J. DOERR	M. HAYES
J. PICKEL	A. HEALD	M. C. KLINE
B. BUDDY	R. FABICK	B. VETTE

SPANISH CLUB

El Centro Hispanoamericano has proven itself a most effective organization in promoting and stimulating interest in the Spanish language and literature.

During the bi-monthly meetings Spanish was used for one-half of the session. The minutes of the meeting were written and read in Spanish. This year the activities of the Club were centered about discussions of Spanish Family Life, noting the contrast to our own. This project was used as a means to cultivate respect for, and an appreciation of, the peculiarities of our Spanish American neighbors.

To foster the spirit of intellectual cooperation among the American Republics, each year the Club takes part in a Pan-American Day program which is sponsored by the Modern Language and History Departments and the International Relations Club. An original one-act play "Her Children Too," written by Patricia Barry '36, was presented on April 15th in the college auditorium. The scene was laid in the California Missions.

This year's open meeting was dedicated to Lope de Vega. The outstanding feature of the program was a talk by Dr. José M. Espinosa of the St. Louis University.

The last meeting, according to custom, was a social hour. Spanish food, Spanish songs and Spanish dances made the evening a most lively and enjoyable one.



*First Row—A. Huger, A. Borgel, R. Madden, M. Dailey, J. Devaney, L. Geis.
Second Row—J. Theobald, E. Roshling, R. Hoising, M. J. Reardon, M. McBride, C. Phelan, President, D. Ryan, R. Godfrey, J. Stoddard.
Third Row—M. Slechticky, P. Barry, R. Hauser, I. Hobson, E. J. Fisk, R. Moller, E. Azar, D. Becker, P. Lynn, M. Niedzialkowski.
Fourth Row—M. Gallagher, J. Henning.*

FRENCH CLUB

Le Cercle Francais is an organization of students of French and other students particularly interested in the French language and literature. The purpose of this Club is to supplement classroom knowledge of French by a study of the customs, history, and literature of France.

This year the first official action of the Club was an amendment to the constitution, making any student of the school eligible for membership. In the early days of the French Club, membership was elective, and was restricted to French majors and minors. Last year, under the new constitution, membership was extended to any student enrolled in an upper division French class.

Le Cercle Francais held meetings twice monthly, conducted in French, and devoted to individual reports on topics of interest in French life or history. As an added attraction, at some of the meetings, French games were played, in an effort to become familiar with the French language.

The enthusiasm of its moderator, M. Christian Bonnet, instructor in French, did much to keep up the spirit of Le Cercle Francais.

At a special meeting in April, Mademoiselle Yvonne Hill, a dancer, gave an informal talk to the members of Le Cercle Francais.

The officers for this year were:

MARGARET CHRISTMAN	/	/	/	/	President
DORIS BICK	/	/	/	/	Vice-President
GERTRUDE O'ROURKE	/	/	/	/	Secretary
MARIE HERR	/	/	/	/	Treasurer



First Row—V. Herre, J. O'Donnell, R. Crowe, L. Graves, M. Whitener, V. Nash, D. Knisely, R. Hauser.
 Second Row—T. Buckler, M. F. Walsh, B. Buddy, C. Foley, E. Halpin, M. Herr, D. Bick, M. Christman, President, M. Thielen,
 M. Woods, J. Rother, M. J. Dorsey, P. Buetenbach, H. Izard.
 Third Row—H. Keaney, V. Coad, B. L. Williams, M. Lang, D. Hensler, M. Froeschl, H. Day, R. Guido, V. Tredinnick,
 M. McGinn, K. O'Rourke, P. O'Neill, L. Casey, J. Crowley, D. Henderson, C. McCarthy, G. O'Rourke.

CAROL FOLEY, *President*

MARY ESTHER LONG, *Vice-President*

GLADYS WENCKER, *Secretary*

BARBARA VETTE, *Treasurer*



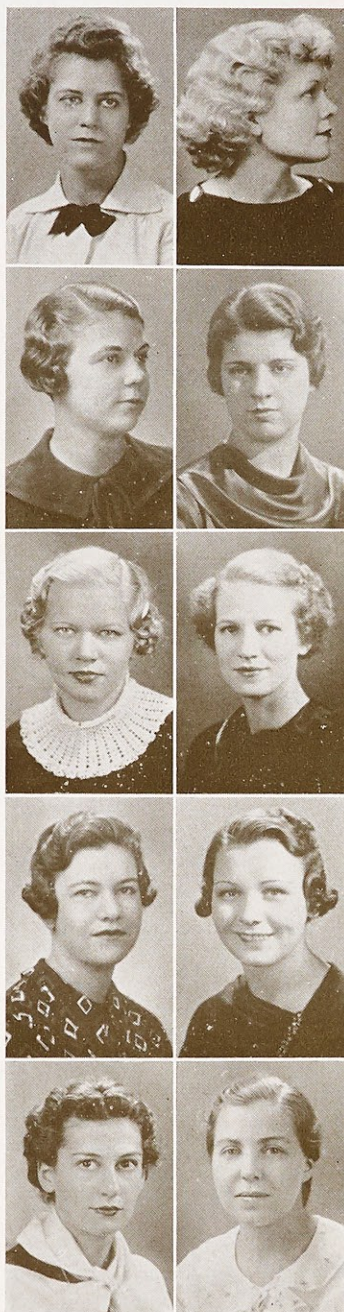
ATHLETIC ASSOCIATION

The Athletic Association of Webster College is the embodiment of the enthusiastic cooperation which is the essence of sportsmanship. From its humble beginning in 1920, when it comprised only those girls actively interested in sports, the Association has gradually developed into one of the largest organizations in the school. In 1929, inactive as well as active members were admitted and a set of rules and regulations was adopted. A point system, governing participation and awards was introduced.

The aim of the Association is to promote health, sportsmanship, scholarship, and skill in the various athletic events and interest in sports of all kinds.

At the beginning of the year, the Athletic Association sponsors the Volleyball Tournament and Basketball, the major sport of the year, occupies the winter months. In the spring attention is turned to baseball, track, and tennis, all activity culminating in Field Day, which with the Athletic Banquet brings to a close the year of sports at Webster. At the banquet awards for successful participation in athletics are given.

This year we welcomed Miss Celia McCue of Emporia, Kansas, as our Athletic Directress, succeeding Miss Dorothy Jane Byrnes. To Miss McCue we owe a debt of gratitude for her enthusiastic effort in the Athletic Department.



S. S. C.

- | | | | |
|-------------|-----------|-------------|--------------|
| R. FABICK | Prefect | B. HENRY | Vice-Prefect |
| A. L. SMITH | Treasurer | E. A. BAUR | Secretary |
| J. ROTHER | | M. FROESCHL | |
| M. E. LONG | | M. THIELEN | |
| A. HUGER | | E. HALPIN | |

SODALITY

The Catholic College, in its endeavor to develop the whole man, lays stress on the moral aim of education as the foundation upon which to build an integrated personality. An education which does not place spiritual values first in importance is not true education.

The Sodality, with its emphasis on personal holiness and active Catholicity, is the laboratory in which the moral and religious theories of the classroom are put into practice. With the motive of charity, "Love of God and neighbor," stressed in their activities for the year, the Sodalists, under the direction of Rev. James E. Cahill, C.M., engaged in various projects, some traditional, some new.

The menace of Communism was stressed throughout the year; a Social Problems Committee made a concentrated study of its anti-religious implications; a lecture on "The Third International" was offered; and pecuniary assistance was sent to Dorothy Day of the *Catholic Worker*.

The Missa Recitata at the monthly Sodality Mass was an innovation of note. So also was the Animated Rosary held in October, a field formation of the rosary by the grade and high school pupils of the Loretto Sisters.

In addition to their own activities, the Webster students played a prominent part in the projects of the College Sodality Union: an Animated Rosary, a dance, a Mission project, and the May Day celebration.

The crowded Sodality year came to a traditional close, the Marion Day Celebration in May, with Mass, the crowning of the Blessed Mother by the retiring Prefect, and the installation of the new Prefect.

BIOLOGY CLUB

Sigma Sigma Sigma, the Biology Club of Webster College, made its formal debut January 12, 1928. Sister Mary Aloyse, former head of the Biology Department, was the charter faculty advisor. The aim of the Club as intended by the charter members is the popularizing of the knowledge of biology and the fostering of interest in its many lines of activity. That the purpose of the Club has been realized by its present members is proved by the activity of this organization.

The Biology Club is now under the direction of Sister Mary Antonina, present head of the Biology Department. The program for the year 1935-1936 varied a bit from that of the past few years. Instead of having lecturers, members of the Club displayed initiative in preparing papers for the monthly meetings. These papers were followed by discussions, which proved quite helpful in the further understanding of the topic chosen for the particular meeting.

The Convention of the American Association for the Advancement of Science held in St. Louis in January provided outside activity for the Club. Sister Antonina and Sister Mary Harriet with some of the members attended the meetings. A report of the displays, of the problems and discoveries presented at the meetings proved interesting for those of the Club unable to attend. A similar report of a field trip made by the Entomology class to the United States Bureau of Entomology in Webster Groves, Missouri, stimulated interest in this field of biology.

The officers for this year were:

JUNE STODDARD	/	/	/	/	/	/	President
DOLORES BECKER	/	/	/	/	/	/	Vice-President
DOROTHY KEELEY	/	/	/	/	/	/	Secretary-Treasurer



Standing—A. Otto, M. McBride, T. Buckler, E. M. Smith, M. Godar, M. Slechticky.
Seated—M. K. Waters, M. Gallagher, P. Buetenbach, D. Becker, P. Lynn, C. McCarthy, J. Stoddard, *President*, B. Vette, M. Herr.

CLASSICAL CLUB

The classics department of Webster College may look with pride to its extra-curricular activity—the Classical Club or Sigma Epsilon Rho, as it is officially known. The Club, now in its eighth year, has in the passing years increased in cultural value. According to the true purpose of an extra-curricular activity the Classical Club purposes to further the study of the classics in supplementing the course of study which the curriculum offers.

The members of the Club include all Latin and Greek majors and minors, and all students who have completed first year college work in the classics.

The plan of the Club this year has been parallel to that of the St. Louis University Classical Club. The subjects of discussion have been focused about life in ancient Greece and Italy. In celebration of the bimillennium of Horace an open meeting was held at which the Club was addressed by an outside speaker, Mr. John B. Quinn, prominent Horatian authority.

The members of the Classical Club are also participants in the activities of the St. Louis University Club, which holds meetings at either the University or one of the corporate colleges. This year Elizabeth Halpin, '36, served as the treasurer of the Club.

The officers of the Club for the year 1935-36 were:

CATHERINE DAY	/	/	/	/	/	President
ROSEMARY O'DONNELL	/	/	/	/	/	Vice-President
ROSEMARY MOLLER	/	/	/	/	/	Secretary



First Row—R. Knittel, R. M. Hoing, T. Buckler, P. Gamp.
Second Row—M. Herr, R. Fabick, E. A. Baur, M. C. Kline, R. O'Donnell, C. Day, R. Moller, D. Ryan, M. J. Dorsey, J. Rother.
Third Row—E. Halpin, C. Foley, A. Heald, L. Schwalbe, L. Robinson, P. Barry, A. Huneke, A. L. Smith, P. Buetenbach.

C. S. M. C.

The Nancy Havern Mission Unit of the C. S. M. C. has endeavored to stress this year the slogan adopted by the Ninth National Crusade Convention last summer, "Catholic Action and Catholic Missions." By prayer and sacrifice we have participated in the work of the exalted hierarchy of the Church—the extension of God's kingdom on earth.

Special attention was given this year to the "must" items as specified in the Crusade Convention. One of the "must" projects of mission giving was a special contribution to the Catholic University of Peking. Other gifts included donations to the Loretto Sisters in China, to the Propagation of the Faith, and to Home Missions. A drive at Christmas supplied many needy families with food, clothing, and toys. Activity meetings of the Unit have been circles for medical mission work.

In addition to lectures and a motion picture our educational program featured a play written and presented by Webster Crusaders. The Crusade was particularly honored this year to have the degree of Paladin of Leadership conferred upon the Moderator of the Unit, Sister Mary Felicitas. The Paladin Honor is one of the three highest degrees that may be conferred in mission work.

The reward was given in recognition of the following achievements: Outstanding work in conformity with the crusade's plan of prayer, study, and sacrifice for the missions. Sister Felicitas now can wear the Paladin Jewel on all occasions when crusaders gather as a unit in local conference meetings and functions and in general conventions of the crusade.

ELIZABETH HALPIN, *President*

DOLORES BECKER, *Vice-President*

CELESTE GILLESPIE, *Secretary*

ROSEMARY O'DONNELL, *Treasurer*



CHEMISTRY CLUB

Sigma Phi Theta, the chemistry club of Webster College, is open to any student or alumna who is interested in chemistry and has completed one year in this subject. The Club has for its purpose to foster an interest in chemistry as applied in the various fields today.

The activities are carried on at regular monthly meetings. This year the Club opened with a field trip to the National Candy Company, where the members saw the manufacture of our common candies. At the end of the trip a three-pound box of candy was presented to each member of the Club.

At the December meeting Mrs. Silkey, dietitian at Desloge and at St. Mary's Hospital lectured on "The Part Chemistry Plays in Dietetics." After her talk Mrs. Silkey answered questions. These questions ranged from "What are the requirements for becoming a dietitian?" to "What kind of breakfast food shall I eat?" The March meeting was given over to a discussion of "Atomic Weights." This year, as usual, the club concluded its activities for the year with an all-day picnic at Corley's country home, where the students gave vent to their spring fever, and acquired their first coat of tan for the season.

The officers of the club for the year 1935-36 were:

HELEN SCHALLER	/	/	/	/	/	President
MOIRA HAYES	/	/	/	/	/	Vice-President
MARY RITA HUGHES	/	/	/	/	/	Secretary-Treasurer



First Row—L. Robinson, B. Buddy, J. Pickel, H. Izard, M. V. Casey.
Second Row—M. R. Hughes, B. Schleicher, M. Rogles, V. Herre, V. Coad, A. Otto, A. R. Peerce.
Third Row—J. Crowley, F. Herre, H. Schaller, F. Martinek, M. Cantalin, D. Hensler, M. K. Waters, L. Schwalbe, M. F. Walsh,
M. McGinn, A. Huger, G. O'Rourke, R. Moerschel, R. Noland, M. Hayes, B. Henry.
Fourth Row—M. Wells, J. Doerr.

POETRY CLUB

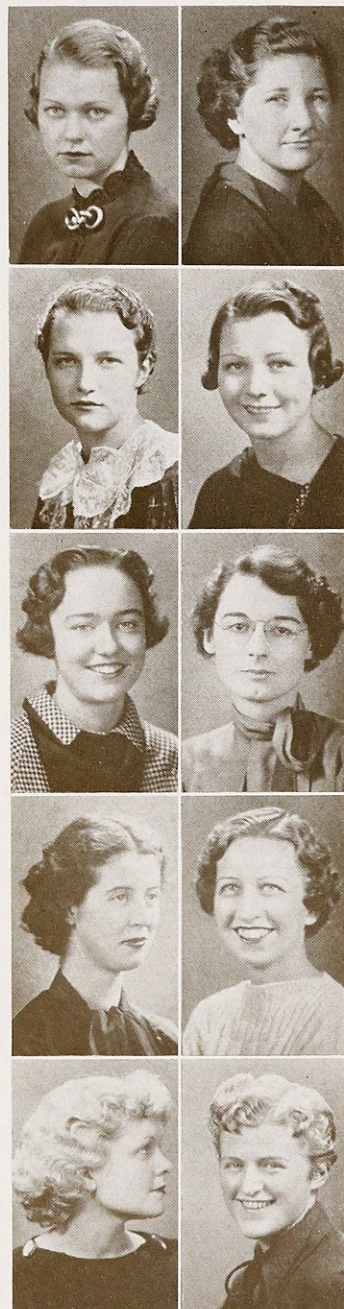
The Poetry Club enjoys the distinction of being the oldest of the Clubs connected with academic activities at Webster. In 1927, the original seven members held their first meeting. They organized the Club in order to teach themselves to appreciate poetry and to spread such appreciation throughout the school. The members originally confined themselves to writing poetry; but, with the further development of the Club, the study of the history of poetry became as important as its creation.

The subject studied in 1936 was *Modern Poets*. The meetings included talks on Sarah Teasdale, Edna St. Vincent Millay, Robert Frost, and other moderns.

Sister Aloysia Marie, Director of the English Department of the College, is the moderator of the Club. Its members are chosen from the three upper classes on the basis of merit alone. Twenty members are allowed by the constitution, but only eleven attained membership. In order to further creative ability, each of the members is asked to bring original verse to every meeting; these verses are collected by the secretary and preserved in the records of the Club. The Ivy Poet is chosen from the senior members of the Poetry Club.

There is now an Alumnae Poetry Group, composed almost entirely of former members of the Poetry Club, which has formed a unit of the Catholic Poetry Society. Elizabeth Christman, a former president of the Poetry Club and a present member of the alumnae group, has recently had a sonnet accepted by the *Catholic World*.

The Club closed its year with a picnic supper on the grounds of Nerinx Hall, at which the election of officers took place.



M. L. KINKEL
President
M. HAYES
Secretary
R. O'DONNELL
G. O'ROURKE
B. HENRY

G. WENCKER
Vice-President
M. THIELEN
J. DOERR
D. KNISLEY
M. R. HUGHES



First Row—M. R. Hughes, A. Huger, H. Schaller, M. Grummel.
Second Row—M. F. Walsh, M. Christman, *President*, R. Godfrey, D. Oelkers.
Third Row—H. Izard, J. Pickel, V. Tredinnick, M. Hayes, G. O'Rourke, C. Wells, A. R. Pearce, M. Rogles.

MATHEMATICS-PHYSICS CLUB

The Mathematics-Physics Club has completed its second year of existence, as such, under the able direction of Sister Borgia, its moderator. However, the Club was founded in 1927 as the Mathematics Club. During this year, 1936, the Club has continued to further its aims to foster a love of Mathematics, and to present to its members the cultural side of the subject, as well as practical applications of Physics to everyday life.

The meetings of the Club, held the first Wednesday of every month in the Mathematics Department, are scenes of lively discussion of some problem or article in one of the sciences. The members present problems in Mathematics, or papers dealing with some phase of Physics, at each meeting, and these are followed by a general discussion. Such topics as the application of "Euler's Theorem," problems in "Infinite Series," discussions on the "Thermometer," and "The Measurement of Lengths" were presented by the Mathematics and Physics Departments. Rev. James Shannon, S.J., of the Physics Department of St. Louis University spoke before the Club on the subject of "The Radio."

The Club closed its year as usual with a social meeting, a supper prepared by a committee of the members, at which officers for the following year were elected.

The officers for this year were:

MARGARET CHRISTMAN	/	/	/	/	<i>President</i>
RUTH GODFREY	/	/	/	/	<i>Vice-President</i>
DOROTHY OELKERS	/	/	/	/	<i>Secretary</i>

MARY LOU KINKEL, *President*

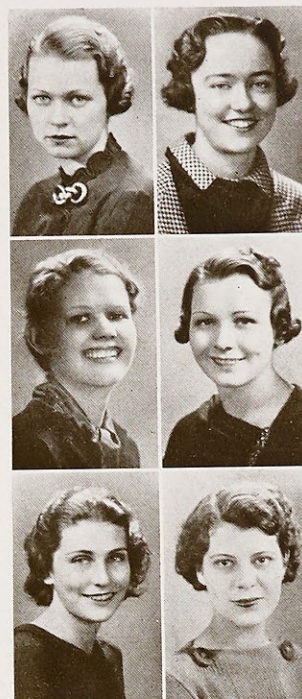
ROSEMARY O'DONNELL, *Vice-President*

MARGARET McBRIDE

MADÉLINE THIELEN

CAROLYN WELLS

FRANCES GALATI



SHORT STORY CLUB

The Short Story Club was organized in May, 1932, for the purpose of studying the works of the great writers as well as the original stories of the members. This year, however, the club has devoted its time to the cultivation of the talent of the members.

Meetings are held bi-monthly at the convenience of the members who are chosen according to their ability; new members being voted in only in January and May. During the summer, meetings in the form of picnic suppers were held for present and former members. Sister Mary Louise, of the English Department, is the moderator of the society.

Since it is an undeclared purpose of every member to secure the publication of her work, contests sponsored by *The Queen's Work*, *The Writer*, Kappa Gamma Pi, the national Catholic honor society, and others were entered with great enthusiasm. The creative ability of the members is evidenced by the fact that several have become "professional" by virtue of the fact that they have sold some of their works for publication. Lately, Frances Galati, Frances Rice, and Mary Lou Kinkel have received recognition.

The December meeting was held in the form of a dinner, with the Reverend Joseph McIntyre, C.M., of *The Vincentian*, as guest of honor, and the present and former members as hostesses.



PRESS CLUB

Although comparatively young in years, the Webster College Press Club is by no means the least active of the Clubs. It was organized in 1932 by Doctor Donovan with the purpose of publicizing Webster College, in foreign countries as well as in the United States, and of promoting Catholic Action.

The Club membership consists of seven seniors, six juniors, five sophomores, and two freshmen. Officers and new members are elected by the Club at the last meeting of every year.

This year the Press Club has sponsored several projects. It set a goal of one hundred articles for the annual Press Club scrapbook. Besides this, an amendment was added to the Constitution to the effect that any member who absents herself from the bi-monthly meetings more than three times a semester be automatically dropped and a substitute be appointed by the chair. This amendment, however, was more a matter of form than of necessity.

The latter part of each business meeting this year was devoted to the writing of articles which were sent to the respective home papers and returned to the Club for the scrapbook. By writing these articles during the meetings, the Club has been able to accomplish more in less time and with less effort than in any previous year.

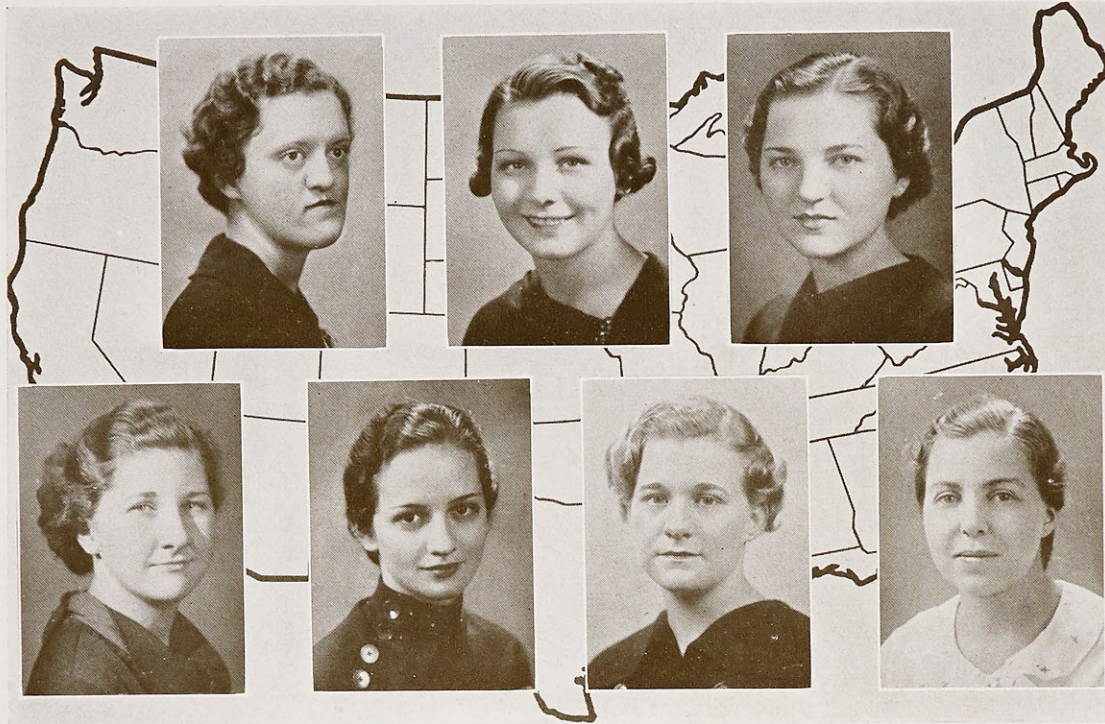
The Press Club members and a few special guests held a picnic supper at Nerinx Hall in April, at which business was forgotten in a jolly good time.

E. A. BAUR <i>President</i>	M. C. KLINE <i>Vice-President</i>	M. R. HUGHES <i>Recording Secy.</i>
M. McBRIDE <i>Corresp. Secy.</i>	T. BUCKLER	M. HERR
L. GEIS	A. HEALD	E. HALPIN
B. HENRY	E. WASEM	B. VETTE
P. GAMP	D. ROGLES	M. MCGINN
J. HENNING	F. GALATI	M. GRUMMEL
M. GALLAGHER	C. DAY	M. THIELEN

MARY GALLAGHER
President of Texas Club

MADLINE THIELEN
President of Chicago Club

ANNA ROSE PEERCE
President of Kentucky Club



GLADYS W. NCKER
President of St. Louis Club

ADELE JOHNSON
President of Missouri Club

BARBARA VETTE
President of Kansas City Club

ELIZABETH HALPIN
President of Southern Illinois Club

SECTION CLUBS

The Section Clubs of Webster College, organized in 1933, have since their origin been striding ahead with leaps and bounds.

The purpose of these Clubs is to increase the enrollment at Webster College by encouraging Websterites to interest prospective students in taking their college course at Webster.

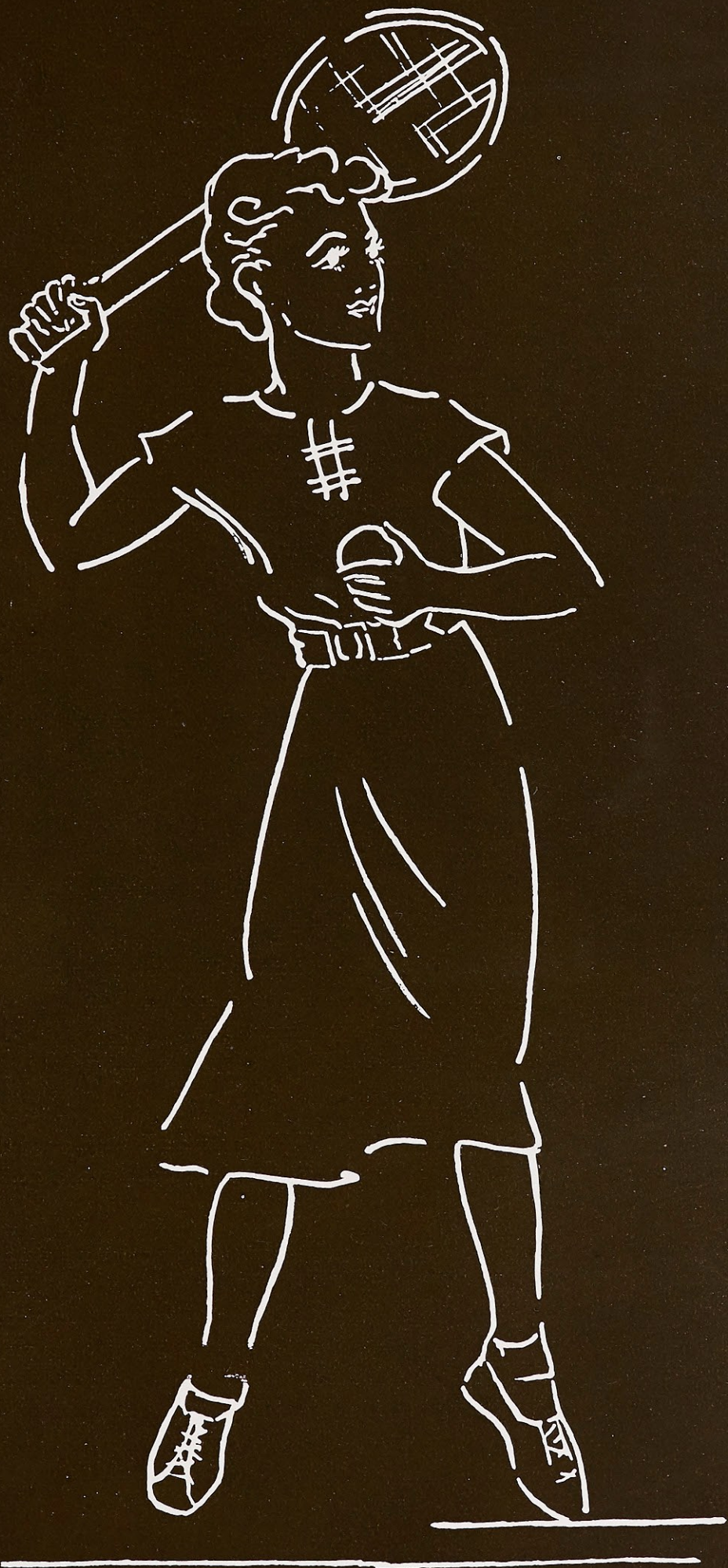
Membership in the Clubs is restricted to the girls who reside in the states which the Clubs include. The Section Clubs cover territory over a great part of the United States.

During the year 1934-35 the members of the Section Clubs have given teas and musicals for prospective students and have personally contacted high school seniors interested in a college education and have received many favorable replies for their zealous efforts.

These Section Clubs have proved a great incentive to girls to attend their high school alumnae meetings and interest members in Webster. They have also proved a great aid in uniting the alumnae of Webster College in various cities throughout the country.



A C T I V I T I E S





M. Christman

Co-Captains

C. Foley

Left to Right—G. Wencker, G. O'Rourke, A. Huger, V. Coad, D. Bick, M. E. Long, D. Becker, M. R. Hughes, V. Carroll, C. Phelan, M. Casey, B. Vette
 VARSITY SQUAD

BASKETBALL

Webster's varsity opened the basketball season on its own floor by playing the Y. W. H. A. The game was fast and smooth, ending with Webster leading 23 to 16.



Miss McCUE, Coach

The next to fall a victim to Webster's flashy sextet was the St. Louis Hockey Club. The count was 32-10. Fouls and fumbling marked the game from the first whistle to the last. In this game Foley with nine field goals set the scoring record of the year for Webster.

The following week Webster met the Y. W. H. A. on their own floor. After four rough and tumble quarters Webster topped the score, 29 to 17.

And still Webster's winning streak continued, for again the St. Louis Hockey Club bowed to a count of 27 to 24. This was, perhaps, the best game of the season. Passes were well placed, shots were accurate, fouls were few, and every player was playing her best basketball. The ball snapped from end to end of the court with breath-taking swiftness and skill.

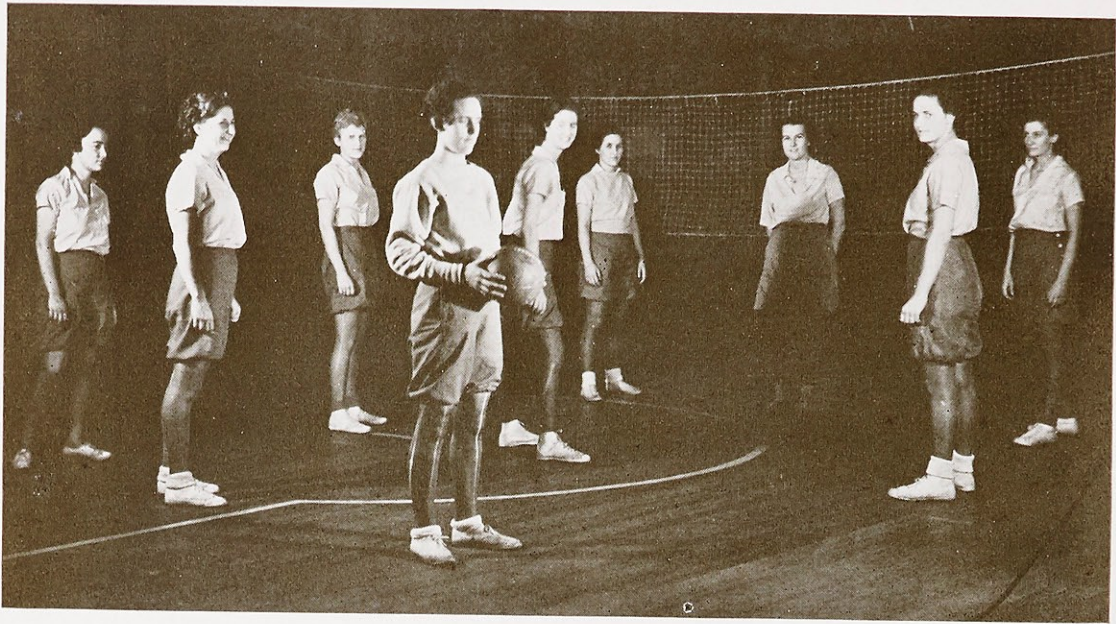
But on Friday, the thirteenth, "Lady Luck" frowned. On that day Webster met her traditional opponent, Maryville, whom she had defeated for the last six years. Maryville launched a surprise attack that defeated Webster 23 to 18. A week later she again vanquished Webster, 24 to 22.

After the varsity's season came to an end the class tournament was played off. Each class team elected a captain. They were as follows: Seniors, Mary Esther Long; Juniors, Gladys Wencker; Sophomores, Catherine McCarthy; Freshmen, Kathleen O'Rourke. In the preliminary games the Juniors defeated the Freshmen, 22-11, and the Seniors defeated the Sophomores, 20-14. Then the two winners played and the two losers did likewise, the Seniors winning the tournament by a count of 25-14. The Sophomores gained third place by defeating the Freshmen, 22-16.

This successful season was under the direction of our new coach, Miss Celia J. McCue. Miss McCue formerly taught at St. Mary's of the Wasatch, Salt Lake City, Utah, and was a classmate of Miss Dorothy Jane Byrnes, whom she succeeds.



Coaching Between Halves



R. M. O'Donnell, G. Wencker, M. R. Hughes, C. Phelan, *Captain*, G. O'Rourke, J. Stoddard, M. Christman, D. Becker, A. Huger.

VOLLEYBALL

The Athletic Association welcomes the incoming Freshmen with the most sociable of games, volleyball. In October everyone is limber from summer sports and free from weighty term papers. The students flock over to the gym to toss the ball across the high net. Timid beginners, genuine athletes, and good mixers all enjoy the game.

Upperclassmen are eager to teach the newcomers how to serve. With increased practice, staggering shots are directed across the net and the opponents bravely raise their hands to return them. As each player moves, after every serve, the change of position and of service offers variety.

Victory requires teamwork. Every member must cover her own territory and, if needs be, assist her neighbor in putting over a shot. "Four hands are better than none" is the motto. Then there is always a foresighted member of the team who calls a warning when a ball heads for the outside court.

As the days pass, the volleyball shoots back and forth across the net with increased skill and rapidity. Net balls are hopefully tossed into play. Interest increases in November as the class games approach.

This year the tournament was played on November 25. That afternoon, the freshmen and sophomores started off in a spirited game, but experience proved effective and the winning sophomores turned to the upperclassmen. The juniors and seniors had united to increase their numbers. The sophomores roused their opponents to put forth their best efforts but the upperclassmen returned the fight with stronger volleys and won the championship.

BASEBALL

The chilly blasts of March have no sooner blown away than the call goes out for the spring practice of our nation's pastime: baseball. The game is not baseball as played by the Major Leagues, but is a modified form more commonly known as softball. Despite the title (as there is nothing soft about it, not even the ground when you're sliding home with the winning run) many a bent and bowed finger is shaped, or better, unshaped, before the season gets off to the proper start. After days of running bases, swinging bats, and controlling curves the teams are ready for the big tournament.

Last year rainy days prohibited the amount of practice to which the teams are ordinarily accustomed and hence reduced the possibility of errorless fielding and walkless pitching. But the powerful drive of the Class of '37 clinched for them the baseball championship at Webster. Competition was keener than it had ever been but the end of the games always found the Sophs at least one run ahead. The most difficult team for them to dispose of was the Freshmen outfit, but even they fell a victim to the Sophs' batting. For the second straight year the Socking Sophs went through a season undefeated.

The season ended with glory for the Champs, freckles for a few, and red noses for all. And it was with blushes concealed beneath sunburn that five Sophs were awarded yellow sweaters, symbolic of hard work and goals attained.



Standing—C. Phelan, J. Stoddard, G. Wencker, G. O'Rourke, M. Gallagher, R. M. O'Donnell, D. Becker.
Seated—M. R. Hughes, B. Henry, Captain, A. Huger.

TRACK MEET

An event anticipated not only by athletes but by other students as well is the college track meet. Held annually in the latter part of May on the campus, it arouses the enthusiasm of the entire school.

After several weeks of strenuous training the participants are well-prepared for the Big Day. The competition begins with the last game of the baseball tournament which has all the aspects of a grim battle. After the game has ended with smiles and congratulations for the winners, a rest period is in order.

As aspirants for track honors become impatient, the field events begin. The fifty-yard dash is very exciting but soon over; the basketball throw is held 'mid wondering gasps of spectators at the prowess of some of their classmates; the standing broad jump allows everyone but participants a chance to rest; the seventy-five yard dash arouses many cheers as the victor breaks the tape; the baseball throw gives those fielders a chance to demonstrate their ability; the running broad jump gives those tall athletes a chance to stretch their legs; the high jump causes great excitement and cheering by the lookers-on who, in spirit, go over the bar, and perhaps fall into the sand-pit, with each jumper; the relay race is the last event of the afternoon and often determines the winner of the class trophy. After the activities are ended all gather around while ribbons are awarded to winners of first, second, and third places in each event.

The Athletic Banquet attended by all the students is a fitting climax to Track Day and the athletic season. Awards are given out by the head of the physical education department—the girls who placed first and second in the track meet are given trophies; small silver basketballs are presented to the six most valuable players; the senior who has been judged the most outstanding athlete for her four years is rewarded with a special trophy; nine girls are awarded baseball sweaters and the 200, 400, and 600 point awards are given to athletes who have earned the required number of points. A happy and exciting day is thus brought to a close.



Finish of the 50-Yard Dash

MUSIC GUILD

The Music Guild, with Sister M. Adaline as its moderator, has been outstanding in furthering a more intensive study of music among its members, and in creating a more widespread interest and appreciation of music.

Music students of Webster College are eligible for membership. Other students may be voted into the Guild at the elections held at the beginning of each semester, after they have passed a specified test given by the moderator of the Guild. Honorary membership is extended to the Music Faculty of the College. The Alumnae of the Conservatory have the privilege of continuing as members with all the rights of the regular members.

The outstanding activity of the Guild this year was a luncheon honoring Doctor Rudolph Ganz, internationally known musician.

Later in the season an afternoon devoted to original compositions was sponsored by the Guild. The compositions were submitted by several members of the Conservatory and were played by the girls themselves.



A. SCHLUETER <i>President</i>	M. E. SHERWIN	M. TOBIN <i>Secretary</i>
R. NOLAND	L. O'CONNOR	D. KEELEY
M. WHITENER	M. FREIN	V. FABER <i>Vice-President</i>
M. J. BLETTE	M. HAYES	M. BARDELMEYER
A. FRANKE		G. GRAY

CHORAL CLUB

Prepared and served by the competent vocal chef of the Webster College Music Department, Sister Paula, the Choral Club of '35-'36 has been quite a dainty dish to set before the school. Its menu of activities has been abundantly and appetizingly flavored with delightful preparations throughout the school year. Programs and entertainments have been spiced with savory servings of the Choral Club and the harmonic hunger pangs of music-loving students frequently appeased.

One of the first delectables offered on the five-course choral banquet was the melodic appetizer, served at the Annual Educational Conference of the Sisters of Loretto.

This satisfying relish created a craving for the main course that was to follow in the presentation of ingredients comprised of delicacies from the Merry Widow Operetta. This course, according to demand for second helpings, proved the crowning glory of the menu.

Tremendously popular and a la mode were the favors furnished by the Webster Choralers over the radio, using for a theme the twentieth anniversary of the College.

An attractive dessert creation was offered recently when the St. Louis University Glee Club presented a pleasing arrangement of male chorus selections. Interspersed with a rare flavoring of American Indian entertainment, this course was outstanding. The recital was embellished afterwards by palatable offerings arranged by the Webster Choral Club.

The last service of this musical banquet was provided by enjoyable "Song of Man" included on the Closing Musical of the Conservatory, thus concluding a most successful and satisfying Choral Banquet.



Members—V. Herrod, P. Buetenbach, V. Faber, M. K. Waters, L. Robinson, A. Borgel, M. L. Vielhaber, R. M. Noland, K. Whitener, M. Hayes, D. Henderson, M. Bardelmeyer, G. Hogan, D. Becker, M. Disch, E. Thornton, M. Maloney, D. Oelkers, J. Stoddard, M. Froeschl.

WEB

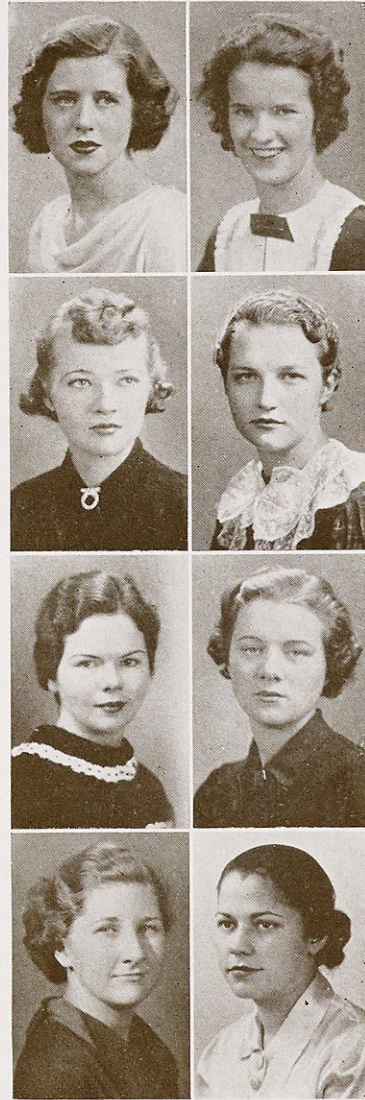
This year *The Web*, the student newspaper of Webster College, celebrates its sixteenth birthday as a college publication. It was introduced to the students in 1920 as a two-column, mimeographed sheet called *Listen* and was edited in turn by the various classes. Very shortly, it grew into a five-column, semi-monthly, printed news sheet. Today *The Web* bears the seal of the Catholic School Press and that of the National Scholastic Press Association.

Last year *The Web* received a distinctive honor, when, for the first time, one of its editors, Mary Carroll, '35, was awarded the Catholic School Press Honor Key.

This year with the beginning of the second semester, a special column was devoted to the seniors, to their plans and their ambitions. "Caught in the Web," reflecting the humorous incidents of college life continues to be one of the most popular columns. "Echoes of the Halls" gives brief notes on the social life of Webster students in feature column form. "Alumnae Notes" is written in the interest of former students. "Club Chat" announces meetings and activities of the various clubs. "Around the Colleges," a comparatively new column, contains unique items from the various college newspapers.

The staff: an editor, two assistant editors, a business manager, athletic editor, circulation manager, and members of the journalism class as reporters give to the students a complete coverage of Webster events.

The journalistic improvements and the recognition which *The Web* has achieved in recent years, may be attributed to the competent guidance of Mr. Hamilton Thornton of the *Globe-Democrat*, instructor of journalism at Webster College.



H. McLEOD
Editor
R. CROWE
C. GILLESPIE
G. WENCKER

C. FOLEY
Business Manager
M. HAYES
J. O'DONNELL
V. CARROLL



LUCILLE GEIS <i>Editor</i>	M. R. HUGHES <i>Associate Editor</i>
G. WENCKER <i>Business Manager</i>	J. O'DONNELL <i>Advertising Manager</i>
A. L. SMITH <i>Circulation Manager</i>	J. DEVANEY <i>Art Editor</i>
M. HAYES <i>Patrons</i>	

LAURETANUM

The 1936 *Lauretanium* staff presents its year's work for your approval. We have endeavored to make it a yearbook that will remain, forever, fond in your memories. Conscious of the elevated and fine ideals of Webster, we have tried, through the *Lauretanium*, to impress on the minds of each student, and carry out the aims, ambitions, and aspirations of our Alma Mater.

We are glad to have had a hand in its publication. For it represents, in our opinion, the modern in a very select way. You will be surprised, no doubt, to find the book without a theme; that, however, is one feature of its newness. An innovation in yearbook publications is the omission of a central theme principally because of the little interest afforded by the reading matter of any annual.

We experimented with the new idea and we feel it has proved most successful. We have aimed to make the 1936 *Lauretanium* a book of the students themselves, a record of the events of this past year in which you, the students, have been so intimately concerned.

The *Lauretanium* staff feels that the many tedious hours it has devoted to this truly representative work of Webster have not been in vain. It, now, is most dear to our hearts. We only hope that you will cherish it as we do, and that for all times, it may remain as a true standard to the ideals of Webster.

LORETTINE

The *Loretine*, our quarterly literary publication, was begun by the students of Loretto Academy in Kansas City in 1907. Its first title was *Small Talk* which was changed to *Loretine* because the name suggested the ideals and aims of Loretto and because it was more appropriate and dignified. When Webster was founded in 1916, the *Loretine* was given to us.

Following a custom established several years ago, the first issue was edited by the Alumnae with Elizabeth Ann Christman as editor-in-chief.

A distinctive feature of the second issue was Christopher Hollis' message written especially for the publication:

"What has really broken down in the modern world is not merely the banking system or the attempt to arrange an international balance of power or anything as superficial as that. Fundamentally what has broken down has been the whole gigantic experiment organizing a human society apart from God. The only sort of recovery that is really worth having is the recovery of the sense that man is not a self-sufficient being.—Christopher Hollis."

Doctor Donovan also honored the second number of the *Loretine* by contributing his radio talk delivered on the subject of the twentieth anniversary of the college.



M. L. KINKEL
Editor
A. HEALD
D. BICK
P. BARRY

C. GILLESPIE
Business Manager
J. DEVANEY
M. M. TOBIN
M. C. KLINE

PATRONS

MR. AND MRS. H. F. BECKER	University City, Mo.
MR. AND MRS. A. J. BRADY	St. Louis, Mo.
DR. AND MRS. E. P. BUDDY	St. Louis, Mo.
MR. AND MRS. J. E. CARROLL	Webster Groves, Mo.
MISSSES ESTELLE AND VIRGINIA COAD	Chicago, Ill.
MR. AND MRS. OLIVER A. FABICK	St. Louis, Mo.
MR. AND MRS. T. M. FOLEY	St. Louis, Mo.
MR. A. FRIED	St. Louis, Mo.
DR. AND MRS. PAUL GALLAGHER	El Paso, Tex.
MR. AND MRS. GEORGE J. GEIS	Chicago, Ill.
MISS DOROTHY GEIS	Chicago, Ill.
MR. AND MRS. S. W. GODFREY	St. Louis, Mo.
MR. AND MRS. HENRY W. HAYDEN	Maplewood, Mo.
MR. AND MRS. T. M. HAYES	St. Louis, Mo.
MR. AND MRS. M. J. HEALD	Denver, Colo.
MR. R. S. HERMAN	St. Louis, Mo.
MR. AND MRS. H. A. HUGER	St. Louis, Mo.
MR. AND MRS. R. E. HUGHES	Leitchfield, Ky.
MISS ROSALIE LEBRUN	St. Louis, Mo.
MR. AND MRS. A. H. LONG	Cadet, Mo.
MR. AND MRS. J. V. MARTINEK	St. Louis, Mo.
DR. AND MRS. R. E. MCBRIDE	Las Cruces, N. M.
MRS. JAMES MCCARTHY	Little Rock, Ark.
MR. AND MRS. J. NIEDZIALKOWSKI	St. Louis, Mo.
MR. AND MRS. P. O'DONNELL	St. Louis, Mo.
MR. AND MRS. W. V. O'DONNELL	Webster Groves, Mo.
MR. AND MRS. HENRY B. OELKERS	St. Louis, Mo.
MR. AND MRS. M. V. PHELAN	St. Louis, Mo.
DR. E. B. REMLEY	Kirkwood, Mo.
MR. AND MRS. FRANK L. ROGLES	St. Louis, Mo.
MR. AND MRS. J. H. SAVAGE	St. Louis, Mo.
MR. AND MRS. L. H. SCHLEICHER	St. Louis, Mo.
MR. AND MRS. B. L. SCHLUETER	Overland, Mo.
DR. AND MRS. C. F. SHERWIN	Webster Groves, Mo.
MRS. G. F. SMITH	St. Louis, Mo.
THE GEORGE F. SMITH CO.	St. Louis, Mo.
MR. AND MRS. JOHN B. STRAUCH	St. Louis, Mo.
MISS MADELINE ELLIS THIELEN	Fort Sheridan, Ill.
MR. AND MRS. S. A. WARDENSKI	St. Louis, Mo.
DR. AND MRS. E. B. WATERS	Kirkwood, Mo.
MR. AND MRS. FRED WENCKER	St. Louis, Mo.
MISS GERALDINE WENCKER	St. Louis, Mo.
MR. AND MRS. THOMAS H. WRIGHT	St. Louis, Mo.
THE SENIOR CLASS	Webster College
THE JUNIOR CLASS	Webster College
THE SOPHOMORE CLASS	Webster College
THE FRESHMAN CLASS	Webster College

PATRONIZE

OUR

ADVERTISERS



CENTRAL
SERVICE

CENTRAL ENGRAVING COMPANY
ST. LOUIS, MISSOURI

THIS SUPERB
SCHOOL ANNUAL
PRODUCED BY
● BUXTON &
SKINNER
St. Louis' Leading
PRINTERS
FOURTH AT OLIVE

● COMPLETE SERVICE • PLANS
ENGRAVING • LETTER PRESS
PRINTING • TYPOGRAPHY
OFFSET LITHOGRAPHY
BINDING • COPPERPLATE
STEEL DIE EMBOSING

COMPLIMENTS

OF A

FRIEND

Compliments of
J. RALPH EDDIE
Fire Chief
WEBSTER GROVES, MO.

Compliments of
BRENTWOOD MERC. CO., Inc.
1005 N. & S. Rd. Brentwood, Mo.

WEb. 1371

Prop. A. FINER

**LORETTO COLLEGE
AND ACADEMY**

Accredited Boarding and Day School for
Young Women and Girls.

EL PASO, TEXAS

Compliments of a Friend

CHestnut 1260

DRINK

CHestnut 1260

**TIP TOP SODA
WATER**

All Flavors

Groceries

FOLSOM MARKET

Meats

3905 Folsom Ave.

WE DELIVER

PRospect 8438

PRospect 8443

Sure-Grip Shade Co.

E. C. BRADY, Mgr.

3881 Bell Ave.

JE. 9716

Specialists in

WINDOW SHADES and VENETIAN BLINDS

Shades Thoroughly Cleaned

Compliments

of

**COOK PAINT AND
VARNISH CO.**



FACTORIES—BRANCHES, in PRINCIPAL CITIES

CULLINANE BROS.

UNDERTAKERS

1710 No. Grand Ave.

Compliments

of

a

Friend

LIBRARY BINDERY

816 Pine Street Central 7286

▼ ▼ ▼

Artistic Craftsmanship for Public, Private and
Institutional Libraries

▼ ▼ ▼

SPECIALIZING IN BINDING NATIONAL
GEOGRAPHIC AND ALL KINDS OF MAGAZINES

▼ ▼ ▼

Books of All Kinds Repaired and Rebound
— At Reasonable Prices —

WE GUARANTEE OUR WORK

AUGUST G. MAASS PLUMBING CO.

CONTRACTING, REPAIRING

PROspect 1393 2824 Cherokee St.

EMIL WACKER, Pres. FRANK KUNDA, Secy.
CLARENCE WACKER, Vice-Pres. EMIL WACKER, JR., Treas.

WACKER - HELDERLE UNDERTAKING & LIVERY CO.

CHAPEL 3654 GRAVOIS AVE. CHAPEL 2531-2537 S. BROADWAY
LACLEDE 7575 LACLEDE 3634 GRAND 2116 GRAND 2117
AMBULANCE AUTOMOBILES *Parking in Rear of Chapel*
STRICTLY UNION ST. LOUIS, MO.

JEfferson 9037

OSCAR STEINBACH & SON

3734-36 Cote Brillante Ave.

GRAND AND UPRIGHT PIANOS

Piano Tuning and Repairing a Specialty

Phone, DIxon 575

HALF MILE INN

On GRAVOIS ROAD, 1 Mile West of Lindbergh

GEO. & LOTTIE KAMPMANN

Delicious Foods Amidst Beautiful Surroundings

WE CATER TO PRIVATE PARTIES OF ALL KINDS

PAGE NINETY-FIVE

NOAH LASKY

Lasky Bros. Ladies' Tailors

410 No. Boyle Ave.
ST. LOUIS

Art Linens - Real Laces - Handkerchiefs and Novelties
Hosiery - Lingerie - Silk Underwear

MADEIRA ART SHOP

Importers

815 LOCUST STREET, ST. LOUIS, MO.

Mail Orders Promptly Filled

CEntral 2458

GRAND 8822

Compliments of

DR. P. A. HASIK

Practice of Dentistry

1915 SIDNEY ST.

ST. LOUIS, MO.

PROSPECT 0393

JULIA BRITTON

ART AND GIFT SHOP

Hemstitching, Buttons, Pleating, Artistic Picture Framing
We Carry a Complete Line of Religious Cards; Cards for All Occasions
2344 S. GRAND BLVD. ST. LOUIS, MO.

MULBERRY 2254

W. H. DIESTELKAMP, MGR.

THE ELMS CONVALESCENT HOME

For Aged and Chronic Cases Open Staff
Graduate Nurse and Medical Supervision

2520 McLAREN AVE.

ST. LOUIS CO., MO.

THE CARL BAJOHR LIGHTNING CONDUCTOR CO.

4051-4057 KEOKUK STREET
ST. LOUIS, MO.

PROSPECT 9681

SCHADY'S BEAUTY SHOP

ALL BRANCHES OF BEAUTY CULTURE

We Specialize in a Marcel Permanent

Hair Bobbing and Finger Waving Our Specialty

2608A CHEROKEE ST.

ST. LOUIS, MO.

Flowers Telegraphed Anywhere

Phone, WEBster 1300

We Deliver

COUNTRYSIDE FLORISTS

H. ERSELIUS, JR.

Cut Flowers - Funeral Flowers and Decorations - Pot Plants
9800 MANCHESTER WEBSTER GROVES, MO.

"Countryside Flowers Make Happy Homes"

M. O'BRIEN

Ladies' Tailoring - Dressmaking - Suits - Coats - Gowns

Formerly of 4271 Olive Street - Now Located at 327 North Euclid

FRANKLIN 5680

ST. LOUIS, MO.

Compliments of

HOWARD EARL DAY

Photographer

CHASE HOTEL

Phones: GRand 2286-2287

PETER NANSEN

Wholesale Dealer In

MEATS & PROVISIONS

2600 HICKORY STREET

ST. LOUIS, MO.

COMPLIMENTS OF . . .

ROSE CALLAHAN

BOYD'S WOMEN'S DEPT.
ST. LOUIS

Compliments of

SARATOGA RECREATION PARLORS

CLARENCE STEIN

2725 Sutton Ave.

Maplewood, Mo.

Compliments of

EMPIRE ROOM

IN THE BROWNSOM HOTEL

7165 MANCHESTER

Compliments of the

ST. JOHN'S HOSPITAL UNIT

of the ST. LOUIS UNIVERSITY SCHOOL OF NURSING

507 South Euclid Avenue

St. Louis, Mo.

VISIT THE . . .

CROSS-ROADS

CLAYTON - NORTH AND SOUTH ROADS

Garden - Dining Room - Sandwiches - Drinks

Curb Service

PHONE CABANY 0678

RES. STERLING 3155

DR. W. C. CARTLEDGE

Chiroprapist and Foot Specialist

HOURS: 10-12, 1-5, 7-8:30 Wed. 10-12 Sat. Till 5 P. M.

216 DELMAR LOOP BLDG.

6651 ENRIGHT AVE.

H. STECHER'S MARKET

FANCY GROCERIES, MEATS AND VEGETABLES

Phone HI 3100

2807 Big Bend Rd.

MAPLEWOOD, MO.

SOUTH SIDE

TERRAZZO, MARBLE & TILE CO.

3829 BATES ST.

ST. LOUIS

RIVERSIDE 0418

Compliments of

A. J. "OTTO" FRANK

CANDIDATE FOR SHERIFF

ST. LOUIS COUNTY

*Daughters of Charity
of
St. Vincent de Paul*

Marillac Seminary

Normandy, Missouri

Phone WEb. 205

Phone HI. 0031

Parker
Undertaking Co.

C. C. ALDRICH, Secy. & Treas.

7356 Marietta Ave.
Maplewood

15 W. Lockwood Blvd.
Webster Groves

PHONE WEBSTER 2555

BEER

JIM'S QUALITY MARKET

MEATS - FRESH FISH - GROCERIES AND FRESH VEGETABLES

All Kinds of Sandwiches

300-02 MARSHALL AVE.

WEBSTER GROVES, MO.

Riverside 6502

Repairing

CHOUTEAU SHEET METAL WORKS

Air Conditioning

Guttering, Spouting and Furnaces

4028 MERAMEC STREET

H. G. Lilliech

"Latem-Teehs"

QUALITY + SERVICE = PRICE

Better Foods For Less at the

DARBY HILL MARKET | **KIENLEN HILL MARKET**

6603 St. Louis Ave.

1827 Kienlen Ave.

EVergreen 8837

EVergreen 8731

DAY AND NIGHT SCHOOL

Day School Restricted to
High School Graduates and College Students

COURSES: Secretarial, Accounting, Civil Service, Court
Reporting Office Machines, Bookkeeping,
Stenographic

Aggressive Employment Service

Telephone, Write or Call for Full Information

SAINT LOUIS BUSINESS COLLEGE

A. G. SCHREIBER, *Supt.* IMOGENE MURPHY, *Prin.*
GRand 2626 Gravois and Jefferson

CENTRAL 1203

CENTRAL 1204

DYER & MOON

Wholesale Distributors
FRUITS AND PRODUCE

1201-03 N. THIRD STREET

ST. LOUIS, MO.

LAWRENCE J. STEFFENS

Architect

We appreciate your patronage

SALA'S CAFE AND GARDEN

1933 So. Kingshighway Phone GRand 6063

WE Specialize in Lunches to Take Home

Also DINING ROOM SERVICE

SUBURBAN FURNITURE CO.

The House of Service

36 W. LOCKWOOD AVENUE

WEBSTER GROVES, MO.

GIESEKING BROS., Prop.

Webster 4177

CENTRAL 5450

CASPER STEHLE BEDDING CO.

Manufacturers of
MATTRESSES, PILLOWS AND BEDDING
19TH AND DELMAR H. C. SMITH, *Pres. and Treas.*, ST. LOUIS

Compliments of

KONCEN MEAT CO.

6210 Easton Ave.
St. Louis, Mo.

Compliments of . . .

JOHN HOGAN

City Clerk
Maplewood, Mo.

Compliments of

WELEK'S SILK SHOP

315 No. 10th St.

Central 6350

Landeau Beauty Salon

405-406 Chemical Building
721 Olive Street

GA 9222

Office Phone WEBster 453 Residence Phone WEBster 453

DR. F. W. SHANNON

Osteopathic Physician and Surgeon
200 WEST LOCKWOOD WEBSTER GROVES, MO.

WM. M. STITES REALTY CO.

LOANS AND INSURANCE
Guaranteed First Deeds of Trust for Sale
2732 SUTTON AVENUE HILAND 0905

ALLEN E. KNIGHT

Big Bend-Rock Hill Shell Service Station
BIG BEND AND ROCK HILL WEBSTER GROVES

VICTOR DRUG CO.

VICTOR F. PLOCH
6116-18 EASTON AVE. 2569 WOODSON ROAD
MULberry 5450 WAbash 536

OLD ORCHARD CLEANERS

Cleaning - Pressing - Altering - Repairing
666 Big Bend Blvd.
REpublic 0911

PRIESMEYER BROS. TRUNK CO.

SAMPLE CASES - TRUNKS - REPAIRING - LEATHER GOODS
1003 Lucas Avenue CHESTNUT 8358

S. G. ADAMS COMPANY

OFFICE SUPPLIES - RUBBER STAMPS
OFFICE FURNITURE
412-414 NORTH SIXTH STREET

WOOD'S GENERAL AUTO REPAIR

For Complete Service on All Makes of
CARS AND TRUCKS FROM TIRES TO TOP
6908 GRAVOIS Phone FL 9611

GLADISH METAL WEATHERSTRIP COMPANY

"You will be glad if Gladish does it"
5445 REBER PLACE
HI 3703 St. Louis, Mo.

"16-Ounce Pound Guaranteed"

MAURER'S CASH FOOD MARKET

MEATS - GROCERIES - PRODUCE
1420 Chouteau Ave. St. Louis, Mo.

JAMES F. CASEY

Wholesale Dealer
EGGS - LIVE AND DRESSED POULTRY
1431 N. Taylor Ave. ROsedale 2357

BREWER'S BICYCLE SHOP

Ready to Serve the Girls of
WEBSTER COLLEGE
280 De Baliviere ROsedale 9399

Shades - Colonial Venetian Blinds - Ornamental Rods
CABANY 1513

RAY H. SUTTER SHADE SHOPPE

24 NORTH MERAMEC AVENUE CLAYTON, MO.
Phone: FRanklin 7813 A. G. STORE

DINZLER'S PACKING HOUSE MARKET

Call us for Service Wholesale and Retail
3878 Easton Avenue St. Louis, Mo.

ROBERT FADEM

TAILOR
Special Service to Women
930 Academy Ave. ROsedale 9621 St. Louis, Mo.

**B & B
ICE CREAM CO.**

*Invites the Students of Webster College to visit
our store at*

BIG BEND & ELM

in
WEBSTER GROVES

~
WE SOLICIT PICNIC ORDERS

CAFE 66

OFFERS BEST OF FOOD
Perfect Mixed Drinks, Wines and Liquor
6455 CHIPPEWA HILAND 9722

ALPHONSE SCHNEIDERHAHN

INVESTMENT SECURITIES
Specializing in Catholic Institutional Bonds
327 Victoria Building, 407 North 8th St.
Phone: CENTRAL 8121 ST. LOUIS, MO.

BONE-MOELLER

Successor to
KAJIWARA STUDIO
Possession of All Kajiwara Negatives
750 CENTURY BLDG. PHONE: MAIN 4327

WATERLOO MILK COMPANY

2753 MAGNOLIA AVENUE
GR 1844 ST. LOUIS, MO.
Wholesale Dairy Products

ST. LOUIS UNIVERSITY

1818-1936

"Oldest University West of the Mississippi"
118 Years of Service

ARTS AND SCIENCES

Pre-Dental, Pre-Engineering, Pre-Legal, Pre-Medical and Regular
College Courses.

COMMERCE AND FINANCE

Day and Night—Separate Courses.

DENTISTRY

Class "A" School. Clinic Facilities Unsurpassed.

EDUCATION

A. B., B. S., in Education.

GRADUATE STUDIES

Leading to Master's and Doctor's Degrees.

LAW

Class "A"

MEDICINE

Class "A"—Immediate Registration Necessary—
Enrollment Limited.

SCHOOL OF NURSING

School for Men—School for Women.

SOCIAL SERVICE

A. B. and B. S. in Sociology and Social Work.
Day and Evening.

For Further Information and Catalogue—Address

REGISTRAR

221 N. Grand Blvd., St. Louis, Mo.

CORPORATE COLLEGES

FONTBONNE COLLEGE (Women)
Wydown and Big Bend.

MARYVILLE COLLEGE (Women)
Meramec and Nebraska.

WEBSTER COLLEGE (Women)
Lockwood Blvd., Webster Groves.

Office Phone, CENTRAL 1070

Residence, FOREST 7040

HENRY P. HESS

Architect

1001-2 AMBASSADOR BUILDING

ST. LOUIS, MO.

~

Compliments of a Friend

Compliments of

LESTON COMPANY

Mayonnaise

St. Elizabeth Academy

ARSENAL NEAR GRAND

ST. LOUIS, MISSOURI

For Resident and Day Students

Compliments of

KRIEGSHAUSER MORTUARIES

4228 S. KINGSHIGHWAY

Compliments

of

PARNELL QUICK

Contractor

Compliments

of the

**ST. LOUIS SCHOOL
OF OCCUPATIONAL THERAPY**

Compliments of

ANDREW McDONNELL

Chief of Police

WEBSTER GROVES, MO.



Put Springtime in Your Home The Year Round
ROLLER AND DUTCH FRILL CANARIES

Large Gold Fish for Your Pool

Water Lilies - Tropical Fish - African Violets

We Invite You to Visit Our Hatcheries

They're Beautiful This Time of the Year

BROESEL HATCHERIES
521 GREELEY AVENUE

Compliments of

Peacock Shoe Company

815 LOCUST



DERMETICS

Arcade Bldg. CHestnut 3860

« « » »

The Natural Way to a Beautiful
Complexion



Asphalt Euilt-up, Tar and
Gravel, Slate and Tile
Roofing and Repairing.
Also shingles and siding
of any description sold or
applied.

Repairing Our Specialty

5080 Delmar Blvd.

ROsedale 1421

NATIONAL REFRIGERATORS CO.

MANUFACTURERS & DISTRIBUTORS

Frick
Refrigeration

Commercial
Refrigerators

827 Koeln Ave.

St. Louis, Mo.

PLAN Your Life Werk . . .

Choose a Medical-Social Profession

OCCUPATIONAL THERAPY
(TREATMENT THROUGH PRESCRIBED WORK)

St. Louis School
Occupational and Recreational Therapy

4567 Scott Ave.

ROsedale 3155

ST. LOUIS FIRE & MARINE INSURANCE CO.

A St. Louis Institution

Engaging its Employees

Purchasing its Supplies

Investing its Assets

IN
ST. LOUIS

• • •

Rated A ★ By Alfred M. Best & Co.

WE BUY AND SELL

CATHOLIC INSTITUTIONAL BONDS

ALSO

Municipal Bonds » » Government Bonds
First Deeds of Trust

« « » »

Complete Prospectus on Request

« « » »

Louis W. Ochs & Associates, Inc.

506 Olive St.

GArfield 5161

St. Louis

ST. LOUIS BAND INSTRUMENT CO.

1113 Olive St.

"The Conn Store"

ELLIOTT & BARRY
ENGINEERING CO.

ENGINEERS AND CONTRACTORS

▼
*Heating, Ventilating, Refrigerating
and Air Conditioning*

▼
4060 West Pine Blvd. ST. LOUIS, MO.

CE 2620

403 Equitable Bldg.

ARTISTE BEAUTY SALON

Across from Famous-Barr

Specializing in All Branches of Beauty Work

REASONABLE PRICES

CANDLE-LIGHT HOUSE

Appreciates the Patronage of

WEBSTER STUDENTS

Compliments of

ST. JOSEPH'S COLLEGE

KIRKWOOD, Mo.

Compliments of

EMIL F. WOLSCHLAGER

Judge of County Court

2nd District

"If You Appreciate Good Roads"

RE-ELECT

JOHN M. CRUTSINGER

as

COUNTY SURVEYOR

Compliments of

Geo. Pickles Real Estate Agency

FENTON, Mo.

AMBROSE MUELLER DRUG CO.

14 N. GORE

18 W. BIG BEND

Established 1896

Compliments of

W. S. STEELE, Collector

UNIVERSITY CITY, Mo.

Loretto Academy

3407 Lafayette Ave.

ST. LOUIS, MISSOURI

Compliments of

S. W. STEIN MEAT CO.

314 So. 21st Street

ST. LOUIS, MISSOURI

Compliments

of

PRENDERGAST LUMBER CO.

826 CASS AVENUE

A. M. I. DISTRIBUTING CO.

2338 Olive St. St. Louis, Mo.

FOR COIN OPERATED PHONOGRAPHS
AND SOUND EQUIPMENT

Call GARFIELD 4020

P. O. HOWE HARDWARE CO.

640 E. BIG BEND BLVD.

WEBSTER 652

BABY CHICKS

Telephone HI. 1154

3150 SUTTON AVE. MAPLEWOOD, MO.

GOVERNMENT POSITIONS

All men—women, age 18 to 50, interested in qualifying for Government Positions should write to Mr. Ozment, Instruction Service, 1205-W Arcade Bldg., St. Louis, Mo., for free information.

FOREST 3204

J. A. RATUSHINSKY

Remodeling Furs

Ladies' Suits and Coats a Specialty

5220 DELMAR BLVD.

ST. LOUIS, MO.

Compliments of

**THE
PASSIONIST PREPARATORY
SEMINARY**

*Very Rev. Philip Gibbons, C. P.,
Rector*

Compliments of

A FRIEND

Compliments of

GEORGE E. WAITE

City Clerk and Collector

WEBSTER GROVES, MO.

Compliments of

JEFFERY RIDING STABLES

HILAND 9831

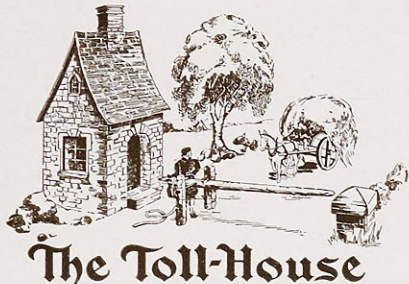
Nearest Stables to Forest Park

BROADWAY LAUNDRY COMPANY

R. L. WEINERT

Seventh at Barton Street

We Thank You For Your Enthusiastic
Welcome



WEBSTER'S NEW RESTAURANT

Where Old Orchard Meets Big Bend

Compliments of

**Crown Cleaners and
Dyers**

THE REVISTA CATHOLIC PRESS

Printing and Binding

Phone: M-2165 Write: P. O. Box 1572
EL PASO, TEXAS

Compliments of

DIECKMAN

PHOTOGRAPHERS FOR 1936 LAURETANUM

Compliments of

FRED ZINGRE

ROYAL TYPEWRITER COMPANY, INC.
116-120 North Tenth Street
CHestnut 6626

Compliments of

OLD ORCHARD DRUG STORE

Phone: KIRKWOOD 678

EMIL BOPP

PAINTING, DECORATING AND GLAZING
In All Its Branches

405 W. ARGONNE DRIVE KIRKWOOD, MO.

Phone: CHESTNUT 5644

MORGAN ENGRAVING COMPANY
WAX PROCESS ENGRAVERS
Wm. MORGAN, JR., *President*

914 PINE STREET ST. LOUIS, MO.

Compliments of a Friend

CAbany 4034

PRATZEL'S BAKERY

We Specialize in Baking Cakes For All Occasions
DELIVERY SERVICE

611 Eastgate Ave. St. Louis, Mo.

INSURED INVESTORS, Inc.

Personal Trust Service

We have two positions open in our sales organization.

J. B. KUSTER, Manager

Telephone CH 2181

Room 514, 515 N. Seventh St.

Established 1882

DAY RUBBER CO.

408 OLIVE ST.

GA 1753

"Buy from 'DAY' to-day"

H. L. KREBS STUDIO

Miniatures — Copies from Photographs in Black or Sepia,
Water Color or Oil
Portraits in Oil — After Photographs
Restoration of Old Photographs and Paintings
3644 BOTANICAL AVENUE
PROSPECT 5663 ST. LOUIS, MO.

MAIn 5215

Laundry Dryer & Heating Co.

Direct Motor Driven and Gas Heated
Laundry Machinery and Appliances
121 NORTH ELEVENTH STREET
JAS. K. KIDD, Manager ST. LOUIS, MO.

Best Wishes to
WEBSTER COLLEGE
INVESTORS SYNDICATE

Founded 1894
LIVING PROTECTION
W. L. McILROY, Mgr.
Boatmen's Bank Bldg. ST. LOUIS, MO.

NORMANDY SERVICE

7251 Natural Bridge Road - - - - - Normandy, Mo.
Texaco Products - Expert Lubrication - Firestone Tires
and Accessories

ST. JOSEPH'S ACADEMY FONTBONNE

Wydown and Big Bend Boulevards - - - - - St. Louis, Missouri
A CATHOLIC HIGH SCHOOL FOR GIRLS
Conducted by the Sisters of St. Joseph of Carondelet

MAIn 5368

THE FLOOR-WALL CORPORATION

FLOORINGS AND WAINSCOTINGS
1530 Olive Street St. Louis, Mo.

EDWARD'S MARKET

3203 So. Grand PROspect 8208 *Delivery Service*
FISH, POULTRY AND GAME IN SEASON
Quality Meats, Fresh Fruits, Vegetables and Groceries

CENTRAL PLEATING & BUTTON CO.

J. WINESUFF
Cloth Covered & Ivory Rim Buttons Cloth Covered Buckles
Also All Kinds of Pleating
720 Washington GARfield 1577

Accounting Secretarial Practice
Business Administration

THE MODERN BUSINESS INSTITUTE

W. A. KAUFMAN, Principal
7171 Manchester Ave. Maplewood, Mo.
"At The City Limits Loop"

We Provide a Thorough Business Training for
Ambitious Young Men and Women

DAY AND EVENING SESSIONS

TOWN CRIER SODAS

Fruit Flavors - Ginger Ale - Lemon Dry - Lime Rickey
Root Beer - Seltzer - Lithiated Lemon
WELLSTON BOTTLING WORKS, INC.
7514 Natural Bridge Rd.
DAVID J. MASSA, Pres.
Mulberry 3500

WHITING

AUTOMATIC COAL STOKERS

More Heat for Less Money

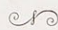
THE SHEA-BROWNELL CO.

CHESTNUT 3114 915 OLIVE STREET

EMIL FREI, Inc.

3934 South Grand Blvd.
ST. LOUIS, MO.

AMERICAN SODA WATER CO.


1528 Ann Avenue

MAin 3059

MAin 3070

E. GUCKENHEIM BAKERS' SUPPLY CO.

Dealers and Jobbers in

Bakers, Hotels, Confectioners, Ice Cream
Candy Manufacturers and Fountain Supplies

14-16 NORTH SECOND STREET

PLUMBING

WEBSTER 901

JAMES F. WILSONHOLME

770 Greeley Avenue

Good Plumbing is essential—In the end it costs less

WEBSTER GROVES - - - MISSOURI

WEbster 3039-M

AL KUHN

PAINTER PAPER HANGING

1041 KUHLMAN : : WEBSTER GROVES, MO.

RAY'S PHOTO SHOP

Portraits, Commercial and Photo Finishing

ARTISTS' SUPPLIES

Picture Frames Made to Order - - We Deliver

11 Gray—1 Block east of Union Electric

WEbs'er 2591

GARFIELD 3805

Res.: RIVERSIDE 5357

J. W. RHEA

*Manufacturers' agent for Laboratory Furniture,
Scientific Apparatus and Supplies*

715 Washington Ave.

St. Louis, Mo.

COOKE-STUBINGER

HOTEL KITCHEN EQUIPMENT CO.

1316 Delmar Blvd. : : : St. Louis, Mo.

High Grade Food Service Equipment for

Schools, Colleges, Institutions, Hotels and
Restaurants

Makers of Zinc Cornet and Collar Plates

GARFIELD 2149

CLIFTON HEIGHTS MOTOR

INCORPORATED

5970 Southwest Avenue • Saint Louis, Missouri

New and Used Cars

AUTHORIZED FORD DEALERS

Telephone: STERLING 3100

CHRISTIAN STOCKE R. A. BUERMANN T. MANSON PEGRAM
President Vice-President Secretary

**ANDERSON-STOCKE-BUERMANN
REALTY COMPANY**

Real Estate and Loans

MAIn 4595-4594-4596

808 CHESTNUT STREET

KALI - STEN - ICKS

The Perfect Shoe for The Modern Miss

HAAS SHOE CO.

TAYLOR AND DELMAR

GRAVOIS MUSIC SHOP

Jos. ERMANTRAUT, Mgr.

Blessing Trumpets, Saxophones, etc.
Corsani Piano Accordions

Instruments Rented or Sold

E. Z. Terms

SHEET MUSIC

4650 GRAVOIS

RI 1007W

What Did You Say?

A hearing-aid with too much volume . . . not enough volume . . .
noise . . . all cause confusion and that oft-repeated question.

RADIOEAR ELIMINATES THAT EMBARRASSING QUESTION

because it is built for your individual needs thus giving you the
correct volume, tone, clearness and quietness. Besides it is the
only hearing-aid with patented built-in telephone feature. Stop in
. . . let us demonstrate. No obligation.

CENTRAL ACOUSTIC CO.

705 OLIVE STREET

CENTRAL 8678

OSAGE GOLF COURSE

OSAGE HILLS, KIRKWOOD, MO.

Family Golf Membership - \$33.00

1936 Season

Guest Fee Sat., Sun., Holiday - 1.00

Week Days - .75

For Further Information Call

FRANK R. FOGERTY - KIRk 184 - KIRk 1339

MELETIO SEA FOOD CO.
822-26 North Broadway CENTRAL 7310
For All Departments
F I S H
Fresh, Salted, Smoked, Pickled, Canned
Oysters, Fish and Sea Food
WHOLESALE AND RETAIL

Compliments of
JUDGE FRED E. MUELLER
CLAYTON, MO.

Compliments of
A FRIEND

Compliments of
F. NORRIS
Building Commissioner
WEBSTER GROVES, MO.

Compliments of
Hensgen Grocery Co.

Compliments
of a
FRIEND

Compliments of
MAX ALFEND
1527 Market Street
ST. LOUIS, MO.

Compliments
of
DR. LUKE B. TIERNON

L. D. AMES Phone: RE 1414 H. C. AMES

AMES & AMES
GENERAL CONTRACTORS

Repairs and Alterations
124 W. Jackson Road Webster Groves, Mo.



NERINX HALL

HIGH SCHOOL DEPARTMENT

of
WEBSTER COLLEGE
WEBSTER GROVES, MO.

