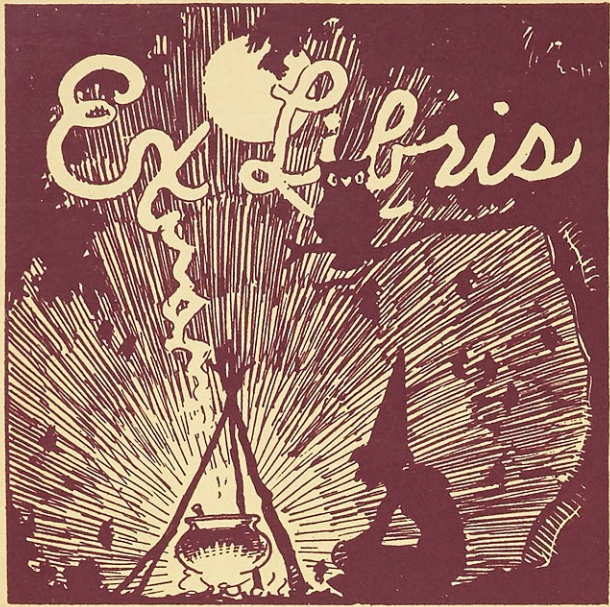


Sanctuarium



1929



WEBSTER COLLEGE LIBRARY
470 EAST LOCKWOOD
ST. LOUIS, MISSOURI 63119

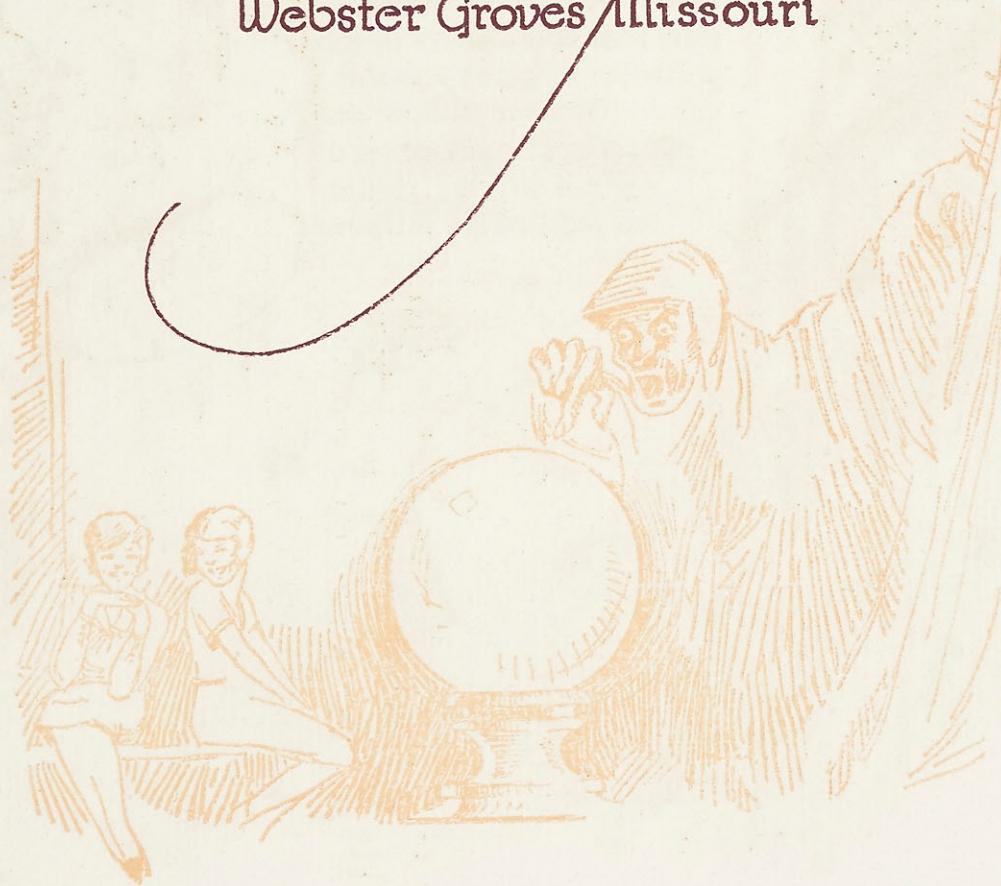


Lauretanum
1929

COPYRIGHT
1929
//
Thelma Gesell
EDITOR
Catherine Rohan
BUSINESS MANAGER

Lauretanum 1929

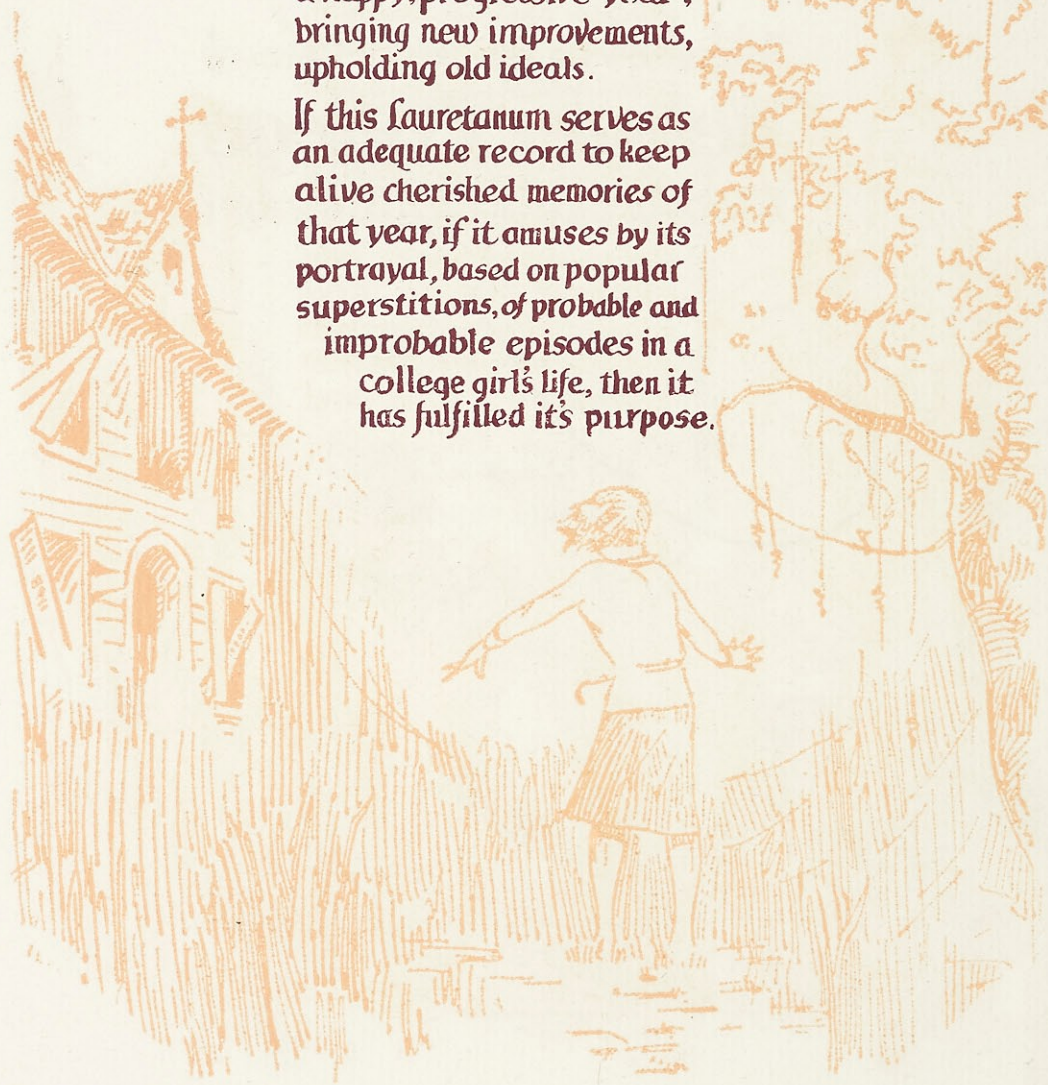
Published by the Senior Class of
Webster College
Webster Groves Missouri



Foreword

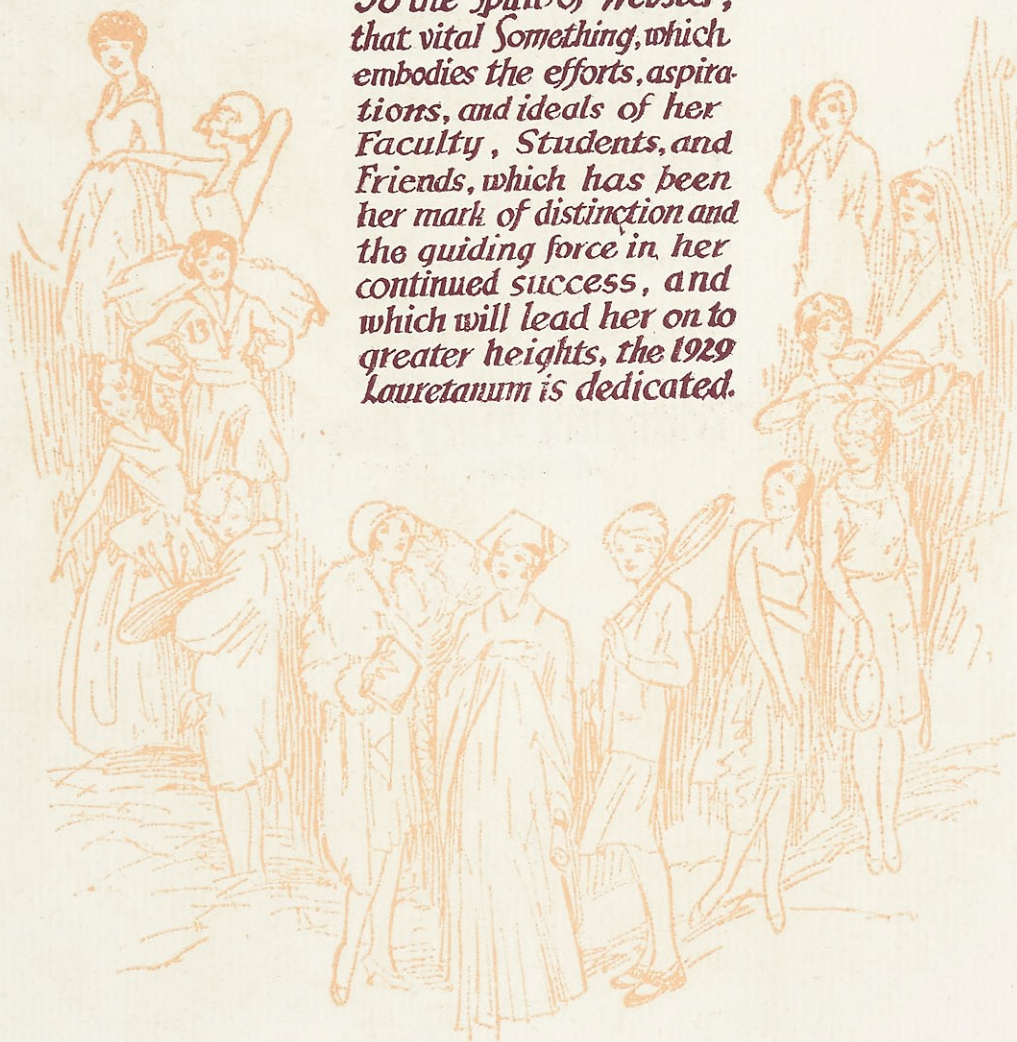
The thirteenth year is now added to Webster's history, a happy, progressive year, bringing new improvements, upholding old ideals.

If this Lauretanium serves as an adequate record to keep alive cherished memories of that year, if it amuses by its portrayal, based on popular superstitions, of probable and improbable episodes in a college girl's life, then it has fulfilled its purpose.



Dedication

To the Spirit of Webster, that vital Something, which embodies the efforts, aspirations, and ideals of her Faculty, Students, and Friends, which has been her mark of distinction and the guiding force in her continued success, and which will lead her on to greater heights, the 1929 Lauretanum is dedicated.



Staff

Thelma Gesell
EDITOR-IN-CHIEF

Marie Cregan
ASSOCIATE EDITOR

Catherine Rohan
BUSINESS MANAGER

Marie Reynolds
ADVERTISING MANAGER

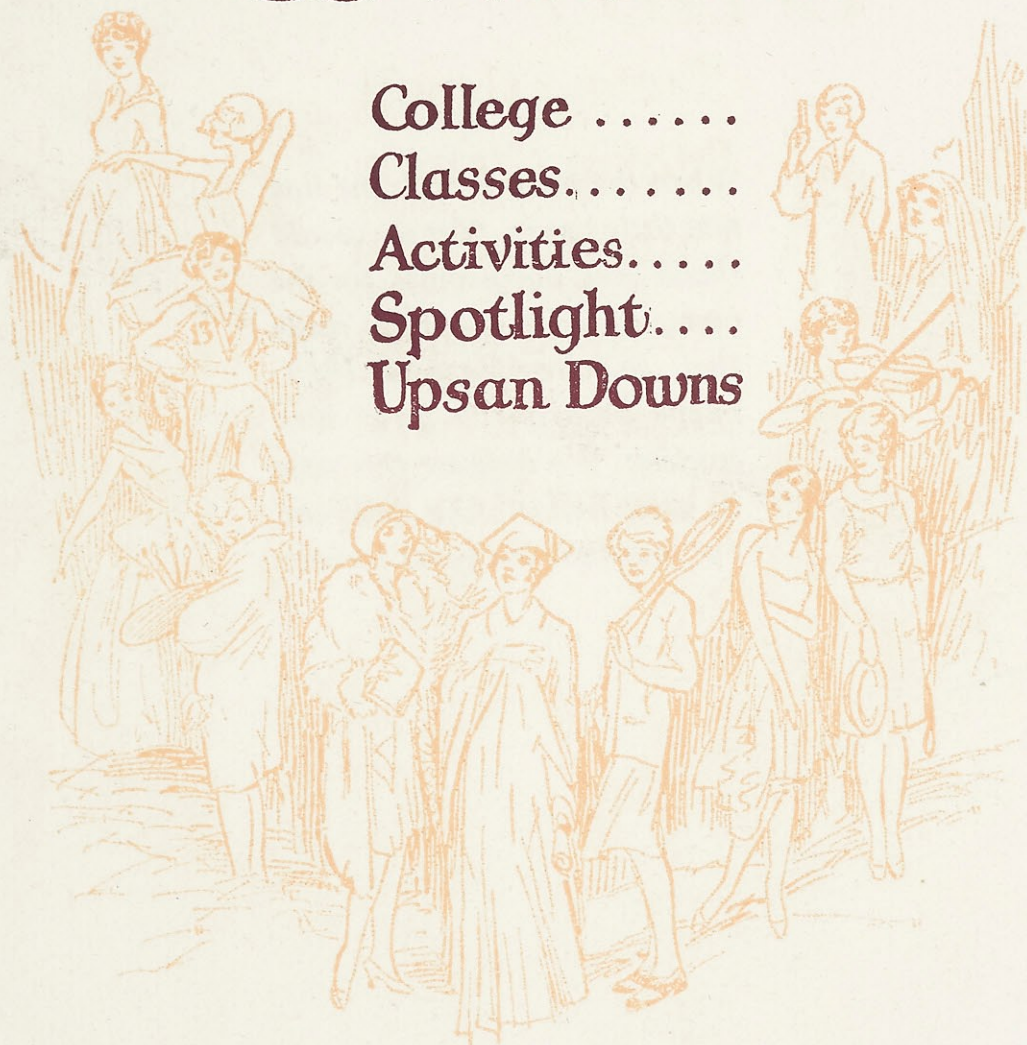
Helen Eaves
CIRCULATION MANAGER

Margaret Mary Brey
ART EDITOR



Contents

College
Classes
Activities
Spotlight
Upsan Downs



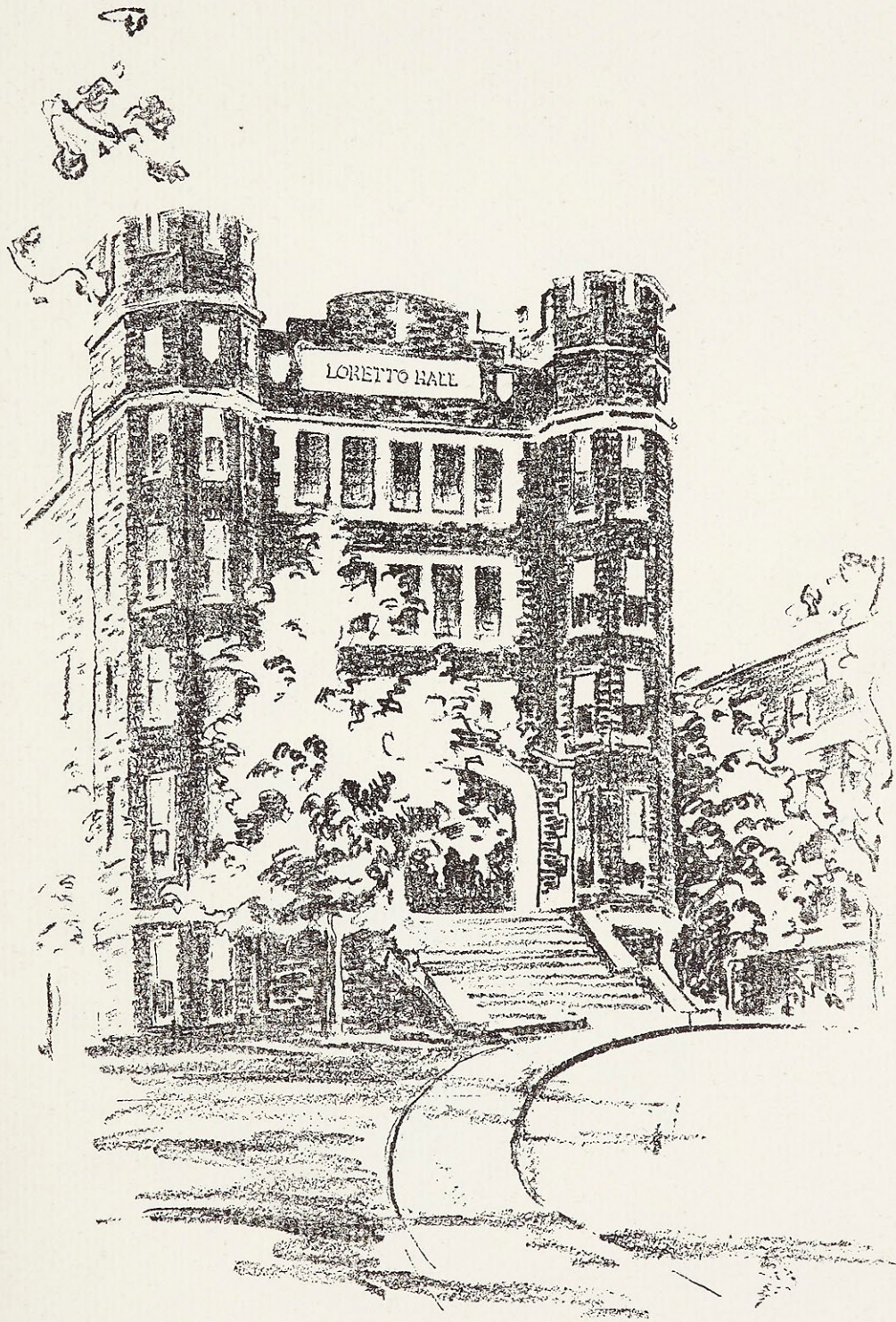
*When the heart is full, the lips
find little to say. Yet we would
thank you, our parents, for the
many sacrifices you have made
that we, the Class of 1929,
might attain the goal now
reached. We dedicate this page
in your honor. Our love and
our gratitude are yours forever.*

The College in Sketch

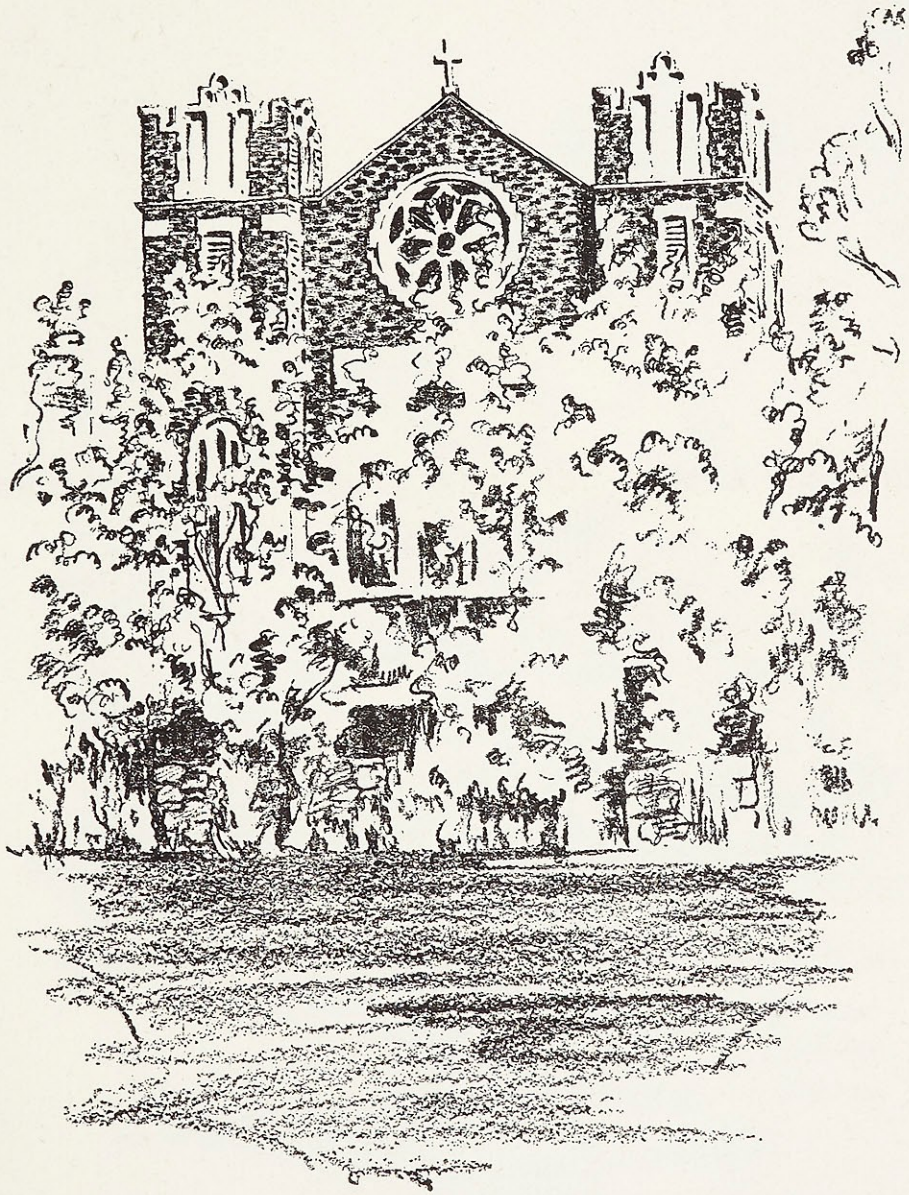
Looking Eastward Along the Main Drive



Entrance to Loretto Hall, the New Residence Building



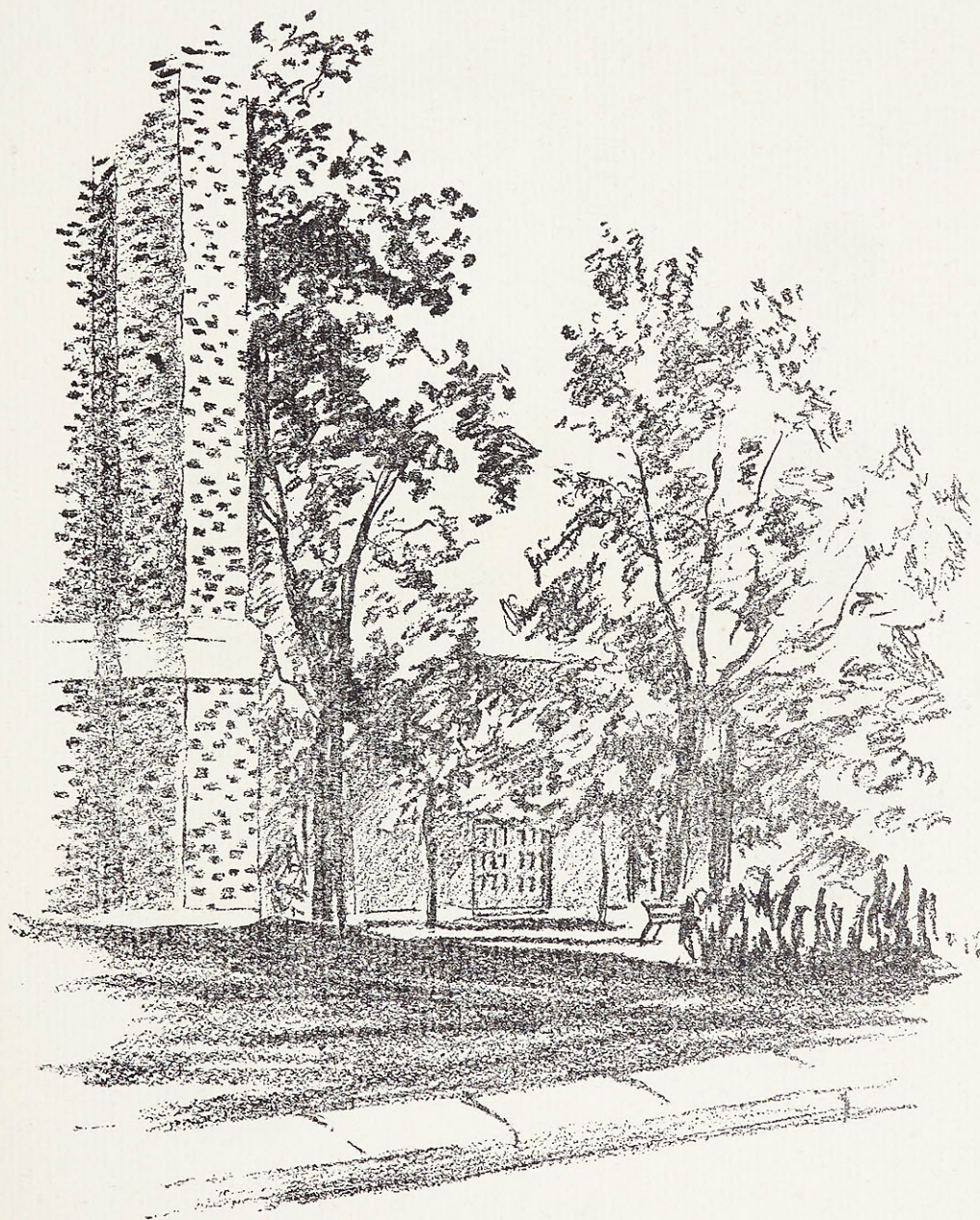
The Chapel of All Saints



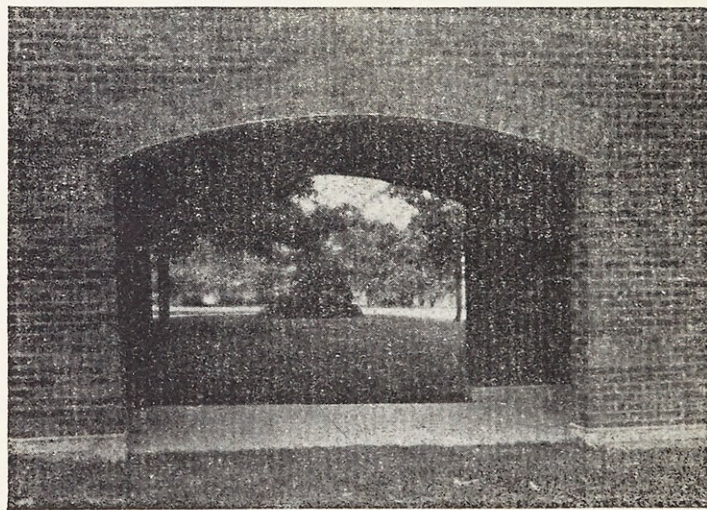
*A Glimpse of Loretto Hall and the Science Wing From the
North Campus*



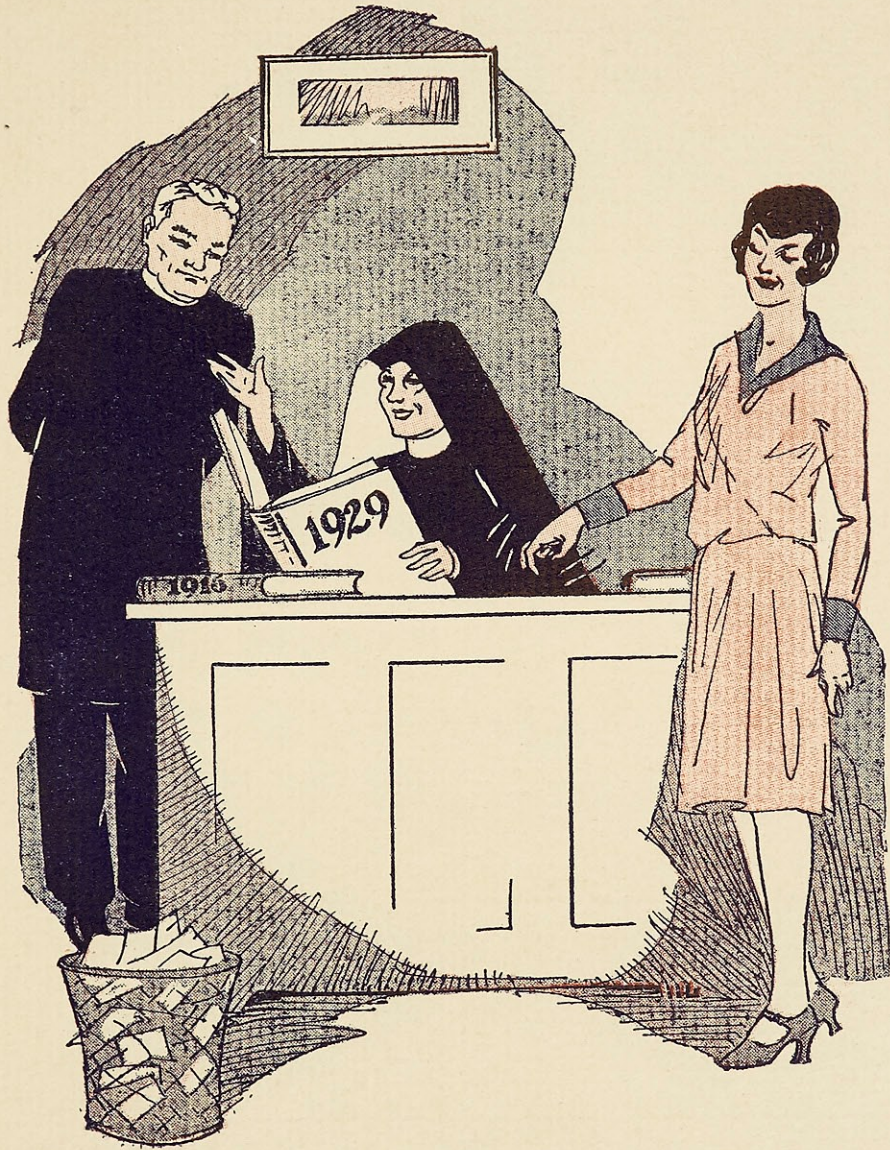
Through the Trees to Idle Hour, Our Gym



Handwritten signature or scribble at the bottom of the page.



Looking Through the Arch



College

Lauretanum

College

OFFICERS OF ADMINISTRATION

MOTHER MARY LINUS, A. M., *President*
SISTER M. BORGIA, A. M., *Dean*
SISTER M. EDWARDA, A. M., *Dean of Women*
SISTER LILLIAN CLARE, *Registrar*
SISTER MARY AMBROSE, *Treasurer*

FACULTY

SISTER MARY BORGIA, A. M.
Professor of Mathematics and Director of the Department (1916)

SISTER MIRIAM, A. M., Ph. D.
Professor of Classical Language and Director of the Department (1916)

SISTER ALOYSIA MARIE, A. M.
Professor of English and Director of the Department (1927)

SISTER MARY EDWARDA, A. M.
Professor of Chemistry and Director of the Department (1925)

SISTER MARY NERINCKX, A. M.
Assistant Professor of English (1924)

SISTER MARY ALOYSE, A. M.
Professor of Biology and Director of the Department (1925)

SISTER FRANCIS MARIE, A. M.
Professor of Education and Director of the Department (1926)

SISTER MARY FELICITAS, A. B.
Instructor in Spanish (1927)

SISTER MARY AMBROSE
Instructor in Secretarial Course (1928)

SISTER MARY PHILIBERT, A. B.
Teaching Fellow in the Classics, St. Louis University (1929)

SISTER MARIE ANTHONY
Instructor in Domestic Science (1920)

SISTER DOROTHY MARIE
Instructor in Domestic Art and Commercial Art (1924)

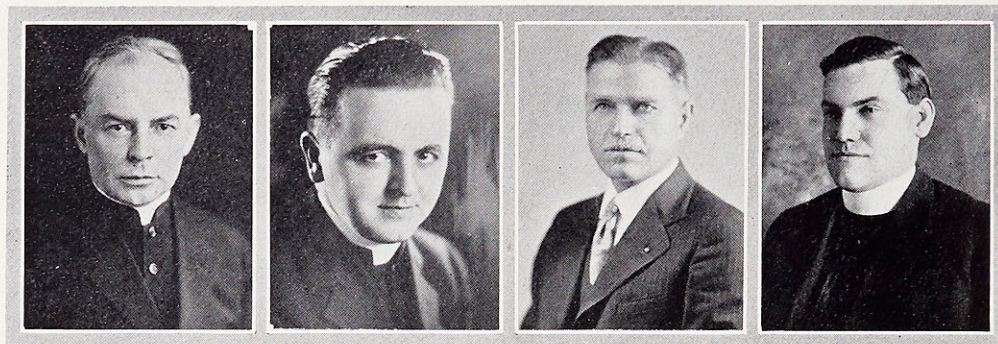
SISTER MARY ADELINE, Mus. B.
Professor of the Theory of Music and Director of the Conservatory (1926)

SISTER MARY ALBERT, Mus. B.
Instructor in Piano (1923)

SISTER MARY PAULA
Instructor in Voice Culture (1928)

SISTER MARY JUSTINE
Instructor in Violin (1928)

Faculty



Rev. F. V. Corcoran, C. M. Rev. M. J. O'Connell, C. M. Hans Elmiger Rev. L. P. Foley, C. M.

REVEREND F. V. CORCORAN, C. M., Ph. D., S. T. D.
Professor of Philosophy and Director of the Department (1917)

REVEREND JOSEPH P. DONOVAN, C. M., J. C. D.
Professor of Sociology (1917)

REVEREND L. P. FOLEY, C. M., S. T. D.
Professor of Philosophy (1927)

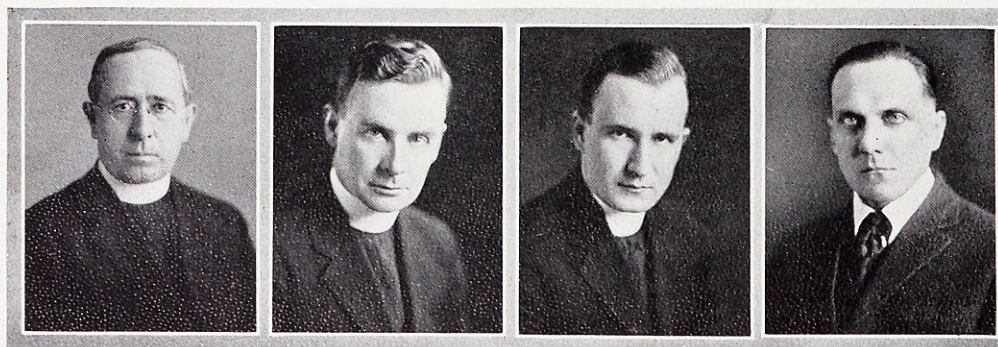
REVEREND JAMES P. O'MALLEY, C. M., A. M.
Professor of Religion and Director of the Department (1924)

REVEREND M. J. O'CONNELL, C. M., S. T. D.
Professor of History and Director of the Department (1928)

REVEREND T. V. CAHILL, C. M., S. T. D.
Professor of Scripture (1926)

MR. R. H. BALDWIN, A. M.
Instructor in History and Political Science (1926)

MR. HANS ELMIGER, P. A.
Instructor in Accounting (1928)



Rev. J. P. Donovan, C. M. Rev. J. P. O'Malley, C. M. Rev. T. V. Cahill, C. M. R. H. Baldwin

Faculty



Louis James

Maximilienne Tetrault

Cathryn Hummert

Anita Mueller

MR. LOUIS E. JAMES, A. M.
Instructor in Physics (1926)

MRS. ANNA McCLAIN SANKEY
Instructor in Expression and Director of the
Department (1916)

Mlle. MARCELLE PREVOST, A. M.
Instructor in French (1924) and Director of
the Department of Modern Languages
(1927)

MISS ANITA R. MUELLER, A. M.
Instructor in Journalism (1927)

MISS MAXIMILIENNE TETRAULT, A. B.
Instructor in French (1928)

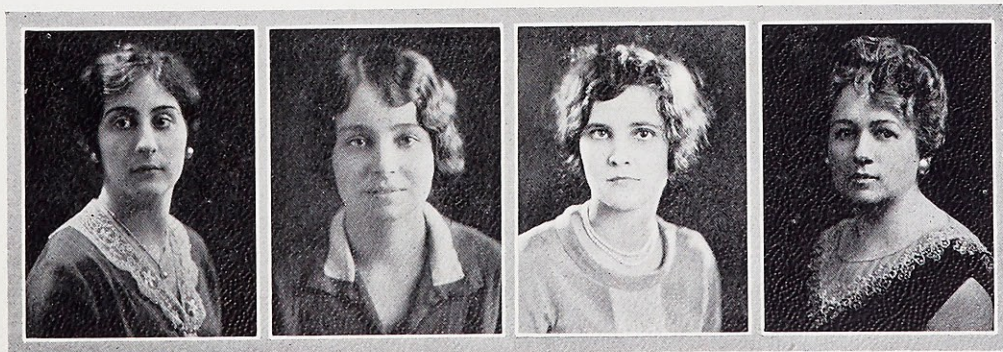
MRS. EMILY BARNICLE TINKER, A. B.
Teaching Fellow in English, St. Louis Uni-
versity (1928)

MISS MARY ELIZABETH NEWELL, A. B.
Teaching Fellow in Mathematics, St. Louis Uni-
versity (1927)

MISS CATHRYN HUMMERT, A. B.
Instructor in Latin (1928)

MISS GENEVIEVE BARTHEL, A. B.
Instructor in Physical Education (1926)

MISS ADA GANNON, A. B.
Instructor in Parliamentary Law (1923)



Mary Elizabeth Newell

Emily Barnicle Tinker

Genevieve Barthel

Anna McClain Sankey



IN THE COURSE OF THIRTEEN YEARS

And with time comes progress! Thirteen years ago Webster College, then known as Loretto College, first opened her doors to admit a few timid freshmen. To be sure, it was a modest College, a small, unassuming College; but it was the first Catholic Women's College to offer a full Bachelor's course in the archdiocese of St. Louis. That is something of which her Alumnae may well be proud.

In the west wing of the Administration Building, then the only building, a few rooms had been surrendered by the Academy for the use of the collegians. There were four classrooms and a study hall; the Dean's office served as an English room during class hours. But even with such a small beginning, the Faculty was content. They could close their eyes and see troops of college students going to, and from, crowded classrooms; and they hoped and planned for those very girls-to-come.

In 1919, Webster bestowed the diploma and hood upon her first Bachelors. And all the while, the registration grew. There came a time when the entire west half of the building was devoted to college work, and the girls in cap and gown almost filled one of the aisles in the Chapel. Then, in September, 1924, Loretto Academy of Loretto College moved to the Lockwood estate and changed its name to Nerinx Hall. The College, it was told in smiling whispers, was to be admitted into the North Central Association and was required to have its own building and one hundred students. The dream had been realized at last, and Webster then took her place as the first fully accredited women's college in St. Louis.

The numbers of students increased. The bedrooms were too limited in number, so were the classrooms. Even some of the music rooms were turned into students' rooms, and music seemed destined to depart or at least to go into a passive existence. Twenty girls were crowded into a tiny room for French classes. The chemistry and physics lectures had to be given in the laboratories; no stock or culture rooms were available for the Biology Department. The Dean's office and the mathematics room were one and the same. The President's and the Secretary's office were together. All in all everything was rather crowded.

On November 1, 1927, the ground was broken on the East Campus for a new residence hall. The following summer, the building was completed and joined to the original one by an enclosed colonnade. Then, indeed, did the College appear as her proper self. Accommodations for one hundred and ninety-six resident students are offered in the new Loretto Hall to girls pursuing college work. On the first floor are to be found the large lounge furnished in taupe velour and lighted by artistic lamps, two small parlors for the students and their guests, the office of the Dean of Women, the Directors' Room in green and lustrous black, the Social Hall where many a musical hour is spent in comfortable rose-wicker chairs, the guest rooms, and a dining-room-kitchen suite, the latter fitted in apple green furnishings and fairly coaxing the girls to come in to use it. The second, third, and fourth floors are devoted to the students' rooms, which can be obtained to accommodate one or two girls in a room or four in a suite. There are adjoining baths with these rooms. A solarium in wicker furniture,



Lauretanum



and a dining-room-kitchen suite are also found on each floor. The cafeteria, locker rooms, and Club Room occupy the ground floor.

In the Administration Building, great changes have taken place. The President, the Secretary, the Dean of Studies, have each her private office on the first floor in the western part of the building. The French and Spanish classes are to be found in the large rooms across from the reception room. The Classics are taught in adjoining rooms at the northeastern corner of the main corridor. For the present, the Physics Department is still on the first floor next to the Mathematics room, but it is hoped that the department will soon be moved to the large space reserved for it on the third floor.

The second floor of the west wing is now used entirely for the Conservatory of Music and includes practice rooms, the Music Library, and the studios. On this floor, the east wing is given over to Biology. This is the only scientific department which as yet has been so greatly improved. The suite is comprised of the lecture room, the professor's private office and her adjoining laboratory, an apparatus room, the general laboratory capable of accommodating sixty students working at one time, an original research laboratory, and a stock room. Besides the increase in space, there have been many new pieces of equipment added, such as microscopes, dissection sets, anatomical charts, delicately-made models of the human heart, brain, and the like.

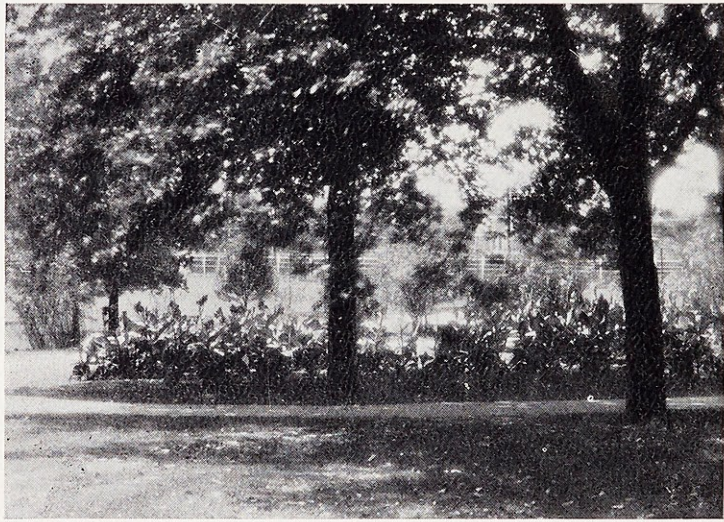
The Commercial Department, the Art Department, and the Education Department are on the third floor. The Student Publication Office is also found there. Within the next year or so, it is expected that besides the Physics Department, that of the Chemistry will also be moved to this floor. The latter is to have a suite corresponding in general to that of the Biology, and is to occupy the east wing.

This year has also found some new members on the College Faculty. Reverend M. J. O'Connor, C. M., formerly of St. Mary's Seminary, Perryville, and of the Collegio Angelico, Rome, is now Professor of History and Director of the Department, while additions have been made to the teaching staff in other departments. Sister Mary Justine and Sister Mary Paula are now instructors in violin and voice respectively. Sister Mary Philibert is assisting in the Greek department, and Mrs. Emily Barnicle Tinker, A. B., has been added to the English staff. Miss Maximilienne Tetrault, who is an A. B. from Boston University, and who has received Le Diplome de Professeur de Francais a l'Etranger from Sorbonne, has come as an instructor in French. The new Latin instructor is Miss Cathryn Hummert, A. B. from Webster College. Accounting and Commercial Law, which are offered for the first time at the College, are under the instructorship of Mr. Hans Elmiger, P. A.

Thus it is that, far from coinciding with the popular belief that the number 13 is unlucky, the present year is the most successful one in the history of the College, for within its limits are found a new Loretto Hall, new courses, new teachers, and above all, more students. The dream of that first Faculty is more than realized! May the growth and success noted ever continue in the years to come!



Lauretanum



A Favorite Place to Stroll



Classes



Seniors



ROSE MALON

St. Louis, Missouri

B. S. in Mathematics and Physics

President Class '28, '29

Student Council '28, '29

Math Club '28, '29

Poetry Club '27, '28, '29

Dramatics '26, '27, '28, '29

Sodality '26, '27, '28, '29

C. S. M. C. '26, '27, '28, '29

W. A. A. '26, '27, '28, '29



BLANCHE MARSHALL
Maplewood, Missouri
B. S. in Chemistry and Biology

Vice-President Class '29
Chemistry Club '28, '29
Biology Club '28, '29
Choral Club '28, '29
Sodality '26, '27, '28, '29
C. S. M. C. '26, '27, '28, '29
W. A. A. '26, '27, '28, '29



CELESTE FEHLIG
St. Louis, Missouri
A. B. in English and Latin

Secretary Class '28, '29
Secretary Sodality '29
Mission Representative '28
Classical Club '29
Sodality '26, '27, '28, '29
C. S. M. C. '26, '27, '28, '29
W. A. A. '26, '27, '28, '29



CATHERINE LOUISE HAYES
Edina, Missouri

Litt. B. in English and Spanish

Treasurer Class '29
Poetry Club '28, '29
Literary Club '28
Sodality '26, '27, '28, '29
C. S. M. C. '26, '27, '28, '29
W. A. A. '26, '27, '28, '29



JULIE BOURKE
Lee Summit, Missouri
A. B. in Latin and English

Student Council '29
Vice-Prefect Sodality '29
Biology Club '28, '29
Sodality '26, '27, '28, '29
C. S. M. C. '26, '27, '28, '29
W. A. A. '26, '27, '28, '29



MARGARET MARY BREY

St. Louis, Missouri

A. B. in English and Greek

Vice-President Classical Club '29
Student Council '29

Act Editor Lorette '28

Act Editor Lauretanum '29

Sodality '26, '27, '28, '29

C. S. M. C. '26, '27, '28, '29

W. A. A. '26, '27, '28, '29



LILLIAN ADELAIDE CASE

St. Louis, Missouri

A. B. in French and Spanish

Social Secretary Spanish Club, St. Louis U. '29

Poetry Club '28, '29

Vice-President Choral Club '29

Dramatics '28

Spiritual Treasurer C. S. M. C. '27

Sodality '26, '27, '28, '29

W. A. A. '26, '27, '28, '29

Choir '28, '29



MARIE CREGAN
St. Louis, Missouri

B. S. in Mathematics and Physics

- Associate Editor Laetanus '29*
- Assistant Advertising Manager Loretine '28*
- Secretary Math Club '28*
- Biologu Club '28, '29*
- Dramatic Art Club '28, '29*
- Sodality '26, '27, '28, '29*
- C. S. M. C. '26, '27, '28, '29*
- W. A. A. '26, '27, '28, '29*



RUTH DOCKERY

St. Louis, Missouri

A. B. in English and Latin

*St. Mary's College, Prairie du Chien,
Wisconsin '25*

Harris Teachers' College '26, '27

Classical Club '28, '29

Volley Ball '27

Sodality '27, '28, '29

C. S. M. C. '27, '28, '29

W. A. A. '27, '28, '29



HELEN EAVES

St. Louis, Missouri

B. S. in Chemistry and Mathematics

President Chemistry Club '29

Student Council '28

Business Manager Loretine '29

Circulation Manager Laetanus '29

Business Manager Vaudeville '29

Sodality '26, '27, '28, '29

C. S. M. C. '26, '27, '28, '29

W. A. A. '26, '27, '28, '29



THELMA GESELL
St. Louis, Missouri
A. B. in Greek and French

Editor-in-Chief Lauretanum, '29
Associate Editor Web '29
President Classical Club '29
Secretary-Treasurer Choral Club '29
Biology Club '29
C. S. M. C. '25, '26, '28, '29
Sodality '25, '26, '28, '29
W. A. A. '25, '26, '28, '29



CATHERINE STANTON HAZEL

Owensboro, Kentucky

A. B. in Chemistry and Philosophy

Maid to St. Louis U. Prom '29

Vice-President Chemistry Club '28, '29

Vice-President Class '26

Secretary Class '27

Student Council '29

Sodality '26, '27, '28, '29

C. S. M. C. '26, '27, '28, '29

W. A. A. '26, '27, '28, '29



GERTRUDE JOLLEY
St. Louis, Missouri
A. B. in Latin and Spanish

President Student Association '29
Treasurer Student Association '28
May Queen '28
Vice-President Class '28
President W. A. A. '28
Treasurer Class '27
Sodality '26, '27, '28, '29
C. S. M. C. '26, '27, '28, '29



MARION MCGINNIS LANE

Burlington, Kansas

A. B. in Biology and Philosophy

President C. S. M. C. '29

Treasurer C. S. M. C. '28

President Biology Club '29

Secretary Biology Club '28

Vice-President Poetry Club '28

Secretary Poetry Club '29

Sodality '26, '27, '28, '29

W. A. A. '26, '27, '28, '29



AGNES O'CONNOR
Dallas, Texas
Litt. B. in English and French

Southern Methodist University '28
Holy Eucharist Committee '27
Web Staff '26
Dramatics '26, '27
Sodality '26, '27, '29
C. S. M. C. '26, '27, '29
W. A. A. '26, '27



ROSEMARY O'REILLY
St. Louis, Missouri
A. B. in Latin and English

- Chairman Vaudeville '29
- Associate Editor Loretine '29
- Classical Club '28, '29
- Basket Ball '26, '27, '28
- Volley Ball '28
- Sodality '26, '27, '28, '29
- C. S. M. C. '26, '27, '28, '29
- W. A. A. '26, '27, '28, '29



MARIE REYNOLDS
Webster Groves, Missouri
A. B. in Chemistry and Philosophy

President Class '27
Prefect Sodality '29
Vice-President C. S. M. C. '28
Secretary Student Council '29
Advertising Manager Laetianum '29
Associate Editor Loretine '28
Volley Ball '27, '28
Basket Ball '27, '28



MARIE RUTH RICE
St. Louis, Missouri
A. B. in English and Greek

Web Staff '27, '28
Art Editor Loretine '29
Secretary Classical Club '29
Classical Club '28, '29
Sodality '26, '27, '28, '29
C. S. M. C. '26, '27, '28, '29
W. A. A. '26, '27, '28, '29



MARGARET ROESCH
Webster Groves, Missouri
A. B. in French and Latin

President Choral Club '29
Classical Club '28, '29
Literary Club '28
Sodality '26, '27, '28, '29
C. S. M. C. '26, '27, '28, '29
W. A. A. '26, '27, '28, '29



CATHERINE ROHAN
Webster Groves, Missouri
A. B. in Chemistry and Biology

Editor-in-Chief Web '29
Business Manager Lauretanum '29
Vice-President C. S. M. C. '29
Advertising Manager Loretine '28
Treasurer Class '28
Choral Club '28, '29
Sodality '26, '27, '28, '29
W. A. A. '26, '27, '28, '29



MARIE SCHEER

St. Louis, Missouri

B. S. in Mathematics and Education

St. Mary's College, Prairie du Chien, Wisconsin, '25

President Math. Club '29

Maid to May Queen '28

Captain Volley Ball '27

Math Club '28, '29

Sodality '27, '28, '29

C. S. M. C. '27, '28, '29

W. A. A. '28, '29



JOSEPHINE THOMPSON

St. Louis, Missouri

B. S. in Music, Piano and Violin

Captain Volley Ball '28

Basket Ball '26, '27

Orchestra '28, '29

Sodality '26, '27, '28, '29

C. S. M. C. '26, '27, '28, '29

W. A. A. '26, '27, '28, '29



FRANK RAYMOND WARD
Birmingham, Alabama
B. S. in Music, Piano and Violin

Washington University '25, '26
President Poetry Club '29
Associate Editor Lorette '29
Spiritual Treasurer C. S. M. C. '29
Secretary Choral Club '28
Orchestra '28, '29
Literary Club '28, '29
Sodality '28, '29

With sincere affection we dedicate this page to those Sisters of Loretto, our classmates, who have worked with us toward a common goal.

Laurelanum

*Two little Seniors, so blithe and so gay,
Went out on a serious adventure one day.
Soon they must face the struggle and strife
For their final degree in the School of Life.
"I know," said the one, "it takes hard work and pluck,
But let's go and try to find a rabbit's foot for luck!"*

—T. G.



Juniors

Junior Class



E. Kohl
L. Rapillard

- EMMA KOHL
Belleville, Illinois
- LUCILLE RAPILLARD
Little Rock, Arkansas
- JOSEPHINE RABBITT
St. Louis, Missouri
- DORRIT BARNICLE
St. Louis, Missouri
- ELIZABETH COAKLEY
St. Louis, Missouri
- MARGARET VOLLET
St. Louis, Missouri
- EARLINE STROTHKAMP
St. Louis, Missouri
- EUGENIA BOCK
Pierron, Illinois
- WINIFRED KANE
St. Louis, Missouri



J. Rabbitt D. Barnicle E. Coakley
M. Vollet E. Strothkamp E. Bock W. Kane

Junior Class

HELEN WISE
St. Louis, Missouri

ORIENT WEIS
St. Louis, Missouri

MARGARET REARDON
Sterling, Illinois

ELLEN QUIRK
St. Louis, Missouri

ESTELLA CAVANAUGH
Clare, Iowa

MARY FRANCES BROEKER
St. Lou's, Missouri

NEVA DAILEY
Kankakee, Illinois

FRANCES ERNST
St. Louis, Missouri

CATHERINE CODY
St. Lou's, Missouri



H. Wise
O. Weis



M. Reardon E. Quirk E. Cavanaugh

M. F. Broecker N. Dailey F. Ernst C. Cody

Lauretanum

*"O dear, O dear," said a worried miss,
What can the answer be?
I've pulled the petals from sunflow'rs
Until they number three.
'He loves me; he loves me not,'
I hope THIS comes out right."
But wouldn't she blush and fuss a lot,
If she knew HE watched the sight?
—T. G.*



Sophomores

Sophomore Class



B. Wolff
C. Geary

- BERNICE WOLFF
St. Louis, Missouri
- CATHERINE GEARY
Highland Park, Illinois
- MARY FRANCES PERRY
St. Louis, Missouri
- DOROTHY O'KEEFFE
Montgomery, Alabama
- VALERIE GARTHOFFNER
St. Louis, Missouri
- SUZANNA CORRIGAN
Poplar Bluff, Missouri
- KATHRYN HASKIN
Parsons, Kansas
- KATHLEEN HAMEL
Yazoo City, Mississippi
- HELEN NESBIT
Belleville, Illinois
- MARGARET LUDDEN
St. Louis, Missouri



M. F. Perry
K. Haskin

D. O'Keeffe
K. Hamel

V. Garthoffner
H. Nesbit

S. Corrigan
M. Ludden

Sophomore Class

ALICE WIDMER
Webster Groves, Missouri
HELEN MARIE O'BRIEN
St. Louis, Missouri
ANN RYAN
St. Louis, Missouri
ROSE PHELAN
St. Louis, Missouri
LUCILLE SIEFERT
Webster Groves, Missouri
MARIE REIS
Belleville, Illinois
THELMA PAPE
St. Louis, Missouri
MARGARET SCHAEFER
St. Louis, Missouri
VERONICA RYAN
Mount Horeb, Wisconsin
BETTY SHARP
Kansas City, Mo.



A. Widmer
H. O'Brien



A. Ryan
T. Pape

R. Phelan
M. Schaefer

L. Siefert
V. Ryan

M. Reis
B. Sharp



Sophomore Class



D. Condren
B. Daily

- DORIS CONDREN
St. Louis, Missouri
BERNIECE DAILY
Shawneetown, Illinois
ANNE BOONE
Louisville, Kentucky
ANITA BAREIS
East St. Louis, Illinois
HELEN DENKER
Webster Groves, Missouri
RUTH BERGFELD
St. Louis, Missouri
ELIZABETH DUNNE
Webster Groves, Missouri
MARGARET DELISLE
St. Louis, Missouri
VIRGINIA COONEY
St. Louis, Missouri
MARY ROSE BURKE
Webster Groves, Missouri



A. Boone
E. Dunne

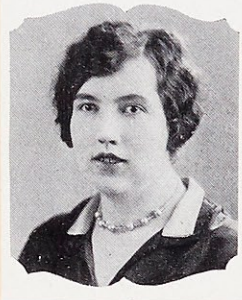
A. Bareis
M. DeLisle

H. Denker
V. Cooney

R. Bergfeld
M. R. Burke

Sophomore Class

- DOROTHY CORLEY
Kirkwood, Missouri
- ALICE CLARKE
St. Louis, Missouri
- ROSEMARY HYNES
St. Louis, Missouri
- DOROTHY WALSH
Chicago, Illinois
- BERNADETTE STURGESS
Vandalia, Illinois
- HELEN CATHERINE SHERMAN
Louisville, Kentucky
- HELEN MARGARET O'BRIEN
Little Rock, Arkansas
- CATHERINE SULLIVAN
Birmingham, Alabama
- MARIE WITTRICK
Webster Groves, Missouri
- ADELAIDE MURPHY
St. Louis, Missouri



D. Corley
A. Clarke



R. Hynes
H. O'Brien

D. Walsh
C. Sullivan

B. Sturgess
M. Wittrock

H. C. Sherman
A. Murphy

Lauretanum

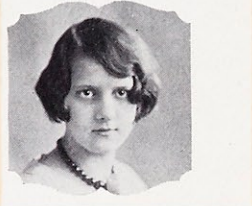
*Look over your left shoulder,
Glance at the new moon—
This is the quickest way, folks say,
To have some bad luck soon.
But a Sophomore is gay and free—
"Bad luck? How silly! Can't scare me."
—T. G.*





Freshmen

Freshman Class



P. McMullen
M. M. Everroad
E. O'Malley

- PATRICIA McMULLEN, Kansas City, Mo.
 MARY MARGARET EVERROAD, St. Louis, Mo.
 ELIZABETH O'MALLEY, Denver, Colo.
 AGNES LOUISE RUPP, St. Louis, Mo.
 JOSEPHINE REDDIN, Denver, Colo.
 MARY VIRGINIA CUMMINS, Webster Groves, Mo.
 ELLEN PRENDERGAST, St. Louis, Mo.
 DOROTHY FAIRALL, Denver, Colo.
 DOROTHEA SHUFORD, East St. Louis, Ill.
 JANE POOLE, Milan, Mo.
 CLARA BELLE MUELLER, St. Louis, Mo.
 LORNA REHAGEN, Kansas City, Mo.
 CAROL EMGE, Salt Lake City, Utah
 DOROTHY PLUMMER, St. Louis, Mo.
 MARGARET WILDE, Kansas City, Mo.
 CATHERINE O'FLAHERTY, Kansas City, Mo.
 JEAN EVANS, Hugo, Okla.
 FLORENCE O'BRIEN, St. Louis, Mo.



A. L. Rupp
D. Shuford
D. Plummer

J. Reddin
J. Poole
M. Wilde

M. V. Cummins
C. Mueller
C. O'Flaherty

E. Prendergast
L. Rehagen
J. Evans

D. Fairall
C. Emge
F. O'Brien

Freshman Class

MARION GARTHOFFNER, St. Louis, Mo.
 DOROTHY MEYER, St. Louis, Mo.
 ANN RYAN, St. Louis, Mo.
 ELLEN ORA HASKIN, Parsons, Kans.
 MARIE WIBRACHT, St. Louis, Mo.
 ELLEN NIEMANN, St. Louis, Mo.
 MAY HILLEMAYER, Webster Groves, Mo.
 MARY LOUISE HOGAN, Monett, Mo.
 ROSEMARY GOTTLOB, Flat River, Mo.
 FRANCES SLOAN, Milan, Mo.
 MARGARET GUNTHER, St. Louis, Mo.
 MARIE GROSS, St. Louis, Mo.
 MARIE WALSH, East St. Louis, Ill.
 LETITIA HYSLOP, Chihuahua, Mexico
 REBECCA DULEY, Rockville, Mo.
 FRANCES CASEY, St. Louis, Mo.
 HELEN GRAVES, Clayton, Mo.
 MARY HICKMAN, Vicksburg, Miss.



M. Garthoffner
 D. Meyer
 A. Ryan



E. Haskin
 R. Gottlob
 L. Hyslop

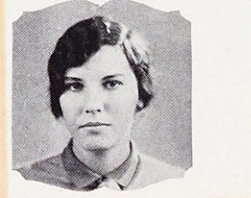
M. Wibracht
 F. Sloan
 R. Duley

E. Niemann
 M. Gunther
 F. Casey

M. Hillemeier
 M. Gross
 H. Graves

M. L. Hogan
 M. Walsh
 M. Hickman

Freshman Class



M. E. McGinty
V. Drummond
A. Cowley

MARY ELEANORA MCGINTY, St. Louis, Mo.
 VIRGINIA DRUMMOND, East St. Louis, Ill.
 AGATHA COWLEY, Toulminville, Mobile, Ala.
 GENEVIEVE MCBRIDE, Las Cruces, New Mexico
 ESTHER KRAFT, New Albany, Ind.
 ESSEMENA WEINACKER, Mobile, Ala.
 JANE BURLEIGH, Webster Groves, Mo.
 MARY BROWN, St. Louis, Mo.
 ROSEMARY BARRY, St. Louis, Mo.
 FLORINE BLEVINS, Paris, Ark.
 DORIS BENDER, Mobile, Ala.
 THELMA KINSELLA, St. Louis, Mo.
 HELEN MCEVOY, St. Louis, Mo.
 MARY HYSLOP, Chihuahua, Mexico.
 INGA BLOCK, Maplewood, Mo.
 MILDRED KENNEDY, Lawton, Okla.
 HELEN KNOTTS, Neosho, Mo.



G. McBride	E. Kraft	E. Weinacker	J. Burleigh	M. Brown
H. McEvoy	R. Barry	F. Blevins	D. Bender	T. Kinsella
	M. Hyslop	I. Block	M. Kennedy	H. Knotts

Freshman Class

MARY CAROLYN FIELDS, Portageville, Mo.
 RUTH GOODBODY, San Diego, Calif.
 RUTH MCKENNA, St. Louis, Mo.
 ELLISE LEE, St. Louis, Mo.
 MARY ANGELA RODUIT, Webster Groves, Mo.
 EMMA SIMON, Houston, Texas
 NORMA SCHICK, St. Louis, Mo.
 CATHERINE SCHMUKE, Jackson, Mo.
 FRANCES WEBER, Webster Groves, Mo.
 MARY ZILLIKEN, Chester, Ill.
 ROSE MARY FELLEENZ, St. Louis, Mo.
 ANN WARD, Arkansas City, Kans.
 CATHERINE STEINLAGE, St. Louis, Mo.
 BILLIE SURPRISE, Wichita, Kans.
 AGNES TANCREED, Fort Smith, Ark.
 GRACE STRECKER, St. Louis, Mo.
 JANET WIMER, University City, Mo.

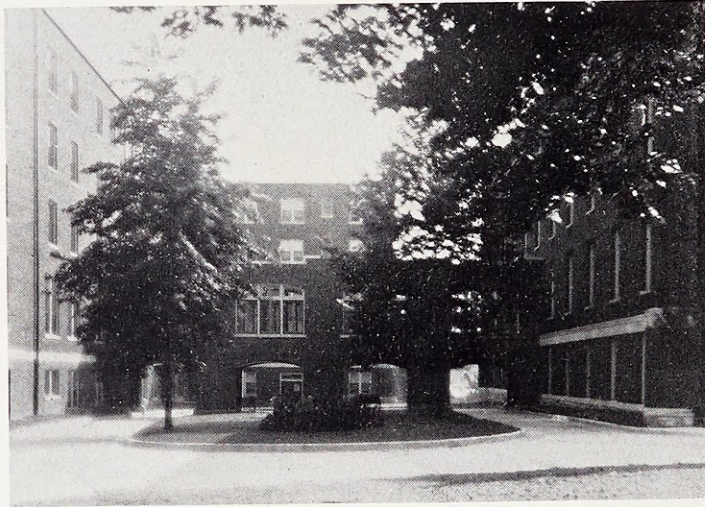


M. C. Fields
 R. Goodbody
 R. McKenna



E. Lee M. A. Roduit E. Simon N. Schick C. Schmuke
 F. Weber M. Zilliken R. Fellenz A. Ward
 C. Steinlage B. Surprise A. Tancred G. Strecker J. Wimer

Lauretanum



The Ambulatory



Activities



Clubs

Sigma Sigma Sigma



Josephine Rabbitt
Treasurer

Marion Lane
President

Helen Sherman
Secretary

Sigma Sigma Sigma, the Biology Club of Webster College, made its formal debut January 12, 1928. The first meeting was a forerunner of the splendid progress that has been made under the guidance of its capable directors. The high ideals of the young but sturdy club are best exemplified in the aim that motivated its foundation, namely, the purpose of popularizing knowledge of biology and fostering interest in its many lines of activity. With this end in view, the charter members of Sigma Sigma Sigma duly incorporated into its constitution the requirement that for admission to the organization one must have successfully completed one year of general biology.

Monthly meetings are held in the Biology Section, at which papers are presented on carefully selected topics of scientific interest. The topics are chosen with a view to stimulate interest and to add to the scientific knowledge of the scope and applications of biology; discussions are directed along the same line. In one word, the Club stands for "progress."



V. Garthoffner, E. Strothkamp, M. Reynolds, K. Hamel, C. Hazel, M. Lane, A. Ryan
D. O'Keeffe, H. O'Brien, B. Daily, C. Rohan, M. Cregan, B. Marshall, T. Gesell, B. Sturgess
D. Walsh, M. Wittrock, S. Corrigan, J. Rabbitt, O. Weis, V. Ryan, M. DeLisle, N. Dailey, H. Sherman

Sigma Epsilon Rho



Margaret Brey Thelma Gesell Marie Rice
Vice-President President Secretary-Treasurer

Among her various activities, Webster is particularly proud of her clubs, gatherings for feminine intellectuals to discuss and exchange their views on matters of mathematics, sciences and languages.

Sigma Epsilon Rho, the Classical Club of Webster College, gives ample opportunity to students of Latin and Greek to discuss and to inform the "hoi polloi" about the value of the classics, the study of which they hope to further.

The Club was first instituted and guided by a small group under the leadership of Ann Carr of '28 for the purpose of stimulating interest in the Classics. This year has seen a vast improvement, and the Club now boasts a constitution and a greater enrollment. The officers of this year have planned many interesting meetings for their term of office, and it is hoped that those succeeding them will help to make Sigma Epsilon Rho an important part of the activities of the College.



R. Bergfeld, G. Jolley, M. Brey, M. Vollet, C. Fehlig, R. O'Reilly, D. Corley, M. Ludden, M. Murphy
 B. Wolff, A. Clark, J. Rabbitt, M. Wittrock, D. O'Keeffe, K. Hamel, R. Hynes, T. Gesell, A. Ryan
 N. Dailey, M. DeLisle, R. Dockery, M. Perry, L. Rapillard, M. Roesch, D. Barnicle

Chemistry Club



Catherine Hazel
Vice-President

Helen Eaves
President

Orient Weis
Secretary-Treasurer

The Chemistry Club of Webster College was organized in October, 1928. Its purpose is to foster an interest in chemistry among the students. Any student or alumna of Webster College who is interested in this science is eligible for membership. The officers consist of a President, Vice-President, and Secretary-Treasurer. Sister Mary Edwarda, Director of the Department of Chemistry, is the Honorary President.

At the first monthly meeting in 1929, a constitution was drawn up and adopted, and the club is now functioning smoothly under its new regulations. During the course of the meetings, papers on matters pertaining to chemistry are read, or articles of current interest are reviewed by the students. Trips to industrial concerns in the city have also been planned.

The members take a vital interest in the club, each vying with the other in an effort to bring to the meeting some of the new and astounding facts that chemistry is continually contributing to the world's knowledge.



F. Casey, B. Wolff, M. Reynolds, C. Hazel, D. Fairall
J. Rabbitt, C. Rohan, B. Marshall, H. Nesbit, W. Kane
E. O'Malley, O. Weis, H. Eaves, J. Reddin

Choral Club



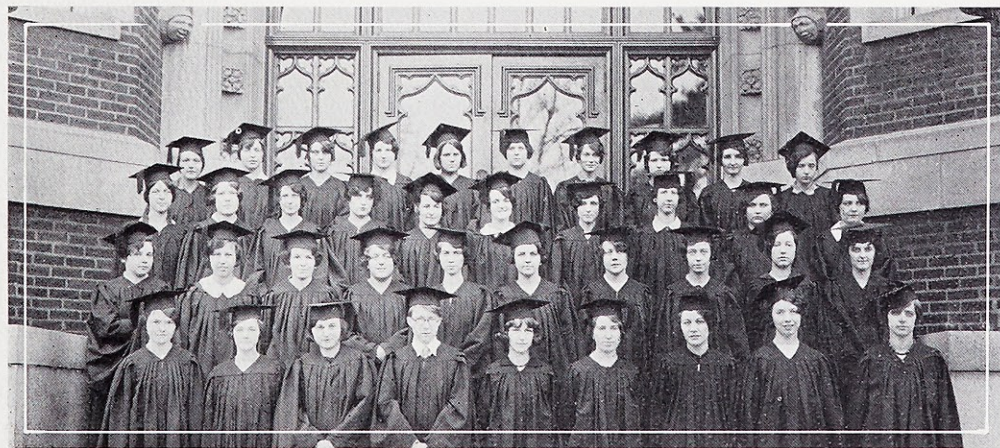
Thelma Gesell
Secretary-Treasurer

Margaret Roesch
President

Lillian Case
Vice-President

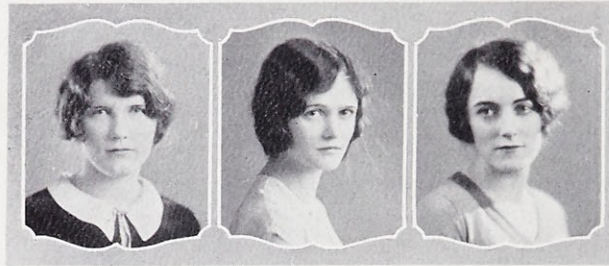
This has indeed been a year of progress for the Choral Club, which was organized in 1925. Under the directorship of Sister Mary Paula, Instructor in Voice Culture, the Club has proven itself to be so interesting that it was necessary to close its membership after forty-two girls had been admitted. This advancement is considered to be a result of the growing desire for better musical groups in the College. However, the Club can maintain its present high standards and achieve greater success only by a continuance of the spirit of co-operation which now exists among the students.

The Club holds its practice twice a week and during the year has made two very successful public appearances. A deep appreciation of good music has been fostered in every member, and it is hoped that, with this rich possession, the Choral Club may attain the goal set by its director, that of spreading the name and glory of Webster. Such a goal is a high and worthy one, indeed, and the Club is striving earnestly for its fulfillment. One stride forward will be the presentation of a representative group, early in May, over radio station KMOX.



Simon, Kennedy, Sloan, McEvoy, McBride, Hogan, Schmuke, Shuford, Tancred, O'Flaherty
Gottlob, O'Keeffe, Sturgess, Case, Kraft, Poole, Corley, Strothkamp, Coakley, Fairall
Ward, Drummond, Condren, Pape, Rohan, Cregan, Marshall, Gesell, Graves, Emge
Burke, Weber, Bock, Sullivan, DeLisle, Roesch, Malon, Perry, Schaefer

Poetry Club



Adele Daniel
Vice-President

Frank Ward
President

Marion Lane
Secretary

"An angel's feather fell to earth,
When yet the world was new to man,
'Twas made into a pen, and that
Was how all poetry began."

The Poetry Club was formed in the spring of 1927, and already it has become an important factor in life at Webster College. The society has for its object to promote and create interest in poetry and poetical composition among the students; and the highest honor which this club confers is that of Ivy Poet, bestowed only upon a member of the graduating class, whose poem is read at the Planting of the Ivy in Commencement Week. The organization has already reached its quota of twenty active members, and the work which these poets are doing will soon be published in Webster's first book of poems.



C. Cody, B. Wolff, N. Dailey, L. Case, J. Rabbitt, H. Sherman, T. Pape
A. Daniel, R. Malon, M. Lane, F. Ward, S. Corrigan, L. Hayes

Mathematical Club



Margaret Vollet
Vice-President

Marie Scheer
President

Elizabeth Coakley
Secretary-Treasurer

Among the earliest clubs to be organized at Webster was the Mathematical Club, which held its first meeting in October of 1927. Shortly after this a constitution was adopted and the Club has been functioning actively since that time, under the direction of Sister Mary Borgia, Dean of Studies and Head of the Department of Mathematics. Only those students or alumnae who have mathematics as a major or minor subject may be admitted to membership, but, since its primary purpose is to foster an interest in mathematics, guests are welcome at the monthly meetings.

There have been a number of worth-while papers read and discussed this year, and on January 8, 1929, Reverend J. E. Case, S. J., addressed the Club on "Graphs and Their Equations," a talk which was both interesting and practical. Other interesting programs are being planned and the girls are looking forward to their fulfillment. The excellent discussion on "Infinity" given by Reverend Francis J. Gerst, S. J., a year ago, still lingers in the minds of all.



M. Cregan, B. Wolff, K. Hamel, M. Vollet, E. Coakley, R. Bergfeld
R. Malon, N. Dailey, M. Newell, T. Pape, M. Scheer

Dramatic Club



Alice Widmer Catherine Cody Josephine Rabbitt Mary Frances Broeker
Treasurer *President* *Vice-President* *Secretary*

When a group of people are interested in the same thing they are usually interested in one another. This statement, somewhat platitudinous to be sure, explains nevertheless why the Loretto Players formed their own club this year. The Dramatic Club is an organization with two distinct aims, one educational and one purely social.

Because these young women do not wish to become narrow in their viewpoint or self-centered in their activity, they go to see the best plays that come to St. Louis, and in this way study the newest stage technique. Then, because the people who play together work better together, the Club plans social affairs from time to time. Several of these social gatherings have been held this year and real, whole-hearted good times have been had at every Dramatic Club dance or tea. There is a spirit of understanding, of comradeship, of intimacy engendered by this double contact in work and play, which, put into force, should make the Club one of the most interesting and vital at Webster.



O'Keefe, O'Brien, Weinacker, Hickman, Niemann, Dunne, McEvoy, Fairall, Reddin, Corrigan, Ward, Widmer, Pape, Denker, Cregan, Shuford, Zilliken, Malon, Sturgess, Walsh, Sloan, Kraft, Poole, Simon, Hyslop, Wittrock, Barnicle, Rabbitt, Cody, Ryan, Drummond, Burke, Surprise, Ernst, Fields, O'Malley, Gross, Sullivan, Burleigh, Walsh

Honor Society



Rev. F. V. Corcoran Cathryn Hummert Edith Glosemeyer Marta Brown
Director and Honor Students from Class of '28

The organization of a National Honor Society for graduates of Catholic Women's Colleges was proposed, June, 1926, by Reverend Doctor F. V. Corcoran, C. M., Chairman, to the consideration of the Conference of Women's Colleges of the National Catholic Alumnae. The Conference decided to sponsor the organization, and that the charter members should be selected from the Class of '27. Candidates must be honor students and distinguished for loyalty and service to the school.

It is planned next Fall to have the first National Meeting for the adoption of a constitution, and of a more definite name. Ways and means by which the Society can best further its purpose of aiding the cause of educated Catholic womanhood will also be discussed. The purpose of this organization is to provide an agency for the encouragement of our more gifted and zealous college graduates to exert their proper influence on American society. Webster College has belonged to the Society from the beginning, and now has a membership of six to which may be added candidates from the Class of '29.



Margaret Peters

Theresa Shea
Charter Members

Dorothy Monarch Gary

Sodality



M. Vollet
Asst.-Treasurer

B. Wolff
Treasurer

M. Reynolds
Prefect

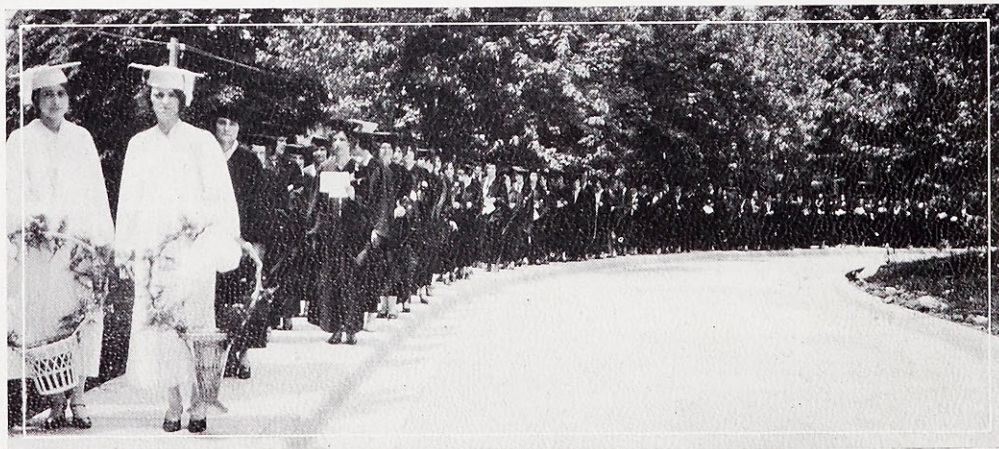
J. Bourke
Vice-Prefect

C. Fehlig
Secretary

Today the critical eyes of the world are fixed upon Catholic youth, and especially, it would seem, upon Catholic young women. Because we are a College, we seek to educate the young woman thoroughly and adequately so that, refined and cultured, she may take her place among the cultured people outside her College walls. Because we are a Catholic College, we strive to make the Catholic young woman refined and cultured morally, to have high ideals and principles and to carry these out into the world.

The means directed to this end is the Sodality of the Blessed Virgin Mary, which has as its object the promotion of personal holiness and active Catholicity. The Blessed Mother is our ideal; to her we have dedicated our work, that she may guide us on to success.

The various Sodality committees are active in fostering devotion to Christ and His Mother, in instructing Catholic children who attend public schools, in putting before the student body the best Catholic literature, and in other similar activities.



Sodality May Day Procession

Lauretanum

C. S. M. C.



E. Bock
Treasurer

C. Rohan
Vice-President

M. Lane
President

E. Cavanaugh
Secretary

F. Ward
Spiritual-Treasurer

The pitiless sun of a burning desert beats down upon a moving army. It mirrors itself in a thousand knightly shields, it flashes brilliantly and gleams dully, even from the bridles of the horses. It is an army of crusaders, the visible support of a glorious cause.

The vision fades and it is 1929. But the spirit of the Crusades lives on. It is the same today as it was in those other Crusades, and the youth of America are doing their share in the great work of saving souls for Christ.

The C. S. M. C. at Webster College is striving to do its part in this organization by not only sending help to Foreign Missions but taking an active interest in our Home Missionary Work. During the course of the school year 1928-1929, several noted missionaries have talked to the student body, among whom may be mentioned, Father Strobe, Monsignor Schurman, and Father Lynch. May the Spirit of the Crusaders ever stalk the halls of Webster.



Scene at Mission Mass, Kenrick Seminary, May, 1928



Laurelannum

W. A. A.



Kathleen Hamel
Treasurer

Ellen Quirk
Vice-President

Orient Weis
President

Alice Widmer
Secretary

The whole year through we see the Webster girl displaying her physical prowess in games of endurance and skill. Autumn shows the athletically inclined Websterite riding down some pretty trail astride a gallant steed, or, perhaps, in basketball togs practicing persistently to make the big team. The first blast of winter sees the Webster girl, skates in hand, en route to the Winter Garden. Spring brings forth the tennis racquet and the courts of Webster are filled with aspirants after Helen Wills' crown, while others answer the call of greens and fairways. And hiking—do these Webster girls hike? Ask Alice Widmer.

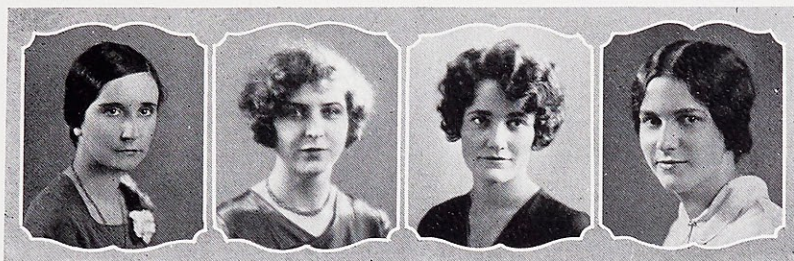
But whence all the zeal for these varied activities? The enthusiasm has been generated by the Webster Athletic Association under the guidance of Miss Genevieve Barthel, the director of the Physical Education Department. Realizing that no progress could be made in athletics if every student was not vitally interested, Miss Barthel organized the W. A. A. which presents the athletic activities of the school directly to the student body.

The W. A. A. operates under a "point system". It holds out to its members awards for participation in various sports. The requirements exacted of its members are scholarship, sportsmanship, health, and technical skill. Any student with scholastic standing is eligible for membership, and only those who are full-fledged members of one of the college classes may play on any team.

For the performance of the different sports those participating receive an allotted number of points, the aim being to acquire a certain amount of points and thus to receive W. C. emblems, especially the final large W, which is the goal of every Webster athlete.



Student Association



Josephine Rabbitt
Treasurer

Margaret Vollet
Vice-President

Gertrude Jolley
President

Marie Reynolds
Secretary

The Pioneer has carried on! For the Student Association, designated by its founders "The Pioneer," has carried on through one year of service and loyalty to its Alma Mater. It was through the untiring efforts of members of the Class of '28 that the Association came into being, for it was they who recognized the need of organized student activity with the steady growth of the college.

The object of the Association is to further student activities and student welfare by unselfish co-operation with the faculty, to promote those principles of good-will and faithful service upon which our Alma Mater was founded, and to encourage and maintain ideals of morality, loyalty and scholarship.

The Student Council is composed of twelve members elected from the student body. The Faculty chooses two representatives from the Senior and Junior classes; the Senior class elects four representatives; the Juniors, three; the Sophomores, two; and the Freshman class is allowed one representative. The officers of the Association are elected from the Senior and Junior members of the Council. According to the Constitution, Faculty and Class representatives must be chosen early enough to permit election of officers for the following year in the second week of May. The President and the Secretary are chosen from the Senior members, and the Vice-President and the Treasurer from the Juniors.

It is the object of the Council to comply with all the regulations as set down in the Constitution of the Association and it is their sincere hope that they and their successors will continue to "carry on" in maintaining the ideals and standards for which Webster was founded.



Lauretanum

*Thirteen is always unlucky,
Such is the general complaint;
But thirteen like cards at a bridge game
With joy would make anyone faint.
—T. G.*

82



Arts

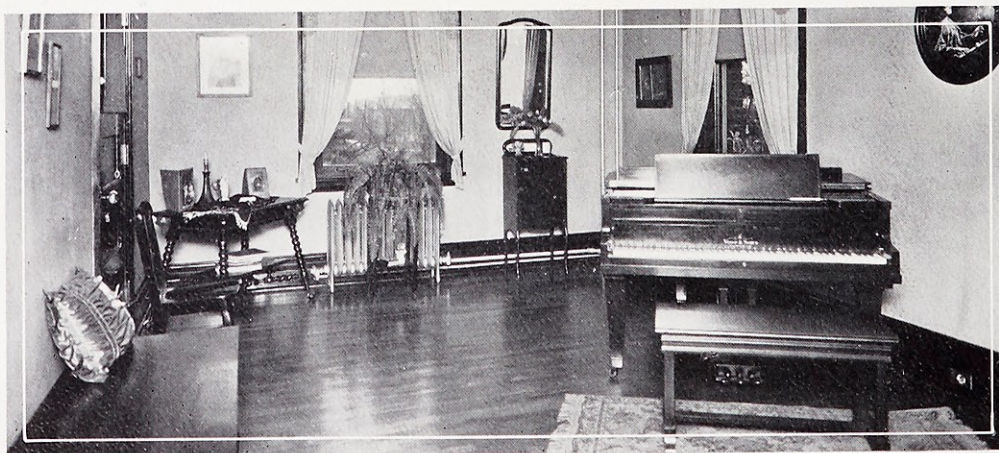
Conservatory of Music

The Loretto Conservatory of Music has always played an important part in college activities and functions, contributing whole-heartedly to all public occasions and sponsoring the interests of College and Conservatory alike. It is situated in the west wing of the Administration Building, the second floor being given over to the activities of classroom and studio, where at all hours of the long day the mingled sounds of piano, violin, harp, 'cello, and saxophone rise above the varied noises of the corridors.

Courses leading to Bachelor of Science in Music and Bachelor of Music degrees are given by an excellent faculty. Normal training in piano methods of teaching with a teacher's certificate is another important feature of the department, and recently the curriculum has been enlarged with the addition of a course in Public School Music Methods wherein principles of teaching music in the grade schools and in high schools are intensively studied together with the mastery of the art of conducting glee clubs, orchestras, and the production of operettas and cantatas.

Perhaps the most important Conservatory affair given this year was the Schubert Centennial Program, which attracted much favorable attention in music circles and elicited the enthusiasm of several notable critics upon the splendid work done by the students. During the past year the Music Department also sponsored the publication of the College Song. Various clubs and organizations add interest to the Conservatory, among which are the Choral Club, the College Choir, and the Orchestra.

Interest in the Conservatory is increasing steadily with the years, and it is to be hoped that in time the true excellence of the department will be universally acknowledged.



A Studio in the Conservatory

Art Department

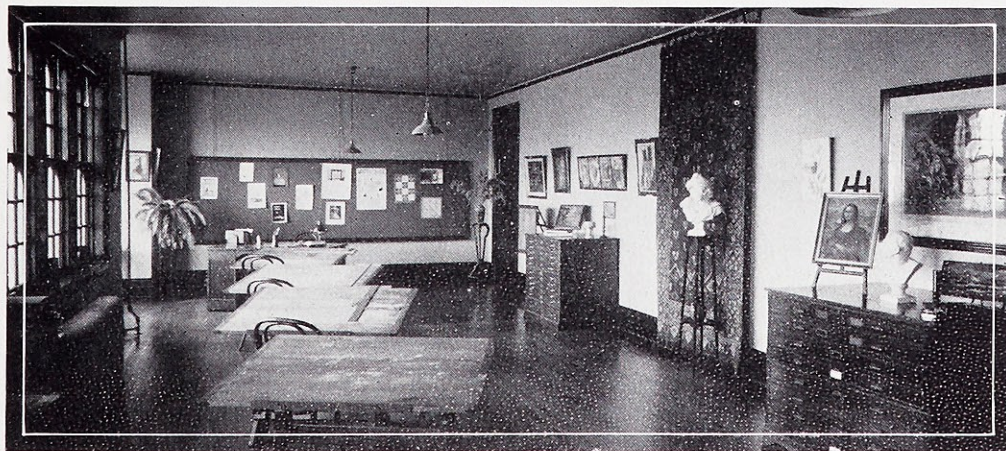
One of the most interesting and well-equipped departments at Webster is the new Art Studio. Art and its intensive cultivation is now acquired in the suite of rooms on the third floor. The studio faces the north, where by virtue of its situation, excellent uniform lighting is obtained.

The studio contains a splendid collection of casts from famous pictures of the most celebrated artists, tapestries, and, not least of all, the products of Webster's own artists. It also boasts of a library, consisting of numerous books and current magazines related to art. This lends a charm and interest to the studio, and is at the same time a source of inspiration to the students.

The department furnishes instruction in drawing, painting, illustrating, and interior decoration, as well as in costume designing.

The field of advertising and publicity work today offers a broad and remunerative career to those who are so talented. Commercial Art has grown by leaps and bounds during the last decade and occupies a prominent position in the business world, since the prosperity of a business today depends to a great extent upon its advertising. The force of an advertisement depends in turn upon the appeal made by the illustration, which must attract the attention of the passerby before he will read the copy.

Besides untold pleasure in the learning, many accomplishments may be acquired in the Art Department of Webster College. If the student, who has studied there, does not choose a business career, she will be well fitted to decorate her own home in an attractive and individual fashion, to design charming clothes to her own fancy, and to pass her leisure hours in the pleasant occupation of drawing and painting.



Art Studio



Rosalind and Celia
C. Cody, H. O'Brien

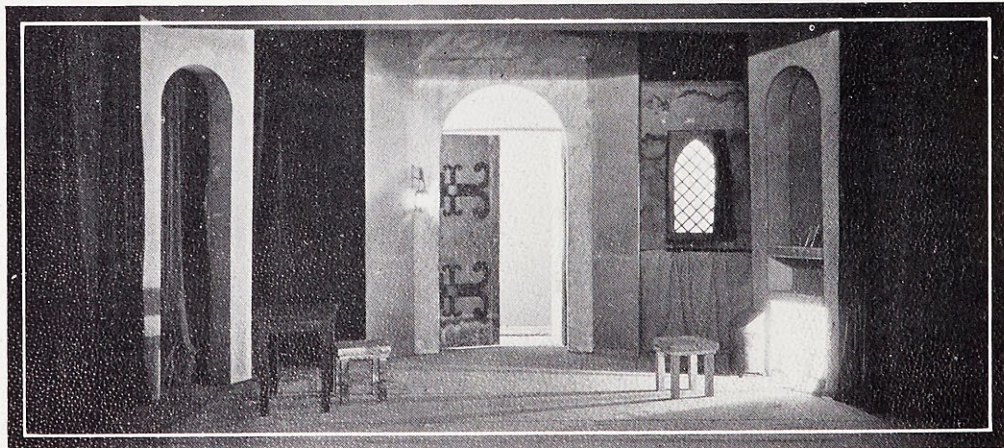


C. Cody as Rosalind
"As You Like It"

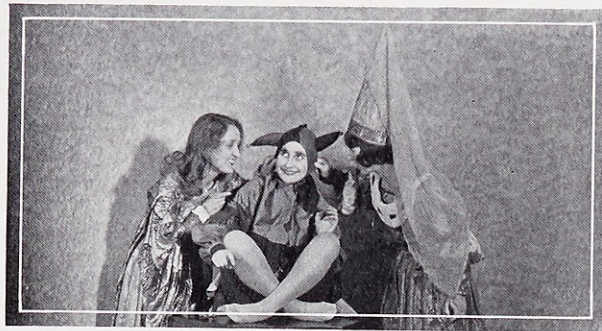
Dramatics

Every true community in America has its Little Theater; Webster College has had hers the greater part of her existence. The company, producing the plays in this Little Theater is known as the Loretto Players. This company changes its personnel from year to year, but it is always a group of young women, who, besides being talented, are sincere in their work. However, much of their success is due to Mrs. Anna McClain Sankey, their very able director, and to Sister Marie Anthony, a very artistic stage manager.

During the past year some clever short plays have been given. Outstanding among these was the one-act play, "Ronald Castlemaine's Romance," by Louise Armstrong, in which masks were worn by the characters. Through the efforts of Mrs. Sankey, these



Stage Setting of "When the Whirlwind Blows"



Rosalind, Touchstone and Celia
C. Cody, J. Rabbitt, H. O'Brien

Dramatics

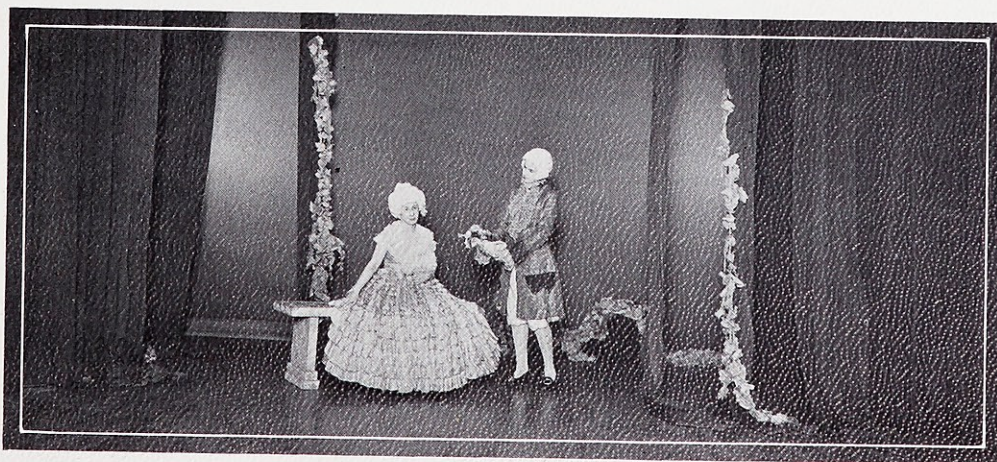
masks were secured from the artist who created them; and thus was shown on the stage of our Little Theater the modern development of the ancient Greek mask.

The versatility of the company is demonstrated by a glimpse at a program of one-act plays given early this fall. On this program there is a farce of the broadest type, "When Shakespeare Struck the Town," and an Essex Dane melodrama, "When the Whirlwind Blows," a play of Russia in the days of its revolution.

The final and most important play produced by the Loretto Players each year is always a Shakespearian play. "As You Like It" was chosen for the year 1928 and was presented in the early part of May by two casts. Since the players put their hardest work into this, the closing play, they gave two unusually fine performances.



E. Fleming, M. Broeker
"Ronald Castlemain's Romance"



M. M. Everroad, J. Reddin
"Beau and Belle"



D. Walsh, M. Parker, P. Farrell, M. Barthel, J. Abell
Chorus of 1928



E. Quirk, O. Weis

Vaudeville, 1928

The Senior Class of 1928 presented a program distinguished by its vigor and freshness in the Vaudeville in May of that year. The keynote struck by the Varsity Drag of a very modern and agile chorus was followed consistently throughout. Among the numbers, remarkable for their uniform worth, a parody of "As You Like It" was especially noteworthy. Shakespeare would never have recognized his Rosalind in this maid with the streaming curls, blue hair-ribbon, and "lollipop," adoring the diminutive Orlando who floored his giant opponent with the blow of a boxing glove. A clever, collegiate skit, tap dancing, singing, a Black Crow monologue, all with the piquant spice of novelty, were high spots in the entertainment. Marguerite Barthel, Juanita Abell and Helen McGuire, as managers, were largely responsible for its success.



T. Pape, A. Boone, M. Powers, A. Ryan, A. Widmer, C. Geary, M. Wegman, E. Fleming
H. McAnulty
"How Do You Like It?"

Lauretanum



E. O'Malley C. Emge L. Hyslop O. Weis
 R. O'Reilly D. Fairall M. Hyslop E. Quirk
The Evolution of the Waltz

Vaudeville, 1929

"A Webster Tornado in Fifteen Gusts" was the significant title of the vaudevillian efforts of the class of '29, a production ably managed by Rosemary O'Reilly and Helen Eaves, and held in January instead of May as has previously been the custom. A bustling and pompadoured group, headed by the inimitable Thelma Pape, reverted to the type of 1894 in one hilarious number; Ann Ryan presented a versatile and many-hatted mellerdrummer, a heartrending story of love in the heart and colds in the head, and five choruses, in clever costumes, presented lovely dance numbers. The gentler side of the program was represented by the breathtaking "Evolution of the Waltz," and a Schubert number. After much hard work the vaudeville was successful not only financially but also as excellent entertainment.



H. McEvoy, M. Everroad
"Song of Love"



H. O'Brien, D. O'Keeffe, B. Sturgess, A. Widmer, D. Walsh, B. Sharp, K. Hamel, T. Pape
The Review of 1894

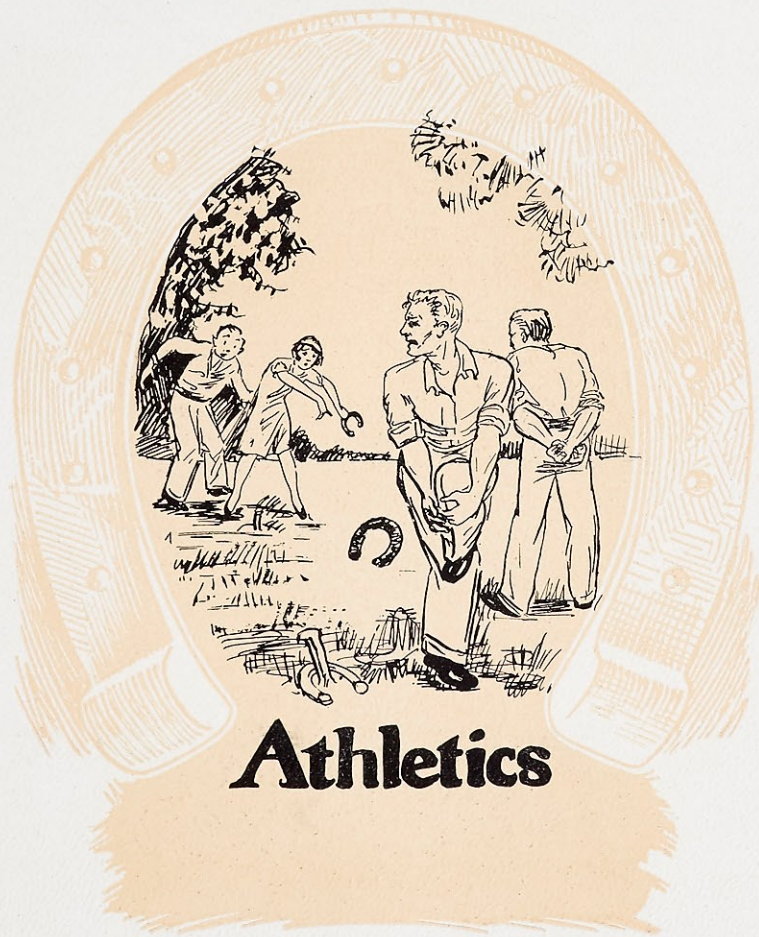


Lauretanum

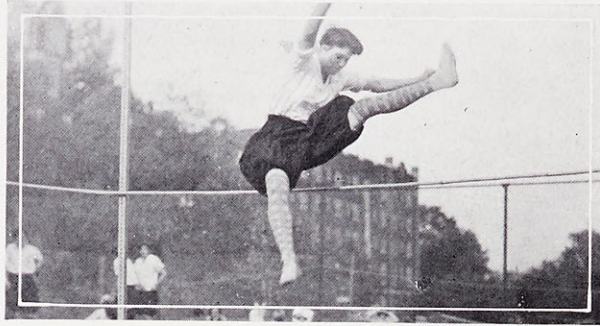
*A howling dog means death to someone,
Says the old, time-honored tale.
And many are afraid and tremble
When they hear the mournful wail.*

—T. G.





Athletics



E. Quirk
The Winning High-Jump

Field Day

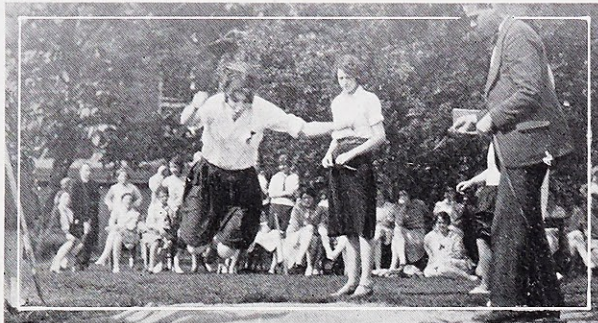
Field Day! Field Day when romance of athletes comes forth in all the glory of taunt, trained muscles, beauty of form, loveliness of line! Field Day when one sees a group of young, fleet-footed girls crouched low in expectancy! A shout rings out! A signal is given! Slim smooth ankles skim over a long white stretch of shining road!

Again, the great high jump holds sway. Eager spectators watch breathlessly as the marker climbs higher than ever. There is a deep silence, a long, drawn-out oh-h-h! then a bedlam of appreciative applause—Ellen Quirk, Sophomore, is hilariously acclaimed victor! Immediately after, the relay races and the shot-put take place. Many and varied are the attempts, many and varied are the results, but at length a noisy cheering bursts from the sidelines—Ann Ryan wins first place!

Thus, event after event fills the sunshine hours of the May afternoon. The blue, red, and white ribbons are pinned, all too quickly, upon breathless, enthusiastic victors. Across the field, the swift gleam of racquets catches the sun's gold light. Match after match plays off its finals; eagerly the specators watch the progress of the spirited games. There is a tense moment, and then a shout of victory. Alice Widmer is hailed a champion!



Field Day Basketball Throw by Alice Widmer



R. Bergfeld in Broad Jump

Field Day

The sound of music fills the air; the band has begun to play as the athletes form in line and begin their historic parade about the campus. On and on until the line forms a giant W before the trophy stand where Coach Barthel smiles approval on her valiant army. There, resplendent in the rays of the setting sun, shines the enormous silver cup—trophy of the classes of Webster. Upon its smooth and shining surface, the "Class of '30" will be inscribed, first victors. As the years shall pass, so shall the sharp steel-tipped instruments of the engravers pass over the cup's surface, marking thereon the glories of our college athletes!

Shadows begin to fall and the crowd disperses to the dining hall where is spread a delectable supper for the friends and participants of the annual Field Day celebration. A moon rises slowly over the chapel towers; night has come and with her the end of another Field Day, which has seen the athlete in the fullness of her development and the glory of her achievement! Another list of champions is hung upon the walls of Webster as Coach Barthel sends out her army of trained, disciplined, enthusiastic, athletic college women!



H. O'Brien, D. Walsh, A. Murphy
A Running Event



A. Murphy in Field Day Event

Basket Ball

"We want a basket!" "Stay with them team!" and other familiar cries ring through the air of Idle Hour as the Freshmen and Sophomores, traditional enemies, battle for supremacy in Webster's inter-class basketball league. "Those Freshmen simply can't win," cries one energetic Sophomore. "Oh! can't they?" answers a brave freshman who has forgotten her timidity in the excitement. Thus among yells and cheers the teams are off in a stirring game.

Each season all the classes are represented by their own team and during the year a contest is held to determine the winner among them. The class having the highest number of points at the end of three years is presented with the victory cup. Webster is not content, however, with just class leagues, but from all these teams a big team is selected which is to carry our laurels into other places. Accordingly, games with Harris Teachers' College, Central Wesleyan, Maryville and other colleges are scheduled each year to add interest and enthusiasm among the students. No game, however, is looked forward to with more eagerness than the one with the Alumnae Team. That game is the one of most importance in the year, because then Webster's old girls come back to battle with the College stars just for the renewal of friends and for old times' sake.



D. Meyer, G. McBride, R. Bergfeld, A. Ryan, K. Hamel, M. Hyslop, F. Sloan
J. Reddin, A. Murphy, L. Rehagen, C. Sullivan, A. Widmer



A. Widmer, A. Ryan
Trophy Winners, 1928

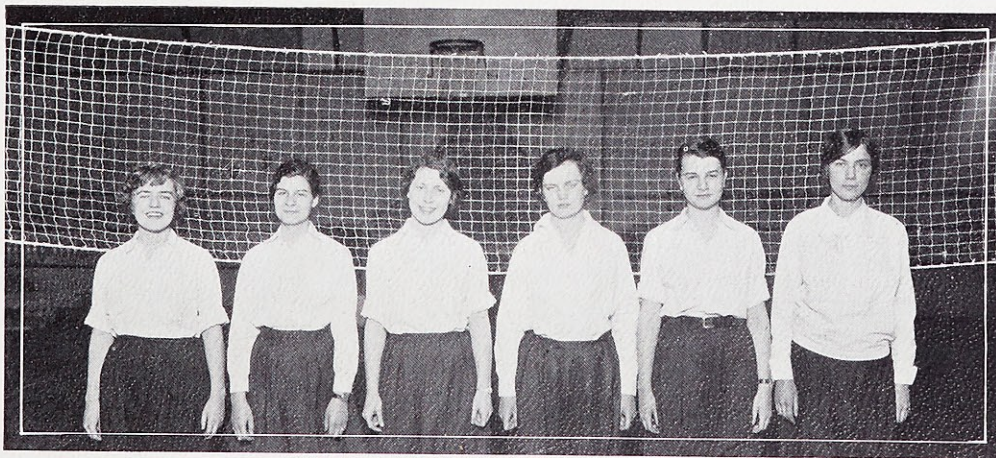
Volley Ball

As usual Webster's athletic enthusiasm ran high during the volley ball season this year. Since each class boasted a team of its own, the annual tournament could be nothing but a huge success. That it came up to the expectations of all is proved by the sportsmanlike rivalry and competition evidenced at all of the games. The Upper-classmen needed no encouragement, of course, and the Freshmen readily caught the spirit of the race and built up a fine team which was to come out in the finals second only to the Sophomores.

The Sophomores established a lead by defeating the Seniors in their first game. Their next contest was with the Freshmen, victors of the Junior-Freshman game. This resulted in a Sophomore victory and gave them a one-game advantage over the Freshmen.

In the second game between these two classes the tide turned, practice showed, and the Freshmen marched proudly off with a victory. The score was now tied, each team having one victory over the other; the next game would be the deciding one.

According to prediction, the final game was the most exciting; points passed from one side to the other in a hub-bub of exciting screams and cheers from the spectators. Finally the Sophomores triumphed and succeeded in gaining twenty points toward the class award which they are struggling to win for the second consecutive year.



D. Walsh, A. Widmer, H. O'Brien, M. Ludden, K. Hamel, A. Ryan
Sophomore Team, Volley Ball Champions



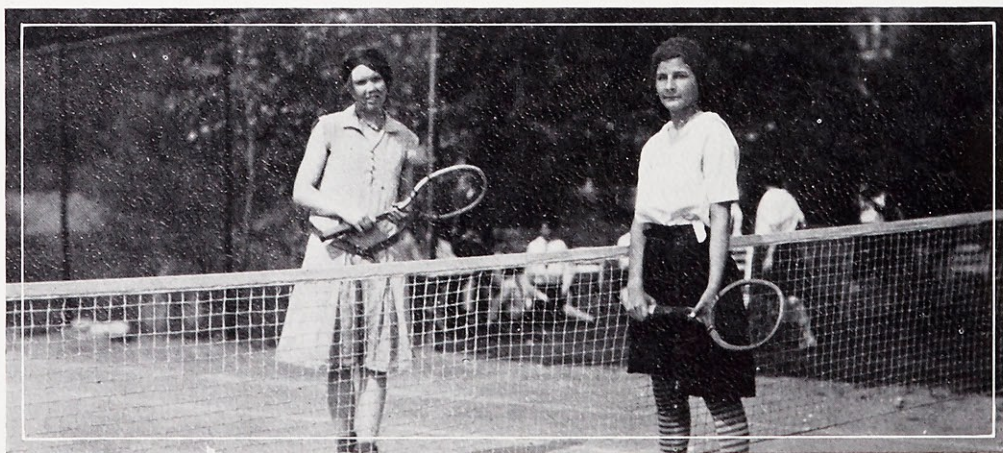
A. Widmer

Tennis

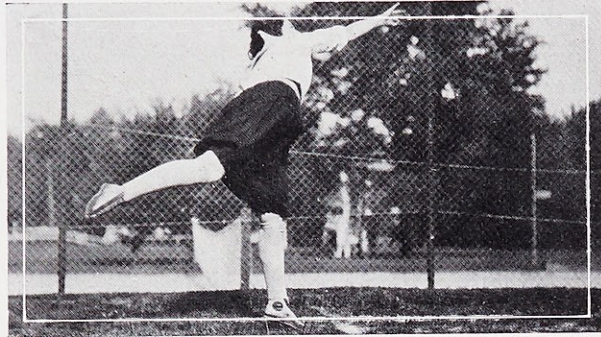
Tennis! The whirl and rush of agile figures, strong young arms with forceful serve and steady stroke, a white ball bounding back and forth on smooth courts. Thrills, excitement, tension! Such was last year's tennis tournament.

Entries were many, competition was keen and enthusiastic, and at last, after several thrilling encounters, Eleanor Frederic and Alice Widmer came out on top as finalists. The match for the championship of the College was played on Field Day and the tennis court was the scene of much excitement. One finalist was a Sophomore, the other a Freshman, and the all-year-class-championship cup would probably go to the class which received points for winning the tournament! The Freshman player, after a hard struggle, finally won and received, with the tennis trophy, points toward her "letter" and points for her class.

As spring and warm weather approach, everyone is thinking happily of the good times to be had on the tennis court and of the coming annual tournament. Spring fever may seriously affect our studying, but it certainly doesn't affect the enthusiasm for tennis. And you never can tell, one of our girls might keep right on "enthusing" and playing until she wins the world championship! So clear the courts for the tennis players.



Eleanor Frederic, Alice Widmer
Runner-up and Winner after the Tournament



Shot Put by G. Miller

Minor Sports

Horseback riding is becoming one of the popular outdoor sports at Webster this year. Every Saturday and Sunday, and oftentimes during the week a group of girls can be seen cantering over the trails at Osage. Despite the fact that most of the girls "feel the effects" for a week or so after their first ride they always "come back for more" and are soon keen enthusiasts of the sport.

Spring is here, and ice-skating must cease until next fall when the Winter Garden again opens its doors and Mother Nature freezes the ponds and rivers. Many Webster girls frequented the rink during the winter months and those who had not mastered the sport before this year are now becoming quite skillful.

Swimming at the Town Club is again in vogue! The Athletic Association made arrangements with the Club for the use of their pool every Saturday morning from ten-thirty to eleven-thirty. Those who are fond of this sport are now taking advantage of the opportunity offered them and seem to be enjoying their weekly plunges immensely.

The Freshmen and Sophomores are to have baseball teams this year and will contest for the inter-class championship. This form of sport is rather new at Webster, since until this year there have been no class teams organized and points have not been given for participation in it.



*D. Bender, E. Weinacker, E. O'Malley, E. Simon, J. Reddin, B. Marshall, T. Gesell
Following the Trails at Osage Country Club*

Lauretanum

*It's true that horseshoes make a "good luck" claim,
But, when "Sis" tries pitching in a game,
It's bad luck for the man whose leg
She rings when she aims at the horseshoe peg.*

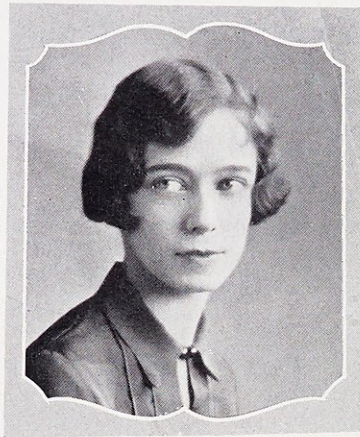
—T. G.





Publications

The Lauretanum

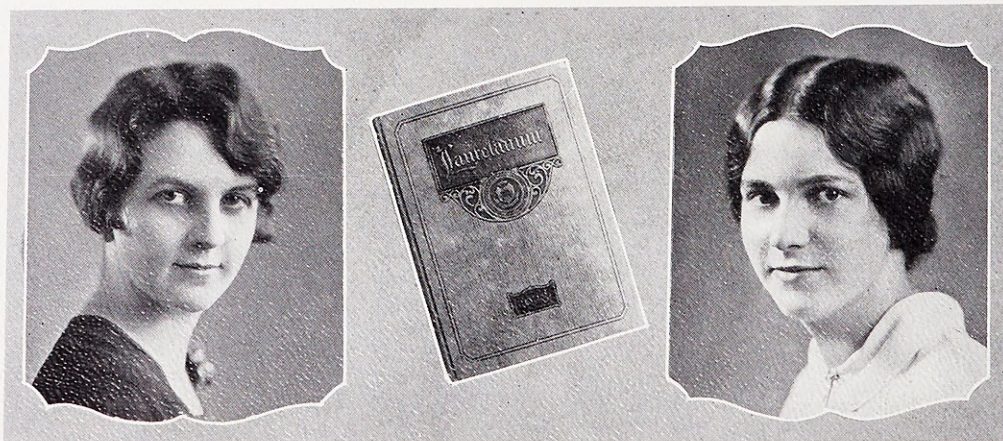


Thelma Gesell
Editor-in-Chief

The curtain rises. The "Lauretanum Revue of 1929" is about to begin. An eager, critical "first-night" audience awaits its presentation. Behind the scenes is the thrill of expectancy and doubt. After all, one Revue is patterned in general just like another; the fundamentals remain the same. For ultimate success one must rely upon the theme running through the show, giving it unity and coherence, lending a motif for the display of artistry in the designing, staging and coloring, adding the touch of "newness" to rather ordinary events, endowing it with the charm and piquancy of originality and personality. Upon such new treatment of the usual, every Revue must rest. Accordingly, while the audience awaits its unfolding, the producers and stage managers fling back the all-important question, "Will it 'click'?"

Thus it is with the LAURETANUM. The Staff, as producers and managers, have sought to portray the usual events vividly and interestingly. Their stage and settings are the familiar scenes of every day; their Revue is a review of the most important occurrences in a year at school, and it differs from the usual show in this, that its actors are also its principal audience. Since this was the Sixth Annual Revue, a theme which would lend variety and enjoyment to the perusal of many ordinary events, and yet be closely related to the scene of these events, must be chosen.

According to tradition, thirteen is unlucky, and it was Webster's thirteenth year. Superstitions, then, would be the theme around which we would stage our Revue, and



Marie Cregan
Associate Editor

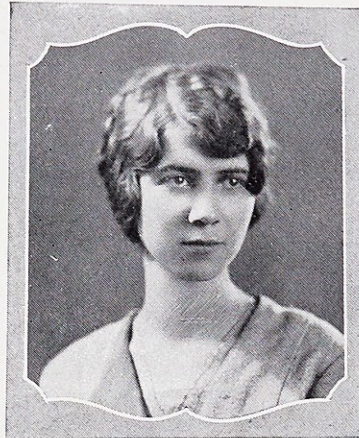
Marie Reynolds
Advertising Manager

The Lauretanum

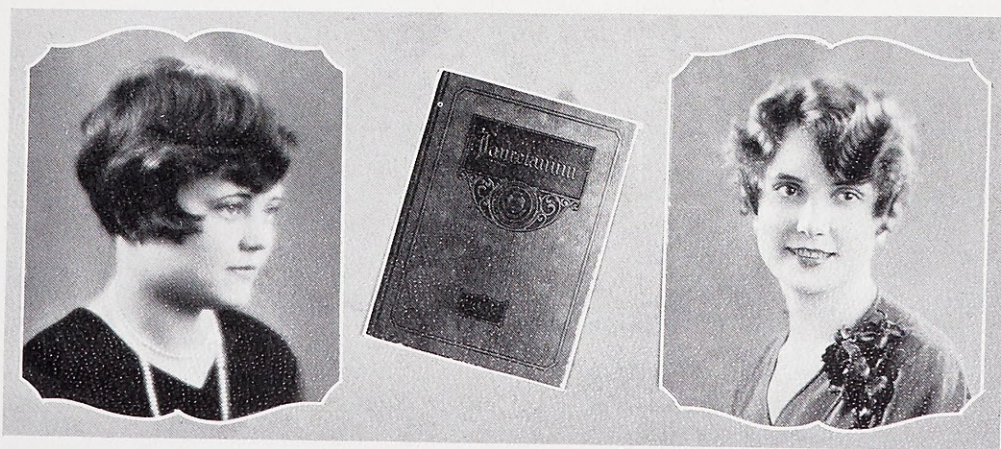
in the designs for its Five Acts and their concomitant Scenes we would satirize the best-known of the modern superstitions which, in spite of their ridiculousness, many people still believe.

And now, at last, after months of planning and careful attention to the minutest details of production, design, and staging, we present our Revue—a story of life at Webster. Many evenings have been spent “on the job”; many sacrifices have been made, but they were made willingly. The unpleasant things are more than outweighed by the pleasant memories we shall always cherish. Many difficulties have been encountered, the hardest to overcome being those financial worries which have been met with in the impediment to securing advertisements because of last year’s Carnival and the activities this year of the Loretto Foundation, which is raising funds for the College; because of this financial set-back, artistic production of the book has been hindered, particularly in the new “Spotlight” section. However, even when the task seemed hardest, it has been the slogan of the Staff, as of the managers of a Revue, “The show must go on!”

No doubt succeeding Revues of the LAURETANUM will become more beautiful and more elaborate. This is to be hoped for and expected. However, in the presentation of ours, we have done our best to give an accurate record of Webster’s progress and, in so doing, perhaps to add a little to her glory. The curtain has risen on the “Lauretanum Revue of 1929.” Will it “click”?



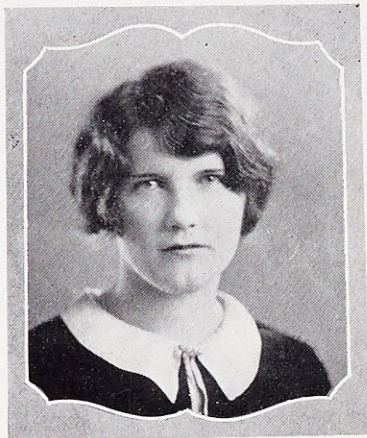
Catherine Rohan
Business Manager



Helen Eaves
Circulation Manager

Margaret Mary Brey
Art Editor

The Loretine

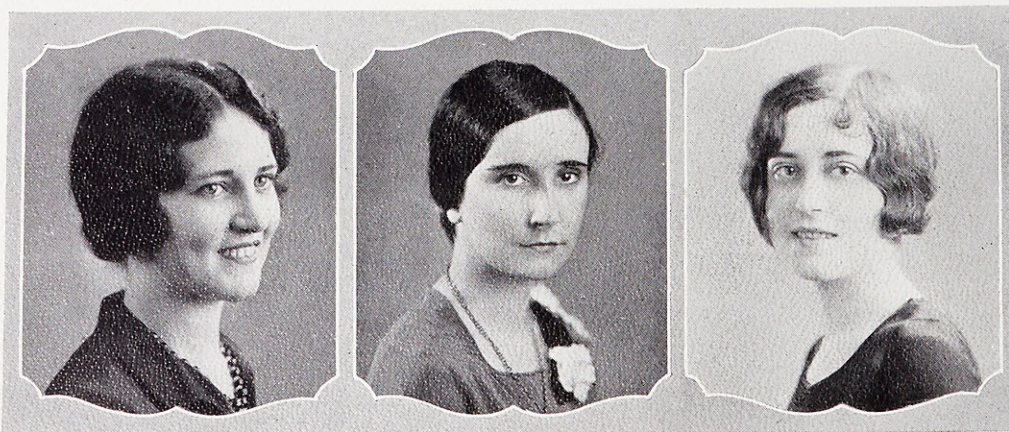


Adele Daniel
Editor

Loretine! Webster's college quarterly! The pride, the boast, the dream-child of a modern, progressive collegiate institution! Growing from a tiny periodical, first issued in 1907, to a splendid magazine issued four times a year, the Loretine has become the foremost literary publication of Webster. And who is responsible for this publication? No other than she who lives in the hearts of her girls—Sister Louise! It was she who began this periodical as the official organ of the Loretto Academy of Kansas City, and it was she who supervised its development for twenty-one years! Is it any wonder, then, that the Loretine is dear to every one of us? Is it any wonder that we are extremely proud of its tremendous growth and successful publication? Look back into the years and

see the first tiny books making a tentative appearance; look out today and see the wonderful magazine the girls of Webster College are editing. The quarterly has become so much a part of the literary life of the institution that in 1927 an annual literary contest was begun and sponsored by the staff.

Adding to the unique charm of such sections as "Near and Far With the Old Girls," and "Just Among Ourselves," is the lately inaugurated specialization of various issues. Thus, this year sees the "Alumnae Number," edited by Mrs. Emily B. Tinker; the "Philosophy Number," the "St. Louis Number," and the "Short Story



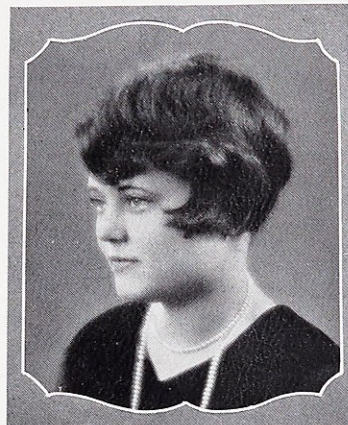
Rosemary O'Reilly
Near and Far

Josephine Rabbitt
Advertising Manager

Marie Rice
Art Editor

The Loretine

Number," by the student editor who has devoted her numbers to the depicting of the life and interests of the college girls. In the "Philosophical" issue was attempted what had been considered, in the years before, entirely too difficult and abstract a work. One has but to read the number to realize how thoroughly the principles of philosophy are grasped by our modern Catholic young college women. The second issue, the "St. Louis" publication, endeavored to show forth the religious, aesthetic, social, intellectual and collegiate advantages offered, not only to the student of Webster College, but to the student, who, coming to Webster, comes also to the progressive city of St. Louis. The final edition, the "Short Story" number, will be devoted entirely to the new form of literary composition which is attracting such universal recognition today; and, as a further appreciation of the merits of this movement in the literary work, the annual prizes, offered by the staff of the Loretine, are to be awarded to the writers of the three best short stories submitted.



Helen Eaves
Business Manager

The Loretine, then, goes forth the quarterly prodigy of a young college; the dream-child of enthusiastic, ambitious collegians; the incense upon the literary shrine erected by a woman of far-seeing vision. May that incense ever continue to rise in perfumed clouds—our Loretine!

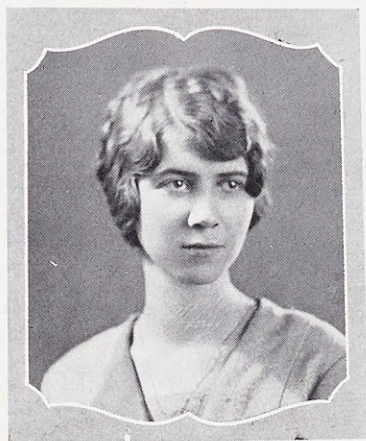


Catherine Hazel
Circulation Manager

Margaret Vollet
Just Among Ourselves

Frank Ward
Exchange Editor

The Web



Catherine Rohan
Editor-in-Chief

To anyone who has never worked on a school paper, much less edited one, the joys and sorrows of a journalist's life must always remain a mystery. She will never know the thrill of finding neatly typed copy lying on a desk and patiently waiting for the correcting pencil to scatter rather hieroglyphic printing insignia over it. She will never know the anxious hours of waiting for copy to come in from a consistent few, nor the many dire threats that rise in the mind, only to be suppressed as not worth while.

Because of the fact that THE WEB is the youngest of the College publications, its history of improvements is best known. This, its fifth year, finds THE WEB standing on its own feet, appearing regularly every two weeks, and greatly improved, not only in size, but also in a feature column. At the beginning of the last semester, THE WEB was a dignified, four-columned paper proudly flaunting heads, decks, and other newspaper forms to its public. But in the first issue after Christmas, the



Dorrit Barnicle
Circulation Manager

Margaret Vollet
Editorial Writer

Thelma Gesell
Anti-Sophia

Catherine Geary
Dramatic Editor

Estella Cavanaugh
Echoes of the Halls

Alice Widmer
Dramatic Editor

The Web

students and faculty were more than pleasantly surprised to find that their own college paper had graduated to five columns and a corresponding depth of column. Besides the continuation of the feature columns of last year, there is another column devoted to witty remarks on the topics of the day. It is known as "Anti-Sophia Says—," and in her musings many a queer twist of a very ordinary phrase warrants the justification of her name, "Instead of Wisdom."

The feature issue of the present year was devoted to the "Formal Opening of Loretto Hall" and was distributed four days prior to that eventful February 17, despite the fact that the two weeks previous to its appearance were occupied with the semester examinations and with the annual retreat.

All in all, the work of publishing THE WEB has not been easy, but the staff has done it cheerfully and diligently for the interests of its Alma Mater.



Erline Strothkamp
Assistant Editor



	Frances Ernst <i>Circulation Manager</i>	Veronica Ryan <i>Alumnae News</i>	Alice Clarke <i>Club Chat</i>
Elizabeth Dunne <i>Business Manager</i>	Dorothy Walsh <i>Athletic News</i>	Berniece Daily <i>Feature Writer</i>	Helen Marie O'Brien <i>Exchange Manager</i>

Lauretanum

*A young man came to sell a book—
The lady went to take a look—
The flower box fell on his head
'Cause a black cat crossed his path—"Nuff sed!"*
—T. G.



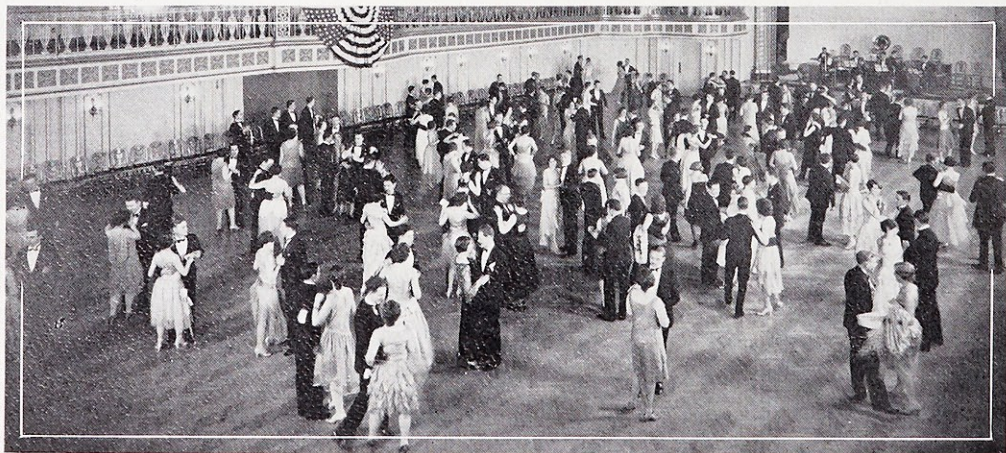
Social

Senior Prom

If only we might receive from some kind fairy a gift of words sufficiently beautiful to describe the scene of the 1929 Senior Prom; or, rather, that we might wave a magic wand which would paint that marvelous night for us. However, we are but mortals. We can only recall the beauty of the gold room of Hotel Jefferson, the soft light streaming from drops of crystal, which case now a mysterious blue and then a mellow golden glow upon the dancers, the balcony surrounding the room and lending just a breath of romance.

But a gold room alone could never make a prom. It is not the spell cast by gorgeous surroundings, but rather the spirit of youth which fascinates. At Webster's Prom there were girls who had lately tasted of the seriousness of college life but who, on that night, laid aside their sober musings for the joy which only youth experiences; these girls were beautifully dressed and radiantly happy. Such a gorgeous spectacle must have inspired every boy, who had been invited, to appear at his very best, to be no less the perfect gallant than those other young bloods who, long years before, in the early days of old Saint Louis, may have danced in that very room at the Jefferson.

Memory alone could paint vivid pictures of the Prom for us, but as a more concrete reminder, there were attractive souvenirs, book ends in the form of the entrance to Loretto Hall. Certainly every Webster girl thrilled with pride at the sight of them, adding one more to the many thrills occasioned by the 1929 Senior Prom.



Prom of 1929

Dances



The Spring and Fall dances are always important dates on Webster's social calendar and each is stamped with its own peculiar mark of individuality. The Spring dance, usually heralded by the return of birds and the early blooming flowers, is quite a gala affair. Girls who are experiencing that first disastrous siege of spring fever and chafing beneath the burden of sciences and languages made unusually irksome by gentle spring zephyrs find a natural solution for their problem in the Spring dance. There they may laugh and be gay with never a thought of stern duty just around the corner. The 1928 Spring dance, held in the Tower Room of the Congress Hotel, was most successful and proved beyond a doubt that the Juniors were clever and charming hostesses.

The Fall dance, since it is the initial social event of the college year, assumes a place of great importance. For the Freshmen, it is their first Webster College dance and for the Upperclassmen, the first major social event of another school year. The 1928 Fall dance, given in the Crystal Ballroom of the Chase Hotel, was planned by the Student Council acting for the Student Association. This deviation from the general custom, according to which the Seniors sponsor the Fall dance, was brought about by the Seniors themselves and proved to be a most satisfactory change, since it enabled the Student Council, by the success which it scored in this venture, to win, at an early date, the confidence and support of the entire student body.



The Fall Dance at Hotel Chase, 1928

Banquets

College banquets! Magic words for Websterites, who twice annually voyage to the ol' wardrobe trunk and tenderly drag out the inevitable "best rag," swathed voluminously in many layers of wrappings. Silver slippers and satin pumps of all colors and sizes are donned, and long and anxious is the consideration of the most becoming, appropriate piece of jewelry.

Somehow the June banquet lacks something of the happy-hearted spontaneity that marks the December festivity, perhaps because a beloved, familiar class is being forever ushered from our sight. There are songs and toasts, light laughter, gay murmurings of conversation, heaping baskets of multi-colored flowers, and the animated, glowing faces of girls down the long vista of white-draped tables. Perhaps for the last time are some of those shining-clad figures assembled together, and a hint of tears for the coming years of separation stills the merriment for a moment. But only a moment. Webster and June, an incomparable combination that makes effervescent the spirits of its followers!

An occasion of carnival and gay pleasure is the long-heralded Christmas banquet, where joyous red and green holiday colors flaunt their merriment down the candle-lit banquet hall. A jovial Santa Claus of the childrens' hearts merrily dispenses toys to the babies of the school, the "Freshies," and more sedate gifts to the Faculty. Later, in a sudden hush of the festivities, the Seniors proudly rise to receive their coveted little jewelled pins, generous applause greeting each girl. And, last of all, as a fitting close to a pleasure-heaped evening, the voices of Websterites are lifted in grateful song in praise of the Alma Mater, the tender mother who generously makes possible the delightful communion of her children.



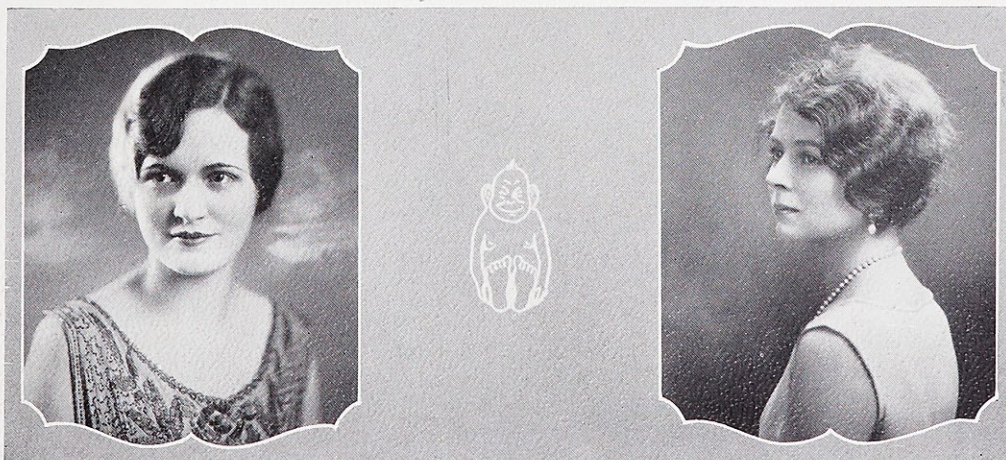
Christmas Banquet, 1928

St. Louis U. Prom

Once again the St. Louis U. Prom has held sway for a few short hours of gaiety and joy. Prom night, April 4th, was one of those soft, warm Spring evenings when countless stars twinkle merrily in an inky sky and young hearts are irrepressibly light and carefree. This was Nature's contribution to a perfect evening. The rest was furnished by the young people themselves; by the Committee which transformed the St. Louis University Gymnasium into a veritable ballroom in the fashion of an Oriental tent with canopy and decorations of blue and white and many tropical palms; by the Committee which chose as favors attractive little silver S-L pins; by the orchestra, a group of "peppy" players, the strains of whose gay, lilting music made dancing not only a pleasure but a necessity; by the various other Committees whose smooth functioning carried out the mechanical arrangements perfectly; and last, but far from least, by the young couples themselves who came happily and eagerly to this gala affair and gave it its life, its color, its merriment, its personality.

This year's Queen, Miss Margaret Mudd, who represented the School of Law, was the sixth Prom Queen. Among her ten attractive maids were two Webster girls, Catherine Hazel, representing Webster College, and Rosemary Brennan, representing the College of Arts and Sciences of St. Louis University.

We regret not being able to include in the Lauretanum a picture from the Prom, but all cuts and copy were in the hands of the printer before the affair was given. This article alone was held cut, pending the announcement of the Queen. We now congratulate her who has been chosen to re'gn over the Biliken's subjects. Next year, when she must relinquish her scepter, may it be entrusted to one of our own charming Webster girls.



Catherine Hazel

Rosemary Brennan

Webster Girls Who Were Maids at St. Louis U. Prom



Gertrude Jolley
May Queen

May Day

Evening falling on defiant trees
Sleeping like dusty fingerprints on flowers,
Or warily escaping straying stars,
And you, the Queen of May,
Who like those queens of old
Should wear Venetian rings, vivid on your slim fingers,
Or wear a tiny ivory painted fan
Carved in fourteenth century France.

Across the cool green grass they come, a Queen and all her Maids. Across the cool green grass, she waits, seated upon a throne of dripping May-time flowers, so soon to relinquish her sceptral sway, retiring queen, Juanita Abell. Slowly, slowly, they come across the cool green grass, two tiny flower girls, Harriet Widmer and Mary Margaret Waldschmidt, two tiny flower girls supporting the heavy crown of interwoven buds. Slowly, the Maids walk by—Mary Cook, Helen Margaret O'Brien, Marta Brown, Nellie Mae McDonald, Celeste Fehlig, Marie Scheer, and last *she* comes, *she* who shall reign over Webster! She of loveliness and queenly beauty—Gertrude Jolley!



M. Cook, H. O'Brien, M. Brown, J. Abell, G. Jolley, N. McDonald, C. Fehlig, M. Scheer
H. Widmer, M. Waldschmidt



Juanita Abell
Retiring Queen

May Day

The Maids arrange themselves on either side of the throne, the tiny tots relinquish their burden of flowers, the retiring queen places the crown-wreath upon the reigning queen's fair hair; and with a gracious smile the new ruler takes up the reigns of government.

Across the grey-green grass there comes the sound of gay, enchanting music. Fakirs and gypsies begin to thread their ways in and out among the crowds. A booth of lovely fragile, lace-and-ribbon creations gathers to its dainty bosom the fluttering femininity that strolls aimlessly about. A jaunty candy stand attracts the passersby—great silverwhite boxes splotched with yellow creams, warm chocolates, airy divinities, creamy fudges; and across the way, vying in popularity, the long be-ribboned cake tables flaunt saucy gingerbread men, and delicate angelfoods, and stolid, indifferent chocolate layer cakes. Everywhere, there is gaiety and mirth.

Beneath the boughs of the giant trees, tables are set. The delicious fragrant aroma of coffee steals out into the evening air; eerily designed lanterns illumine the deepening dusk like so many red inflamed dragon eyes. The hilarity is more subdued, a little weariness is creeping over all; stars begin to slide down into the deathless depths of night, intangible mosaics in heaven's blue floor. A moon trails languidly across the sky. Night has come. May Day is done.



J. Abell, M. Waldschmidt

Lauretanum

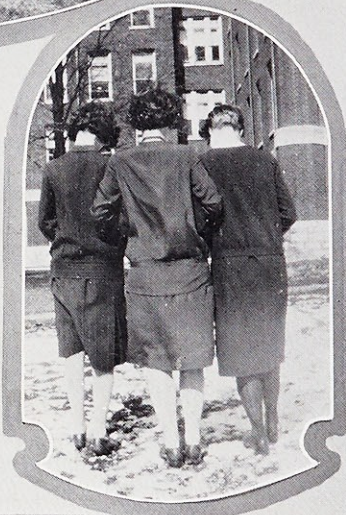
*If someone is talking unkindly
About you, your left ear will ring,
But, if it's the right ear that tingles,
They're saying a pleasant "something."*

—T. G.



Campus

Lauretanum



"High Up On a Hilltop"

"How About Me?"

"Whispering"

"School Days"

Lauretanum



"Let's Sit and Talk About You"
 "What'll I Do?"
 "Go In and Out the Window"

"Just a Memory"

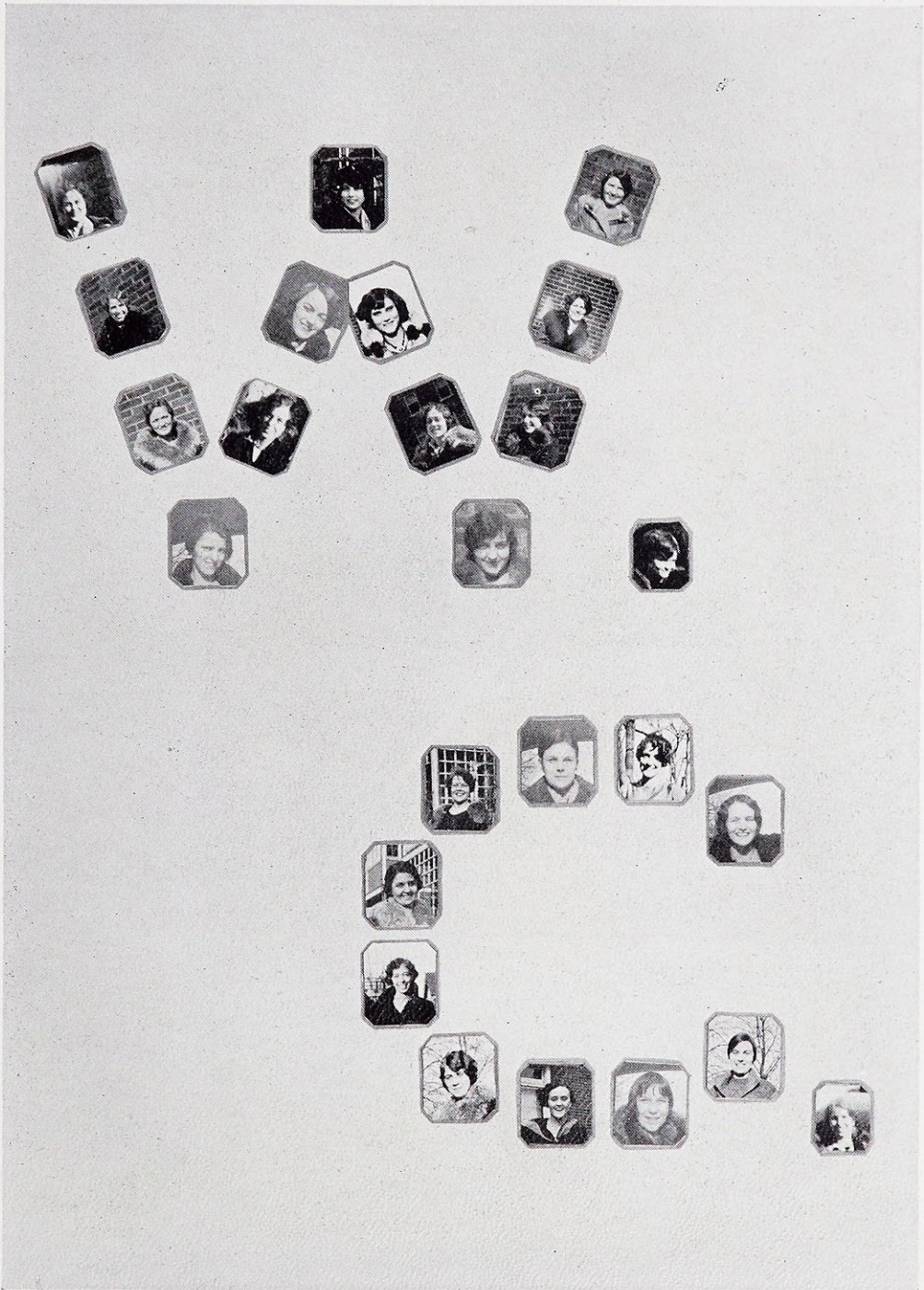
"There's a Rainbow 'Round My Shoulder"
 "Marie"
 "Nutty Over Horses"



Laurelannum

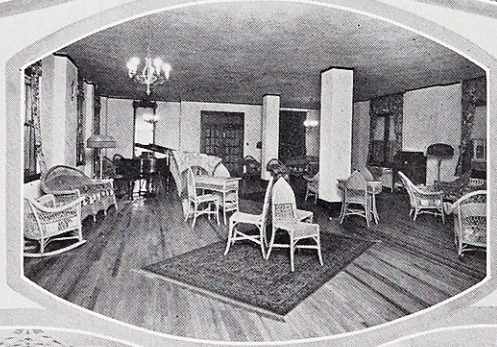
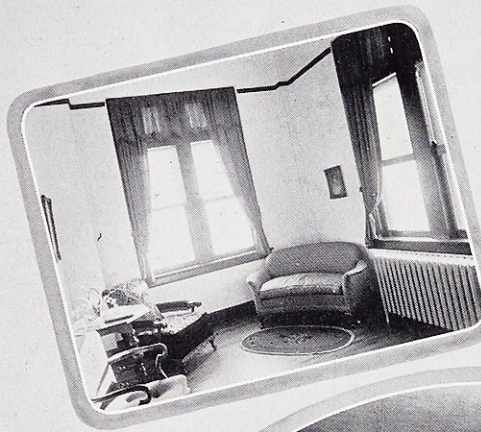
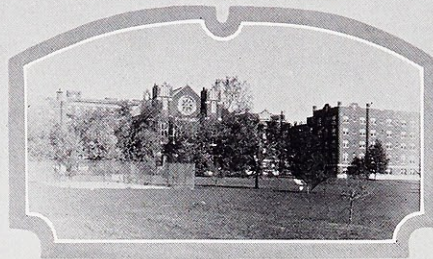


"Button Up Your Overcoat" "Collegiate" "The Missions" (Parody)
 "Angela Mia" "Me and My Shadow" "Makin' Whoopie" "St. Louis Blues" "Back In Your Own Back Yard"
 "Together" "Three Little Maids from School"
 "This is My Lucky Day" "Ain't We Got Fun?" "I Can't Give You Anything But Love, Baby"



Senior Smiles
"Hail, Hail, the Gang's All Here!"

New Views Around the College



Rear View of the College from the Campus
Sitting Room in Guest Suite
The Chapel, Redecorated
A Solarium
Social Hall
The Lounge

New Views Around the College



Guest Dining Room and Kitchen Suite

A Guest Room

The Cafeteria

Student Room

Another Guest Room in Use

Another Student Room

Dear Webster

(Dedicated to the Class of '29)

Words by
Anne E. Carr '28

Music by
Frances R. Ward '29

Briskly

Al-ma Mat-er Roy-al Moth-er long be your reign

O'er the hearts of those who en-ter your do-main.

CHORUS

We flaunt your praises to the sky Web-ster dear old Web-ster We

Copyright 1929. by Hunleth Music Co

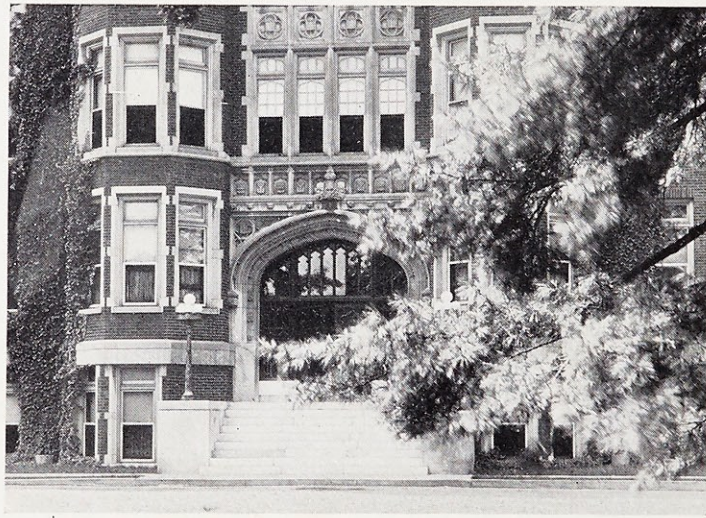
Laurelanum

sound your name from dome to dome. Dear old Web - ster How

sweet the thought of you, our home, Youve captured our hearts,

May we be true to you. Dear Web - ster!

Dear Webster, 2



Administration Building Entrance



The Spotlight

Foreword

Again the Lauretanum has taken a stride forward, a big stride calculated to advance her and to heighten the interest of her student followers. It is the addition of a new section, "The Spotlight," featuring girls prominent in various fields. These girls are representative types; many others might have been chosen had the Staff been able to include in the contest other talents, characteristics, and abilities. However, since this could not be done, the Staff selected six from the many possible fields which presented themselves, and organized the contest along the following lines.

Each class was permitted to select from the three upper classes a nominee for each type. Where the same nominee was chosen by two classes, the vacancy on the list was filled at a meeting of the Student Association since the rules required that four girls be put up for each field. Final election was held by ballot and the results are now disclosed with the publication of the Lauretanum.

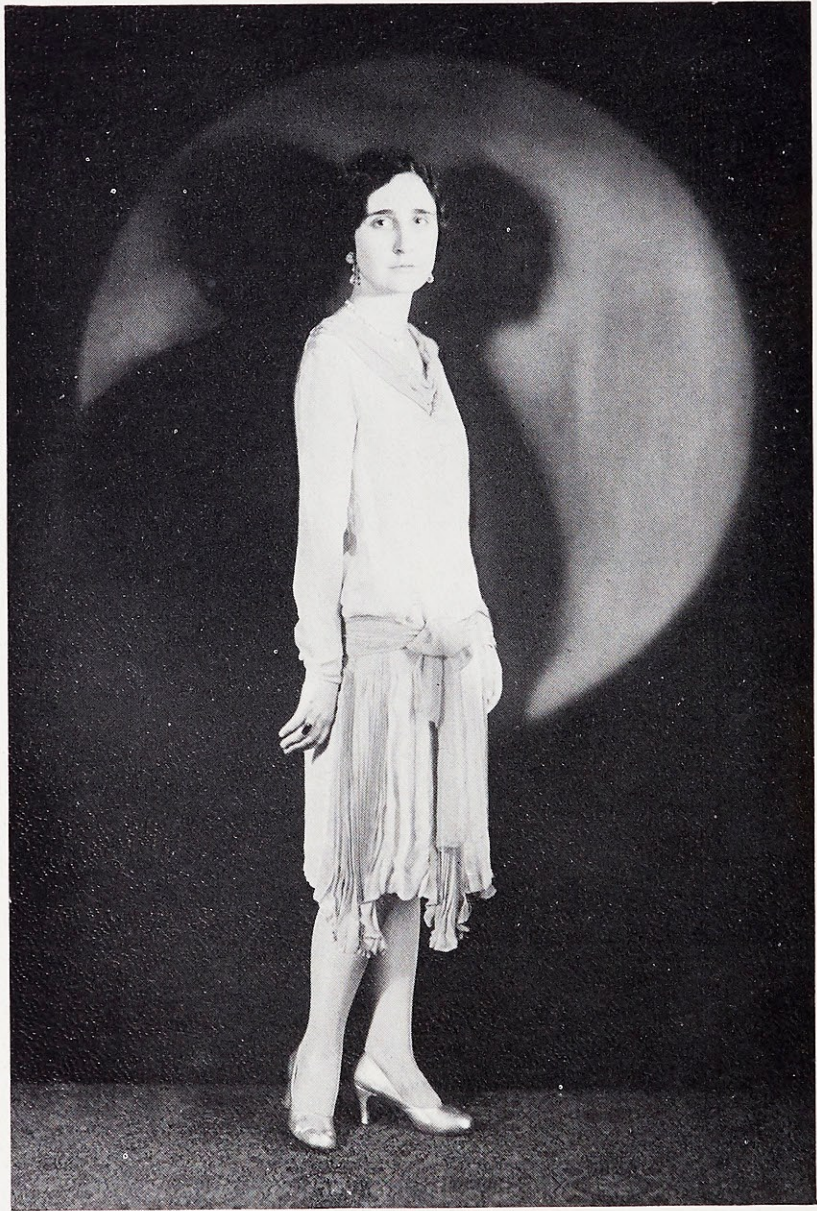
It is not the wish of the Staff to give precedence to any activity or to any person. For that reason, alphabetical order has been used in their presentation and in the following complete list of nominees: Dorrit Barnicle, Ruth Bergfeld, Adele Daniel, Thelma Gesell, Kathleen Hamel, Kathryn Haskin, Gertrude Jolley, Margaret Ludden, Rose Malon, Thelma Pape, Rose Phelan, Ellen Quirk, Josephine Rabbitt, Marie Reynolds, Ann Ryan, Helen Catherine Sherman, Margaret Vollet, Dorothy Walsh, Frank Ward, Orient Weis, Alice Widmer, and Bernice Wolff.



Intellectual
HELEN CATHERINE SHERMAN



Athletic
ALICE WIDMER



Active for School
JOSEPHINE RABBITT



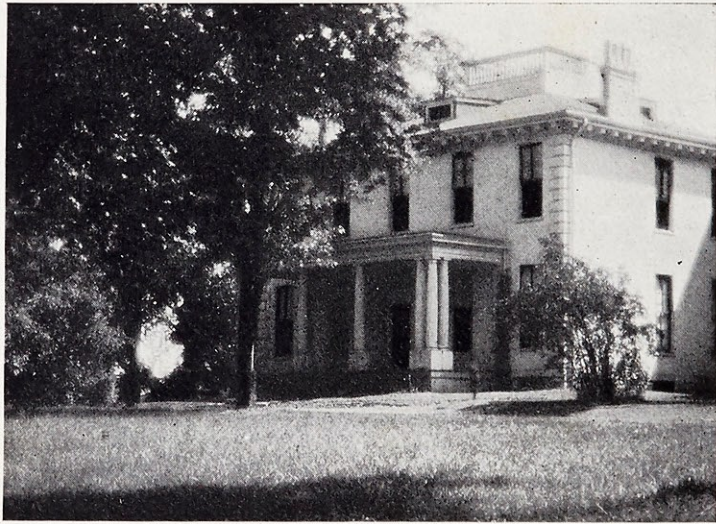
Original
FRANK WARD



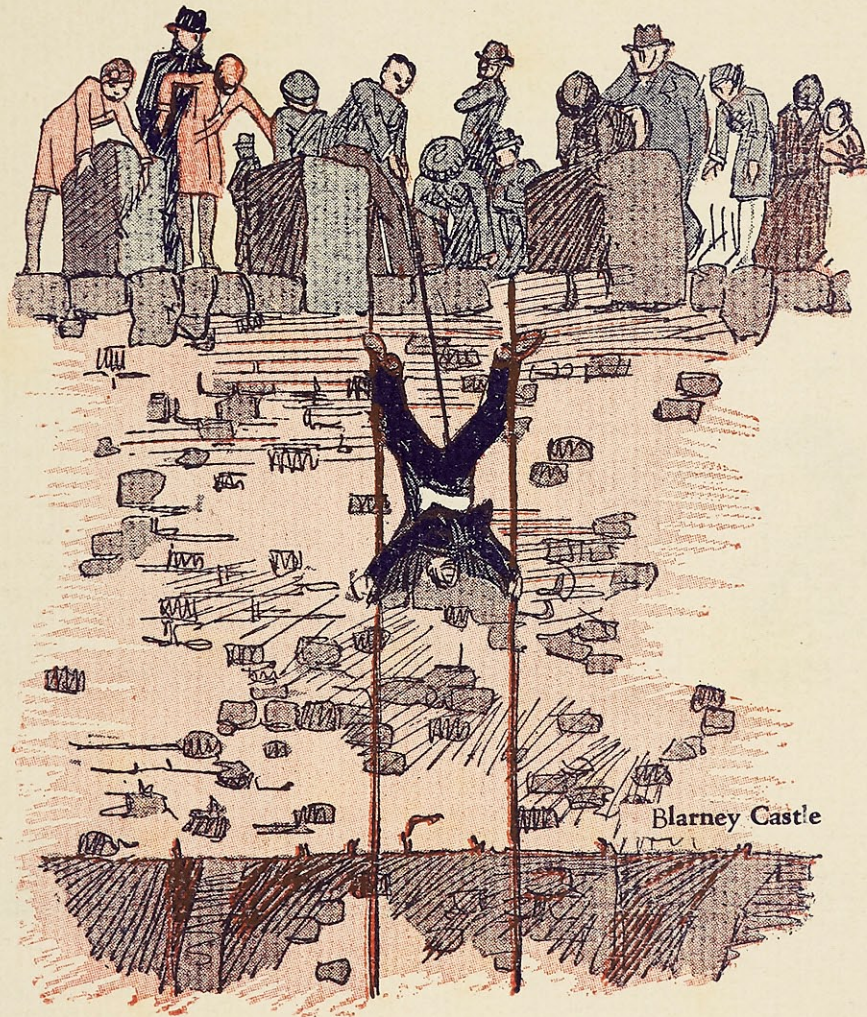
Popular
GERTRUDE JOLLEY



Witty
THELMA PAPE



A View of Nerinx Hall



Upsan Downs

Upsan Downs

Meet the Humor Section. Ye-ah-h-h?

1 1 1

We start our Humor section now.
We hope you think it is a wow.
We've done our best to find the wit
To make this section filled with "It."
Although some jokes to you are old,
Please laugh as though they were first told.

1 1 1

Gert: "Hey! What's the Quebec Act?"
Marg Ludden: "How should I know? That's last semester's work."

1 1 1

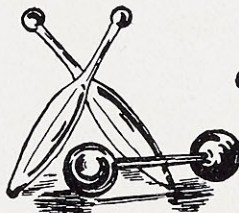
"RUSHES"

This poem concerns the Lucky Who Gets a rush from St. Louis U. There collegiates are quite right When it comes to Conclave night. And as this poem proceeds right on It then concerns the lucky one Who goes around with working men: 'Cause their rushes do not end As Christmas time comes rushing by; 'Cause working men know how to buy. But at the end this poem concerns The one who gets the rush—not years.

—T. P. '31.

WEBSTERITE CHOOSE!

(On Monday or Thursday at 4 o'clock)



GYM

OR



JIM

1 1 1



Thelma (in the Cafeteria): "What'll we have for lunch, today?"
Catherine: "Year book, I suppose."

1 1 1

PERSONAL: Li'l amoeba, come home. All is forgiven.

—A. R.

1 1 1

Marie Scheer (studying for the Scripture exam): "Why! Isaias was sawed in two by his son-in-law. Isn't that awful?"
Marie Cregan: "Yeah. He was only half the man he'd been before."

1 1 1

Catherine R. (talking about a family friend): "She was still sick so she went up to St. Paul to rest."
Thelma G.: "That's better than going to St. Peter."

AN OLD MAID'S WAIL

He loves me not, he loves me no,
 He loves me not at all.
 'Tis vain to pluck a daisy so
 For no man heeds my call.

Ah, woe is me! I need a man,
 A man for me alone.
 I cannot think of any plan
 To get men near my home.

Each day I sit here all alone,
 And no one hears my plea.
 I moan. I groan. I groan. I moan.
 Oh, send a man to me!

—A. W. '31



"In the Spring, a young man's fancy—"

1 1 1

IMAGINE YOUR EMBARRASSMENT WHEN—

- You miss the Manchester car after a run.
- You talk unkindly about a girl to her best friend.
- You drop a tray of food in the cafeteria.
- You bump into the Dean when you're late.
- Your Latin teacher asks for a literal translation.
- You pull the Faculty down in the elevator in the Administration Building.
- The prom is mentioned before the wrong ones.
- You are caught playing the grand piano in the auditorium.

1 1 1



The above masterpieces were on display at the East St. Louis Community House. The first seven are studies of Miss Besell through various stages of the mumps. The E. St. Louis art critic designated them as "bum jokes,". No justice!

Per,
 JevT Golley.

Wonder what the mailman thought when he saw the back of this envelope?
 (The mumps were discovered *after* this social science trip.)



INTELLIGENCE EXAM

1. Why did Ivanhoe?
2. Whom did Paul Revere?
3. Why was Paradise Lost?
4. How long was the Tale of Two Cities?
5. Why was the Cricket on the Hearth?
6. Was Hamlet a little ham?
7. Is a bullet a little bull?

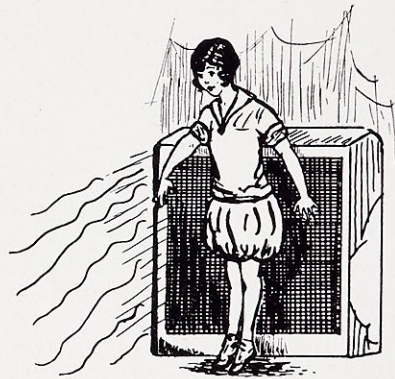
1 1 1

COLLEGE PARADISE

Wake up early every morn,
All your sleepy habits scorn,
Run for street cars, then for class,
Pray to all the Saints you'll pass.
Wait for phone calls, make your date,
Cheerfully remain out late,
Never call to mind the hour.
(In the morning show your power.)
Smile at dances, use a bit
Of that fascinating "It,"
Never rest your dreamy eyes.
THIS IS COLLEGE PARADISE!

—T. P. '31.

1 1 1



A Freshie Warms Up for Gym

DATES



1492



POPULAR IN EDEN

POPULAR
IN
HISTORY

POPULAR AT WEBSTER

1 1 1

A BULL STORY

A. (speaking of shooting archery at the "Wigwam"): "I got so good after a while, I hit the apple on William Tell's head."
T.: "You did?"
A.: "And I hit the bull's eye too."
T.: "And what did the bull do?"

SEEN ON THE BOARD AFTER HISTORY CLASS

Has anyone seen "How the Reformation Started"?
No, we're too young.

1 1 1

The editor has been humming, "Ready for the River," lately. What does this mean?

To the Student Body:

Despite the many demands made in the past upon those firms whose names appear on the following pages, they have once more responded to our request for ads. Your appreciation of their interest should be manifested at every opportunity.

LAURETANUM STAFF '29.

Lauretanum

Design

Build

Finance

WELLSTON MORTGAGE
COMPANY

JOHN A. QUINN

President

EARL G. SMITH

Secretary



CABANY 6180

6307 EASTON AVENUE

One Hundred Thirty-eight



Patrons and Patronesses

THE SENIOR CLASS

MR. AND MRS. F. B. MARSHALL

MRS. CHARLES P. STANLEY

MRS. C. H. GESELL

D. REDMUND AND SON

E. J. COSTIGAN

THOMAS F. IMBS

THOMAS J. FARRIS

F. L. McNALLEY

R. B. NELSON

R. T. MOLLENCOTT

Missouri State Life

Largest Life Insurance Company
West of the Mississippi River

Over \$1,200,000,000.00
of life insurance in force

*Representatives trained to analyze
insurance needs*

EDMUND BURKE, *Manager*

ST. LOUIS BRANCH

1501 Locust St. Central 1700

Missouri State Life
Insurance Company

HILLSMAN TAYLOR, *President*
St. Louis, Missouri



Meeting the circumstances of our customers
has given us one of the largest purchasing
clienteles in the country.

AEOLIAN
Company of Missouri

W. P. CHRISLER, *President*
1004 Olive Street

The Catholic paper supple-
ments the Sunday sermon.

Subscribe for the

Sunday Watchman

52 issues for \$2.50

5c per copy

Compliments of a Friend

Jane's father and grandfather, both
Republicans, had been giving their
unbiased opinion of the Democratic
party.

"Oh, dear," sighed Jane when
bedtime came, "I don't dare to go
upstairs. I'm afraid there might be
a Democrat under the bed." — Ex-
change.

Teacher: "Tell us what you can
about the manners and customs of
the people of India, Mary."

Mary: "They ain't got no man-
ners and they don't wear no cos-
tumes." — Exchange.

Then some people say we don't
need the missions.





We, in unison with other Webster Merchants, are proud of
WEBSTER COLLEGE
and appreciate your patronage

**WE DELIVER EVERYTHING WHEN YOU WANT IT—
AS YOU WANT IT**

Try This Drug Store First

Webster 2671 or 2672

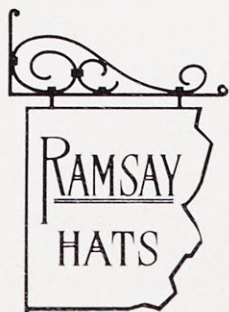
OLD ORCHARD PHARMACY

ALBERT C. LISHEN, Manager

The Store Beautiful

Compliments of the
CAFETERIA OF WEBSTER COLLEGE

In Appreciation of the Fine Spirit Shown by
Our Student Patrons



Smart Hand-Made

HATS

Our Location
at Newstead
Washington
Southeast Corner

JOSEPHINE RAMSEY

Designers
Makers
Importers

Lighting
Fixtures
Exclusively

Frank Voelker Electric Co.

3608-10 North Fourteenth St.

St. Louis, Mo.



Dunn & Campbell
Plastering Co.

57 DeMenil Bldg.

7th and Pine Sts.
St. Louis, Mo.

TRADE
PYRO-SANA



And

Pyro-Sana Tooth Paste

ARE SAFEGUARDS

Prevent and Check

PYORRHEA

What about *your* gums?

BOTH AT ALL GOOD DRUG STORES

Compliments of
BILLIE and DAVID

John Dockery & Son

Real Estate Company

1002 CHESTNUT ST.

LIndell 5618-7628 F. L. HUIE, Mgr.
DAILY DINNER \$1.00—5:00-8:30 P. M.
SUNDAY DINNER \$1.25

Golden Gate Garden, Inc.

St. Louis' Largest and Finest

Chinese and American Restaurant

No Cover Charge

Dancing 6 to 8—10 to 1 Entertainment

3656 WASHINGTON

Jerry (going to his clothes-closet with a suit in his hands): "I seem to have a lot of suits and no hangers."

Sis: "You'd make a good lawyer."

Editor (to humorist): "Are these jokes all original?"

Humorist: "Yes, every one of them."

Editor: "Well, you're older than I thought you were."—Exchange.



ZELLER BROS. CATERING CO.
 4701-3 McPHERSON AVE. ST. LOUIS
 Ice Cream and Fruit Ices of Superior Quality
 Supplies for Parties, Etc.

<p><i>Books on Every Subject</i> Rental Library of New Fiction</p> <p>Doubleday Doran BOOK SHOP</p> <p>Webster Groves Branch 14 N. Gore Ave. 8th and Olive</p>	<p>Compliments of</p> <p>SIEVERS <i>Commercial Photographers</i></p> <hr/> <p>1704 CHESTNUT STREET St. Louis, Mo.</p>
---	---

Central 8787

L. FAVAZZA



Wholesale
Fruits and Produce



1228 N. Seventh Street St. Louis, Mo.

LIndell 8780



4223-4233 W. EASTON AVENUE





Choose Your
Piano As The
Artists Do

For its enduring purity and resonance, for its perfect concord of tone and action, the

Baldwin

is the choice of exacting musicians the world over, on the concert stage and in the home. In any Baldwin you will find a new revelation of your musical dreams.

The Baldwin Piano Co.
1111 Olive Street

Garfield 4662
Garfield 9058

McAnulty - Klein Co.

Materials and Equipment



WAINWRIGHT BUILDING
ST. LOUIS, MO.

CAbany 5019

We Deliver

CAbany 6590

NELSON'S

Ice Cream of Finer Quality . . . Delicious Bakery Goods and Candies
440 DEBALIVIERE AVENUE

CEntral 5450

CASPER STEHLE BEDDING CO.

Manufacturers of

Mattresses, Pillows and Bedding

19th and Morgan Sts.

H. C. Smith, Pres. and Treas.

St. Louis, Mo.

Shoes of the Moment

STAGE SHOES

STREET SHOES

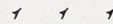
Vanity Boot Shop

805 LOCUST STREET

ST. LOUIS, MO.

First Convict: "When John Bunyan was in prison it took him all his life to write one story."

Second Convict: "That's nothing. It will take me fifteen years to finish one sentence."—Exchange.



Patient: "The size of your bill makes my blood boil."

Doctor: "That will be twenty dollars more for sterilizing your system."—Exchange.





B. T. KEARNS,
President

C. P. SCHAUM,
Vice-President

G. W. BURLY,
Secy. & Treas.

Cascade Wet Wash Laundry Co.

VICTOR AND OHIO

Wet Wash 6c per lb.
Minimum bundle \$1.20

Wet Wash, flat work ironed, 8c per lb.
Minimum bundle \$1.60

VICTOR 4708-09-10

St. Louis, Mo.

LIndell 5766

LIndell 4128

Elliot & Barry Engineering Co.

Heating Engineers and
Contractors



4060 WEST PINE BOULEVARD

ST. LOUIS, MO.

Ruth Costello (reporting on a chapter on "Health" in Education):
"So this man went out into the Adirondacks to die with Nature."

T.: "Misery loves company."

R. C.: "But the fresh air and change did him so much good that he came back cured in a few months."

T. (seto voce): "What happened to Nature?"

THEATRICAL COSTUMERS AND WIGMAKERS

GARFIELD 1402

ST. LOUIS COSTUME CO.

Frank J. Herbers

507 N. BROADWAY

ST. LOUIS, MO.



Preliminary Drawings
for
1929 Lauretanum by
NOEL A. GRADY,
Artist

PLANNING, SKETCHING, AND
FINISHED DRAWINGS
OF ALL TYPES

Finished Art Work in All
Mediums for Various Col-
lege Annuals, Including
Washington and Missouri
Universities.

377 N. TAYLOR DELmar 0684

Krey's

Hams and Bacon

DELICIOUSLY MILD
U. S. GOVERNMENT INSPECTED
TRY IT!



At Your Dealer

PHONE: TYLER 3170

NEW CRYSTAL LAUNDRY CO.

Telephone: LIndell 3386

3936-38 LACLEDE AVENUE

ICE IS FOR SUMMER USE

Keep on Taking Ice

from

Polar Wave Ice &
Fuel Co.

COlfax 6600

COlfax 6611

"Say It With Flowers"

RUSSELL FLOWERS

Flowers for All Occasions

KOSSUTH AND GROVE ST. LOUIS, MO.
(3 Blocks East of Grand)

Compliments of
THE LORETTO FOUNDATION

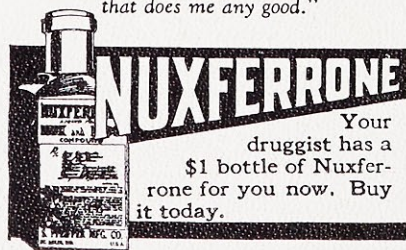
*"A Foundation for the Development of
Finer Catholic Womanhood"*

Nervous strain

Nervous strain is liable to impair your health. Safeguard your strength with Nuxferrone. Rev. P. E. Vaughan of Fellsburg, Kansas, says:



"Please send me a case of Nuxferrone, the wonderful medicine upon which I am depending for life. This is the only medicine I have ever found that does me any good."



Your druggist has a \$1 bottle of Nuxferrone for you now. Buy it today.

Compliments of
THE WEB

MEREMAC DAIRY

Established 1899

PURE NATURAL MILK

From Tuberculin Tested Cows

Phone: Kirkwood 219-W

Compliments of the Sophomore Class

ART IN FOOTWEAR

Fashion's distinctive individualists establish the new vogue with Peacock Hi-Arch narrow heel footwear.

PEACOCK SHOE SHOP

Peacock Shoes - Gordon Hosiery
808 OLIVE STREET--ARCADE BUILDING
Peacock Shoe Shops and Agencies in principal cities

The paper in this book is
DILL & COLLINS
Black and White

The finest stock made
for college annuals.

Distributed by
Acme Paper Company
St. Louis

CHAS. L. GERAGHTY & SON

Funeral Directors

LINDELL BOULEVARD AT BOYLE

One of the Finest Funeral Homes in St. Louis

Phone: JEFFERSON 3608

A fair young girlish Russian
Was loved by a strong-armed Prussian;

From the sofa one night
Came a scream of delight,
The Russian, the Prussian was Crusian.—Exchange.

~ ~ ~

"Oh, dear," sighed Mrs. Alden, as she tossed about in bed, "I'm suffering dreadfully from insomnia."

"Go to sleep and you'll be all right," growled Mr. Alden, as he rolled over and began to snore again.—Exchange.

~ ~ ~

Judge (in assault and battery case): "What weapon did you use to reduce the complainant to this condition?"

Defendant (promptly): "No weapon at all, your honor. It was all hand work."—Exchange.

**MERCHANTS' ASSOCIATION
OF WEBSTER GROVES, MO.**

PATRONIZE HOME MERCHANTS

- | | | |
|--|--|---|
| <p>Geo. C. Benne
Groceries and Meats</p> <p>George Blanner
Electrical Contractor</p> <p>Bopp Bros.
Auto Garage and Auto Service</p> <p>A. Brandenburg
Groceries and Meats</p> <p>W. J. Brennan Grocery Co.
Groceries and Meats</p> <p>E. Brockman
Blacksmith</p> <p>L. Christoffersen
Coal and Building Material</p> <p>Clamp-Prehn Plumbing Co.
Plumbers</p> <p>Cannon Floral Co.
Florist</p> <p>J. P. Evers
Groceries and Meats</p> <p>First National Bank
In Webster Groves</p> <p>Paul Gableman
Plumber</p> <p>Glencoe Lime & Cement Co.
Building Material</p> <p>Gorelock Hardware Co.
Hardware</p> <p>W. H. C. Hackman
Groceries and Meats</p> | <p>Harter Music Shop
Musical Instruments, Etc.</p> <p>John Harttman
Sheet Metal Works</p> <p>Hoffman Paint & Glass Co.
Paints and Glass</p> <p>Holekamp Lumber Co.
Lumber, Etc.</p> <p>P. O. Howe Hardware Co.
Hardware, Paints, Etc.</p> <p>W. F. Hudson
Groceries and Meats</p> <p>D. D. Langsam Dry Goods Store
Dry Goods and Shoes</p> <p>Al Levy
Dry Goods and Shoes</p> <p>W. D. Lindhorst
Groceries and Meats</p> <p>McConnell Mercantile Co.
Groceries and Meats</p> <p>Mue'ler Drug Co.
Druggists</p> <p>Old Orchard Pharmacy
Druggist</p> <p>Old Orchard Sheet Metal Works
Parker Undertaking Co.
Undertakers, Auto Garage and
Auto Service</p> <p>Mac Hardware Co.
Hardware, Paints, Etc.</p> | <p>Reichardt Motor Co.
Chevrolet Cars and Trucks</p> <p>Riesmeyer-Yates Motor Co.
Automobiles</p> <p>Henry Schulz Feed Co.
Feed and Moving</p> <p>Southwestern Bell Telephone Company</p> <p>Fred P. Straub
Hardware and Paints</p> <p>W. A. Straub & Co.
Groceries and Meats</p> <p>Trembley-Wilson R. E. Co.
Real Estate</p> <p>Union Fuel & Ice Co.
Coal and Ice</p> <p>Webster Groves Shoe Store
Shoes</p> <p>Webster Groves Trust Co.
Bankers</p> <p>Webster Ptg. & Stat. Co.
Newspaper and Printing</p> <p>Wiles-Chipman Lumber Co.
Lumber, Etc.</p> <p>N. P. Winters
Electrical Contractor and Fixtures</p> <p>A. M. Wolverson
Groceries and Meats</p> <p>Yeager Bros.
Groceries and Meats</p> |
|--|--|---|

1866 63rd Year 1929

BROWN'S Graduates Get Preferred Positions Because . . . for 63 years this school has built and maintained a reputation for efficiency and high standards.

Day and Evening
Enroll Any Monday

Brief, intensive courses
for College Students.



**Brown's
Business College**

911 LOCUST ST. 5858 DELMAR
3522 HEBERT ST. 2528 S. JEFFERSON

Compliments of
FRESHMAN CLASS

Lauretanum

Again . . .

the Portraits for the

LAURETANUM

Were Made by

SID WHITING STUDIOS

GRAND AT WASHINGTON

Jefferson 8666

OLIVE AT PENDLETON

Jefferson 7294



SID WHITING

BURREL ROGERS

1929

One Hundred Forty-nine

Smith & Davis Mfg. Co.
*Beds and Springs Installed
Throughout Loretto Hall*

WEBSTER COLLEGE

SMITH & DAVIS
MFG. CO.

Established in 1871

ST. LOUIS, MO.

LIFE INSURANCE

JOHN J. KELLY
General Agency

CHEMICAL BUILDING



Phone: TYler 1129

Established 1896

J. F. CORRIGAN

PLUMBING CONTRACTOR

2501 ST. LOUIS AVENUE

ST. LOUIS, MO.

"Here lies the body of Henry Fay,
Who died maintaining his right of
way.
He was right, dead right, as he sped
along.
But he's just as dead as if he'd been
dead wrong."—Exchange.

"Huh! Huh!" said the murderer,
as he sat in his cell looking at his
magazines. "Nothing but continued
stories and I am going to be hanged
next Tuesday."

Telephones

CHestnut 7020

CHestnut 7021

W. Schiller & Co.

Wholesale and Retail Dealers in
PHOTO SUPPLIES

Kodak Finishing and Enlarging

6 South Broadway St. Louis, Mo.

Lauretanum

There Is No Substitute For Marble
UNION MARBLE & TILE COMPANY

Incorporated
WM. C. FOX, *General Manager*
Contractors and Finishers of Interior
Domestic and Foreign Marble

1109 TO 1127 SOUTH SEVENTH BOULEVARD
ST. LOUIS, MISSOURI

All the Marble in Webster College Has Been Furnished By Us



BUSCH
EXTRA DRY
GINGER ALE

A smooth, delicious blend
made by America's foremost
makers of good things to
drink.

Anheuser-Busch

CHARLES F. STUART

Undertaker



FOrest 7000

FOrest 7001

(1929)

One Hundred Fifty-one

Compliments of
Weiler Bros.

*Beauty Now—Permanence
in Later Years Assured for
Your Bectold Bound Book*

As the years pass, the contents
of your annual will become
more and more priceless.

Bound as it is in a Bectold
Cover, this edition with ordi-
nary care will last more than a
lifetime.

The distinction and charm of
genuine craftsmanship possessed
by all Bectold Covers is
well exemplified in this 1929
Lauretanum.

BECKETOLD COVERS

Bectold Company
200-212 PINE STREET
ST. LOUIS, MO.

DElmar 0665

*St. Louis' Most Exclusive
Linen Shop*

Carson Linen Shop
IMPORTERS

Trousseau Orders Given Special Attention
236 N. Euclid Ave. St. Louis, Mo.

"Dit" Did It

QUALITY SERVICE

DITENHAFFER
PRINTING CO.

GArfield 4994 1407 Pine St.

A Divinity Student named Fiddle
Refused to accept his degree.
For, said he, 'tis enough to be Fiddle
Without being Fiddle D. D.
—Exchange.



THE DEPENDABLE
Artist Colors and Materials
FOR

Oil — Tempera — Water Color
Pastel Painting

F. WEBER CO.

705 PINE ST.

ST. LOUIS

Lauretanum

Office Phone, Central 1070

Residence, Forest 7040



HENRY P. HESS

Architect

1001-2 Ambassador Building

St. Louis, Mo.



Architect for Loretto Hall





BYRNES BELTING COMPANY

Manufacturers

Oak Tanned Leather Belting

MECHANICAL RUBBER GOODS

540 Arcade Building

CHestnut 9609

RAMONO

COATS AND DRESSES

812 OLIVE STREET

SAINT LOUIS

*Electric Contractors
Copeland Electric Refrigerators*

N. P. Winters Electric Company

WIRING—FIXTURES—REPAIRS

650 BIG BEND ROAD

Phone: WEBster 1516

Telephone, WEBster 2696

THE BOOK SHELF

CIRCULATING LIBRARY

The Newest and Most Popular Fiction and
Non-Fiction for Rent

740 BIG BEND BLVD. WEBSTER GROVES

WOODS PHARMACY COMPANY

THE REXALL STORE

We Deliver

Phones: WEBster 2733-3481

Big Bend and Old Orchard

For Appointment Phone FOREst 2380

Hazel Sloan Hair Shop

PERMANENT WAVING

Frederics Vita Tonic or Eugene Marcel
Waving and Hair Cutting to Your
Individuality.

5237 DELMAR BLVD. ST. LOUIS, MO.

PARKview 1600-1-2-3

DORR & ZELLER

Weddings, Receptions and Teas
Supplied on Short Notice

DE BALIVIERE AND WATERMAN AVES.
SAINT LOUIS





B. Z. REESE

Pharmacy

2201 BENTON ST.

GArfield 8551

GArfield 9325

See Tom for Tires

NORWALK TIRES

Superior Batteries

BIG BEND AND LOCKWOOD

STEWART TIRE & BATTERY CO.

GILLESPIE & DALY, Inc.

Masons and General Contractors



Jemima, at the zoo, saw a zebra for the first time. "Rastus," she said, "what kind uv animal am dat?" Rastus also gazed in much per-

plexity and awe. He had never seen one before, either. "Why, Jem, dat ere are a sport model jackass!"—Exchange.

BARRY WEST END SHOP

3714 WASHINGTON

"Smart creations in lingerie and foundation garments"



No JOB TOO LARGE

No JOB TOO SMALL

Composition and Makeup for this Issue of the Lauretanum
Furnished by

St. Louis Typesetting Co.

922 PINE STREET
IMPERIAL BUILDING, 3RD FLOOR
CHestnut 9159

LINOTYPE

LUDLOW

THOMPSON



Compliments of
JUNIOR CLASS

PARKER UNDERTAKING CO.

WEBSTER GROVES AND MAPLEWOOD

Phone: WEBster 205

Main Office and Funeral Parlors:
15 W. LOCKWOOD BOULEVARD, WEBSTER GROVES

Maplewood Office: 7356 MARIETTA AVENUE, Phone Hilland 0031

BRENNANS

Good Things to Eat

954 GOODFELLOW AVE.—CAbany 2649

6180 DELMAR BLVD.—CAbany 5800

21 GORE AVE.—WEBster 1600



Contractors For Terrazzo Floors
in New Residence Building

LORETTO HALL

THE TERRAZZO COMPANY, Inc.

1232 ARCADE BLDG.

Real Estate Building & Loan Association

311 N. 11TH STREET

GEO. F. ERNST, *President*

HUGH H. STEWART, *Secretary*

Phone: MAin 3929

MAKE OR RENEW YOUR REAL ESTATE LOAN
WITH US

\$11.50 per month per thousand for 140 months pays principal and interest.
You make large payments at any time—canceling the loan earlier.

JEfferson 0427

L. H. Stehle Mfg. Co.

MATTRESSES, PILLOWS AND
BEDDING

BOX MATTRESSES, IRON BEDS AND SPRINGS

Hospital and Institution
Work a Specialty

Mattresses and Pillows Renovated

3126 EASTON AVE. ST. LOUIS, MO.

Biggs: "Did you hear about that man who died and left everything he had to an orphan asylum?"

Jiggs: "How much did he leave?"

Biggs: "Ten children." — Exchange.

1 1 1

"Rabbi Levi," said Father Burke, "When are you going to become liberal enough to eat ham?"

"At your wedding, Father Burke," said the Rabbi. — Exchange.

Compliments of
Mr. and Mrs.
H. J. Tierney





Large Private Booth for Banquets or
Bride Parties

Fine Orchestra—Dancing Day and Night

NANKING INN, Inc.

*St. Louis' Finest and Largest
Chinese Restaurant*

718-20-24 WASHINGTON AVE.

Open 10:30 A. M. to 2 A. M.

CHestnut 0801

Second Floor

Compliments

of

OLD ORCHARD STATE BANK

Old Orchard & Big Bend Roads
Webster Groves, Mo.

UNEQUALLED SERVICE AT NO EXTRA COST

KRIEGSHAUSER UNDERTAKING CO.

FUNERAL HOMES BEAUTIFUL

4228 S. KINGSHIGHWAY BLVD.
Riverside 6360-6361

4104 MANCHESTER AVE.
GRand 0417-0418

The Baird-Burns Dry Goods Store

106 NORTH LOCKWOOD—FIRST NATIONAL BANK BUILDING

"It pleases us to please you"

WEBSTER GROVES, MO.

Phone: WEBster 3023

Diamonds Watches
Jewelry

Your Credit is Good at

GRADWOHL'S



621 LOCUST ST.

When the Best is Wanted

ASK FOR

DeCoursey's White Rose Butter

Churned from Carefully Selected Cream

DeCoursey Creamery Co.

S. W. HECKEMEYER
MANAGER

Wife: "Have you read Mr. Hoover's acceptance speech? It's splendid."

Hubby: "It may seem so to you, but no acceptance speech can compare to the acceptance speech you made when I proposed."—Exchange.

1 1 1

"You oughta hear Olaf laugh."





In College Circles, at Parties and
Wherever Fashionable Women
Gather "the Shoes You Admire"

are

Vogue Short Vamps

For the Style Student

VOGUE FOOTWEAR

are in a class by themselves

615 LOCUST STREET
ST. LOUIS, MO.



King Plumbing Co.

2925 PARK AVE.



Phone: GRand 8818

Res. Phone: CABany 6879-J

A. Brandenburg

GROCERIES AND MEATS



746 E. BIG BEND BLVD.

Webster 125

EAT

KIRKWOOD ICE CREAM

It's Delicious

\$5.00—No Hat Over—\$5.00

A DIFFERENT HAT

for

EVERY DRESS

Just the Right Style, Shade and Price!

Marie Mac Hat Shop

317 N. TENTH

Central 3659

ST. LOUIS

HETTINGER BROS.

KANSAS CITY
ST. LOUIS TULSA
OKLAHOMA CITY PEORIA, ILL.

Sick Room Supplies - Wheel Chairs

Surgical Equipment - X-ray Supplies

Carbon Arc Sunshine Lamps

H. B. ELECTRO

315 N. 10th STREET

Central 1190



Baldwin - Pope
Marketing Co.

"GROWERS' MARKETING AGENCY"

Fruits and Produce
General Office

825 N. FOURTH ST.

MARQUARD'S

DRY GOODS AND
FURNISHINGS

TWO STORES
2807-2809 N. SARAH
COR. 22ND & BENTON STS.
SAINT LOUIS

Special Furniture Artistic Lamps

Exclusive Wall Papers
THAT ARE DIFFERENT

Interior Painting and Decorating

P. Loire Wall Paper Co.
3748 Washington Blvd., cor. Spring

Mirrors Scenic Panels

When in Need of

*Art Supplies and
Drawing Materials*

Call on Us

Our Stock is Complete and Our Prices
Will Please You

BADER'S

Phones. GARfield 2870-2871
1110 Locust St. . . St. Louis, Mo.

Blackwell-Wielandy
Co.

PRINTERS OF
PERIODICALS

Book Manufacturers

*The "Loretine" is Printed
By Us*

1605 LOCUST STREET
ST. LOUIS, MO.

Smercina's Market

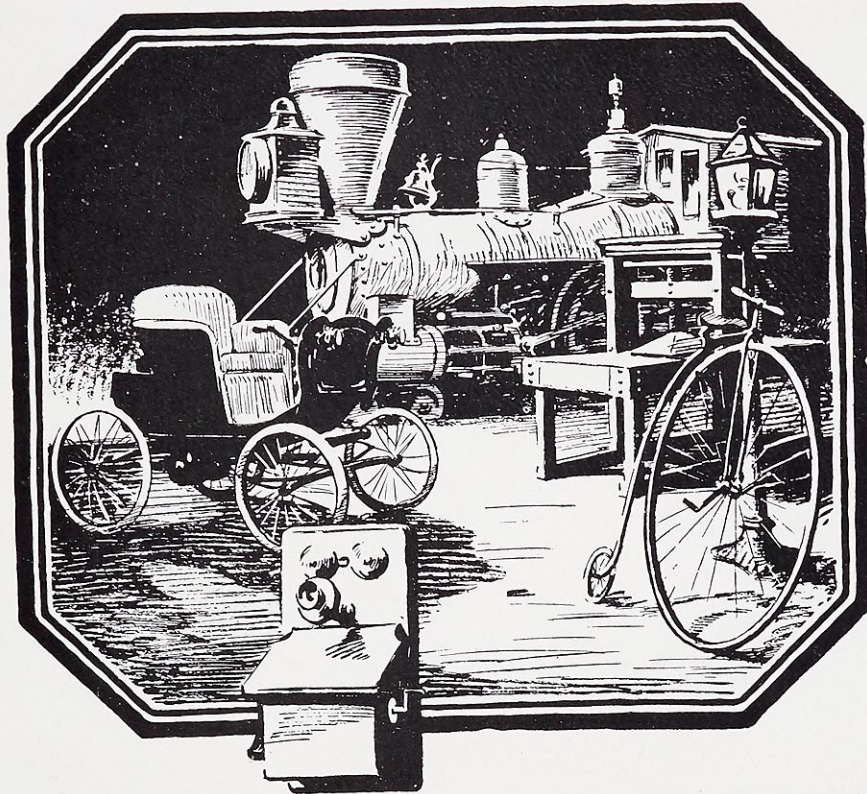
FRANK J. SMERCINA, JR., Prop.

4911 EASTON AVENUE

*Character Analysis through
the Science of Numerology*

HAVE YOUR NAME INTERPRETED
YOUR NAME AND YOUR
NUMBER (Typewritten Chart)—
\$1.00

PENITA MERCER Lock Box 1008



*M*ETHODS and Machines . . . that belonged to grandfather's day still belong there. Yesterday's standards are forgotten in the light of today's discoveries . . . Yesterday's machines have no place in today's competition . . . They belong in the museums or on the scrap heap.

THE LAURETANUM

is a Product of Our Modern Automatic Machinery

KOHLER & CO.

2122 PINE ST.



St. Louis, Mo.

Quality Printers



Bridge Tables : Folding Chairs
Banquet Tables : Desks : Furniture

Rented by

**EDW. A. LANGAN
FURNITURE CO.**

1928 FRANKLIN AVE.
ST. LOUIS, MO.

Call Rental Department
Central 8180

Webster 2376

GEO. SASSIN

LINGERIE AND HOSIERY
MEN'S FURNISHINGS

We Specialize on Men's Suits
\$22.50

122 W. LOCKWOOD AVENUE
WEBSTER GROVES, MO.

Say It With Flowers

CERNY FLORAL COMPANY

122 E. LOCKWOOD AVE.
WEBSTER GROVES, MO.

Phone: Webster 2950

Greenhouse, 430 S. Van Buren Ave.,

TWO STORES:

344 S. KIRKWOOD ROAD
KIRKWOOD, MO.

Phone: Kirkwood 916

Phone: Kirkwood 1642

**Goodhart & Goodhart
Funeral Directors**

Parlors: 2228 St. Louis Ave.
Central 5991 Central 5992

Baden Branch
1022 HORNSBY AVE.
EVergreen 8974

Compliments of
JOE GARAVELLI

DeBaliviere and DeGiverville

Philip A. Rohan Boat, Boiler & Tank Co.

Operating

THE CARONDELET MARINE WAYS
8400 S. LEVEE, ST. LOUIS, MO.

Constructors of Steel Hulls, Marine Boilers, Tanks and Sheet Iron Work
Repairers of Wooden Hulls As Well As Boilers, Tanks, Etc.

Correspondence Solicited

Father Donovan, giving an example in ethics when lecturing on direct and indirect killing: "Suppose, in the old law, one family had a goat and another family stole it. If some-

one were killed in an ensuing fight, what would that be?"

Senior: "Getting the family's goat."



Distinction

*Distinctive ideas in annuals
are a prime factor in a
successful book - of course
service and quality can
not be overlooked ~ ~ ~*

*The sign of the
trade mark means*

Engraving Service Plus
*Close Co-operation between
Staff and Annual Department*

**Central ENGRAVING
COMPANY**
CALUMET BUILDING
ST. LOUIS, MISSOURI
COLLEGE ANNUAL BUILDERS OF AMERICA



