

L
A
U
R
E
T
A
N
U
M

48

Lauretanum

1948

Staff

Editor JOAN MAZZONI

Assistant Editor JO SERAFINI

Associate Editors MARY MARGARET HOFEMAN

JAYNE PAYNE

Make-Up Editor BONNY JOSTEDT

Circulation Manager PEGGY MASON

Business Manager VIRGINIA STACK

Moderator SISTER ROSE MAUREEN

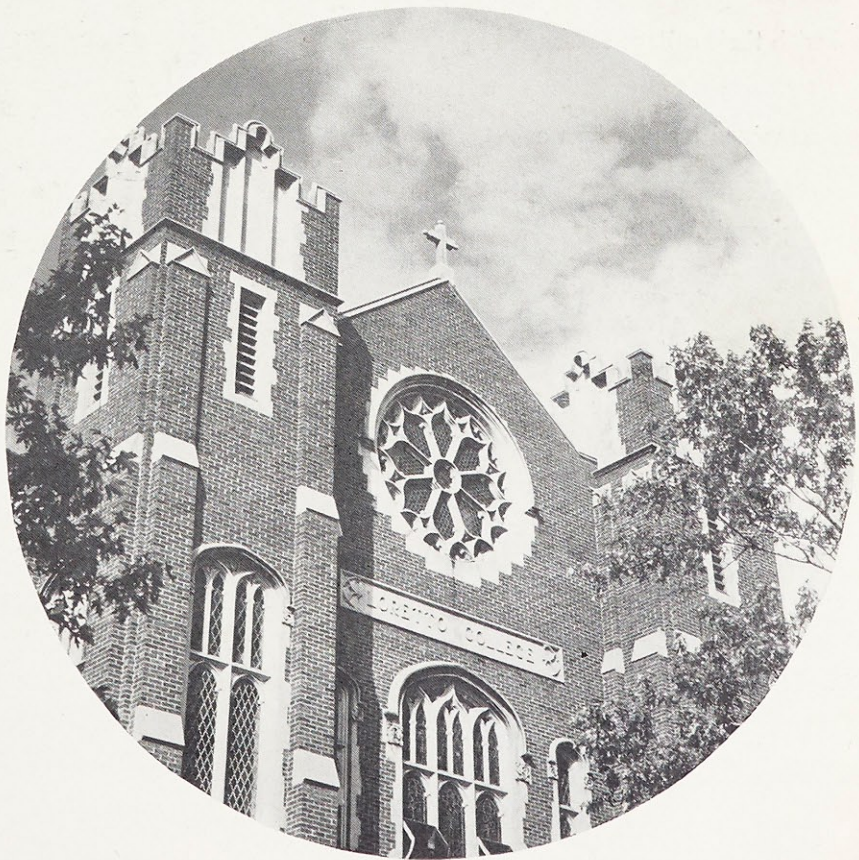


"From out these hallowed portals . . ."

Echoes

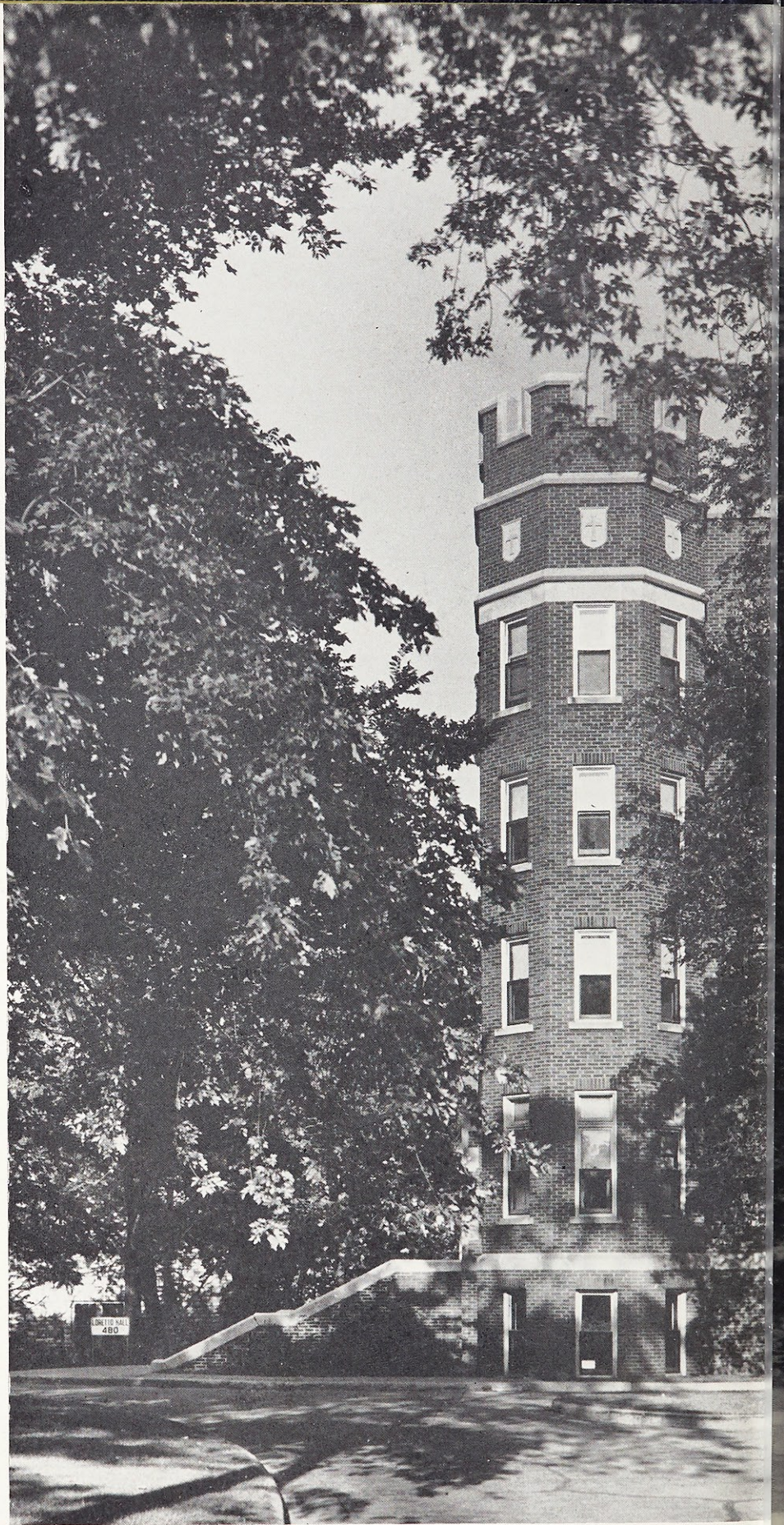
Through Her Halls

Websterites depart, but behind them leave—ever-present echoes of friendship, of laughter, of prayer, of search for knowledge—echoes of memories, of hopes, of dreams, of Webster—echoes that permeate her halls, her spirit, her students.



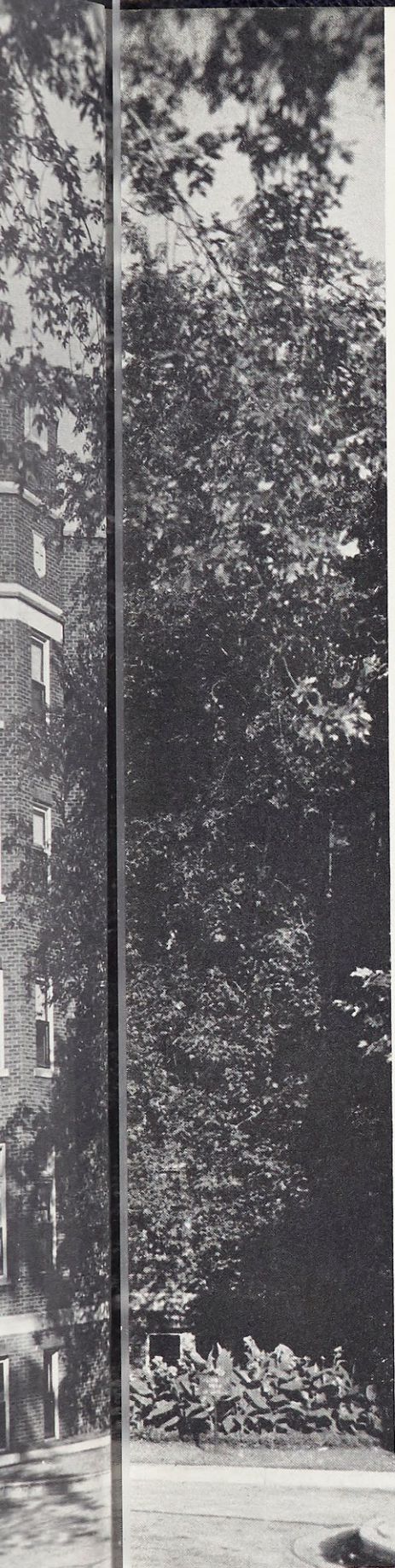
In Memoriam

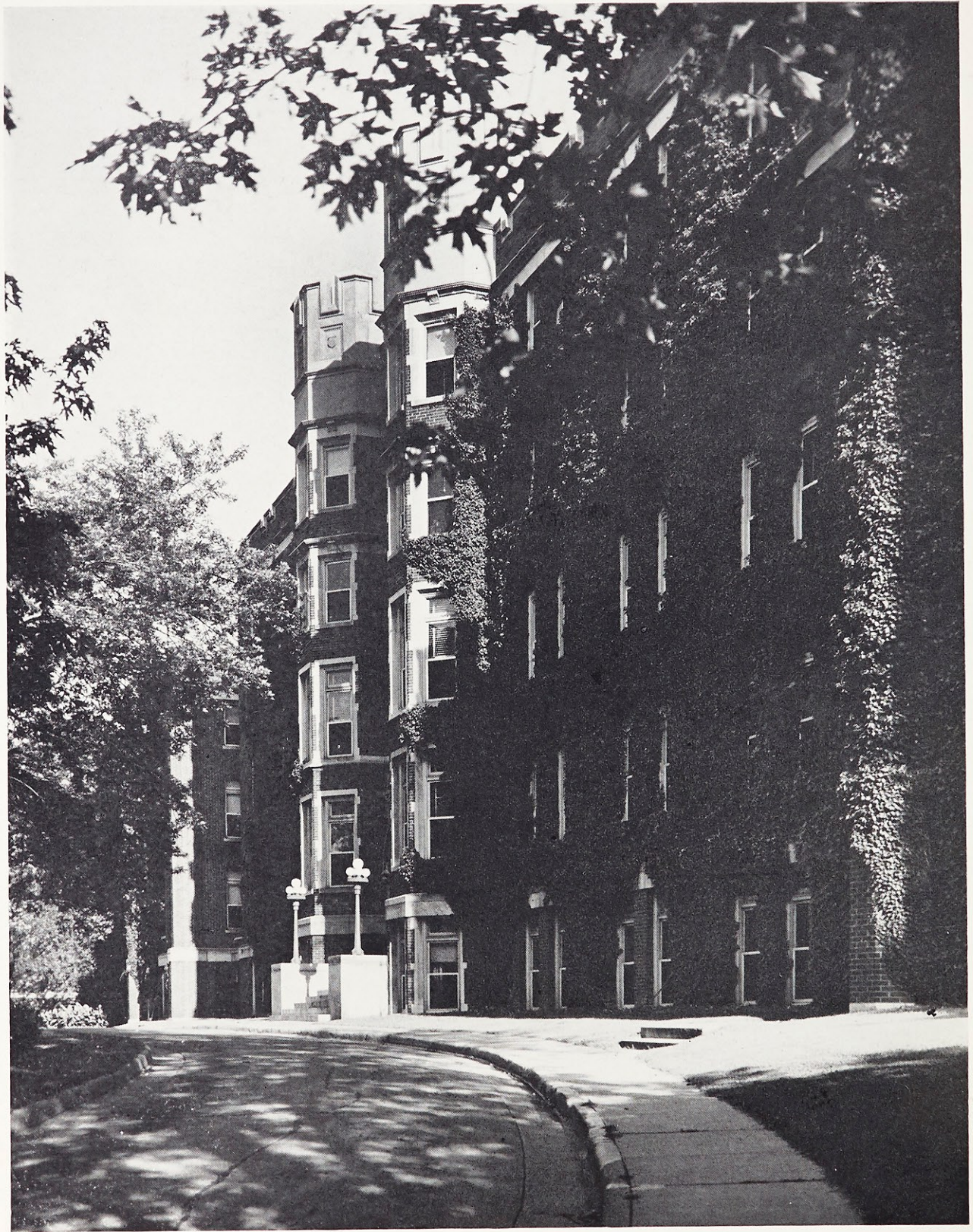
In grateful memory of
Sister Mary Borgia, whose
devotion to her girls did not
end with their college career,
but remained steadfast as a
shining symbol of a loving
heart.



Dedication

To the alumnae of Webster College, whose cherished spirit and traditions still "echo through our halls," we lovingly dedicate the LAURETANUM of nineteen hundred forty-eight in this, their twenty-fifth anniversary year.





"Green ivy clad are her walls . . ."

Our Faculty

George Francis Donovan, A.M., Ph.D.
President

Sister Matthew Marie Grennan, M.S.
Regent

Sister M. Francis de Sales McGarry, A.M., Ph.D.
Dean

Sister M. Francis Jane O'Toole, A.M.
Dean of Women

Sister Alexander Marie Barthel, A.M.
Registrar

Reverend John W. Baker, A.B.

Reverend Ralph F. Bayard, C.M., A.M., S.T.L.

Reverend Thomas V. Cahill, C.M., S.T.D.

Reverend William T. Cortelyou, C.M., A.M., S.T.L.

Reverend George J. Gottwald, A.B.

Reverend Gilmore H. Guyot, C.M., S.T.L., S.S.B.

Reverend Peter G. Sattler, C.Ss.R., A.B.

Reverend Sylvester Schiene, A.B.

Reverend Elmer Toups, C.Ss.R., A.B.

Sister Mary Carmela Ammel, A.B.

Sister Mary Louise Beutner, A.M., Ph.D.

Sister M. Helen Therese Blum, A.M.

Sister Mary Paula Caretto, B.M.

Sister Mary Harriet Condon, M.S.

Sister Mary Felicia Corrigan, A.M., Ph.D.

Sister Mary Edmond Fern, A.M., Ph.D.

Sister M. Helen Clare Fitzsimons, M.S.

Sister Mary Germaine Fogarty, M.S.

Sister Mary Adaline Gemoetz, M.M.

Sister Mary Frederic Glassmeyer, A.M.

Sister Mary Roberta Hardesty, A.M., Ph.D.

Sister Mary Alphonsine Hentzen, B.M.

Sister Mary Joecile Hunleth, M.M.

Sister Mary Bede Koelzer, B.S. in M.

Sister M. Catherine Patrice Laden, M.M.

Sister Mary Gregory Maloney, A.M.

Sister Edwin Mary McBride, A.M.

Sister Mary Dolorine Morrison, A.M., Ph.D.

Sister M. Margaret Alice Norton, B.S.

Sister Mary Placidus Rigdon, A.M.

Sister M. Francis Louise Ritter, B.S.

Sister Rose Maureen Sanders, A.M.

Sister Mary Ambrose Stablein, A.B.

Sister Mary Clotaire Thro, A.B., B.S. of L.S.

Sister M. Rose Vincent Wander, B.S. in M.

Dorothy Andrews, A.M.

Mrs. Joseph R. Barnicle, A.M.

Mrs. Esther Brown, A.M.

Mrs. Leone Cooper, A.B.

Nellie C. Donovan, A.B.

Mrs. Philip DuBois, A.M.

Elizabeth Etnire, A.M.

Mrs. L. E. Hoops

Mrs. Mabel Howell, B.Ed.

Mrs. Anne Jennings, A.M.

Thomas J. Magner, A.M.

Harry R. McClain, LL.B.

Leslie D. McGraw, M.S., D.Sc.

Mrs. Leslie McGraw, A.B.

Gregory A. Millar, A.B.

Agatha Murphy, A.M.

Helen Pech, Ph.B., B.M.

Jean B. Samoel, A.M.

Mrs. Anna McClain Sankey, A.B.

Margaret Speer, M.F.A.

Mrs. Consuelo Wise, A.B.

Seniors

An outstanding class of seniors with an equally outstanding and generous heart. We revelled in the quaintness of their Swiss Christmas. They frolicked their way into our hearts during the Senior Musicale. They gave us memories as bright and shining as the emeralds and pearls they found "under the Christmas tree." Long after they are gone, their happy-go-lucky footsteps will echo through Webster's halls.

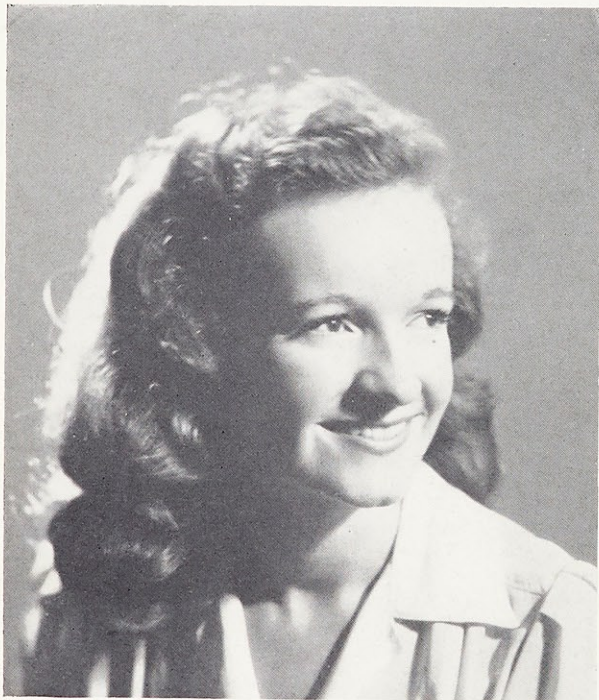




VIRGINIA WILLIAMS, Brentwood, Missouri
A.B. in Sociology



GERALDINE MAGUIRE, Clayton, Missouri
A.B. in French



EILEEN FEENEY, Kansas City, Missouri
A.B. in English

Virginia Anne Williams

Warm and welcome as a sunbeam—highlighting each project with her down to earth geniality . . . endeared to our hearts as unforgettable.

Geraldine Maguire

Proponent of alphabetized politics . . . Gaelic black face . . . balanced our budget and bids . . . twice—“King Ping Pong.”

Eileen Loretto Feeney

Perfect perfect on a Mary-Go-Round of Sodality activities . . . “Erin-ated” laughter, bright as her locks of burnished gold.

GINNY: Sodality, '45-'48; Sodality Board, '48; S. G. Board, '46-'48, Pres., '48; *Who's Who*, '47; NFCCS Delegate, '46; NSA Delegate, '47; Ch'm., Courtesy Week, '47.

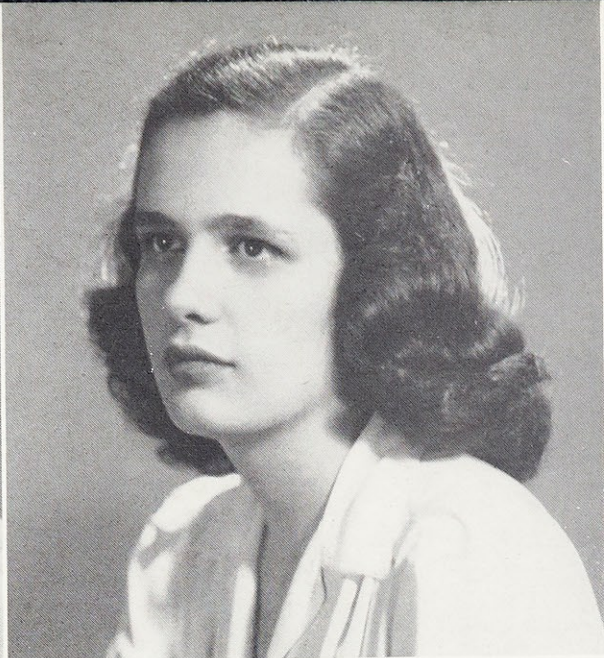
GERRY: Sodality, '45-'48; S. G. Board, '46, '48; St. Louis Reg. Pres. NFCCS, '48; LAURETANUM Associate Editor, '47; *Who's Who*, '48; Ping Pong Winner, '47, 48.

EILEEN: Sodality, '45-'48; Prefect, '48; S. G. Board, '48; *Who's Who*, '47; LAURETANUM Business Mgr., '47; *Web Staff*, '46-'48; I. R. C., '46-'48.





PHYLLIS WELSH, Mattoon, Illinois
A.B. in Sociology



JEANNE SHERIDAN, Knoxville, Tennessee
B.S. in Dietetics

Phyllis Rita Welsh

Dauntless crusader in campus campaigns . . . her loyalty pledged to W. C. . . . inaugurated Mattcon migrations . . . definitely individual is Cissy.

Jeanne Ann Sheridan

Poised potentate of the Court of Love and Beauty . . . southern charmer . . . capable coordinator of the corridors of Loretto Hall.

Dorothy Koziatek

Always a "cheery word" . . . captivating candidate for Harvest Queen . . . photogenic . . . made the fall formal a memorable one.



DOROTHY KOZIATEK, Saint Louis, Missouri
B.S. in Dietetics

CISSY: Sodality, '45-'48; LAURETANUM Assistant Editor, '47; Budget Committee, '47; Athletic Board, '48; Freshman Advisory Committee, '48; *Loretine* staff, '47; Nom. Committee, '47.

JEANNE: Sodality, '45-'48; Sodality Board, '48; Student Gov't Board, '48; Hall Pres., '48; LAURETANUM Circ. Mgr., '47; May Maid, '46; May Queen, '47; Dietetics Club Pres., '48.

DOR: Sodality, '45-'48; Dietetics Club Vice-Pres., '47; Fall Formal Ch'm, '48; Sodality Rep. for Harvest Queen, '48; *Web*, '45; North Section Club Sec., '46.





MARGARET GOFF, Mobile, Alabama
B.S. in Chemistry



TIRZAH EPPERSON, Neosho, Missouri
A.B. in Speech



YOMA DELEO, Cuba, Missouri
A.B. in Sociology

Mary Margaret Goff

Generates an endless supply of energy . . . valuable varsity vet . . . "faculty" for Board-work . . . success inevitable.

Tirzah Madelon Epperson

Holds the stage dramatically and musically . . . poetess as well as a poet's inspiration . . . never tarries in scholastic pursuits.

Yoma DeLeo

Fairy-book past—star-studded future . . . enthusiastic scholar . . . her irrepressible giggle keynotes Rusty's appreciation of life.

PEGGY: Sodality, '45-'48; Student Government Government Board, '48; Athletic Board Treasurer, '46; Varsity, '45-48; *Who's Who*, '48; French Club, '45, '46; Math Club, '46, '47, '48.

TERRY: Sodality, '45-'48; Sodality Board Treasurer, '47; French Club, '45, '46; Poetry Club, '48; Choral Club, '45, '48; Dramatic Club, '48.

YOMA: Sodality, '45-'48; Class Vice-Pres., '48; Choral Club, '46, '47, '48, Pres., '46, '48; LAURETANUM Associate Editor, '47; French Club '45, '46, '47; I.R.C., '48.





MARILYN HAYES, Kankakee, Illinois
B.S. in Music



CAROLYN JOHNSON, Montgomery, Alabama
A.B. in Mathematics

Marilyn Hayes

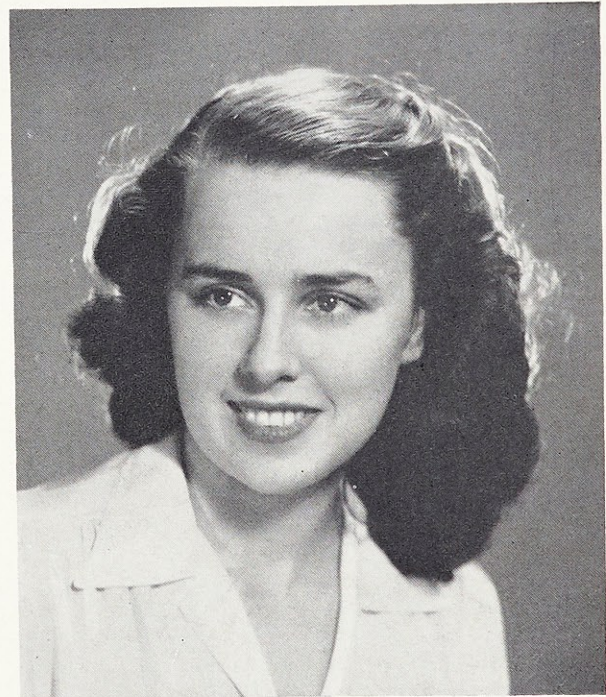
Mite-ily talented music major . . . blond allegro, always on her toes . . . her Webster career—a full “measure” of cooperation.

Carolyn Johnson

Festive coronation and reign over Sodality Union . . . earnest student . . . on her left hand shines a star that fell from Alabama.

Jean Marie Grennan

Sterling quality . . . successfully integrates all from math to minutes . . . lives and loves all things Webster, yet her heart belongs to daddy.



JEAN GRENNAN, Rock Falls, Illinois
A.B. in Mathematics

MARILYN: Sodality, '45-'48; Sodality Board, '48; Musicale Dance Director, '47, '48; I.R.C., '47, '48; Choral Club, '45-'48, Pres., '47; Orchestra, '47-'48; Chairman of Fall Open House, '47.

CAROLYN: Sodality, '45-'48, Sec., '46; Sodality Union Harvest Festival Queen, '47; Chairman, Spring Dance, '47; I.R.C., '46-'48; Pi Mu Epsilon, '47, '48.

JEAN: Sodality, '45-'48; S. G. Board, '48, Sec., '48; LAURETANUM Editor, '47; *Who's Who*, '48; N.S.A., Senior Delegate, '48; Pi Mu Epsilon, '47, '48; I.R.C., '45-'48; *Loretine* Staff, '46, '48.

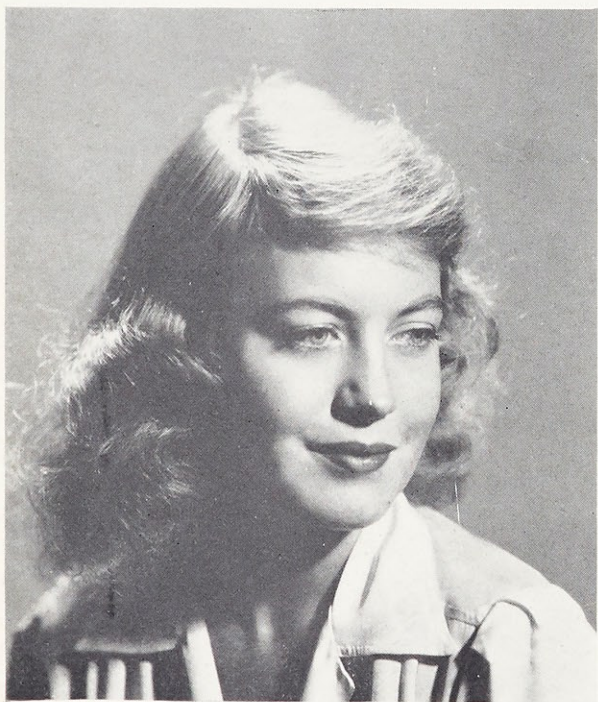




DOROTHY GAINES, Little Rock, Arkansas
B.S. in Chemistry



AGNES ANNE GABRIEL, Springfield, Missouri
B.S. in Dietetics



JEAN FRERKER, Carlyle, Illinois
A.B. in English

Dorothy Sue Gaines

Audible advertisement for Arkansas . . . a sure shot—on the court, in the chem lab, on the campus.

Agnes Ann Gabriel

Lovable madcap . . . strikingly magnetic . . . Gabe's versatility runs the gamut from athletics to an evening at the Zodiak.

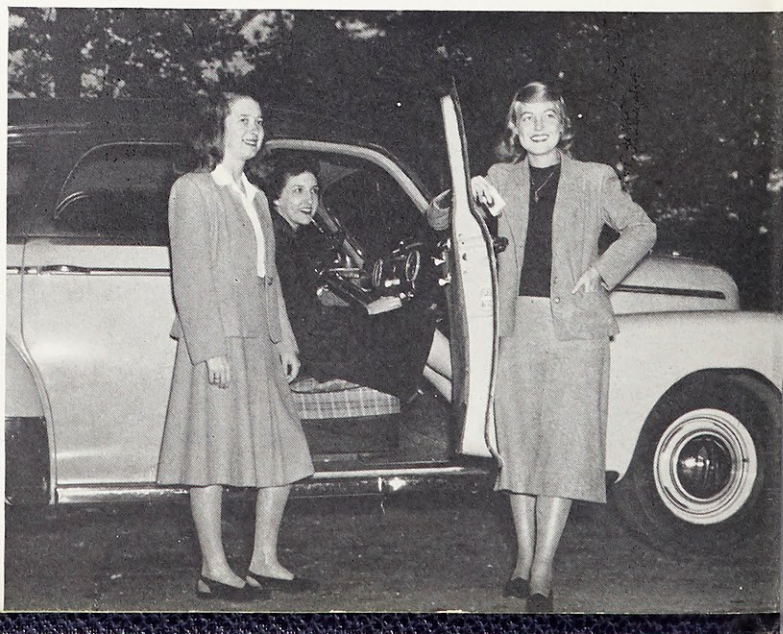
Jean Frerker

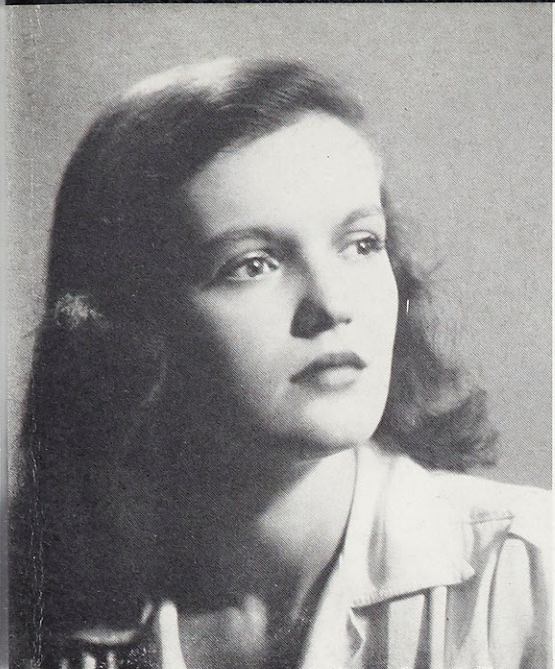
Reminds us of—sun-slanted May mornings . . . filled prom programs . . . sparkling freshness . . . stylized future fashions.

DOT: Sodality, '45-'48; Athletic Ass'n, '45-'48, Sec., '46, Vice-Pres., '47, Pres., '48; Varsity, '45-'48; Chemistry Award, '46; Math. Club, '47-'48; Nominating Committee, '47.

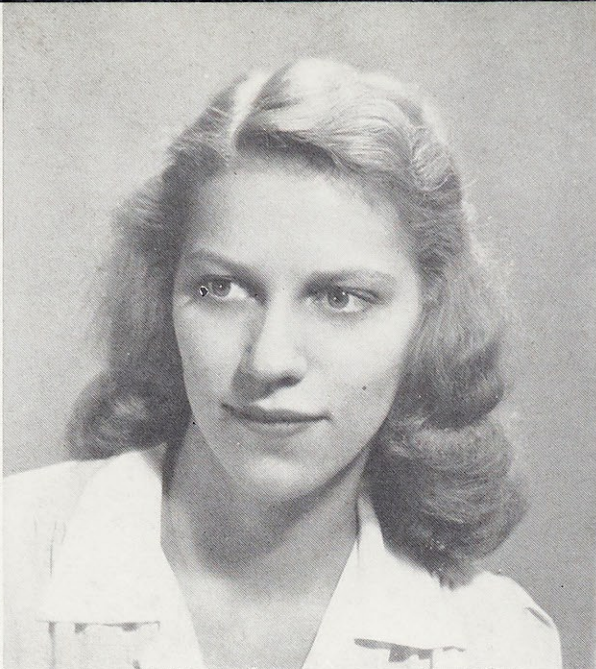
GABE: Sodality, '45-'48; Jr. Rep. to House Committee, '47; Circulation Manager, *Web*, '46; Nominating Committee, '46; Carnival Booth Chairman, '46; Athletic Award Committee, '47.

JEAN: Sodality, '45-'48; *Web* Staff, '47; Cheerleader, '45-'48; May Maid, '46; S.L.U. Jr. Prom Maid, '47.





PATRICIA WILLETT, Bardstown, Kentucky
A.B. in English



JANE CLARK, Lebanon, Kentucky
A.B. in English

Patricia Therese Willett

Beguiling belle from the Blue Grass State . . . southerners' choice for chief executive . . . entrancing as camellias by candlelight.

Mary Jane Clark

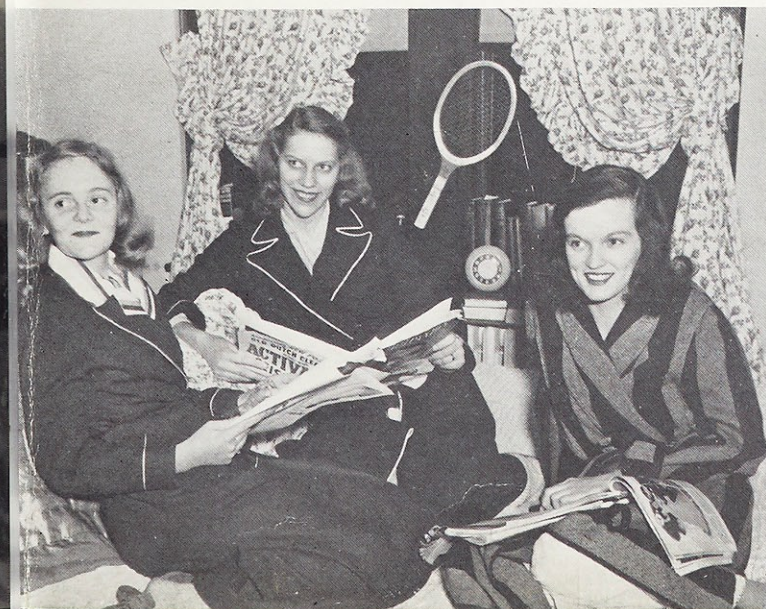
Heart-warming genuineness . . . gave all, even her health shoes, to Missions . . . easygoing nature rivaled only by her southern drawl.

Catherine Ann Bradley

Provides entertainment with her rapid repartee . . . penman for publications, *Etcetera* . . . bantering satirist . . . "Just Our Bill."



CATHERINE BRADLEY, Kansas City, Missouri
A.B. in English



PAT: Nazareth Junior College, '45, '46; Sodality, '47, '48; Southern Section Club President, '48; Classical Club, '47; Athletic Association, '47, '48.

JANE: Sodality, '45-'48; Sodality Board, '47; Mission Pres., '47; Senior Rep. House Committee, '48; Web Staff, '47; Spanish Club, '45, '46; Classical Club, '47.

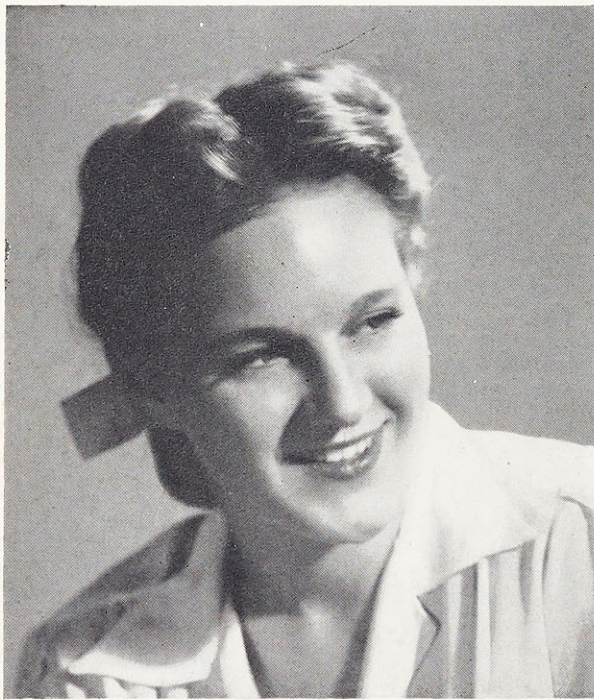
BILL: Sodality, '45-'48; Web Staff, '47; *Loretine* Staff, Assistant Editor, '48; *Etcetera*, Editor, '48.



ANNE MURRAY, St. Louis, Missouri
A.B. in Sociology



JACQUELYN MARKWAY, St. Louis, Missouri
A.B. in English



MARIE WESLEY, St. Louis, Missouri
A.B. in Sociology

Anne Murray

Master of mimicry . . . buoyant . . . delights in devious discussion . . . keeps us gay with her happy hilarity.

Mary Jacquelyn Markway

Cruelty of comprehensives left her unconquered . . . welcome wit, ever present . . . Spelling Bee's Queen . . . teacher of King's English.

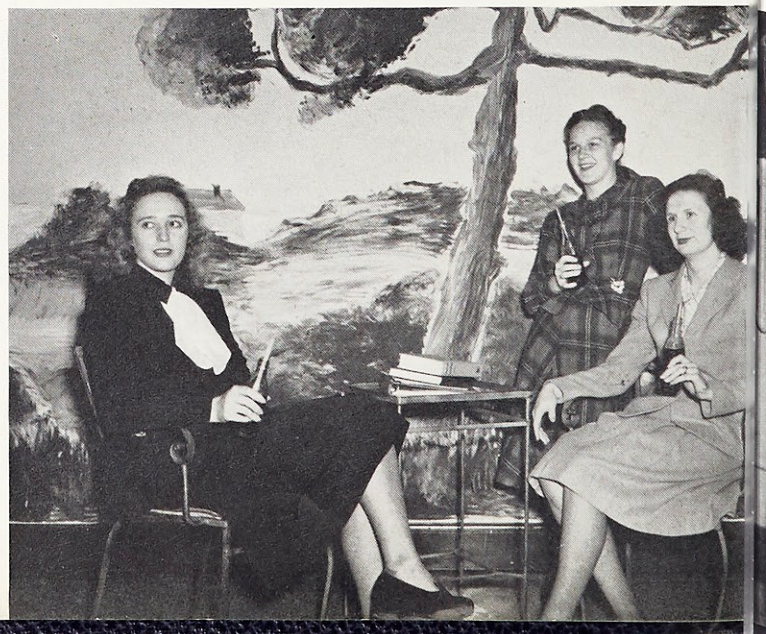
Marie C. Wesley

Master of model man . . . synchronized her time between singing, seniors, and Sweeney . . . Bismarck's Senior Hostess.

ANNE: Sodality, '45-'48; Musicale, '45-'48; Sociology Club, '45, '46; Choral Club, '47; Senior Musicale, '48.

JACKIE: Sodality, '45-'48; *Lorette* Staff Business Mgr., '47; Musicale, '45-'48; Classical Club, '45-'47; Choral Club, '45-'47; Spanish Club, '45, '46.

MARIE: Sodality, '45-'48; Choral Club, '45-'48; Musicale, '45-'48; Class Secretary, '48.





MARY LOUISE KIEL, St. Louis, Missouri
A.B. in English



BARBARA LAUDERDALE, Pasadena, California
A.B. in English

Mary Louise Kiel

Dancing feet, dancing eyes . . . roguish . . . willing worker . . . as easy to know as she is to like.

Barbara Lauderdale

Champions California's cause . . . sew talented! . . . intellectually inquisitive . . . infinite capacity for an extra coke, a hand of bridge.

Elizabeth Ann Walsh

Diminutive denizen of the Ivy Room . . . uniquely unhurried . . . knack for knitting . . . grand slam strategist.

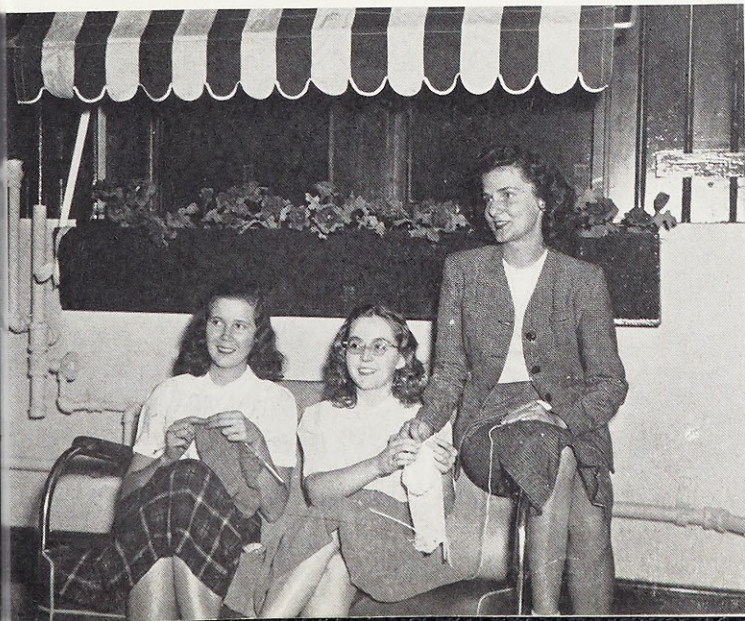


ELIZABETH WALSH, Las Vegas, Nevada
A.B. in Sociology

MARY LOU: Sodality, '45-'48; Sodality Board, '46; *Web Staff*, '45; Choral Club, '45, '46; Spanish Club, '45; Dietetics Club, '46.

BARBARA: Pasadena Junior College; Sodality, '46-'48; I.R.C., '47; Spanish Club, '46-'48; Classical Club, '46-'48; Shakespeare production, '46.

BETTY: Sodality, '46-'48; I.R.C., '47, '48; French Club, '45-'47; Classical Club, '45-'48; Shakespeare, '46, '47.





CATHERINE MURPHY, Peoria, Illinois
A.B. in Sociology



ANN STULL, Salem, Missouri
A.B. in English



CATHERINE MEANS, Kankakee, Illinois
B.S. in Mathematics

Catherine J. Murphy

International information as topical as *Time* . . . "sax-ed" Sugar Blues . . . appreciative audience for humor or "heart-to-heart's."

Ann Stull

Features as delicate as Dresden china . . . principled perseverance . . . correlates college classes with Saint Malachy's Missions.

Catherine Virginia Means

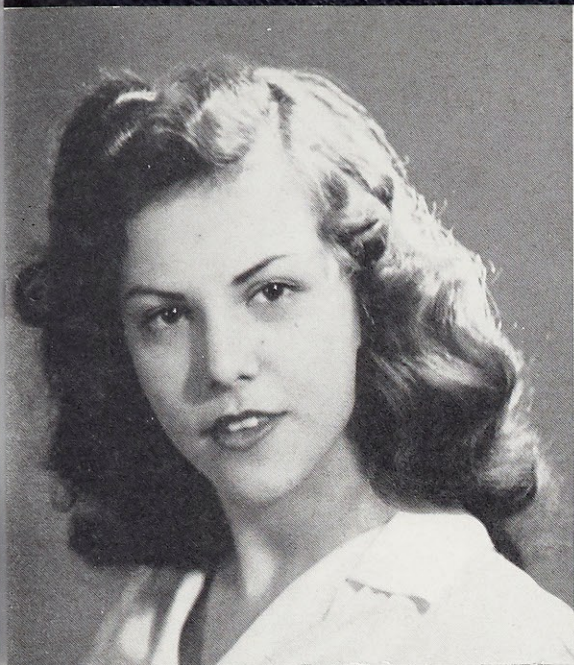
The *Web's* chief worrier about monetary matters . . . a marvel at mastering math . . . her skillful stanzas delight us.

C. J.: Sodality, '45-'48; I. R. C., Sec., '46, '47, Pres., '48; Orchestra, '45-'47; Classical Club, '46-'47; Choral Club, '47-'48; *Web* Staff, '46-'47.

ANN: Sodality, '45, '46, '48; St. Louis U., '47; I. R. C., '46, '48; *Web* Staff, '46; Choral Club, '46-'47; Classical Club, '45; French Club, '45.

CATHERINE: Sodality, '45-'48; *Web* Business Mgr., '48; I. R. C., '47-'48; Math Club, '46-'48; Poetry Club, '46-'48; French Club, '46-'47.





MARY GEBHART, St. Louis, Missouri
A.B. in Spanish



LOUISE VITT, Overland, Missouri
A.B. in English

Mary Pauline Gebhart

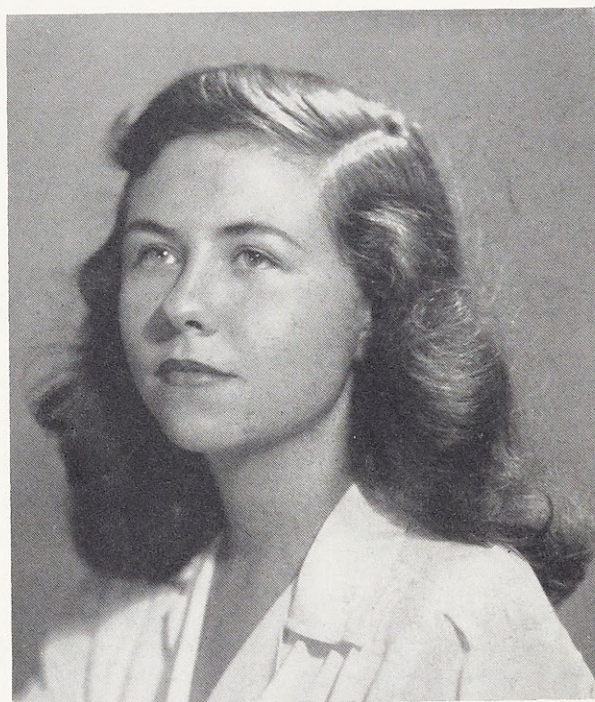
Webster's learned linguist . . . found her most precious stone in a chemistry lab . . . a place in classics.

Louise Vitt

Charming chatterbox . . . possessor of exuberant energy . . . the symphony presents daily Pink Room performances for her.

Mary Jeanne Stuever

Talented with taps . . . skilled scientist who claimed chemistry award . . . blithe . . . her whimsical wit is always welcome.



MARY JEANNE STUEVER, St. Louis, Missouri
B.S. in Chemistry

MARY: Sodality, '45-'48; *Web Staff*, '45; Classical Club, '45-'48; Classical Fraternity S.L.U., '45-'48, V.P., '48; Spanish Club, '45, '46.

LOUISE: Sodality, '45-'48; *Web Staff*, '46, '48; French Club, '45, '46; Classical Club, '47; Science Club, '45; *Musicale*, '45-'48.

MARY JEANNE: Sodality, '45-'48; *Pevely Chem. Award*, '45; *Ch'm T.B. Campaign*, '48; Math Club, '47, '48; Choral Club, '45-'48.





KATHLEEN MULLIGAN, Kirkwood, Missouri
A.B. in English



ANNE WEBB, St. Louis, Missouri
B.S. in Dietetics



LOIS HILLNER, University City, Missouri
B.S. in Dietetics

Kathleen Marie Mulligan

Steadfast Sodalist . . . stimulating as our pep song . . . "ad-ed" to the musicale . . . the inter-collegiate girl.

Anne Louise Webb

Conscientious collaborator . . . Anne behind the man behind the educational tour to all points east . . . engaging effervescence.

Lois Ann Hillner

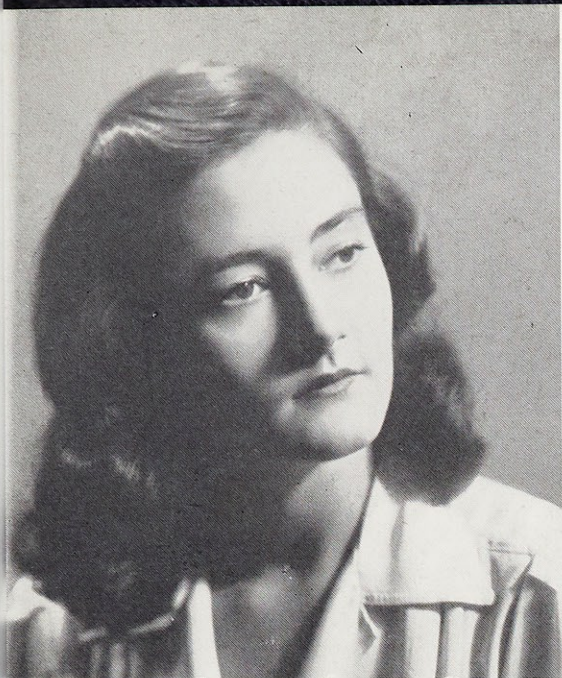
Likeable Lois—a sample of sugar and spice 'n' all things nice . . . amiable smile . . . loquacious lady.

KAY: Sodality, '45-'48; Sodality Board, '47, '48; *Web* Staff, '46, '47, '48; I.R.C., '46, '47, '48; Rules and Regulations Comm., '45; May Maid, '47; Ch'm Musicales Programs, '47; Musicales Ads '48.

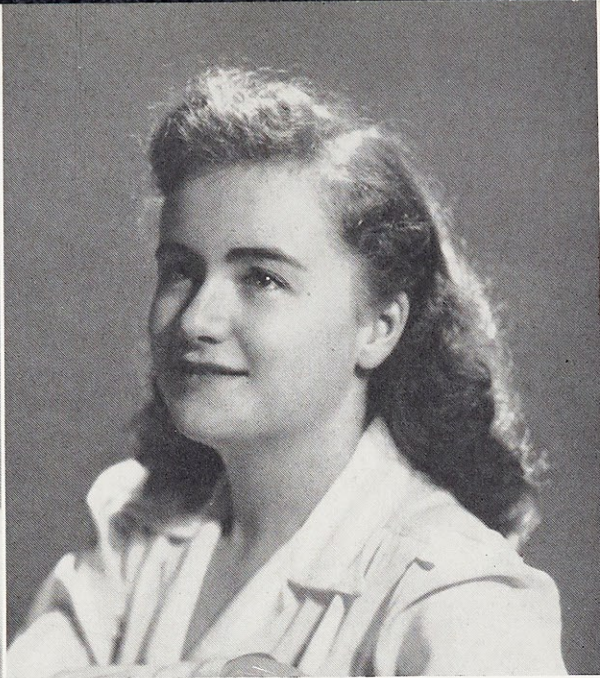
ANNE: Sodality, '45-'48; Sodality Board, '47; Dietetics Club, '46-'48; Educational Tour Ch'm '47; Rules and Regulations Comm., '47; Comm. on Extra-curricular Activities, '48.

LOIS: Sodality, '45-'48; Dietetics Club, '45-'48; *Web* Staff, '45; Dramatic Club, '46, '47.





PATRICIA ABBOTT, St. Louis, Missouri
A.B. in Sociology



ELAINE KRUEGER, St. Louis, Missouri
A.B. in Mathematics

Patricia Abbott

Demure, dainty, darling . . . pleasure giving smile
. . . saucy sailor . . . Geo-Tech's choice as well as ours.

Ruth Elaine Krueger

Chosen by both faculty and students to represent
them . . . jaunty Jules Jumping Gay . . . supervised
Student Directory.

Helen Barbara Gregowicz

Dexterous dietician . . . reconverted from Loretto
lodgings to locker room . . . friendly . . . wishes on a
"Bright Star."

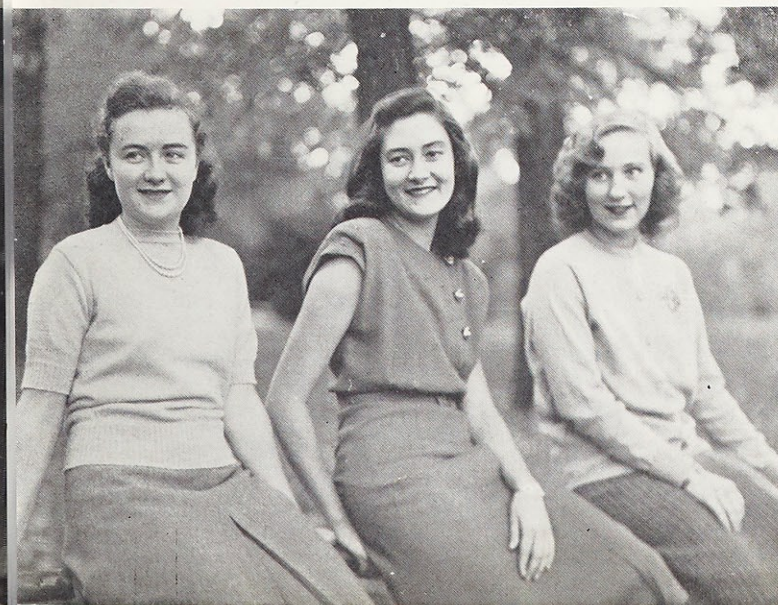


HELEN GREGOWICZ, East St. Louis, Illinois
B.S. in Dietetics

PAT: Sodality, '45-'48; S.L.U. Prom Maid, '47;
Spanish Club, '46; Classical Club, '47; Musi-
cale, '45-'48.

ELAINE: Sodality, '45-'48; S. G. Board, '46-'47;
Ch'm Student Directory, '46, '47; Math Club,
'46-'48, Pres., '47; Pi Mu Epsilon, '48; Budget
Comm., '46.

HELEN: LeClere College, '45; Sodality, '46-'48;
Dietetics Club, '46-'48; I.R.C., '46; Dramatics
Club, '46.

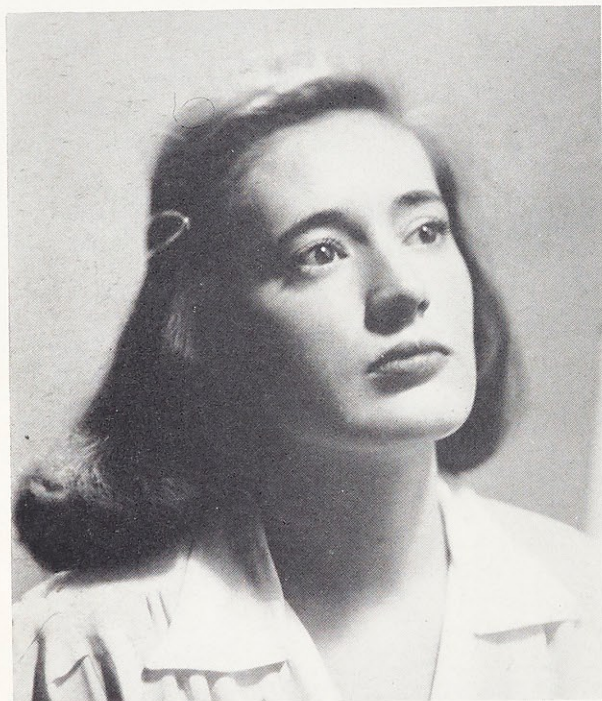




ROSE ANN VIENHAGE, Springfield, Missouri
A.B. in Sociology



THERESE STEGMAIER, Jefferson City, Missouri
A.B. in Sociology



MARY RITA JOLLEY, Kansas City, Missouri
A.B. in Sociology

Rose Ann Vienhage

A literary leader of conscious Catholicism . . . smiling sincerity . . . gifted with generosity . . . sold us on selling subscriptions.

Marie Therese Stegmaier

Out of a bandbox . . . "soc"-ially successful . . . capitol minded . . . as fresh and welcome as a sunrise serenade.

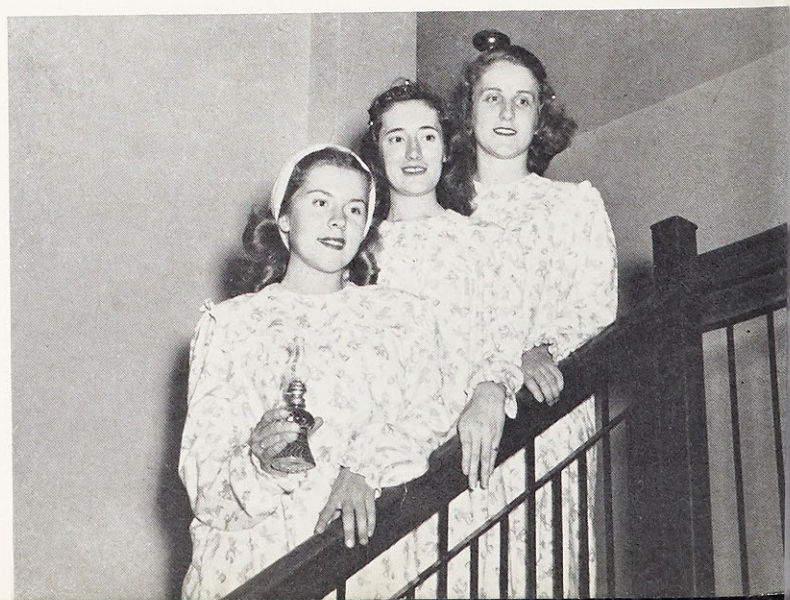
Mary Rita Jolley

Fourth floor keeper of the keys . . . "Jolley" laughter typifies her . . . makes bulletin board a sign post for Sodalists.

ROSE ANN: Sodality, '45-'48; Sodality Board, '48; I.R.C., '47, '48; Chairman Red Cross Drive, '47.

THERESE: Mount Mary College, '45, '46; Sodality, '47, '48; Comm. to Study Student Gov'ts, '47; Orchestra, '47.

MARY RITA: Loretto Heights College, '45; Sodality, '46-'48, Sodality Board, '48; Sociology Club, '46; Ch'm May Day Programs, '47, Dramatic Club, '46.





ANN DINTELMANN, St. Louis, Missouri
A.B. in Sociology



MARY KAY WOMBACHER, Kirkwood, Missouri
A.B. in English

Ann Dintelmann

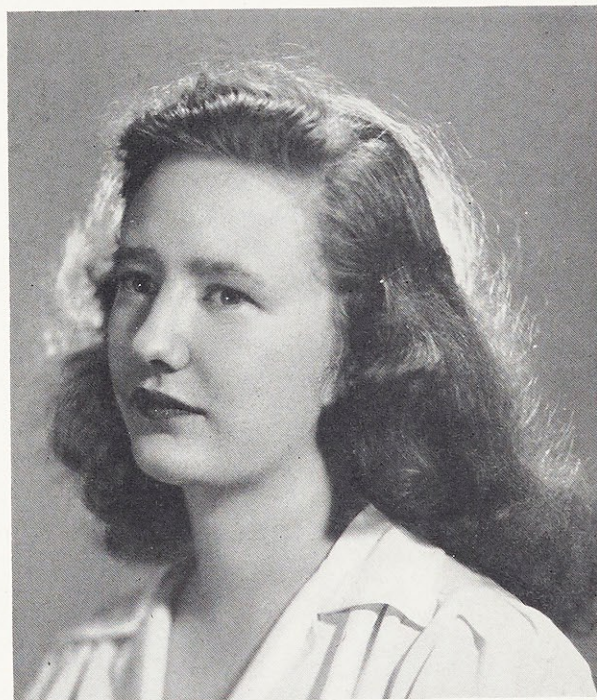
Always associated with the *Web* . . . unassuming manner . . . socially inclined . . . her help means a job well done.

Mary Catherine Wombacher

Typed as tot in Webster's perennial productions . . . coaches Coyle's classes . . . helps the *Web* meet its deadline.

Beatrice Emma Pott

Considerate . . . friendly . . . was "accorded" applause as one of MacNamara's men . . . a "page" in Webster's memory book.



BEATRICE POTT, St. Louis, Missouri
B.S. in Chemistry

ANN: Sodality, '45-'48; *Web* Staff, '46, Associate Ed., '48; Am. Gov't Award, '46; French Club, '45-'48; Classical Club, '46, '47, '48; Committee on Assemblies, '48.

MARY KAY: Sodality, '46, '47, '48; *Web* Staff, Assistant Ed., '48; French Club, '46, '47, '48; Classical Club, '47; Poetry Club, '48.

BEATRICE: Sodality, '45-'48; Chemistry Club, '45, '46; Math Club, '47, '48, Secretary, '48; Musicales, '45, '47, '48.

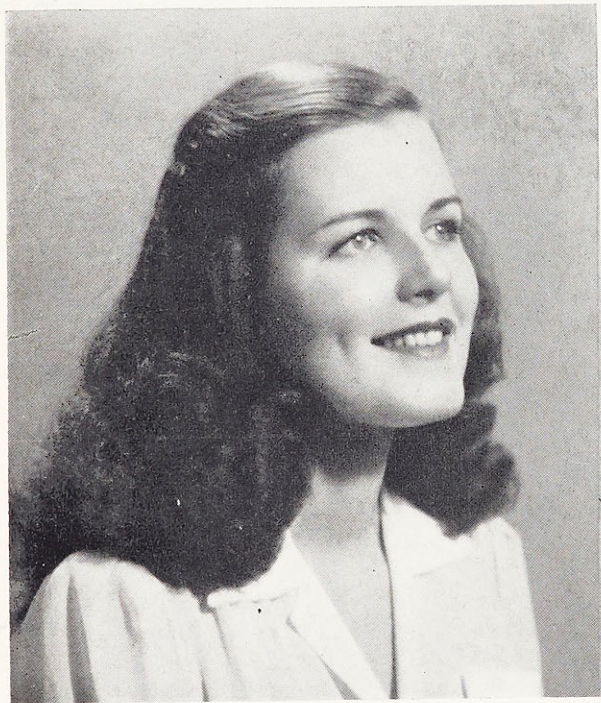




DORIS LAYMAN, Webster Groves, Missouri
B.S. in Dietetics



JUNE REICHENBACHER, St. Louis, Missouri
B.S. in Dietetics



GLORIA HESSER, St. Louis, Missouri
B.S. in Dietetics

Doris May Layman

Tasteful ensembles accented by shining flaxen hair . . . competent chef . . . her energy plus her intelligence insures a bright future.

June Louise Reichenbacher

This mam'selle played "Holiday" for King Rex's delight . . . fun-loving . . . her car crowd votes her chauffeur deluxe.

Gloria Anne Hesser

Hide-and-peek dimples . . . eye-catching cake-walker . . . her ring matched our diamond-dusted Christmas tree.

DORIS: French Club, '46; Dietetics Club, '46-'48; Athletic Association '46-'48; Musicale, '48.

JUNE: Dietetics Club, '45-'48; Athletic Association, '45-'48; Musicale, '48.

GLORIA: Sodality, '45-'48; Dietetics Club, '45-'48; French Club, '45, '46; Athletic Association, '45-'48; Musicale, '48.





MARIAN BOOS, Kirkwood, Missouri
A.B. in Sociology



JANE O'HARA, St. Louis, Missouri
A.B. in English

Marian Boos

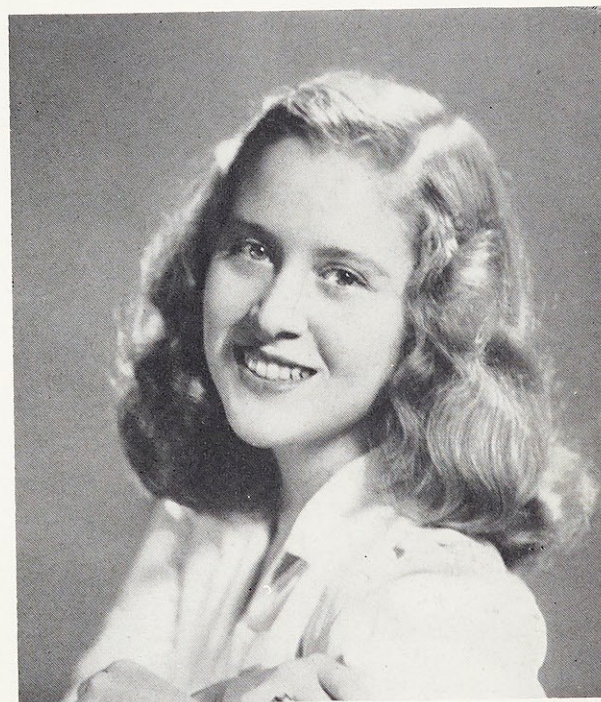
Characterized by cheerfulness . . . lover of library lore . . . relishes red . . . lengthens our pleasure with her short stories.

Jane Helen O'Hara

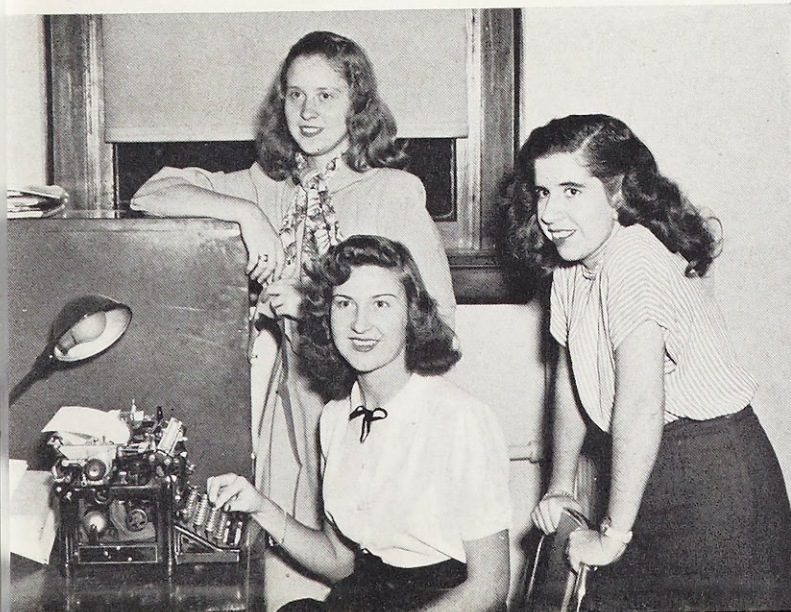
Intensely interested in aesthetics . . . serenity belying her activity . . . made Webster courtesy conscious . . . literary light of the *Loretline*.

Muriel Hoogstraet

Caught on the printed page the "Web" in Webster . . . pens enchanting poetry . . . won our fealty through her zestful enthusiasm.



MURIEL HOOGSTRAET, St. Louis, Missouri
A.B. in English



MARION: Sodality, '45-'48; Chemistry Club, '45; Sociology Club, '46; Choral Club, '48.

JANE: Sodality, '45-'48; *Loretline* Staff, Ass't Ed., '46, Ed. '47; *Web* Staff, '45-'48; Poetry Club, '45, '46; *Mademoiselle* College Board, '47; Nominating Committee, '47.

MURIEL: Sodality, '45-'48; *Web* Editor, '48; "Who's Who," '48; *Loretline* Staff, Associate Ed., '47, Poetry Ed., '46; Poetry Club, Pres., '48; French Scholarship, '46.



LOIS FISHER, Shreveport, Louisiana
Dietetics



NANCY STAED, Kirkwood, Missouri
B.S. in Dietetics



LUCILLE MURPHY, Peoria, Illinois
A.B. in French

Lois Louise Fisher

Reminiscent of crinoline days . . . radiant sovereign of our "Mardi Gras" . . . loveliness as haunting as a melody.

Nancy Elizabeth Staed

"Salute Tomorrow's" cover girl . . . piquant pixie . . . laughter light as quicksilver . . . Webster's nominee for All-American.

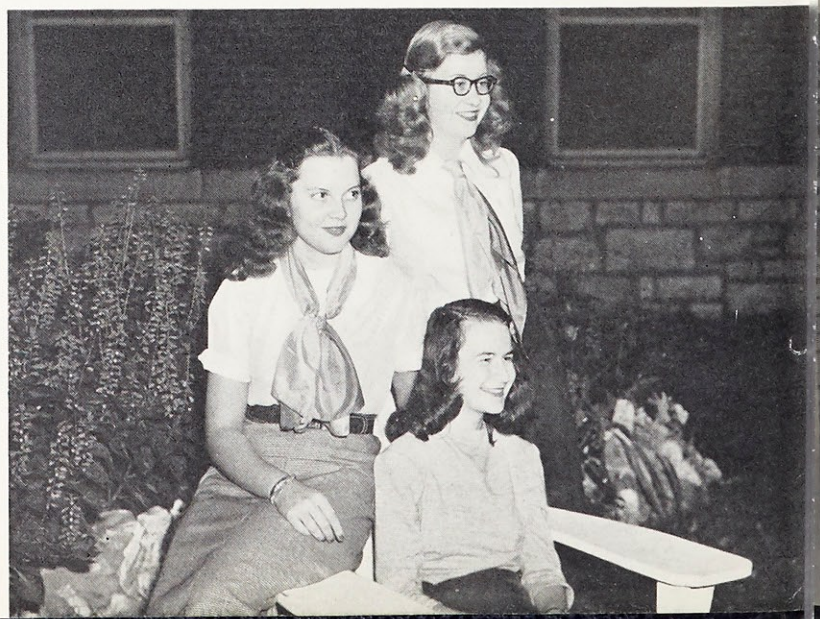
Lucille Murphy

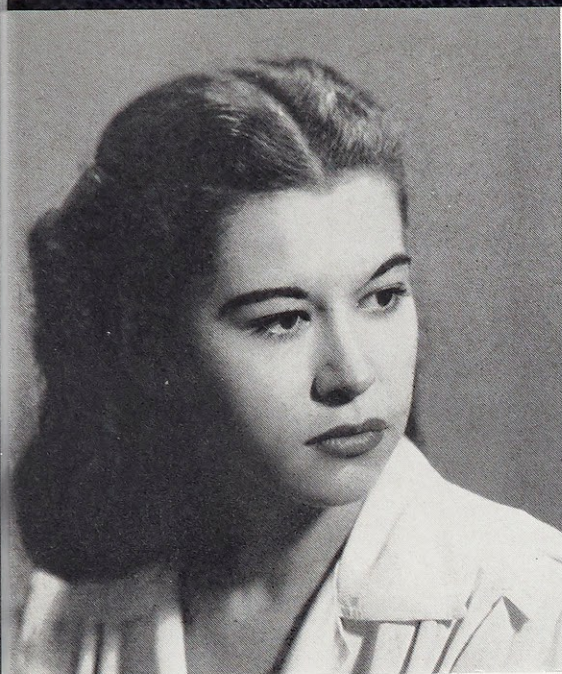
"Classical" Lucy, as modern as a "French" creation . . . stimulating . . . scored a touchdown with the Kick-Off Rally.

LOIS: S. G. Board, '45; Sodality, '45-'48; Dietetics Club, '46-'48; I.R.C., '47, '48; Musicales Queen, '48.

NANCY: Sodality, '45-'48; Web Staff, '48; NFCCS Delegate, '48; Musicales Cover Girl, '47; Dietetics Club, '47-'48; Classical Club, '47.

LUCY: Sodality, '45-'48; Web Staff, '46-'48; Ath. Association Board, '45; Nominating Comm., '46; Classical Club, '45-'48, Pres., '47; I.R.C., '45-'48.





ROSE MARY MISSEL, St. Louis, Missouri
B.S. in Music



DOROTHY SCHULTE, St. Louis, Missouri
B.S. in Music

Rose Mary Missel

Congenial . . . this miss has mastered Spanish as well as the violin . . . black magic flows from her bewitching bow.

Dorothy Mary Schulte

Her own Fan Club for Ogden Nash . . . Dot's wheel of fortune brought her rhythm—rhyme—a ring.

Gloria Manziel

A Texan tonic . . . petite performer of piano . . . impeccable grooming . . . delectably delightful in dungarees or dinner gown.



GLORIA MANZIEL, Tyler, Texas
B.S. in Music



ROSE MARY: Spanish Club, '45, '46, '47; Choral Club, '45, '46; Orchestra, '46-'48; Musicale, '45, '47, '48.

DOT: Sodality, '45-'48; Music History Award, '45; Poetry Club, '46, '47, '48; French Club, '45, '46; I. R. C., '45; Choral Club, '45.

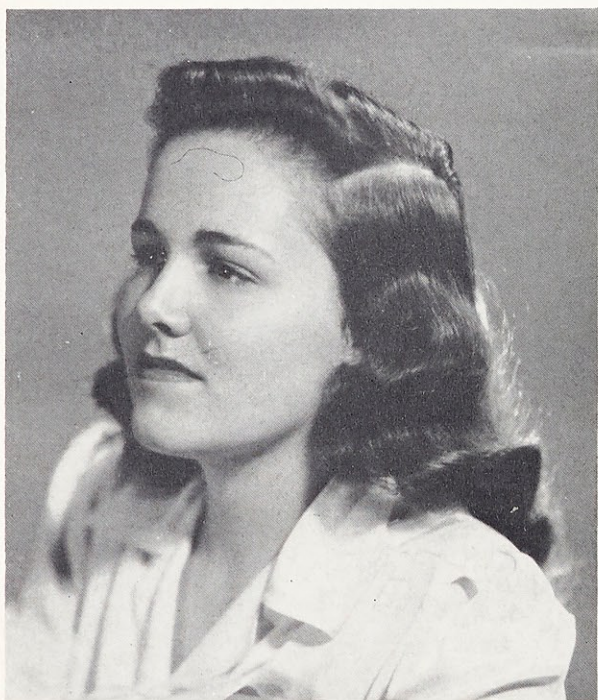
GLORIA: Tyler Junior College, '45; Sodality, '46, '47; French Club, '46; Classical Club, '48; Musicale, '48.



VIRGINIA BRABEC, Fort Dodge, Iowa
A.B. in English



PATRICIA HOLLIGER, Oak Park, Illinois
A.B. in English



MADELYNE MCMAHAN, San Francisco, California
A.B. in Sociology

GINNY: Sodality, '45-'48; Class Treasurer, '48; Spanish Club, '45-'47; Sociology Club, '45; Ch'm of Committee on Extra-Curricular Activities, '48.

PAT: Sodality, '45-'48; Choral Club, '45-'47; Dramatic Club, '45-'48; French Club, '45, '46; Musicales, '48.

PENNY: Sodality, '45-'48; Choral Club, '45-'47; Western Section Club Pres., '47, '48; Spanish Club, '45, '46; Sociology Club, '45, '46.

Virginia Ann Brabec

Sweet simplicity . . . definitely diligent while refreshingly responsive to extra-curricular activities . . . "treasures" each senior function.

Patricia Rosilee Holliger

As Irish as a shamrock . . . a fetching flapper . . . Loretto Hall will miss her liveliness, laughter and loyalty.

Madelyne L. McMahan

Sunny Californian . . . ticket-teller for cultural cultivation . . . a combination of songs and smiles . . . our "Penny" from heaven.





PATRICIA FILSTEAD, Kirkwood, Missouri
A.B. in English



MARY CLARE KIRCHMER, St. Louis, Missouri
A.B. in Sociology

Patricia Grace Filstead

Always that tailor-made look . . . contagious mirth intermingled with constant chatter . . . Texas discovered her executive ability.

Mary Clare Kirchmer

Open house, open heart . . . personality plus . . . from Ivy Room to lecture stand, a staunch supporter of Webster's fame.

Jean Murphy

Wide-eyed appearance as provocative as the pin she wears . . . Grade A absentee . . . majors in nonchalance.

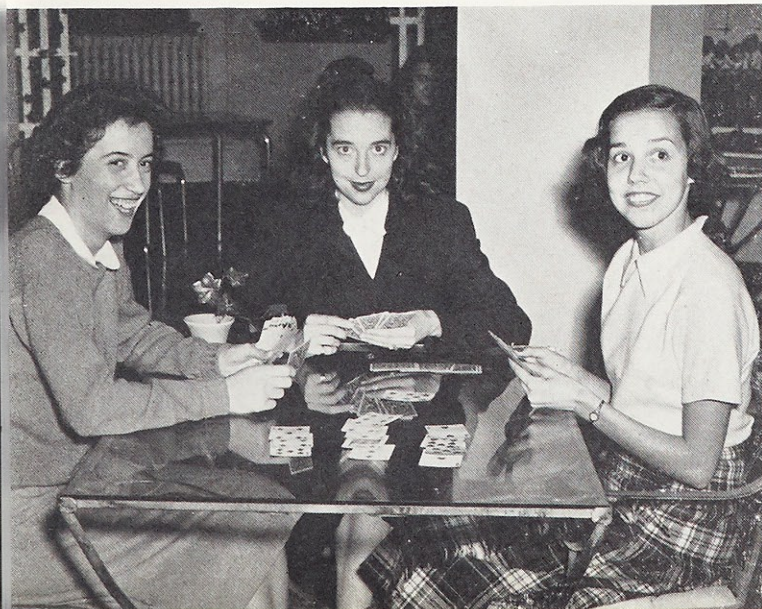


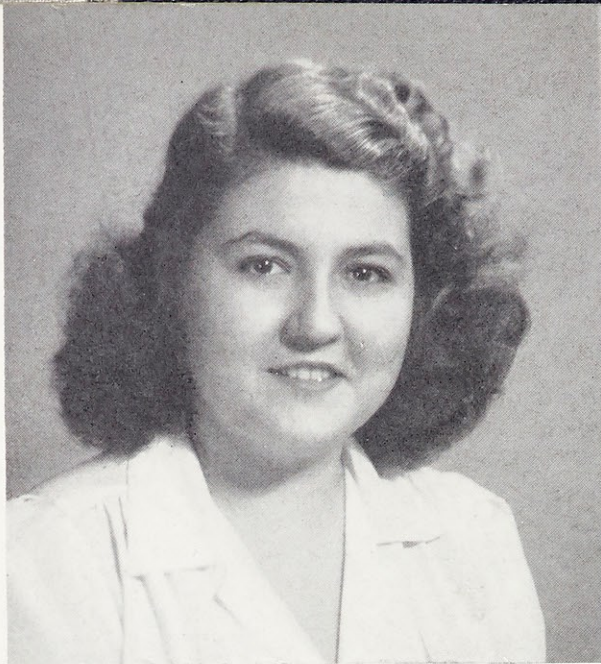
JEAN MURPHY, St. Louis, Missouri
A.B. in Sociology

PAT: Sodality, '45-'48; *Web* Staff, '47, '48; Spanish Club, '45, '46; Classical Club, '47; Choral Club, '45, '46; Dramatic Club, '45.

KIRCH: Sodality, '45-'48; *Web* Staff, '47, '48; *Loretine* Staff, '48; Ivy Room Committee, '48; Classical Club, '47; Spanish Club, '45, '46.

JEAN: Sodality, '45-'48; Sociology Club, '46; Dramatic Club '45, '46; Athletic Association, '45-'48.





MARGARITA GARCIA, Mayaguez, Puerto Rico
Biology



HAYDEE CARRASQUILLO, Guayama, Puerto Rico
B.S. in Biology

Margarita F. Garcia

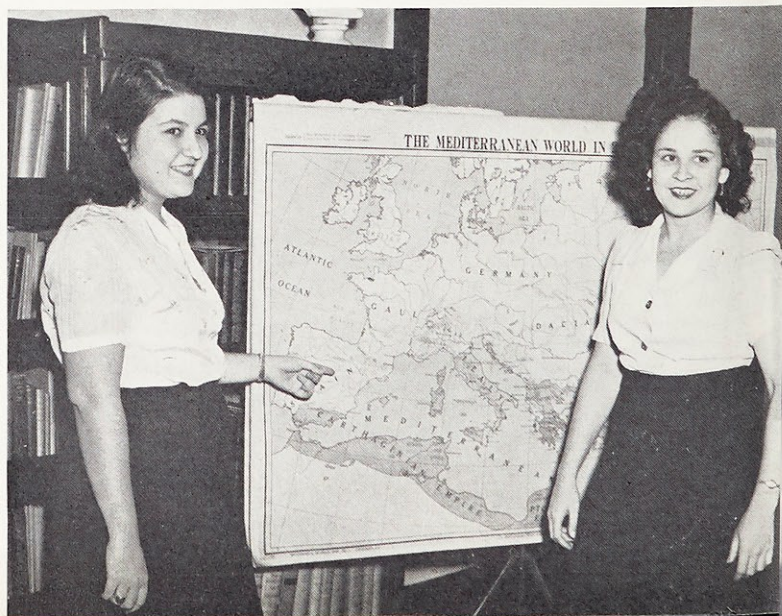
Completely cosmopolitan . . . a mischievous gleam precedes her amusing anecdotes . . . unexcelled expert with crepe and cardboard.

Haydee A. Carrasquillo

Delightful illustration of the Good Neighbor Policy . . . sparkling eyes . . . big sister to Spanish students, friend to all Websterites.

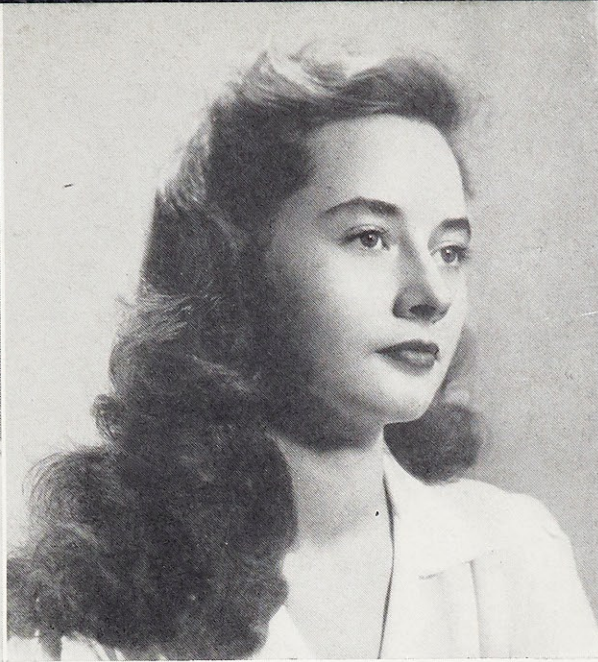
MARGIE: Georgetown Visitation Junior College, '45, '46; Sodality, '47, 48; I. R. C., '48; Spanish Club, '47.

HAYDEE: Sodality, '45-'48; I. R. C., '45-'48; Spanish Club, '45, '48; Math Club, '47; French Club, '45; Science Club, '45.





LORENE PECK, Texarkana, Texas
B.S. in Biology



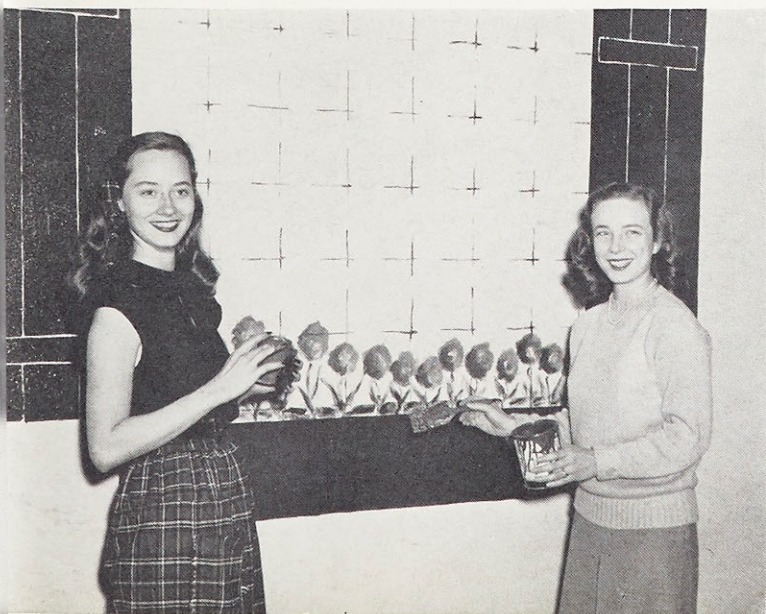
KATHLYN HAMMES, Kankakee, Illinois
A.B. in Art

Lorene Marie Peck

Exquisite exponent of the New Look . . . intriguing eyes that reflect her personality . . . plays Bergen for "Johnny Bear."

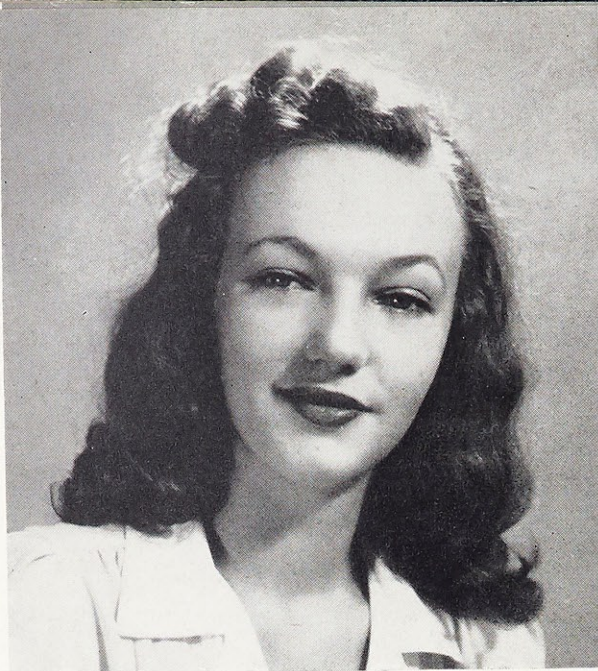
Kathlyn Ann Hammes

Originality coupled with ability . . . generous with her time and talent . . . contemporary cameo . . . always in *Vogue*.

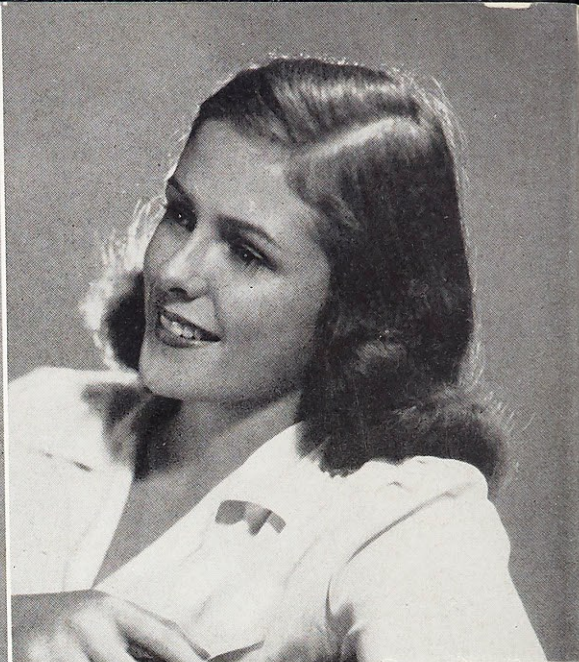


LORENE: Sodality, '45-'48; Choral Club, '45-'47; I. R. C., '45-'48; Rules and Regulations Comm. '47; Mission Rep., '45-'46.

KAX: Sodality, '45-'48; Ivy Room Committee Chairman, '48; May Maid, '47; *Web Staff*, '45-'47; *Loretine Staff*, '45-'47.



BARBARA LUECHTEFELD, Webster Groves, Missouri
A.B. in Speech



VIRGINIA ROSENTHAL, Brentwood, Missouri
A.B. in Speech



JEANNE HIGGINS, Webster Groves, Missouri
A.B. in Speech

Barbara Ann Luechtefeld

"Direct"-ed attention to our little theatre . . . smart sophisticate . . . "Laval"-ier . . . as Christina or Miriam, we loved her.

Virginia Rosenthal

Bell-like voice with musical qualities . . . quietly cooperative . . . classic beauty and brains . . . true theatrical talent.

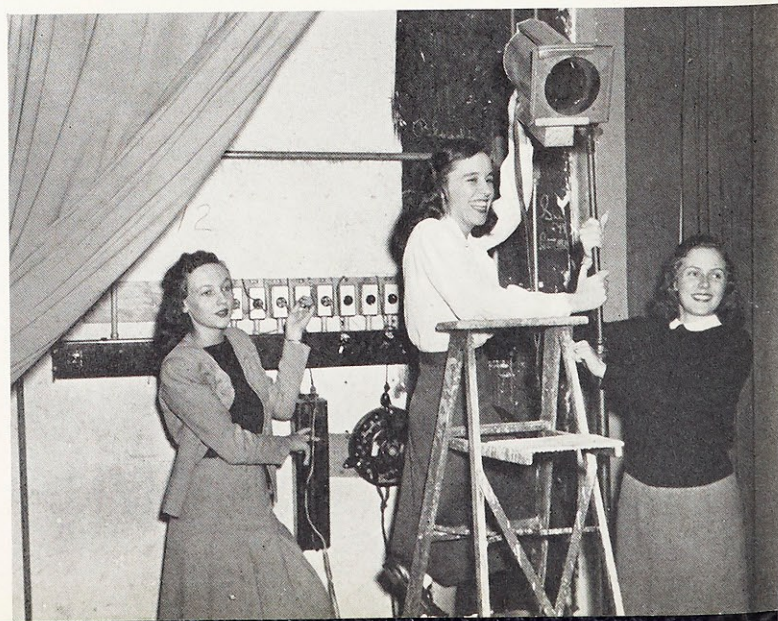
Jeanne Higgins

Electric emcee . . . introduced a Swiss Christmas . . . "projects" her vibrant personality — across the lights, through the halls.

BARBARA: Sodality, '45-'47; I. R. C., '46; Dramatic Club, '45-'48; Ass't Director, "Our Town," '47; Laval University Scholarship, '45; Shakespearian Award, '47.

GINNY: Sodality, '45-'48; Sodality Board, '47, '48; Dramatic Club, '45-'48; Cheer Leader, '45, '46; Shakespearian productions, '45, '46, '48; Loretto Foundation, '46; Spanish Club, '45, '46.

JEANNE: Sodality, '45, '46, '47; S. G. Board, '47; *Who's Who*, '47; Dramatic Club, '45-'48 Pres., '48; Shakespearian productions, '45-'48; Shakespearian Award, '46, '47.



Not Adieu, but au Revoir

Leaving,

Leaving protective walls, hallowed halls,
In God-blazoned armor, with soul-strong sword,
You shall go far.

A lifetime,

Is a long time, yet friendships, God-designed,
Are life-time and for lifetime bind,
And they are yours.

Your star,

God-guided, though afar, twinkles bright,
And strewing success in earth-bound flight,
It shines for you.

A refrain,

In parting need not be sad but rather a glad
Note entering, to make returnings sweeter still.
You shall return.



Coyle, Treasurer; Michenfelder, Vice-President; Daly, Secretary; Saner, President



Freeman, Rogles, Vetruba, Fillo, Hilton

Signaigo, Mason, Mitchell, Reilly, Carroll, Schmiedeskamp



Junior

With an eye to the future, the Junior class pondered over proposed plans, pushed up their sleeves and in utmost secrecy began to transform closed doors into colorful pages of Christmas songs — in the colonnade, a journey through the “Little Town of Bethlehem” led to the scene of the Nativity.



M. Reinheimer, A. Reinheimer, Mahon, Krebs, Andrew, Schatzman



Dunn, Honderup, Parr, S. Meyer, Hughes

Class

J. Nolan, Poat, E. Nolan, Medley, Baumgarten, Emmick

In the Pink Room, Mr. and Mrs. Claus placed fireside reservations weeks in advance for the always-popular performance of "Santa Claus Is Coming to Town" . . . in the Caf, "'Twas the Night Before Christmas" as Donder and Blitzen chose walls to dance upon.





Toole, Moossy, Jefferson, Hoffman, Richter



E. Gonzalez, R. Gonzalez, H. Jablonski, Kopf, Vieten, Kroner

McAvoy, Rozier, Belfiglio, Taylor, Stack, Braeckel



Junior

Severe cases of nostalgia set in as the Ivy Room changed its tune to "I'll Be Home for Christmas." A "White Christmas" set the stage as the seniors received their long-awaited-for pins "under the Christmas Tree" following the festive Christmas Banquet.



Gartland, Thornhill, King, Schwitalla, Ceresia, Balducci,
Brookshire



Unser, J. Mazzone, Waller, Jostedt, Porbeck, Serafini

Class

Schwerdtmann, Shaw, Schmuck, Almstedt, Payne, Schnur

The holidays over, Junior-popped popcorn was sold as a class project, and Junior-fostered plans were charted for the farewell-to-the-Seniors June Banquet.





Thomas, Treasurer; Hellman, Vice President; V. Murphy, President; J. Murphy, Secretary



Kelley, Lakin, Heumann, Smith, Green

Sophomore

With the newness of college gone, Sophomore days dawns bright with anticipation, little sisters looking forward to being big sisters for the first time.

Julius, Cook, Nix, Willoughby, Fillo, Denvir

Holland, Pena, Burke, Field, Kraft, Wissing, Ritter





Reynolds, Higgins, Dunphy, Hahn, McVay, Dufner, Riffel



Fernandez, Bellan, Gleason, Youmans, Robinson, Whelan

Taking the initiative they drew plans for a successful Freshman initiation, where Freshmen showed a definite trend toward that Webster spirit.

Class

Paul, Cooper, Donati, Carroll, Koster, J. Murphy

Meyrose, L. Stuever, Ball, Lagow, Friend, Branch





Welsh, Wieneke, O'Bryan, Moore, Wolfe, Fullenkamp



Dunsford, Jones, Reno, Voss, Hellwig

Sophomore

Favorite recipes were unshelved to make the "Bake Sale" a delicious sell-out, proceeds of which went for the Student War Relief Drive.

Franey, Flanagan, Starbuck, Sweeney, McConnell,
Lindemann, Edgington

Nicely, McCracken, Keefer, Stotz





Mullally, Kehoe, Weinacker, Kunz, Hanley, R. Sloan



Woollard, Henry, Marvin, Colburn, Perry, Richardson

Standing at attention, all hands aboard the Soph desk heaved the mainsail to depict a sailor's trials and tribulations. In such a nautical atmosphere was the faculty entertained.

Class

Herman, Giannateli, Mott, Kellogg, McDaniel

Byrne, Sommer, Cronin, Grace

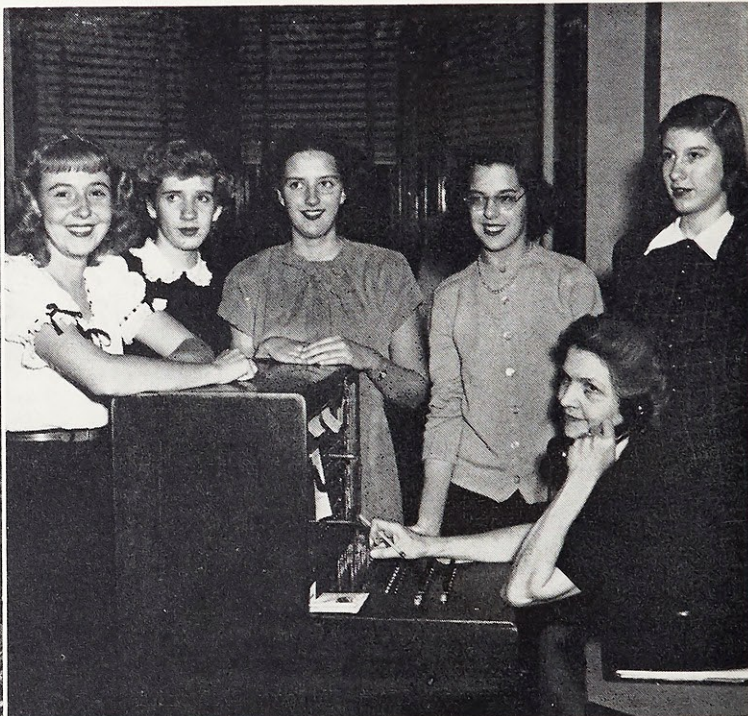


Freshman

A first attempt at higher education, for many the first time away from home, brought mixed emotions to the Webster campus as Freshmen arrived, bag and baggage laden. Gala welcome booth to greet travelers at Union Station . . . outstretched hands at Loretto Hall.

Upper: Nowotny, Donnelly, VanBrunt, Pusateri, Fleck
Lower: Pearson, Malapit, J. Peters, D. Peters

Upper: Nicolson, Venverloh, Keane, O'Gorman,
Bearden, Mrs. Bromme
Lower: Vizzina, Melsheimer, O'Malley, M. Mazzone,
Ashbrook, Willard





Upper: J. Jablonski, Thomson, Schumacher, Grant,
Ruebling, Fresenburg
Lower: P. Thomas, Haxton, Zoellner, Allen

Upper: Guardia, Guerrero
Lower: Dotzler, Crawford, Delin, Gualdoni, Roche

Hardly time to think before they were whisked away into fast-moving Freshman week; "Mike Madness" hilarities, dinner at Van Horn's, campus-centered fashion prevue that was "Out of the Band Box"—and more, Faculty Reception where future teachers were met.

Class

Freshman

With ball and chain and horizontal stripes, they hit the rock pile during Initiation Week to become full-fledged Freshies—Little Sister fledglings to be taken under Big Sisters' wings.

Upper: Miss Lindemann, Skees, Knille, Campanella, Westemeier, E. Thomas, Gits
Lower: Bradford, Foy, Tolon, Lee, Uranga.

Upper: McKay, Scally, C. Mueller, McTigue, Kavanaugh, Riley
Lower: Mitchell, Benanti, Nelson, Bornhurst, P. Thomas, Fields





Upper: Mattingly, Thoman, Schwartzel, Stevinson,
R. A. Sloan
Lower: Franzman, Wieck, Halloran, D. Mann,
Connors, D. Mann

Upper: Bachicha, Causo, Ramirez, L. Cardenas
Lower: Bader, Monnig, Vogelgesang, G. Mazzoni
Ahearn, Vasquez

Their prime project was a "howling" success complete with broomstick angel . . . in short, the spook-iest Halloween Party witnessed in goblin-ages.

Class

Freshman

Held over by popular demand, the Freshman Auction captured the highest bidder. True potential leadership came to the fore, as Student Government offices were taken over during Freshman week.

Upper: Boone, Casey, Evans, Helgason, McGinn, Mathis
Lower: Kilker, Knight, Bromme, Porter, Aubrey

Upper: Ewing, Jackson, Jones, Edelman, Hohn, Roche
Lower: Elsey, Wheeler, Compton, Brunelle, Jostrand





Upper: Rittmanic, Buckler, Hudson, Yates, Romey,
Massery
Lower: Manion, Mulligan, Doyle, Schaeffer, Catanzaro,
Willoughby, Walsh

Upper: Lindhorst, Harris, Gioia, Grassmuck, Cahill
Lower: Jeffirs, Arnold, Whalen, Wright, M. A. Watson,
L. Watson

Last but not least . . . a surprise in store as a celestial orchestra set the mood for St. Pat's visitation at the Big Sister-Little Sister party. Thus, were Freshmen launched into a career at Webster.

Class

Activities

Enthusiastic student reaction to another year at Webster displayed a maze of individual interests, as clubs were joined, dues paid. Fund-raising drives for War Student Relief resulted in novel class projects. Our lovely Lady of the Magnificat smiled blessings upon us as we sailed down the Mississippi to New Orleans, singing "Come to the Mardi Gras!" One of the largest casts ever was aboard ship. Concerts by famed and welcome guests, and memorable student recitals were interspersed among classes . . . a complete category for a well-rounded student life.





Eileen Feeney, Prefect

Our Lady's

"Loyal bands, joining hands" to—
"brief" themselves with a day of recol-
lection . . . back Dot and the Harvest
Festival . . . receive new sodalists . . .
adore together on First Friday . . . pray
and think alone during retreat . . . collect
clothing for the war-weary . . . to crown
Our Lady as our mother and our queen.

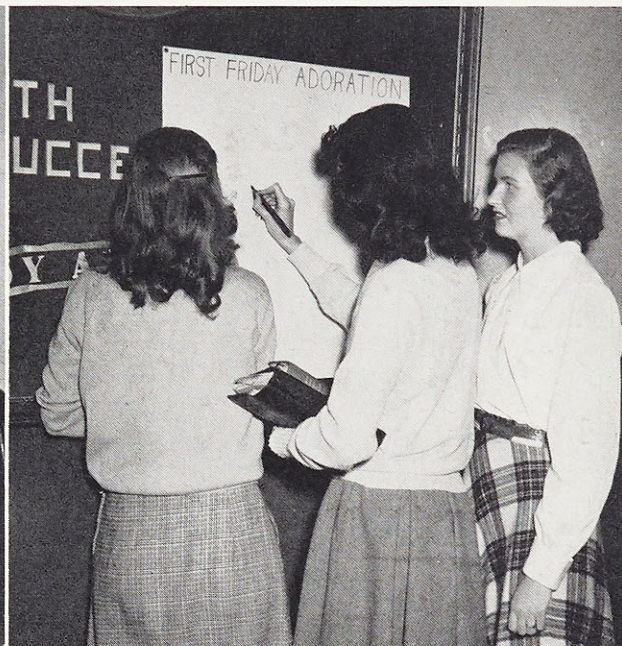


Feeney, Schmuck, Vienhage, Schnur, Jolley, K. Mulligan, Jostedt, Mason, Hayes,
Williams, Stack, Voss, Daly, Ritter

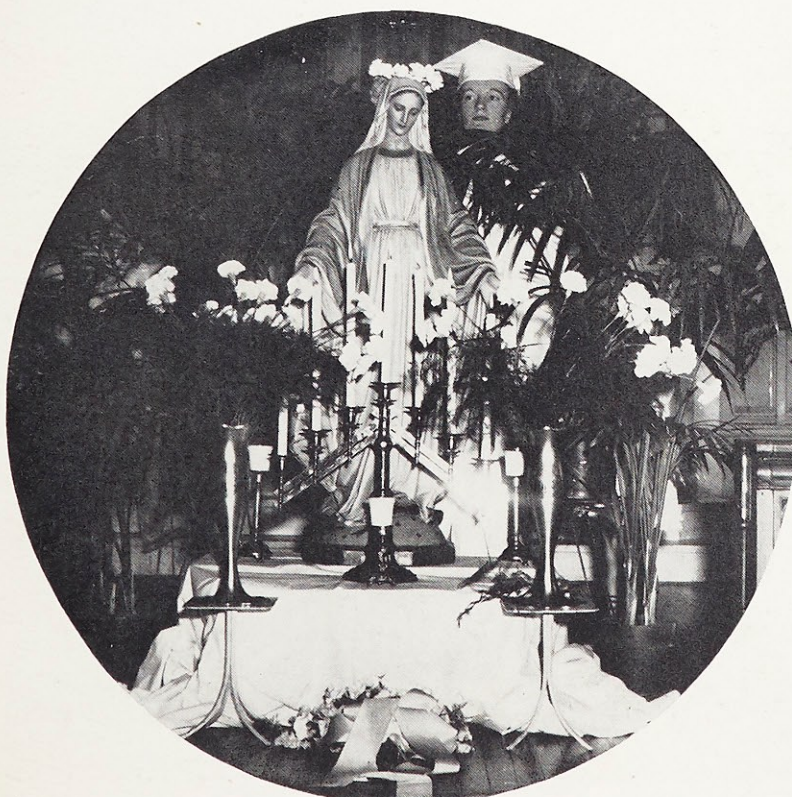
Sodality



K. Mulligan, Murray, Voss, Hellwig



Burke, Kraft, Yates



Sodality May Day

<i>Prefect</i>	EILEEN FEENEY
<i>Vice-Prefect</i>	ROSEMARY SCHMUCK
<i>Secretary</i>	JOYCE VOSS
<i>Treasurer</i>	BONNY JOSTEDT
<i>Senior Representative</i>	
	ROSE ANN VIENHAGE
<i>Junior Representative</i>	DORIS SCHNUR
<i>Sophomore Representative</i>	JOANN RITTER
<i>Freshman Representative</i>	
	MARJORIE BRADFORD
<i>Sodality Union Representative</i>	
	VIRGINIA STACK

COMMITTEE CHAIRMEN

<i>Mission</i>	PEGGY MASON
<i>Apostolic</i>	MARILYN HAYES
<i>Eucharistic</i>	KATE DALY
<i>Literature</i>	ROSE ANN VIENHAGE
<i>Our Lady's</i>	VIRGINIA ROSENTHAL
<i>Publicity I</i>	MARY RITA JOLLEY
<i>Publicity II</i>	KAY MULLIGAN



Virginia Williams, President

The Student Government Association is the fulfillment of a pledge to the school, to the faculty, to the students. It is a pledge of loyalty to Webster and of just administration in student activities. The Association is a trial field for Catholic student leadership; it is the clearing house for Student rights and responsibilities. Its rule safeguards the well-being of all, yet stimulates the expansion of individual initiative, courage and friendship. It will ever remain the core of Webster spirit.

Student Government



Association Meeting

Presid
Vice-P
Secret
Treasu
Senior
Senior
Junior
Junior
Sopho
Sopho
Fresh
Fresh
Sodal
Hall P



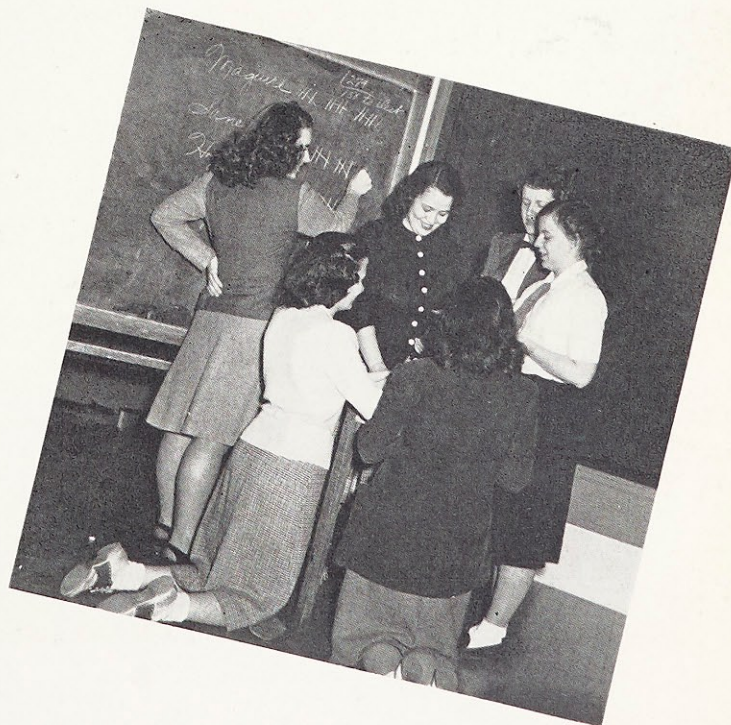
Taylor, Stack, D. Welsh, Hoffman, Sheridan, Whalen, V. Murphy, Williams, Feeney,
Wieck, Saner, Grennan, Maguire, Goff

Association

STUDENT GOVERNMENT BOARD

<i>President</i>	VIRGINIA WILLIAMS
<i>Vice-President</i>	ROSE MARIE SANER
<i>Secretary</i>	JEAN GRENNAN
<i>Treasurer</i>	MARY MARGARET HOFFMAN
<i>Senior Class President</i>	JERRY MAGUIRE
<i>Senior Class Representative</i>	PEGGY GOFF
<i>Junior Class President</i>	ROSE MARIE SANER
<i>Junior Class Representative</i>	BETTY LOU TAYLOR VIRGINIA STACK
<i>Sophomore Class President</i>	VRON MURPHY
<i>Sophomore Class Representative</i>	DOT WELSH
<i>Freshman Class President</i>	JOAN WHALEN
<i>Freshman Class Representative</i>	MARY JANE WIECK
<i>Sodality Prefect</i>	EILEEN FEENEY
<i>Hall President</i>	JEANNE SHERIDAN

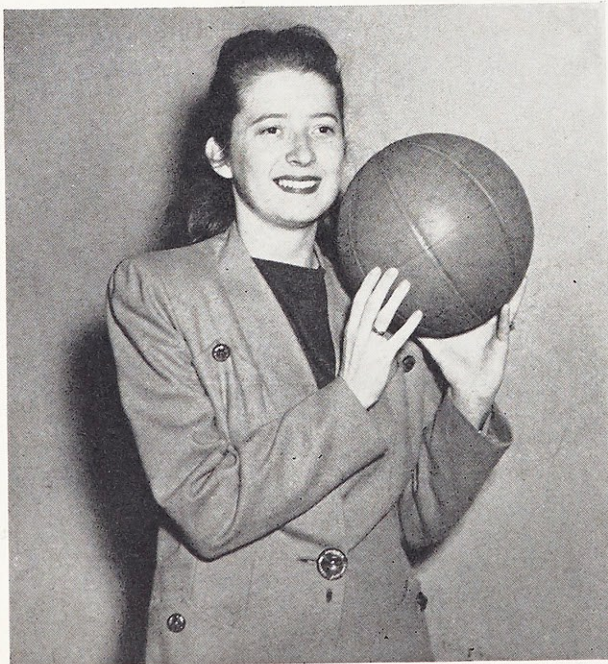
Elections





Michenfelder, Welsh, Jostedt, Payne, Gaines, Cooper, Wieneke, VanBrunt

Athletic Association



Dot Gaines

Association as well as team captained by Dot . . . new gym, new constitution, Athletic Board . . . Ping-Pong Tournament netted by Gerry . . . revised point system brought popular participation in ice skating, swimming, bowling, riding . . . our enthusiasm converted into cheers by Janie, Jean, Betty Lou, Taffy, Jane and Miriam . . . vigorous varsity chosen by Miss Donovan . . . oranges and towels, courtesy of Managers Keefer and Kraft . . . year closed with earned honors at bountiful banquet.

OFFICERS

President.....DOT GAINES

Vice President.....JAYNE PAYNE

Secretary

MARGARET MARY WHELAN

Treasurer.....BONNY JOSTEDT

REPRESENTATIVES

Senior.....CISSY WELSH

Junior.....ANN MICHENFELDER

Sophomore.....GINNY COOPER

Freshman.....MARY JO VANBRUNT



Basketball Practice



Frerker, Payne, Hanley
Nicely, Knight, Taylor



D. Welsh, J. Field, Whelan

The Lauretanum

Editor.....JOAN MAZZONI

Assistant Editor.....JO SERAFINI

Associate Editors

MARY MARGARET HOFFMAN

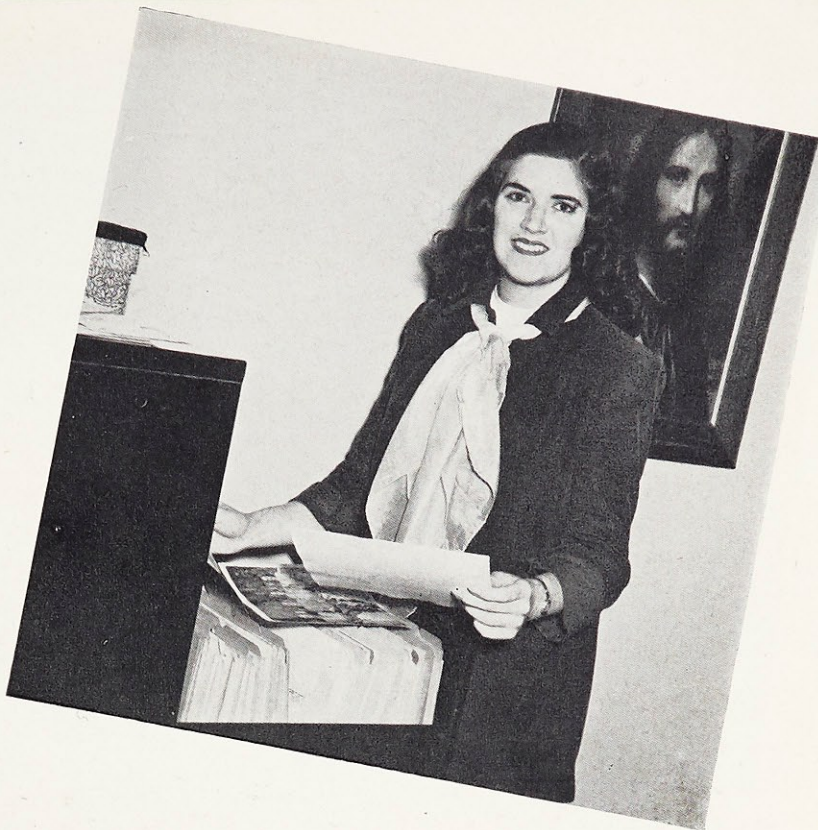
JAYNE PAYNE

Make-Up Editor.....BONNY JOSTEDT

Circulation Manager.....PEGGY MASON

Business Manuager.....VIRGINIA STACK

Moderator.....SISTER ROSE MAUREEN



Joan Mazzoni

Our hope—that this book may recall dreams and memories of your life at Webster.

Our sincerest thanks—to Sister Rose Mau-

reen, Sister Mary Louise, Sister Germaine . . . the photographer, engraver, printer . . . Our

Blessed Lady.



Jostedt, Payne, Stack, Mr. Swain, Hoffman, Serafini, Mazzoni, Mason



Hoogstraet, Bradley, O'Hara, Jostedt, Cooper, Saner, Payne, Grennan

Slick-paged literary quarterly, with eye-catching pictorial preface . . . combination of "Fine Arts" and diversified fiction, interposed with saucy sketches and picturesque poetry . . . cultural treatment of controversial topics . . . "Just Among Ourselves" . . . proofs en route to Cape Girardeau . . . Jane, chief of staff.

The Loretine

Editor-in-Chief JANE O'HARA

Assistant Editor BILL BRADLEY

Associate Editors ROSEMARIE SANER
MARY FRANCES KING

Circulation Editors BONNY JOSTEDT
GINNY COOPER

Art Editors KAX HAMMES
BETTY LOU TAYLOR

Business Editor MARY CLARE KIRCHMER



Jane O'Hara

Choral Club

Indispensable for Websterites who prefer their vocal expression of music in harmony . . . distinctive direction by Mr. Millar . . . produces choral members and offers both training and recreation to its members . . . choric Christmas celebration . . . provides entertainment at assembly programs . . . admirably represents Webster at civic and religious functions.



Mr. Millar; Voss, Secretary; Gleason, Treasurer; Hayes, Vice-President; DeLeo, President



First Row: Jones, L. Stuever, Rittmanic, Stull, Kunz, Hayes, Schmuck, Ruebling, Schnur, Monnig, Willoughby, Lee, Mitchell, Benanti, Fullenkamp, Wolfe, Starbuck, Belglio, Gleason, Wheeler, Daly, Wesley, Reynolds, J. Murphy

Second Row: Thoman, Lindeman, Meyrose, Friend, Epperson, Gebhart, Field, Thornhill, Bornhurst, Kilker, Kraft, O'Bryan, Moore, Dunsford, Compton, Delin

Third Row: Boos, Ball, M. J. Stuever, Ashbrook, Jefferson, Mattingly, Braeckel, McAvoy, Reno, J. Jablonski, Mason, Mullally, Perry, Fresenburg, Nicolson, Buckler, DeLeo



Orchestra

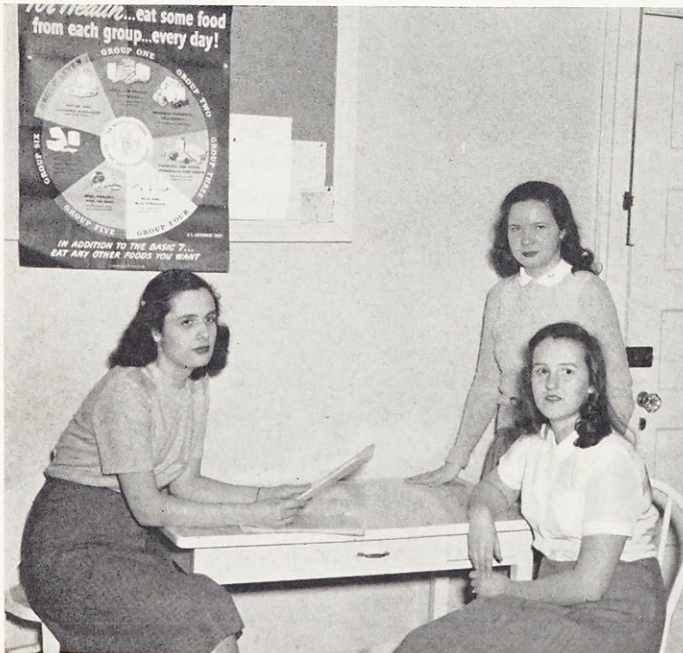
Edgington, Missel, Miss Pech,
Robison, Hayes, Foy, R. A.
Sloan, Lindhorst, Kellogg,
Bradford, R. M. Sloan,
Thoman

Dietetics Club

Jeanne introduced Nancy Volm as featured guest speaker in December . . . dinner meeting in May—a most appropriate close for a year filled with fun a la food.

Math Club

Provided intellectual recreation for those interested in math . . . opportunities offered students in the business world studied . . . project of the year was the compilation of a list of requirements for positions involving math.



Sheridan, President; Webb, Program Chairman;
Reichenbacher, Secretary-Treasurer



Pott, Secretary; Johnson, President; Emmick,
Vice-President-Treasurer

I. R. C.

World citizens studying problems of the Near and Far East, South America "convention-alists" intercollegiate interest in international subjects successfully demonstrated at third annual panel discussion.

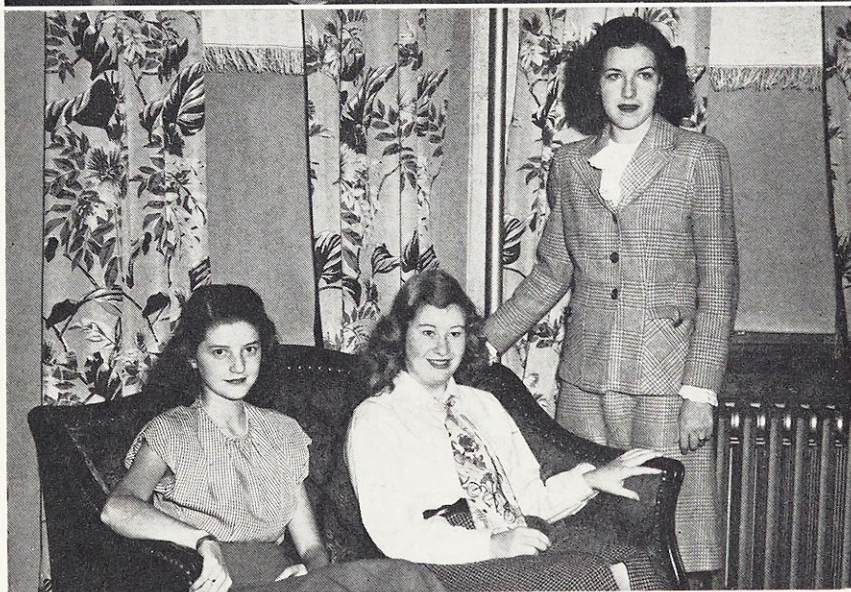
C. Murphy, President; Dr. Donovan; Rozier, Secretary; Johnson, Vice-President; L. Murphy, Treasurer



French Club

Entertaining the Señoritas with "Sourd Comme un Pot" . . . Dr. Donovan guest-speaking on exchange of students . . . elucidation on Laval . . . hilarious histrionics of "Les Trois Ours."

Corriveau, President; Andrew, Secretary-Treasurer; L. Murphy, Vice-President



Spanish Club

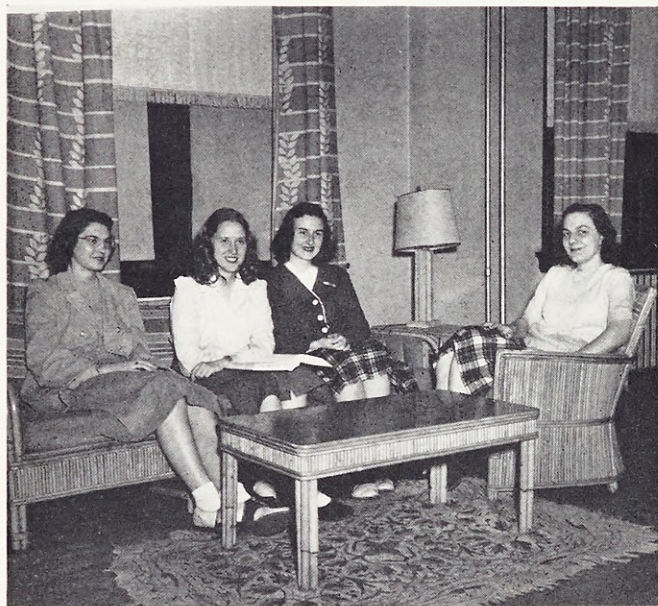
High entertainment in an animated presentation of "Little Red Riding Hood" *en español* . . . hands across the border as host to the French Club at joint-meeting . . . Mexican Hat Dance . . . melodrama . . . traditional and successful Pan-American Day.

Dallaire, Secretary; Andrew, President; Tolon, Vice-President



Dramatics Club

First nighters at the Community Theatre . . . staunch support by Sister Dolorine . . . comprehensive cuttings of *Cyrano de Bergerac*, *The Snake Pit*, "Hats" . . . fostering interest in things dramatic.



Michenfelder, Secretary; Baumgarten, Treasurer; Rosenthal, Vice-President; Higgins, President



Henry, Secretary-Treasurer; Hoogstraet, President; Serafini, Vice President; Baumgarten, Archivist

Dunphy, Secretary-Treasurer; Higgins, Vice-President; Krebs, President

Poetry Club

Novel inspiration added in the form of muse-laden newcomers . . . alumna speaker on Emily Dickinson. Flair for facetious verse unearthed heaps of humor. Spring-fever jaunt to the Merri-mac quarry where favorite poems were read . . . ever-welcome guest speaker, Dr. Emmet Kane.

Classical Club

Scholarly study of the lives of the Greeks and Romans . . . analysis of the architecture, buildings, customs and dress. Immortal literature reviewed and re-loved . . . erudite aid lent by Sister Edmond.



Jeanne Sheridan

The House Committee, ready representatives of resident students . . . held open house for freshman inspection . . . perfect for planning picnics or parties . . . lit the candles for our Christmas dinner . . . schedulers for busses, boarders' meetings, Mass attendance and table reservations . . . makes the hall more like home.

Ivy Room Committee

Rejuvenation of what wonderful changes . . . the walls, piano, the patio effect. Spirit and entertainment are still the same, friendliness, bridge games, song fests and talk. The Ivy Room is truly a vital part of every Websterite . . . memories linger as the crowds leave for class, vacation, graduation.

House Committee

Hall President.....JEANNE SHERIDAN

Senior Representative.....JANE CLARK

Junior Representative.....MARY MEDLEY

Sophomore Representative
MARGARET MARY WHELAN

Freshman Representative.....MARY ELLEN KILKER



Above: Whelan, Clark, Medley, Sheridan, Kilker

Below: Jostedt, Weinacker, Kirchmer, Hammes



Fall Formal

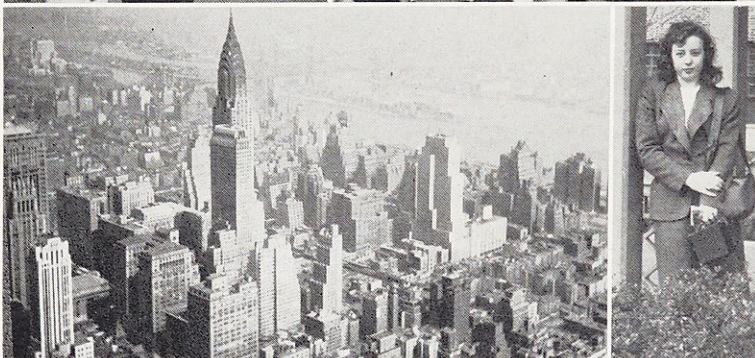
Autumnocturne in the Ivory Room
of the Jefferson . . . first chance to
wear fall formals . . . couples drift-
ing dreamily to songs that re-echo in
our hearts . . . Mid-Winter Prom-
nade at Congress Hotel . . . sweet
music by Russ David's orchestra . . .
highlights in our social life . . .
nights to remember—to put away in
Memory's Scrapbook.



Dinner Dance

Educational Tour

Left Union Station April 5th at 10:30 A. M. . . . Bridge batty . . . Richmond for Easter services . . . sight-seeing in Williamsburg, then on to Washington . . . Mount Vernon . . . Annapolis and noon parade . . . Philadelphia . . . police escort to Atlantic City . . . Boardwalk . . . New York skyline . . . Statue of Liberty . . . West Point . . . St. Patrick's . . . Fifth Avenue Waldorf Astoria . . . Diamond Horseshoe . . . Niagara Falls and Canada . . . Homeward bound . . . Unforgettable memories—an education no book could give.



New York and points east



Hotel Traymore, Atlantic City

Dance



Chotz and Betty Lou

Webster's

Big Fry and Small Fry duet a success on and off stage . . . King Rex's chosen queen, Lois, from the Senior Class . . . student participation creating a carnival of fun for cast, crew, and audience . . . Our Lady of the Magnificat, thank you.

- Chairman* CHARLOTTE BAUMGARTEN
- Assistant Chairman* BETTY LOU TAYLOR
- Songs* YOMA DELEO
- Dances* MARILYN HAYES
- Music* MARY MARGARET HOFFMAN
- Programs* JO SERAFINI
- Ads and Patrons* KAY MULLIGAN
BONNY JOSTEDT
- Tickets* ANNE ROZIER
- Costumes* VIRGINIA STACK
- Make-up* JOAN MAZZONI
- Scenery* ANN MICHENFELDER
MARTY UNSER
- Props* ROSEMARY SCHMUCK
- Lighting* ANN STULL
VIRGINIA BRABEC
- Publicity* JAYNE PAYNE



Making-up

Mardi Gras

"Waltz of the Flowers"



"Sugar Blues"



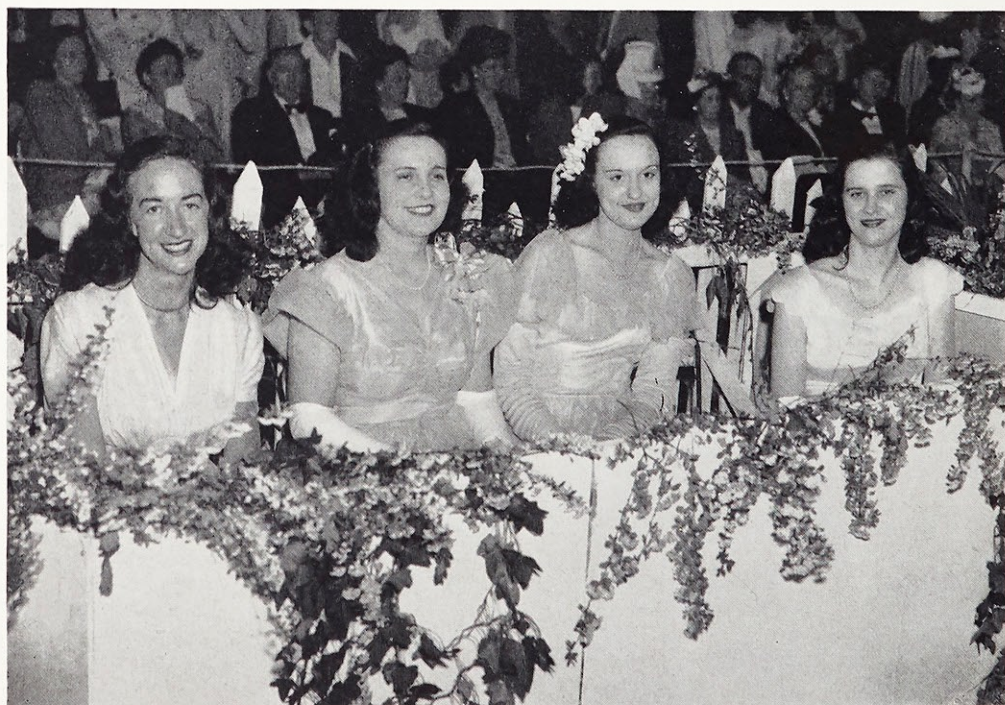
"King Rex and his Queen"



May



Our Queen of Love and Beauty



Former Queens of Webster

Day

Keeping the traditional grandeur but with several innovations, the Court of Love and Beauty paid tribute to the retiring queen, Trudy Bernard, and to Jeanne Sheridan as she began her regal reign.

Sharing the acclaim were former queens Jean Willard, Lucille Walde, Virginia Daly and Helen Thurmond, whose return heralded the celebration of the alumnae's silver anniversary.

The Senior daisy chain and royal jesters added to the picturesqueness as for the first time lights illuminated the gala gathering.

Queen JEANNE SHERIDAN

Retiring Queen TRUDY BERNARD

Senior Maids { DOROTHY McAVOY
BETTY COOPER
MARIE MORHEUSER

Junior Maids { KATHLYN HAMMES
KAHLEEN MULLIGAN

Sophomore Maids { LUCILLE McAVOY
LUCIAN QUICK

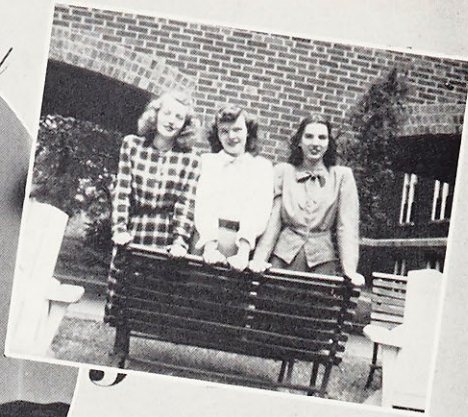
Freshman Maid SHIRLEY BYNUM

Jeanne and her Court



SEPTEMBER

19



16 17 18



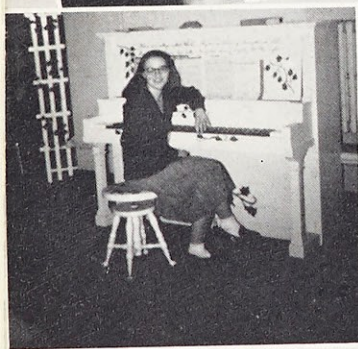
22



29



2



Tue

FM 17

LO 25

Sat



Throughout

Mrs. B.

New out-look

Chalet chatting

Winter address

Piano posing

East meets West

On to victory

hout

the Year

NOVEMBER

19

Sun

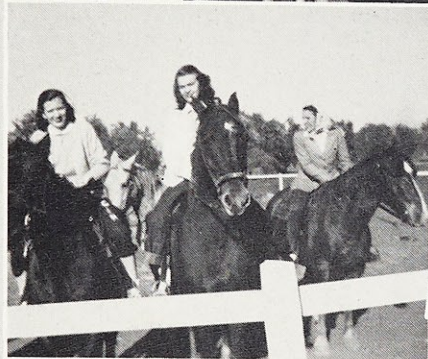
7

14

21



Double-dating



Equestriennes



"Joyous Season"

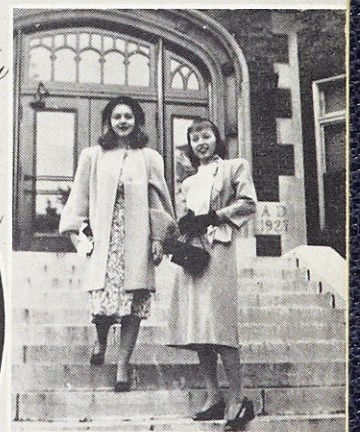
8

DECEMBER

Sun

Thu

Colonnade creche



They used Ponds

11

16

17

18

Weary shoppers

10



On guard

22

2

23



9

3

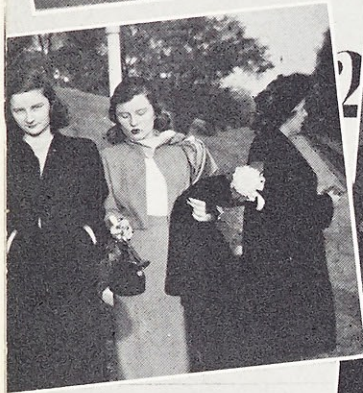


Throughout

Bonfire ballads

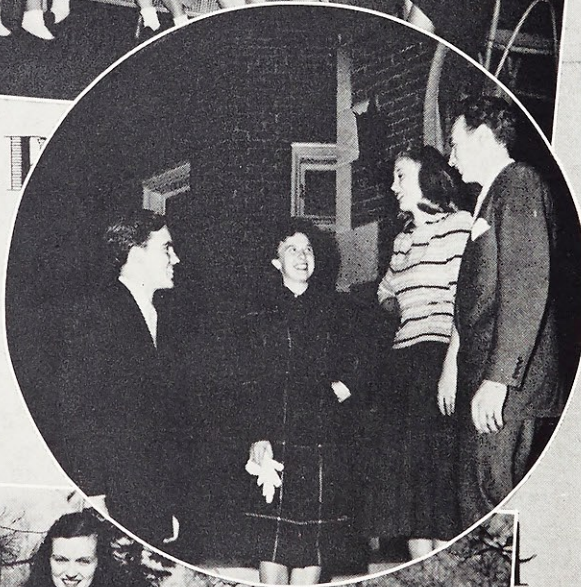
Family affair

15 16 17



Ready for rails

Who's Who



Colorado bound

"Out of the Band Box"



Snow frolics

8

24

hout

the Year

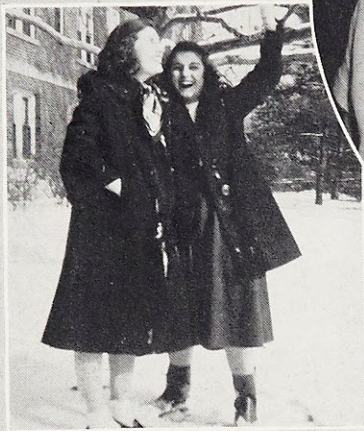
Striking?



Tuesday



Let it snow



Watch that road!

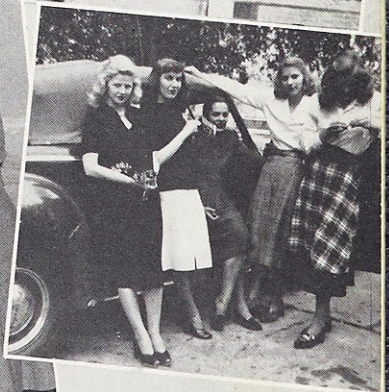
EAST



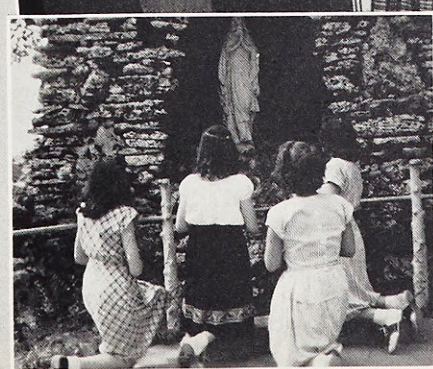
Corn colonels



Lovely to look at



Homage to our Queen



Champions all



MAY

19

Throughout



Our good neighbors

Future plans

16 17 18 19



26 27 28 29



Stein madness

Laval linguists

Sun Mon Tue



7 8 9 10

Celestial chalet

18

25



17

24

31

Wonderland fantasy

hout

the Year

S

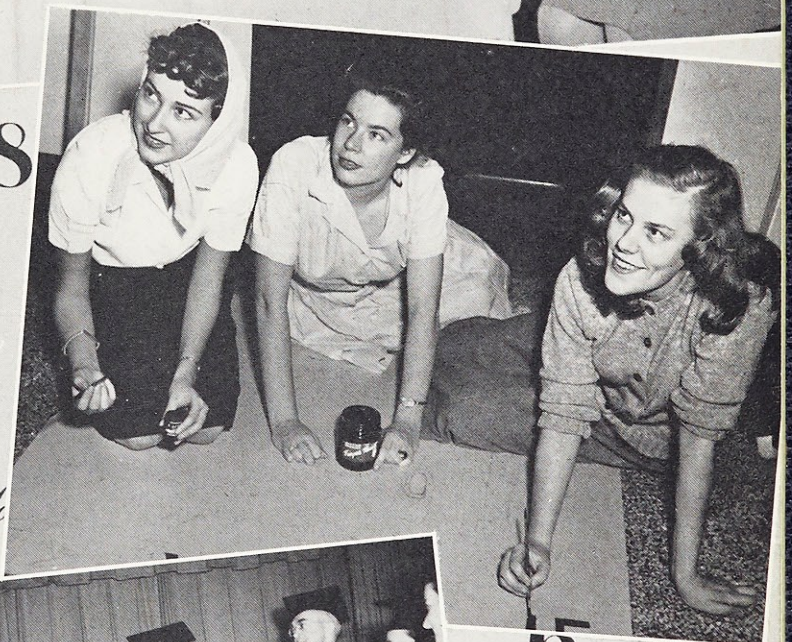
JUNE

Special Date



27 28

Poster Painters



S

Sun Mon

A long-awaited day



5 7
13 14
20 21

Pony express

22 23

29 30



Formal Photographs:

PIERLOW PORTRAITS

Division Pages:

EDWYN STUDIOS

Informal Photographs:

SISTER M. GERMAINE, S.L.

GLENN OGLE

JOHN GOLDSTON

JACK ZEHRT

Covers:

THE BECKTOLD COMPANY

Engraving:

CENTRAL ENGRAVING COMPANY

Printing and Binding:

EDEN PUBLISHING HOUSE

Designed by:

HARRY J. SWAIN, JR.