

nineteen thirty eight

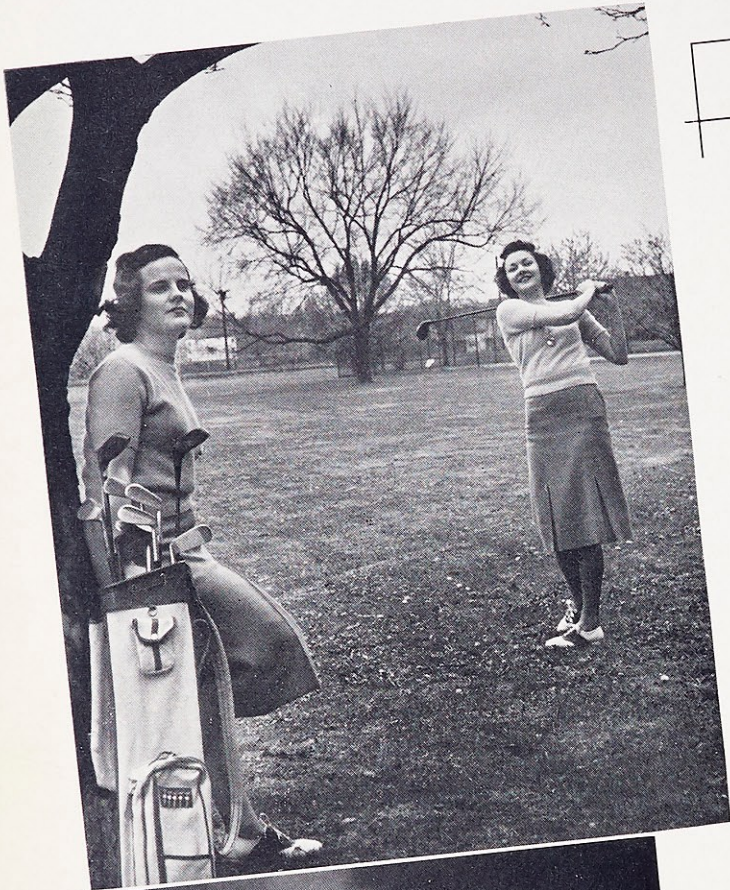
LAURETANUM

webster college

LIFE AT
WEBSTER
IN '38



WE PRESENT FOR YOU



The Lauretanum Staff

VICTORIA MORTLAND

Editor-in-Chief

DEANNE PAULEY

Associate Editor

DORIS ROGLES

Business Manager

DOROTHY HENDERSON

Circulation Manager

JANE McFARLAND

Patrons



AND SO

We give this book to you—Students of Nineteen Hundred Thirty-eight. We have tried to present accurately each event, great and small, that has made up this year in Webster College school life. Though these events are fresh in our minds today, as time goes by, they will be forgotten, and it is our hope that when you scan the pages of this book, they will help you to relive years at Webster. If this is accomplished, we shall have succeeded in our efforts to make this book an ever-living memory.



BUT WE PAUSE

To dedicate this Nineteen Hundred
Thirty-eight Lauretanum to Reverend
Daniel A. Lord, S. J.

Father Lord has been untiring in his efforts to further every movement sponsored by the faculty and students of Webster; he has generously given time and energy for the betterment of all that concerned our spiritual and temporal welfare, and he has fired our souls with an ardent love for Christ and His Mother. It is, then, with gratitude and appreciation that we offer this tribute to him who has been our inspiration and our guide.



AND IN ORDER

BOOK ONE
Intellectually Speaking

BOOK TWO
Socially Inclined

BOOK THREE
Co-organization

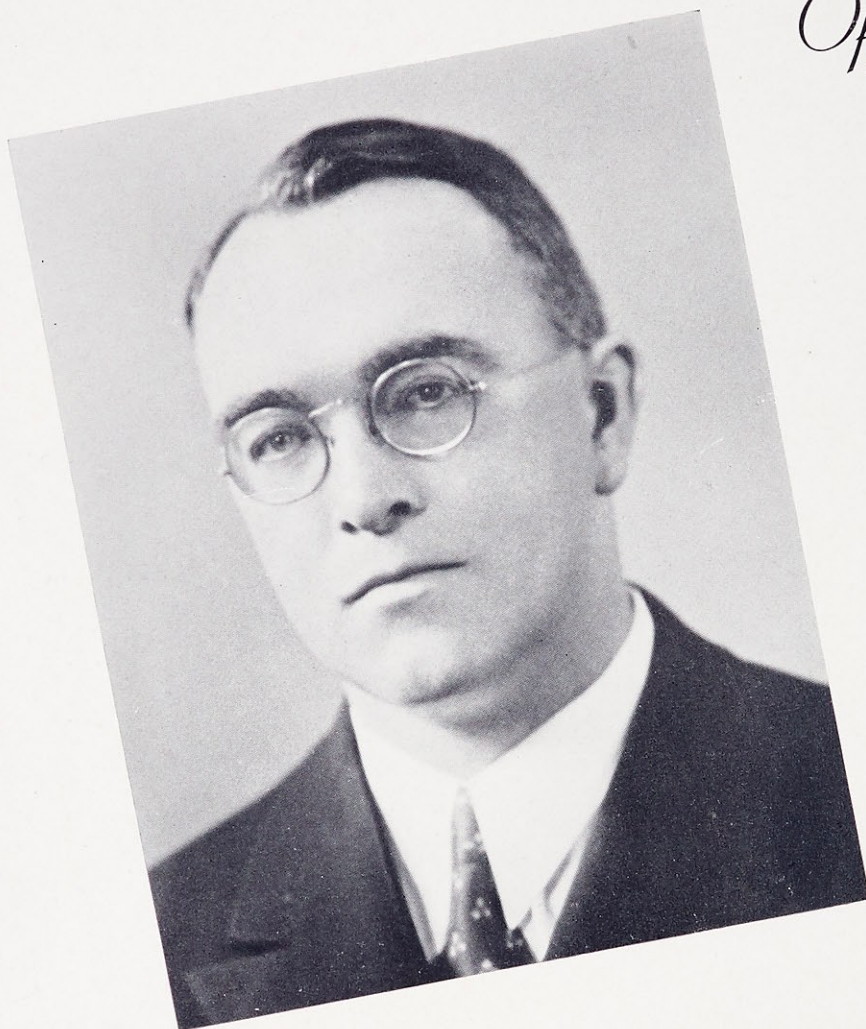
BOOK FOUR
Active Competition





L A U R E T A N U M 1 9 3 8

*Officers of
Administration*



Webster's President

Dr. George Francis Donovan

GEORGE FRANCIS DONOVAN, A. M., Ph. D.
President

MOTHER M. RICARDA BLINCOE, A. B.
Regent

SISTER LILLIAN CLARE REED, A. B.
Dean

SISTER FRANCES MARIE WALSH, A. M.
Dean of Women

SISTER M. BORROEMO HYNES, A. M.
Registrar

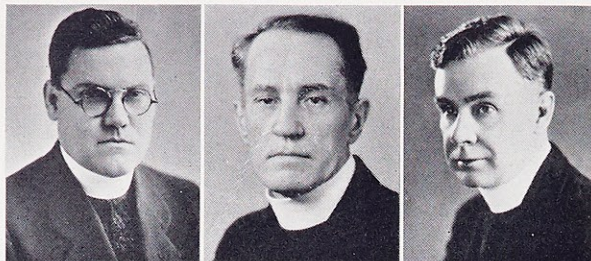
SISTER KATHLEEN MARIE FOLEY
Treasurer



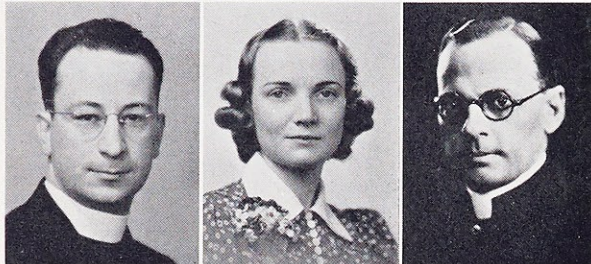
The Administration Building overlooking the back campus.



L A U R E T A N U M 1 9 3 8



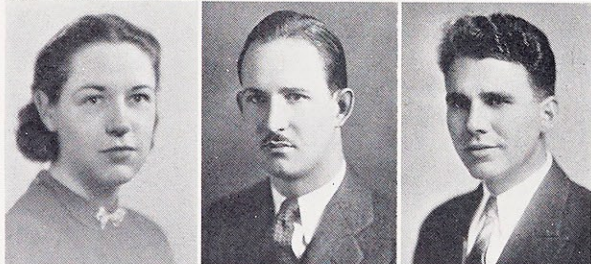
Rev. L. P. Foley
Rev. L. F. Doyle
Rev. J. P O'Malley



Rev E. J. Kammer
Ella M. Smith
Rev. R. J. Kirschenheuter



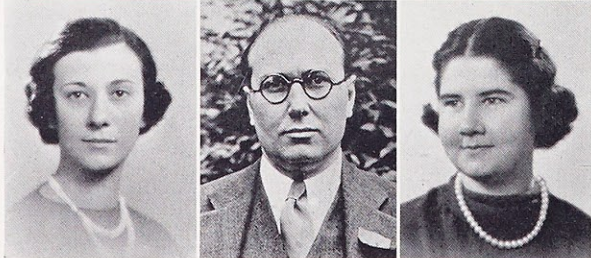
R. J. Thompson
Anna McClain Sankey
Christian Bonnet



Mary A. Fregeau
V. J. Bourke
F. W. Laird



Celia J. McCue
Margaret M. Brey
Mary E. Killian



Leola R. Michaels
C. C. Clayton
Elinore M. Ludden



Spring days and Spring fever outside of Loretto Hall.



L A U R E T A N U M

1 9 3 8

Faculty

- REV. LEO. P. FOLEY, C. M., S. T. D.
Professor of Philosophy and Director of the Department
- REV. JAMES P. O'MALLEY, C. M., A. M.
Professor of Religion and Director of the Department
- REV. E. J. KAMMER, C. M., A. M.
Instructor in History
- REV. LOUIS F. DOYLE, S. J., A. M., Ph. D.
Associate Professor of English
- REV. RUSSELL J. KIRSCHENHEUTER, C. M., A. M.
Professor of Scripture
- REV. RAYMOND A. HARVEY, C. M., A. M.
Professor of Religion
- LOUIS E. JAMES, A. M.
Assistant Professor of Physics
- FREDERICK W. LAIRD, M. S., Ph. D.
Instructor in Chemistry and Acting Director of the Department
- C. C. CLAYTON, B. J.
Instructor in Journalism
- VERNON J. BOURKE, A. M., Ph. D.
Instructor in Philosophy
- MARY E. KILLIAN, A. M.
Instructor of Dietetics and Director of the Department
- CELIA J. McCUE, M. S.
Instructor in Physical Education
- R. J. THOMPSON, A. M.
Instructor in Philosophy
- ELINORE M. LUDDEN, A. M.
Instructor in Speech
- MARGARET MARY BREY, A. M.
Instructor in Art
- CHRISTIAN BONNET, LL. M.
Instructor in French
- MARY ALMA FREGEAU, A. M.
Instructor in English
- LEOLA R. MICHAELS, B. S.
Librarian
- MRS. ANNA McCLAIN SANKEY, A. B.
Instructor in Dramatic Art
- NELSON J. WADE, M. S., Ph. D.
Instructor in Biology and Acting Director of the Department
- ELLA MARIE SMITH, R. N., B. S.
Director of Student Health Service



Between classes in front of Loretto Hall

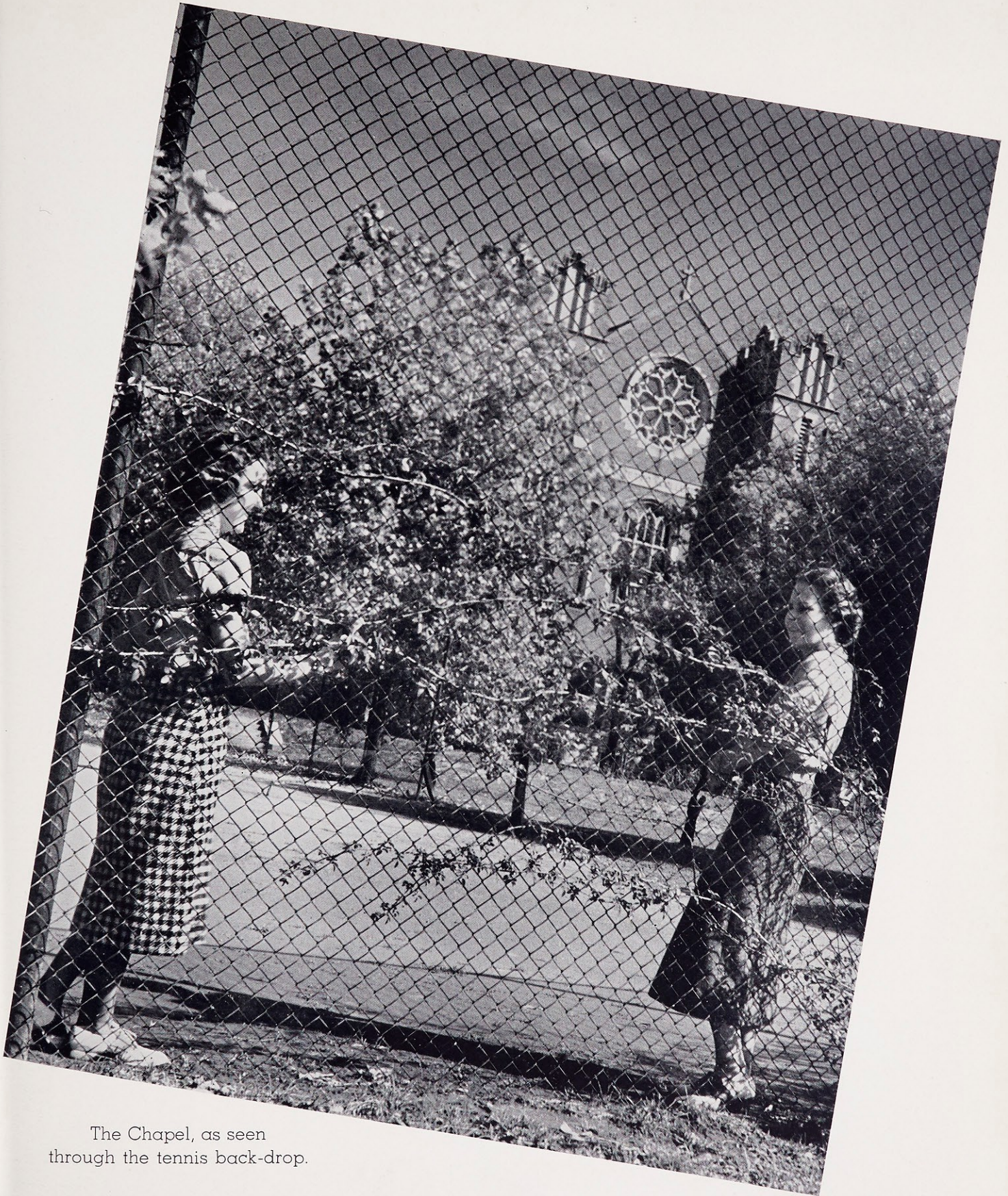


L A U R E T A N U M

1 9 3 8

Faculty

- SISTER MARY LEON ALBIN, A. M.
Instructor in Education and Community Supervisor of Elementary Schools
- SISTER MARY LOUISE BEUTNER, A. M.
Instructor in English
- SISTER ALOYSIA MARIE BLINCOE, A. M.
Professor of English and Director of the Department
- SISTER MARY PAULA CARETTO, B. M.
Instructor in Voice
- SISTER MARY BORGIA CLARKE, A. M. Cand. Ph. D.
Professor of Mathematics and Director of the Department
- SISTER MARY HARRIET CONDON, A. B.
Graduate Fellow in Biology, St. Louis University
- SISTER MARY EDMOND FERN, A. M., Ph. D.
Professor of Classical Languages and Director of the Department
- SISTER GERMAINE FOGARTY, B. S.
Instructor in Mathematics and Physics
- SISTER ISABELLE MARIE FOLEY, A. M.
Instructor in Latin
- SISTER MARY ADALINE GEMOETS, Mus. M.
Professor of Theory of Music and Director of the Conservatory
- SISTER MARY ROBERTA HARDESTY, A. M.
Professor of French
- SISTER MARY ALPHONSINE HENSEN, B. M.
Instructor in Organ
- SISTER MARY JOECILE HUNLETH, B. M.
Assistant in Conservatory, Violin
- SISTER M. BORROMEO HYNES, A. M.
Instructor in Education
- SISTER DOROTHY MARIE JENKINS, Litt. B.
Instructor in Art
- SISTER MARY DOLORINE MORRISSON, A. M., Ph. D.
Professor of Speech and Director of the Department
- SISTER MARY ETHELBERT OWENS, A. M.
Instructor of Spanish and Director of the Department of Modern Languages
- SISTER MARY ALONZA SMITH, M. S., Ph. D.
Instructor in Chemistry
- SISTER MARY AUBERT TENNELLY, A. M.
Instructor in History
- SISTER FRANCES MARIE WALSH, A. M.
Professor of Education



The Chapel, as seen
through the tennis back-drop.

June eighth now fast approaches, the day so long and eagerly anticipated by those who will this year close another chapter in the history of life. Hours of worry and burning midnight oil, hours of lectures and pages of notes, hours of toilsome and painstaking labor in the pursuit of education are fast forgotten in the joy of a glorious graduation and the realization of another achievement. Great plans are being made for the future! We, fellow students of Webster, who have yet to complete our college course, hope that the future of each senior will be replete with happiness as she strives to reach the high goals that four years at Webster have helped her to make.

Book One

Intellectually



y Speaking



L A U R E T A N U M

1 9 3 8



Theresa Buckler

Loretto, Kentucky

A. B. in Latin and
French

Whose class did you think you were in, Teasie, that you went to sleep in Church? What is it—Encephalitis? To all those concerned we've found out her secret passion—eating! Maybe she inherits it from her "kin" in Kentucky. It's O. K. as long as you run it off in basketball.

Sodality, '35, '36, '37, '38
Student Government Board, '38; Faculty
Representative
Hall President, '38
Class Vice-President, '37
Classical Club, '36; President, '37, '38
Le Cercle Francais, '36, '37, '38
Athletic Association, '35, '36, '37, '38
Press Club, '36, '37
C. S. M. C., '35, '36, '37, '38
Biology Club, '36
Loretine Staff, '38
Vodvil, '36, '38
Varsity Basketball, '37, '38
Class Basketball, '35, '36, '37, '38
Class Volley Ball, '35, '36; Captain, '37, '38
Class Baseball, '35; Captain, '36, '37, '38





8

W E B S T E R C O L L E G E

Peggy Chamberlain

Clayton, Missouri

Ph. B. in Speech
and English



Prone to running out of gas in the middle of Lindell Blvd. while leading a parade, and picking table tops as perfect spots for dancing the "Big Apple," we give you Peg. Her ideal conception of time is sleeping during classes and gallivanting to the gay spots at night.

Vodvil Chairman, '38
Loretto Players, '35, '36, '37, '38
Le Cercle Francais, '35, '36
Sodality, '35, '36, '37, '38
C. S. M. C., '35, '36, '37, '38
Vodvil, '35, '36, '37, '38





L A U R E T A N U M

1 9 3 8 W



Veronica Coad

St. Louis, Missouri

B. S. in Chemistry
and Mathematics

Coad's pet threat is to tell certain professors what and when some day. We're anxiously waiting! Why is she so careless of the law these days—could it possibly be that star and certain brass buttons? She heads the list in the number of new hair-do's per month.

- Student Government Board, '38
- Class President, '38
- May Day Maid, '36, '37
- Lauretanum Editor-in-Chief, '37
- Athletic Association, '35, '36; Treasurer, '37, '38
- Tennis Doubles Champion, '37
- Varsity Basketball, '35, '36, '37, '38
- Sodality, '35, '36, '37, '38
- C. S. M. C., '35, '36, '37, '38
- Mission Board Representative, '36
- Personnel Director, '38
- Web Staff, '38
- Chemistry Club, '35, '36, '37, '38
- Mathematics-Physics, '35, '36, '37, '38
- Le Cercle Francais, '36
- Campus Guide Editor, '38
- Class Basketball, '35; Captain, '36, '37, '38
- Class Baseball, '35, '36; Captain, '37, '38
- Class Volleyball, '35, '36; Captain, '37, '38





8 W E B S T E R C O L L E G E

Mary Jane Dorsey

St. Louis, Missouri

A. B. in English
and French



Another sleepy Senior and one who likes to snooze in Church. Fie! Fie! Be careful or this habit may rob you of your secretarial job in "the" office, and then just think, no more spaghetti dinners escorted by a certain Doctor. We've heard you've fallen many times—in tumbling of course.

- Sodality, '35, '36, '37, '38
- C. S. M. C., '35, '36, '37, '38
- Class Secretary, '36
- Loretine Staff, '38
- Classical Club, '36
- Music Guild, '37, '38
- Le Cercle Francais, '36, '37, '38
- Orchestra, '37, '38
- Poetry Club, '37, '38
- Short Story Club, '36, '37; President, '38
- Class Baseball, '37
- Class Volleyball, '35, '38





L A U R E T A N U M

1 9 3 8



Margaret Fink

Labadie, Missouri

A. B. in English
and French

Le Cercle Francais, '35, '38
Chemistry Club, '36
Lauretanum Staff, '37
Editor-in-Chief of Loretine, '38
Sodality, '37, '38
C. S. M. C., '37, '38
Vodvil, '36, '37, '38
Loretto Players, '37, '38
Poetry Club, '38
Library Staff, '35, '36
Cooperative Association, General Manager, '37, '38

Bang! Slam! Crash! Shoes flying in air—"I'm furious." Sounds like Marg's on a tear again. Pin-ochle is her favorite pastime and then she never says "I'm bored." We hear you're a connoisseur of dress—that outlandish outfit in the Vodvil? However, you were lady-loveliness herself at the Prom.





8 W E B S T E R C O L L E G E

Peggy Gamp

Webster Groves, Missouri

A. B. in French
and Latin



It seems the Senior class rated a Philosopher this year — none other than our "Peppy" Gamp. This youngster's idea of life is that men are bores, life is futile, life is vain. We've been wondering if during her appendectomy "the men in white" have made any difference in her attitude?

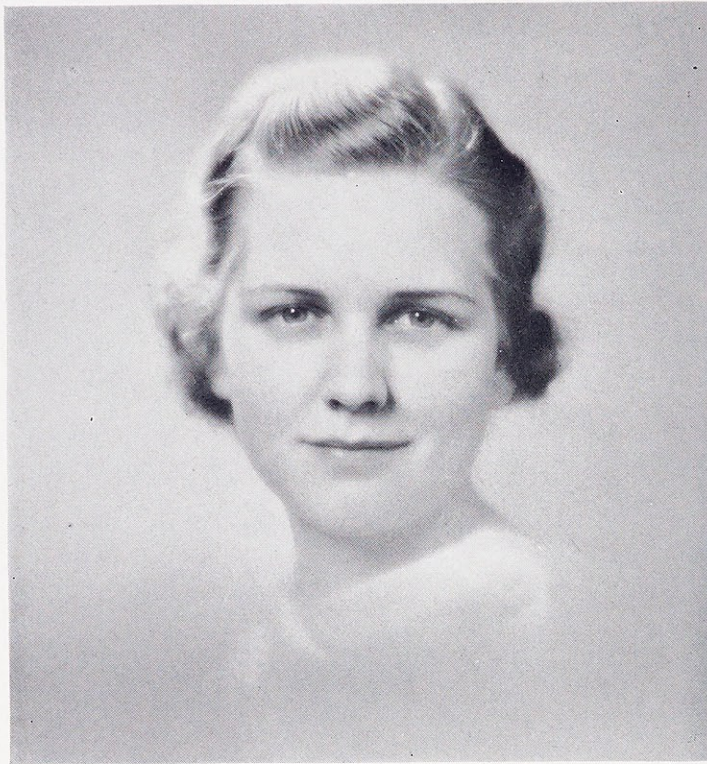
- Sodality, '35, '36, '37, '38
- Student Spiritual Council, '35, '37
- C. S. M. C., '35, '36, '37, '38
- Loretto Players, '35; Treasurer, '36, '37, '38
- Class Vice-President, '36
- Personnel Board, '37
- Loretine Staff, '38
- Cooperative Association, Secretary, '37; Assistant Manager, '38
- Classical Club, '36, '37; Vice-President, '38
- Le Cercle Francais, '36, '37, '38
- Vodvil, '35, '36, '37, '38
- Press Club, '35, '36, '37
- Choral Club, '36
- Biology Club, '36
- Class Volleyball, '35





L A U R E T A N U M

1 9 3 8



Melba Godar

Eureka, Missouri

A. B. in English
and History

What is it about sheep that attracts Melba so strongly that she wants to sit up all night and count them, for we hear she simply loves coffee and makes it all the time. Or maybe she uses this as a means of staying awake to memorize her song sheets.

- Sodality, '35, '36, '37, '38
- C. S. M. C., '35, '36, '37, '38
- Biology Club, '36
- Classical Club, '37; Vice-President, '38
- Le Cercle Francais, '36
- Library Club, '36, '37





8

W E B S T E R C O L L E G E

Ruth Guido Garizio

Colorado Springs, Colorado

B. S. in Music



"Spookie, eat your spinach, it's good for you"—these words show the solicitous, maternal instinct in Ruth. We'd like to furnish her with some cotton to stuff her ears when Benny Goodman has a hot jam session since it seems that popular music is her pet hate.

Sodality, '35, '36, '37, '38
C. S. M. C., '35, '36, '37, '38
Mission Board, '37
Student Government Board; Secretary, '38
Choral Club; Conductor, '36, '37, '38
Orchestra; Conductor, '35, '36, '37
Music Guild, '35, '36; Secretary-Treasurer, '37;
Vice-President, '38
Le Cercle Francais, '36, '37
Loretine Staff, '38
Athletic Association, '35, '36, '37, '38





L A U R E T A N U M

1 9 3 8

W



Ruth Hauser

Kankakee, Illinois

A. B. in French
and Spanish

This little mite prides herself on being the smallest in the school and with 89 pounds, the record's hard to beat. By snooping around we found out that Spook got her name from the fact that, because she couldn't sleep at night when a Freshie, she went night-walking in the halls.

Sodality, '35, '36, '37, '38
C. S. M. C., '35, '36, '37; Class Representative, '38
Loretine Staff, '38
Le Cercle Francais, '35, '36, '37; President, '38
Spanish Club, '35, '36, '38
Orchestra, '35, '36, '37, '38
String Quartet, '35, '36, '37
Music Guild, '38
House Committee, '37, '38
Athletic Association, '35, '36, '37, '38





W E B S T E R C O L L E G E

Jean Henning

St. Louis, Missouri

A. B. in English
and Spanish



We've made "Stay as Sweet as You Are" Jean's theme song. Her slogan is "Now, listen, kids, that copy just has to be in by Friday". Now for the announcement—don't worry, Jean, we're taking up a collection to provide for your old age until that Med. student hangs out his shingle.

Web, Editor in Chief, '38; Assistant Editor, '37
Student Government Board; Treasurer, '37
Personnel, '37
Sodality, '35, '36, '37, '38
C. S. M. C., '35, '36, '37, '38
Short Story Club, '37, '38
Press Club, '35, '36, '37
Spanish Club, '37, '38
Chemistry Club, '35
Vodvil, '36, '37





L A U R E T A N U M

1 9 3 8



Marie Herr

St. Louis, Missouri

A. B. in English
and French

A gift from Slacks will never bring Marie back, for their place and their radio programs are her pet aversions. We've noticed that a certain English professor banks his last dollar on this lassie's literary genius or is it talent? Could it be those sparkling brown eyes that rate those A's?

Poetry Club, '37; President, '38
Vodvil Publicity Chairman, '38
Short Story Club, '37, '38
Le Cercle Francais, '36, '37, '38
Classical Club, '36
Class Treasurer, '36, '38
Campus Guide, '37, '38
Sodality, '35, '36, '37, '38
C. S. M. C., '35, '36, '37; Secretary, '38
Music Guild, 37, '38
Choral Club, '35





W E B S T E R C O L L E G E

Virginia Marie Herre

St. Louis, Missouri

B. S. in Biology
and Chemistry



What is it that's so attractive about the other side of a St. Louis University library table that gives you that soulful look? One day we heard you almost went boom on your way into religion class—don't tell us that Seven-Up affects your head that way.

- Sodality, '35, '36; Vice-Prefect, '37; Vice-Prefect, '38
- S. S. C., '37, '38
- C. S. M. C., '37, '38
- Biology Club, '36
- Chemistry Club, '36, '37, '38
- Le Cercle Francais, '36, '37
- Classical Club, '37
- Cooperative Board; President, '37 and '38
- Library Club, '36, '37





L A U R E T A N U M

1 9 3 8



Rose Mary Hoing

Kirkwood, Missouri

A. B. in History
and English

There's a wild rumor floating around that somebody trumped somebody's ace. It couldn't be that bridge fiend Hoing, could it? We're still trying to find out what there is about the center-line in basketball that's so engrossing. Here's a Blue Ribbon to you on your ice-cream sandwiches.

Choral Club, '35, '36, '37, '38
Spanish Club, '35
Classical Club, '36, '37; Vice-President, '38
International Relations, '37
Class Baseball, '35, '36, '37, '38
Class Basketball, '35, '36, '37, '38
Class Volleyball, '35, '36; Captain, '37, '38
Sodality, '35, '36, '37, '38
C. S. M. C., '35, '36, '37, '38
Vodvil, '38
Biology Club, '36
Athletic Association, '35, '36, '37, '38





8

W E B S T E R C O L L E G E

Ann Huneke

St. Louis, Missouri

A. B. in English
and French



This curly-haired Miss continually threatens to have her hair straightened. Please don't, Ann, we love it and besides we've heard those dark-skinned pressers are really dangerous. We hear that Drama has a fascination for you and that you'd like to make the American Theatre your home.

- Sodality, '35, '36, '37, '38
- C. S. M. C., '35, '36, '37, '38
- Le Cercle Francais, 36, '37, '38
- Short Story Club, '37, '38
- Poetry Club, '37, '38
- Class Secretary, '37
- Classical Club, '35, '36





L A U R E T A N U M

1 9 3 8



Dorothy Keeley

East St. Louis, Illinois

B. S. in Music

Do-re-mi-fa-so—"No, Oswald, I know your voice is changing, but —!" That's what poor Dottie puts up with while practice teaching at St. Michael's. But we know you've got it (need we mention your lovely singing at Lenore's wedding). You have made "Alleluja" a high point of history.

Sodality, '35, '36, '37, '38
 C. S. M. C., '35, '36, '37, Treasurer, '38
 Music Guild, '35, '36, '37
 Choral Club, '35; Vice-President, '36; President, '37, '38
 Biology Club; Treasurer, '36
 Spanish Club, '35
 Hall Committee, '38
 Orchestra, '35, '36
 Vodvil, '37





8

W E B S T E R C O L L E G E

Carmelita Klorer

St. Louis, Missouri

A. B. in English
and Spanish



"1-2-3-4-up-down-left-right-owl
That 'darn' bed-post again." And
so Carmen diligently pursues the
hard way to loveliness. Then
proceeds to ruin the whole effect
by her outstandingly hideous get-
ups at masques—remember the
false teeth? Success at last, the
Varsity in her Senior year.

- Sodality, '35, '36, '37, '38
- Sodality Prefect, '38
- Student Government Board, '38
- Class Personnel Director, '37; Freshmen, '38
- Lauretanum Staff, '37
- Class President, '35, '36
- C. S. M. C., '35, '36, '37, '38
- Varsity Basketball, '38
- Class Basketball, '35, '36, '37
- Class Baseball, '35, '36, '37
- Class Volleyball, '35, '36, '37, '38
- Spanish Club, '35, '36, '37, '38
- Classical Club, '38
- Chemistry Club, '35
- Vodvil, '35, '36, '37, '38





L A U R E T A N U M

1 9 3 8



Marian Lower

Puente, California

Ph. B. in History
and Sociology

"Lights! Lights! What's the cue? Groan!" It's Lower again. She flaunts that gorgeous frat. pin under the noses of curious females, but we're still in a haze as to the exact identity of the S. P. (secret passion). We wonder if California was as surprised as we were at the new coiffure.

Sodality, '37, '38
C. S. M. C., '37, '38
International Relations; Secretary, '37; President, '38
Loretine Staff, '37
Web Staff; Associate Editor, '38
Hall Committee, '38
Student Cooperative Association; Treasurer, '38
Vodvil, '37, '38





W E B S T E R C O L L E G E

Margaret Rose Lynn

Chicago, Illinois

Ph. B. in History
and Spanish



What better mascot could the C. M.'s have than "Leggy Pin". Knocked off bonnets mean nothing to her when a look at a Roman collar is concerned. "Give me just one more minute to get undressed, I had to lock the Red-room", but she never needs one more minute to get ice cream.

- Class Vice-President, '38
- Sodality, '35, '36, '37, '38
- C. S. M. C., '35, '36, '37, '38
- Spanish Club, '35, '36, '37, '38
- Biology Club, '36
- Library Staff, '37
- International Relations, '37; Secretary-Treasurer, '38
- House Committee, '38





L A U R E T A N U M

1 9 3 8 W



Jean Pickel

St. Louis, Missouri

B. S. in Chemistry
and Mathematics

The by-word of the Senior class is "Pick, do something about your hair."—but, we're led to believe the cowlicks have the best of her. Stupid parties satisfy Jean's craving, we hear she gives them herself. Forgive us, we mean the costumes are stupid, of course.

- Personnel Board, '37
- Lauretanum Staff, '37
- Student Government Board; Vice-President, '37
- Student Council, '36
- Class Basketball, '36, '37
- Class Volleyball, '37, '38
- Class Baseball, '37
- Loretto Players, '35, '36, '37
- Chemistry Club, '35, '36, '37; Vice-President, '38
- Mathematics-Physics Club, '35, '36, '37;
Vice-President, '38
- Class Secretary, '38
- Sodality, '35, '36, '37, '38
- C. S. M. C., '35, '36, '37, '38
- Le Cercle Francais, '35, '36





W E B S T E R C O L L E G E

Elizabeth Roehling

Webster Groves, Missouri

Ph. B. in Speech
and English



To strike the proper mood and get the most out of acting, 'Liz darts around in loud plaid slacks plus brown sweater and floating black veil. We wonder why it is she rates the kind of notes from a professor that can't be received until after her recital.

- Orchestra, '35, '36, '37, '38
- Choral Club, '35, '36, '37, '38
- Loretto Players, '35, '36, '37; President, '38
- Library Club, '36, '37
- Spanish Club, '35, '36; Secretary, '37
- Leo Moser Oratorical Contest, '35, '36, '37
- Debating, '35
- Vodvil, '35, '37, '38





L A U R E T A N U M

1 9 3 8



Ruth Savage

St. Louis, Missouri

Ph. B. in Speech
and French

Who has a passion for the actual feel of things—Ruthie, when she runs around in her stocking feet at dramatic practice. It comes out again in her craving for bargain counter struggles. She's always breaking up with the current man and then gloriously celebrating the reunion. But making-up is fun.

- Sodality, '35, '36, '37, '38
- C. S. M. C., '35, '36, '37, '38
- Class President, '37
- Student Government Board, '37
- President of Student Government, '38
- Loretto Players, '35, '36; Vice-President, '37, '38
- Vodvil, '35, '36, '37, '38
- Class Volleyball, '37
- Class Basketball, '37
- Le Cercle Francais, '35, '36, '37
- May Day Maid, '36
- St. Louis University Prom Maid, '38
- Freshmen Personnel Board, '37
- Acting Retiring May Queen, '38
- S. S. C., '38
- Biology Club, '36





8

W E B S T E R C O L L E G E

Mary Slechticky

Ava, Illinois

Ph. B. in English
and History



Title of "most helpful" goes to the girl with the unpronounceable name, who has varied interests, ranging all the way from song sheets to the latest in shampoo's. Ava better replenish its supply of shampoo for this Senior believes in letting the blonde tresses show to their best advantage.

- Sodality, '35, '36, '37, '38
- C. S. M. C., '35, '36, '37, '38
- S. S. C., '38
- Spanish Club, '35, '36
- Biology Club, '36
- Poetry Club, '38





L A U R E T A N U M

1 9 3 8



Rheta Stinson

Webster Groves, Missouri

Ph. B. in History
and English

"Do you want to buy a chance"
Stinson is always rushing some-
where, but getting nowhere fast,
unless it's to a bridge table, for
she's mad about the game. When
it comes to nick-naming people,
we give her a certified grade "A"
for she calls her heart's desire
Fussbuttons.

Le Cercle Francais, '35
International Relations, '37; Vice-President, '38
Personnel Librarian, '37
Library Club; Vice-President, '35;
Secretary-Treasurer, '36, '37
Loretine Staff, '38
Debating, '35





Barbara Vette

Kansas City, Missouri

A. B. in English
and History



Bab's could be a track star from the amount of practice she gets in 50 yd. dashes for the telephone when it rings. Watch out, we'll tap the line some day. The telephone man has competition but he needn't worry since a Roman collar makes the other heart's desire unattainable.

- Student Council Representative, '35, '36
- Class Treasurer, '37
- Web Staff, Circulation Manager, '37;
- Business Manager, '38
- Vodvil, '35, '36, '37; Business Manager, '38
- Lauretanum Staff, '37
- Press Club, '35, '36, '37
- Biology Club, '36
- Athletic Association, '35; Treasurer, '36, '37
- Athletic Association President, '38
- Varsity Basketball, '35, '36, '37; Captain, '38
- Class Basketball; Captain, '35, '36, '37, '38
- Class Baseball, '35, '36, '37, '38
- Class Volleyball; Captain, '35, '36, '37, '38
- Tennis Doubles Champion, '37
- Library Club, '36
- Choral Club, '35





L A U R E T A N U M

1 9 3 8



Doris Volz

Metamora, Illinois

A. B. in English
and History

The mystery woman of the Senior class gazes dreamily through her lectures upon the atmosphere of Missouri. It may have the same zest as that of Illinois, but she still wants to go home. Is she as conscientious in regard to her studies as she is where her steady is concerned?

Sodality, '35, '36, '37, '38
C. S. M. C., '35, '36, '37, '38
Library Club, '35, '36, '37
Choral Club, '37
Poetry Club, '36
Le Cercle Francais, '36





W E B S T E R C O L L E G E

Mary Frances Walsh

St. Louis, Missouri

B. S. in Chemistry
and Mathematics



It isn't hard to understand why young men—blonds in particular—never object to waiting for hours for this black-eyed Susan. Not only is she tops in tumbling, but she's tops in the hearts of practicing dramatic students across the hall on Tuesday afternoons when the Dietetics Department goes to work.

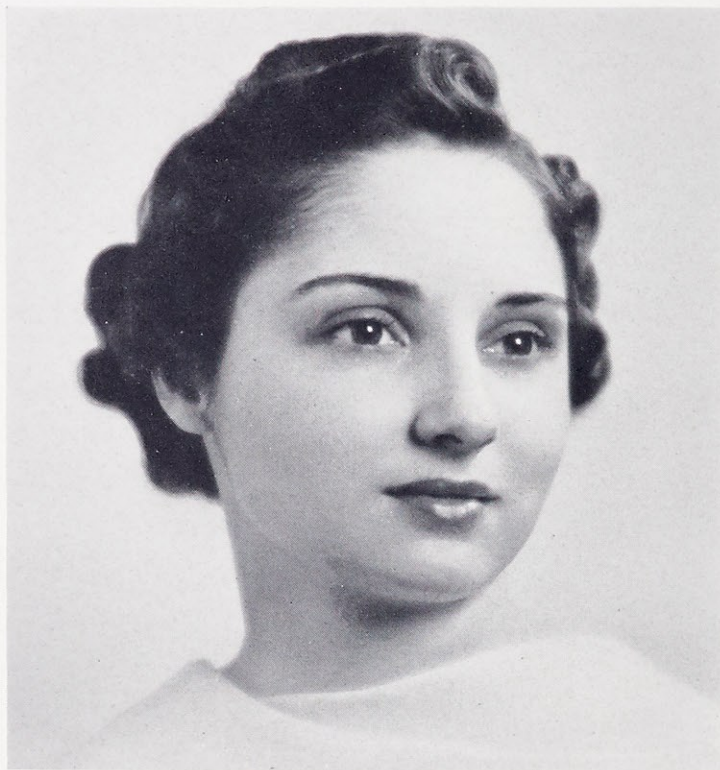
- Vodvil, '35, '36, '37, '38
- Cheerleader, '36, '37, '38
- Class Baseball, '35, '36, '37
- Class Basketball, '35, '36, '37
- Class Volleyball, '35, '36, '37, '38
- Lauretanum; Business Manager, '37
- Chemistry Club, '35, '36, '37, '38
- Mathematics Club, '35, '36, '37; President, '38
- Class Secretary, '35
- May Day Maid, '35
- Sodality, '35, '36, '37, '38
- C. S. M. C., '35, '36, '37, '38
- Le Cercle Francais, '36
- Personnel Advisory Board, '38





L A U R E T A N U M

1 9 3 8



Kathlyn Madelyn Whitener

Fredericktown, Missouri

B. S. in Music

She's in again, Whitener and her sense of humor. Most people think she plays the piano beautifully, but we know a certain professor who asked Madelyn if she played or tuned it. We understand she devotes her nights to different methods of deviling—either sign-collecting or generally annoying the public.

Music Guild, '34, '36, '37; President, '38
 Sodality, '34, '36, '37, '38
 C. S. M. C., '34, '36, '37, '38
 Orchestra; Student Conductor, '34; Accompanist, '36
 Choral Club, '34, '36
 Athletic Association, '34, '36, '37, '38
 Short Story Club, '36, '37, '38
 Poetry Club, '37, '38
 Loretine Staff, '37
 Web Staff; Assistant Editor, '37
 Vodvil, '34; Music Chairman, '36, '37, '38
 Social Problems Club, '36, '37
 Le Cercle Francais, '34, '36





W E B S T E R C O L L E G E

Lenore O'Connor

St. Louis, Missouri

Special



We know this pearly teeth'd girl is someday going to be city champ at the rate she's hitting the little white ball. But shame on you for still coming to cooking school after you got your mannie. Now that you have his heart why worry about the rest of the proverb.

- Sodality, '35, '36, '37, '38
- C. S. M. C., '35, '36, '37, '38
- May Day Queen, '37
- Vodvil; Dance Director, '35, '36, '37, '38
- Music Guild, '35, '36, '37
- Le Cercle Francais, '35, '36, '37





Juniors



R. Madden, D. Pauley, D. Rogles, M. Casey
N. Hunter, E. Merkel, M. Byrne, V. Mortland

ROSEMARY BOEHM
St. Louis, Missouri

AGNES BORGEL
St. Louis, Missouri

HELEN BUCKLEY
Macon, Missouri

MARY JANE BYRNE
St. Louis, Missouri

MARTHA CANTALIN
St. Louis, Missouri

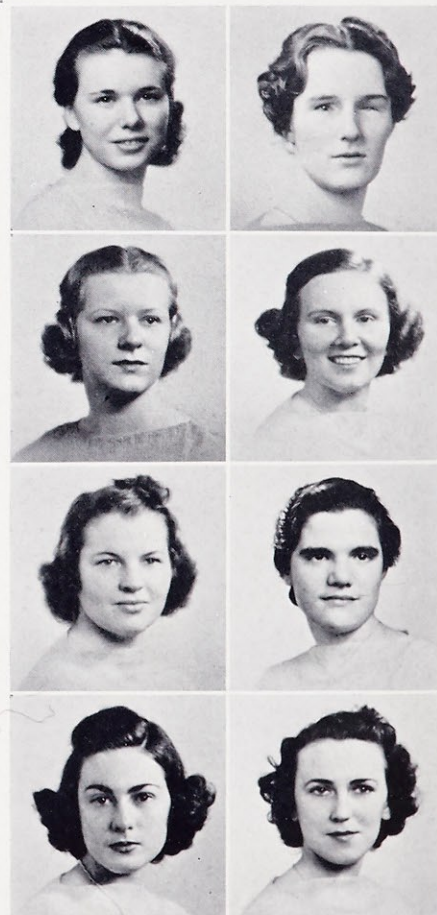
MARY VIRGINIA CASEY
Breese, Illinois

MARGARET CORRIGAN
Poplar Bluff, Missouri

MARCELLA DAILEY
Eureka, Missouri

HELEN DAY
Hamburg, Illinois

MARY ELIZABETH FLYNN
St. Louis, Missouri



M. Cantalin, G. Hogan
F. Martinek, H. Day
M. Flynn, F. Herre
R. Boehm, M. Dailey



W E B S T E R C O L L E G E

JEAN GILLESPIE
Kirkwood, Missouri

DOROTHY HENDERSON
Webster Groves, Missouri

FLORENCE HERRE
St. Louis, Missouri

ISABEL HOBAN
East St. Louis, Illinois

GENEVIEVE HOGAN
St. Louis, Missouri

NELLIE EARL HUNTER
Cassville, Missouri

REGINA MADDEN
St. Louis, Missouri

FLORENCE MARTINEK
St. Louis, Missouri

ELEANOR MERKEL
St. Louis, Missouri

VICTORIA MORTLAND
Kirkwood, Missouri

JANE McFARLAND
St. Louis, Missouri

DOROTHY McGILLEN
Chicago, Illinois

KATHLEEN O'ROURKE
Webster Groves, Missouri

DEANNE PAULEY
St. Louis, Missouri

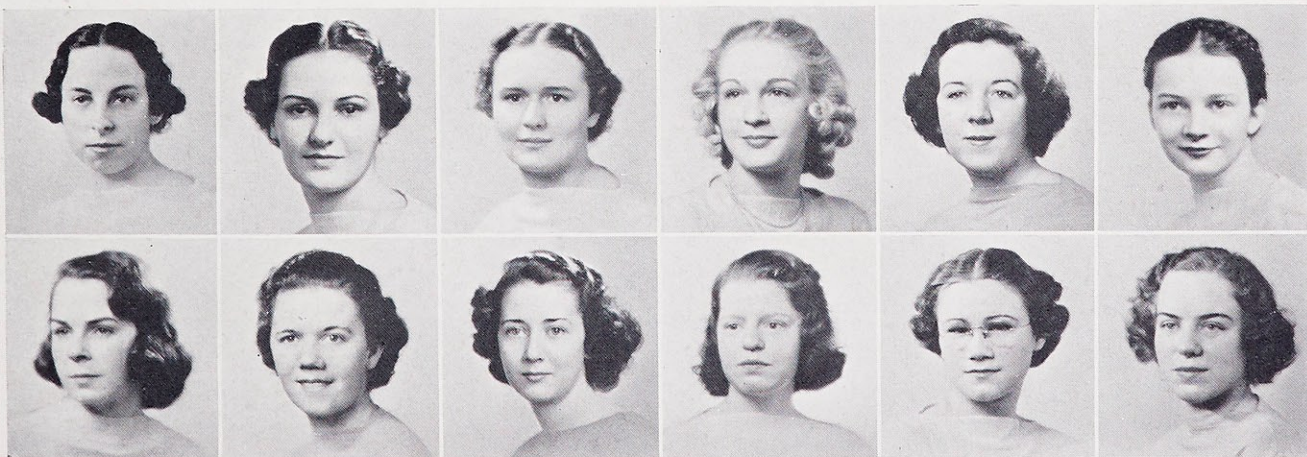
DORIS ROGLES
St. Louis, Missouri

BERNICE SCHLEICHER
St. Louis, Missouri

IDA SCHNEIDERHAHN
St. Louis, Missouri

EVELYN THORNTON
Clayton, Missouri

MELBA SCHNEIDER—Special
St. Louis, Missouri



E. Thornton, D. McGillen, A. Borgel, M. Schneider, H. Buckley, M. Corrigan
J. Gillespie, J. McFarland, K. O'Rourke, B. Schleicher, I. Hoban, D. Henderson



L A U R E T A N U M

1 9 3 8

Sophomore



I. Smith, A. Ritch, M. Koenitz
P. Higgins, J. Raftery, D. McKinlay

NATALIE ALLISON
University City, Missouri

JANE BARRETT
Webster Groves, Missouri

FLORENCE BAXTER
Brentwood, Missouri

MARJORIE BELT
Webster Groves, Missouri

BETTY BONEAU
St. Louis, Missouri

LORETTA CORBETT
St. Louis, Missouri

PATRICIA COSTELLO
St. Louis, Missouri

MILDRED DANIELS
Santa Fe, New Mexico

JANE DENNY
Richmond Hts., Missouri

VIRGINIA ANN DRISCOLL
El Paso, Texas

MARY GALBRAITH
Anniston, Alabama

HELEN GRAHAM
University City, Missouri



M. Perkinson, P. Costello
B. Boneau, J. Barrett
F. Rothermick, L. Kegriss
M. Jones, M. Daniels



W E B S T E R C O L L E G E

DOROTHY GHIO
St. Louis, Missouri

PATRICIA HIGGINS
Webster Groves, Missouri

MARY ELIZ. HOFFMEISTER
St. Louis, Missouri

MARY JANE HOULIHAN
St. Louis, Missouri

MARY LOUISE HYDE
St. Louis, Missouri

ROBERTA IRWIN
Summitville, Ohio

MARY COURTNEY JONES
Clanton, Alabama

LORETTO KEGRIS
Warren, Arizona

MARY F. KNOEDELSEDER
St. Louis, Missouri

MARY MARGARET KOENITZ
St. Louis, Missouri

VIRGINIA LEICHT
St. Louis, Missouri

MARJORIE McDONALD
Louisville, Kentucky

DOROTHY McKINLAY
Webster Groves, Missouri

BEATRICE PEREZ
Kirkwood, Missouri

MARY RITA PERKINSON
St. Louis, Missouri

MILDRED PETERS
Florissant, Missouri

ELIZABETH POLLMANN
St. Louis, Missouri

JOSEPHINE RAFTERY
St. Louis, Missouri

ANN RITCH
St. Louis, Missouri

MARY MARTHA RITTER
Louisville, Kentucky

FRANCES ROTHERMICH
Ferguson, Missouri

MARY ROSALIE SHERIDAN
St. Louis, Missouri

IDELLA SMITH
Union City, New Jersey

MARION WARE
St. Louis, Missouri

SUZANNE WEBER
Olney, Illinois



M. Houlihan, B. Perez, M. Knoedelseder, V. Leicht, M. Peters, M. Hoffmeister, M. Ware
F. Baxter, V. Driscoll, M. Sheridan, M. Hyde, M. Ritter, M. Galbraith, R. Irwin
E. Pollmann, J. Denny, D. Ghio, L. Corbett, M. Belt, H. Graham, N. Allison



Freshmen



E. Yock, R. Frick, B. Mannion, B. Biederman
M. Scott, H. Knapp, M. Mahoney, B. Hellinghausen
D. Schwalbe, A. Ryburn, G. Holden, F. Larson

CECILIA ALLHOLF
St. Louis, Missouri

JANE BATHE
St. Louis, Missouri

BARBARA BIEDERMAN
Kansas City, Missouri

JEAN BRODERICK
Colorado Springs, Colorado

JANE BUDKE
Clayton, Missouri

BETSY CASEY
St. Louis, Missouri

BETTY COAD
St. Louis, Missouri

EDNA MAE DENNIS
Valley Park, Missouri

DOROTHY DEPOSKI
St. Louis, Missouri

ANNA MARIE DEVINE
Sterling, Illinois

MARY DOCKERY
St. Louis, Missouri

THELMA DUDENHOEFFER
St. Louis, Missouri

DORIS ENRIGHT
Sterling, Illinois

MARY JANE FREMON
St. Louis, Missouri

ROSE MARIE FRICK
Kansas City, Missouri

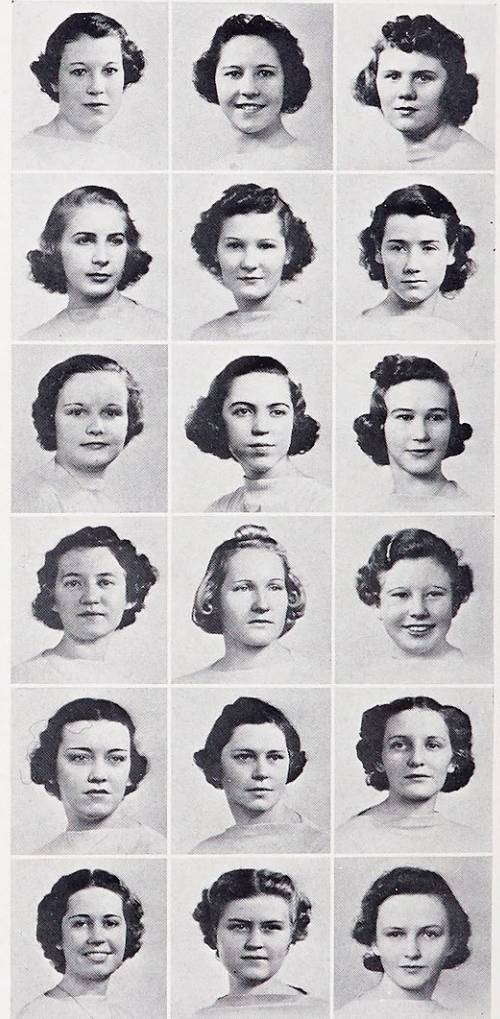
ELIZABETH FURI
St. Louis, Missouri

PATRICIA GALLAGHER
Special
St. Louis, Missouri

ENGENIE HARTER
St. Louis, Missouri

BETTY HELLINGHAUSEN
Breckenridge, Texas

MARY LOU HENSGEN
Normandy, Missouri



N. Mooney, E. Dennis, J. Budke
R. Suliburk, T. Dudenhoeffer, C. Jurgensmeyer
M. McAuliffe, M. Dockery, G. Volz
M. Ksychi, G. Meder, C. Smith
D. Enright, D. Ottens, A. Sevier
M. Hensgen, C. Jacobsmeyer, P. Quick



W E B S T E R C O L L E G E

RITA HENTZEN
Kansas City, Kansas

ANN HOF
St. Louis, Missouri

GLORIA HOLDEN
St. Louis, Missouri

JANE HYDE
St. Louis, Missouri

CLARE JACOBSMEYER
Shrewsbury, Missouri

CLAIRE JURGENSMEYER
Macon, Missouri

HELENE KNAPP
St. Louis, Missouri

MARY ELIZABETH KSYCHI
Du Bois, Illinois

FRANCINE LARSON
Evansville, Indiana

GRACE MARIE MACK
St. Louis, Missouri

MARY VIRGINIA MAHONEY
St. Louis, Missouri

BETTY MANNION
St. Louis, Missouri

GLORIA MEDER
Kirkwood, Missouri

NELKA MOONEY
St. Louis, Missouri

MARY JANE McAULIFFE
St. Louis, Missouri

ELIZABETH McKENNY
King City, Missouri

DOROTHY OTTENS
St. Louis, Missouri

MARGARET QUICK
St. Louis, Missouri

JEAN RAYMOND
Kansas City, Missouri

EILEEN REID
St. Louis, Missouri

VIRGINIA RIEHEMANN
St. Louis, Missouri

ALYCE RYBURN
St. Louis, Missouri

RUTH RUMMELHART
Colorado Springs, Colorado

MARY SAVAGE
Monroe, Louisiana

DOROTHY SCHWALBE
St. Louis, Missouri

ANTOINETTE SCHWARZE
St. Louis, Missouri

MARY SCOTT
Sterling, Illinois

ANTOINETTE SEVIER
Miami, Florida

PATRICIA SHARPE
Denver, Colorado

CECELIA SMITH
St. Louis, Missouri

ROSEMARY SULIBURK
St. Louis, Missouri

MARGARET TOOMEY
Mobile, Alabama

MARGARET TRACY
St. Louis, Missouri

MARY LOUISE TRAVERS
University City, Missouri

ALINE TURNER
St. Louis, Missouri

GRACE VOLZ
Webster Groves, Missouri

ELIZABETH YOCK
Pekin, Illinois



A. Hof, V. Riehemann, E. Furi, D. Deposki, B. Casey, M. Savage, M. Toomey, J. Hyde
E. Reid, J. Broderick, E. McKenny, B. Coad, R. Rummelhart, A. Turner, P. Sharpe, J. Raymond
A. Devine, R. Hentzen, J. Harter, P. Gallagher, C. Allhoff, J. Bathe, A. Schwarze, M. Travers

Book Two

Socially

Webster girls go in for all activities one hundred per cent plus since they realize that books alone will not make a perfect day—we see included in their college life dining, dancing, acting and all those other things that give the zip and sparkle to a modern college education.

The age-old burning of midnight oil, years ago, was related only with the idea of poring over musty books and scribbling frantic thoughts. But today midnight oil burners cease to worry how Caesar conquered Gaul, instead they wonder how to get the most fun out of these hours. Since Webster girls are modern, they follow this formula and so we find them Socially Inclined.

Inclined





L A U R E T A N U M 1 9 3 8 W



P. Chamberlain
L. O'Connor
B. Vette

Vodvil

Football was predominant in the minds of Webster's lassies this year when they presented "We're Off." We saw coaches, time-keepers, announcers and water-boys on the field of the Little Theatre.

If we can judge Webster's college life from the team's performance, we know it is exciting from the first kick-off to the "Last Huddle" with Back-Wash College students romancing on "Frat House Porch" or shouting on "The Grand Stand." On their way to the "College Hangout," they pause for a moment at "Conservatory Hill." As the team drops in on the "Dress Rehearsal" of Back-Wash Ballet, we see a lovely bit of dancing. But our week-end draws to a close and "We're Off."

Vodvil Chairman—
Peggy Chamberlain
Dancing Dir. - Lenore O'Connor
Business Mgr. - Barbara Vette



8

W E B S T E R C O L L E G E

Athletic Association

The Athletic Association of Webster College is a far cry from the small, restricted organization formed in 1920. Since that time it has grown to be one of the largest, most active organizations in the school.

The Association has a full schedule of activities, which is followed with much interest and enthusiasm throughout the year. It consists of Volleyball in the fall, Basketball during the winter, and Track, Tennis, and Baseball in the spring. The crowning event of the season occurs in May with the Track meet and Banquet at which awards are given to classes and to individuals for outstanding work. The Association sponsors each year the High School Play Day for all Catholic girls' high schools.

OFFICERS

President	- -	Barbara Vette
Vice-President	-	Dorothy McGillen
Secretary	- -	Helen Buckley
Treasurer	- - -	Ann Ritch



B. Vette
 D. McGillen
 H. Buckley
 A. Ritch



L A U R E T A N U M

1 9 3 8

Web

Eighteen years ago a two-column mimeographed sheet called Listen, edited by the various classes, was distributed to the students of Webster College. Today as an outgrowth of Listen we have the Web. It is a five-column, six-page, semi-monthly publication, bearing the seal of the National Catholic Press Association. Through its exchanges the Web circulates in seventy or more Catholic Colleges throughout the country.

In addition to the usual news articles and special columns, the Web secures excellent scoops on school events. It is due to the skillful guidance of Mr. Hamilton Thornton, of the Globe-Democrat, instructor in journalism at Webster, that the Web owes the journalistic improvements and recognition it has achieved in recent years.

OFFICERS

Editor - - Jean Henning
 Asst. Editor - Evelyn Thornton
 Business Mgr. - Barbara Vette

Asso. Editors—
 Eleanor Merkel
 Margaret Corrigan, 1st sem.
 Marian Lower, 2nd sem.

Circulation Mgr.—
 Mary Rita Perkinson
 Athletics - Veronica Coad

Reporters—
 Marie Herr
 Dorothy Henderson
 Florence Baxter
 Rita Marie Hentzen
 Deanne Pauley



J. Henning, B. Vette
 M. Perkinson, E. Merkel, E. Thornton, M. Corrigan, V. Coad



W E B S T E R C O L L E G E

Loretine

OFFICERS

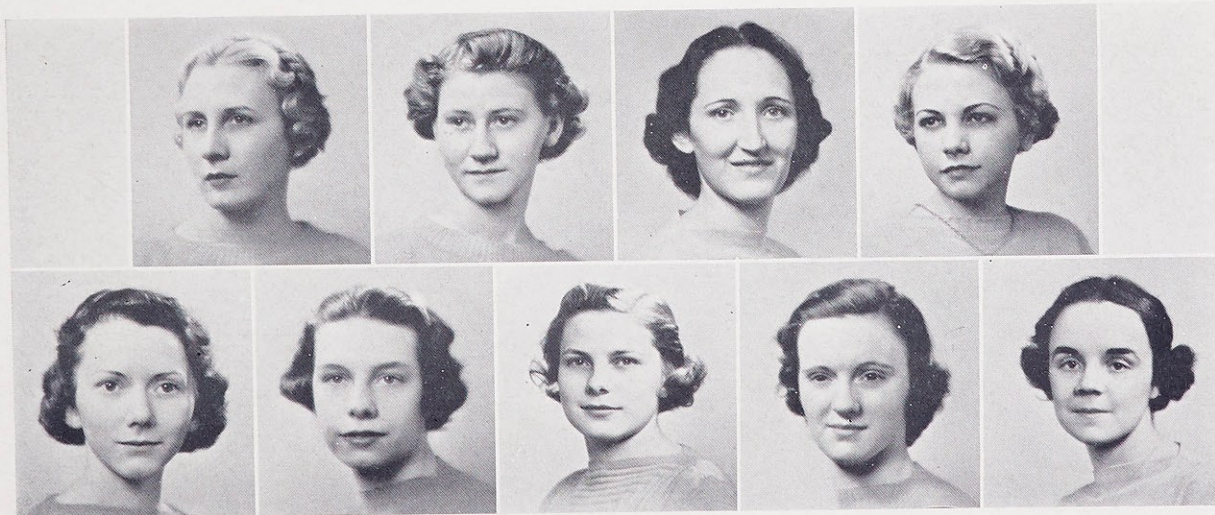
Editor - - Margaret Fink
 Business Mgr. - Marian Lower
 Art Editor - Ruth Hauser
 Circulation Manager—
 Mary Jane Dorsey

Reporters—

Theresa Buckler
 Peggy Gamp
 Rheta Stinson
 Mary Slechtiky
 Ruth Garizio

The Loretine is a literary quarterly, presented to Webster on its foundation in 1936, by Loretto Academy of Kansas City. In the first issue were published the Board of Governors, the Academy of the Gallery of Living Catholic authors, and the coat of arms designed by Pierce de Chaignon la Rose, of Boston.

Realizing the heroic sacrifices made by the Sisters of Loretto in China and their noble work and wishing to pay some tribute to them, the staff of the Loretine dedicated its second issue to these valiant women. Poetry was the main subject of the March issue. Included were the prize-winning poems in the Loretine Poetry Contest, and articles on the mysticism of the poetry of Thompson and Patmore.



M. Fink, M. Lower, M. Dorsey, R. Stinson
 R. Hauser, P. Gamp, M. Slechtiky, T. Buckler, R. Garizio



L A U R E T A N U M

1 9 3 8

Lauretanium

The Lauretanium Staff has tried, through this Yearbook, to catch and keep the very spirit of Webster College that in the coming years you may turn these pages and relive your college days. Throughout the entire year the thought that held first place in our minds was the coming date of May 23 and the opportunity of presenting our completed work to you. We are proud of it, as everyone is of her own brain child, and we sincerely hope it will mean as much to you.

The Publication Office was the stage on which our struggles were played, for many a long and tedious hour was spent there as this book grew from a vague dream to a thing of reality. Then publication seemed years away, but suddenly the dead-line was upon us and May 23 had arrived. We hope those hours have not been in vain and that you will treasure this Yearbook as we do.



V. Mortland, D. Rogles
D. Pauley, D. Henderson, J. McFarland



Cooperative Association

The Cooperative Store is one of the latest projects of the Sodality. The Cooperative Committee was started in September, 1936, and immediately began a detailed study of Consumer's Cooperatives, both in theory and practice. Father George MacDonald, S. J., of the Queen's Work Staff, spoke several times to acquaint the students with Cooperatives before the Store was opened in February, 1937.

The Cooperative Store is financed by fees the members pay for shares. Profits are paid out to the shareholders in proportion to the amount of their purchases. The principles underlying the Cooperative movement are the Rochdale Principles which were originated in Rochdale, England, and to which all true Cooperatives must conform. Thus Webster College tries an experiment in Christian business.

BOARD OF DIRECTORS

- President - Virginia Herre
- Vice-Pres. - Florence Herre
- Vice-Pres. - Martha Cantalin
- Secretary - Margaret Corrigan
- Treasurer - Marion Lower
- General Manager of
the Store - Margaret Fink



V. Herre, F. Herre, M. Cantalin
M. Corrigan, M. Lower, M. Fink



L A U R E T A N U M

1 9 3 8 W

Drum and Bugle Corps

This year Webster came to the front by adding another extra-curricula activity, The Drum and Bugle Corps. It is composed of members from the Freshman and Sophomore classes and is under the capable direction of Sister Mary Joecile and Mr. Harry Sprunk, who drill the girls in their various formations. February twenty-eighth was an important day at Webster, for the Corps made its formal debut at the regular Monday assembly. Like doting debutante's parents, the College girls stood in proud attention while the Corps, elegantly dressed in handsome gold and white uniforms, with Jane Denny as peppy, strutting Drum Major, went through their various formations.

The purpose of this organization is to perform at the different athletic activities, and to welcome dignitaries to Webster College. We were especially proud of our Corps at the Maryville-Webster basketball game, for, after going through their regular drill perfectly, the Corps' members climaxed their performance by forming an "M" and a "W".



M. Perkinson, P. Costello, M. Peters, M. Hoffmeister, F. Rothermick, D. Ghio, G. Holden, J. Raftery, J. Denny—Drum Major,
V. Leicht, B. Perez, L. Corbett, V. Riehemann, P. Quick, J. Bathe, H. Knapp, M. Ksychi



W E B S T E R C O L L E G E

Christmas Banquet

One of the very gayest social events of the year is always the Christmas Banquet to which the lay faculty and students are invited. Tradition more or less dictates the arrangements, such as the turkey dinner, the color scheme of green and red decorations, and a visit from Santa Claus. These customs, however, enhance more than hamper the joy and festivity of the evening. It is the new version of the old thing that appeals most and the Junior Class, hostesses for the Banquet, succeeded in making their version one of the most enjoyable.

The high-light of the Banquet, for the Seniors especially, is the presentation to them by Dr. Donovan, of the class pins. After the dinner in the Cafeteria the guests assemble in the Pink Room and are entertained while awaiting the arrival of Santa Claus. When that busy old gentleman finally comes he brings gifts for the faculty and for the babies of the school—the Freshmen.





L A U R E T A N U M 1 9 3 8

Prom

On Webster's social calendar the Spring and Fall Dances are red-letter dates. On May 7th, the Sophomore-Freshman dance was given in the Pink Room amid a festive Japanese setting. The Junior-Senior dance was held on the night of May Day adding a final splurge to the celebration.

The Fall Dance is a double red-letter date since it is the initial dance of the social season. This year it was given at Norwood Country Club on November 19th, where we swayed and "trucked" to Walter Wood's rhythmic band.

Now for the triple red-letter date, the annual Prom. This year's was held on January 27th at the Missouri Athletic Association. There we laid aside our cares, dancing gayly to Bennie Rader's smooth music and topped off the evening by doing the "Big Apple". Midnight came all too quickly and like Cinderella, the 1938 Prom had slipped away leaving many fond memories instead of a glass slipper.





W E B S T E R C O L L E G E

May Day

A lovely May Day is of itself inspirational. But May Day at Webster College is something that borders almost on the sublime. Last year on the afternoon of May 24th Miss Lenore O'Connor, a member of the Junior Class, was crowned Queen of our Court of Love and Beauty. In her Royal Court were the retiring Queen, Mary Frances Higgins and Maids representing the various classes: Senior: Ruth Crowe, Jane O'Donnell, and Gladys Wencker; Junior: Veronica Coad, Frances Delmore; Sophomore: Deanne Pauley, Kathleen O'Rourke; Freshman: Patricia Costello.

The Senior Class, carrying the traditional Daisy Chain, formed the guard of honor through which the Queen and her Court passed on the way to the throne. As a fitting climax to the ceremony, the Freshman May-Pole dance, a solo-dance, and an old-fashioned ballet entertained the royal court. After this the Queen and her attendants retired, thus bringing to a close another perfect Webster May Day.



How boring school would be with only lectures and notes, but organizations have saved the day. Webster realizing this has plentifully filled her curricula with many outside activities—thus we have our Co-organizations. Each department of the college is represented by a club that strives to outdo all others in its individual programs.

But this rivalry does not overshadow their main aim of working together for the betterment of Webster. Each student, anxious to add some fancy embroidery to the plain pattern of her daily class work, participates enthusiastically in the various organizations. Usually you will find that the girls are most interested in those organizations which are sponsored by their Major and Minor subjects.

Book Three

. . . Co =



organization



C. Klorer
V. Herre
F. Martinek
F. Baxter

Sodality

The Sodality of Our Lady aims to develop the spiritual side of the students by stressing personal holiness and active Catholicity. The seven committees of the Sodality have continued to function actively during the past year. The Webster College Sodality has taken part in the St. Louis Sodality Union. Together with the Corporate Colleges, Nursing School and Parish Sodalities, Webster helped to make a success of the Regional Convention held in St. Louis, March 19 and 20.

All acknowledge that with Sister Ethelbert as moderator and Carmen Klorer as Prefect, the Webster College Sodality has had one of its most successful years. Outstanding guest speakers were Rev. E. J. Kammer, C. M., Rev. Geo. McDonald, S. J., and Rev. Father Valentine, C. P.

OFFICERS

- President - - - Carmen Klorer
- Vice-President - Virginia Herre
- Secretary - Florence Martinek
- Treasurer - - - Florence Baxter



C. S. M. C.

The Catholic Student Mission Crusade under the title "Nancy Havern Mission Unit" is another extra-curricula activity sponsored by Webster College. Although it is considered a part of the Sodality of Our Lady, its objectives are quite distinct from those of that organization.

The purpose of the Unit is to promote among its members spiritual, financial and educational interests for Home and Foreign Missions. The Nancy Havern Unit, this year, aided the Loretto Sisters in Shanghai and Hon Yong and the Catholic University of Peking, as well as the poor in our own States. One of the most noteworthy activities has been the Catechetical instructions given to the negro children of various parishes in St. Louis by the girls of Webster College.

OFFICERS

- President - Elizabeth Pollmann
- Vice-President - Dorothy Ghio
- Secretary - - - Marie Herr
- Treasurer - - Dorothy Keeley



E. Pollmann
 D. Ghio
 M. Herr
 D. Keeley



L A U R E T A N U M 1 9 3 8

Student Government Association

The partial Student Government, which was introduced last year, has continued to achieve the purpose of the Student Association. This organization functions through the Student Government Board, an executive, legislative and judiciary body composed of the Dean of Women, Dean of Studies, and twelve students elected from the student body.

The duty of this Board is twofold; first, to sponsor the numerous social activities which form part of the school year, and, secondly, to decide any minor disciplinary problems that may arise.

The Student Government Board drew up during the past year a new constitution which was submitted first to the faculty for approval and then to the student body. This constitution will remain in force one year, at which time steps will be taken for its permanent adoption.

OFFICERS

President - Ruth Savage
 Vice-Pres. - Helen Buckley
 Secretary - Ruth Garizio
 Treasurer - Florence Martinek



R. Savage, J. Gillespie
 F. Martinek, M. Ritter, H. Buckley, T. Buckler, V. Coad
 D. Pauley, R. Garizio, A. Hof, M. Ware, C. Klorer



W E B S T E R C O L L E G E

Music Guild

On October 12, 1932, Webster adopted the Music Guild as another child of activity. Since that time it has grown into a full-fledged daughter boasting of great success. Under the capable and enthusiastic guidance of its moderator, Sister Mary Adaline, the Guild has carried on intense and interesting work.

This year the club studied modern music and DeBussy in particular. It presented the music library with recordings of Beethoven's First Symphony and on March 5, they gave a tea for Corrine Fredricks. In May, a program of original compositions was presented to which all members contributed either musical compositions or words for songs. The chief aim of the organization is to establish a music scholarship for the Webster Conservatory of Music and to create a more widespread interest in music.

OFFICERS

- President - Madelyn Whitener
- Vice-President - Ruth Garizio
- Sec'y-Treas. - Dorothy Keeley



M. Whitener, R. Garizio, D. Keeley, M. Galbraith
 D. Pauley, V. Driscoll, M. Herr, R. Hauser, R. Rummelhart
 A. Huneke, E. Yock, M. Dorsey, R. Hentzen, C. Allhoff



L A U R E T A N U M 1 9 3 8

Orchestra

The Webster College Orchestra, under the direction of Sister Mary Joecile, is composed of students interested in music. Since their aim is to make their organization as successful as possible, the members and their director spend much time and effort to reach this goal.

Besides appearing at each Monday assembly and accepting outside engagements, the orchestra plays for the Annual Lion's Club banquet held at the College, the Sunday Night Open Forum and the Conservatory recitals. In the Spring, the orchestra assists the Choral Club in the presentation of its musical program.

The personnel includes:

First Violin: Ruth Hauser, Cecilia Allhoff, Elizabeth Roehling, Bernice Schleicher.

Violoncello: Florence McKinlay.

Trumpet: Florence Martinek.

Piano: Ruth Rummelhart.

Second Violin: Loretto Kegriss, Dorothy McKinlay.

Clarinet: Elizabeth Yock, Clare Jurgensmeyer.

Bass Violin: Mary Jane Dorsey.

Drums: Mary Courtney Jones.

Conductor: Virginia Ann Driscoll.





W E B S T E R C O L L E G E

Choral Club

The tenth anniversary of the Webster College Choral Club was commemorated this year. Any student who wishes may try out for membership in this group. Meetings are held twice weekly, and only a certain number of cuts is allowed before a member is dropped. Snap and pep were keywords for the club when songs from the Broadway show, "Good News," were presented in the Student Vodvil. Late in November the spaghetti supper was given in the cafeteria for the members. Sister Mary Paula, director of the Choral Club, who is famous for her Italian spaghetti, prepared the dinner.

The St. Louis University Glee Club was entertained in February. During this month the members of the group sang at a combined meeting of the Optimists and Lion's Clubs of Webster Groves. At the closing concert of the Webster Conservatory, Handel's "Hallelujah" was presented, and a banquet, in honor of the Senior members, took place on May 13.



First row—V. Leicht, J. Barrett, D. Keeley, M. Peters, M. Corrigan, E. Reid, M. Koenitz, M. Perkinson, B. Biederman
 Second row—R. Hoing, M. Ksychi, M. McAuliffe, E. Roehling, L. Kegriz, A. Borgel, E. Merkel, M. Byrne, E. Yock, A. Sevier
 Third row—M. Savage, M. Jones, P. Quick, M. Belt, R. Garizio, B. Casey, A. Hof
 Fourth row—M. Travers, A. Devine, R. Rummelhart, M. Ware, R. Suliburk



L A U R E T A N U M 1 9 3 8

Le Cercle Francais

All students who are at present enrolled in French classes and those who have finished at least one year's college course in French are eligible for membership in Le Cercle Francais. The purpose of this organization is to furnish an opportunity for the discussion of French history, literature and customs.

The bi-monthly meetings of the club are conducted in French in order that the ability to write, understand, and speak the language may be perfected in each member. The native ability of Monsieur Bonnet, moderator of the club and the splendid cooperation of the members have contributed to make each meeting a success. Two of the most outstanding programs, however, were the presentation of the comical play, "La Farce du Chaudronnier," enacted by Mlles. Hauser, Buckler, and Gamp. The report on the "Legend of the Dipper," which was given by Mlle. Ware, followed by Monsieur Bonnet's interviewing Mlle. Francine Larson in French proved to be as interesting as it was informing.



First row—T. Buckler, M. Hoffmeister, L. Corbett, K. O'Rourke, J. McFarland, E. Thornton, R. Hauser, M. Knoedelseder, R. Hentzen, D. Ghio
 Second row—A. Schwarze, J. Raftery, M. Peters, M. Herr, M. Casey, E. Pollmann, A. Huneke, E. Yock, M. Flynn
 Third row—M. Jones, E. Leicht, M. Ritter, N. Mooney, M. Perkinson, A. Sevier, G. Holden, R. Rummelhart, M. Dorsey
 Fourth row—P. Quick, J. Bathe, V. Riehemann, F. Baxter, M. Corrigan, G. Hogan, M. Byrne, C. Jacobsmeyer, D. Ottens, E. Merkel
 Fifth row—M. Ware, J. Hyde, M. Hensgen, B. Perez, M. Belt, P. Gamp



W E B S T E R C O L L E G E

Classical Club

The year 1937-1938 marks the tenth anniversary of the existence of the Webster College Classical Club. This organization was founded under the name of Sigma Epsilon Rho, and its purpose is to create in the students an interest in Greek and Roman literature, daily life, customs and government. Latin and Greek majors and minors and all students who have completed first-year college work in the classics are members of the club.

The Webster Classical Club is allied with the St. Louis University Classical Club, and participates in the monthly meetings held at the University or at one of the Corporate Colleges. Webster had the pleasure of entertaining the combined clubs at a tea in February. As a special topic for its own individual meetings, the Webster Classical Club studied "Mythology." This subject has always been of interest to Classical students, since it is really one of the foundations upon which Greek and Roman literature was built.



First row—M. Peters, M. Knoedelseder, M. Godar, T. Buckler, P. Gamp, V. Leicht, M. Daniels
 Second row—R. Irwin, P. Costello, E. Pollmann, A. Ritch, F. Baxter, R. Hoing, M. Hyde
 Third row—M. Ware, C. Klorer, E. Thornton



L A U R E T A N U M 1 9 3 8

Chemistry Club

Sigma Phi Theta, or to be more explicit the Chemistry Club, is one of the important outgrowths of the Chemistry Department of Webster College. It is open to students and alumnae interested in the subject; the only provision made for entrance is that a member must have completed one year of study in Chemistry. The club gives its members an opportunity to gain information about the progress being made in the industrial and research fields of Chemistry.

Interest at the meetings this year was heightened by a scientific movie and a talk given by Dr. Griffith of St. Louis University Medical School. Various field trips were taken by the club for the purpose of studying Chemistry as it applied to the different industries. The final activity of the year was an all-day picnic at the Corley's summer home, a fitting ending for a most successful year.



First row—J. McFarland, M. Walsh, J. Pickel, B. Schleicher, M. Cantalin, D. Ghio, D. McKinlay, G. Holden
 Second row—M. Ksychi, M. Ritter, V. Riehemann, F. Herre, F. Martinek, V. Herre, V. Coad, E. Pollmann
 Third row—J. Bathe, H. Knapp, P. Quick, M. Hensgen, C. Jacobsmeyer, D. Ottens



W E B S T E R C O L L E G E

Spanish Club

The Spanish Club of Webster College, El Centro Hispanoamericano to its members, meets twice a month in the Spanish Room. The meetings are usually for the purpose of making a study of some interesting phase of Spanish or Mexican life. This year, however, with the Spanish War raging and the world Spanish-conscious, the club has made a study of the present conditions in Spain. The members have also devoted their time to the practice of speaking Spanish, possibly with the idea of visiting that country, but we hope they will wait until things become more normal.

One of the outstanding meetings of the year was the Spanish Supper held in May. This annual affair is eagerly anticipated during the entire year because of the beauty of the Spanish decorations, the charm of the entertainment and excellent quality of the characteristic food served. There is no Spanish student who does not look forward to May and the club meeting with keen delight.



First row—B. Coad, L. Kegriss, A. Ritch, M. Daniels, N. Allison, R. Hentzen, A. Sevier
 Second row—A. Hof, M. Galbraith, M. Toomey, P. Lynn, C. Klorer, I. Smith, R. Hauser
 Third row—I. Hoban, H. Graham, D. McGillen, M. Dailey



L A U R E T A N U M

1 9 3 8

International Relations Club

The International-Relations Club with Dr. George Francis Donovan, the director of the history department, as its moderator, has completed its second year of activity since its reorganization. The purpose of the club is to stimulate interest in history through the study of various books dealing with world-wide problems. Current topics have also been discussed at each monthly meeting.

The membership of this club is restricted to history majors. This limitation was thought advisable because of the amount of time that is required in preparation of the material for the meetings. Thus a student in this club must, of necessity, have as her primal interest, matters dealing with the field of International Relations.



First row—I. Hoban, P. Lynn, M. Lower, R. Stinson
Second row—D. McGillen, M. Casey, R. Madden, I. Smith, M. Daniels, E. Thornton



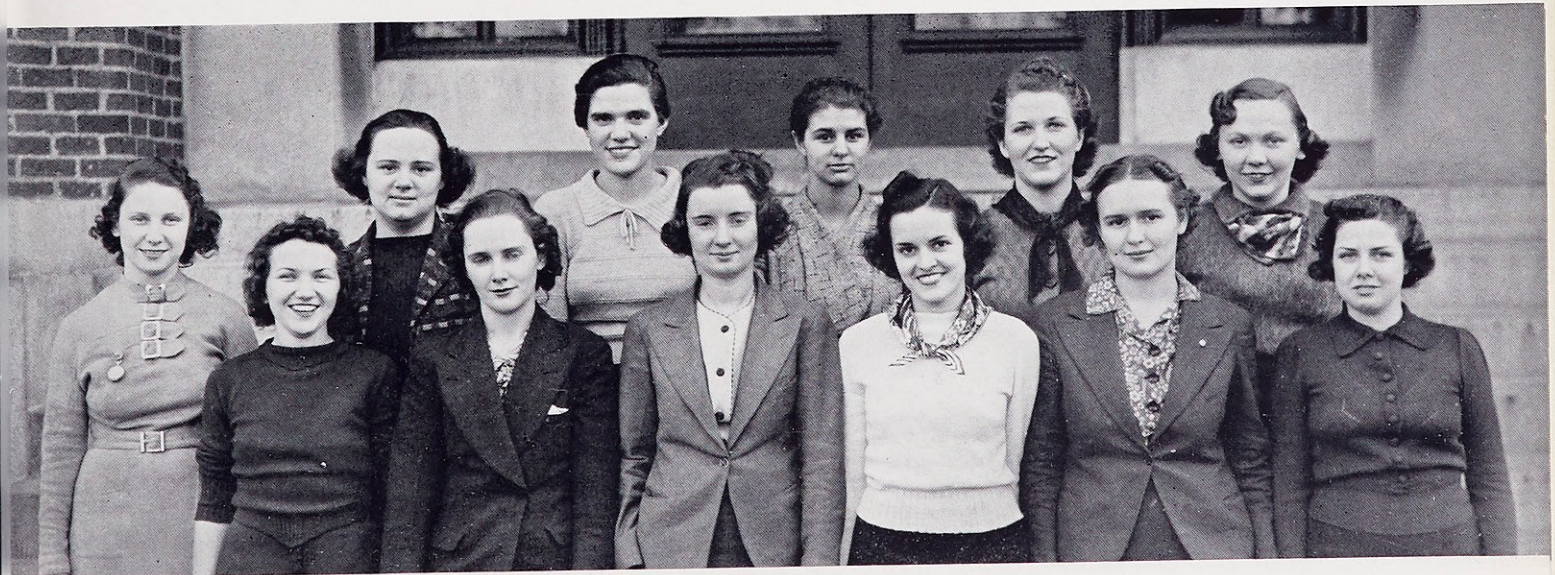
W E B S T E R C O L L E G E

Math-Physics Club

This club founded in 1927 with Sister Mary Borgia as moderator, was known then simply as the Mathematic Club. Four years ago, however, students in the physics department were admitted to the organization and the name was changed to the Math-Physics Club. Foremost among the many aims and objectives of the club is the desire to create in its members an interest in and a love for Mathematics and Physics. Furthermore, it tries to develop a knowledge of the cultural as well as the practical value of the two sciences and to train the students to express themselves with ease and precision, while discussing topics of scientific interest.

Perhaps the most interesting subject discussed at these meetings, held the first Wednesday of every month, was "Mathematics for the Millions."

The officers who were elected for this year include Mary Frances Walsh, the President; Jean Pickel, the Vice-President; and the combined office of Secretary and Treasurer, Agnes Borgel.



First row—M. Jones, M. Hoffmeister, L. Corbett, J. Pickel, M. Walsh, A. Borgel, D. McKinlay
Second row—M. Ritter, F. Herre, M. Peters, V. Coad, D. Rogles



L A U R E T A N U M

1 9 3 8

Short Story Club

Since its organization in 1932, the Short Story Club of Webster College, under the enthusiastic guidance of its moderator, Sister Mary Louise, has carried on an interesting program of activity. The purpose of the club is to study the short stories of great writers and to help cultivate the talent of the members in this field. At the meetings which are held bi-monthly, the short stories written by the members are read and criticized.

A change was made in the constitution this year which enables "anyone that is interested in the short story" to belong to the club; the responsive interest that resulted proved beyond a doubt the success of the organization. A Christmas dinner was held shortly before the Christmas vacation with Rev. E. J. Kammer, C. M., as honor guest. Alumnae members of the club were also present. At the meetings of the club "The Doll's House," "The Devil and Daniel Webster," and one of Daniel Steele's stories were reviewed.



First row—E. Thornton, M. Corrigan, M. Whitener, M. Dorsey, M. Herr, M. Casey
Second row—A. Huneke, M. Perkinson



W E B S T E R C O L L E G E

Poetry Club

Founded in 1927, the Poetry Club with Miss Mary Fregeau of the department of English, as moderator, has the distinction of being the oldest departmental activity at Webster College. The constitution of the club allows only twenty members and each year the senior members select a group possessing some ability for verse writing.

At each meeting original verse is submitted in answer to roll call. The program then follows with the reading of a short biography and selected poetry of the man to be studied. Finally, critical essays about the poet are presented in an attempt to evaluate his work and determine his place in literature. This year the club studied a number of modern poets, including Robinson, Lindsay, Leonard Feeney, S. J., Sister Madeleva and Oscar Wilde. In March the club sponsored an informal tea at which Rev. Louis Doyle, S. J., of St. Louis University, was honor guest. He discussed modern poets and playwrights.



First row—V. Mortland, M. Whitener, M. Casey, M. Herr, M. Slechticky
Second row—D. Volz, M. Corrigan, A. Huneke, G. Hogan, M. Dorsey



L A U R E T A N U M

1 9 3 8

Loretto Players

This year, the 20th anniversary of the Loretto Players has been an outstanding one. Under the capable direction of Mrs. Anna McClain Sankey, a resumé of classical dramas produced at Webster College in the past years, was presented under the title "Athens to Broadway." Again Portia, Mrs. Malaprop, Sister Joanna of the Cross and Antigone graced the College Little Theatre's stage and Puck foretold the future through television.

It is vain to sing the praises of the Loretto Players for they now rank among the leading amateur players in and about St. Louis. Their Shakespearean performances speak for themselves as was shown in this year's production of "Midsummer Night's Dream." They also attended the Dramatic Festival held at Missouri University.

OFFICERS

President - Elizabeth Roehling
 Vice-Pres. - Dorothy Henderson
 Sec'y-Treas. - Peggy Gamp



E. Roehling, D. Henderson, P. Gamp, H. Buckley, R. Boehm, V. Riehemann, M. Fink, M. Belt, D. Pauley, N. Hunter, R. Savage, J. Denny, F. Rothermich, B. Perez, P. Gallagher, J. Broderick, V. Mortland, P. Chamberlain, M. Koenitz, J. Rattery, R. Suliburk, M. Travers, R. Rummelhart



W E B S T E R C O L L E G E

Patrons

Mr. and Mrs. A. Cantalin
 Mr. and Mrs. Joseph V. Martinek
 Mr. and Mrs. J. J. Hoban
 Dr. and Mrs. Edw. P. Buddy
 Betty Buddy
 Miss Mary Alma Fregeau
 Misses Ida and Rose Schneiderhahn
 Dr. and Mrs. Frank Ritter
 Mr. and Mrs. L. H. Schleicher
 A Friend
 Moira Hayes
 Mr. and Mrs. John Merkel
 Mr. and Mrs. A. Roy Allison
 Mr. and Mrs. Robert J. Boehm
 Mr. and Mrs. Chas. Knoedelseder
 Dr. and Mrs. Nelson Wade
 Miss Celia McCue
 Miss Leola Michaels
 Virginia Riehemann
 Mr. Clifton I. Kast
 Mr. and Mrs. F. E. Riehemann
 Mr. E. E. Burke
 Mr. A. A. Gass
 Mr. and Mrs. H. H. Ottens
 Mr. and Mrs. A. C. Holden
 Mrs. E. Huber
 Mr. and Mrs. Leonard Perez
 Mrs. M. M. Reid
 Mr. and Mrs. J. A. Reid
 Mrs. William N. Larson
 Mr. and Mrs. Joseph F. Mahoney
 J. C. Hawkins Grocery Store
 Mary Elizabeth Ksycki
 Mr. John F. Casey
 Miss Martha Casey
 Mr. and Mrs. W. F. Madden
 Mr. and Mrs. H. Clay Henning
 Mrs. L. A. Bowlin
 Mr. and Mrs. A. C. Hoffmeister
 Mr. and Mrs. Bernard Rubeli
 Mr. and Mrs. Wm. T. Christmas
 Mr. and Mrs. G. H. McFarland
 Anna Marie Devine
 Mary Courtney Jones
 Doris Enright
 Marie Kientzy
 Mrs. W. S. Lower
 Mr. George L. Lower
 Miss Marian Lower
 Mr. and Mrs. Arthur A. Dockery
 A Friend

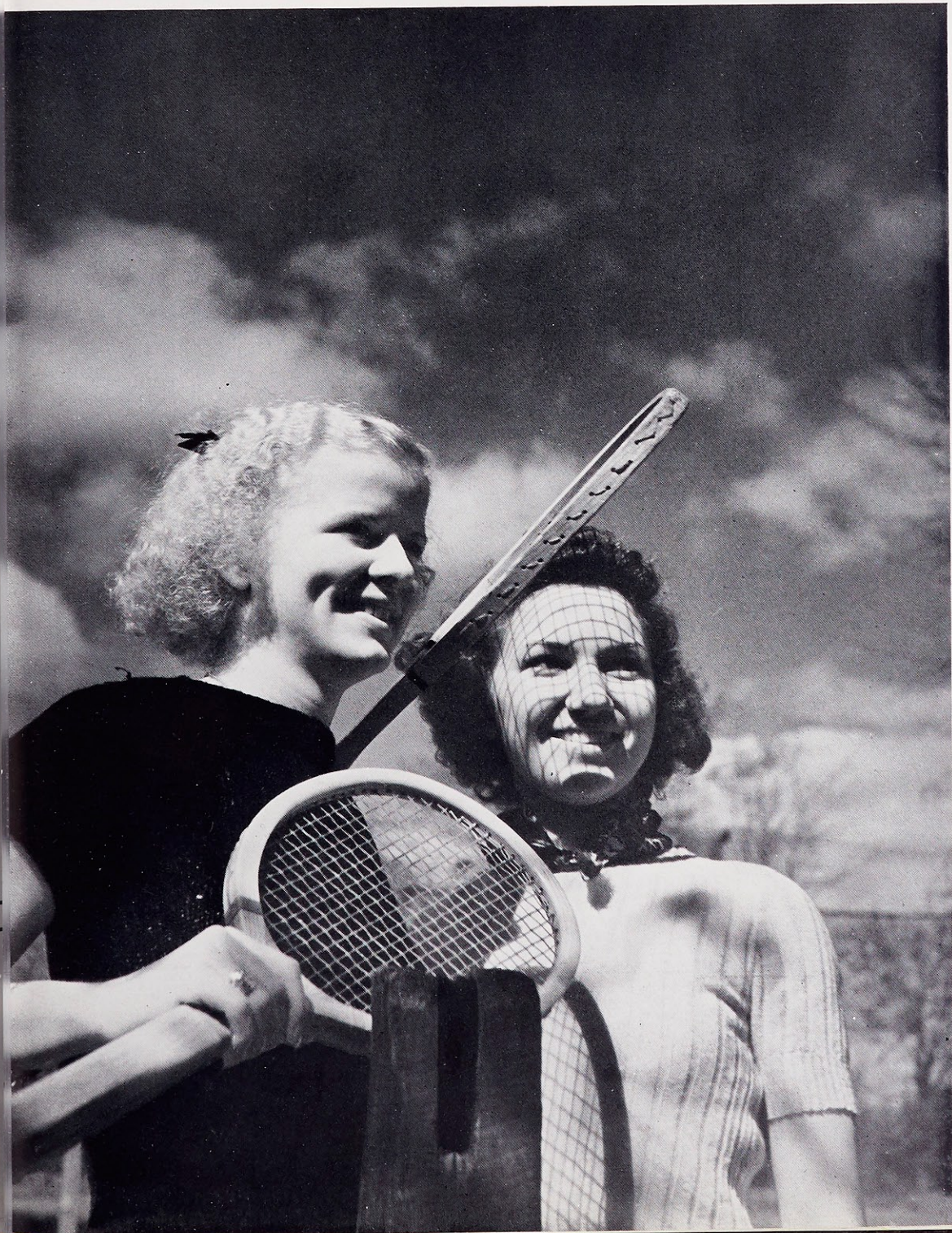
Mrs. F. X. Schwarze
 Mr. Wm. N. Larson, Sr.
 Mr. Wm. N. Larson, Jr.
 Mr. and Mrs. P. J. Keeley
 Mr. and Mrs. H. E. Mortland
 Mr. H. G. Mortland
 Victoria Mortland
 Miss Betty Miller
 Mr and Mrs. J. R. Knapp
 Miss Jean Raymond
 Junior Class
 Mary Savage
 Mr. and Mrs. F. L. Rogles
 Mr. and Mrs. Herbert Pauley
 Mr. and Mrs. David J. Hyde
 Mrs. F. Walsh
 Mr. Fred S. Henderson
 Senator and Mrs. Raleigh McCormick
 Mr. and Mrs. Roy J. Denny
 Dr. and Mrs. D. R. Donovan
 Mr. and Mrs. Thos. M. Stinson
 Mr. Robert W. Herr
 Mr. and Mrs. H. C. Herr
 Mr. and Mrs. J. I. Driscoll
 Mr. and Mrs. Edward J. Houlihan
 Mrs. A. Hogan
 Betty McGuire
 Dr. Mueller
 Mrs. Ellen Sheridan
 Mr. and Mrs. J. H. Savage
 Mr. and Mrs. J. A. Ryan
 Mr. and Mrs. J. H. Borgel
 Mr. and Mrs. F. J. Herre
 Mr. and Mrs. E. J. Corbett
 Mary Jane Fremon
 Mr. James Carrigan
 Marjorie McDonald
 Mr. and Mrs. L. M. Raftery
 Mrs. M. Pollmann
 Mr. and Mrs. Frank Dennis
 Mr. and Mrs. J. F. McKinney
 Mr. and Mrs. W. J. Deposki
 Mr. and Mrs. B. F. Graham
 Mr. and Mrs. W. G. Hellinghausen
 Mr. and Mrs. H. A. Ware
 Mrs. W. C. Ghio
 Margaret Fink
 Miss Elinore Ludden
 Rosemary Suliburk
 Dorothy McKinlay

Book Four

Active

Webster strives to keep her girls from becoming one-sided, or we could say two-sided, such as Intellectual geni and Social climbers—but realizes the worthwhile value of Active Competition. Ranking as important as the polished and active mind is a strong and active body, for we see that where physical development is concerned, the chair-warmers in stuffy rooms accomplish little—it takes active participation in sports, even though it may mean bench-warming for the first year. Some, unfortunately, cannot go in for athletics, but through the active competition in sports they learn, along with the rest, how to be good losers as well as good winners.

e Competition





Basketball

The basketball games played by the Varsity always find Websterites in a state of excitement and ready to support their team in victory or defeat.

Webster opened the season by playing Fontbonne, February 18, with the score of 22-19. The St. Louis Hockey Club visited Webster on February 25 and again a Webster victory with the score 29-19. Then the next week, March 4, Webster received her first defeat this year from Fontbonne, 11-9. On March 11, the highlight of the season, Webster played her traditional rival, Maryville. When the final whistle blew amid the din of shouting spectators, the score was in favor of Webster 17-15. The St. Louis Hockey Club returned March 18 but Webster defeated them, 14-12. The last game which Webster played against Maryville ended with Webster ahead, 12-7.

Four seniors heard themselves cheered for the last time as a farewell. They were Captain Barbara Vette, Theresa Buckler, Carmen Klorer, and Veronica Coad.



G. Meder, F. Baxter, T. Buckler, J. Hyde, E. Reid
D. McKinlay, A. Ritch, B. Vette, M. Hyde, V. Coad
E. Pollmann, C. Jurgensmeyer, C. Klorer

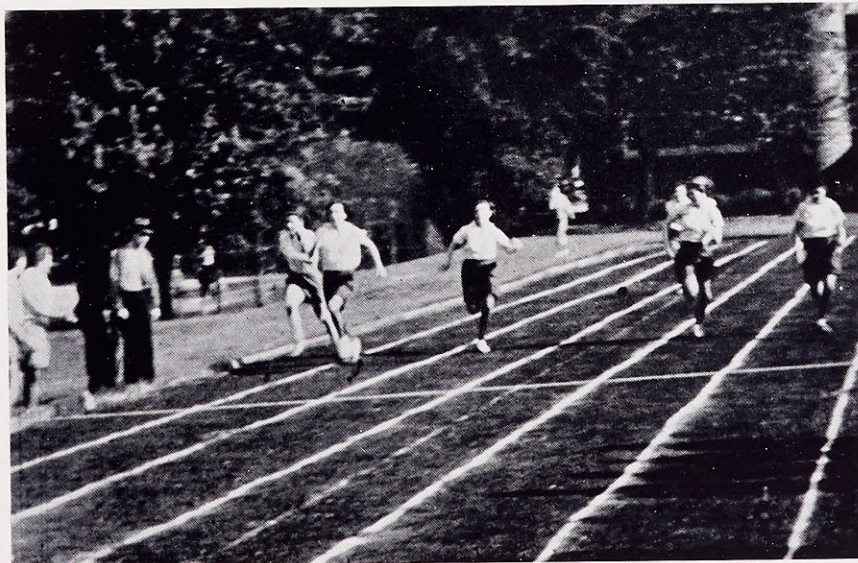


W E B S T E R C O L L E G E

Track

The athletic season closes each year at Webster College with the traditional Field Day, at which the Track Meet is the principal event. Anyone may enter and many girls who have not played basketball or volleyball during the year have an opportunity to show what they can do in the field of athletics. The first event is the baseball game, which decides the winner of the Class Tournament. Attention is then turned to the running of the fifty-yard dash, which formally opens the track events. From this point on, the spectators are kept busy moving from one spot to another, for there is much to be seen—the baseball and basketball throws, the seventy-five-yard dash, the standing broad, running broad, and high jumps, and, finally, the relay.

The climax of Field Day is reached in the evening with the Athletic Banquet. Faculty and students attend and join in the general noise of shouting and applause as the various athletic awards are presented.





L A U R E T A N U M

1 9 3 8

The Competitive Season

The official sports year at Webster College begins in early Fall with the first workout in Volleyball. Much joking and friendly competition is present at each and every practice; however, when November breezes blow, a seriousness begins to creep in. It's time for the inter-class tournament in which each class strenuously tries to win the coveted honor. This year the Sophomore team defeated the Seniors in the first game of the season and the Freshmen defeated the Juniors after a hard won battle. The Freshmen and Sophomores were left to battle for the title and after much practice, the Sophomores defeated the hard-fighting Freshmen. Thus the Volleyball season closes and Baseball begins.

As in the past, Baseball continues to be one of the most popular sports at Webster. The reason may be that it is the national pastime. But, whatever the reason, the fact remains that when the call for baseball candidates goes out in the Spring, it is answered enthusiastically by a great number of girls, each eager to show her ability as a player. Softball is the form of baseball played here, but this does not decrease hard playing for competition is keen and each girl wants her class to come out on top. The Inter-class Tournament begins after a few weeks of practicing, and the finals are played on Field Day. Last year the season ended with the Freshmen victorious. One Freshman also received the coveted baseball sweater.

As soon as the rainy season ends, the tennis court is rolled and prepared for the coming Tennis Tournament. This preparation is done hurriedly, for playing is crowded into the free periods between classes, and as the slogan "first come, first served" is applicable here, there is always a rush for the court. After a few weeks of practice the Tournament begins with both singles and doubles. As the end of the season draws near the eliminations reach the semi-finals and finals. Last year the finals found Gertrude O'Rourke, '37, victor of the singles, with Veronica Coad and Barbara Vette as winners of the doubles.



8

W E B S T E R C O L L E G E

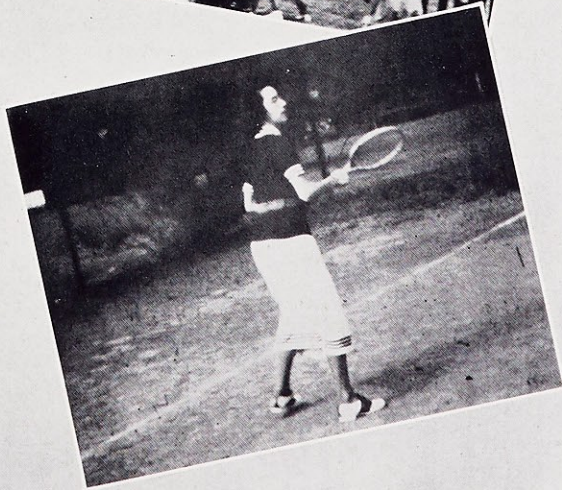
BASEBALL



VOLLEY BALL



TENNIS





L A U R E T A N U M

1 9 3 8





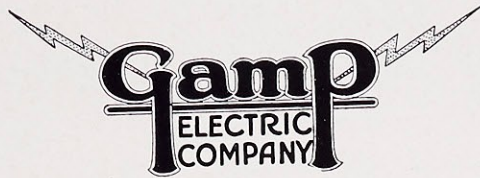
8

W E B S T E R C O L L E G E



SPONSOR LISTING

Dr. Gray Jones
Arthur W. Westrup, M. D.
Dr. Frank P. Gaunt
Central Engraving Company
Dr. V. P. Blair
C. B. McGee
Curtis W. McGee
Drs. Goodrich and Gaston
Dr. W. K. Mueller
Dr. V. H. Laager
William Alexander Smith, M. D.
Dr. C. J. Vollmar
Dr. Earl L. Brand
Mooreland Realty Co.
Dr. Alvin E. Vitt
Dr. R. H. Williams
Frank Hartmann



Distributors of

**KELVINATOR AIR CONDITIONING
KELVINATOR ROOM COOLERS
BUFF FORGES ATTIC FANS
KELVIN HOMES**

Electric Contracting in All Its Phases

2924 Locust St.

St. Louis, Mo.

DR. WILLIAM P. ALSPACH
OSTEOPATHIC PHYSICIAN
and SURGEON

Announces

The Opening of His Office

at

142-A EAST LOCKWOOD
(Corner Plant and Lockwood)

WEbster 3376

Compliments of

B. Herder Book Co.

17 S. Broadway



Compliments of

N. J. CULLINANE



Compliments of

DELMAR GIFT SHOP

M. Froehlich

6217 Delmar Blvd.

CABany 7784

•
COMPLIMENTS
OF A
FRIEND
•

Baker Refrigerating, Ice Making and
Air Conditioning Equipment

R. H. TAIT & SONS CORP.
ENGINEERS

813 Hempstead Street

Central 9700

St. Louis, Mo.

Compliments of

**Dorr & Zeller
Catering Co.**

DeBaliviere and Waterman

•
Compliments of
A FRIEND
•

•
COMPLIMENTS
OF A
A FRIEND
•

SALES, REPAIRS, SERVICE
Repairs for All Overhead Door Closers

Phone, Central 2691

D. A. BELL CO.

D. A. BELL Dealers in C. L. BELL
DOOR CLOSERS

Only Exclusive Door Closers Repairmen
in the City

824 N. 18th St.

St. Louis, Mo.

Compliments of

**BREAD DRIVERS', SALESMEN
AND HELPERS' UNION**

Day and Evening Classes
Individual and Group Instruction
Positions Secured for Graduates
•

Literature Mailed Upon Request
Call PRospect 4422

Saint Louis Business College
Gravois and Jefferson

Best Wishes From

COOK PAINT & VARNISH CO.

4465 Manchester

BRANCH OFFICES IN PRINCIPAL CITIES

Compliments of

WESTERN BLOW PIPE CO.

2528 S. 7th St.

Compliments of

E. F. MARSH CO.

4030 Chouteau Ave.

ST. LOUIS, MO.

● When in need of Venetian
Blinds or Window Shades

Phone

EDW. C. BRADY

SURE GRIP SHADE CO.

3881 Bell Ave. JE. 9716

FOrest 7188

MARGARET GROH

Art Monogram Shop

4734 McPherson Avenue

St. Louis, Mo.

Compliments of

Robbins Jewelry Co.

3rd Floor Arcade Building

Olive at Eighth

Compliments of

ANCHOR POST FENCE CO.

Herbert Golterman

Louderman Bldg.

H. L. McKELFRESH, Representing

E. R. MOORE CO.

Headquarters for Caps and Gowns, School Apparel

203 NORTH TENTH STREET

CHestnut 9043

•

H. J. Walters Quality Market

7353 Dale

Compliments of

St. Anthony's Hospital

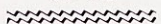
Compliments of

OLD BEN COAL CO.

702 Continental Bldg.

FOR QUALITY

Send
it to



3 Phones
NEwstead 0730



Trade Mark Reg.

Manchester
at
Kingshighway

We do business by this creed—

Satisfaction Guaranteed

COMPLIMENTS

of

**EMIL FREI
GLASS CO.**

WALTER WEIR, INC.

Complete Service Station

Mobilgas—Mobiloil—Mobilgrease
Road Service—Tires—Batteries—Car Washing

Telephone WEBster 66

Big Bend and Elm Ave.

WEBSTER GROVES

MARIAN THOMPSON

Smart Hats

554 Limit Ave.

CAbany 8925

Compliments of

LESTON MAYONNAISE

★

A FRIEND

★

Compliments of

W. F. O'MALLEY, M. D.

**Green Lea
Ice Cream Shoppe**

Famous for Malts
AND FANCY ICE CREAM

•
Call WEBster 3018

**RAY'S PHOTO
SHOP**

★
11 S. Gray

PHOTOGRAPHS

Commercial and Studio

Anton J. Nolte

3434 Osage St.
Riverside 0782

ORCUTT COMPANY

625 Harvard Ave.
UNIVERSITY CITY, MO.

•
Moving - Storage - Shipping
Agents, Allied Van Lines

Compliments of
**Lambert Bottling
Equipment
Co.**

3615 Olive St.

JEfferson 2660

Laundry Dryer & Heating Co.

Direct Motor Driven, Gas Heated and Steam

Laundry Machinery and Appliances

3142 Olive Street

JAMES K. KIDD, *Manager*
SAINT LOUIS

FLORENCE DRESS SHOPS

Florence Thompson

111 W. Lockwood
Webster Groves

Euclid and Laclede 4949 Delmar

Compliments of
PRENDERGAST LUMBER CO.

826 Cass Ave.

Compliments of
ST. LOUIS BELL FOUNDRY

2735 Lyon

GOODWIN'S FRESH FOOD MART

627 E. Big Bend

REpublic 1467

Compliments of
WOLFF PIPE & IRON CO.

Second and Tyler Sts.

Clarke-Gabler, Inc.
Opticians

•
522 N. Grand

FRanklin 8756 Permanent Waving
HEIGHTS BEAUTY SHOP
Beauty Culture in All Lines
Open Until 7 P. M. Thursday and
Saturday Evenings
204 N. VANDEVETER

LAclede 2755 LAclede 2756
Kingshighway Feed Co.
Wholesale and Retail Dealers in
HAY, GRAIN AND MILL FEED
3208 S. Kingshighway Blvd.
Chas. Meuser, Mgr. St. Louis, Mo.

GRand 0689 Open Evenings

The Adline, Inc.
DRESSES - COATS - FURS
2314 South Broadway
St. Louis, Mo.

H. GEISLINGER
Successor to Brener & Co.
MANUFACTURING JEWELER
Diamond Setters and Engravers
502 ORIEL BUILDING—316 N. 6th St.
6th and Locust Streets
CEntral 9350 St. Louis, Mo.

BE ALIVE, drink . . .



12 ounces, 5c

Central Brass & Aluminum Foundry
Non-Ferrous Metal Castings
503 South Twenty-first St.
St. Louis, Mo.

F. T. O'HARE, Owner GARfield 2991

**LEADER UPHOLSTERING
AND FURNITURE CO.**

Walter A. Reichert, Prop.

•
6806 Clayton Ave. St. Louis, Mo.

Compliments of
DEAN SISTERS

•
Clayton and Lindbergh Rds.

*Good Luck,
Webster College*

JOE GARAVELLI

●
5701 DeGiverville

LONG-HAIRED DACHSHUNDS

*The Only Breeder of These Beautiful Dogs
in St. Louis*

MRS. C. WISSMANN

Puppies for Sale—Telephone, LAclede 1725
3645 Louisiana Ave. St. Louis, Mo.

Hiland 4300

H. J. WALTERS
Quality Food Store

7353-55 DALE AVENUE
Richmond Heights, Mo.

EMIL WACKER, Pres.
CLARENCE WACKER, Vice-Pres.
FRANK KUNDA, Sec'y.
EMIL WACKER, JR., Treas.

WACKER-HELDERLE
Undertaking & Livery Co.

Chapel:
3634 Gravois Ave.—LAclede 7575—LAclede 3634
Chapel:
2331-37 S. Broadway—GRand 2116—GRand 2117
AMBULANCE AUTOMOBILES
Strictly Union St. Louis, Mo.
Parking in Rear of Chapel

PAULI GIFT SHOP

2295 YALE AVE.
(at City Limits Loop)

Greeting Cards—Lending Library
STerling 3627 Open Evenings

Compliments of

**LEADER UPHOLSTERING
AND FURNITURE MFG. CO.**

6825 CLAYTON
Hiland 4756

Dent and Body Work—Auto Painting
Greasing—Washing—Battery Charging

GARDENVILLE MOTOR CO.

8215 GRAVOIS
General Auto Repairing
Tires, Batteries and Accessories
Standard Oil Products FLanders 9657

Compliments of

Rutherford Electric Co.

51 N. GORE AVE.

Compliments of

KOUCEN MEAT CO.

6210 Easton Avenue

Joseph Koucen

MULberry 4792

A. BRANDENBURG

Finest in Foods
746 E. BIG BEND BLVD.

WEbster 1282

REpublic 2495

Webster Groves, Mo.

Compliments of

ARCADE SHOE REPAIR SHOP

126 W. Lockwood

WEBSTER GROVES, MO.

Compliments

from

ALPHONSE SCHNEIDERHAHN

Phone WEBster 4177

SUBURBAN FURNITURE CO.

Giesecking Brothers, *Props.*

36 West Lockwood Avenue

Webster Groves, Missouri

Office, WEBster 2902 Res., WEBster 369

RUTHERFORD ELECTRIC CO.

"LOVERS OF LIGHT WORK"

Licensed and Bonded

51 N. Gore Avenue

S. F. Rutherford

Webster Groves, Mo.

Compliments of

A FRIEND

Hlland 4100

RELLER CHEVROLET CO.

SALES - SERVICE - PASSENGER CARS

TRUCKS - USED CARS

7239-53 Manchester Ave.

Compliments of

A FRIEND

Compliments of

Jeffrey Riding Stables

5248 Oakland

●
Compliments of a Friend
●

STURTEVANT'S Shell Service

Super Shell Gasoline

Golden Shell Motor Oil

Shellubrication

24 W. Lockwood Ave.

WEBster 2961

Standard Service Station

Tires - Tubes - Accessories

Skinker and Clayton

Compliments of

JOHN M. CRUTSINGER

County Surveyor

EVERgreen 5660

Ficke Mattress & Upholstering Co.

Formerly With L. H. Stehle Mfg. Co.

MATTRESSES, INNERSPRING MATTRESSES,
PILLOWS, STUDIO COUCHES,
BOX MATTRESSES AND SPRINGS,

Hospital and Institution Work a Specialty
MATTRESSES AND PILLOWS RENOVATED
AND STERILIZED

5660 WABADA AVE.

For the Discriminating Buyer—



LEONARD *Electric*

is
Excellence

in
Modern Refrigeration

St. Louis, Mo.

ELECTRIC LAMP & SUPPLY CO.

Wholesale Dist.

Phone, Rosedale 3666

EMMERT CHAIR COMPANY

RENTAL SERVICE

Folding Chairs, Card Tables and Banquet
Tables for All Occasions

4627 Delmar Blvd.

Roland C. Emmert

St. Louis, Mo.

STerling 3590

FIELD'S

WOMEN'S APPAREL

7319 Manchester Ave.

Aged—Invalids—Convalescents

MAPLEWOOD NURSING HOME

2200 BREDELL AVENUE

STerling 3374

Mrs. S. E. Mondeux

★
Compliments

of

A FRIEND

★

THE ANCHORAGE

The Home of Rainbow Trout

Fine Liquors—Delicious Food

4925 South Kingshighway

JOHN J. LENZA

FLanders 9918

Shorthand Institute

- Secretarial
- Typewriting
- Reporting
- Bookkeeping
- Speed Dictation

• One of few expert schools, Individual coaching, day or night, School or home. Catalog mailed.

425 De Baliviere

FOrest 8481

RUBICAM SCHOOL

offers

Thorough preparation for Secretarial, Stenographic, and Accounting positions;
Placement Service without charge to Rubicam Graduates;
Summer Classes in Shorthand and Typewriting for College use.

Day and Evening Classes

Individual and Group Instruction

THREE CONVENIENTLY LOCATED SCHOOLS

4933 Delmar Blvd.—FOrest 3900

3469 S. Grand Blvd.—LAclede 0440

7701 Forsythe Blvd.—CAbany 4102

SHREWSBURY PHARMACY

The Friendly Store

FREE DELIVERY SERVICE
NOTARY PUBLIC

7730 Big Bend Blvd.
(AT NEWPORT)

Prescription Service

Hlland 9178-9288

WEBster 3395

Compliments of

JOHN W. ROWAN

PLASTERING COMPANY, Inc.

Victoria Bldg.

BROADWAY LAUNDRY CO.

A L S O

*Distinctively Different
Dry Cleaning*

•
GRand 3300

Compliments of

St. Mary's Hospital

Clayton Rd. and Bellevue

THE CRYSTAL RINK

3411 Cook Ave.

- ROLLER SKATE THE YEAR AROUND

THE LORELEI

4525 Olive St.

- SWIMMING, MAY TO SEPT.
ROLLER SKATE, SEPT. TO MAY

Hlland 3267

SCHURK IRON WORKS, INC.

5425 Manchester Ave.

ST. LOUIS, MO.

AMERICAN HOTEL

PRIVATE ROOMS
FOR BRIDGE PARTIES

*Caterers to Churches, Schools,
Weddings and Teas*

Phone, CHestnut 6400

FRanklin 4127

ELLIOTT & BARRY ENGINEERING CO.

●
*Heating Engineers and
Contractors*

●
4060 West Pine Blvd.
ST. LOUIS

Business Phone: REpublic 2226
Residence Phone: HIland 5572

Quality and
Service

Webster Groves Live Poultry Company

PAUL HARNEY, Prop.

FRESH EGGS AND POULTRY
Direct From Farm to You

78 North Gore Ave. Webster Groves, Mo.

National Refrigerators Co.

Manufacturers and
Distributors

**Frick Refrigeration
Commercial Refrigerators**

827 KOELN AVE.
St. Louis

Phill-Up With Phillips 66

HOME SERVICE STATION

ROsedale 9232 1482 Arlington

Goodyear Batteries

Compliments of

S. W. STEIN MEAT CO.

314 S. 21st St.

Caterpillar

JOHN FABICK TRACTOR CO.

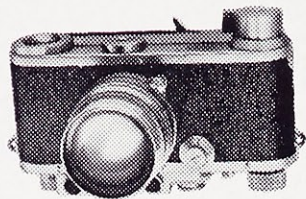
Gravois and Iowa Aves.
St. Louis, Mo.

—PHONES—

LAclede 8900

Long Dist. L. D. 5

Interested in Candid Photography?



Let Us Show You the Possibilities of
the Miniature Camera

Our thoroughly experienced personnel is ready
and willing to give you unbiased advice on the
merits of any camera and assistance in the
operation of the one you may select.

610 Olive

Erker's

518 N. Grand

THE PARKMOOR
All Cream Ice Cream

•
**DELICIOUS
SANDWICHES**

Compliments

of

HOLEKAMP LUMBER CO.

Peat Moss Seeds Fertilizer

REpublic 0140

HENRY SCHULZ FEED CO.

Branch of
John C. Roever Feed & Milling Co.

Let Us Solve Your Problems
LOUIS A. KISSNER, Manager

60 North Gore Avenue
WEBSTER GROVES, MO.

20th and Belmont—East St. Louis, Ill.
Phone, EAsT 141

5091 Delmar—St. Louis, Mo.
Phone, ROsedale 1421

BIEBEL BROS., INC.
ROOFING CONTRACTORS

*Roofs Applied Anywhere—Wholesale
and Retail*

AL. M. BIEBEL

ROsedale 1421

FLanders 2204

MODERN HIDE & TALLOW CO.

Collectors of
Suet, Shop Fat and Bones

Mrs. Louis H. Binz, Prop.

5714 FINKMAN

Compliments of

OLD VIENNA PRODUCTS CO.

Distributors of
Oke Doke Pop Corn and
Affiliated Products

•
4339 Duncan Ave.

FOR . . .

New and Rebuilt
TYPEWRITERS


See

ADDING MACHINE AND TYPEWRITER EXCHANGE

3565 Lindell Blvd.

FRanklin 2766

St. Louis, Mo.

Insulate Your Home With 

"The Perfect Home Insulation"

FIRE PROOF—VERMIN PROOF—MOISTURE PROOF—PERMANENT

VENARD INSULATING COMPANY

Authorized ZONOLITE Installers

STERling 0939

6147 MANCHESTER

Division of

SOUTH ST. LOUIS SLATE & TILE ROOFING CO.

Applicators of All Types of ROOFING—SIDING—WEATHERSTRIPPING
Remodeling of Attics and Rathskellers

AMBROSE MUELLER

Drugs

14 North Gore 7 West Big Bend

Established 1896

For Your Windows, see

DREES SHADE CO.

for Shades, Draperies, Curtains
and Venetian Blinds

ALSO

Upholstered Furniture and Slip Covers

GRand 9700

2616 Shenandoah

For . . .

ICE • COAL • FUEL OIL

Call Jefferson 1000

The CITY ICE & FUEL CO.

3638 OLIVE

Covers and Binding for the

1938 LAURETANUM

by

BECKTOLD COMPANY

ST. LOUIS, MO.

CHestnut 6106

**Lenhardt-McManus
Produce Co.**

●
WHOLESALE FRUIT AND
PRODUCE

●
909-911 N. Fourth Street
Wm. D. McManus

BETTER — SAFER — FASTER — ODORLESS
DRY CLEANING

TRI-CITY CLEANING & DYEING CO.
Repairing—Altering—Relining

LAUNDRY SERVICE
Webster 3316 115 W. Lockwood Ave.

●
Compliments of a

F R I E N D

Res. S**Terling** 3304—PHONES—Office, H**iland** 1894
HOURS: 10 to 11—2 to 4—6:30 to 8
Thursday and Saturday 9 a. m. to 12

DR. H. E. SAAK
CHIROPRACTOR

Palmer
Entrance 2701 Marshall Maplewood, Mo.

Custom Built Furniture, Unusual Creations

T U C K E R
Upholstering Co.

Upholstering - Repairing - Refinishing
Slip Covers and Cleaning

Phone for Free Estimate

4722 Delmar F**Orest** 1400
Since 1889

P. O. HOWE
HARDWARE CO.

646 E. Big Bend Blvd.

W**Ebster** 652

●
Compliments of

Henry J. Gerling

*Superintendent of Public Schools
of St. Louis*
●

Compliments of

Johannes - Tate
Pharmacy

636 NORTH GRAND
JEfferson 4136

Compliments of

OSCAR STEINBACH & SONS
EXPERT PIANO TUNING



3736 COTE BRILLIANTE
ROsedale 1523

Goodwin's Quality Market

New Location

627 BIG BEND

●
Compliments of

WOLFF PIPE & IRON CO.



Compliments of

HIGH POINT SERVICE STATION

Standard Oil Products
●

Compliments of

A Friend
■