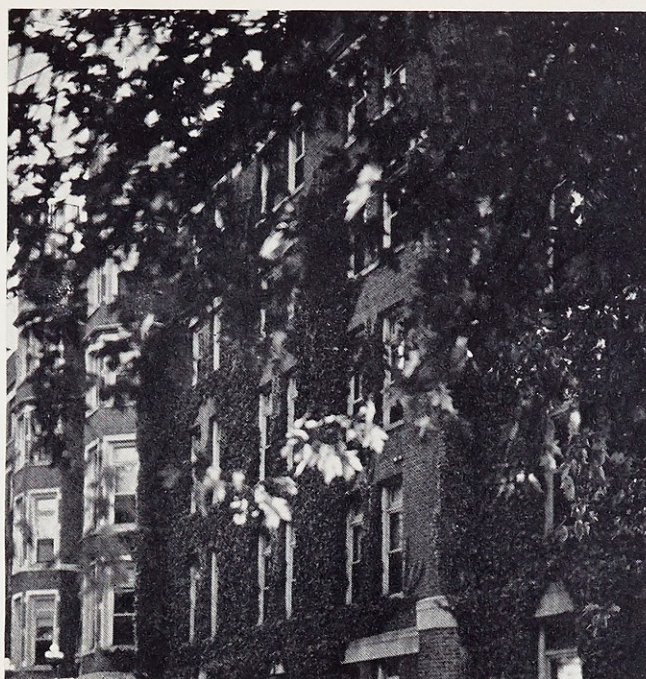


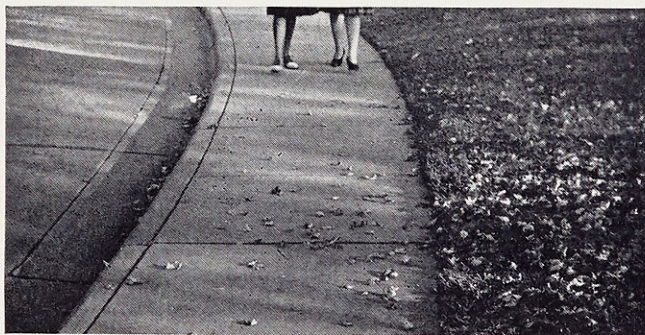
1940

Lauretanum





The Lauretanum



Portrays the 1940

Webster Girl



JANE HYDE

Editor

THELMA DUDENHOEFFER

Assistant Editor

CECELIA ALLHOFF

Business Manager

ANN HOF

Advertising Manager

Her Life

BETTY HELLINGHAUSEN

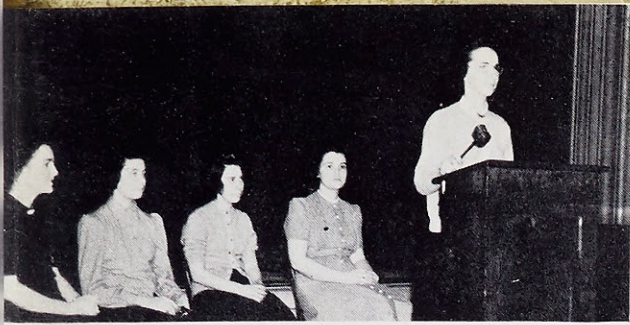
Circulation Manager

Recorded by

EILEEN REID

Sports Editor

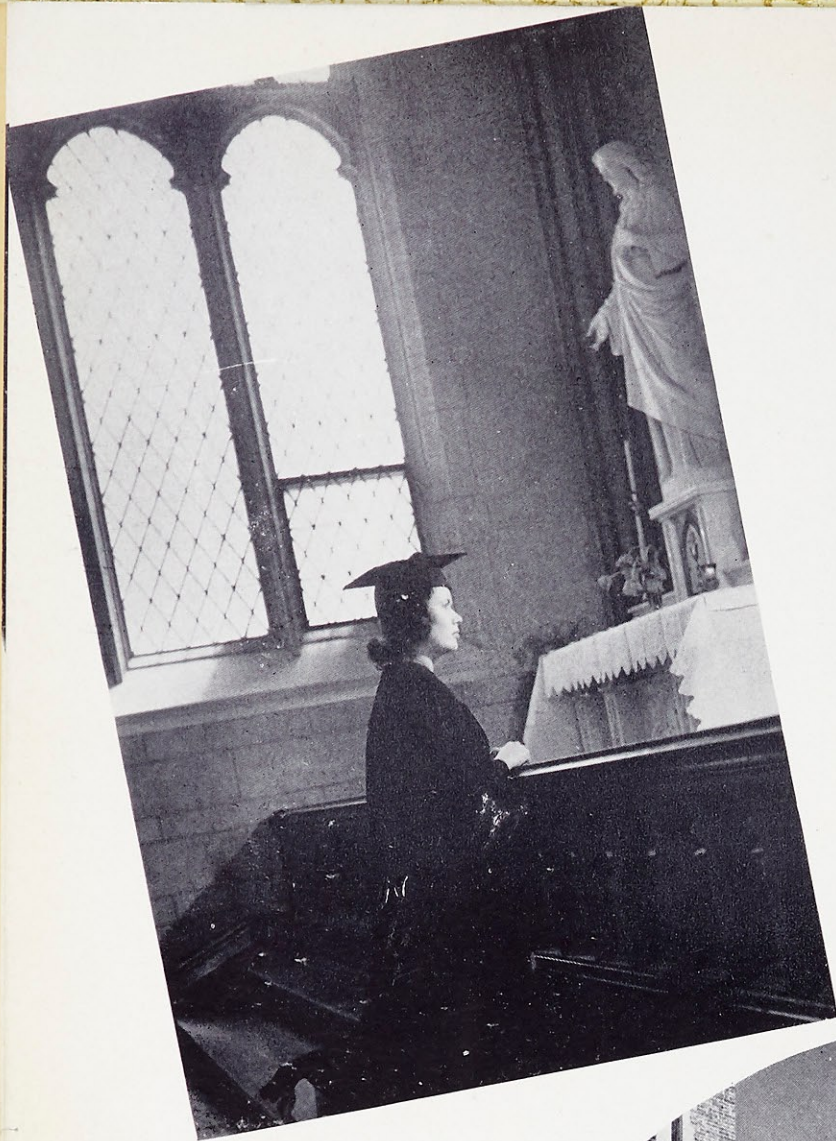
Combs-Duval Studio
Piaget Studio
Central Engraving Company
Becktold Company
Nies-Kaiser Printing Company



We Hope *that the* Webster Girl



through this medium of expression
endears herself to you — that her
spiritual and material life are herein
portrayed accurately and correctly—
that the following pages through de-
lineation tell you of her daily joys
and sorrows.



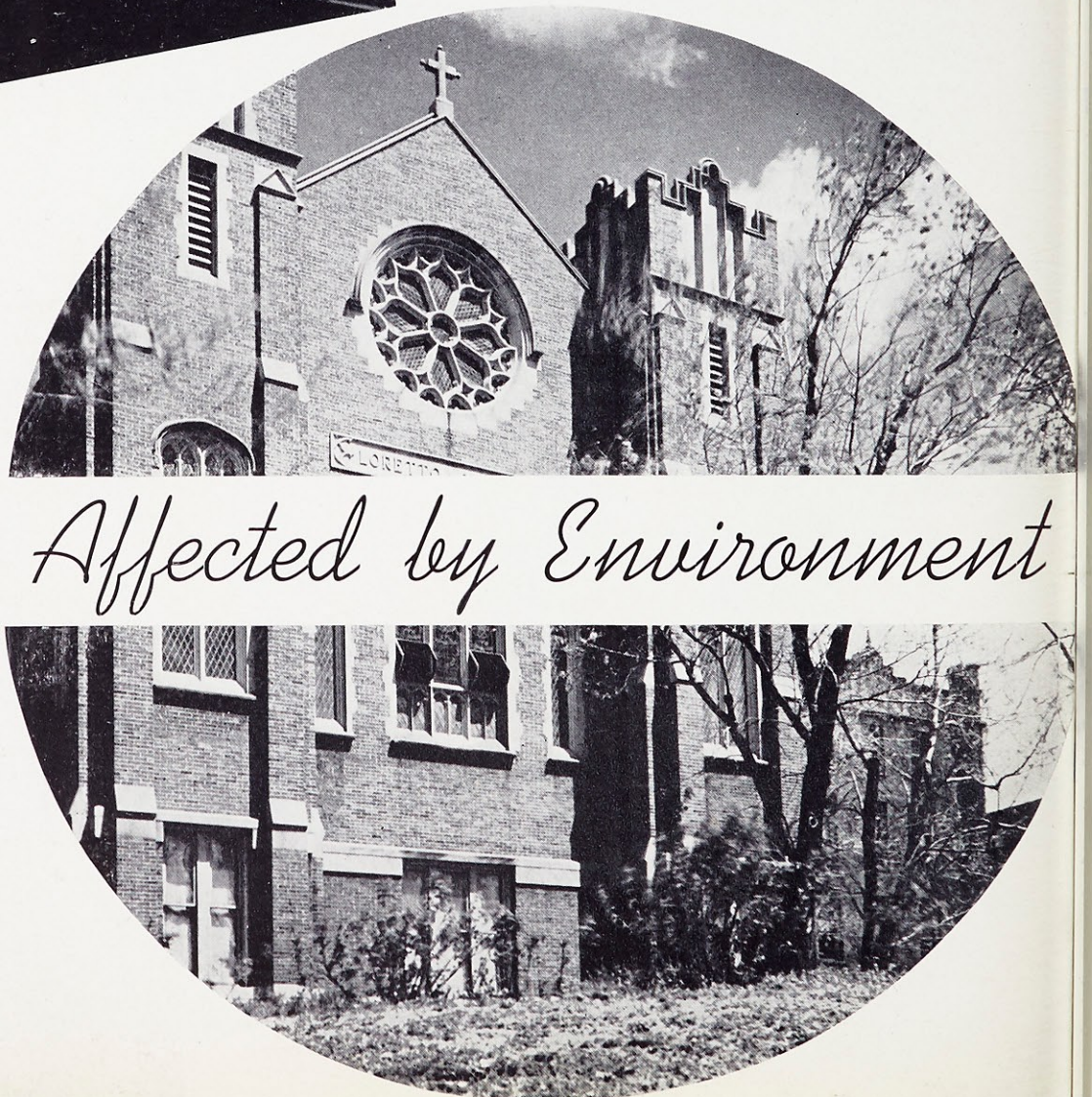
Reverend Mother Olivette, Superior General of the Sisters of Loretto, has for twelve years prudently and wisely guided the Society and has generously encouraged our Sisters to instill into young hearts feelings of loyalty and piety, which are the distinguishing mark of the true Webster Girl. To her, then, the members of the staff lovingly and gratefully dedicate this 1940

Lauretanum.

Her

Life

Affected by Environment



Gen-
welve
e So-
d our
eelings
distin-
rl. To
vingly

The Webster Girl

... IN HER CLASSROOM

Her Scholastic Life

... ON HER CAMPUS

Her Social Life

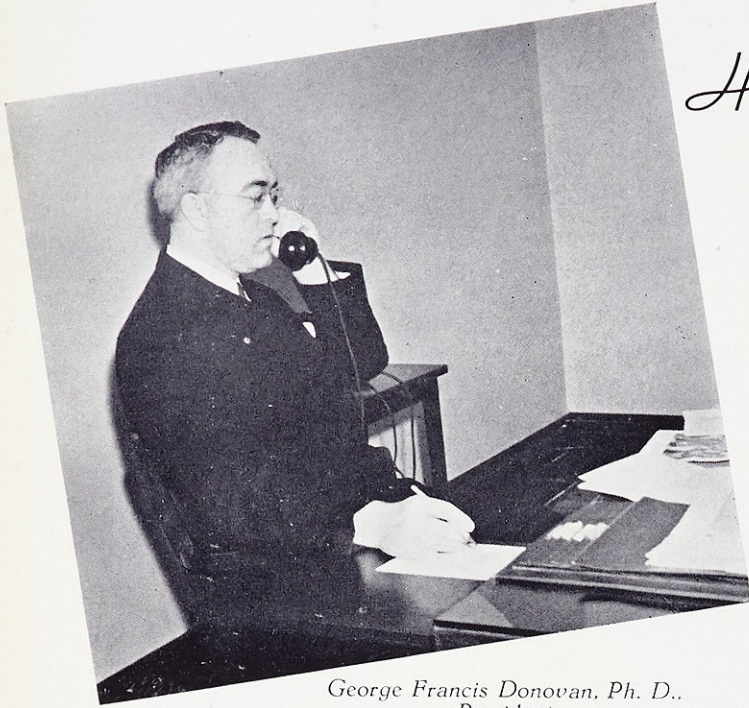
... IN HER ACTIVITIES

Her Extracurricular Life

... AT SPORTING PLAY

Her Athletic Life





*George Francis Donovan, Ph. D.,
President*

Her Spiritual Life

charted and guided by
the Sisters of Loretto and
the following professors
and teachers.

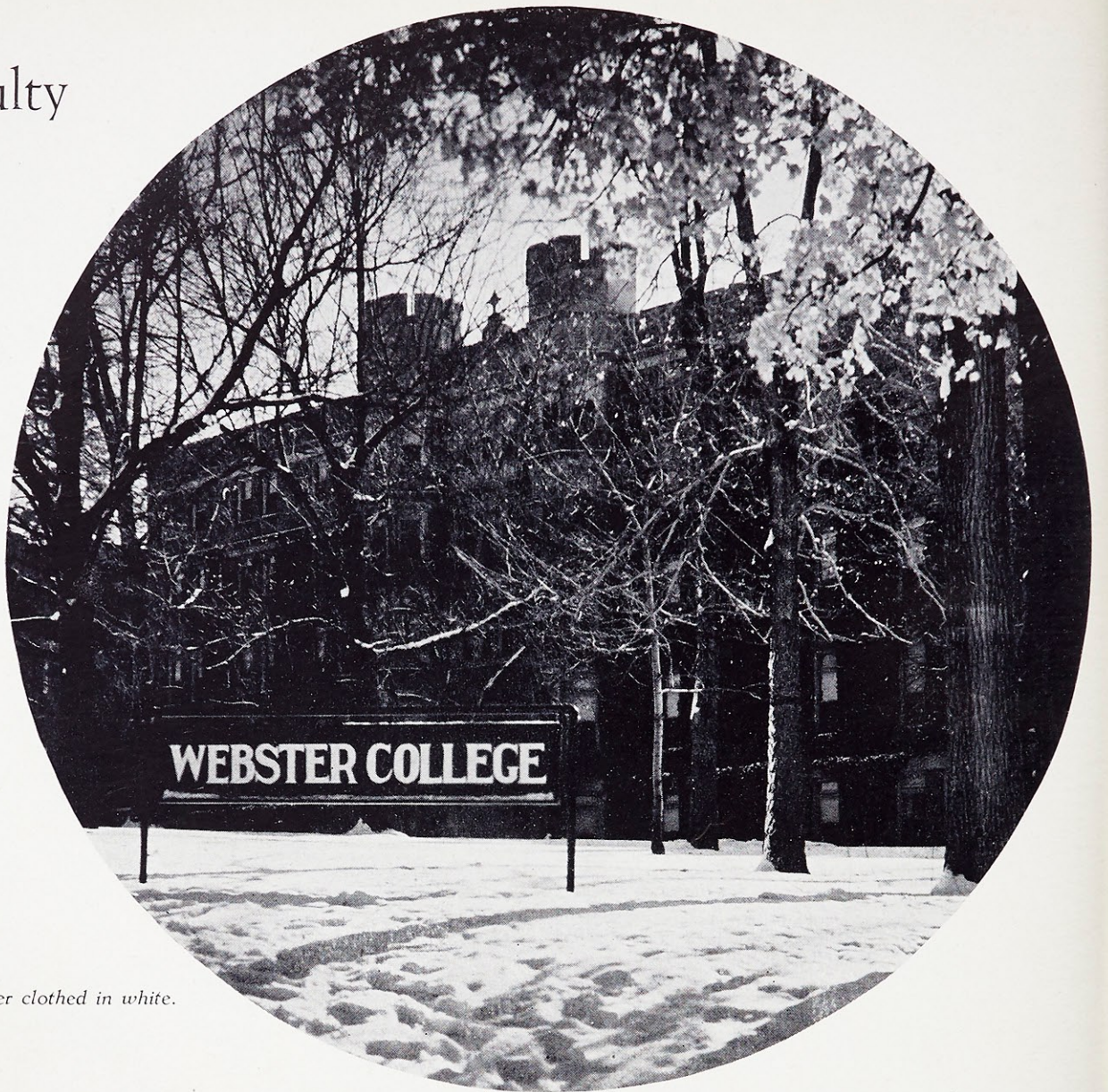
Officers of Administration

George Francis Donovan, A. M., Ph. D.	President
Mother M. Edwarda Ashe, A. M.	Regent
Sister Lillian Clare Reed, A. B.	Dean
Sister Frances de Chantal McLeese, M. S.	Dean of Women
Sister M. Borromeo Hynes, A. M.	Registrar
Sister Teresa Agnes Tierney	Treasurer

*Portals of welcome
to the Webster Girl.*



Faculty



Alma Mater clothed in white.



Faculty

UPPER ROW

Christian Bonnet

Mrs. Anna McClain Sankey

Rev. George C. Tolman

Rev. Gilmore H. Guyot

Rev. Charles F. Convery

John Campbell

LOWER ROW

C. C. Clayton

Mary Alma Fregeau

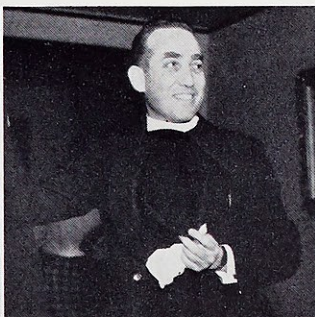
Charlotte Morehead

Moira Hayes

Mary Killian

Helen Pancerz

Margaret Morrison





Shadows in the snow on Webster's Campus.

The Webster Girl

Her Spiritual Life

Faculty

- Reverend Charles F. Convery, C. M., S. T. D.
Professor of Philosophy
- Reverend Leo P. Foley, C. M., S. T. D.
Professor of Philosophy and Director of the Department
- Reverend Gilmore H. Guyot, C. M., S. T. L.
Professor of Religion
- Reverend George C. Tolman, C. M., A. M.
Professor of Religion
- Christian Bonnet, LL. M.
Instructor in French
- John Campbell, M. S.
Instructor in Biology
- C. C. Clayton, B. J.
Instructor in Journalism
- George F. Donovan, A. M., Ph. D.
Professor of History and Director of the Department
- Mary Alma Fregeau, A. M.
Instructor in English
- Ruth Hauser, A. B.
Assistant in Modern Languages
- Moira Hayes, A. M.
Instructor in Chemistry
- Mary E. Killian, A. M.
Instructor in Dietetics
- Harry R. McClain, LL. D.
Instructor in Speech
- Charlotte M. Morehead, A. M.
Instructor in Speech and Education
- Helen K. Pancerz, B. S.
Instructor in Physical Education
- Anna McClain Sankey, A. B.
Instructor in Dramatic Art
- Margaret Morrison, R. N.
Director of Student Health Service



*Symbol of Webster's aspirations—
higher, ever higher.*

The Webster Girl

Her Spiritual Life

Faculty

- Sister Mary Leon Albin, A. M.
Instructor in Education and Community Supervisor of Elementary Schools
- Sister Mary Louise Beutner, A. M.
Instructor in English
- Sister Mary Paula Caretto, B. M.
Instructor in Voice
- Sister Mary Borgia Clarke, A. M., Cand. Ph. D.
Professor of Mathematics and Director of the Department
- Sister Mary Harriet Condon, A. M.
Instructor in Biology
- Sister Georgiana Ernst, A. B.
Instructor in English
- Sister Lorita Fay
Assistant in Conservatory, Piano
- Sister Mary Edmond Fern, A. M., Ph. D.
Professor of Classical Languages and Director of the Department
- Sister Germaine Fogarty, B. S.
Instructor in Mathematics and Physics
- Sister Isabella Marie Foley, A. M.
Instructor in Latin
- Sister Adaline Gemoets, Mus. M.
Professor of Theory of Music and Director of the Conservatory
- Sister Roberta Hardesty, A. M.
Instructor in French
- Sister Alphonsine Hensen, B. M.
Instructor in Organ
- Sister Joecile Hunleth, B. M.
Assistant in Conservatory, Violin
- Sister Borromeo Hynes, A. M.
Instructor in Education
- Sister Frances de Chantal McLeese, M. S.
Instructor in Chemistry
- Sister Dolorine Morrison, A. M., Ph. D.
Professor of Speech and Director of the Department
- Sister Ethelbert Owens, A. M.
Instructor in Spanish and Director of the Department of Modern Languages
- Sister Mary Aubert Tennyly, A. M.
Instructor in History
- Sister Clotaire Thro, B. S. in L. S.
Librarian
- Sister Rose Vincent Wander, B. S. in Music
Instructor in Music and Community Supervisor of Music, Elementary Schools

The Webster Girl

In Her Classroom

The foremost endeavor of a Catholic Liberal Arts Education is to develop the souls and minds of its students—a dual unfolding of spiritual and intellectual powers.

For four years we have studied at Webster under the guidance of the Sisters of Loretto; now that an end has come for assignments, term papers, tests, and theses we realize that our education has not been in vain.

To those inquiring what is the end of Liberal Knowledge let us answer in the words of Cardinal Newman: "Knowledge is capable of being its own end. Such is the constitution of the human mind, that any kind of knowledge, if it be really such, is its own reward."



The Webster Girl



Natalie Allison

University City, Mo.

Ph. B., English, Spanish

Personal Hobby:

Saving Jefferson nickels

Pet Peeve:

Men who don't dance

Ambition:

To be a good wife

*Spanish Club—'37, '38, '39; Secretary-
Treasurer, '38; President, '39*

Class Treasurer—'38

Sodality—'37, '38, '39

Vodvil—'38, '39

Volley Ball Class Team—'39

Loretine Staff—'39

Athletic Association—'37, '38, '39

C. S. M. C.—'37, '38, '39



In Her Classroom

Florence Baxter

St. Louis, Mo.

A. B., English, Latin

Personal Hobby:

Web

Pet Peeve:

Spoiled girls

Ambition:

*To have a sheepskin in my hand and
a ring on my finger*



Web Staff—'37, '38, '39; Editor, '40
Varsity—'37, '38, '39, '40
Classical Club—'37, '38, '39, '40;
President, '38, '39
French Club—'37, '38
International Relations—'39
Student Government Class Representative—'38
Student Spiritual Council—'37
Treasurer of Sodality—'37
Nominating Committee—'39
Athletic Association—4 years
Class Basketball—'37, '38, '39
Class Volleyball—'37, '38
Class Baseball—'37, '38, '39
Press Club—'39
C. S. M. C.—4 years
English Award—'38
*George Washington Medal for Contemporary
History—'37*
Vodvil—'37, '38, '39



The Webster Girl



Marjorie Belt

Flora, Ill.

Ph. B., Speech, English

Personal Hobby:

Painting

Pet Peeve:

Term papers

Ambition:

*To have my own private
School of Speech*

Orchestra—'37
Choral Club—'37
Leo Moser Oratorical Award, 1st place—'37
French Club—'38, '39
Loretto Players—'38, '39, '40; Vice-President,
'39; President, '40
International Relations Club—'39, '40
Photography Club—'39
Press Club—'40
Art Editor Lauretanum—'39
Art Editor Loretine—'40
May Queen—'39



In Her Classroom

Rose Brady
University City, Mo.
A. B., English, French

Personal Hobby:
Knitting

Pet Peeve:
Class in Spring weather

Ambition:
To graduate



French Club—'39, '40
Athletic Association—'39, '40
Sodality—'39, '40
C. S. M. C.—'39, '40



The Webster Girl



Loretta Corbett ✓

St. Louis, Mo.

A. B., Mathematics, English

Personal Hobby:

Hunting

Pet Peeve:

Gushy people

Ambition:

*To carry out to the best of my ability,
my vocation in life*

Drum and Bugle—'38, '39, '40
Sodality—'37, '38, '39, '40
Advertising Manager of Loretine—'39
Web Staff—'39, '40
Athletic Association—'37, '38, '39, '40
C. S. M. C.—'37, '38, '39, '40
Math. Club—'38, '39, '40; Vice-President, '40
French Club—'38, '39
Class Basketball—'39
May Maid—'39



In Her Classroom

Patricia Costello

Clayton, Mo.

A. B., Latin, Spanish

Personal Hobby:

Dancing

Pet Peeve:

Practice teaching

Ambition:

To teach Latin



Sodality—'37, '38, '39, '40
Athletic Association—'37, '38, '39, '40
C. S. M. C.—'37, '38, '39, '40
May Maid—'37
Riding Club—'39, '40
Spanish Club—'37, '38, '39, '40
Classical Club—'38, '39, '40
French Club—'40
Math. Club—'39, '40
Assistant Editor of Lauretanum—'39
Circulation Manager of Loretine—'40
Vodvil—'37, '38, '39, '40; Co-dance
Director, '40
Drum and Bugle—'38; Drum Major, '39, '40
Class Secretary—'40
Flower Show Representative—'40

The Webster Girl



✓ Mildred Daniels

Santa Fe, N. M.

A. B., History, Sociology

Personal Hobby:

Photography

Pet Peeve:

Required assemblies

Ambition:

To obtain a Ph. D. in History

Spanish Club—'37, '38, '39, '40; President, '38

International Relations—'38, '39, '40;

President, '39, '40

Music Guild—'37, '38, '39, '40

Classical Club—'38, '39, '40

House Committee—'39, '40

Sodality—'37, '38, '39, '40

C. S. M. C.—'37, '38, '39, '40

Co-operative Association—'37, '38, '39, '40;

Secretary, '39; General Manager, '40



In Her Classroom

Virginia Ann Driscoll ✓

El Paso, Texas

A. B., English, Spanish

Personal Hobby:

Stamp collecting

Pet Peeve:

Long-waisted clothes

Ambition:

To tour Europe



Athletic Association—'37, '38, '39, '40
Class Basketball—'38, '39, '40
Varsity Basketball—'39, '40
Class Baseball—'37, '38, '39
Class Volleyball—'37, '38, '39, '40
Photography Club—'39
Spanish Club—'37, '38
Music Guild—'37, '38, '39; President, '39
Orchestra—'37, '38
Web Staff—'39
Sodality—'37, '38, '39, '40
Co-operative Organization—'40;
Vice-President, '40
C. S. M. C.—'37, '38, '39, '40
Class Secretary—'38

The Webster Girl



Mary Loretto Galbraith

Anniston, Ala.

Ph. B., English, Spanish

Personal Hobby:

Music

Pet Peeve:

Required assemblies

Ambition:

To get a good job with good pay

Sodality—'37, '38, '39, '40
Spanish Club—'38, '39, '40; Secretary-
Treasurer, '39
Music Guild—'38, '39, '40
Choral Club—'39
Volleyball—'38
Lorettine Staff—'40
Class Treasurer—'40
C. S. M. C.—'37, '38, '39, '40



In Her Classroom

Dorothy Ghio

St. Louis, Mo.

Ph. B., French, English

Personal Hobby:

Knitting

Pet Peeve:

Runs in stockings

Ambition:

Travel



French Club—'37, '38, '39, '40;
Vice-President, '40

S. S. C. Board—'37

Sodality May Maid—'37

C. S. M. C.—'37, '38, '39, '40

Drum and Bugle Corps—'38, '39, '40

Vodvil—'37, '38, '39, '40

Athletic Association—'37, '38, '39, '40



The Webster Girl



✓
Mary Elizabeth Hoffmeister

St. Louis, Mo.

A. B., Mathematics, English

Personal Hobby:
Collecting snapshots

Pet Peeve:
Men who can't dance

Ambition:
Not to teach

French Club—'37, '38
*Math. Club—'38, '39, '40; Secretary-
Treasurer, '39*
Drum and Bugle Corps—'38, '39, '40
May Maid—'38
Vodvil—'39
Business Manager of Web—'39, '40
Sodality—'37, '38, '39, '40
C. S. M. C.—'37, '38, '39, '40
Athletic Association—'37, '38, '39, '40



In Her Classroom

Mary Jane Houlihan

Clayton, Mo.

Ph. B., Speech, English

Personal Hobby:

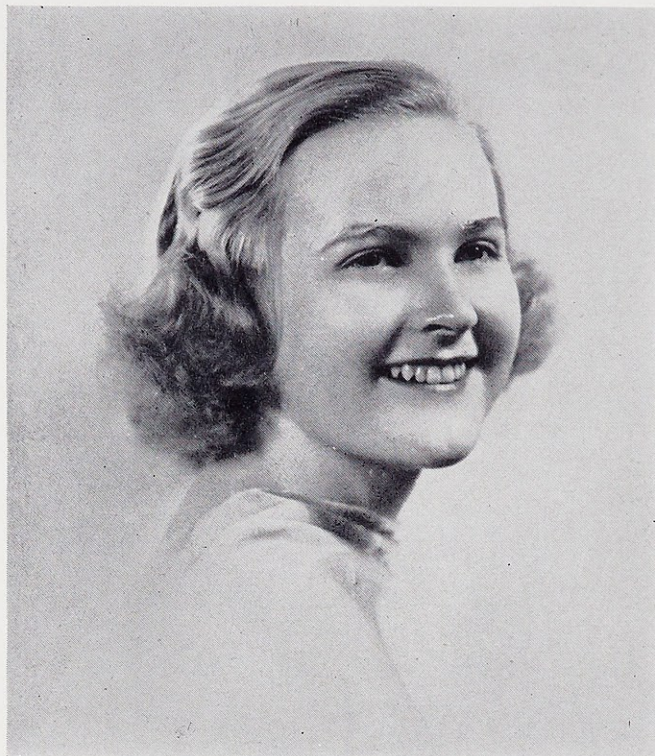
Photography

Pet Peeve:

Education

Ambition:

To work in an office



French Club—'36, '37

Athletic Association—'37, '38, '39, '40

Business Manager of Loretine—'40

Business Manager of Lauretanum—'39

Loretto Players—'37, '38, '39, '40;

Treasurer, '39

Drum and Bugle Corps—'39, '40

Sodality—'37, '38, '39, '40

C. S. M. C.—'37, '38, '39, '40

*Vodvil—'37, '38, '39, '40; Business Manager
of Vodvil, '40*



The Webster Girl



✓ Mary Louise Hyde

University City, Mo.

A. B., Latin, English

Personal Hobby:

Sleeping

Pet Peeve:

Eight o'clock classes

Ambition:

*To find a suitable profession and
make a success of it*

Student Government President—'40
Student Government Treasurer, '39
Class President—'37, '38
Class Secretary—'39
Sodality—'37, '38, '39, '40
C. S. M. C.—'37, '38, '39, '40
Vodvil—'37, '38, '39, '40
French Club—'37, '38
S. S. C.—'40
International Relations—'40
Classical Club—'38, '39, '40
Athletic Association—'37, '38, '39, '40;
Vice-President, '39
Varsity Basketball—'37, '38, '39, '40;
Captain, '39, '40
Class Basketball—'37, '38, '39, '40
Class Baseball—'37, '38, '39, '40
Class Volleyball—'37, '38, '39, '40
Who's Who in American Colleges and
Universities—'40



In Her Classroom

Roberta Irwin

Akron, Ohio

A. B., History, Philosophy

Personal Hobby:

Baseball games

Pet Peeve:

Bad dancers

Ambition:

To break in the eighties in golf



French Club—'37, '38
Classical Club—'39, '40
Sodality—'37, '38, '39, '40
*International Relations—'37, '39; Secretary-
Treasurer, '39*
Class Basketball—'37, '38
Class Baseball—'37, '38
Web Staff—'40
Loretine Staff—'40
Music Guild—'39
Vodvil—'39, '40



The Webster Girl



✓ Mary Courtney Jones

Clanton, Ala.

B. S., Mathematics, English

Personal Hobby:

Listening to radio

Pet Peeve:

So many meetings

Ambition:

To be a philosopher

Sodality—'37, '38, '39, '40; Secretary, '40
S. S. C.—'37, '38, '39, '40
Mathematics Club—'38, '39, '40; President, '40
C. S. M. C.—'37, '38, '39, '40
Choral Club—'38, '39
Music Guild—'39, '40
Orchestra—'37, '38
French Club—'37, '38, '39
Lorette Staff—'40
Co-operative Association—'37, '38, '39, '40;
Treasurer, '39, '40



In Her Classroom

Loretto Kegriss ✓

Warren, Ariz.

Ph. B., English, Spanish

Personal Hobby:

Music and poetry

Pet Peeve:

Hillbilly music

Ambition:

*Not to miss any classes or to be tardy
until I finish school*



Sodality—'37, '38, '39, '40
Choral Club—'37, '38, '39, '40;
President, '39, '40
Music Guild—'37, '38, '39, '40
Orchestra—'37, '38, '39
Spanish Club—'37, '38, '39, '40;
Vice-President, '37
C. S. M. C.—'37, '38, '39, '40;
Representative, '37
Hall Committee—'39, '40



The Webster Girl



Mary Frances Knoedelseder

St. Louis, Mo.

A. B., History, Sociology

Personal Hobby:

Ballet dancing

Pet Peeve:

Theses

Ambition:

To become useful in one form or another

Sodality—'37, '38, '39, '40

C. S. M. C.—'37, '38, '39, '40

Athletic Association—'37, '38, '39, '40

French Club—'37, '38, '39, '40

Classical Club—'37, '38

*International Relations Club—'39, '40;
Vice-President, '40*

Editor of Laetanus—'39

*Faculty Representative of Student Government
Board—'40*

Vodvil—'37, '38, '39, '40

Drum and Bugle—'38, '39, '40



In Her Classroom

Dorothy McKinlay

Webster Groves, Mo.

B. S., Mathematics, Chemistry

Personal Hobby:

Photography

Pet Peeve:

War news

Ambition:

To be a mathematics teacher



Sodality—'37, '38, '39, '40
Math. Club—'37, '38, '39, '40
Chem. Club—'38, '39, '40
Orchestra—'37, '38, '39, '40; President, '40
Choral Club—'37
Photography Club—'39
Vodvil—'37, '38, '39, '40
Varsity Basketball—'38
Class Basketball—'37, '38, '39, '40
Class Volleyball—'38, '39, '40
Class Baseball—'37, '38, '39, '40
Hiking Leader—'38, '39, '40



The Webster Girl



✓ Amelia O'Neill

Vicksburg, Miss.

A. B., History, English

Personal Hobby:

Photography

Pet Peeve:

Noise

Ambition:

*To prove myself of some good
in some way*

International Relations—'40

Vodvil—'40

Sodality—'40

C. S. M. C.—'40



In Her Classroom

Beatrice Perez

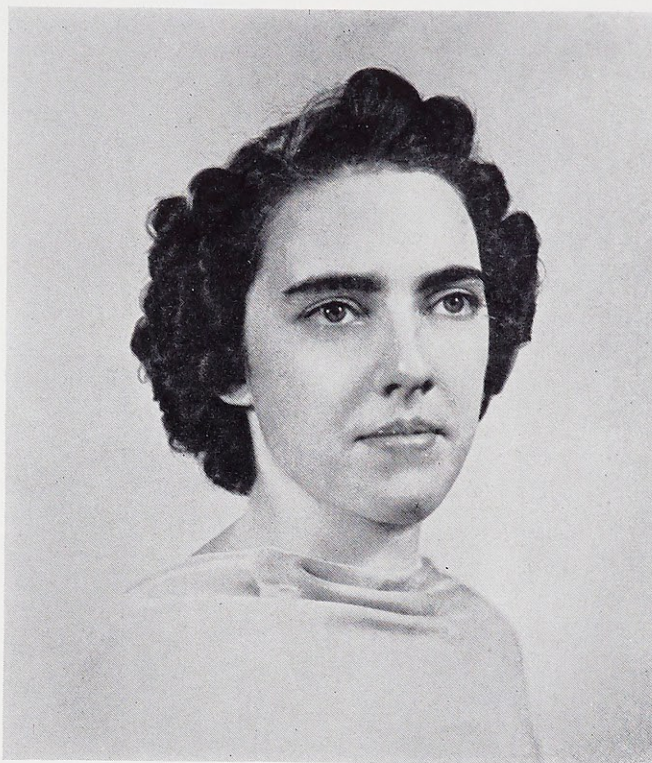
Kirkwood, Mo.

Ph. B., Speech, French

Personal Hobby:
Collecting pictures

Pet Peeve:
Eight o'clock classes

Ambition:
A career and then a happy home



French Club—'37, '38, '39, '40
Drum and Bugle Corps—'38, '39
Vodvil—'37, '38, '39, '40
S. S. C.—'39
Sodality May Maid—'39
C. S. M. C.—'37, '38, '39, '40
Athletic Association—'37, '38, '39, '40
Loretto Players—'37, '38, '39, '40;
Secretary, '39
Co-operative Association—'38, '39; Vice-
President, '38; President, '39



The Webster Girl



Mildred Peters

Florissant, Mo.

A. B., Mathematics, Education

Personal Hobby:

Sports

Pet Peeve:

8:00 classes

Ambition:

*With a ring on the finger,
what do you think?*

*French Club—'37, '38, '39, '40; Secretary-
Treasurer, '40*

*Math-Physics—'38, '39, '40; Secretary-
Treasurer, '40*

Classical Club—'38

*Choral Club—'37, '38, '39, '40; Secretary-
Treasurer, '38, '39, '40*

Web Staff—'40

C. S. M. C. Representative—'39; President, '40

S. S. C.—'40

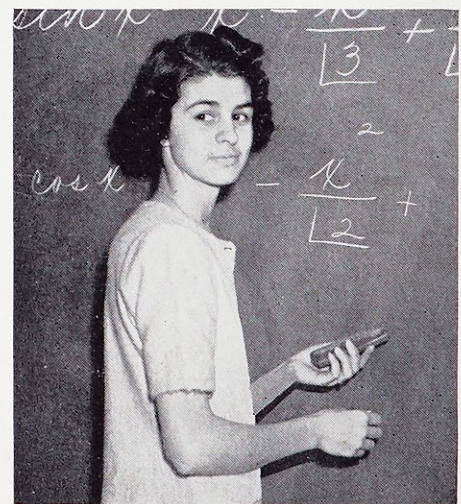
Class Vice-President—'39

Track—'37, '38, '39

Baseball—'37, '38, '39

Basketball—'37

Volleyball—'38



In Her Classroom

Elizabeth Pollmann

St. Louis, Mo.

A. B., Latin, English

Personal Hobby:

Piano

Pet Peeve:

Term papers

Ambition:

Sleep



Student Government Representative—'40
President of the Riding Club—'38, '39
Circulation Manager of the Lauretanum—'39
Vice-President of Classical Club—'39
Treasurer of St. Louis University Classical Club—'40
Vodvil—'37, '38, '39, '40
Class Baseball—'37, '38, '39, '40; Captain, '37
Class Basketball—'37, '38, '39, '40; Captain, '37
Varsity Basketball—'37, '38, '39, '40
Class Volleyball—'37, '38, '40
Sodality—'37, '38, '39, '40
C. S. M. C.—'37, '38, '39, '40; President, '38
Classical Club—'37, '38, '39, '40
French Club—'37, '38
Chemistry Club—'37
Athletic Association—'37, '38, '39, '40;
President, '40
Editor of Loretine—'40
Web Staff—'40
Press Club—'40
Who's Who in American Colleges and Universities—'40

The Webster Girl



Josephine Raftery

St. Louis, Mo.

Ph. B., English, History

Personal Hobby:

Dates

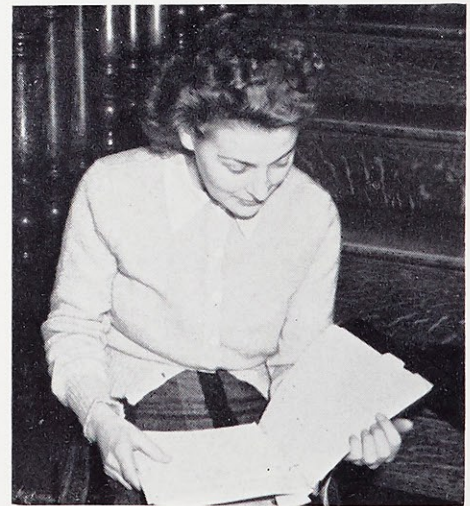
Pet Peeve:

Term papers

Ambition:

To wake up beautiful some morning

Vice-President of Missions—'37
Secretary-Treasurer of Loretto Players—'38
French Club—'37, '38
Loretto Players—'37, '38, '39, '40
Drum and Bugle—'38
Lorettine Staff—'39
Vodvil Chairman—'39
C. S. M. C.—'37, '38, '39, '40
Sodality—'37, '38, '39, '40
Who's Who in American Colleges and
Universities—'39



In Her Classroom

Ann Ritch

St. Louis, Mo.
A. B., English, Latin

Personal Hobby:

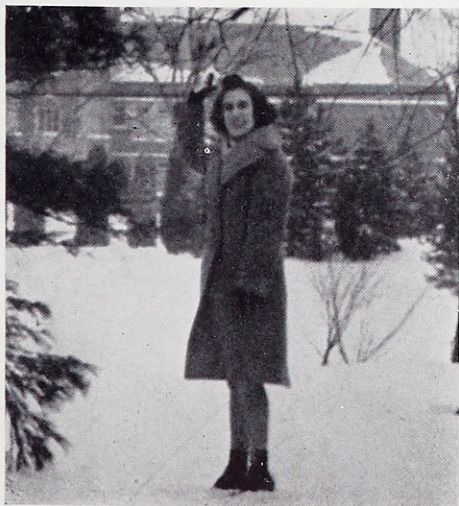
Tennis

Pet Peeve:

School

Ambition:

*To write good radio programs
and skits*



Class Vice-President—'38
Class President—'39, '40
Sodality—'37, '38, '39, '40
Varsity Basketball—'37, '38, '39, '40
Student Government Board—'39, '40;
Secretary, '40
Vodvil—'37, '38, '39, '40
Athletic Association—'37, '38, '39, '40;
Treasurer, '38, '39
C. S. M. C.—'37, '38, '39, '40
Orchestra—'37
Class Volleyball—'37, '38, '39, '40
Class Basketball—'37, '38, '39, '40
Class Baseball—'37, '38, '39, '40

The Webster Girl



Mary Martha Ritter

Louisville, Ky.

B. S., Chemistry, Mathematics

Personal Hobby:

Music

Pet Peeve:

Scarcity of food

Ambition:

Industrial chemist

Class Vice-President—'37, '40
Class Representative on Student Government
Board—'38, '39
Loretto Hall President—'40
Sodality—'37, '38, '39, '40; Secretary, '40
French Club—'37, '38
Chemistry-Biology Club—'37, '38, '39, '40;
Secretary, '38, '39; President, '40
Math. Club—'38, '39, '40
Music Guild—'40
House Committee—'39, '40
Athletic Association—'37, '38, '39, '40
C. S. M. C.—'37, '38, '39, '40



In Her Classroom

Frances Louise Rothermich

Ferguson, Mo.
Ph. B., Speech, French

Personal Hobby:
Collecting match folders

Pet Peeve:
Sarcasm

Ambition:
*To continue work in dramatics and
then marry*



Drum and Bugle Corps—'38, '39, '40
Loretto Players—'38, '39, '40
Co-operative Association—'38, '39, '40
Sodality—'37, '38, '39, '40
Vodvil—'38, '39, '40
French Club—'37, '38, '39, '40
Mission Unit—'37, '38, '39, '40
Athletic Association—'37, '38, '39, '40



The Webster Girl



✓ Lucille Rummell

St. Louis, Mo.

B. S., Mathematics, Education

Personal Hobby:

Music

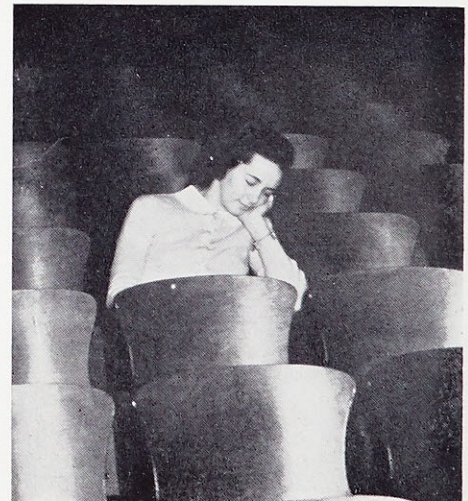
Pet Peeve:

Noisy people

Ambition:

To be happy and successful

Sodality—'39, '40
Sodality May Maid—'39
Class Representative on S. S. C.—'40
C. S. M. C.—'39, '40
Choral Club—'39, '40
French Club—'39
Math. Club—'39, '40
Vodvil—'39, '40
Athletic Association—'39, '40
Class Volleyball—'39, '40
Class Baseball—'39
Class Basketball—'39
Music Guild—'40



In Her Classroom

Melanie Schlingman ✓

St. Louis, Mo.

Ph. B., French, English

Personal Hobby:

Knitting

Pet Peeve:

Grumbling

Ambition:

To keep on having fun



French Club—'38, '39

Athletic Association—'38, '39

Tennis Manager—'39

Vodvil—'39



The Webster Girl



Marion Ware

St. Louis, Mo.

A. B., Latin, French

Personal Hobby:

Saving jokers of cards

Pet Peeve:

This general "Tear down attitude"

Ambition:

Archaeologist

Sodality—'37, '38, '39, '40; Prefect, '40
Student Government Board—'37, '38, '39, '40;
Vice-President, '39; Faculty
Representative, '39
French Club—'37, '38, '39, '40; President, '40
C. S. M. C.—'37, '38, '39, '40
St. Louis University Classical Club—'37, '38,
'39, '40; President, '40
Choral Club—'37, '38, '39
Classical Club—'38, '39, '40
Athletic Association—'37, '38
Class Volleyball—'38
Chemistry Club—'38
Photography Club—'39
Vodvil—'37, '38, '39
Who's Who in American Colleges and
Universities—'39, '40



In Her Classroom

To the three Sisters who are members of this year's senior class, this page is lovingly dedicated. We shall frequently recall our associations with them and will ever wish them success and happiness in their noble life-work.

The Webster Girl

Juniors

THELMA DUDENHOEFFER
St. Louis, Missouri

HELENE KNAPP
St. Louis, Missouri

VIRGINIA RIEHEMANN
St. Louis, Missouri

ELIZABETH FURI
St. Louis, Missouri

RITA MARIE HENTZEN
Kansas City, Kansas

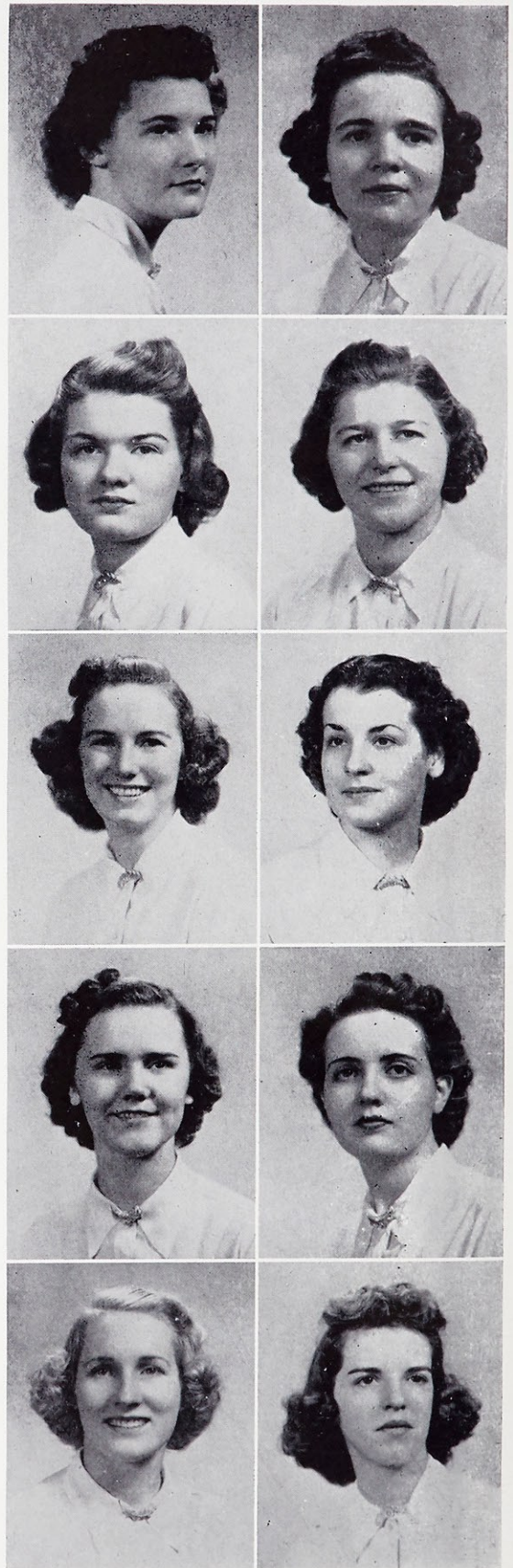
RUTH RUMMELHART
Colorado Springs, Colorado

DOROTHY ST. JOHN
Fort Lupton, Colorado

CECELIA CONREY
Monett, Missouri

GLORIA MEDER
St. Louis, Missouri

EILEEN REID
St. Louis, Missouri



In Her Classroom

Juniors



ANN HOF
St. Louis, Missouri

DOROTHY OTTENS
St. Louis, Missouri



JANE HYDE
St. Louis, Missouri

MARIE JO SCHUESSLER
Springfield, Illinois



MARY JANE McAULIFFE
St. Louis, Missouri

CECELIA ALLHOFF
St. Louis, Missouri



BETTY HELLINGHAUSEN
Breckenridge, Texas

CLARE JACOBMEYER
Shrewsbury, Missouri



PEGGY QUICK
St. Louis, Missouri

EUGENIA HARTER
St. Louis, Missouri

The Webster Girl

Sophomores

JANE MORRIS
Webster Groves, Missouri

CATHERINE CARROLL ✓
Webster Groves, Missouri

BETTY BURKE ✓
St. Louis, Missouri

RITA JO GAUVIN ✓
St. Louis, Missouri

MARY JANE NOLAN
Denver, Colorado

MARIAN SCHMIDBAUER
St. Louis, Missouri

MARY ELLEN SULLIVAN
Grand Tower, Illinois

VICTORIA TESSMER
St. Louis, Missouri

MARY CATHERINE PHELAN ✓
Maplewood, Missouri

MARY ELIZABETH BAKER ✓
St. Louis, Missouri

HELEN RITTER ✓
Louisville, Kentucky

CHARLOTTE McCANN ✓
Lowell, Massachusetts

JULIA ANN GOSEN
Webster Groves, Missouri

LA VERNE VAN NEST ✓
St. Louis, Missouri

DOLORES RAKERS ✓
St. Louis, Missouri

MARY LOUISE FITZGIBBONS
University City, Missouri

MARIE NEVILLE
St. Louis, Missouri

ANN O'DONNELL ✓
St. Louis, Missouri

MARIE FINKE
St. Louis, Missouri

ROSALIE BRENNAN ✓
St. Louis, Missouri

MARY B. HELD
St. Louis, Missouri

DOROTHY BULFIN
St. Louis, Missouri



In Her Classroom



Sophomores

CATHERINE O'REGAN ✓
St. Louis, Missouri

MARY FRANCES BURKE
Pocahontas, Arkansas

BARBARA GLEASON ✓
Rolla, Missouri

MARY LOUISE McFADDEN
Mt. Carmel, Pennsylvania

MARY ADELINE KILKENNY ✓
Santa Fe, New Mexico

CHARLOTTE BRAUN
Cape Girardeau, Missouri

MARY MARGARET GIBBONS
St. Louis, Missouri

MARION KLEES
University City, Missouri

MARGARET WARD ✓
St. Louis, Missouri

CECELIA BEINE ✓
St. Louis, Missouri

VIRGINIA CHAPMAN
St. Louis, Missouri

HELEN THURMOND ✓
Clayton, Missouri

MARIAN GRANT
St. Louis, Missouri

JEANNE HAGAN
Mexico, Missouri

MARY JANE GREENSLADE
Highland Park, Illinois

LORRAINE KNESE ✓
St. Louis, Missouri

MARIAN VIERHELLER
St. Louis, Missouri

DOROTHY YATES
Hannibal, Missouri

MARIE KIENTZY
Elsberry, Missouri

RUTH FRANCES WYNN
Maplewood, Missouri

JUNE KAVANAUGH ✓
Webster Groves, Missouri

LORRAINE MAHER ✓
Normandy, Missouri

The Webster Girl

Freshmen

ROSIE MAE SPALDING
Lebanon, Kentucky

SUSAN MONTI
St. Louis, Missouri

MARY EILEEN MANSFIELD
St. Louis, Missouri

EILEEN HANLON
Wauwatosa, Wisconsin

JANE DICK
St. Louis, Missouri

GERALDINE REISCH
Richmond Heights, Missouri

ROSEMARY NESTOR
St. Louis, Missouri

MARTHA JANE BARNES
Denver, Colorado

MARY AGNES LINGNER
St. Louis, Missouri

FLORENCE MCKINLAY
Webster Groves, Missouri

JULIE-ANNE ROZIER
Webster Groves, Missouri

JULIA ADEL CHAPMAN
Santa Fe, New Mexico

JANET PETERSON
St. Louis, Missouri

MARY ANNETTE DRAKE
St. Louis, Missouri

DOROTHY CANTALIN
St. Louis, Missouri

SARAH LOUISE SPALDING
Lebanon, Kentucky

JUNE McMAHON
St. Louis, Missouri

DOROTHY BUERGLER
St. Louis, Missouri

ROSEMARY GULLEDGE
Marion, Illinois

LEAH MARIE DE ROY
St. Charles, Missouri

PHYLLIS HILLEMAYER
Webster Groves, Missouri

LILLIAN GALLAGHER
Webster Groves, Missouri

MARIE LIES
Andale, Kansas

MARGARET VERKAMP
St. James, Missouri

MARJORIE HAMBROUGH
St. Louis, Missouri

MILDRED KENNEDY
New Orleans, Louisiana



In Her Classroom



Freshmen

BERNICE LINNS
St. Louis, Missouri

JULIANNE GRAFEMAN
St. Louis, Missouri

MARGARET LURO POLD
Webster Groves, Missouri

BARBARA DISCHINGER
Normandy, Missouri

VIRGINIA MAE OWENS
Kansas City, Missouri

MARY AGNES BARRY
St. Louis, Missouri

MARY MATILDA SHEPHARD
Jerseyville, Illinois

BETTY WALSH
Taluca, Illinois

CECELIA CASEY
Breese, Illinois

VIRGINIA LEE DALY
Kirkwood, Missouri

MARY WHELAN
Raymond, Illinois

IRIS GARVEY
Vicksburg, Mississippi

MARGARET GRAF
St. Louis, Missouri

PEGGY SHERIDAN
Webster Groves, Missouri

MARY ETHEL DURNING
St. Louis, Missouri

BETTY IEANNE PRATTE
Festus, Missouri

GERALDINE RIORDAN
St. Louis, Missouri

REGINA RICE
Denver, Colorado

MILDRED BORN
St. Louis, Missouri

ANITA POTTHAST
Greenville, Illinois

MARY ELOISE JARVIS
Harrisburg, Illinois

MARIAN AMES
Webster Groves, Missouri

MARGARET STUPPY
St. Louis, Missouri

DOLORES ARDOYNO
Mobile, Alabama

MARY NELLE TYRELL
St. Louis, Missouri

HELEN MARIE STEPHENSON
Superior, Nebraska

MARTHA LOU LEAHY
Pawhuska, Oklahoma

The Webster Girl

On Her Campus

Many people know Webster for her high rank among institutions of higher learning. However, those who are more closely associated with Webster, know that she also offers many social advantages to her students. To deviate from the seriousness of classes and home work, various class parties, banquets, teas, May Days, and costume affairs form each year a chain of happy memories which will never be forgotten by The Webster Girl. These affairs result from Webster's realization that, to produce the well-rounded educated woman, there must be hours such as these to give wider experiences and interests.

Enthusiasm for these carefully planned events is in no way diminished from year to year; they are eagerly anticipated from month to month.

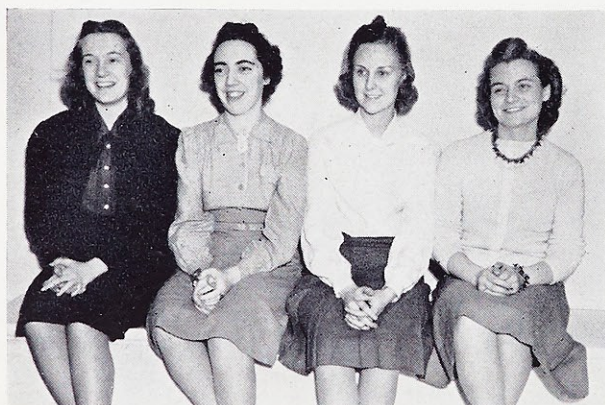


The Webster Girl

Loretto Players



First Row—J. Hyde, J. McAuliffe, F. L. Rothermich, M. E. Baker
 Second Row—B. Perez, E. Reid, M. M. K. McMahon, M. Belt, M. L. Fitzgibbons



Little Theatre stars.

OFFICERS

- | | |
|--------------------------|---------------------------|
| President | Marjorie Belt |
| Vice-President | Dorothy St. John |
| Secretary | Beatrice Perez |
| Treasurer | Marie Finke |
| Executive Chairman | Frances Louise Rothermich |

This year the Loretto Players continue on their way to greater heights, adding to their already well founded and well established reputation.

The number of girls participating in dramatics varies from sixteen to twenty-five. With such a small class it would seem a great undertaking to put on a Shakespearean production as professionally as do the Loretto Players. However the girls become so versatile under the direction of Mrs. Anna McClain Sankey that they are able to portray, with facility, the most difficult type of character created by Shakespeare. If the characters in the play outnumber the girls in the class, dual roles are played by the actresses. This year "Taming of the Shrew" was presented on the Webster College stage to a very appreciative audience.

On Her Campus

Loretto Players

The Loretto Players spend much time in practice, planning costumes, and in learning the difficult technique of stage lighting.

This year two scenes from "Taming of the Shrew" were presented at the Monday Club of St. Louis. Its members had heard praiseworthy accounts of Webster's Shakespearean productions and they were anxious to see a performance.

In December, at the request of the faculty, the dramatic students presented the religious drama, "Holy Night," written by Martinez Sierra. The religious atmosphere which prevailed throughout the play was very impressive. Costume creations by Margaret Breen heightened the dra-

matic effect of the play. It was a very inspiring production.

In March, the Freshmen dramatic students presented a three act comedy, "Imaginary Invalid," by Molière. This rollicking comedy was in direct contrast to the production, "Holy Night"; it was extremely hilarious. The action was swift as the play moved rapidly from one comic scene to another. The Freshmen displayed their versatility by taking the parts of both men and women.

The Loretto Players had three successful plays to their credit this year, and they are looking forward to even greater success next year.



V. M. Owens, A. Drake, L. DeRoy, S. Monti, M. Kientzy

The Webster Girl

Vodvil

With Webster girls showing their versatility in songs, dances and comic skits, this year's Vodvil was presented with more than usual success. The stage of the Little Theatre was transformed into a Fairgrounds and for three nights a New York atmosphere prevailed at Webster College. "Fair Enough," as the Vodvil was called, was a direct steal from Grover Whalen's big New York carnival. Even the Trylon and Perisphere were there.

The well laid plans of the Happy Travel Service went awry as a strange array of passengers bound for the Fair boarded the day coach. The confusion and turmoil of this eccentric group provoked a laugh a minute, but this hilarious scene was only a preview of the laughs, thrills and excitement to come.

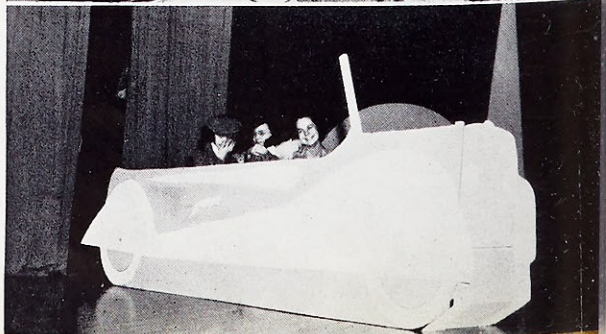
Anxious not to miss a thing our travelers hurried to the "Mis-Information" Booth. Among the host of information seekers trailing across the stage were an explorer, a southern girl, a gangster and even a swimming protege of Four Corners, Kansas. To the amusement of the audience, they were all properly misinformed.

The Aquacade stopped the show every evening. It may have been the 1910 bathing suits or it may have been the expressions on the faces of the bathing beauties which drew the laughs, but whatever it was the audience loved it and called for encore after encore.

An especially beautiful scene was the Court of the Moon in which a ballet was featured. The Choral Club, too, contributed its part in making the Vodvil a success with renditions of *Ciribiribin* and the *Italian Street Song*.

The Club Friviera full of glamor girls and handsome men offered a bit of night life.

The show ended with the whole cast marching up the aisle singing *The Fairest of the Fair*, a song written especially for the Vodvil by Reverend Daniel A. Lord, S. J.



Top picture—Try-on and perisphere.

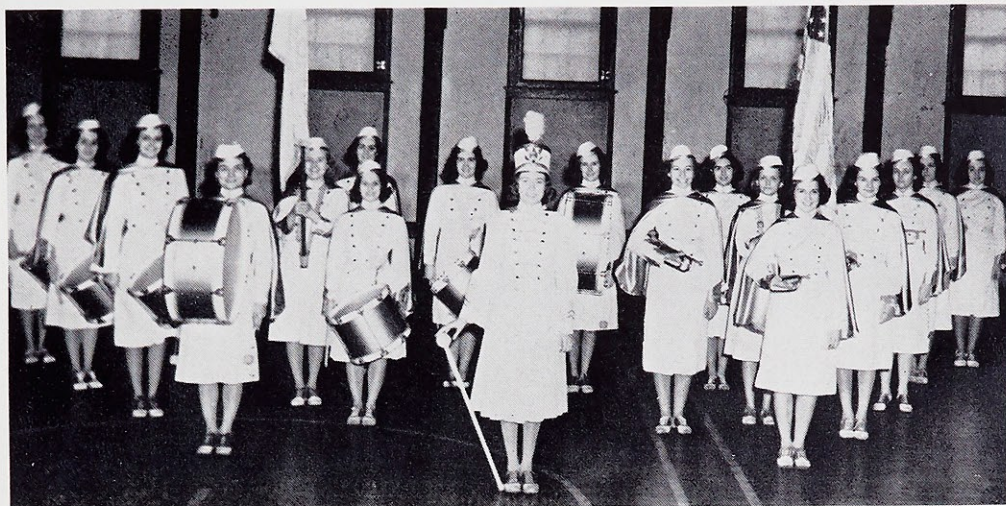
Second picture—Stepping off to the Fair.

Third picture—Webster's wild and woolly Westerners.

Lower picture—Webster's fair sightseeing New York's Fair.

On Her Campus

Drum and Bugle Corps



Formation "W," as in Webster.

The Drum and Bugle Corps entered last fall upon the third year of its existence; it has shown, by its readiness to cooperate in all activities, the splendid school spirit that pervades every part of Webster's campus.

Under the able leadership of Drum Major Pat Costello, the membership of this organization has been increased until now it numbers twice as many members as it did at its initial appearance. It made its first appearance of the year, in October, when in conjunction with the Webster Groves Post of the American Legion, a patriotic ceremony was held on the college campus. Its second performance was staged during the Fontbonne-Webster basketball game, when, during the intermission, they added to the usual number of their formations, that of the letters—W and F. Saturday, April 20, the college corps, with other associations, participated in a civic parade sponsored by the Mayor of Webster Groves.

The Drum and Bugle Corps made its final appearance for this scholastic year on May 30, when they led the Student Body of Webster College, in procession, to the Memorial Statue at Old Orchard, to pay honor to America's war heroes.

The members of the Drum and Bugle Corps are: Pat Costello, Drum Major, Marian Schmidbauer, Lorraine Knese, Frances Louise Rothermich, Mary Jane Houlihan, Dorothy Ghio, Mary Frances Knod-elseder, Mary Ethel Durning, Loretta Corbett, Rosalie Brennan, Julia Chapman, Aleen Messick, Florence McKinlay, Virginia Riehemann, Peggy Quick, Mary Elizabeth Hoffmeister and Helene Knapp.

The Webster Girl

Formal Dinners

The Formal dinner held at the Missouri Athletic Association on January 25 marked another high light in Webster's social season. This dinner, given in honor of the Seniors, was sponsored by the Webster College Women's Club.

The Websterites, after having spent a week taking exams, and three days making retreat, were again their sparkling and rhythmic selves.

Midnight came all too quickly for the gay diners, for with the strike of the clock and "Auld Lang Syne," the triple red-letter day and the 1940 dinner slipped away leaving many fond memories.

The Christmas Banquet was another social high light of the year. The lay faculty and students were guests of Mother Edwarda and the Junior Class at this Banquet. Following the dinner in the College Cafeteria, the Seniors were presented their class pins by Dr. George F. Donovan.

Immediately following this traditional presentation, the group moved to the Social Hall where the gayety of the evening was heightened by the Christmas entertainment.

To the tune of the Triumphant March from "Aida" their majesties, King and Queen Santa Claus, preceded by the Court entertainers, marched to the Royal Throne of the Winter Palace. Late comers to the Court were Two Sleepy Heads who shyly presented themselves to Santa and asked to see a preview of their toys. Obliging the mechanical dolls, the French doll, the wooden soldiers, and Jack-in-the-box performed. The dwarfs assisted their King in distributing gifts to the faculty members and to the members of the Freshman Class.



The Formal Dinner in January.

On Her Campus

May Day

The loveliest occasion of the social year was held on May 26 at the south side of the campus. This scene of sparkling beauty captivated all who witnessed it for as the herald proceeded down the path to the throne a hush came over the spectators. The Maypole Dancers, led by Miss Patricia Costello, entered in colorful and picturesque dancing frocks. Miss Eileen Reid and Miss Ruth Rummelhart next appeared as specialty dancers. After these had taken their places the long-awaited Court was announced. Miss Rosemary Boehm, the retiring queen, entered preceded by her little flower girl. The members of the Court followed: Jean Gillespie, Dorothy Henderson, and Eleanor Merkel representing the Senior Class, Mary Margaret Koenitz and Loretta Corbett, the Junior Class, Jane Hyde and Jean Raymond, the Sophomore Class; and Charlotte Braun, the Freshman Class.

The herald announced with joyous notes the arrival of the new Queen of Love and Beauty, Miss Marjorie Belt, a member of the Junior Class. As she proceeded down the path preceded by her tiny flower girl, Nancy Jane Hines, and her crown bearer, Jimmie Byrnes, she was a picture of gracefulness and loveliness, a true Webster Girl. At the throne she was received and crowned with flowers by Rosemary Boehm.

Entertainment for the Queen and her Court followed. As the ceremonies drew to a close, punch and cake were served on the campus.

The sun went down and the traditional May Day was over; thus ended our beautiful annual campus ceremony.



Queen of love and beauty.

The Webster Girl

Educational Tour

On March 25, a group of twenty-seven girls left St. Louis on the second annual educational tour, this year to New Orleans and the Gulf Coast. The girls arrived back in St. Louis March 31 with a happy memory of the enchanting, romantic, and fascinating South. The students were accompanied by two faculty members, Miss Mary Killian and Miss Helen Pancerz.



Itinerary

Monday—Our party left St. Louis Union Station at 1:00 P. M. and arrived in Memphis about 10:15 P. M., where there was time for a stroll before retiring.

Tuesday—We arrived in New Orleans at 9:00 A. M. and went immediately to the St. Charles Hotel. At 1:30 P. M. we boarded the steamer Capitol for an interesting thirty-mile trip around New Orleans' Harbor. At 8:00 P. M. we left for dinner at the famous Arnaud's Restaurant, followed by a "slumming" trip through the gay Old French Quarter.

Wednesday—We had a motor sightseeing tour which acquainted us with the city and its many interesting points. We saw the business and residential districts, St. Louis Cathedral, Spanish Cabildo, Old St. Louis Cemetery, New Orleans Airport, and Audubon and City Park. The tour was climaxed by a visit to Archbishop Rummel's home. At 7:00 P. M. we went to the beautiful and famous Hawaiian Blue Room in the Roosevelt Hotel. Our escorts for the delightful evening of dinner and dancing, were boys of Loyola University. Jimmy Dorsey's orchestra furnished the music.

Thursday—We left New Orleans at 8:00 A. M. for the Gulf Coast, soon arriving at Inn-By-The-Sea, a picturesque resort of the South. From there we went by private motor cars along the Gulf Coast. We stopped at the beautiful Edgewater Gulf Hotel for lunch, then on to Gulfport, and Pass Christian, stopping at the interesting old home of Jefferson Davis, and at 3:30 P. M. arrived at the Biloxi Hotel. That evening we attended a replica of the Mardi Gras Ball held in New Orleans each year.

Friday—The fifth day was spent in the various diversions of a resort center, namely, bicycle riding, sailing, and archery.

Saturday—Leaving Biloxi at 11:00 A. M., we started home. We stopped at Mobile, Alabama, where we were met by the Sisters of Loretto and by the Bishop Toolen High School Band. In Montgomery, Alabama, the Governor's representatives greeted us with a bouquet of beautiful roses. Eight Sisters of Loretto awaited us, too, to welcome us to this beautiful city.

Sunday—We arrived in St. Louis at 11:30 A. M. after a most exciting and memorable trip.

On Her Campus

Educational Tour

Top picture—The Webster College tourists pay a visit to the Mayor's office in New Orleans.



Middle Picture—First glimpse of New Orleans, as Dorothy Ghio, Mary Elizabeth Hoffmeister and Mary Annette Drake alight from the train.



Lower picture—Checking advance publicity; the New Orleans' paper takes note of the Webster Tour.



The Webster Girl

Web



A. Ritch, V. Riehemann, A. Hof, L. Corbett, M. Peters, T. Dudenhoeffer, M. Grant, M. E. Hoffmeister

OFFICERS

- Editor Florence Baxter
Assistant Editor . . . Thelma Dudenhoeffer
Associate Editor Ann Ritch
Business Manager . Mary Elizabeth Hoffmeister
Circulation Manager . Martha Jane Barnes
Assistant Circulation
Manager Dolores Ardoyno
Athletics Eileen Reid



Weaving the Web.

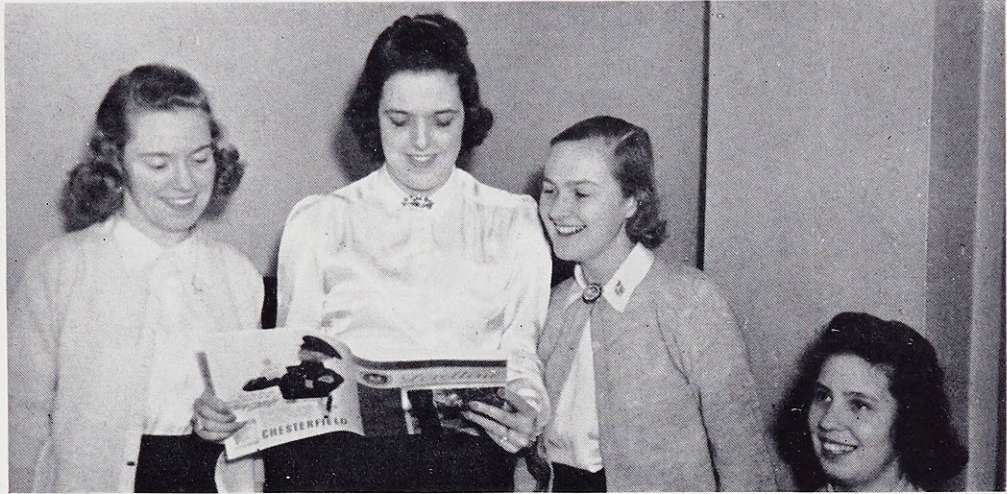
This year the Web celebrates its twentieth anniversary. Two decades have seen its evolution from a two column mimeographed sheet to its present state of journalistic perfection, a five column, four page semi-monthly publication boasting streamlined type. It is a member of the Catholic Press Association and has received All-Catholic honor awards for the past few years.

The Web is wholly a student production, written and edited by the students under the direction of a capable moderator. It offers to the students interested in journalism as a career excellent opportunity for training in this field. It gives them practice not only in gathering news but also in editorial work and column writing.

The Web through its editorial page accomplishes its purpose as a leading factor in the school. Through its news columns it acquaints its readers with up-to-the-minute information concerning Webster College. Entertainment is furnished by its numerous feature articles and social columns.

On Her Campus

Loretine



P. Costello, N. Allison, M. J. Houlihan, E. Pollmann

The Loretine, the literary quarterly of Webster College, has been an outstanding publication in the school since its debut in 1916. It publishes not only the literary accomplishments of Webster College students, but also guest articles and editorials by outstanding writers.

The November issue of the Loretine is always written and edited by members of the Alumnae. Jean Henning, class of '38, and editor of the Web in '39, served as editor of this year's Alumnae Edition. Its theme was "Careers".

This has been a banner year for the Loretine. In November it emerged in its new silver cover, a tribute to Webster College's silver anniversary. The quality of its material in the past year has also had its share of appreciative comment.

All the articles of the last edition will be centered around the Blessed Mother, the patron and model of Catholic womanhood.

The purpose of the Loretine is to serve as an incentive to those students interested in literary composition.

OFFICERS

Editor Elizabeth Pollmann

Business Manager Mary Jane Houlihan

Advertising Manager Patricia Costello

Art Editor Marjorie Belt

Jo Raftery

Mary Courtney Jones

Florence Baxter

Roberta Irwin

Mary Galbraith

} Reporters

The Webster Girl

Lauretanum



T. Dudenhoeffer, B. Hellinghausen, J. Hyde, A. Hof, C. Allhoff

OFFICERS

Editor Jane Hyde
Assistant Editor . . . Thelma Dudenhoeffer
Business Manager Cecelia Allhoff
Advertising Manager Ann Hof
Circulation Manager . . Betty Hellinghausen
Sports Editor Eileen Reid



Staff strategy.

The Lauretanum Staff presents to you your year book showing qualities and activities of the Webster girl who, we believe, lives up to the standards which we have herein set forth. Because we know the true Webster girl will appreciate this book and will hold the memories it portrays dear to her heart, we feel that the many happy hours we have spent preparing it have not been in vain.

We know, too, that the Sisters will appreciate our book because they have tried to instill into us the qualities that make us Webster girls. Under their guidance we have tried to profit by our Catholic education.

Within these pages are presented the social, scholastic, campus, athletic and spiritual life of the college. We have attempted to show Webster as it is today, a liberal arts college of the highest degree, and we have tried to portray the Webster girl as she is today, a strong, faithful supporter of faith, culture and morals.

On Her Campus

Co-operative Association

Under the supervision of Reverend George McDonald, S. J., of the Queen's Work, Webster College started its Co-operative Association in the fall of 1936. Both boarders and day students take advantage of the opportunities offered by the "coop" store in Loretto Hall to secure for themselves and for their friends useful articles at bargain prices.

Any student in school may become a member of the Association, which is based on the sound principles of business enterprise. Shares are sold and interest and dividends are paid to members in the manner of big business corporations.

Participation in the work of the organization gives the student an insight into business transactions of the world today. Shares, interest, profits

BOARD OF DIRECTORS

President Beatrice Berez
Vice-President Virginia Ann Driscoll
Secretary-Treasurer Mary Courtney Jones
General Manager Mildred Peters

are all discussed with as much facility as if the members were real business men.

The Association is eager to increase its membership and so it extends an invitation to all who are interested in this project to join their group.



B. Perez, M. Kientzy, V. A. Driscoll, M. C. Jones, M. Daniels, F. L. Rothermich

The Webster Girl

In Her Activities

Realizing that "all work and no play makes Jane a dull girl," the members of the faculty of Webster College have arranged a well-balanced program. As a result, there is a wide variety of extra curricular activities, ranging from the glare and splendor of the Drum and Bugle Corps to the dignity and erudition of the Classical Club. This schedule provides an opportunity for each girl in the school to participate in that activity which she enjoys most. This active interest in such clubs and organizations gives the student a broad perspective, a friendship with those who share her interests, and a confidence in herself and her ability. The result is the well-balanced Webster girl.



The Webster Girl

Student Government Association



Seated—A. Ritch, A. Hof, M. L. Hyde, J. Hyde
Standing—M. Ware, H. Ritter, P. Quick, V. Riehemann, H. M. Stephenson, M. M. Ritter, E. Pollmann,
R. M. Spalding, V. A. Driscoll, J. Morris

OFFICERS

President Mary Louise Hyde

Vice-President Ann Hof

Secretary Ann Ritch

Treasurer Jane Hyde



Student Government leaders

The Student Government Association has been authorized by the faculty to exercise partial legislative, executive and judicial powers. These powers are invested in the Student Government Board.

Broadly speaking the duty of the Association and its governing body, the Board, is two-fold: first, to sponsor all social affairs and to regulate discipline; and, secondly, to maintain and forward ideals of cooperation on the part of all students, and to insure an intelligent understanding of student duties, obligations, rights and privileges.

The Student Government Board revised the old constitution this year and then submitted it to the faculty and to the students for their approval. The revised Constitution will appear in the new Student Guide Book which will be distributed in September.

Officers of the Association are the president, the vice-president, the secretary, the treasurer, the Student Government Board, the Dean of Studies, and the Dean of Women. Each class is represented on the Board, thus assuring justice to all.

In Her Activities

Sodality



Seated—M. J. Greenslade, M. Ware, A. Hof, M. C. Jones
Standing—P. Quick, C. Beine, V. Riehemann, M. M. Ritter, L. Rummel, M. Peters, M. E. Durning,
M. L. Hyde, A. Ritch, B. Perez

At Webster College, the Sodality of Mary, which emphasizes active Catholicity and personal holiness, is a complement to the moral training of the class room. The seven committees of the Sodality, namely, the Eucharistic, Our Lady's, the Apostolic, the Publicity, the Catholic Literature, the Social Problems, and the Parish Committees, function actively during the year.

The Sodality is a member of the St. Louis College Sodality Union and is affiliated with the Prima Primaria in Rome.

This year the Sodality Bulletin which made its first appearance during last year, was christened the "Sodalite," and has appeared semi-monthly since that time. The prize-winning name for the paper was submitted by Bobbie Irwin in a contest sponsored by the Sodality.

All acknowledge that the monthly meetings sponsored by the various classes during the second semester were largely responsible for the great strides made by the Sodality at Webster this year.

The Sodality May Crowning in May came as a fitting close to the year.



A visit to the Chapel

OFFICERS

Prefect	Marion Ware
Vice-Prefect	Ann Hof
Secretary	Mary Courtney Jones
Treasurer	Mary Jane Greenslade

The Webster Girl

C. S. M. C.



Planning for the orphans.

OFFICERS

- President Mildred Peters
- Secretary Cecelia Beine
- Treasurer Mary Catherine Phelan

The Nancy Havern Unit of the Catholic Students Mission Crusade has, for the second year, worked in collaboration with the Sodality as a Committee, rather than as a separate unit. Thus, contact with the entire student body can be maintained at all times.

The purpose of the organization is to promote spiritual, financial, and educational activities among its members and to work for Home and Foreign Missions.

By collecting Catholic magazines, comic sheets, and old stockings, by filling baskets for the poor at Christmas, and by entertaining orphans at St. Ann's Orphanage, the students have done much to bring happiness to those less fortunate than they and to further the purpose of the organization. All work done by members of the C. S. M. C. is entirely voluntary.

This year the Unit donated to the Propagation of the Faith, to the Home and Foreign Missions, to the Indian Missions, to the Catholic University of Peking, and subscribed to various Mission magazines.



Standing—M. C. Phelan, C. Carroll, C. Beine, C. M. Jacobsmeyer, M. C. Jones
Seated—M. Peters

In Her Activities

Orchestra

The Webster College Orchestra, in the ninth year of its existence, has completed a successful season. It has presented, with marked proficiency, some of the masterpieces of Victor Herbert as well as other selections of lyric beauty. This extracurricular activity meets weekly; the presence of all members proves that each is eager to contribute her share to make the performances successful.

At the Service Clubs' Banquet, two solos were played by members of the orchestra which were thoroughly enjoyed as was the number by the newly-organized quartet.

This organization made its final appearance on Baccalaureate Sunday, when to the strains of a well-known march, the Seniors, followed by the student body, took their places in the auditorium for the program of the day. This finished, the orchestra found a fitting close for its year's activities in the rendition of the college school song, "Hail to Webster College".

Ruth Rummelhart	Piano
Edna Catherine Ahern	} Violins
Victoria Tessmer	
Julia Adel Chapman	
Cecelia Allhoff	
Dorothy McKinlay	
Cecilia Casey	} Cellos
Florence McKinlay	
Phyllis Hillemeier	Bass Fiddle
Margaret Verkamp	} Clarinets
Betty Jeanne Pratte	
Mary Matilda Shepherd	Drums
Helen Marie Stephenson	Xylophone
Eloise Jarvis	Flute
Lillian Gallagher	Saxophone



Music in the making.

The Webster Girl

Music Guild



Third Row—E. Jarvis, P. Hellemeyer, V. Tessamer, C. Jackobsmeier, L. Rummel
Second Row—M. L. Kegriss, R. Gilledge, M. C. Jones, M. M. Ritter, M. Galbraith, R. Rice, M. Daniels
First Row—C. Allhoff, R. Rummelhart

The Music Guild at Webster is composed of girls who are majoring in music but it admits to its numbers any girl interested in the cultural value of music. This year, the members of the Music Guild have been studying the opera. The story of Bach is told and explained, the arias are played and studied, and the life of the composer is discussed.

A tea given in honor of Miss Anatasia Schleuter, concert pianist and member of the class of '37, was the outstanding event of the Guild's activity this year.

The closing concert of the Music Guild is held in May. The Works Progress Administration Orchestra, under the direction of Frank Panus, furnished the background for violin and piano solos.

The Music Guild's members with the other Music Organizations sponsor a very enjoyable banquet at the close of the scholastic year. This group represents those who are interested in and who love the beautiful art of Music.



Silent admirer.

OFFICERS

- President Ruth Rummelhart
Vice-President Cecelia Allhoff
Secretary-Treasurer Sister Joan, O. S. U.

In Her Activities

Choral Club



First Row—R. Gulledge, R. Rummelhart, M. L. Kegriss, M. Peters, E. Jarvis, C. Braun, H. M. Stephenson
Second Row—M. A. Barry, R. F. Wynn, M. Kientzy, E. Reid, R. Brennan, L. Gallagher
Third Row—J. Hyde, M. C. Jones, D. Buergler, M. E. Baker, M. E. Durnong, R. Hentzen, J. Chapman,
S. McKinlay, R. M. Spalding, M. J. Nolan, A. Hof
Fourth Row—B. Hellinghausen, C. Jackobsmeyer, L. Rummel, M. J. Greenslade, M. C. Phelan,
R. Rice, M. E. Sullivan, M. A. Lingner, M. Graf.

OFFICERS

President Mary Loretto Kegriss

Vice-President Ruth Rummelhart

Secretary-Treasurer Mildred Peters



Happy songsters.

This year finds the Webster College Choral Club in its twelfth year of successful existence. Any student, interested in voice work, may try out for membership in this group. Meetings are held twice a week, at which all members are required to be present. The initial appearance of the club this year was made at the annual student Vodvil when *Ciribiribin* was sung.

In October, the Little Sisters of the Poor celebrated their centennial; on this occasion the club sang the benediction in their chapel.

On March 13, the Forty Hours opened with High Mass sung by the club. At the closing of the Music Conservatory, Psalm 150 by Caesar Franck was presented, accompanied by the Little Symphony of St. Louis.

Among the social events of the season were: a party for the St. Louis University Glee Club, the Music Organization Banquet, and a shower for its secretary-treasurer, Mildred Peters, who will be married in the late fall.

The Webster Girl

Classical Club

Through the reading of papers and systematic discussions, the members of Sigma Epsilon Rho, or the Webster College Classical Club, find a means of studying classical authors and phases of the classics not included in the scholastic curriculum.

Latin and Greek majors and minors and all students who have completed one semester of college work in the classics may be members of the club.

Sigma Epsilon Rho is allied with the St. Louis University Classical Club, and participates in the monthly meetings held at the University or at one of the Corporate Colleges. In March, Webster Classicists were hostesses to the St. Louis University Classical Club at a tea held in Social Hall.

The rotating system of election used by the University Classical Club provides for a Webster representative in its body of officers each year. This year Miss Elizabeth Pollmann was the Treasurer of the Club.



Waiting for a Classical idea.

OFFICERS

President Florence Baxter

Vice-President Dolores Rakers

Secretary-Treasurer Cecelia Beine



F. Baxter, V. Riehemann, P. Costello, E. Harter, E. Pollmann, D. Rakers, M. Graf, M. Ware, M. Neville, M. Daniels, M. L. Hyde, R. Irwin, G. Reisch, G. Meder, A. Hof, C. Beine

In Her Activities

Le Cercle Francais

OFFICERS

President Marion Ware

Vice-President Dorothy Ghio

Secretary-Treasurer Mildred Peters

Le Cercle Français is one of the most active organizations of Webster College. Its purpose is to acquaint the students with the French language and to furnish an opportunity for more intense study of the history and customs of France.

The meetings are held bi-monthly under the direction of its moderator, Monsieur Christian Bonnet. Reports are given at each meeting and discussions follow. The first meeting of Lent each year is spent in studying something of the Lenten customs of France. This year Mary Frances Knoedelseder and Mildred Peters presented interesting and informative reports. Le Cercle Français also sponsors a paper, "La Voix", which is distributed three times a year.

Members of the organization are recruited from the French classes, although anyone who has completed a year of college work in the language may join.

Le Cercle Français closes its activities at a joint meeting with the Cercle Français of St. Louis University during which a program is presented.



Parlez-vous Francais?



First Row—F. L. Rothermick, D. Ghio, M. Ware, M. Bonnet (sponsor), M. Peters, R. Nestor, M. Schlingman
 Second Row—V. Riehemann, T. Dudenhoeffer, S. Monti, M. Graf, M. Nevelle, M. L. Leahy, J. A. Rozier
 Third Row—D. Rakers, P. Quick, D. Cantalen, M. Born, D. Buergler, G. Riordan, B. Perez, J. McMahon
 Fourth Row—C. Beine, B. Dischinger, P. Costello, J. Dick, M. E. Mansfield, M. F. Knoedelseder,
 L. Maher, M. Stuppy

The Webster Girl

Spanish Club



Seated—M. A. Barry, F. McKinlay, G. Meder, I. Garvey, P. Costello, A. Drake, M. N. Tyrell, M. J. Barnes
Standing—N. Allison, H. Ritter, M. J. Nolan, M. Klees, E. Harter, M. L. Kegriss, M. Galbraith,
V. L. Daly, D. Buegler, M. Daniels

OFFICERS

President Natalie Allison

Secretary-Treasurer Helen Ritter



Pan-Americanizing.

El Centro Hispano-Americano, the Webster College Spanish Club, meets bi-monthly in the Spanish room. Through a study of the life, literature, and customs of the Spanish people the club stimulates interest in the language and promotes a realization of the cultural and commercial value to be derived from it.

On Pan-American Day the Spanish Club sponsored a special program in the College auditorium for the benefit of the entire school. The unique quizz session was thoroughly enjoyed by both faculty members and students.

One of the outstanding meetings of the year was the informal buffet supper held in May in Social Hall. This year the Spanish Club joined the Loretto Players in giving their party. The beauty of the Spanish decorations, the charm of the entertainment and the excellence of the characteristic food, all combined to make the closing meeting of El Centro Hispano-Americano the most enjoyable of the entire year.

In Her Activities

International Relations Club



M. F. Knoedelseder, A. Hof, P. Quick, V. Riehemann, R. Irwin, M. L. Hyde, A. O'Neil, Dr. Donovan (sponsor), M. Daniels

The International Relations Club was organized at Webster College four years ago to foster a better understanding of foreign nations through the study of various books dealing with world-wide problems.

The Club, with Dr. George F. Donovan as moderator, holds monthly meetings to discuss leading political questions of the day. The subject of discussion in most of the meetings was the war in Europe or in the Far East. The February meeting was given over to a discussion of European and American relationships, while the April meeting concerned the position of Christianity in the world today.

The membership of the club is limited to twelve Juniors and Seniors, this restriction being necessitated by the amount of time required for preparation and discussion of the material for the meetings. The Club has been instrumental in promoting a pronounced interest in matters dealing with the field of International Relations.



World affairs are so confusing!

OFFICERS

President Mildred Daniels

Vice-President Mary Frances Knoedelseder

Secretary Roberta Irwin

The Webster Girl

Chemistry-Biology Club

At the beginning of the school year of 1938-39, the Club, formerly known as the Chemistry Club, was re-organized. This re-organization, through the admission of the Biology students, doubled the size of the Club. The new group was christened the Chemistry-Biology Club.

The membership of this Club includes those who are interested in the sciences and who have completed at least one year of study in Biology or Chemistry.

A number of prominent lecturers made the meetings both interesting and enjoyable. Among these were Dr. E. P. Brady, who talked on "Hygiene"; Dr. John Campbell, whose subject was "Instincts and Animal Behaviour"; Dr. Philip A. Katzman, whose subject was "Hormones". Another inspiring meeting featured talks by members of the Club.

The Chemistry-Biology Club intends to continue the practice of joining the Mathematics-Physics Club for an all day picnic on Ascension Thursday.



"Now let's try some of this."

OFFICERS

- President Mary Martha Ritter
 Vice-President Helene Knapp
 Secretary Dorothy Ottens



First Row—D. McKinlay, D. Bulfin, M. M. Ritter, J. Kavanaugh, M. L. Fitzgibbons,
 V. Chapman, S. L. Spalding, C. McCann
 Second Row—H. Thurmond, L. Knese, B. Burke, A. Potthast
 Third Row—M. J. Greenslade, M. Ward, R. Brennan, M. Grant, A. O'Donnell, B. Walsh,
 D. Ottens, H. Knapp, C. Jacobsmeyer

In Her Activities

Mathematics—Physics Club

OFFICERS

President Mary Courtney Jones

Vice-President Loretta Corbett

Secretary-Treasurer Mildred Peters

The Math-Physics Club was organized only a few years ago, but since that time it has made rapid progress under the direction of Sister Mary Borgia, its moderator. Sister Mary Germaine, who again joined the Mathematics and Physics Department in 1938-39, has also made valuable contributions to the Club.

The Club holds its meetings on the fourth Wednesday of each month. This year the meetings have been very interesting, for the members have studied Mathematics and Physics as expressed in the field of Education. Papers on scientific subjects were read and discussed. These proved interesting and instructive to all and should be especially beneficial to those members who intend to become teachers. Other talks during the year dealt with the knowledge of the history of mathematics. Some of these were very novel in that they were based on the theses of former students.



Problem children.



M. E. Hoffmeister, M. M. Ritter, D. McKinlay, M. Peters, M. C. Jones, L. Rummel, E. Furi,
L. Corbett, D. Rakers, P. Quick, R. Brennan

The Webster Girl

Press Club



M. E. Hoffmeister, F. Baxter, L. Corbett, M. Belt, J. Hyde, E. Furi, E. Pollmann, E. Harter, P. Quick, A. Hof, V. Riehemann, C. Allhoff, P. Costello, B. Hellinghausen

The purpose of the Webster College Press Club is to improve the standards of journalism in our Catholic publications. All staff members of the Web, Loretine and Lauretanum, and all students of the journalism class are members of the Club.

The outstanding undertaking of the Press Club this year was the formation of the Mid-West Catholic High School Press Association and its inaugural convention which was held at the College on Saturday, February 10. Two hundred fifty-three delegates from five states were in attendance on this occasion. Reverend D. A. Lord, S. J., addressed the group at the luncheon and prominent newspaper men from the St. Louis dailies conducted group meetings throughout the day.

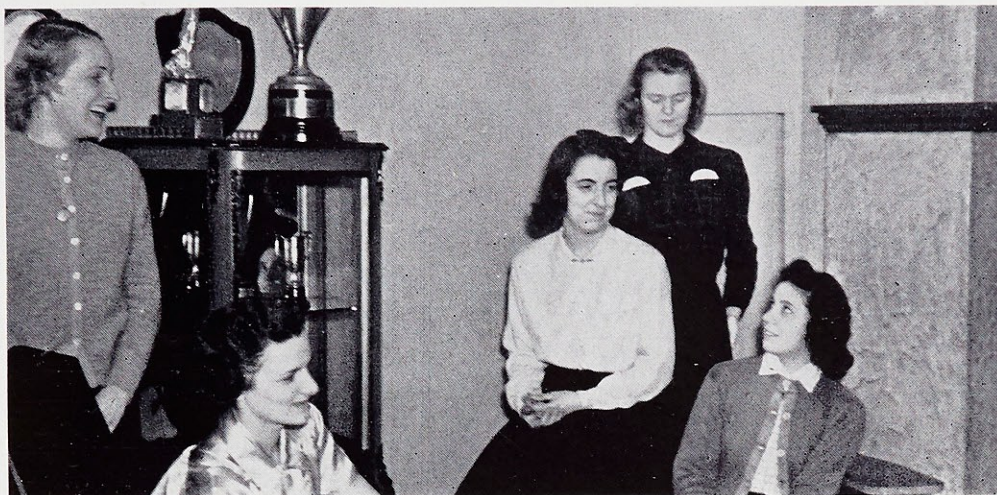
The Mid-West Catholic High School Press Association hopes to promote co-operation between Webster College and the high schools; to elevate the standards of journalism in our Catholic schools by offering consultation service; and to provide social contacts for staff workers.

OFFICERS

President	Ann Hof
Vice-President	Virginia Riehemann
Secretary	Peggy Quick
Business Manager	Virginia Ann Driscoll

In Her Activities

Athletic Association



G. Meder, Miss Pancarz, B. Burke, M. J. Greenslade, E. Pollmann

OFFICERS

- President Elizabeth Pollmann
Vice-President Gloria Meder
Secretary Mary Jane Greenslade
Treasurer Betty Burke

The Athletic Association directs all sports activities of Webster College in connection with the Physical Education Department. The purpose of a well-balanced curriculum is to promote health, sportsmanship, scholarship, and skill among students. Membership is extended to all girls in the school. Those girls who have made one thousand points by active participation in the sports belong to the closed Association. These girls receive their letter, a gold W.

The Association sponsors an inter-collegiate basketball schedule and an inter-class tournament in the various competitive sports. All students are eligible to participate.

Sports participated in by the members of the Association include ping pong, volley ball, horse-back riding, hiking, tennis and track.

The outstanding event of this Association is the Athletic Banquet attended by the entire student body. Awards are presented to the girls who have excelled in sports; a plaque is given to the class that has won the tournament.



How Webster spells "Victory."

The Webster Girl

At Sporting Play

A Websterite realizes that physical fitness is as important as mental health. With this thought in mind she delves into Webster's active athletic program with vim, vigor, and vitality.

While taking part in different sports, the Webster girl's motto is, "always be a good sport." Realizing this, she has learned to be a good loser as well as a good winner.

There are some who cannot take active participation in athletics, but their attendance at all the games and their definite interest in the track and field meets, spur the more active athletes on to certain victory.

Enthusiasm never lags in victory or defeat; fair play, plus good sportsmanship is our aim.



The Webster Girl

Basketball

As in former years, basketball takes first place among the outstanding athletic activities at Webster. The first practice was scheduled for January 4; Webster basketball enthusiasts turned out from each class. One had as good a chance as the other to make the Varsity team, so each one supplied our new athletic directress, Miss Helen Pancerz, with a variety of ways to play basketball.

After weeks of practice, the Varsity team was chosen. The lucky "13" were as follows: Mary Louise Hyde, captain; Elizabeth Pollmann, Jane Hyde, Margaret Ward, Catherine Carroll, Virginia Ann Driscoll, and Marian Klees as guards; Ann Ritch, Eileen Reid, Gloria Meder, Ann O'Donnell, Mary Jane Greenslade, and Margaret Stuppy as forwards. Mary Louise Hyde has been captain of the team for two years. Under her capable leadership, Webster has been spurred on to many victories.

In addition to the Varsity, a Freshman squad was chosen to practice with the Varsity. This team was composed of Cecelia Casey, Margaret Pold, Iris Garvey, Barbara Gleason, Sarah Louise Spalding and Mary Ethel Durning.

The schedule of games interested all. The first game of the season was played at Fontbonne College, February 9, and resulted in a Webster victory, 38-17. The next scene of action was Webster's Gymnasium, February 16, where Harris Teachers' College bowed to Webster, 25-21.

February 23 marked the date of the return game with Fontbonne and Webster again came out on top, 33-7. The last game played in St. Louis presented Webster with hard fought competition, the St. Louis Hockey Club providing this opposition. It was the closest game of the season, the score ending in a tie, 20-20.



First Row—M. Klees, G. Meder, M. Stuppy, A. Ritch, E. Pollmann, Miss Pancerz (instructor)
Second Row—M. J. Greenslade, C. Carroll, M. Ward, M. L. O'Donnell, J. Hyde, E. Reid

At Sporting Play

On March 15, the Webster squad traveled by bus to Godfrey, Illinois, to meet the Monticello team. This was the last game of the season. The team played with all its strength and brought to Webster a score to be proud of indeed, 64-22.

Throughout the entire season, cheerleaders supplied us with yells and cheers which added zest to the games and encouragement to the team. Our cheerleaders this year were Iris Garvey, Lillian Gallagher and Mary Louise Fitzgibbons.

Sports in Summary

VOLLEYBALL . . . MANAGER, VIRGINIA ANN DRISCOLL

Volleyball opened the Athletic Season. Those who knew how to play and those who didn't, joined in the fun. Much laughter accompanied the ball as it flew into rafters and out of windows always open. However, four class teams issued forth from this scene of gayety. The Junior Class won the championship.

TENNIS . . . MANAGER, MELANIE SCHLINGNAM

Tennis supplied a great deal of amusement for those who participated. Most of the time was spent in waiting for the rain to stop, and the courts to dry. However, there were those who managed to run out between showers and hit a number of balls over the net into the few dry spots that were available.

HIKING . . . MANAGER, DOROTHY MCKINLAY

Throughout the year a number of groups gathered together and took hikes out into the country. These hikes were held on Saturday and school holidays. Good clothes and manners were discarded and a good time was had by all. They say hiking is good for the figure; perhaps that was the idea Webster had in mind when she formed the Hiking Club.

BOWLING . . . MANAGER, MARIAN VIERHELLER

Bowling is a lot of fun as the Webster girls agree. Every Friday afternoon the Webster girls put aside their street shoes and donned heavy bowling shoes. Teams were picked and the competition that resulted was well worth watching. Even though most of the players were beginners, they did manage at one time or another to break a hundred.

PING PONG . . . MANAGER, CECILIA BEINE

This delightful pastime provided fun and amusement for those who had the strength to pick up a heavy paddle. At almost any time, balls would go flying past one's head and sometimes the paddle followed. Most of the girls signed up for the tournament and showed their agility in handling a paddle.

BASEBALL . . . MANAGER, EILEEN REID

After the basketball season, when the weather permits, baseball comes to the fore. Brown and yellow suits, containing a Websterite, may be found on the field. Balls are caught, missed, thrown and lost. After a few weeks of practice the class teams are picked, and then the rivalry begins. The finals are played on Field Day.

The Webster Girl



As Others See Her

Autographs

Snapshots, reading down left side of page: 1. Putting a punch in the party. 2. Or maybe the rest of the world is crazy. 3. The ritual of caps and gowns. 4. Quartet—SANS song.

Small pictures: With the Webster caravan somewhere in the deep South.

Reading down right side of page: 1. No, we don't always dress like that! 2. Good skates sit down—on a bench. 3. Feeding time at the circus. 4. Now let's all concentrate!

Sponsors

Allhoff Brothers, Inc.

Mr. and Mrs. James E. Carroll

Dr. and Mrs. Thomas F. Maher

Dr. John F. McFadden

A Friend

Patrons

Mrs. Rosalie Brennan

Mr. and Mrs. F. F. Braun

Miss Helen Buckley

Mrs. D. M. Burke

Mr. and Mrs. J. J. Burke

Miss Eleanor Carroll

Mr. and Mrs. A. W. Finke

Mary Louise Fitzgibbons

Mr. and Mrs. W. E. Gauvin

Marion Lee Grant

Mrs. Thomas J. Kavanaugh

Mr. and Mrs. J. Held

Mrs. Martin Kientzy

Mr. and Mrs. H. A. Klees

Mr. and Mrs. L. H. Knese

Mary Louise McFadden

Mr. and Mrs. C. H. Morris

Mr. and Mrs. J. S. Neville

Mr. and Mrs. William V. O'Donnell

Mr. and Mrs. D. O'Regan

Mary Catherine Phelan

Miss Ida Schneiderhahn

Marian Vierheller

Mr. John Whalen

A Friend

Patrons

Mrs. F. A. Allhoff
Mr. and Mrs. A. Roy Allison
Mr. and Mrs. C. J. Baker
Mary Elizabeth Baker
Mr. and Mrs. C. R. Baxter
Mr. and Mrs. August Beine, Jr.
Mr. and Mrs. H. C. Blanton
Mr. and Mrs. G. T. Born
Mrs. L. A. Bowlin
Margaret Bishop Breen
Miss Anne Brady
Dr. and Mrs. E. P. Brady
Miss Catherine Buehler
Dorothy Buergler
Mr. and Mrs. J. C. Buergler
Mr. and Mrs. Thomas M. Chapman
Mr. and Mrs. Guy H. Condit
Dr. and Mrs. H. B. DePew
Mr. and Mrs. William Dick
Mr. and Mrs. Michael Dillon
Mr. and Mrs. Carl F. Dischinger, Jr.
Mr. W. T. Dooley
Miss Mary G. Dooling
Mr. and Mrs. A. H. Dudenhoeffer
Joan Dudenhoeffer
Dr. and Mrs. William H. Duncan, Jr.
Mr. and Mrs. A. W. Finke
Miss Mary Alma Fregeau
Mr. and Mrs. Mathias Furi
Barbara Gleason
Mr. James G. Graf
Mr. and Mrs. R. Greenslade
Mr. and Mrs. John F. Hanlon
George F. Harrington
Mr. and Mrs. Frank Harter, Jr.
Miss Moria Hayes
Mr. George F. Harrington
Mr. and Mrs. J. C. Hawkins
Mr. and Mrs. W. G. Hellinghausen
Miss Dorothy Henderson
Miss Jean Henning
Mr. and Mrs. J. J. Hoban
Mr. and Mrs. Fred Hof
Mr. and Mrs. A. C. Hoffmeister
Mr. and Mrs. David J. Hyde
Mr. James P. Hyde
Mrs. J. M. Janes
Mr. and Mrs. B. F. Jacobsmeyer
Mrs. Rosalia H. Jenneman
Mr. and Mrs. Hugh Jones
Junior Class of Webster College
Mr. and Mrs. B. H. Kennedy
Miss Mary Killian
Mr. and Mrs. James R. Knapp
Mr. and Mrs. Charles Knoedelseder
Mr. and Mrs. Tom L. Lorenz
Mr. and Mrs. Albert Mangelsdorf
Mr. and Mrs. Joseph V. Martinek
Dr. and Mrs. John J. McCann
Mr. and Mrs. G. H. McFarland
Mr. and Mrs. A. R. McKinlay
Mr. John T. Miller
Mr. and Mrs. Jules L. Monti
E. R. Moore Company
Miss Charlotte Morehead
Miss Victoria Mortland
Mr. and Mrs. Bernard Murphy
Mr. and Mrs. J. J. O'Neill
Miss Gertrude O'Rourke
Mr. and Mrs. Herman Ottens
Mr. and Mrs. H. E. Pauley
Mr. and Mrs. A. Rakers
Mr. and Mrs. J. A. Reid
Mr. and Mrs. A. J. Reisch
Mr. and Mrs. F. E. Riehemann
Dr. and Mrs. Frank Ritter
Mr. and Mrs. A. W. Rothermick
Mrs. Bernard Rubeli
Mrs. F. G. Rummelhart
Miss Ruth Savage
Marie Jo Schuessler
Mr. and Mrs. Val W. Schuessler
Miss Theresa Shea
Mr. and Mrs. P. J. Sheridan
Sisters of Loretto, Webster College
Sisters of Loretto, Colorado Springs
Sisters of Loretto, Loretto Heights College
Sisters of Loretto, El Paso, Texas
Sisters of Loretto, Denver
Mrs. George F. Smith
Mr. George L. Smith
Mr. and Mrs. R. L. Spalding
Mr. and Mrs. T. A. Sproul
Miss Rheta Stinson
Mr. Frank C. Thompson
Mr. and Mrs. J. T. Thurmond
Miss Winifred Toner
Mr. and Mrs. Frank Verkamp
Mr. and Mrs. A. B. Vierheller
Mrs. N. Ward
Webb Photo Service
Webster College Book Store
Webster College CoOp Store
Webster College Choral Club
Webster College Vodvil

RUBICAM SCHOOL

offers

Thorough preparation for
Secretarial, Stenographic
and Accounting Positions

PLACEMENT SERVICE
WITHOUT CHARGE TO
RUBICAM GRADUATES

SUMMER CLASSES IN SHORT- HAND AND TYPEWRITING

Day and Evening Classes
Individual and Group Instruction

Three Conveniently Located Schools

4933 DELMAR BLVD.	FOrest 3900
3469 S. GRAND BLVD.	LAclede 0440
7701 FORSYTHE BLVD.	CAbany 4102

ROBBINS JEWELRY CO.

ARCADE BUILDING
3rd Floor
ST. LOUIS, MO.

THE LORELEI
4525 OLIVE STREET

Swimming, May to September
Roller Skate, September to May

88 YEARS DESIGNING
TRULY CATHOLIC MONUMENTS

McCARTHY MONUMENT CO.

4642 West Florissant Ave.
St. Louis, Mo.

COMPLIMENTS OF

LAMMERT'S DEPARTMENT STORE

110 West Lockwood Webster Groves, Mo.

PHELAN COAL AND COKE

SHELL COKE IN BAGS
ZEIGLER AND IGNITO COAL
Wood Any Length and Kindling
Quality Always Pleases
KIRKWOOD ROAD AND FRISCO TRACKS

JOS. WARD PAINTING CO.

PAINTING CONTRACTORS
3110 EASTON AVENUE

JEfferson 0633

VESS
BEVERAGES

HOULIHAN NURSERY COMPANY

*Shade and Fruit Trees
Ornamental Shrubs*



Office and Nursery

**Mosley Road between Ladue and
Olive St. Roads**

Phone, TErryhill 4-2511

CREVE COEUR, MISSOURI

DAD KNOWS BEST . . .

Van Horn's fried chicken is different. So are his hot biscuits and strawberry preserves. Come out and enjoy yourself on Saturday night.

Van Horn's Farm
**9401 LITZINGER ROAD
BRENTWOOD**

(Scene of the Annual Fathers-Daughters Banquet)

TAKE GORGEOUS

FULL COLOR "STILLS"

WITH MINIATURE CAMERAS

Let Erker's show you this fascinating new phase of picture making.

610 OLIVE

Erker's

518 N. GRAND

Guild Opticians



Compliments of



JOE GARAVELLI



5701 DeGiverville

Phone, WEbster 4177

**SUBURBAN
FURNITURE CO.**

Gieseeking Brothers, Props.



**36 West Lockwood Avenue
Webster Groves, Missouri**

COMPLIMENTS OF

**OLD ORCHARD
DRUG STORE**



WE DELIVER

JAKE MAURER
6008 KINGSBURY



FINE MEATS

Fancy Fruits and Vegetables

CAbany 4050

CAbany 4711

... FOR ...

ICE • COAL • FUEL OIL

Call Jefferson 1000

THE CITY ICE & FUEL CO.

3638 OLIVE

RAY'S PHOTO SHOP

*PHOTOGRAPHIC
Work of Quality*

ARTIST SUPPLIES

300 Feet East of the Ozark Theatre

118 E. LOCKWOOD WEBster 2591

Compliments of

**KONCEN
MEAT COMPANY**

6210 Easton Avenue

EMIL FREI, INC.

3934 South Grand Boulevard
ST. LOUIS, MO.

Training for Business Positions

SECRETARIAL
STENOGRAPHIC
ACCOUNTING

Day and Evening Classes

THREE CONVENIENT LOCATIONS

BROWN'S SCHOOL

Paul Brown Bldg., 818 Olive
5858 Delmar 3522 Hebert
CENTral 2293

THURMOND'S SHOE STORE

Quality Shoes and Hosiery

105 W. LOCKWOOD Webster Groves, Mo.

SEE OUR REMODELED SHOP

WHEN IN NEED OF

Venetian Blinds
Window Shades
Draperies Hardware

GREEN LEA

Ice Cream Shoppe

FAMOUS FOR MALTS

INDIVIDUAL MOLDS AND ICE CREAM CAKES
A SPECIALTY

SURE-GRIP SHADE CO.

3881 BELL Jefferson 9716

30 W. LOCKWOOD WEBster 3018

WEBSTER GROVES TRUST COMPANY

Compliments of

S. W. STEIN MEAT CO.
314 S. Twenty-first St.

GArfield 4155

OLD VIENNA PRODUCTS

Distributors of

**Oke Doke Popcorn
and POTATO CHIPS**

4339 DUNCAN — FRanklin 1700

NUT MEATS

POPCORN

**The
PARKMOOR**

ALL CREAM
ICE CREAM

•
DELICIOUS
SANDWICHES

A FRIEND

FOR FINEST WORK CALL AT . . .

ARCADE SHOE REPAIR SHOP

Shoes Rebuilt, Not Cobbled

126 W. LOCKWOOD

**BONNY BEAUTY
SALON**

•
732 E. BIG BEND
•

ALICIA CROGHAN

WEbster 1585

Miss Hickey's
•• training school for secretaries
Day and Evening Sessions 560 No. SKINKER BLVD. ST. LOUIS
CAbany 6878

Compliments of
DORR & ZELLER
Catering Co.

DeBaliviere and Waterman

Compliments of
ANCHOR POST
FENCE CO.

Herbert Golterman

LOUDERMAN BUILDING

Day and Evening Classes
Individual and Group Instruction
Positions Secured for Graduates

Literature Mailea Upon Request

Call PRespect 4422

ST. LOUIS BUSINESS COLLEGE
GRAVOIS AND JEFFERSON

P. O. HOWE
Hardware Co.

646 E. BIG BEND

WEbster 652

Colonial Venetian Blinds
Ornamental Rods . . . Shades

Ray H. Sutter Shade Shop
6042 DELMAR BLVD. CAbany 1513

COMPLIMENTS OF
OLD ORCHARD
SHEET METAL WORKS

CHestnut 6106

CHestnut 6107

LENHARDT-McMANUS
PRODUCE CO.
WHOLESALE FRUIT AND
PRODUCE

909-911 N. Fourth Street

Wm. D. McManus

Frank W. Lenhardt

Look for
GREYHOUND



ON THE
BUS YOU RIDE

ON THE
TICKET YOU BUY

It costs no more to buy the best in highway travel — world-famous Greyhound service and reliability, plus the incomparable Greyhound Super-Coach. So whenever you travel, insist upon the name GREYHOUND on the ticket you buy and on the bus you ride.

GREYHOUND TERMINAL
Broadway and Delmar CEntral 7800

2910 OLIVE



JEfferson 5500

Compliments

of

**ST. LOUIS
BELL FOUNDRY**

2735 LYON

COMPLIMENTS OF

WILLIAM J. CUSICK

Agent, N. Y. Life Insurance Co.

GA. 3870

12th Floor Paul Brown Building

Compliments

of

A FRIEND

PACKARD

BERRY MOTOR CAR COMPANY

2201 Locust Street

"Ask the Man Who Owns One"

COVERS and BINDING

for the

1940 LAURETANUM

by

BECKTOLD COMPANY

SAINT LOUIS, MISSOURI

THIS 1940 LAURETANUM

Printed by

NIES-KAISER PRINTING COMPANY

2206-08 Pine Street

SAINT LOUIS

CEntral 7789-7790

Promotional Ideas — Catalogs — Literature

S I N C E 1 9 0 1

Another
BOOK

by

CENTRAL

CENTRAL ENGRAVING CO.

114 North Seventh Street • Saint Louis, Missouri

A FINE SELECTION OF
DOMESTIC AND IMPORTED LINENS

•
The Perfect Wedding Gift...
For your own Hope Chest...

•
MARGARET GROH
FOrest 7188 *Monogrammed Linens*
4724 McPHERSON AVE.

Compliments of

**A. H. Dudenhoeffer
Candy Co.**

3715 GRAVOIS

LAclede 1825