

1952

Lauretanium

*Lauretanum*

*1952*

*Webster College*



## *Theme*

Four years ago girls enrolled at Webster with the purpose of fulfilling the necessary requirements for a Catholic college education. During these years we have seen the absorption of knowledge, the attainment of womanhood, and the formation of a deep desire for personal sanctity.

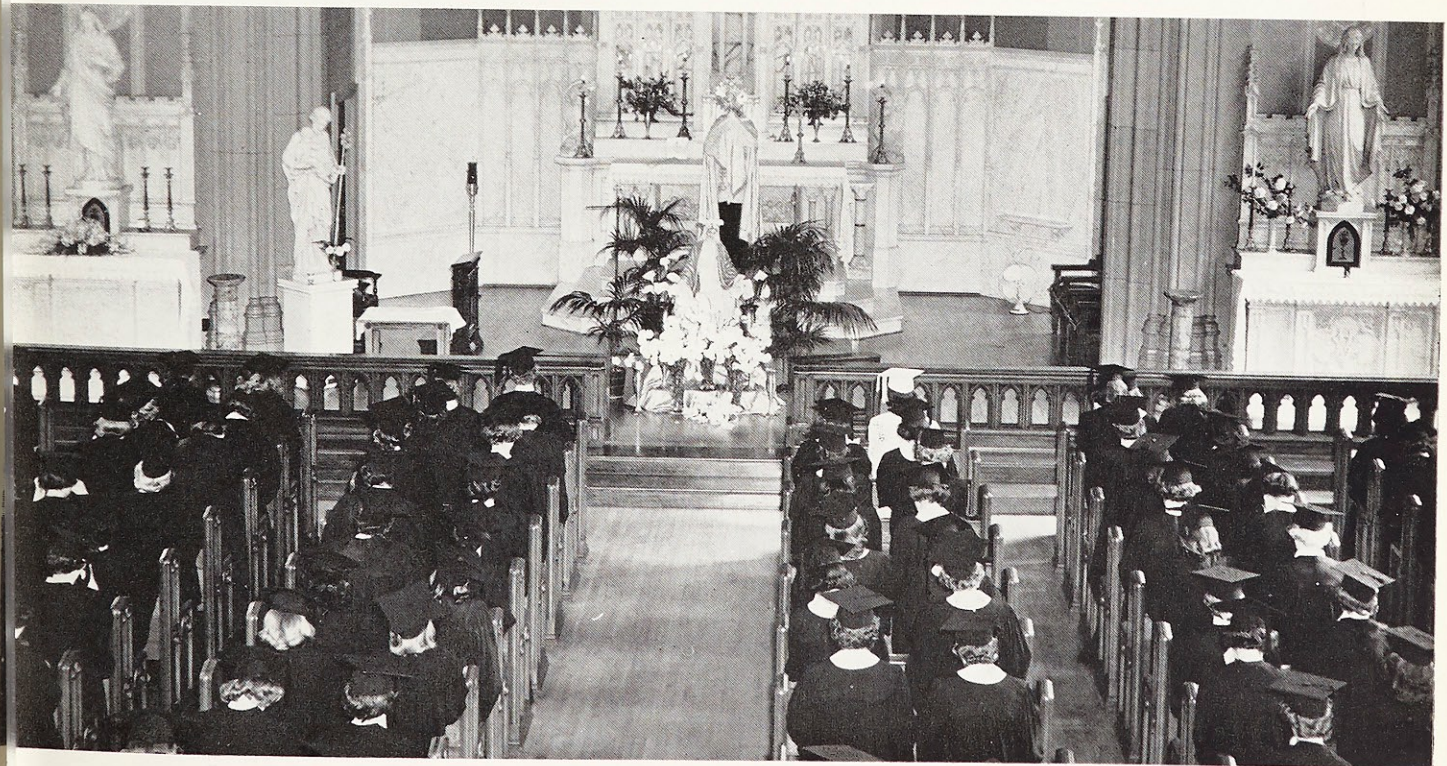
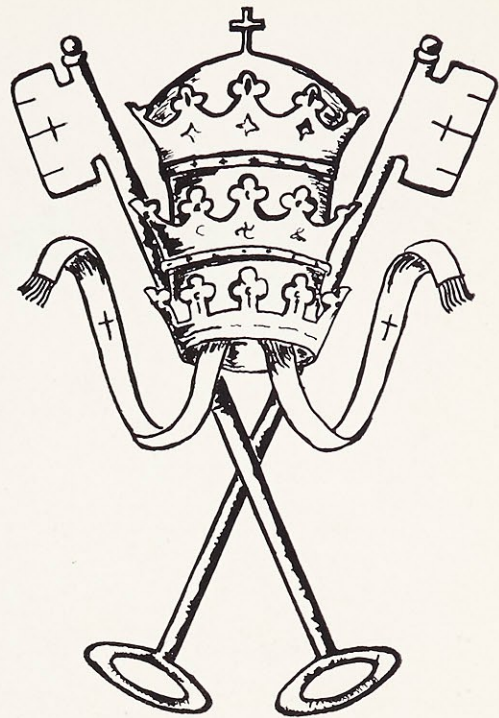
With these aspects in mind, we present our theme in which the spiritual, intellectual, physical, and social benefits of a Christian education are established:

*"And Jesus advanced in wisdom and age and grace with God and men." Luke III, 52.)*

THE STAFF.

# Dedication

To Pius X, a recently beatified Pope, for his untiring efforts to promote the early reception of the Sacrament of the Holy Eucharist and his furthering of the active participation in the Mass through the use of the missal—"Pray the Mass"—we humbly dedicate the Lauretanium for nineteen hundred and fifty-two.



# *Contents*

*Classes*

*Organizations*

*Social Activities*



# Faculty

- Sister Mariella, A. M.  
*President*
- Sister Rose Maureen, A. M.  
*Dean of Studies*
- Sister M. Francis Jane, A. M.  
*Dean of Women*
- Sister Alexander Marie, A. M.  
*Registrar*
- Catherine Barnicle, M. S. S. W.  
*Assistant Dean of Women*
- Reverend John Bagen, Ph. D.  
*Chaplain*
- Reverend Justin Brauner, A. M.
- Reverend Clarence Corcoran, C. M., A. B.
- Reverend Francis L. Eberle, A. B.
- Reverend Gerard Glynn, A. M.
- Reverend John Kennedy, A. B.
- Reverend Sylvester Schiene, A. B.
- Reverend Robert J. Schwegel, A. B.
- Sister M. Adaline, M. M.
- Sister M. Alonza, Ph. D.
- Sister M. Carmela, B. S.
- ✓ Sister Catherine Patrice, M. M.
- Sister M. Cecily, A. M.
- Sister M. Clotaire, B. S. in L. S.
- Sister M. Edmond, Ph. D.
- Sister Edwin Mary, A. M.
- Sister Esther Marie, A. M.
- Sister M. Felicia, Ph. D.
- Sister M. Francis de Sales, Ph. D.
- Sister M. Fredric, A. M.
- Sister M. Germaine, M. S.
- Sister M. Gregory, A. M.
- Sister M. Harriet, M. S.
- Sister Helen Clare, M. S.
- Sister Helen Jean, A. M.
- Sister Helen Therese, A. M.
- Sister M. Joecile, M. M.
- Sister Mary Bede, M. M.
- Sister M. Paula, B. M.
- Sister M. Philothea, A. M.
- Sister M. Roberta, Ph. D.
- Sister Rose Vincent, B. S. in Music
- Sister Thomas Mary, A. B.
- Marguerite Ahrens, B. S.
- Esther McD. Brown, A. M.
- Canascia Duncan Burke, A. M.
- Doris Ann Diephouse, A. B.
- John G. Dollar, A. M.
- Muriel Dollar, A. M.
- Eloise Barclay DuBois, A. M.
- Clarence L. Hohl, Jr., Ph. D.
- Lisbeth E. Hoops
- Anne H. Jennings, A. M.
- Carl J. Madlinger
- Helen Manion, B. S.
- Michael F. Manley, Ph. D.
- Harry R. McClain, LL.B.
- Mary E. Moeslein, A. M.
- Clare Marie O'Keefe, M. S.
- Gratia Pampari
- Katherine Judith Panchot, R. N.
- Helen Pech, M. M.
- V. Lorraine Schneider, M. S.
- Rudolph E. Torrini, A. M.
- Consuelo Uribe Wise, A. M.

# Classes

... "And He advanced in Wisdom . . ."

The main idea expressed in this drawing is Wisdom, the greatest of the gifts of the Holy Ghost, and the first point of our theme.

Webster students, symbolized by the figure of a girl, are advancing in wisdom through their classes, activities, and social life. The seniors have reached their peak of wisdom here at Webster and must now continue their advancement under new surroundings.

The Holy Ghost, represented by the dove, is commonly acknowledged as the source of wisdom. The temple, reinforced by the "seven-fold pillars", is symbolical of all Christians in so far as they are temples of the Holy Ghost. The seven tongues of fire incorporated in the drawing refer to the Seven Gifts of the Holy Ghost through which at Baptism, is received the first taste of Wisdom.



# Seniors



ODALIE MARIE WITTGES  
 Colorado Springs, Colorado  
*A. B. in Art*  
 Student Government President

JOAN HOOGSTRAET  
 St. Louis, Missouri  
*A. B. in Drama*  
 Senior Class President



LOIS AUBUCHON  
 Elmhurst, Illinois  
*A. B. in Sociology*  
 Sodality Prefect

PRISCILLA MARIE MCCANN  
 Lowell, Massachusetts  
*A. B. in Spanish*  
 Hall President

P. M.

DOLLY

HOOGY

AUBY



# Seniors

RITA LEE KREBS  
 Normandy, Missouri  
*A. B. in Drama*  
 Senior Class Representative



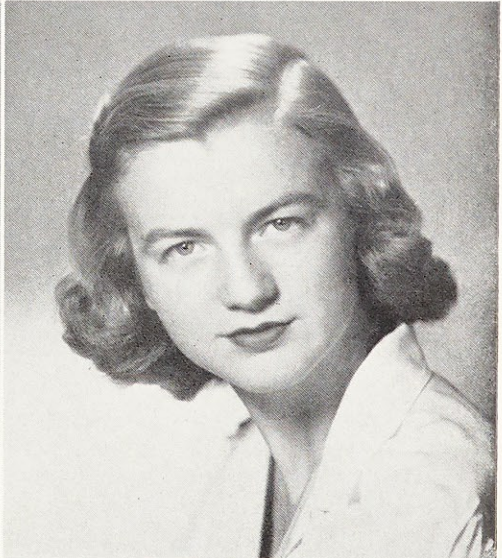
MARY ELIZABETH TINKER  
 Richmond Heights, Missouri  
*A. B. in English*  
 Senior Class Vice-President



PATRICIA WALSH  
 St. Louis, Missouri  
*A. B. in Home Economics*  
 Senior Class Secretary



JOAN WELSH  
 Mattoon, Illinois  
*A. B. in English*  
 Senior Class Treasurer



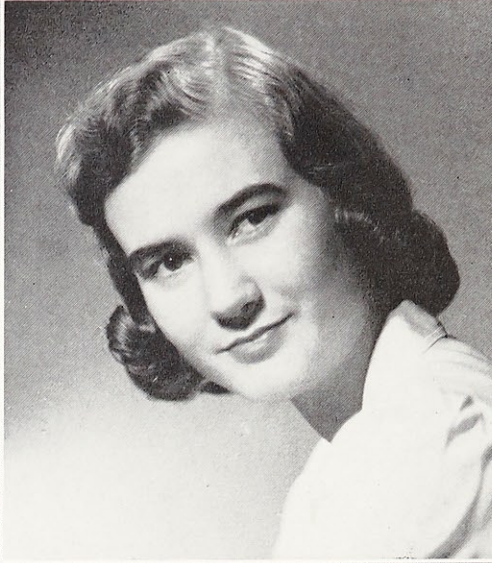
JUDY

REET

JOAN

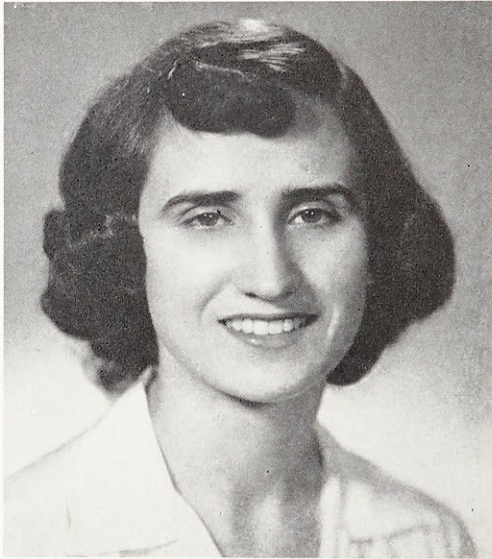
PAT

# Seniors



MARY ADELAIDE ABBOTT  
St. Louis, Missouri  
*A. B. in Sociology*

MARTHA KATHRYN ABBOTT  
St. Louis, Missouri  
*A. B. in Elementary Education*



MARY ELIZABETH AINSWORTH  
St. Louis, Missouri  
*A. B. in Music*

JOYCE ELAINE BABER  
St. Louis, Missouri  
*A. B. in English*

BETTYE

MARTY

JEB

MARY



CATHERINE  
Richmond  
*A. B. in En*

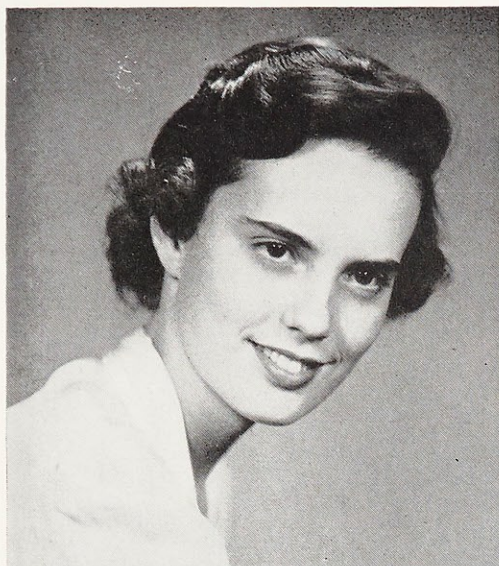
BETTE GLA  
St. Louis  
*B. S. in Di*

MARTHA M  
Mineral V  
*A. B. in Eng*

LESLYNNE  
St. Louis  
*A. B. in Dr*

# Seniors

CATHERINE V. BAINE  
 Richmond Heights, Missouri  
*A. B. in English*



BETTE GLADYS BANKS  
 St. Louis, Missouri  
*B. S. in Dietetics*



MARTHA MARIE BELCHER  
 Mineral Wells, Texas  
*A. B. in English*



LESLYNNE ANN BENSON  
 St. Louis, Missouri  
*A. B. in Dramatics*



TEXAS

CATHY

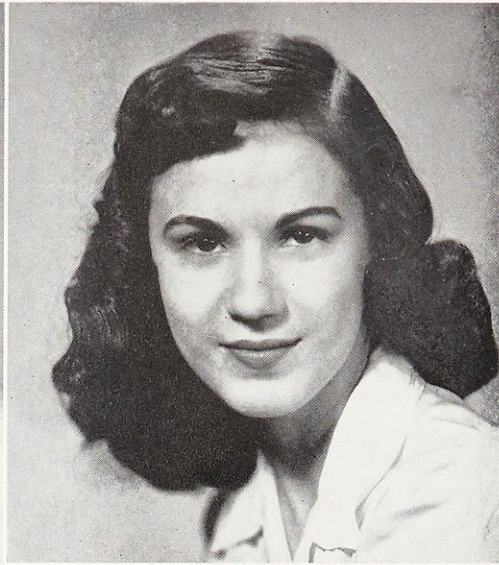
BETTE

LES

# Seniors



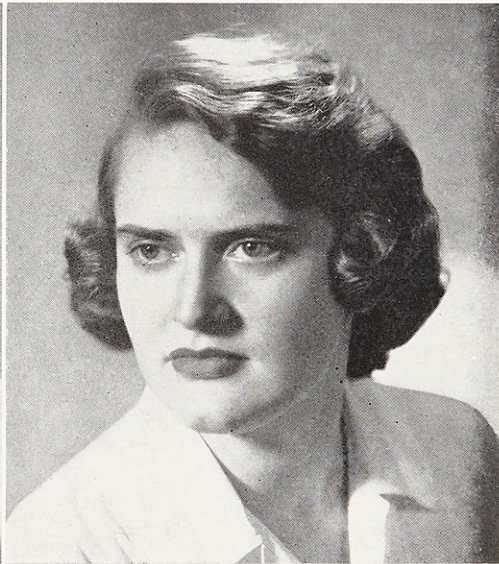
GLADYS ANN BLANDFORD  
Loretto, Kentucky  
*A. B. in Home Economics*



MARIA ISABEL BOU  
Caguas, Puerto Rico  
*A. B. in Sociology*



CELIA BRAECKEL  
Joplin, Missouri  
*A. B. in English*



JOAN MARIE BULTE  
St. Louis, Missouri  
*A. B. in English*

BABEL

CELIA

JODY

ANN



# Seniors

ELIZABETH JEANNE COMPTON  
Webster Groves, Missouri  
*A. B. in Drama*



JACQUELINE CRAWFORD  
Webster Groves, Missouri  
*A. B. in English*  
(January graduate)



MARY LOU CROSS  
Carmi, Illinois  
*A. B. in Music*  
Faculty Representative



JEANNEMARIE DEVEREUX  
St. Louis, Missouri  
*A. B. in Music*



JACKIE (missing)

BETTY

LUE

JEANNIE

# Seniors



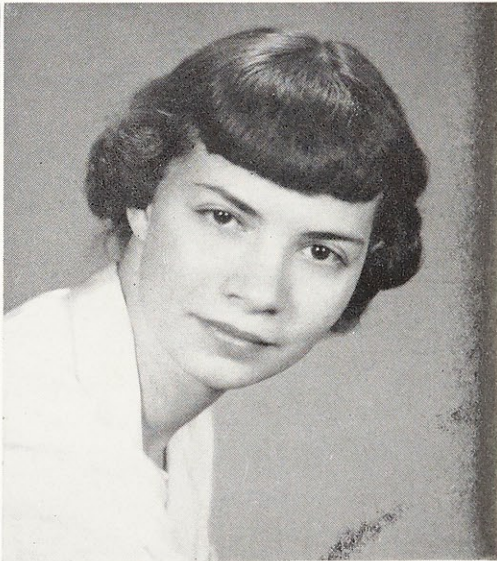
MARY ELLEN DOWNEY  
 Kansas City, Missouri  
*A. B. in History*



JOAN MARIE DUBUQUE  
 Kirkwood, Missouri  
*A. B. in Elementary Education*



MADGE F. DYER  
 Clayton, Missouri  
*A. B. in Elementary Education*



MARY JOAN FEDERER  
 St. Louis, Missouri  
*A. B. in English*

MARY ELLEN

JOHNNIE

JOAN

MADGE (missing)



# Seniors

VIRGINIA FEENEY  
 Kansas City, Missouri  
*A. B. in History*



BEVERLY JEAN FIORELLA  
 Owensboro, Kentucky  
*B. S. in Biology*



DOROTHY FISHER  
 Louisville, Kentucky  
*A. B. in English*



EILEEN MARGARET FRANKE  
 Webster Groves, Missouri  
*A. B. in Spanish*



DOTTIE

EILEEN

GINNY

BEV

# Seniors



ROSEMARY ELLEN FUESTING  
Mattoon, Illinois  
*A. B. in Home Economics*



MARY JANET GARBACZ  
Little Rock, Arkansas  
*A. B. in English*



CAROL ELEANOR GEBHART  
St. Louis, Missouri  
*A. B. in Spanish*



MARY JEAN GERKE  
Edwardsville, Illinois  
*A. B. in Art*

CAROL

GERKE

JAN

SISTER MARY CHRISTINA  
CHENG, S. L.  
Shanghai, China  
*A. B. in Art*

ROSIE



RITA ANG  
Louisville  
*A. B. in H*

JOAN FAY  
Valley P  
*A. B. in A*

MARY PAT  
Macomb  
*A. B. in So*

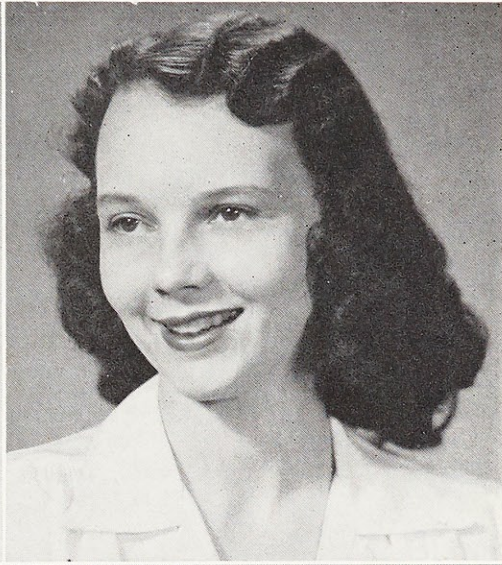
MARY LEE  
Washing  
*A. B. in M*

# Seniors

RITA ANGELA GUTHRIE  
Louisville, Kentucky  
*A. B. in Home Economics*



JOAN FAY HARRINGTON  
Valley Park, Missouri  
*A. B. in Art*



MARY PATRICIA HIGGINS  
Macomb, Illinois  
*A. B. in Sociology*



MARY LEE HOLZEM  
Washington, Missouri  
*A. B. in Music Education*



JOAN

BOTTOM

MARY LEE

RITA

SISTER MARY CORONITA  
DACANAY, S. L.  
Shanghai, China  
*A. B. in Music*

# Seniors



PATRICIA KINSELLA  
 Memphis, Tennessee  
*B. S. in Chemistry*

MARGARET JEAN KOLASCH  
 St. Louis, Missouri  
*A. B. in English*



MARIANNE KOSAKOWSKI  
 St. Louis, Missouri  
*A. B. in Music*

ROSE MARIE KRIBS  
 Kankakee, Illinois  
*A. B. in English*

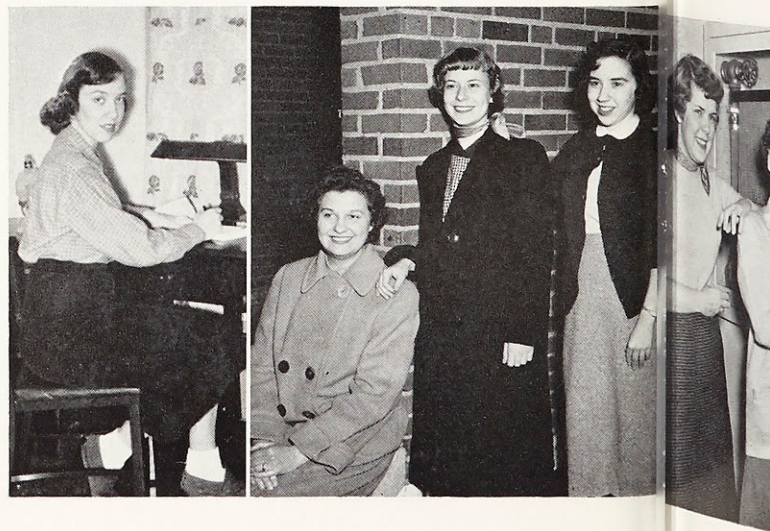
PAT

MARIANNE

PEGGS

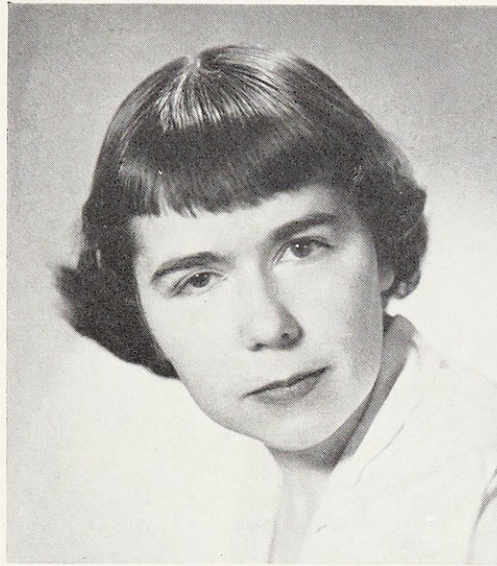
SISTER PETER MICHAEL  
 DUNPHY, S. L.  
 Broomfield, Colorado  
*A. B. in English*  
 (July graduate)

REE



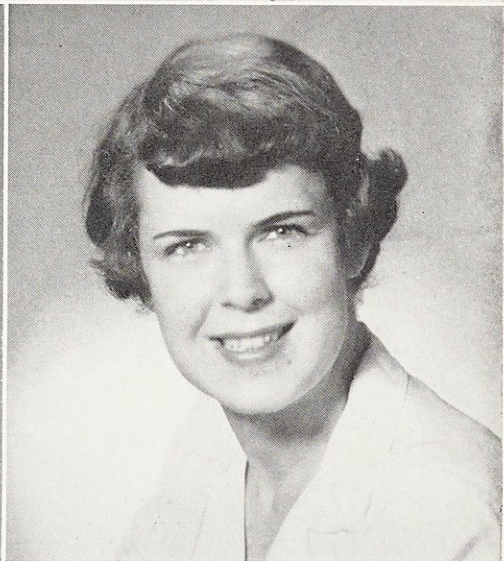
# Seniors

MARY LOU MCFADDEN  
Decatur, Illinois  
*A. M. in English*



PATRICIA M. MCQUIE  
Louisville, Kentucky  
*A. B. in Sociology*

BARBARA MARIE MEIER  
Sedalia, Missouri  
*B. S. in Biology*



LOIS PATRICIA MEYER  
Clayton, Missouri  
*A. B. in English*



McQ.

MARY LOU

BARB

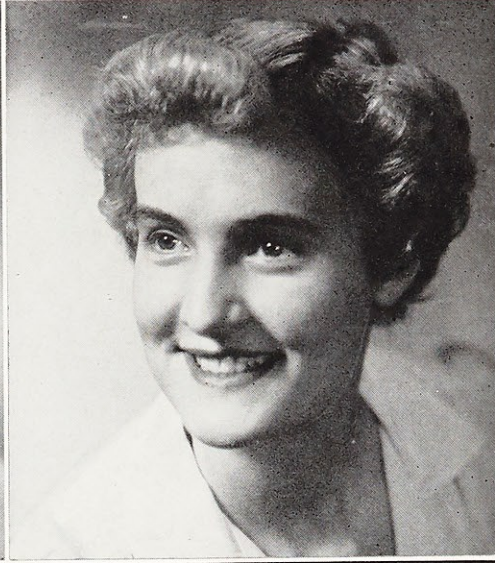
PAT

(July graduate)  
SISTER M. TERESINA  
FULGHUM, R. S. M.  
St. Louis, Missouri  
*A. B. in Music*

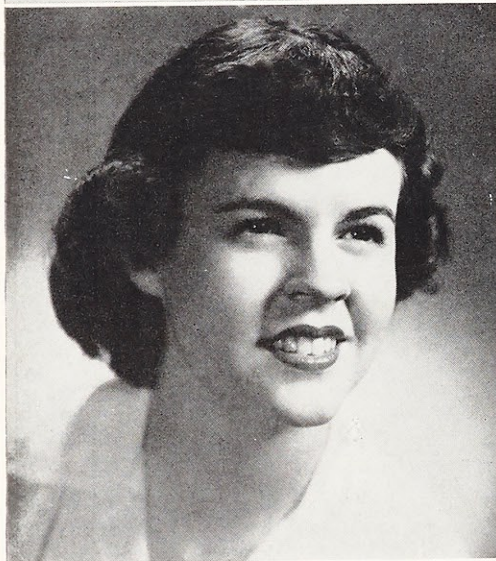
# Seniors



KATHLEEN ROSE MURPHY  
University City, Missouri  
*A. B. in History*



ELIZABETH ANNE  
RATERMANN  
St. Louis, Missouri  
*A. B. in Sociology*



MARRILYN ROSE REED  
Normandy, Missouri  
*A. B. in English*



MIRIAM C. REEDY  
Oak Park, Illinois  
*A. B. in Drama*

KATHLEEN

MIR-MIR

BETTY

SISTER M. WILLIAM HOLLEN-  
BACH, S. S. N. D.  
St. Louis, Missouri  
*B. S. in Chemistry*

MARRILYN



# Seniors

MARY SARACINI  
 Poplar Bluff, Missouri  
*A. B. in Elementary Education*



JOAN SCHULER  
 St. Louis, Missouri  
*A. B. in Spanish*



MARTHA SHRIWISE  
 Jetmore, Kansas  
*A. B. in Home Economics*  
 (January graduate)



MARIAN THERESA SLY  
 East St. Louis, Illinois  
*A. B. in Home Economics*



JOAN

MARTHA

MARY SARA

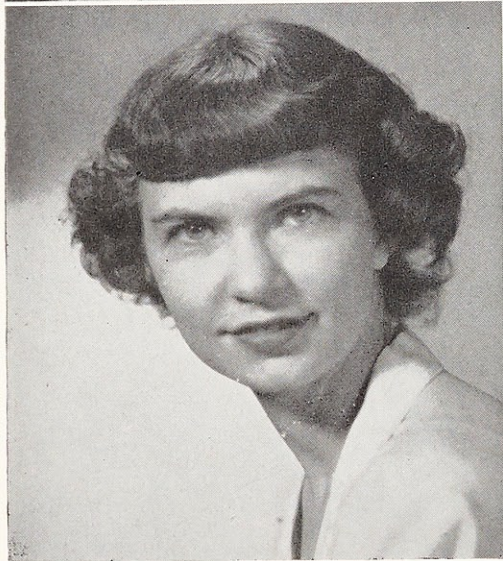
MARIAN

SISTER MARY FRANCENE  
 LUM, S. L.  
 Shanghai, China  
*A. B. in Mathematics*

# Seniors



ELAINE MARGUERITE TEMME  
Kirkwood, Missouri  
*A. B. in Elementary Education*



JOYCE THEIVAGT  
Beardstown, Illinois  
*A. B. in Music*

MARILYN TOENISKOETTER  
St. Louis, Missouri  
*A. B. in Music*

DOLORES MARIE WHITE  
Centralia, Illinois  
*A. B. in History*

ELAINE

MARE

DOLORES

JOYCE (missing)



# Seniors

DOROTHY CLAIRE WILLARD  
Knoxville, Tennessee  
*A. B. in Elementary Education*



MARY JEAN WOOD  
Kirkwood, Missouri  
*A. B. in English*



MILDRED COSBY ZILLIKEN  
Webster Groves, Missouri  
*A. B. in Art*



WOODIE

FLASH

MILLIE (missing)

SISTER JOHN PATRICE  
TAHENY, S. L.  
Denver, Colorado  
*A. B. in Music*

# Juniors

Back Row: R. M. Henry, J. Halbruegger, B. Bader, R. Johmann.

Front Row: T. Gonzalez, C. Hughes, K. Sweetin, M. Heckwolf.

Back Row: S. Woestman (Secretary), M. Nischan, P. Price, M. Cleary (President).

Front Row: K. Clark (Vice-President), M. Gimenez, A. Ugaya (Junior Representative), M. Hegarty.



Left to right: J. Misita, P. Kirchner, M. Rosenthal, A. Rodman, S. Barnicle (Junior Faculty Representative), P. Fiorella, A. Hewitt.

Back Row: M. A. Bedel, C. Shipley, J. McCormack (Junior Representative), P. Beetz.  
Front Row: J. Ludwig, J. Herman, V. May.

# Juniors

Left to Right: V. Sartorius, M. Edgington, M. L. Brand, M. A. Westerman, L. Barbazon, J. Mattingly (missing).

Back Row: M. Gerber, R. M. O'Klock, M. C. Burke, E. Byrne.

Front Row: J. Mazurek, M. Cummings, F. Sailor, C. Dolson.



Back Row: C. Waye, R. Novak, M. Schrader, M. A. Spalding.

Front Row: J. Wilbret, P. LaPee, Alice Ehernberger (missing).

Back Row: M. Cook, J. Tarman, Ann Ehernberger, M. Biller, D. Winkler.

Front Row: P. Miles, N. Manne, M. McDonald, R. Sacchi, P. Klaric, R. Huang (missing).

# Sophomores



Back Row: M. L. Grone, H. O'Brien, J. Seabold, M. d'Alquen.

Front Row: G. Tulley, B. Rechten, B. Venn, M. L. Brewington, P. Demick, C. Poirier (missing).

Back Row: H. Medley, C. A. Pulskamp, M. Mathews, A. Ruggeri, M. Lyons, J. Meyer, M. J. Schulte, H. Wehlermann, R. Kono.

Front Row: R. Casey, T. Roberts, H. Lesage (missing), A. Sullivan (missing).

Back Row: P. Ryan, V. Ritayik, G. Luecking, M. Berry, J. Newsham.

Front Row: H. Venker, D. Saner (Treasurer), J. Furrer (Secretary), P. Woestman, M. Wall, D. Smith, P. Stuckel, C. Schneider.

Back Row: J. Thompson, E. Otey, M. Herrmann, M. Welshans, J. O'Toole, C. Meyer.

Front Row: J. Grana, J. Lyons, B. Butler, R. Glennon, J. Mulroy, F. Martin (missing).

Back Row: M. J. McNamara (Sophomore Representative), A. Finsel, H. McAvoy, M. Winter.

Front Row: A. Abbick, D. Mutz, S. Nutter, D. Adams.

Left to Right: L. Walsh, R. Viviano, A. Wiegand, M. A. Mahler, M. B. Lackey, R. Powers, M. Ahrens (missing).

Back Row: R. Higdon, E. Ashe, K. Bryan, J. Tamborn, L. Spalding, C. Hayden.

Front Row: A. Schutt, J. Porter, C. Callaway (missing).

Back Row: M. McCormack (President), S. Winterer, M. C. Leacy, B. Halbruegger, B. Muscat, M. Ward.

Front Row: R. Craft (Vice-President), M. Clements, L. A. Bowers, T. Heumann.



## *Sophomores*

# Freshmen

Left to Right: M. Mueller, C. Newsham, A Neagle, E. Offner, M. Young, A. Quinn (Vice-President), E. Lebert, M. Riley, P. Neisewander.



Left to Right: S. Yopp, K. Wilcox, P. Voshart, M. A. Westhoff, D. Waye, M. Way.

Missing: A. Banc, S. Casta, M. Langan, B. Lee, B. Miniatas, C. Nicolson, K. Richter.



Fourth Row: B. Foster, P. Fagan, B. Daniels.  
 Third Row: C. Dorlac, P. Dowd, M. Devereux, R. Cruz.  
 Second Row: J. Durphy, P. Devereux, B. Edwards.  
 First Row: M. Esswein, D. McGarvey.



Standing: B. Lauerman, J. Penzler, H. Majcen, J. Rossie, J. Panchot, N. Watson, M. A. Worrell, M. E. Rich.  
 Sitting: N. Wilson, R. Riley (Freshman Representative), A. Rush (Treasurer), P. Landwehr.

# Freshmen

Back Row: G. Clement, M. Bowman, J. Byrne, K. Beetz, R. Eltz, J. Catanzaro, M. Casey.

Front Row: J. Coppolino, D. Daniel, C. Caplis, M. Corley, P. Baine, A. Casey.

Left to Right: R. Spalding, J. Thompson, O. Vittitow, C. Vander Perel, H. Wall, P. Sullivan, J. Temme, M. E. Shelton, M. C. Wilkinson, R. Troupe (Secretary), J. Schutte, P. Walsh.



Back Row: F. Lopez, S. Knoph, C. Jackson, D. Knyrim, J. McNamara, M. S. McKillin, E. Nischan.

Front Row: M. L. Morris, H. Mahoney, M. L. Hardesty.

Left to Right: N. Dwyer, M. Healy (President), E. Henneberger, M. Higdon, M. Morrill, E. Hoffman, H. Lyon, N. Ehernberger, J. Godat.

Missing: B. Schuepfer, B. Sokora, J. Wells.

# *Activities*

There is a literal perception and a symbolical conception of this picture. Literally it will be observed that the elements which compose this picture are a hand, a triangle, rays, the figure of a girl, and a stairway. Symbolically the hand represents God, the triangle—the Holy Trinity, the rays—grace proceeding from God, the figure—the Webster girl, the stairway—age. The irregular elevation of steps is symbolic of virtues which may be attained only by reception of the grace of God. This picture represents the last part of our theme, *age and grace*.



# Sodality of Our Lady



Lois AuBuchon, Sodality Prefect.

Requiem High Mass offered for Claudia LaMarre.

## SODALITY BOARD

Standing: P. McCann, M. Abbott, M. Hegarty, D. Wittges, M. Nischan, C. Baine, R. Casey, R. Glennon.  
 Sitting: E. Halbruegger, L. AuBuchon, V. Sartorius, M. A. Spalding, D. Willard.

Our Lady's Sodality at Webster—to the members, this phrase signifies their entire spiritual life. This way of life which is the Sodality operates through the units and committees. The general meetings bring to the whole body the ideas and benefits gained by the units. In accord-

ance with the wishes of the archbishop regarding the quality rather than the quantity of Sodalists, the long Probation for the Freshmen was planned this year. In their own unit meetings they learned how to carry out the Sodality's threefold purpose: sanctification of self, sancti-

fication of neighbor, and defense of the Church.

Our Lady's Committee had for its function the fostering of devotion to the Patroness of the Sodality. This was accomplished this year partly through a continuous daily rosary.

Under the sponsorship of the Eucharistic

#### OUR LADY'S COMMITTEE

K. Clark, R. Craft, M. Saracini, P. LaPee, D. Saner, D. Willard (chairman), E. Temme (missing).



Committee the First Friday Guard of Honor adored the Blessed Sacrament during exposition from the time of the all-Sodality Mass until Benediction in the afternoon.

The very active Mission group brought joy to many through the collecting of food for

#### MISSION COMMITTEE

E. Franke, M. Mathews, M. A. Westerman, M. Hegarty (chairman).



#### LITERATURE COMMITTEE

M. Cummings, C. Baine (chairman), B. Bader, J. Tinker, M. Reed, M. Zilliken (missing), B. Venn (missing).



#### EUCCHARISTIC COMMITTEE

Back Row: S. Winterer, M. Nischan (chairman), P. Beetz.  
Front Row: B. Fiorella, B. Meier, B. Barbazon, A. Fincel.



Rev. Francis J. Corley, S. J., and Rev. Clarence F. Whitford, S. J., Reread Masters.



Chairmen of the Freshmen Probation Units—Standing: M. Mathews, C. Schneider, M. Belcher, P. LaPee. Sitting: H. Medley, M. Winter, V. Sartorius (chairman), M. C. Burke, E. Byrne.

Thanksgiving Baskets, and by carrying out detailed plans for the annual Christmas Party for the children of St. Malachy's parish. Another project of this committee was the sponsoring of the Catholic Students Mission Crusade Study Club. This club brought to its members better knowledge of the fundamentals of their faith.

The encouragement of the use of religious



R. Spalding, M. Hegarty, F. Martin, at Christmas Party for children at St. Malachy's.

and liturgical Christmas cards by Catholics was due to the hard work of the Literature Committee. The year-long responsibility of this group was the charge of the pamphlet rack in the library.

The Publications Committee of the Sodality is divided into two groups. One group cares for the Sodality Bulletin Board which informs students of coming feast days and activities. The other section publishes the news of the Sodality in the bi-weekly Bulletin.

Under the direction of Pat Beetz, the Sodality plans for the year got a lively start in October with the Sodality Fall Festival at St. Louis University. Webster's reputation there for extra-hard Mission work was confirmed this year.

January found Sodalists and all Webster students in retreat. Between semesters seemed an appropriate time to take stock spiritually and make the necessary repairs. The Senior-

Junior retreat and the Sophomore-Freshman one made the best of beginnings for a new semester.

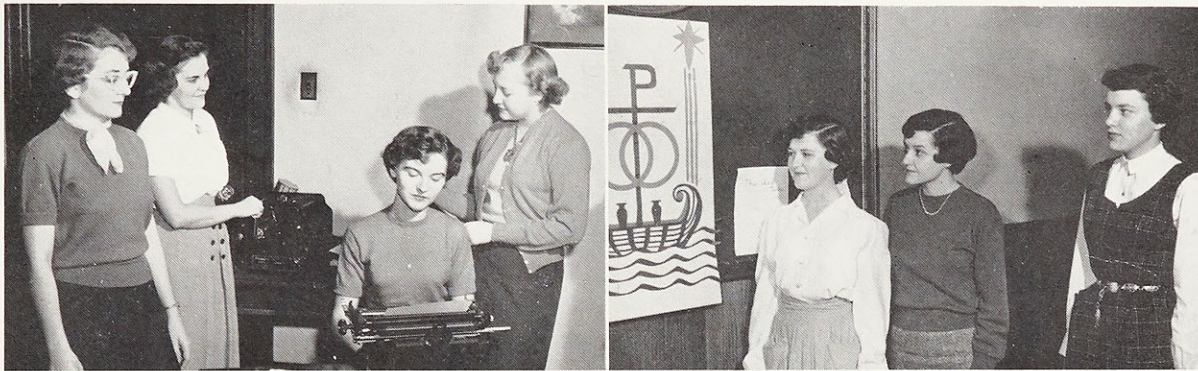
May, the month of Our Lady, brought her coronation as Queen of Heaven and earth by

the new prefect. The officers for the coming year were installed on this fitting occasion.

Thus it is, through the Sodality way of life, that Webster students advance in grace.

Sodality Bulletin Staff: A. Schutt, S. Adams, R. Casey, D. Mutz.

Sodality Bulletin Board Committee: F. Nutter, R. Glennon, B. Halbruegger.



Lighting the Advent Wreath: L. AuBuchon, R. Higdon, S. Woestman, P. Higgins.

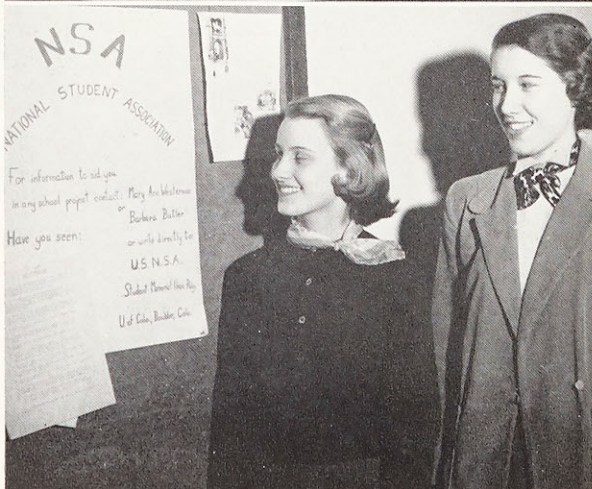
# Student Government



S. G. A. BOARD

Standing: R. Riley, M. Cleary, B. Banks, J. Hoogstraet, R. Krebs, M. J. McNamara, M. McCormack, L. AuBuchon, M. Healy.

Sitting: J. McCormack, M. L. Cross, D. Wittges, S. Barnicle, P. McCann, A. Ugaya (missing).



Dolly Wittges, S. G. A. President.  
N. S. A. representatives B. Butler and M. A. Westerman.

A privilege possessed at Webster is Student Government. The Association, composed of all the students, is governed by a Board of Representatives of each class. The students meet every Tuesday to discuss ideas which have been presented to the Board, and to be informed of coming activities.

The Coordinating Council, composed of the officers of all clubs and organizations on campus, helps to integrate all campus activity. The Council creates a spirit of cooperation for all.

The National Students' Association is an organization consisting of colleges and universities throughout the country. It endeavors

to create active interest on the part of the student in their governing body.

The National Federation of Catholic College Students includes Catholic colleges and universities throughout the United States. It attempts to encourage Catholic leaders through Christian social action. This is accomplished through organizations and commissions on campus. Webster leaders include: Pat McQuie, regional president; Betty Otey, Interracial Justice regional chairman; Emily Byrne, Webster Senior Delegate; Dot Saner, Webster Junior Delegate and co-chairman of Interracial Justice activities with Roberta Powers; and Judy Herman, Family Life chairman.

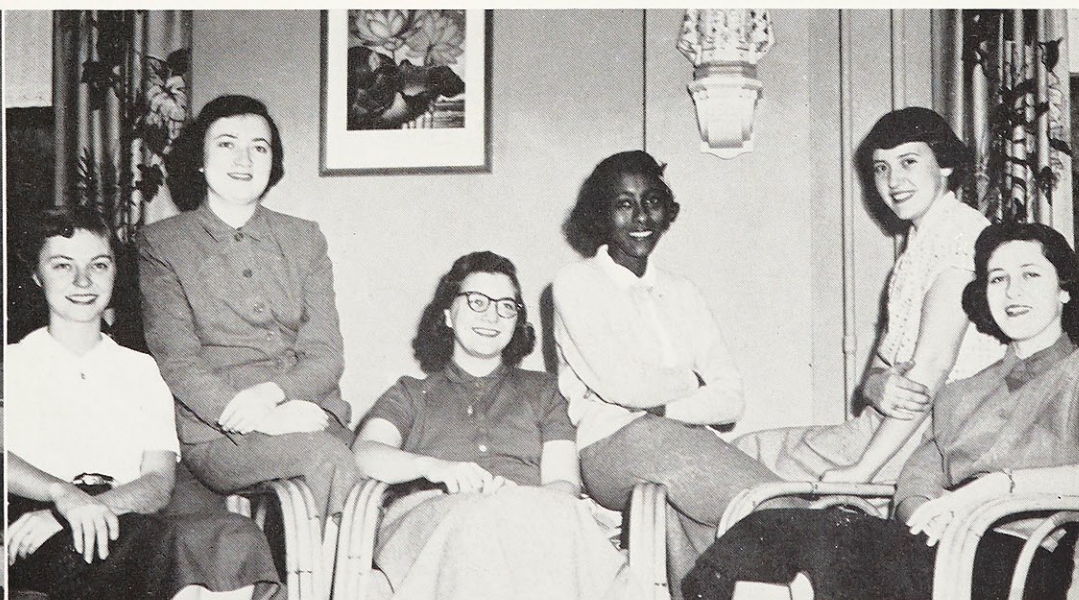
Active leaders in N. F. C. C. S. Back Row: H. Medley, M. J. Schulte, V. Ritayik, C. Schneider, R. Powers. Front Row: D. Saner, E. Byrne, S. Knoph.



Student representatives awaiting transportation to the Intercollegiate Convention at Loretto Heights College, Denver, Colorado.



M. Sly, speaking at Student Faculty Institute.



Representing Webster in "Who's Who Among College Students in the United States": D. Wittges, P. McCann, L. AuBuchon, B. Banks, M. Schrader, D. Willard.

# Kiddie Karnival



Clowns, balloons, popcorn balls, festive booths, and pony rides, all contributed to the success of the Kiddie Karnival. The student chairman for Webster's part in the annual Fall Festival was Julienne O'Toole. Sister Francis de Sales, S. L., was the moderator, and was assisted by Sister M. Harriet, Sister M. Alonza, and Sister M. Roberta.

The Hall of Horrors, a Circus under the big top, and puppet shows provided special surprises and fun for the hundreds of children that visited the Karnival grounds located on Nerinx Hall campus.

The chairmen of the various events of the Karnival as appointed by Julienne were as follows:

Ice Cream.....	E. Byrne, D. Winkler
Cake Walk.....	K. Bryan, M. Cleary
Ring Toss.....	J. Halbruegger, J. Ludwig
Lei Booth.....	V. Sartorius, M. Wall
Cold Drinks.....	R. Guthrie, H. Lesage
Popcorn Balls.....	R. Craft, M. Heckwolf
Pony Rides.....	M. J. McNamara, M. Reed
Wheel of Fortune.....	C. Baine, J. Tinker
Bathing Beauties.....	M. Rosenthal, S. Winterer
Penny Pitch.....	P. Stuckel, G. Tulley
Fish Pond.....	R. Casey, P. Woestman, S. Woestman
Hall of Horrors.....	K. Barnicle, J. Grana, T. Roberts
Balloons.....	B. Venn, F. Sailor
Circus.....	B. Venn, C. Waye
Puppet Show.....	J. Federer, J. Hoogstraet
Candied Apples.....	M. Nischan, A. Spalding
Raffles.....	C. Braeckel, M. McCormack
Better Products Booth.....	K. Beetz, M. Schrader
Advertising.....	B. Butler, J. Mulroy
Art.....	J. McCormack, M. Ward
Lei Construction.....	M. A. Westerman
Public Address System.....	P. Beetz

# Free — For All

*Free for All* was the name of our student musicale held in the Nerinx Gymnasium on February 16 and 17. Peggy Kolasch, the chairman, and Joan Wilbret, the assistant chairman, innovated three ideas which were used in our musicale. The first was to encourage more original work, which was exemplified by the inclusion of several songs written by the students. The second was to put more emphasis on characters and costumes. The third innovation was to unify the scenes by the participation of a main character, a foreign ambassador, in each scene.

The loose plot is centered around the ambassador, played by Joan Coppelino, who takes a tour of our country. At first he is dismayed and confused by the various situations which he encounters, but as the musicale continues he gradually sees good in our country. By the finale he is enthralled, especially with the four freedoms.

Among the favorite numbers were the modern ballet in the New York scene, the boisterous *Honey Bun* chorus, the TV scene with the flapper songs *Ain't She Sweet* and *Has Anybody Seen My Gal?* and *Tumbling Tumbleweed* and *Cool Clear Water* from the Western scene.

Top: Joan Wilbret and Peg Kolasch, Musicales Chairmen.



"Gal in Calico" rehearsal: P. Kolasch, K. Clark, V. Sartorius, A. Spalding, M. Saracini, F. Martin, M. Abbott, N. Manne, R. Fuesting.



"FREE—FOR ALL" Finale.



# S. G. A. Committees

## LEADERSHIP CLINIC

Under the chairmanship of Kathleen Barnicle, president of the Coordinating Council, the Leadership Program was formed in order to develop leadership in the school and to offer opportunities for practicing leadership. As a means in attaining this purpose valuable information was presented to the student body at S. G. A. meetings. Such knowledge is considered necessary to S. G. A. members now as Catholic College students, and later as Catholic women who must be able to influence the people with whom they come in contact. A representative group of the students responsible for the Leadership Program is pictured at left: M. A. Westerman, C. Shipley, M. C. Burke, P. Kinsella, J. Welsh, V. Sartorius.

## HOUSE COMMITTEE

The House Committee, under the direction of Priscilla McCann, hall president, is composed of Mary Ellen Rich, Marian McDonald, Lucille Spalding, and Celia Braeckel. The primary purpose of this group is to make the life of the boarding students at Webster as pleasant as possible. Religious activities, social events, and information concerning current plays, concerts, or exhibits, are presented to the boarders by this committee. Regular boarders' meetings are conducted by the House Committee in order to deal with any problems that may arise.

## IVY ROOM COMMITTEE

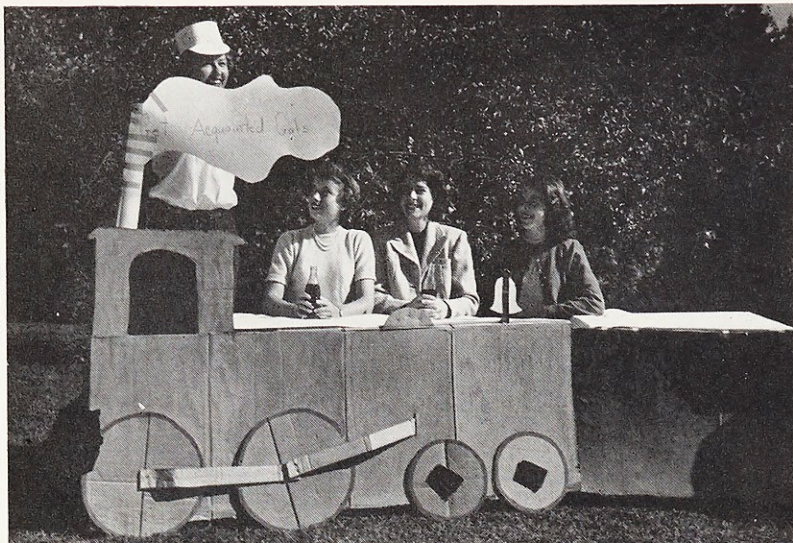
The Ivy Room Committee, as appointed by the hall president, is composed of Joan Schuler, Pat Higgins, Jo Grana, Terry Roberts, Margie Rosenthal, and Fran Sailor. The main purpose of this group is to see that Ivy Room regulations are enforced and thus keep one of the most lived in rooms of the school in a comparative state of neatness.

# Freshman Week

A week at the beginning of the academic year is set aside for the freshmen so that they may become acquainted with both the students and the various activities of Webster. Of course, there are also such prerequisites as the various examinations and registrations.

For the enjoyment of the boarding students, one evening of orientation week was dedicated to a "Meal and Reel". To become more acquainted with each other and with the male element of college life the entire freshmen class was entertained at the "Wonder Whirl" dance.

The "Symphony of Fashion" gave the New Websterites an idea of what styles are worn from very formal to the most informal occasion.



# Athletic Association



Bette Banks, president.

The Athletic Association holds monthly board meetings as well as monthly general meetings, at which time the various activities of the year are planned. The fall of the year calls forth the ping-pong enthusiasts. The champ of that tourney was Joyce Baber. The Juniors captured the volleyball tournament trophy for the year. The title of "basketball champs" went to the Freshmen, and the Seniors were victors in the newly inaugurated badminton tourney. Victories in the bridge and canasta tournament were earned by the teams of A. Schutt and R. Casey, and N. Watson and M. E. Rich, respectively.

Varsity teams, bowling, golf, swimming, open houses at the gym, and the annual Field Day and A. A. Banquet all constitute a part of this association's activities, which lead to the attainment of the A. A.'s purpose—"to promote an interest in physical development; to sponsor athletic activities; and to stimulate good fellowship and sportsmanship."



## BOARD MEMBERS

Back Row: P. Price, D. Winkler, M. Biller, T. Heumann, C. Jackson.  
 Front Row: Miss Manion, B. Banks, M. Schrader.

VOL.  
 Back Row  
 Misita  
 H. W  
 Dowd.  
 Front Row  
 Winkl  
 J. Byr  
 M. Sc  
 B. Me

C. Meyer  
 Wilson

BAS  
 Left: Fre  
 Right: Ju

BAS  
 Back Row  
 R. Nov  
 Wall, F  
 Front Row  
 K. Be  
 Stuckle  
 V. Ma  
 (captain

VOLLEY BALL VARSITY

Back Row: P. Beetz, K. Beetz, J. Misita, E. Hoffman, M. E. Shelton, H. Wehlermann, M. Lyons, R. Dowd, B. Banks.

Front Row: P. Klaric, J. Godat, D. Winkler, S. Costa, Miss Manion, J. Byrne, M. Higdon, C. Jackson, M. Schrader. Missing: R. Kono, B. Meier, M. Cook, H. Mahoney.



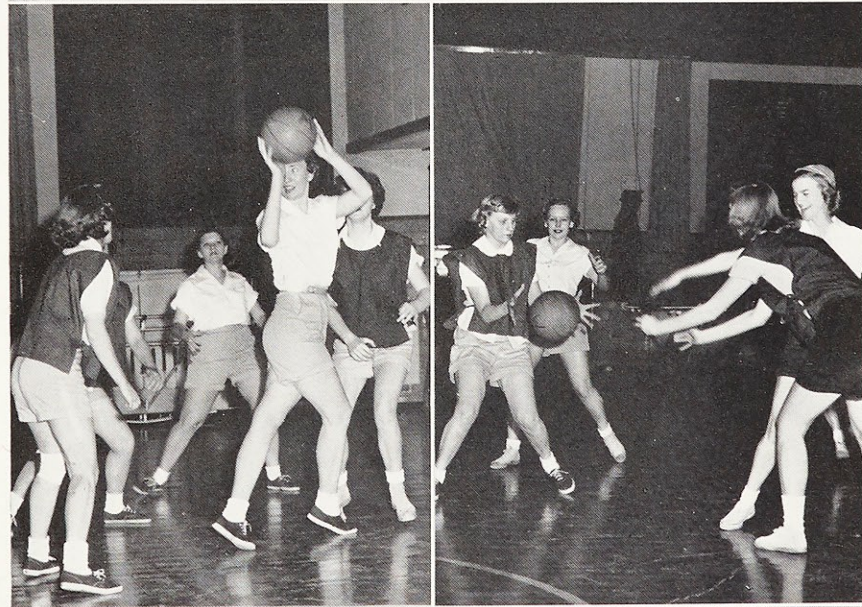
CHEERLEADERS

C. Meyer, G. Tulley, J. Penzler, N. Wilson.



BASKETBALL TOURNEY

Left: Freshies vs. Sophs.  
Right: Juniors vs. Seniors.



BASKETBALL VARSITY

Back Row: T. Heumann, M. Schrader, R. Novak, R. Craft, J. Byrne, H. Wall, P. Sullivan, B. Banks.

Front Row: Miss Manion, J. Meyer, K. Beetz, M. McCormack, P. Stuckle, C. Jackson, M. Higdon, V. May. Missing: R. Glennon (captain), M. Cook.



# Loretto Players



The dramatics club on Webster's campus, *Loretto Players*, encourages not only the drama majors, but other interested students as well, to participate in the activities of the club. This organization provides its members with the opportunity of working together as a team. The type of activities sponsored affords acting experiences, backstage maintenance, scenery construction, and makeup techniques.

At left, the camera stopped action for a moment to catch Betty Compton, Anne Quinn, and Les Benson in scenes from the year's outstanding comedy production, "Engaged".

A Lenten play, a variety of one-act plays, and innumerable skits were written and presented by the *Loretto Players'* members, under the guidance of its officers, L. Benson, vice-president; E. Compton, president; V. Feeney, treasurer, and J. Tamborn, secretary. (See picture at left.)

The Christmas party and the Student Banquet are only a few of the campus events which profited from the talents of the *Loretto Players*. A banquet brought the year's activities of this organization to a close.

Picture at lower left shows C. Waye, M. Welshans, P. Devereux, D. Smith, D. Waye, V. Rityak, J. Furrer, J. Devereux, and M. Kowsakowski, rehearsing for "Taming of the Shrew", a Shakespearean production under the direction of Mr. Harry R. McClain.

# Clubs

## MUSIC GUILD

The encouragement of an appreciation and apt enjoyment of music under the leadership of B. Ainsworth, president; P. LaPee, vice-president; M. Kowsakowski, secretary-treasurer; and M. Welshans, publicity, is the purpose of the Music Guild.

Not only classical, but semi-classical, liturgical and religious, light opera, and modern jazz are included in the monthly meetings by means of lectures, discussions, records, and performers. A program of opera excerpts was presented at the end of the year, participated in by members and music majors. Excerpts were chosen from *Madame Butterfly*, *Lakme*, *Hansel and Gretel*, and *Carmen*.



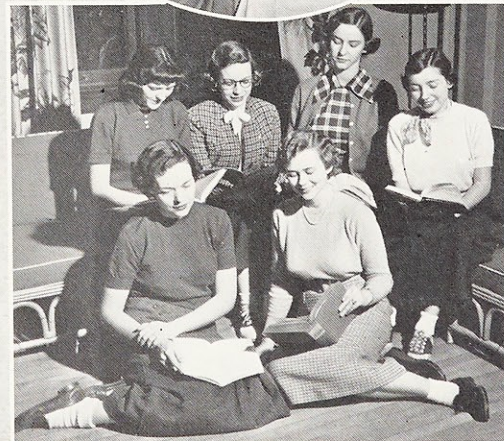
## HOME ECONOMICS CLUB

The Home Economics Club, one of the newest on Webster's campus, has for its purpose the development of interest in the field of Home Economics and the presentation of Christian ideals for the home. The monthly meetings were planned by the officers of the year, Rosemary Fuesting, president; Martha Nischan, vice-president; Blanche Rechten, secretary; Velma Higdon, treasurer. A major project was the preparation of Easter baskets for underprivileged children. The members actively participate in all club projects.



## POETRY CLUB

The Poetry Club acquaints its members with the products of outstanding poets and encourages writing of original verse. This club offers the members opportunity to express their God-given talents. In picture at right are: back row—D. Willard, secretary; E. Ainsworth, J. Garbez, president; D. Fisher; sitting—C. Shipley, archivist; J. Ludwig, vice-president.



## I. R. C.

The International Relations Club is organized to study seriously and discuss objectively international affairs, and to promote an interest in international problems among the entire student body.

Pictured at right is a representative group of the club; standing: V. Sartorius, C. Gebhart, secretary; R. Troupe, E. Lauerman, E. Hennenberger, J. Ludwig, B. Miniatas; sitting: A. Ugaya, vice-president; J. Halbruegger, M. A. Westerman, president; H. Medley, treasurer; A. Casey.



# The Web



A. Ugaya, art editor; C. Baine, news editor; M. McDonald, circulation manager; M. A. Westerman, editorial board; M. Nischan, circulation manager; C. Shipley, co-editor; M. J. Wood, editorial board; J. Ludwig, co-editor. Missing: P. McQuie, editorial board.

The *Web*, the newspaper of Webster College, is issued seven times yearly. "News, humor spiced with satire, constructive criticism, and the subtle flavor of Webster spirit merged with

a Christian attitude" is the composition of the *Web*. The purpose of this publication is to inform, to entertain, and to stimulate to sanctity.



Janet Ludwig and Carol Shipley, co-editors-in-chief.

Staff writers: C. Gebhart, V. Ritayik, P. Price, J. Furrer, R. Casey, D. Adams, J. Mulroy, A. Fincel, M. Ahrens, H. Venker.

# The Loretine

V. Sartorius, *book notes co-editor*; M. J. Wood, *editor-in-chief*; D. Fisher, *poetry editor*; P. Meyer, *associate editor*; P. Kinsella, *business manager*; J. Harrington, *art editor*; M. Reed, *assistant editor*; M. McDonald, *associate editor*; J. Garbacz, *fine arts editor*. Missing: P. McQuie, *book notes co-editor*; and A. Abbick, L. A. Bowers, and A. Sullivan, *circulation editors*.

M. J. Wood, *editor-in-chief*.



The *Loretine* is the quarterly publication which contains a variety of literary works written by Webster students. This magazine, with its editorials, short stories, poems, and articles, gives real evidence of creative work.

The *Lauretanum*, the annual publication of Webster College, endeavors to give a summary of the year's events, so as to serve as a sort of book of memories in the years to come. This year the annual has attempted to show how the various phases of life at Webster fulfill the stand of Christian education as set forth in the theme . . . advancement in wisdom, age, and grace.

# The Lauretanum



A. Ehernberger, *art editor*.  
Sister Rose Maureen, *Moderator*



Standing: N. Manne, *associate editor*; R. Novak, *circulation manager*; M. Cleary, *assistant editor*; M. Nischan, *associate editor*.  
Sitting: P. Beetz, *business manager*; M. Schrader, *editor*.

# Assemblies

P. Kolasch chatting with Miss Elizabeth Bentley, one of the assembly speakers.



Assembly programs for 1950-51 offered a wide variety of entertainment, education, and general information to the student body.

At the opening of the year, students took a trip through Europe via discussions by those who made the Holy Year Pilgrimage.

Assembly programs of a literary nature in-

cluded "How I Write My Books", by author of children's books, Covella Newcomb; "Catholic Authors", by Reverend Daniel A. Lord, S. J.; and "Poems for Children from Four to Eighty-four", by Mrs. Anne Jennings, faculty member and author of "Armchair Land."

Musical programs were provided by William S. Newman of the University of North Carolina; Mrs. Beta Popper, mezzo-soprano, of San Francisco Opera, accompanied by Dr. Jan Popper; and the students of the Music Department.

Assemblies which presented the dramatic aspect were "Macbeth", by the Catholic University Players, and "Women in the Passion", interpreted by members of the Speech Department.

The Webster College Choral Club, now called the Webster College A Cappella Choir, has become well known to the student body as a result of several assembly programs presented by this group under the direction of Miss Helen Pech.

Particular study was made on Sixteenth Century Madrigals, which are well adapted to a choral group.

Perhaps one of the most outstanding programs was the premier performance of a new cantata *Naomi and Ruth*, based on a biblical story and written by a contemporary Italian composer, Castelnuovo-Tedesco. Soloists in this selection were Jeannemarie Devereux and Marianne Kosakowski. The A Cappella Chorus also presented this cantata before the Te Deum Forum.

The spring project of the group was the rendition of four waltz love songs by Brahms with a duo piano accompaniment.



CHORAL CLUB

Back Row: M. Clements, B. Foster, E. Lebert, M. L. Cross, H. Majcen, D. Knyrim, R. Elks, P. Waye, M. K. Wilkinson.

Front Row: M. Welshans, J. Devereux, J. Panchot, M. M. Caplis, E. Offner, J. Thompson, E. Ainsworth, K. Richter, C. Parsons, R. Spalding. Missing: R. Henry, P. Ryan, M. Kosakowski, G. Luecking.

On fore stage: M. Toeniskoetter, accompanist; and Miss Helen Pech, director.

# Social Activities

Many and varied are the social activities offered to the Webster students. Tea dances introduce the social season.

The Big Sis-Little Sis relationship is encouraged through the informal Halloween party, sponsored by the Freshmen class and the St. Patrick's Day party, at which the Little Sis is treated to a box lunch by her Big Sis.

The fall of the year finds the students formally attired for the Fall Formal.

The Websterite is given the opportunity to exhibit her formal etiquette at the Dinner Dance held in honor of the Senior class.

The social season is climaxed at the Spring Dance, at which the May Queen and her court preside.

Dinner-Dance Bids on Sale: A. Rush, M. L. Brewington, P. Stuckle, M. Rosenthal.



Halloween Party.

# Christmas



Kay Clark, co-chairman of the Christmas Banquet.

*Twas the night before Christmas and throughout the house . . . began the parody emphasizing the Spirit of Giving, in an attempt to reflect the unbounding and selfless love the Infant imparts.*



Virginia May.

The colonnade, full of busy elves and their accomplishments, was transformed into "Santa's Workshop—Where Love Is Made". Blueprints of kindness, good will and peace were seen amid the sawdust, which led to the Giver of all gifts, the new-born Babe of Bethlehem. Interiors of several homes were to be seen in the Pink Room, each depicting a different celebration and concept of Christmas.

In the cafeteria was a kitchen scene, showing the preparations for the family banquet. The Ivy Room readily became home-hearth all aglow. Children watched Mom and Dad put the finishing touches on the tree. Outside could be seen carolers spreading Yuletide joy, and Santa, traveling, over the snow-covered houses.

The formal Christmas celebration began with dinner at six o'clock on Tuesday, Dec. 18, 1951. It was followed immediately by the Chapel Program, consisting of Vespers and Benediction. Entertainment in the auditorium portrayed Webster's faculty members on "The Night

# at Webster

## JUNIORS AT WORK

Top: C. Shipley, R. Novak, P. Price.



Bottom: J. Wilbert, V. Sartorius, S. Woestman (hidden), M. A. Bedel, "Peach" Sartorius, A. Ugaya, M. Nischan.

Before Christmas in St. Nicholas' Orphanage". In keeping with the Spirit of Giving, gifts were exchanged, and through the halls could be heard: *Happy Christmas and the blessing of God be on all.*

Arrangements for the Christmas Banquet were under the general chairmanship of the president and vice-president of the Junoir Class. Other committees were: Theme: J. Ludwig, C. Shipley; Decorations: M. C. Burke, P. Kirchner; Invitations and Escorts: A. Hewitt, M. McDonald; Programs and Favors: J. Misita, A. Ugaya; Serving: P. Fiorella, N. Manne; Food: R. Novak, M. Rosenthal; Chapel Program: J. Halbruegger, M. Hegarty; Toasts: M. A. Westerman; Entertainment: J. Herman, J. Ludwig; Presents: P. LaPee; Clean-up: E. Byrne.



Committee Heads of Junior Christmas Project.

# Banquets

Mother-Daughter Brunch.

Father-Daughter Banquet.



## MOTHER-DAUGHTER BRUNCH

The Sodality of Our Lady sponsored a Mother-Daughter Brunch on February 17. The boarders and their mothers attended Mass and Communion in the Chapel, while the day-hops and their mothers went to their own parish churches. All meet in the cafeteria at 10:30 a. m. for brunch. Reverend John Bagen was guest speaker for the occasion. Entertainment was furnished under the direction of Terry Roberts.

## FATHER-DAUGHTER BANQUET

Webster students had one of the best dates of the year on February 18 at the Club Caprice of the Sheraton Hotel. The occasion was the annual Father-Daughter Banquet sponsored by the Fathers Club of Nerinx Hall and Webster

College. One of the outstanding speakers of the evening was Reverend P. Sattler, C. Ss. M. Following entertainment conducted by Terry Roberts, in which both Dads and daughters took part, students danced with their favorite "dates" to the music of Hal Havird's orchestra.

## STUDENT BANQUET

The Student Banquet is an annual social affair under the supervision of the Sophomore class. It took place on the evening of May 26. The sophomores chose the theme, "Man from Mars", which was carried out in the decorations at the banquet and also in the skit which followed. Emily Byrne, president of the Sophomore class, was chairman for the banquet. A toast and a gift was received by each Senior at the end of the evening.

# May Day

The annual May Day is one of the most festive events at Webster. The event includes coronation of the new Queen and her court, entertainment for the Queen, Benediction of the Blessed Sacrament, and a formal dance in the evening.

Mary Alice Franzman was the retiring Queen. The new court included Julia Malapit, Mary Margaret Richardson, and Cathy Higgins of the Senior Class; Joan Welsh and Dorothy Fisher of the Junior Class; Mary Claire Burke and Martha Cummings of the Sophomore Class; and Jean Mulroy and JoAnn Meyer of the Freshman Class. Dolly Wittges was crowned as new May Day Queen. Seniors formed the Daisy Chain, a guard of honor for the May Court.

M. Belcher was general chairman of the May Day event assisted by C. Braeckel, program chairman; V. Feeney and M. E. Downey, co-chairmen of the outdoor arrangement; D. Fisher and P. Kolasch, directors of the May Pole Dance.



Dolly Wittges, May Queen.



J. Mulroy, M. C. Burke, J. Welsh, J. Malapit, M. A. Franzman, D. Wittges, M. M. Richardson, C. Higgins, D. Fisher, M. Cummings, J. Meyer.





Formal Photographs  
FLANNERY STUDIO

Informal Photographs  
SISTER M. GERMAINE, S. L.  
GLENN OGLE  
CARLISLE McCARTHY

Printing  
WIESE-BARNES PRINTING CO.  
CHARLES C. GRIMM

Engraving  
CENTRAL ENGRAVING COMPANY  
HARRY J. SWAIN, JR.

Binding  
THE BECKTOLD COMPANY