

Lauretunum

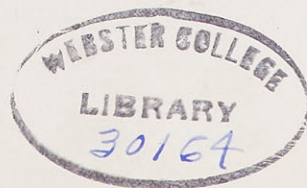
NINETEEN FORTY SIX

1946



*The Lauretanum
of
Nineteen Hundred
and Forty-Six*

One





Webster in Shadow

Webster's Peace

Despite the rush of classes, the round of activities, the bustle of daily living, Webster is essentially peaceful. Not the peace of inactivity, but the peace of satisfaction in knowing that you are doing something worthwhile; peace in knowing that you are working for and with an Ideal.



The Reach of Webster's Ideal

Webster's Choice

When the news came that Archbishop Glennon had been chosen to become a Prince of the Church, the staff decided to dedicate the 1946 **Lauretanum** to him. He graciously accepted and promised to write a few words of inspiration for the book. What he would have said, we do not know, but feel he would have encouraged us to be ideal Catholic leaders in the world of today—to be true followers in the footsteps of Christ. We regret his death, but know that heaven has gained a prince and a saint and realizing what a true inspiration his life can be to all of us, we dedicate the **Lauretanum** of 1946 to

John Cardinal Glennon
(1862-1946)



His Eminence



Webster's Seniors

With confidence and
trust born of Webster's
ideals they face the future.
With prayers and best
wishes we see them on
their way.

Anne Marie Alsobrook

Portageville, Missouri

A.B. IN HISTORY

A Webster essential—she supports, she contributes, she applauds. Penchant for pantomime . . . Canadian collegian for a summer . . . A grade A friend who always has her sunny side up.



Senior



Veronica Ann Deutschmann

Kirkwood, Missouri

B.S. IN CHEMISTRY

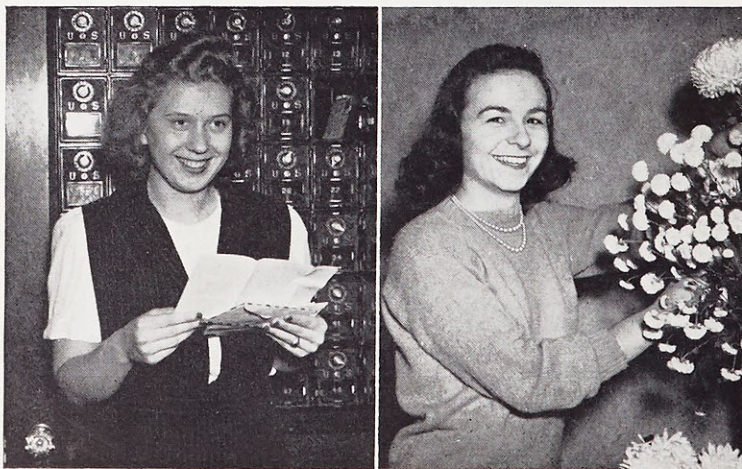
Wisp of a wizard at math or chem . . . Vivacious Vera's dewy freshness reflects floral environment. Mischievous elfin eyes . . . Puckish grin.

ANNE MARIE

Sodality '43, '44, '45, '46
French Club '43, '44, '45, '46
Sociology Club '44, '45, '46
Dramatic Club '43, '44, '45, '46
Laval University Scholarship '45
Athletic Association '43, '44, '45, '46

VERA

Sodality '43, '44, '45, '46
Spanish Club '43, '44
Science Club '45
Red Room Committee '46
Secretary of West Side Section Club '46
Chemistry Award '43



Class

Mary Fitzgerald

St. Louis, Missouri

B.S. IN CHEMISTRY

Tailored lady to perfection . . . Mild, untroubled . . . Test tubes respond to her touch. Balances valences and budgets . . . Quietly quiet . . . Pleasantly poised.



Doris Audrey Federer

St. Louis, Missouri

A.B. IN HISTORY

Webster's Star interlocutor—can double for a board of experts when the occasion demands. Confident . . . Mind for mythology, head for history . . . The Earnest type.

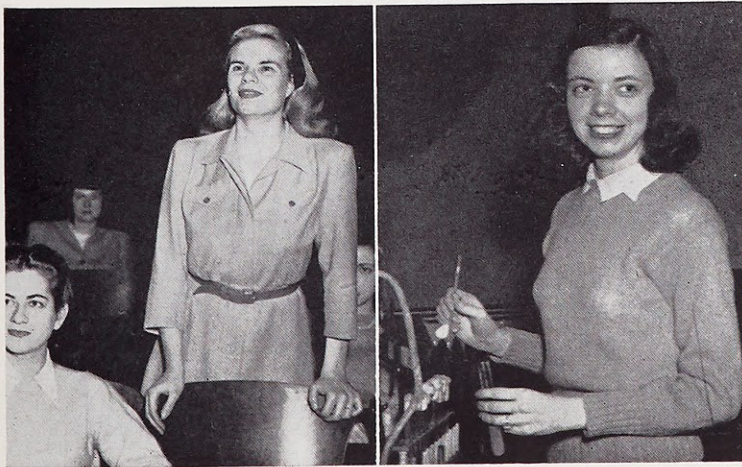


DORIS

Sodality '43, '44, '45, '46
Classical Club '43, '44, '45, '46
International Relations Club '43, '44, '45, '46
French Club '43, '44, '45, '46
Web '43, Columnist '44
Dietetics Club '44
Eta Sigma Phi '43, '44, '45
Eleanor Lyons Schlafly Debating Medal '43
Shakespeare '46
Voice Recital '46

MARY

Sodality '43, '44, '45, '46
Student Spiritual Council '45, '46
Class President '43
Student Government Board '43
French Club '43, '44
Dietetics Club '43, '44
South Side Section Club '43, '44, '45, '46
Chemistry Club '43, '44, '45
Chairman, Expense Accounts for Day Hops '46



Catherine Jane Fitzsimons

Kansas City, Missouri

A.B. IN SOCIOLOGY

Food was her love, but now runs second.
Sociably inclined . . . Tantalizing . . . Eyes
gleam mischief . . . Proud of her home town
. . . Provocative . . . Photogenic.



Senior



Marie Gillespie

St. Louis, Missouri

A.B. IN ENGLISH

Dreamy . . . Fanciful . . . Kitten softness . . .
Sunshine-after-the-rain smile . . . Forte for writ-
ing—poems or short stories . . . Unruffled
tranquility.

JANE

Sodality '43, '44, '45, '46
Lauretanum Associate Editor '45
Web Staff '43, Circulation Manager '46
Sociology Club '43, '44, Secretary '45,
President '46
Intercollegiate Sociology President '46
French Club '43, '44, '46
Dietetics Club '44
Dramatics Club '43, '44, '45
Athletic Award '45
K. C. Section Club '45, '46, Treasurer '44
Guard '43, '44, '45, '46

SUGAR

Sodality '43, '44, '45, '46
Class Mission Representative '45
Lauretanum Associate Editor '45
Web Staff '43, '44, '45
English Club '45, '46, President '46
Poetry Club '46
Spanish Club '43
Dietetics Club '43, '45
Chemistry Club '43



ior

Class

Joan Marie Harrigan

Evanston, Illinois

A.B. IN SOCIOLOGY

Pinned to Ted and keyed to Red Room . . .
"A darling girl." Chatter as bubbly as a lemon
coke . . . Smooth . . . She'll never tell!



Alice Marie Grosdidier

St. Paul, Kansas

A.B. IN SOCIOLOGY

Calm beauty of a Murillo Madonna . . .
Dependable . . . Circulates the **Loretine** and
helps weave the **Web**. Sincere and serious
. . . An asset to Webster.

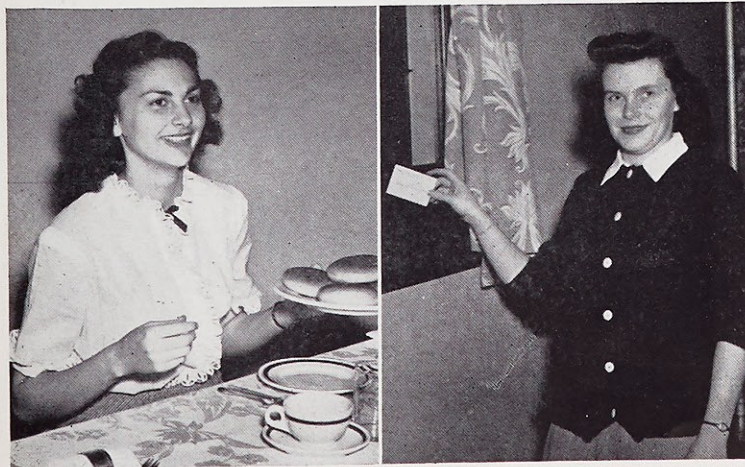


ALICE MARIE

College of Paola, Paola, Kansas, '43, '44
Sodality Prefect
Secretary of Kansas State Sodality Union
Webster College '45, '46
International Relations Club '45, '46
Web Assistant Editor '46
Loretine Circulation Manager '46
Spanish Club '45
Sociology Club '45

JOAN

Mundelein College '43
Sodality '44, '45, '46
Hall President '46
Rules and Regulations Committee '46
House Committee '46
Student Spiritual Council '45, '46
Musicale '45, '46
Manager of Varsity '44, '45
Student Government Board '46
Sociology Club '45, '46
Math Club '45
Orchestra '44, '45
Spanish Club '44
NFCCS Delegate '45
Athletic Board '44, '45



Marcella Kommer

St. Louis, Missouri
A.B. IN SOCIOLOGY

Delightful individualist from the tip of her bangs to her comfy shoes . . . The artist in our midst . . . Tailored and trim . . . Solves social problems and printers' layouts with equal ease.



Senior



Teresa Bernice Koster

Eldred, Illinois
B.S. IN CHEMISTRY

Neighborly, genial, lab-loving Bernice went "guardedly" through Webster. Staunch supporter of all things Webster . . . Popular proctor . . . Leisurely to the core, she'll take life's storms "under easy sail."

MARCELLA

Sodality '43, '44, '45
Editor of *Lauretanum* '45
Editor of Intercollegiate Sociological Association Paper, '46
Vice-President of Classical Club '44
Music Guild '44
Spanish Club '43, '44
English Club '45
Sociology Club '44, '45, '46

BERNICE

Sodality '43, '44, '45, '46
Dramatic Club '43, '44, '45, '46
Chemistry Club '43, '45
Spanish Club '43, '44
Illinois Section Club '43, '44, '45, '46
Shakespeare '43, '45
Guard '43, '44, '45, '46



Class

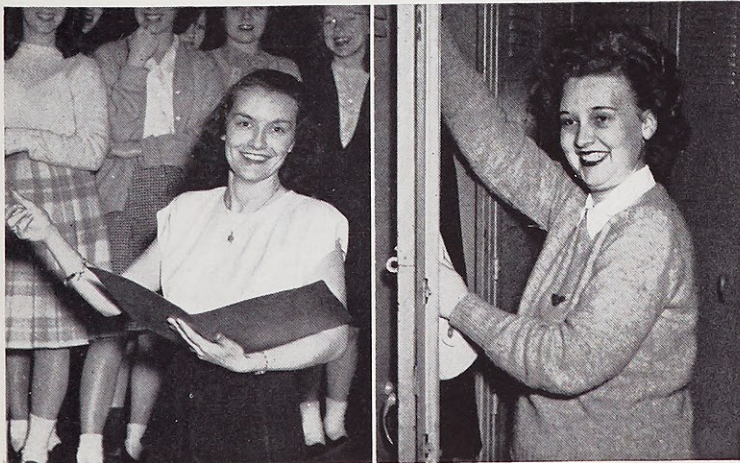


Kathie Lambrechts

St. Louis, Missouri

A.B. IN SPEECH

Only a movie camera could take a typical shot. Makes melodies with Mac . . . Warm-hearted and gay . . . Quicksilver repartee . . . Made "His Majesty's Memories" ours.

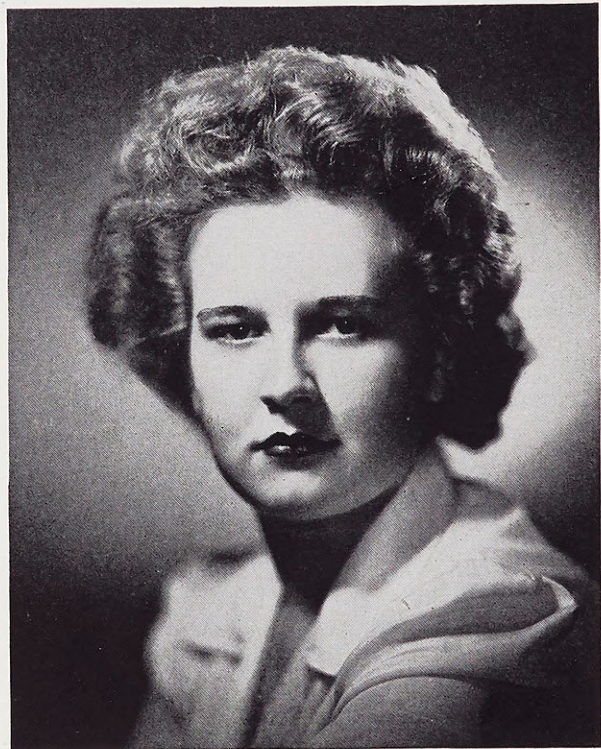


Shirley Lampman

St. Louis, Missouri

B.S. IN DIETETICS

Jovial . . . Fun . . . Santa Claus Success . . . Always on hand for bridge . . . Laughter hearty and infectious . . . Took us out to the ballgame.



KATHIE

Sodality '43, '44, '45, '46, Treasurer '45
 Student Spiritual Council '45, '46
 Spanish Club '43, '44
 Press Club '43
 Chairman Freshmen Hallowe'en Party '43
Web Staff '43, '44, '45
 Sophomore Class Treasurer '44
 Dramatics Club, Vice-President '45,
 President '46
 Musicales '45, Directress '46
 Who's Who '45, '46
 Freshman Advisory Board '46
 Shakesperean Award '45

SHIRLEY

Sodality '43, '44, '45, '46
 Spanish Club '43, '44
 Dietetics Club '43, '44, '45, Vice-President '46
 Editor of Diet Paper, '45
 Chemistry Club '43, '45
 President of North Side Section Club
 Athletic Board '45
 Treasurer of Athletic Association '45
 Varsity Basketball '43, '44
 Nominating Committee '43

Louise Lovely

St. Louis, Missouri

A.B. IN LATIN

Considerate . . . Sympathetic . . . Astute classicist . . . Responsive and cooperative . . . Dissertative delvings into St. Augustine . . . Tutors and teaches . . . A privilege to know her.



Senior



Joan Lubeley

St. Louis, Missouri

A.B. IN ENGLISH

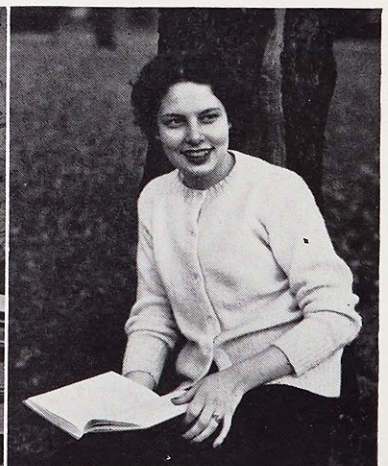
Philosophical about everything including late copy and at-hand deadlines . . . Gentle . . . Blithe . . . Buoyant . . . Pink cheeked freshness . . . Eyes bright with small-girl wonderment.

LOUISE

- Sodality '41, '42, '43, '46
- Spanish Club '41, '42, '43
- Classical Club '43, '46
- Chairman of Classical Club Program Planning '46
- Athletic Association '41, '42, '43, '46

JOAN

- Sodality '43, '44, '45, '46
- Web Staff '44, '45, Co-Editor '46
- Loretine Staff '44
- Spanish Club '43, '44
- Music Guild '44
- Sociology Club '44, '45, '46
- English Club Vice-President '45, Secretary '46
- South St. Louis Section Club '44, '46,
- Secretary-Treasurer '45
- Classical Club '44
- Campus Guide Committee '45



Class

Margaret Ellen Letzig

Little Rock, Arkansas
A.B. IN SOCIOLOGY

"Ray" of Arkansas sunshine . . . Bright smile . . . Her own pink room . . . Curiosity about New York . . . Checked and noted for Student Government—many a board moment!



Margaret Mary Lowey

St. Louis, Missouri
A.B. IN SOCIOLOGY

Peg o' Tom's heart and Webster's too . . . Impetuous . . . Impish . . . Her toppers typify her tip-top personality. Initiation investigator . . . Setting out to set society right.



PEGGY

Sodality '43, '44, '45, '46
Student Government Board '46,
Senior Representative
Sociology Club '45, '46, President '45
Vice-President Intercollegiate Sociology Club '45
Sociology Award '44
Nominating Committee '45
North Side Section Club '43, '44, '45, '46,
Secretary '44
Chairman of Initiation Investigation Committee '46

MEL

Sodality '43, '44, '45, '46
Student Government Board '45, '46
Treasurer Student Government Association '45
Secretary Student Government Association '46
Faculty Representative to Board '46
Junior Class Representative to Board '45
Who's Who '46
Cheerleader '43, '44
Sociology Club '44, '45, '46
Spanish Club '43, '44, '45
Dietetics Club '45
Dramatic Club '43
Shakespeare '43
Southern Section Club Historian '44
Class Volleyball '43, '44, '45, '46
Athletic Letter '45

Bette Macken

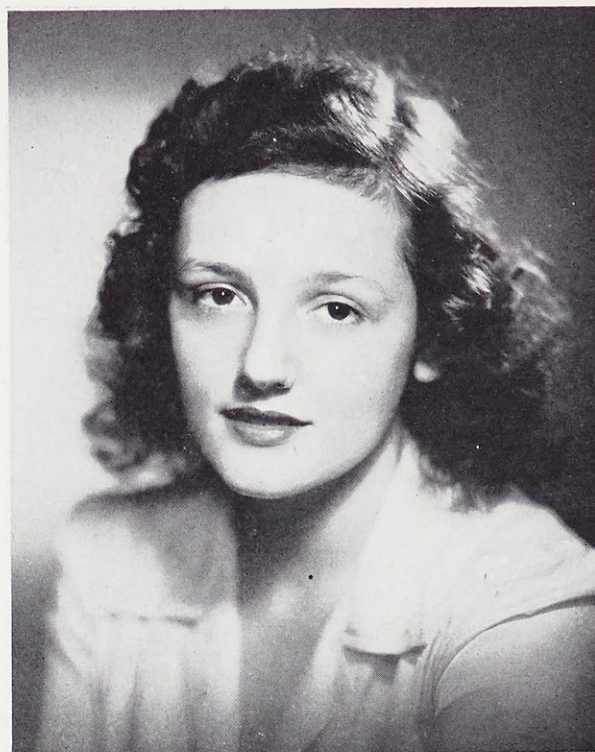
Normandy, Missouri

A.B. IN SOCIOLOGY

Other half of the Melody . . . Energy to spare . . . Friendly . . . Whirlwind on Switchboard . . . Missionary minded . . . Delightful blarney . . . Interest in geophysics . . . Leader in Mary's Legion.



Senior



Margaret Marie Mills

Kankakee, Illinois

A.B. IN ENGLISH

Sympathetic understanding . . . Willingness to help . . . Loyal, conscientious, practical as pancakes . . . Enthusiastic for education. Bright eyes will trust in her.

BETTE

Sodality '43, '44, '45, Prefect '46
Student Spiritual Council '45, '46
President C.S.M.C. '45
Student Government Board '46
Who's Who '46
Bond Drive Chairman '44
Web Staff '43, '44, Business Manager '45,
Associate Editor '46
Sociology Club '43, '44, '45, '46
Spanish Club '43, '44
South Side Section Club '45, Publicity '44, '46
Dramatic Club '45, '46

MARGARET

Sodality '43, '44, '45, '46
Dramatics Club '44, '45, '46
English Club '45, '46
French Club '43, '44
Illinois Section Club '43, '44, '45, '46
Shakespeare '44, '45
Web Staff '46
Red Room Committee Chairman '46



Class

Margaret Jean Morgan

Clayton, Missouri
B.S. IN DIETETICS

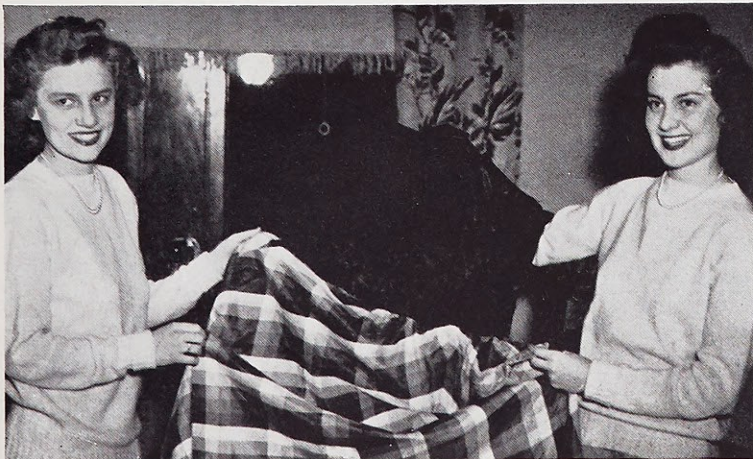
Kept our Ball rolling smoothly . . . Disarming smile . . . Sparkling eyes . . . The lady dances. Manages menus . . . New York veteran . . . Memorable May Maid.



Helen Jeanette Morgan

Clayton, Missouri
B.S. IN DIETETICS

Amiable smile . . . graceful and feminine . . . Dimpled dietitian . . . Jeanette is not the brunette. Happy with living . . . She started the Ball rolling.



JEANETTE

Sodality '43, '44, '45, '46
Student Spiritual Council '43
Mission Representative '44
Class Secretary '45, '46
Chemistry Club '43, '45
Dietetics Club '43, '44, '45, Co-President '46
Co-Chairman of the Ball '46
Diet Training Course, New York, '45

JEAN

Sodality '43, '44, '45, '46
Nominating Committee '45
May Maid '45
Loretine Staff '46
French Club '43, '44
Chemistry Club '43, '45
Dietetics Club '43, '44, '45, '46
Associate Editor of Diet Paper '44,
Vice-President '45, Co-President '46
Orchestra '43, '44, '45, '46
Co-Chairman of Ball '46
Diet Training Course, New York, '45

Catherine Mitchell

Clayton, Missouri

DIETETICS

Culbertson's star pupil . . . Queen of the grand slam . . . Reserved . . . Reticent . . . Made Webster love "Snowflakes." We'll remember her when "it is Christmas here . . ."



Senior



Marilyn Jeanne Morheuser

St. Louis, Missouri

A.B. IN ENGLISH

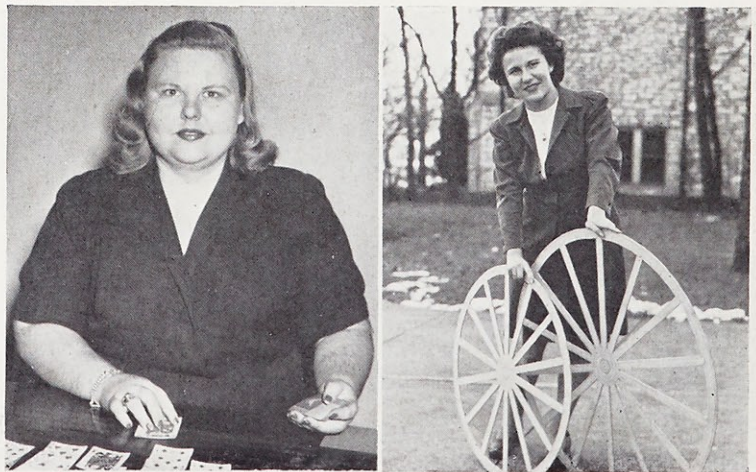
"Moe"—everyone's friend . . . Her time is our time. Kept Webster's wheels rolling. True talent and tact . . . Her future as bright and inspirational as each day she gave to Webster.

CATHERINE

- Sodality '43, '44, '45, '46
- Athletic Association '43, '44, '45, '46
- Spanish Club '43, '44
- Science Club '44, '45
- Dietetics Club '43, '44, '45, '46

MARILYN

- Sodality '43, '44, '45, '46
- Student Spiritual Council '46
- Student Government Board '44, '45, '46,
- Class Representative '44, Vice-President '45, President '46
- Class President '45
- Mission Representative '43
- Budget Committee '44
- Who's Who '45, '46
- Religion Award '43
- American History Award '45
- Web Staff '43, '44, '45
- Spanish Club '43, '44
- International Relations Club '43
- English Club '45, '46
- Christmas Pageant '43, '44, '45



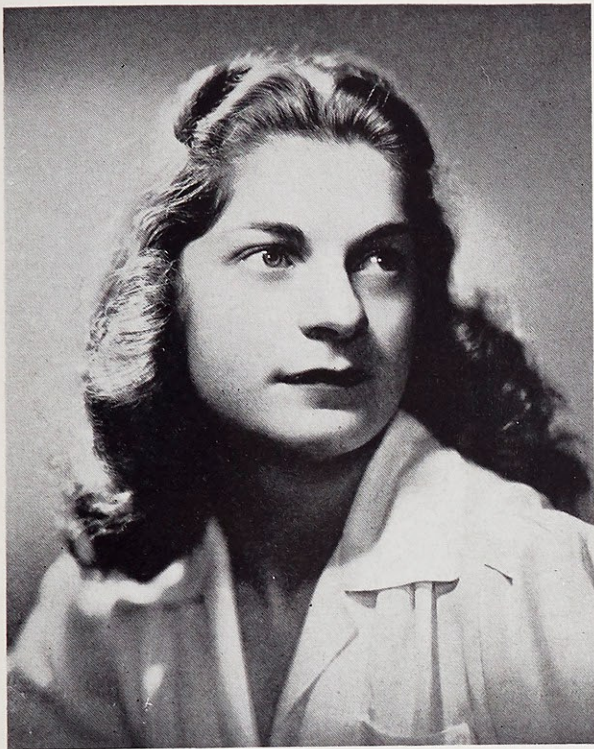
Class

Margaret Mary Nickolaus

St. Louis, Missouri

A.B. IN ENGLISH

Intellectually alive . . . In the sodality swing . . . "Clair de Lune" at noon . . . Intriguing accent . . . Poised . . . Artistic . . . Mad about Milton.



Christine Marie Musso

Walsenburg, Colorado

B.S. IN DIETETICS

Star-dusty eyes . . . Liltng laugh . . . At home in chem lab or kitchen . . . "Sweetheart of Sigma Chi." A dream walking in formals or frills.

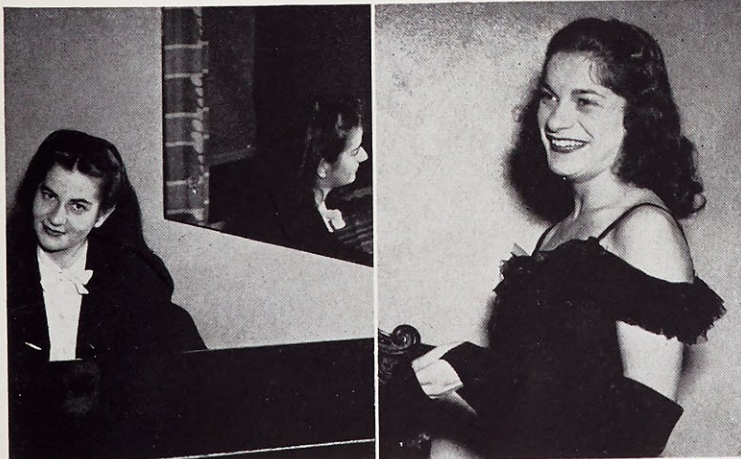


CHRIS

Sodality '43, '44, '45, '46
 Science Club '43, Vice-President '45
 French Club '43, '44
 House Committee Representative '44, '45, '46
 Dietetics Club '44, '45, '46, Treasurer '46
 Western Section Club '43, '44, '45, '46,
 Secretary '44, President '45, '46
 Vice-President, Junior Class, '45
 Treasurer, Senior Class, '46
 Athletic Association '43, '44, '45, '46
 Chairman of Carnival Raffle '44
 Sociology Club '45

NIKI

Sodality '43, '44, '45, '46, Secretary '44,
 Vice-Prefect '45
 Student Spiritual Council '44, '45, '46
 Sociology Club '44, '45, '46
 Classical Club '44, '45, Treasurer '45
 English Club '46
 French Club '43, '44, '45, '46
 Who's Who '45, '46
Web Staff '45, '46
Loretine Staff '45, '46
 South Side Section Club '44, '45, '46,
 President '46
 May Maid '45

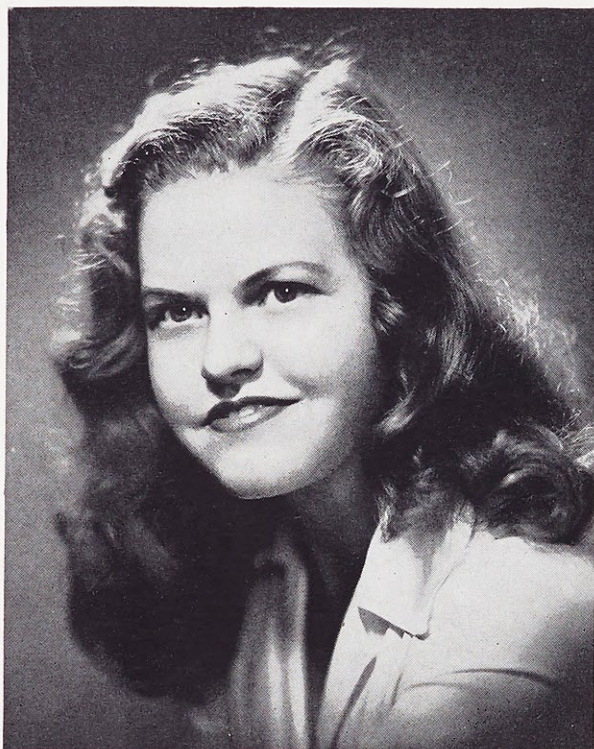


Margaret Louise O'Brien

St. Louis, Missouri

A.B. IN FRENCH

Best of booth builders . . . Hibernia twinkles in the eyes of Webster's Annapolis ambassador. Spirit undaunted by carnivals or comprehensives. Gracious, lively . . . Behind her smile lies wit and wisdom.



Senior



Margaret Mary O'Neill

Kansas City, Missouri

A.B. IN SOCIOLOGY

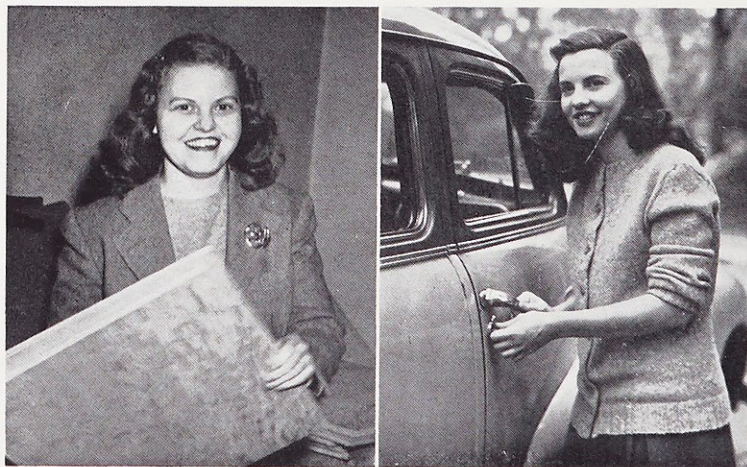
Second generation Websterite . . . "Putts" around . . . Ed-ucated sociologically . . . Piquant . . . Collegiate colleen . . . "Sweet personality full of rascality—that's Peggy O'Neill." Webster's heart hugs her.

MARGIE

Sodality '43, '44, '45, '46
Student Spiritual Council '46
French Club '43, '44, Secretary-Treasurer '45,
President '46
International Relations Club '45
Class Secretary '44
Class Vice-President '46
Hartz French Award '43
Laval University Scholarship '44
Web Staff '43, '44
Loretine Associate Editor '45
Assistant Editor '46
Lauretanum Circulation Manager '45
Hey Day Chairman '45
Chairman of Carnival '46
Campus Guide Committee '46

PEGGY

Sodality '43, '44, '45, '46
Student Government Board '44, '45, '46
Class President '44, '46
Class Representative '45
Varsity Basketball '43, '44
Web Staff '43, '45
Loretine Staff '46
Who's Who '46
French Club '43, '44
Dietetics Club '45
Sociology Club '45, '46
Rules and Regulations Committee '44, '46
Nominating Committee '44
Dramatic Club '43
Chairman of Student Trip, Notre Dame, '45
Bond Chairman '46



Senior

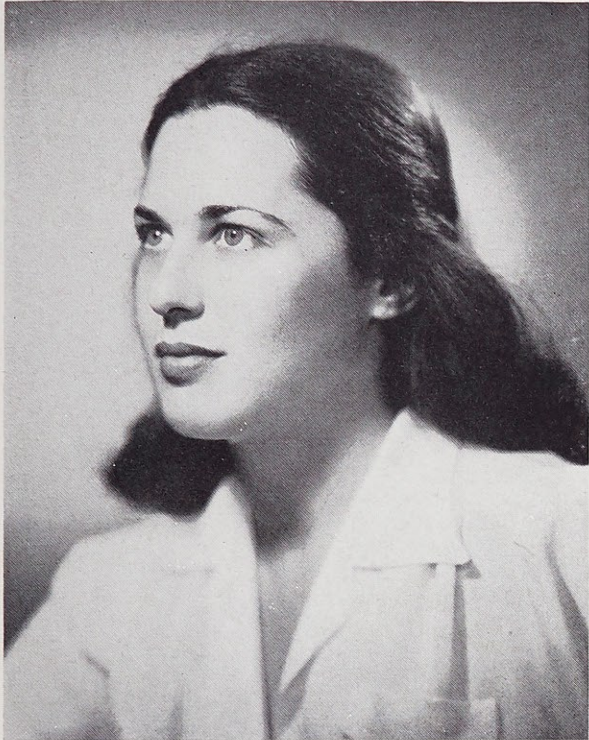
Class

Ann Margaret Skidmore

St. Louis, Missouri

A.B. IN SPEECH

A twinkle in her eye to match the sparkle on her hand . . . Pert pedagogue . . . "Skid"-ed through Webster . . . Our own Peter Pan—her world's a stage.



Mary Ann Planthold

St. Louis, Missouri

SOCIOLOGY

His Majesty's sweetest memory . . . Dancing eyes . . . Velvet laughter . . . Winsome way . . . Peaceful personality plus queenly grace . . . Her sweetness matches her goodness.



Neill

"Putts"
Piquant
personality
eill." Web-



MARY ANN

- Sodality '43, '44, '45, '46
- Classical Club '43
- French Club '43, '44
- Sociology Club '45, '46
- Queen, His Majesty's Memories '46

ANN

- Sodality '43, '44, '45, '46
- Spanish Club '43, '44
- Dramatic Club '43, '44, '45, '46
- Loretto Players '43, '44, '45, '46,
Secretary-Treasurer '46
- Speech Award '44
- Athletic Association '43, '44, '45, '46

Dorothy Van Hoogstrate

St. Louis, Missouri

A.B. IN ENGLISH

In step with the times—whether fashions or politics . . . Chic . . . Has a priority on efficiency . . . **Loretine** Legree . . . Charming and scintillating . . . Could converse with Shakespeare or Stassen.



Senior



Therese Wand

Litchfield, Illinois

B.S. IN CHEMISTRY

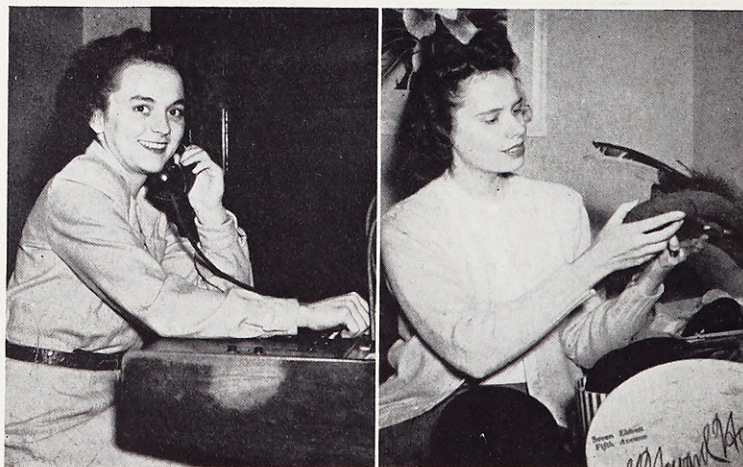
Endless energy . . . Captain in basketball . . . Major in chemistry . . . Mathematically minded math minor . . . Terry's warm and constant nature rings true.

DOROTHY

Sodality '43, '44, '54, '46
Loretine '44, Associate Editor '45, Editor '46
International Relations Club '45, President '46
Web '43, '44, Feature Editor '45
St. Louis University News Reporter '45
May Maid '43
Mademoiselle College Board '45
Loretto Foundation Student Chairman '46
Philological Society of Missouri, Academy of Science, President '46
Nominating Committee '45, '46
English Club '45, '46
Sociology Club '45
Spanish Club '43
Who's Who '46

TERRY

Sodality '43, '44, '45, '46
Athletic Association '43, '44, '45, '46, President '46
Varsity '44, '45, '46, Captain '46
Chemistry Club '43, '44, '45
Spanish Club '43, '44
Math Club '44
Musicale '45
Lauretanum Staff, Business Manager, '45
Red Room Committee, '45
Maintenance Committee '46
May Day, Chairman of Decorations, '44
Eastern Section Club '43, '44, '45, '46, Secretary '46
Class Bond Representative '45



Senior

Class



Catherine Wheeler

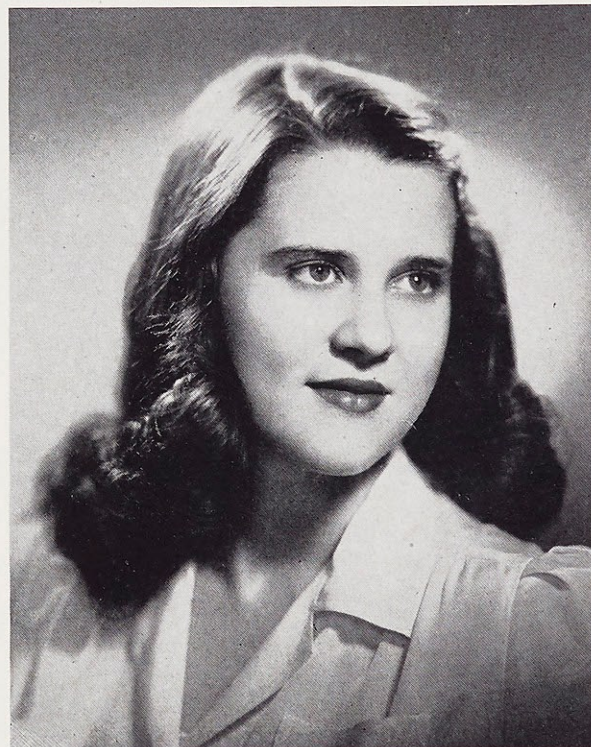
St. Louis, Missouri
A.B. IN SOCIOLOGY

Whimsical . . . Wondering . . . "Sleepy"—
Sunday morning surprise when Kay edges into
chapel ahead of Father. "Lucky Strike" for
Webster . . . Kurious Katie.

Jean Willard

Knoxville, Tennessee
A.B. IN SOCIOLOGY

Webster's shy May queen blossomed into
pin-up girl of a radar crew. Southern serenity
. . . Jack-in-the-box dimples . . . A sure success
in sociology.



basketball
thematically
warm and



KAY

- Sodality '43, '44, '45, '46
- Class Treasurer '43, '45
- Rules and Regulations Committee '45
- Nominating Committee, Sodality, '45
- Eastern Section Club President '46
- Athletic Board '45
- Manager of Varsity '45
- French Club '43, '45
- Sociology Club '45, '46
- Dietetics Club '44
- Orchestra '44, '45
- Music Guild '44

JEAN

- Sodality '43, '44, '45, '46
- Spanish Club '43, '44
- President of Southern Section Club '46
- Sociology Club '45, '46
- May Queen '45
- Web Staff '45

Irene Ann Leis

St. Louis, Missouri
A.B. IN SOCIOLOGY

Intellectually curious . . . Puts her sociology classwork into action . . . Ever eager to aid . . . Tried touring this year—Kentucky and Colorado.



Senior



June Lerwekh

Chicago, Illinois
B.S. IN CHEMISTRY

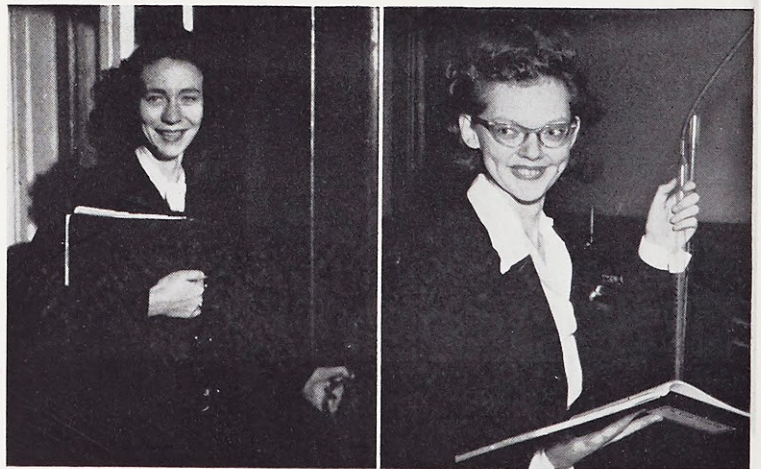
Chem lab luminary . . . June knows just where she's going and there's a position open for the biographer of Webster's own Professor Meitner. Friend of Father Pete.

IRENE

Sodality '43, '44, '45, '46
Sociology Club '45, '46, Treasurer '45
Spanish Club '43, '44
Dietetics Club '43, '44
Chemistry Club '43
North St. Louis Section Club '43, '44, '45, '46

JUNE

Sodality '45, '46
Science Club '43, '44, '45
French Club '43, '44
Web Reporter '43



Senior Class

The Royal House of Webster,
With daughters by the score,
Has chosen from its number
These lovely thirty-four,

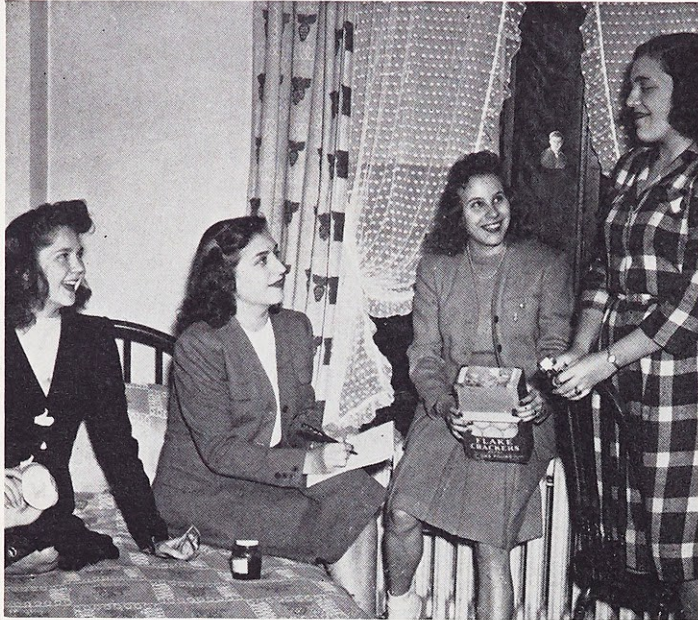
And giving them a dowry
Of wisdom, love and grace,
With "Godspeed" has sent them
Into the world apace.

There shall they seek their fortunes,
And seeking them shall find
How all things Webster-learned
Have enobled heart and mind.

And whether they choose to be Marthas,
Or to seek out Mary's part,
The House of Webster shall always
Gather them close to her heart.

B. C.

Junior



M. Riffel, Treasurer; M. A. Powell, Secretary; J. Sanfleben, Vice-President; P. Jostedt, President.



M. J. Reid, M. L. Rogers, A. Chase, R. M. Reid, P. Powers.



B. Lauderdale, T. Bernard, B. Cooper, B. J. Wolff, D. McAvoy.



R. Burns, L. Paden, P. Manion, K. Miles, C. Hennenfent.

Trudy Bernard
 Jean Blottman
 Rosemary Burns
 Anne Harmon Chase
 Jacque Chauvin
 Betty Convy
 Betty Cooper

Virginia Dill
 Rosalie Dunn
 Joun Fitzgerald
 Mary Clare Geerling
 Millie Harrison
 Clarita Hennenfent
 Mary Hetznecker

Pam Hoffman
 Mary Helen Hutton
 Peggy Jostedt
 Barbara Lauderdale
 Elizabeth Lattimore
 Lorraine Ludwig
 Dorothy McAvoy

nior

Class

Mary Catherine McDonough
 Eileen Maher
 Pat Manion
 Katherine Miles
 Marie Morheuser
 Aurelia Ottersbach
 Pat Nolan

Lois Paden
 Mary Arline Powell
 Pat Powers
 Mary Jane Reid
 Rose Mary Reid
 Mary Riffel
 Mary Louise Rogers

Josephine Santleben
 Mary Ann Schaaf
 Dorothy Schulte
 Pat Tyler
 Pat Walsh
 Eunice Willett
 Bette Jane Wolff



R. Dunn, E. Willett, J. Fitzgerald, D. Schulte, A. Ottersbach.



B. Convy, M. Hetznecker, M. Harrison, J. Blottman, P. Nolan.



V. Dill, P. Walsh, J. Chauvin, M. Morheuser, M. C. McDonough, P. Tyler.



M. C. Geerling, L. Ludwig, P. Hoffman, E. Maher, E. Lattimore, M. A. Schaaf, M. H. Hutton.

Sophomore

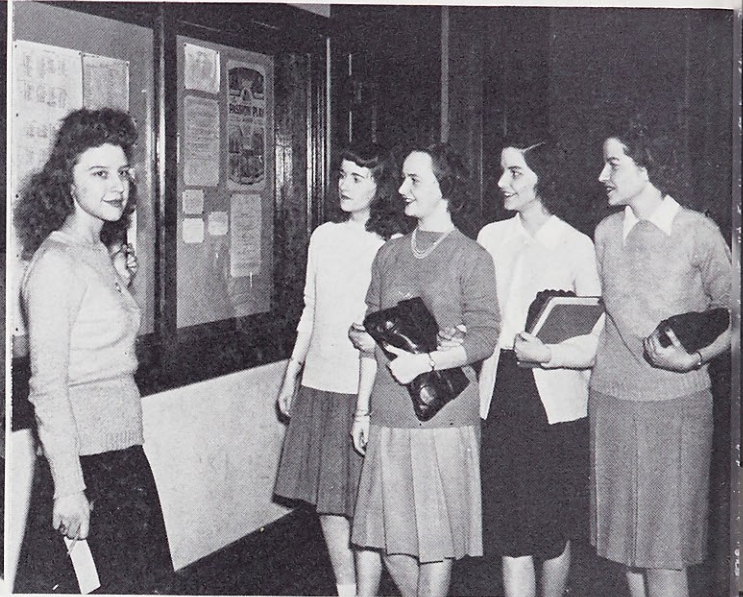
Pat Abbott
Dot Bahn
Marian Boos
Virginia Brabec

Bill Bradley
Jeanne Breville
Haydee Carrasquillo
Gloria Chickey

Colleen Cleland
Jane Clark
Mary Clifford
Rita Couch

M. Hayes, Secretary; G. Williams, President; A. A. Gabriel, Vice-President; J. Clark, Treasurer.

Y. DeLeo, R. Couch, J. A. Webb, P. Eskridge, A. Dintleman.



R. Missel, L. Vitt, J. Maquire, M. C. Sheahan, M. K. Wombacher, S. Laux.

B. Pott, D. Bahn, I. Dow, K. Mulligan, A. Webb, D. Layman, D. Schulte.

Yoma DeLeo
June Despot
Iris Dow
Betty Jo Duisen
Mary Alice Engler

Tirzah Epperson
Pat Eskridge
Grace Faherty
Marcella Falvey
Bernie Feeney

Eileen Feeney
Bernice Fields
Lois Fisher
Pat Filstead
Jean Frerker

Class

Agnes Ann Gabriel
Dot Gaines
Mary Gebhart
Peggy Goff

Jean Grennan
Helen Gregowicz
Helen Guchereau
Kax Hammes

Gloria Hesser
Marg Hayes
Marilyn Hayes
Jeanne Higgins

J. Reichenbacher, V. Rosenthal, D. Warner, M. A. Engler, G. Faherty,
A. Murray, B. J. Duisen, D. Schulte, V. L. Holtsnider.

P. Welsh, M. Wesley, L. Peck, B. Walsh, M. J. Steuver, J. Breville,
P. Goff, M. L. Kiel.



K. Hutchinson, M. J. Walker, H. Carrasquillo, D. Koziatsek,
H. Guchereau, M. C. Weaver, P. Holliger, R. Veinhage.

T. Epperson, V. Brabec, M. Hoogstraet, L. Kester, C. Kester,
L. Murphy, L. Fisher, K. Hammes

Lois Hillner
Pat Holliger
Lee Holtsnider
Lu Hotto

Muriel Hoogstraet
Carolyn Huber
Pat Hund
Katie Hutchinson

Dee Isenman
Carolyn Johnson
Virginia Jokerst
Mary Rita Jolly

Sophomore Class

Mary Lou Kiel
 Corrine Kester
 Lorraine Kester
 Mary Clare Kirchmer

Dorothy Koziatek
 Elaine Krueger
 Doris Layman
 Dorothy LeFevre

Barbara Leuchtefeld
 Mary Lynch
 Sally Laux
 Penny McMahan

L. Hillner, H. Gregowicz, M. Clifford, M. Gebhart, G. Hesser, M. Boos.

M. Hayes, B. Feeney, C. Johnson, A. Stull, E. Feeney, J. Grennan, C. Murphy.



J. Sheridan, P. Abbott, E. Krueger, P. Filstead, J. Murphy, N. Staed.

M. Lynch, C. Huber, P. Hund, B. Fields, D. Gaines, C. Bradley, L. Hotto.

Mary Fran McLaughlin
 Gerry Maguire
 Jackie Markway
 Gloria Manziel
 Catherine Means

Rose Mary Missel
 Nida Moses
 Kay Mulligan
 Catherine Murphy
 Jean Murphy

Lucy Murphy
 Anne Murray
 Rosemary Naef
 Jane O'Hara
 Lorene Peck

more *Class*

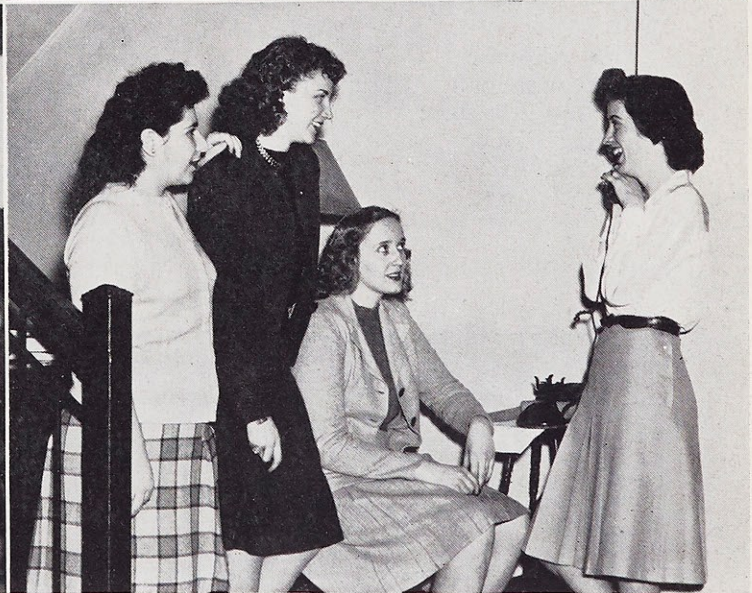
Lucy Mae Perry
Beatrice Pott
Eleanor Quick
June Reichenbacher

Marty Roberts
Virginia Rosenthal
Pauline Rousseau
Dorothy Schulte

Mary Catherine Sheahan
Nancy Staed
Mary Jeanne Steuver
Ann Stull

Other Guyot, V. Jokerst, P. Volz, J. Frecker, R. Naef, M. F. Laughlin,
E. Quick.

J. Despot, E. Madrinan, Mrs. Barnicle, B. Luechtefeld, D. LeFevre.



Means, G. Manziel, L. M. Perry, D. Isenman, M. Roberts, P. Rousseau.

N. Moses, J. O'Hara, J. Markway, M. C. Kirchmer.

Pat Volz
Rose Ann Vienhage
Louise Vitt
Mary Jewell Walker
Betty Walsh

Mary Catherine Weaver
Jane Ann Webb
Anne Louise Webb
Cissy Welsh

Dorothy Warner
Ginny Williams
Marie Wesley
Mary Kay Wombacher

Freshmen

Cl



First row: J. Alberter, G. Ballinger, F. Egan, D. Schnur, E. Doorack, J. Wanamaker, C. Richter, B. Kappel. Second row: J. Nolan, M. A. McNamara, P. Stiller, E. Nolan, C. Rogles, C. Schaller, M. C. Toole, M. L. Jameson, M. A. Coyle, C. Pombert, R. M. Hughes, A. Kopf. Third row: T. Hardey, V. Mueller, B. Wiegrefe, M. C. Mahon, H. Hilton, B. O'Driscoll, A. Gonzales, E. Gonzales, R. Gonzales, M. J. Hendricks. Fourth row: W. Pablo, M. M. Hoffman, J. Horn, T. Morin, K. Miller, S. Moosey, M. Lindsey, B. Lindsey, C. Peña, R. Riley.

June Alberter
 Mary Elizabeth Alexander
 Audrey Almstedt
 Gloria Alvaro
 Patricia Andrew
 Rosy Arango

Norma Azarki
 Mary Claire Balducci
 Geraldine Ballinger
 Rosemary Belgiglio
 Jeanne Bennett
 Gertrude Bosch

Jacqueline Brookshire
 Rachel Calderon
 Helen Callopy
 Margaret Carroll
 Loretta Cartier
 Ann Casey
 Josephine Ceresia
 Isabel Ceriotti
 Mary Ann Cleiman
 Susan Conlon
 Jerry Costello
 Mary Agnes Coyle
 Dorothy Curtin
 Kate Daly
 Patricia Deiss
 Irene Demko
 Lorraine Doerr
 Jane Donley
 Eunice Doorack
 Eileen Dunn
 Frances Egan
 Mary Claire Enghauser
 Dorothy Fay
 Margaret Ann Fillo
 Patricia Flori
 Doris Freeman
 Esther Gall
 Kathryn Lee Gehm



J. Sullivan, Sodality Representative, R. M. Saner, Treasurer, J. Moll, President, J. Payne, S. G. Board Representative, K. Daly, Vice-President, B. L. Taylor, Secretary.

Ann
 Patr
 Gla
 Ma
 Ann
 Eitel
 Ros
 Nan
 Ther
 Mar
 Hele
 Mar
 Luci
 Jean
 Ros
 Hele
 Cath
 Mar
 Mar
 Eilee
 Betty
 Mar
 Mar
 Ruth
 Anit
 Kath

Class



First row: D. Freeman, M. A. Kroner, D. Curtin, D. Samuels, E. McCormick, J. Payne, F. Smith, J. Brookshire, V. Mitchell, E. Roth. Second row: M. Kienstra, M. E. Alexander, L. Honderup, P. Reilly, R. Belfiglio, V. Stack, A. Schmidt, D. Laudicina, P. Deiss, M. F. King. Third row: C. Jostedt, A. Casey, K. Daly, B. J. Smith, R. M. Saner, J. Mazzone, K. Kramer, D. Fay, E. Dunn, R. Conrad. Fourth row: S. Conlon, P. Waller, M. S. Norris, P. Porbeck, A. Rozier, M. Killoran, J. Kraus, J. Bennett, J. Ceresia.

- Ann Gettelfinger
- Patricia Gibbons
- Gladys Giles
- Maureen Glaser
- Ann Gonzales
- Etelvina Gonzales
- Rosa Gonzales
- Nancy Harlan
- Therese Hardey
- Mary Jane Hendricks
- Helen Hilton
- Mary Margaret Hoffman
- Lucille Honderup
- Jeannette Horn
- Rosemarie Hughes
- Helen Marie Jablonski
- Catherine Jostedt
- Mary Lee Jameson
- Mary Carmela Jefferson
- Eileen Kavanaugh
- Betty Kappel
- Margaret Kienstra
- Marion Killoran
- Mary Frances King
- Ruth Konrad
- Anita Kopf
- Kathryn Kramer

- Joan Kraus
- Joan Marie Krebs
- Mary Ann Kroner
- Betty Landau
- Dorothy Laudicina
- Betty Lindsey

- Mary Lindsey
- Eileen McCormick
- Lois McGregor
- Mary McKay
- Marianne McNamara
- Mary Lee Maas



Freshman Week Officers.

Freshmen



First row: I. Demko, E. Parn, M. L. Schatzmann, A. Gettelfinger, B. L. Taylor, B. Landau, M. Enghauser, B. Nast. Second row: J. Schwerdtmann, M. Filo, A. Michenfelder, S. Minneman, M. Meyer, J. Meyer, V. Votruba, P. Gibbons, M. C. Balducci, M. J. Steffen, M. A. Schwitalla. Third row: E. M. Ponciroli, I. Ceriotti, L. Cartier, L. Doerr, J. Costello, D. Todt, R. Arango, G. Alvaro, R. Calderon. Fourth row: P. Andrew, B. Shaw, M. E. Thornhill, M. L. Maas, V. Westermayer, B. Rippley, M. J. McKay, J. Portela, G. Giles, E. Gall, M. Ramos.

Mary Catherine Mahon
Peggy Mason
Joan Mazzoni
Eileen Meier
Lois Jean Meyer
Marion Meyer

Shirley Meyer
Ann Michenfelder
Lilian Miera
Kathleen Miller
Shirley Minneman
Virginia Mitchell

Jean Moll
Selma Moosy
Therese Morin
Jacqueline Muehling
Virginia Mueller
Betty Nast
Eileen Nolan
Jean Nolan
Mary Sam Norris
Betty O'Driscoll
Janet O'Neill
Mariane Petras
Winifred Pablo
Elvira Parr
Jane Payne
Carmen Pena
Charlotte Pombert
Elva Mae Ponciroli
Margaret Ann Porbeck
Josephine Portela
Lucian Quick
Maria Ramos
Phyllis Reilly
Adeline Reinheimer
Madeline Reinheimer
Rosalie Riley
Connie Ritcher
Betty Rippley



First row: J. Serafini, N. Harlan, M. Enghauser, E. Ponciroli, J. Muehling, H. Jablonski, D. Freeman. Second row: H. Callopy, L. Quick, E. Kavanaugh, N. Spillane.

Class



First row: G. Bosch, J. O'Neill, P. Mason, R. Schmuck, J. Schmiedeskamp, J. Krebs. Second row: M. C. Jefferson, M. A. Cleiman, M. Glaser, L. McGregor, J. Sullivan, A. Reinheimer, M. Reinheimer, K. Gehm, A. Roemer. Third row: M. Unser, M. Carroll, J. Signaigo, A. Almstedt, R. M. Temme, H. Jablonski, F. Westphale, S. Meyer.

Ann Roemer
 Carole Rogles
 Evelyn Roth
 Anne Rozier
 Dorothy Samuels
 Rose Marie Saner
 Catherine Schaller
 Mary Louise Schatzman
 Anita Schmidt
 Joan Schmiedeskamp
 Rosemary Schmuck
 Doris Schnur
 Janet Schwerdtmann
 Mary Alexis Schwitalla
 Josephine Serafini
 Betty Shaw
 Jackie Signaigo
 Betty Jane Smith
 Florine Smith
 Nancy Spillane
 Virginia Ann Stack
 Mary Jane Steffen
 Priscilla Stiller
 Jean Sullivan
 Betty Louise Taylor
 Rosemary Temme
 Mary Elizabeth Thornhill

Dorothy Todt
 Mary Claire Toole
 Margaret Unser
 Verna Votruba
 Gloria Vietin
 Patricia Waller

Jean Wanamaker
 Veronica Westermayer
 Florence Westphale
 Barbara Weigrefe
 Betty Whitesitt
 Nancy Wheat



First row: L. Meira, M. A. Lennon, J. Portela. Second row: G. Vieten, E. Meier, N. Azarki, J. Donley.



Webster's Activities

Through the many activities of college life the Webster girl develops Christian character—realizing her relationship with others, integrating her powers, supernaturalizing all her acts and embodying the true Webster spirit.



Bette Macken, Sodality Prefect.

Our Lady's

Prefect.....Bette Macken
 Vice-Prefect.....Jean Blottman
 Secretary.....Carolyn Johnson
 Treasurer.....Marie Morheuser
 Senior Representative.....Mary Fitzgerald
 Junior Representative.....Pat Powers
 Sophomore Representative.....Mary Lou Kiel
 Freshmen Representative.....Jean Sullivan



M. L. Rogers, M. Nickolaus, C. Johnson, J. Sullivan, K. Lambrechets, B. Macken, M. Fitzgerald, M. O'Brien, B. Convy, J. Blottman, P. Powers, J. Harrigan, Marilyn Morheuser, Marie Morheuser.

Committees	Chairmen
Apostolic.....	Pat Powers
Publicity I.....	Kathie Lambrechts
Publicity II.....	Betty Convy
Our Lady's.....	Marie Morheuser

Committees	Chairman
Mission President.....	Mary Lou Rogers
Literature.....	Margaret Nickolaus
Eucharistic.....	Margie O'Brien

Sodality

To Jesus through Mary! Reception ends strict probation period. First Friday adoration—step toward the attainment of our goal. Retreat—aid to personal sanctification. Spiritual bouquet for Poor Souls . . . Sodality Union carnival . . . Clothes and food collections for needy. Bulletin boards—clever and timely. Missionary-minded sodalists—Catechism at St. Malachy's. Cake Bake sale—bicycle for missionary. Lenten mite boxes . . . Memoraries for Peace . . . Vocation advice—Father Guyot and Father Lord . . . Queen Mary crowned by new prefect.



D. Van Hoogstrate, J. Lubeley, M. Nickolaus, I. Dow, M. Hayes, R. Naef, M. Gillespie.



J. Zerwekh, L. Peck, M. L. Rogers, M. J. Reid.



E. Willett, M. R. Jolly.



M. Morheuser, Association President.

Student Government

President.....Marilyn Morheuser
 Vice-President.....Anne Harmon Chase
 Secretary.....Margaret Letzig
 Treasurer.....Bette Jane Wolff



Board Meeting.

Senior Class President.....Peggy O'Neill
 Senior Class Representative.....Peggy Lowey

Junior Class President.....Peggy Jostedt
 Junior Class Representative.....Betty Cooper

Sodality Prefect.....Bette Macken
 Hall President.....Joan Harrigan

Sophomore Class President.. Virginia Williams
 Sophomore Class Representative.....
Elaine Krueger

Freshmen Class President.....Jean Moll
 Freshman Class Representative....Jane Payne

ment

Association

Training in democracy . . . Moe capably directing Association activities from September to June . . . Freshman "Get Acquainted" Week . . . Hey Day . . . Initiation . . . Big Sis-Little Sis . . . Denver trip—Loretto Intercollegiate Conference . . . Journey to Loretto, Kentucky . . . Christmas Banquet . . . Senior pins . . . Budgeting of our maximums and minimums . . . Week-end project—the Veiled Prophet's visit to Webster—carnival, formal and musicale . . . Freshmen govern Association . . . THIS IS WEBSTER, new campus guide and "What is Webster Month" crystallizing our ideas of our school . . . June Banquet . . . Farewell . . . A year busy and beneficial . . . Invaluable . . . Giving us opportunity in leadership, initiative, responsibility, and cooperation . . . Webster's spirit and life, the best asset for any girl.



Student Government Board.



Student Government Association.

Williams
Krueger
Moll
Payne

The Web



M. J. Reid, R. M. Reid, M. Riffel, A. Gabriel, M. Hoogstraet, A. Grosdidier, E. Feeney.



R. M. Reid, B. Macken, J. Lubeley, G. Maguire, J. Payne, P. Manion, A. Ottersbach, J. Blottman, P. Welsh, P. Nolan, L. Murphy, R. M. Saner, M. Nickolaus, M. Mills, P. Jostedt, M. Riffel, R. Hennenfent, J. Fitzsimmons, P. Hoffman and P. Powers.

Co-Editors.....Joan Lubeley
 Pat Manion
 Assistant Editor.....Alice Grosdidier
 Associate Editors.....Aurelia Ottersbach
 Bette Macken

Feature Editors.....Mary Riffel
 Rose Mary Reid
 Mary Jane Reid
 Business Manager.....Clarita Hennenfent
 Circulation Managers.....Jane Fitzsimmons
 Margaret Mills

Junior-Senior, Big Sister-Little Sister editors . . . Guest articles by faculty members . . . Last minute search for news . . . Deadlines set and met . . . "Meet Me in St. Louis"—tells where to go and when . . . The "Patters"—Walter Winchells of Webster . . . Nothing sacred when personable personages are "Caught in the Web" . . . Loretto doll—coveted prize . . . Easter issue—workshop for Journalism I class.

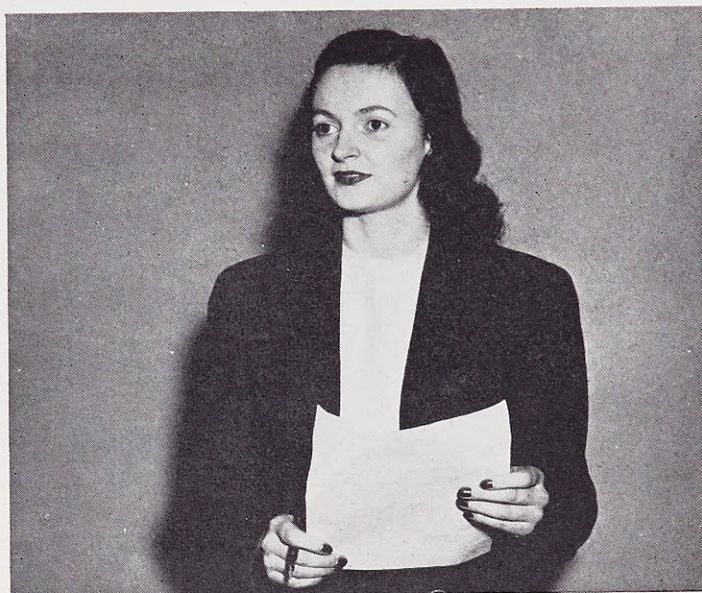


J. Lubeley and P. Manion.

Sociology Club

President.....Jane Fitzsimmons
 Secretary.....Jane Clark
 Treasurer.....Lorraine Kester
 Sergeant-at-Arms.....Catherine Bradley

Jane, president of the Inter-Collegiate Sociology Association . . . Marcella editing the I.S.A. newspaper . . . Sharing ideas . . . Our own club—guest speaker on labor . . . Interest in Chinese first communicants . . . Field trips.



Jane Fitzsimmons.



First row: H. Gregowicz, J. O'Neill, J. Fitzsimmons, J. Clark, K. Wheeler. Second row: M. R. Jolley, V. Williams, R. A. Veinhage, M. C. Weaver, I. Zeis, J. Harrigan. Third row: P. O'Neill, A. Gettelfinger, A. M. Alsobrook, A. Grosdidier, J. Mazzoni, M. E. Letzig.

Athletic



M. Fillo, M. Porbeck, R. Konrad, B. J. Smith, S. Conlon, P. Goff, T. Wand, captain B. Cooper, K. Daly, D. Gaines, M. Killoran, P. Tyler, J. Blottman, K. Gust, coach.

J. Payne, M. Morheuser, V. Rosenthal, J. Frerker.



- President.....Terry Wand
- Vice-President.....Betty Cooper
- Secretary.....Dot Gaines
- Treasurer.....Peggy Goff

As
Sund
precedi
horse b
Gust gu
Team b
ing . .
there's
Pep rad
Maryvil
. . . Jan
cheers
Officers
Awards
manshi

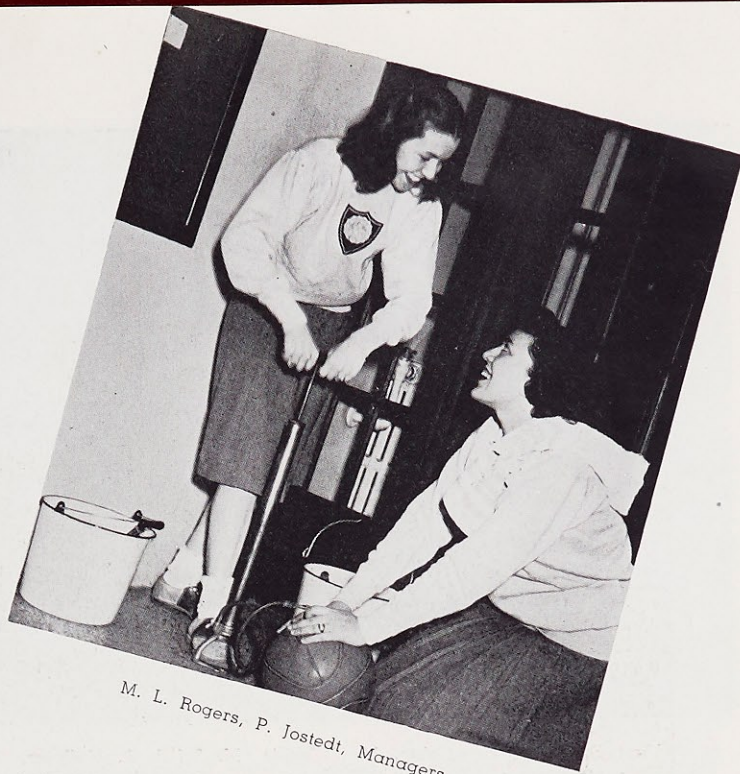


T. Wand,

letic

Association

Sunday skating sessions . . . Playful ping-pong preceding ping-pong tourney . . . Classes in horse back riding . . . Horse shows . . . Miss Gust guiding, Terry captaining our Varsity . . . Team backed by W. C. rooters' spirited cheering . . . "We're from Webster College and there's no one any prouder" . . . Bon-fire . . . Pep rallies . . . Harris . . . Fontbonne . . . Maryville . . . Lindenwood . . . Alumnae games . . . Jane, Ginny, Jean, and Moe charming our cheers . . . Roge and Jos, Managers, Inc. . . . Officers organizing play days . . . Athletic Awards at Banquet . . . All spell fun and sportsmanship in the WAA.



M. L. Rogers, P. Jostedt, Managers.



T. Wand, President; P. Goff, Treasurer; B. Cooper, Vice-President; D. Gaines, Secretary.



R. Saner, P. Rousseau, M. C. Jefferson, C. Means, R. Vienhage, E. Willett, G. Bernard.



Seated on floor: M. Hetznecker, M. Gillespie, M. Riffel, P. Hoffman, M. Glaser. Seated: P. Jostedt, P. Manion, P. Jones, B. Convy, A. Ottersbach, M. Hoogstraet, J. Serafini, M. Harrison.



First row: M. Gillespie, J. Lubeley, M. C. McDonough, P. Manion, Sister Mary Louise, M. Riffel, M. Roberts, M. C. Sheahan, M. K. Wombacher, M. Nickolaus. Second row: B. Lauderdale, A. Dintleman, R. M. Reid, M. Hoogstraet, Sister Jean Carmel, D. Van Hoogstrate. Third row: P. Hoffman, M. Mills, B. Convy.

Poetry Club

President.....Betty Convy
 Vice-President.....Peggy Jones, '45
 Secretary-Treasurer.....Pat Manion
 Archivist.....Jane O'Hara

Muses in our midst . . . New members voted in . . . Doctor Kane guest speaking . . . Poetry discussion and members' original verse at meetings . . . April picnic with poetry and pickles.



First row: P. Gibbons, A. Skidmore, K. Lambrechts, J. Higgins, V. Rosenthal, J. Breville. Second row: P. Holliger, M. Carroll, J. Signaigo, B. L. Taylor, B. Lindsey, M. Lindsey, M. C. McDonough. Third row: A. M. Alsobrook, D. Schulte, V. Stack, J. Mazzoni, D. Fay. Fourth row: R. Schmuck, C. Pombert, L. Hillner, E. Krueger, M. L. Schatzman, V. Westermayer, G. Ballinger, B. Macken, B. Koster, M. Mills, D. Bahn.

English Club

President.....Marie Gillespie
 Vice-President.....Margaret Nickolaus
 Secretary.....Joan Lubeley

Books compared with their movie adaptations . . . Techniques discussed . . . Cardinal Newman studied.

Dramatics Club

President.....Kathie Lambrechts
 Vice-President.....Jeanne Higgins
 Secretary-Treasurer.... Ann Skidmore

First nighters at the American and Rooftop . . . Tracing theater history from Thespis to Katherine Cornell . . . College night at the Little Theater an innovation.



First row: B. Luechtefeld, D. Bahn, P. Holliger, Y. De Leo, L. Ludwig, M. O'Brien, B. L. Taylor, V. Stack. Second row: M. C. Sheahan, P. Powers, M. L. Alexander, M. L. Jameson, M. Hoogstraet, R. M. Reid, M. J. Reid, M. Gebhart, C. Means, M. K. Wombacher, A. Roemer, A. M. Alsobrook, A. Schmidt. Third row: T. Epperson, P. Rousseau, D. Curtin, J. Krebs, G. Maguire, R. Dunn, D. Schulte, J. Grennan, R. M. Saner.

First row: A. Almstedt, R. Couch, B. Wiegrefe, F. Egan, M. Ramos, R. Belfiglio, M. C. Kirchmer, P. Filstead. Second row: J. Horn, G. Giles, J. Portela, R. Arango, V. Rosenthal, G. Alvaro, A. Sardinias, A. Rozier. Third row: J. Chauvin, E. Quick, J. Fitzgerald, M. Killoran, A. Dintlemann, C. Urribe, L. Miera. Fourth row: G. Ballinger, E. Doorack, I. Ceriotti, J. Signaigo, D. Fay, C. Pena. Fifth row: A. Chase, M. Carroll, M. Lindsey, B. Lindsey, R. Hughes, A. Gonzales, Miss Doyle.



First r
P. Wa
Cleim
Fourth

French Club

President.....Margie O'Brien
Secretary-Treasurer.....Lorraine Ludwig

Review of life at Laval . . . Movies of Websterites in Canada . . . Dr. Donovan guest speaker . . . Social meeting at end of year.

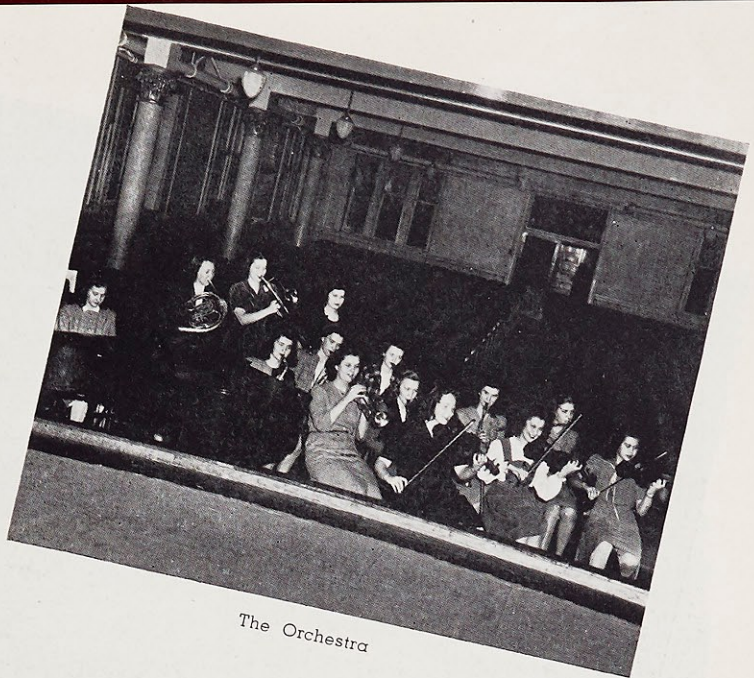
Spanish Club

President.....Jacque Chauvin
Vice-President.....Maria Ramos
Secretary-Treasurer.....Frances Egan

Our Lady of Guadalupe . . . Patroness of these senioritas . . . Movies on Ecuador and Peru . . . Exhibit of Guatemalan textiles . . . Tea for club members.

Orchestra

- Mary Elizabeth Alexander
- Victoria Harvey
- Rosemary Missel
- Jean Morgan
- Ann Gettlefinger
- Virginia Mueller
- Margaret Kienstra
- Marilyn Hayes
- Florence Westphale
- Jean Blottman
- Catherine Murphy
- Betty Kappel
- Veronica Westermayer
- Dorothy Laudicini



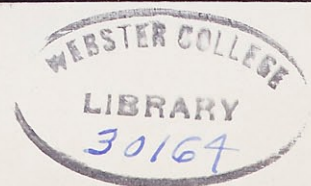
The Orchestra

ORCHESTRA AND CHORAL CLUB

Music-filled college this year . . . Orchestral strains and vocal chords . . . Assembly processional and recessional by the orchestra. Appearance at Shakespeare and "Harriet." Guiding hands of Sister Paula and Sister Joecile . . . Caroling at hotels and over radio.

GLEE CLUB

First row: P. Holliger, P. Deiss, M. Wesley, N. Moses, Y. DeLeo, M. Hayes, P. Hoffman, M. McMahon, K. Miller, R. Missel, M. Jefferson, P. Waller. Second row: I. Demko, M. E. Alexander, P. Mason, P. Rousseau, V. Williams, D. Laudicini. Third row: J. Sullivan, M. A. Cleiman, L. McGregor, M. Glaser, E. Feeney, R. Naef, D. LeFevre, E. Roth, T. Epperson, M. H. Hutton, M. C. Kirchmer, G. Maguire. Fourth row: J. Sheridan, A. Stull, A. Kopf, J. Serafini, M. S. Norris, A. Reinheimer, M. Reinheimer, J. Kraus, M. Gebhart, M. LaGarde.





J. Higgins, M. Riffel, V. Rosenthal,
D. VanHoogstrate, J. Breville, M. C.
McDonough.

M. C. Jefferson, R. Riley, A. Stull,
P. Welsh, C. Jostedt, M. L. Jameson.

Loretto Foundation Committee

Plugging the Open Forums . . . Literary Musicals of Father Lord . . . Staging assembly stunts . . . Clever publicity . . . Loretto's their second name.

Photographers

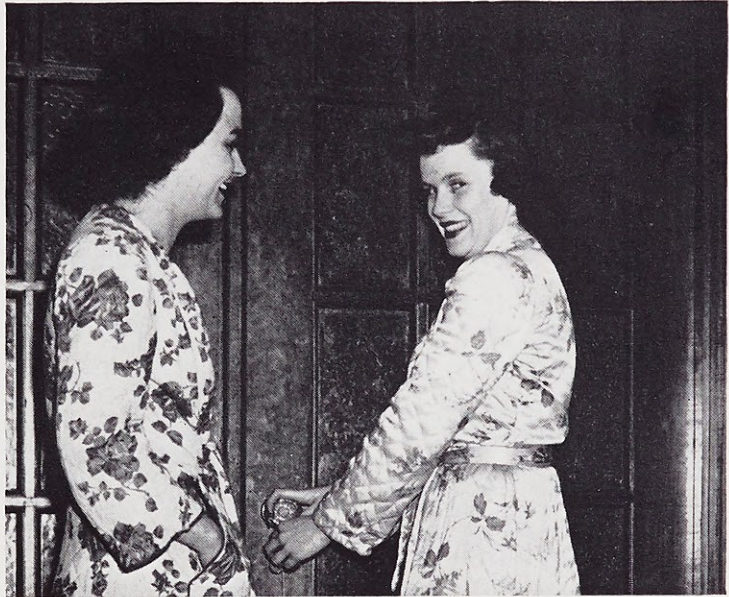
Photographed photogenic Websterites and activities for Web. Lab work in developing and printing own pictures.

Red Room Committee

Planned Red Room redecoration . . . Chose Webster's weekly Juke Box hit parade . . . Actively cooperative with the House Committee in "partying."

House Committee

Responsibility with a capital R . . . Parties with Halloween hauntings, Christmas tinsel, and Valentine hearts . . . New Committees: social, religious, style . . . Sigmund Romberg, Ice Capades, Civic Music League . . . Adoration on First Sunday . . . Social Dinners . . . Boarders' party . . . Scheduled to keep resident students' lives full and happy.



T. Wand, J. Harrigan, Hall President.



HOUSE COMMITTEE
C. Musso, J. Harrigan, V. Stack, P. Welsh, B. Convy.



RED ROOM COMMITTEE
E. Meier, M. Mills, V. Deutchman, M. Hetznecker, J. Grennan.



Musical 1945

W. C. did it again. Professional production . . . Marg and Pat and prayers to Our Lady of the Magnificat. "Maidens in Search of a Song." Mary's response, "There is a College Called Webster" . . . Familiar odor of grease

paint after four performances . . . The unforgettable numbers . . . Living rosary . . . Haunting slave girl dance . . . Everyone took part and everyone will always take a part of "In Search of a Song" with her in her heart.

Love
Willard
Our br
Walde
Doroth
Morgan
Ruth M
were s
crown
held b
Eleano
man S



May Day

Love and beauty personified in Queen Jean Willard reigned at 1945's sunny May Day. Our breath was caught by retiring queen Lucille Walde, the maids, Margaret Mary Haring, Dorothy Riffel, Betty Marie Schweitzer, Jean Morgan, Margaret Nickolaus, Trudy Bernard, Ruth Mount and Louise Berney. Our hearts were stolen by flower girl Patsy Willard and crown bearer Don Dreher. Our glance was held by the seniors of the daisy chain, page Eleanor Quick, the handsome escorts, the Freshman Soloists and the May Pole dancers.



Jean Willard, May Queen, John McGonigle, Escort.



May Court.



Bingo.

Project

Project week-end . . . Not a minute to waste . . . All Webster working . . . Friday night frolicking in "Idle Hour" . . . Booth building for theme thrilling appearance . . . Clowns . . . Balloons . . . Taffy pulling . . . Russian raffle . . . Margie O'Brien's super-salesmanship . . . Donations' chanted pleas . . . Chances and more chances . . . Booths of Seasons, Toyland, Comics, Arabian Nights, Castle of Adventure and Romance, Sports from Veiled Prophet's Past . . . "Shure and 'twas a great day," Our Campus Carnival Capers.

Jean and Jeanette, co-chairmen of our



Gold and White Formal.

1946

Gold and White formal . . . Reception line . . . Bids and programs . . . Flowers and Formals . . . Dreams of dancing, fun, talk and laughter . . . Symphony in Stardust. "His Majesty's Memories" . . . Kathie's direction . . . "Veiled Prophet" -ess Jeanne Higgins . . . Lights and action . . . Definitely different dance routines . . . Smooth music by W. C. musicians . . . Seashore . . . Ball game . . . Levee . . . Birthday party . . . Our Lady's coronation by Queen Mary Ann Planthold . . . Father Lord's finishing touches . . . The Auditorium filled and overflowing . . . The songs still linger.



Castle of Romance.



By the Sea.

A Day



Mass begins any Websterite's day . . . Beds are made . . . Dash when breakfast bell rings . . . Classes in chem, philosophy, soc, English, or history . . . Library study . . . Red Room relaxation . . . Colonnade conversation . . . Reading mail . . . Lunch at 12:20 . . . Assembly



Day

At Webster

. . . Beds
bell rings
English,
Red Room
tion . . .
Assembly

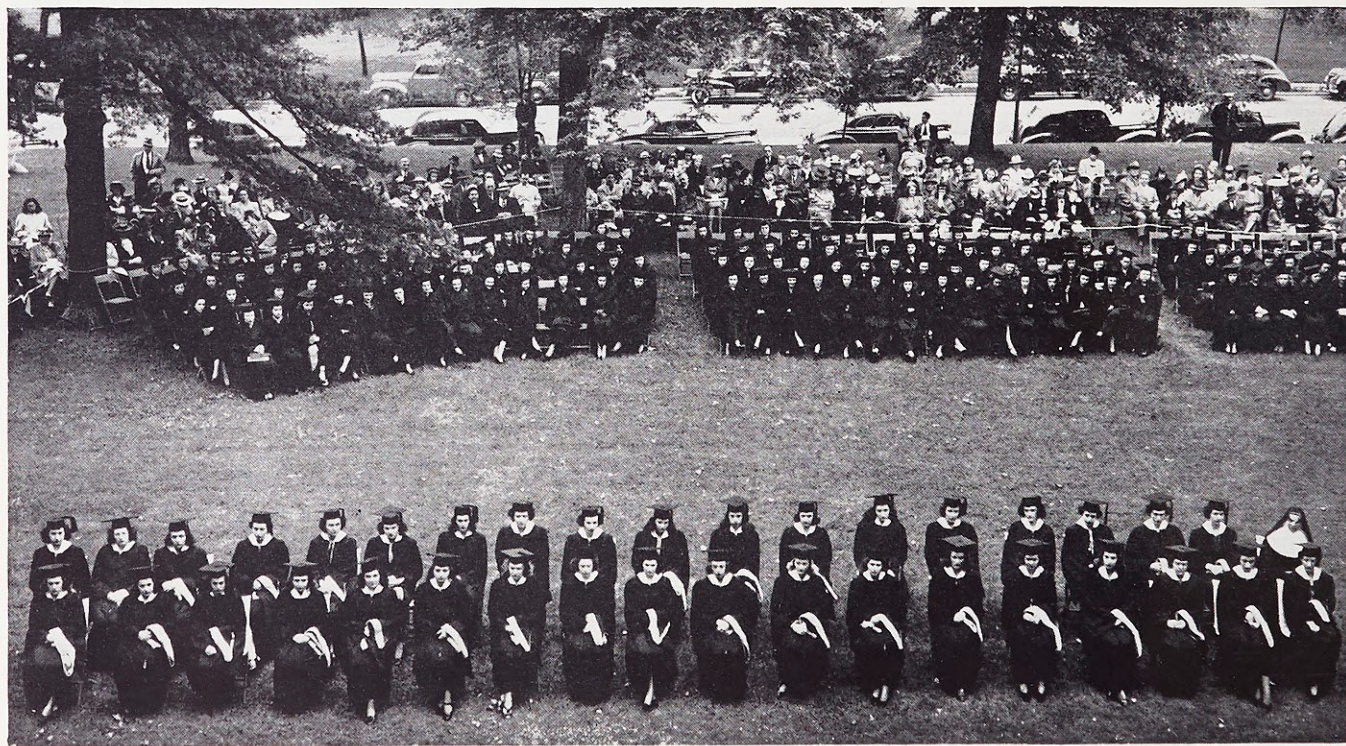
. . . Studying for class or cramming for test . . .
Gym class . . . Music practice . . . Play re-
hearsals . . . Lab . . . Faculty chats . . . Club
meetings . . . Day-Hops leave to board the
Manchester . . . A busy day of work, fun,
and friendship at Webster.

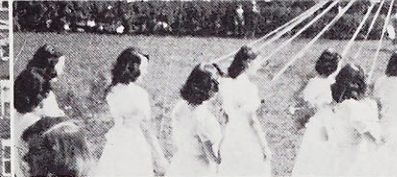
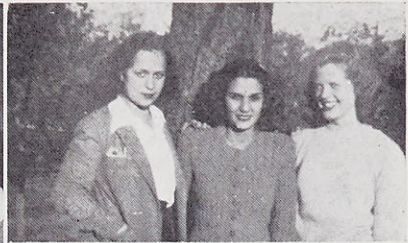




Graduation

Processional from Loretto Hall . . . Underclassmen . . . Graduates . . . Alumnae . . . Faculty . . . Honored guests . . . Address by a noted speaker . . . Seniors presented by Dr. Donovan . . . The platform mounted . . . Conferring of diploma and hood—reward for four years of work . . . Four long years you thought—four short years they were. Benediction outdoors . . . "Holy God"—in thanksgiving for all things Webster.





Who's Who
Luck of the Irish

Loretto girls
Welcome addition

Canadian cuties

Heightsonians

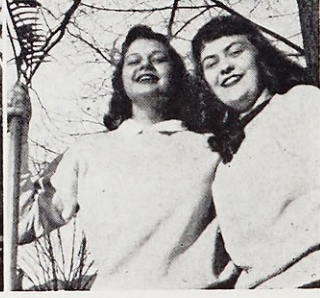
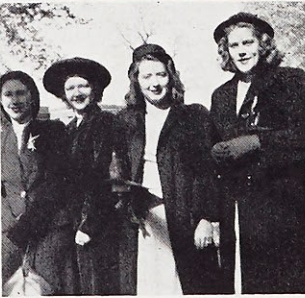
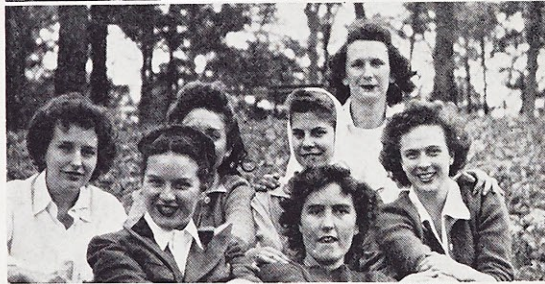
Mrs. B.
Chain gang

Las amigas

Nun other

Up with Manley

The north wind doth blow
Just like home



Here they come a' caroling

Smiles of beauties

Quite a quintet

A real "tree"-t

Take your pick-nick

Frosh foursome

Chris & Mel

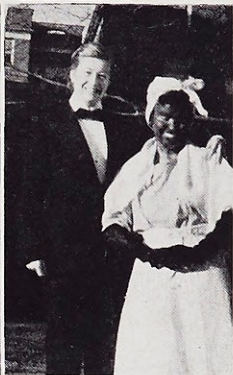
Oops-a-daisy

Maid to order

Mattoon town

Snow fun

Leaf it to them



Signed up Academically garbed Canadian canter Dixie
 Sunday in the park Laugh, clown, laugh Home was never like this
 Juniors busting out all over Oh what it seems to be To summit up
 Back to the hoosgow Study in sunlight Step sisters

Formal Photographs
Edwyn Portraits

Informal Photographs
Glenn Ogle
Jack Zehrt
Sister M. Germaine, S.L.

Engraving
Central Engraving Company

Binding
The Becktold Company

Printing
A. R. Fleming Printing Company