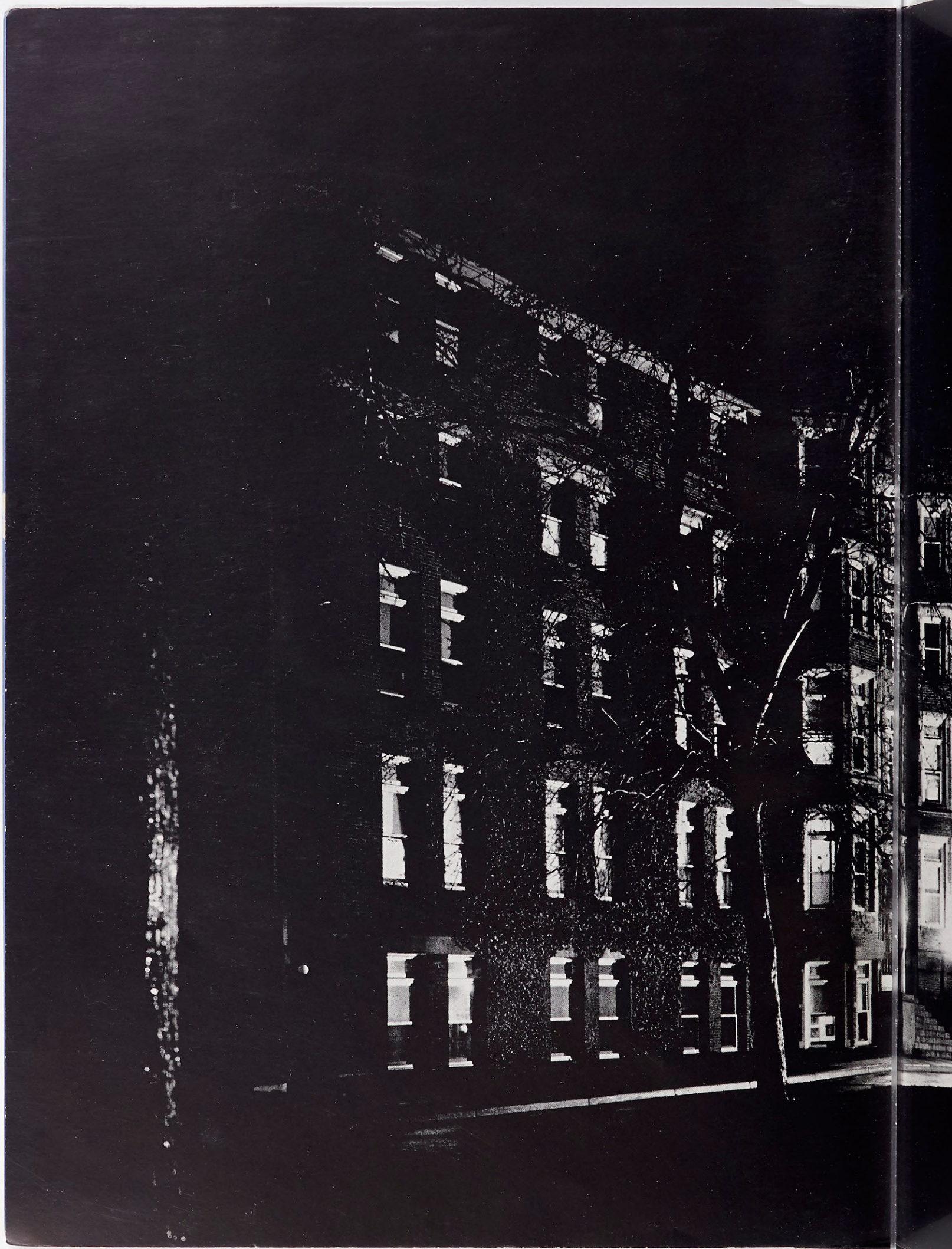


*Lauretanum*

1943







*The Lauretanum*

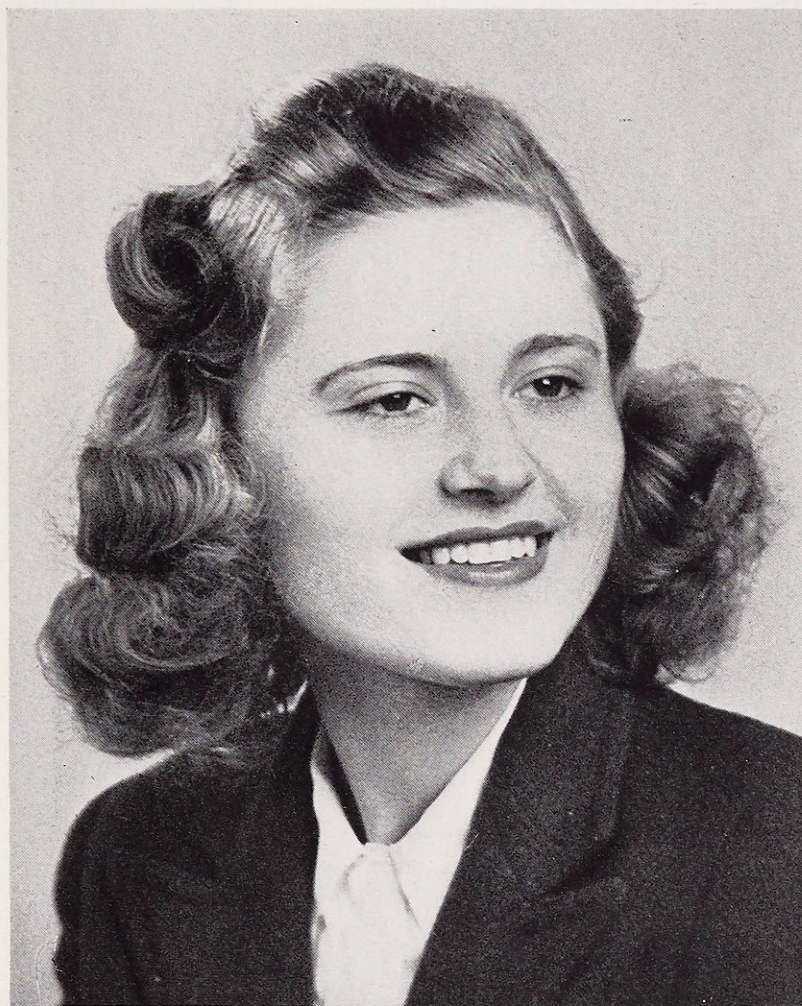
1943

WEBSTER UNIVERSITY ARCHIVES

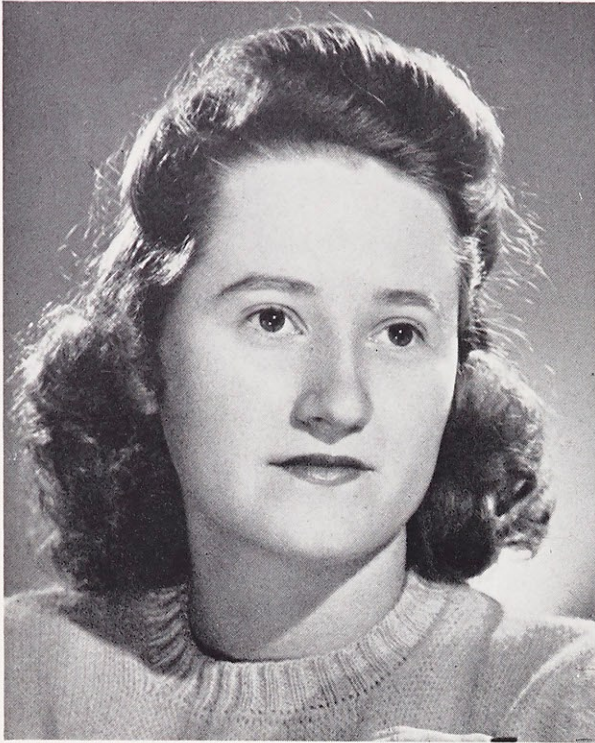


To Mary, Queen of Peace, we dedicate the 1943 Lauretanum in the hope that she will bring everlasting tranquillity to this troubled world, and keep our boys safe in mind and body. Bring them safely home. We place in your hands, dear Mary, all our faith, our fears for the future with the satisfaction that you and your Son will again bring peace and happiness to all mankind.

*In Memoriam*



RUTH SMUGAI



## *Betty Jeanne Pratte*

FESTUS, MISSOURI  
PH.B. IN ENGLISH

Student Government Association, '40, '41, '42, '43  
Athletic Association, '40, '41, '42, '43  
Sodality, '40, '41, '42, '43  
C.S.M.S., '40, '41, '42, '43  
Class Vice-President, '43  
Web Staff, '41  
Co-op Shareholder, '43  
Orchestra, '40, '41, '42  
Liturgical Choir, '43  
Vod-Vil, '40, '41  
Chemistry Club, '40  
French Club, '40, '41  
English Club, '42, '43  
Dietetics Club, '42, '43  
Drum and Bugle Corps, '40, '41  
Class Volleyball, '40, '41, '42, '43  
Class Basketball, '40, '41, '42, '43  
Class Softball, '40, '41, '42, '43



## *Rosie Mae Spaulding*

LEBANON, KENTUCKY  
A.B. IN ENGLISH

Student Government Association, '40, '41, '42, '43  
Athletic Association, '40, '41, '42, '43  
Sodality, '41, '42, '43  
C.S.M.C., '40, '41, '42, '43  
Student Government Board, '40, '41; Vice-President, '42;  
President, '42, '43  
Freshman Class President, '40  
Sophomore Class President, '41  
Class Representative to Board, '43  
Student Spiritual Council, '40, '43  
Rules and Regulation Committee, '42  
LAURETANUM, Advertising Manager, '42  
Who's Who, '42  
Spanish Club, '40  
English Club, '43

## Mary Jane Greenslade

HIGHLAND PARK, ILLINOIS

PH.B. IN HISTORY

Student Government Association, '39, '40, '42, '43  
Sodality, '39, '40, '42, '43  
Sodality Prefect, '43  
Athletic Association, '39, '40; Secretary, '40, '42; Vice-  
President, '43  
C.S.M.C., '39, '40, '42, '43  
Student Spiritual Council, '39, '40, '43  
Varsity Basketball, '39, '40, '42, '43; Captain, '43  
President Illinois Section Club, '43  
Student Government Board, '43  
Nominating Committee, '42  
Who's Who, '43  
French Club, '39, '40  
Biology, '40, '43  
Choral Club, '39, '40  
International Relations Club, '43  
Class Secretary, '42  
Class Basketball, '39, '40, '42, '43  
Class Baseball, '39, '40, '42, '43  
May Maid, '43  
Liturgical Choir, '43

## Mildred Born

RICHMOND HEIGHTS, MISSOURI

B.S. IN DIETETICS

Student Government Association, '40, '41, '42, '43  
Athletic Association, '40, '41, '42, '43  
Sodality, '40, '41, '42, '43  
C.S.M.C., '40, '41, '42, '43  
Business Manager WEB, '43  
Vod-Vil, '40, '41  
Chem-Biology Club, '40, '41, '42  
French Club, '40, '41  
Riding Club, '40, '41, '42  
Archery Club, '42





## *Betty Orr*

COTTONWOOD, IDAHO  
PH.B. IN ENGLISH

Marylhurst College, '40, '41  
Student Government Association, '42, '43  
Athletic Association, '42, '43  
Sodality, '42, '43  
C.S.M.C., '42, '43  
Social Chairman of Resident Students, '43  
Nominating Committee, '43  
Dramatics Club, '42, '43; Treasurer, '43  
English Club, '42, '43  
Co-op Shareholder, '42, '43  
Sodality Nominating Committee, '43  
Chairman of May Day, '43  
May Maid, '43  
Liturgical Choir, '43



## *Dorothy Cantalin*

WELLSVILLE, MISSOURI  
B.S. IN DIETETICS

Student Government Association, '40, '41, '42, '43  
Athletic Association, '40, '41, '42, '43  
Sodality, '40, '41, '42, '43  
C.S.M.C., '40, '41, '42, '43  
Student Spiritual Council, '41  
Assistant Editor WEB, '43  
Chemistry Award, '42  
Chem-Biology Club, '40, '41, '42, '43; President, '43  
French Club, '40, '41  
Archery Club, '42  
Dietetics Club, '42, '43; Secretary, '42

## Mary Eileen Mansfield

RICHMOND HEIGHTS, MISSOURI

PH.B. IN ENGLISH

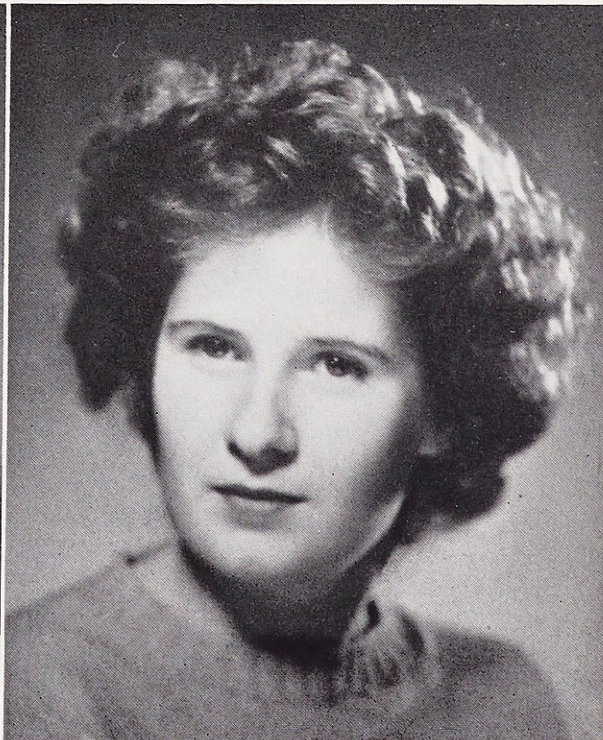
Student Government Association, '40, '41, '42, '43  
Athletic Association, '40, '41, '42, '43  
Sodality, '40, '42, '43  
C.S.M.C., '40, '41, '42, '43  
Athletic Association President, '43  
Student Government Board, '41, '42, '43; Treasurer, '42  
Who's Who, '43  
Chairman of Fall Party, '42  
LAURETANUM, Circulation Manager, '42  
May Maid, '42  
English Club, '42, '43  
French Club, '40, '41  
Liturgical Choir, '43

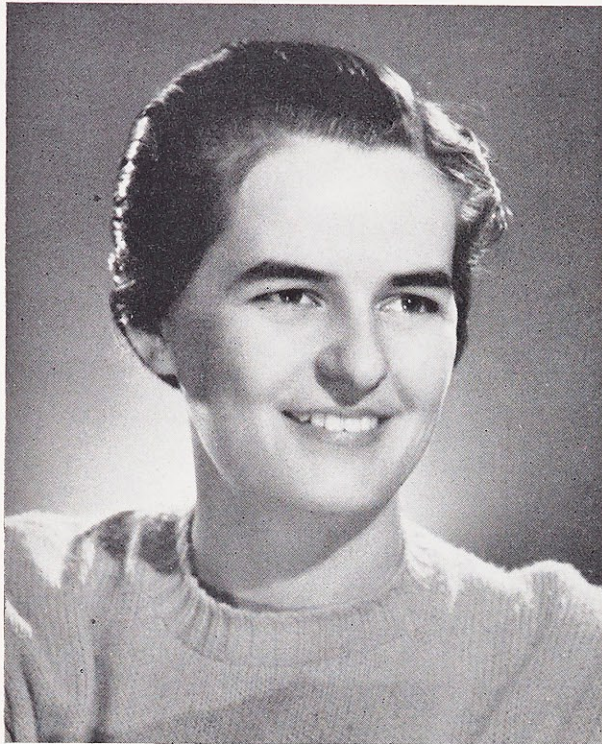
## Rosemary Nestor

ST. LOUIS, MISSOURI

A.B. IN ENGLISH

Student Government Association, '40, '41, '42, '43  
Athletic Association, '40, '41, '42, '43  
Sodality, '40, '41, '42, '43  
C.S.M.C., '40, '41, '42, '43  
WEB Staff, '42; Editor, '43  
LAURETANUM, Associate Editor, '42  
Student Spiritual Council, '42  
Student Production Committee, '43  
Vod-Vil, '40, '41  
English Club, '42; President, '43  
Dietetics Club, '43  
Le Cercle Francais, '40, '41, '42  
Loretto Players, '43  
Music Guild, '42, '43  
Chem-Biology Club, '42  
Co-op Shareholder, '42, '43  
Liturgical Choir, '43





## Mary Whelan

RAYMOND, ILLINOIS  
B.S. IN CHEMISTRY

Student Government Association, '40, '41, '42, '43  
Athletic Association, '40, '41, '42, '43  
Sodality, '40, '41, '42, '43  
C.S.M.C., '40, '41, '42, '43  
LAURETANUM, Business Manager, '42  
Varsity Manager, '42  
Chem-Biology Club, '40, '41, '42, '43  
French Club, '40



## Iris Garvey

BIRMINGHAM, ALABAMA  
P.H.B. IN ENGLISH

Student Government Association, '40, '41, '42, '43  
Athletic Association, '40, '41, '42, '43  
Sodality, '40, '41, '42, '43  
C.S.M.C., '40, '41, '42, '43  
Student Government Board, '43  
Hall President, '43  
Chairman of Rules and Regulation Committee, '43  
Student Spiritual Council, '43  
Who's Who, '43  
LAURETANUM, Assistant Editor, '42  
May Maid, '42  
Spanish Club, '40, '41, '42  
English Club, '43  
Dramatics Club, '43  
Chem-Biology Club, '40  
Liturgical Choir, '43  
Shareholder Co-op, '42, '43  
Vod-Vil, '40, '41  
Varsity Basketball, '41  
Cheer Leader, '40  
Class Basketball, '40, '41, '42, '43  
Class Volleyball, '40, '41, '42, '43

## Anita Potthest

GREENVILLE, ILLINOIS  
A.B. IN DIETETICS

Student Government Association, '40, '41, '42, '43  
Athletic Association, '40, '41, '42, '43  
Sodality, '40, '41, '42, '43  
C.S.M.C., '40, '41, '42, '43  
Class Secretary, '43  
Chem-Biology Club, '40, '41, '42  
French Club, '40, '41  
Dietetics Club, '42, '43

## Dorothy Buergler

ST. LOUIS, MISSOURI  
B.S. IN DIETETICS

Student Government Association, '40, '41, '42, '43  
Athletic Association, '40, '41, '42, '43  
Sodality, '40, '41, '42, '43  
C.S.M.C., '40, '41, '42, '43  
WEB Staff, Business Manager, '43  
LORETTINE, Business Manager, '43  
Vod-Vil, '40, '41  
Choral Club, '40, '41  
Spanish Club, '40, '41  
Chem-Biology Club, '40, '41, '42, '43  
Dietetics Club, '42, '43  
Shareholder of Co-op, '42, '43  
Liturgical Choir, '43

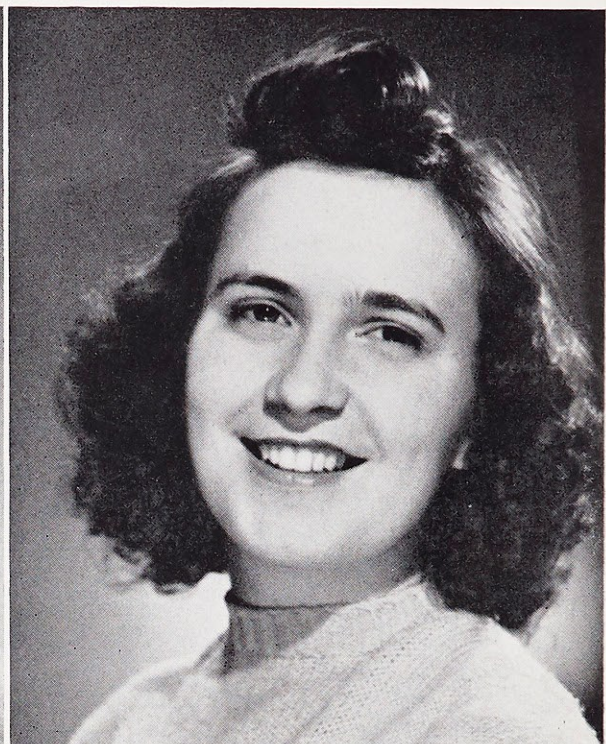




## *Helen Marie Stevenson*

SUPERIOR, NEBRASKA  
B.S. IN DIETETICS

Student Government Association, '40, '41, '42, '43  
Athletic Association, '40, '41, '42, '43  
Sodality, '40, '41, '42, '43  
C.S.M.C., '40, '41, '42, '43  
Student Government Representative, '40  
Vice-President of Loretto Hall, '43  
Dietetics Club, '42, '43; President, '43  
Liturgical Choir, '43



## *Virginia Lee Daly*

CLAYTON, MISSOURI  
B.S. IN DIETETICS

Student Government Association, '40, '41, '42, '43  
Athletic Association, '40, '41, '42, '43  
Sodality, '40, '41, '42, '43  
C.S.M.C., '40, '41, '42, '43  
May Queen, '42  
Who's Who, '43  
Class President, '42, '43  
Varsity Basketball, '43  
Class Basketball, '40, '41, '42, '43  
Dietetics Club, '42, '43; Vice-President, '42  
Spanish Club, '40, '41  
Vod-Vil, '40, '41  
Student Government Board, '43

## *Martha Jane Barnes*

DENVER, COLORADO

A.B. IN SPANISH

Student Government Association, '40, '41, '42, '43

Athletic Association, '40, '41, '42, '43

Sodality, '40, '41, '42, '43

C.S.M.C., '40, '41, '42, '43

Mission Representative, '43

WEB, Circulation Manager, '40

Vod-Vil, '40

Spanish Club, '40, '41, '42, '43

Classical Club, '42, '43

English Club, '43

## *Annetterose Callahan*

ST. LOUIS, MISSOURI

PH.B. IN ENGLISH

Le Clerc College, '40, '41

Student Government Association, '42, '43

Athletic Association, '42, '43

Sodality, '42, '43

C.S.M.C., '42, '43

Student Spiritual Council, '43

Manager of the CO-OP, '43

WEB Staff, '42, '43

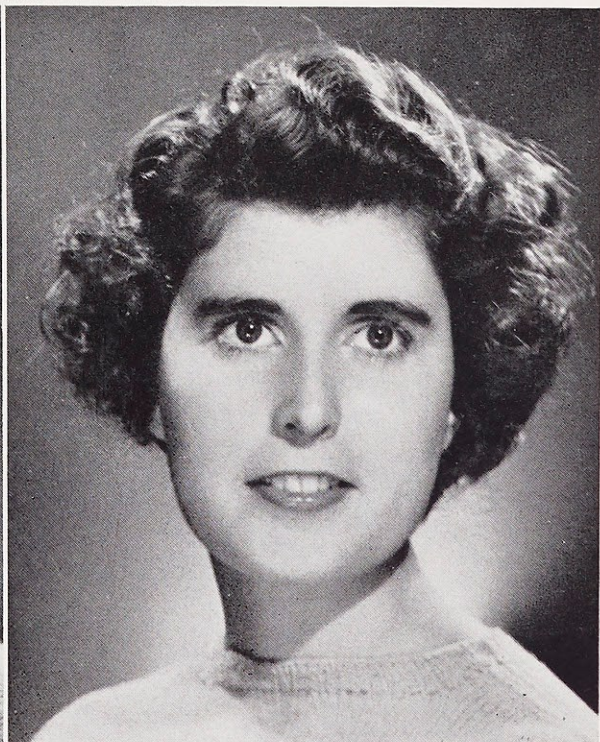
LORETTINE Editor, '43

Choral Club, '42

English Club, '42, '43; Treasurer, '43

French Club, '42, '43

Liturgical Choir, '43





## *Eloise Jarvis*

HARRISBURG, ILLINOIS

B.S. IN MUSIC

Student Government Association, '40, '41, '42, '43  
Sodality, '40, '41, '42, '43  
C.S.M.C., '40, '41, '42, '43  
Athletic Association, '40, '41, '42, '43  
Music Guild, '40, '41, '42, '43; Vice-President, '41;  
President, '42, '43  
Orchestra, '40, '41, '42, '43; Secretary, '42; President, '43  
French Club, '41  
Choral Club Accompaniment, '40, '41  
English Club, '43  
Liturgical Choir, '43  
LORETTINE, '42



## *Mary Agnes Barry*

ST. LOUIS, MISSOURI

A.B. IN DIETETICS

Student Government Association, '40, '41, '42, '43  
Athletic Association, '40, '41, '42, '43  
Sodality, '40, '41, '42, '43  
C.S.M.C., '40, '41, '42, '43  
LORETTINE, Assistant Editor, '43  
WEB Staff, '41, '42, '43  
Class Vice-President, '42  
Class Treasurer, '43  
Vod-Vil, '40, '41  
Choral Club, '40, '41  
Chem-Biology Club, '40, '41, '42, '43  
Spanish Club, '40, '41  
Dietetics Club, '42, '43  
English Club, '43  
Class Volleyball Team, '40, '41  
Co-op Board of Directors, '43  
Co-op Shareholder, '42, '43  
Liturgical Choir, '43

## *Susan Monti*

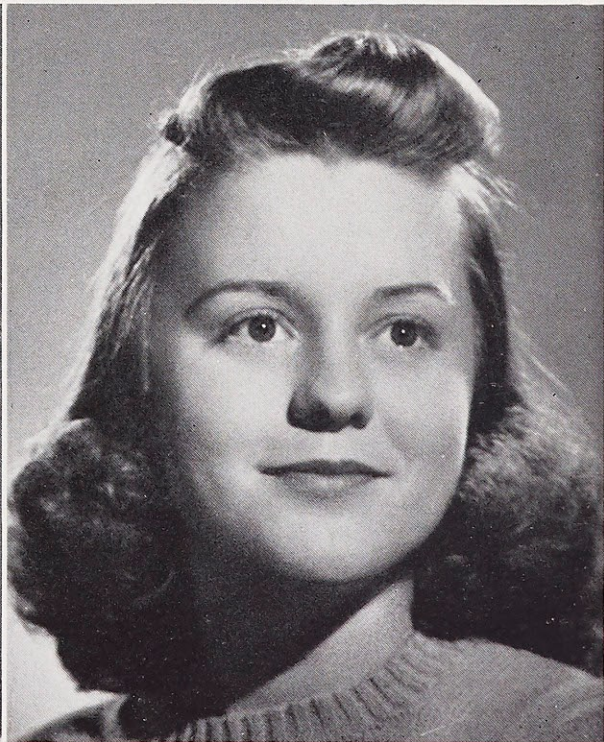
ST. LOUIS, MISSOURI  
A.B. IN SPEECH

Student Government Association, '40, '41, '42, '43; Secretary, '43  
Athletic Association, '40, '41, '42, '43  
Sodality, '40, '41, '42, '43  
C.S.M.C., '40, '41, '42, '43  
Faculty Representative, '42, '43  
LAURETANUM, Editor, '42  
LORETTINE Staff, '43  
Who's Who, '42  
WEB Staff, '41  
Eleanor Lyons Schafly Debating Award, '40  
Shakespearian Award in Acting, '42  
Class Vice-President, '40  
Nominating Committee, '40, '41  
Loretto Players, '40, '41, '42, '43; President, '43  
French Club, '40, '41

## *Mary Agnes Lingner*

MAPLEWOOD, MISSOURI  
PH.B. IN HISTORY

Student Government Association, '40, '41, '42, '43  
Athletic Association, '40, '41, '42, '43  
Sodality, '40, '41, '42, '43; Vice-Prefect, '43  
Student Spiritual Council, '43  
C.S.M.C., '40, '41, '42, '43  
CO-OP, Board of Directors, President, '43  
K. of C. Award in History, '42  
Vod-Vil, '40  
WEB Staff, '43  
Choral Club, '40, '41, '42; Vice-President, '41  
International Relations Club, '42, '43; President, '43  
French Club, '40, '41, '42, '43; Secretary-Treasurer, '42  
Class Treasurer, '42  
Liturgical Choir, '43





## *Junior Class*

### ROSTER

Margaret Ballman  
 Enid Davila  
 Etervina Figueroa  
 Viola Mae Fitzgibbons  
 Helen Hagen  
 Thomasine Hunt  
 Audrey Illig  
 Josephine Kabbes  
 Marie Kloepfel  
 Margaret Knecht  
 Louise Lovely  
 Dorothy McDonnell  
 Mary Catherine Morgan  
 Mary Mudd  
 Renee Perez  
 Dolores Quinlan  
 Marian Riehemann  
 Marline Ruemping  
 Rosemary Schneiderhahn  
 Betty Spengel  
 Ellanora Valle  
 Nancy Volm  
 Ann Young

*Talking it over.*  
*A race with the bell.*  
*Trimming the tree.*

*First Row:* L. Lovely, M. Robinson, T. Hunt, H. Hagen. *Second Row:* A. Young, V. M. Fitzgibbons, E. Davila, M. Mudd. *Back Row:* E. Valle, B. Spengel, R. Schneiderhahn, D. McDonnell.



*First Row:* M. Ballman, M. Ruemping, E. Figueroa, M. Knecht, M. Kloeppel. *Back Row:* M. C. Morgan, R. Perez, J. Kabbes, N. Volm, D. Quinlan.



## Sophomore Class

### ROSTER

Joyce Agapeau  
 Mary Pat Almstedt  
 Marcelle Barbazon  
 Judy Biller  
 Ingeborg D'Alquen  
 Jeanne Dolan  
 Erna Didden  
 Valerie Douglas  
 Audrey Effinger  
 Peggy Fay  
 Catherine Fleming  
 Mary Ferris  
 Patricia Flynn  
 Margaret Haring  
 Peggy Hartmann  
 Eileen Hastey  
 Mary Ann Healy  
 Mary Ann Henckler  
 Clare Hoffmeister  
 Sylvia Horning  
 Mary Grace Kane  
 Pat Kenoyer  
 Kathleen Kienstra  
 Virginia Knese  
 Carmen Melendez  
 Georgette Mercier  
 Marguerite Milford  
 Rosemary McKinney  
 Helen Muser  
 Evelyn O'Sullivan  
 Ruth Ottens  
 Joan Oulvey  
 Marion Quigg  
 Shirley Paden  
 Dorothy Roeth  
 Leslie Sandoe  
 Betty Schweitzer  
 Peggy Versen  
 Marie Vlatkovitch  
 Lucille Walde  
 Bette Walsh  
 Ann Rita Willard

*No trump.*

*Bags and baggage.*

*Facts and figures.*

*First Row:* C. Hoffmeister, M. Haring, M. A. Henckler, M. P. Almstedt. *Second Row:* D. Roeth, M. Milford, P. Flynn, C. Fleming, M. G. Kane. *Third Row:* E. Hastey, B. Walsh, M. Vlatkovitch, A. Effinger, I. D'Alquen. *Back Row:* P. Fay, L. Walde, J. Dolan, E. Didden, S. Horning, B. Schweitzer, L. Sandoe.



*First Row:* P. Hartmann, H. Muser, M. Ferris, G. Mercier, E. O'Sullivan. *Second Row:* M. Kosta, V. Knese, C. Melendez, A. R. Willard, R. McKinney, S. Paden. *Third Row:* K. Kienstra, V. Douglas, J. Agepeau, M. A. Healy, J. Biller, P. Versen. *Back Row:* J. Oulvey, R. Ottens.

## *Freshman Class*

### ROSTER

Anna Marie Alsobrook  
Kathleen Brownfield  
Marie Clancy  
Patricia Collins  
Madeleine Costa  
Vera Deutschmann  
Marie Donnelly  
Gerry Dowd  
Virginia Elschinger  
Doris Federer  
Mary Fitzgerald  
Jane Fitzsimmons  
Kathleen Froeschl  
Marie Gillespie  
Mary Louise Hoch  
Rosemary Koestler  
Marcella Kommer  
Bernice Koster  
Shirley Lampman  
Katherine Lambrechts  
Barbara Laney  
Doris Mae Leber  
Margaret Letzig  
Margaret Mary Lowey  
Betty Macken  
Jean McCrary  
Luetta Meiners



*Scrubs serve.*

*Adolescents at work.*

*Gossip session.*

*First Row:* M. Donnelly, K. Wheeler, K. Froeschel, C. Musso, M. Letzig. *Second Row:* J. Leubely, D. M. Leber, M. Morheuser, D. Sympson. *Third Row:* M. Komer, P. O'Neill, R. Williamson, M. Lowey. *Back Row:* M. Koster, B. Schmid.



*First Row:* V. Elschinger, V. Deutschmann, M. O'Brien, D. Van Hoogstrate. *Second Row:* P. Collins, K. Lambrechts, K. Reppen, B. Macken, L. Meiners. *Back Row:* J. Odell, S. Nies, N. Ries, A. Skidmore, B. Taylor, C. Mitchell.



## *Freshman Class*

### ROSTER

Catherine Mitchell  
 Dorothy Mitchell  
 Jean Morgan  
 Jeanette Morgan  
 Marilyn Morheuser  
 Christine Musso  
 Margaret Nicholaus  
 Shirley Nies  
 Jeanne Odell  
 Margie O'Brien  
 Peggy O'Neill  
 Marianne Planthold  
 Flor Ramirez  
 Doris Rehg  
 Nancy Ries  
 Mary Catherine Reppen  
 Betty Schmid  
 Ann Skidmore  
 Dorothy Sympson  
 Bettie Ann Taylor  
 Kay Wheeler  
 Dorothy Van Hoogstrate  
 Terry Wand  
 Helen Walsh  
 Jean Willard  
 Robin Williamson  
 June Zerwekh  
 Irene Zeis

*Full-fledged fresbies.  
 Noon in the Pink Room.  
 Conflict.*



*First Row:* M. C. Fitzgerald, D. Mitchell, M. Nicholas, K. Bromfield. *Second Row:* J. Zerwich, I. Zeis, M. A. Planthold, D. Federer, J. Morgan, J. Dowd. *Third Row:* M. Gillespie, R. Koestler, D. Reh, M. Clancy, J. Morgan.





## Web

ROSEMARY NESTOR - - - - - Editor  
 DOROTHY CANTALIN - - - Assistant Editor  
 MARIE KLOEPPEL } - - - - Associate Editors  
 MARY MUDD }

Lights burning late in press room . . .  
 Rosemary madly pleads for overdue copy  
 . . . typists wishing for new ribbon . . .  
 or new typewriter . . . students gener-  
 ously writing features . . . "Caught in the  
 Web" intellectual life . . . intimate revela-  
 tions made in "Echoes of the Halls"  
 . . . ideas on latest Broadway plays given  
 in "Playgoers Perspective" . . . Sodality  
 "Mary-Go-Round" . . . student opinion  
 expressed in editorials . . . gobs of pic-  
 tures . . . latest scoops . . . who will  
 write some headlines? . . . special treats  
 in poetry . . . where can we get that cut  
 made? . . . latest war bond quiz . . . an  
 extra worry with enlarged issues at  
 Christmas and Graduation . . . more gray  
 hairs . . . but everyone loves it.

*Rollicking reporters.  
 Smile pretty.  
 Why so happy?  
 Snowed under with work.*

## Loretine

ANNETEROSE CALLAHAN - - - - - Editor  
 MARY AGNES BARRY - - - - Assistant Editor  
 HELEN HAGEN } - - Associate Editors  
 MARGARET ROBINSON }

A mad rush four times a year . . . the *Loretine's* coming out again . . . Student literary quarterly . . . short stories, essays, poetry . . . student writers . . . guest contributors . . . Dr. Frank Sullivan of St. Louis U. . . . Irish editor . . . and frantic . . . late copy . . . 1500-word articles . . . staff rushing madly . . . first issue of every year by the alumnae . . . the regulars: . . . Ann Young's "Just Among Ourselves," . . . Book Notes" by Susan Monti . . . "Nerinx Hall Notes" by Peggianne Johnston . . . Mary Mudd's "Near and Far" the doings of the alumnae . . . "Cadences" by the music department . . . "Exchanges" reviewed by Betty Spengel . . . encouragement for budding literary geni . . . that's the *Loretine*.



Pause that refreshes.  
 Discussing copy.  
 Buying energy.  
 Five girls on a rail.



## Personal Holiness

MARY JANE GREENSLADE - - - - Prefect  
 MARY AGNES LINGNER - - - Vice Prefect  
 ELLEANORA VALLE - - - - - Secretary  
 ROSEMARY SCHNEIDERHAHN - Treasurer

Janie sending us Sodality reminder cards this summer . . . Candy surprise at our first meeting . . . Spiritual Council Meetings every Friday . . . Adoption of Chant for year . . . Practices . . . Singing Mass December eighth . . . fixing baskets for poor at Christmas . . . Victory Rosary for our boys . . . Mass on First Friday . . . Holy Hour every month . . . Establishment of Liturgical Choir . . . Every student attending daily Mass during Lent with intention for peace . . . Quarterly meetings of St. Louis Sodality Union . . . Informal parties at St. Louis University . . . Mary Catherine Morgan elected Vice-Prefect of Union . . . May Day . . . Crowning of Blessed Mother in Chapel . . . Rosemary Schneiderhahn elected as Prefect of incoming year.

*Efficient effectiveness.  
 Sodality smile.  
 Inspiration.  
 Sharing with others.*

## *Spirit of Sacrifice*

Spirit of prayer and sacrifice . . . ideas presented at weekly board meetings . . . plans given to student missionaries . . . new board prayer projects each week . . . untiring efforts of Sister Coltaire . . . stamp collections . . . missals sent to Father Glennon . . . mission posters give stimulus . . . stamp and clothing drives held . . . lapel "jitterbugs" sold . . . Lent sacrifices boxes distributed throughout school . . . special mission program given at assembly . . . Msgr. M. K. Carroll receives \$150 from students . . . Contributions made to missionary organizations . . . gives aid to Christmas party for orphans at St. Ann's . . . special missionaries speak of work in foreign countries . . . selling of religious Christmas cards . . . true spirit of prayer and sacrifice lived and encouraged.



*Pamphlets for sale.  
New slant for the Missions.  
Clothes for the poor.*



## *Na + Cl → NaCl*

Speaking of labs . . . yes, indeed . . . with new and interesting achievements in science . . . from morning to night . . . Projects for all . . . mounting dogs . . . growing herbs . . . raising white mice . . . test tubes . . . centrifuges . . . weights and measures . . . not forgotten for long.

## *Mes Beaux Amies*

Bonjour mes amies . . . prayers in French . . . salute to the flag . . . Claudel . . . *La Voix* . . . L'Espagnol cooperates with Le Francais . . . talk by Doctor Donovan on political situation in France . . . war stamps for endowment fund . . . au revoir.

## *Keeping Fit*

Intermural activities . . . volleyball . . . ping-pong . . . badminton . . . bowling . . . posture contest . . . exciting basketball games . . . unprecedented victory over alumnae . . . high school and college play days . . . annual banquet and awards climax year's activities.

President, D. Cantalin; Secretary-Treasurer, E. Figeroua.  
 President, N. Volm; Secretary-Treasurer, M. Robinson.  
 President, M. E. Mansfield; Vice-President, M. J. Greenslade; Secretary, B. Schweitzer;  
 Treasurer, R. Ottens.

## Grammatically Speaking

Informal meetings in Pink Room . . . Book Reviews by Members . . . Discussion of current hits on Broadway . . . Talks on the Little Theatre . . . American Theatre news . . . Renewed Appreciation of Classics.



## Ruling Ourselves

Governing board of Student Government Assoc. . . . members elected by students, faculty . . . six Seniors . . . four Juniors . . . two Sophomores . . . Freshmen . . . weekly meetings . . . long and heated discussions . . . supervision of college routine and social activities.



## Calories Included

Entertainments . . . Lectures . . . parties acquainting future students with Dietetics Department . . . publication of "Calorie Counter" . . . Dinners for our parents . . . Field trips to Chase and Park Plaza . . . Two social, two business meetings a year . . . Ever watching guidance of our Miss Killian.



*President, R. Nestor; Vice-President, H. Hagen; Secretary, V. M. Fitzgibbons; Treasurer, A. Callahan.*

*President, R. M. Spaulding; Vice-President, M. Knecht; Secretary, S. Monti; Treasurer, M. Robinson.*

*President, H. M. Stevenson; Vice-President, D. McDonald; Secretary, M. Barbazon; Treasurer, J. Kabbes.*



President, E. Figueroa; Secretary, M. Costa; Treasurer, A. Effinger.  
 President, M. A. Lingner; Vice-President, N. Volm; Secretary, G. Dowd; Treasurer,  
 V. Knese; Manager, A. Callahan.  
 President, B. Schweitzer; Secretary-Treasurer, M. Quigg.

## Saludos Amigos

Guided by Adventurous Spanish  
 señoritas . . . Posters . . . Enter-  
 tainment . . . Latin American  
 speakers . . . colorful fans . . .  
 Mantillas . . . Spanish music . . .  
 Brings exciting South America  
 to Webster . . . Pan-American  
 Day celebration furthers spirit  
 of international cooperation of  
 Americas.

## Shares and Wares

Looking for something? Place:  
 Co-op store . . . Salesman: stock-  
 holders . . . Wares: kleenex . . .  
 soap . . . combs . . . Christmas  
 toys . . . talk on Cooperatives  
 by Mary Dooling . . . good busi-  
 ness . . . profit . . . returns to  
 shareholders at end of year.

## Interest in Antiquity

The world of oblivion . . . from  
 Cicero to Xenophon . . . read-  
 ings on Greece and Rome . . .  
 literature . . . philosophy . . .  
 from ancient manuscripts to  
 printed matter . . . social tea  
 with Maryville . . . Fontbonne  
 . . . St. Louis Classical Clubs.

## *World Situation at Webster*

Meetings presided over by Doctor Donovan . . . Papers on countries of Europe . . . discussion on leaders . . . Student Representatives from various sections all over globe . . . Georgette Mercier speaks on Canada . . . Enid Davila on Puerto Rico . . . Economic problems discussed . . . Situation of the country today . . . ever-ready problem . . . War . . . Reconstruction . . . Neutralization . . . Pope's Peace Plan . . . Democracy at work . . . Furtherment of good will policy . . . Purpose of the club . . . To acquaint students with economical and political situations existing in other countries . . . to promote better understanding of human relationships . . . bring about spirit of brotherhood among the races . . . climax of year . . . Panel discussion . . . St. Louis U. and parents invited . . . International cooperation was main topic.



*New members arriving.  
Serious problems.  
Inter-American greetings.  
Looking ahead.*



## *"The Play's the Thing"*

### OFFICERS

- SUSAN MONTI - - - - - *President*
- RENEE PEREZ - - - - - *Vice-President*
- BETTIE ORR - - - - - *Treasurer*
- THOMASINE HUNT - - - - - *Secretary*

Informal meetings in Pink Room . . .  
 Tracing Greek and Roman Drama . . .  
 Reviewing Current Plays in town  
 . . . Original skits written by our own  
 Betty Schmid . . . \$150 to Red Cross  
 Relief from "Letters to Lucerne" . . .  
 Freshmen one act plays . . . Nativity  
 scene getting everyone in Christmas  
 spirit . . . All members helping Sue  
 with her Senior Recital Production of  
 "Midsummer Night's Dream" . . .  
 Timely direction of Mr. McClain and  
 Mrs. Sankey . . . rehearsals far into  
 night . . . costume fittings . . . Mrs.  
 Frey explaining the art of costuming  
 . . . fun . . . despair . . . success . . .  
 new furniture lounge . . . Climax of  
 year . . . Speech Week . . . armbands  
 . . . posters . . . before and after scenes  
 in Red Room . . . Awards for Best  
 Speech given to students . . . Every-  
 one feeling as if she knows theatre  
 more because of Dramatic Club.

*Watch the call board.  
 Relaxing between rehearsals.  
 Scenery, lights and lines.  
 Finishing touches.*

# Student Government

## OFFICERS

ROSIE MAE SPALDING - - - - - *President*  
 MARGARET KNECHT - - - - - *Vice-President*  
 SUSAN MONTI - - - - - *Secretary*  
 MARGARET ROBINSON - - - - - *Treasurer*

## REPRESENTATIVES

Virginia Daly	Marline Ruemping
Mary Eileen Mansfield	Judy Biller
Mary Jane Greenslade	Marie Vlatkovitch
Iris Garvey	Mary Fitzgerald
Ann Young	Darothy Sympson

Student government in action . . . Association meetings weekly . . . all important subjects discussed, voted on . . . plans suggested by Board, decided by Association . . . opinions expressed freely by Association members . . . activities sponsored by the Association: Freshman Week . . . that glamorous Fall Dance . . . Little Sister-Big Sister Parties . . . doing our patriotic duty with a tremendously successful bond drive . . . weekend in March for the whole school . . . and Open House . . . the Association behind "A Midsummer Night's Dream" . . . May Day and the formal Spring Dance . . . changes the war made in our usual activities.



*Juke joke.  
 Hilarity.  
 Iris, did you know Susie left the school.  
 Class representatives.*